



Guide to the LRT Municipal Consent Process

Minnesota law (Minn Stat. 473.3994) requires a process of local review and approval for the Southwest Light Rail Transit (METRO Green Line Extension) project. This is known as the municipal consent process. During municipal consent, the public can also review the plans and provide comments directly to local governments or to the Metropolitan Council.

The Metropolitan Council, the Hennepin County Regional Railroad Authority (HCRRA), Hennepin County and the cities along the Southwest LRT route (Minneapolis, St. Louis Park, Hopkins, Minnetonka and Eden Prairie) are required to hold public hearings and receive comments on preliminary design plans.

Hennepin County and the city governments are required to review and approve or disapprove the plans.

Preliminary design plans show the general dimensions and location of the light rail alignment, including approximate station locations.

The plans are available in printed form or as electronic documents on the Southwest LRT Project website. (See page 4 for a list of locations.)

The Metropolitan Council and the Hennepin County Regional Railroad Authority will hold a joint public hearing. In May and June 2014, the cities will hold separate public hearings before their city councils vote on the plans.

The hearings will be preceded by open houses, when members of the Southwest LRT Project staff will give a brief overview of the Southwest LRT Project and answer questions.

The same preliminary design plan overview will be presented by project staff before each hearing.

These meetings will deal only with the content of the preliminary design plans. Future decisions regarding issues such as station design and streetscape will be the focus of later meetings.

Public hearings on preliminary design plan approval

The Metropolitan Council and Hennepin County Regional Railroad Authority will hold a joint public hearing. Hearing details will be posted at <http://www.metrocouncil.org/swlrt/municipal>.

May & June 2014

Cities will hold separate public hearings. For more information, contact your city government or visit www.metrocouncil.org/swlrt/municipal.



See following pages to find out:

- ✓ How to read the municipal consent plans
- ✓ Where to obtain copies of the plans
- ✓ How to submit written comments

How to Read Preliminary Design Plans

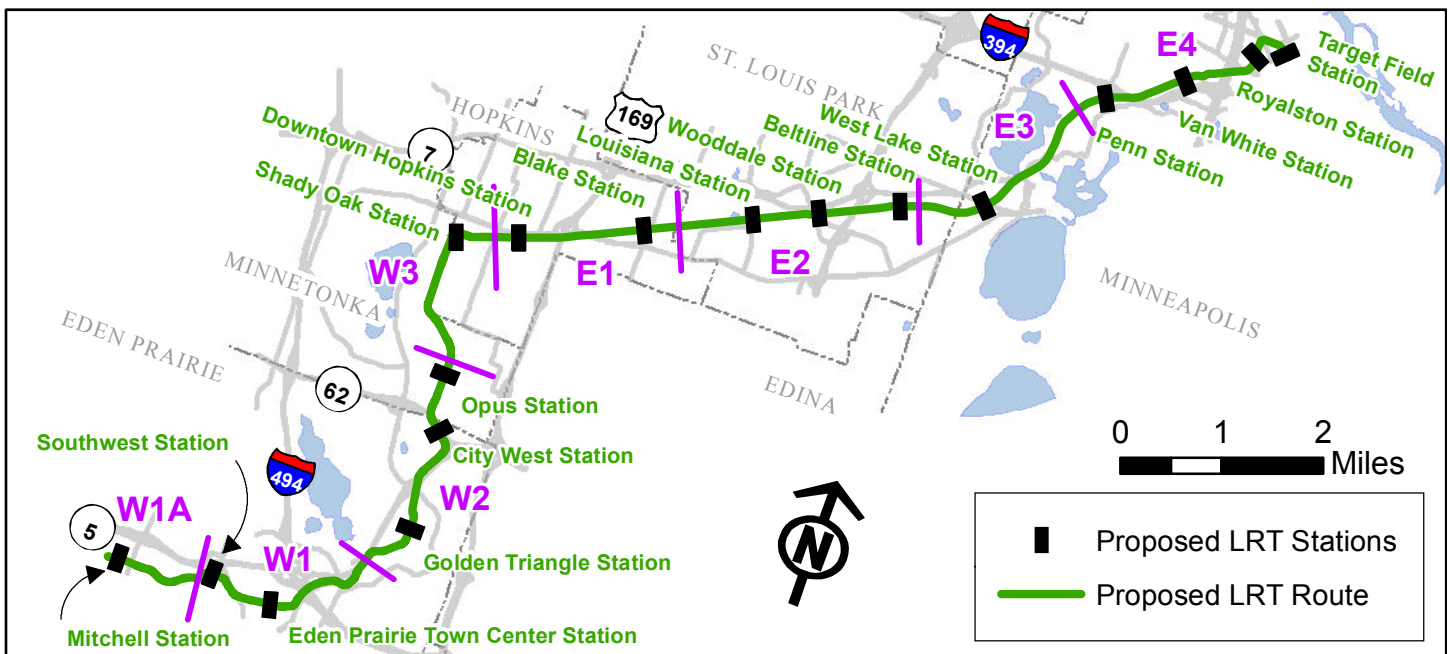
The preliminary design plans divide the proposed Southwest LRT route into eight **segments**, each covering a different geographic area. There are four West segments and four East segments.

The first few pages of each plan include a guide that shows the entire corridor, the segment's position on the corridor and a key to the symbols and abbreviations used in the plan.

The plans for each segment are separated into **disciplines**, including: tracks, station locations, roads and turn lanes, sidewalks, curbs and gutters, crosswalks, traffic signals, parking facilities, bus stops and trails. Existing conditions are also shown, to give readers a before-and-after comparison.

Within each discipline, sequences of detailed drawings show the placement and design of light rail facilities. Each drawing in a sequence is numbered, starting with 1 at the western end of the sequence.

Step 1: Find the **SEGMENT** that interests you. A detailed map is provided at the beginning of each plan.



	City	Area Description	Stations in Segment	Code
WEST SEGMENTS	Eden Prairie	East of Wallace Road to Southwest Station	Mitchell	W1A
	Eden Prairie	Southwest Station to North of Flying Cloud Dr. & Valley View Rd.	Southwest, Eden Prairie Town Center	W1
	Eden Prairie, Minnetonka	North of Flying Cloud Dr. & Valley View Rd. to Bren Road West	Golden Triangle, City West, Opus	W2
	Minnetonka, Hopkins	North of Bren Road West to 11th Avenue South	Shady Oak	W3
EAST SEGMENTS	Hopkins, St. Louis Park	11th Avenue South to West of Powell Road	Downtown Hopkins, Blake	E1
	St. Louis Park	Powell Road & Minnehaha Creek to East of Beltline Blvd.	Louisiana, Wooddale, Beltline	E2
	St. Louis Park, Minneapolis	East of Beltline Blvd. to South of Cedar Lake Junction	West Lake	E3
	Minneapolis	South of Cedar Lake Junction to 6th Avenue North	Penn, Van White, Royalston, Target Field	E4

How to Read Preliminary Design Plans (continued)

Step 2: Determine which **DISCIPLINE** includes the information you want, and **TYPE** of plan that you will review.

Components	Plan Type	Discipline Code	Type Code
Legend & Abbreviations	N/A	SUR	LGD
Segment key map	Roadway Plan: Overhead View	GEN	KEY
Sheet layout index	Roadway Plan: Overhead View	GEN	IDX
Tracks Stations	Track Plan & Profile: Overhead View	TRK	PPFL
Roads and turn lanes Sidewalks Curbs and gutters Bus stops Crosswalks On-street parking Traffic signals	Roadway Plan: Overhead View	CIV	PPFL
Trails	Roadway Plan: Overhead View	TRL	PPFL
Sidewalk width Trail width Track location Stations	Typical Section: Cross-cut View	TRK	TYP
Existing roadway conditions	Existing Conditions Plan: Overhead View	SUR	PLN

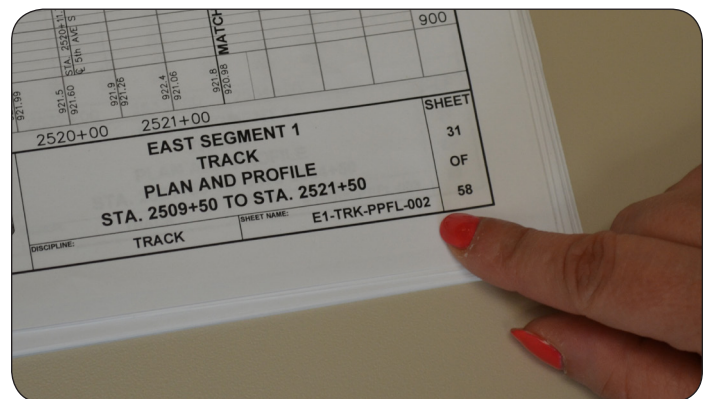
Step 3: Use the **INDEX** at the beginning of each Discipline to find the Sheet Number of the page covering the location you want to review.

Step 4: Find the code for the **PAGE** that contains the information you want using the Discipline Code and Type Code (Step 2) and the Sequence Sheet Number (Step 3).

For example, to see information about the location of LRT track just east of Downtown Hopkins Station, you would want to find the following page:

Segment (Step 1)	Discipline (Step 2)	Type (Step 2)	Sheet No. (Step 3)
E1	TRK	PPFL	002

= E1-TRK-PPFL-002



Where to Obtain Copies of the Plans

All preliminary design plans can be downloaded from the Metropolitan Council's Southwest LRT Project website:

<http://www.metrocouncil.org/swlrt/municipal>

Printed copies of the full preliminary design plans are available for public review at the following locations:

Minneapolis Central Library 300 Nicollet Mall,
Second Floor

MnDOT Transportation Library 395 John Ireland
Blvd., St. Paul

Southwest LRT Project Office 6465 Wayzata Blvd.,
Suite 500, St. Louis Park

Metropolitan Council Library 390 North Robert
Street, St. Paul

Printed copies of plan sets for individual cities along the proposed alignment are available for public review at the following locations:

Eden Prairie (plan sets W1, W2):

Eden Prairie City Hall 8080 Mitchell Road

Eden Prairie Library 565 Prairie Center Drive

Minnetonka (plan sets W2, W3):

Minnetonka City Hall 14600 Minnetonka Blvd.

Minnetonka Library 17524 Excelsior Blvd.

Hopkins (plan sets W3, E1):

Hopkins City Hall 1010 First Street South

Hopkins Library 22 11th Avenue North

St. Louis Park (plan sets E1, E2, E3):

St. Louis Park City Hall 5005 Minnetonka Blvd.

St. Louis Park Library 3240 Library Lane

Minneapolis (plan sets E3, E4):

Minneapolis City Engineer's Office City Hall Room
203, 350 South Fifth Street

Franklin Library 1314 East Franklin Avenue

Linden Hills Library 2900 West 43rd Street

Sumner Library 611 Van White Memorial Blvd.

Walker Library (after April 26) 2880 Hennepin Ave.

How to Submit Written Comments

Submit written comments focused on the technical details of the preliminary design plans to both your city and county contacts listed below:

Hennepin County:

Nelrae Succio
Administrative Engineer
200 Grain Exchange
400 S Fourth Street
Minneapolis, MN 55415
nelrae.succio@hennepin.us

City of Eden Prairie:

Robert Ellis
City of Eden Prairie Public Works Director
8080 Mitchell Road
Eden Prairie, MN 55344
rellis@edenprairie.org

City of Minnetonka:

Elise Durbin
Minnetonka Community Development Supervisor
14600 Minnetonka Blvd.
Minnetonka, MN 55345
edurbin@eminnetonka.com

City of Hopkins:

Kersten Elverum
City of Hopkins Director of Planning & Development
1010 First St. South
Hopkins, MN 55343
swlrt@hopkinsmn.com

City of St. Louis Park:

Meg McMonigal
5005 Minnetonka Blvd.
St. Louis Park, MN 55416
mmcmonigal@stlouispark.org

City of Minneapolis:

Paul Miller
Project Manager, City of Minneapolis Public Works
309 Second Ave. S #300
Minneapolis, MN 55401
paul.miller@minneapolismn.gov

Metropolitan Council:

Southwest LRT Project Office
6465 Wayzata Blvd., Suite 500
St. Louis Park, MN 55426
ATTN: Daren Nyquist
swlrt@metrotransit.org