

WINTER 2013.14

YOUR GUIDE TO LOCAL ARTS & CULTURE
IN THE METHOW VALLEY. ART GROWS HERE

FEATURED ARTIST: GINGER REDDINGTON

IN THIS ISSUE: ARTS EDUCATION UPDATE • CLASSES
• EVENTS • EXHIBITS & MORE



balance
associates
architects

natural + modern

winthrop
509.996.8148
seattle
206.322.7737

balanceassociates.com



METHOW ARTS Methow Arts Alliance
Post Office Box 723, 109 2nd Ave.
Twisp, Washington 98856

Non-Profit
U.S. Postage
PAID
Wenatchee, WA
Permit No. 241

30 YEARS OF **art**

WINTER 2013-2014



Amanda Jackson Mott
Executive Director
Methow Arts Alliance

MY TOP TEN REASONS TO BUY LOCAL ART THIS SEASON

- 1. To preserve local character and prosperity:** In an increasingly homogenized world, communities that preserve their one-of-a-kind products have an economic advantage.
- 2. Invest in our community:** Your purchase supports people who live in this community, are less likely to leave, and are more invested in the community's future.
- 3. Get better service:** Artists are selling the product of their love and labor. No one knows their product better.
- 4. Keep dollars in the Local Economy.**
- 5. Create good jobs:** Supporting local means creating more jobs locally.
- 6. Entrepreneurship:** Locally fuel America's economic innovation and prosperity.
- 7. Keep our community awesome:** The unique character of our community is defined by our activities.
- 8. Environmental sustainability:** Local products sustain vibrant, walkable down towns - reducing sprawl, habitat loss, and air and water pollution.
- 9. Locally made art is unique, morale boosting and inspiring.**
- 10. BECAUSE ARTWORK ROCKS!** It outlasts trends and never becomes obsolete.

2014 ARTS PARTNERS

ARTS PARTNERS make this project a reality. Each partner is dedicated to collaborative promotion of the Arts & Culture in our region. To learn more about becoming an Arts Partner, contact info@MethowArtsAlliance.org

CONFLUENCE
gallery & art center
509.997.2787
www.confluencegallery.com

Merc Playhouse
Twisp, WA 98856
509.997.7529
www.mercplayhouse.org

Cascadia
THE METHOW MUSIC ASSOCIATION
Twisp, WA 98856
509.997.4601
www.cascadiamusic.org

Winthrop GALLERY
509.996.3925
www.winthropgallery.com

METHOW VALLEY CHAMBER MUSIC FESTIVAL
KEVIN KRENTZ, ARTISTIC DIRECTOR
509.996.6000
www.methowmusicfestival.org

Twisp
Washington
the heart of the methow valley
Twisp, WA 98856
509.997.2926
www.twispinfo.com

WINTHROP RHYTHM & BLUES FEST
Winthrop Music Association
509.997.3837
www.winthropbluesfestival.com

TWISP WORKS
TwispWorks
509.997.3300
www.twispworks.org



Winthrop Chamber of Commerce
1-888-463-8469, (509) 996-2125
info@winthropwashington.com



Twisp, WA 98856
509.997.2044 or 509.449.1789
doorno3twisp@gmail.com

SUPPORTERS

NATIONAL ENDOWMENT FOR THE ARTS

ARTS WA
arts.wa.gov

Community Foundation of NCW
ICICLE FUND
artist|TRUST
SUPPORTING ART AT ITS SOURCE



METHOW ARTS

Methow Arts Alliance
109 Second Avenue, PO Box 723
Twisp, WA 98856
509.997.4004
www.MethowValleyArts.org

METHOW ARTS ALLIANCE is a non profit organization founded in 1983 that enriches the lives of our community through a variety of diverse art programs.

Board of Directors
Alison Philbin, President
Don Ashford, Vice President
J. Joseph Weaver, Secretary
Ann Diamond
T. Lewis
Carol W. Mitchell
Linda Robertson

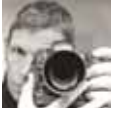
Staff
Amanda Jackson Mott, Executive Director
Ashley Lodato, Arts Education Director
Erik Brooks, Communications

ARTI MAGAZINE connects audiences with the work of our many resident and visiting artists and the organizations that provide a breadth of arts programming. It is a celebration of the vision, genius and creativity that abound in the Methow Valley and beyond. To receive this publication in the mail, please become a member of one or more of our collaborating Arts Partner organizations. Thank you for supporting a rich and varied arts community.

Published and designed by Methow Arts Alliance
info@methowartsalliance.org
www.methowarts.org
509.997.4004

CONTRIBUTORS

FEATURED PHOTOGRAPHY:
E.A. Weymuller



FEATURE ARTICLE:
Marcy Stamper



PRODUCTION

Design/layout/editing: Methow Arts Alliance
Printing: Wenatchee World

The **ART Magazine** is published quarterly. Annual circulation is 12,000. All contents are copyrighted and may not be used without the express consent of the publisher.

Visit our **WEBSITE AND ARTS CALENDAR**
www.MethowArts.org

JOIN US!

Become a part of the vibrant arts community in the Methow Valley.

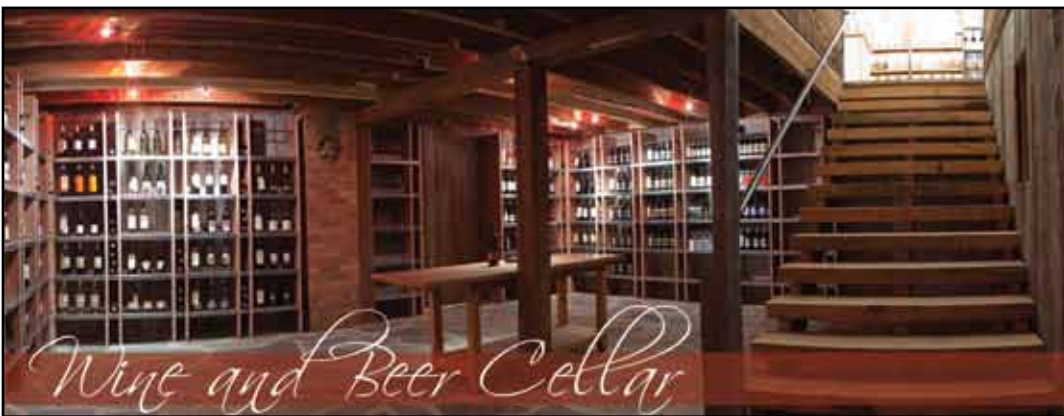
METHOW ARTS MEMBERSHIP - 2014

YES, I will support the ARTS!

\$_____ Please mail your check to:

PO BOX 723, TWISP, WA 98856

Donations are tax deductible! Methow Arts is 501(c)3 not-for profit organization. **THANK YOU FOR YOUR SUPPORT.**



www.gloverstreetmarket.com

124 N Glover St, Twisp

Juice Bar
Breakfast & Lunch
Natural Foods
Local Produce
Bulk Foods
Bulk Herbs & Spices



pouring \$2 glasses of wine on Saturdays 2-6 pm

More than pretty houses...

Stopwater Construction, Ltd.

Andy McConkey
509.429.9456

www.stopwaterconstruction.com
[stopwcl923mu]

© 2012 Weymueller Photography

peligro studio



rejuvenate your old gems into new custom jewelry

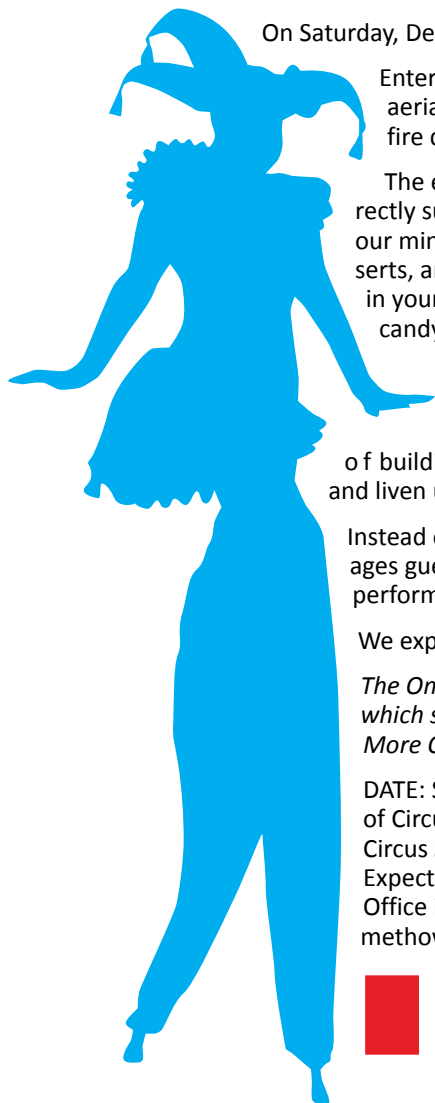
downtown twisp - 509.699.0238

www.peligrostudio.com



[METHOW ARTS ALLIANCE]

CELEBRATE THE SEASON AND SUPPORT ARTS EDUCATION AT THE WINTER WONDER CIRCUS GALA!



On Saturday, December 7th be CERTAIN to attend this unique CIRCUS event!

Enter a winter wonderland circus. Savor a glass of champagne poured from our aerialist champagne girls. Experience a secret world of aerial arts, stilt walkers, fire dancers, mimes, unicyclists, balance arts, and Jack Frost the juggler.

The event is inspired by 30 Years of Art for Methow Arts. Your participation directly supports Art Education Programs and ensures that they STAY in our schools, our minds and our community. Enjoy decadent courses of appetizers, delish desserts, and an endless variety of circus-themed cocktails. And dress the part! Arrive in your best evening Circus wear or get your face painted here. Enjoy cotton candy, a photo booth and many more surprises.

Animate Objects Physical Theatre, based out of Miami and Seattle, transform the ordinary into the extraordinary. Traveling the world with their event-specific performances, they wow audiences as they dance on sides of buildings, suspend from theater rafters, captivate crowds in outdoor festivals and liven up parties with aerial arts and dancers in snow characters.

Instead of traditional seating, the night offers select tables and chairs but encourages guests to mingle, engage in face painting, a photo booth, and interactive performance on all sides of you throughout the evening.

We expect to sell out. Purchase your tickets in advance.

The Omak PAC will offer a performance on Friday, December 6th, A Circus Cabaret, which showcases a variety of acts differing from the Saturday Gala in Winthrop. More Omak information: www.omakpac.org

DATE: SAT, DEC 7, 7pm. LOCATION: Winthrop Barn. TICKETS: \$45. Includes a night of Circus Fare (includes appetizers and delish desserts) served by our roaming Circus Servers, a welcome drink to start the evening and LOTS of performance! Expected to sell out. Purchase in advance. Twisp Daily Business, Methow Arts Office in Twisp and BrownPaperTickets.com, Riverside Printing. CONTACT: info@methowartsalliance.org, 509.997.4004, MethowArts.org.



[METHOW VALLEY SCHOOL DISTRICT]

DECK THE HALLS!



Sunflower, by Mavrik MacArthur

Art is all around us, and we want you to know about it. In this issue, from the halls of Methow Valley Elementary school, first grade sunflowers!

From Amanda Armbrust, their teacher:

In first grade, we read a biography of Vincent Van Gogh and viewed samples of his artwork. We learned that, possibly more than any other artist, Van Gogh's feelings came out in his paintings.

Using Van Gogh's "Sunflowers" as a guide, we used oil pastels to create our own still life. We used bright colors just as he did.

There are 11 sunflowers scattered through this issue of ART and we hope that you enjoy them as much as we do. Thank you first graders, for making awesome Art and for adding a splash of color to the pages of our magazine.

Welcome to the Methow Valley.

Explore beautiful wide open spaces, fresh mountain air, wildlife and meet amazing people. Contact the Central Reservations Gang, your local lodging specialists, to help you find your perfect getaway location. Choose from inns, bed & breakfasts, cabins, historic homes, farm houses and condos. Our website is user friendly and all lodging calendars are up to date 24/7 for secure online bookings. Now offering extended stay rentals, 30 days or longer, located in downtown Winthrop, your home away from home.



METHOW STYLE

CentralReservations.net or call 1-800-422-3048.

WINTER CALENDAR

EVENTS/CLASSES/EXHIBITS

Classes in **ORANGE**, Exhibits in **BLUE**.

More information online at www.methowarts.org

DECEMBER

ARTscapes Copper Studio

Weekly hours: Thurs, Fri 4-6pm, Sat, 1-3pm
Copper weathervanes, jewelry, sculpture by Jessica Dietz daCosta. 213 Glover St, Twisp. 509.846.5119. www.MethowArts.org

Winthrop Gallery: Holiday Gift Show

Thru Jan 6, 2014
Holiday art and gifts. See article.
Winthrop Gallery, 237 Riverside Ave, Winthrop. 509.996.3925, www.winthropgallery.com

Visions of Verse

Thru Jan 11
Artists respond to selected writing through visual art and media. Confluence Gallery. 509.997.2787, www.confluencegallery.com

The Merc Playhouse Presents: Louisa May Alcott's Little Women

Dec 2-22, Thu, Fri, Sat, 7pm; Sun, 2pm
Directed by Ki Gottberg. \$15/Adults, \$5/Youth 18 & under. The Merc Playhouse, Twisp. 509.997.PLAY or www.mercplayhouse.org

ARTScapes Success Party!

Wed, Dec 4, 4:30-6pm
Artist Bruce Townsend Cook rocked the art and the building SOLD! 7 south Main Street, Omak, WA (the former Main Street Bar and Grill). Methow Arts Alliance, 509.997.4004, www.methowarts.org

Animate Objects Circus Cabaret

Fri, Dec 6, 7pm
Thrilling circus arts, aerialist, balance arts and more. Omak PAC. 509.846.3714, www.omakpac.org

31st Annual Twisp Holiday Bazaar

Sat, Dec 7, 9am-3pm
MV Community Center, Twisp, WA. 509.997.2926, www.methowvalleycommunitycenter.org

Holiday Crafts

Sat, Dec 7, 1-3pm
Creative art-making booths featuring Spice and herb mixes, wire wrapped earrings, and creative labels for spice/herb mixes & holiday cards. \$15/one booth, \$25/two, and \$35/all three. 509.997.2787, www.confluencegallery.com

A Winter Wonder-Circus Gala

Sat, Dec 7
Enticing Aerialist Champagne Girls, Unicyclists, Stilt walkers, Mimes, an endless array of delicious food and wintry cocktails. Supports Art Education. See article. Winthrop Barn. www.methowarts.org, 509.997.4004

Cascadia Holiday Concert

Tues, Dec 10 & Wed Dec 11, 7pm
MVCommunity Center, Twisp, WA, 509.997.2926

Felted Soap Making with Jae Cremin

Dec 12, 6-8pm
\$40 includes materials. La Fabrica studio on the Twisp-Works campus. Register with Jae at: jaecremin@gmail.com or 509.341.4149

Kid's Art Party: Holiday Card Making

Dec 13, 10-11am
With Deirdre Cassidy. \$35. Confluence Gallery. 509.997.2787, www.confluencegallery.com

Member's Show: Artists of the Okanogan

Thru Dec 13, Mon-Fri, 9:30am-6pm, Sat, 10am-5pm
The Main Steet Gallery (a part of Main Street Market) 1 North Main Omak, WA 98841, 509.826.1445, main-streetmarketomak@gmail.com

Confluence Gallery Black Tie: Vintage Ski Lodge Party

Sat, Dec 14
A Holiday Party with an Elegant Flair!
Hors d'ourves, complimentary glass of champagne, no host and live music. \$20/each, \$35/two. 509.997.2787
www.confluencegallery.com

Winthrop Gallery: Christmas Carol Sing-a-longs

with Lauralee Northcott
Sundays Dec 15 and 22, 2-3pm
Carol books provided. Bring the kids!
At Winthrop Gallery, 237 Riverside Ave, 509.996.3925, www.winthropgallery.com

Methow Valley Community School

Festival of Songs
Dec 15, 5-6:30pm
Songs, festivities, and a desert auction!
RSVP recommended. Methow Valley Community School. 31 West Chewuch Road, Winthrop, 509.996.4447

Poetry Out Loud

Dec 18, 7-8:30pm
The Merc Playhouse, Twisp. 509.997.PLAY or www.mercplayhouse.org

Intro to Silversmithing

Sat through Jan 11, 12-3pm
This 8-week class covers fabricating sterling silver sheet and wire, pendant making, chain making, soldering, handsaw work and stone setting. Students complete two take-home projects. \$250 plus the market price of silver. Glitter & Grit Silversmith, TwispWorks, 502 S. Glover St, Twisp. 509.341.4149, sarahlightner@rocketmail.com

Christmas Tree Sales

Through Dec 24 or until sold out
Hank's Market parking lot. Proceeds benefit the MV Community Center, Twisp, WA, 509.997.2926

Winterfest

Dec 28, 4-dark
Join us around the fire as we celebrate the magic of the darkest days! Winterfest is back for the second year of music, art, food and drink. \$5-10. TwispWorks, 502 S. Glover St, Twisp, 509.997.3300

JANUARY

ARTScapes Copper Studio

Weekly hours: Thurs, Fri 4-6pm, Sat, 1-3pm
Copper weathervanes, jewelry, sculpture by Jessica Dietz daCosta. Artist Resources Center, 213 Glover St, Twisp. 509.846.5119. www.MethowArts.org

Visions of Verse

Thru Jan 11
Artists respond to selected writing through visual art and media. Confluence Gallery. 509.997.2787, www.confluencegallery.com

Michael Brady at the Merc

Jan 1
The Merc Playhouse, Twisp. 509.997.PLAY or www.mercplayhouse.org

Teachers and Their Students

Jan 11-Mar 1
Reception : Jan 11, 4-8pm
Dan Brown curates an exhibit of artwork by teachers and their students. Confluence Gallery. 509.997.2787, www.confluencegallery.com

Winter Jazz Series

Jan 14, Feb 22 & Mar 28, 7pm
Directed by pianist and composer Lynette Westendorf, in collaboration with Terry Hunt. Tickets Adults/\$15 Adults, Youth/\$5, 18 & under. The Merc Playhouse, Twisp. 509.996.3418.

Jessica Spring "Volume 5: Po-St" Prints

Jan 18-Mar 20
Reception: Sat, Jan 18, 5-7pm
Door No. 3, Methow Valley Community Center, Twisp 98856, doorno3twisp@gmail.com, 509.997.2044

Daredevil Letterpress Valentine's Workshop

Jan 19, 10am-4pm
Jessica Spring of Springtide Press teaches a hands-on introduction to letterpress printing. Focused on the creation of Valentine's prints/cards using Door No. 3's presses. Register by mail: Door No. 3, PO Box 817, Twisp 98856, doorno3twisp@gmail.com or 509.997.2044

Copper Forming Class

Jan 23-25, 3-6pm
Practice foldforming techniques on copper sheet to create a finished piece of your choice. (Jewelry, magnets etc.) \$75/3 days. Class size is limited, register: 509.846.5119. Jessica Dietz daCosta ARTscapes Studio, 213 Glover Street, Twisp WA

Kid's Art Party: Winter Wonderland Scenes

Jan 24, 1:30pm
With Margaret Kingston. \$35. Confluence Gallery. 509.997.2787, www.confluencegallery.com

Dance Family Dance with DJ Noah Ashford

Jan 25, 7-10pm
MV Community Center, Twisp, WA, 509.997.2926, www.methowvalleycommunitycenter.org

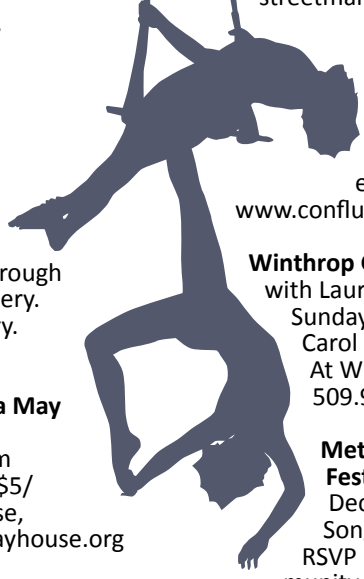
FEBRUARY

ARTScapes Copper Studio

Weekly hours: Thurs, Fri 4-6pm, Sat, 1-3pm
Copper weathervanes, jewelry, sculpture by Jessica Dietz daCosta. 213 Glover St, Twisp. 509.846.5119. www.MethowArts.org

Teachers and Their Students

Through Mar 1, Reception : Jan 11, 4-8pm
Dan Brown curates an exhibit of artwork by teachers and their students. Confluence Gallery. 509.997.2787, www.confluencegallery.com



Copper Forming with Jessica Dietz daCosta



996-3816

Winthrop, WA.

Turning Your Ideas Into Products

<p>Standard and oversized laminating</p> <p>Blueprints and map printing</p> <p>Oversized posters and banners</p>	<p>Color posters and brochures</p> <p>Business cards</p> <p>High speed, bulk folding machine</p>
--	--

THE FLOYD COMPANY

TAXES
TECHNOLOGY
INVESTMENTS

(509) 997.3262 | www.TFCHQ.com

Securities offered through KMS Financial Services, Inc., a registered broker-dealer, Member FINRA/SIPC



Bruce Morrison

www.brucemorrison.com

Carving

SIGNS • DOORS • MANTELS • ORNAMENTS

(509) 429-7726 - PO Box 1043 Twisp WA 98856

School could be fun and easy...
(for everyone, even the mom...)
Just Sayin' :)

Mindy Miller
Academic Coach &
Educator

509-429-9600
mindymillersmail@gmail.com

Jessica Spring "Volume 5: Po-St" Prints
Through Mar 20
Door No3. Room three MV Community Center, Twisp
doorno3twisp@gmail.com, 509.997.2044

art **Nomadic Massive**
Sat, Feb 1, 7pm
Global Hip-Hop from Montreal. See article.
Winthrop Barn. www.methowarts.org, 509.997.4004

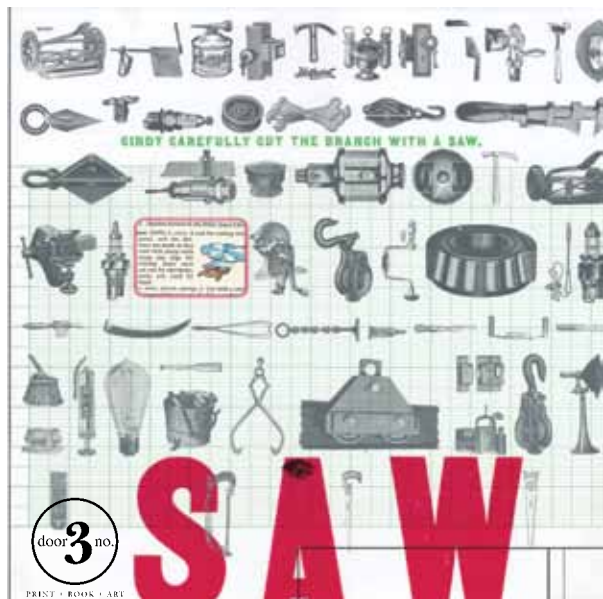
The Methow Dance Collective
Feb 6-8, 7-9pm
The Merc Playhouse, Twisp. 509.997.PLAY,
www.mercplayhouse.org

Methow Minds
Feb 8
MV Community Center. Twisp, WA. 509.997.2926

Jessica Spring "Volume 5: Po-St" Prints
Thru - Mar 20
Door No 3. Room 3 Methow Valley Community Center.
See article. doorno3twisp@gmail.com, 509.997.2044

'Love is the Answer' Valentine's Making Clinic
Feb 12, 3-6pm
Come help make handmade Valentine's for all nominat-
ed valley residents. Free. See article. Door No. 3, room
three MV Community Center, Twisp, doorno3twisp@
gmail.com, 509.997.2044

Winthrop Gallery: Dog & Cat Photo Contest
Feb 12-24
Reception: Sun, Feb 16, 11am-3pm
Amateur photo contest for animal lovers. See article.
At Winthrop Gallery, 237 Riverside Ave, 509.996.3925,
www.winthropgallery.com



Jessica Spring "Volume 5: Po-St" Prints. Through March.

Kid's Art Party: Paper Mache Animals
Feb 14, 10am
With Deirdre Cassidy. \$35. Confluence Gallery.
509.997.2787, www.confluencegallery.com

Winthrop Snowshoe Softball Tournament
Feb 15-16
Up to eight out-of-town and local coed snowshoe soft-
ball teams converge.
Winthrop Ball Field. www.winthropwashington.com

Methow Valley Chamber Music
Feb 15, 7-9pm
The Merc Playhouse, Twisp. 509.997.PLAY or
www.mercplayhouse.org

[WINTHROP GALLERY]

DOG & CAT PHOTO CONTEST AND EXHIBIT

Get out your cameras and plan to enter a picture of your favorite pooch or kitty in the 2014 Winthrop Gallery Dog and Cat Photo Contest. This is a contest for amateur and professional photographers alike. To enter, submit one or more photos, framed and ready to hang, to the Winthrop Gallery by Monday February 10. There is a \$5 entry fee per photo. Photographers 14 and under may enter one photo for free. All entry fees collected are donated to Okanogan County low-cost spay and neuter organizations. Prizes will be awarded in several categories. All entries will be on display at the Winthrop Gallery from February 12 through 24. A reception will be held at the gallery on Sunday February 16 from 11am to 3pm. Refreshments will be served.

DATES: Deadline for entries Mon, Feb 10; Exhibit, Feb 12-24; Reception, Feb 16, 11-3pm. **LOCATION:** The Winthrop Gallery, 237 Riverside, downtown Winthrop. **HOURS:** Winter hours for the gallery are 10am to 5pm, Wednesday through Monday. **CONTACT:** 509.996.3925 or www.winthropgallery.com.



Frosty by Teri Pieper

Winter Jazz Series
Lynette Westendorf Annual Birthday Event
Feb 22 & Mar 28, 7pm
Directed by pianist and composer Lynette Westendorf,
in collaboration with Terry Hunt. Tickets Adults/\$15
Adults, Youth/\$5, 18 & under. The Merc Playhouse,
Twisp. 509.996.3418.

Imaginary Invalid
Feb 23
The Merc Playhouse, Twisp. 509.997.PLAY,
www.mercplayhouse.org

EARLY MARCH

Cascadia's Keyboard Confections
Sat, Mar 1
Annual scholarship fundraiser, piano concert and gour-
met dessert event See article. MV Community Center,
Twisp, 509. 996.3418

Winthrop Balloon Festival
Mar 7-9
Hot air balloons in Winthrop.
www.winthropwashington.com

Women: At the Confluence Gallery & Art Center
Mar 8-Apr 19
Opening: Mar 8, 4-8pm
Confluence Gallery. 509.997.2787
www.confluencegallery.com

art **Utah Ballroom Dance & Dancing with Your Stars - Methow Valley**
Sat, Mar 8, 7pm
Ignite your weekend with world-class ballroom dance!
A Dancing with your Stars contest opens the night.
See article. Winthrop Barn. www.methowarts.org,
509.997.4004, info@methowartsalliance.org.

Jessica Spring "Volume 5: Po-St" Prints
Through Mar 20
Door No3. Room three MV Community Center, Twisp
doorno3twisp@gmail.com, 509.997.2044

Over the River and Through the Woods
A Coming-of-Age Comedy
Mar 7-23, Thu, Fri, Sat, 7pm; Sun, 2pm
\$15/Adults, \$5/Youth 18 & under. The Merc Playhouse,
Twisp. 509.997.PLAY or www.mercplayhouse.org

Winter Jazz Series
Sat Mar 28, 7pm
Directed by pianist and composer Lynette Westendorf,
in collaboration with Terry Hunt. \$15/Adults, \$5/Youth
18 & under. The Merc Playhouse, Twisp. 509.996.3418



Round up your sweet treats for Cascadia's annual Keyboard Confections!

WORLD PRINTING

Design • Writing • Printing • Distribution

The winner of the Pacific Northwest News Association Print Quality Award is proud to print Methow Arts' magazine!

Call us at (509) 664-7127 to print your publication!

Brown's Farm

Complete Private Cabins

Jeff & Alicia Brown
887 Wolf Creek Road, Winthrop WA 98862
(509) 996-2571 www.methownet.com/brownsfarm

Swanson Woodcraft

Cabinetry & furniture designed for your home

Rick Swanson 509.996.2297

rick@swansonwoodcraft.com • www.swansonwoodcraft.com

The Methow Valley Inn

WINTER SUPPER CLUB

Wine by the fire, 3-course Sumptuous Dinner, Coffee, Dessert and entertainment.

Mondays:

DEC 2	FEB 10
JAN 13	FEB 24
JAN 27	MAR 3

Methow Valley Inn

509.997.2253 - www.methowvalleyinn.com

[METHOW ARTS]

ARTS EDUCATION REPORT

OKANOGAN FOURTH GRADERS INTEGRATE VISUAL ARTS, BIOLOGY, AND ECOLOGY

Fourth graders at Virginia Grainger Elementary School in Okanogan integrated biology and ecology with the traditional art of block printing in a residency that took them from the banks of Salmon Creek to the classroom.

Working with Methow Valley biologists and environmental educators Rob and John Crandall—who are part of Watershed Watchers, a watershed education program hosted by the Methow Salmon Recovery Foundation—students learned about riparian monitoring, aquatic insects, salmon anatomy, riparian planting, riparian plant identification, and salmon life cycles. After an initial classroom session, students traveled to nearby Salmon Creek to plant some trees in the riparian zone as part of larger restoration efforts.

Students then examined and sketched images of the birds, insects, fish, and mammals that reside in the local watershed. The final component of the residency included working with Methow Valley printmakers Laura Gunnip and Emily Post to design, carve, and create print using linoleum blocks and carving tools.

In addition to learning about riparian habitat and inhabitants, students developed manual dexterity and an understanding of the basic printmaking process. They explored the use of negative and positive space, developed a graphic image using texture and contrast, and learned to communicate a theme through images. They also increased their confidence with the tools and the vocabulary associated with carving and printmaking, as well as with the creation of art in general. In assessment, one student reported, "I can do anything that my brain tells me to do."

This is the second year of the Okanogan blockprinting residency. Last year's student prints were displayed at the Salmon Creek Coffee Company in Okanogan and at the ARTscapes/Omak Studio, as well as at the Okanogan Days celebration and at the Okanogan County Fair -- where they won a grand champion prize!

This residency was created by Methow Arts Alliance and sponsored by Hamilton Farm Equipment, Okanogan Kiwanis, Okanogan-Omak Rotary, Methow Salmon Recovery Foundation, the Okanogan School District, the Community Foundation of North Central WA, the National Endowment for the Arts, and Arts Washington.

CONTACT: Methow Arts Alliance, 509.997.4004, info@methowartsalliance.org.



"Owl" by Okanogan 4th grade student Ana Ray



[THE METHOW VALLEY CHAMBER MUSIC FESTIVAL]

ANNOUNCES NEW EXECUTIVE DIRECTOR

Nancy McKinney just joined the Methow Valley Chamber Music Festival as executive director. Nancy replaces the previous director, Jennifer Epps, who has left the festival to focus more time on her musical career. Good luck, Jennifer!

Nancy hails from Seattle, where she works as executive director of the well-regarded (and well-managed) Ballard Food Bank. She and her husband, Rich, will be moving full-time to their property on Wolf Creek in the future. "Our Festival is pleased to have attracted such an extraordinarily well-qualified candidate for this office," said board president Sandy Mackie. Nancy will spend the winter getting to know people at the festival and preparing for the upcoming summer season.

Save the date for the 2014 Chamber Music Festival from July 24 - August 2, 2014. Find more information and about ways to support the festival with year-end giving at www.methowmusicfestival.org

CONTACT: 509.996.6000, mmf@methownet.com, www.methowmusicfestival.org,



Sunflower, by Nick Crews

ski. bike. climb....
awake to your adventure.
open now in downtown Winthrop, WA

\$25 bunks, \$15 hiker/biker hut, \$60 private cabin
www.ncascadesmtnhostel.com 509.699.0568

LOCAL & REGIONAL TITLES

Local Authors
Excellent outdoor & Adventure Section
Historical Anthologies
Inland NW nature writing

509.996.2345 www.trailsendbookstore.com

2007 #1

Welcome to HARTS PASS

GRRR!

A little bit sassy...
A little bit sweet...

100% WOLVERINE!

by ERIK BROOKS

2010 to 2013

Twisp
Washington

THE HEART OF THE METHOW VALLEY

www.twispinfo.com

Twisp VIC 509.997.2926
Twisp Chamber 509.997.2020

Read all over.

Methow Valley News

Bringing you news of the Methow Valley since 1903.

Find us in print & online
www.methowvalleynews.com

HELP ERIK MAKE THIS BOOK!

VISIT "WELCOME TO HARTS PASS" ON KICKSTARTER.COM & RESERVE YOURS TODAY!
FUNDING RUNS: NOV. 19 - DEC. 19

KICKSTARTER



CASCADIA'S HOLIDAY CONCERT

Pipestone Orchestra and Cascadia Chorale, with the largest group of singers in its history, will present a broad selection of seasonal music at Cascadia's annual Holiday Concerts, December 10 and 11 in the Methow Valley Community Center.

"We have the largest chorale ever, numbering 58 singers," said director Dana Stromberger. "We have five teens singing this year, each with a parent, so that's really fun."

In her second year of leading the Cascadia Chorale, Stromberger said she's chosen musical selections reflecting themes of the holiday and the winter season. The program includes popular holiday songs such as "White Christmas" and a jazzy version of "Deck the Halls."

Songs about Hanukkah and Christmas include "Carol of the Magi," accompanied by strings and solo cello. The piece is "hauntingly beautiful," Stromberger said. Cascadia Chorale will also sing two choruses from Handel's "Messiah," accompanied by the Pipestone Orchestra, and the beautiful "Pastorale" from the Messiah will be performed by the Pipestone Orchestra strings.

With 26 musicians from the Methow Valley, and some visiting talent from the Okanogan Orchestra, the Pipestone Orchestra will accompany the choir on five songs. Conductor Tara Kaiyala Weaver will lead the orchestra in three other pieces, including "Christmas Waltz" by Tchaikovsky, "Let It Snow!" and "German Carol Festival," which includes six holiday songs. Weaver, in her second year as Pipestone conductor, said she chose a program that is "fun, light-hearted, recognizable and season-appropriate."

The largest chorale ever!

DATES: Dec 10, 11, 7pm, pre-concert Pipestone Youth performance, 6:30pm. **By donation.** Food at intermission will be provided by Friends of the Pool and the Methow Valley Nordic Team. **CONTACT:** 509.997.2926. **LOCATION:** MV Community Center, Twisp, WA

[METHOW ARTS]

NOMADIC MASSIVE & ARTS EDUCATION NIGHT

Montreal's own Nomadic Massive has firmly established itself as a group of premier performers and skilled musicians in a genre that has evolved from its early days of two turntables and a microphone. These musical nomads represent an open-minded Hip-Hop which finds its inspiration in the traditions of the past; combining live instrumentation, samples, and a wide array of vocal styles.

Nomadic Massive is a multilingual, multicultural, super-group and has become synonymous with energetic and crowd-moving live shows. Sharing the stage with such notable acts as Ariane Moffatt (2010) « An chante pou Ayiti », Wyclef Jean (2008), K'naan (2005), and Guru's Jazzmatazz (2008); Nomadic has also performed at world class festivals including the Montreal International Jazz Festival (2007), and in Toronto at Yonge-Dundas Square's Global Rhythms Festival (2008), and the Harbourfront Global Hip-Hop Festival (2006, 2007).



The vibe will arrive! Nomadic Massive.



The group has also left its mark internationally; initiating socio-cultural exchanges with like-minded artists from Sao Paulo, Brazil (2008) and in Havana, Cuba (2004, 2006). In both countries, these initiatives involved educational and musical workshops, concerts and studio collaborations. From these enriching exchanges, the grassroots "Get Down" mix-tape series came to life; showcasing the collaborations as well as solo contributions from Brazilian and Cuban artists. Functioning somewhat as ambassadors, Nomadic continues to redefine what Hip-Hop can achieve on a global level. As the group's ongoing explorations open up new ways to interpret a musical style that has traditionally been marginalized, the "more" that has always existed in the Hip-Hop movement is revealed in everything that is Nomadic Massive.

The evening opens with a performance by local students who have learned hip hop in artist residencies in their schools and celebrates the power of art in our communities.

DATE: Sat, Feb 1, 7pm. **LOCATION:** The Winthrop Barn. **TICKETS:** Twisp Daily Business, Riverside Printing Winthrop, Brownpapertickets.com and Methow Arts in Twisp. Price TBA. **CONTACT:** Methow Arts (.org), 509.997.4004, info@methowartsalliance.org

BLUE STAR
COFFEE ROASTERS



ESPRESSO BLEND
BOLD • SWEET • BEAUTIFUL



Always Good!

BLUESTARCOFFEEROASTERS.COM • TWISP, WA

RHINEHART
CONSTRUCTION
QUALITY HOMES & REMODELS
FOR 21 YEARS!



MARK RHINEHART
PO BOX 819 | WINTHROP, WA 98862
509.996.3396



RHINO@METHOWNET.COM
LIC. #RHINECC0207JT

Ginger Reddinton

Feature by Marcy Stamper. Photography by E.A. Weymuller

The people, animals—and even trees—in Ginger Reddinton’s paintings pulse with such vitality that they often extend beyond the frame, as if propelled by so much speed or energy that they can’t be contained.

“I’ve seen things most people don’t get to see, gone places most people don’t get to go, and had adventures most people don’t get to have,” she said.

Even her approach to painting—generally thought of as one of the more sedentary art forms—is quite physical, involving vigorous scraping of wax as part of a multi-step process.

Reddinton started her life in art at age six, bicycling to and from oil-painting lessons. But between working as an art instructor, running a business raising and breeding show horses, and raising a family, she had to fit in her painting when she could.

When the Reddingtons moved to the Methow nine years ago, she was able to channel more of that energy into her art. Ginger’s husband, Don, whom she calls her greatest supporter, presented her with a shed he had converted to a studio. “I told her to go for it as an artist,” said Don. He also urged her to experiment with a new style.

“I was doing classic watercolor and realism, as I’d been taught,” said Ginger. Although back in high school she had dabbled in abstract paintings with exaggerated, surreal colors, she painted representational landscapes for most of her career. “But Don is pretty intuitive,” she said.

It took her six months to arrive at a new aesthetic and to perfect the technique to achieve it, which expands on a popular lesson she did with her young students. They would draw in oil pastels, outline the image with a ribbon of glue, and then cover the whole thing with a solution of black India ink and dish soap. When it all dried, the kids would scratch between the three-dimensional glue lines to

reveal their picture. “They absolutely loved it,” said Reddinton.

Reddinton has refined the technique, incorporating layers of watercolors and acrylics, raised contours, and two applications of wax. The seven-step process gives her work a sense of depth and character and the wax provides sheen and protection.

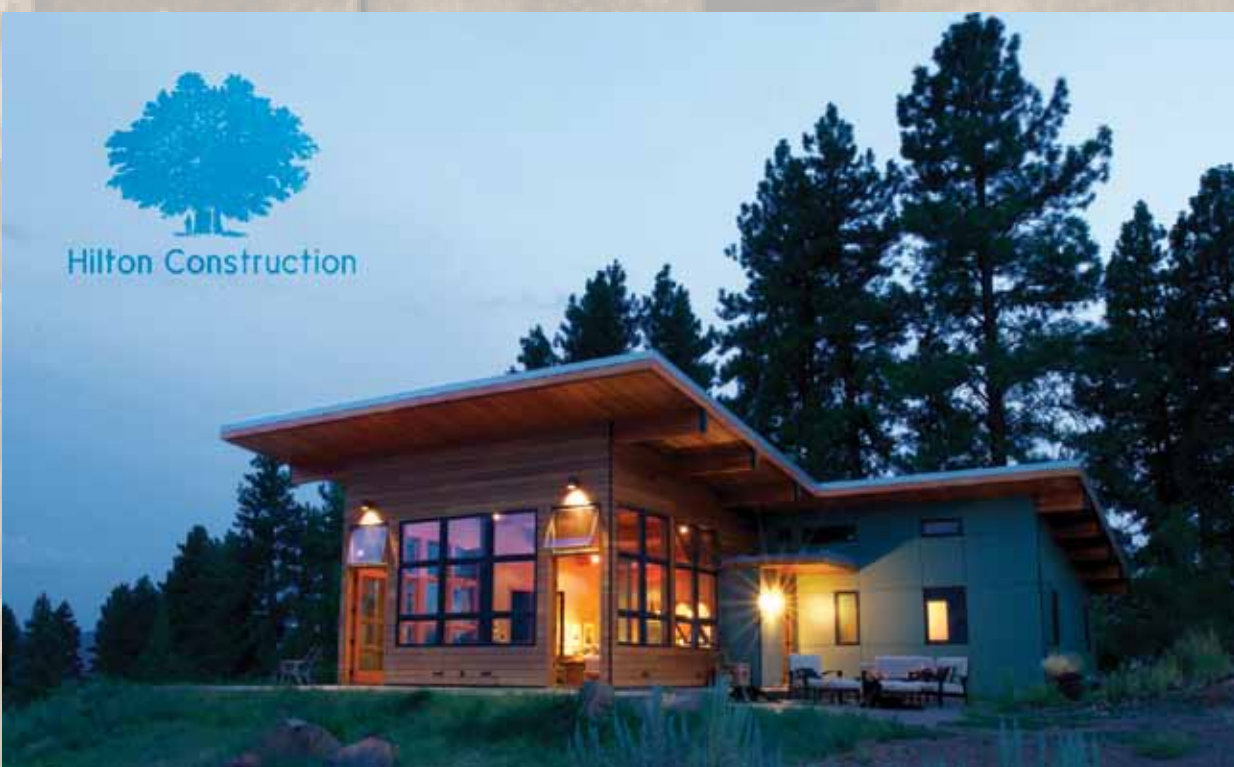
It’s also a somewhat unusual approach to creating visual art, since the entire image gets covered up during the process. “During the last stage—after I get it all sealed—you can’t see it anymore till I scrape it,” said Reddinton.



Ginger Reddinton showcases her paintings at Spring Creek Ranch in Winthrop.

“They’re not confined,” said Reddinton. And neither is she. She bought her first horse when she was a girl and would stay out all day riding him, covering hundreds of miles in the then-unpopulated area near Tacoma. She has since packed into much of the high country in the North Cascades.

This passion for exploring is central to Reddinton’s creative process as an artist. “I have to experience stuff to paint,” she said. If the sun hits the hills in a certain way, she may take a photo as a reference, but it is the feeling of being on her horse or in the mountains that she wants to convey through her art.



www.hiltonconstruction.com

lic. HLTOC1009MK

Unconfined Spaces

As she worked to depict her experiences, Reddington's style became looser, drawing on her affinity for abstraction and fields of bright color and favoring the tight framing that gives her subjects that distinctive energy. "It's realism, but it's not," she said. "It's basically blobs of color, but it works."

Reddington has refined the technique, incorporating layers of watercolors and acrylics, raised contours, and two applications of wax.

She also uses shapes that convey fluidity and movement. One recurring motif is the circle, both as a symbol and as a compositional device. In one painting, a circle of foals essentially creates its own frame. Her paintings of fish often show them cycling as if caught in an eddy. "Circles are really important," said Reddington. "They reflect the circle of life—and the nature of relationships."

Reddington paints some subjects from a wider vantage point. Paintings of a high-mountain ridge before a storm, a field of haystacks, and the Seattle skyline (a rare urban subject for her) are all pulled back far enough to highlight the drama of the sky.

While most of Reddington's paintings are of nature and wildlife, and people like climbers and mountain bikers in those environments, she still enjoys painting the rusted cars and trucks that have become a part of the landscape themselves.

Reddington's distinctive style has resonated with collectors and galleries—these days, she averages about one sale a week, and last year sold 59 paintings. She points to one yardstick of her success—she and Don have a weekly dinner date, and Ginger treats when she has sold a painting. It's been five years since Don has bought his own dinner.

Reddington believes in making art affordable. "I want my paintings available not just for people with extra money who are collectors,

but for people who like the Methow and for young people just getting into art," she said. Many of her clients have visited the valley or found her through her website. "There are not many states I don't have a painting in," she said.

Reddington also gets numerous commissions. "I involve the people from day one," she said. She sends photos of every stage, from the initial sketch through the layering process, so that her clients can participate. "They love being a part of it—they've created a child. And it's fun for me to be part of it, trying to capture their heart and put it on canvas," she said.

residents flourished when given the opportunity to express themselves creatively. "Their days were so structured, but in art class, they could just let their minds flow and come in and enjoy it. Doing it was as much fun as the product—that was really important," she said.

Despite a series of back surgeries for a condition that could have left her paralyzed, Reddington is still out mountain climbing, skiing, and mountain biking in the woods near her home. One of the few things she's had to give up since the surgery is snowboarding, which she did for the first time to celebrate her 60th birthday.

"I'm supposed to be more cautious," she said, "but when you're given more time, you've got to use it to the fullest."



Reddington, using her time as an artist to its fullest!

Devoting time to her painting is "the gift of retirement," she said. "I'm having so much fun that I don't realize it's turned into a business. As a person who was happy being a recluse and doing things with my husband, I've met amazing friends as clients."

Reddington recalls a lesson in keeping art vital from the time she spent as an artist-in-residence in a juvenile-detention facility. Despite the presence of armed guards, the young

In addition to special exhibits in the Methow, Wenatchee and Leavenworth, Reddington's art is typically on view at several venues in the area. She has a regular, changing exhibit at the Twisp River Pub, and often shows at the Methow Valley Inn, Twisp River Suites and the Country Clinic in Winthrop. She is exhibiting at the Lost River Winery tasting room in Seattle through the end of March. She'll have shows at the Cinnamon Twisp and Rocking Horse bakeries next year.

METHOW SALMON RECOVERY FOUNDATION
 SALMON - PUBLIC ART - EDUCATION - HABITAT - COMMUNITY
 509.429.1232 - www.MethowSalmonRecoveryFoundation.org

Rocking Horse BAKERY
 Delectable breads, pastries, espresso, teas, soups and sandwiches featuring locally produced ingredients.....all handcrafted daily
 265 Riverside Ave, Winthrop, WA 509-996-4241 **OPEN EVERY DAY**

Animate Objects Physical Theatre
 Dec 6, 7PM
 Acrobats, Stunts & More!

Nomadic Massive
 Jan 31, 7PM
 Global Hip-Hop from Montreal.

Bronn Journey
 Mar 14, 7PM
 An inspiring harp and voice performance.

Your performing arts center
OMAK PAC
 omakpac.org
 20 south cedar omak, wa 509.826.8323

WINTER JAZZ AT THE MERC

Winter Jazz at the Merc is back in 2014, with a three-event series directed by pianist and composer Lynette Westendorf, in collaboration with Terry Hunt. Dates for the series are Tuesday, January 14; Friday, February 22; and Saturday March 28.

All events will feature Wenatchee musicians Steve Sanders and Mike Conrad on bass and drums, along with Lynette and Terry on piano and guitar. Throughout the series, other local and regional musicians will be joining the ensemble, including Mike Harvey on trombone, Wayne Mendro on horns, Bob Hougham on trumpet, with guest appearances by the Pipestone Jazz Ensemble, Laura Love, and others.

Various musical surprises are in store this series. In addition to the creative and eclectic compositions by members of the ensemble, one event will feature a jazz take on classical music. Watch the newspaper and events calendars for details of the individual concerts and performers.

DATES: Jan 14, Feb 22 and Sat 28. TICKETS: \$15/adults, \$5/youth. LOCATION: The Merc Playhouse, Twisp. CONTACT: LOCATION: The Merc Playhouse, 101 S. Glover St, Twisp; Call Lynette, 509.996.3418.



Lynette Westendorff and Winter Jazz offers three dates. Photo by Daniel Sheehan.

[CONFLUENCE GALLERY]

WOMEN

Mar 8-Apr 19

Opening Reception
Mar 8, 4-8pm

The Confluence Gallery & Art Center hosts an exhibit called "Women". The show will begin on March 8th, International Women's Day. The duration of the exhibit will be 39 days. Thirty nine female artists from throughout the region will display one piece of art created in response to the word "Woman". They will also write a minimum of one paragraph (maximum of 1 page) on what it means for you to be a woman. Confluence will create a blog post every day throughout the exhibit, each day featuring one of the 39 artists involved in the show. The artists' writing will be shared during the show and at the time of the blog post.

Confluence is partnering with the Merc Playhouse for International Women's month – they plan to hold a thought-provoking reading on women's issues.

On March 29, the Confluence plans to hold a discussion featuring a diverse group of working women in the Methow Valley.

DATE: Mar 8-Apr 19; Opening Reception Mar 8, 4-8pm. CONTACT: Confluence Gallery & Art Center, 509.997.2787, info@confluencegallery.com.



The exquisite prints of Jessica Spring. At Door No. 3 thru March 20.

[DOOR NO. 3]

JESSICA SPRING OF SPRINGTIDE PRESS

THE VOLUME 5: PO-ST SERIES AND DAREDEVIL LETTERPRESS PRINTING!

Door No. 3 Print & Book Art Studio warmly welcomes Jessica Spring for an exhibition of original prints along with a hands-on 'Daredevil Letterpress Valentine's' workshop. Jessica Spring is the proprietor of Springtide Press (www.springtidepress.com) in Tacoma, WA where she designs, prints, and binds artist books, broadsides and ephemera -- incorporating handmade paper and letterpress printing. This (formerly) cutting edge technology requires lots of lead type, heavy presses, and heaps of patience. Spring is a collaborator in the ongoing Dead Feminists series and teaches book arts and typography at Pacific Lutheran University.

Spring will be showing her "Volume 5: Po-St" series, with prints incorporating letterpress and collage. Born out of wandering through Volume 5 of The Golden Book Illustrated Dictionary, Jessica's "wandering" is today's equivalent to browsing the internet while strolling down memory lane. Her illustrations and words delight in their obsolescence. Each print incorporates collaged elements from the actual dictionary with ephemera, wood & metal type, and one sentence including the phonetic spelling of the chosen word. These playful exquisite prints will be on view at an open house dinner reception at Door No. 3 on Saturday, January 18 from 5 - 7pm.

On Sunday, Jan 19, 10am-4pm, Jessica teaches the one-day "Daredevil Letter Press Valentine's Workshop."

DATE: Open House Dinner Reception, Sat, Jan 18, 5-7pm; Exhibit runs through March 20; Letter Press Workshop, Sun, Jan 19, 10-4pm. LOCATION: Door No. 3, Room 3 at the Methow Valley Community Center, Twisp, WA. CONTACT: doorno3twisp@gmail.com, 509.997.2044

methow cycle and sport

the Valley's friendly bicycle shop in the heart of downtown Winthrop

Sales, Service, Repair & Rentals
Bicycles, clothing, parts & accessories

9:30 - 6pm Monday - Saturday
9:30 - 5pm - Sunday

996-3645 • 29 Highway 20
Joe Brown • methowcyclesport.com

Celebrations
VIDEOGRAPHY

509.429.0454

Serving all of
Okanogan County

www.celebrations-video.com

The Country Clinic

Ann Diamond, MD
Christopher Hogness, MD
Leesa Linck, MD
Danielle Micheletti, PA-C

BOARD CERTIFIED
Family Medicine - Internal Medicine
Pediatrics - Medical Genetics

PO Box 945
1116 Hwy 20
Winthrop, WA 98862-0945
Office (509) 996-8180
FAX (509) 996-3374

METHOW VALLEY SANITATION SERVICE & RECYCLING ROUNDUP HAVE JOINED FORCES TO CREATE:

WASTEWISE
METHOW

- RECYCLING & GARBAGE SERVICES
- COMMERCIAL & RESIDENTIAL
- LOCALLY OWNED & OPERATED
- 509-997-8862 • WASTEWISEMETHOW.COM

CINNAMON TWISP
BAKERY

Good Energy
Food for the whole Family!

Mon - Sat, 6am - 3pm
Organic Grains & Flours! Organic Espresso Too!

116 N Glover Street Twisp WA 98856 509.997.5030
Free Internet Access!

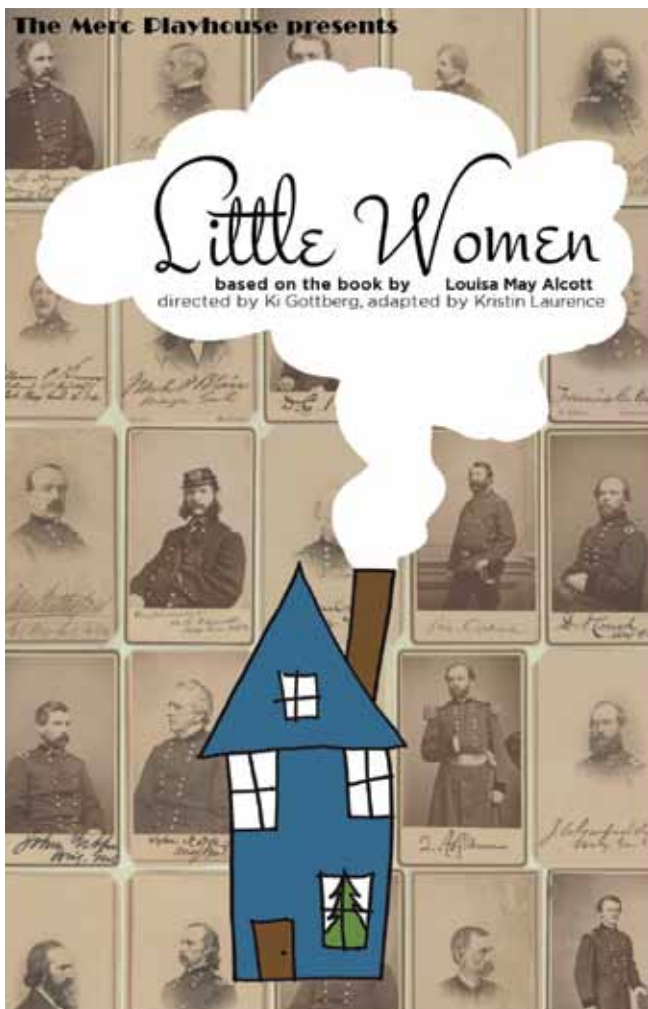
SHADOWLINE
DESIGN & CONSTRUCTION, INC.

THE DREAM MAKERS

DONALD K. MILLER
509 996 3200

shadowline@methow.com

Web Page
methow.com/shadowline



Bring down the house with Little Women at the Merc

[THE MERC PLAYHOUSE]

LOUISA MAY ALCOTT'S LITTLE WOMEN

Adapted by Kristin Laurence

The play begins that memorable Christmas when Marmee leaves to visit her sick husband and Jo sells her beautiful hair to help finance the trip. It ends just a year later when the happy family is again preparing to celebrate not only Christmas but also the return of Mr. March. In between these two events, we again live, laugh, love and cry with Meg, Jo, Amy and Beth as they go through the many trials and tribulations that have made this story a classic.

Directed by Ki Gottberg, Little Women features the talents of Anne Andersen, Jill Beckerman, Amelia Eberline, Gretta Eberline, Renda Grim, Lauren Kurtz, Lori Ludeman, Cece Odell and Jane Pappidas.

DATES: Dec 6-22, Thursday, Friday, Saturday, 7pm and Sunday, 2pm. TICKETS: Adults/\$15, Youth/\$5, 18 & under. "Pay What You Can" performance Thurs, Dec. 12, 7pm. LOCATION: The Merc Playhouse, 101 S. Glover St, Twisp; 509.997.PLAY (7529); www.mercplayhouse.org.



Sunflowers, left to right by Rio Lott, Alea Colin, and Riley Zawicki

[DOOR NO. 3]

6TH ANNUAL PROJECT VALENTINE: LOVE IS THE ANSWER!

FEBRUARY 14

For the past five years, Door No. 3 Print & Book Art Studio has sent out nearly 100 handmade Valentine's from secret admirers (that's YOU!) to nominated residents around the Methow Valley. Is there someone you know who needs a little extra love and attention this year? Love is the answer!

Please nominate your secret Valentine, neighbor, family or friend and then join in for the Valentine's making class on February 12!

DATE: Nominate by February 12 for delivery on February 14.

NOMINATIONS AT:

Door No. 3, drop box: Room 3 at the MV Community Center,
By mail: PO Box 817, Twisp, WA 98856
By email: doorno3twisp@gmail.com



Sunflower, by Rose Heath

— ICICLE BROADCASTING, CO. —



H O M E T O W N R A D I O

509-682-4033 • 123 East Johnson Avenue • Chelan, WA 98816

[CONFLUENCE GALLERY]

BLACK TIE: VINTAGE SKI LODGE A NOSTALGIC HOLIDAY CELEBRATION

Confluence Gallery and Art Center invites you to celebrate the holidays with a nostalgic evening in a cozy, vintage ski lodge. Slip into your finest party wear - new or vintage - and go back in time to the days of wooden skis and snowshoes, toboggans and sleigh rides. Begin the evening with a complimentary glass of champagne, enjoy a variety of delicious hors d'oeuvres, and warm up with a tasty mug of gluhwein. Again this year David Weidig will provide beautiful guitar music of the season.

DATE: Sat, Dec 14, 7-10pm. TICKETS: \$20/person or \$35/couple. Since space is limited, it is suggested that you make a reservation and purchase your tickets in advance. CONTACT: Confluence Gallery, 509.997.2787, info@confluencegallery.com.



[CASCADIA]

KEYBOARD CONFECTIONS

Cascadia is proud to present its annual scholarship fundraiser, piano concert and gourmet dessert event Keyboard Confections on Saturday, March 1st at the Community Center in Twisp. This year, as in years past, Keyboard Confections features a showcase of the best local piano talent, as well as a regional professional pianist. This year Cascadia is very excited to present award-winning Spokane pianist Kendall Feeney and her duet partner Rachele Ventura.

Kendall Feeney has been a major talent in the northwest for many years, both as a pianist and ensemble musician. On the faculty of Eastern Washington University, she is also director of the EWU Contemporary Music Ensemble. She has performed as both soloist and chamber musician throughout the U.S. and Asia and has been featured on NPR's "Performance Today." From 1991 to 2003, Feeney was Artistic Director of Zephyr, one of the most significant chamber music ensembles in the Northwest. She is currently principle pianist for the Spokane Symphony, and makes regular guest appearances throughout the region.

Canadian pianist Rachele Ventura is an active Spokane area accompanist, performer and adjunct faculty member at Spokane Falls Community College and Whitworth University. She is director of the Music in Millwood chamber music series.

Both adult and student pianists from the Methow Valley will be featured for Keyboard Confections. Those interested in performing are invited to contact Lynette Westendorf at 509.996.3418.

DATE: Sat, Mar 1. LOCATION: Methow Valley Community Center, Twisp. CONTACT: For information on program and tickets, 509.996.3418.



Pianist Rachele Ventura

[WINTHROP GALLERY]

HOLIDAY GIFT SHOW

For the best in regional giftware, be sure to visit the Winthrop Gallery's annual Holiday Gift Show. Each year the gallery invites artists and crafters from throughout the region to bring their finest giftware to this show.

Get into the holiday spirit by joining local singer/songwriter Lauralee Northcott for Christmas Carol singalongs at the Winthrop Gallery. The first will be held on Sunday December 15th from 2 to 3pm. Lauralee will lead a second singalong on Sunday December 22nd from 2 to 3pm. These events are free.

This show runs through January 6. The Winthrop Gallery is located at 237 Riverside in downtown Winthrop. Winter hours for the gallery are 10am to 5pm, Wednesday through Monday. For more information contact the gallery at (509) 996-3925 or visit the gallery's website at www.winthropgallery.com.

DATES: Runs through January 6. LOCATION: The Winthrop Gallery, 237 Riverside, downtown Winthrop. HOURS: Winter hours for the gallery are 10am to 5pm, Thursday through Monday. CONTACT: 509.996.3925 or www.winthropgallery.com.



Sunflowers, left to right by, Malcolm Bosco, Cade Hink, and Ethan Cramer Michelsen

FREESTONE INN
AT WILSON RANCH

The Freestone Inn strives to deliver an incomparable dining experience by combining classic French cooking principles with the best available ingredients and diverse world food traditions to craft menu offerings designed from a contemporary perspective. Stunning lakeshore views, our vaulted ceilings and giant river-rock fireplace create a mountain dining experience you'll never forget.

On the trail? Join us for trailside cocktails, delicious treats and warm hospitality

509.996.3906 / 800.639.3809 ♦ www.freestoneinn.com
31 Early Winters Drive, Mazama, Washington

Laura Aspenwall Ouzel Glassworks
227 Wolf Creek Road, Winthrop
(509) 996-3316
www.ouzelglass.com

TWISP RIVER PUB

12 MICRO BREWS ON TAP
FINE WINES & FULL BAR
FRESH GROUND BURGERS
GOURMET SANDWICHES
SPECIALTY SALADS
STEAK - PASTA
SEAFOOD & MORE!

Sign up for our NEW email newsletter on our website and find out what's happening at the pub

LIVE MUSIC EVERY WEEKEND!
Check our website to view our menu & for a complete live music schedule.

FREE WIRELESS INTERNET

WINTER HOURS:
THURSDAY through SUNDAY
11:30 am - 8:30 pm

www.**TWISPRIVERPUB**.COM
201 N Hwy 20 (509) 997-6822

Integrated Design Concepts, Inc.
A CUSTOM DRAFTING & DESIGN SERVICE

RESIDENTIAL, COMMERCIAL & LIGHT INDUSTRIAL DESIGN

Howard Cherrington
PO Box 681
Twisp, WA 98856
509.997.4865

www.integrateddesignconcepts.com

Alpine
DESIGNS 2000, Inc.
CABINET SALES

- Mobile Showroom
- Personalized Services
- Computerized Kitchen Design
- Corian & Granite Countertops
- Wholesale Appliances

Marc Robertson
P.O. Box 844
Winthrop, WA 98862
Office 509/996-3771
Fax 509/996-3871
Mobile 509/669-0777

THE YAWP: AN INTERVIEW WITH AMALIA WEBBER

THE VALUE OF CREATING A MAGAZINE FOR THE VISUAL AND LITERARY ARTS

Amalia Webber is a Senior at Liberty Bell High School in the Methow Valley and a Methow Arts Alliance intern in Twisp. Here she talks with Methow Arts director Amanda Jackson Mott about her new endeavor to design and publish "the Yawp", a Literary and Visual Art Journal of local high school students' works. The first publication will hit stands in January at the latest with two more to follow.

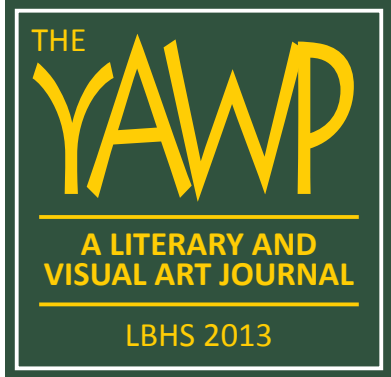
Q. So, you'll be publishing a Literary and Art Journal named the Yawp at Liberty Bell High School. How did this project come about? And why is called the Yawp?

A: I first thought of creating a magazine when coming up with ideas for my senior project. I knew I wanted to do something no one had done before and I wanted it to be creative. One day I was brainstorming with my friend Patti Watson, and we both agreed that we knew who the "theater kids" or "music kids" were in our school, but we didn't know who the talented writers or artists were. So, from here we decided to create a magazine specifically for visual and literary art in order to give our classmates more exposure.

Our project advisor, Adam Kaufman came up with the name "The Yawp". It is a reference to the poem "Song of Myself" by Walt Whitman where he writes "I sound my barbaric yawp over the rooftops of the world." It's a metaphor for artistic expression.



Amalia Webber, co-designer and publisher of The YAWP



Q. How is the project organized? Who is doing the work finding, selecting and placing the artwork?

A: I am the editor for the art portion of the magazine, while Patti is the editor for the literary portion. Together we collect work by talking to teachers and reaching out to students from 7th - 12th grade. Once they submit, we go through all the submissions together and select which ones to publish.

Q. Why did you choose to get involved?

A: I'm interested in magazine layout and design as a career, so this is giving me a chance to explore that before college, while also doing something I think could make a real difference. I know how great it feels to be recognized for performing arts so I hope more writers and visual artists will start to get the same recognition.

Q. What will make this project different/interesting?

A: As editors we're trying to be creative in how we curate and select the work. We're not just tossing down poems, paintings, and short stories on a page, but we're trying to give the magazine a cohesive design. This is also the only student run publication in the community, which makes reading a bit more intimate.

Q. Where will it be distributed? How can we get our hands on it and WHEN? How often?

A: You'll be able to find The Yawp at Rocking Horse Bakery, Twisp Works, Confluence Gallery, Methow Arts, Liberty Bell High School and other locations. We're hoping to publish 3 issues- one in December, March, and June.

Q. Will there be an online component or is it just printed?

A: Right now the magazine will just be in print, but if we find that people would prefer to see it online, we might switch to an online magazine or blog.

Q. Can the community subscribe or have it delivered in their mailbox?

A: Yes! Details will be coming later and posted on The Yawp's Facebook page.

Look for more information or contact us at Methow Arts, 509.997.4004, info@methowartsalliance.org.



Sunflowers, top to bottom by Sam Patterson and Emma White

Art That Kicks Butt

Ginger Reddington
H: 509.997.2721
C: 509.995.2471
www.gingerreddington.com

Pine Near
R.V. Park Campground
WINTHROP
Wish you were here
www.pinepark.com
CABINS & RV SITES OPEN ALL WINTER!
509.341.4062

Phil Woras
woodworker

fine
hardwood
furniture &
cabinets

509.996.2589

Come see what everyone's talking about!

twisp river
hotel suites

Luxuriously appointed suites with full kitchens, fireplaces, private decks, flat screen TVs, memory foam mattresses, and much more!

welcome home.
www.TwispRiverSuites.com
997-0100 • 855-784-8328 • Twisp, WA

THREE RIVERS HOSPITAL

507 Hospital Way
Brewster WA 98812
509.689.2517
www.threerivershospital.net

ORGANIC METHOW RADIO
radioroot.com

[METHOW ARTS ALLIANCE]

ART + BUSINESS + COMMUNITY = SUCCESS

We invite you to partake in our ARTscapes Success Party on WED, DEC 4th, 4:30-6pm at 7 south Main Street, Omak, WA (the former Main Street Bar and Grill).

The ARTscapes/Main Street Building Project in Omak announces a huge success in meeting our goal: to transform the vacant commercial space by bringing artist Bruce Townsend into the space for 3-6 months, increase pedestrian traffic in the downtown area and to ultimately sell the property. WE'VE MET OUR GOALS!

With plans to purchase the property a buyer will soon occupy the space, transforming it into "The Creamery Coffee House." The buyer will feature local artists in the business and hopes to include murals on the exterior courtesy of local high school students. Artist Bruce Townsend Cook of Riverside, Washington has used the space graciously donated by NCW Loan Fund since May as a second art studio for his glassblowing and metal work. ARTscapes is a project of Methow Arts Alliance, a non-profit organization committed to enriching the lives people living in Okanogan County through Education, Leadership, Artist/Art Promotion and a diverse Presenting Season. Methow Arts is looking for interested artists and commercial property owners for future ventures. Liability Insurance for each project and all aspects of the projects are coordinated by Methow Arts Alliance.

DATE: Wed, Dec 4, 4:30-6pm. LOCATION: ARTscapes/Omak, 7 S. Main St., Omak, WA. CONTACT: Methow Arts (.org), 509.997.4004, info@methowartsalliance.org



[CASCADIA AND METHOW MUSICIANS]

MAKING MUSIC TOGETHER

Music education is at the heart of Cascadia, and the organization continues to expand its opportunities for valley residents to learn and perform a variety of music.

This past summer, Cascadia collaborated with the Shafer Museum in Winthrop to present "A Musical Journey Through Time," a weekend of demonstrations, discussions of the history of American fiddle music, and workshops in fiddle playing taught by guest performers, "Prairie Spring."

Ongoing music education is offered through the Pipestone School of Music, with more than 100 students enrolled in private music lessons. Pipestone, the educational branch of Cascadia, has a faculty of talented music teachers and helps connect interested students with instructors.

Pipestone music instructors also bring music education into the public schools through Suzuki violin lessons. For the past 10 years, through a grant from the Public School Funding Alliance, Suzuki instructor Pam Hunt has introduced hundreds of third and fourth grade students to the violin.

That program has led to the creation of an orchestra at Liberty Bell High School, where Hunt also provides tutoring to violin students. Violinist Tara Kaiyala Weaver conducts the Pipestone Youth Orchestra, which meets at Methow Valley Elementary school and provides students an opportunity to experience the challenge and joy of playing with other musicians. Many young musicians move on to play in the adult Pipestone Orchestra.

To enable as many students as possible to study music, Cascadia has an active scholarship program. Students who need assistance with lesson tuition may apply for a Christine Cherrington Scholarship. Several students also receive sponsorships from community members, and many Pipestone students play on instruments provided at no charge by Cascadia.

Pipestone's annual Summer Music Camp draws students from around the region for a week of individual and group lessons and performance opportunities. This year, at the request of adults who wanted in on the fun, the camp was expanded to include adult students. "Our slogan is 'making music together,' and we attempt to give all community members opportunities to be part of our local music community," said Neil Johnson, a member of Cascadia's board of directors.

CONTACT/INFO: For more information about Cascadia and its educational and performance opportunities, go to www.cascadiamusic.org or call 509.997.0222.



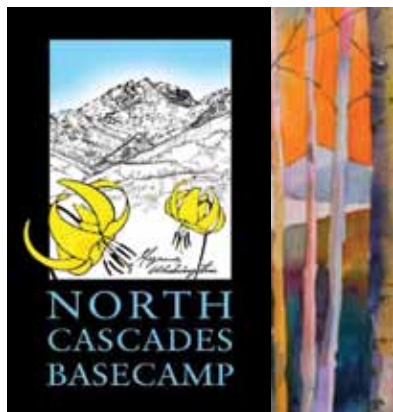
The 2014 Letterpress Calendar!

[DOOR NO. 3]

MENTORSHIP & COLLABORATION 2014 AND BEYOND!

If recent ventures with Jessica Spring (see article) and Mighty Tieton's Goat Head Press are any indication, then Laura Gunnip and Robin Doggett are on a roll! As the hands & hearts behind Door No. 3 Print & Book Art Studio, they are humble as both teachers and artists, but are becoming great connectors to the broader printmaking scene in Washington State. Stay tuned for spring to hear more about their collaboration with the Methow Conservancy and artists around the Valley.

LOCATION: Door No. 3, Room 3 at the MV Community Center, Twisp, WA. CONTACT: doorno3twisp@gmail.com, 509.997.2044



NORTH CASCADE BASECAMP'S WINTER ECOLOGY CENTER PROGRAMS

- Watercolor Classes & Workshops
- Nature of Winter Snowshoe Tours
- Bald Eagle Citizen Science Program
- Thursday Community Soup & Presentation Series

Open to everyone with weekly local NW guest speakers (Dec - Feb)

Visit www.northcascadesbasecamp.com/upcoming-events for the latest news!



509.996.2334
info@northcascadesbasecamp.com
Mazama, WA



C
U
L
L
E
R
S
T
U
D
I
O

cullerstudio@gmail.com = twispworks campus, twisp, wa

RIVER RUN INN & CABINS



On the Methow River in Winthrop, WA

Cabins, Private Rooms,
Vacation Home
Indoor Pool & Hot Tub

800.757.2709

www.RiverRun-Inn.com



TACKMAN
SURVEYING
PLLC

509.996.3409

112 Hwy 20 in Winthrop

www.tackmansurveying.com



[METHOW ARTS ALLIANCE]

Ignite your February with fierce Ballroom Dancing and "A Dancing with Your Stars Local Contest".

UTAH BALLROOM DANCE COMPANY & DANCING WITH YOUR STARS – METHOW VALLEY

Join Methow Arts for a spectacular evening showcasing 22 different styles of Ballroom Dance. Taking our nation by storm, ballroom dance is re-igniting a passion for this electrifying style of dance. Thrilling audiences worldwide through this unique form of dance is the Utah Ballroom Dance Company (UBDC). This company which features some of nation's top ballroom dance athletes who have performed nationally and internationally receiving numerous accolades and awards such as the coveted U.S. National Formation Championships.

The evening starts with a **Dancing with your Stars Locals Competition**. What do you get when you take six local stars, pair them with six professional ballroom dancers, and give them one week to practice? Dancing with your Stars – Methow Valley style. Don't miss the opportunity to watch these couples compete for 1st place, receive commentary from local judges and dance their hearts out in full costume! Interested dancers and judges are welcome to apply by Wednesday, January 8th.

The second half of the evening showcases an array of professional dance combos including both latin and traditional styles of ballroom dance. Audiences are treated to breath-taking lifts, hundreds of beautiful costumes, captivating theatrical story lines and a variety of classical and exotic ballroom dances that will keep you on the edge of your seat.

DATE: Sat, Mar 8, 7pm. Deadline for interested dancers and judges is Wed, Jan 8 by email: info@methowartsalliance.org. LOCATION: The Winthrop Barn. TICKETS: Prices to be announced, Twisp Daily Business, Riverside Printing in Winthrop, Methow Arts Office in Twisp and online at brownpapertickets.com. CONTACT: Methow Arts (.org), 509.997.4004, info@methowartsalliance.org



POETRY OUT LOUD DEC 18, 6PM, MERC PLAYHOUSE

The competition, presented in partnership with the Washington State Arts Commission, the National Endowment for the Arts, the Poetry Foundation, the Public School Funding Alliance, and Methow Arts, is part of a national program that encourages high school students to learn about poetry through memorization, performance, and competition. Thirteen students from Liberty Bell H.S. and the Independent Learning Center will participate in the Poetry Out Loud school contest at The Merc Playhouse. The winner of this competition will advance to the Eastern Washington Regional Poetry Out Loud contest in Spokane. The Washington State champion will advance to the Poetry Out Loud National Finals in Washington, DC, where \$50,000 in awards and school stipends will be distributed.



Winthrop GALLERY
www.WINTHROPGALLERY.COM
PO BOX 272 WINTHROP WA 98862 (509) 996-3925

REFLECTED LIGHT PHOTOGRAPHY



WEDDINGS - EVENTS - PORTRAITS

Teri J. Pieper
509.997.0995
www.teripieper.com
teri@teripieper.com

mountainous fun



AT SUN MOUNTAIN LODGE

Washington's finest resort near Winthrop is the ultimate vacation destination.

Panoramic mountain views inspire you at every turn. Enjoy award-winning cuisine, fabulous wine cellar and a wide range of recreation—tennis, mountain biking, swimming, horseback riding, golf (nearby) and a full service spa. Call today!



dreamy rooms 360° panorama manage for two room service treats starlit nights gourmet delights

SUN MOUNTAIN LODGE

800-572-0493
www.sunmountainlodge.com
Winthrop, Washington



[METHOW ARTS ALLIANCE, MVSTA, MV NORDIC CLUB]

KIOSK & PUBLIC ART PROJECT

MERGING ART WITH NATURE

Next time you're in Winthrop or Mazama be sure to take a look (or a seat) at the newly placed artwork in the kiosks at trailheads in each location. These two lucky kiosks recently received locally made public artwork from artists Jessica Dietz daCosta and Barry Stromberger. The PUBLIC ART KIOSK PROJECT is a collaborative project of Methow Arts Alliance, Methow Valley Sports Trails Association (MVSTA) and the Methow Valley Nordic Club. Bringing original and local public artwork to the Methow Valley Trail system, the project enriches the trails with the original works of our local artists. The hope is that the artwork and the design of the kiosks will attract people to them, increasing the chances that they'll read the postings about events, trail conditions, or invasive weeds they may see on the trail.

Each kiosk will feature a plaque recognizing the selected artist and connecting viewers with

our Methow Arts website and ARTIST pages (which are offered FREE to local artists).

In mid-January (date TBA), join us for a celebration for artists, collaborators and the community. Look for more information on our website www.MethowArts.org.

CONTACT: Methow Arts Alliance (.org), 509.997.4004, info@methowartsalliance.org.



Jessica Dietz daCosta, above left, and Barry Stromberger, bench right, enhance trailheads with their artwork in Winthrop and Mazama.

YOUTH PROJECTS COME ALIVE AT TWISPPWORKS

Local and visiting youth are getting connected to skills, experience and mentorship on the TwispWorks campus this fall. Now in the third year since its revival by instructor Barry Stromberger, the Liberty Bell High School welding class helps students use community and personal projects to develop skills for industry, art and life. Recent local donations and a small grant have provided the lab with both a plasma cutter and aluminum sand casting equipment. Students from the Methow Valley School District's Independent Learning Center recently applied their geometry lessons by working with TwispWorks' own Sara Ashford (Culler Studio) and



Jerry Merz (Methow Metalworks) to design and build a pair of composters for use in Ashford's new demonstration dye garden. The Valley Teen Center on the TwispWorks campus is open Wednesdays for homework nights and Fridays for hangout nights, giving kids a safe space to be themselves. Local volunteers provide a healthy meal for the teens every Friday evening, and the Winthrop Kiwanis club recently funded the development of a courtyard recreation area that will make it easy for chaperones to supervise outdoor activities. At the Methow Valley Interpretive Center, students from Omak's Paschal Sherman Indian School have worked with local volunteers to build a replica Native American pit house as part of the growing native plant garden adjacent to the Center.

CONTACT: TwispWorks, 509.997.3300

[TWISPPWORKS]

CELEBRATE DARKNESS AND LIGHT AT WINTERFEST

In the tradition of the great Nordic tribes, celebrate the season with a (mostly) outdoor gathering that brings light and warmth to the darkness and cold. The second annual Winterfest will include lantern-making for kids and adults, snow and ice sculpture (weather permitting), bonfires, music, and dancing. Artisan goods by TwispWorks tenants will be for sale along with beer, wine, hot drinks and food. Don't forget your coat and hat!

DATE: Sat, Dec 28, 4-8pm. LOCATION: TwispWorks courtyard. CONTACT: 509.997.3300, www.twispworks.org

Rob Crandal keeps it light.



Experience winter in the heart of the magnificent Methow Valley

NORDIC SKIING • ALPINE SKIING • SNOWSHOEING • SNOWMOBILING • FAT BIKING • ICE SKATING & HOCKEY

Winter the way it's supposed to be!

- Ski the nation's largest cross-country ski trail system from downtown Winthrop! Over 120 miles of world-class groomed trails right out your door will take you through spectacular winter scenery. You'll find great lodging, superb dining, lively pubs, music, galleries and shops, all here in this remarkable place.

Take a break from the ordinary.
COME TO WINTHROP.

Winthrop
WASHINGTON

WinthropWashington.com