



MAGAZINE FALL 2017



FEATURED ARTIST: HANK CRAMER

INSIDE THIS ISSUE

YOUR GUIDE TO LOCAL ARTS & CULTURE IN THE METHOW VALLEY AND BEYOND. EXHIBITS, EVENTS. CLASSES. METHOW ARTS. ACCESS TO IMAGINATION.



509-996-9969

Purple Sage Gallery




Art made by regional artists and friends.

Discover a new path to express your inner spirit today.
245 Riverside Ave. Winthrop, WA 98862


Central Reservations

Est. 1982



509-996-2148

Book your Methow Valley getaway locally. We feature licensed, legal nightly rentals and local inns, as well as extended stay homes, we are happy to provide recommendations. You are also welcome to stop by our office at 245 Riverside Ave, inside the Purple Sage Gallery on the boardwalk, downtown Winthrop and book your next stay.



Our lodging calendars are up to date 24/7 for secure online booking.
WWW.CENTRALRESERVATIONS.NET

METHOW ARTS METHOW ARTS ALLIANCE
POST OFFICE BOX 723
TWISP, WASHINGTON 98856

PRST
U.S. Postage
PAID
Wenatchee, WA 98801
Permit No. 241

FALL 2017



Amanda Jackson Mott
Executive Director,
Methow Arts Alliance

I wish all of you a vibrant Autumn season. Enjoy the abundance of creative activity offered in the Methow Valley. From innovative classes to world-renowned performance, exhibits of local artwork and theatre, Art is at the forefront of life here in the Valley.

Visit our website for updates, new listings, articles, and ticket info www.methowarts.org.
Enjoy -



Do you enjoy receiving a copy of this magazine in your mailbox? Please **renew your membership** so that we can continue your subscription. **Thank you.**

___ \$35, ___ \$50, ___ \$100, ___ other

Please mail check to: **Methow Arts, PO BOX 723, TWISP, WA 98856**

I Worried

I worried a lot. Will the garden grow, will the rivers
flow in the right direction, will the earth turn
as it was taught, and if not how shall
I correct it?
Was I right, was I wrong, will I be forgiven,
can I do better?
Will I ever be able to sing, even the sparrows
can do it and I am, well,
hopeless.
Is my eyesight fading or am I just imagining it,
am I going to get rheumatism,
lockjaw, dementia?
Finally I saw that worrying had come to nothing.
And gave it up. And took my old body
and went out into the morning,
and sang."

~ Mary Oliver, Swan: Poems and Prose Poems

METHOW ARTS

Methow Arts Alliance
109 Second Avenue, PO Box 723
Twisp, WA 98856
509.997.4004
www.MethowValleyArts.org

METHOW ARTS ALLIANCE is a non profit organization founded in 1983 that enriches the lives of our community through a variety of diverse art programs.

Board of Directors

Don Ashford, President
T. Lewis, Vice President
Frauke Rynd, Treasurer
Alison Philbin, Secretary
Jonathan Baker
Hannah Cordes

Staff

Amanda Jackson Mott, Executive Director
Ashley Lodato, Arts Education Director
Chris Moore, Office/Events Specialist



ART MAGAZINE connects audiences with the work of our many resident and visiting artists and the organizations that provide a breadth of arts programming. Our magazine is a celebration of the vision, genius and creativity that abound in the Methow Valley and beyond. To receive this publication in the mail, please become a member of our organization and we will gladly mail you a copy quarterly. Thank you for supporting a diverse and plentiful arts community.

Published and designed by Methow Arts Alliance info@methowartsalliance.org - 509.997.4004

www.methowarts.org

CONTRIBUTORS

FEATURE PHOTOGRAPHY:
Mandi J. Donohue

FEATURE ARTICLE:
Marcy Stamper



The **ART Magazine** is published quarterly by Methow Arts Alliance, a non-profit organization. All contents are copyrighted and may not be used without the express consent of the publisher.

DESIGN/LAYOUT/EDITING: Methow Arts Alliance

Subscribe: info@methowartsalliance.org
www.MethowArts.org

#accesstoimagination #methowarts

2017 ARTS PARTNERS

 Twisp, WA 98856 509.997.7529 www.mercplayhouse.org	 Winthrop Gallery 509.996.3925 www.winthropgallery.com	 cascadia music Twisp, WA 98856 509.997.4601 www.cascadiamusic.org	 IT'S REAL TWISP THE METHOW VALLEY Twisp, WA 98856 509.997.2925 www.twispinfo.com	 WINTHROP RHYTHM & BLUES FEST Winthrop Music Association 509.997.3837 www.winthropbluesfestival.com	 METHOW ARTS 109 2nd Ave, Suites B/C PO Box 723, Twisp, WA www.methowarts.org
 TWISPSWORKS TwispWorks 509.997.3300 www.twispworks.org	 CONFLUENCE gallery & art center 509.997.2787 www.confluencegallery.com	 METHOW GALLERY D*Signs and Methow Gallery 109 Glover St. Twisp, WA 98856 509.997.0255 www.twispinfo.com	 Methow Valley Chamber Festival 509.996.6000 www.methowmusicfestival.org	 door 3 no. Twisp, WA 98856 509.449.1081 info@doorno3.com www.doorno3.com	

TICKETS: METHOWARTS.ORG

SUPAMAN - SAT. FEB. 11. 2018

SUPPORTERS

THANK YOU.

METHOWHOUSEWATCH.COM
security visits, property maintenance, cleaning
509.996.3332
METHOHW847DT

CULLER = STUDIO

cullerstudio@gmail.com = twispworks campus, twisp, wa

ORGANIC GRAINS FROM PLOW TO PLATE

Bluebird Grain Farms
bluebirdgrainfarms.com

EVERGREEN IGA

920 Highway 20
Winthrop, WA
(509) 996-2525

METHOW ARTS PRESENTS

JAYME STONE'S FOLKLIFE



An album of beautiful, intriguing, thoughtful music coming from a collaboration of outstanding musicians who apply their talents together. It rewards our attention as much as it captures it, leading us to the music, rather than pushing us to it. ~ Sing Out!

MOIRA SMILEY RETURNS TO METHOW VALLEY WITH JUNO-WINNING BANJOIST JAYME STONE

Two-time Juno-winning banjoist and composer Jayme Stone makes music inspired from around the world, bridging folk, jazz, and chamber music. His award-winning albums both defy and honor the banjo's long role in the world's music, turning historical connections into compelling sounds. On his Folklife tour, Stone collaborates with Methow Valley favorite Moira Smiley as well as Sumaia Jackson and Joe Phillips.

Those who saw Moira Smiley perform with VOCO in the Methow Valley in 2011 will likely not miss the chance to see her again at the Winthrop Barn in November 2017 as part of Jayme Stone's Folklife quartet. Stemming from Stone's Lomax Project—which celebrates songs collected by folklorist and field recording pioneer Alan Lomax—Folklife treats old field recordings not as time capsules but as heirloom seeds passed down from a bygone generation. Planting these sturdy seeds in modern soil, this versatile gathering of musicians has cultivated vibrant Sea Island spirituals, Creole calypsos, and stomp-down Appalachian dance tunes for contemporary listeners.

Folklife follows the bends and bayous through the deep river of song and story. This quartet of dextrous musicians blows the dust off old songs and remakes them for modern ears. With spellbinding singing, virtuosic playing and captivating storytelling, their concerts and educational programs are moving, inventive and participatory experiences.

Jayme Stone's Folklife will be performing for students in Okanogan County schools the week of November 6th, through Methow Arts Alliance's regional arts education programs. The quartet will cap its week with a public performance at the Winthrop Barn on Sat, Nov 11 at 7pm.



TICKETS AND SHOW INFO

DATE: Sat, Nov 11, 2017, 7pm.

LOCATION: Winthrop Barn.

TICKETS: \$25/PREMIUM Reserved in first 5 rows, \$16/ADULT advance, \$19/ADULT door, \$5/student, 5-15 years. JAYMESTONE-Winthrop.brownpapertickets.com, Riverside Printing, Winthrop (behind Courtyard Quail) and Methow Arts, Twisp, Wa. Beer, wine, cocktails and sodas available for purchase. Volunteers wanted. CONTACT: info@methowartsalliance.org, 509-997-4004, www.MethowArts.org.



TRAIL'S END BOOKSTORE



UPCOMING EVENTS

SATURDAY, OCTOBER 28
HALLOWEEN/COSTUME PARTY

SUNDAY, OCTOBER 29
LOCAL AUTHOR/ARTIST HANNAH VIANO AND SEATTLE-BASED FOOD WRITER JESS THOMSON

VISIT OUR WEBSITE FOR MORE DETAILS
WWW.TRAILSENDBOOKSTORE.COM



books for all ages • hot & iced espresso drinks • games • puzzles • occasion cards & more!
open every day 10am - 6pm • 241 Riverside Ave., Winthrop, WA • 509-996-2345

FALL ART CALENDAR

EVENTS/CLASSES/EXHIBITS

Classes/artist opportunities **RED**, Exhibits **BLUE**.
More information online at www.methowarts.org

ONGOING CLASSES/EVENTS

Line Dancing

Mondays, 6 pm, Lessons at 6:30pm
\$4. Twisp Grange. 509.429.2064.

Spinners and Weavers

Thursdays, 1pm
Meet and spin/weave. 137 Old Twisp Hwy.
509.997.5666

Fix Your Gear Nights at eqpd

First Thursdays of each month, 4-7pm
Bring your sports gear to eqpd for a free and quick fix up! eqpd at TwispWorks. eqpdgear@gmail.com

Improv TwispWorks

Thursdays, 5:30pm
Practice (for all levels) at the Interpretive Center/ Twisp-works campus. By donation. 509-341-4900

Saturdays in Twisp

Saturdays
Art studios, performance, galleries, wine tasting, local food, workshops, art classes and so much more.
www.twispinfo.com

Farmer's Market

Saturdays, 9-noon. Through October.
Community Center, Twisp, WA

Open Studios at TwispWorks

Saturdays, 10-3pm
TwispWorks, Twisp, WA

SEPTEMBER

Walking the Wild Edge

Through Sept 23
Explores the beauty of wild nature and the tension of human-wild interaction at the edges of wildness. See article. Confluence Gallery, 104 Glover St, Twisp, WA, 509-997-ARTS, www.confluencegallery.com

Stephanie Hargrave B I O T A

Through Sept 23
Seattle artist Stephanie Hargrave exhibits encaustic painting inspired by botany, biology and abstract organic imagery. See article. Confluence Gallery, 104 Glover St, Twisp, WA, 509-997-ARTS, www.confluencegallery.com

Prismatic Optical Phenomena

Sat, Sept 2- Oct 21.
Reception: Sat, Sept 9, 6-10pm;
Gallery Talk: Sun, Sept 10, 11am.
See article. At 24 HR Mart, 112 Glover St, Twisp, WA. max@twentyfourhourmart.com, www.facebook.com/pg/24hrmart

Adult Pottery Class with Jim Neupert

Mondays and Wednesdays, 5:30-8:30pm
\$20/night, includes all materials needed. Extra studio time/\$10 a session (no instruction). Students learn hand building, wheel techniques, decorating and glaze methods. Instruction will be according to each individual's abilities. 92 Lower Beaver Creek Rd., Twisp, WA (Jim's studio). 509-429-9475, jimneupert@gmail.com (space is limited).

"The Bluebird Man," film

Sept 5, 7-8:30pm
Methow Conservancy "First Tuesday" Program. Followed by a talk with Ken Bevis. At the Merc Playhouse. 509-996-2870, mary@methowconservancy.org

Pipestone Orchestra Rehearsals Begin for December Holiday Concerts

Thurs, Sept 7, 6:30-8:30 and weekly on Thursdays
At the Methow Valley Community Center, Room 3 in Twisp. Call Matt at 509-997-1022.

Artist to Artist

Sept 9, 5-7pm
Join fellow artists for a casual gathering at the home studios of Joanne Marracci and VBlast. See article. 451 Bally Hill Rd. 509-997-ARTS, www.confluencegallery.com

Reception: Prismatic Optical Phenomena

Sat, Sept 9, 6-10pm; Gallery Talk: Sun, Sept 10, 11am.
See article. At 24 HR Mart, 112 Glover St, Twisp, WA. max@twentyfourhourmart.com, www.facebook.com/pg/24hrmart



(Land and Sky opens at Winthrop Gallery Sept 13 with an Artist Reception on Sat, Sept 16.)

Winthrop Gallery: Land and Sky

Sept 13-Oct 16;
Artist reception
Sat, Sept 16,
5-7pm
A show of art-work by co-op gallery members. See article. At Winthrop Gallery, 237 Riverside Ave, 509.996.3925, www.winthropgallery.com

Fundraiser for Methow At Home with Hank Cramer

Sept 14
Twisp Valley Grange. Twisp, WA.

Plein Aire Painting workshop with Rod Weagant

Sept 15-17
A two-day workshop painting en plein aire at locations in Twisp and Winthrop with master painter Rod Weagant. See article. Confluence Gallery 509-997-2787 www.confluencegallery.com

Artist Reception: Land and Sky

Sat, Sept 16, 5-7pm
See article. At Winthrop Gallery, 237 Riverside Ave, 509.996.3925
www.winthropgallery.com

World Music with Pierre Bensusan

Sat, Sept 16, 7pm
See article. cascadiamusic.org, 509-997-0222
At the Merc Playhouse, Twisp, WA.

Celebrating Cultures

Sept 17, 2-5pm
Clinton Fearon, Juan Barco y Amigos. Free. Pearrygin State Park. Winthrop, WA. 996-2370

Cascadia Rehearsals for December Holiday Chorale

Mon, Sept 18, 7-9pm
At the Methodist Church. Call Dana at 509-322-6249 to join the chorale or ask any questions.



SUN MOUNTAIN LODGE
a resort for all seasons

FEATURING THE GALLERY

Washington's Premier Destination Resort

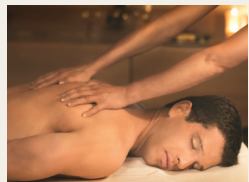
Enjoy stunning panoramic views of the Methow Valley, amazing food and wine, beautiful rooms, fabulous service, soothing spa treatments, and activities for everyone. Plus, experience AAA Four Diamond award-winning fine dining featuring fresh, local, and regional ingredients, and a fabulous wine cellar. Sun Mountain Lodge is perfect for weddings, groups and meetings too!

While you're here, visit **The Gallery**, showcasing the best of local artists. Call the Gift Shop for details at 800-572-0493 or 509-996-2211.

Luxurious Rooms



Spa



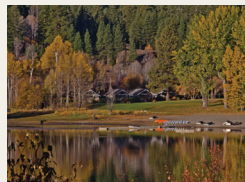
Fine Dining



Romantic Getaway



Fall Beauty



The Gallery



Panoramic Views



604 Patterson Lake Road, Winthrop, WA 98862 | 800.572.0493 | sunmountainlodge.com

North Cascades Bank
Division of Glacier Bank

north cascades bank
www.northcascadesbank.com



Hank's Harvest Foods
We Honestly Care!

Grocery • Deli • Fresh Fish & Meats
Monday-Saturday 7am-9pm • Sunday 8am-8pm
412 Hwy 20, Twisp • 509-997-7711

Brown's Farm



Complete Private Cabins

Jeff & Alicia Brown
887 Wolf Creek Road, Winthrop WA 98862
(509) 996-2571 www.methownet.com/brownsfarm



(Featured artist Danbert Nobacon, ART magazine cover, 2013.)

Do you enjoy receiving a copy of this magazine in your mailbox?
 Please **renew your membership** & continue your subscription.
 Thank you for your support. ___\$35, ___\$50, ___\$100, ___other
 Please mail your check to: METHOW ARTS, PO BOX 723, TWISP, WA 98856

Tool School: Power Tools and Construction Class for Womxn

Sat, Sept 23 & 24, 10-2pm
 Drills & Drivers, Wormdrives & Drywall
 A womxn-only workshop. Find article online at methowarts.org/classes. \$75-250 sliding scale. 24 HR Mart, 112 Glover St, Twisp, WA. max@twentyfourhourmart.com

“True Nature” - The Art and Craft of Field Journaling
 Sat-Sun, Sept 23-24, 10am-4pm
 \$150* plus materials. 509-996-2870, mary@methowconservancy.org

Monthly Movie Night at 24HR Mart
 Sun, Sept 24, 1st Film @ 7pm
 Double Feature the last Sunday of every month. September features high school teen classics. The first movie = family friendly, the second film probably won't be! Bring a chair. \$5/suggested. 24 HR Mart, 112 Glover St, Twisp, WA. max@twentyfourhourmart.com



(Tickets on sale for TAIKOPROJECT, who have performed with Usher, Alicia Keyes, Stevie Wonder and more. SAT, OCT 14. MethowArts.org)

DÜM DUET

Wed, Sept 27, 6:30pm
 Features Turkish style drumming accompanied by Arabic Oud. See article. At Confluence Gallery, 509-997-2787, www.confluencegallery.com

New Works From Kittitas County

Sept 30-Nov 11: Opening reception, Sept 30, 4-8pm
 Gallery One Visual Arts Center presents Best in Show juried works from Kittitas County artists. See article. Confluence Gallery, 509-997-ARTS www.confluencegallery.com

Brian Sostrom “Darkening Light”

Sept 30-Nov 11: Opening reception, Sept 30, 4-8pm
 Atmospheric acrylic paintings inspired by the beauty and emptiness of nature that unfold as a visual poem. See article. 509-997-ARTS www.confluencegallery.com

Tess Jenkins Artist in Residence Exhibit

Sept 30-Nov 11: Opening reception, Sept 30, 4-8pm
 Solo Artist in Residence exhibit. See article. 509-997-ARTS www.confluencegallery.com

OCTOBER

Methow Conservancy Annual Cider Squeeze & Social

Sun, Oct 1, 2-4pm
 At the Sabold Residence, 17 Bean Rd. 509-996-2870, mary@methowconservancy.org

The Last Salmon

Fri, Sat, Oct 6-7, 7pm; Sun, Oct 8, 2pm
 Back by popular demand. See article. \$5-\$18. The Merc Playhouse, 101 S. Glover Street, Twisp, www.mercplayhouse.org. 509-997-7529.

Community Art Activism Workshop

Sat, Oct 7, 10-1pm
 Ages 5 to adult. Michele Koger MA, LMFT, ATR hosts a Mandala Community Weaving workshop designed to build “Unity in Diversity”. Confluence Gallery, Nesting Place Studio, Suite 201. 509-997-ARTS, confluencegallery.com

Tool School: Power Tools and Construction Class for Womxn

Oct 14 & 15, 10am-2pm
 Nail Guns & Table Saws, Joinery & Sanding
 A womxn-only workshop. Find article online at methowarts.org/classes. \$75-250 sliding scale. 24 HR Mart, 112 Glover St, Twisp, WA. max@twentyfourhourmart.com

TAIKOPROJECT

Sat, Oct 14, 7pm
 Winners of the prestigious Tokyo International Taiko Contest, they have performed on the Academy Awards, the Grammy Awards and with Usher, Alicia Keyes, Stevie Wonder and more. See article. \$7-\$25. Online: brownpapertickets.com, Riverside Printing Winthrop, Methow Arts. At the Winthrop Barn. Full bar. info@methowartsalliance.org

Nightmare on Glover Street: Dream Warriors

Sat, Oct 28, 9pm
 Halloween costume contest dance party! Featuring DJ's, a costume contest and dancing until the sun comes up. \$5 Suggested. 24 HR Mart, 112 Glover St, Twisp, WA. max@twentyfourhourmart.com

Monthly Movie Night at 24HR Mart

Sun, Oct 29, 1st Film @ 7pm
 Monthly Double Feature the last Sunday of every month. September features Halloween classics. The first movie will be family friendly, the second film probably won't be! Bring a chair. \$5/suggested. 24 HR Mart, 112 Glover St, Twisp, WA. max@twentyfourhourmart.com

calendar
 continued on next page...

Rocking Horse BAKERY
 Delectable breads, pastries, espresso, teas, soups and sandwiches featuring locally produced ingredients.....all handcrafted daily
 265 Riverside Ave, Winthrop, WA 509-996-4241 **OPEN EVERY DAY**

FIND UPDATES, FULL ARTICLES AND MORE EVENT LISTINGS AT METHOWARTS.ORG

SHADOWLINE DESIGN & CONSTRUCTION, INC.
THE DREAM MAKERS
 DONALD K. MILLER
 509 996 3200
 shadowline@methow.com
 Web Page methow.com/shadowline

BUY ART SUPPORT ARTISTS ART MATTERS

confluencegallery.com Your local non-profit art gallery supporting Okanogan County artists for 30 years.

METHOW SALMON RECOVERY FOUNDATION
 SALMON - PUBLIC ART - EDUCATION - HABITAT - COMMUNITY
 509.429.1232 - www.MethowSalmonRecoveryFoundation.org

PINE NEAR RV PARK
 509.341.4062
 Pull Thru 30/50 amp Sites
 1/2 hour to North Cascades
 Walk to Town • Walk to Nature Trails
 Excellent Cell Service & Satellite Reception
 Coin Laundry & Showers • Free Wi Fi that Works

FALL ART CALENDAR
CONTINUED FROM PAGE 5

EVENTS/CLASSES/EXHIBITS

**METHOW ARTS WELCOMES
CHRIS MOORE TO THE TEAM**

NOVEMBER

Don't Push the River

Sat, Nov 4-Dec 3; Reception & Party: Sat, Nov, 6pm
Artist Talk: Sun, Nov 5 Artist Talk at 11am
New paintings and video work from Seattle artist Graham Downing. 24 HR Mart, 112 Glover St, Twisp, WA. max@twentyfourhourmart.com

Jayne Stone's FOLKLIFE with Moira Smiley

Sat, Nov 11, 7pm
Two-time Juno-winning banjoist, composer and instigator—folk, jazz, bluegrass and Americana. See article. \$7-\$25. Online: brownpapertickets.com, Riverside Printing Winthrop, Methow Arts. At the Winthrop Barn. Full bar. CASH/CHECK only at event. info@methowartsalliance.org

Winthrop Gallery: Holiday Gift Show

Nov, 15-Jan 2: Artist reception Sat, Nov 25, 5-7pm
Crafts and gifts by local and regional artists. See article. At Winthrop Gallery, 237 Riverside Ave, 509.996.3925 www.winthropgallery.com

Vision En Rouge

Nov 18-Jan 6; Opening reception Nov 18, 4-8pm
Confluence Gallery's Holiday exhibit. See article. 509-997-ARTS, www.confluencegallery.com

Dan Brown "Ski Art"

Nov 18-Jan 6; Opening reception Nov 18, 4-8pm
Okanogan artist Dan Brown presents works using snow and water skis recycled into art and furniture. See article. Confluence Gallery and Art Center. 509-997-ARTS www.confluencegallery.com

Christmas at the End of the Road

Fri, Nov 24-Sat, Nov 25
Winthrop, WA.

Artist Reception: Holiday Gift Show

Sat, Nov 25, 5-7pm
Crafts and gifts by local and regional artists. See article. At Winthrop Gallery, 237 Riverside Ave, 509.996.3925 www.winthropgallery.com

Monthly Movie Night at 24HR Mart

Sun, Nov 26, 1st Film @ 7pm
Monthly Double Feature the last Sunday of every month. September features performance arts. The first movie will be family friendly, the second film probably won't be! Bring your own camping chair. \$5/suggested. 24 HR Mart, 112 Glover St, Twisp, WA. max@twentyfourhourmart.com

DECEMBER

Atomic Bombshells Vintage Burlesque

We will sell out! Reserve tickets soon. ADULT ONLY Sat, Dec 2, 7pm
Must be 21 years or older! Tickets online: brownpapertickets.com, Riverside Printing Winthrop, Methow Arts. At the Winthrop Barn. Full bar. CASH/CHECK only at event. info@methowartsalliance.org

Mother Courage

Sat, Dec 2, 7pm.
\$16-\$18/adults, FREE 18 and under. Tickets available online. Limited reserved seating online only. See article. The Merc Playhouse, 101 S. Glover Street, Twisp, www.mercplayhouse.org. 509-997-7529.

Vision En Rouge

Through Jan 6; Opening reception Nov 18, 4-8pm
Confluence Gallery's Holiday exhibit. See article. 509-997-ARTS, www.confluencegallery.com

Winthrop Gallery: Holiday Gift Show

Through Jan 2: Artist reception Sat, Nov 25, 5-7pm
Crafts and gifts by local and regional artists. See article. At Winthrop Gallery, 237 Riverside Ave, 509.996.3925 www.winthropgallery.com

Dan Brown "Ski Art"

Through Jan 6; Opening reception Nov 18, 4-8pm
Okanogan artist Dan Brown presents works using snow and water skis recycled into art and furniture. See article. Confluence Gallery and Art Center. 509-997-ARTS www.confluencegallery.com



(Photo taken at Arts Fest on July 4 by photographer Teri J. Pieper.)

Meet Chris Moore, the newest staff person at Methow Arts Alliance. Chris takes the position of Office and Events Specialist. He will focus on event advertising and sponsorship opportunities and help in implementation of special events. He can also answer questions for you about getting your event listed on our website or acquiring a free artist webpage.

Chris and his fiance moved to the Methow Valley from Chicago last fall. An outdoor enthusiast, Chris was attracted to the beauty of the Valley and the recreational offerings including hiking, kayaking, rafting and biking. Chris was also drawn to the depth of involvement in community offerings. In fact he volunteered at the Merc last spring as Stage Manager for their Children's Theatre Peter Pan.

Chris has a strong background in events and worked in Chicago with CLIF Bar and Company as events coordinator.

Email Chris with any questions about advertising, event sponsorship or event listings on our website at Chris@methowartsalliance.org.



D*SIGNS
CUSTOM SIGNS * ORIGINAL ART * UNIQUE HOME FURNISHINGS

KEYSERSTUDIOS.COM

Custom Signs
D*SIGNS
KEYSERSTUDIOS.COM

109B GLOVER ST N
POB 284
TWISP, WA 98856

509.997.0255 cell
donna.keyser@gmail.com

LOUP LOUP
HWY 20 AT LOUP LOUP PASS ♦ WASHINGTON ♦ 5,250' ELEVATION
SKI BOWL
CORPORATE EVENTS ♦ PARTIES ♦ SKI ♦ SNOWBOARD ♦ X-C ♦ TUBING ♦ FUN!

ESTABLISHED 1958
Quad Chair Lift | Rental Shop
Repairs | Ski School | Tubing Hill
Terrain Park | Snowshoeing
Day Lodge | Restaurant
Doggie Trails | Fat Biking BYOB
Families Welcome | No Lines

WWW.SKITHELOUP.COM
for conditions & pricing
509-997-3405 509-557-3401
conditions info

Operated by Loup Loup Ski Edu. Foundation a 501c3 not-for-profit org. by permit from Okanogan Natl. Forest

Integrated Design Concepts Inc.
A CUSTOM DRAFTING & DESIGN SERVICE
RESIDENTIAL, COMMERCIAL & LIGHT INDUSTRIAL DESIGN

Howard Cherrington
PO Box 681
Twisp, WA 98856
509.997.4865

www.integrateddesignconcepts.com

THE WINE SHED
Downtown Winthrop
130 Riverside Avenue
Find us on Facebook!

WINE BEER SPIRITS TASTINGS



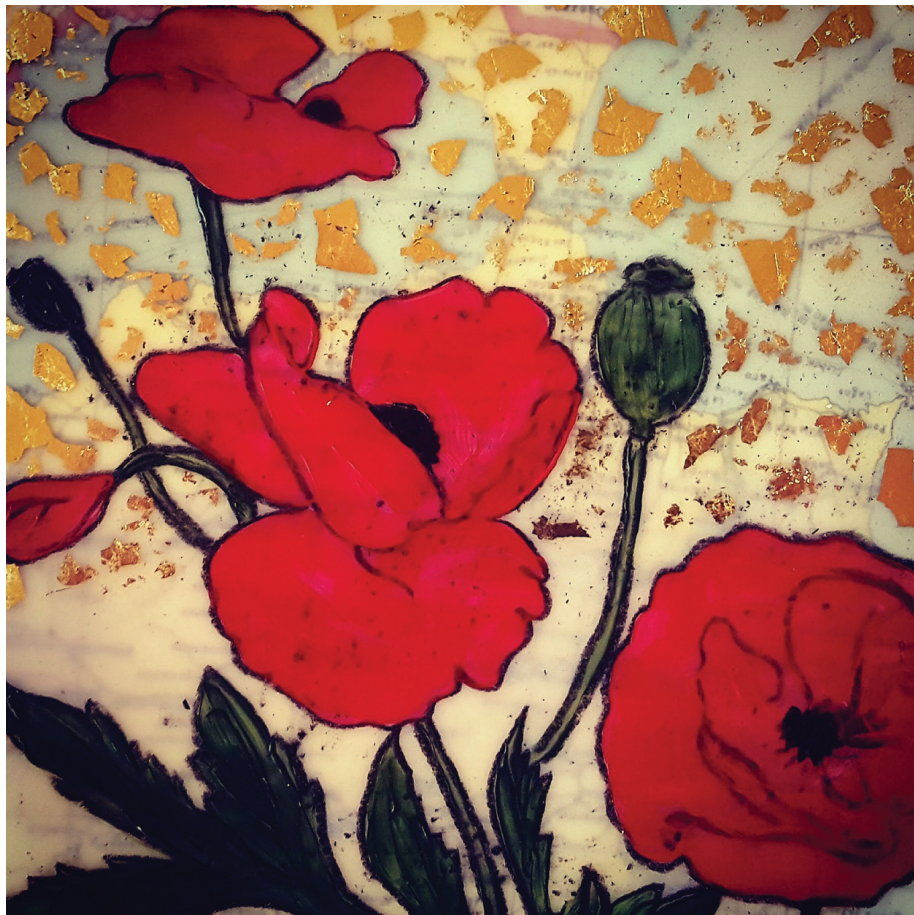
[WINTHROP GALLERY]

HOLIDAY GIFT SHOW

For the best in regional giftware, be sure to visit the Winthrop Gallery's annual Holiday Gift Show. Each year the gallery invites artists and crafters from throughout the region to bring their finest giftware to this show.

DATES: Nov 15-Jan 2. LOCATION/HOURS: The Winthrop Gallery is located at 237 Riverside in downtown Winthrop. Fall Gallery hours: 10am to 5pm, Thursday through Monday. INFO: 509-996-3925, www.winthropgallery.com.

(Artist Patty Yates captures the colorful artistry of the Winthrop Gallery.)



[CONFLUENCE GALLERY]

VISION EN ROUGE

AND

DAN BROWN'S SKI ART

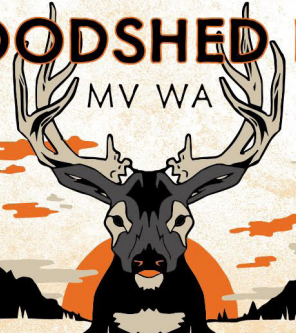
Confluence Gallery's Annual Holiday exhibit "Vision En Rouge" is a multi-media extravaganza featuring works in the powerful, alluring, and vibrantly alive color RED.

In the Community Gallery Okanogan artist Dan Brown presents a solo exhibit title "Ski Art". The exhibit features works using snow and water skis recycled into whimsical and functional art and furniture.

DATES: Nov 18-Jan 6; Opening reception, Nov 18, 4-8pm. LOCATION: Confluence Gallery, 104 Glover St, Twisp. CONTACT: 509-997-ARTS, confluencegallery.com

(Artwork from top left: Salyna Gracie's Vision en Rouge, Dan Brown's Ski Art; Bottom right.)



LEGENDARY CUSTOM APPAREL
WOODSHED INK
 MV WA

www.woodshed.ink bryan@woodshed.ink

Bruce Morrison
www.brucemorrison.com
Carving
 SIGNS • DOORS • MANTELS • ORNAMENTS
 (509) 429-7726 - PO Box 1043 Twisp WA 98856

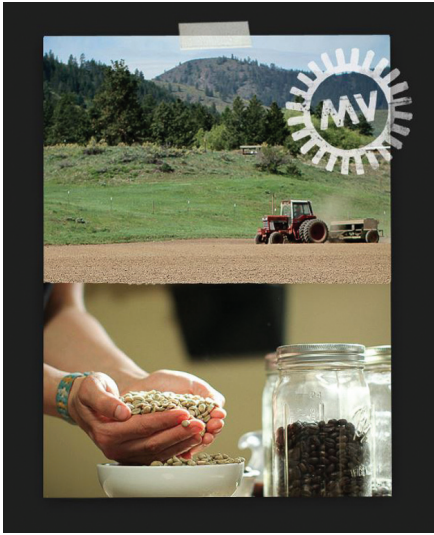



ASPEN GROVE
 HOME. KITCHEN. INSPIRATION.
Winthrop, Wash.
aspengrovehome.com | 156 Riverside Ave. | (509) 996-2009

Cascadia Music
 2017-2018 Season



www.cascadiamusic.org



[TWISPPWORKS]

METHOW MADE

The Methow Valley is home to unique artisanal goods, delicious locally grown and produced food and beverages and products you won't find anywhere else! TwispWorks' Methow Made is a program that gives Methow Valley artists, craftspeople, farmers and food and beverage producers exposure to customers who love the Methow Valley and want to support our local economy.

With almost 40 participants, Methow Made is growing and the website is a great place to find everything from locally grown organic apples to custom built yurts! And by choosing Methow Made you can be sure your money supports the local economy.

Visit www.MethowMade.com for a complete listing of Methow Made artists and producers as well as a list of local retailers where you can purchase Methow Made products.



ARTIST TO ARTIST WITH JOANNE MARRACCI AND VBLAST

Join fellow artists for a free and casual Artist to Artist gathering at the home studios of Joanne Marracci and VBlast in Twisp September 9, 5-7pm. Joanne is a silversmith and VBlast is a multi-media artist working in sculpture and painting.

Confluence gallery presents Artist to Artist as a free quarterly gathering for artists in the working studio of an Okanogan County artist providing an opportunity for the resident artist to share something about themselves and their work. These educational and networking presentations foster creativity, business skills, dialogue and collaboration within the local artist community.

We invite local and visiting artists to join us in an evening of socializing and learning about the craft and business of art! BYOB and a snack to share.

DATE: Sept 9, 5-7pm. LOCATION: At 451 Bally Hill Rd. For Directions, ride share info @ Confluence Gallery 509-997-2787



FALL GATHERING THEME: MANDALA COMMUNITY WEAVING

– UNITY IN DIVERSITY

Join Art Therapist Michele Koger as she hosts a Mandala Community Weaving workshop designed to build "Unity in Diversity" for the Methow Valley community Saturday, October 7th 10am – 1pm.

The Mandala Community Weaving is intended to be an expression of the spirit of the Methow community. From the various colors of the weaving, to the representations of people, to the shapes of woven areas and textures of the weaving, the completed Mandala will be a symbol and celebration of the unity and diversity of our community.

For ages 5 and up. FREE. At Confluence Gallery and Art Center - Nesting Place Studio, Suite 201

DATE: Sat, Oct 7, 10-1pm. LOCATION: Confluence Gallery & Art Center - Nesting Place Studio, Suite 201, Twisp, WA. FREE, for Children 5 years old to Adults. RSVP: michelekoger@gmail.com

The BARNYARD = CINEMA =

Movies & Events ★ Beer & Wine

Movie listings and hours of operation can be
found on our website or by phone

www.thebarnyardcinema.com

509-996-3222



ORGANIC METHOW RADIO

radioroot.com

WORAS WOODWORKING LLC
custom handmade cabinets and furniture

PHIL & SOLOMON WORAS
509-429-9412
woraspc@gmail.com
www.woraswoodworking.com
Lic # WORASWL901BL

CINNAMON TWISP BAKERY

Good Energy
Food for
the whole
Family!

Open 6-3 everyday of the week!
Organic Grains & Flours! Organic Espresso too!

116 N Glover Street Twisp WA 98856 509.997.5030
Free Internet Access!



(Dayton Edmonds performs in *The Last Salmon* at the Merc Playhouse.)

[MERC PLAYHOUSE]

THE LAST SALMON, A CHAMBER MUSICAL

BACK BY POPULAR DEMAND

The Last Salmon, a chamber musical for kids of all ages and the people who love them, uses contemporary music styles such as hip-hop and indie-pop to tell a story that begins with the Native American First Salmon ceremony. Learn about the life cycle of wild salmon by following Buck, Spring, and the rest of their fishy crew from their first explorations of their river home, out into the wide ocean, and home again. On their journey, they deal with many human obstacles. The miracle of their return to the river years later holds both truth and hope for our future as we learn to understand the issues of environmental justice and sustainability from a salmon's viewpoint.

Told in a creative and fun-filled manner, this made-in-the-Methow show is based on the book *The Last Salmon*, by Phil Davis and it is returning to The Merc's stage after a very popular world-premiere in February of 2016. Written and directed by Ki Gottberg with music composed by Casey James, the musical is hopping with tuneful live music and charming characters played by a local cast of performers.

DATES: Oct 6-8. Friday and Saturday, 7pm; Sunday, 2pm. Doors open 30 minutes prior to show time. TICKETS: \$5-\$18. Reserved and general seating available. LOCATION/INFO: The Merc Playhouse, 101 S. Glover Street, Twisp, www.mercplayhouse.org. 509-997-7529.

[WINTHROP GALLERY]

LAND AND SKY

One of the great pleasures of living in a rural area is being able to watch the land's transitions through the seasons. The gold of summer yields to the spectacular colors of fall. Winter brings its many shades of white, in both land and sky. Spring is the miracle of watching the world turn from white to brown and finally to green, seemingly in the blink of an eye.

In this show Winthrop Gallery artists offer artworks that show their awe and appreciation of the ever-changing landscape. From still forests and mountain lakes to sweeping open spaces with a dominating sky, these views, expressed in paintings, drawings, photographs and more show an artist's love for the land and sky that inspires them.

DATES: Sept 13-Oct 16. A reception will be held at the gallery on Saturday September 16, from 5 to 7pm. Refreshments will be served. LOCATION/HOURS: The Winthrop Gallery is located at 237 Riverside in downtown Winthrop. Hours: During September the gallery will be open daily from 10am to 5pm. In October the gallery will be closed on Tuesdays and Wednesdays. INFO: 509-996-3925, www.winthropgallery.com.

(In their Fall show the Winthrop Gallery artists offer artworks that show their awe and appreciation of the ever-changing landscape. Artwork left, *Walk to Dubois Flats* by Michael Caldwell)



RIVER RUN INN & CABINS



On the Methow River in Winthrop WA

800.757.2709

www.Riverrun-Inn.com



Cabins,
Private Rooms,
Vacation Home,
Indoor Pool
and Hut Tub



TICKETS: METHOWARTS.ORG



SUPAMAN - SAT. FEB. 11. 2018



Laura Aspenwall Ouzel Glassworks
227 Wolf Creek Road, Winthrop
(509) 996-3316
www.ouzelglass.com

Hank Cramer : Making History Sing

ARTICLE BY MARCY STAMPER
PHOTOGRAPHY BY MANDI J. DONOHUE

Hank Cramer's sonorous bass voice has certainly changed since he was coached in the third grade by an Italian opera singer, but Cramer's attraction to music has never wavered.

Still, it took some time before Cramer dedicated himself full-time to music. "I'd say my dream was to bag the day job and become a folk singer," he said. So, after decades of juggling weekend singing gigs with work as a copper miner, a career in the Army, and as manager of 911 emergency-communications systems, Cramer has devoted the past 18 years exclusively to music.

With a specialty that blends history of the Western U.S., maritime history, and Irish and Scottish songs, Cramer now spends some 100 days on the road each year, traveling to performances at museums, historic sites, and music festivals. He has recorded 21 CDs of cowboy songs, folk music, Irish and Scottish repertoire, and sea shanties.

Between singing on a Columbia River riverboat and recording sessions in Tacoma, Cramer recently spent

McLean has a particular appreciation for folk music and history. Her father, Ron McLean, was a folksinger, a poet, and a schoolteacher. He founded the Pine Stump Symphony, a well-respected folk-music festival, in the Methow half a century ago.

So McLean knew the landscape when she prodded Cramer to pursue his music. "Your whole future is inside that guitar case – you've never had the courage to try it," Cramer remembers her saying.

"I surrendered first," said Cramer. He moved to the Methow, and he and McLean later got married.

Those first few years were tough. Cramer worked multiple jobs to make ends meet, from helping on horseback rides and doing 911 consulting. "As you're building your career as a musician or a landscape painter in the Methow, you may have to take the morning shift at Pardoners Mini Market and plow driveways in the winter," he said.

A VOICE THAT CARRIES

Cramer credits his ability to project his voice so it fills a room – or the larger outdoor spaces where he often sings – to the instruction he got in the third grade at Catholic school in upstate New York. Salvatore



Today, Cramer achieves the same effect through his inflection and delivery. He's a natural storyteller, with a casual, disarming sense of humor. When he sings, that conversational intimacy comes through loud and clear.

"The whole show is an experience for the audience. There are jokes and poignant stories," he said. "From the time you step on stage, you have to own the stage and connect with the audience."

Cramer, who has a degree in education with a specialty in history, has never taught in a standard classroom. He had never thought about teaching through music until he was hired by Elderhostel (now Road Scholar) to teach a unit on Pacific Northwest history for a group at Sun Mountain. It turns out a lot of the participants in their educational vacations found their history teachers knowledgeable but uninspiring, said Cramer.

Cramer already had a repertoire of songs about the Oregon Trail, maritime history, and cowboy lore, which he recast as a curriculum in Northwest history. He's

been teaching it twice a year for Road Scholar at Sun Mountain for the past two decades.

Soon museums and historical organizations began hiring him to present similar programs. Cramer's in his 18th season doing living-history presentations along the Oregon Trail, where he dresses as an immigrant, complete with a replica of a small guitar from the 1840s. In San Francisco, Cramer performs in sailing clothes, and he does a regular stint on Lady Washington, a replica of a tall ship from 1787.

"Mixing music and history is kind of uniquely mine," said Cramer. He lets the audience control the pace. "I do history until they get doughnut-faced and get a glazed expression, and then I switch to a song," he said.

He's struck a good balance. People say, "If I'd have had you as my high school history teacher, I'd have really enjoyed it," said Cramer.

Cramer draws material from old folk and cowboy songs, although he writes some of his own material. "With folk songs, generally the melodies are older than the words – melodies can be 400 years old," he said. "In this genre, it's a good thing if it sounds like it's 50 years old

before the ink is dry," he said.

And part of what makes his approach successful is that songs from that era use people's own words to tell their stories, said Cramer.

Cramer takes advantage of the tens of thousands of miles he spends on the road each year to learn new material. He prefers to learn music by ear, in the true folk tradition. "By listening, I understand that the art of a good song is really enhanced poetry," he said.

"I call it listening at the top of my lungs," he said. Once in his motel room, he works out the chords on the guitar – he has nine guitars for different types of music, and also plays banjo.



Cramer also performs around the state through Humanities Washington. In fact, he's made it his mission to bring his music and history shows to out-of-the-way places that rarely hear traveling performers. In 2011, he received the Humanities Washington Award in 2011, presented to one performer each year for excellence in the humanities.

LONG HISTORY IN MUSIC

Cramer was surrounded by music when he was growing up. His grandmother, who came to the U.S. from Ireland when she was 6 years old, took him to his first concert of Irish songs, a performance by the Clancy Brothers. Cramer wasn't enthusiastic. He was an 8-year-old boy, into Buddy Holly and Elvis Presley. "I didn't want to listen to my grandmother's music," he said.

But he was transfixed. "I'd never seen anything like it before – the energy level leaped off the stage," said Cramer. "I decided that's what I wanted to do when I grew up."

Cramer's experiences in the military also inform his performances. He comes from a long military tradition, following his great-grandfather, grandfather, and father in serving in the U.S. Army. Cramer's father was the first U.S. soldier to be killed in Vietnam, back in 1957, when Hank was just 4 years old.

Cramer spent 14 years in the Army, specializing in communications, and then put in another 14 years in the Army reserve. After leaving the Army, he ran civilian emergency-dispatch operations and headed up the 911 program in Washington.

Among all Cramer's musical accomplishments, the biggest honor – although one of the hardest things he does – is singing at the Vietnam Veterans Memorial in Washington, DC, for Veterans Day, Memorial Day and Fathers' Day ceremonies.

Captain Cramer's name was added to the wall on Veterans' Day of 1983, one year after the monument was first dedicated. Now Hank is asked to help when they read all the names on the memorial. The next reading is this Veterans' Day. It takes four days to read the more than 58,000 names, he said.

PAYING IT FORWARD

Cramer is continuing to expand his role in the music world by promoting younger musicians through his Ferryboat Music label. So far, he's produced two albums of traditional Irish and Scottish songs for Brian Maskew, a British musician who lives in the Methow; an album for Carter Junction, a young couple from Spokane; and the first album for his son, Hank Cramer IV.

"I provide advice, but the artist isn't obligated to listen to me," said Cramer, who admitted he didn't know what he was doing when he first produced his own albums.



"I'm nearing the end of my career," said Cramer. "If I can take the things I've learned in all these years and help other people progress without trial and error, that's my new mission. Then I'm pretty happy."

WHERE YOU CAN HEAR HANK:

Sept 1: Natl Historic Oregon Trail Interp Ctr, Baker City, OR

Sept 2: Tumbleweed Festival, Richland, WA

Sept 7: Cowboy Chuckwagon Dinner, Sun Mountain Lodge

Sept 14: Fundraiser for Methow at Home, Twisp River Grange

Sept 16: Cowboy Chuckwagon Dinner, Sun Mountain lodge

Sept 21: Spokane Veterans' Forum

Sept 30: Cowboy Chuckwagon Dinner, Sun Mountain Lodge

Oct 2-4: NW History Story & Song, Road Scholars, Sun Mountain Lodge

Oct 7-8: Sharlot Hall Museum, Prescott, AZ

Oct 24-29: Celtic Music Festival, Ocean Shores, WA

Nov 1: Shriners Musical Salute to Veterans, Spokane, WA

Nov 7: 35th Anniversary "Reading Of The Names", Vietnam Veterans Memorial, Washington DC

Nov 11-12: Spokane Fall Folk Festival

Nov 25: Seattle Folklore Society

Dec 9: Canon Rose Acoustic Society, Canon City, CO

READ ARTICLE ONLINE:
www.methowarts.org/featuredartist/hank-cramer



Baccaloni, an Italian opera singer, lived in the area and was eager to share his skills with the students.

Baccaloni taught them to breathe properly, to sing with their mouth open, and to aim for a spot on the back wall, said Cramer. Fifty years later, his voice carries so well that people sometimes ask if he's wearing a hidden microphone, he said.

about 24 hours at his home outside Winthrop. He also played his long-standing gig singing for covered-wagon dinner rides at Sun Mountain Lodge.

Cramer credits the Sun Mountain job as a turning point in his music career. While singing cowboy songs at a dinner ride in 1998, Cramer met Kit McLean, a Methow Valley native and wrangler, who led the rides.

BE BRILLIANT—DRINK COFFEE

HANDCRAFTED COFFEE FOR COFFEE LOVERS

Always Good!

BLUE STAR
COFFEE ROASTERS

BLUESTARCOFFEEROASTERS.COM

METHOW ARTS PRESENTS

ATOMIC BOMBSHELLS

vintage burlesque

THIS IS AN ADULT ONLY SHOW.

SHAKE AND SHIMMY!

WE EXPECT TO SELL OUT. RESERVE NOW!

Melt away the cold winter blues with the sizzling moves of the Atomic Bombshells, Seattle's internationally celebrated, polished and perfectly-choreographed, professional burlesque troupe, as they present a show that celebrates the feminine form with good humor and style. This is no send-up; this is the real thing! And is sure to sell out!

Originally hailing from the sultry swamps of New Orleans, The Atomic Bombshells have taken the international burlesque scene by storm. As original members of the illustrious Shim Sham Revue in the historic French Quarter, these ladies were taught their bumps n' grinds by the original stars of burlesque's Golden Age. Now the girls bring a little Southern sizzle to the Pacific Northwest and abroad with their inspired combination of vintage Bourbon St. striptease, show-stopping choreography, and MGM-era glamour.



The Atomic Bombshells Vintage Burlesque

SAT. DEC 2. 7PM
ADULT ONLY!

HOSTED BY MISS EXOTIC WORLD
Miss Indigo Blue

TICKETS AND INFORMATION

DATE: Sat, Dec 2. Happy Hour begins at 6:15pm with luscious cocktails, beer and wine. Show starts at 7pm. TICKETS: \$45/GOLD Premium seats (The best seating in the house! Reserved in first 5 rows with special treats and glam.) \$35/SILVER Reserved seating – assigned by purchase date. **Requests and group seating accommodated if you email us.** \$40/at door – while supplies last. We expect to sell out. Tickets can be purchased online at AtomicBombshellsWinthrop. BrownPaperTickets.com, and at Methow Arts in Twisp. info@methowartsalliance.org



PLEIN AIRE PAINTING WORKSHOP WITH ROD WEAGANT

Join Master painter Rod Weagant for a two-day workshop painting en plein aire at on-site locations in the Methow Valley.

Rod Weagant will teach strategies for viewing the world with a painter's eye and how to meet the challenges of painting in the open air. Demonstrations will be in oil paint, but, students may use any medium. All levels welcome. The workshop begins Friday, September 15 at 7pm with a plein aire slideshow presentation and a discussion of workshop goals and on-site painting locations at Confluence Gallery. Saturday and Sunday will be full days painting in the field 9-5pm with a break for lunch. Artists are encouraged to bring a brown bag lunch and dress for the weather.

Rod Weagant makes his home in Methow Valley and has traveled the Yukon, Alaska, and the western U.S. painting and conducting workshops in plein aire painting for over 25 years. He has had over 45 one-man exhibitions and has participated in numerous group shows, including 3 museum shows benefiting The Nature Conservancy.

DATES: Sept 15-17. LOCATION: Confluence Gallery and on-site locations in the Methow Valley. COST: \$200/student. REGISTER: 509-997-2787. salyna@confluencegallery.com

ENJOY MAKING
A LITTLE BIT OF EVERYTHING GOOD.

50 LOST RIVER ROAD • OPEN DAILY 7AM-6PM • 509.996.2855
THEMAZAMASTORE.COM

WINTHROP, WA
OLD SCHOOLHOUSE BREWERY

TAPROOM
NOW OPEN AT
TWISPPWORKS!
21+ OPEN WED-SAT

502 S. Glover St, Twisp, WA
(509) 997-0902 - oldschoolhousebrewery.com

YARDFOOD

YARDFOOD
plant shop

509 997 0978 Methow Valley Hwy E, Twisp

RIVERSIDE PRINTING + design

Wide format printing Business Cards
Posters Postcards
Brochures Laminating
and more!

email projects to:
riversideprinting@methownet.com

173 Riverside Ave #5, Winthrop
509.996.3816

[DOOR NO. 3 PRINT STUDIO]

PRINT COLLABORATION RAISES AWARENESS FOR LOCAL ENVIRONMENTAL CAUSE

This summer Door No. 3 Print Studio and paper cut artist Hannah Viano teamed up to produce a limited edition print for the Methow Headwaters Campaign. This project spearheaded by Methow Headwaters is part of a larger effort to raise awareness to the environmental threat of a large-scale copper mine potentially located at the headwaters of the Methow River.

Paper cut artist Hannah Viano (hannahviano.com) created the image for the campaign poster, generously donating the artwork's use for the project. Hannah's work draws from a strong sense of place and appreciation for the natural world. The importance of clean water to a healthy ecosystem compelled her to support the campaign and its mission.

The limited edition prints were made at Door No. 3 Print Studio in Twisp, printed on the studio's 1911 Chandler & Price letterpress. Printers Robin Doggett and Laura Gunnip hope the prints will remind people of the land and waterways that make the Methow Valley a place worth protecting.

Visit methowheadwaters.org to pledge your support, learn more about the campaign, or request information about purchasing a print.

Learn more about Door No. 3 Print Studio. Visit them on the TwispWorks campus or visit them @ www.doorno3.com



[CONFLUENCE GALLERY]

DUM DUET– A TURKISH RHYTHM CELEBRATION!

Join the Confluence Gallery for an intimate World Music concert with Raquy Danziger and Michael Burdi of DUM DUET Wednesday, September 27.

All the way from Istanbul, this electrifying show features Turkish style darbuka drumming and melodic compositions on the Persian Kemenche accompanied by Arabic Oud exploring rhythms from Turkey, Egypt, Iran and India as well as funk, samba and hip hop beats. A treat for the eyes and ears.

DATES: Wed, Sept 27. Doors open 6pm; showtime 6:30pm. LOCATION: Confluence Gallery, 104 Glover St, Twisp. TICKETS: \$15. Advance Tickets at Confluence Gallery and at the door. CONTACT: 509-997-ARTS, confluencegallery.com




Swanson Woodcraft
Cabinetry & Custom Furniture
Rick Swanson 509.996.2297
rick@swansonwoodcraft.com
www.swansonwoodcraft.com




KIWANIS INTERNATIONAL
SERVING THE CHILDREN OF THE WORLD®
WINTHROP KIWANIS



LIVE MOUNTAIN STUDIOS
recording mixing mastering
www.livemtstudios.com
509 207 9009
winthrop wa



Rendezvous Huts
rendezvoushuts.com
509 996 8100
Operating under a special-use permit in the Okanogan-Wenatchee National Forest



winthrop mountain sports
OPEN DAILY!
Supporting the fine art of winter recreation!
509.996.2886
257 Riverside
Winthrop, WA 98862
www.winthropmountainsports.com

CASCADIA CHORALE AND PIPESTONE ORCHESTRA BEGIN REHEARSALS

The Cascadia Chorale and the Pipestone Orchestra will begin rehearsing for the December 12th and 13th Holiday Concerts. These are two opportunities to engage with Cascadia this fall. The first is participation in the popular choir. Choir rehearsals will commence Monday, September 18 at the United Methodist Church from 7-9pm. All singers are encouraged to attend the rehearsals under the direction of Dana Stromberger as the Chorale prepares a program of featuring music from Handel's Messiah, favorites carols and even some jazzy holiday tunes.

Matt Armbrust is beginning his second year as conductor of the Pipestone Orchestra. The multi-generational group performs exciting repertoire from the Baroque through Modern periods. Even if you haven't played for years, dust off your instrument and join us.

DATES: Choir rehearsals start Mon, Sept 18, 7-9pm at the Methodist Church. Pipestone Orchestra rehearsals begin on September 7th and continue weekly on Thursdays from 6:30-8:30pm at the Methow Valley Community Center, Room 3 in Twisp. CONTACT: For the choir Call Dana at 509-322-6249 to join the chorale or ask any questions. For Pipestone Orchestra, call Matt at 509-997-1022.



THE BARNYARD CINEMA

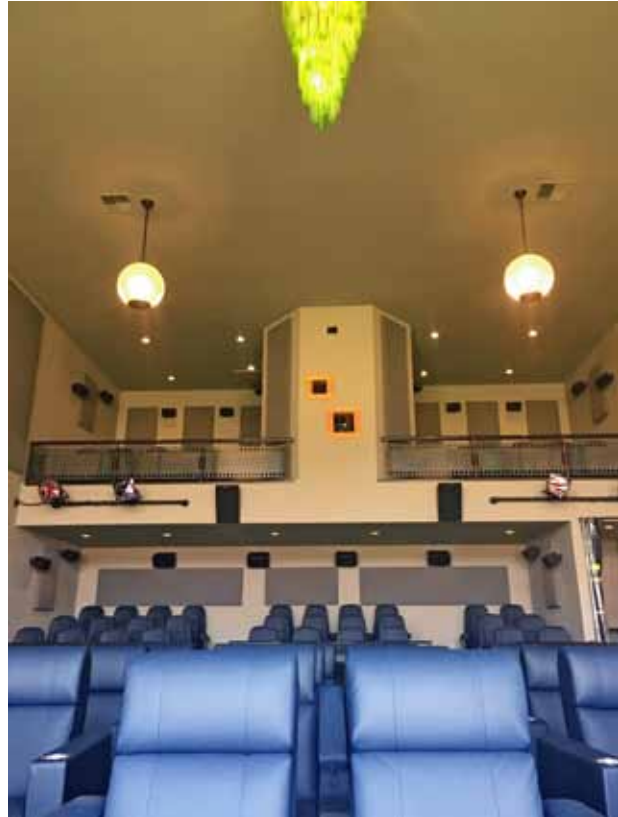
BRINGS BIG SCREEN TO THE METHOW VALLEY

Labor Day weekend brings the magic of the silver screen to the Methow Valley with the Barnyard Cinema's grand opening. It's not a question of Methow Valley residents not having access to films; after all, with TVs, DVD players, laptops, desktops, and phones, most households have at least one way to watch movies.

But watching a film on a big screen surrounded by other residents is a vastly different from viewing it at home, curled up alone on one end of the couch. Watching a movie in a theater with a big screen and a high-tech sound system not only gives audiences a bigger, more vibrant visual and auditory experience, but it also brings people together. Sharing the film-watching experience, we laugh together, cringe at the same moments, cover our eyes as if on cue, and shed tears in unison. We gather in the lobby before a show to catch up with friends and neighbors, we reconvene after a movie to dissect and critique it, seeking a deeper understanding not only of the film, but of each other. And that's the experience that the six Barnyard Cinema partners are aiming to deliver: a chance to celebrate the excitement, intrigue, and beauty of movies in a communal environment.

With comfortable theater seating for about 75, the Barnyard Cinema offers an intimate setting for watching a wide range of films. Family pictures, classic films, documentaries, foreign films, and cult flicks—all have a place at the Barnyard Cinema, which is open to the public. Eventually, the Barnyard Cinema partners hope to present music events, comedy shows, and improv nights as well. Add local brews and wines from Old Schoolhouse Brewery and Lost River Winery along with Blue Star espresso, candy, and popcorn, and you've got the classy version of a quintessential movie theater experience.

Many great American small towns have several things in common—an independent bookstore, strong schools, a tight community, a spirit of ingenuity and creativity, and a small movie theater. With the opening of the Barnyard Cinema, the Methow Valley has been given its final component of this equation.



LOCATION: The Barnyard Cinema, Hwy 20, Winthrop. INFORMATION: www.TheBarnyardCinema.com and online at methowarts.org/events

Cascade Pipe & Feed Supply INC

We've got the supplies for your Spring garden projects!

Soil Amendments & Potting Soils
Irrigation • Fencing Materials

ORGANIC OPTIONS We're more than just a pipe store. **STIHL** SALES • SERVICE • PARTS

Monday - Saturday 8am - 5:30pm
Hwy 20 across from Hank's 997-0720

Letterpress Printing

for your special occasion or business

3 Door No. 3 Print Studio

509-449-1081
info@doorno3.com
doorno3.com

HealthMart PHARMACY

Ulrich's VALLEY PHARMACY

423 E. Methow Valley Hwy, Twisp
509-997-2191

Tires LES SCHWAB

Car Tires • Brakes • Wheels • Batteries • Shocks

216 S. METHOW VALLEY HWY, TWISP
509-997-2026

MELBOURNE INSURANCE AGENCY, INC

Twisp, Wa. Winthrop, Wa.

www.melbournagency.net
(509) 997-5291 or (509) 996-4515

SAWTOOTH DENTAL CARE

John T. O'Keefe, III, D.D.S.

115 S. Glover St. Twisp, WA 509.997.7533
www.sawtoothdentalcare.com

Poppie Jo Galleria

BOUTIQUE, CLOTHING, ANTIQUES

117 W 2nd Ave
Twisp, WA 98856
(509) 997-0416

www.mazamacountryinn.com

Reservations: **800.843.7951** **MAZAMA COUNTRY INN**



[TWISPPWORKS]

FOXTAIL POTTERY – MANDY SHOGER

Mandy Shoger is new to the Methow Valley. A longtime fan of the North Cascades, Mandy has been dreaming about moving to the area for years and has finally moved her ceramics practice, Foxtail Pottery, to TwispWorks.

Mandy originally earned a BFA in 2001 with a focus in oil painting, but was lured by the meditative qualities of clay work soon after graduating college. She has been growing her functional ceramics business in Seattle for several years, and enjoys working with clients near and far to create dinnerware that they can use every day. Her work is carried in several shops and galleries across the country and online at www.foxtailpottery.com.

She enjoys straddling the design line between modern and rustic, using bold patterns inspired by architecture and textiles from around the world. Mandy is excited that this new opportunity will give her more space to grow and evolve, and draw from the natural beauty of the people and landscapes found in the valley. Be sure to stop by her studio in building number 9 and say hello!

CONTACT/INFO: foxtailpottery@gmail.com, www.foxtailpottery.com

CASCADIA MUSIC LAUNCHES STELLAR CONCERT SEASON

Cascadia Music commences its 2017-2018 star studded season with award winning guitarist **PIERRE BENSUSAN** at the Merc Playhouse on September 16, 2017. Born in Oran, French-Algeria, Pierre Bensusan's family moved to Paris when he was 4. He began formal studies on piano at the age of 7 and at 11 taught himself guitar. Influenced in those early days by the folk revival blooming in Britain, France and North America, Bensusan began first to explore his own diverse musical heritage and then moved to the horizons beyond. At 17 he signed his first recording contract, and one year later his first album "Pres de Paris" won the Grand Prix du Disque upon his debut at the Montreux Festival in Switzerland. Winner of the Independent Music Award, in the Live Performance Album category for his live album "Encore", and "Best World Music Guitar Player" by the readers of Guitar Player Magazine, Pierre Bensusan is recognized as one of the premier musicians of our time.

KAIROS will perform November 3, at the Merc Playhouse. Formerly known as the Kairos Quartet, the group has undergone some changes recently, and for this concert they will appear as a piano trio. Founding members violinist Carrie Rekhopf and cellist John Michel will be joined by pianist Peter Longworth in a performance of Mendelssohn's Piano Trio in d minor as well as other selections.

THE CASCADIA CHORALE AND PIPESTONE ORCHESTRA give their annual Holiday Concert at the Methow Valley Community Center December 12th and 13th. Chorale director Dana Stromberger and Orchestra director Matt Armbrust combine their talents to present an enchanting evening of holiday cheer and community togetherness. This year's program will include selections from Handel's Messiah, old familiar carols and jazzy renditions of popular favorites.

PIANIST STEPHEN BEUS will return to the valley on March 10 to perform a solo recital. "Mesmerizing... explosive... intelligent... he belongs on the world stage" (Salt Lake Tribune). In the space of four months, American pianist Stephen Beus won first prize in the Gina Bachauer International Piano Competition, first place in the Vendome Prize International Competition (Lisbon) and he was awarded the Max I. Allen Fellowship of the American Pianists Association (Indianapolis).

Find more Cascadia events online at methowarts.org/events TICKETS AND INFO: www.cascadiamusic.org or call 509-997-0222.



Experience winter in the heart of the magnificent Methow Valley

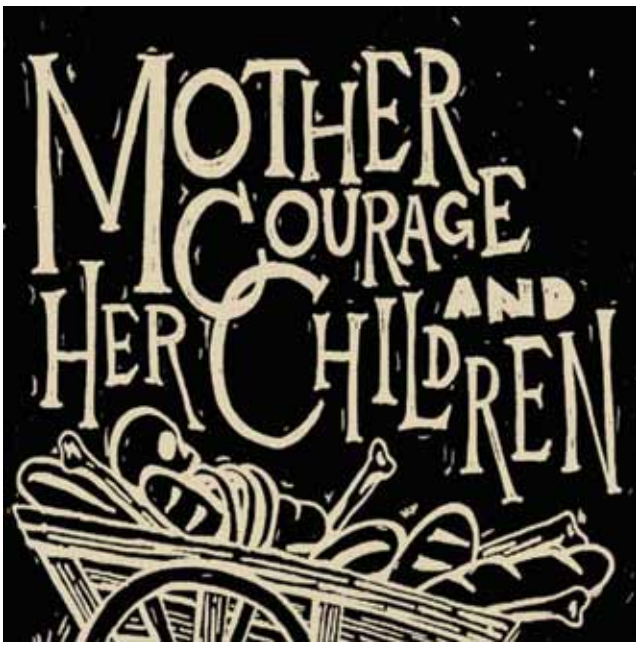
NORDIC SKIING • ALPINE SKIING • SNOWSHOEING • SNOWMOBILING • FAT BIKING • ICE SKATING & HOCKEY

- Winter the way it's supposed to be!
- Ski the nation's largest cross-country ski trail system from downtown Winthrop! Over 120 miles of world-class groomed trails right out your door will take you through spectacular winter scenery. You'll find great lodging, superb dining, lively pubs, music, galleries and shops, all here in this remarkable place.

Take a break from the ordinary. COME TO WINTHROP.

Winthrop
WASHINGTON

.....
WinthropWashington.com



[ARTS AT SEATTLE U & THE MERC PLAYHOUSE]

MOTHER COURAGE

For the fifth year in a row, The Merc Playhouse is pleased to present another touring production from Seattle University's Performing Arts & Arts Leadership Department. Mother Courage, by Bertold Brecht, is considered one of the greatest anti-war plays ever written, set in wartime while a fierce, indomitable woman fights to make a living and keep her family alive. With one son who is too daring, one son who is too honest, and a daughter who stays mute, Mother Courage chases profit and does whatever it takes to survive the nightmare of war.

Brecht's masterpiece is funny, sad, and unrelenting as it scrutinizes the impact of war on ordinary people. Featuring Ki Gottberg, the Merc's outgoing Artistic Director in the titular role, guest artist, Andrew Litzky, artistic director of Theatre Simple, as the Cook, and a cast of Theatre students from Seattle U, this evening is sure to sell out, as did last year's tour of The Tempest. Get your tickets early!

DATES: Sat, Dec 2, 7pm. Doors open 30 minutes prior to show time. TICKETS: \$16-\$18/adults, FREE general admission for students 18 and under. Tickets available online. Limited reserved seating online only. LOCATION/ INFO: The Merc Playhouse, 101 S. Glover Street, Twisp, www.mercplayhouse.org. 509-997-7529.

GATHER AT TWISPPWORKS



Not only is TwispWorks a great place to explore and shop for unique local art and goods, it's also a great place to hold your next gathering! Whether you are looking for the perfect spot for your next workshop, board meeting or family reunion, TwispWorks offers an assortment of event spaces.

From birthday parties to art classes to community meetings the Education Station is a great place for your next gathering. The Education Station comfortably seats 40 and has easy access to a kitchen, front and back decks and projector and screen.



The Gateway Conference Room is ideal for your next committee or board meeting. The room easily seats 12-16 around a large board table and a projector and screen are available for use.

Looking to gather outdoors? TwispWorks offers a number of outdoor spaces and amenities for your next picnic, performance or wedding rehearsal including the 14,000 square foot Plaza@TwispWorks.



(TwispWorks offers many places that are ideal for a gathering. Photos of Education Station - top left, the Gateway Conference Room, bottom left and the Plaza at TwispWorks.)

INFO: Reservations and details are available on the TwispWorks website or by calling their office: 509-997-3300 extension 1.

Holiday Open Studio

Paula Christen Watercolors
447 Wister in Winthrop

Nov. 24 & 25 10 am - 5 pm
Refreshments
Free print raffle

www.paulachristen.com

Art That Kicks Butt

Ginger Reddington
H: 509.997.2721
C: 509.995.2471
www.gingerreddington.com

REFLECTED LIGHT PHOTOGRAPHY

WEDDINGS - DOGS - FINE ART

Teri J Pieper
509.630.6224
www.teripieper.com
teri@teripieper.com

TACKMAN SURVEYING PLLC

119 Glover Street in Twisp
509.996.3409

tackmansurveying.com



[CONFLUENCE GALLERY]

SEPTEMBER AT CONFLUENCE

WALKING THE WILD EDGE explores the beauty of wild nature and the tension of human-wild interaction at the edges of wildness. A portion of profits from the show will benefit the Methow Conservancy and the important work they do conserving our wild places in the Methow Valley.

NEW WORKS FROM KITTITAS COUNTY:

Gallery One Visual Arts Center Presents Best in Show Juried Works from Kittitas County Artists

Curated by Executive Director Monica Miller and Exhibits Coordinator Renee Adams of Gallery One Visual Arts Center, this exhibit features new works of selected artists from the past 10 years of the Kittitas County Juried Show "Best in Show" winners. The collection showcases the some of the breadth and diversity of artists in the area, as well as, the wide range of contemporary art being produced. From sculptural works to digital manipulations, it shakes up the notion that central Washington is just for cowboys.

SEATTLE ARTIST STEPHANIE HARGRAVE'S B I O T A

Hargrave's encaustic paintings are inspired by botany, biology and abstract organic imagery. Her paintings incorporate a tendency to abstract organic forms, and in doing so, emphasize the direct correlation between subject matter and materials, as pure bee's wax, resin and pigments are heated, layered and fused.

BRIAN SOSTROM PRESENTS "DARKENING LIGHT"

Sostrom's atmospheric acrylic paintings are heavily inspired by the beauty and emptiness of nature here in the Pacific Northwest. The images are not intended to communicate a specific story, but, rather to create an intriguing visual poem. Brian combines traditional techniques with unusual materials, using open acrylic paint on a smooth transparent surface. Lighting and atmosphere are at the very heart of his work and to create the brightest glow he finds himself "darkening the light."

ARTIST IN RESIDENCE TESSA JENKINS will present her residency exhibit in the Confluence Gallery gift shop.

DATES: Sept 30-Nov 11; Opening receptions, Sept 30, 4-8pm. LOCATION: Confluence Gallery and Art Center, 104 Glover St, Twisp, WA. CONTACT: Salyna Gracie, 509-997-ARTS, www.confluencegallery.com



(Artwork clockwise from Top left: Jane Orleman, Stephanie Hargrave, Amass (30x24), Brian Sostrom, Heavy Morning, Tess Jenkins.)



YOUR HOME AWAY FROM HOME THIS FALL

- ★ riverfront luxury suites
- ★ full kitchens, fireplaces & deep soaker tubs
- ★ private screened porches
- ★ riverside fire pit & hammock
- ★ free wifi
- ★ live music on weekends

Separate pet friendly suites available!

breakfast included, smiles guaranteed

855.784.8328 • 140 W. Twisp Ave. • TwispRiverSuites.com



THE FLOYD COMPANY

**TAXES
TECHNOLOGY
INVESTMENTS**

(509) 997.3262 | www.TFCHQ.COM

Securities offered through KMS Financial Services, Inc., a registered broker-dealer, Member FINRA, SIPC

eqpd | TAKE HOME YOUR **LAST BAG** | MADE IN TWISP, WA



THE LAST BAG
REUSABLE FOR A LIFETIME

Visit us on the TwispWorks campus to shop our full line of bags and experience how eqpd is rebuilding American manufacturing.
502 South Glover St. • Twisp, WA • 509-997-2010 • open m-s 10-4



eqpdgear.com

CHAMBER MUSIC FESTIVAL GLORIOUS MUSIC, WITH A TOUCH OF THE UNEXPECTED



(This summer's Methow Valley Chamber Music Festival was marked by the innovation and diversity that have become hallmarks of the 22-year-old festival. Photo by Marcy Stamper.)

This summer's Methow Valley Chamber Music Festival was marked by the innovation and diversity that have become hallmarks of the 22-year-old festival.

Audiences were introduced to an ancient Chinese wind instrument, the sheng, and heard music by unfamiliar composers, including a frenetically virtuosic piece for cello and piano by 20th-century Russian composer Alfred Schnittke that was described as a crazed version of "Flight of the Bumblebee." A quartet by Osvaldo Golijov, a contemporary composer inspired by his roots in Argentinean tangos and Jewish klezmer music, was particularly well received.

And there was music for cello quartet, including an arrangement of "Bohemian Rhapsody" by the '70s progressive-rock group Queen. Then there was the comedic—but musically faithful—adaptation of Ravel's "Bolero" played by four cellists... on a single cello.

Including some entertaining feats doesn't mean the Methow Chamber Music Festival isn't a place for serious music—quite the contrary. It is instead proof that if you're good enough, you can make exquisite music out of anything.

And the festival musicians—a mix of well-loved veterans and exciting players new to the festival—delivered moving and impeccable performances of Beethoven, Haydn, and Brahms, all part of a balanced and engaging programs selected by Artistic Director Kevin Krentz.

In addition to five Centerstage concerts—several with sold-out crowds—people enjoyed free concerts by the talented Fellowship Quartet in relaxed settings from Mazama to Twisp.

Music lovers don't have to wait for next summer to hear excellent chamber music. Look for the festival's annual Valentine concert on Saturday, February 17, 2018, at the Merc Playhouse. For more information about the Methow Valley Chamber Music Festival, www.methowmusicfestival.org



SPECIAL TOURING EXHIBIT: ARTISTS OF THE OKANOGAN WHERE ART AND NATURE COME TOGETHER

Confluence Gallery presents Artists of the Okanogan: Where Art and Nature Come Together, new works by 28 Okanogan County artists at Gallery One Visual Arts Center September 1 – 30 with an Opening Reception September 1, 5 – 8pm.

At Gallery One Visual Arts Center in 104 Pearl St. Ellensburg, WA

(Tom Reichert, Sunrise Blackbird.)

EXERCISE *your* CREATIVITY

METHOW CYCLE & SPORT
WINTHROP, WA

THE VALLEY'S ONE-STOP SHOP FOR CYCLING, SUP'S, TRAIL INFO, NUTRITION AND MORE

SALES • SERVICE • REPAIR • GEAR • MORE

29 HWY 20 • WINTHROP, WA 509.996.3645
METHOWCYCLESPO.COM OPEN DAILY

Winthrop GALLERY
www.WINTHROPGALLERY.COM
PO BOX 272 WINTHROP WA 98862 (509) 996-3925

Alpine DESIGNS 2009, Inc.

Quality Cabinetry
and more.....

Marc Robertson Office 509/996-3771
alpinedesigns@methownet.com Mobile 509/669-0777

- Mobile Showroom
- Personalized Services
- Computerized Kitchen Design
- Corian & Granite Countertops
- Wholesale Appliances

**Your community.
Your news.**

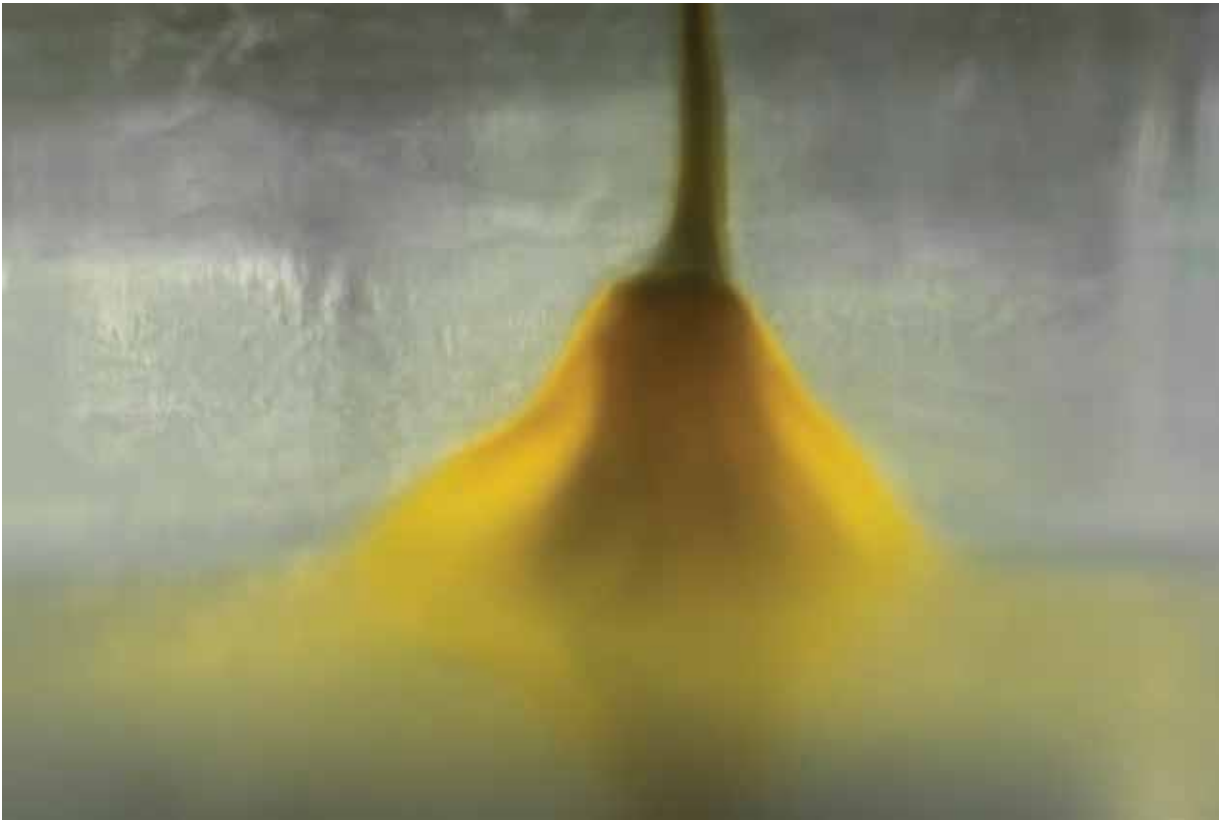
Methow Valley News
Bringing you news of the Methow Valley since 1903.

Find us in print & online
www.methowvalleynews.com

The Merc Playhouse
Connects curious seekers through live theater.

Year-round live theatre, inspiring rental space, plus theatre education for children

509-997-7529 mercplayhouse.org info@mercplayhouse.org



(Frozen - From the Dangers of Flowers Series, by Sherry Malotte.)

[TWISPPWORKS]

METHOW PHOTO ARTS SHERRY MALOTTE

Sherry Malotte is a photographer and artist who finds magic in working with animals, nature, abstract imagery and architecture. She often mixes media by adding pastels, pencil, wax or paint to her prints but there is always a photographic element. Sherry employs slow shutter speed and movement techniques to make bold, colorful, abstract images that evoke wonder and curiosity.

When asked about her choice of medium Sherry explains, "I rarely find the right words to describe why photography is my medium. I know when my images portray the idea I had in mind, I get an undeniable physical sensation in my stomach. It elicits a thrill and a high that is matched by nothing else in life. I specialize in Fine Art Photography with a special flare and interest in abstract and mixed media work."

Visit Sherry's studio in the South Warehouse, Building #10, on the TwispWorks campus. Open Saturdays through October and by appointment.

CONTACT: 360-303-2076, sherry@sherrymalotte.com. Find her on Instagram @sherrymalottephoto and online: www.sherrymalotte.com.



24HR MART PRESENTS: NEW PAINTINGS BY KIMBERLY TROWBRIDGE

PRISMATIC OPTICAL PHENOMENA: SEVEN PAINTED CANVASES ATTEMPTING TO CONVEY THE UNIFICATION OF PARALLEL LANDSCAPES THROUGH THE PRISM OF HER INNER SELF

24HR MART exhibits a series of large-scale oil paintings by acclaimed PNW artist, Kimberly Trowbridge. Trowbridge is passionate about perceiving color relationships in nature and approaches the painting process as a means for self-discovery. As an artist-in-residence at 24HR MART, Trowbridge spends her time collecting color "data" from the landscape in the form of plein-air paintings. She describes the process of painting from nature as a way of "calibrating [her] senses to a particular, prismatic tune." Her plein-air works become the documents of this "tuning" process, and she uses them to inform the development of her massive, in-studio paintings.

In addition to being a masterful painter, Kimberly is a performer, a song-writer, an installation artist, and a mentor. She is the director of the Trowbridge Atelier through Gage Academy of Art, in Seattle. She is well-known for her ability to articulate color concepts in a direct and poetic manner that engages students in the process of analyzing and responding to observed color. She explains her painting philosophy with a quote

by Matisse: "I do not paint things; I paint the differences between them."

Trowbridge leads plein-air painting retreats in the Alentejo region of Portugal, and in Twisp, WA. She has discovered a sentient portal between these landscapes, experienced through the color calibration of their parallel palettes. Through this process, she has realized the potential for an infinitely connected landscape of her cumulative and non-linear experience. Her large studio paintings are the exploration and synthesis of this discovery. In Prismatic Optical Phenomena, Trowbridge presents a series of paintings that combine data from multiple landscapes including Twisp, the Oakridge Forest in Oregon, and her own backyard in Top Hat, Seattle.

DATES: Exhibition: Sat, Sept 2- Oct 21. Reception: Sat, Sept 9, 6-10pm. Gallery Talk: Sun, Sept 10, 11am. LOCATION: 24 HR Mart, 112 Glover St, Twisp, WA. Open Saturdays 9-5pm; Sun-Fri: 11-1pm and by appointment. CONTACT/INFO: max@twentyfourhourmart.com, www.facebook.com/pg/24hrmart

Wine and Beer Cellar

www.gloverstreetmarket.com 124 N Glover St, Twisp

- Juice Bar
- Breakfast & Lunch
- Natural Foods
- Local Produce
- Bulk Foods
- Bulk Herbs & Spices

glover street market

wine pours Saturdays 2 - 6pm

WASTEWISE

WasteWise is committed to the responsible management of the Valley's waste stream – offering creative garbage & recycling solutions for your home or business in the Methow.

509-997-8862 • WASTEWISEMETHOW.COM

TWISPPWORKS.ORG

WHERE PEOPLE, PLACE AND IDEAS COME TOGETHER.

EXPLORE · CREATE · SHOP · GATHER

502 S. GLOVER STREET – TWISP, WA 98856 509-997-3300

SPONSOR OF

METHOW MADE

METHOW ARTS PRESENTS

TAIKOPROJECT



The TAIKOPROJECT team is made up of the best and brightest young taiko performers in the U.S. Since its founding, the group has been fiercely gender-balanced and has embraced the multi-cultural openness that has allowed the art form to thrive in America.



From Los Angeles, California they were seeking to create a truly American style of taiko, blending

traditional forms in which they were raised, with an innovative and fresh approach to the Japanese drum.

TAIKOPROJECT first made waves when they became the first American taiko group to win the prestigious Tokyo International Taiko Contest, besting all of the Japanese taiko groups in the competition. That year, they were cast in the Mitsubishi Eclipse commercial, the first and still only national advertising campaign to prominently feature taiko.

TAIKOPROJECT has performed and recorded with Stevie Wonder, Usher, Alicia Keys, A.R. Rahman, John Legend, Kanye West and many more. They have performed on the Academy Awards, the Grammy Awards, NBC's "The Voice," Syfy's Face/Off, The X-Factor, rock band 30 Seconds to Mars' "Up in the Air" music video, Conan, Jimmy Kimmel Live, the iHeartRadio Music Festival, and were honored with the prestigious Visionary Award from East West Players.

TICKETS AND SHOW INFO

DATE: Sat, Oct 14, 7pm. **LOCATION:** Winthrop Barn, Winthrop, WA. **TICKETS:** \$25/ PREMIUM Reserved seating -first 5 rows. \$16/advance adults, \$19/door, \$7/kids ages 5-15years old. At TAIKOPROJECTWinthrop.brownpapertickets.com, Riverside Printing in Winthrop (behind Courtyard Quail) and at Methow Arts in Twisp, Wa. **CONCESSIONS:** Beer, wine and sodas available for purchase. Volunteers wanted. **CONTACT:** info@methowartsalliance.org, 509-997-4004



FREESTONE INN

AT WILSON RANCH



Featuring the Moonshine Bar



Visit this summer for a relaxing getaway. Enjoy the surrounding beauty and outdoor experiences that make Mazama what it is. Biking, hiking, or simply relaxing in the hot tub, it's all waiting for you right here at the Freestone Inn.

31 Early Winters Drive, Mazama, WA 509-996-3906 OPEN DAILY 8am-close

