

art MAGAZINE



FEATURED ARTIST: HANNAH VIANO

**INSIDE THIS ISSUE
SUMMER 2018**

YOUR GUIDE TO LOCAL ARTS & CULTURE IN THE METHOW VALLEY AND BEYOND. EVENTS, PUBLIC ART, FESTIVALS, CLASSES, RESOURCES. [METHOW ARTS.](http://METHOWARTS.COM)

Purple Sage Gallery
Art made by regional artists & friends.

On the boardwalk
Mon-Sun 10am to 4pm
245 Riverside Ave.
Winthrop, WA

Central Reservations Est. 1982
Book your Methow Valley getaway locally.

We offer secure online booking 24/7. We feature licensed, legal nightly rentals and local inns, as well as extended stay homes.

WWW.CENTRALRESERVATIONS.NET

"Central Reservations is a real gem. They make it easy to find a vacation rental that works perfectly for you. I wish other vacation spots that we visit had booking services as great as them!"

You are also welcome to stop by our office at 245 Riverside Ave, inside the Purple Sage Gallery on the boardwalk, in downtown Winthrop.

1-509-996-2148.

METHOW ARTS METHOW ARTS ALLIANCE
POST OFFICE BOX 723
TWISP, WASHINGTON 98856

PRST
U.S. Postage
PAID
Wenatchee, WA 98801
Permit No. 241



SUMMER 2018

A WORD FROM OUR EXECUTIVE DIRECTOR

Amanda Jackson Mott
Executive Director,
Methow Arts Alliance

Summer is here and The Arts are bustling. I invite you to celebrate the 4th of July in Twisp, WA with music, ARTmaking, bicycles, dance, aerial arts, bicycle decorating, pie-eating contests and so much more.... Different from many Arts Festivals ours is all about engaging with art through compelling stage performance throughout the day and over a dozen hands-on arts booth. New this year, thanks to the generosity of our donors and sponsors, kids (5-18 years) get unlimited art-making for free with \$5 admission. The art booths give Arts Fest participants a chance to engage with the bicycle and ART with a bicycle decorating station (baskets, flag making and even personalized bicycle license plates) with projects ranging in difficulty from simple to intricate, to appeal to all age groups and levels of manual dexterity. Along with perennial favorites like face painting and tie-dye t-shirts, Arts Fest 2018 booths

include bicycle wind chimes, pendants and many more opportunities to get creative. You can read more on the opposite page about the details.

Several local organizations including the Merc Playhouse, Methow Valley Interpretive Center and Cascadia Music offer an array of summer camps for kids, ranging from Theatre Arts to Visual Arts and Music, be sure to enroll early to guarantee a spot (they fill up fast!) All information can be found on page 13 and in our calendar pages 4-5.

The Methow Valley Chamber Music Festival, July 26-August 4, brings five nights of stunning Centerstage concerts at its site perched high above the valley at Signal Hill Ranch, and offers free, informal music at venues throughout the valley. See page 18 for details. And the ever-popular Rhythm & Blues Festival launches on July 21-23 just outside of Winthrop for a three day journey packed with talent. Read about the line up on page 16.

Finally if you haven't had a chance make time to explore the new campus at TwispWorks and their Grand Plaza be sure to make time for its offerings, including a splash pad for kids, artwork by Hannah Viano and outdoor amphitheatre. And many will welcome the addition of a taproom from the award-winning Old Schoolhouse Brewery based in the Methow Valley.

If you have any questions about or would like to know more about our programs, please contact me at 509-997-4004 or amanda@methowartsalliance.org.

Sincerely,

Do you enjoy receiving a copy of this magazine in your mailbox? Please **renew your membership** so that we can continue your subscription. **Thank you.**

____\$35, ____\$50, ____ \$100, ____other

Please mail check to:
Methow Arts, PO BOX 723, TWISP, WA 98856



METHOW ARTS

Methow Arts Alliance
109 Second Avenue, PO Box 723
Twisp, WA 98856
509.997.4004
www.methowarts.org

METHOW ARTS ALLIANCE is a non profit organization founded in 1983 that enriches the lives of our community through a variety of diverse art programs.

Board of Directors

Don Ashford, President
T. Lewis, Vice President
Frauke Rynd, Treasurer
Alison Philbin, Secretary
Jonathan Baker
Hannah Cordes

Staff

Amanda Jackson Mott, Executive Director
Ashley Lodato, Arts Education Director
Izze Jennings, Office/Advertising



MAGAZINE connects audiences with the work of our many resident and visiting artists and the organizations that provide a breadth of arts programming. Our magazine is a celebration of the vision, genius and creativity that abound in the Methow Valley and beyond. To receive this publication in the mail, please become a member of our organization and we will gladly mail you a copy quarterly. Thank you for supporting a diverse and plentiful arts community.

Published and designed by Methow Arts Alliance info@methowartsalliance.org - 509.997.4004

www.methowarts.org

CONTRIBUTORS

FEATURE PHOTOGRAPHY:

Sol Gutierrez

FEATURE ARTICLE:

Marcy Stamper



The ART Magazine is published quarterly by Methow Arts Alliance, a non-profit organization. All contents are copyrighted and may not be used without the express consent of the publisher.

DESIGN/LAYOUT/EDITING: Methow Arts Alliance

Subscribe: info@methowartsalliance.org

www.MethowArts.org

#accesstoimagination #methowarts

2018 ARTS PARTNERS

 Twisp, WA 98856 509.997.7529 www.mercplayhouse.org	 Winthrop GALLERY 509.996.3925 www.winthropgallery.com	 cascadia music Twisp, WA 98856 509.997.4601 www.cascadiamusic.org	 IT'S REAL TWISP THE METHOW VALLEY Twisp, WA 98856 509.997.2926 www.twispinfo.com	 WINTHROP RHYTHM & BLUES FEST Winthrop Music Association 509.997.3837 www.winthropbluesfestival.com	 METHOW ARTS 109 2nd Ave, Suites B/C PO Box 723, Twisp, WA www.methowarts.org
 TWISPPWORKS TwispWorks 509.997.3300 www.twispworks.org	 CONFLUENCE gallery & art center 509.997.2787 www.confluencegallery.com	 METHOW GALLERY D*Signs and Methow Gallery 109 Glover St. Twisp, WA 98856 509.997.0255 www.twispinfo.com	 Methow Valley Chamber Festival 509.996.6000 www.methowmusicfestival.org	 door 3 no. Twisp, WA 98856 509.449.1081 info@doorno3.com www.doorno3.com	

SUPPORTERS

THANK YOU.



Methow Valley Fund



ICICLE FUND

METHOW ARTS MEMBERS!



arts.wa.gov



NATIONAL ENDOWMENT FOR THE ARTS



a bicycle-inspired
METHOW ARTS FESTIVAL
WED, JULY 4TH, 11:30-4PM
TWISP RIVER PARK

METHOWARTS.ORG



nectar skin bar

boutique - facials - waxing - lashes - massage

open everyday 10am-5pm

downtown winthrop, wa

509-996-2417 | info@nectarskinbarwinthrop.com | nectarskinbarwinthrop.com



a bicycle-inspired METHOW ARTS FESTIVAL

THE PAPERBOYS

- WHITNEY MONGE
- TRIALS STARS BIKE SHOW
- EMCEE DON ASHFORD
- AERIAL ARTS WITH SARAH PROCHNAU
- CHRISTINA STOUT
- THE NATE HIRSCH BAND
- KEELEY BROOKS
- PIE-EATING CONTESTS
- BICYCLE DECORATING CONTEST
- LOCAL FOOD ZONE
- BEER GARDEN



WED, JULY 4TH, 11:30-4PM TWISP RIVER PARK

Ride your bicycle down for a day of ART and Music in the park.

CASH/CHECK ONLY!

NEW THIS YEAR!

KIDS (5+) GET UNLIMITED ART-MAKING FREE WITH ADMISSION.

TICKETS: \$12/ADULTS, \$5/KIDS 5-18

We invite you to celebrate the 4th of July in Twisp, WA with music, ARTmaking, bicycles, dance, aerial arts, bicycle decorating, pie-eating contests and so much more....

THE PAPERBOYS

The ever-popular headliners -The Paperboys - serve up a heady blend of country-folk-celtic-bluegrass-rock with a bit of traditional Mexican music thrown in for good measure. Lead singer Tom Landa and the Paperboys are renowned for their energetic live performances and create a buzz wherever they play. Their excellent



musicianship creates a sound that fills the venue and the overall effect is exhilarating.

WHITNEY MONGÉ

Whitney is an alternative soul artist based in Seattle and was once known for being the "Best Busker in Seattle". Raised with rhythm and blues in her blood, her music is also influenced by growing up in the Pacific Northwest, and the rock scene of the 90's coining her own genre, Alternative Soul. Her music has transcended to a national level supporting acts, Ziggy Marley, Allen Stone, KT Tunstall, Patrick Sweany and Mayor Hawthorne. Catching the attention of the masses with her dynamic voice and heartfelt performances.

TRIALS STARS - BIKE SHOW

The Trials Stars can wow audiences at your event with their world class bicycling skills. The Trials Stars Bike Demonstration Team consists of two of North Americas top bike trial riders, Jeff Anderson and Steve Dickin. Both Jeff and Steve have been performing trials shows since 2004. These riders are also international competitors, competing for Canada overseas in China, Australia, New Zealand, and Italy.



ART-MAKING BOOTHS

The art booths give Arts Fest participants a chance to engage with the bicycle and ART with a bicycle decorating station (baskets, flag making and even personalized bicycle license plates) with projects ranging in difficulty from simple to intricate, to appeal to all age groups and levels of manual dexterity. Along with perennial favorites like face painting and tie-dye t-shirts, Arts Fest 2018 booths include bicycle wind chimes, pendants and many more opportunities to get creative.

FOOD ZONE AND BEER GARDEN, pie -eating contest and bicycle decorating contest.

Food vendors include FORK food truck, Rockinghorse Bakery, La Fonda Lopez and Iced Blue Star Coffee. Enjoy OSB beer and other cocktails in the beer garden. Be sure to sign up at entry to get a chance to participate in the Pie Eating Contest (this year we'll choose names from a hat. Starts at 12:15 at the stage! Bring your bicycle and decorate it at our Arts Booth for a chance to win the bicycle decorating contest and participate in our bicycle procession.

DATE: Wed, July 4, 11:30-4PM. LOCATION: Twisp River Park, Twisp, WA. TICKETS: \$12/ADULTS, \$5/KIDS 5-18. Kids (5+) get unlimited art-making free with admission. Kids under 5 are free. www.methowartsfest18.brownpapertickets.com or Methow Arts office, Twisp. INFO: methowarts.org, info@methowartsalliance.org



TRAIL'S END BOOKSTORE



UPCOMING EVENTS

JOIN US THIS SUMMER
FOR READINGS,
AUTHOR VISITS AND MORE.

 FIND OUR EVENTS
ON FACEBOOK
@trailsendbookstore

FIND OUR BOOKS ONLINE @
WWW.TRAILENDBOOKSTORE.COM



books for all ages • hot & iced espresso drinks • games • puzzles • occasion cards & more!
open every day 10am - 6pm • 241 Riverside Ave., Winthrop, WA • 509-996-2345

SUMMER CALENDAR

EVENTS/CLASSES/EXHIBITS

FIND UPDATES, FULL ARTICLES AND MORE EVENT LISTINGS AT METHOWARTS.ORG

ONGOING CLASSES/EVENTS

Line Dancing at the Twisp Grange
Mondays, 6pm
\$4. 509-429-2064. Twisp Grange.

Trivia Night at Methow Valley Ciderhouse
Mondays, 6pm
Methow Valley Ciderhouse, methowcider@gmail.com

Craft Night at OSB Taproom
Wednesdays, 6pm
OSB Taproom on the TwispWorks campus.

Fix Your Gear Night
First Thursday of each month, 4-7pm
At eqpd, TwispWorks Campus

Studio Saturdays at TwispWorks
Saturdays, 10-3pm
TwispWorks Campus. www.twispworks.org

Game Night at the OSB Taproom
Saturdays, 6pm
OSB Taproom on the TwispWorks campus.

Movie Night at the OSB Taproom
Sundays, 6pm
OSB Taproom on the TwispWorks campus.

JUNE

Bob Kramer – Knife Sharpening 101
Sat, June 2, noon-4pm
See article. At TwispWorks. Limited space.
509-997-3300

First Tuesday: Creating North Cascades National Park
Tues, June 5, 7pm
"Crown Jewel Wilderness: Creating North Cascades National Park" with speaker Lauren Danner. Location TBD.
Free. www.methowconservancy.org

Jazz and blues pianist Paul Klein
June 5, 5-7pm
At Twisp River Suites. Free. 997-0100.



(Visit the Farmer's Market in Twisp on Saturdays for local art, food, veggies, music. Twisp, WA. Photo, Door No. 3)

RFP-Call for Artists for Twisp Gateway and Public Artwork
Deadline June 22
\$60,000 budget, See pg. 7 for details.
amanda@methowartsalliance.org

Winthrop Gallery: Home & Garden
June 6-July 23; Artist reception Sat, June 9, 11-3pm
Co-op gallery artists present hand-made original artworks. See article. At Winthrop Gallery, 237 Riverside Ave, 509.996.3925
www.winthropgallery.com

Jed McMillan's Photography at La Fonda Lopez
Through June 30
Student photography exhibit at La Fonda Lopez.
methowarts.org/behind-the-barn/

Register now for July 30-Aug 3 Pipestone Summer Music Camp
Mon, July 30-Aug 3
Register early for a high energy, intensive week of music education held at the Methow Valley Community Center. See article for info. 509-997-0222, cascadiamusic4u@gmail.com

Register now for Aug 6-11 Summer Musical Theater Camp at the Merc
Aug 6-11, Public performance Aug 10 and 11
See article for fees and information, pg 13. Merc Playhouse.
Twisp, WA. 509-997-7529, info@mercplayhouse.org

Exhibits: Snk'lip Nc'aps: Coyote Winked; Native Art from the Indigenous Plateau and Kalindi Kunis: Inflorescence
Through June 30, 2018
509-997-ARTS, confluencegallery.com

Smokejumper Base Concert
Sat, June 16, 4-10pm
Free admission. Live music Terry Hardesty and the Last Outlaws, Danbert Nobacon & the Axis of Decent, Sky Kyss, Danville, Laura Love and Her Terry John Doran Ranch, Twisp, WA.

RFP-Call for Artists for Twisp Gateway and Public Artwork
Deadline June 22
\$60,000 budget
See pg. 7 for details.
Contact: amanda@methowartsalliance.org

Potluck in the Park with the New Old Time Chautauqua traveling troupe
Fri, June 22
At Pearygin State Park, 561 Bear Creek Rd, Winthrop, WA.
Free – bring a dish to share. chautauquatwisp.com

New Old Time Chautauqua Parade
Sat, June 23, noon
Begins at MV Community Center. See article.
chautauquatwisp.com

New Old Time Chautauqua Workshops
Sat, June 23, 1-4pm
30-minute workshops. See article. TwispWorks, 502 S Glover St, Twisp. chautauquatwisp.com

First Annual Methow Valley Brewfest
Sat, Jun 23, 5pm
Red Barn · Winthrop, WA

New Old Time Chautauqua Main Stage Show
Sat, June 23, 7pm
Circus and performance at the Methow Valley Community Center, Twisp, WA. chautauquatwisp.com

Ancient Artifacts Tell the Story of the People



(Enjoy music from the popular The Paperboys at this year's Methow Arts Festival in Twisp River Park on the 4th of July. See page 3 for details on all performance and more.)

The BARNYARD CINEMA

Movies & Events ★ Beer & Wine

Movie listings and hours of operation can be found on our website or by phone

www.thebarnyardcinema.com

509-996-3222

twisp river suites Stay and play this spring!

At the Methow Valley's Top Rated Hotel

★ spacious riverfront suites ★ full kitchens
★ private fireplaces and screened-in porches
★ deep soaker tubs ★ live weekend entertainment
pet friendly units available

breakfast included, smiles guaranteed!

855.784.8328 • 140 W. Twisp Ave. • TwispRiverSuites.com

BUY ART SUPPORT ARTISTS

ART MATTERS

confluencegallery.com

Your local non-profit art gallery supporting Okanogan County artists for 30 years.

Confluence Gallery and Art Center

THE WINE SHED

WINE BEER SPIRITS TASTINGS

Downtown Winthrop
130 Riverside Avenue

Find us on Facebook!



(Featured artist Danbert Nobacon, ART magazine cover, 2013.)

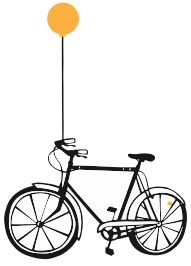
Sun, June 24, 5-7pm

Rich Davis and Aaron Nauman present about the Methow Artifacts Research Project and share the stories that the artifacts tell us about the indigenous people of this valley. Methow Valley Interpretive Center, TwispWorks campus. By donation. 509-997-0620, mvinterpretivecenter@gmail.com

JULY

Methow Arts Festival

Wed, July 4, 11:30-4pm
Ride your bike down to a bicycle-inspired Arts Fest with performance from The Paperboys, Whitney Mongé and more. Bike stunts with Trials Stars, Art Booths, Beer garden, Pie-eating contest, Food zone. See article pg 3. \$12/adults, \$5/kids 5-18. Kids get unlimited art-making with admission. methowarts.org/methow-arts-festival-2018, info@methowartsalliance.org



Birds and Bees Exhibit

July 7, opening reception, 4-8pm; Exhibit: July 7-Aug 11
Curator Caryl Campbell. With artist Mary Apffel in the Community Gallery. See articles. 509-997-ARTS, confluencegallery.com

Bike America at the Merc

Fri, July 13-Sun, July 22
Peddle along a cross-country journey with feckless heroine Penny, who is searching for meaning in her life on a bicycling trip. At the Merc Playhouse, \$16 - \$18. See article pg. 6 for ticket info and times. info@mercplayhouse.org, 509-997-7529

Chamber Music 2.0 at TwispWorks

Sat, July 14, 1pm
TwispWorks, Twisp, WA, methowmusicfestival.org

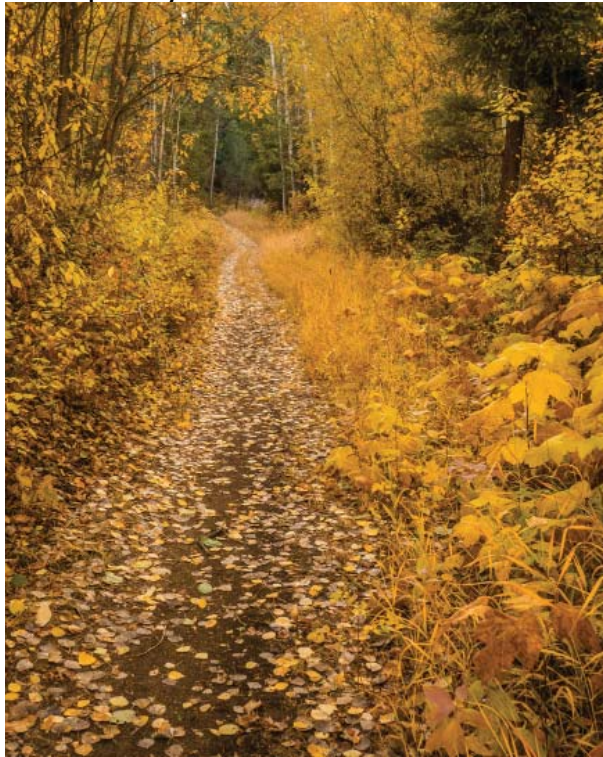
Winthrop Rhythm and Blues Festival

July 20-22
The Blues Ranch \$110/weekend pass:
tickets: www.tickettomato.com/event_group/211/winthrop,
info: winthropbluesfestival.com. See article.

Artist to Artist: Door No. 3 Print Arts Studio

July 21st, 5pm-7pm
At Door No. 3 Print Studio on the TwispWorks campus.
509-997-ARTS, confluencegallery.com

Winthrop Gallery: Sustenance



Reflected Light Photography

events, dogs, fine art
photos by Teri J Pieper
member of The Winthrop Gallery
www.teripieper.com
tjpieper@gmail.com | 509.630.6224



Do you enjoy receiving a copy of this magazine in your mailbox?
Please **renew your membership** & continue your subscription.
Thank you for your support. ___\$35, ___\$50, ___\$100, ___other

Please mail your check to: METHOW ARTS, PO BOX 723, TWISP, WA 98856

July 25-Sept 17; Reception Sat, July 28, 11am-3pm
Hand-made original artwork by co-op gallery artists. See article. At Winthrop Gallery, 237 Riverside Ave, 509.996.3925
www.winthropgallery.com

Methow Valley Chamber Music Festival

July 26 to Aug 4
5 Centerstage concerts (July 26, July 28, July 31, Aug 2, Aug 4)
Check website for schedule of free open rehearsals, a chance to meet the musicians and centerstage concerts. At Signal Hill Ranch. Tickets/info, www.methowmusicfestival.org.

Woodblock Printing as Mixed Media
July 28- 29
Two day workshop with Janet Fagan. See article. \$150.00.
Register, Confluence Gallery, 509-997-ARTS,
confluencegallery.com

Last Sunday Presentation: First Peoples Skills Demonstrations
Sun, July 29, 5-7pm
Methow Valley Interpretive Center, TwispWorks campus
Admission by donation, 509-997-0620,
mvinterpretivecenter@gmail.com

Pipestone Summer Music Camp
Mon, July 30-Aug 3
Register early for a fun, high energy, intensive week of music education. At the Methow Valley Community Center. See article for pricing, dates and ages. 509-997-0222,
cascadiamusic4u@gmail.com

AUGUST

Methow Valley Chamber Music Festival

July 26 to Aug 4
5 Centerstage concerts (July 26, July 28, July 31, Aug 2, Aug 4)
Check website for schedule of free open rehearsals, a chance to meet the musicians and centerstage concerts. At Signal Hill Ranch. Tickets/info, www.methowmusicfestival.org.

Birds and Bees Exhibit

Through Aug 11
With artist Mary Apffel in the Community Gallery
509-997-ARTS, confluencegallery.com

In the Land of Snow and Sun: Methow Valley Home Tour

Aug 4, 10am-4pm
Tickets on sale at Brown Paper Tickets and at the Confluence Gallery. 509-997-ARTS, confluencegallery.com
Summer Musical Theater Camp at the Merc



LIVE MOUNTAIN STUDIOS

recording mixing mastering

www.livemtstudios.com
509 207 9009
winthrop wa

Aug 6-11, Public performance Aug 10 and 11
Ages 8-14. See article for fees and information, pg 13.
Merc Playhouse. Twisp, WA. 509-997-7529,
info@mercplayhouse.org

Three Rivers Hospital Student Art Exhibit Open House

Thurs, Aug 16, 5-6pm
An open house to celebrate the original artwork of students from Bridgeport and Brewster created through Methow Arts Alliance programs. See article. At Three Rivers Hospital, Brewster, WA. methowarts.org, info@methowartsalliance.org

Reflections on Water

Opening reception, Aug 18, 4-8pm; Exhibit Aug 18- Sept 22
Volunteer Curator: Jennifer Molesworth. With artist Michael Caldwell in the Community Gallery. See articles.
509-997-ARTS, confluencegallery.com

SEPTEMBER

Save the Date for George Winston

Tues, Sept 25, 7pm
Renowned pianist returns to Twisp, WA. See article.
\$30/door, \$25/advance at brownpapertickets.com. LOCATION: Community Center in Twisp. INFO: 509-997-0222,
www.cascadiamusic.org

FIND UPDATES, FULL ARTICLES
AND MORE EVENT LISTINGS AT

METHOWARTS.ORG



a bicycle-inspired
METHOW ARTS FESTIVAL
WED, JULY 4TH, 11:30-4PM

TWISP RIVER PARK



METHOWARTS.ORG

Integrated
Design Concepts, Inc.
A CUSTOM DRAFTING & DESIGN SERVICE

RESIDENTIAL, COMMERCIAL & LIGHT INDUSTRIAL DESIGN

Howard Cherrington
PO Box 681
Twisp WA 98856
509.997.4865

www.integrateddesignconcepts.com



Delectable breads, pastries, espresso, teas, soups and sandwiches
featuring locally produced ingredients.....all handcrafted daily

265 Riverside Ave, Winthrop, WA 509-996-4241

OPEN EVERY DAY



[THE MERC PLAYHOUSE]

BIKE AMERICA

by Mike Lew

This summer, peddle along a cross-country journey with feckless heroine Penny, who is searching for meaning in her life on a bicycling trip from Boston to California, in The Merc Playhouse's production of Bike America. After leaving her boyfriend behind to find a lifestyle that suits her and a place that feels like home, Penny befriends a colorful crew of bikers: Ryan, the health nut and their cycling instructor; Tim Billy, the adventurous wanderer; Annabel and Rorie, the lesbian activists seeking to get gay-married in every state they hit on the trip; and the mysterious Man with the Van who carries all their stuff. Featuring an hilarious cast of local actors, Bike America is a multi-state, multi-generational odyssey to examine our obsession with happiness.

DATES: Opens Fri, July 13; runs through Sun, July 22; Thurs, July 19, Pay What You Can Night. Thurs- Sat performances, 7pm; Sunday matinees, 2pm. Doors open 30 minutes prior to show time. TICKETS: \$16 - \$18/adults online: mercplayhouse.org. Limited advance reserved seating available until 75 minutes before show time. CONTACT/LOCATION: The Merc Playhouse, info@mercplayhouse.org, 509-997-7529. Bike America is produced by special arrangement with Samuel French, Inc.



[CONFLUENCE GALLERY]

WHAT'S THE BUZZ?

CONFLUENCE GALLERY HOLDS BIRDS AND BEES ART EXHIBIT

In 1918 Congress passed the Migratory Bird Treaty Act to protect birds from wanton killing, and the National Geographic, Audubon Society, Cornell Lab of Ornithology and others have declared 2018 as the Year of the Bird in celebration of the centennial.

Caryl Campbell, the Birds and Bees volunteer curator, wants to stimulate a dialog within our community: Why do birds and insects matter? This is a simple question with an answer that remains a vital piece of the Year of the Bird.

As Thomas Lovejoy, the proclaimed Godfather of Biodiversity, says, "If you take care of the birds, you take care of most of the big problems in the world."

The Birds and Bees show comes to the Methow Valley at the perfect time: Over 150 organizations worldwide are contributing to the Year of the Bird and the Confluence Gallery is providing a visual and artistic contribution to the effort. July 7th, the Birds and Bees art exhibit migrate to our gallery walls in downtown Twisp.

READ MORE @ methowarts.org/whats-the-buzz/ DATE: Opening reception, July 7, 4-8pm; Exhibit, July 7-Aug 11. INFO: Confluence Gallery and Art Center, 104 Glover Street Twisp, WA, 509-997-ARTS confluencegallery.com

(Wyoming Pastoral by Michael Caldwell.)

Reflected Light
Photography

events, dogs, fine art
Your Methow Experience

photos by Teri J Pieper
www.teripieper.com
509.630.6224 | tjpieper@gmail.com
member of The Winthrop Gallery

SHADOWLINE
DESIGN & CONSTRUCTION, INC.

THE DREAM MAKERS

DONALD K. MILLER
509 996 3200
shadowline@methow.com
Web Page
methow.com/shadowline

wqpd

Our intent is to use the principles of Industrial Design to create regional manufacturing jobs building durable, practical, universal goods.

FACTORY STORE OPEN 10-4 MONDAY - SAT
TwispWorks Campus 502 South Glover St. Twisp, WA

MADE IN TWISP, WA

eqpdgear.com

1 LASTBAG REPLACES 300+ SINGLE-USE BAGS PER YEAR

THE LASTBAG
RESPONSIBLE FOR A LIFETIME

Open Studio Saturdays

Hand printed paper & fabric goods
 Letterpress Demos & Art Activities
 10am - 3pm Saturday or by appointment
 at TwispWorks in Twisp!

info@doorno3.com ph. 509-449-1081 doorno3.com

Door No. 3
Print Studio





[WINTHROP GALLERY]

HOME & GARDEN

The human soul is hungry for beauty; we seek it everywhere - in landscape, music, art, clothes, furniture, gardening, and in ourselves. When we experience beauty, there is a sense of homecoming.

In June and July the artists of the Winthrop Gallery will present works that celebrate the joy art brings into our homes. This show will feature art inspired by gardens and the outdoors, plus beautiful objects to grace our lives.

DATES: Exhibit: June 6-July 23; Opening Reception: Sat, June 9, 11am-3pm. Refreshments will be served.
LOCATION: The Winthrop Gallery, 237 Riverside in downtown Winthrop. HOURS: Open every day, 10am to 5pm. INFO: 509-996-3925, www.winthropgallery.com.



(Artwork left, Sassy by Patty Yates; right, Plant designs, Pearl Cherrington.)

[METHOW ARTS AND THE TOWN OF TWISP]

THE TOWN OF TWISP COMMITS \$60K TO PUBLIC ARTWORK

REQUEST FOR PROPOSALS – TOWN OF TWISP GATEWAY AND PUBLIC ART PROJECT



DEADLINE: JUNE 22, 2018, BUDGET: \$60,000

The Town of Twisp cordially invites applications from artists or artist teams to submit proposals for site-specific outdoor public artwork for the Town of Twisp Gateway and Public Art Project. Artwork will enhance the community, inviting visitors to Twisp, WA and link the community to our offerings. Selected artwork will align with the following goals of the Town of Twisp. Preference will be given to artists or artist teams residing in North Central Washington. We look forward to working with you and viewing your ideas!

OVERVIEW AND BACKGROUND OF TWISP, WA Twisp, a small town in Okanogan County in north central Washington, sits at the confluence of the Twisp and Methow rivers

in the eastern foothills of the majestic North Cascade Mountains. Twisp's central location is approximately half way down the Methow Valley from the mountain headwaters to the Columbia River. The arts play a significant role in Twisp impacting and enriching the lives of residents and visitors alike. Art studios, events, performance and galleries sprinkle the downtown corridor, while art installations can be seen throughout the town – weaving together the community-minded life of Twisp, WA.

THE PROJECT – TWISP, WA GATEWAY PROJECT The Town of Twisp, with assistance from Methow Arts Alliance, seeks to commission an artist or artist team to create outdoor sculptures or sculptural installations for this pair of gateway artwork. Proposals should include original artwork at both locations (North and South) at the edges of the Twisp Town limits along Highway 20. The artwork will serve as a welcome into Twisp at both locations. The artwork should be designed to be installed on both sides of the road at each end of town (four elements total.) Original art should reflect the character of the community, be unique, and complement the attractive local elements of the town. Considerations for the design and theme of the work may consider the unique character of the town, its natural surroundings, and sense of community. Dimensions should be large enough to be welcoming – scaled to the proposed placement area for the gateways. Scalability is desirable. Preference will be given to artists or artist-teams residing in North Central Washington. We look forward to working with you and viewing your ideas!

INFO/APPLICATIONS: Applications forms, detailed information and more can be found at methowarts.org/twisp-gateway-and-public-art-project. Email Methow Arts with questions and/or to schedule a consultation, amanda@methowartsalliance.org



Breathtaking Setting



Unique Concerts



Thrilling Artists

winthrop mountain sports

OPEN DAILY!

Supporting the fine art of winter recreation!

509.996.2886
257 Riverside
Winthrop, WA 98862

www.winthropmountainsports.com



**METHOW VALLEY
CHAMBER MUSIC FESTIVAL**

JULY 26 - AUGUST 4
www.methowmusicfestival.org

509.341.4063

PINE NEAR RV PARK

Enjoy Old West Winthrop
Dive Back Above Main Street
Dine, Dance, Shop & Explore

Pull Thru 30/50 amp Sites
1/2 hour to North Cascades
Walk to Town • Walk to Nature Trails
Excellent Cell Service & Satellite Reception
Coin Laundry & Showers • Free Wi Fi that Works

www.pinenearpark.com



(Wyoming Pastoral by Michael Caldwell.)

[CONFLUENCE GALLERY]

TINY & MIGHTY: THE COMMUNITY GALLERY

By Rose Weagant Olcott

Tucked in the back of the bustling Confluence Gallery is the Community Gallery: a small hallway with gallery lighting and gallery white walls. Not overtly noticeable, hung with beautiful pieces, most gallery visitors find themselves looking over an artist's progress through their oeuvre.

The room is tiny yet mighty and serves a purpose for the local and regional art community as a means to show their full breadth of work from a particular time. "The Community Gallery is the perfect area for an emerging artist to feature their work," says Confluence Executive Director Sarah Jo Lightner. "A solo show is the foot in the door that everyone needs to propel them into getting more art gallery representation, and we want to help our local and regional artists get there."

The Community Gallery exhibits change concurrently with the main gallery shows. "While they do complement the main show, the Community Gallery Exhibit is its own experience entirely," says Lightner.

The Community Gallery Summer exhibit lineup includes bodies of work from local painters Mary Apffel and Michael Caldwell. Mixed media collage artist Mary Apffel blends nature and light and brings enchanted realism to her work. A resident of the Methow for over 35 years, Apffel draws upon her experiences in the area for

inspiration. Apffel's art show complements the Birds and Bees exhibit in the Confluence Main Gallery, opening on July 7th.

Artist Michael Caldwell came to the Methow Valley with his wife after 36 years at Seattle Pacific University where he was an Art Professor. Caldwell's representational landscapes capture the big skies from Washington to Montana and beyond. Caldwell's show accompanies the Reflections on Water exhibit in the Main Gallery which opens August 18.

DATES: Mary Apffel's Mixed media collage exhibit, July 7-Aug 11; Michael Caldwell's exhibit, Aug 18-Sept 22. INFO: Confluence Gallery and Art Center, 104 Glover Street Twisp, WA, 509-997-ARTS, confluencegallery.com



METHOW SKILLS PRESENTS: BOB KRAMER – KNIFE SHARPENING 101

Bob Kramer's story began in the kitchen...after ten years spent working in professional kitchens Bob still didn't know the secret to keeping his knives sharp. What began as a simple question became an all consuming quest to learn all he could about blades and how to care for them culminating in Bob's position as one of only 120 Master Bladesmiths in the United States. Here is your chance to learn from a man who has devoted his life to the single-minded pursuit of crafting the perfect kitchen knife. Read more here: methowarts.org/bob-kramer-knife-sharpening-101/

DATE: June 2, noon-4pm. REGISTER/LIMITED SPACE: Participation in the hands-on workshop is limited to 12 and pre-registration is required. Register by calling 509-997-3300 or emailing register@twispworks.org LOCATION: Bob's class will be held in Your Space@ TwispWorks (formerly the Education Station) on the TwispWorks campus.



METHOW SALMON RECOVERY FOUNDATION
SALMON - PUBLIC ART - EDUCATION - HABITAT - COMMUNITY
509.429.1232 - www.MethowSalmonRecoveryFoundation.org





[WINTHROP GALLERY]

SUSTENANCE

From late July to mid-September the artists of the Winthrop Gallery will present a show of art that contemplates the concept of sustenance. The things that not only feed our bodies but also nurture our souls.

For this show, encaustic painter Tamara Abate offers a new work titled "Feels Like Home." For Tamera this piece represents both a gathering of childhood memories of springtime on her family's wheat farm in the Columbia Basin and a reflection on the sustenance the farm has provided for five generations.

"The cycle begins in autumn with fields being tilled and planted," explains Tamera. "Seeds are then put to bed in fertile ground waiting for winter to blanket them with a sheltering snow. When spring arrives sprouts emerge, the fields grows lush and green with plants reaching up toward the wide, blue sky with cotton ball clouds drifting across its expanse. Summer brings rustling, brittle stalks filled with kernels to be harvested and

stored for the future. The wheat, the farm and Mother Nature provide sustenance not only for my family but for people all across the globe. This sustenance comes not only in the form of nutrition but in the contentment of a life well spent."

DATES: Exhibit: July 25-Sept 17; Reception, Sat, July 28, 11-3pm. Refreshments will be served. LOCATION: The Winthrop Gallery, 237 Riverside in downtown Winthrop. HOURS: Open every day, 10am to 5pm. INFO: 509-996-3925, winthrogallery.com.

TWISP WELCOMES THE NEW OLD TIME CHAUTAUQUA!

PARADE - NOON

Come watch (and join?) the marching band, jugglers, stilt walkers and more as they parade through Twisp bringing their unique brand of joyful performance.

It begins at the Methow Valley Community Center at the Farmer's Market, through TwispWorks and up Glover Street.

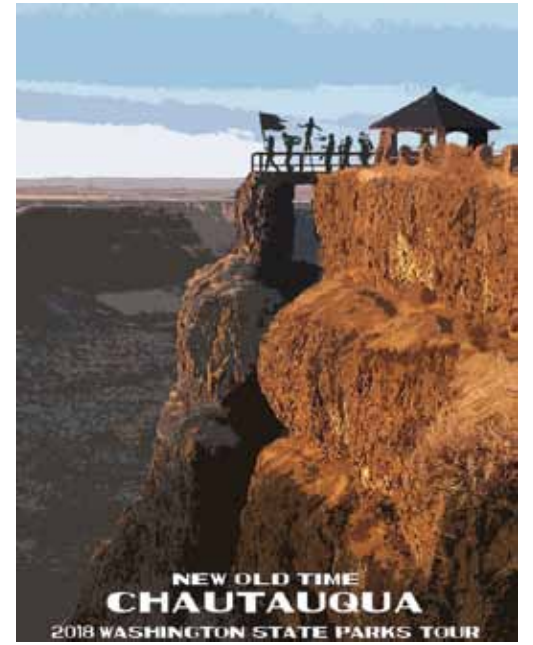
WORKSHOPS - 1-4PM

Multiple 30 minute workshops throughout TwispWorks campus and possibly up Glover Street. Learn things like rope making with Indian Hemp, wool spinning, basket weaving, aerial arts, juggling and much more!

MAINSTAGE SHOW - 7PM

At the Community Center in Twisp, WA. From the jugglers to magicians, folk singers to trapeze artists, tap dancers to hula hoopists, and a 30 piece band, the New Old Time Chautauqua main stage shows are wonder-filled events the community will rave about for years to come.

DATE: Sat, June 23. TICKETS/INFO: chautauquatwisp.com



NOAH CONSTRUCTOR LLC.
509-341-9292
www.noahconstructor.com
LIC# NOAHCCL858K2

Brown's Farm

Complete Private Cabins

Jeff & Alicia Brown
887 Wolf Creek Road, Winthrop WA 98862
(509) 996-2571 www.methownet.com/brownsfarm

WasteWise

WasteWise is committed to the responsible management of the Valley's waste stream – offering creative garbage & recycling solutions for your home or business in the Methow.

509-997-8862 • WASTEWISEMETHOW.COM

Cascadia Music Presents
George Winston
in Concert
Tuesday September 25, 7:00PM
Methow Valley Community Center

tickets \$30 at the door
\$25 at brownpapertickets.com
www.cascadiamusic.org

HANNAH VIANO'S PAPER ART: MAKING THE CUT

By Marcy Stamper, Photography by Sol Gutierrez



Hannah Viano knows it's a rare privilege to, as she puts it, "think of my favorite things in life and mush them together – what job could they be?" and then actually do that job. It's even rarer when that job combines visual art, alternative modern dance, and natural-history education.

But Viano, an artist who makes everything from beavers to seascapes to octopi by slicing shapes out of black paper, has merged her diverse interests into a flourishing art career.

Cutting long, sinuous contours out of large sheets of paper with an X-ACTO knife is actually very much like dance, said Viano. "Getting smooth curves – that's my favorite part, my dance part. That's why I can't get away from waves and clouds that are swoopy," she said.

Pointing to an arcing wave in the paper, she said, "You make this move and it stays in the art. Everyone will see this gesture. People say they love the movement in my work."

Viano draws on dance-like movements to create flowing curves and ripples that can be several feet long. "The expression of movement comes out more if it's all one gesture," she said, insisting, "It is more forgiving than it looks."

In addition to the big gestures, Viano removes tiny bits of paper with her knife to create details like leaves and animal tracks or to add depth or texture.

Making things by hand – like the sketches Viano makes in the field to remember a scene or to generate ideas – indelibly imprints the image. "It transfers the memory into our body with hand movements," she said.

Viano, who grew up on the coast of Maine in a family devoted to sailing (she describes her parents as "boat hippies"), has also integrated her life-long experience with boats into her art career.

While today all these interests have come together, they were once distinct paths. In fact, Viano didn't devote herself to visual art until after her son, now 9, was born.

Viano had been working for the outdoor-education organization Outward Bound, which meant being on expeditions for months at a time to teach on boats or in the mountains. "I always did art, but not as a business venture," she said. But going off to work for three months on a boat halfway across the world was no longer practical after becoming a mother. "It

was a clean-slate moment," she said.

Viano was quite intentional about figuring out what to put on that slate. She took a choreography workshop, tried to find a publisher for children's book she'd written (but not illustrated), and took a class in cut-paper art. While the process didn't immediately clarify her decision – she still loved all of them – the cut-paper art took off.

Viano soon had a solo exhibition, sold every piece in it, and started to get commissions.

Discovering cut-paper art was a revelation for her. "When I started doing this, it felt very different. There was so much to explore and learn. It drew me – it was something I could do with my hands, and with simple tools and no weird chemicals," she said.

She also liked the crisp, modern graphic images and the links to historic traditions of cut-paper and stencil art from around the world.

Viano had always loved art, and even thought about going to art school, but her high school was almost exclusively oriented to academics. "I had parental support, but no school support," she said. So she



turned to something she knew and loved, and started working on boat crews when she was still in her teens. She got her captain's license at age 19.

All those years of using nature to teach and spur the imagination still inspire her art. Viano's first book grew out of a grant-supported project she developed to teach kids about reading, nature, and art.

She'd been volunteering at her son's preschool and found herself looking at the illustrated alphabet tacked to the wall, with its standard, uninspiring images from balls to zebras. Viano wanted to make an alphabet that would highlight flora and fauna of the Northwest, like anemones, queen bees, and salmon. The grant paid for her to hand-silkscreen the alphabets, which were

donated to 30 schools and libraries in Seattle, and for her to lead workshops at some of the schools.

The project ultimately became Viano's first book, *S is for Salmon*, which features Viano's illustrations and her brief descriptions. She followed that up with *B is for Bear*, a natural alphabet for plants and animals from other parts of the country.

Another of Viano's projects, "Wonder In The Woods: An artful identification of 6 Northwest trees," was conceived as a way to encourage people to notice both nature and art. "For someone who doesn't go into an art gallery or carry a tree guide – how do you catch the attention of people who are not in either group?" she said. The folded cards, which were available for free at parks and nature centers around Seattle, contain stylized depictions of trees such as Douglas fir, big leaf maple and Pacific madrone.

FLUID FORMS AND BOLD GRAPHICS

Viano's artwork is primarily line and form. It makes the most of the bold, graphic contrast of positive and negative space, usually in black and white. She makes abundant use of concentric circles and undulating lines to convey details and movement. Naturally, there are lots of water scenes, with fish and whales and boats,



but also depictions of mountains, deer, icebergs, and wolverines.

Viano occasionally layers sheets of black paper or different shades of white to add subtle texture or suggest atmospheric conditions like fog. "I don't want to lose the contrast of the black and white, because I love that so much," she said.

Some projects incorporate color, usually a limited palette that highlights the exuberance of her meandering lines and shapes. "I've always been shy of color, although I've loved it," she said.

She's published four books and is nurturing ideas for others, including a "very Methow story" about a family enjoying the snow.

Viano is also finding more opportunities for collaborations with other artists, where her designs are transferred to metal or clay.

Viano is currently working on a series of 10 panels that feature wildlife such as herons, beavers, and salmon for the Methow River Collaborative, a new initiative by Methow Arts, Methow Salmon Recovery Foundation, the Department of Ecology and the Bureau of Reclamation. The artwork, which will be etched on steel by local metal artist Tim Odell, will be installed at locations around the valley, both along rivers and at places in town to direct people to the water.

Viano has also done several public art projects. She designed the art for seating and fixtures for the

TwispWorks plaza and has a commission for a building in Seattle. She also recently completed artwork that was transferred to metal and installed along the Methow Trails network. "It's fun for work to be big and permanent – paper seems ephemeral in its own way," she said.

Viano hopes to find more ways to combine her favorite things by working with scientists to share their research in a way that motivates everyone. There's a role for artists, dancers, and musicians to catch the attention of people who think they aren't interested in science, she said. "There's a lot of room in science for all different ways of interpreting and presenting information," she said.

When your work blends art, science, and movement, there's no shortage of possibilities. "I actually made a list the other day that's titled 'Balls in the Air,'" said Viano.



Hannah Viano's studio is in the South Warehouse (Building 10) at TwispWorks

READ ARTICLE/SEE PHOTOSHOOT @ methowarts.org/hannah-viano

BE BRILLIANT—DRINK COFFEE

HANDCRAFTED COFFEE FOR COFFEE LOVERS

Always Good!

BLUE STAR
COFFEE ROASTERS
BLUESTARCOFFEEROASTERS.COM



DOOR NO. 3 PRINT STUDIO

Come find Laura Gunnip at the Methow Valley Farmer's Market and Robin Doggett at Door No. 3 Print Studio on the TwispWorks campus on Fridays + Saturdays.

At Door No. 3 Print Studio, collaborative art and design duo Laura Gunnip and Robin Doggett are committed to imprinting place, connection, joy and challenge into everyday objects and creative process. Door No. 3 produces a unique line of hand printed goods, offers custom letterpress and design services, and helps students of all ages engage in the radical act of creative self-knowledge through letterpress and printmaking classes. Located in the small town of Twisp, WA (pop. 919), Door No. 3 is a hub of solidarity for artists, hosting exhibits and events that connect rural people to the magic and courage of art.

CONTACT/LOCATION/HOURS: Learn more about Door No. 3 Print Studio. Visit them on the TwispWorks campus or @ www.doorno3.com. (Artwork and photos courtesy Door No. 3 Print Studio.)

[THE METHOW VALLEY CHAMBER MUSIC FESTIVAL]

TUNING THE CHAMBER MUSIC FESTIVAL PIANO IS 'A FORMIDABLE RESPONSIBILITY'

When Curt Spiel sets out to tune the Steinway grand piano at the Methow Valley Chamber Music Festival, he can avail himself of a nearly infinite number of adjustments for those 88 keys.

Most keys allow 39 different adjustments, although the top 28 notes, which don't have dampers, have a mere 34 options. And most notes have multiple strings – 236 in all – which Spiel needs to tweak so they vibrate in unison.

Fortunately, Spiel knows these Steinways – and how they respond to weather and humidity – intimately. While there are high-tech machines and smartphone apps for tuning, Spiel, like most registered piano technicians, relies primarily on his ears. The machines come very close, but they make small errors, he said.

"You can do it by math given certain parameters, but when you put paper calculations into a real piano, the physics don't work," he said. Modern pianos are based on a design developed in the late 19th century, and Spiel still uses the first written instructions for tuning from 1919.

Tuning for the music festival, with its outdoor setting and mix of performers, presents unique challenges. Some musicians want customized tuning – Spiel recalls a bassoon soloist who wanted micro-variations in the relationships between notes.

The festival is in a barn, where temperatures and humidity fluctuate throughout the day. As the humidity rises, the action on the piano swells, making the piano sharp. Hotter temperatures drive pitches flat. But none of this happens in a consistent way across the keyboard, said Spiel.

"It's a formidable responsibility – the piano can't be badly out of tune," he said. Still, performers tend to be generous because they know an outdoor venue can wreak havoc on the piano, he said.

After almost two decades with the festival, Spiel is considering winding down. Omak-based piano tech Jonathan Owens will tune the piano for some festival concerts this summer. "I want to do other things that time of year," said Spiel, who's based in the Seattle area and will continue tuning pianos there.

He'll also remain deeply involved with music, playing the piano casually and listening avidly. Classical music is his first love – Spiel remembers listening to it on AM radio when he was just four years old. "Piano tuning is a learned and developed skill – it's not that I just have a knack for it," said Spiel, who still devours the monthly technical journal for tuners. "Pianos are fussy little animals." READ FULL ARTICLE @ www.methowarts.org/curtspiel



(Photo by Steve Mitchell.)

Bruce Morrison
www.brucemorrison.com

Carving
SIGNS • DOORS • MANTELS • ORNAMENTS

(509) 429-7726 - PO Box 1043 Twisp WA 98856

CINNAMON TWISP BAKERY

Good Energy Food for the Whole Family!

Open Daily 6-3. Organic Grains & Flours!
Organic Espresso too!

116 N Glover Street Twisp WA 98856 509.997.5030
Free Internet Access!

ICICLE BROADCASTING, CO.

KOHO 101.1 FM **Z94.7 COUNTRY'S GREATEST HITS** **KOZI community radio 100.1FM • 82.5FM • 106.9FM • 1730AM**

HOMETOWN RADIO
509-682-4033 • 123 East Johnson Avenue • Chelan, WA 98816

SUPPORT THE NORTH CASCADES SMOKEJUMPER BASE
DOORS OPEN @3PM | JUNE 16TH 2018
JOHN DORAN'S RANCH | JUST NORTH OF TWISP CITY LIMITS
FREE ADMISSION & OPEN TO THE PUBLIC

NORTH CASCADES SMOKEJUMPERS
1939

30TH ANNUAL

LET'S KEEP OUR VALLEY GREEN AND OUR RIVERS CLEAN MUSIC FESTIVAL

LIVE MUSIC FROM 4:00-10:00PM
TERRY HARGREY AND THE LAST DUTY CALLED
DANIEL MURPHY & THE AXIS OF DISSENT
SKY HISS - BAYVILLE - MEGHAN COLLEEN & HER FABULOUS BACK UP BAND - LAURA LOVE & THE FAMILY DOG - DAN MAHRE OF INLAND FOLK - AND MORE!

In addition to the music festival, take a tour of the Traveling Smokejumper Museum located at TwispWorks 12:00 to 3:00

Rendezvous Huts

rendezvoushuts.com
509 996 8100

Operating under a special-use permit in the Okanagen-Wenatchee National Forest

ROOM ONE
www.roomone.org
509.997.2050



PIPESTONE SUMMER MUSIC CAMP

The Pipestone Music Camp is a fun, high energy, intensive week of music education held at the Methow Valley Community Center. It runs Monday through Friday, July 30-August 3, and culminates with a public performance in the Community Center gym on Friday, August 3 at 4pm.

SECTION 1, 9:30-2PM: The String Orchestra section is designed for children eight and older who have played at least one year and competently read music in first position.

SECTION 2, 12:15-5PM: The Chamber Music section is designed for students who have played a minimum of three years and read music fluently. This portion is open to strings, piano and guitar.

The music camp faculty is comprised of accomplished local and visiting musicians and dedicated teachers.

Pipestone Camp organizers schedule the camp during the Methow Valley Chamber Music Festival. In collaboration with the Festival, Pipestone students are offered the opportunity to work with musicians in the Fellowship Quartet and to attend a Festival concert.

DATES: Mon, July 30-Fri, Aug 3. String Orchestra Camp 9:30-2pm (designed for children eight and older who have played at least one year and competently read music in first position.); Chamber Music Camp, 12:15-5pm (strings, piano and guitar and designed for students who have played at least one year and competently read music in first position.) **FEE:** Tuition for the week is \$250 for partial day enrollment and \$350 for full day. **REGISTRATION DEADLINE:** Deadline for registration and payment is July 1. Partial scholarships are available. **CONTACT:** Pam Hunt, 509-997-0222 or cascadiamusic4u@gmail.com for registration forms.

[THE TOM ZBYSCZEWSKI CHILDREN'S THEATER AT THE MERC PLAYHOUSE]

SUMMER MUSICAL THEATER CAMP PERFORMING DISNEY'S THE LION KING, KIDS

Join us for a fun, active, and exciting week in which campers will all receive a part in Disney's The Lion King, Kids while polishing their skills for two performances at the end of the week.

Directed by Megan Hicks and Kathryn Stahl, Musical Theater Camp focuses on theater performance for kids with training in acting, singing, and dancing. Campers learn backstage fundamentals such as set building and costuming.

AGES 8 - 10 YEARS

10am-4pm, Monday through Friday with final performances on Friday, August 10, 4pm and Saturday, August 11, 2pm. \$200

AGES 11 - 14 YEARS

9am-4pm, Monday through Friday with final performances on Friday, August 10, 5pm and Saturday, August 11, 3pm. \$250.

DATES: Camps, Aug 6-11. See above for times camp info depending on age. **FEE:** \$200/ ages 8-10 years. \$250/ages 11-14 years. \$75, non-refundable deposit is due at registration. Partial scholarships available. Public performances on Fri, Aug 10 and 11 are open to the public, admission by donation. **REGISTER:** 509-997-7529, or info@mercplayhouse.org. Call now to reserve your spot! Presented through special arrangement with Music Theatre International (MTI). All authorized performance materials are also supplied by MTI. www.MTIShows.com



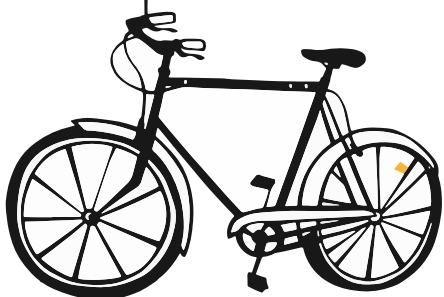
join us for a bicycle-inspired

METHOW ARTS FESTIVAL

WED, JULY 4TH, 11:30-4PM

TWISP RIVER PARK

CASH/CHECK ONLY!

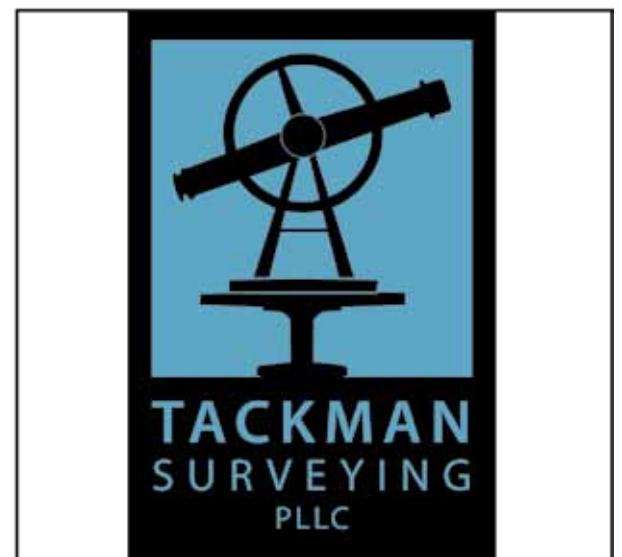


METHOWARTS.ORG



109B GLOVER ST N
POB 284
TWISP, WA 98856

509.997.0255 cell
donna.keyser@gmail.com



119 Glover Street in Twisp
509.996.3409

tackmansurveying.com



CASCADIA MUSIC PRESENTS GEORGE WINSTON

Renowned pianist George Winston returns to the Methow Valley to perform at the Community Center in Twisp Tuesday, September 25.

George grew up mainly in Montana, and spent his later formative years in Mississippi and Florida. During this time, his favorite music was instrumental Rock and R&B. Inspired by Jazz, Blues and Rock, George began playing organ in 1967. He switched to the acoustic piano after hearing recordings by the legendary stride pianists Thomas "Fats" Waller and the late Teddy Wilson. In addition to working on stride piano, he also came up with this own style of melodic instrumental music on solo piano, called folk piano. In 1972, he recorded his first solo piano album, BALLADS AND BLUES 1972, for the Takoma label.

George has released ten other solo piano albums including several that were platinum sellers such as AUTUMN, WINTER INTO SPRING, and DECEMBER. His latest solo piano release is LOVE WILL COME-THE MUSIC OF VINCE GUARALDI, VOL. 2, which features compositions by the late jazz pianist, including pieces from the Peanuts' TV specials. His most current album SPRING CAROUSEL-A CANCER RESEARCH BENEFIT was released in 2016.

George also plays harmonica and solo guitar. He is recording the masters of the Hawaiian Slack Key guitar for an extensive series of albums for Dancing Cat Records. Slack Key is the name for the beautiful solo fingerstyle guitar tradition, unique to Hawaii, which began in the early 1800s and predated the steel guitar by over half a century. This concert promises to be a special treat that you won't want to miss. The event will also benefit the Cove Foodbank in Twisp.

DATE: Tues, Sept 25, 7pm. TICKETS: \$30/door, \$25/advance at brownpapertickets.com. LOCATION: Community Center in Twisp. INFO: 509-997-0222, www.cascadiamusic.org.

[METHOW ARTS ALLIANCE]

METHOW RIVER COLLABORATIVE BRIDGES ART, WATER, COMMUNITY AND LEARNING



Soon you will notice ten unique artworks sprinkling the Methow Valley. A bear, an owl, a deer, a salmon. These creatures will be a part of the community for years to come.

Coordinated by Methow Arts, the Methow River Collaborative is a project of the Department of Ecology, Methow Salmon Recovery Foundation and Methow Arts Alliance. True to Twisp, WA the project uses locally made artwork to connect the very things we value about where we live: the river, nature, our community, art, stewardship and learning.

In March the project commissioned artist Hannah Viano to design ten artworks (stations) which capture these elements. Tim Odell worked with Viano to fabricate the pieces. "Our goal is to link people to place," says Amanda Jackson Mott, director of Methow Arts. "We want community members to be enticed by unique artwork and want to get closer and engaged, to learn more about our sense of place and our Valley." Brochures, maps, a webpage (www.methowarts.org/river) and ongoing activities for all ages will link to the ten stations. So keep an eye out for an owl, blue heron, bear, deer, beaver and other native creatures and fauna of the Methow. And don't forget to check out the website to find out what surprises the project has in store.

INFO: www.methowarts.org/river, Methow Arts, info@methowartsalliance.com.



(Artwork links viewers to other spaces to learn and interact with efforts in water quality and salmon recovery.)

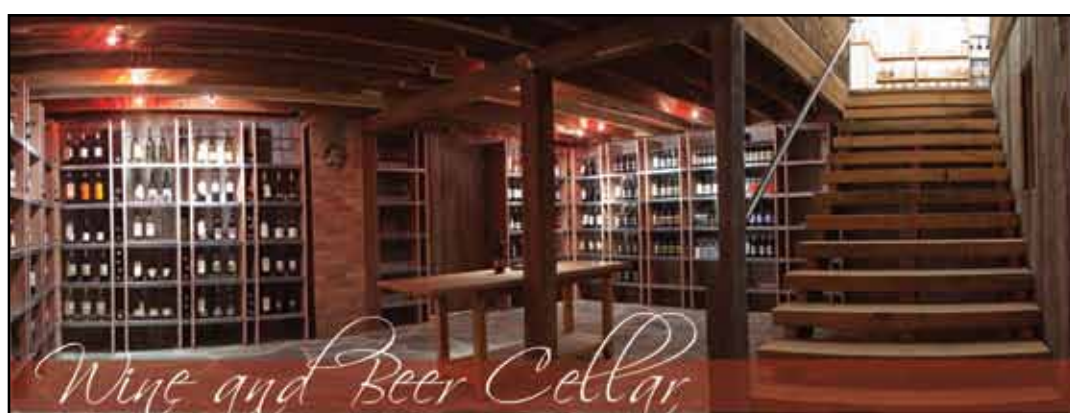
CULTIVATE
A LITTLE BIT OF EVERYTHING GOOD

TheMazamaStore.com
50 LOST RIVER ROAD • EVERYDAY 7AM-6PM • 509.996.2855

Laura Aspenwall, Ouzel Glassworks
227 Wolf Creek Road, Winthrop
(509) 996-3316
www.ouzelglass.com

CULLER = STUDIO

cullerstudio@gmail.com = twispworks campus, twisp, wa



www.gloverstreetmarket.com 124 N Glover St, Twisp

Juice Bar
Breakfast & Lunch
Natural Foods
Local Produce
Bulk Foods
Bulk Herbs & Spices

glover street market

wine pours Saturdays 2 - 6pm

WHO'S WHO IN TWISPPWORKS' ARTIST STUDIO SPACES?

BUILDING 1 – THE GATEWAY BUILDING

A love of nature and light is captured in the artwork of [Mary Appfel](#). Her work portrays nature through enchanted realism using paint and collage on canvas and woodblock. Shivelight Studio is open by appointment.

[Alchemy on Demand](#) is a full service creative agency with a passion for clients who are creating a world for everyone.

[EVRYBDY](#) is a nimble creative team dedicated to helping good people and good brands be at their best.

BUILDING 4 – LINCOLN STREET GARAGE

Glassblower [Sam Carlin](#) creates unique and colorful tumblers, vases and more at Lucid Glassworks. Glass blowing demonstrations most weekday mornings.

BUILDING 6 – THE TREE COOLER

Studio and public works artist [Perri Howard](#) explores the relationship between human perception and sense of place from her studio on the TwispWorks campus.

BUILDING 7 – THE GREYSHED

[eqpd](#) takes everyday gear and runs it through their filter to create more useful, versatile and durable objects for living including LASTBAGS, Totes and Utility Bags.

BUILDING 8 – THE ROAD SHOP

[Steve Ward](#) fuses metal and paint techniques to create fine art, furniture and commercial art.

BUILDING 9 – THE BERNARD HOSEY FOUNDERS BUILDING

[Door No. 3 Print Studio](#) offers handprinted goods including letterpress, silkscreen and more.

[Your Space@TwispWorks](#) is a flexible space where artists, educators and community groups hold a variety of classes and events

BUILDING 10 – SOUTH WAREHOUSE

The art of good beer – Stop by the [Old Schoolhouse Brewery Taproom](#) if touring the campus leaves you thirsty!

Stop by the studio of [Hannah Viano](#) to see the amazing paper cut art of this nationally known author, illustrator and adventurer.

Sharing the studio with Hannah is [Sherry Malotte](#) of Methow Photo Arts, a photographer and artist who finds magic in working with animals, nature, abstract imagery and architecture.

Textile artist [Sara Ashford](#) works with plants and other materials to create natural pigments which she applies to various forms of fine and functional textile art at [Culler Studio](#). Many of the plants used in her dyes are grown on site in the demonstration natural dye garden adjacent to her studio.



BUILDING 11 – SOUTH SHED

At [Glitter n Grit Silversmith](#), [Sarah Jo Lightener](#) and [Kelleigh McMillian](#) create one of a kind jewelry incorporating hand pulled silver and local stones and offer classes to the public.

[Methow Metalworks' Jerry Merz](#) creates functional metal art for garden and home, from trellises and arbors to handrails, gates and fire pits. Watch Jerry work the forge in his studio or register for one of his incredibly popular open forge nights.

[Studio B](#) is home to [Batya Friedman's](#) hand-carved stone sculptures.

[Patrick Hannigan's](#) birdhouses really are for the birds. At [Nice Nests](#) he creates species specific nesting boxes for a huge variety of local birds, hawks, owls and bats.

BUILDING 12 – SOUTHWEST BAY

[Main Events Rentals and Catering Kitchen](#) – [Kathy Borgersen](#) of [Sunflower Catering](#) operates her catering business out of this commercial kitchen on campus. She also rents the kitchen for community or private use for events and classes.

THE PLAZA@TWISPPWORKS

The [Plaza@TwispWorks](#) is a 14,000 square foot outdoor space that includes and generous lawn and walkways surrounded by native plants, a splash pad for kids to play and a center stage.

THE FRONT LAWN @TWISPPWORKS

The Front Lawn@TwispWorks is home to [FORK!](#) The Valley's first food truck! Open Wed-Fri, 11am-3pm and Saturdays from 1-3pm.

LOCATION: TwispWorks, Twisp, WA. CONTACT: 509-997-3300, twispworks.org

WILLOW BROOK FARM
Real Food for the People - Carlton, WA

509-590-5155 cell
509-997-9077 farm

Follow us: Instagram @willowbrookorganics
Facebook @willowbrookcarlton willowbrookorganics@gmail.com

ASPEN GROVE
HOME. KITCHEN. INSPIRATION.
Winthrop, Wash.

aspengrovehome.com | 156 Riverside Ave. | (509) 996-2009

Swanson Woodcraft
Cabinetry & Custom Furniture
Rick Swanson 509.996.2297
rick@swansonwoodcraft.com
www.swansonwoodcraft.com



Brix
WINE BAR & BOTTLE SHOP
Featuring holiday specials and quality wines from around the globe.
229 RIVERSIDE AVE SUITE G, WINTHROP, WA | 509.996.3229

WINTHROP RHYTHM AND BLUES FESTIVAL

Located at the Blues Ranch on the Methow River in Winthrop, Washington, the Winthrop Rhythm & Blues Festival is a three-day event packed full of exciting national and regional entertainment for all ages.

2018 LINE UP:

LOS LONELY BOYS
 CALIFORNIA HONEYDROPS
 SAMANTHA FISH
 LYDIA PENSE & COLD BLOOD
 PIMPS OF JOYTIME
 TOO SLIM & THE TAILDRAGGERS
 THE WELCH LEDBETTER CONNECTION
 CURTIS SALGADO/ALAN HAGER & FRIENDS
 CURLEY TAYLOR & ZYDECO TROUBLE
 DIRTY REVIVAL
 BRETT BENTON & GORDON TOWNSEND
 'RIDIN' WITH THE KING' BB KING TRIBUTE
 STEELE WHITE GOSPEL HOUR

The Blues Ranch is the perfect setting for one of Washington's greatest blues festivals. The Winthrop Rhythm & Blues Festival is the largest and longest running festival in the state of Washington. Over eighty thousand people have attended this event in the past twenty-nine years.

Past festivals have featured such national artists as Robert Randolph & the Family Band, Johnny Winter, Royal Southern Brotherhood featuring Cyril Neville and Devon Allman, Allen Stone, The Holmes Brothers, Roy Rogers, Janiva Magness, Ivan Neville's Dumpstaphunk, Too Slim & the Taildragers, Jimmie Vaughan, Booker T., Commander Cody, Little Feat, Mavis Staples, Bo Diddley, JJ Cale with Christine Lakeland, Bobby Rush, Susan Tedeschi, Koko Taylor, The Fabulous Thunderbirds, Tower of Power, Delbert McClinton, Elvin Bishop, Little Milton, Tommy Castro, Eric Burdon, Chubby Carrier, Charlie Musselwhite, The Blasters, Buckwheat Zydeco, James Harman and many others. The festival has rightfully become a destination event with fans traveling from all over the world to enjoy and celebrate the Blues.

There is on site camping, food and craft vendors, portable showers, and a beer garden.

DATES: July 20, 21, 22. LOCATION: The Blues Ranch, just north of Winthrop, WA. CONTACT: winthropbluesfestival.com
 TICKETS: \$110/weekend pass, www.tickettomato.com/event_group/211/winthrop and more options for parking and camping.



JANET FAGAN BLOCK PRINTING CLASS



The Confluence Gallery & Art Center is excited to offer its summer art class from the multitalented Janet Fagan who will teach block printing July 28-29. Janet Fagan will teach students general wood carving techniques, how to work with and layer different materials when working in mixed media, and how to plan efficiently for a mixed media piece using many different materials.

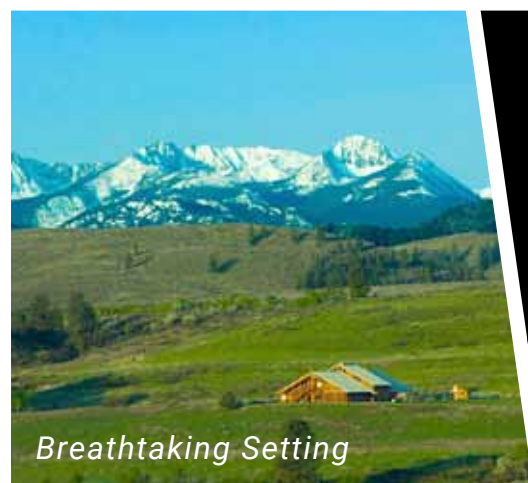
Students will learn step-by-step to draw, carve and print a relief print on pine board and incorporate prints into mixed media paintings as a collage element.

Janet Fagan is always searching for new ways to combine her two loves – painting and printmaking, because it is within the contrast of these two approaches to image making that she finds the truest expression of her heart's response to life.

Janet's love affair with printmaking began 30 years ago at the Pennsylvania Academy of Fine Arts in Philadelphia, where she studied woodblock printing with Dan Miller. She now continues to create block prints and uses the printing process in her mixed media pieces as well. Janet has taught drawing, painting and printmaking classes for the past

25 years including classes at the Gage Academy, Seattle Art Museum, and the Frye Museum in Seattle. Read full article @ hmethowarts.org/janet-fagan

DATES: July 28-29. 10am-1:30pm each day. FEE: \$150. LOCATION: Confluence Gallery. INFO: 509-997-ARTS.



Breathtaking Setting



Unique Concerts



Thrilling Artists



TWISPPWORKS.ORG

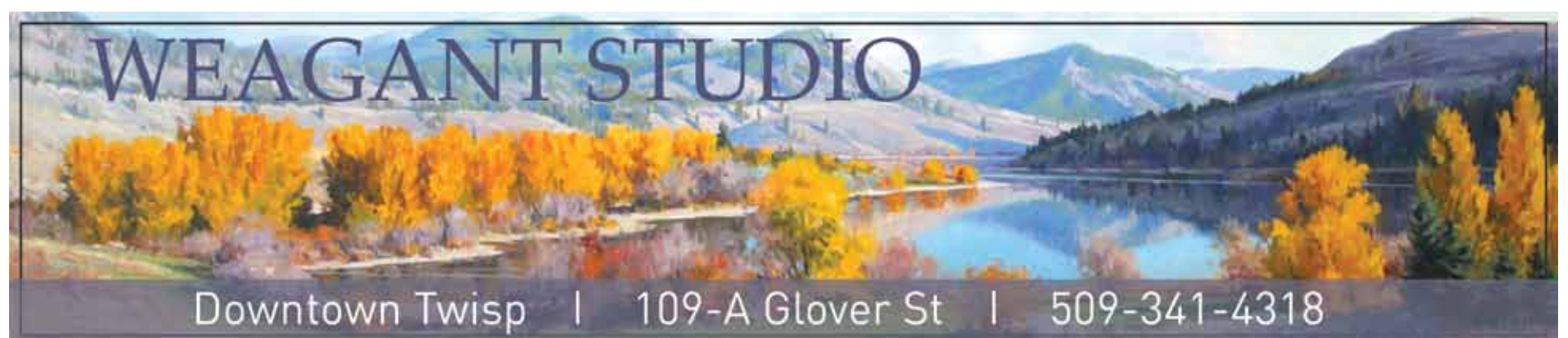


WHERE PEOPLE, PLACE AND IDEAS
 COME TOGETHER.

EXPLORE · CREATE · SHOP · GATHER

502 S. GLOVER STREET – TWISP, WA 98856
 509-997-3300

THIS AD FUNDED IN PART
 BY THE OKANOGAN COUNTY
 HOTEL/MOTEL LODGING TAX FUND



[WINTHROP GALLERY]

PETER BAUER, NATURE PHOTOGRAPHER

When Peter Bauer was in middle school, his brother built a darkroom in the family's basement. This was the start of his life-long fascination with photography. He found a compelling, personal reward in attempting to capture something beautiful, then working with chemistry to bring the image to fruition. But, spending hours in the darkroom became impossible when working full-time and raising a family, but that didn't stop his interest in photography. His next medium was Kodachrome resulting in many boxes of slides jumbled in storage boxes. In 2003 he purchased his first digital camera. He was hooked once again.

His subjects have always been nature and outdoors scenes. But during a trip to Argentina in 2012 when he visited Laguna Nimez, a bird refuge in El Calafate, his interests switched from scenic to wildlife, primarily birds. He purchased a "bird lens", a Canon 400mm f4 DO, and struggled to get sharp pictures with the narrow range of focus necessary to capture birds in the wild. Then he took a five-day photography workshop with Paul Bannick, a well-known photographer, lecturer, and author of Owl: A Year in the Lives of North American Owls. With good instruction, he was ready to get at it.

Since 2013, Peter has taken thousands of pictures of birds, as well as a smaller number of other animals including seals, lizards, deer, elk, and Costa Rican rodents agouti and coti, not to mention iguanas, otters, and squirrels. But birds are a particularly favorite subject matter for him. You can see Peter's photographs of birds at the Winthrop Gallery where he is one of the gallery's newest members. You can also read his blog to learn more about his interest in photographing birds and his process in general at www.bauwa.wordpress.com. You might find particular interest in his entry titled "American Safari #6".

READ MORE @ <http://www.methowarts.org/peter-bauer>. LOCATION: The Winthrop Gallery, 237 Riverside in downtown Winthrop. HOURS: Open every day, 10am to 5pm. INFO: 509-996-3925, www.winthropgallery.com.



STUDENTS WORK WITH WRITERS IN YOUNG WRITERS' CONFERENCE

Eight years ago, the Methow Valley Elementary School began a strong collaboration with Methow Arts on an ambitious project: a Young Writers' Conference (YWC)—a day-long series of workshops that engage students in writing activities, including attending small-group workshops of their choice. The YWC has grown in subsequent years to include workshop presenters like authors, artists, storytellers, actors, scientists, journalists, and others who use writing in their personal and/or professional lives.

The goals of this conference are to provide students with opportunities to:

- View themselves as writers and feel a part of the writing community
- Hear life stories from individuals who have chosen writing as a career
- Observe techniques and skills used by practicing writers
- Integrate art, music, performance, and storytelling into the writing process

The YWC kicks off with a Keynote Speaker and Methow Valley's very own award-winning author/illustrator Erik Brooks. The conference itself brings an incredible array of talent into the school, with community members such as songwriter Danbert Nobacon, editorial cartoonist Tania Gonzalez Ortega, newspaper owner/editor Don Nelson, storyteller Dayton Edmonds, and author Shannon Huffman Polson presenting workshops.

at the close of the conference, students gather in small, multi-age groups to share a piece of original writing and reflect on their learnings from the conference. With journals in hands they then depart the school, with their minds open to all the opportunities writing offers. READ MORE @ www.methowarts.org/young-writers-conference18/



Winthrop GALLERY
www.WINTHROPGALLERY.COM
PO BOX 272 WINTHROP WA 98862 509-996-3925

a bicycle-inspired
METHOW ARTS FESTIVAL
WED, JULY 4TH, 11:30-4PM

TWISP RIVER PARK
METHOWARTS.ORG
CASH/CHECK ONLY!

EXERCISE *your* CREATIVITY



METHOW CYCLE & SPORT

THE VALLEYS ONE-STOP SHOP FOR CYCLING, SUP'S, TRAIL INFO, NUTRITION AND MORE

SALES • SERVICE • REPAIR • GEAR • MORE

29 HWY 20 • WINTHROP, WA 509.996.3645
METHOWCYCLESPOUT.COM OPEN DAILY



METHOWHOUSEWATCH.COM
security visits, property maintenance, cleaning
509.996.3332
METHOHW847DT



• Mobile Showroom
• Personalized Services
• Computerized Kitchen Design
• Corian & Granite Countertops
• Wholesale Appliances

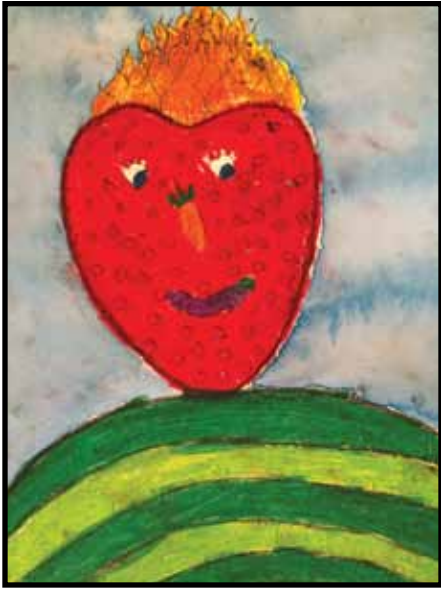
Alpine DESIGNS 2000, Inc.
Affordable Cabinetry
Serving the Methow Valley for 25 Years.
509/996-3771
Marc Robertson alpinedesigns@methownet.com

RIVERSIDE PRINTING + design

Wide format printing Business Cards
Posters Postcards
Brochures Laminating
and more!

email projects to:
riversideprinting@methownet.com

173 Riverside Ave #5, Winthrop
509.996.3816



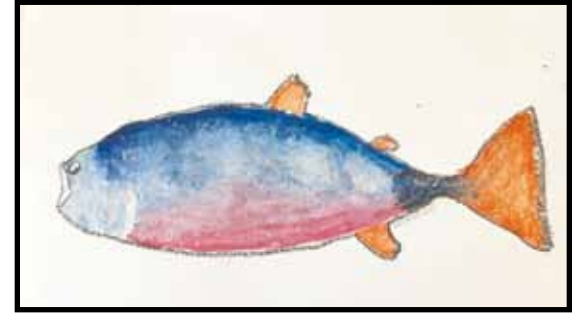
The original artwork of local students will be installed at Three Rivers Hospital in Brewster throughout the next 6 months, thanks to a new partnership between the hospital and Methow Arts. Three Rivers Hospital staff have committed to annual funding of a collaboration in which students in four elementary schools create art through Methow Arts' artist-in-residence program, and then hang their work as an exhibit for one year at the hospital.

The installation will launch in July with two collections and an open house held on August 16th at the hospital for student artists, their families and community members.

This summer's installations are created by students from Bridgeport and Brewster Elementary Schools.

The first installation, "Veggie People", are portraits inspired by the artwork of 16th century Italian painter Giuseppe Arcimboldo and created by Bridgeport 4th grade students with teaching artist Margaret Kingston.

The second installation features Salmon paintings, created by Brewster 4th grade students with teaching artist Annie Venable as part of their "Power of River" unit.



Following this initial installation, subsequent art education projects in the Methow Valley and Pateros will result in more student artwork for display. Artwork will be rotated annually, curated and maintained by Methow Arts. The public is invited to visit Three Rivers Hospital to view the artwork. An open house will be held on August 16, 5-6pm at Three Rivers Hospital in Brewster, WA. Read more about this collaboration @ methowarts.org/three-rivers-hospital



[CONFLUENCE GALLERY]

WHY ART MATTERS: SMALLTOWN ECONOMICS

By Rose Weagant Olcott

To be able to say in all honesty "I am an artist" is no small thing. Ask most folks in metropolitan areas what they do for a living, and you'll often get an answer that's likely above our analog heads. But in the Methow, it's different. You can walk down Glover Street in Twisp and greet a ceramicist, a sign maker, a jeweler and no doubt some tech whiz who's designing the next big thing in sustainable home design. This valley is made up of these creative characters for one main reason: Art not only thrives here, but it's also a sustainable industry and keeps folks in firewood all winter long. Art begets art and art sales beget art sales and soon you've got this cool little art pocket in North Central Washington.

Every dollar you spend is visibly meaningful for the local economy. Its distribution isn't something digital or ineffable. There are quantified reasons that we keep local. For every dollar spent, it becomes bacon, eggs and healthcare for the artists and their families.

(Artwork by Chris Fackler-Lowery. Photo by Rose Weagant Olcott.)

HERE'S WHAT HAPPENS WHEN YOU BUY LOCAL ART: You raise artists. More local art gets made. You support creative industry. Adding art to your own personal collection does so much more for a small community than you think. You validate the arts. There's a strange thing that happens when folks stop purchasing a particular thing: It stops being made. It stops happening. It stops being taught in school, and then art becomes an analog relic collecting dust in attics. But with every single art purchase, no matter how large or small, you're giving the art industry life. READ FULL ARTICLE ONLINE @ methowarts.org/why-art-matters

Laura Aspenwall Ouzel Glassworks
227 Wolf Creek Road, Winthrop
(509) 996-3316
www.ouzelglass.com

Art That Kicks Butt
Now Buy Online!
Ginger Reddington
H: 509.997.2721
C: 509.995.2471
www.ponderosastudio-gingerreddington.com

The Merc Playhouse
Connects curious seekers through live theater.

Year-round live theatre, inspiring rental space, plus theatre education for children
509-997-7529 mercplayhouse.org info@mercplayhouse.org

THE FLOYD COMPANY

TAXES
TECHNOLOGY
INVESTMENTS

(509) 997.3262 | www.TFCHQ.com
Securities offered through KMS Financial Services, Inc., a registered broker-dealer. Member FINRA, SIPC

EVERYTHING FROM CLARINET TO BULB HORNS AT THIS SUMMER'S CHAMBER MUSIC FESTIVAL



(Photo by Anne Minden.)

concerto for four violins by Vivaldi – through the contemporary era, with well-loved chamber works by Mozart, Beethoven, Brahms, and Schubert, as well as less-familiar fare.

Krentz has programmed two recent prize-winners – Kenny Broberg, the silver medalist from the Van Cliburn International Piano Competition, and Narek Arutyunian, a dynamic, up-and-coming clarinetist who won the auditions held by the Young Concert Artists International. Both perform extensively as soloists and are excited to have the opportunity to play chamber music, said Krentz.

Broberg, who impressed the Van Cliburn judges with performances that showed “an imaginative shaping of themes... and an unfailing sense of momentum,” will be featured in works by Schubert, Brahms and Dvorák. Arutyunian will be highlighted in a clarinet quintet by Mozart and a trio by Brahms.

Krentz is pleased to bring back mezzo-soprano Deanne Meek, who sang at the festival several years ago. Last year’s concerts featured a tenor, and adding vocal artists lends a special quality to the festival, said Krentz. “It was so glorious to have that voice in the barn,” he said.

The first Saturday concert showcases a trio of percussionists on marimba, bass drum, and trap set, plus gently amplified cello, in a composition by steel-drum virtuoso Andy Akiho. “It’s a very cool piece – modern but very, very hip. It blends two of my favorite, most beautiful sounds,” said Krentz. “The music just washes around and is gorgeous.”

The percussionists will perform a unique arrangement for violin, cello, piano, and percussion of a Shostakovich symphony. The bulb horns are part of a witty and earthy piece by 20th-century Hungarian composer Gyorgy Ligeti called “Le Grand Macabre.”

The festival also features many returning artists, including pianist Ryan MacEvoy McCullough, violinist Grace Park, and violist Ayane Kozasa, who plays with the Aizuri Quartet. Krentz promises “exciting, different kinds of flavors – really fun, with killer virtuosos.”

The festival runs from July 26 to Aug 4, with five Centerstage concerts at Signal Hill Ranch between Winthrop and Twisp. In addition, there are casual performances around the valley, free open rehearsals, and even star-gazing and a chance to meet the musicians.


DATES: July 26-Aug 4. For detailed concert information and to purchase tickets, visit www.methowmusicfestival.org. LOCATION: Signal Hill Ranch. Located between Winthrop and Twisp off of highway 20, up Signal Hill Road.

MONUMENTAL TASK

SAND BLASTING OF TEXT
AND GRAPHICS
STONE MONUMENTS FOR
LIFE EVENTS
DOUGLAS
WOODROW



115 S. First St.
Okanogan, WA 98840
509-449-8286
monumentaltask@gmail.com




800.757.2709

RIVER RUN INN & CABINS




On the Methow River in Winthrop WA

www.Riverrun-Inn.com



Cabins,
Private Rooms,
Vacation Home,
Indoor Pool
and Hut Tub





MARK YOUR CALENDARS FOR METHOW ARTS PERFORMANCE SEASON!

READ ALL ABOUT **METHOW ARTS FESTIVAL** - WED, JULY 4th on page 3.

SAT, OCT 20, 7PM. **CIRQUE ZUMA ZUMA**

Often referred to as an African-style Cirque du Soleil and made up of 18 African circus performers. Cirque Zuma Zuma combines the mysticism of Africa with the excitement of a theatrical cirque performance. In 2011, Zuma Zuma was a finalist in America's Got Talent.

The show is filled with non-stop action and African culture, including dance, acrobatics, tumbling and music. Featuring artists trained in Kenya and Tanzania, the performance will showcase some of the most exquisite skills associated with African variety arts and culture. These include: a South African female vocalist, club juggling, limbo dance, South African gumboot dancers, pole acts, Zuma Zuma Acrobats, a chairs handstand balance from Tanzania, comedy, Gabonese tumblers, contortionists from Ethiopia, the Africa Lion dance, Ethiopian foot table juggling and percussionists from Zimbabwe.



SAT, NOV 17, 7PM

CHICAGO'S - **THE SECOND CITY** **MADE IN AMERICA, *SOME ASSEMBLY REQUIRED**

ADULT ONLY COMEDY NIGHT! A certified American comedy institution since 1959, The Second City's laughs are 100% USA-made in this latest take on our great, big dysfunctional nation! The lauded company [John Belushi, Dan Aykroyd, and Gilda Radner, with Bill Murray] is sending satire down the conveyor belt and celebrating what makes us all tick in a hilarious revue that will leave you breathlessly ready to face the future...and all its loose screws.

Fresh, fast and always spectacularly funny, The Second City is celebrating nearly sixty years of producing cutting-edge satirical revues and launching the careers of generation after generation of comedy's best and brightest.



FRI, MAR 1, 7PM.

THE SEAMUS EGAN PROJECT

Founder of Irish-American powerhouse band SOLAS, it's hard to think of an artist in traditional Irish music more influential than Seamus Egan. From his beginnings as a teen prodigy, to his current work as one of the leading composers and interpreters of the tradition, Egan has inspired multiple generations of musicians and helped define the sound of Irish music today. As a multi-instrumentalist, he's put his mark on the sound of the Irish flute, tenor banjo, guitar, mandolin, tin whistle, and low whistle, among others. The Seamus Egan Project is founded in 2018 and brings Moira Smiley (Jayme's Stone's Folklife, VOCO), Kyle Sanna and Owen Marshall.



SAT, MAR 23, 7PM.

THE HUNTS

The Hunts are an indie-alternative-folk band comprised of seven brothers and sisters. Born and raised in the south lands of Chesapeake, Virginia, the siblings grew up in a musical home and fell in love with composing their own music. Josh (guitar, lead vocals), Jenni (violin, lead vocals), Jonathan (keys, vocals), Jordan (drums, vocals), Justin (bass, vocals), Jamison (mandolin, vocals) and Jessi (viola, banjo, vocals) pour their blood, sweat and tears into every song and strive to write music that moves hearts with beauty, power and joy.

TICKETS AND SHOW INFO: All shows are at the Red Barn, Winthrop, WA. Season passes/reserved seating and information: methowarts.org/presenting, info@methowartsalliance.org **THANK YOU** to Blue Star Coffee Roasters, Freestone Inn, eqpd and Willowbrook Farms for generously sponsoring our event season.



FREESTONE INN AT WILSON RANCH



Featuring the
Moonshine Bar



Jack's Hut Pizza & Brews NOW OPEN DAILY

Poolside cocktails, beer & wine service. We hand form our pizza dough daily & use only the finest ingredients. 5 big screen TV's & it's always FREE to shoot pool.
www.Freestoneinn.com | Jack's Hut 509-996-3212 | Inn 509-996-3906

