

LOCAL ARTS & CULTURE IN THE METHOW VALLEY & BEYOND. ART GROWS HERE.

WINTER 2020 MAGAZINE

METHOWARTS.ORG

FEATURING ARTIST
BETHANY WRAY





Purple Sage Gallery

We represent the artwork of regional artists and friends, and our mission is to support working artists, and make visitors to our gallery share a smile. Art can be very fun, thought provoking and functional.

Est. 1984

Methow Reservations





Book your Methow Valley getaway locally. We feature licensed, legal nightly rentals, local inns & extended stay homes. You are welcome to stop by our office inside the Purple Sage Gallery at 245 Riverside Ave, Winthrop, WA.

"Kind, friendly, and prompt Methow Reservations is a reliable service for staying in the Methow Valley. My family has been booking here since I was a kid! always a good experience."



1-509-996-2148

WWW.METHOWRESERVATIONS.COM

METHOW ARTS ALLIANCE
POST OFFICE BOX 723
TWISP, WASHINGTON 98856

PRST
U.S. Postage
PAID
Wenatchee, WA 98801
Permit No. 241



METHOW ARTS
WE'RE COUNTING ON YOU

Please make a tax-deductible donation to keep our programs in our community and thriving through the COVID-19 Pandemic!

thank you.

WE PROVIDE ACCESS TO ART. Our education programs are provided free of charge to over 5,000 students. We bring artists from around the globe to rural schools, emphasizing the value of cultural diversity and different world views. We offer over 650 free tickets annually to those who cannot afford admission to events. And we ensure that kids of all ages have access to vibrant art experiences year round.



WE ENSURE ARTISTS CAN LIVE AND WORK HERE. Employing over 25 teaching artists in arts education programs across the County, we pay artists for their work and support their ideas. We promote our artist's broadly through our ART magazine, website, online campaigns, free artist webpages, resources, professional development and artist networking.

WE SUPPORT OUR LOCAL NON-PROFIT ORGANIZATIONS. Serving organizations across North Central Washington we provide resources, event promotion and training/consultation in capacity building and through vigorous advocacy and leadership across the state.



2020 ARTS PARTNERS

 Twisp, WA 98856 509.997.7529 www.mercplayhouse.org	 Winthrop GALLERY 509.996.3925 www.winthropgallery.org	 cascadia music Twisp, WA 98856 509.997.4601 www.cascadiamusic.org	 TWISPWORKS TwispWorks 509.997.3300 www.twispworks.org	 CONFLUENCE gallery & art center 509.997.2787 www.confluencegallery.com	 gallery one 509-925-2670 www.gallery-one.org	 METHOW GALLERY D*Signs and Methow Gallery 109 Glover St. Twisp, WA 98856 509.997.0255 www.twispinfo.com	 WINTHROP RHYTHM & BLUES FEST Winthrop Music Association 509.997.3837 www.winthropbluesfestival.com	 METHOW ARTS 204 N. Glover St/PO Box 723, Twisp, WA www.methowarts.org	 Methow Valley Chamber Festival 509.996.6000 www.methowmusicfestival.org
--	---	--	--	--	--	--	---	--	---

BOARD OF DIRECTORS

Don Ashford, President
T. Lewis, Vice President
Frauke Rynd, Treasurer
Alison Philbin, Secretary
Jonathan Baker
Hannah Cordes
Ryan T. Bell

STAFF

Amanda Jackson Mott, Executive Director
Ashley Lodato, Arts Education Director
Emily Nelson, Outreach Coordinator
Bethany Wray, Youth Arts Initiative Instructor

SUPPORTERS

 methow arts donors + community	 ARTS WA arts.wa.gov	 NATIONAL ENDOWMENT FOR THE ARTS	 Methow Valley Public School Funding Alliance	 Methow Valley Fund	 Community Foundation of NCW
 BLUE STAR COFFEE ROASTERS	 SEATTLE FOUNDATION	 wqpd	 METHOW SALMON RECOVERY FOUNDATION	 ICICLE FUND	 SUN MOUNTAIN LODGE a resort for all seasons

CONTRIBUTORS

FEATURE PHOTOGRAPHY:
Sol Gutierrez



FEATURE ARTICLE:
Marcy Stamper

Methow Arts Alliance
204 E. 2nd Ave, PO Box 723
Twisp, WA 98856
509.997.4004 | www.methowarts.org

The ART Magazine is published by Methow Arts Alliance, a non-profit organization. All contents are copyrighted and may not be used without the express consent of the publisher.

CINNAMON TWISP BAKERY
Good Energy Food for the Whole Family!
Open Daily 7-3. Organic Grains & Flours!
Organic Espresso too!
116 N Glover Street Twisp WA 98856 509.997.5030
Free Internet Access!

Volunteer
Methow
www.volunteermethow.org



MAIL TO: METHOW ARTS/PO BOX 723/TWISP, WA 98856

Thank you for your generous gift - YOU are a **big** part of **METHOW ARTS**.

\$500 and up Other \$ _____

\$250 I would like to sponsor a Methow Arts event

\$100 I am interested in advertising with Methow Arts

\$35-\$50 **(All donations receive a free ART magazine quarterly.)**

Recurring Monthly Gift of \$ _____.

MY GIFT IS IN MEMORY IN HONOR OF: _____

THIS GIFT IS ANONYMOUS (PLEASE DON'T LIST MY/OUR NAME PUBLICLY.)



NAME _____

MAILING/BILLING ADDRESS _____

CITY _____ STATE _____ ZIP _____

EMAIL _____ PHONE _____

VISA MC AMEX CARD NO. _____

EXP DATE _____ / _____ / _____ CVC (3 DIGIT CODE ON BACK OF CARD) _____

BILLING ADDRESS SAME AS ABOVE? Yes No

SIGNATURE _____ (A credit card fee will apply.)

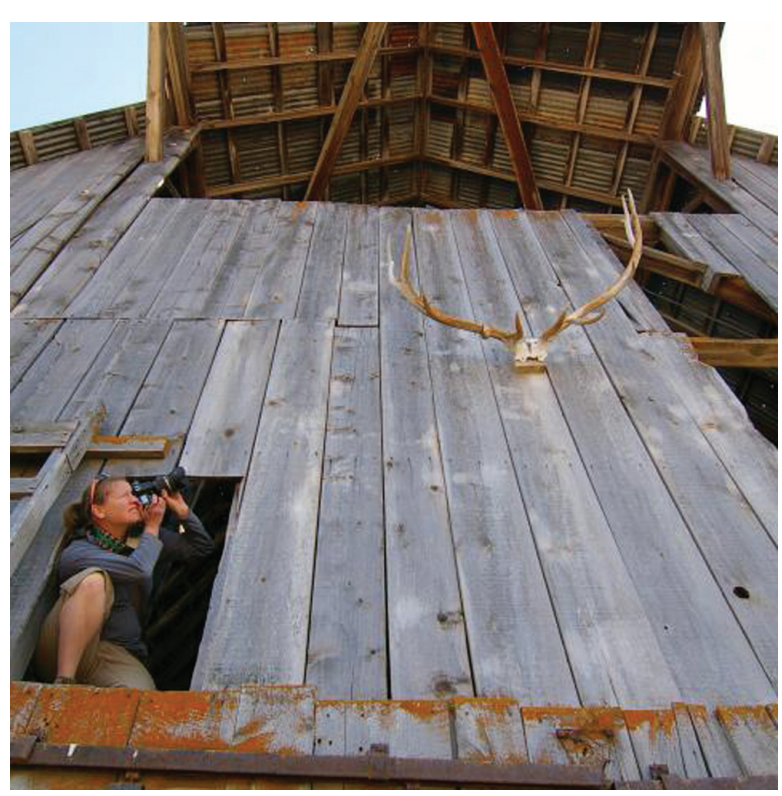
HONORING MARY KIESAU

Mary Kiesau was a woman of extraordinary energy and drive. Renowned for her photography and Environmental Education business, Mountain Kind, as well as for her deep connections within the Methow Valley community. The Mary Kiesau Fellowship Fund honors her legacy through celebrating Mary's educational and artistic passions: living in harmony and balance with the earth and its finite resources; being observant, interested in, and connected with the natural world in order to gain a deep appreciation for the place one calls home; helping to create a strong, resilient, and enlightened community that is composed of the Methow flora, fauna, and people for which she taught photography, naturalist and art classes, and created beautiful photographic art. The Fund supports the independent projects of artists, photographers, and naturalists working to further their own creativity, professional development, and the community's connection to the land, art, and each other.

The Fund is held at the Community Foundation of North Central Washington and is guided by Mary's partner Merle Kirkley and her mother, Carolyn Townsend.

To honor Mary's legacy and support the Mary Kiesau Community Fellowship Fund, please visit the website of the Community Foundation of North Central Washington, www.cfncw.org or send your check, payable to the Mary Kiesau Community Fellowship Fund to CFNCW, 9 South Wenatchee Avenue, Wenatchee, WA 98801.

For more details on the application process please contact Perri Howard at perri@vmgworks.com.



Trail's End BOOKSTORE

JOIN US THIS WINTER FOR READINGS, AUTHOR VISITS AND MORE.

FIND US ON FACEBOOK @trailsendbookstore

FIND OUR BOOKS ONLINE @ www.trailsendbookstore.com

books for all ages • games • puzzles • occasion cards & more!
open every day 10am - 5pm • 241 Riverside Ave., Winthrop, WA • 509-996-2345

✂️ THANK YOU FOR YOUR SUPPORT!

MAIL TO: METHOW ARTS/PO BOX 723/TWISP, WA 98856

METHOW ARTS
PO BOX 723
TWISP, WA 98856

place
stamp
here

Your donation supports
artists . art . students . community



EVENT CALENDAR

DECEMBER

Winter Holiday Pop-Up Markets at Methow Arts

Fri, Dec 4, 10-3pm and Sat, Dec 19, 11-2pm
Stop by Methow Arts for outdoor, COVID-safe pop-up markets and support our local artists. Mask up please. Outside Methow Arts doors at Glover and 2nd in Twisp. methowarts.org, info@methowartsalliance.org

Hands to Heart Holiday Gift Show - Winthrop Gallery

Through Jan 11
The Gallery is open Friday through Monday, 10am-5pm and by appointment. Winthrop Gallery, 237 Riverside Avenue in Winthrop, WA. 509-996-3925, www.winthropgallery.com

Cascadia's Annual Holiday Concerts

Sat, Dec 12, 7pm and Sun Dec 13, 2pm
Don't miss Cascadia Music's Holiday Concerts virtually this year. See page 16 for article cascadiamusic.org

Methow Made's Valley Goods

Through Dec 24
Holiday Pop Up store on the TwispWorks campus, Building #10. 509.997.3300. www.twispworks.org

Gems and Geology Exhibit

Through Jan 9
Celebrate the beauty of gems and geology. Confluence Gallery, Twisp, WA. confluencegallery.com

Student Reading: Justice & the American Dream

Mon, Dec 14, 2pm-3pm
The event is presented by Methow Arts and Methow at Home, tune in to watch students read poems they have created through a Methow Arts residency in Liberty Bell High School. methowarts.org/justice-the-american-dream-student-voices

\$72,000 in Covid Artist Grants Opens Dec 15

Dec 15 until funds are distributed
Methow Arts and ICCA will distribute Covid Relief Artist Grants to NCW working artists in Okanogan, Douglas, Chelan and Grant counties thanks to Icycle Fund. See page 5 for article. methowarts.org/2020-artist-grants

Bethany Wray Pop-Up Exhibit @ Studio A

Through mid-January
Stop by 114 Glover Street to see Bethany's original watercolors. info@methowartsalliance.org

Poetry Out Loud - Methow Valley

Wed, Dec 16, 6pm
Offered via YouTube. The link to the event will be updated @ www.methowarts.org/poetry-out-loud-2020/ info@methowartsalliance.org

Kathy Myers at The Gallery at Sun Mountain Lodge

Winter 2020-21
At Sun Mountain Lodge, presented by Methow Gallery. www.methowgallery.com

Sip & Paint with Bethany Wray

Tues, Dec 29, 6pm
Via Zoom. \$45/class. Register, Methow Arts, info@methowartsalliance.org, 509-997-4004.

Gallery One's Virtual PechaKucha Concert

Dec 31, 7pm
End 2020 on a high note and watch this virtual and creative event via YouTube live with a pre-funk show at 6pm. See page 15 for info. www.gallery-one.org

JANUARY

Wish You Were Here

Jan 16-Mar 6
An exhibit inviting artists to dream of times past or future. Confluence Gallery, Twisp, WA. www.confluencegallery.com

Artist Application Open for Icycle Fund's CHA - Artist-In-Residence

Deadline, Jan 30; Residency, May 21-23
In collaboration with Methow Arts and ICCA. See page for info. www.icyclefund.org/cha-cha, chacha@icyclefund.org or 509-997-4004.

FEBRUARY

Valentine's Day Pop-Up Market at Methow Arts

The 2nd week of February, TBA
Stop by Methow Arts for outdoor, COVID-safe pop-up markets and support our local artists. Mask up please. Outside Methow Arts doors at Glover and 2nd, Twisp. methowarts.org, info@methowartsalliance.org



C
U
L
L
E
R
=
S
T
U
D
I
O

cullerstudio@gmail.com = twispworks campus, twisp, wa

WasteWise

WasteWise is committed to the responsible management of the Valley's waste stream – offering creative garbage & recycling solutions for your home or business in the Methow.

509-997-8862 • WASTEWISEMETHOW.COM

SKETCHING. OILS. WATERCOLORS. ACRYLICS. PAPER. CANVAS. ORIGAMI. DRAFTING. ILLUSTRATION. MACRAME. BEADING. ADULT COLORING BOOKS. ALCOHOL INK. KIDS ARTS & CRAFTS. DIAMOND DOTZ®. CALLIGRAPHY.

**GIFTS TO GIVE
GIFTS TO GET**

FROM NOV. 24 TO DEC. 24, BRING IN THIS AD FOR A FREE GIFT WITH ANY PURCHASE OVER \$20.*

**TWISP
ART & BUSINESS SUPPLY
DAILY**

Monday – Friday, 9 am – 5 pm
114 Glover St. S., Twisp • 997-3625

*While supplies last. Must bring or mention this ad.

METHOW ARTS AND ICICLE CREEK CENTER FOR THE ARTS
TO AWARD \$72K IN ARTIST GRANTS - THANKS TO ICICLE FUND

ARTIST GRANTS!
COVID RELIEF FUNDS FOR WORKING
ARTISTS IN NCW WHO HAVE LOST
WAGES DUE TO THE PANDEMIC
OPENS TUES, DEC 15



Thanks to Icicle Fund, Methow Arts and Icicle Creek Center for the Arts will get to provide 72 artists across four counties with critical funding during a very difficult year of COVID-19. And get money into artists' hands by this Holiday Season!

Identified by the Icicle Fund's Art & History Committee as a vital need, the goal of the grants is to help North Central WA artists who have been severely impacted by the COVID-19 pandemic. Methow Arts and Icicle Creek Center for the Arts were asked to design a plan that would reach artists in need and manage the funds, award grants and work with leaders in the Arts to disseminate the information and serve on grant panels. After submitting a plan and application the Icicle Fund Board of Directors approved the funds to be launched in December of 2020 into the coming year.

Methow Arts Alliance will review and award \$36,000 in artist grants in both Okanogan County and Douglas County and Icicle Creek Center for the Arts will award the same amount for artist grants in Chelan and Grant Counties. 72 artists who lost business income due to closures and restrictions caused by the COVID-19 Pandemic will be awarded grants of \$1,000 each. Artists from these counties should apply to the organization who is managing the county in which they reside.

Rural artists continue to be deeply impacted as events, conferences, Holiday Markets, and performances across the country continue to cancel. They are impacted by hospitality industry and retail/artist studio closures, school closures, travel restrictions, continued lay-offs and social distancing recommendations. And Icicle Fund, Methow Arts, Icicle Creek Center for the Arts recognize that our rural artists are not eligible for the majority of emergency grants that target King-County or urban artists across the country.

Application selection and awards will prioritize working NCW* artists who report:

- Lost income/wages due to COVID-19
- Lost income due to cancelled events, conferences, school closures and performance cancellations.
- Difficulty in meeting living expenses due to the pandemic (Rent/mortgage, utilities, food, medical bills and other living expenses.)

APPLICANTS MUST BE:

- 21 years of age or older or financially independent;
- A resident of NCW* at the time of application and payment (residing in Okanogan, Chelan, Grant or Douglas County;)
- Individual artists of any discipline. (Presenters, curators, organizers, and producers are not eligible).

APPLICANTS MUST NOT BE:

- Applying on behalf of a company, nonprofit, organization, community group, ensembles, or collective;
- Current Icicle Fund, Icicle Center for the Arts, Methow Arts staff or Board of Directors.

The easy to complete application will launch via SurveyMonkey on December 15th on each organization's websites. Artists may also submit an application by printing and mailing them to the organization. As mentioned above, artists residing in Okanogan or Douglas Counties will apply with Methow Arts (methowarts.org/2020-artist-grants/) and artists residing in Chelan and Grant Counties will apply with Icicle Center for the Arts (cicle.org/artistgrant).

For Methow Arts this is the second round of artists grants they were able to provide this year. In April Methow Arts awarded over \$45,000 to local artists thanks to some very special anonymous donors.

We thank Icicle Fund for this generous funding and making it possible for us to offer these critical funds to our community. If you have an interest in providing additional funding for this grant please contact our Director Amanda Jackson Mott at amanda@methowartsalliance.org, 509-341-4413.

DATE: Application launches Tues, Dec 15. Applications will be reviewed every two weeks until all funds have been allocated. APPLICATIONS: methowarts.org/2020-artist-grants, icicle.org/artistgrant. INFO: amanda@methowartsalliance.org, 509-341-4413.

WINTER POP-UP MARKETS AT
METHOW ARTS



Join Methow Arts for a series of POP-UP MARKETS this winter featuring local artisans and makers. Located just outside Methow Arts doors on the corner of Glover St and 2nd in Twisp, the market offers an array of goodies for the holidays made locally.



Markets so far are planned for Fri, Dec 4, 10-3pm, Sat, Dec 19, 11-2pm, and a special Valentine's Market with dates TBA.

This are outdoor, COVID-safe pop-up markets. Mask up please and prepare to shop!



methowarts.org,
info@methowartsalliance.org

ART OF THE GROOM
The Methow Valley's one-stop shop for all things nordic skis, fatbikes, snowshoes & passes.



METHOW
CYCLE & SPORT

OPEN EVERYDAY
SALES · SERVICE · RENTALS
29 Hwy 20 Winthrop, Wa
methowcyclesport.com
509-996-3645



HANDS TO HEART GIFTS- WINTHROP GALLERY HOLIDAY SHOW

Late into the night, the potter's wheel turns, a painter's brush silently treks color across canvas and the weaver's shuttle carries handspun wool adding inches to a soft scarf. Yes, it is the Holiday Show at the Winthrop Gallery! Our area artists, crafts persons and invited guest artists have worked extra hours with their talented hands to give you an abundance of choices this season. Their creations make it easy to find a personal heartfelt gift for someone special.

DATE: Nov 28-Jan 11 The Gallery is open Friday through Monday, 10am-5pm and by appointment. LOCATION: Winthrop Gallery, 237 Riverside Avenue in Winthrop, WA. CONTACT: 509-996-3925, www.winthrogallery.com, and on Facebook and Instagram. A list of member artists and their work can be found on their website www.winthrogallery.com.



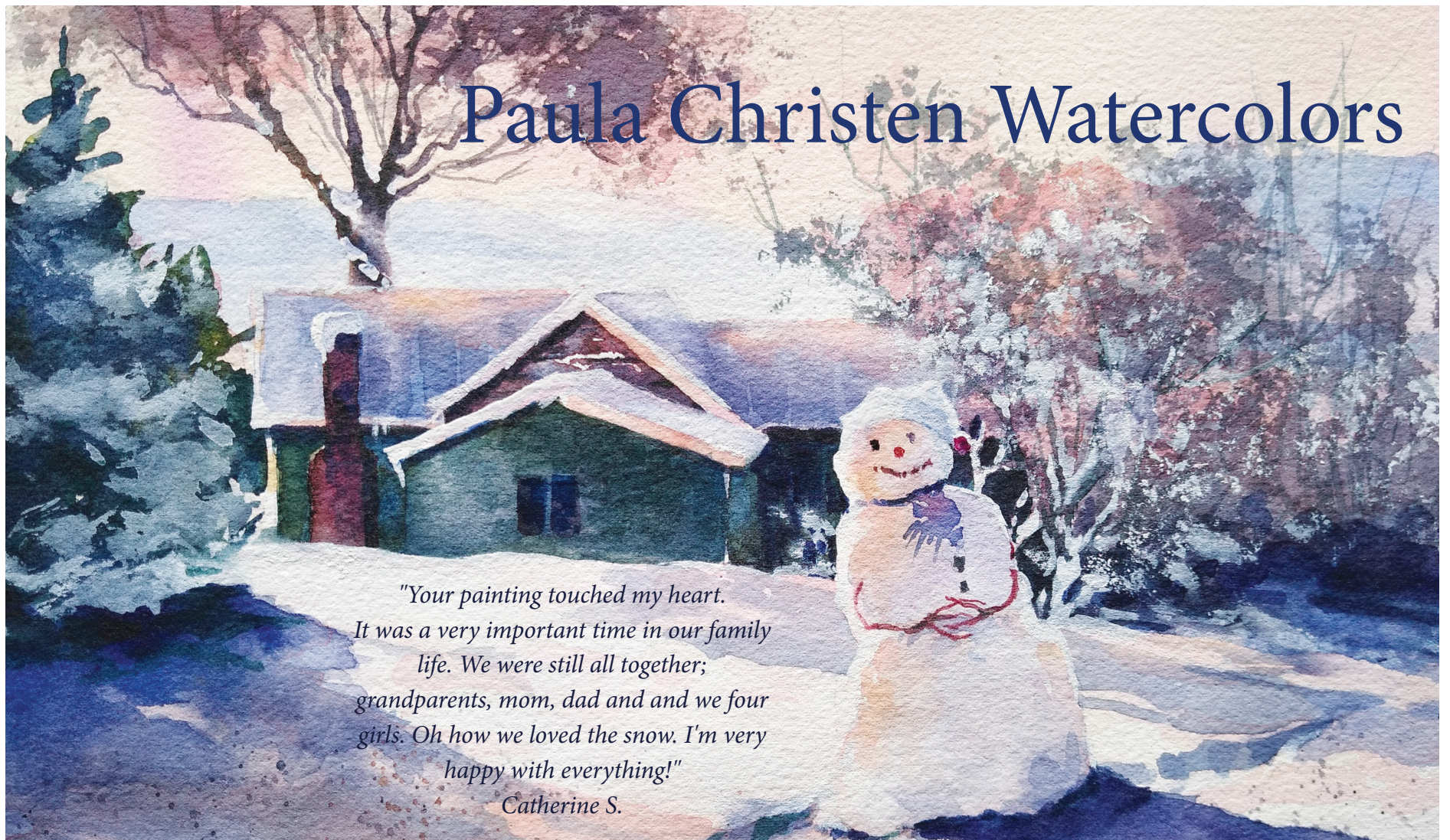
SIP & PAINT is back!

In this virtual class, students will learn basic watercolor technique from artist Bethany Wray to create a unique and colorful painting. All levels are welcome. Fun is ensured.

Spots are limited. Be sure to register now!

If you don't have a watercolor set we can get one for you. Please let us know right away.

REGISTRATION REQUIRED: info@methowartsalliance.org. DATE: Tues, Dec 29, 6pm via Zoom. FEE: \$45/class. CONTACT/INFO: Methow Arts, info@methowartsalliance.org, 509-997-4004.



Paula Christen Watercolors

*"Your painting touched my heart.
It was a very important time in our family
life. We were still all together;
grandparents, mom, dad and and we four
girls. Oh how we loved the snow. I'm very
happy with everything!"*
Catherine S.

Let's create your special family story in painting to enjoy every day.

www.paulachristen.com 509-996-2598 paula@paulachristen.com



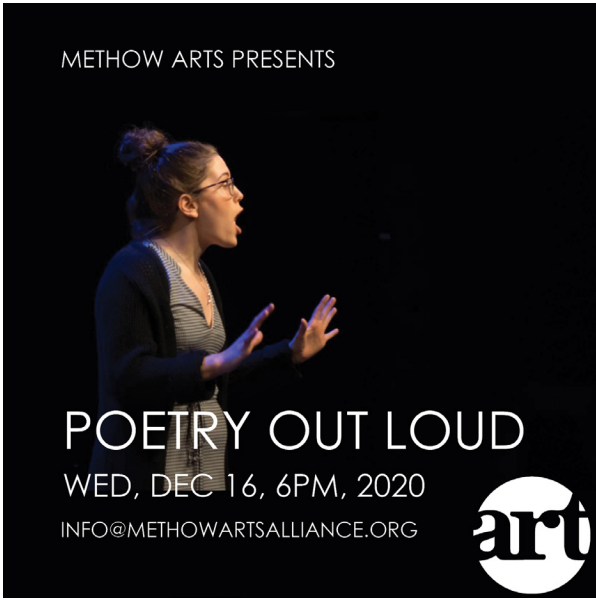
Beer & Wine Cellar
Natural Foods
Local Fruits &
Vegetables
Bulk Foods
Bulk Spices & Herbs
Bulk Olive Oil &
Vinegar
509.997.1320

**Your community.
Your news.**

Methow Valley News

Bringing you news of the Methow Valley since 1903.

Find us in print & online
www.methowvalleynews.com



through a collaboration between Methow Arts, the Public School Funding Alliance, and the Methow Valley School District.

Poetry Out Loud (POL) is a national memorization and recitation contest that helps students master public speaking skills, build self-confidence, and learn about literary history and contemporary life. Each December, local high school students compete for slots at local, regional, and state POL competitions.

Created in 2006 by the National Endowment for the Arts and the Poetry Foundation, Poetry Out Loud gives students an opportunity to work with recitation coaches such as Thome George and Rod Molzahn, who help students select poems from the anthology of allowed poems, provide them with structure for memorization, and coach them on performance skills such as projection, pacing, emphasis, and movement. If funding allows, the poetry coaches continue to tutor students throughout the duration of the competitions, as long as students are advancing to the next level

POETRY OUT LOUD

This year's ninth annual Poetry Out Loud in the Methow will look a little different than last year. Although we can't hold it in person, Methow Arts will honor the tradition of presenting this well-loved event on Wednesday, Dec 16, 6pm virtually. Students will record their poems in our new recording space, Studio A and we'll get everything edited to provide you with a thrilling evening from home.

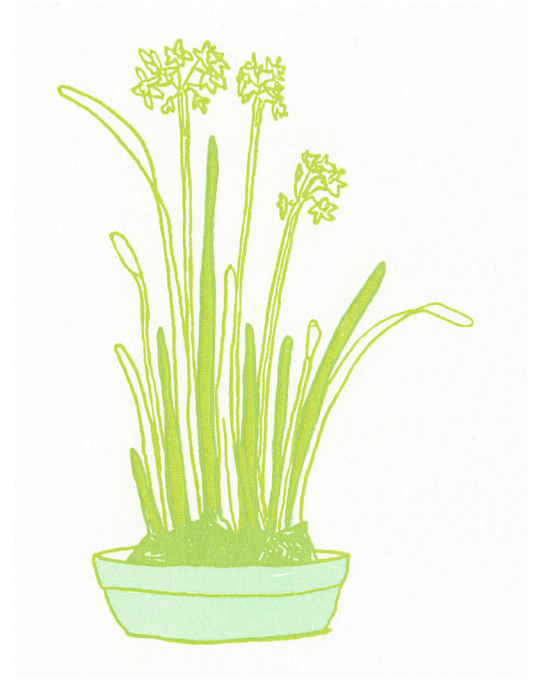
The link to the event can be found on our website here: If you'd like more information please email us info@methowartsalliance.org. Admission is by donation and there will be a virtual tip jar during the event.

For the past eight years, the Methow Valley has sponsored a robust Poetry Out Loud competition

Beginning with Tom Zbyszewski in 2013, five times a Liberty Bell student has won one of two top slots at the regional competition and advanced to the state event; regional winners after Zbyszewski were Liam Daily (2014), Claire Waichler (2015), Lilly Cooley (2016), Mia Stratman (2017), and Mackenzie Woodworth (2018).

The winner of the local competition will advance to the Eastern Washington Regional Poetry Out Loud contest in Spokane, and have a chance to make it to the state championship. The Washington state champion will advance to the Poetry Out Loud National Finals in Washington, D.C.

DATE: WED, DEC 16, 6pm LOCATION: Virtual. A link will be updated soon. COST: By donation CONTACT: info@methowartsalliance.org



(*'Winter Paperwhites'* letterpress print courtesy of True North Letterpress.)

AMARYLLIS AND PAPERWHITES AT TRUE NORTH LETTERPRESS

True North Letterpress is offering potted Amaryllis and Paperwhites along with other plant friends for bringing holiday cheer into your home this season. The studio shop will be open 10am - 4pm Thursdays - Saturdays for walk-in shoppers while encouraging curbside pick-up and shop by appointment through their website www.truenorthletterpress.com.

LOCATION: True North Letterpress, Twisp, WA. CONTACT: www.truenorthletterpress.com.



Tis a Gift to be Simple, oil, 36x48

MARY POWELL PAINTINGS
Visits welcome.
MARYPOWELLPAININGS.COM | MPOWELL.OILS@GMAIL.COM

NOAH CONSTRUCTOR LLC.
509-341-9292
www.noahconstructor.com
LIC# NOAHCLL858K2

Rendezvous Huts
rendezvous.com
509 996 8100
Operating under a special-use permit in the Okanogan-Wenatchee National Forest

METHOWHOUSEWATCH.COM
security visits, property maintenance, cleaning
509.996.3332
METHOHW847DT

BETHANY WRAY: FINDING YOURSELF

BY MARCY STAMPER

PHOTOGRAPHY BY SOL GUTIERREZ

“Artists live multi-faceted lives. My life is definitely being pulled in three directions – teaching art at college and elementary school and – on the side – trying to run my own business as an artist,” Bethany Wray said. Wray specializes in watercolor landscapes, and sells cards, prints, and stickers based on her work.

It may feel like being pulled in different directions, but there’s a consistent through line in Wray’s approach to art. Whether it’s her own art or how she supports others in their creativity, Wray embraces art as the underpinning of self-discovery.

Wray actually has two roles as a teaching artist at Methow Valley Elementary this year. She’s teaching kindergarteners through third graders as part of the Youth Arts Initiative (YAI – aptly pronounced “Yay!”). Earlier in the school year she also taught an arts residency through Methow Arts, working with fourth and fifth graders on projects where they express who they are and communicate their interests through art.

On the first day of school this year, Wray was in the classroom, working with fifth graders on their “That’s Who I Am” collages. The students mixed a personalized paint color to use as the backdrop for a collage of words and images that tells their story. The fourth graders are exploring their distinctiveness through self-portraits.

Wray knows how crucial it is for kids to get encouragement for their interests and encouragement – especially if they’re drawn to art. “Even as an

undergraduate, I studied art with the intentions of later creating and teaching art,” she said. “That’s because of the role models I had – so many amazing art teachers who had such an influence in my life.”

While Wray has always been attracted to art, she didn’t have formal artistic instruction until college, where she received undergraduate and graduate fine arts degrees in painting. She was home-schooled from kindergarten through 12th grade, an arrangement that gave her time to experiment with art and to harness her own skills.

Everyone needs encouragement to follow their dreams, but those interested in art often face larger hurdles. “Some people say, ‘You’ll never make it – I hope you have a Plan B,’” she said. “But my parents always believed in my gift. It’s an incredible thing to have that kind of support.”

“That’s one of the reasons I love to teach – and especially to teach young kids, who don’t have years of experience telling them what they can and can’t do,” Wray said. “They get to experience who they are, and to develop the self-confidence and freedom to express themselves.”

So Wray has made it her mission to give her students the encouragement to follow their passion. At the same time, they get an important foundation in the elements and principles of art.

This is Wray’s first year teaching YAI at Methow Valley Elementary, but she taught the program in Omak last year. The Youth Arts Initiative is a three-year pilot project of Methow Arts funded by Leavenworth-based Icicle Fund, with the goal of having a teaching artist in schools – ideally for three years – to give students a foundation in the basic concepts of art. The school is supposed to take on the cost of the program as the years progress.

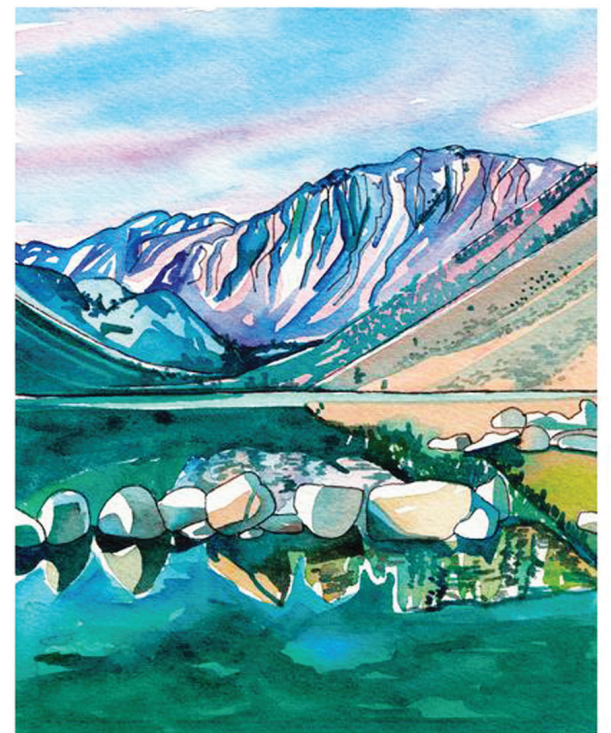
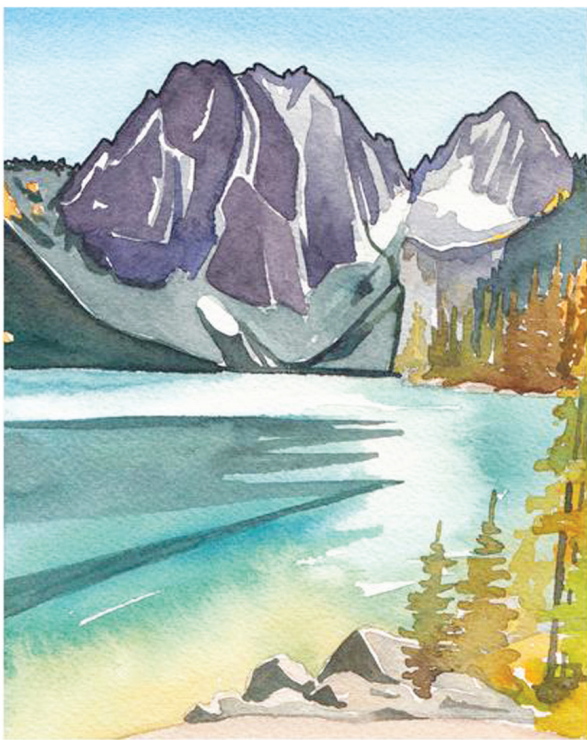
YAI aims to increase the access to and amount and quality of arts education – visual, dance, theater, and music – for K-6 students, both inside and outside the classroom. The underlying principle is that access to the arts benefits students in ways that go beyond the arts, improving their mastery of language and math, and enhancing skills in critical thinking, problem-solving, and communication.

The curriculum begins with the elements of art such as line, shape and color and slowly integrates the principles of art like rhythm, movement and balance. The lessons also incorporate art history, focusing on a particular artist or art from different cultures. “I give it context to show that I didn’t just make this up, but that art is important throughout the world,” Wray said.



While studying concepts such as lines Wray’s students move from a straight line to zigzags, wavy lines, and curly lines, and then learn about patterns and abstraction.

Even a simple exercise with lines becomes a way for kids to discover their uniqueness. Wray asked students to think of an activity they like, and then to find a way to depict that movement using only lines. That could be a series of swirly lines to depict skiing down a slope.



CELEBRATE WITH BLUE STAR

LF IN ART



Without realizing it, the kids learn abstraction, since they can't draw trees or a chair lift to illustrate the picture, Wray said.

Wray also teaches two-dimensional design, drawing, and watercolor at Wenatchee Valley College. This year, she's had to adapt to teaching entirely online.

Not having the ability to interact directly with students has been a challenge, she said. And building camaraderie in the classroom is more difficult since, instead of group critiques where they all discuss one another's work, students send in individual written comments.

But it's also been an opportunity to support students where they are, and to make art accessible for students who are working from home or caring for children, Wray said. So there's no set class time – students can watch Wray's video lessons at any time. She schedules time for individual feedback.

COMPLETING THE CIRCLE

Wray came to watercolors only five years ago, after pursuing other mediums and techniques. In college, she painted in acrylics and oils, worked with charcoal and pencil, and did collage. In graduate school, she created conceptual art installations and videos "centered on the exploration of desire and the formation of self."

"You do weird, experimental things in art school,"

she said. All those experiences helped her think critically about her art and how it shaped her identity.

But after the cerebral realm of graduate school, it was watercolor that helped Wray rediscover the joy and playfulness of art. "You draw on your background and all those voices, and have to sift through them to figure out which (ones) you are. But in watercolor,) I could choose what I wanted to be."

"I like watercolor because I didn't have someone who told me what to do with it," Wray said. "It's the one thing I had where I didn't have this voice in my head saying, 'This is what you're supposed to do.' I came to it fresh."

In fact, when she first started doing watercolor painting, it was something she did for herself, a satisfying way to capture her experiences in the mountains. But as people discovered Wray's paintings, they found it resonated with their own time in nature and began buying her work.

"It's so nice to be out there showing your work, and to have people connect and show admiration for it – it kind of completes the circle," she said.

Wray finds fulfillment and inspiration in the intersection of art and nature. She loves plein air drawing and painting – creating art in the midst of the scene. "I'm happiest hiking with paper in my backpack, with the luxury of a few hours to paint," she said.

But Wray acknowledged that that luxury can be easy to romanticize, since the great outdoors – with wind and rain, blistering hot sun, and biting bugs – sometimes interferes with making art. At those times, Wray snaps photos as a reference for painting in her studio.

Wherever she works, Wray starts with a pencil sketch of contour lines and then applies her watercolor on top of it. Many watercolor painters use a wet-on-wet technique, which produces a watery, translucent quality, with muted colors diffuse edges. Wray takes a different approach, applying watercolor glazes and letting each layer dry before she adds the next one. The technique results in saturated, luminous colors with distinct borders, which Wray often accentuates with a black outline.

Wray's paintings capture landscapes in the North Cascades near the Methow and Leavenworth, where she lived before

coming to Twisp, as well as places from her travels. Her technique emphasizes the play of light and shadows on jagged peaks, reflections on alpine lakes, and the intensity of the colors in the mountains.

"The natural world is awe-inspiring and reminds us of our smallness, and how precious these places are and how fleeting time is. So I paint because beauty is worth it and remembering that it is special to be here is worth it," she said.

Coming to the Pacific Northwest from southern California was inspiring and eye-opening. "I was surrounded by so much beauty that I couldn't help but paint – I didn't want to be cooped up in the studio," she said.

The opportunities in these small, rural areas to show, sell, and teach art have been incredible, she said. "Artists are so well supported here," she said.

Wray's art will be on view at Studio A, a project of Methow Arts at 114 Glover Street, through mid-January, at Methow Arts' Pop Up Holiday Market on Sat, Dec 19 and in Confluence Gallery's Gems and Geology show through January 9. Her work can also be seen on her website at arrowleafstudio.com.



HANDCRAFTED COFFEE FOR COFFEE LOVERS

Always Good!

BLUE STAR
COFFEE ROASTERS
BLUESTARCOFFEEROASTERS.COM

GEMS AND GEOLOGY HOLIDAY GIFT SHOW

Support local artists at the Confluence Gallery's Winter Exhibit and Holiday Gift Show this holiday season.

Our Earth is full of a myriad of hidden treasures just beneath our feet. Throughout the millennia, very slow but constant changes in the earth's crust and mantle produce the world's most precious natural works of art in macro (mountainous and rock formations in our landscape) as well as micro (gemstones.) While human intervention is often needed to bring out some of that intrinsic beauty, there still remains the mystery and wonder in each and every stone.

This exhibit seeks to mesmerize, capture the imagination, and inform about the geological, gem, mineral, fossil, and jewelry world. Artists capture the magic of underground gem wonders as well as the majesty of the above ground rocky landscape. The Confluence Gallery hopes to exhibit both 2D works representing rocky formations as well as 3D works of custom cut faceted gemstones, cabochons, and jewelry featuring precious and semi-precious gemstones. Through the exhibit they offer jewelers the opportunity to create custom jewelry items from loose gemstones purchased by clients at the exhibit.

Curators Joanne Marracci and Sarah Jo Lighner.



DATES: Through Jan 9. LOCATION: Confluence Gallery, 104 Glover Street, Twisp, WA. Hours, Wednesdays through Saturdays, 10am to 3pm, Saturdays open at 9am. INFO/CONTACT: info@confluencegallery.com, 509-997-2787.



FIREWEED PRINT SHOP

Hot off the press at Fireweed Print Shop comes artist Laura Gunnip's 29th limited edition letterpress calendar, Saturn Return 2021. 12 months of celestial zodiac signs, their ruling planets and phases of the moon. This witchy offering is a mutual aid fundraiser for Foundation for Youth Resiliency & Engagement, serving all Okanogan County youth. OK FYRE is committed to centering the voices of today's and tomorrow's youth, using knowledge and critical thinking for the betterment of our community, and addressing equity and inclusion through deliberate representation and advocacy.

"I am excited to offer 50% of this year's calendar sales to OK FYRE", enthuses Gunnip "Let's build a more equitable and resilient community together." Direct donations are encouraged to further support this local BIPOC lead organization.



INFO/CONTACT: To order the calendar for either pick up or shipping visit fireweedprintshop.square.site.

To learn more and to donate directly to OK FYRE visit: okfyre.org



twisp river
hotel suites

SEPARATE PET-FRIENDLY UNITS
Tourmet Trub N To Breakfast

- ★ spacious luxury suites
- ★ full kitchens
- ★ deep soaker tubs
- ★ fire places
- ★ steps to dining and shopping
- ★ close to trails
- ★ wifi

855.784.8328 | 140 W. Twisp Ave. | TwispRiverSuites.com

Peace and Privacy on the Twisp River

tripadvisor

Swanson Woodcraft

Custom Furniture & Built-ins

Rick Swanson
509.996.2297



Reflected Light Images

Events, People, Natural History photos by Teri J Pieper

Member, The Winthrop Gallery
509.630.6224 | www.teriepieper.com

rick@swansonwoodcraft.com | www.swansonwoodcraft.com

VALLEY GOODS ESTABLISHES PERMANENT HOME ON THE TWISPPWORKS CAMPUS

Methow Made is excited to announce the expansion of its popular retail store, Valley Goods, from a holiday pop-up to a permanent space for all things local! It opened in time for the Thanksgiving Holiday and features favorite local artists and makers. Its new, larger location, in the space formerly occupied by the OSB Taproom, means more space for safe shopping, more space for new vendors and more opportunities to discover something new.

Finding the time to shop local is easy at Valley Goods. The store is open every day, through December 24th. Featuring hand-made and one of a kind items from over forty local vendors and staffed by local artists, Valley Goods is sure to make ticking off your holiday gift list a treat this season!

Valley Goods is brought to you by Methow Made, a marketing program that gives Methow Valley artists, makers, producers and micro-manufacturers exposure to customers who love the Methow Valley and want to support our local economy.

DATES: Nov 20-Dec 24, open every day, Monday through Friday, 10am-6pm and 1-3pm Saturday and Sunday. LOCATION: Valley Goods is located on the TwispWorks campus in Building #10 (formerly the OSB Taproom). CONTACT: 509.997.3300, twispworks.org



TWISP CHAMBER: WINTER 2020 DURING COVID



In normal times, businesses in the Methow Valley look forward to Winter's respite. Life moves a little slower with the decrease of tourists and arrival of holiday breaks.

The act of turning the calendar to a New Year offers nostalgic reflection of another successful 12 months operating a small business. (And, of course, work hours can be a bit more flexible when there's all that powder to play in.)

Amidst a global pandemic, however, "normal times" are rather elusive: with the arrival of snow and freezing temperatures, Winter brings a visceral unease to the local shops, artists and organizations unsure about their economic futures.

Their worries do not surround a lack of tourism. In fact, this winter may produce record numbers for Methow Valley recreation, since those who fled our way in summer to take advantage of open-air bike rides, hiking and water sports will most likely return to breathe in the safety of distanced outdoor skiing, fat tire biking and snowshoeing.

Here's the rub: what percentage of these incoming visitors will feel comfortable stepping inside the doors of a (literally) small business? Other than hotels and restaurants, what other retail and services merit taking a risk to one's health, even though their lack of risk could result in a risk to the business' health? To be fair, this burden is also placed on Methow Valley locals: who will bravely sacrifice the safety of online shopping and ease of delivery for in-person purchases that require lacing up one's boots, navigating frozen roads and drying out one's hands with multiple shots of sanitizer?

In normal times, the Methow Valley community is generous. In these times, however... the Methow Valley commonwealth is absolutely, altogether altruistic.

Case in point: in October, Give Methow set an all-time record by raising over half a million dollars to our local non-profits. Since May, donors also raised over \$115,000 in \$1500 grants offered to Methow Valley businesses. Since July, even more donors raised \$30,000 in \$1000 grants offered to Methow Valley artists.

That's why we here at the Twisp Chamber of Commerce are writing this article, to tell y'all to keep it up! Over 165,000 businesses have permanently closed in the US since March due to the economic effects of COVID-19, but the benevolence of readers like you keeps Methow Valley doors open (and hearts full) one dollar at a time.

HERE'S A FEW WAYS YOU CAN SUPPORT ARTISTS, BUSINESSES AND ORGANIZATIONS THIS WINTER:

1. Set a monthly "Twisp Business Budget." Committing to just one local meal a week or \$50 in services a month goes a long way.

2. Contribute your time. "Like" a Facebook page (like @TwispWA!), sign up for an e-Newsletter, write a 5-star review on TripAdvisor or Google Maps. The more you stay connected with your local artists, businesses and organizations, the more you'll know how to support them directly.

3. Stay connected. Take a weekly walk or drive down a different part of Twisp to remember who's still working to keep their lights on. Swing inside to warm up, and to warm the hearts of business owners and staff with a few words of encouragement.

Are you an artist or business/organization that would like to stay connected to the Methow Valley business community, while also receiving marketing and economic support? Consider joining the Twisp Chamber of Commerce! Visit TwispWA.com/Chamber to learn more.

WEAGANT STUDIO

Downtown Twisp | 109-A Glover St | 509-341-4318

Brown's Farm

Complete Private Cabins

Jeff & Alicia Brown
887 Wolf Creek Road, Winthrop WA 98862
(509) 996-2571 www.methownet.com/brownsfarm

METHOW VALLEY CHAMBER MUSIC FESTIVAL WILL BE BACK...
KEVIN KRENTZ, ARTISTIC DIRECTOR
www.methowmusicfestival.org

Real Food from the Methow Valley, WA

WILLOW BROOK FARM

PURPLE POWER KRAUT

WILLOW BROOK FARM

Real Food for the People - Carlton, WA 509-590-5155 cell | 509-997-9077 farm
IG @willowbrookorganics | FB @willowbrookcarlton | willowbrookorganics@gmail.com
willowbrookorganics.com | **NEW! shop directly @** <https://app.barn2door.com/e/3o4AQ>

ICICLE FUND WELCOMES APPLICATIONS FOR ITS SPRING ARTIST RESIDENCY - THE WENATCHEE RIVER CHA

**RESIDENCY DATES: MAY 21-23, 2021,
APPLICATION DEADLINE: JAN 30, 2021**

As part of its 20th anniversary celebration, the Icicle Fund hosted one Artist-In-Residence last October and is set host another in May, 2021 to celebrate the Icicle Fund's Conservation, History and Arts (CHA) of North Central Washington.

The program, provided in collaboration with Methow Arts and Icicle Creek Center for the Arts, holds a goal of honoring, celebrating and recording the unique environmental aspects of each location, inspired by revisiting past work created by poet William Stafford in the Methow (1993) or Watershed Artists in the Wenatchee (2001).

The application for the upcoming Wenatchee River Artist-In-Residence is open with a deadline of January 30, 2021. Up to 10 North Central Washington artists across disciplines will be selected, and will visit up to ten selected locations in the Wenatchee Watershed during the weekend. They will document their surroundings through visual arts, writings, music,

and other creative mediums, with the opportunity to draw from changed conditions of the environment as illustrated by the 2001 Watershed Artists. After the residency, a traveling exhibit will be scheduled to showcase the work produced by participating artists. All COVID safety protocols will be observed.

DATES: Deadline for application, Jan 31, 2021. Residency dates, May 21-23, 2021 from Fri, 10am-Sun, 4pm. **INFO:** www.iciclefund.org/cha-cha. **CONTACT:** chacha@iciclefund.org or 509-997-4004. Ask for Emily Nelson, outreach coordinator or Amanda Jackson Mott, executive director at Methow Arts.



Art That Kicks Butt
Always at Twisp River Suites Gallery

Ginger Reddington
H: 509.997.2721
C: 509.995.2471

www.ponderosastudio-gingerreddington.com

ORGANIC METHOW RADIO
radioroot.com

wqpd

HONEST DESIGNS. DURABLE CONSTRUCTION.

eqpdgear.com | MADE IN TWISP, WA

GIVE THE GIFT OF LONGEVITY.

COME VISIT US AT: **TWISPWORKS** | MON-FRI 10-4 | SAT 10-2

PINE NEAR RV PARK

Enjoy Old West Winthrop
One Block above Main Street
Dine, Dance, Shop & Explore

509-341-4062

Pull Thru 30/50 amp Sites
1/2 hour to North Cascades
Walk to Town • Walk to Nature Trails
Excellent Cell Service & Satellite Reception
Coin Laundry & Showers • Free Wi Fi that Works

www.PineNearPark.com

METHOW SALMON RECOVERY FOUNDATION

SALMON - PUBLIC ART - EDUCATION - HABITAT - COMMUNITY

509.429.1232 - www.MethowSalmonRecoveryFoundation.org

Rocking Horse BAKERY

Delectable breads, pastries, espresso, teas, soups and sandwiches featuring locally produced ingredients.....all handcrafted daily

265 Riverside Ave, Winthrop, WA 509-996-4241 **OPEN EVERY DAY**

THE WINE SHED

WINE BEER SPIRITS TASTINGS

Downtown Winthrop
130 Riverside Avenue

Find us on Facebook!

TWISPSWORKS WELCOMES SILVERSMITH GRACE ASHFORD OF GRACE ASHFORD DESIGNS

Grace Ashford's childhood was spent surrounded by artists and craftspeople. "I grew up in a household that lived and breathed art and had at my fingertips the raw materials and the grown-up tools to experiment." This upbringing instilled in Grace an incurable desire to design and create.

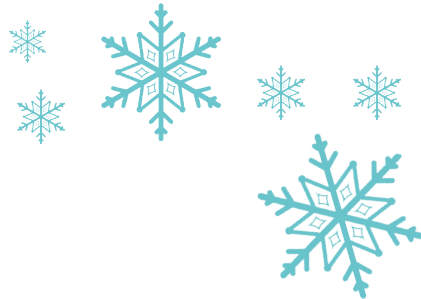
Grace spent her early adult life living abroad and starting a family, all the while searching for her place through the exploration of different mediums. It wasn't until she returned to the United States after a decade in Europe that she focused in on jewelry design and silversmithing. "Thankfully, it is also a medium that fits with my life as a mother of four. My children are a huge inspiration. Their love of life and ability to notice the smallest bits of beauty in the strangest of places keeps me smiling and reminds me to keep my eyes open to the world around us. In a very different way, my years abroad, and my experience with different cultures have left me with a profound interest in the amazing variety of human experience, and a willingness to experiment without fear of failure."

Grace's designs rarely emerge fully formed, her pieces evolve and grow during her process. "Sometimes it

takes on a life of its own, and I am merely helping it find the right form. Other times I settle on a specific design, and struggle to achieve the picture in my head. In either case, the outcome is always a piece that has a unique character, and its own story to tell."

Few in the Valley are unfamiliar with the Ashford family name - it is synonymous artistic endeavors in the mediums of textile, music, pottery and now jewelry design & silversmithing. With her permanent move to the valley earlier this year, Grace has created a beautiful and inviting studio and retail space within her mother's Culler Studio on the TwispWorks campus. Culler Studio and Grace Ashford Designs are open limited hours this season and by special appointment.

LOCATION: Culler Studio & Grace Ashford Designs - Building #10 on the TwispWorks Campus. HOURS: Winter hours vary. CONTACT: gmashford@gmail.com.

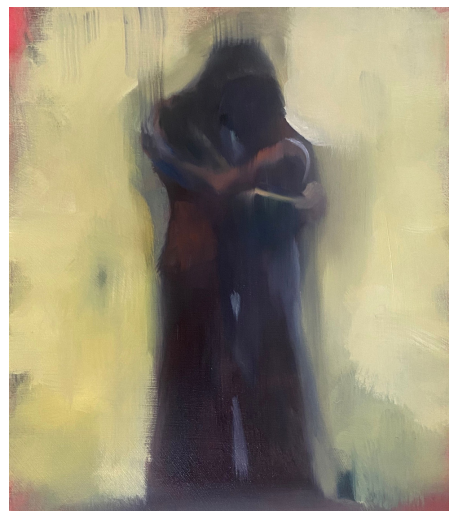


WISH YOU WERE HERE

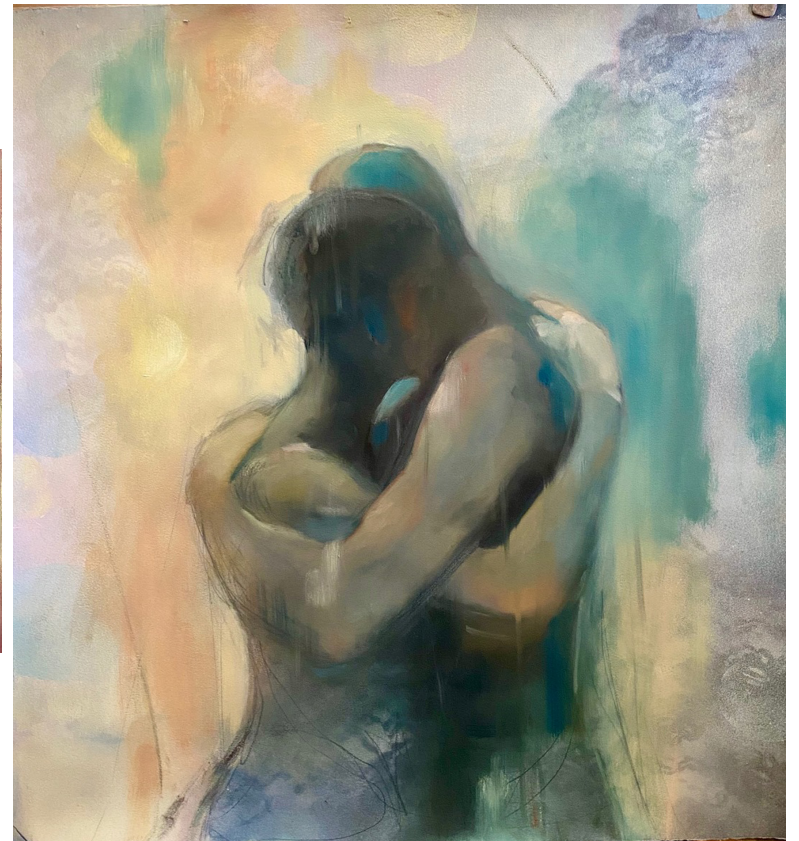
As we navigate this new world of isolation, Confluence Gallery has invited artists to dream of times past or future. This show is a love letter to the life we once lived and the life we hope to live after the virus has been contained. Artists show visions of places they hope to see, connections they've missed, and feelings they can't wait to chase again. Artists are invited to let the imagination travel beyond the present and into a future world that they know is waiting for you, and all of us.

Curators - Mandy Shoger & Joanne Marracci

DATES: Jan 16-Mar 6. LOCATION: Confluence Gallery, Twisp, WA. CONTACT: www.confluencegallery.com



(Wish you were here by Janet Fagan, work in progress. View her work at the Confluence Gallery from Jan 16 to Mar 6.)




EMILY POST POTTERY
emilyapost@gmail.com
509.341.4710
www.emilypostpottery.com




Affordable Cabinetry
Serving the Methow Valley for 25 Years.
509/996-3771
alpinedesigns@methownet.com

- Mobile Showroom
- Personalized Services
- Computerized Kitchen Design
- Corian & Granite Countertops
- Wholesale Appliances




Winthrop GALLERY
www.WINTHROPGALLERY.COM
PO BOX 272 WINTHROP WA 98862 (509) 996-3925



TACKMAN SURVEYING PLLC
119 Glover Street in Twisp
509.996.3409
tackmansurveying.com



OPEN DAILY!
Supporting the fine art of winter recreation!
509.996.2886
257 Riverside
Winthrop, WA 98862
www.winthropmountainsports.com



ASPEN GROVE
HOME. KITCHEN. INSPIRATION.
Winthrop, Wash.
aspengrovehome.com | 156 Riverside Ave. | (509) 996-2009

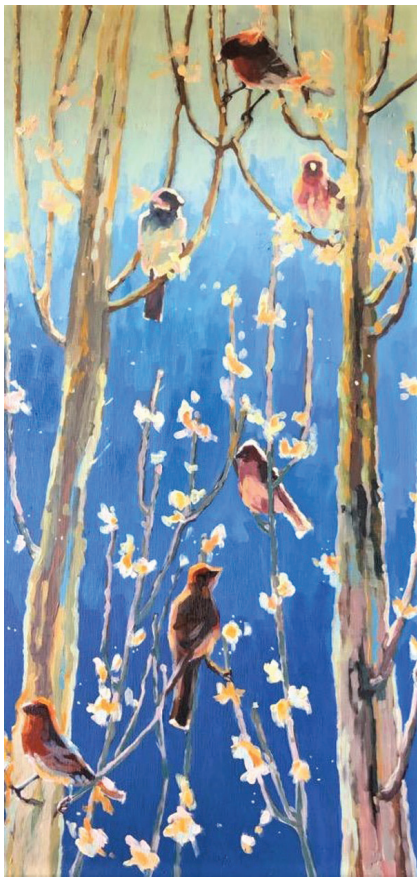
ARTISTS AND PATRONS II, KATHY MEYERS

Kathy and Jim Meyers pulled up outside of the Confluence Gallery one snowy winter day in the late 90's. Kathy was looking for a place to sell her artwork in the Methow Valley so they just dropped by, cold called if you will, at the Gallery. She was impressed that Sybil Macapia, Confluence's director, took the time to look at her work while standing outside in the cold, the gallery being off-limits because of a class. Jim adds the detail of Sybil was rolling a cigarette, an act that obviously impressed him in some way. Kathy, even after so many years, seems thrilled that Sybil accepted all her nicely framed little winter scenes drawn in colored pencil. She also recalls Jerome Thiel buying one of the works, making him her first Methow patron. I wondered aloud if Jerome still had the painting and whether he knew that its sale was significant to Kathy. She just laughed.

After moving to the Methow in 2002 she taught painting classes at Confluence Gallery which brought in students from as far away as Tonasket, Manson and Wenatchee. At

one point she was teaching 2 classes a week to keep up with demand.

Today most of Kathy's relationships with patrons come through her commissioned work. As her self-confidence grew so did her willingness to take on commissions, the first one coming from a high school exhibit where someone noticed a nude

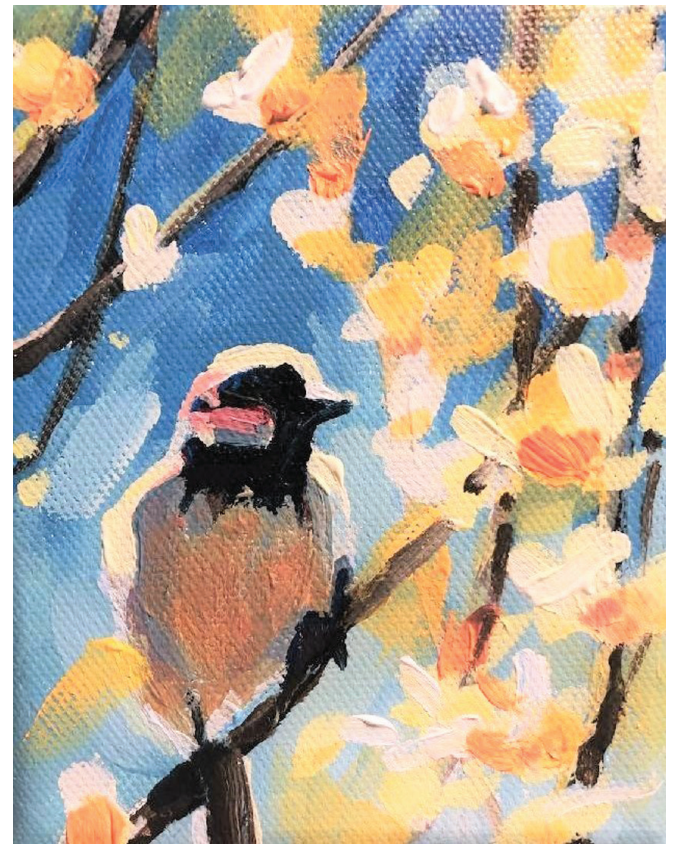


dancer she had painted and commissioned another. Kathy's authentic style and her affinity with animals brings her many gratifying pet painting projects. Over the years many of these projects culminate in tears of emotion when owners first view the image and character of their dearest furry friends captured on canvas. Art is a powerful thing.

Kathy also shared the story of one patron's silence when the artwork was revealed. That kind of experience is pretty awful for both parties and led her to become a very clear communicator and to thoroughly discuss expectations. Kathy will not charge for a painting if the client isn't satisfied and the second version of the portrait left everyone relieved and happy.

As a curator for The Gallery at Sun Mountain Lodge where we display Kathy's work, I believe her appeal lies in the vibrancy of her work. It is loose and approachable. It is pure color and light and full of her love for painting and her skill at capturing the emotion of a scene, or the nature of the animal or the juiciness of the fruit...She's all in.

To learn more about The Gallery at Sun Mountain Lodge, visit www.methowgallery.com.



View Kathy Myers' work at The Gallery at Sun Mountain Lodge. Featured artwork from top clockwise: Morning Gallop, acrylic; Little Finch, acrylic; Perfect Pitch, acrylic. Find more artwork featured at Sun Mountain Lodge on their website: www.methowgallery.com

ENJOY MAKING
A LITTLE BIT OF EVERYTHING GOOD.

feast

50 LOST RIVER ROAD • OPEN DAILY 7AM-6PM • 509.996.2855
THEMAZASTORE.COM

Valley Hospitality Resources
Your Choice for Quality Services

- Vacation Rentals
- Personal Properties
 - New-Builds
 - Businesses
 - Small Repairs
- Limited Seasonal Yard Maintenance

And, YES!! We do windows.

Proudly serving the Methow Valley
We thank you for your support & referrals

VALLEY HOSPITALITY RESOURCES
206.335.0616 / 509.996.8272
Call us for your Cleaning Needs!

Rebecca & Sue
 Alex
 Jeannie
 Chris
 Julie & Scott
 Shane
 Jeff
 Colton
 Kathryn

RIVERSIDE
PRINTING
+ design

Wide format printing Business Cards
Posters Postcards
Brochures Laminating
and more!

email projects to:
riversideprinting@methownet.com

173 Riverside Ave #5, Winthrop
509.996.3816

WORAS WOODWORKING LLC
custom handmade cabinets and furniture

PHIL & SOLOMON WORAS
509-429-9412
woraspc@gmail.com
www.woraswoodworking.com
Lic # WORASWL901BL

FROM ELLENSBURG'S GALLERY ONE

SHOP FOR LOCAL GOODS ONLINE WITH A NEW WA BASED ONLINE STORE

Online retail has already been a great platform for finding artist-made goods, but since the pandemic has become the go-to place for anyone seeking a safe and convenient way to shop. Gallery One is making it even easier to buy one-of-a-kind, high quality arts and crafts by northwest artists through their new online gift shop. With an assortment of jewelry, home goods, accessories, books, games and more, your holiday shopping will be done in a snap. Not only will you find unique items, but you also can feel good about supporting creative entrepreneurs in your own state. galleryonegiftshop.com



MUGS WITH A MISSION CALL AIMS TO CHANGE YOUR PERSPECTIVE OVER MORNING COFFEE

In March 2021, Gallery One will fill their exhibition space with Mugs with a Mission. This national call tasks ceramic artists with creating works that go beyond merely being a vessel for your coffee or tea, but offering them as a sounding board for making our world a better place by drawing attention to an underserved community, a moral or ethical injustice, or just plain celebrating the positive aspects of being human in today's chaotic world. All artists working in ceramics are welcome to apply to this open call hosted on the Cafe' online call website. Deadline for entry is February 1. Cash awards totaling \$800 will be distributed by the jurors.

DATE: Deadline for entry, Feb 1. View works in-person at Gallery One's main exhibit space March 5-27. CONTACT/INFO: gallery-one.org. LOCATION: Gallery One, Ellensburg, WA.



GALLERY ONE FEATURES THEIR FIRST EVER PECHAKUCHA CONCERT ON YOUTUBE LIVE NEW YEAR'S EVE

Gallery One is doing their part to End 2020 on a High Note which also happens to be the theme for their next virtual PechaKucha event. If you are not familiar with the PechaKucha (PK) format, each 20x20 presenter shows 20 chosen images, each for 20 seconds. In other words, they've got 400 seconds to tell their story, with visuals guiding the way. PechaKucha means "chit chat" in Japanese. This creative outlet began as nighttime get-togethers in Tokyo in 2003 by two renowned architects. Since then, three million people have attended PK events worldwide. Gallery One has been a proud participant in this movement for over five years.



This event aims to celebrate central Washington musicians, whose performances are a luxury we've had to live without for most of this year. If you are craving live music, join the performers on YouTube Live December 31 at 7pm (pre-funk at 6:00) for a Gallery One sponsored PK concert! Musicians have been invited to share their story in a traditional PK format and then perform 1-2 songs online. This is a sliding scale ticketed event. Proceeds will be distributed among the performers. Participants will also be invited to "busk" virtually for tips from the audience.

DATE: Dec 31st, New Year's Eve. CONTACT/INFO: www.gallery-one.org LOCATION: Gallery One, Ellensburg, WA.



GALLERYONEGIFTSHOP.COM

Shop safely and conveniently for handmade goods by Northwest artists & unique gift items!

USE 15%OFF CODE ON YOUR NEXT PURCHASE

ART
CLASSES
GIFTS
STUDIOS
CLAY
RENTALS



Historic Ellensburg, WA
www.gallery-one.org
509-925-2670

ART 2 GO
Pick up or purchase an art kit online and make art from anywhere!
Instruction packet included plus a link to a YouTube tutorial.



GALLERYONEGIFTSHOP.COM

Bruce Morrison
www.brucemorrison.com

Carving
SIGNS • DOORS • MANTELS • ORNAMENTS

(509) 429-7726 - PO Box 1043 Twisp WA 98856

Integrated Design Concepts, Inc.
A CUSTOM DRAFTING & DESIGN SERVICE

RESIDENTIAL, COMMERCIAL & LIGHT INDUSTRIAL DESIGN

Howard Cherrington
PO Box 681
Twisp WA 98856
509.997.4865

www.integrateddesignconcepts.com

SING TOGETHER! PLAY TOGETHER!



CASCADIA MUSIC PRESENTS ITS HOLIDAY CONCERT - DEC 12 & DEC 13



(Join Cascadia for its annual Holiday Concert which will be a virtual event this year simulcast on Facebook and KTRT with a recorded viewing available after the event. The Concert will take place around the valley, sharing songs of joy and peace, hope and greetings.)

Save time for Cascadia Music's Holiday Concerts. Singing together lifts us up! Playing together brings us joy! Even if we can't meet in person, bringing our hearts and minds together is more important than ever. Cascadia Music is grateful to be a part of this community that is strong, resilient and resourceful. Starting in September they invited the community to join them in creating a Holiday Celebration that was sure to make the community proud.

This year's event looks a bit different as do most events we've seen. Cascadia will present a virtual event, the Cascadia Music Holiday Concert, simulcast on Facebook, KTRT and recorded for viewing after the event, will take place around the valley, sharing songs of joy and peace, hope and greetings of the season.

Cascadia's ensembles are preparing to rehearse virtually or in small socially-distanced groups to continue their 34 year tradition of preparing a Holiday Concert and annual gift for its community.

Rehearsals will begin in September and continue through mid-December. Community ensembles are open to anyone willing to sing, play and learn more. All levels, from beginning to advanced are encouraged to join.

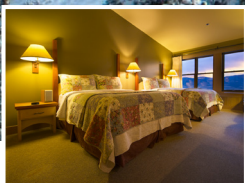
Cascadia emphasizes that the health and safety of its ensembles and community is very important to them. In their commitment to keeping friends and family safe, they will be following the guidelines from local and state health departments as they change. Virtual means of music distribution,

rehearsal recordings and social distancing will enable participants to rehearse without meeting in person, and technology enables them to put together a Holiday Celebration and message of hope for everyone in our community. Volunteers are welcome and tasks will include making or editing videos, decorating spaces for recordings, and more.

DATES: Sat, Dec 12, 7pm and Sun, Dec 13, 2pm.
INFO: To stay informed of chorale and orchestra rehearsals, volunteer opportunities, and performance dates, visit cascdiamusic.org or email cascdiamv@gmail.com.



Happy Holidays from all of us here at Methow Arts! Thank you for your support this year and love for our community.



Luxurious Rooms



Spa Treatments



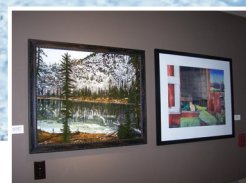
Fine Dining



Romantic Getaway



Cross-Country Skiing



The Gallery



Snowshoeing

SUN MOUNTAIN LODGE

a resort for all seasons

Enjoy luxury at the edge of the wilderness, mountain fresh air, 200 kilometers of groomed cross-country trails and plenty of other outdoor winter activities. Call the Lodge for information, Current Specials and reservations.

While you're here, visit **The Gallery**, showcasing the best of local artists. Call the Gift Shop for details.

604 Patterson Lake Road, Winthrop, WA 98862 | 800.572.0493 | sunmountainlodge.com

