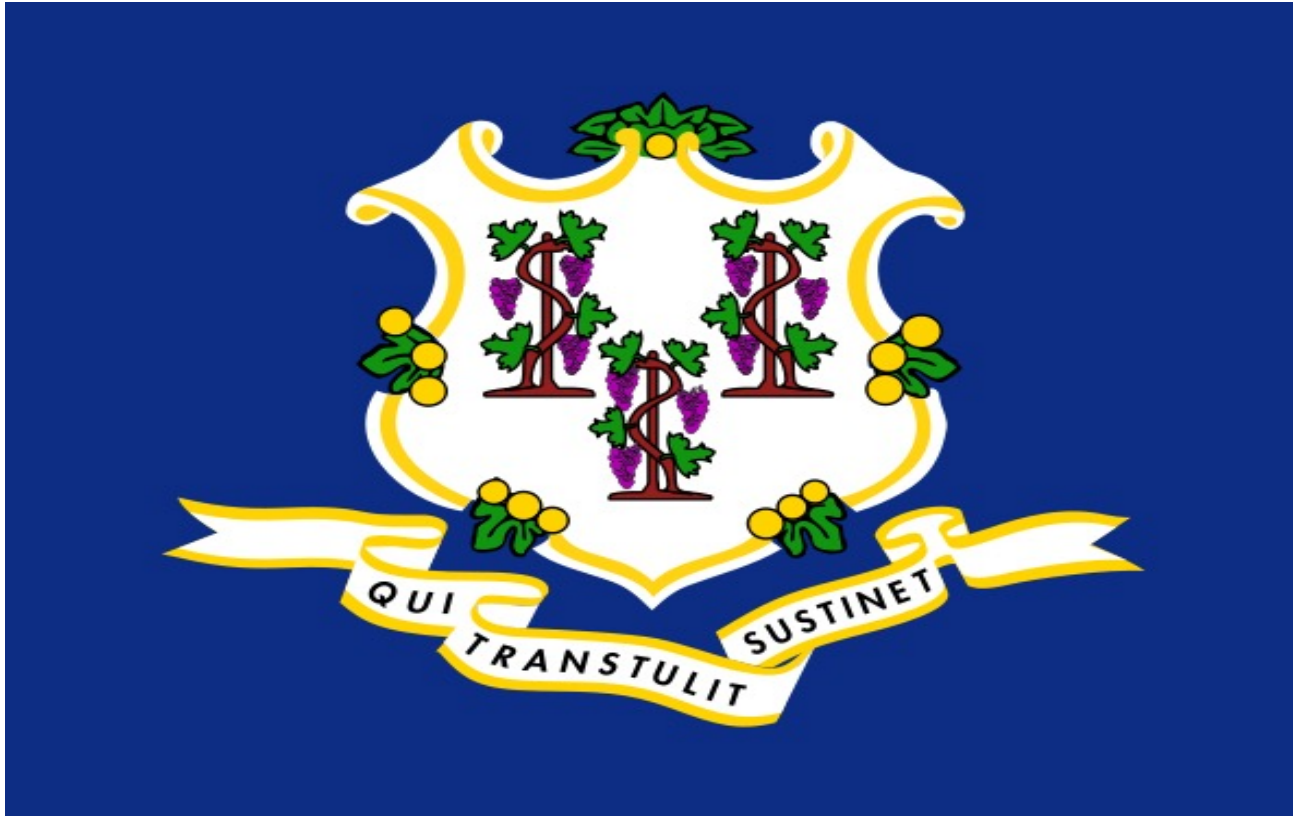


Bankruptcy Filing Trends in Connecticut



Prepared by: **The American Bankruptcy Institute**
<http://www.abi.org/>



AMERICAN
BANKRUPTCY
INSTITUTE

Updated
February 2024

Connecticut



State at a Glance		
	Connecticut	National
Population (7/1/2023)	3,617,176	334,914,895
- Change since April 2020	.3%	1.0%
- Foreign Born	15.0%	13.7%
Size (Square Miles)	4,842	3,533,038
Median Household Income	\$90,213	\$75,021
Persons per Household	2.48	2.57
Per Capita Income	\$52,034	\$41,261
Median Home Value	\$323,700	\$281,900
Homeownership Rate	66.2%	64.8%
High School Graduate (or Higher)	91.3%	89.1%
College Graduate (or Higher)	41.4%	34.3%
Disabled	8.0%	8.9%
No Health Insurance	6.1%	9.3%
In Poverty	9.8%	11.5%
Source: U.S. Census Bureau January 2024		

Bankruptcy Filings in Connecticut

Calendar Years 2000 - 2023

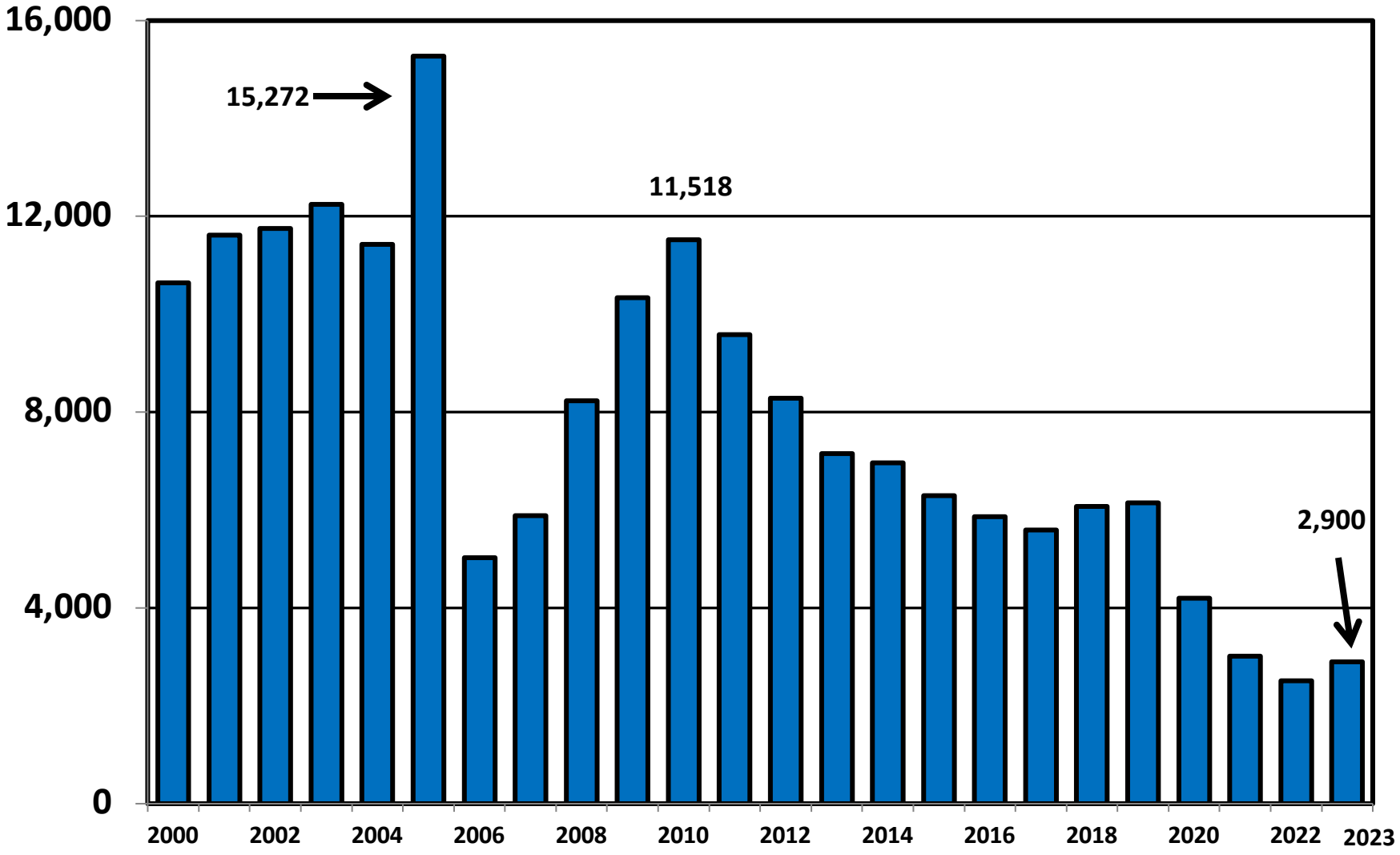
Year	Total	Chapter 7	Chapter 11	Chapter 13	Other Cases*
2023	2,900	2,315	18	567	0
2022	2,512	1,942	22	548	0
2021	3,018	2,601	15	402	0
2020	4,194	3,687	13	494	0
2019	6,148	4,915	46	1,185	2
2018	6,077	4,911	51	1,114	1
2017	5,595	4,438	45	1,110	2
2016	5,864	4,651	66	1,143	4
2015	6,294	5,091	92	1,110	1
2014	6,968	5,767	109	1,091	1
2013	7,154	6,078	95	980	1
2012	8,284	7,147	130	999	8
2011	9,579	8,534	121	923	1
2010	11,518	10,256	140	1,117	5
2009	10,334	9,015	139	1,179	1
2008	8,229	6,450	106	1,668	5
2007	5,890	4,148	116	1,626	0
2006	5,025	3,641	120	1,263	1
2005	15,272	13,546	46	1,673	7
2004	11,423	9,382	84	1,957	0
2003	12,246	10,050	103	2,088	5
2002	11,751	9,747	125	1,879	0
2001	11,613	9,993	88	1,530	2
2000	10,643	9,130	79	1,434	0
*Chapters 9, 12 and 15					

**Business Bankruptcy Cases Filed - Connecticut
Years Ended December 31, 2000 - 2023**

CALENDAR YEAR	TOTAL FILINGS	CHAPTER 7	CHAPTER 11	CHAPTER 13	OTHER CASES*
2023	89	66	14	9	0
2022	85	66	17	2	0
2021	71	56	11	4	0
2020	114	95	11	8	0
2019	189	134	40	13	2
2018	195	134	42	18	1
2017	179	131	37	9	2
2016	230	152	59	15	4
2015	249	156	82	10	1
2014	299	196	87	15	1
2013	306	210	83	12	1
2012	372	233	109	22	8
2011	388	272	93	22	1
2010	459	319	114	21	5
2009	467	324	121	21	1
2008	392	272	95	20	5
2007	264	148	106	10	0
2006	219	94	114	10	1
2005	156	117	31	1	7
2004	132	69	62	1	0
2003	187	89	87	7	4
2002	181	67	112	2	0
2001	156	81	72	1	2
2000	139	76	62	1	0
* Chapters 9, 12 and 15					

District of Connecticut

Total Bankruptcy Cases Filed Calendar Years 2000 - 2023



Total Filings Relative to Population 2000 - 2023



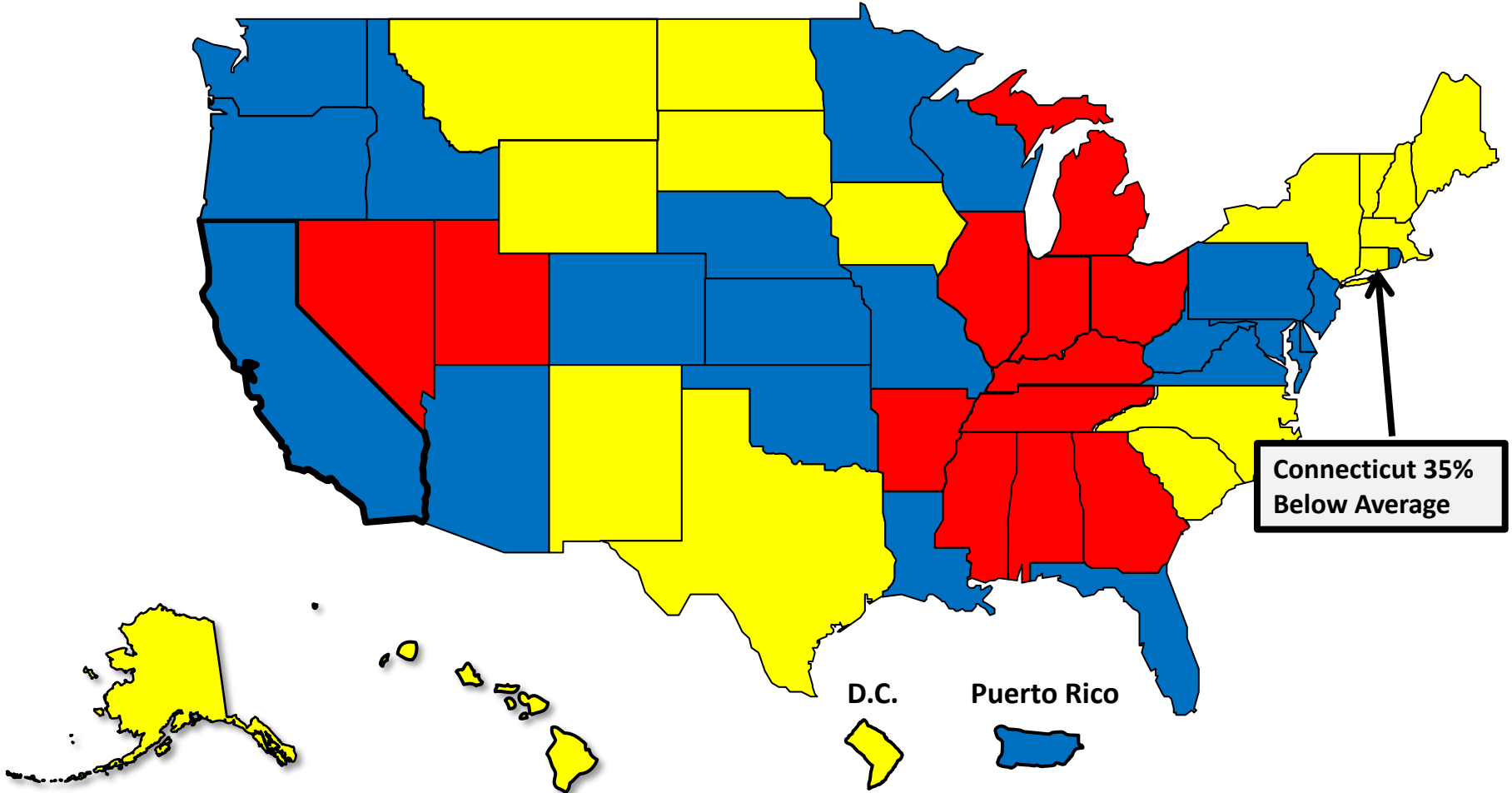
More than 25% Above Average



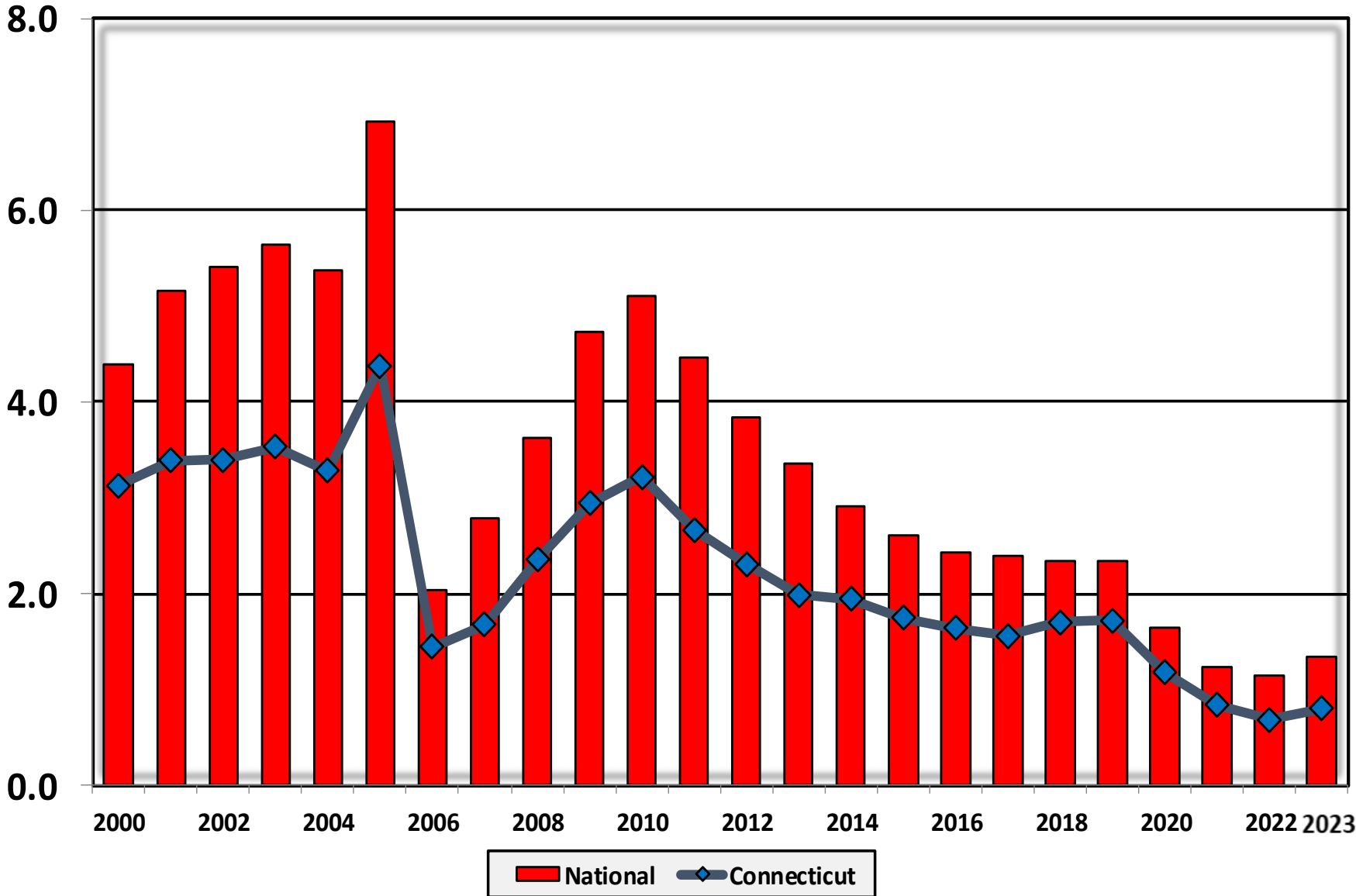
Within 25% of Average



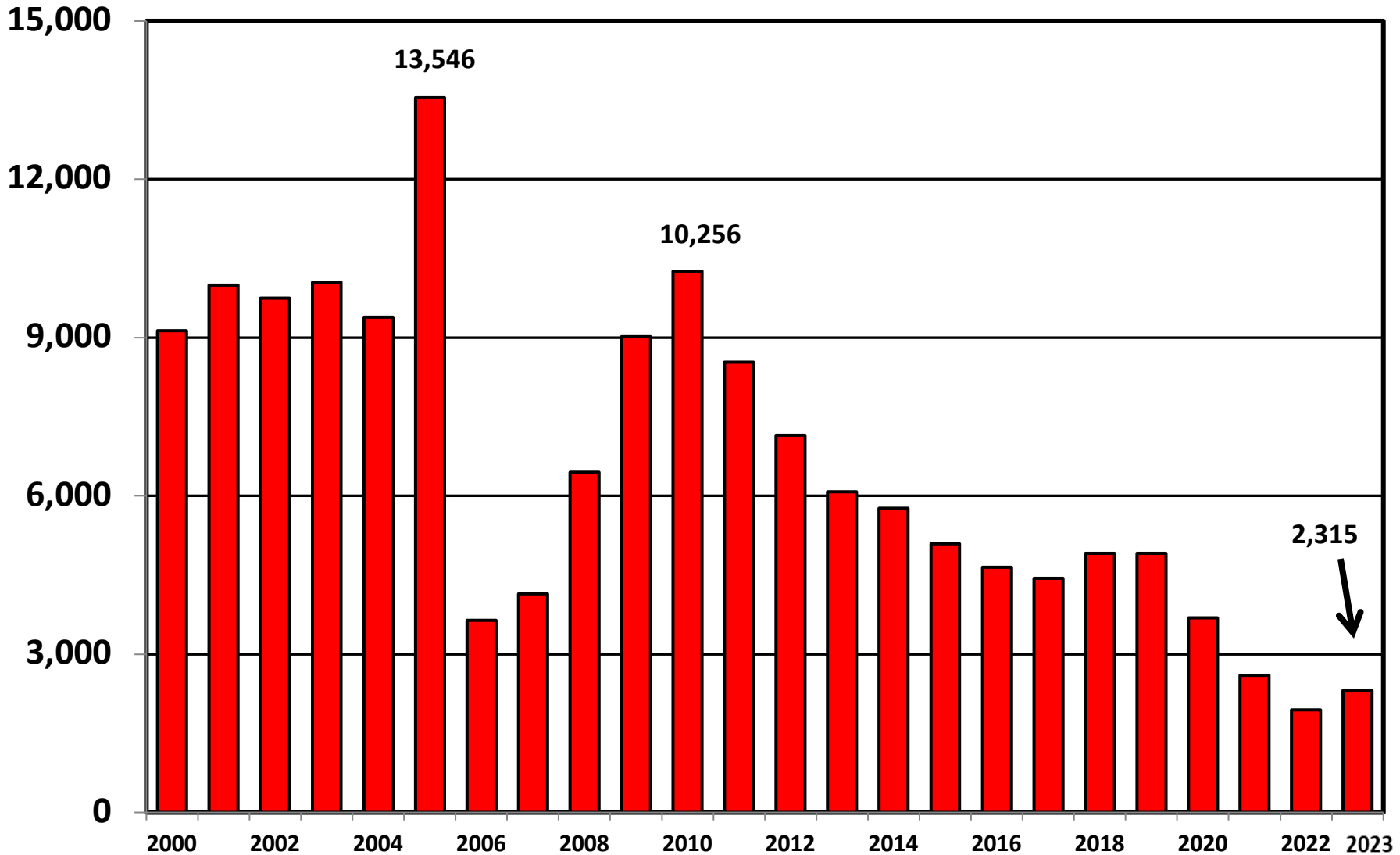
More than 25% Below Average



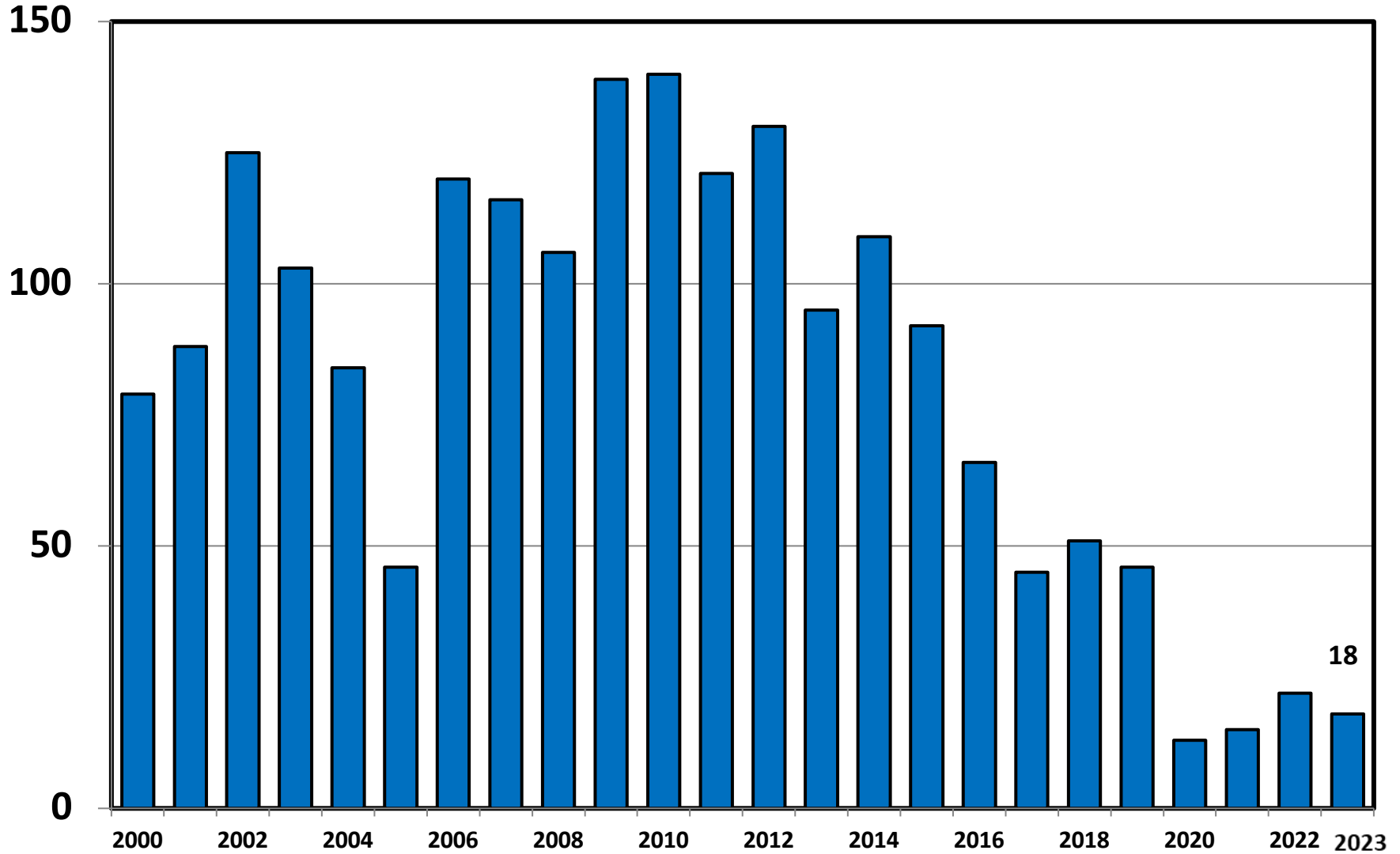
Bankruptcy Filings per 1,000 Population Connecticut vs. National Average 2000 - 2023



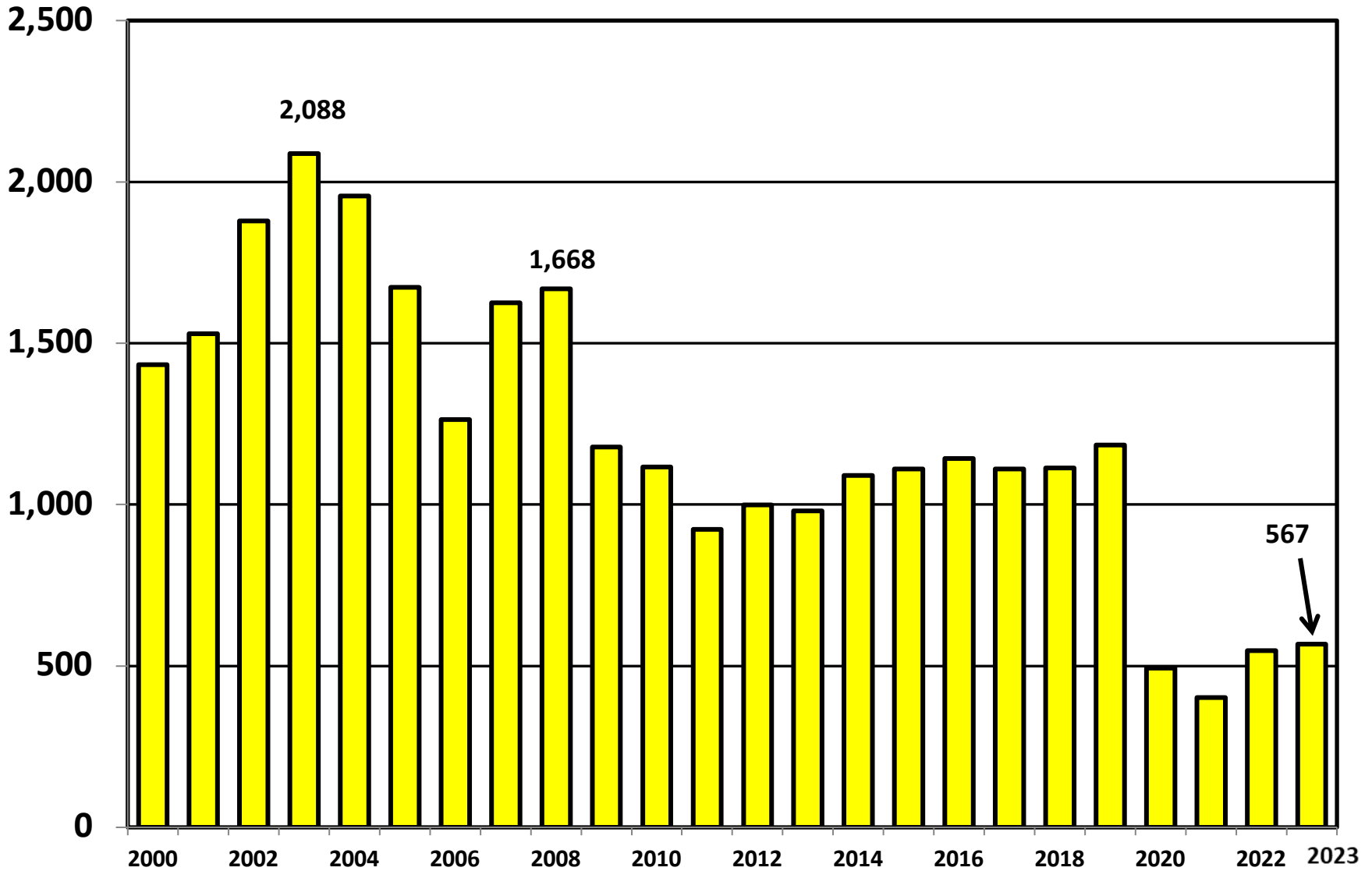
Chapter 7 Cases Filed In Connecticut Calendar Years 2000 - 2023



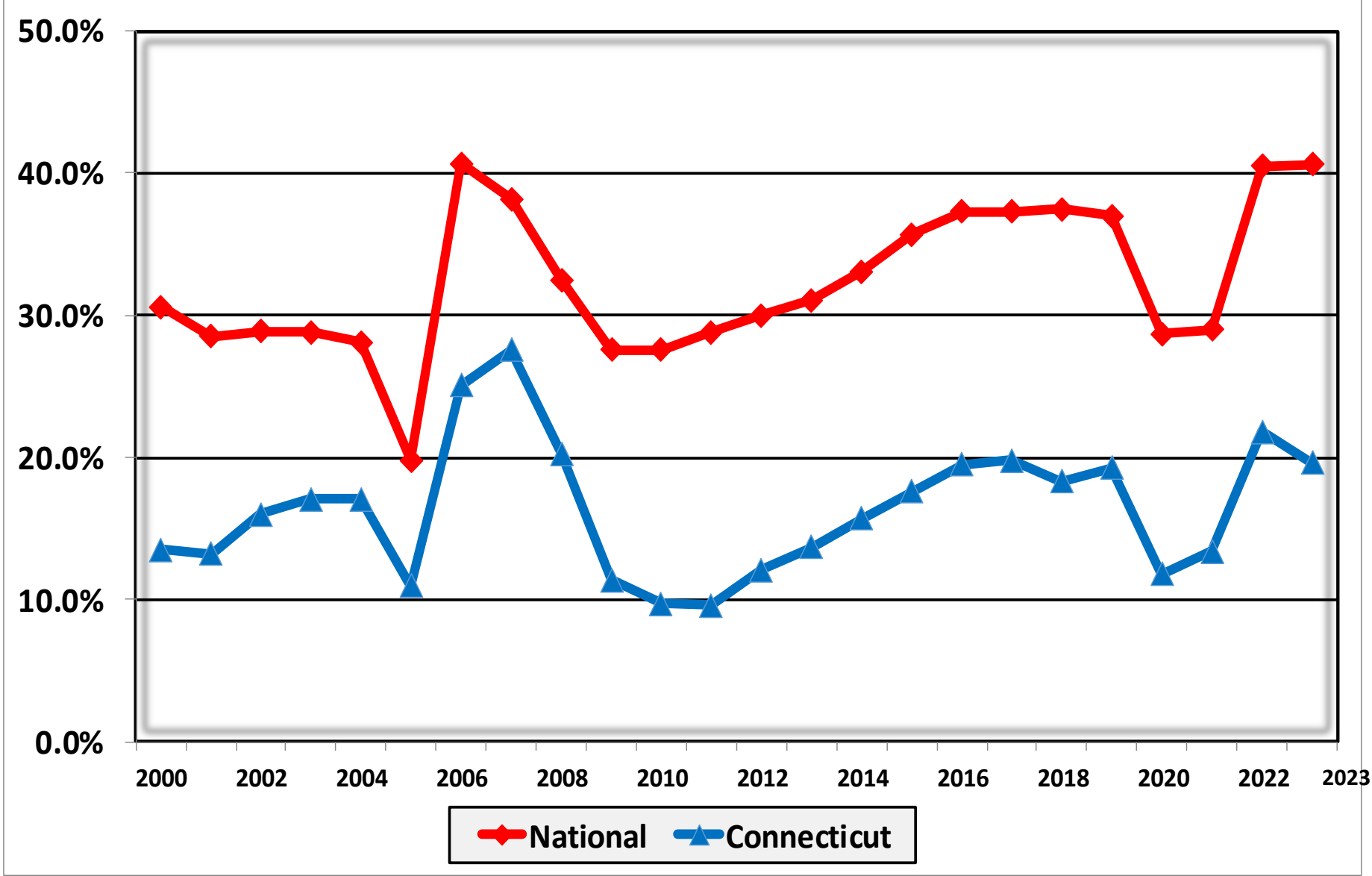
Chapter 11 Cases Filed in Connecticut 2000 - 2023



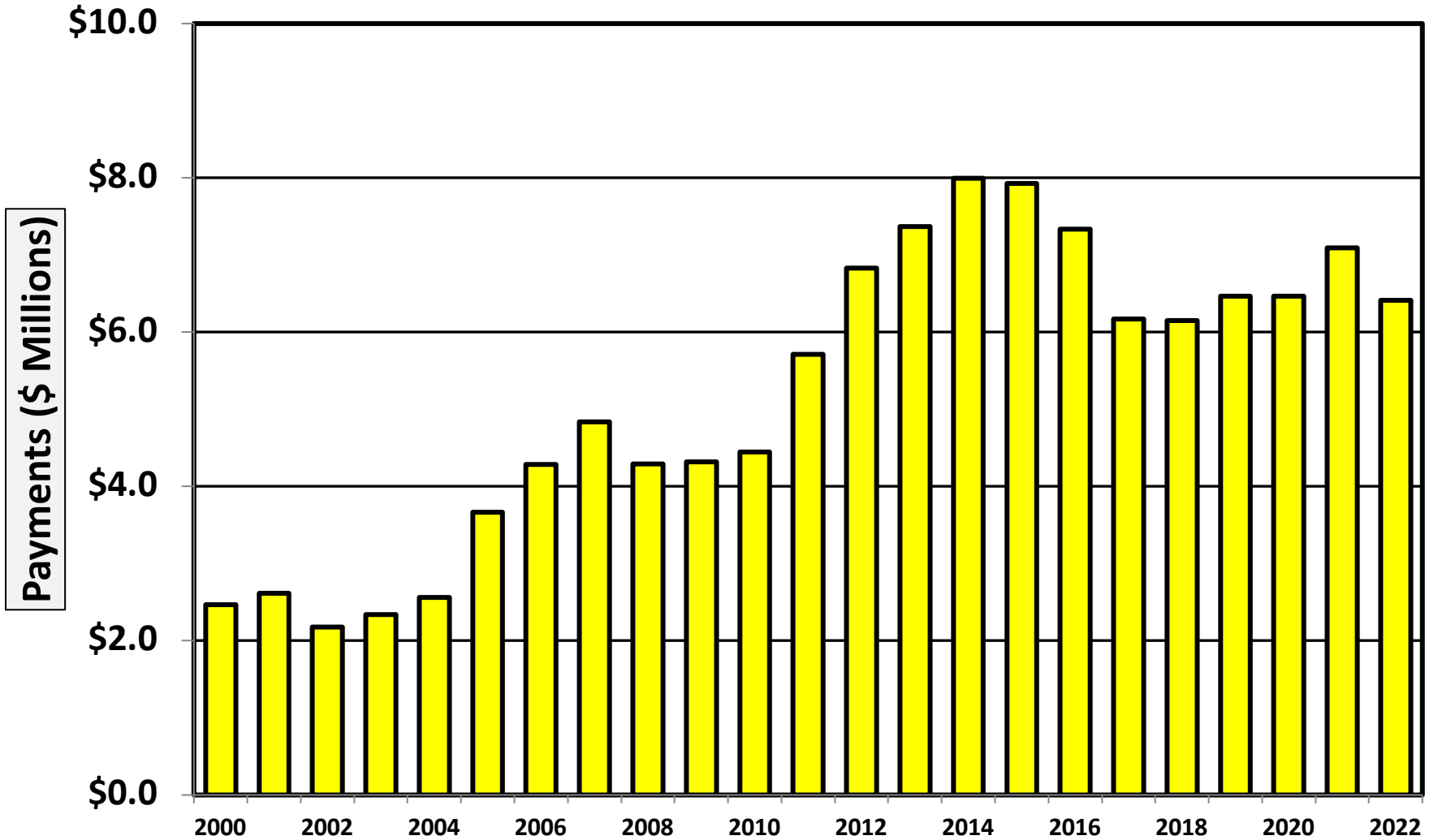
Chapter 13 Cases Filed in Connecticut 2000 - 2023



**Percent of Cases Filed as Chapter 13
Calendar Years 2000 - 2023**

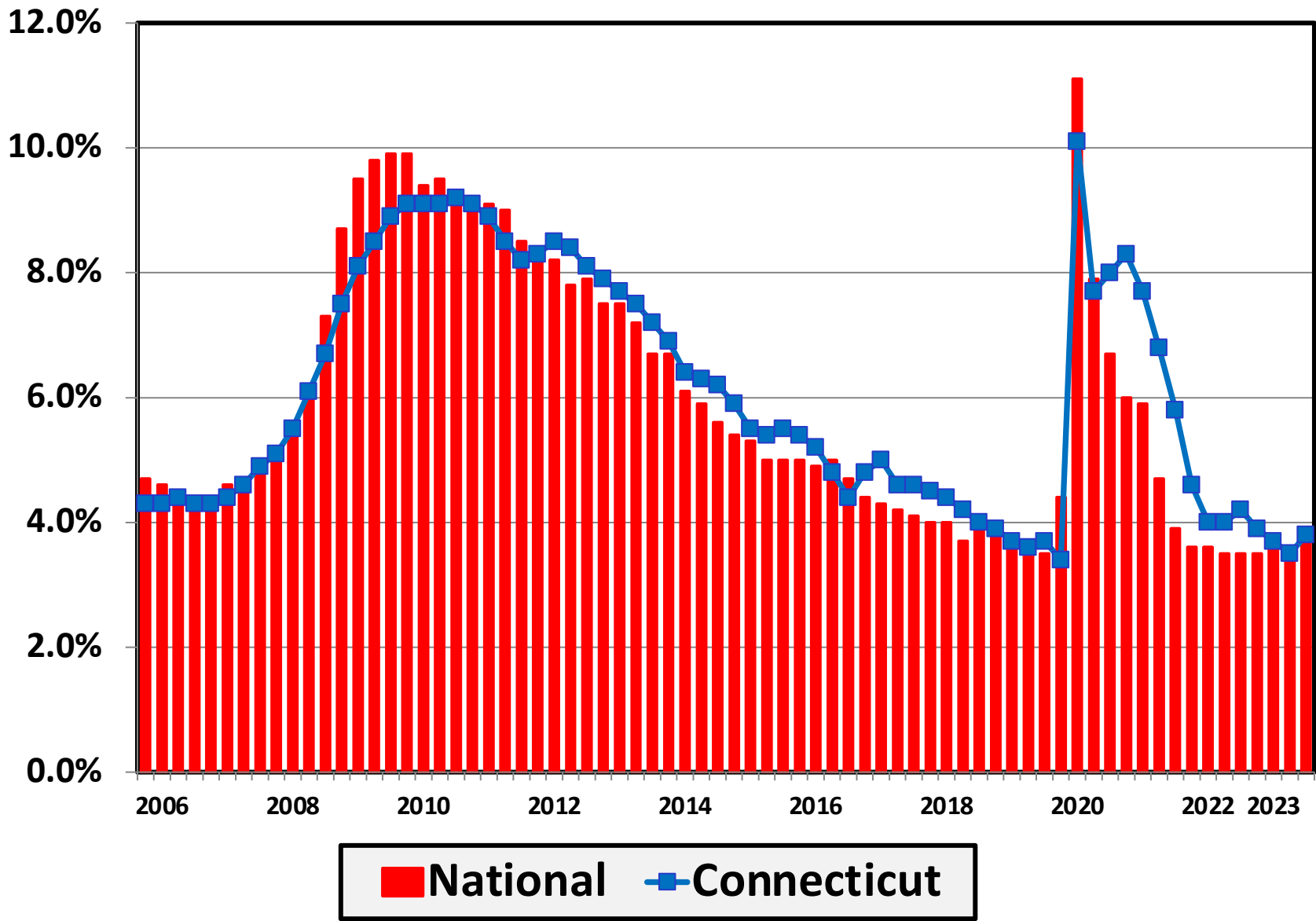


Chapter 13 Cases in Connecticut
Amount (in Millions) Paid to Unsecured Creditors
Fiscal Years 2000 - 2022



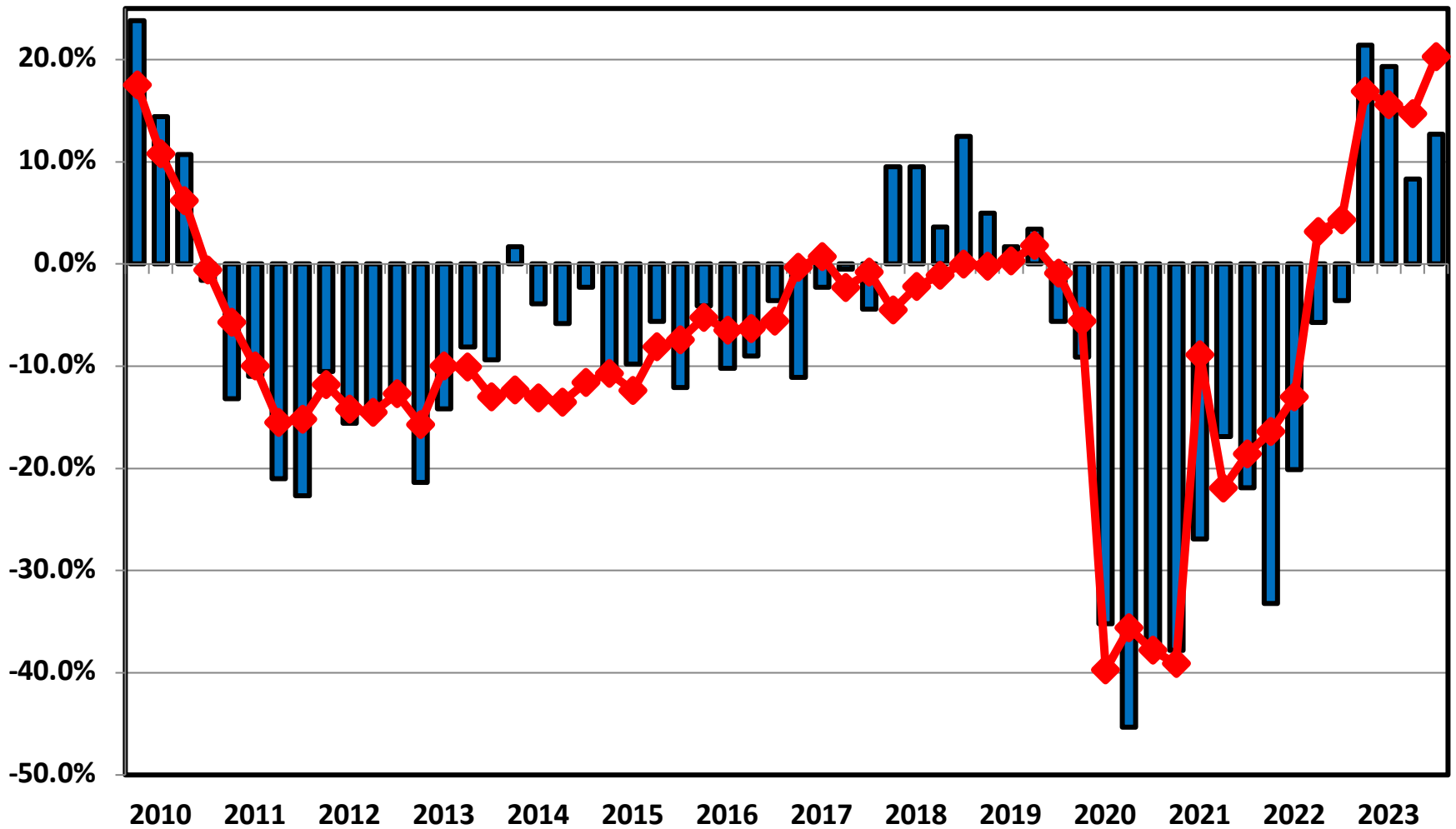
Source: Executive Office for United States Trustees

Unemployment Rate By Quarter 2006 - 2023



Source: Bureau of Labor Statistics

Filing Trends By Quarter Connecticut vs. National Average (Percent Change From Same Quarter One Year Prior)

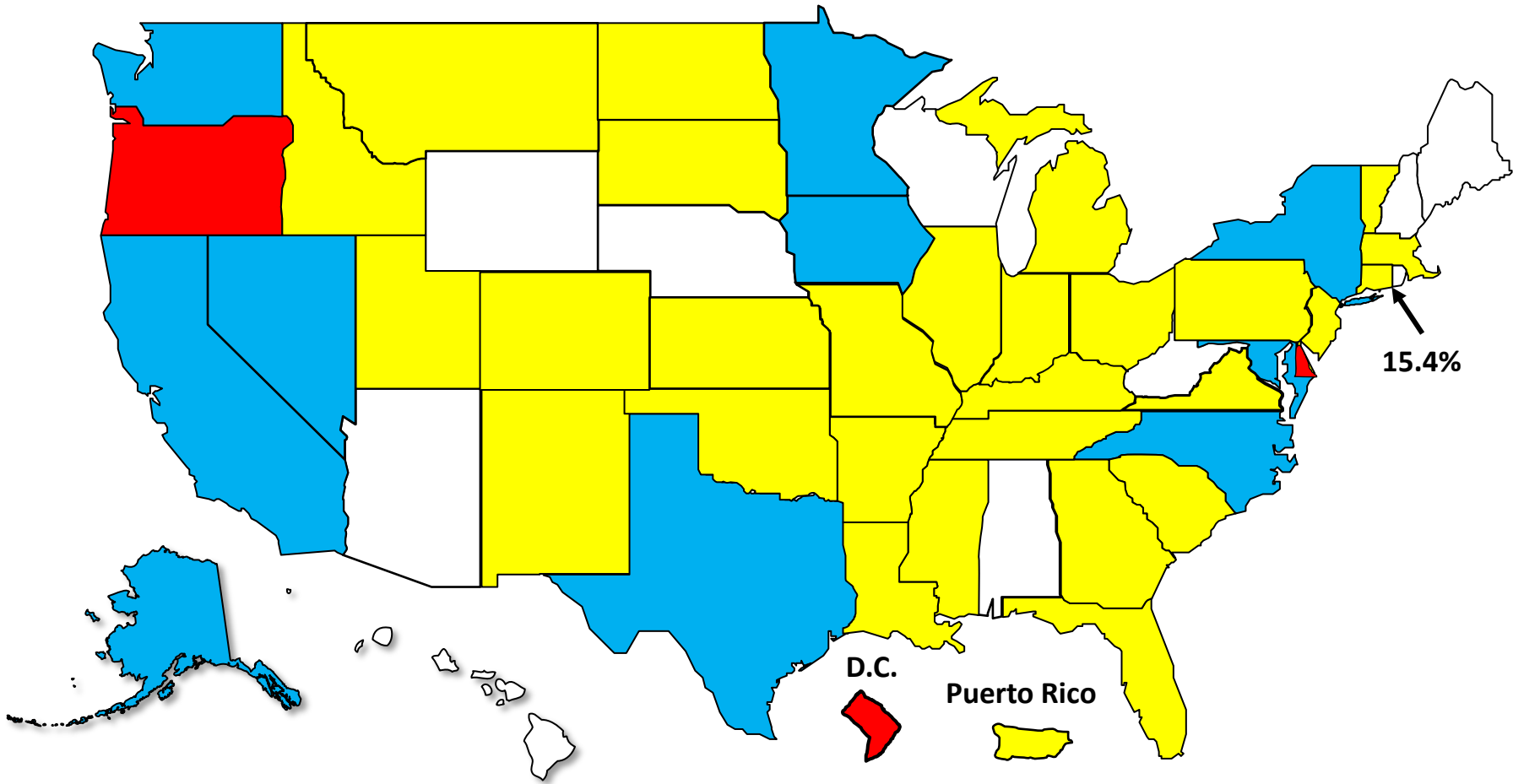


Connecticut
 National

Bankruptcy Filing Trends

Calendar Year 2023 vs. 2022

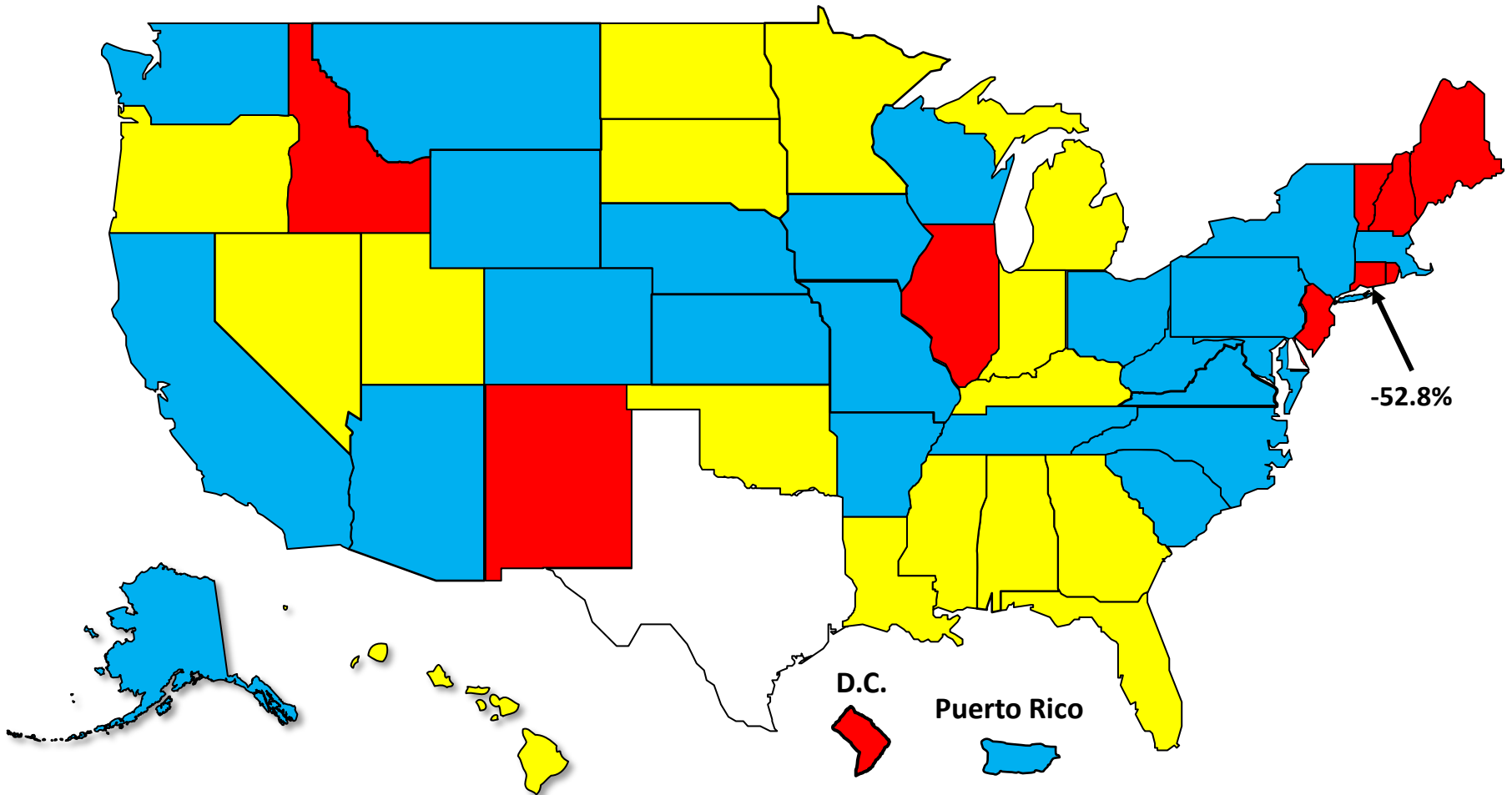
National Average = 16.8% Increase



Bankruptcy Filing Trends During the Pandemic Calendar Year 2023 vs. 2019

National Average = 41.5% Decrease

Decline Under 30.0% Decline 30.0% – 39.9% Decline 40.0% – 49.9% Decline 50.0% or More

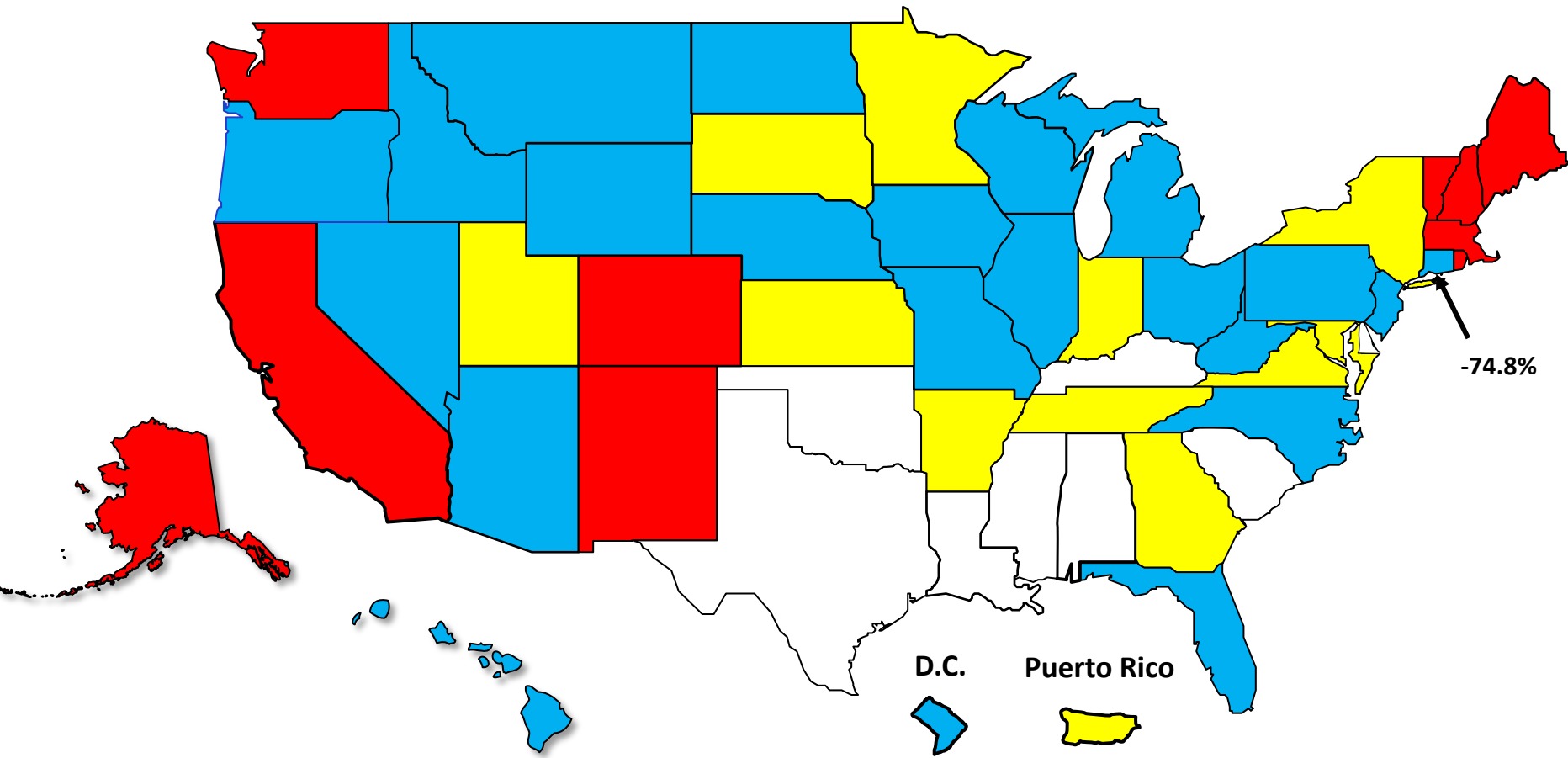


Percent Change in Total Filings

Calendar Year 2023 Compared to 2010 (Great Recession)

(National Average = 71.6% Decrease)

Amount of Decrease





AMERICAN
BANKRUPTCY
INSTITUTE

www.abi.org