

Bankruptcy Filing Trends in Georgia



Prepared by: **The American Bankruptcy Institute**
<http://www.abi.org/>



AMERICAN
BANKRUPTCY
INSTITUTE

Updated
February 2024

Georgia



AMERICAN
BANKRUPTCY
INSTITUTE

State at a Glance		
	Georgia	National
Population (7/1/2023)	11,029,227	334,914,895
- Change since April 2020	2.9%	1.0%
- Foreign Born	10.4%	13.7%
Size (Square Miles)	57,717	3,533,038
Median Household Income	\$71,535	\$75,021
Persons per Household	2.65	2.57
Per Capita Income	\$37,836	\$41,261
Median Home Value	\$245,900	\$281,900
Homeownership Rate	65.0%	64.8%
High School Graduate (or Higher)	88.7%	89.1%
College Graduate (or Higher)	33.6%	34.3%
Disabled	9.1%	8.9%
No Health Insurance	13.6%	9.3%
In Poverty	12.7%	11.5%
Source: U.S. Census Bureau January 2024		

Prepared by: The American Bankruptcy Institute

<http://www.abi.org>

Bankruptcy Filings in Georgia
Calendar Years 2000 - 2023

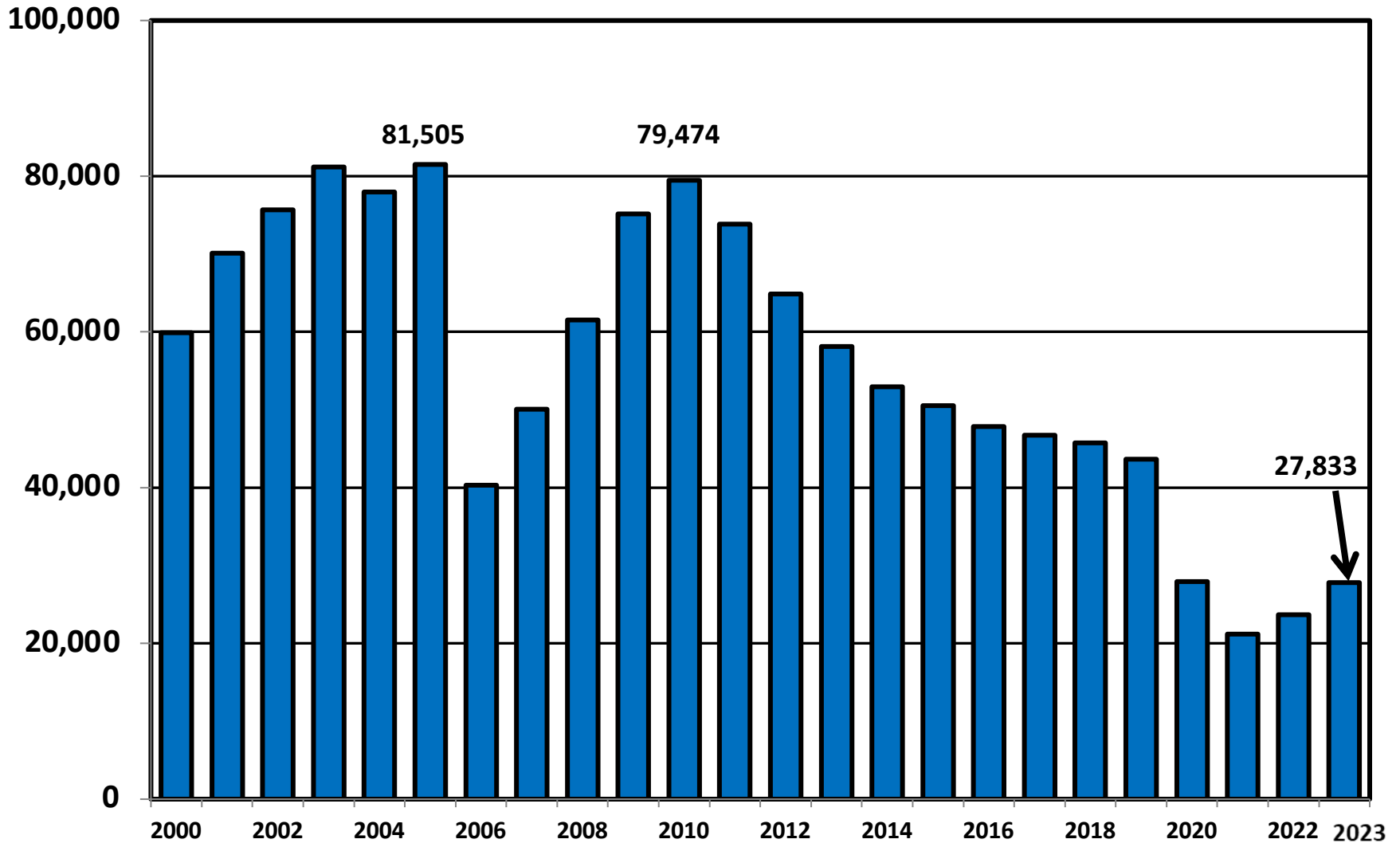
Year	Total	Chapter 7	Chapter 11	Chapter 13	Other Cases*
2023	27,833	10,666	204	16,925	38
2022	23,716	8,940	163	14,603	10
2021	21,196	10,056	145	10,985	10
2020	27,953	13,861	165	13,905	22
2019	43,663	18,614	219	24,789	41
2018	45,726	19,587	199	25,914	26
2017	46,718	20,491	158	26,027	42
2016	47,831	20,613	169	27,013	36
2015	50,556	22,037	176	28,307	36
2014	52,969	24,040	213	28,690	26
2013	58,117	28,041	327	29,731	18
2012	64,883	31,705	355	32,791	32
2011	73,852	36,309	430	37,068	45
2010	79,474	42,116	513	36,792	53
2009	75,145	40,557	498	34,047	43
2008	61,524	27,886	463	33,153	22
2007	50,092	20,357	265	29,460	10
2006	40,290	15,312	227	24,727	24
2005	81,505	46,246	265	34,977	17
2004	77,960	36,253	299	41,400	8
2003	81,205	37,220	268	43,677	40
2002	75,713	32,200	312	43,189	12
2001	70,095	28,117	270	41,676	32
2000	59,927	21,985	265	37,664	13
*Chapters 9, 12 and 15					

Business Bankruptcy Cases Filed - Georgia
Years Ended December 31, 2000 - 2023

CALENDAR YEAR	TOTAL FILINGS	CHAPTER 7	CHAPTER 11	CHAPTER 13	OTHER CASES*
2023	710	429	189	54	38
2022	506	310	153	33	10
2021	475	295	140	30	10
2020	660	438	156	44	22
2019	863	551	207	64	41
2018	813	520	189	78	26
2017	790	536	139	73	42
2016	938	654	161	87	36
2015	903	633	165	69	36
2014	1,155	835	200	94	26
2013	1,481	1,030	314	119	18
2012	1,899	1,396	332	139	32
2011	2,242	1,631	397	169	45
2010	2,650	1,957	474	166	53
2009	3,019	2,276	454	246	43
2008	2,237	1,484	435	296	22
2007	1,456	845	239	362	10
2006	1,148	552	200	372	24
2005	2,232	1,454	233	528	17
2004	2,090	1,093	264	725	8
2003	1,585	863	248	434	40
2002	1,359	724	278	345	12
2001	1,162	541	249	341	31
2000	1,012	466	253	280	13
* Chapters 9, 12 and 15					

Total Bankruptcy Cases Filed in Georgia

Calendar Years 2000 - 2023



Total Filings Relative to Population 2000 - 2023



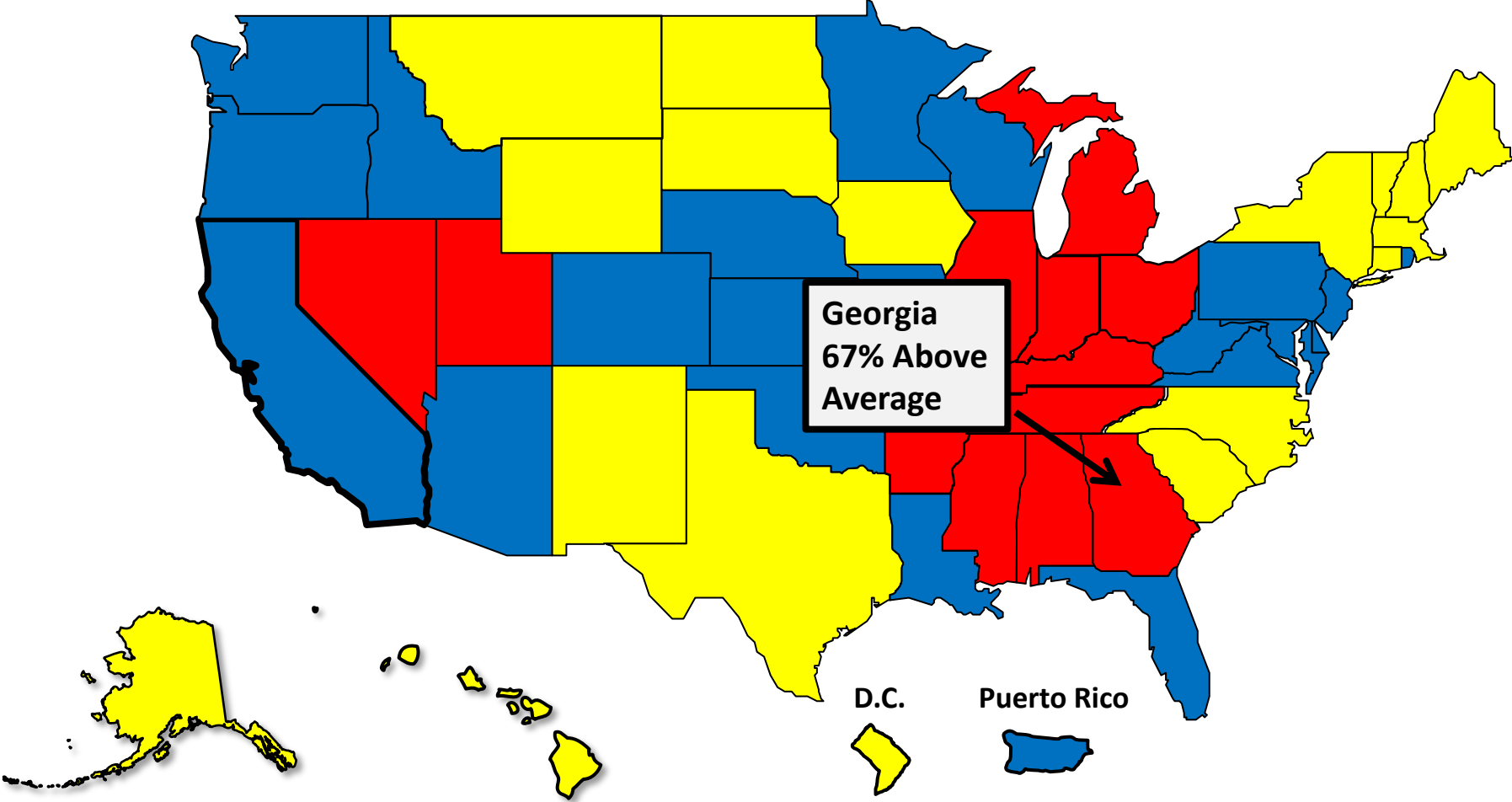
More than 25%
Above Average



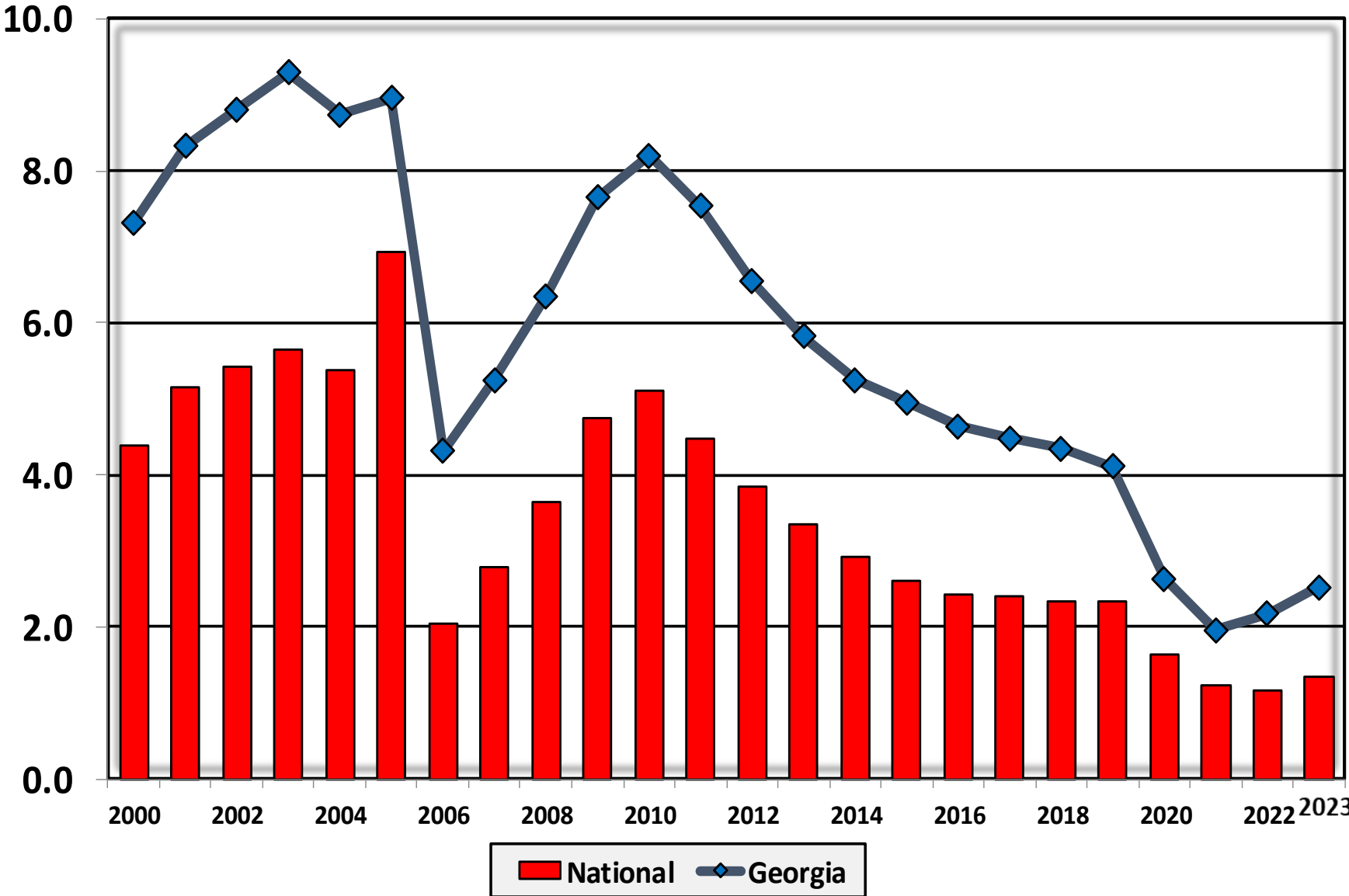
Within 25%
of Average



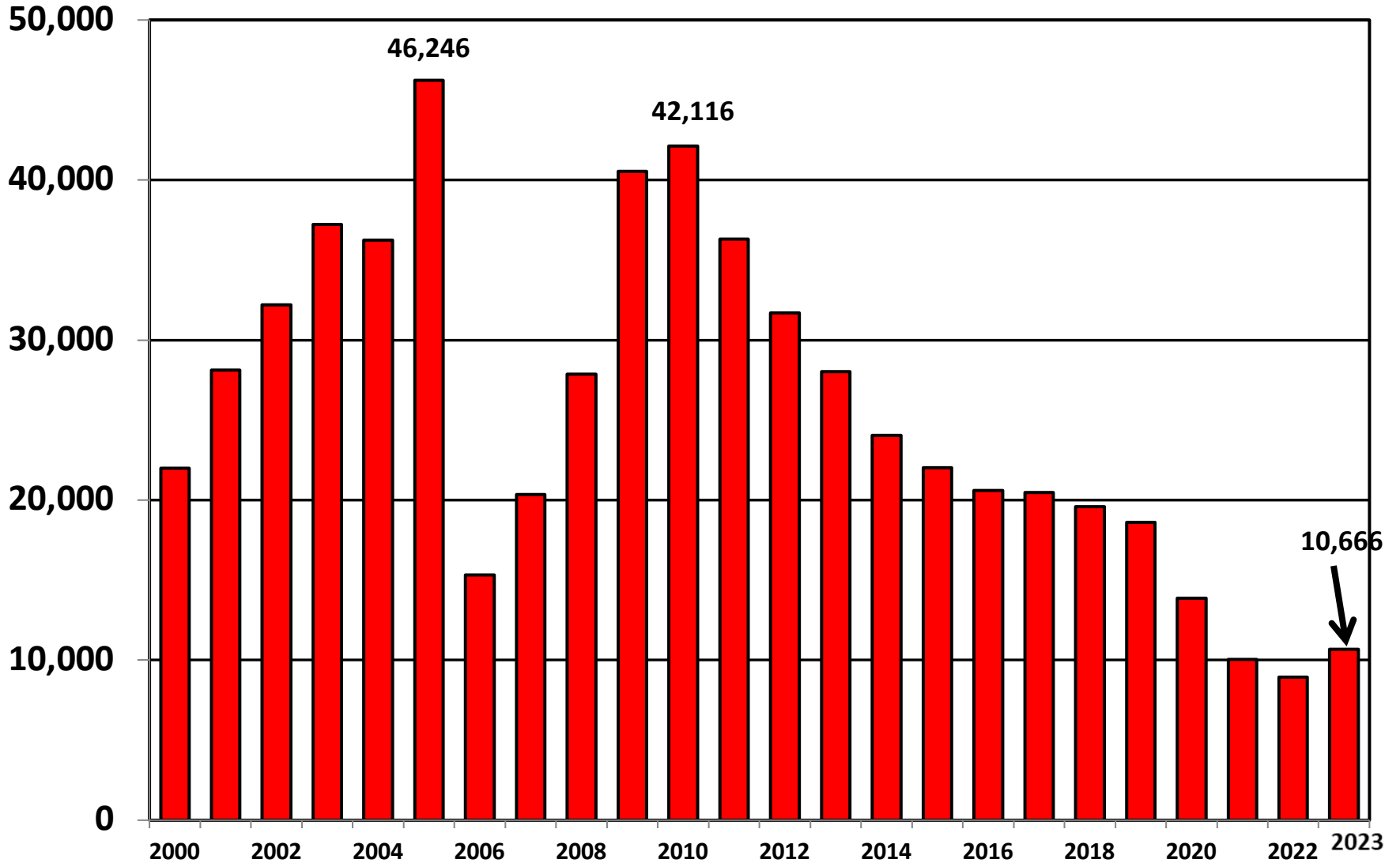
More than 25%
Below Average



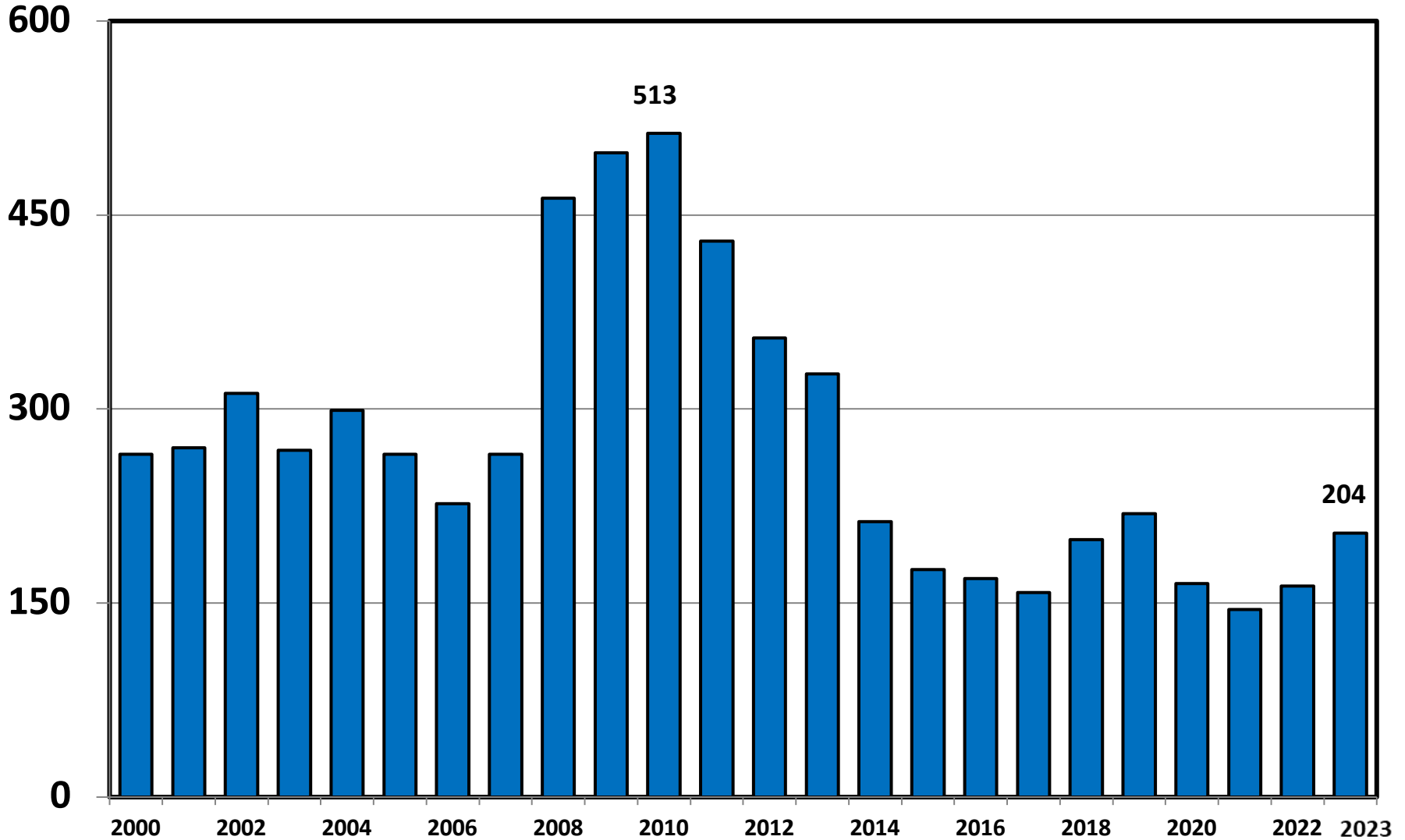
Bankruptcy Filings per 1,000 Population Georgia vs. National Average 2000 - 2023



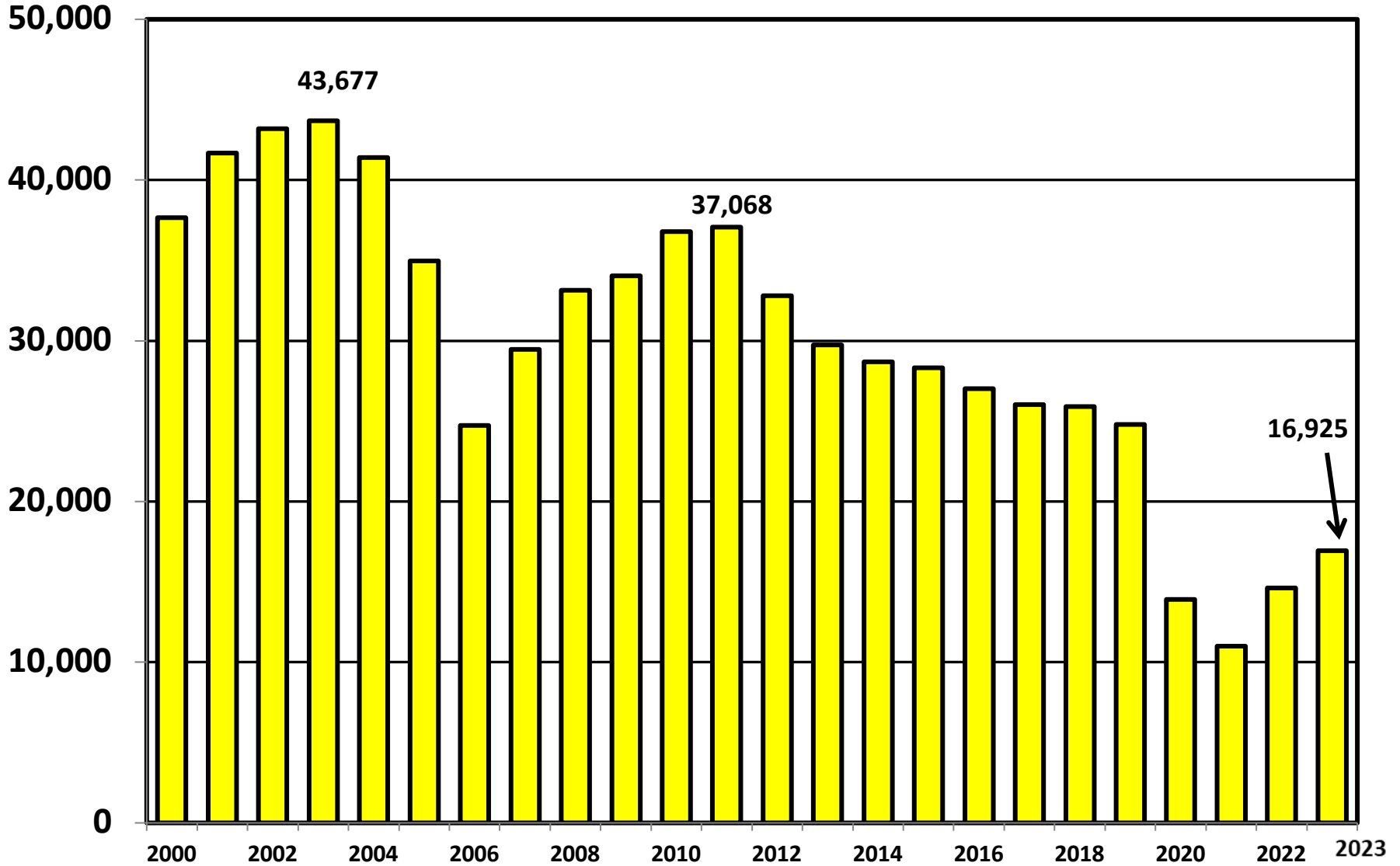
Chapter 7 Cases Filed In Georgia Calendar Years 2000 - 2023



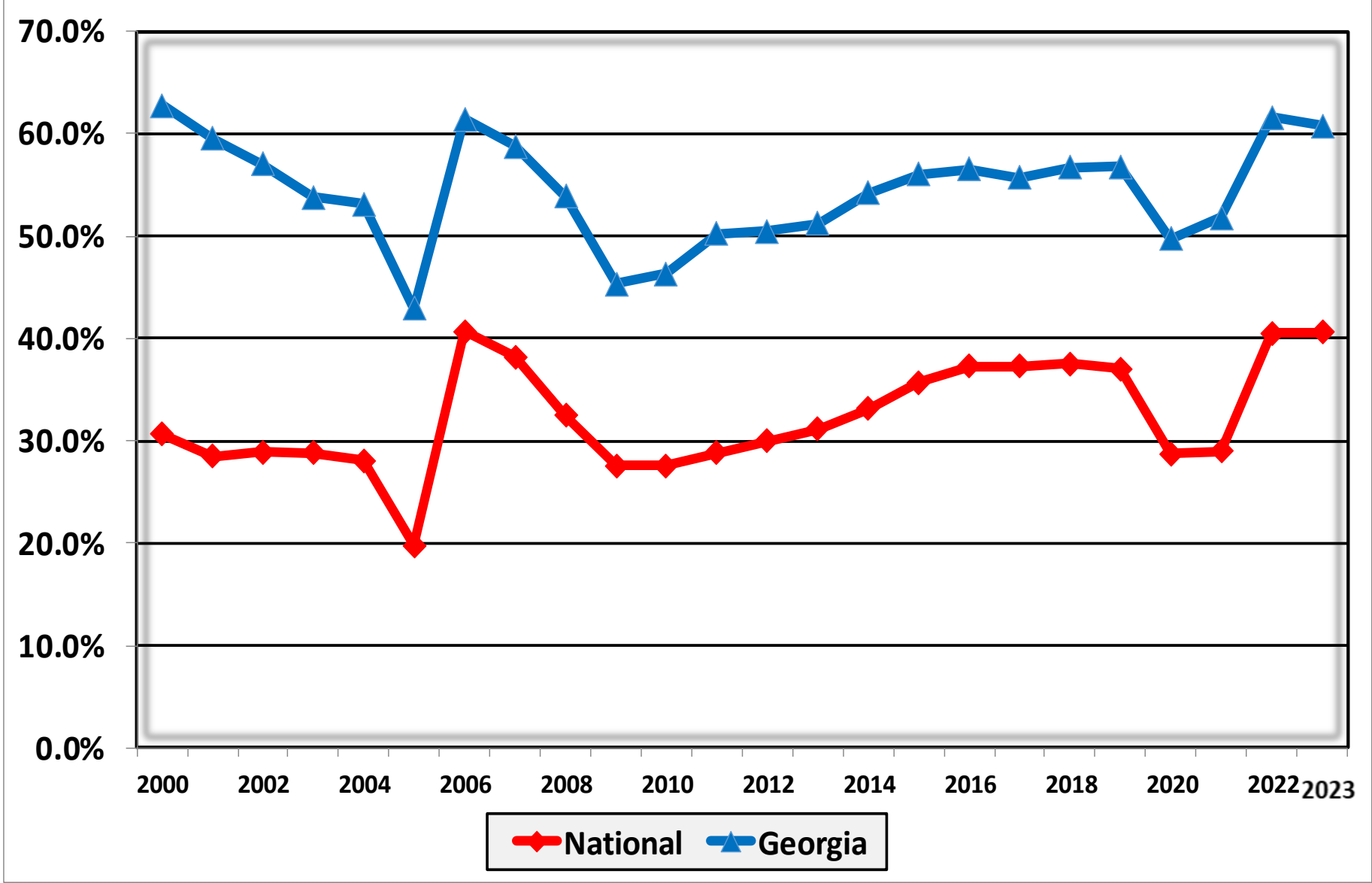
Chapter 11 Cases Filed in Georgia 2000 - 2023



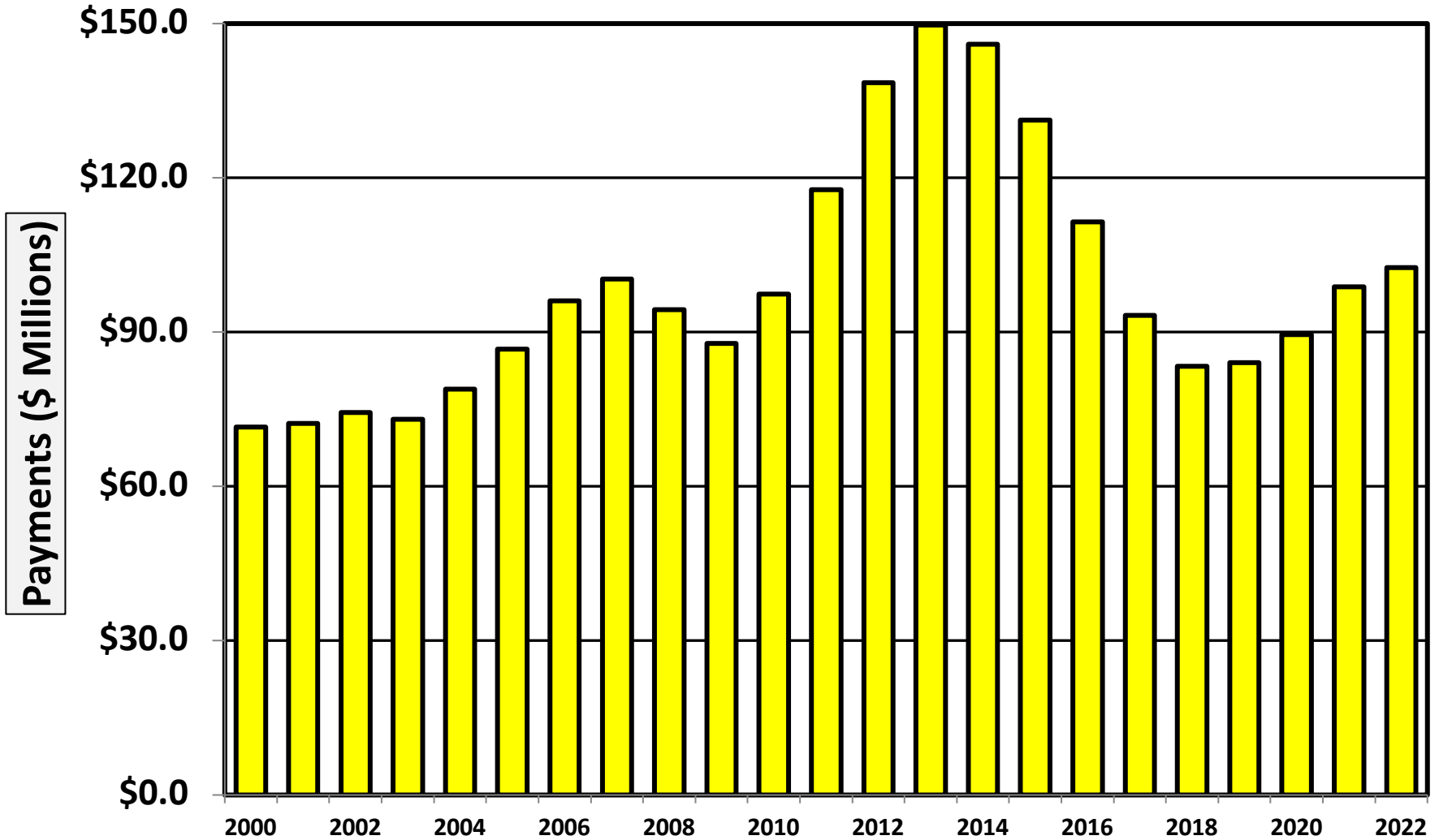
Chapter 13 Cases Filed in Georgia 2000 - 2023



**Percent of Cases Filed as Chapter 13
Calendar Years 2000 - 2023**

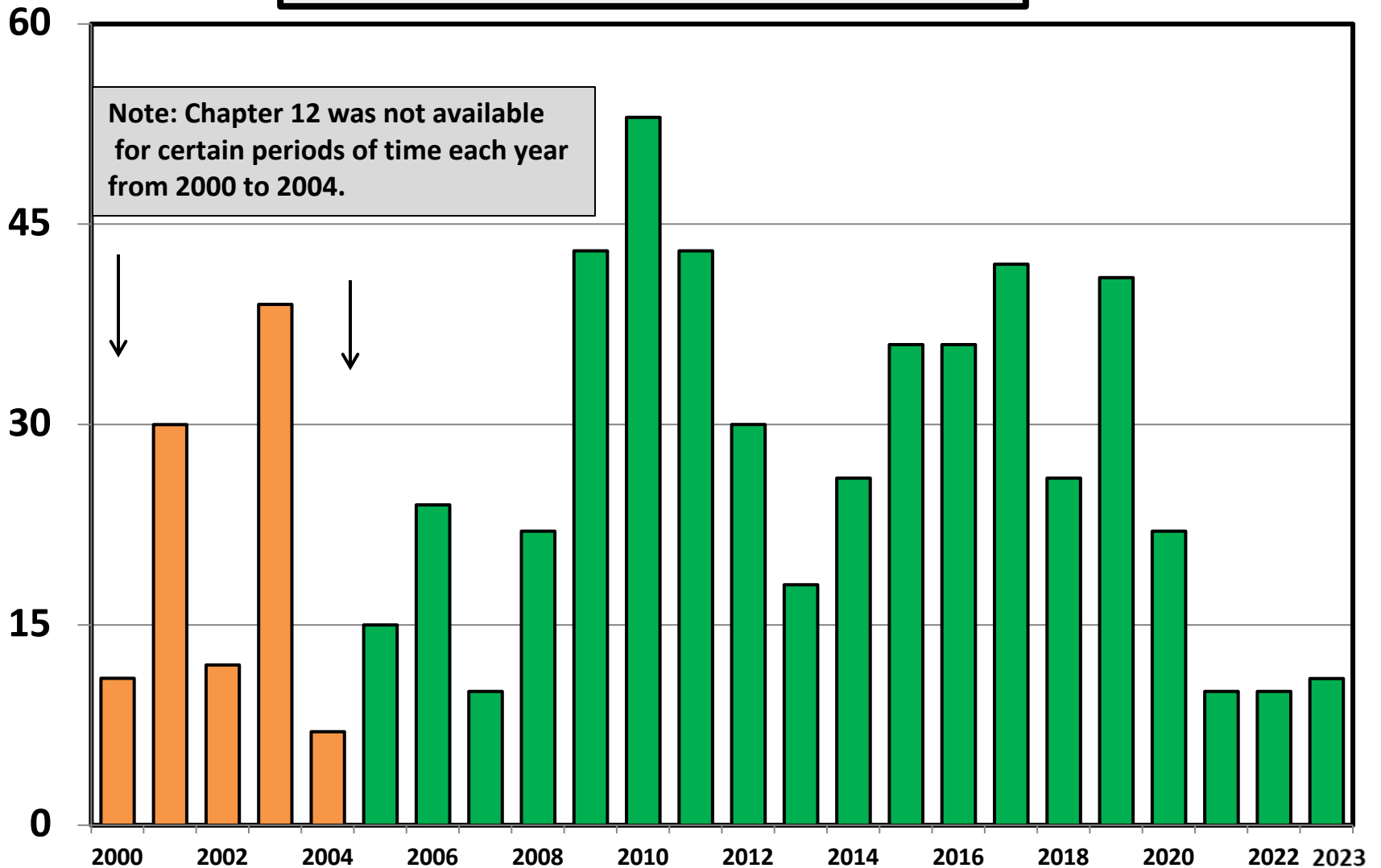


Chapter 13 Cases in Georgia
Amount (in Millions) Paid to Unsecured Creditors
Fiscal Years 2000 - 2022

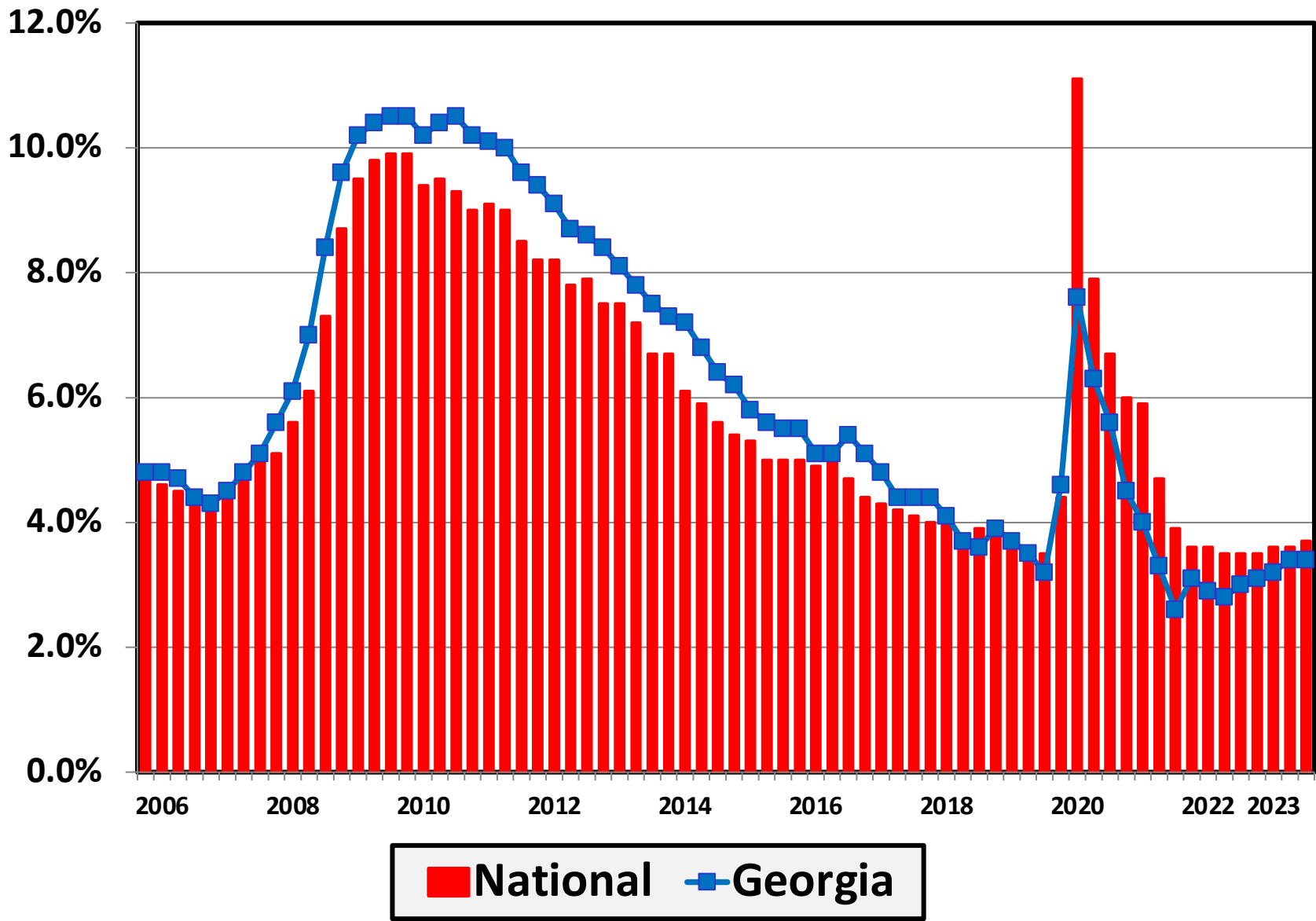


Source: Executive Office for United States Trustees

Chapter 12 Cases Filed in Georgia 2000 - 2023



Unemployment Rate By Quarter 2006 - 2023

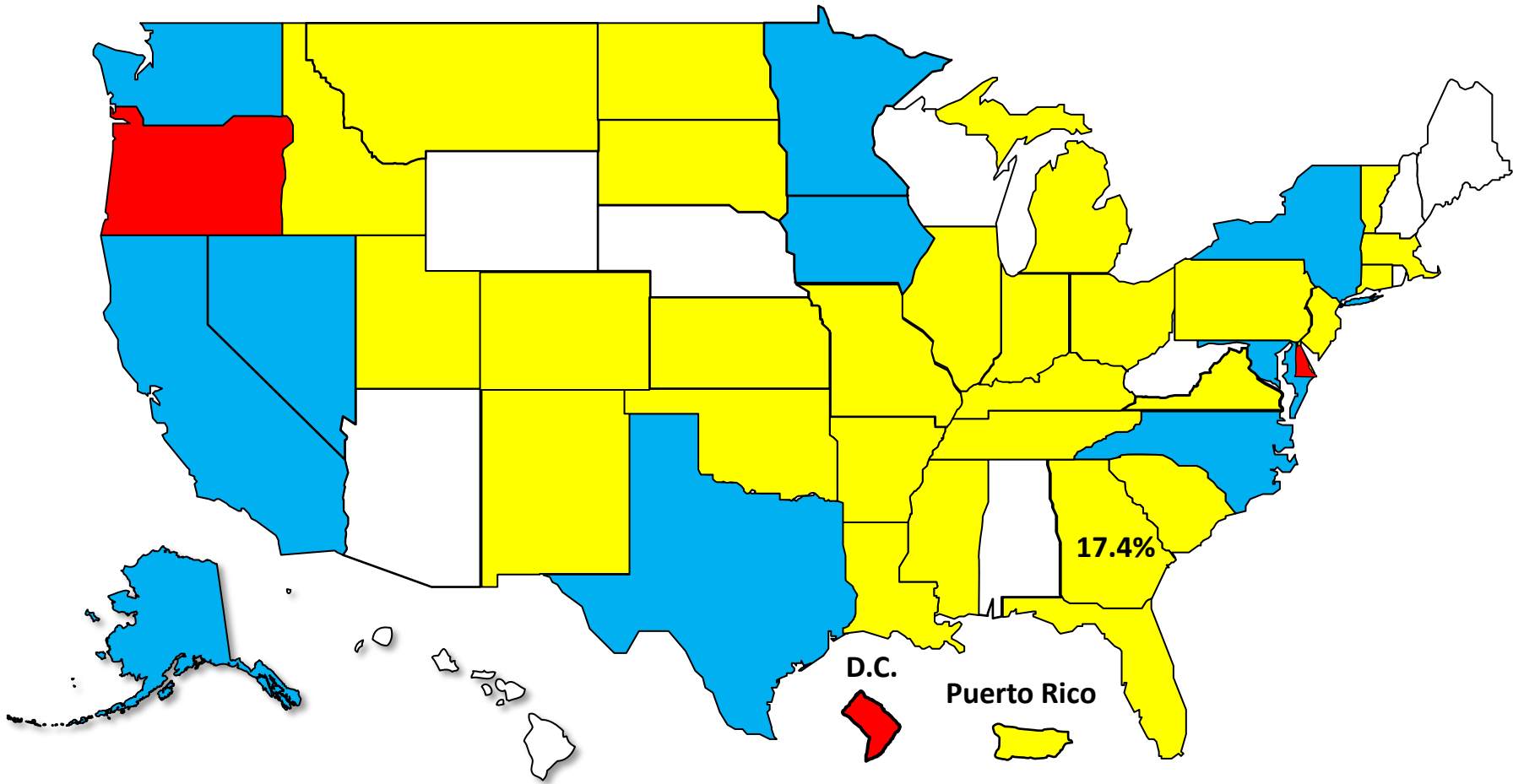


Source: Bureau of Labor Statistics

Bankruptcy Filing Trends

Calendar Year 2023 vs. 2022

National Average = 16.8% Increase

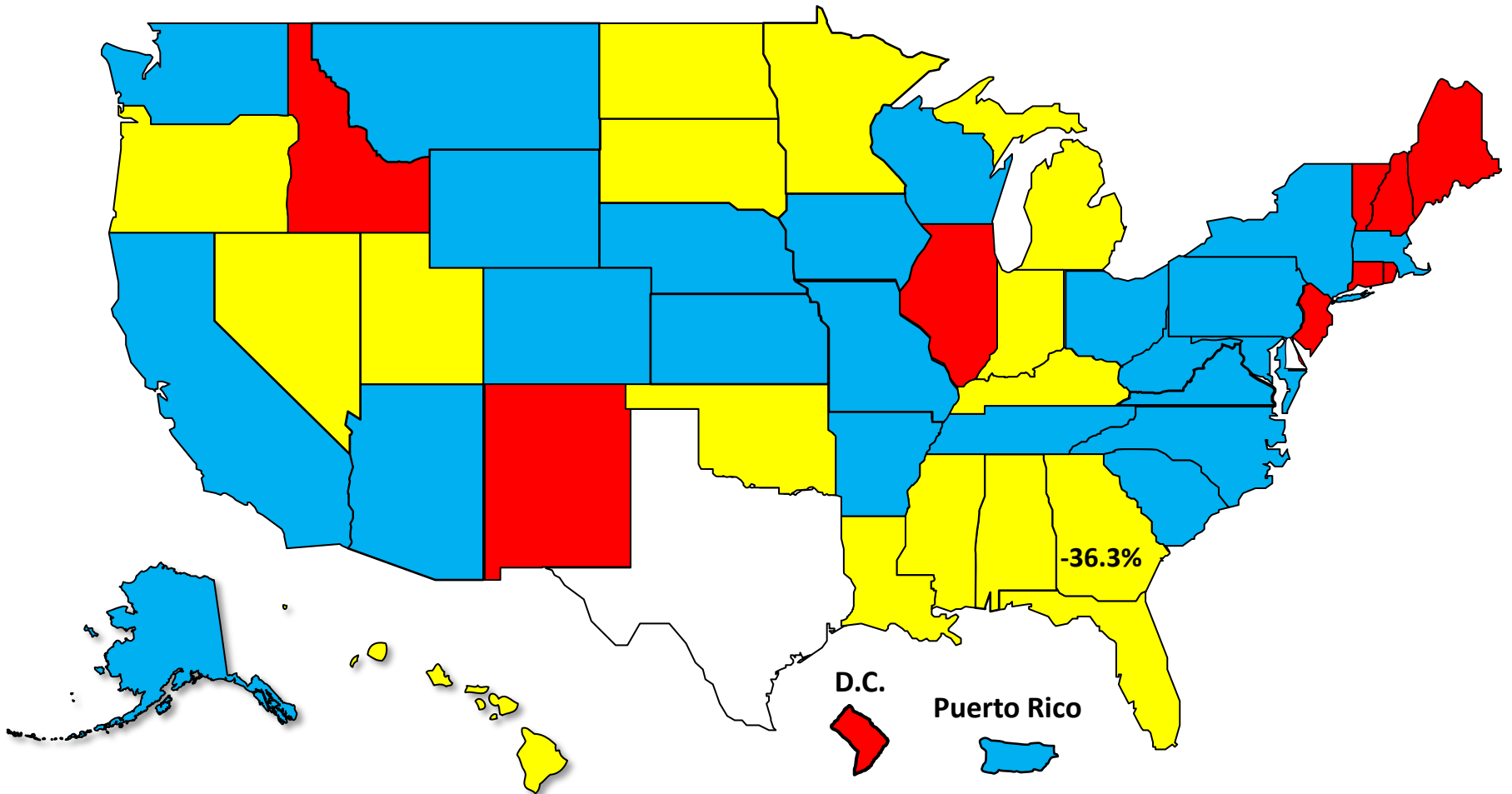


Bankruptcy Filing Trends During the Pandemic

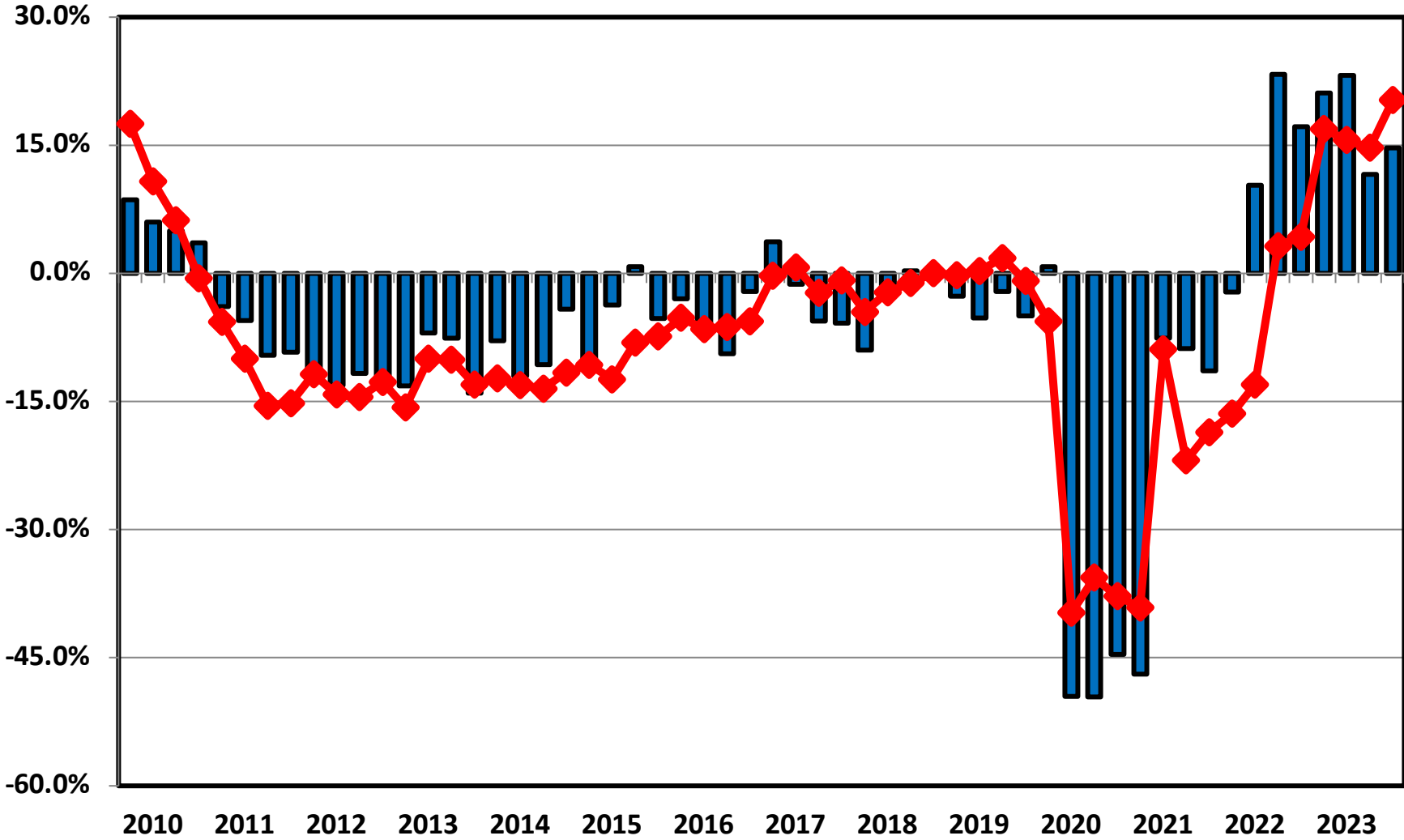
Calendar Year 2023 vs. 2019

National Average = 41.5% Decrease

 Decline Under 30.0%  Decline 30.0% – 39.9%  Decline 40.0% – 49.9%  Decline 50.0% or More



**Filing Trends By Quarter Georgia vs. National Average
(Percent Change From Same Quarter One Year Prior)**



■ Georgia ◆ National

Percent Change in Total Filings

Calendar Year 2023 Compared to 2010 (Great Recession)

(National Average = 71.6% Decrease)

Amount of Decrease



Under 60%



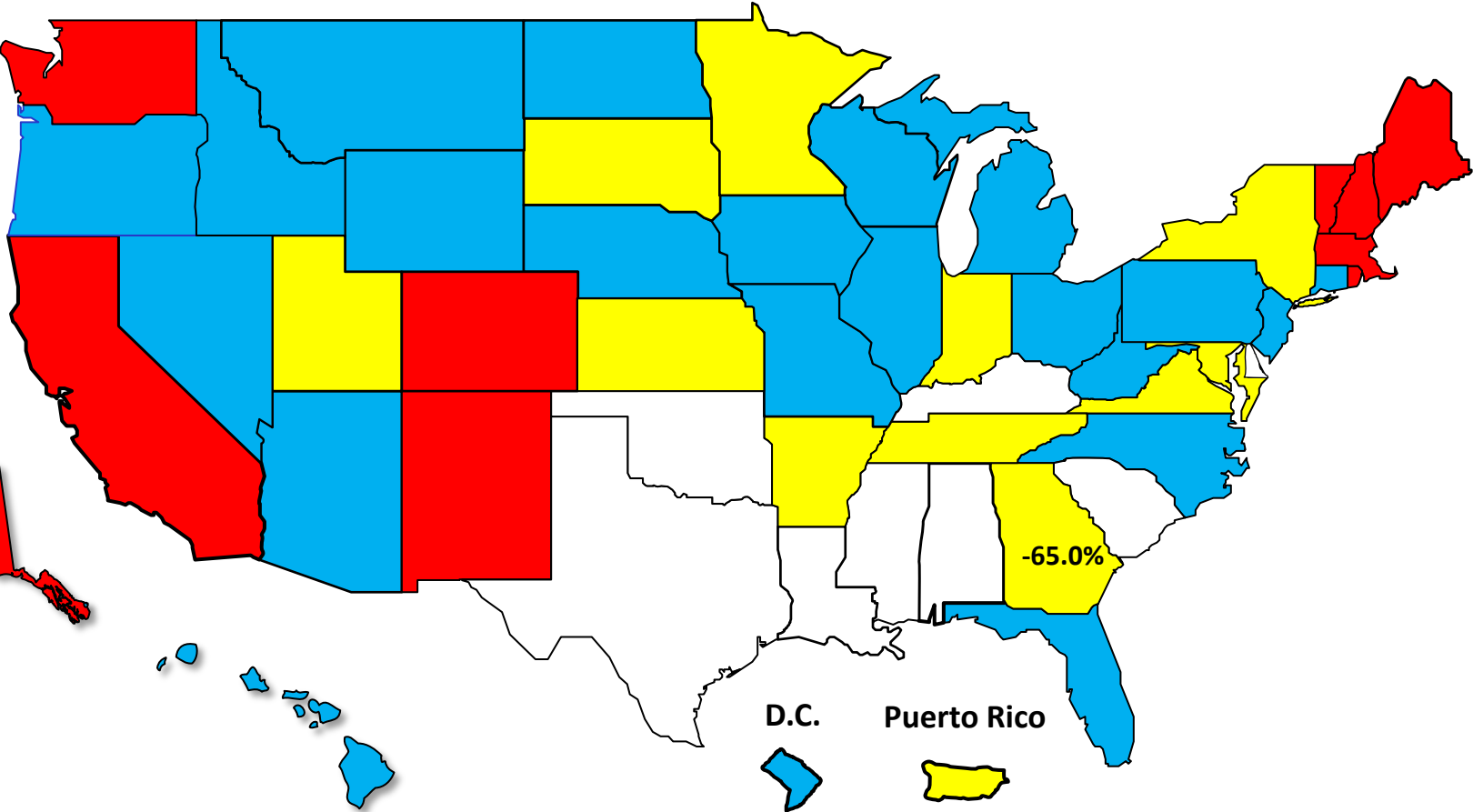
60.0% - 69.9%



70.0% - 79.9%



80.0% or More





AMERICAN
BANKRUPTCY
INSTITUTE

www.abi.org