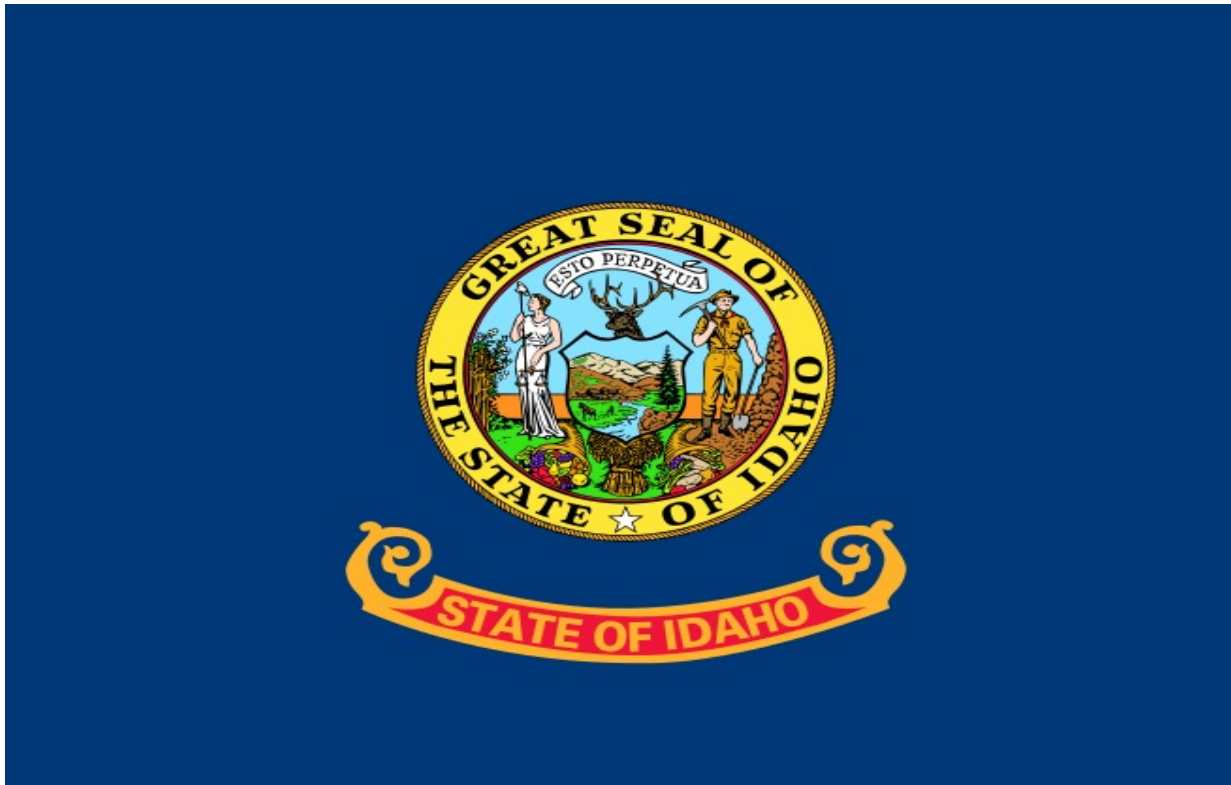


Bankruptcy Filing Trends in Idaho



Prepared by: **The American Bankruptcy Institute**
<http://www.abi.org/>



AMERICAN
BANKRUPTCY
INSTITUTE

Updated
February 2024

Idaho



AMERICAN
BANKRUPTCY
INSTITUTE

State at a Glance

	Idaho	National
Population (7/1/2023)	1,964,726	334,914,895
- Change since April 2020	6.8%	1.0%
- Foreign Born	5.7%	13.7%
Size (Square Miles)	82,645	3,533,038
Median Household Income	\$70,214	\$75,021
Persons per Household	2.67	2.57
Per Capita Income	\$34,919	\$41,261
Median Home Value	\$331,600	\$281,900
Homeownership Rate	72.0%	64.8%
High School Graduate (or Higher)	91.4%	89.1%
College Graduate (or Higher)	30.2%	34.3%
Disabled	9.7%	8.9%
No Health Insurance	9.7%	9.3%
In Poverty	10.7%	11.5%

Source: U.S. Census Bureau January 2024

Prepared by: The American Bankruptcy Institute

<http://www.abi.org>

**Bankruptcy Filings in Idaho
Calendar Years 2000 - 2023**

Year	Total	Chapter 7	Chapter 11	Chapter 13	Other Cases*
2023	1,714	1,504	14	194	2
2022	1,521	1,326	15	179	1
2021	2,000	1,814	11	173	2
2020	2,772	2,498	24	240	10
2019	3,665	3,285	15	355	10
2018	3,724	3,300	24	394	6
2017	3,808	3,348	22	432	6
2016	3,840	3,404	14	416	6
2015	3,970	3,544	18	404	4
2014	4,742	4,246	19	471	6
2013	5,574	5,067	24	478	5
2012	6,322	5,612	33	665	12
2011	7,666	6,722	54	875	15
2010	8,355	7,284	62	997	12
2009	7,704	6,789	51	854	10
2008	5,300	4,450	26	815	9
2007	3,838	3,074	20	739	5
2006	2,931	2,335	15	570	11
2005	11,967	10,642	18	1,298	9
2004	9,488	8,208	28	1,251	1
2003	9,660	8,368	44	1,225	23
2002	8,913	7,632	53	1,214	14
2001	8,265	7,012	81	1,163	9
2000	7,119	5,721	47	1,327	24
*Chapters 9, 12 and 15					

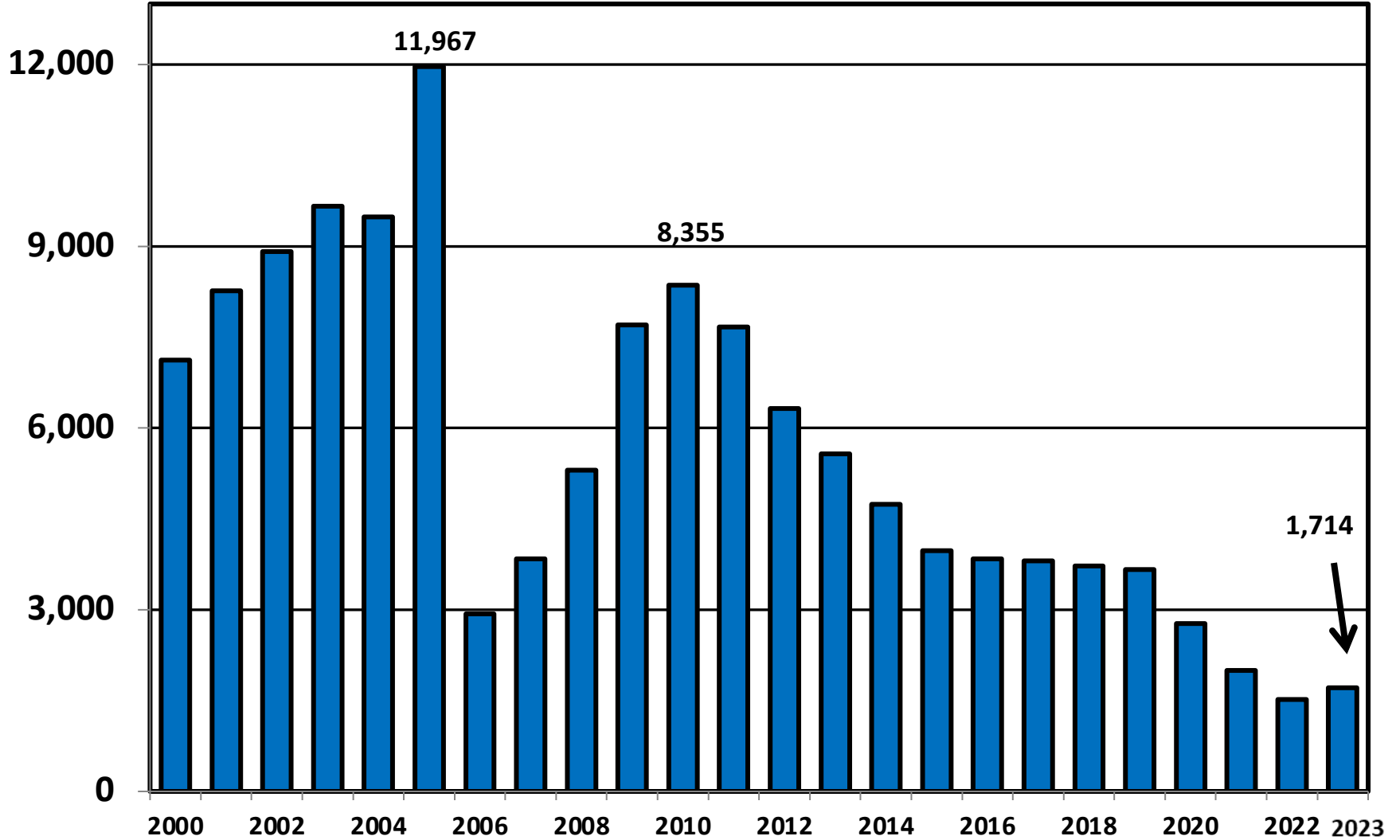
Business Bankruptcy Cases Filed - Idaho
Years Ended December 31, 2000 - 2023

CALENDAR YEAR	TOTAL FILINGS	CHAPTER 7	CHAPTER 11	CHAPTER 13	OTHER CASES*
2023	47	31	12	2	2
2022	42	28	12	1	1
2021	51	38	10	1	2
2020	83	50	22	1	10
2019	85	61	10	4	10
2018	94	67	18	3	6
2017	117	89	18	4	6
2016	102	80	12	4	6
2015	129	102	14	9	4
2014	130	101	17	6	6
2013	184	149	21	9	5
2012	230	174	26	18	12
2011	305	239	46	5	15
2010	351	276	52	11	12
2009	381	310	45	16	10
2008	215	162	20	24	9
2007	116	82	17	12	5
2006	56	28	12	5	11
2005	141	96	14	22	9
2004	160	109	24	26	1
2003	225	134	36	32	23
2002	260	152	44	50	14
2001	303	174	74	46	9
2000	269	144	37	64	24

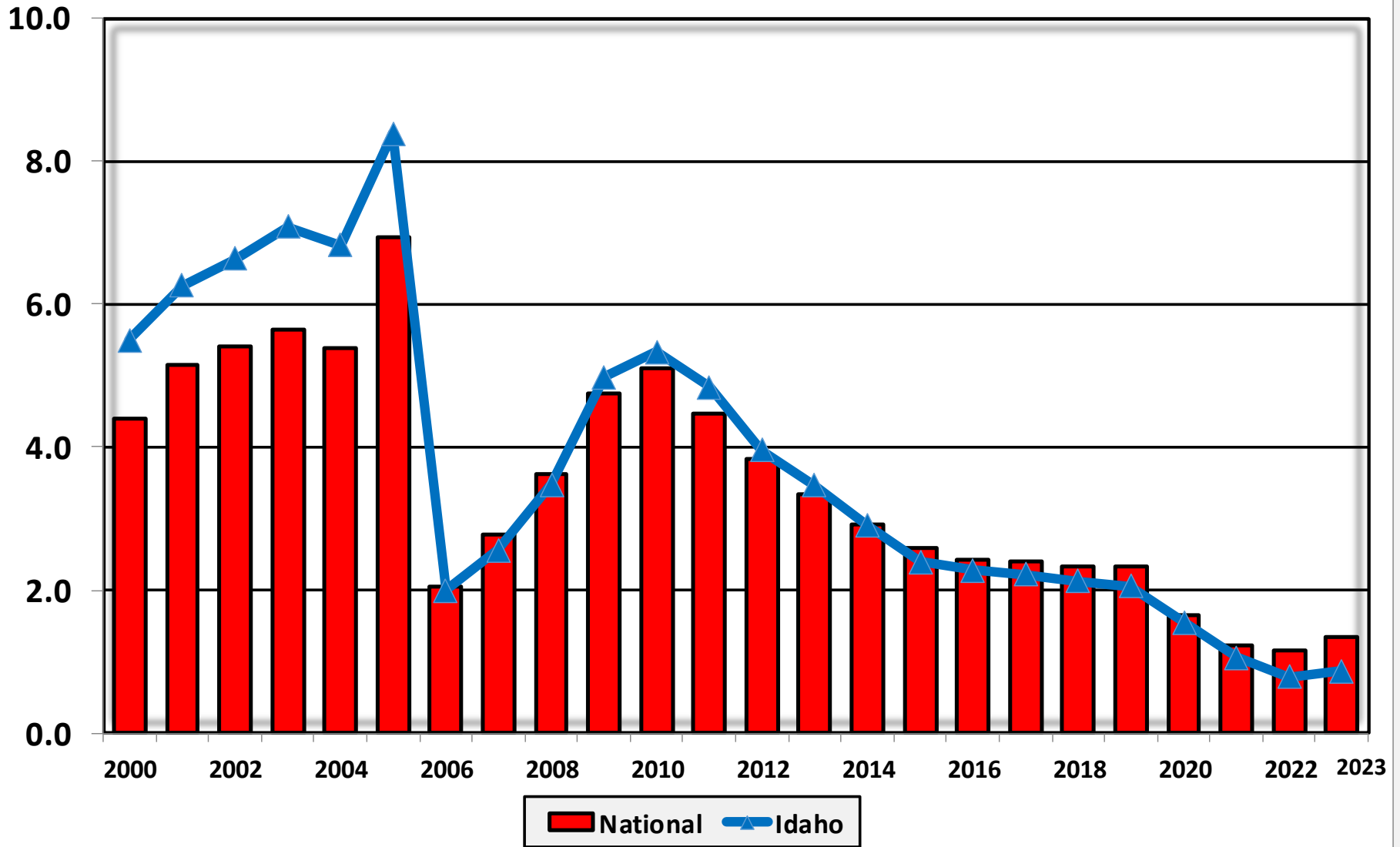
* Chapters 9, 12 and 15

District of Idaho

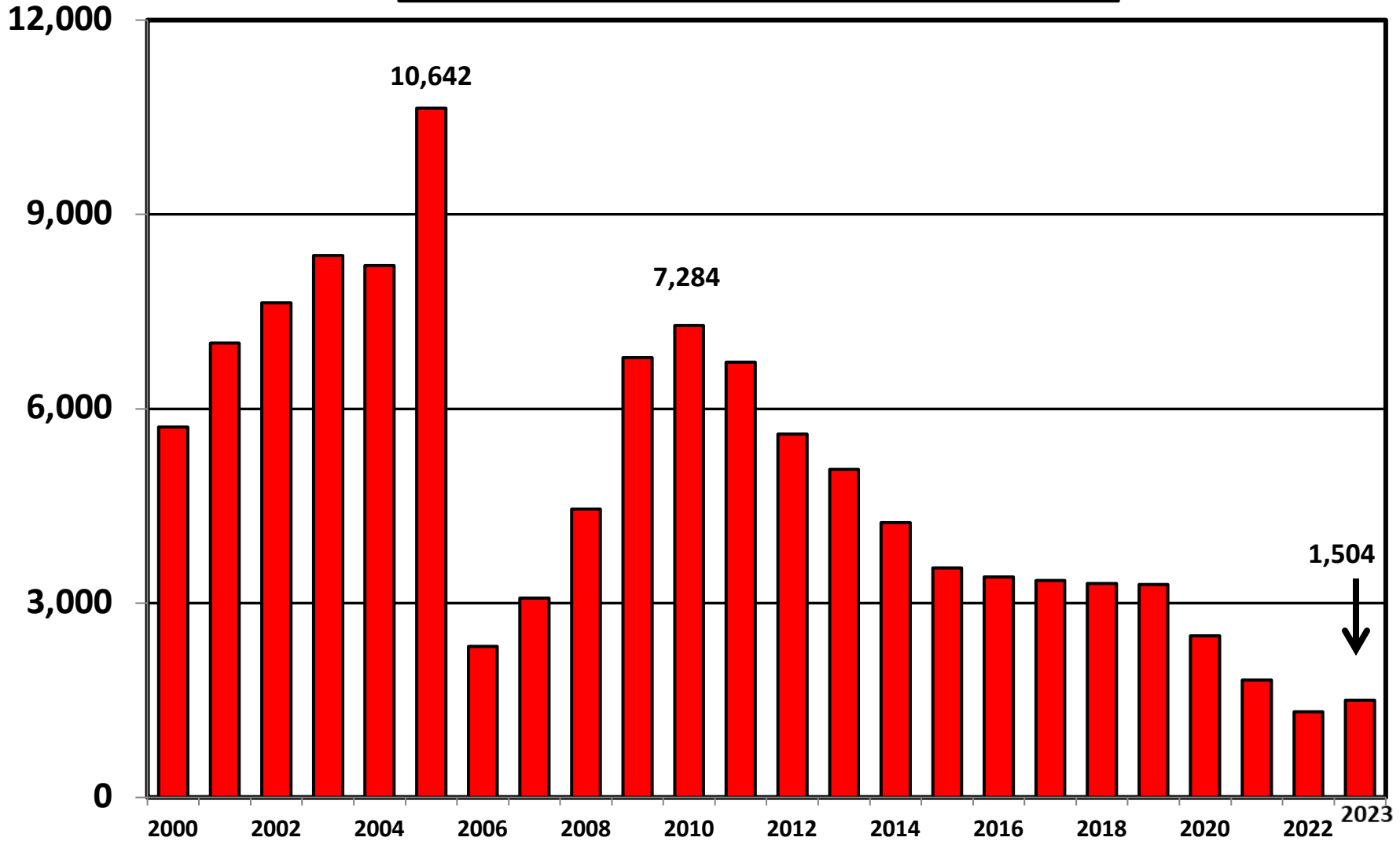
Total Bankruptcy Cases Filed 2000 - 2023



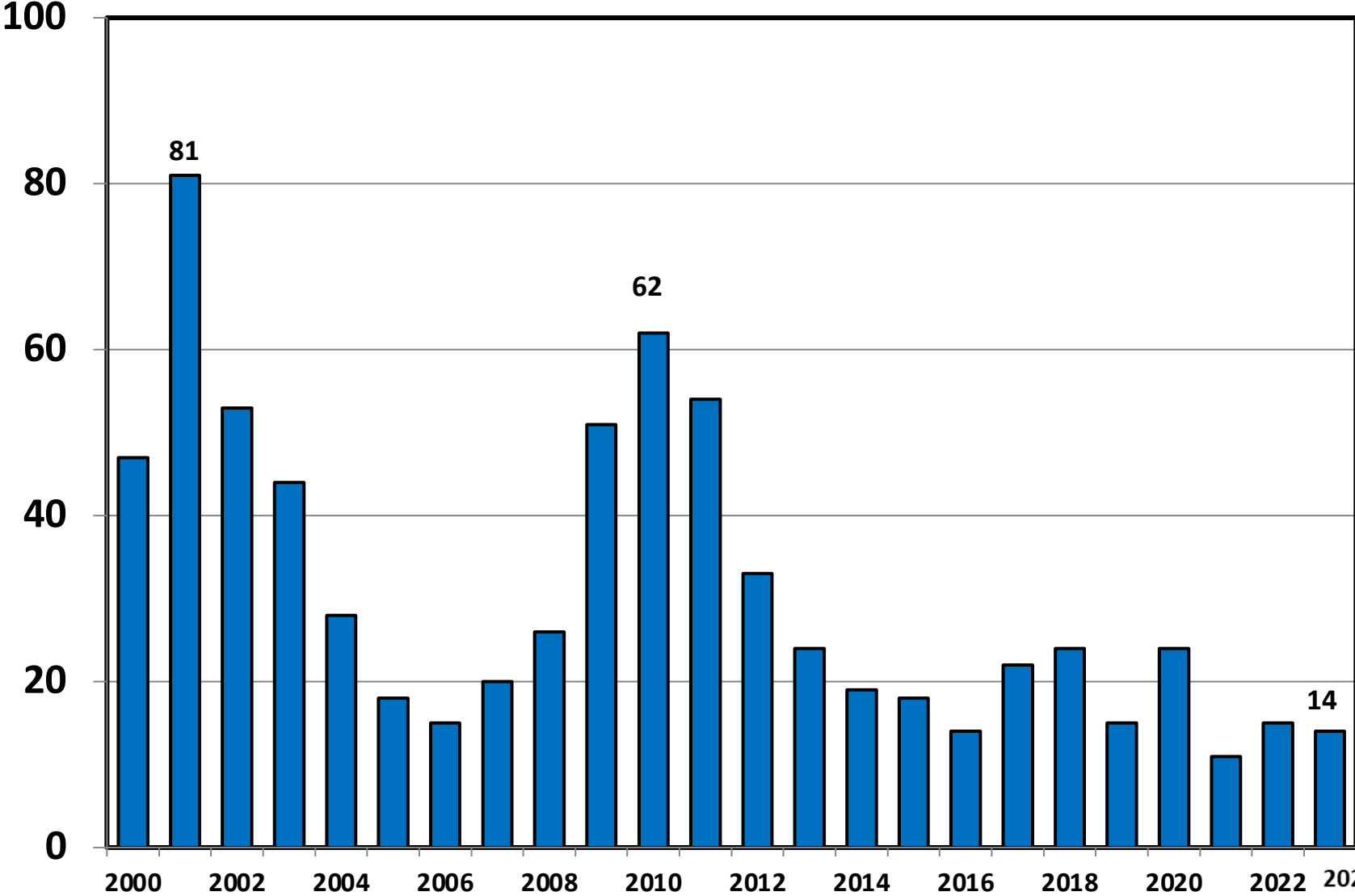
Bankruptcy Filings per 1,000 Population Idaho vs. National Average 2000 - 2023



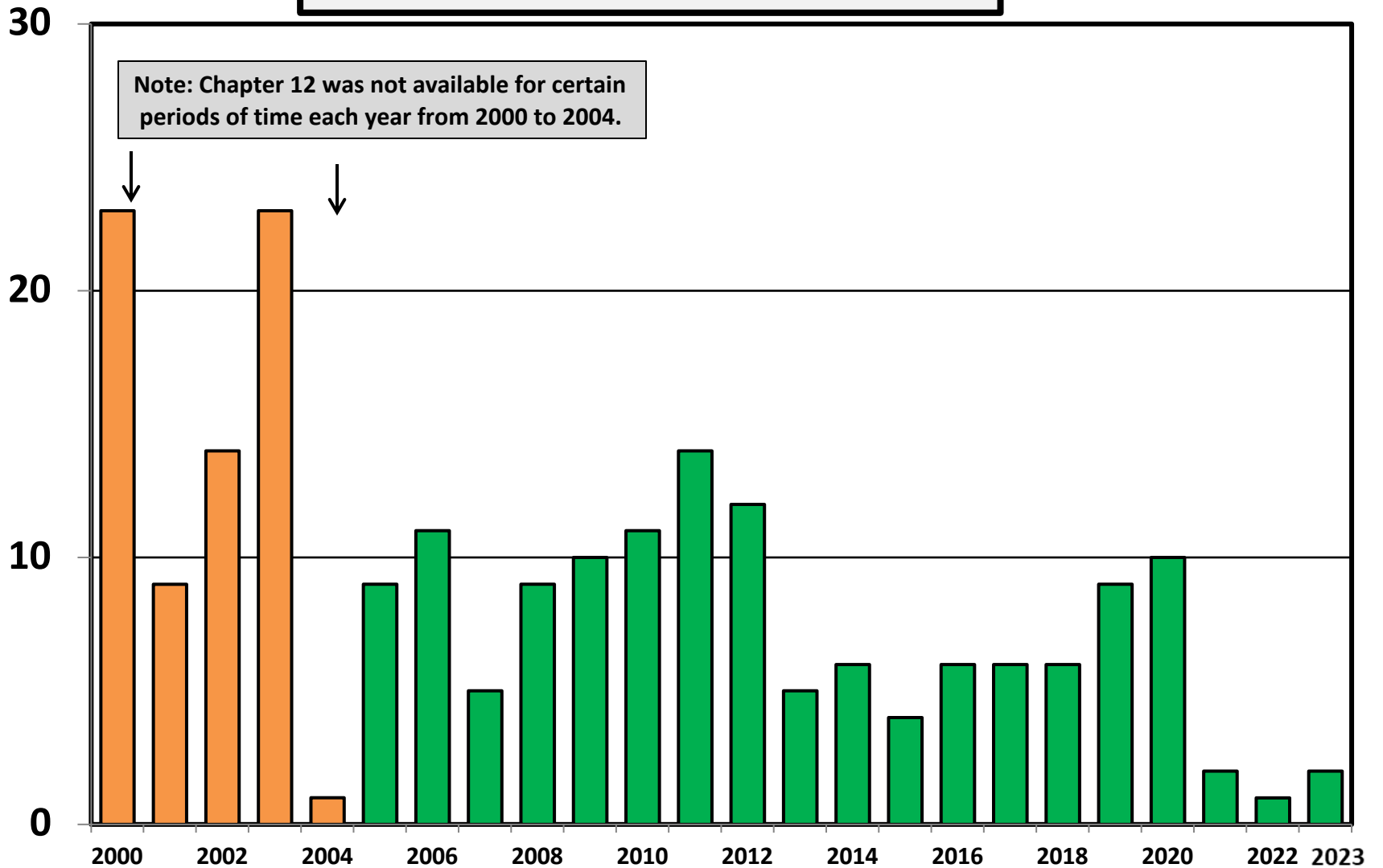
District of Idaho Chapter 7 Cases Filed 2000 - 2023



Chapter 11 Cases Filed in Idaho 2000 - 2023

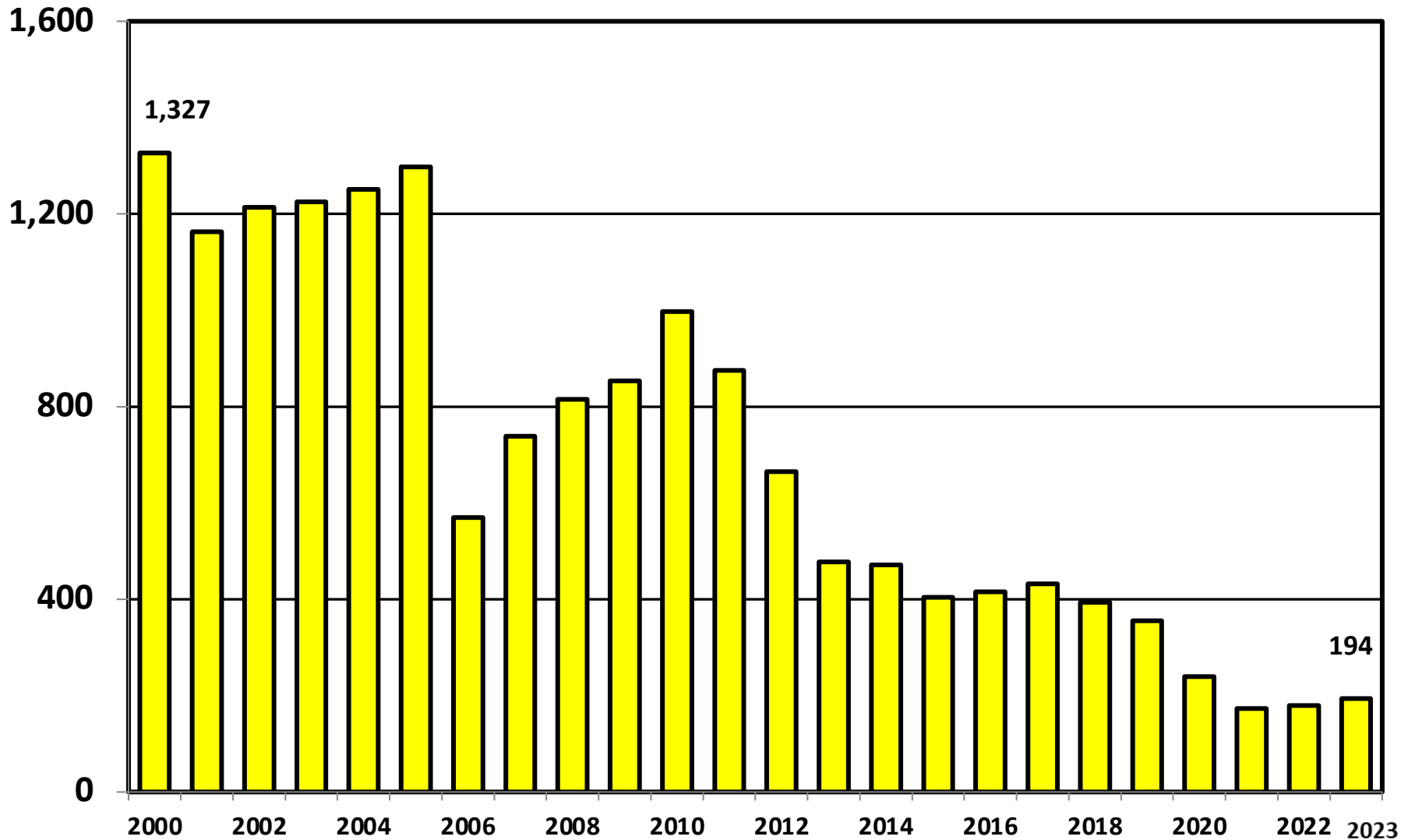


Chapter 12 Cases Filed in Idaho 2000 -2023

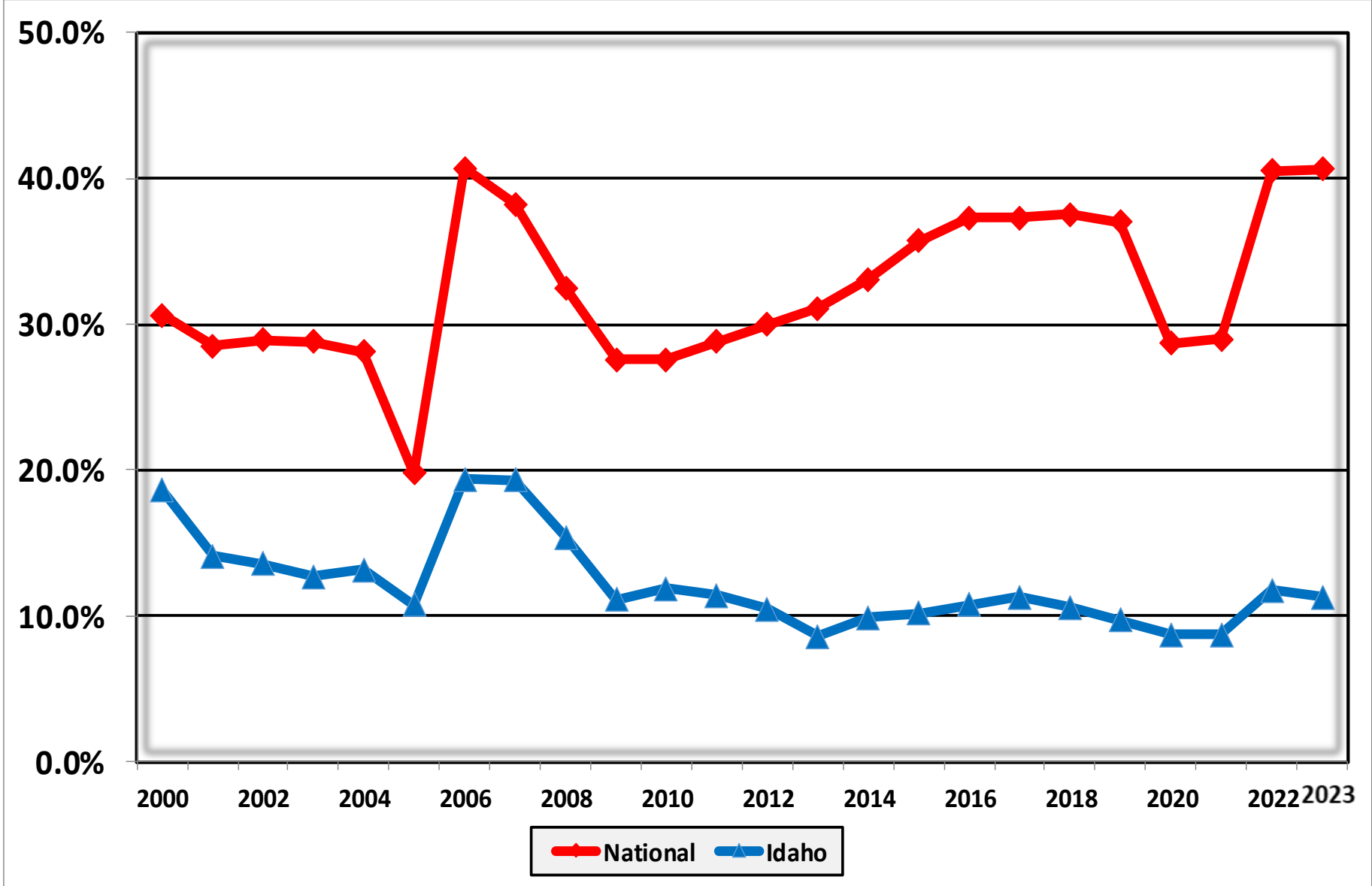


District of Idaho

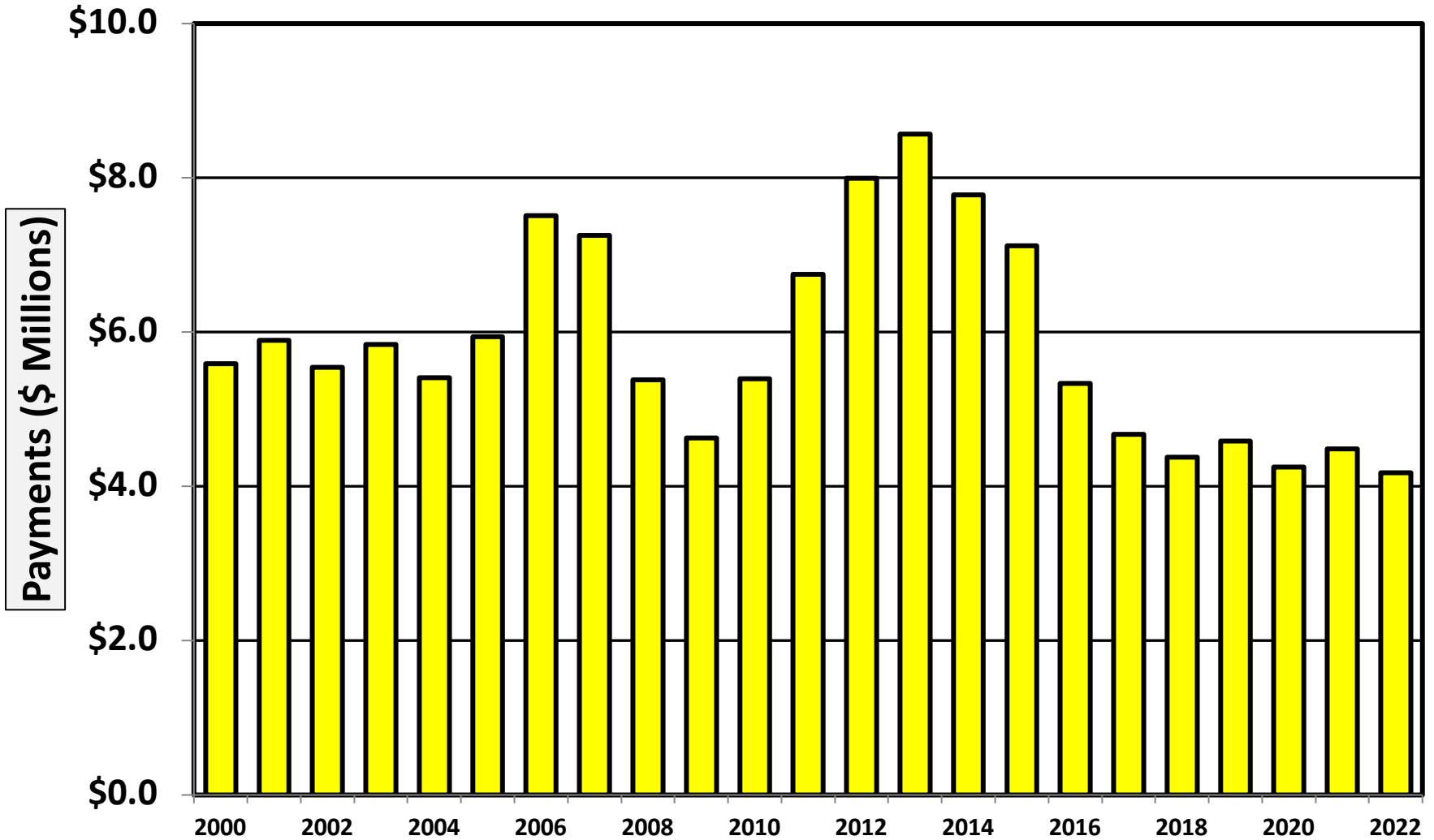
Chapter 13 Cases Filed 2000 - 2023



**Percent of Cases Filed as Chapter 13
Calendar Years 2000 - 2023**

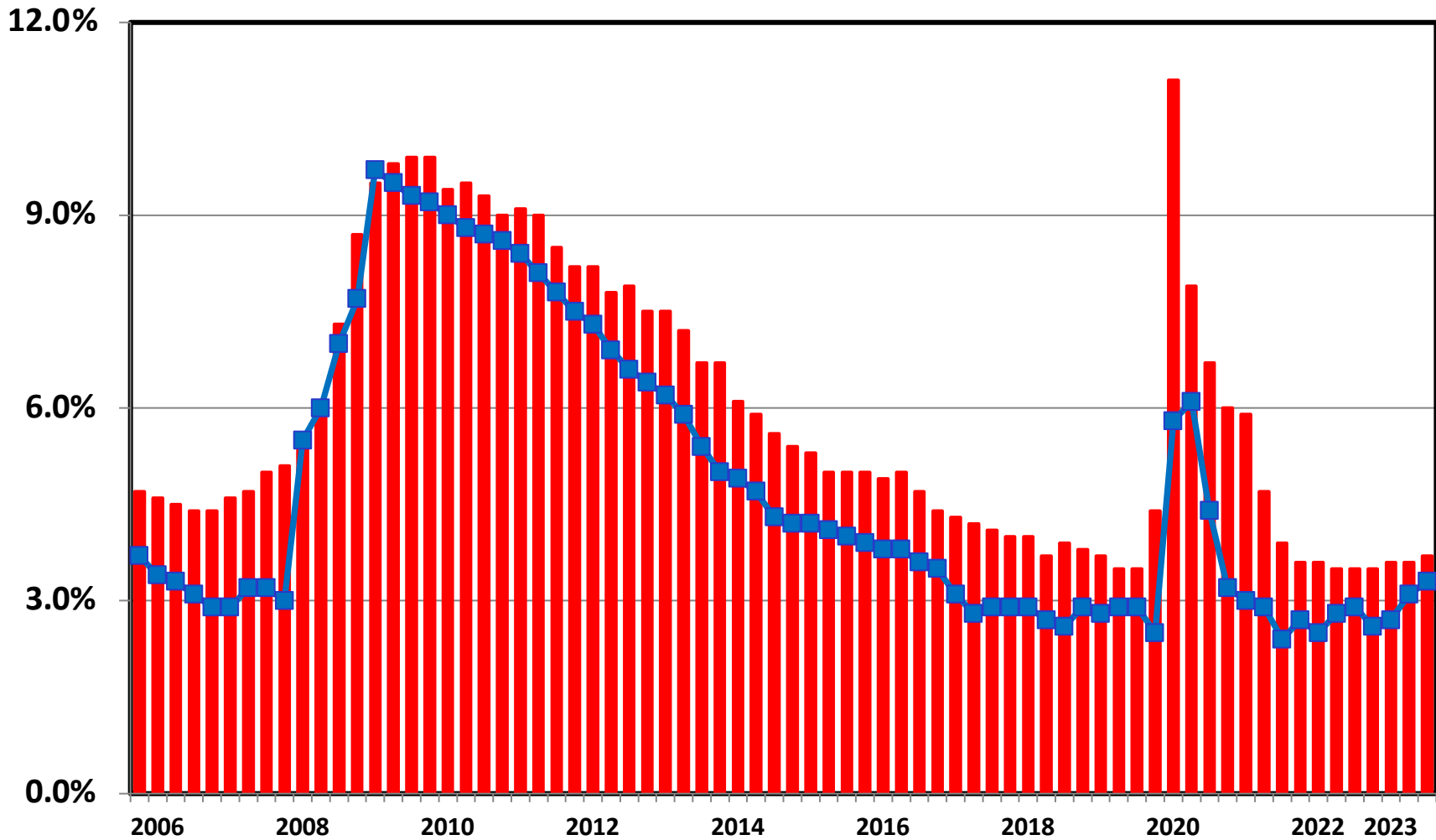


Chapter 13 Cases in Idaho
Amount (in Millions) Paid to Unsecured Creditors
Fiscal Years 2000 - 2022



Source: Executive Office for United States Trustees

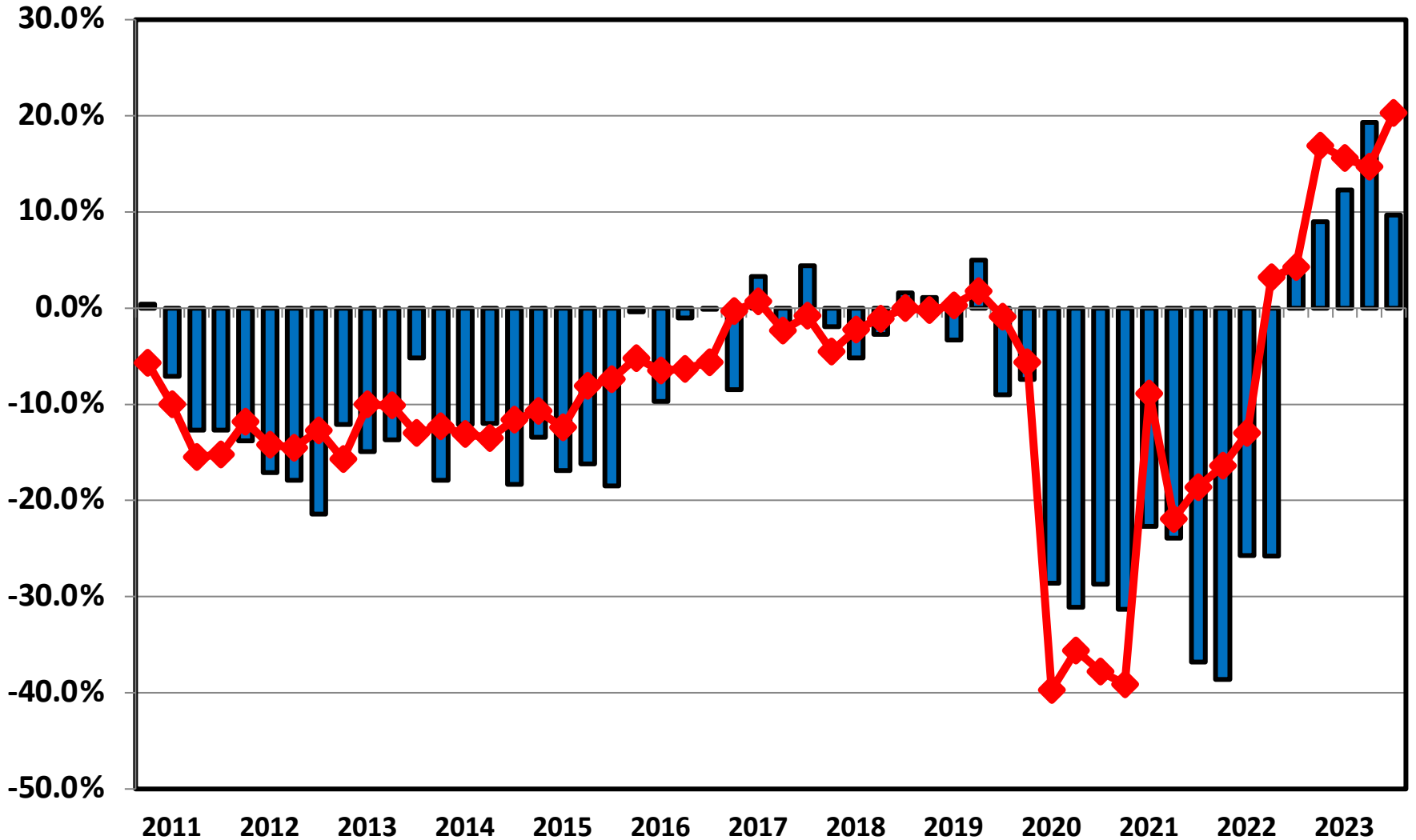
Unemployment Rate By Quarter 2006 - 2023



■ National ■ Idaho

Source: Bureau of Labor Statistics

Filing Trends By Quarter Idaho vs. National Average (Percent Change From Same Quarter One Year Prior)

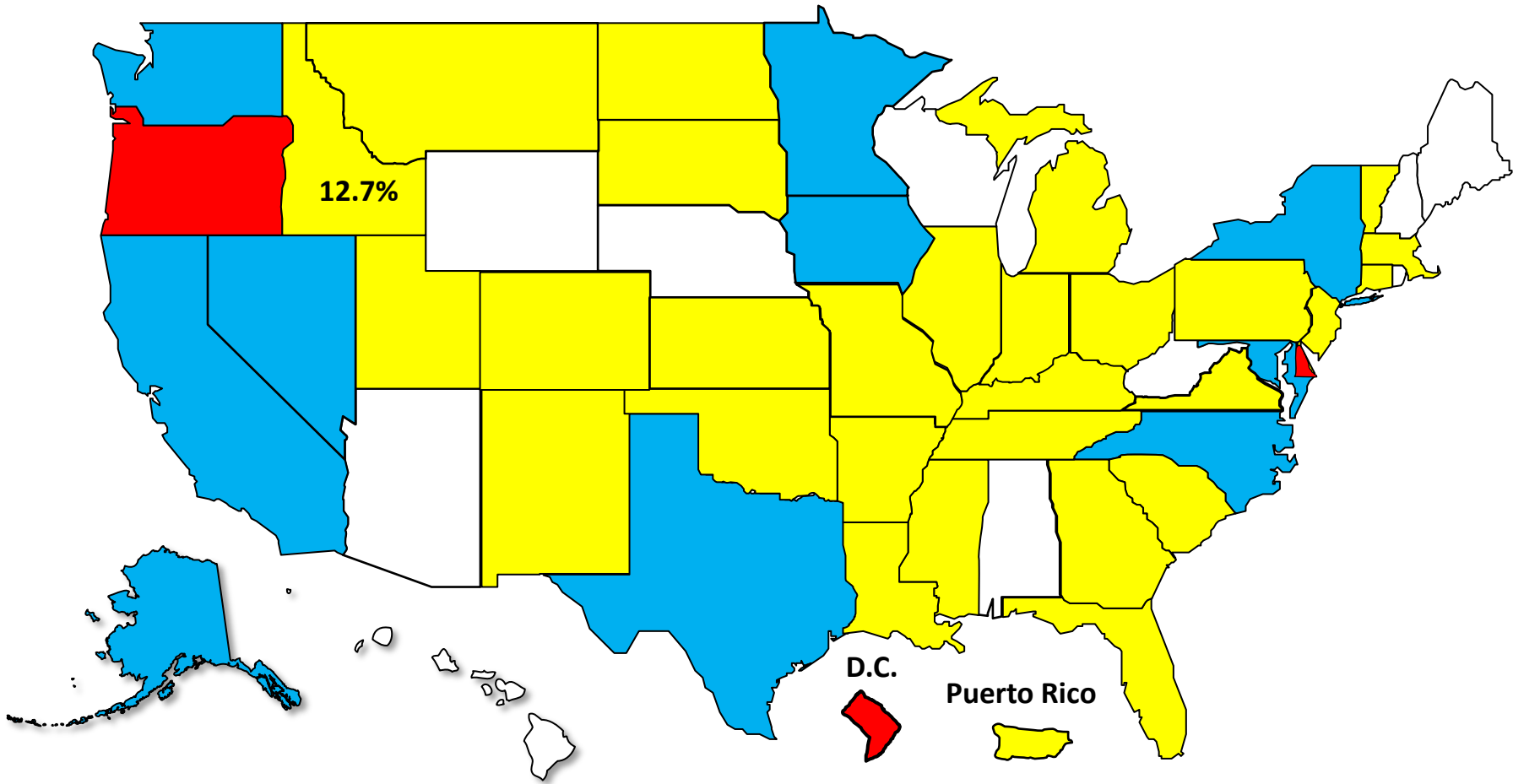


■ Idaho ◆ National

Bankruptcy Filing Trends

Calendar Year 2023 vs. 2022

National Average = 16.8% Increase

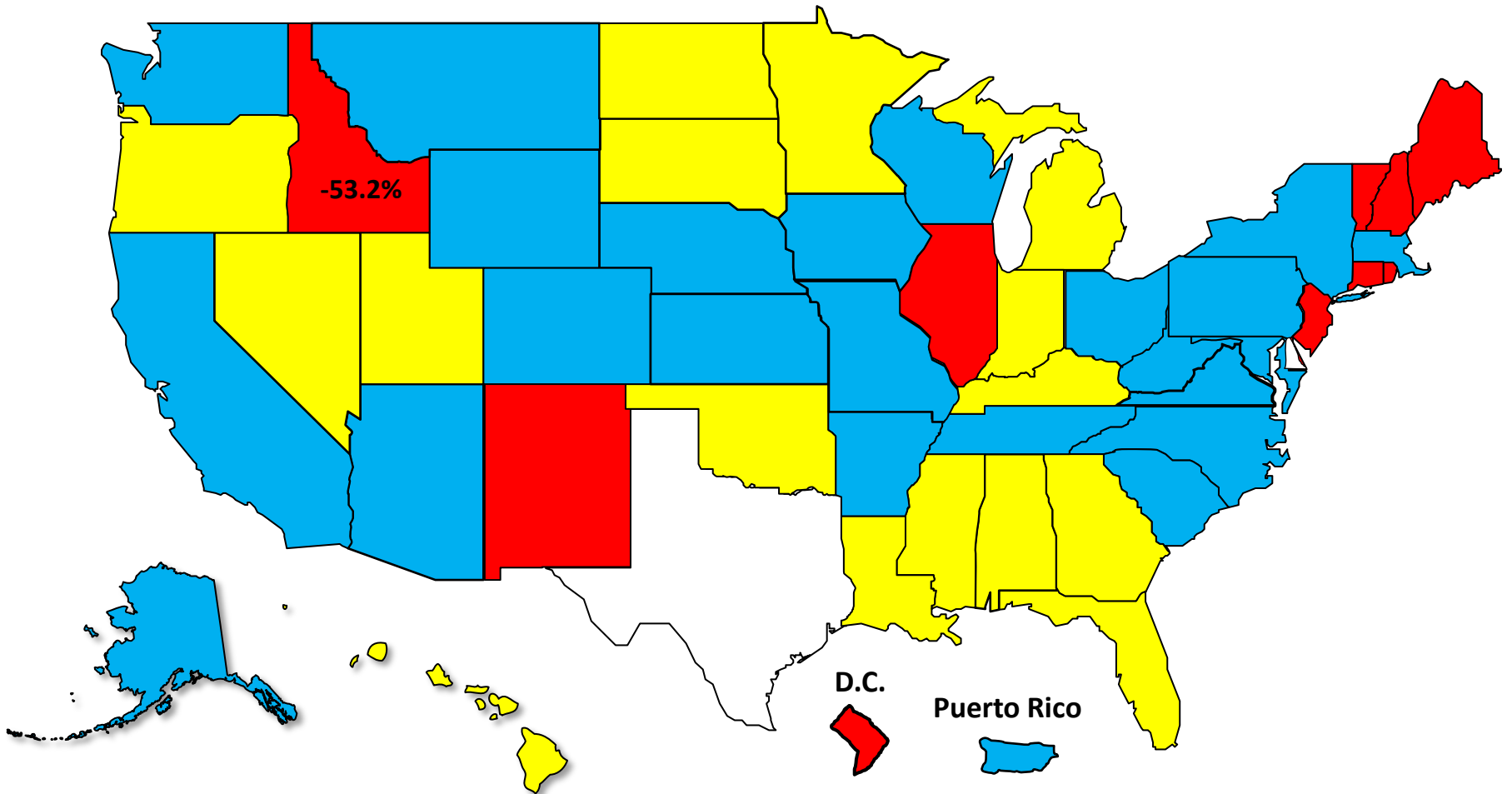


Bankruptcy Filing Trends During the Pandemic

Calendar Year 2023 vs. 2019

National Average = 41.5% Decrease

 Decline Under 30.0%  Decline 30.0% – 39.9%  Decline 40.0% – 49.9%  Decline 50.0% or More

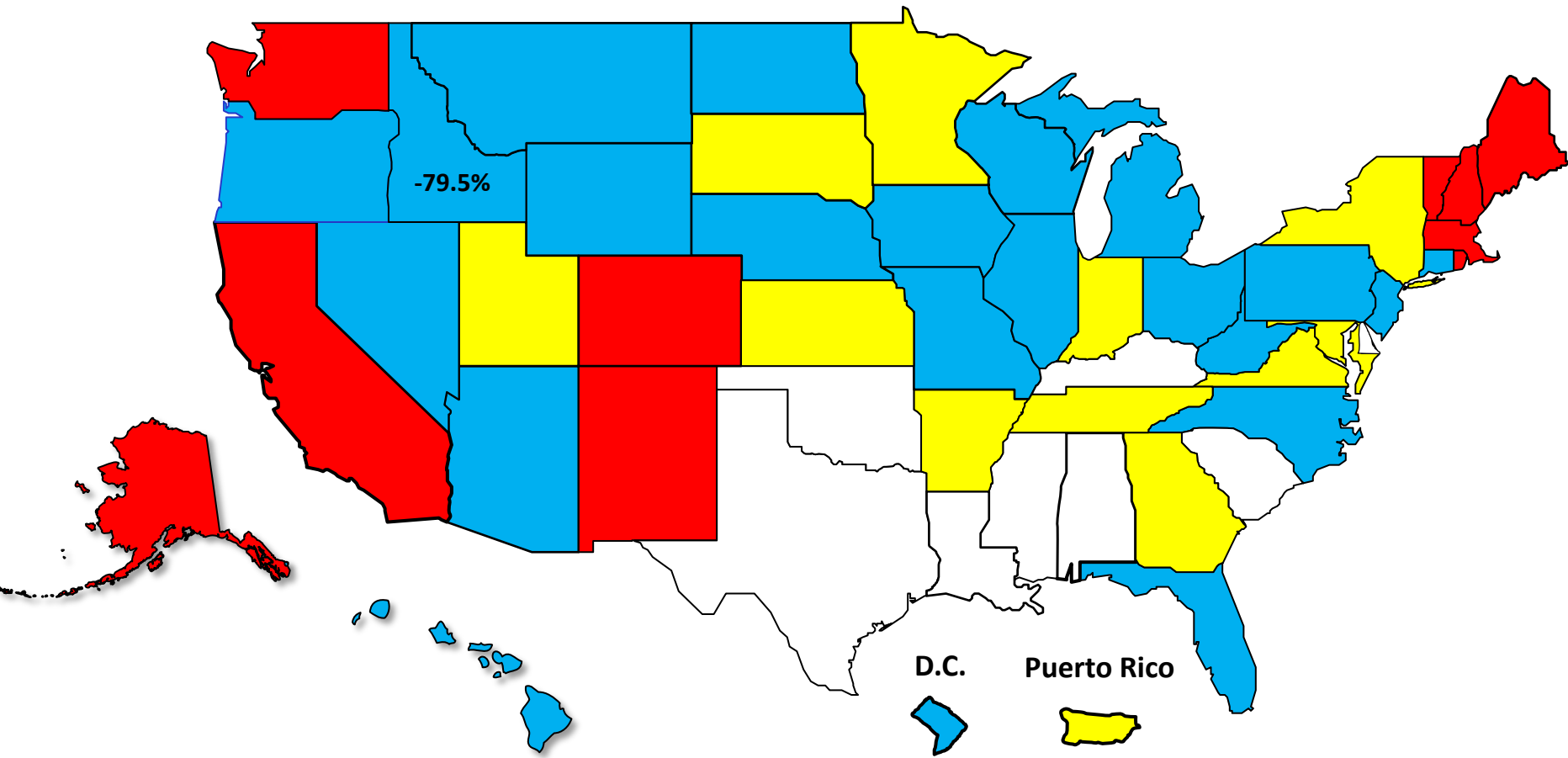


Percent Change in Total Filings

Calendar Year 2023 Compared to 2010 (Great Recession)

(National Average = 71.6% Decrease)

Amount of Decrease





AMERICAN
BANKRUPTCY
INSTITUTE

www.abi.org