

# Bankruptcy Filing Trends in Kansas



Prepared by: **The American Bankruptcy Institute**

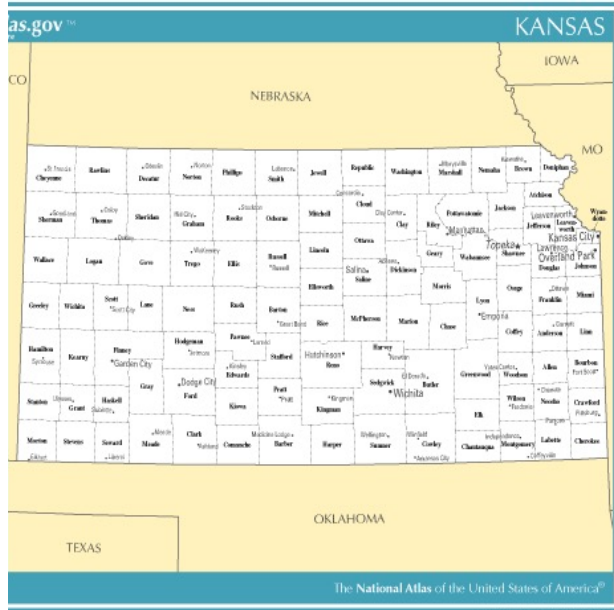
<http://www.abi.org/>



AMERICAN  
BANKRUPTCY  
INSTITUTE

Updated  
February 2024

# Kansas



AMERICAN  
BANKRUPTCY  
INSTITUTE

## State at a Glance

	Kansas	National
<b>Population (7/1/2023)</b>	<b>2,940,546</b>	<b>334,914,895</b>
- Change since April 2020	.1%	1.0%
- Foreign Born	7.1%	13.7%
<b>Size (Square Miles)</b>	<b>81,759</b>	<b>3,533,038</b>
<b>Median Household Income</b>	<b>\$69,747</b>	<b>\$75,021</b>
<b>Persons per Household</b>	<b>2.48</b>	<b>2.57</b>
<b>Per Capita Income</b>	<b>\$38,108</b>	<b>\$41,261</b>
<b>Median Home Value</b>	<b>\$189,300</b>	<b>\$281,900</b>
<b>Homeownership Rate</b>	<b>66.9%</b>	<b>64.8%</b>
<b>High School Graduate (or Higher)</b>	<b>91.8%</b>	<b>89.1%</b>
<b>College Graduate (or Higher)</b>	<b>34.7%</b>	<b>34.3%</b>
<b>Disabled</b>	<b>9.6</b>	<b>8.9%</b>
<b>No Health Insurance</b>	<b>10.3%</b>	<b>9.3%</b>
<b>In Poverty</b>	<b>12.0%</b>	<b>11.5%</b>
<b>Source: U.S. Census Bureau January 2024</b>		

Prepared by: The American Bankruptcy Institute

<http://www.abi.org>

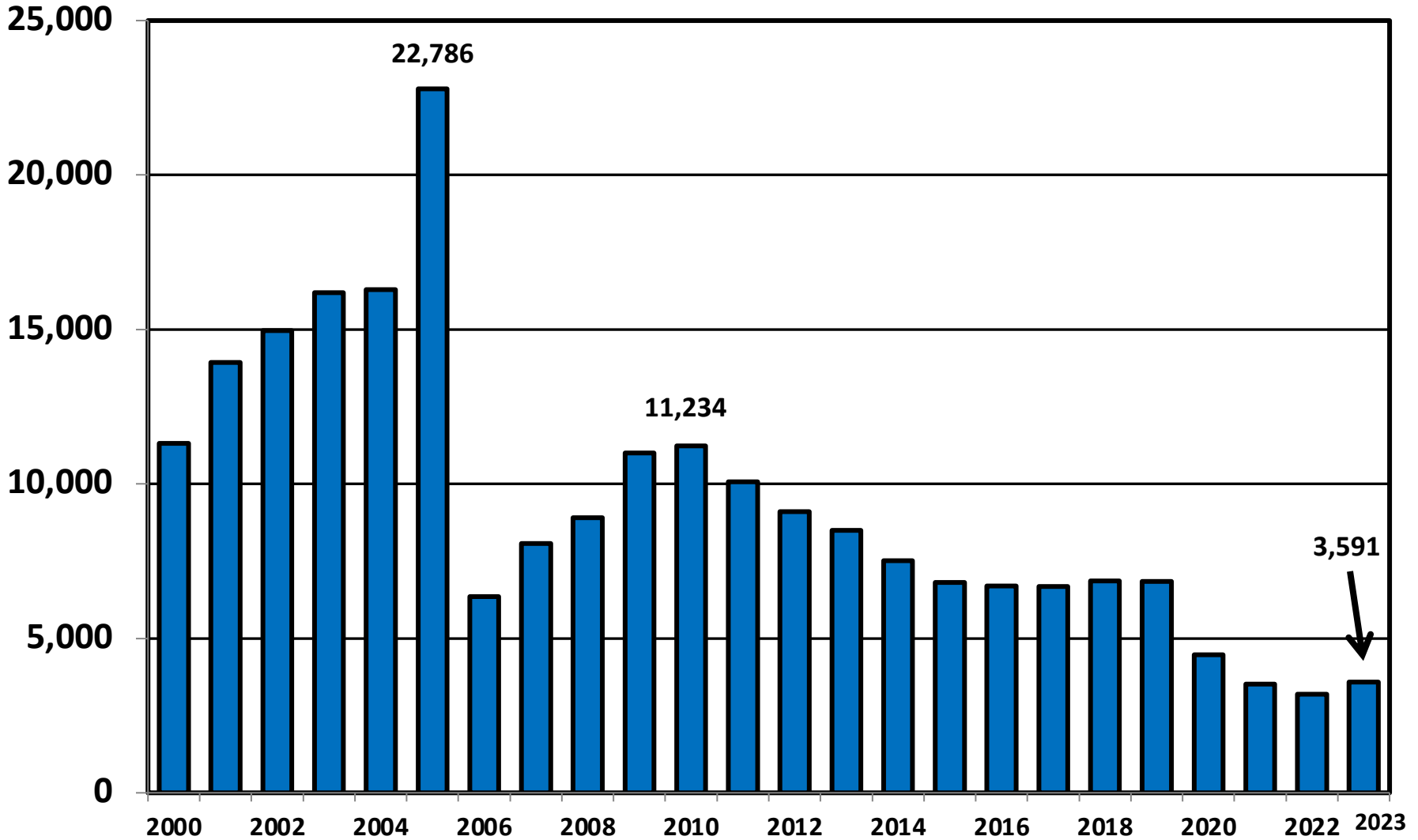
**Bankruptcy Filings in Kansas  
Calendar Years 2000 - 2023**

<b>Year</b>	<b>Total</b>	<b>Chapter 7</b>	<b>Chapter 11</b>	<b>Chapter 13</b>	<b>Other Cases*</b>
<b>2023</b>	<b>3,591</b>	<b>1,746</b>	<b>22</b>	<b>1,813</b>	<b>10</b>
<b>2022</b>	<b>3,189</b>	<b>1,542</b>	<b>27</b>	<b>1,614</b>	<b>6</b>
<b>2021</b>	<b>3,521</b>	<b>2,012</b>	<b>13</b>	<b>1,477</b>	<b>19</b>
<b>2020</b>	<b>4,470</b>	<b>2,665</b>	<b>28</b>	<b>1,742</b>	<b>35</b>
<b>2019</b>	<b>6,839</b>	<b>3,716</b>	<b>55</b>	<b>3,032</b>	<b>36</b>
<b>2018</b>	<b>6,856</b>	<b>3,724</b>	<b>28</b>	<b>3,069</b>	<b>35</b>
<b>2017</b>	<b>6,679</b>	<b>3,731</b>	<b>41</b>	<b>2,882</b>	<b>25</b>
<b>2016</b>	<b>6,696</b>	<b>3,802</b>	<b>105</b>	<b>2,768</b>	<b>21</b>
<b>2015</b>	<b>6,816</b>	<b>3,905</b>	<b>30</b>	<b>2,877</b>	<b>4</b>
<b>2014</b>	<b>7,511</b>	<b>4,429</b>	<b>34</b>	<b>3,041</b>	<b>7</b>
<b>2013</b>	<b>8,493</b>	<b>5,252</b>	<b>41</b>	<b>3,185</b>	<b>15</b>
<b>2012</b>	<b>9,097</b>	<b>5,848</b>	<b>59</b>	<b>3,184</b>	<b>6</b>
<b>2011</b>	<b>10,073</b>	<b>6,882</b>	<b>63</b>	<b>3,103</b>	<b>25</b>
<b>2010</b>	<b>11,234</b>	<b>7,858</b>	<b>54</b>	<b>3,298</b>	<b>24</b>
<b>2009</b>	<b>10,996</b>	<b>7,668</b>	<b>87</b>	<b>3,226</b>	<b>15</b>
<b>2008</b>	<b>8,900</b>	<b>6,116</b>	<b>32</b>	<b>2,736</b>	<b>16</b>
<b>2007</b>	<b>8,072</b>	<b>5,380</b>	<b>29</b>	<b>2,647</b>	<b>16</b>
<b>2006</b>	<b>6,347</b>	<b>4,228</b>	<b>17</b>	<b>2,086</b>	<b>16</b>
<b>2005</b>	<b>22,786</b>	<b>19,312</b>	<b>18</b>	<b>3,432</b>	<b>24</b>
<b>2004</b>	<b>16,289</b>	<b>13,158</b>	<b>44</b>	<b>3,085</b>	<b>2</b>
<b>2003</b>	<b>16,192</b>	<b>12,984</b>	<b>58</b>	<b>3,122</b>	<b>28</b>
<b>2002</b>	<b>14,969</b>	<b>12,093</b>	<b>43</b>	<b>2,814</b>	<b>19</b>
<b>2001</b>	<b>13,937</b>	<b>11,477</b>	<b>51</b>	<b>2,389</b>	<b>20</b>
<b>2000</b>	<b>11,315</b>	<b>9,208</b>	<b>34</b>	<b>2,067</b>	<b>6</b>
<b>*Chapters 9, 12 and 15</b>					

**Business Bankruptcy Cases Filed - Kansas  
Years Ended December 31, 2000 - 2023**

<b>CALENDAR YEAR</b>	<b>TOTAL FILINGS</b>	<b>CHAPTER 7</b>	<b>CHAPTER 11</b>	<b>CHAPTER 13</b>	<b>OTHER CASES*</b>
<b>2023</b>	<b>102</b>	<b>62</b>	<b>20</b>	<b>10</b>	<b>10</b>
<b>2022</b>	<b>94</b>	<b>52</b>	<b>25</b>	<b>11</b>	<b>6</b>
<b>2021</b>	<b>102</b>	<b>65</b>	<b>12</b>	<b>6</b>	<b>19</b>
<b>2020</b>	<b>177</b>	<b>95</b>	<b>24</b>	<b>23</b>	<b>35</b>
<b>2019</b>	<b>228</b>	<b>118</b>	<b>50</b>	<b>24</b>	<b>36</b>
<b>2018</b>	<b>212</b>	<b>128</b>	<b>26</b>	<b>23</b>	<b>35</b>
<b>2017</b>	<b>176</b>	<b>87</b>	<b>39</b>	<b>25</b>	<b>25</b>
<b>2016</b>	<b>256</b>	<b>109</b>	<b>100</b>	<b>26</b>	<b>21</b>
<b>2015</b>	<b>170</b>	<b>112</b>	<b>27</b>	<b>27</b>	<b>4</b>
<b>2014</b>	<b>201</b>	<b>131</b>	<b>30</b>	<b>33</b>	<b>7</b>
<b>2013</b>	<b>183</b>	<b>105</b>	<b>38</b>	<b>25</b>	<b>15</b>
<b>2012</b>	<b>249</b>	<b>156</b>	<b>54</b>	<b>33</b>	<b>6</b>
<b>2011</b>	<b>298</b>	<b>184</b>	<b>57</b>	<b>32</b>	<b>25</b>
<b>2010</b>	<b>329</b>	<b>211</b>	<b>51</b>	<b>43</b>	<b>24</b>
<b>2009</b>	<b>389</b>	<b>254</b>	<b>82</b>	<b>38</b>	<b>15</b>
<b>2008</b>	<b>252</b>	<b>171</b>	<b>31</b>	<b>34</b>	<b>16</b>
<b>2007</b>	<b>223</b>	<b>140</b>	<b>28</b>	<b>39</b>	<b>16</b>
<b>2006</b>	<b>158</b>	<b>104</b>	<b>17</b>	<b>21</b>	<b>16</b>
<b>2005</b>	<b>410</b>	<b>303</b>	<b>13</b>	<b>70</b>	<b>24</b>
<b>2004</b>	<b>268</b>	<b>190</b>	<b>41</b>	<b>35</b>	<b>2</b>
<b>2003</b>	<b>303</b>	<b>177</b>	<b>52</b>	<b>46</b>	<b>28</b>
<b>2002</b>	<b>238</b>	<b>148</b>	<b>41</b>	<b>30</b>	<b>19</b>
<b>2001</b>	<b>220</b>	<b>126</b>	<b>46</b>	<b>28</b>	<b>20</b>
<b>2000</b>	<b>169</b>	<b>107</b>	<b>33</b>	<b>23</b>	<b>6</b>
<b>* Chapters 9, 12 and 15</b>					

# Total Bankruptcy Cases Filed In Kansas Calendar Years 2000 - 2023



# Total Filings Relative to Population 2000 - 2023



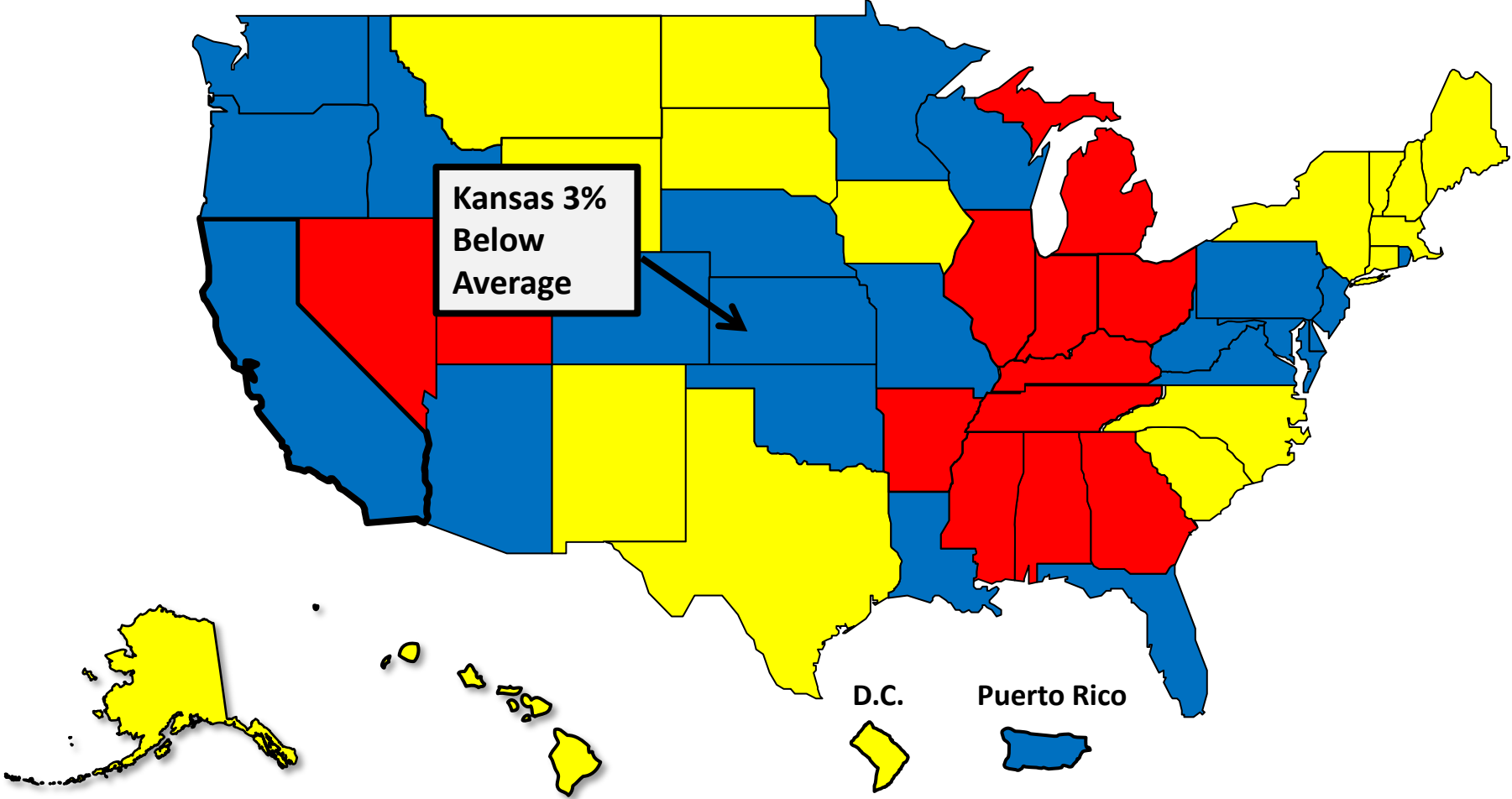
More than 25%  
Above Average



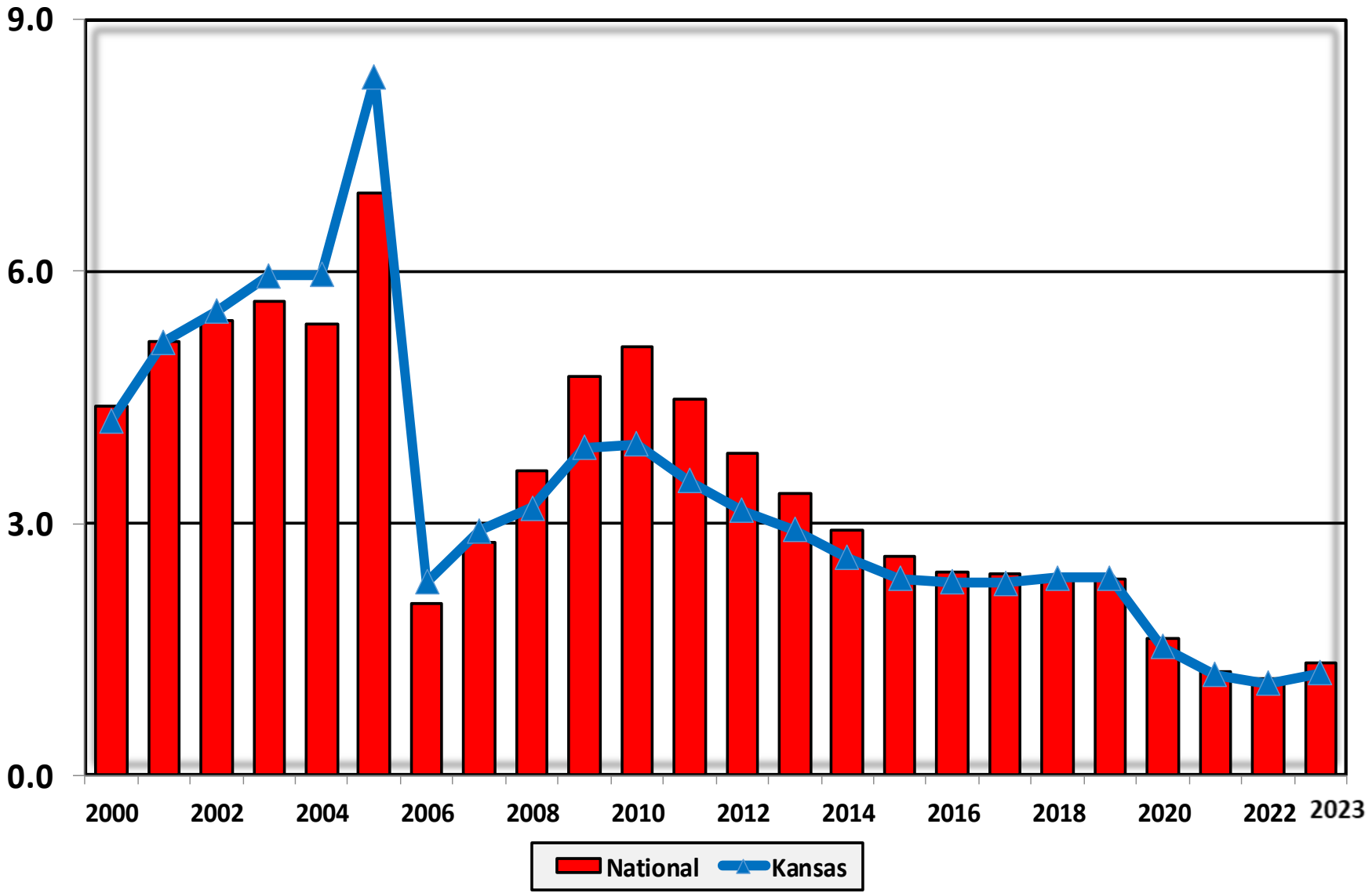
Within 25%  
of Average



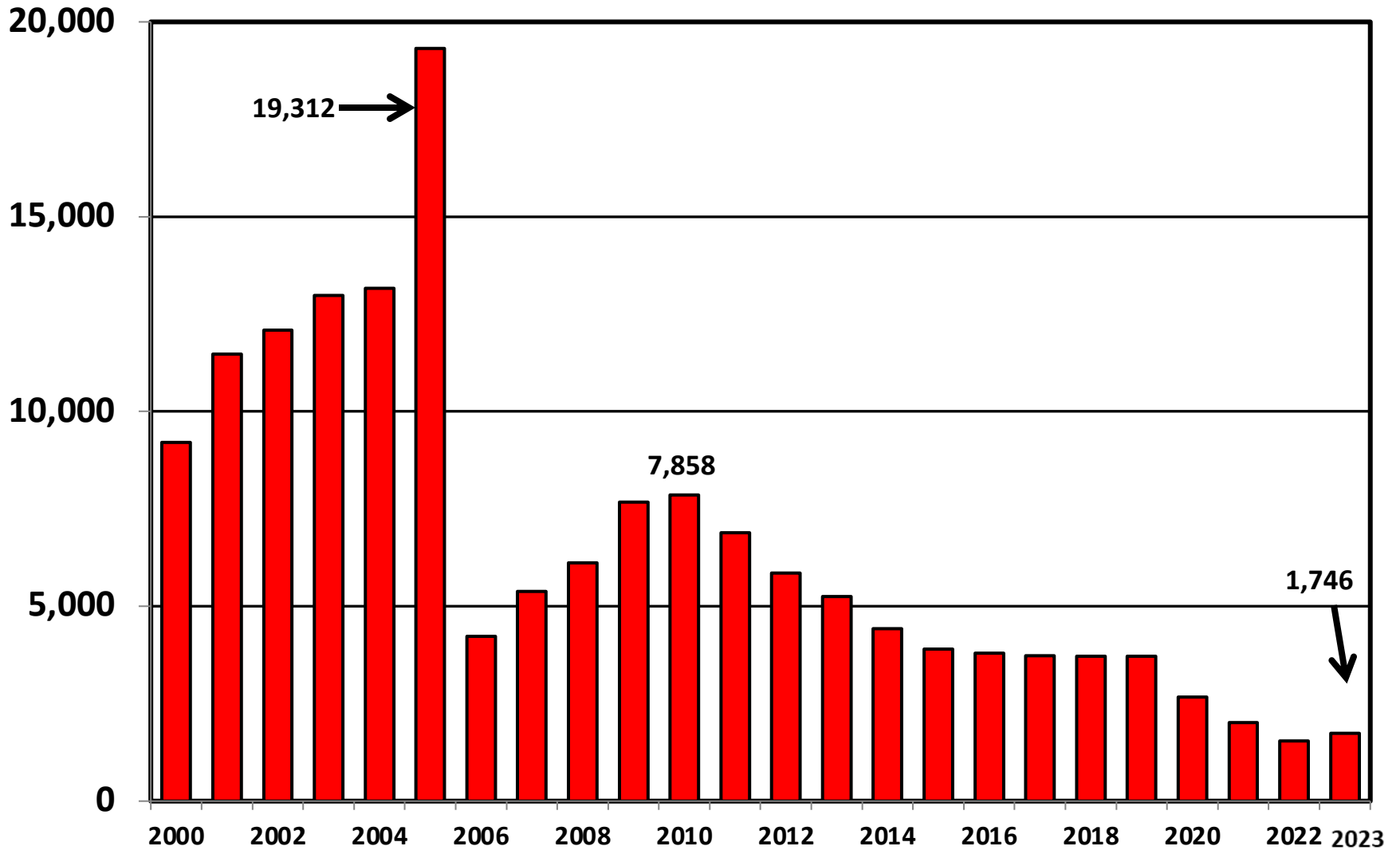
More than 25%  
Below Average



**Bankruptcy Filings per 1,000 Population  
Kansas vs. National Average 2000 - 2023**

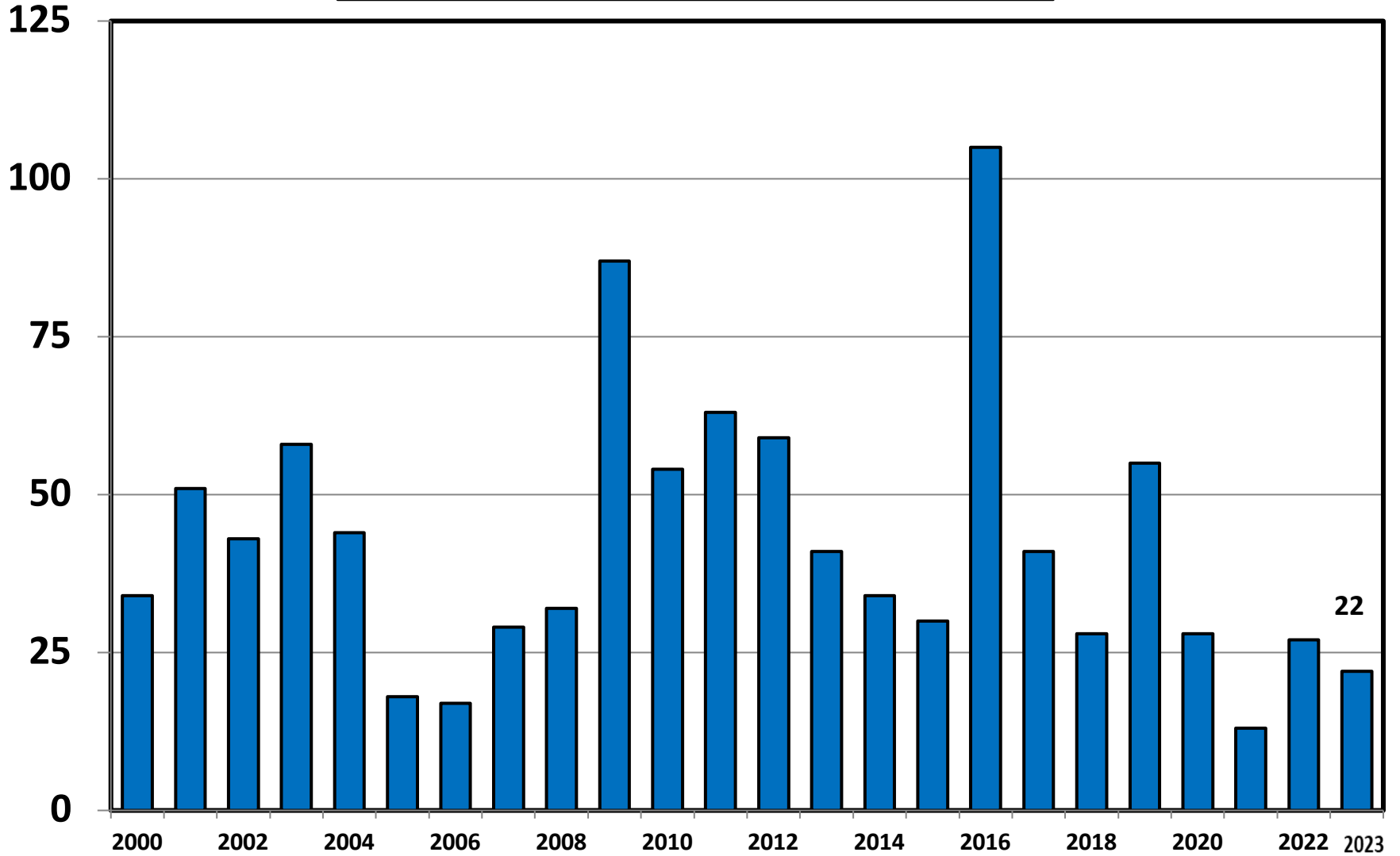


# Chapter 7 Cases Filed In Kansas Calendar Years 2000 - 2023

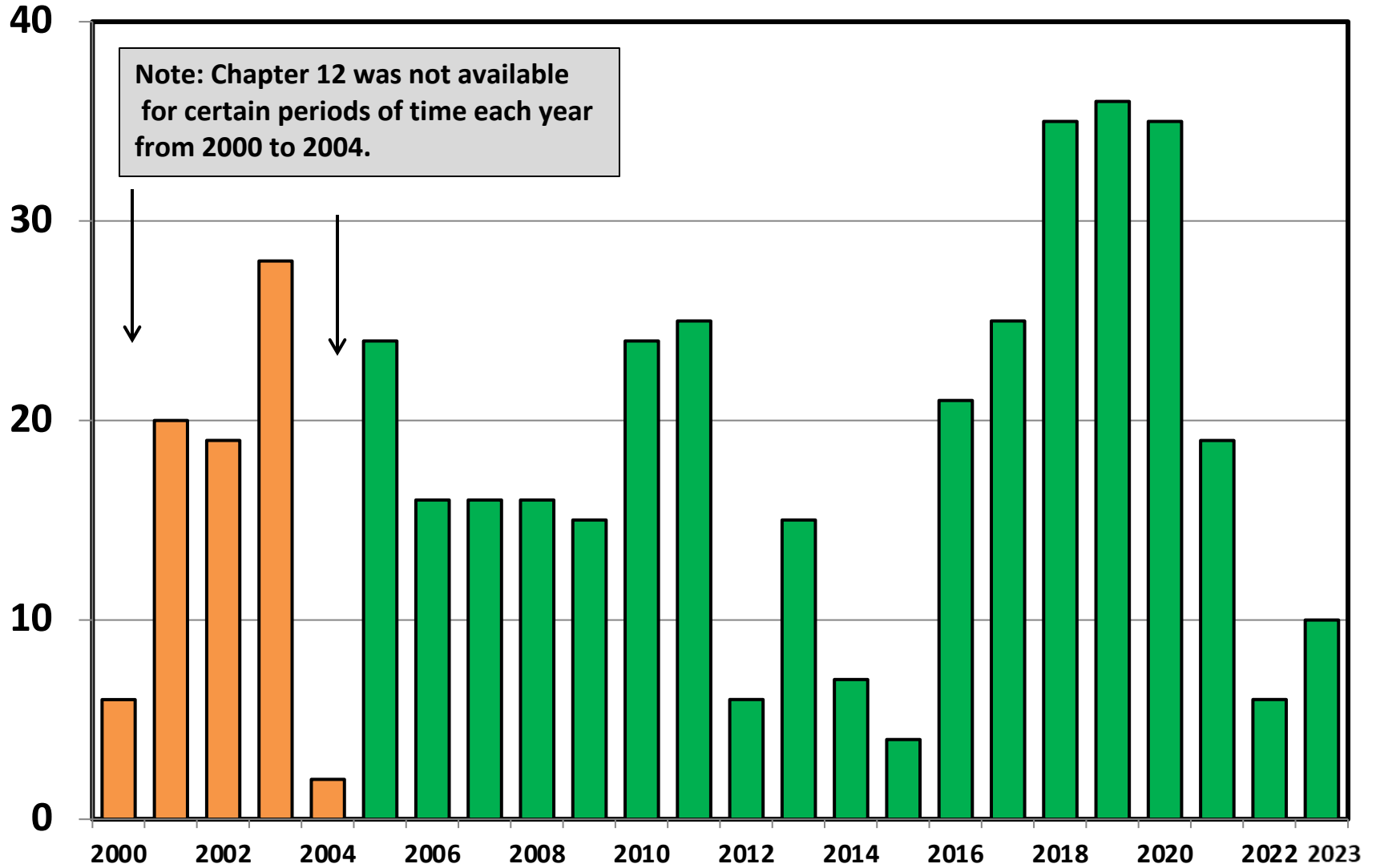




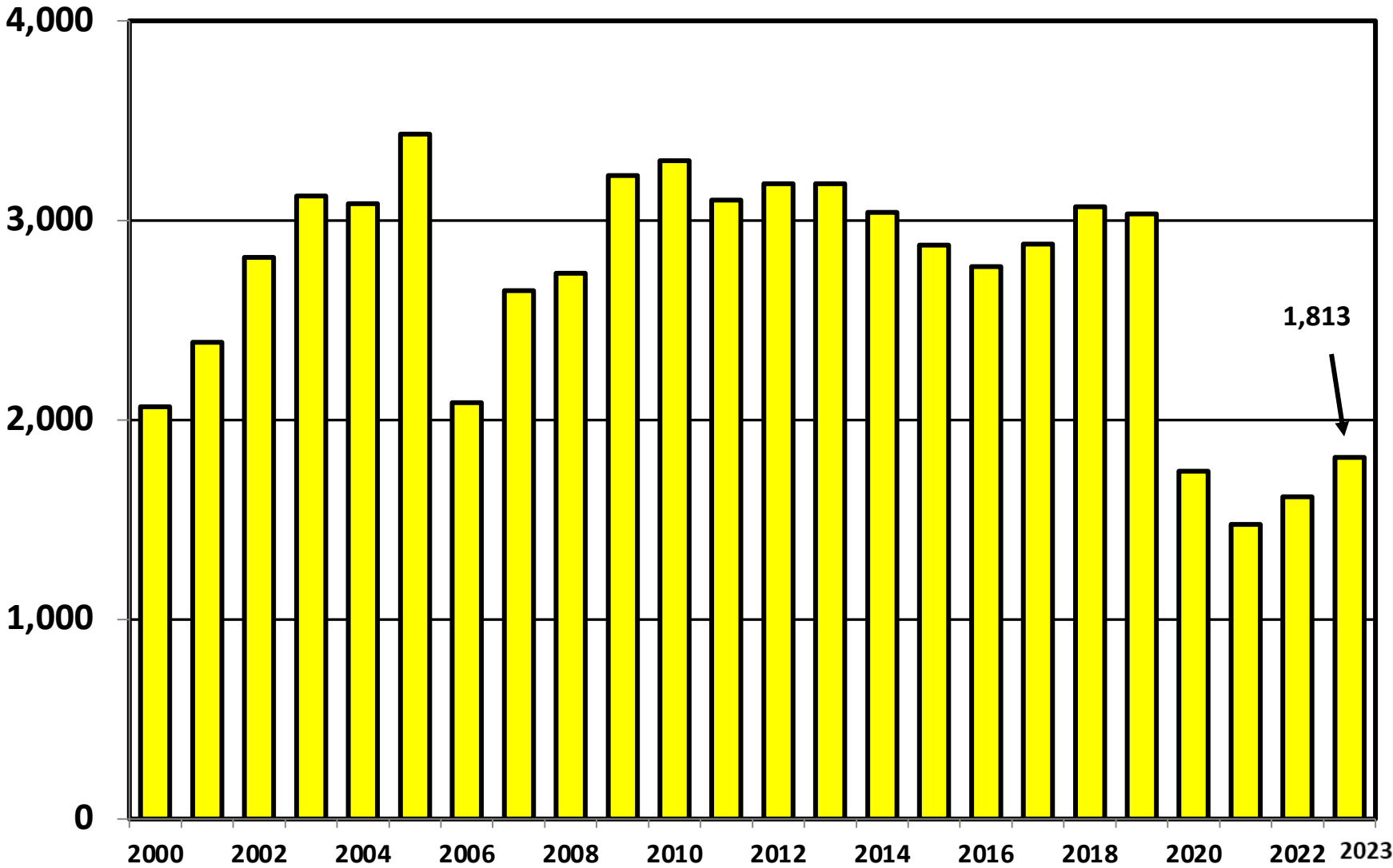
# Chapter 11 Cases Filed in Kansas 2000 - 2023



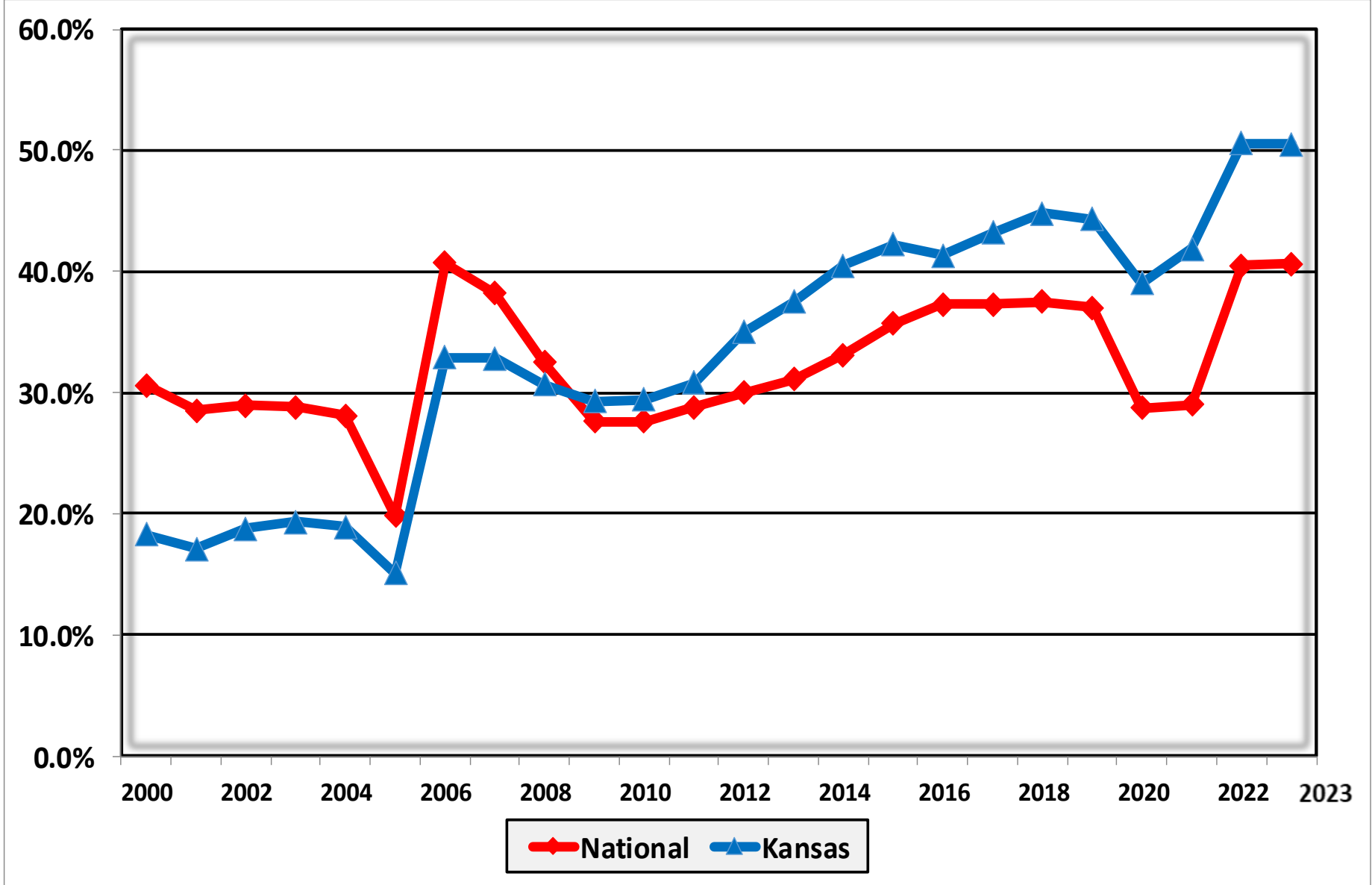
# Chapter 12 Cases Filed in Kansas 2000 - 2023



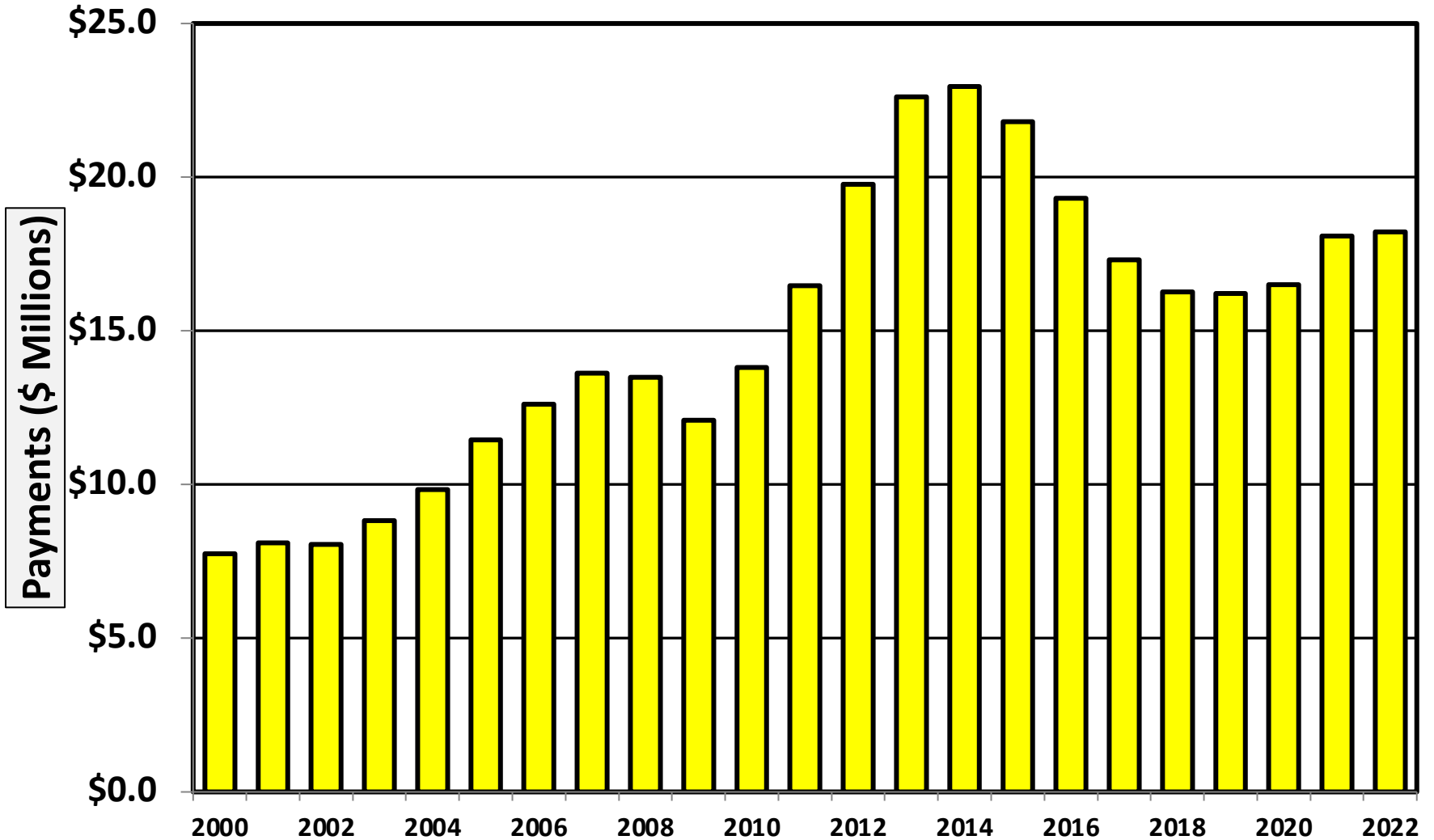
# Chapter 13 Cases Filed in Kansas 2000 - 2023



**Percent of Cases Filed as Chapter 13  
Calendar Years 2000 - 2023**

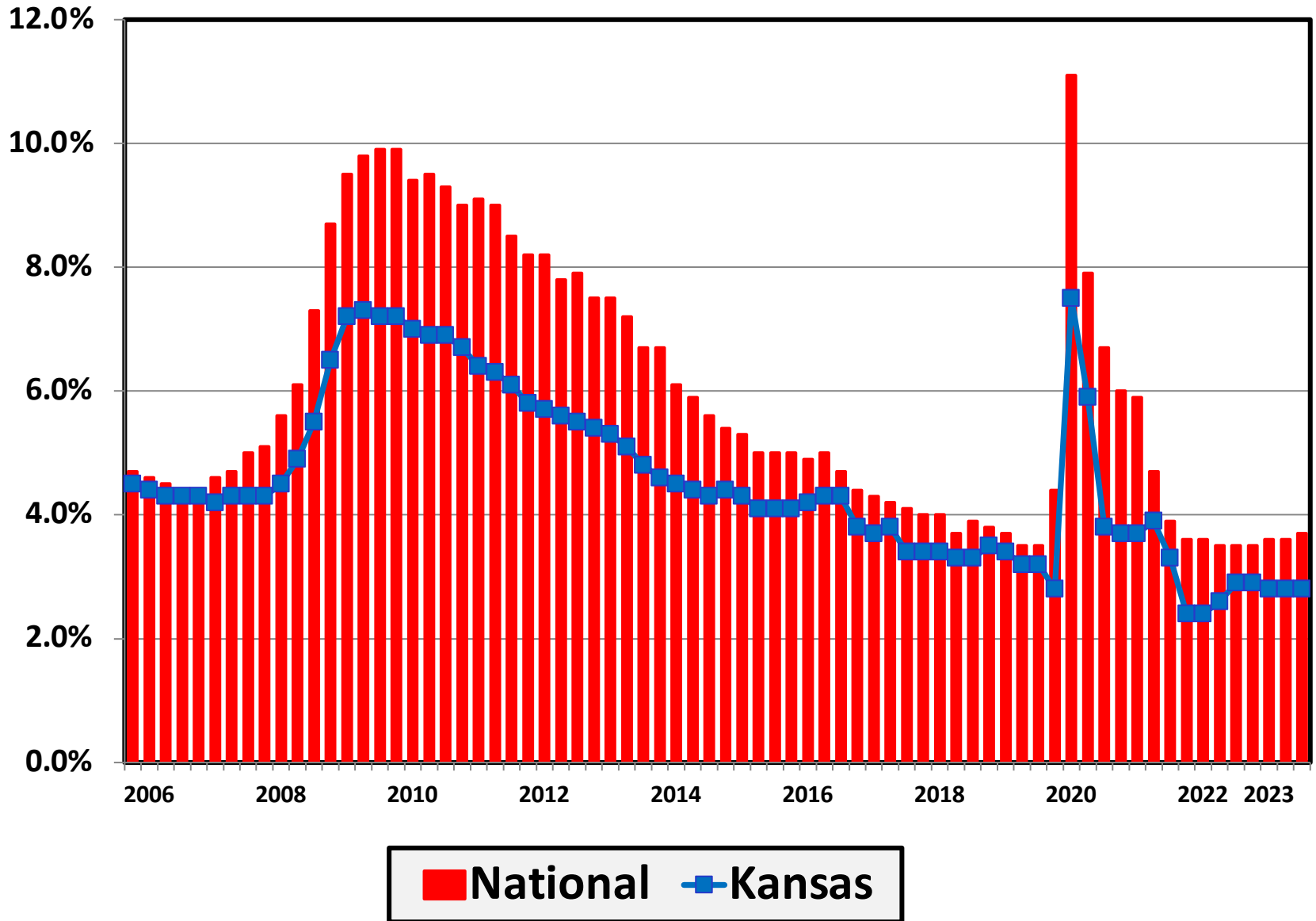


**Chapter 13 Cases in Kansas**  
Amount (in Millions) Paid to Unsecured Creditors  
Fiscal Years 2000 - 2022



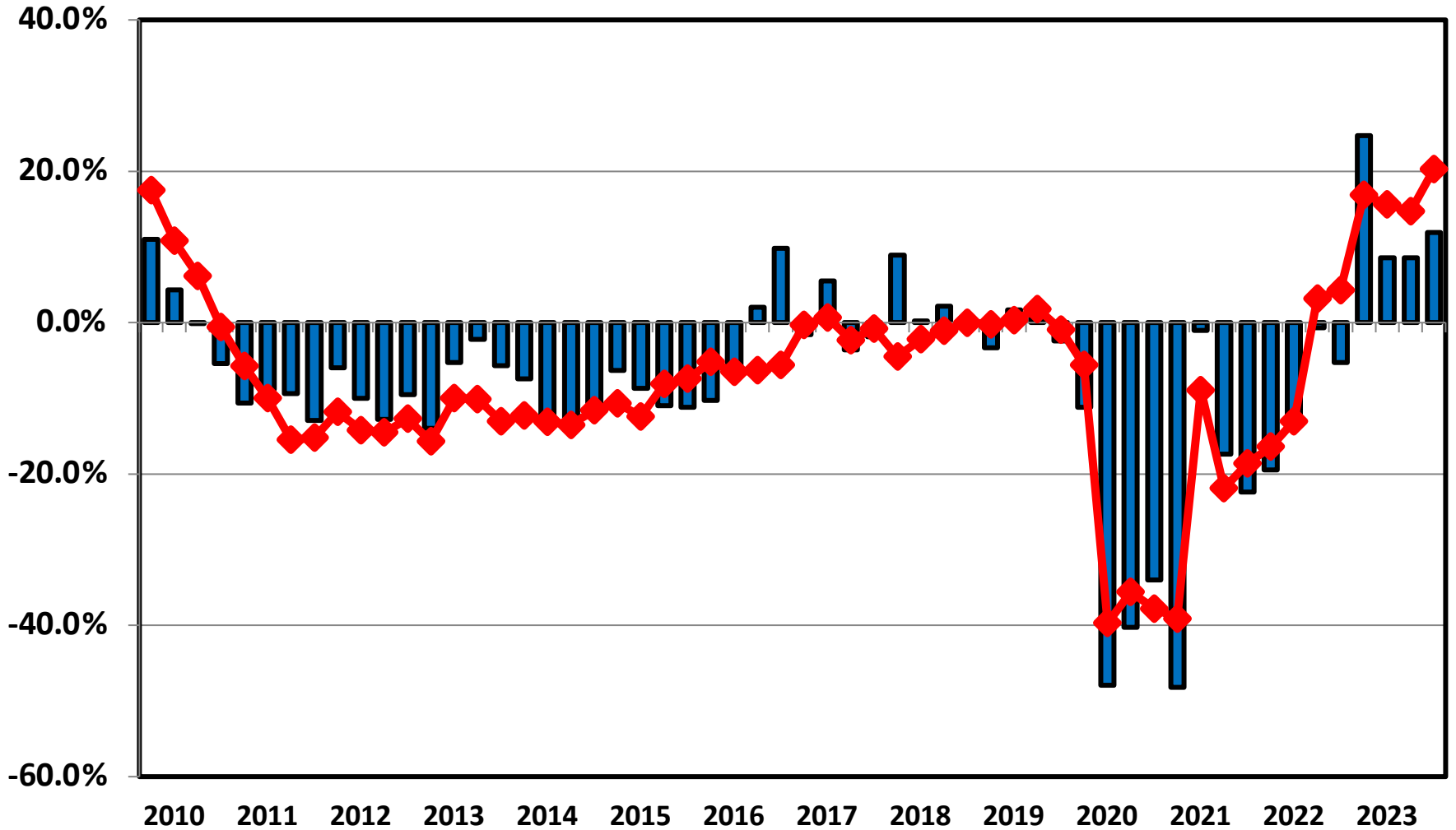
Source: Executive Office for United States Trustees

# Unemployment Rate By Quarter 2006 - 2023



Source: Bureau of Labor Statistics

# Filing Trends By Quarter Kansas vs. National Average (Percent Change From Same Quarter One Year Prior)



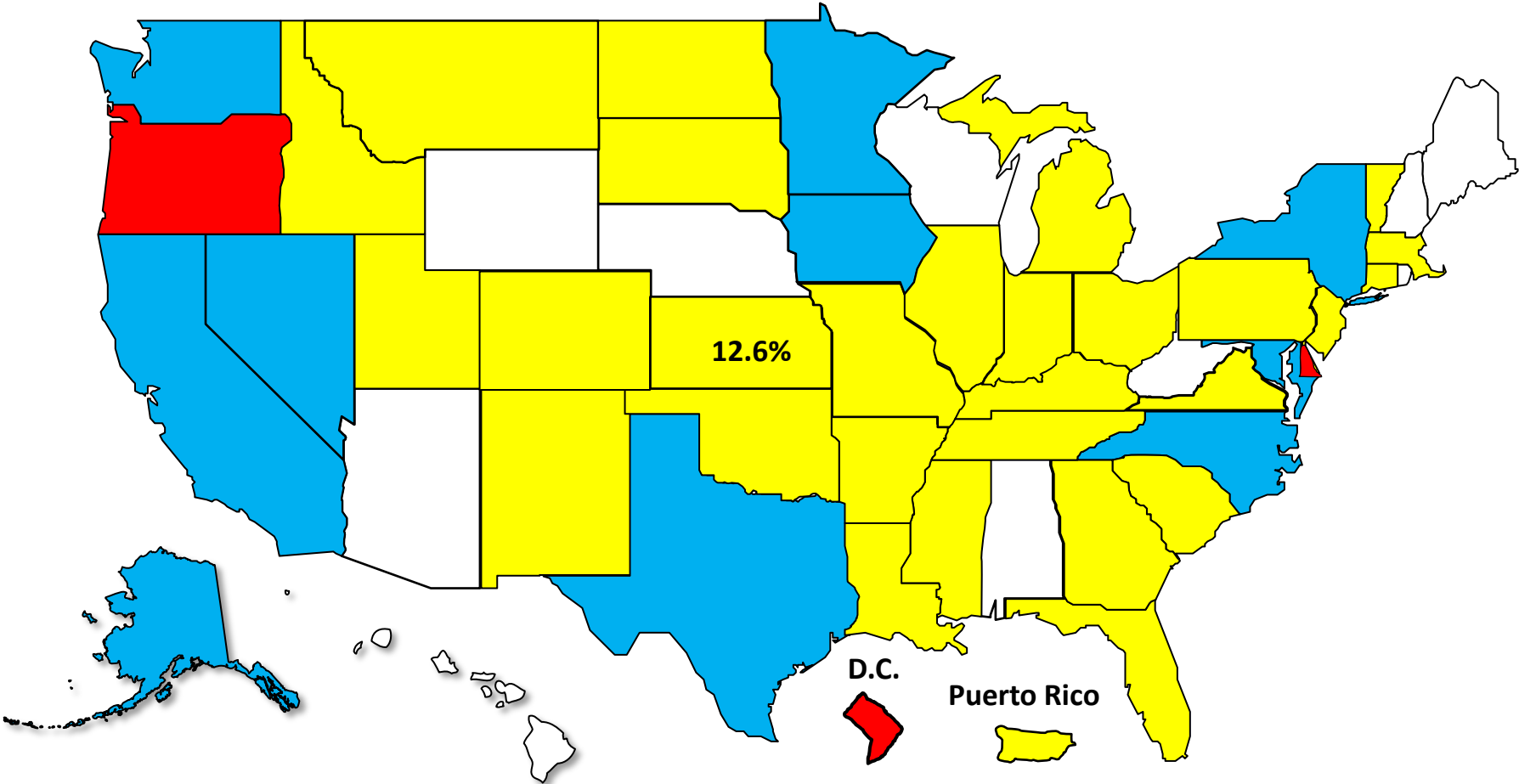
**Kansas**

**National**

# Bankruptcy Filing Trends

## Calendar Year 2023 vs. 2022

National Average = 16.8% Increase

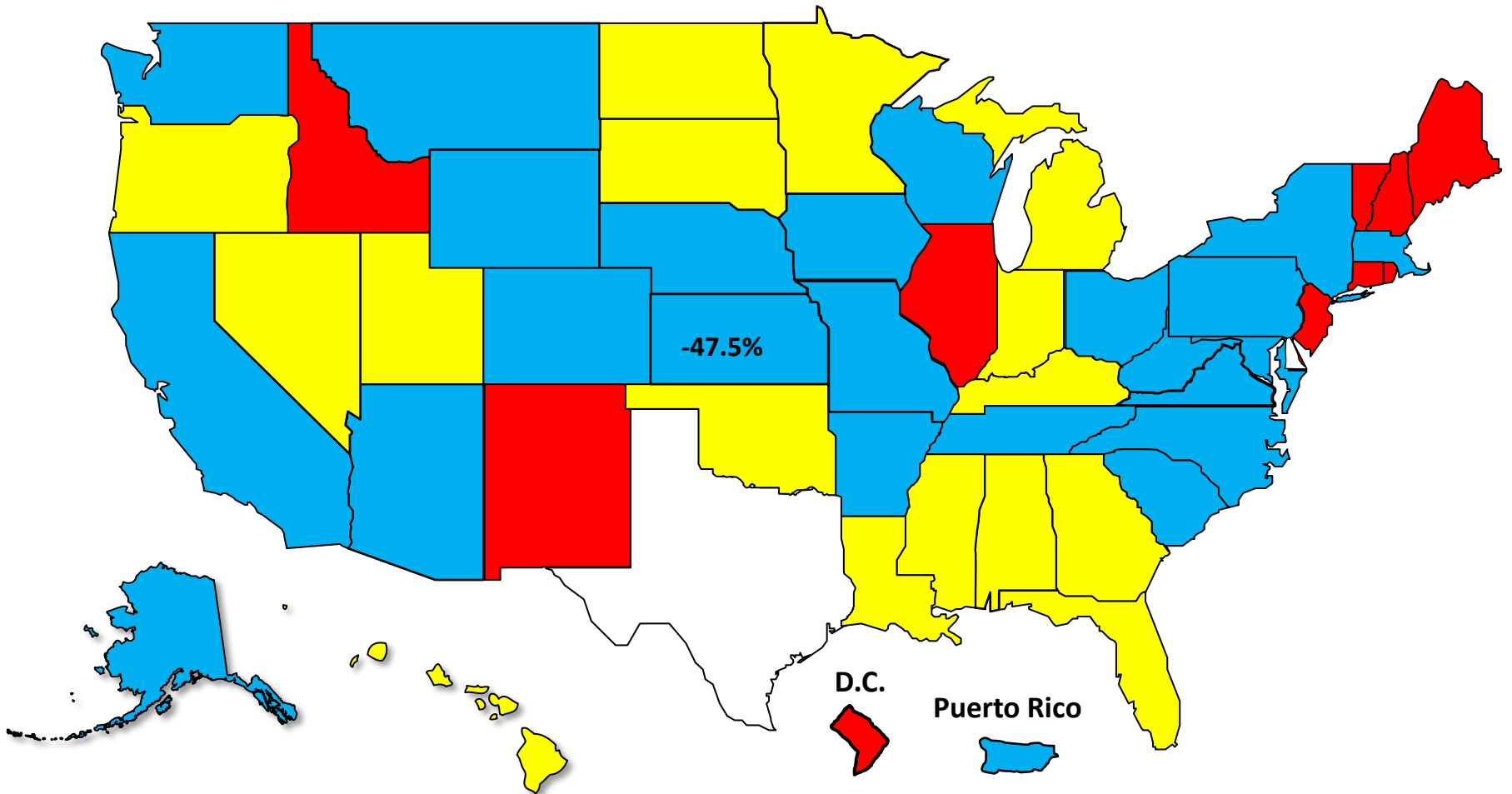




# Bankruptcy Filing Trends During the Pandemic Calendar Year 2023 vs. 2019

**National Average = 41.5% Decrease**

 Decline Under 30.0%  Decline 30.0% – 39.9%  Decline 40.0% – 49.9%  Decline 50.0% or More



# Percent Change in Total Filings

Calendar Year 2023 Compared to 2010 (Great Recession)

(National Average = 71.6% Decrease)

## Amount of Decrease



Under 60%



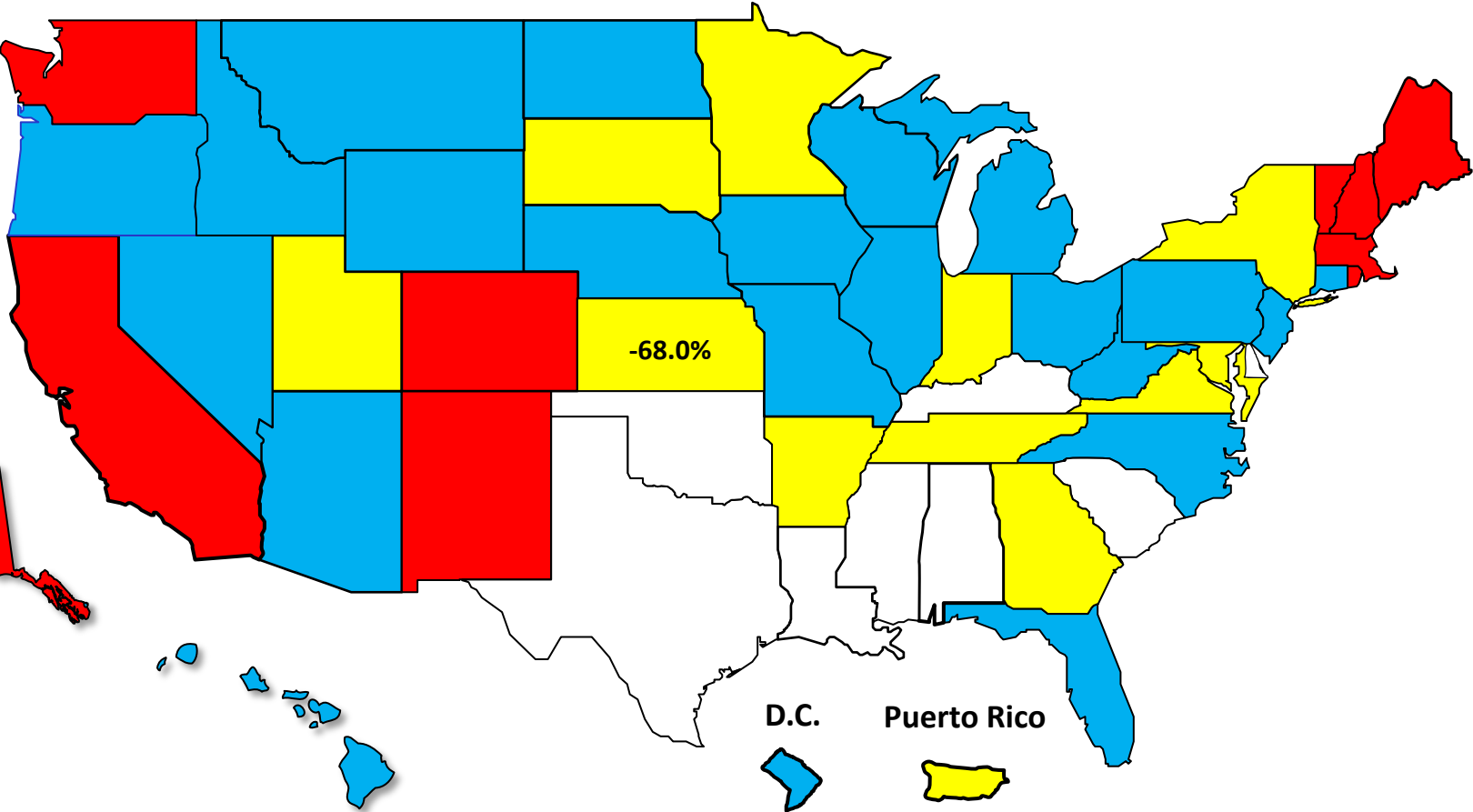
60.0% - 69.9%



70.0% - 79.9%



80.0% or More





AMERICAN  
BANKRUPTCY  
INSTITUTE

[www.abi.org](http://www.abi.org)