

Bankruptcy Filing Trends in Louisiana



AMERICAN
BANKRUPTCY
INSTITUTE

Prepared by: **The American Bankruptcy Institute**

<http://www.abi.org/>

Updated
February 2024

Louisiana



AMERICAN
BANKRUPTCY
INSTITUTE

State at a Glance

	Louisiana	National
Population (7/1/2023)	4,573,749	334,914,895
- Change since April 2020	-1.8%	1.0%
- Foreign Born	4.2%	13.7%
Size (Square Miles)	43,210	3,533,038
Median Household Income	\$57,852	\$75,021
Persons per Household	2.56	2.57
Per Capita Income	\$32,981	\$41,261
Median Home Value	\$198,300	\$281,900
Homeownership Rate	67.2%	64.8%
High School Graduate (or Higher)	86.7%	89.1%
College Graduate (or Higher)	26.1%	34.3%
Disabled	11.5%	8.9%
No Health Insurance	8.3%	9.3%
In Poverty	18.6%	11.5%

Source: U.S. Census Bureau January 2024

Prepared by: The American Bankruptcy Institute

<http://www.abi.org>

Bankruptcy Filings in Louisiana

Calendar Years 2000 - 2023

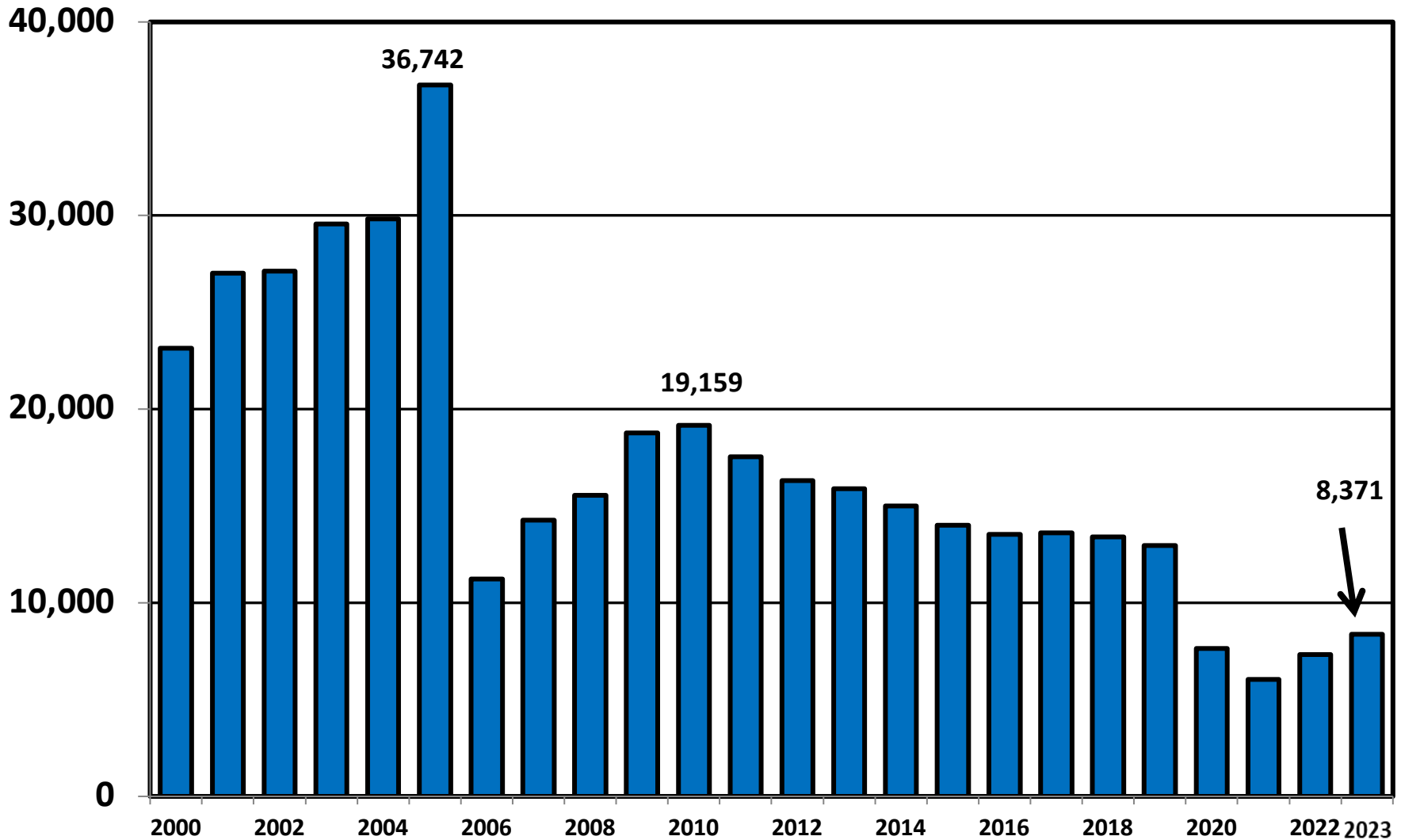
Year	Total	Chapter 7	Chapter 11	Chapter 13	Other Cases*
2023	8,371	1,889	64	6,413	5
2022	7,321	1,730	45	5,541	5
2021	6,049	2,252	63	3,733	1
2020	7,642	3,004	65	4,564	9
2019	12,951	4,023	84	8,830	14
2018	13,390	3,995	84	9,299	12
2017	13,606	4,144	116	9,330	16
2016	13,545	3,931	97	9,500	17
2015	13,994	4,062	105	9,822	5
2014	14,999	4,383	128	10,481	7
2013	15,890	5,228	85	10,572	5
2012	16,307	5,741	93	10,467	6
2011	17,547	6,239	98	11,194	16
2010	19,159	7,429	142	11,577	11
2009	18,780	6,798	148	11,823	11
2008	15,555	5,600	87	9,859	9
2007	14,277	4,806	109	9,330	32
2006	11,226	4,272	141	6,799	14
2005	36,742	25,415	103	11,203	21
2004	29,823	18,236	127	11,457	3
2003	29,575	18,052	118	11,365	40
2002	27,133	16,546	153	10,411	23
2001	27,019	16,603	145	10,264	7
2000	23,135	13,316	141	9,669	9
*Chapters 9, 12 and 15					

Business Bankruptcy Cases Filed - Louisiana
Years Ended December 31, 2000 - 2023

CALENDAR YEAR	TOTAL FILINGS	CHAPTER 7	CHAPTER 11	CHAPTER 13	OTHER CASES*
2023	217	127	62	23	5
2022	157	92	44	16	5
2021	189	122	57	9	1
2020	239	147	64	19	9
2019	352	235	78	25	14
2018	310	193	80	25	12
2017	365	208	111	30	16
2016	327	191	86	33	17
2015	315	190	97	23	5
2014	388	222	121	38	7
2013	371	259	75	32	5
2012	486	306	89	85	6
2011	622	396	87	123	16
2010	760	437	137	175	11
2009	869	435	142	281	11
2008	607	331	84	183	9
2007	510	191	101	186	32
2006	476	140	137	185	14
2005	718	412	88	197	21
2004	622	310	110	199	3
2003	499	247	95	117	40
2002	672	368	137	144	23
2001	716	419	135	155	7
2000	619	356	133	121	9
* Chapters 9, 12 and 15					

Total Bankruptcy Cases Filed in Louisiana

Calendar Years 2000 - 2023



Total Filings Relative to Population 2000 - 2023



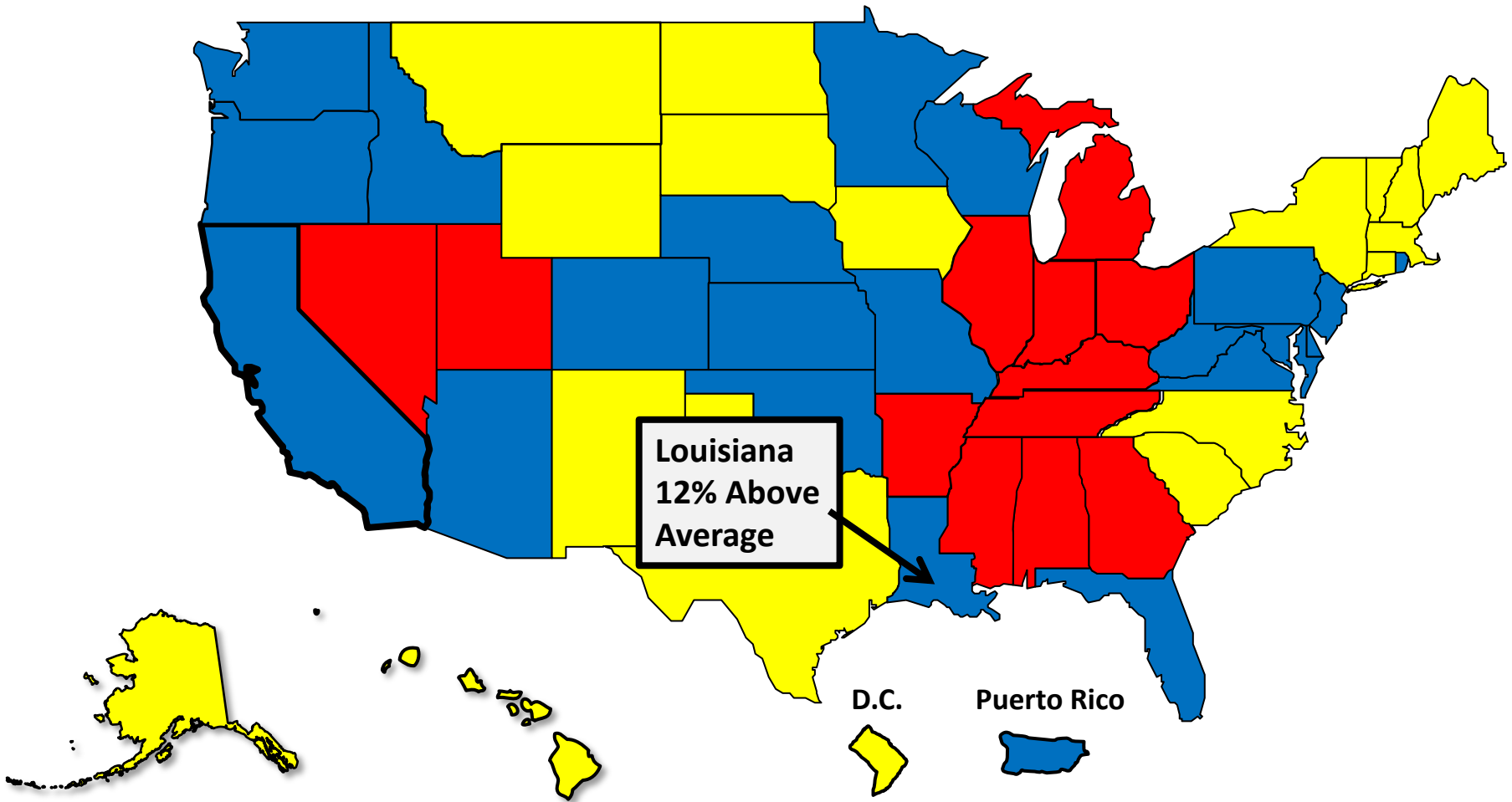
More than 25%
Above Average



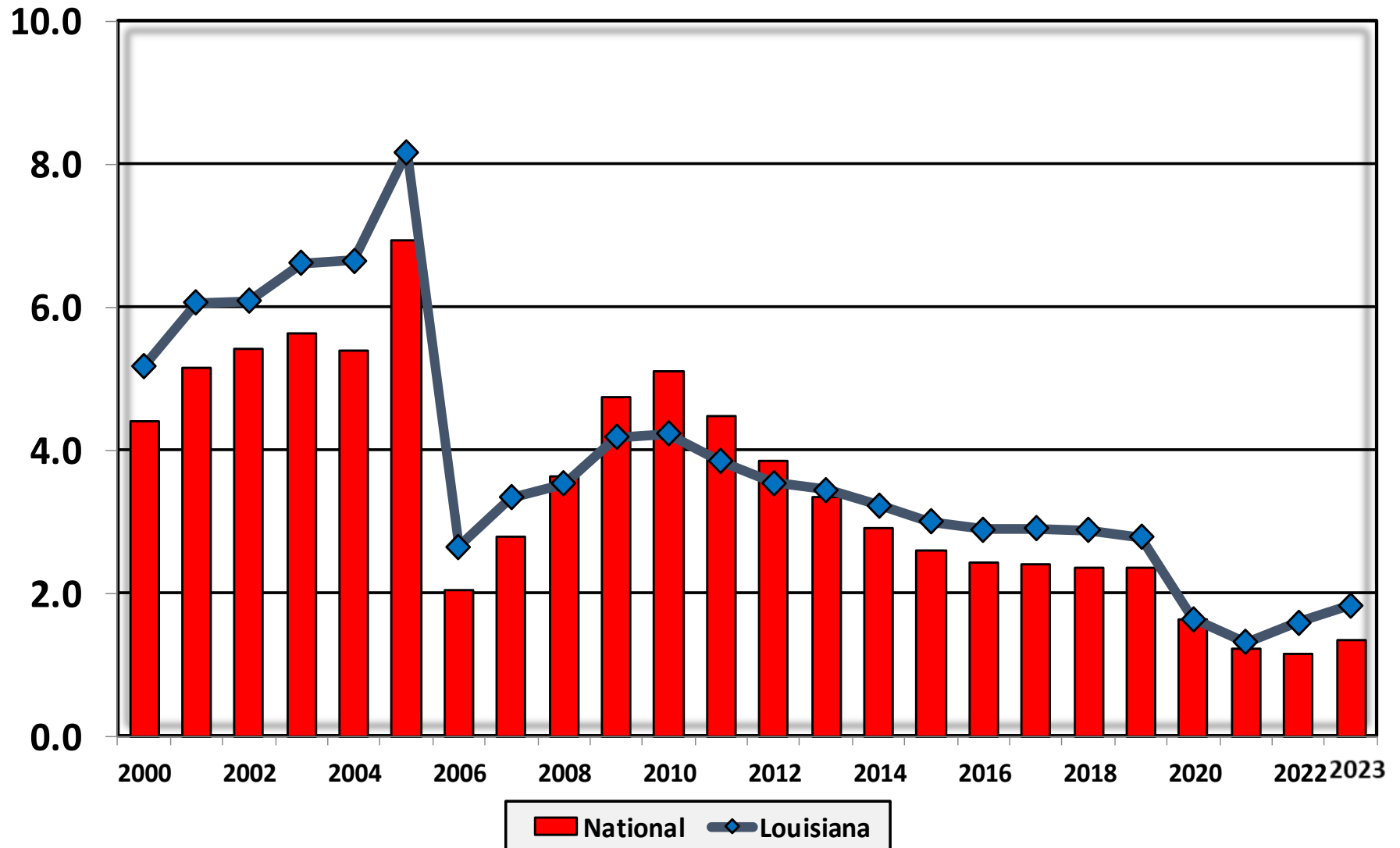
Within 25%
of Average



More than 25%
Below Average

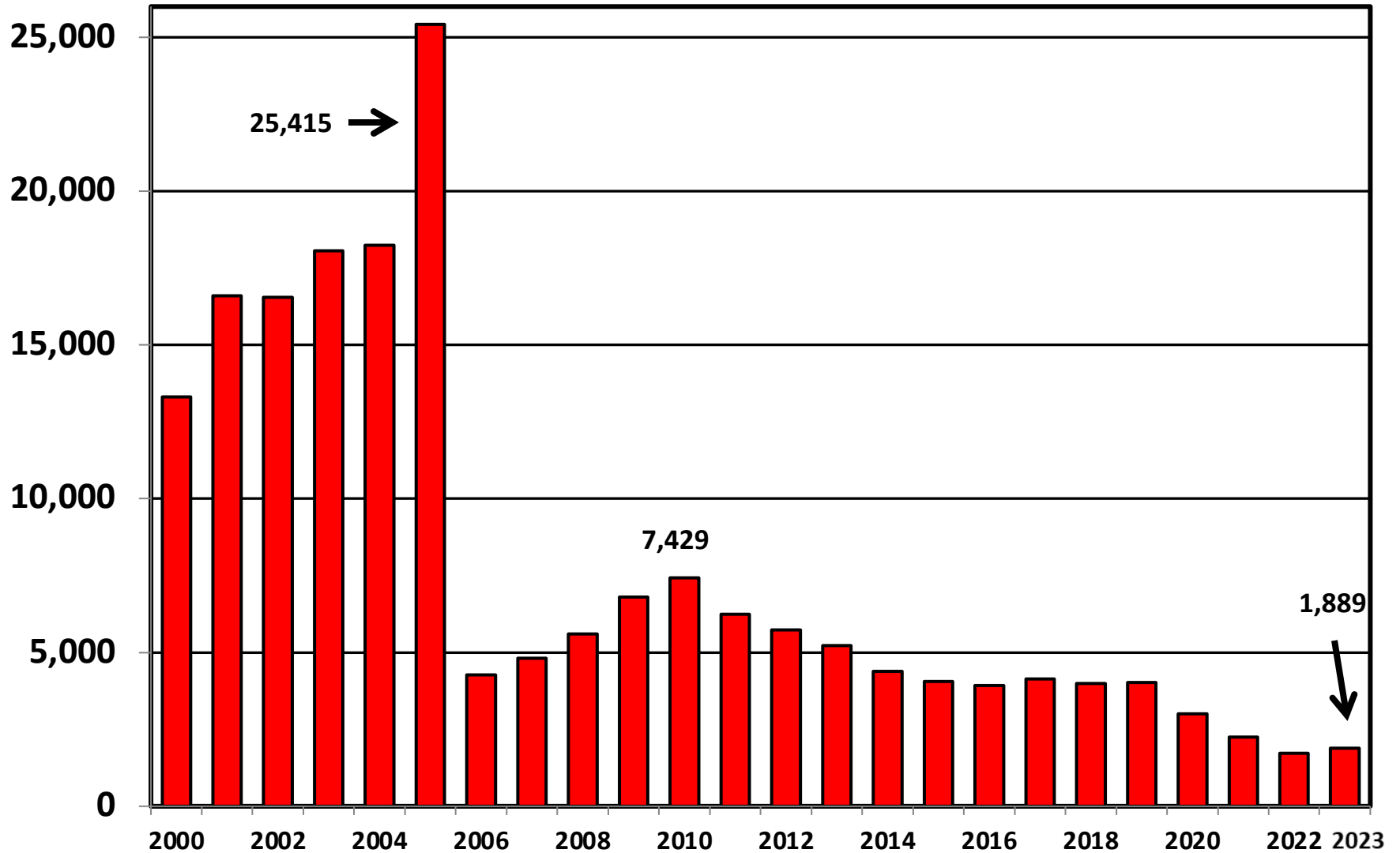


Bankruptcy Filings per 1,000 Population Louisiana vs. National Average 2000 - 2023

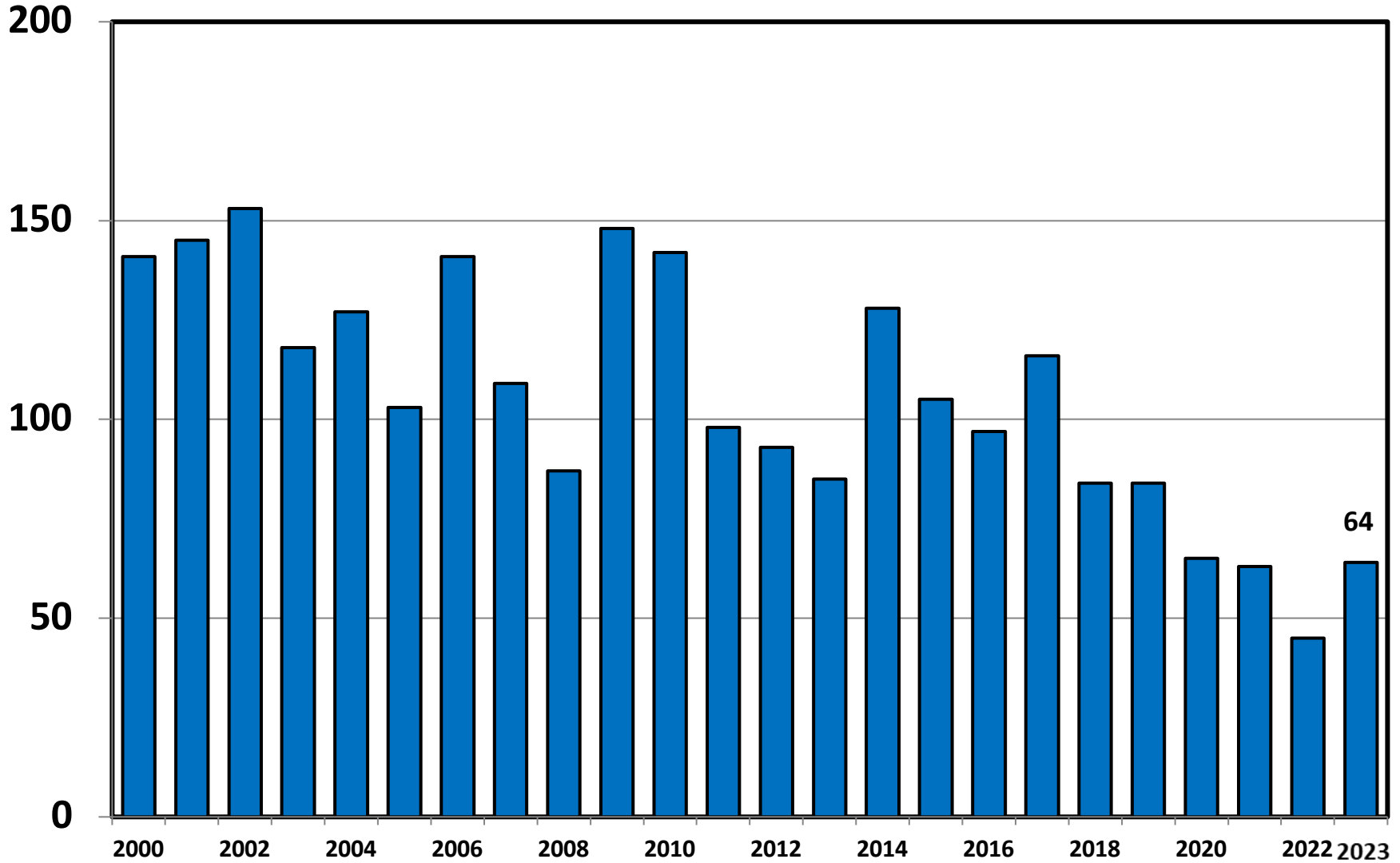


Chapter 7 Cases Filed In Louisiana

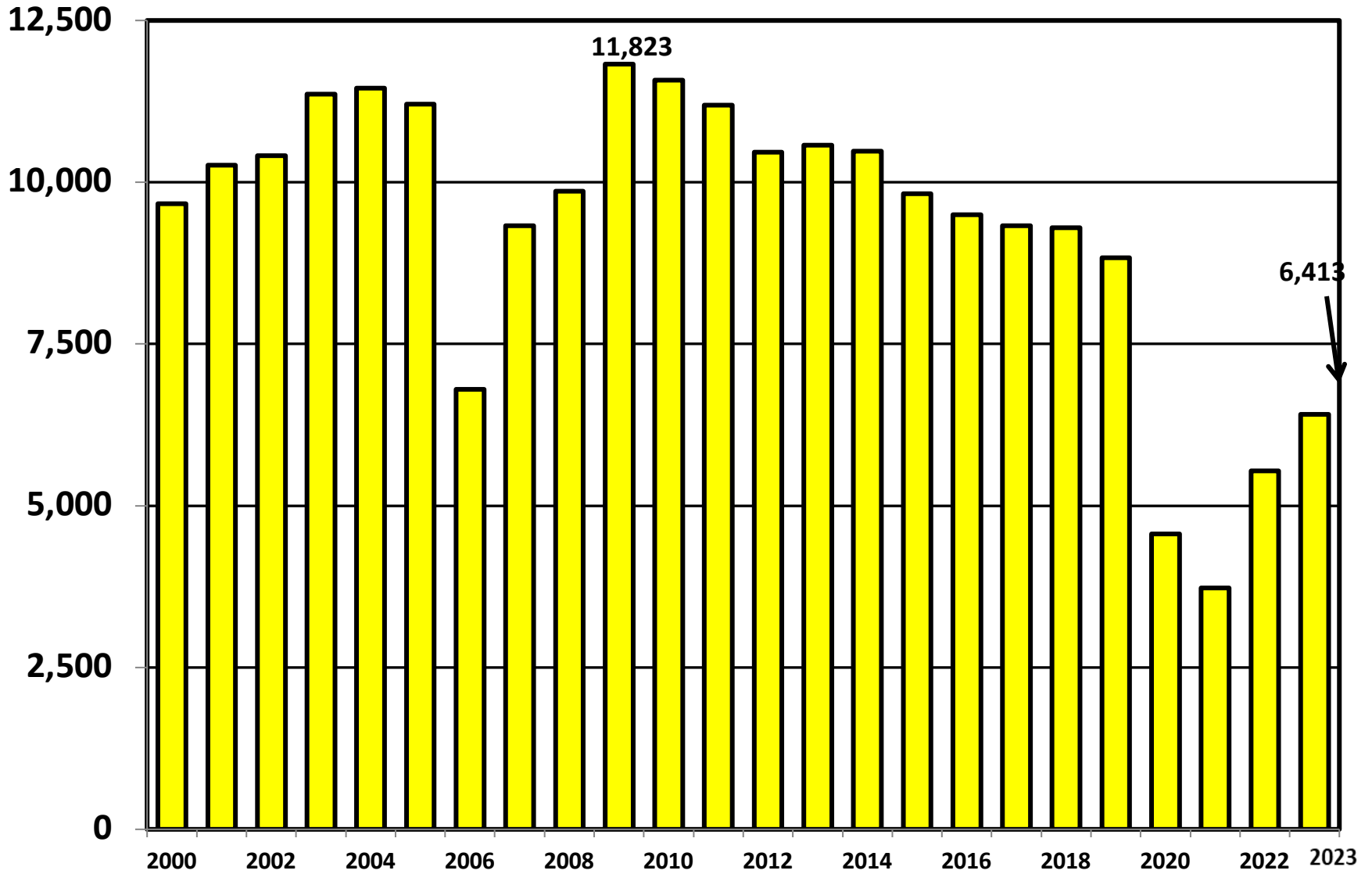
Calendar Years 2000 - 2023



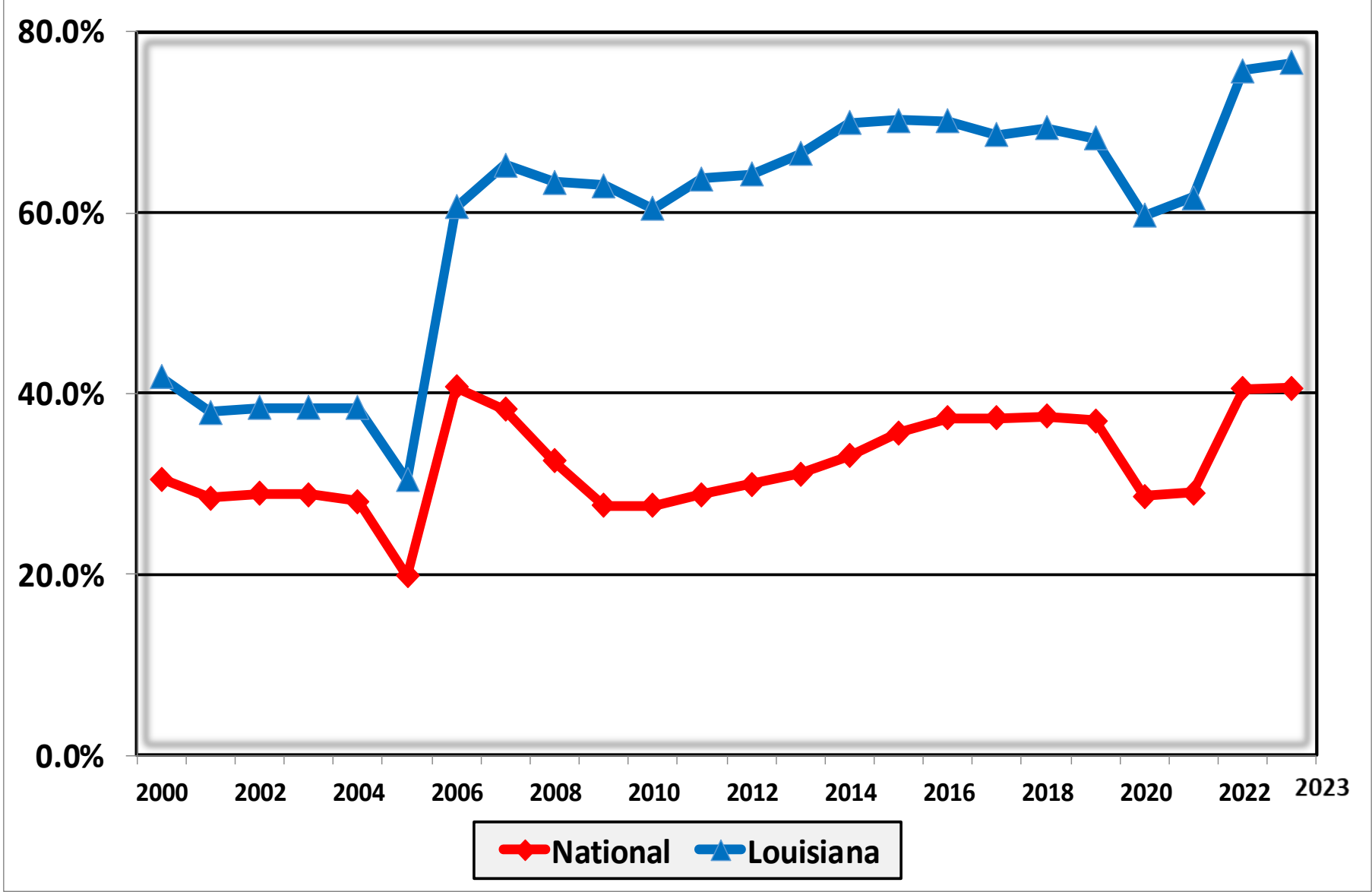
Chapter 11 Cases Filed in Louisiana 2000 - 2023



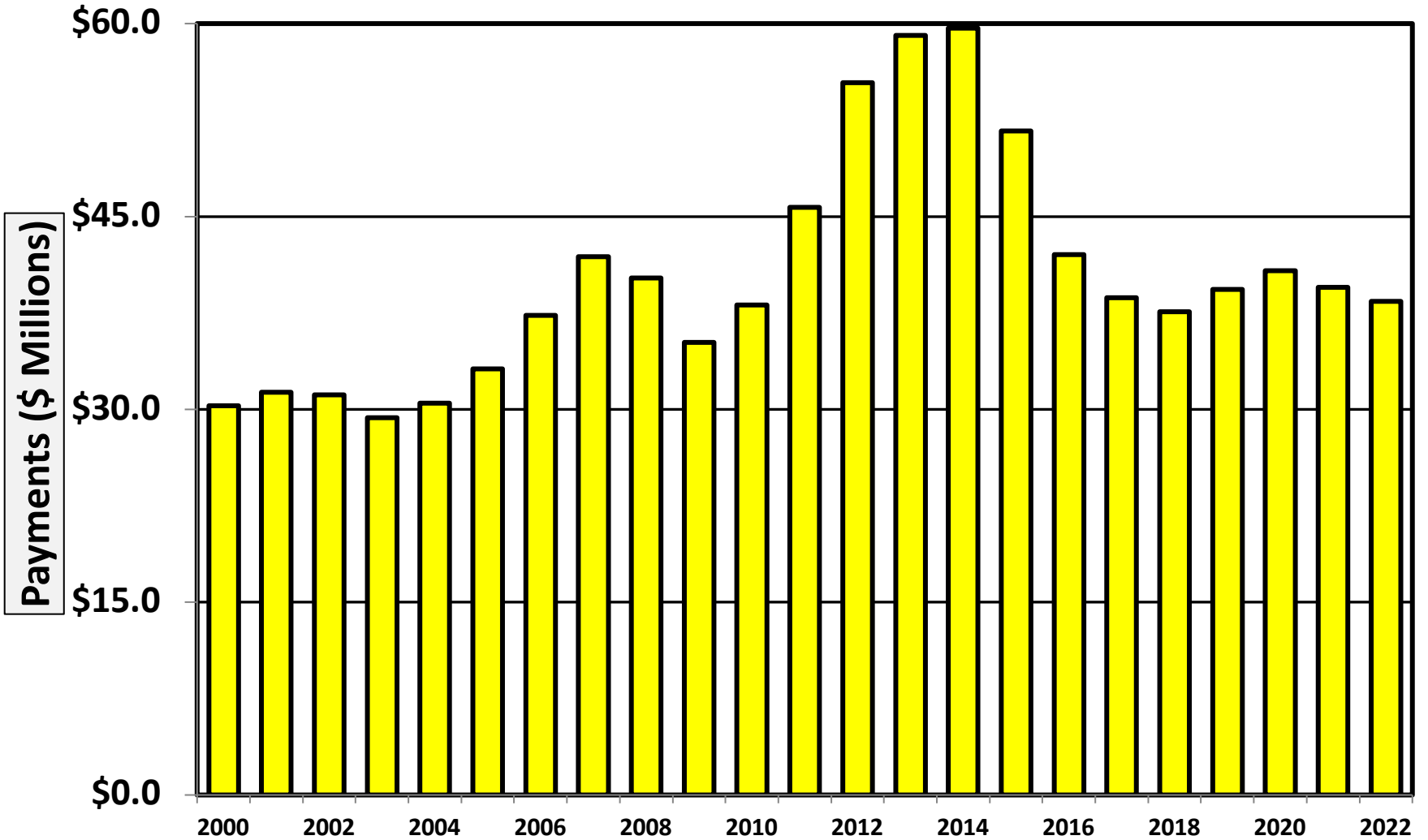
Chapter 13 Cases Filed in Louisiana 2000 - 2023



**Percent of Cases Filed as Chapter 13
Calendar Years 2000 - 2023**

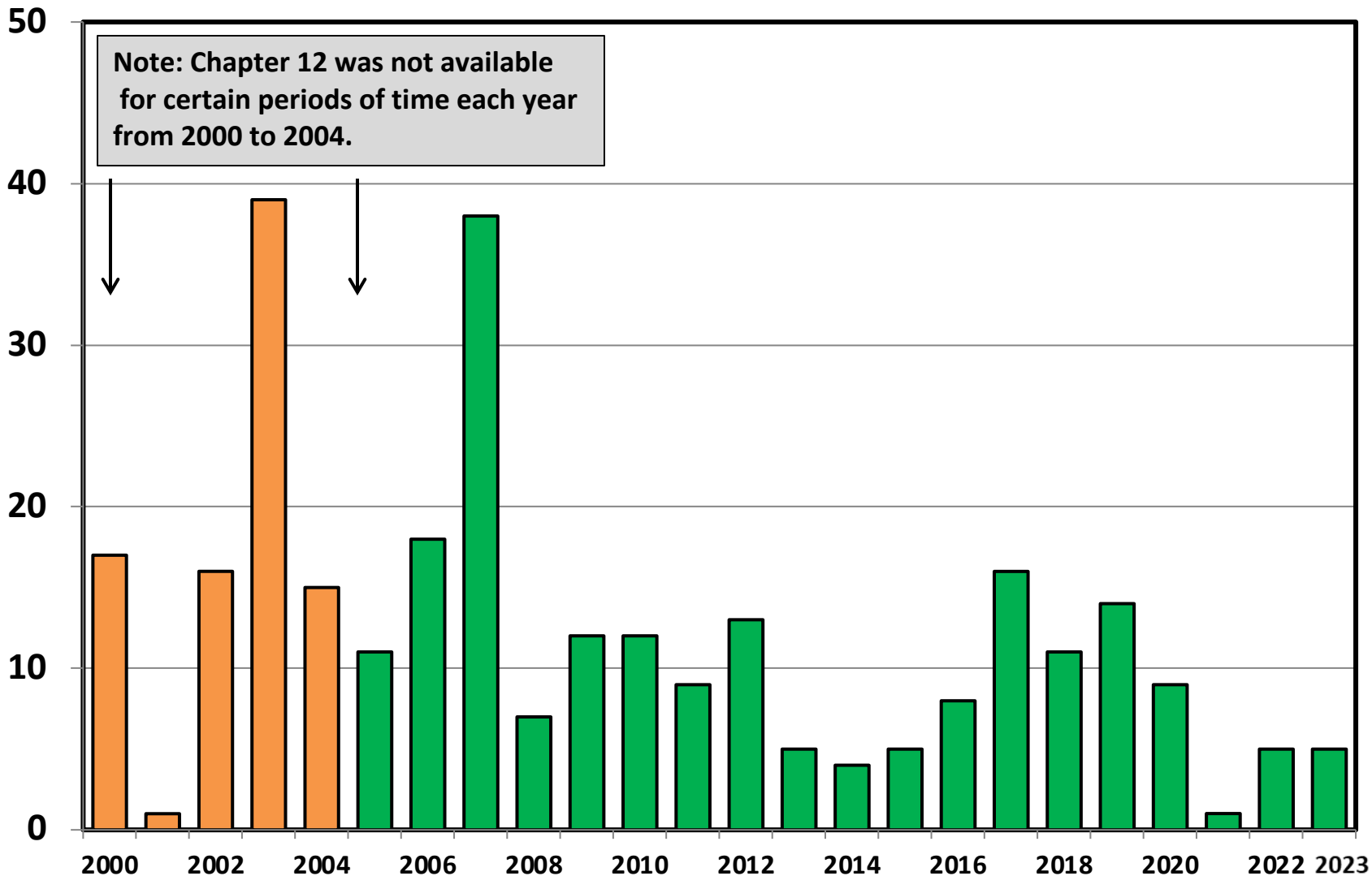


Chapter 13 Cases in Louisiana
Amount (in Millions) Paid to Unsecured Creditors
Fiscal Years 2000 - 2022

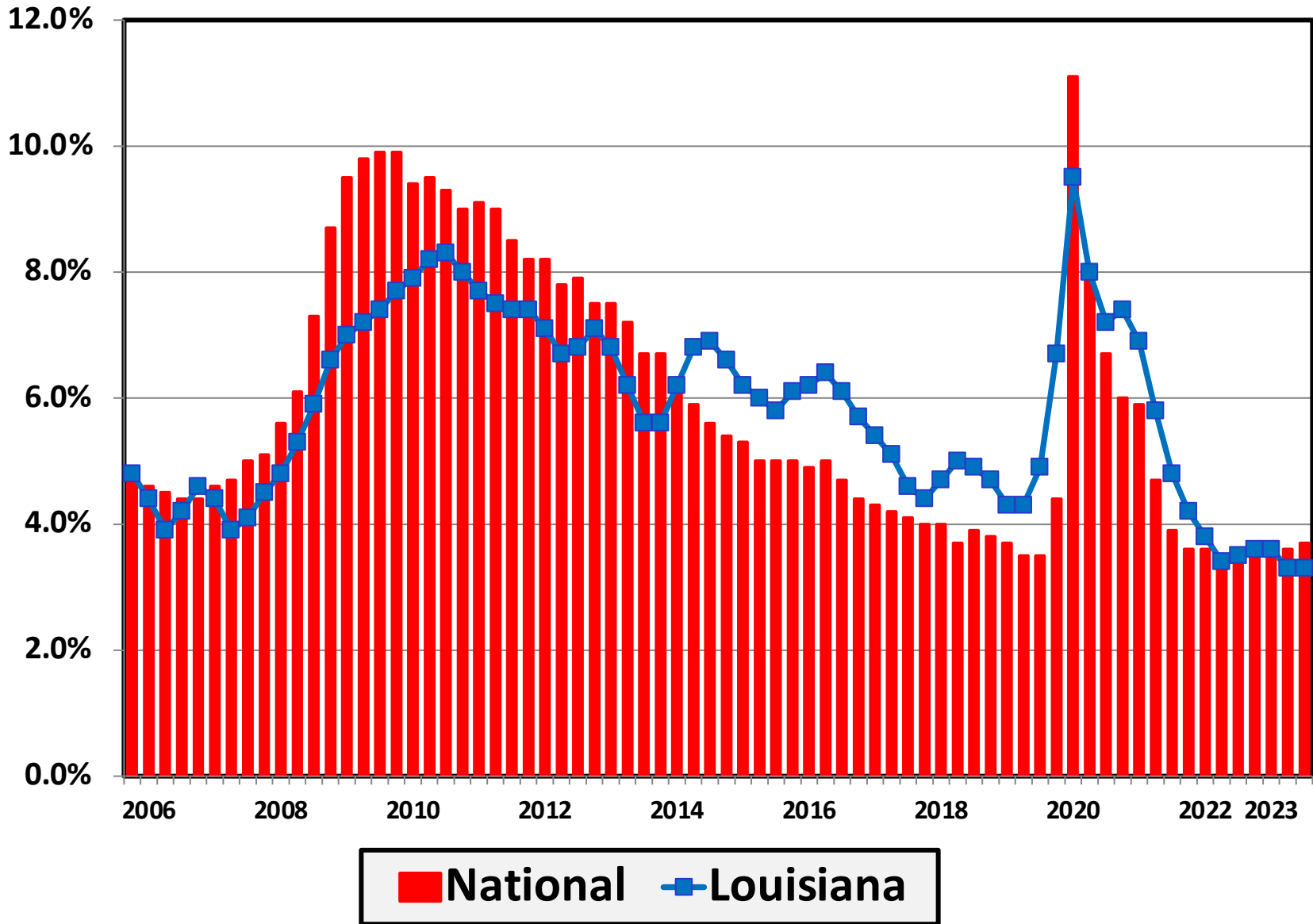


Source: Executive Office for United States Trustees

Chapter 12 Cases Filed in Louisiana 2000 - 2023

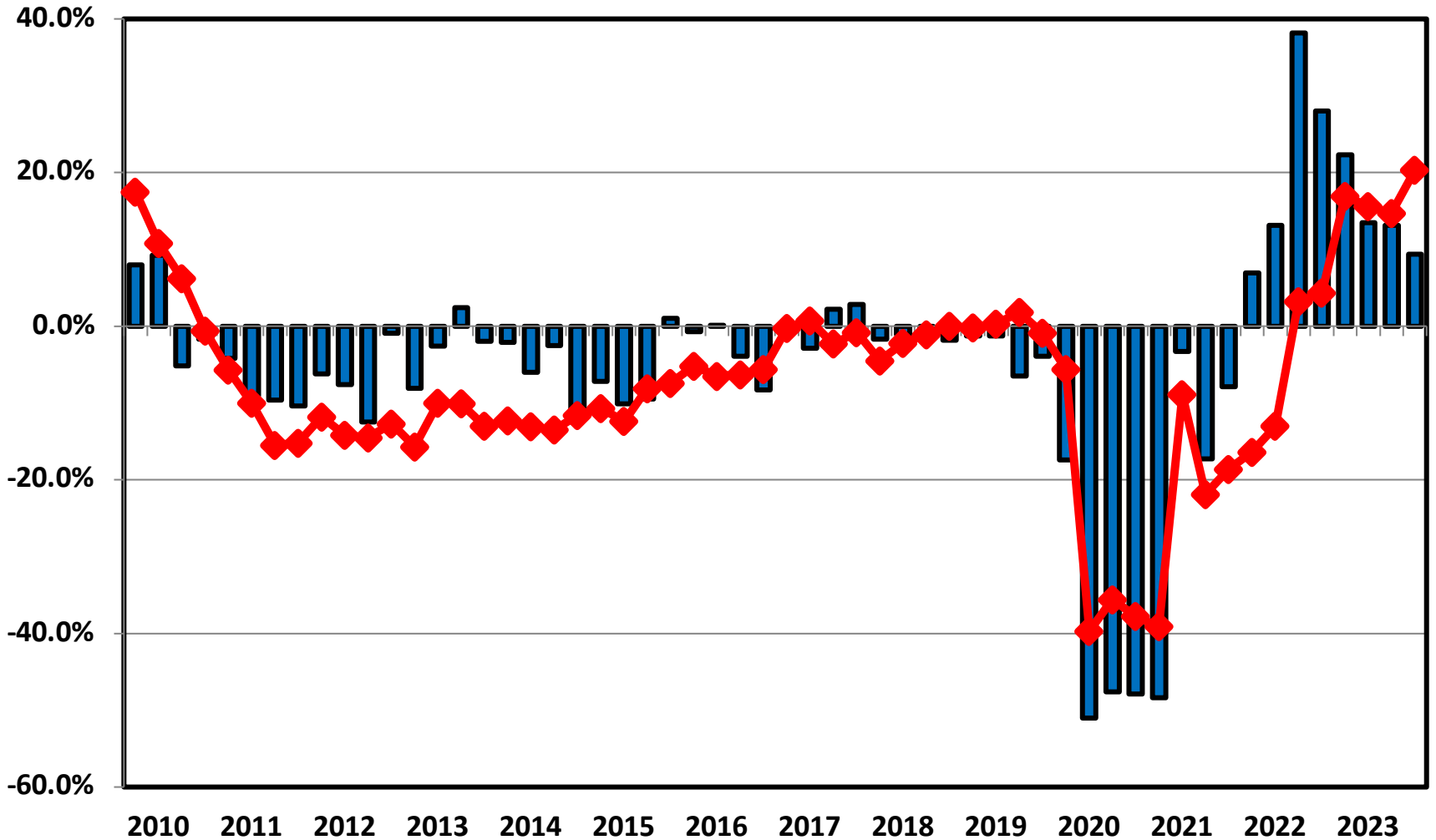


Unemployment Rate By Quarter 2006 - 2023



Source: Bureau of Labor Statistics

Filing Trends By Quarter Louisiana vs. National Average (Percent Change From Same Quarter One Year Prior)



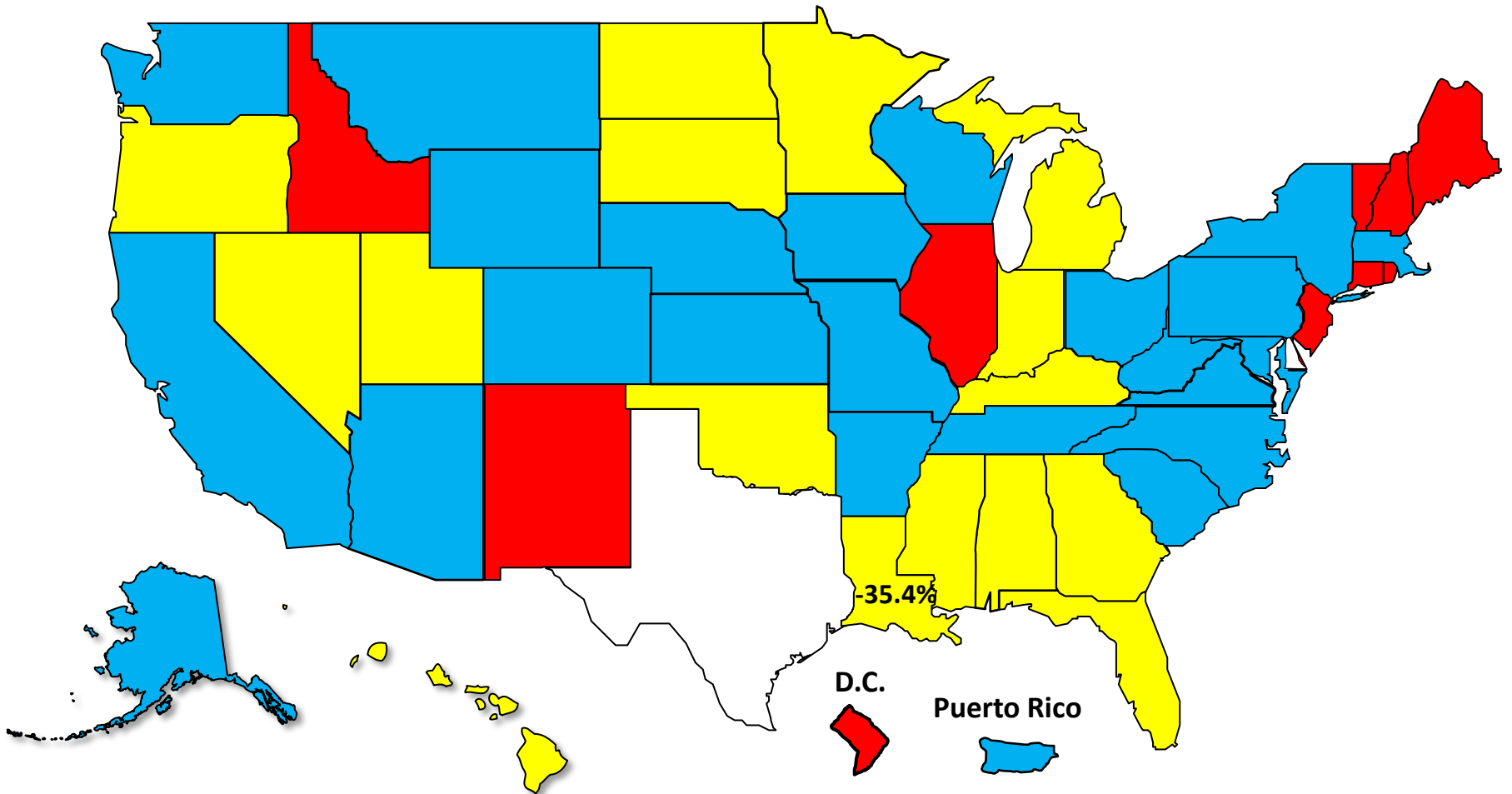
■ Louisiana **◆ National**

Bankruptcy Filing Trends During the Pandemic

Calendar Year 2023 vs. 2019

National Average = 41.5% Decrease

 Decline Under 30.0%  Decline 30.0% – 39.9%  Decline 40.0% – 49.9%  Decline 50.0% or More

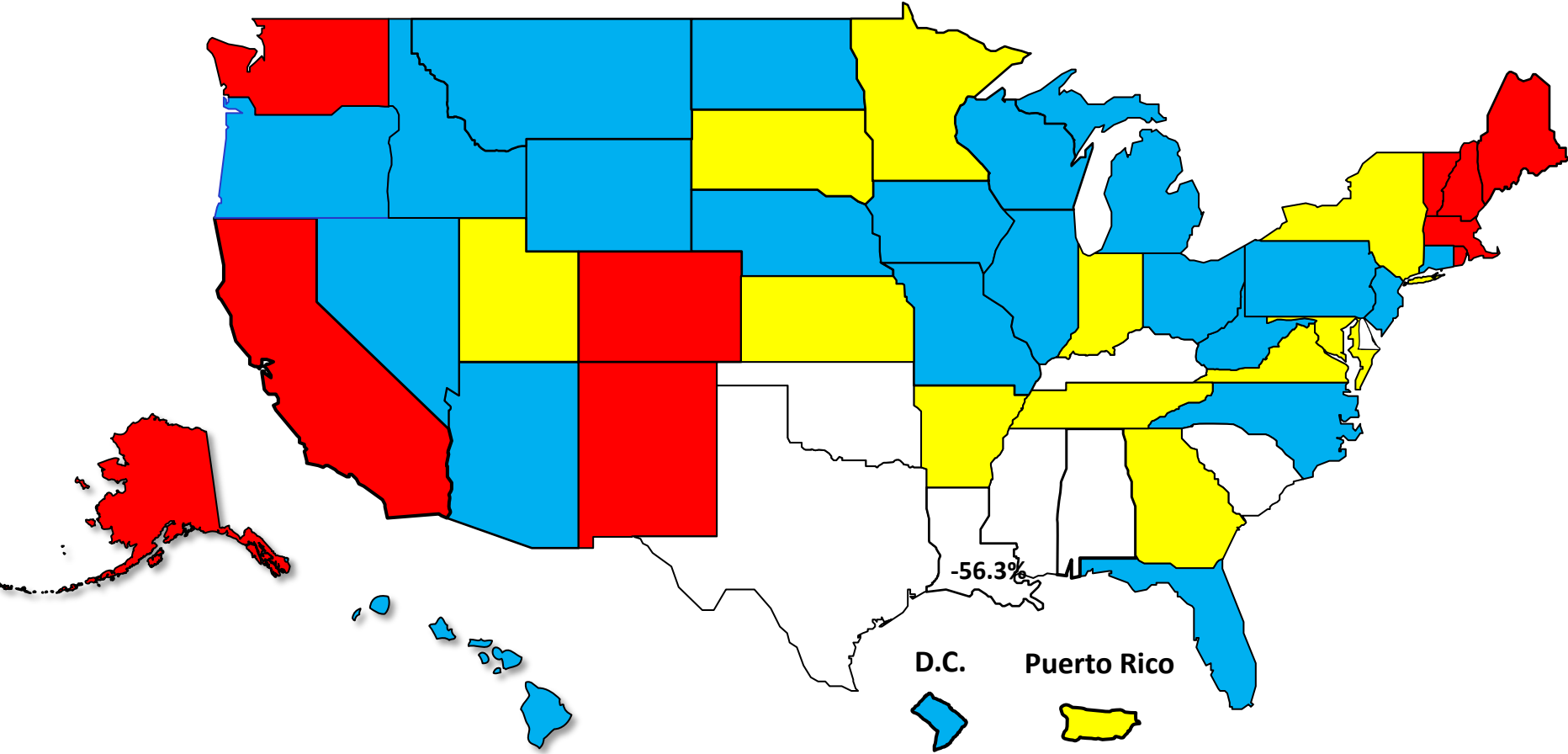


Percent Change in Total Filings

Calendar Year 2023 Compared to 2010 (Great Recession)

(National Average = 71.6% Decrease)

Amount of Decrease





AMERICAN
BANKRUPTCY
INSTITUTE

www.abi.org