

# Bankruptcy Filing Trends in Maryland



Prepared by: **The American Bankruptcy Institute**  
<http://www.abi.org/>



AMERICAN  
BANKRUPTCY  
INSTITUTE

Updated  
February 2024

# Maryland



## State at a Glance

	Maryland	National
<b>Population (7/1/2023)</b>	<b>6,180,253</b>	<b>334,914,895</b>
- Change since April 2020	.05%	1.0%
- Foreign Born	15.7%	13.7%
<b>Size (Square Miles)</b>	<b>9,711</b>	<b>3,533,038</b>
<b>Median Household Income</b>	<b>\$98,461</b>	<b>\$75,021</b>
<b>Persons per Household</b>	<b>2.60</b>	<b>2.57</b>
<b>Per Capita Income</b>	<b>\$49,865</b>	<b>\$41,261</b>
<b>Median Home Value</b>	<b>\$380,500</b>	<b>\$281,900</b>
<b>Homeownership Rate</b>	<b>67.5%</b>	<b>64.8%</b>
<b>High School Graduate (or Higher)</b>	<b>91.0%</b>	<b>89.1%</b>
<b>College Graduate (or Higher)</b>	<b>42.2%</b>	<b>34.3%</b>
<b>Disabled</b>	<b>7.8%</b>	<b>8.9%</b>
<b>No Health Insurance</b>	<b>7.1%</b>	<b>9.3%</b>
<b>In Poverty</b>	<b>9.6%</b>	<b>11.5%</b>
<b>Source: U.S. Census Bureau January 2024</b>		

Prepared by: The American Bankruptcy Institute

<http://www.abi.org>

# Bankruptcy Filings in Maryland

## Calendar Years 2000 - 2023

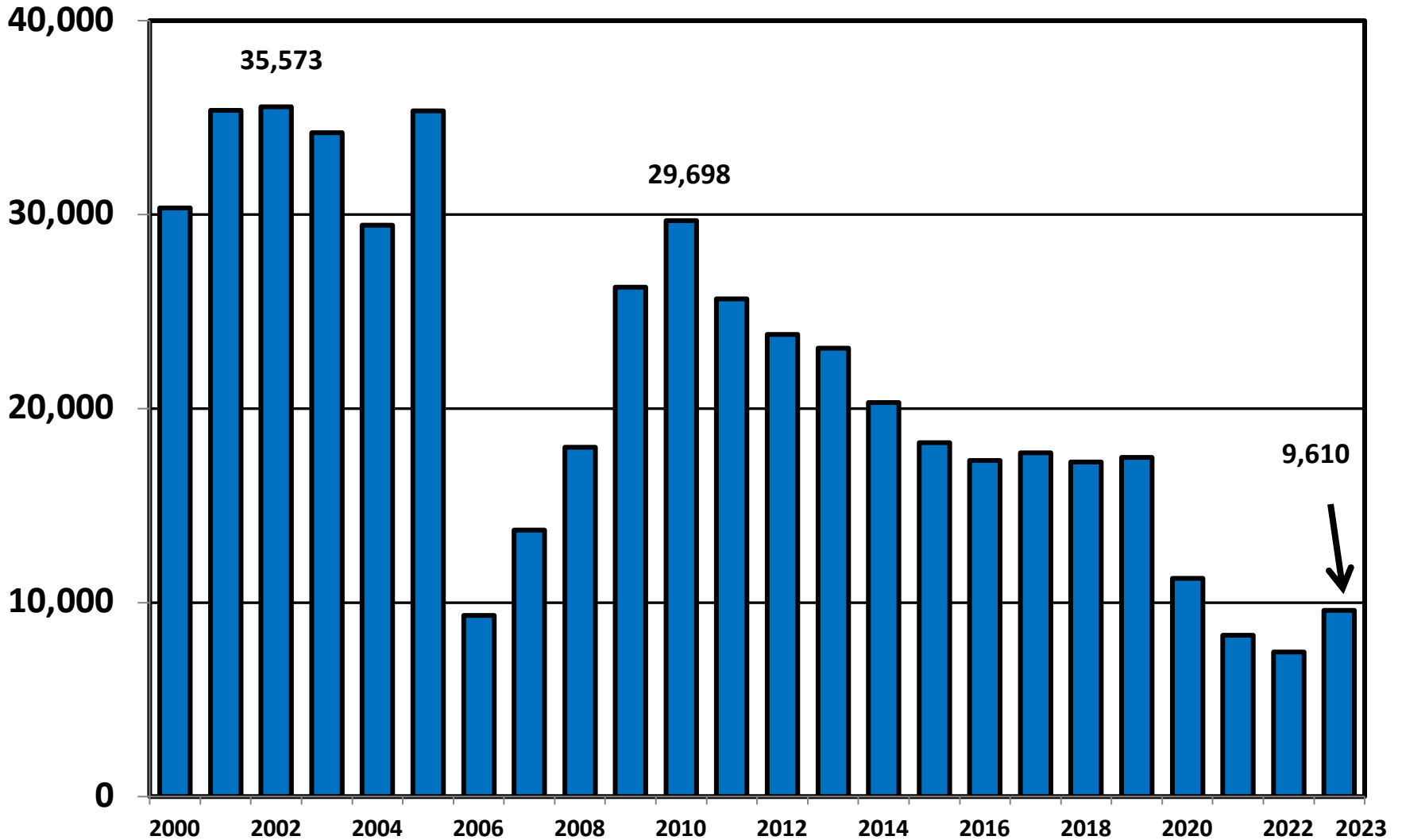
Year	Total	Chapter 7	Chapter 11	Chapter 13	Other Cases*
2023	9,610	5,990	78	3,542	0
2022	7,442	4,780	61	2,599	2
2021	8,323	6,117	86	2,120	0
2020	11,249	8,418	79	2,749	3
2019	17,488	11,010	107	6,366	5
2018	17,255	11,361	118	5,770	6
2017	17,716	11,942	128	5,643	3
2016	17,341	11,521	132	5,687	1
2015	18,247	12,658	171	5,412	6
2014	20,323	14,672	158	5,491	2
2013	23,118	17,304	176	5,635	3
2012	23,814	19,027	175	4,609	3
2011	25,662	20,418	183	5,056	5
2010	29,698	21,959	276	7,456	7
2009	26,264	19,592	280	6,390	2
2008	18,005	11,834	226	5,944	1
2007	13,733	7,119	150	6,463	1
2006	9,349	4,663	95	4,591	0
2005	35,345	27,895	131	7,319	0
2004	29,467	20,384	112	8,971	0
2003	34,231	22,853	194	11,182	2
2002	35,573	23,447	412	11,711	3
2001	35,388	24,356	174	10,858	0
2000	30,335	20,572	166	9,597	0
*Chapters 9, 12 and 15					

**Business Bankruptcy Cases Filed - Maryland  
Years Ended December 31, 2000 - 2023**

<b>CALENDAR YEAR</b>	<b>TOTAL FILINGS</b>	<b>CHAPTER 7</b>	<b>CHAPTER 11</b>	<b>CHAPTER 13</b>	<b>OTHER CASES*</b>
<b>2023</b>	<b>261</b>	<b>155</b>	<b>73</b>	<b>33</b>	<b>0</b>
<b>2022</b>	<b>205</b>	<b>125</b>	<b>52</b>	<b>26</b>	<b>2</b>
<b>2021</b>	<b>238</b>	<b>140</b>	<b>75</b>	<b>23</b>	<b>0</b>
<b>2020</b>	<b>278</b>	<b>176</b>	<b>75</b>	<b>24</b>	<b>3</b>
<b>2019</b>	<b>363</b>	<b>225</b>	<b>87</b>	<b>46</b>	<b>5</b>
<b>2018</b>	<b>352</b>	<b>214</b>	<b>96</b>	<b>36</b>	<b>6</b>
<b>2017</b>	<b>349</b>	<b>203</b>	<b>106</b>	<b>37</b>	<b>3</b>
<b>2016</b>	<b>391</b>	<b>250</b>	<b>96</b>	<b>44</b>	<b>1</b>
<b>2015</b>	<b>451</b>	<b>282</b>	<b>120</b>	<b>43</b>	<b>6</b>
<b>2014</b>	<b>468</b>	<b>297</b>	<b>123</b>	<b>46</b>	<b>2</b>
<b>2013</b>	<b>555</b>	<b>378</b>	<b>129</b>	<b>45</b>	<b>3</b>
<b>2012</b>	<b>614</b>	<b>429</b>	<b>141</b>	<b>41</b>	<b>3</b>
<b>2011</b>	<b>658</b>	<b>469</b>	<b>143</b>	<b>41</b>	<b>5</b>
<b>2010</b>	<b>832</b>	<b>571</b>	<b>202</b>	<b>52</b>	<b>7</b>
<b>2009</b>	<b>923</b>	<b>664</b>	<b>202</b>	<b>55</b>	<b>2</b>
<b>2008</b>	<b>628</b>	<b>411</b>	<b>171</b>	<b>45</b>	<b>1</b>
<b>2007</b>	<b>380</b>	<b>229</b>	<b>105</b>	<b>45</b>	<b>1</b>
<b>2006</b>	<b>333</b>	<b>172</b>	<b>83</b>	<b>78</b>	<b>0</b>
<b>2005</b>	<b>760</b>	<b>518</b>	<b>111</b>	<b>131</b>	<b>0</b>
<b>2004</b>	<b>417</b>	<b>270</b>	<b>103</b>	<b>44</b>	<b>0</b>
<b>2003</b>	<b>523</b>	<b>292</b>	<b>175</b>	<b>54</b>	<b>2</b>
<b>2002</b>	<b>873</b>	<b>400</b>	<b>389</b>	<b>81</b>	<b>3</b>
<b>2001</b>	<b>758</b>	<b>479</b>	<b>152</b>	<b>127</b>	<b>0</b>
<b>2000</b>	<b>677</b>	<b>416</b>	<b>153</b>	<b>108</b>	<b>0</b>
<b>* Chapters 9, 12 and 15</b>					

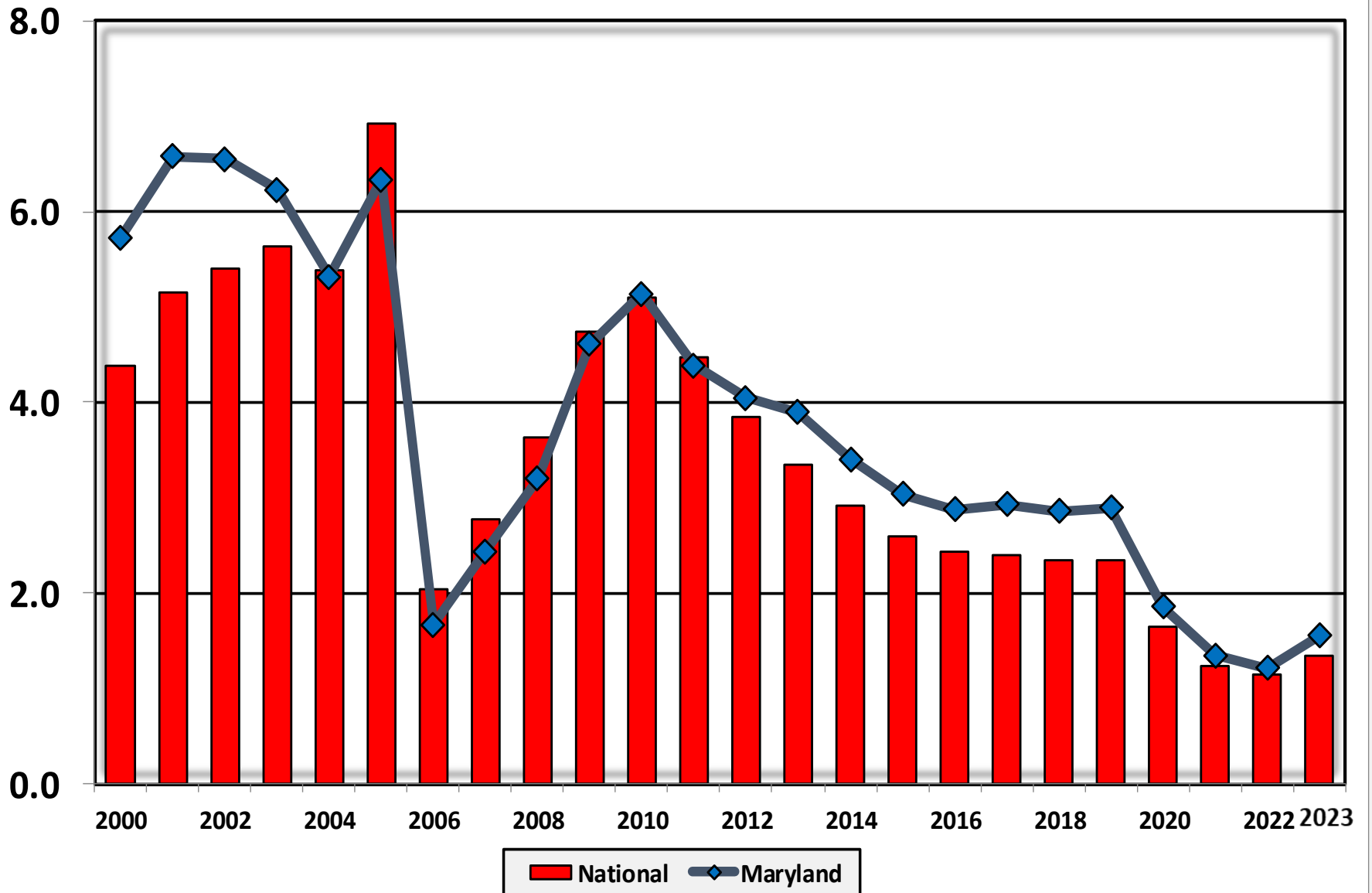
# Total Bankruptcy Cases Filed in Maryland

## Calendar Years 2000 - 2023

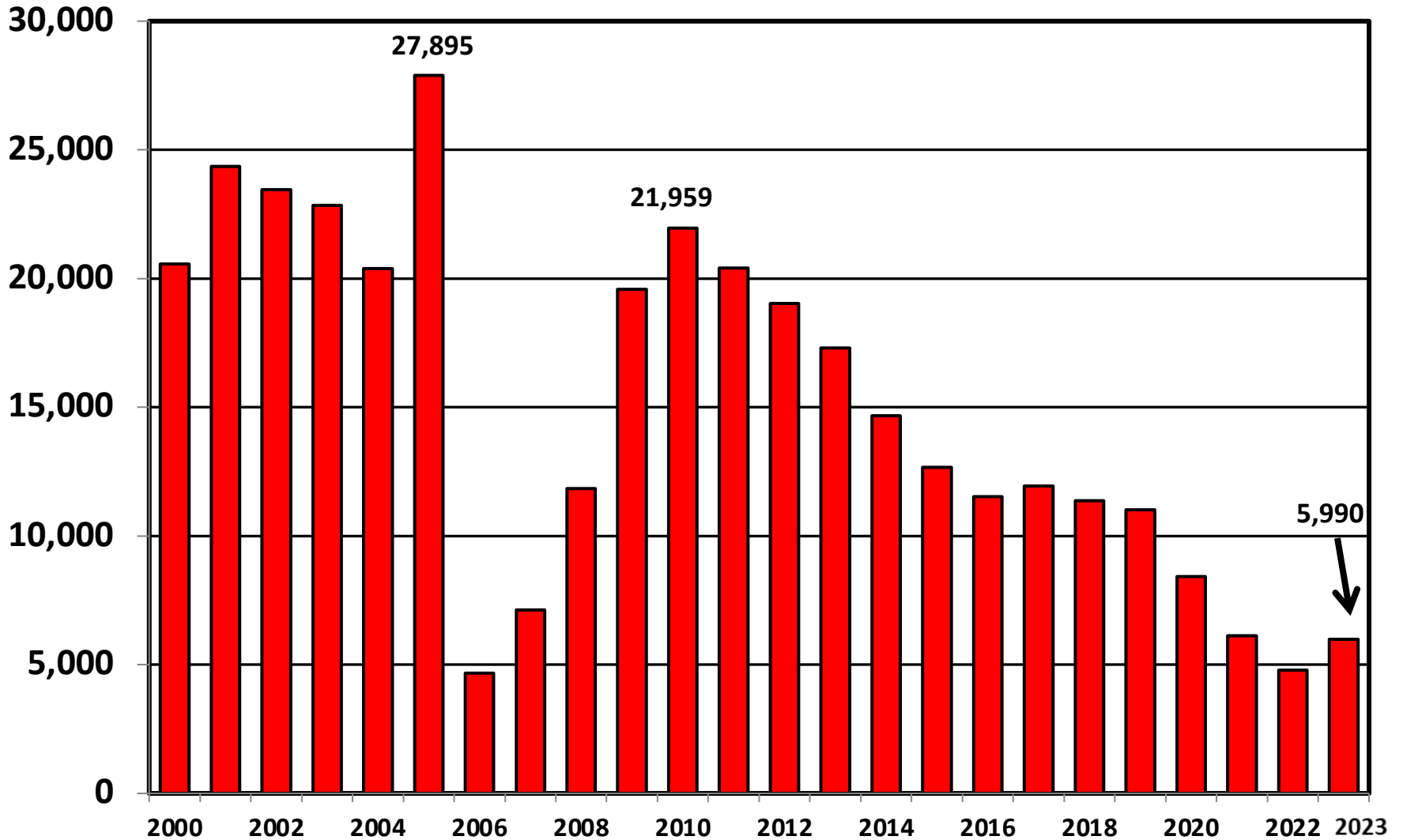




# Bankruptcy Filings per 1,000 Population Maryland vs. National Average 2000 - 2023

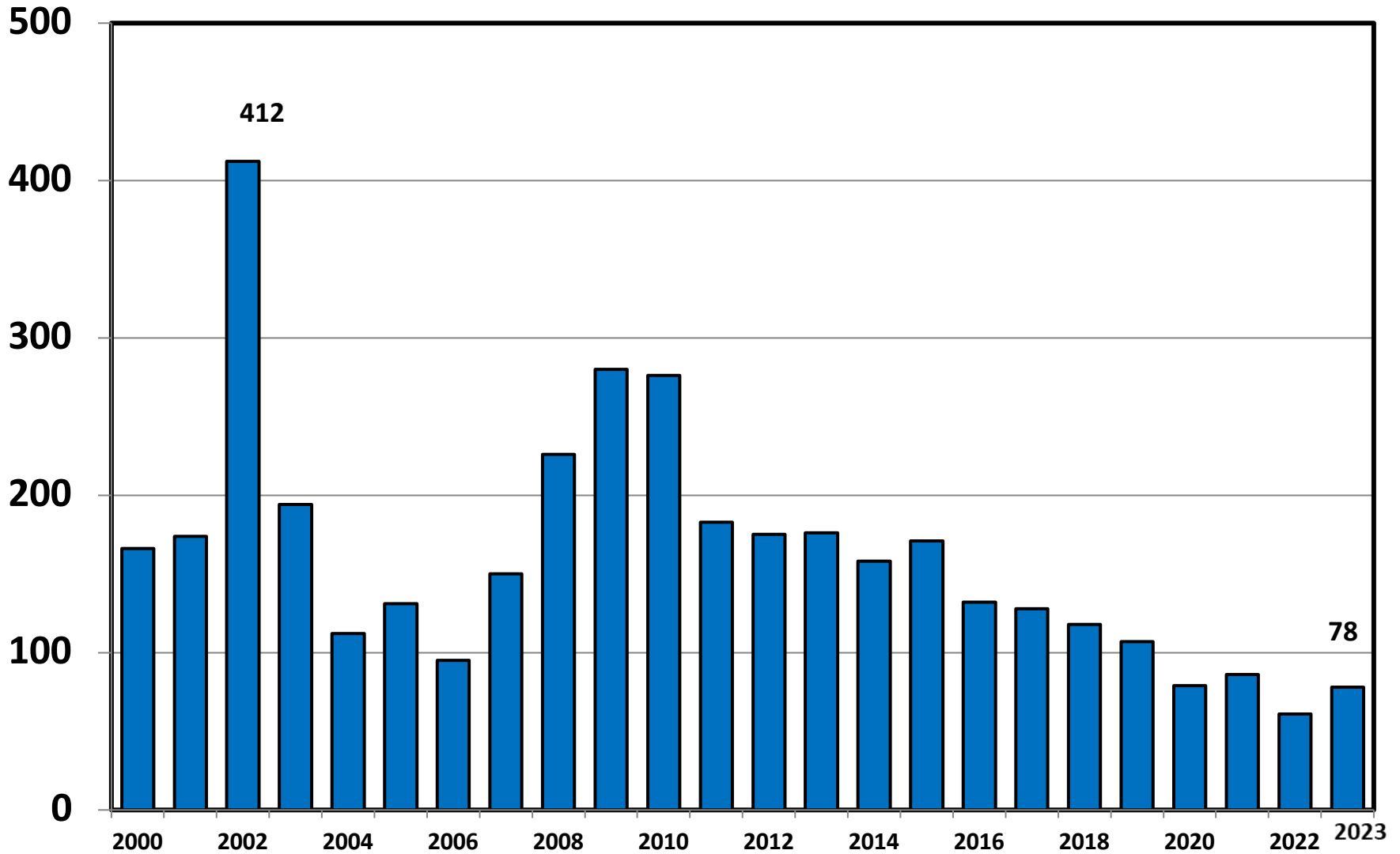


# Chapter 7 Cases Filed In Maryland Calendar Years 2000 - 2023

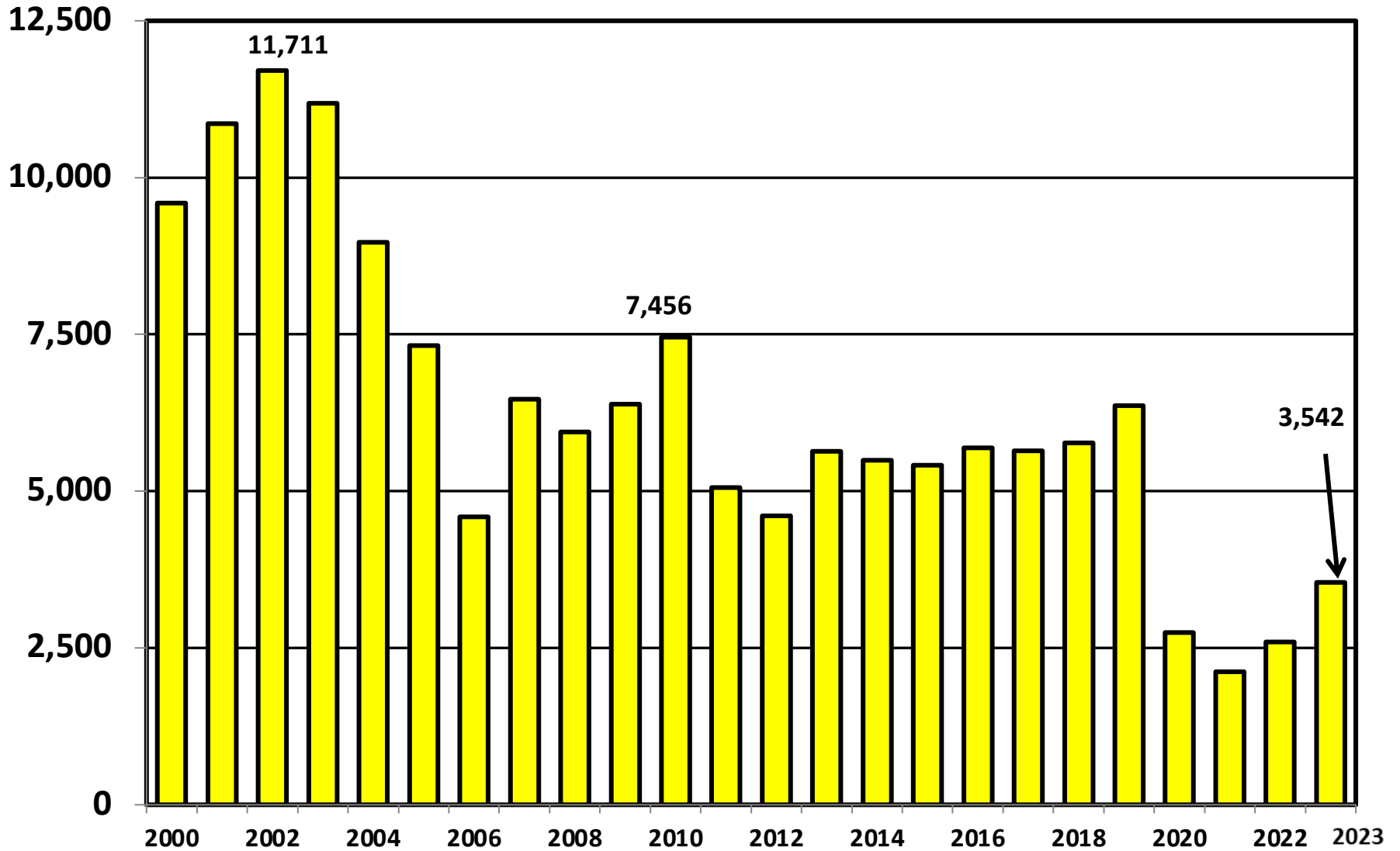




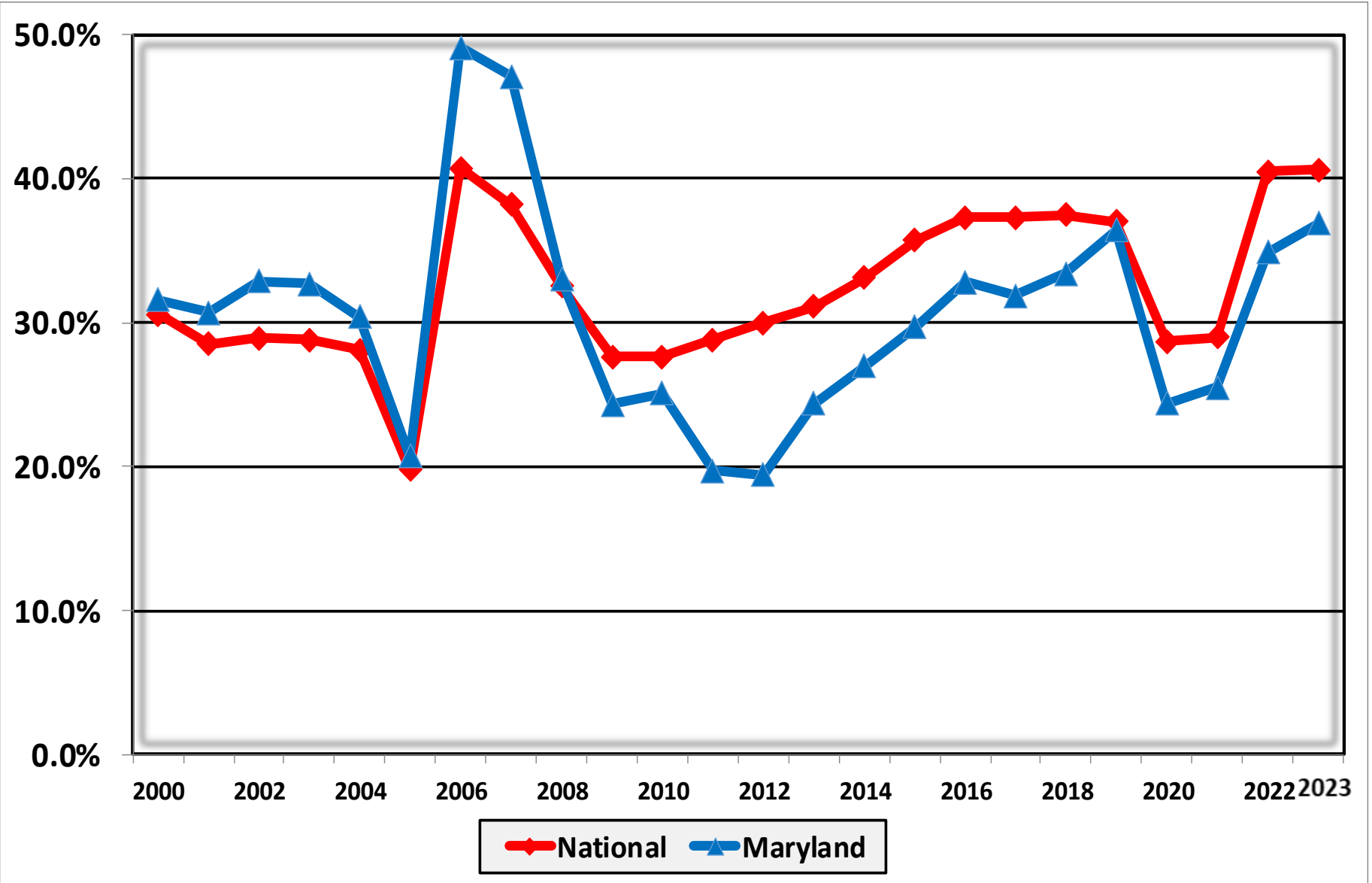
# Chapter 11 Cases Filed in Maryland 2000 - 2023



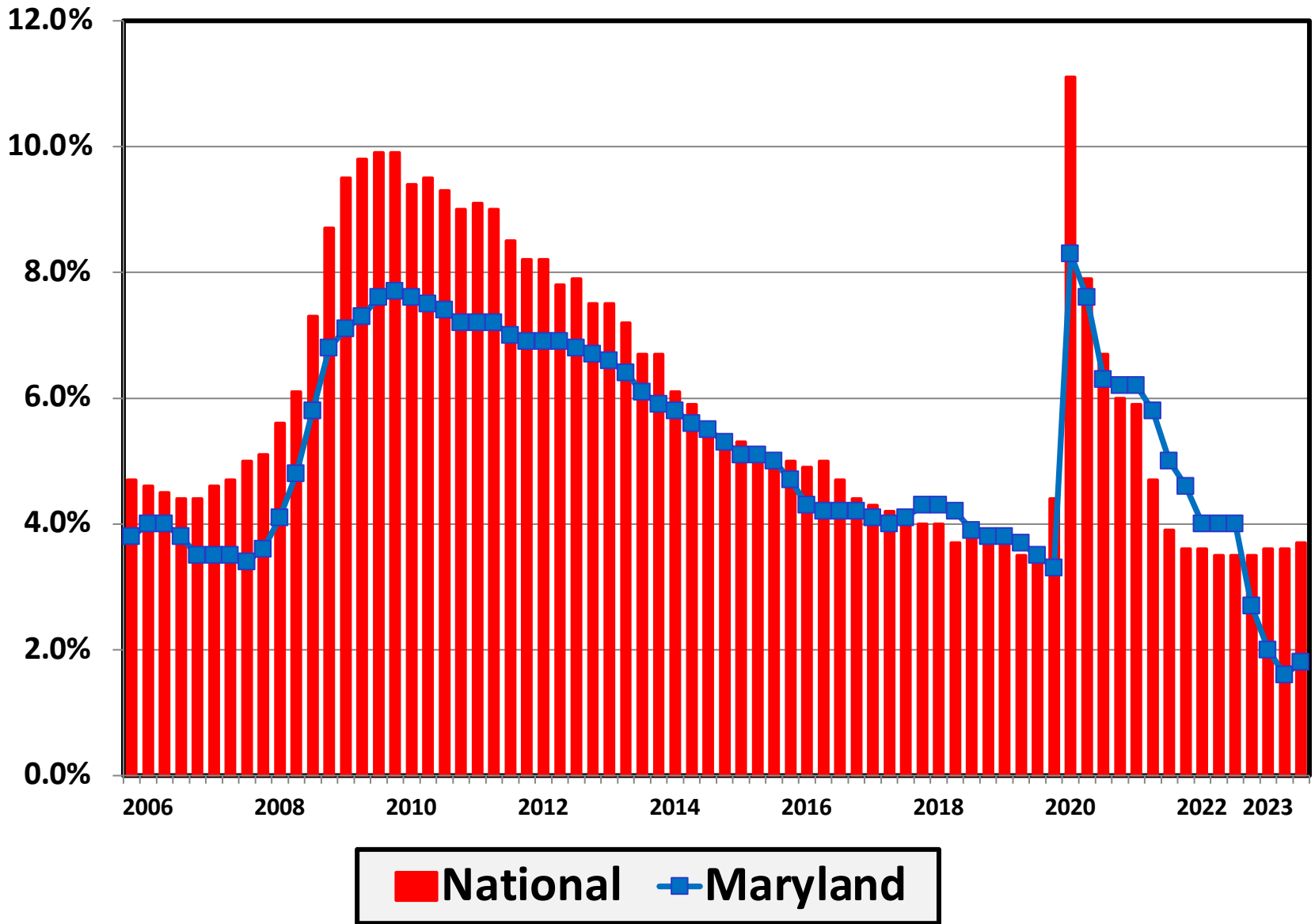
# Chapter 13 Cases Filed in Maryland 2000 - 2023



**Percent of Cases Filed as Chapter 13  
Calendar Years 2000 - 2023**

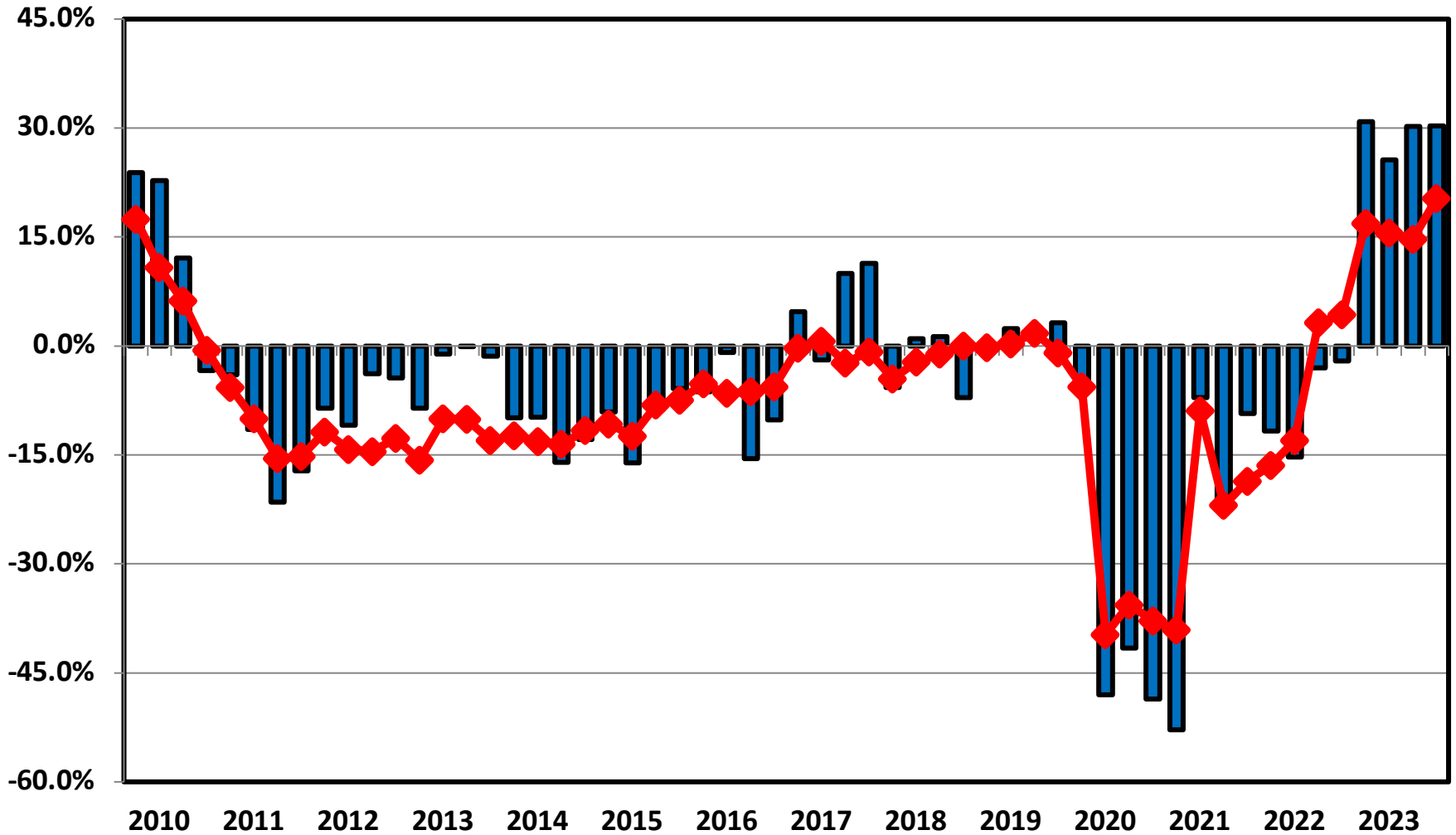


# Unemployment Rate By Quarter 2006 - 2023



Source: Bureau of Labor Statistics

# Filing Trends By Quarter Maryland vs. National Average (Percent Change From Same Quarter One Year Prior)

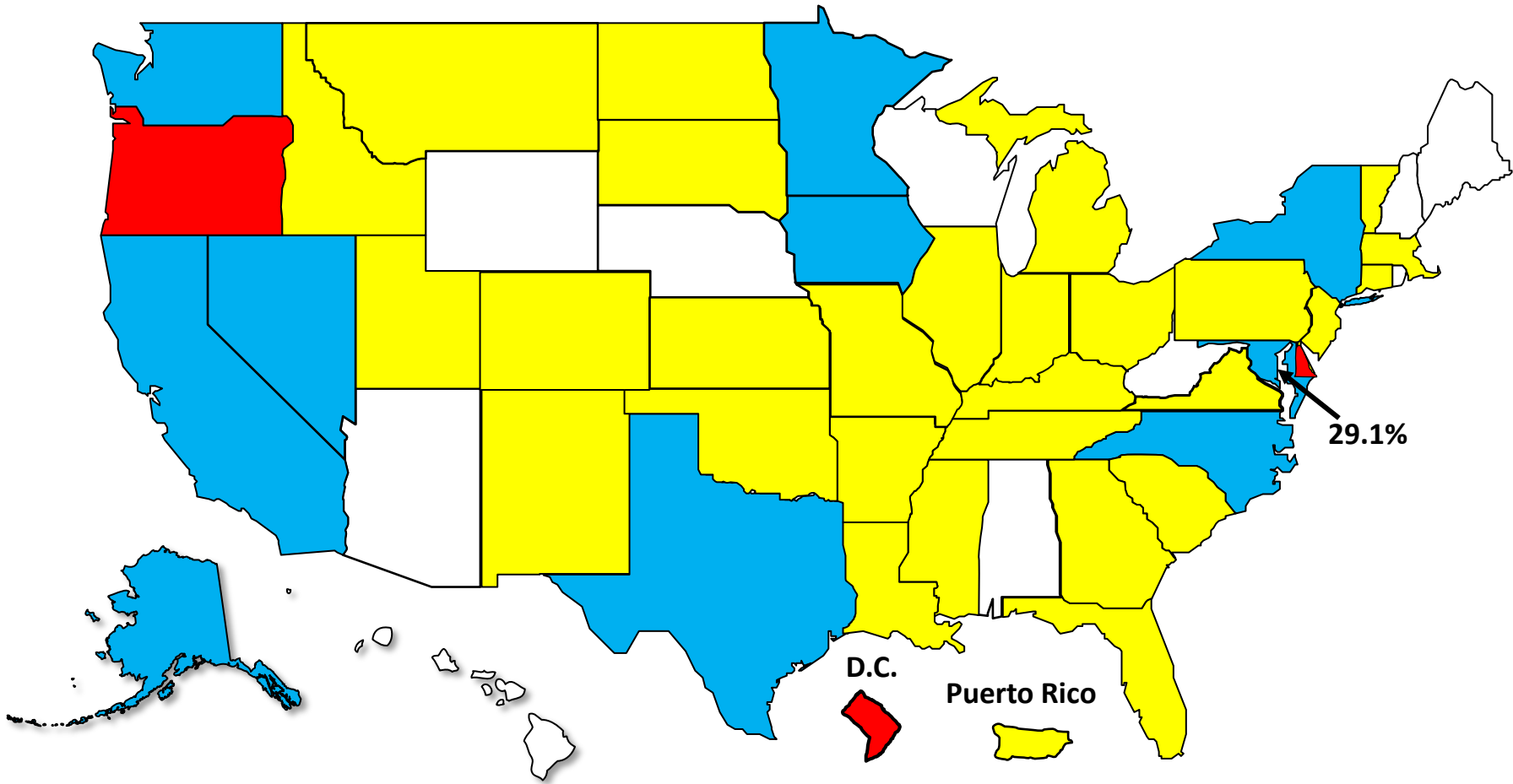


■ Maryland ◆ National

# Bankruptcy Filing Trends

## Calendar Year 2023 vs. 2022

National Average = 16.8% Increase



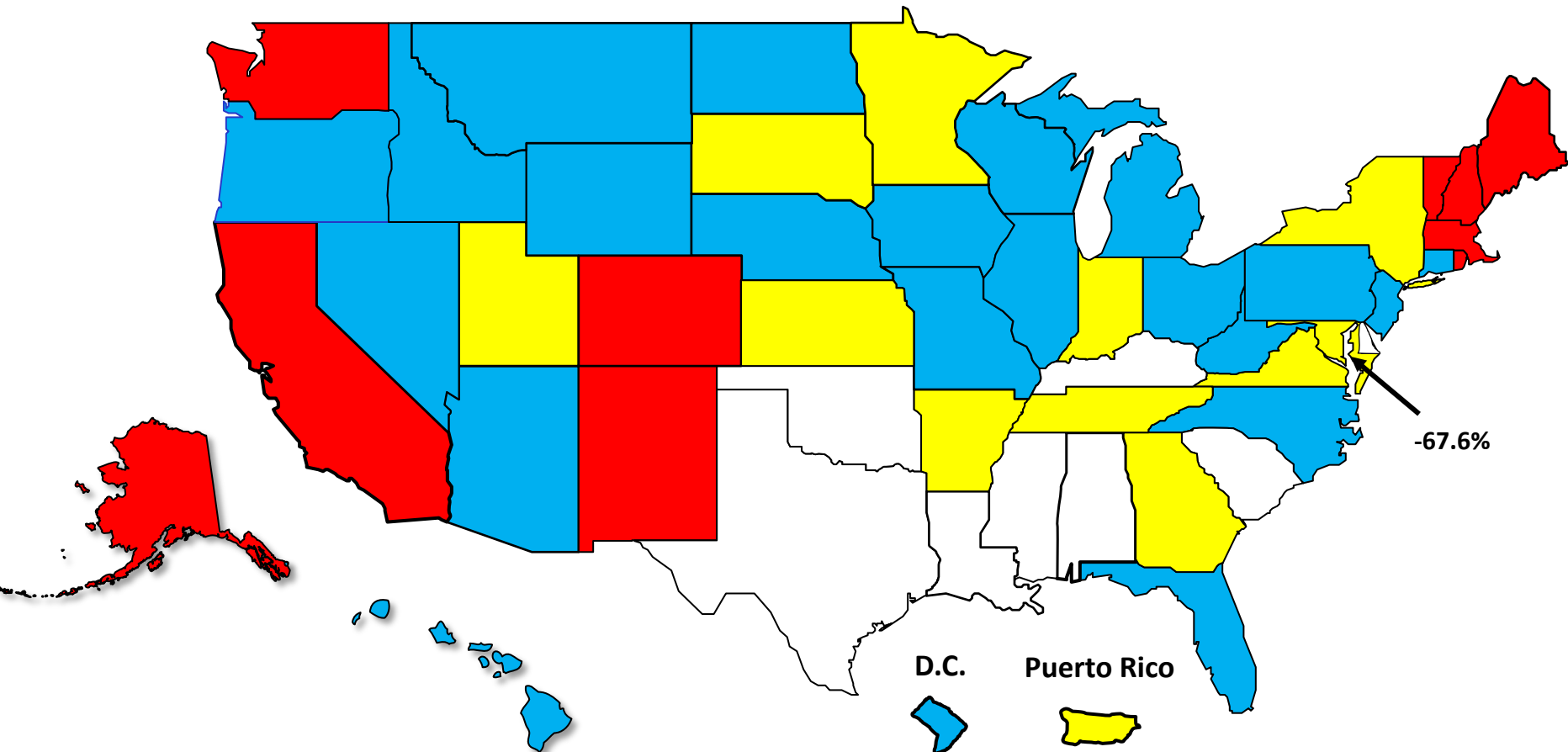


# Percent Change in Total Filings

Calendar Year 2023 Compared to 2010 (Great Recession)

(National Average = 71.6% Decrease)

## Amount of Decrease







AMERICAN  
BANKRUPTCY  
INSTITUTE

[www.abi.org](http://www.abi.org)