

# CUSTOM SUBLIMATION HOCKEY PATTERNS

## ZH100 SERIES

### STANDARD FEATURES

- SELF FABRIC V-NECK
- DOUBLE SHOULDERS
- HEMMED SLEEVES

### SIZES

ADULT: S - 2XL + OVERSIZE  
YOUTH: S - XL

AVAILABLE IN GOALIE CUT

• **DOUBLE SHOULDERS**  
NOT AVAILABLE



## ZH200 SERIES

### STANDARD FEATURES

- SELF FABRIC V-NECK
- DOUBLE SHOULDERS
- HEMMED SLEEVES
- ARM & SIDE INSERTS

### SIZES

ADULT: S - 2XL + OVERSIZE  
YOUTH: S - XL

AVAILABLE IN GOALIE CUT

• **DOUBLE SHOULDERS**  
NOT AVAILABLE



## ZH300 SERIES

### STANDARD FEATURES

- SELF FABRIC V-NECK
- DOUBLE SHOULDERS
- HEMMED SLEEVES
- ARM & SIDE INSERTS

### SIZES

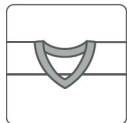
ADULT: S - 2XL + OVERSIZE  
YOUTH: S - XL

AVAILABLE IN GOALIE CUT

• **DOUBLE SHOULDERS**  
NOT AVAILABLE



## STANDARD



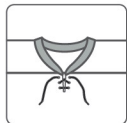
#0  
V-NECK

## OPTIONAL NECK STYLES

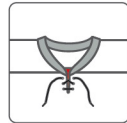
AVAILABLE ON ALL PATTERNS ABOVE



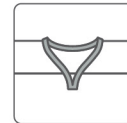
#1  
TAPER NECK  
WITH UNDERLAY



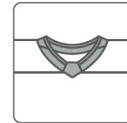
#2  
LACE NECK



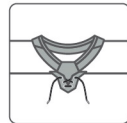
#3  
LACE NECK  
WITH UNDERLAY



#4  
KEYHOLE NECK



#8  
EDGE NECK



#9  
EDGE NECK  
WITH LACE

## SUBLIMATED REVERSIBLE HOCKEY JERSEYS

### ZHR100 SERIES

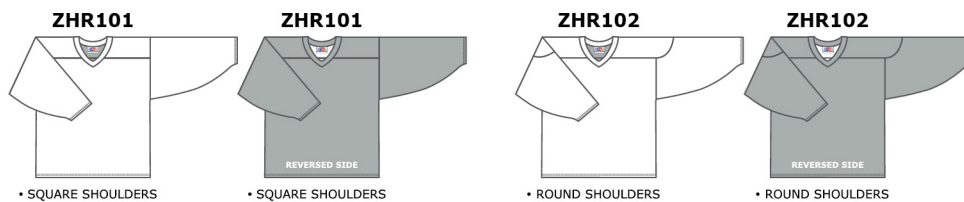
#### STANDARD FEATURES

- SELF FABRIC V-NECK
- HEMMED SLEEVES

#### SIZES

ADULT: S - 2XL + OVERSIZE  
YOUTH: S - XL

AVAILABLE IN GOALIE CUT



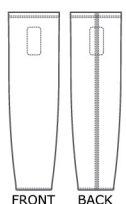
## ZH700 SERIES

### HOCKEY SOCKS

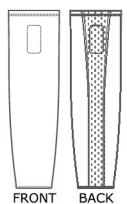
#### STANDARD FEATURES

- VELCRO TABS
- ELASTIC BOTTOM

|               | STANDARD SIZE | CUSTOM SIZE |
|---------------|---------------|-------------|
| YOUTH         | 21            | 18          |
| INTERMEDIATE  | 25            | 23          |
| ADULT         | 30 & 32       | 28          |
| ADULT WIDE XL | 30            |             |



**ZH701**  
• SPANDEX SOCKS



**ZH711**  
• FABRIC SOCKS



**ZH702**  
• SPANDEX SOCKS  
• DURASTAR MESH BACK INSERT

**ZH712**  
• FABRIC SOCKS  
• DURASTAR MESH BACK INSERT

### PATTERN CODE BREAKDOWN



- **ZH121** – SUBLIMATION
- **ZH121** – SPORT
- **ZH121** – SERIES
- **ZH121** – NECK
- **ZH121** – SHOULDER

# CUSTOM SUBLIMATION HOCKEY PATTERNS

## ZH900 SERIES PANT SHELLS

OPTION AVAILABLE

### ZH901

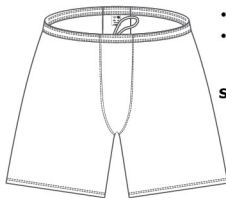


- DURASHELL - 100% POLYESTER
- KNITTED STRETCH INSERTS
- BELTED WAIST

#### SIZES

ADULT: S - 2XL + OVERSIZE  
YOUTH: S - XL

### ZH911



- PROSTAR - 100% POLYESTER
- DRAWSTRING WAIST

#### SIZES

ADULT: S - 2XL + OVERSIZE  
YOUTH: S - XL

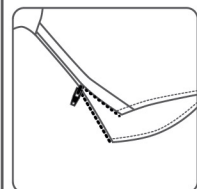
### ZH912



- PROSTAR - 100% POLYESTER
- BELTED WAIST

#### SIZES

ADULT: S - 2XL + OVERSIZE  
YOUTH: S - XL



**ZIPPERS**

# CUSTOM SUBLIMATION APPAREL PATTERNS

## ZAL1000 SERIES

### SWEATSHIRT

- SELF FABRIC CREW NECK

#### SIZES

- ADULT: XS - 2XL + OVERSIZE
- YOUTH: S - XL
- LADIES: XS - 2XL + OVERSIZE



• HEMMED SLEEVES & WAIST



• RIB KNIT CUFFS & WAIST



• HEMMED SLEEVES & WAIST



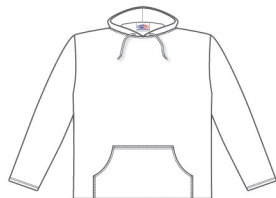
• RIB KNIT CUFFS & WAIST

## ZAL2000 SERIES

### HOODIE

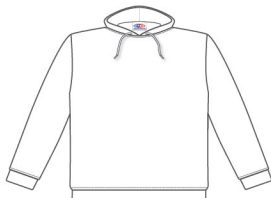
- HOOD WITH DRAWSTRING (NO DRAWSTRING ON YOUTH SIZES)

ZAL2010P\*



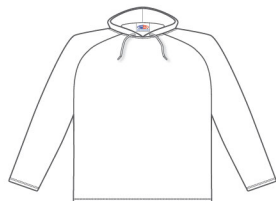
• HEMMED SLEEVES & WAIST  
\* SHOWN WITH OPTIONAL FRONT POCKET

ZAL2011



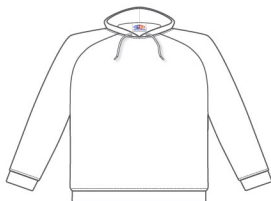
• RIB KNIT CUFFS & WAIST

ZAL2020



• HEMMED SLEEVES & WAIST

ZAL2021



• RIB KNIT CUFFS & WAIST

#### SIZES

- ADULT: XS - 2XL + OVERSIZE
- YOUTH: S - XL
- LADIES: XS - 2XL + OVERSIZE

### 1/4 ZIP SWEATSHIRT

- SELF FABRIC COLLAR
- 1/4 ZIPPER

ZAL2610



• HEMMED SLEEVES & WAIST

ZAL2611



• RIB KNIT CUFFS & WAIST

ZAL2620



• HEMMED SLEEVES & WAIST

ZAL2621



• RIB KNIT CUFFS & WAIST

## ZA2000 SERIES

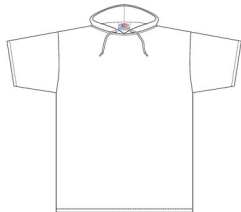
### SHORT SLEEVE HOODIE

- HOOD WITH DRAWSTRING (NO DRAWSTRING ON YOUTH SIZES)

#### SIZES

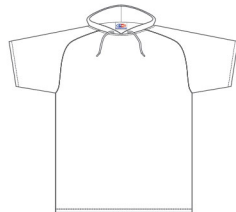
- ADULT: XS - 2XL + OVERSIZE
- YOUTH: S - XL
- LADIES: XS - 2XL + OVERSIZE

ZA2010



• HEMMED SLEEVES & WAIST

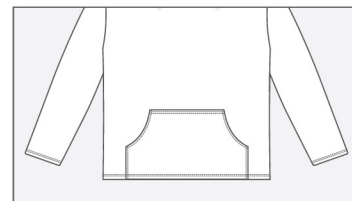
ZA2020



• HEMMED SLEEVES & WAIST

## OPTION AVAILABLE

ZAL2010P



FRONT POCKET  
FOR OPTIONAL POCKET ADD "P" TO END OF PATTERN CODE

## ZAL2000 SERIES

### FULL ZIP SWEATSHIRT

- SELF FABRIC COLLAR
- FULL ZIPPER

#### SIZES

- ADULT: XS - 2XL + OVERSIZE
- YOUTH: S - XL
- LADIES: XS - 2XL + OVERSIZE

ZAL2710



• HEMMED SLEEVES & WAIST

ZAL2711



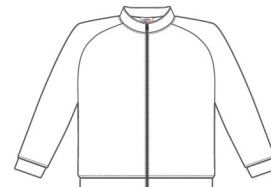
• RIB KNIT CUFFS & WAIST

ZAL2720



• HEMMED SLEEVES & WAIST

ZAL2721



• RIB KNIT CUFFS & WAIST

# CUSTOM SUBLIMATION APPAREL PATTERNS

## ZAL3000 SERIES

### LACE NECK HOODIE

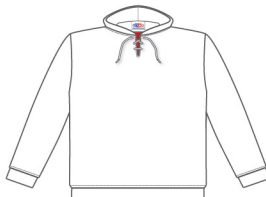
- LACE NECK HOOD WITH UNDERLAY (YOUTH LACE TACKED DOWN)

ZAL3310



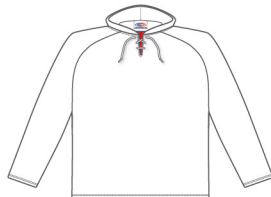
- HEMMED SLEEVES & WAIST

ZAL3311



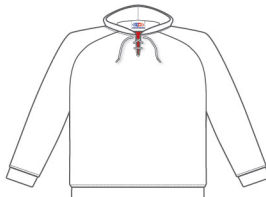
- RIB KNIT CUFFS & WAIST

ZAL3320



- HEMMED SLEEVES & WAIST

ZAL3321



- RIB KNIT CUFFS & WAIST

#### SIZES

- ADULT: XS - 2XL + OVERSIZE
- YOUTH: S - XL
- LADIES: XS - 2XL + OVERSIZE

### FULL ZIP HOODIE

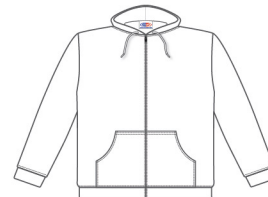
- HOOD WITH DRAWSTRING (NO DRAWSTRING ON YOUTH SIZES)
- FULL ZIPPER

ZAL3710



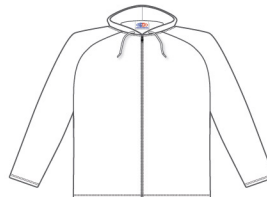
- HEMMED SLEEVES & WAIST

ZAL3711P\*



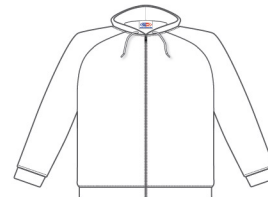
- RIB KNIT CUFFS & WAIST
- \* SHOWN WITH OPTIONAL FRONT POCKETS

ZAL3720



- HEMMED SLEEVES & WAIST

ZAL3721



- RIB KNIT CUFFS & WAIST

## ZAT5000 SERIES

### FULL ZIP JACKET

- SELF FABRIC COLLAR
- FULL ZIPPER
- ZIPPERED POCKETS

ZAT5710



- HEMMED SLEEVES & WAIST WITH BUILT IN SEMI ELASTIC
- STANDARD WITH ZIPPERED POCKETS

ZAT5720



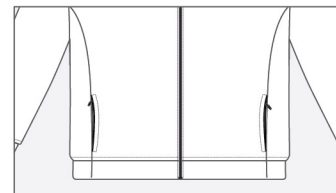
- HEMMED SLEEVES & WAIST WITH BUILT IN SEMI ELASTIC
- STANDARD WITH ZIPPERED POCKETS

#### SIZES

- ADULT: XS - 2XL + OVERSIZE
- YOUTH: S - XL
- LADIES: XS - 2XL + OVERSIZE

## OPTION AVAILABLE

ZAL4711Z



### POCKET ZIPPERS

FOR OPTIONAL POCKET ZIPPERS  
ADD "Z" TO END OF PATTERN CODE

\* ONLY AVAILABLE ON ZAL4000 SERIES PRODUCTS



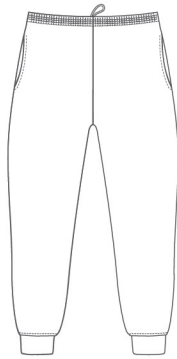
# CUSTOM SUBLIMATION APPAREL PATTERNS

## ZAP9000 SERIES

### JOGGER PANTS

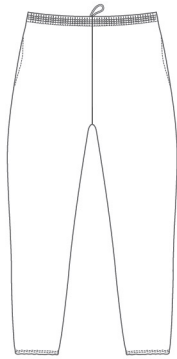
- ELASTIC WAISTBAND WITH DRAWSTRING
- SIDE POCKETS
- TAPERED FIT

ZAP9300P



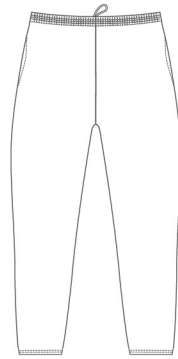
• RIB KNIT CUFFS

ZAP9400P



• ELASTIC BOTTOMS

ZAP9500P



• HEMMED BOTTOMS

### SIZES

- ADULT: XS - 2XL + OVERSIZE
- YOUTH: S - XL
- LADIES: XS - 2XL + OVERSIZE

## SUBLIMATED TOQUE

- DOUBLE LAYER

ZAA101



### SIZES

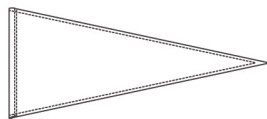
- ADULT
- YOUTH

## SUBLIMATED PENNANT

### DIMENSIONS

ZAA409  
9"H x 24"W

ZAA412  
12"H x 30"W



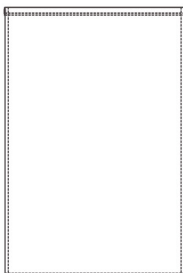
## SUBLIMATED BANNER

### DIMENSIONS

ZAA318  
18"H x 12"W

ZAA324  
24"H x 18"W

ZAA336  
36"H x 24"W



## SUBLIMATED SCARF

- DOUBLE LAYER

ZAA102



DIMENSIONS  
70"L x 7"W

## SUBLIMATED GARMENT BAG

ZAA501

- CARRY LOOP
- FULL FRONT ZIPPER

DIMENSIONS  
38"H x 24"W



# CUSTOM SUBLIMATION APPAREL PATTERNS

## ZA10 SERIES

### STANDARD FEATURES

- SELF FABRIC V-NECK
- HEMMED SLEEVES

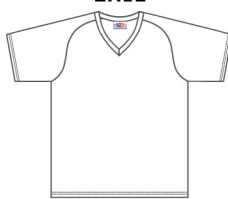
### SIZES

ADULT: XS - 2XL  
+ OVERSIZE  
YOUTH: S - XL  
LADIES: XS - 2XL  
+ OVERSIZE



• SET IN SLEEVES

ZA12



• SADDLE SLEEVES

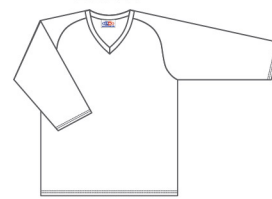
## ZAL10 SERIES

ZAL11



• SET IN SLEEVES

ZAL12



• SADDLE SLEEVES

## NECK STYLES



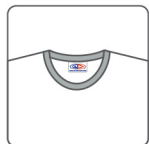
V-NECK

### ZA10 SERIES

- SHORT SLEEVES

### ZAL10 SERIES

- LONG SLEEVES



CREW NECK

### ZA20 SERIES

- SHORT SLEEVES

### ZAL20 SERIES

- LONG SLEEVES

## ZA40 SERIES

### STANDARD FEATURES

- SELF FABRIC 3 BUTTON POLO
- HEMMED SLEEVES

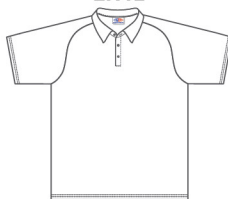
### SIZES

ADULT: XS - 2XL  
+ OVERSIZE  
YOUTH: S - XL  
LADIES: XS - 2XL  
+ OVERSIZE



• SET IN SLEEVES

ZA42



• SADDLE SLEEVES

## ZAL40 SERIES

ZAL41



• SET IN SLEEVES

ZAL42



• SADDLE SLEEVES

## NECK STYLES



3 BUTTON POLO

### ZA40 SERIES

- SHORT SLEEVES

### ZAL40 SERIES

- LONG SLEEVES



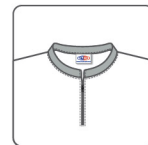
1/4 ZIPPER POLO

### ZA50 SERIES

- SHORT SLEEVES

### ZAL50 SERIES

- LONG SLEEVES



1/4 ZIPPER MANDARIN COLLAR

### ZA60 SERIES

- SHORT SLEEVES

### ZAL60 SERIES

- LONG SLEEVES

## ZAC20 SERIES COMPRESSION FIT

### STANDARD FEATURES

- SELF FABRIC CREW NECK
- HEMMED SLEEVES

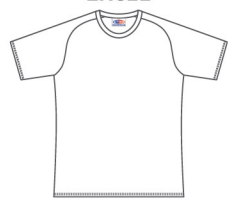
### SIZES

ADULT: XS - 2XL  
+ OVERSIZE  
YOUTH: S - XL



• SET IN SLEEVES

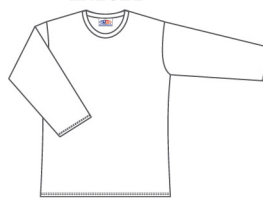
ZAC22



• SADDLE SLEEVES

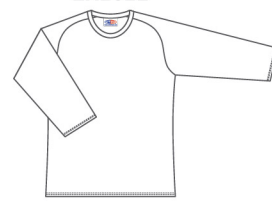
## ZALC20 SERIES COMPRESSION FIT

ZALC21



• SET IN SLEEVES

ZALC22



• SADDLE SLEEVES

## ZAS90 SERIES

### STANDARD FEATURES

- ELASTIC WAISTBAND WITH DRAWSTRING
- 9" INSEAM ADULT
- 7" INSEAM YOUTH
- 5" INSEAM LADIES

### OPTIONS AVAILABLE

- SIDE POCKETS (ZAS91P)

### SIZES

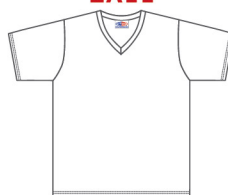
ADULT: XS - 2XL  
+ OVERSIZE  
YOUTH: S - XL  
LADIES: XS - 2XL  
+ OVERSIZE

ZAS91



## PATTERN CODE BREAKDOWN

ZA11



- **ZA11** - SUBLIMATION
- **ZA11** - SPORT
- **ZA11** - NECK
- **ZA11** - SLEEVE STYLE

# CUSTOM SUBLIMATION BASEBALL PATTERNS

## ZBA10 SERIES

### STANDARD FEATURES

- SELF FABRIC V-NECK
- HEMMED SLEEVES

### SIZES

- ADULT: S - 2XL + OVERSIZE
- YOUTH: S - XL
- LADIES: XS - 2XL + OVERSIZE

\*LADIES ONLY



• SET IN SLEEVES



• SADDLE SLEEVES



• RAGLAN SLEEVES



• SLEEVELESS



• SLEEVELESS  
• RACER BACK

## ZBA20 SERIES

### STANDARD FEATURES

- SELF FABRIC CREW NECK
- HEMMED SLEEVES

### SIZES

- ADULT: S - 2XL + OVERSIZE
- YOUTH: S - XL
- LADIES: XS - 2XL + OVERSIZE

\*LADIES ONLY



• SET IN SLEEVES



• SADDLE SLEEVES



• RAGLAN SLEEVES



• SLEEVELESS



• SLEEVELESS  
• RACER BACK

## ZBA30 SERIES

### STANDARD FEATURES

- 2 BUTTON PLACKET
- KNITTED TRIM COLLAR
- HEMMED SLEEVES

### SIZES

- ADULT: S - 2XL + OVERSIZE
- YOUTH: S - XL
- LADIES: XS - 2XL + OVERSIZE

\*LADIES ONLY



• SET IN SLEEVES



• SADDLE SLEEVES



• SADDLE CAP SLEEVES



• SLEEVELESS

## ZBA50 SERIES

### STANDARD FEATURES

- 1 BUTTON PLACKET
- SELF FABRIC COLLAR
- HEMMED SLEEVES

### SIZES

- ADULT: S - 2XL + OVERSIZE
- YOUTH: S - XL
- LADIES: XS - 2XL + OVERSIZE



• SET IN SLEEVES



• SADDLE SLEEVES

## ZBA70 SERIES

### STANDARD FEATURES

- FULL BUTTON FRONT PLACKET
- HEMMED SLEEVES

### SIZES

- ADULT: S - 2XL + OVERSIZE
- YOUTH: S - XL
- LADIES: XS - 2XL + OVERSIZE



• SET IN SLEEVES



• SADDLE SLEEVES



• SLEEVELESS

## ZBA80 SERIES

### STANDARD FEATURES

- FAUX FULL BUTTON FRONT PLACKET
- HEMMED SLEEVES

### SIZES

- ADULT: S - 2XL + OVERSIZE
- YOUTH: S - XL
- LADIES: XS - 2XL + OVERSIZE



• SET IN SLEEVES



• SADDLE SLEEVES

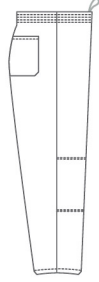
# CUSTOM SUBLIMATION BASEBALL PATTERNS

## ZBAP400 SERIES

### STANDARD FEATURES

- ELASTIC WAISTBAND WITH DRAWSTRING
- RIGHT PATCH POCKET
- DOUBLE KNEES

ZBAP421



• ELASTIC BOTTOM

### SIZES

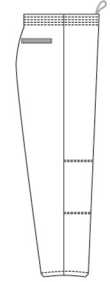
ADULT: S - 2XL  
+ OVERSIZE  
YOUTH: S - XL

## ZBAP500 SERIES

### STANDARD FEATURES

- ELASTIC WAISTBAND WITH DRAWSTRING
- RIGHT WELTED POCKET
- DOUBLE KNEES

ZBAP522



• ELASTIC BOTTOM

### SIZES

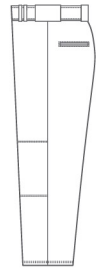
ADULT: S - 2XL  
+ OVERSIZE  
YOUTH: S - XL

## ZBAP60 SERIES

### STANDARD FEATURES

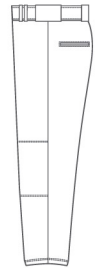
- PRO WAISTBAND
- TUNNEL BELT LOOPS
- WELTED BACK POCKETS
- DUAL BRASS SNAPS
- BRASS ZIPPER FLY FRONT
- DOUBLE KNEES

ZBAP61



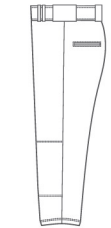
• HEMMED BOTTOM

ZBAP62



• ELASTIC BOTTOM

\* ZBAP65L



• ELASTIC BOTTOM

ZBAP63



KNICKER PANTS  
• ELASTIC BOTTOM

### SIZES

ADULT: S - 2XL  
+ OVERSIZE  
YOUTH: S - XL

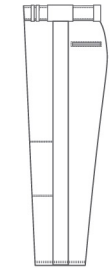
\* LADIES ONLY: XS - 2XL  
+ OVERSIZE

## ZBAP600 SERIES

### STANDARD FEATURES

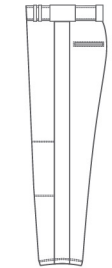
- PRO WAISTBAND
- TUNNEL BELT LOOPS
- WELTED BACK POCKETS
- DUAL BRASS SNAPS
- BRASS ZIPPER FLY FRONT
- DOUBLE KNEES
- SIDE INSERTS

ZBAP610



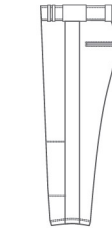
• HEMMED BOTTOM

ZBAP620



• ELASTIC BOTTOM

\* ZBAP650L



• ELASTIC BOTTOM

### SIZES

ADULT: S - 2XL  
+ OVERSIZE  
YOUTH: S - XL

\* LADIES ONLY: XS - 2XL  
+ OVERSIZE

## ZBAS40 SERIES

### STANDARD FEATURES

- PRO WAISTBAND
- TUNNEL BELT LOOPS
- WELTED BACK POCKET
- DUAL BRASS SNAPS
- BRASS ZIPPER FLY FRONT

\* ZBAS41



### \* OPTIONS SHOWN

- SIDE POCKETS (ZBAS41P)

### SIZES

ADULT: S - 2XL  
+ OVERSIZE  
YOUTH: S - XL

## ZBAS400 SERIES

### STANDARD FEATURES

- PRO WAISTBAND
- TUNNEL BELT LOOPS
- WELTED BACK POCKET
- DUAL BRASS SNAPS
- BRASS ZIPPER FLY FRONT
- SIDE INSERTS

ZBAS410



### SIZES

ADULT: S - 2XL  
+ OVERSIZE  
YOUTH: S - XL

## ZBA900 SERIES

### STANDARD FEATURES

- ELASTIC WAISTBAND WITH DRAWSTRING
- 9" INSEAM ADULT
- 7" INSEAM YOUTH
- 5" INSEAM LADIES

ZBA901



### OPTIONS AVAILABLE

- SIDE POCKETS (ZBA901P)

### SIZES

ADULT: S - 2XL  
+ OVERSIZE  
YOUTH: S - XL  
LADIES: XS - 2XL  
+ OVERSIZE

# CUSTOM SUBLIMATION BASKETBALL PATTERNS

## ZB10 SERIES

### STANDARD FEATURES

- SELF FABRIC CREW NECK
- HEMMED ARMHOLES

### SIZES

MENS: S - 2XL  
+ OVERSIZE  
YOUTH: S - XL  
LADIES: XS - 2XL  
+ OVERSIZE



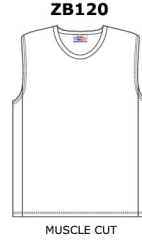
## ZB100 SERIES

### STANDARD FEATURES

- SELF FABRIC CREW NECK
- HEMMED ARMHOLES
- SIDE INSERTS

### SIZES

MENS: S - 2XL  
+ OVERSIZE  
YOUTH: S - XL  
LADIES: XS - 2XL  
+ OVERSIZE



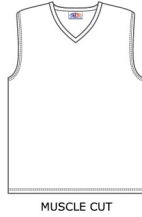
## ZB20 SERIES

### STANDARD FEATURES

- SELF FABRIC V-NECK
- HEMMED ARMHOLES

### SIZES

MENS: S - 2XL  
+ OVERSIZE  
YOUTH: S - XL  
LADIES: XS - 2XL  
+ OVERSIZE



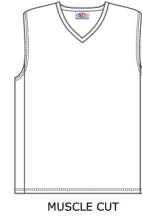
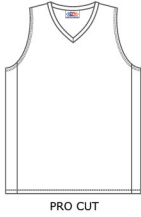
## ZB200 SERIES

### STANDARD FEATURES

- SELF FABRIC V-NECK
- HEMMED ARMHOLES
- SIDE INSERTS

### SIZES

MENS: S - 2XL  
+ OVERSIZE  
YOUTH: S - XL  
LADIES: XS - 2XL  
+ OVERSIZE



## ZB30 SERIES

### STANDARD FEATURES

- KNITTED RAP NECK
- HEMMED ARMHOLES

### SIZES

MENS: S - 2XL  
+ OVERSIZE  
YOUTH: S - XL  
LADIES: XS - 2XL  
+ OVERSIZE



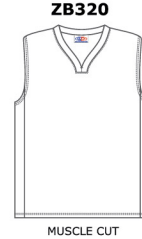
## ZB300 SERIES

### STANDARD FEATURES

- KNITTED RAP NECK
- HEMMED ARMHOLES
- SIDE INSERTS

### SIZES

MENS: S - 2XL  
+ OVERSIZE  
YOUTH: S - XL  
LADIES: XS - 2XL  
+ OVERSIZE



## SUBLIMATED REVERSIBLE BASKETBALL JERSEYS

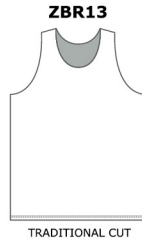
## ZBR10 SERIES

### STANDARD FEATURES

- CREW NECK

### SIZES

MENS: S - 2XL  
+ OVERSIZE  
YOUTH: S - XL  
LADIES: XS - 2XL  
+ OVERSIZE





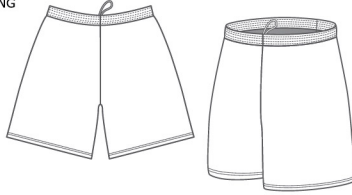
# CUSTOM SUBLIMATION BASKETBALL PATTERNS

## ZBS90 SERIES

### STANDARD FEATURES

- ELASTIC WAIST WITH DRAWSTRING
- 9" INSEAM MENS
- 7" INSEAM YOUTH
- 7" INSEAM LADIES

### ZBS91



### SIZES

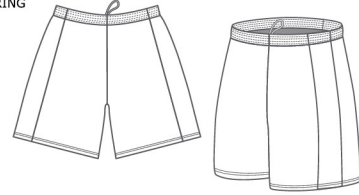
MENS: S - 2XL  
+ OVERSIZE  
YOUTH: S - XL  
LADIES: XS - 2XL  
+ OVERSIZE

## ZBS900 SERIES

### STANDARD FEATURES

- ELASTIC WAIST WITH DRAWSTRING
- SIDE INSERTS
- 9" INSEAM MENS
- 7" INSEAM YOUTH
- 7" INSEAM LADIES

### ZBS914



### SIZES

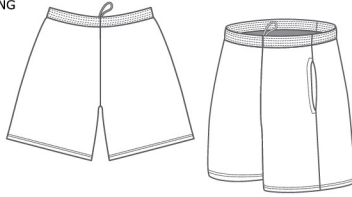
MENS: S - 2XL  
+ OVERSIZE  
YOUTH: S - XL  
LADIES: XS - 2XL  
+ OVERSIZE

## ZBS90P SERIES WITH SIDE POCKETS

### STANDARD FEATURES

- ELASTIC WAIST WITH DRAWSTRING
- SIDE POCKETS
- 9" INSEAM MENS
- 7" INSEAM YOUTH
- 7" INSEAM LADIES

### ZBS91P



### SIZES

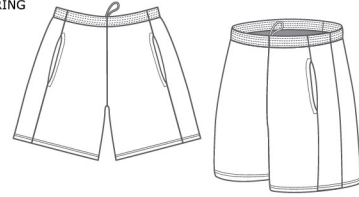
MENS: S - 2XL  
+ OVERSIZE  
YOUTH: S - XL  
LADIES: XS - 2XL  
+ OVERSIZE

## ZBS900P SERIES WITH SIDE POCKETS

### STANDARD FEATURES

- ELASTIC WAIST WITH DRAWSTRING
- SIDE INSERTS
- SIDE POCKETS
- 9" INSEAM MENS
- 7" INSEAM YOUTH
- 7" INSEAM LADIES

### ZBS914P



### SIZES

MENS: S - 2XL  
+ OVERSIZE  
YOUTH: S - XL  
LADIES: XS - 2XL  
+ OVERSIZE

## SUBLIMATED WARMUP SHIRTS

## ZBW10 SERIES

### STANDARD FEATURES

- SELF FABRIC V-NECK
- HEMMED SLEEVES

### ZBW11



- SET IN SLEEVES

### ZBW12



- SADDLE SLEEVES

### SIZES

ADULT: S - 2XL  
+ OVERSIZE  
YOUTH: S - XL  
LADIES: XS - 2XL  
+ OVERSIZE

## ZBWL10 SERIES

### ZBWL11



- SET IN SLEEVES

### ZBWL12



- SADDLE SLEEVES

## NECK STYLES



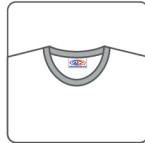
V-NECK

### ZBW10 SERIES

- SHORT SLEEVES

### ZBWL10 SERIES

- LONG SLEEVES



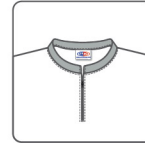
CREW NECK

### ZBW20 SERIES

- SHORT SLEEVES

### ZBWL20 SERIES

- LONG SLEEVES



1/4 ZIP MANDARIN COLLAR

### ZBW60 SERIES

- SHORT SLEEVES

### ZBWL60 SERIES

- LONG SLEEVES

## SUBLIMATED WARMUP PANTS

## ZBP10 SERIES

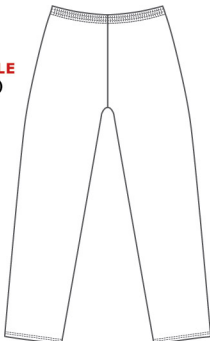
### STANDARD FEATURES

- FULL LENGTH WITH ELASTIC WAIST
- HEMMED BOTTOMS

### \*OPTIONS AVAILABLE

- SIDE POCKETS (ZBP11P)

### ZBP11



### SIZES

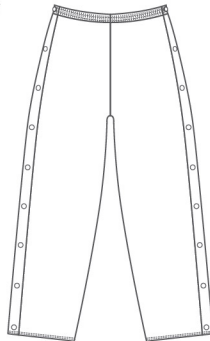
MENS: S - 2XL  
+ OVERSIZE  
YOUTH: S - XL

## ZBP20 SERIES

### STANDARD FEATURES

- FULL LENGTH TEARAWAY WITH ELASTIC WAIST
- HEMMED BOTTOMS

### ZBP21



### SIZES

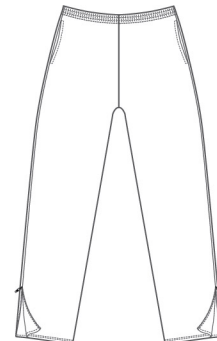
MENS: S - 2XL  
+ OVERSIZE  
YOUTH: S - XL

## ZBP30 SERIES

### STANDARD FEATURES

- FULL LENGTH WITH ELASTIC WAIST
- 1/4 ZIPPERS
- HEMMED BOTTOMS

### \*ZBP31

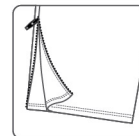


### \*OPTIONS SHOWN

- SIDE POCKETS (ZBP31P)

### SIZES

MENS: S - 2XL  
+ OVERSIZE  
YOUTH: S - XL



# CUSTOM SUBLIMATION FOOTBALL PATTERNS

## ZF100 SERIES

### STANDARD FEATURES

- HEMMED QUARTER SLEEVES
- SIDE SLITS
- GUSSETS
- SELF FABRIC NECK
- DOUBLE SHOULDERS
- COVERSEAM (on shoulders & arm openings)

### SIZES

ADULT: S - 2XL + OVERSIZE  
YOUTH: S - XL

ZF101



- SQUARE SHOULDERS
- CROSSOVER V-NECK

ZF102



- ROUND SHOULDERS
- CROSSOVER V-NECK

ZF103



- ARCHED SHOULDERS
- DEEP V-NECK

ZF104



- T SHOULDERS
- CROSSOVER V-NECK

## ZF200 SERIES

### STANDARD FEATURES

- HEMMED QUARTER SLEEVES
- SIDE SLITS
- GUSSETS
- SELF FABRIC NECK
- DOUBLE SHOULDERS
- COVERSEAM (on shoulders & arm openings)
- 2 PIECE SPANDEX SIDE INSERTS

### SIZES

ADULT: S - 2XL + OVERSIZE  
YOUTH: S - XL

ZF201



- SQUARE SHOULDERS
- CROSSOVER V-NECK

ZF202



- ROUND SHOULDERS
- CROSSOVER V-NECK

ZF203



- ARCHED SHOULDERS
- DEEP V-NECK

ZF204



- T SHOULDERS
- CROSSOVER V-NECK

## ZF300 SERIES

### STANDARD FEATURES

- HEMMED QUARTER SLEEVES WITH LARGER ARMHOLE OPENING
- SIDE SLITS
- SELF FABRIC NECK
- DOUBLE SHOULDERS
- COVERSEAM (on shoulders & arm openings)
- 1 PIECE SPANDEX SIDE INSERTS

### SIZES

ADULT: S - 2XL + OVERSIZE  
YOUTH: S - XL

ZF301



- SQUARE SHOULDERS
- CROSSOVER V-NECK

ZF302



- ROUND SHOULDERS
- CROSSOVER V-NECK

ZF303



- ARCHED SHOULDERS
- DEEP V-NECK

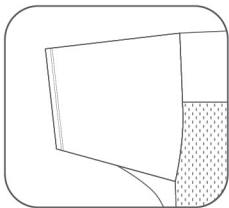
ZF304



- T SHOULDERS
- CROSSOVER V-NECK

## STANDARD

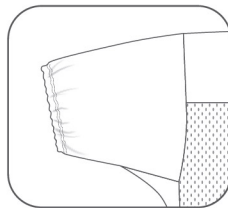
### QUARTER SLEEVE



- HEMMED

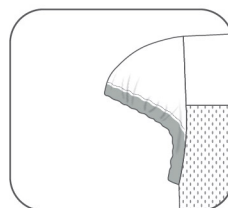
## OPTIONAL SLEEVE STYLES

### MID SLEEVE



- HEMMED WITH ELASTIC SLEEVE ENDS

### CAP SLEEVE



- KNIT TRIM WITH ELASTIC SLEEVE ENDS

## ZF900 SERIES FOOTBALL PANTS

### STANDARD FEATURES

- SPANDEX
- MESH PAD POCKETS
- TUNNEL ELASTIC WAIST WITH LACE FLY
- COVERSEAM

### SIZES

ADULT: S - 2XL + OVERSIZE  
YOUTH: S - XL

ZF901



### STANDARD FEATURES

- SPANDEX
- MESH PAD POCKETS
- TUNNEL ELASTIC WAIST WITH LACE FLY
- COVERSEAM

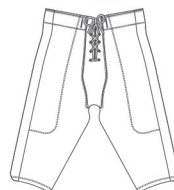
### PLUS

- SPANDEX SIDE INSERTS

### SIZES

ADULT: S - 2XL + OVERSIZE  
YOUTH: S - XL

ZF902



# CUSTOM SUBLIMATION FIELD LACROSSE PATTERNS

## ZLF100 SERIES MEETS NFHS GUIDELINES

### STANDARD FEATURES

- SELF FABRIC V-NECK
- DOUBLE SHOULDERS
- HEMMED SLEEVES

### SIZES

ADULT: S - 2XL + OVERSIZE  
YOUTH: S - XL



## ZLF200 SERIES

### STANDARD FEATURES

- SELF FABRIC V-NECK
- DOUBLE SHOULDERS
- HEMMED SLEEVES
- 4" SIDE INSERTS

### SIZES

ADULT: S - 2XL + OVERSIZE  
YOUTH: S - XL



AVAILABLE AS ZLF201C  
3" SIDE INSERTS  
MEETS NFHS GUIDELINES

## ZLF300 SERIES

### STANDARD FEATURES

- SELF FABRIC V-NECK
- DOUBLE SHOULDERS
- HEMMED SLEEVES
- 4" SIDE INSERTS

### SIZES

ADULT: S - 2XL + OVERSIZE  
YOUTH: S - XL



## ZLF10 LADIES SERIES

### STANDARD FEATURES

- SELF FABRIC V-NECK
- HEMMED SLEEVES

### SIZES

LADIES: XS - 2XL  
+ OVERSIZE



• SET IN SLEEVES



• SADDLE SLEEVES



• SLEEVELESS



• SLEEVELESS  
• RACER BACK

## SUBLIMATED ZLR300 SERIES

- REVERSIBLE

### SIZES

ADULT: S - 2XL + OVERSIZE  
YOUTH: S - XL



## ZL900 SERIES

### STANDARD FEATURES

- ELASTIC WAISTBAND WITH DRAWSTRING
- 9" INSEAM ADULT
- 7" INSEAM YOUTH
- 5" INSEAM LADIES

### SIZES

ADULT: S - 2XL + OVERSIZE  
YOUTH: S - XL  
LADIES: XS - 2XL  
+ OVERSIZE



3" SIDE INSERTS



4" SIDE INSERTS

## ZL900P SERIES WITH SIDE POCKETS

### STANDARD FEATURES

- ELASTIC WAISTBAND WITH DRAWSTRING
- SIDE POCKETS
- 9" INSEAM ADULT
- 7" INSEAM YOUTH
- 5" INSEAM LADIES

### SIZES

ADULT: S - 2XL + OVERSIZE  
YOUTH: S - XL  
LADIES: XS - 2XL  
+ OVERSIZE



3" SIDE INSERTS



4" SIDE INSERTS

## ZLSK100 SERIES

### SUBLIMATED SKIRT

- ELASTIC WAISTBAND
- HEMMED BOTTOM

### SIZES

LADIES: XS - 2XL  
+ OVERSIZE



## ZLSK200 SERIES

### SUBLIMATED SKORTS

- ELASTIC WAISTBAND
- HEMMED BOTTOM
- BUILT-IN COMPRESSION SHORT

### SIZES

LADIES: XS - 2XL  
+ OVERSIZE



• BLACK SHORT ONLY

## ZLSK300 SERIES

### SUBLIMATED SKORTS

- ELASTIC WAISTBAND
- HEMMED BOTTOM
- BUILT-IN COMPRESSION SHORT

### SIZES

LADIES: XS - 2XL  
+ OVERSIZE



• SUBLIMATED SHORT

# CUSTOM SUBLIMATION BOX LACROSSE PATTERNS

## ZLB100 SERIES

### STANDARD FEATURES

- SELF FABRIC V-NECK
- DOUBLE SHOULDERS
- HEMMED SLEEVES

### SIZES

ADULT: S - 2XL + OVERSIZE  
YOUTH: S - XL

AVAILABLE IN GOALIE CUT



## ZLB200 SERIES

### STANDARD FEATURES

- SELF FABRIC V-NECK
- DOUBLE SHOULDERS
- HEMMED SLEEVES
- SIDE INSERTS

### SIZES

ADULT: S - 2XL + OVERSIZE  
YOUTH: S - XL

AVAILABLE IN GOALIE CUT



## ZLB300 SERIES

### STANDARD FEATURES

- SELF FABRIC V-NECK
- DOUBLE SHOULDERS
- HEMMED SLEEVES
- SIDE/SLEEVES INSERTS

### SIZES

ADULT: S - 2XL + OVERSIZE  
YOUTH: S - XL

AVAILABLE IN GOALIE CUT



## ZLB400 SERIES

### STANDARD FEATURES

- SELF FABRIC V-NECK
- DOUBLE SHOULDERS
- HEMMED SLEEVES
- SIDE/SLEEVES INSERTS

### SIZES

ADULT: S - 2XL + OVERSIZE  
YOUTH: S - XL

AVAILABLE IN GOALIE CUT



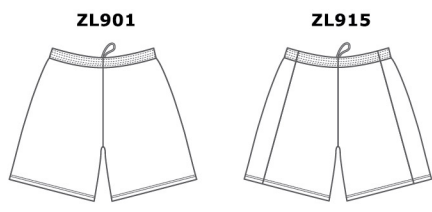
## ZL900 SERIES

### STANDARD FEATURES

- ELASTIC WAISTBAND WITH DRAWSTRING
- 9" INSEAM ADULT
- 7" INSEAM YOUTH
- 5" INSEAM LADIES

### SIZES

ADULT: S - 2XL + OVERSIZE  
YOUTH: S - XL  
LADIES: XS - 2XL  
+ OVERSIZE



• SIDE INSERTS

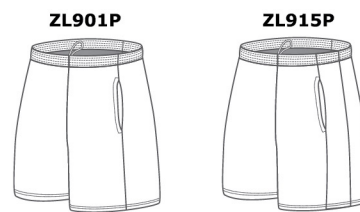
## ZL900P SERIES WITH SIDE POCKETS

### STANDARD FEATURES

- ELASTIC WAISTBAND WITH DRAWSTRING
- SIDE POCKETS
- 9" INSEAM ADULT
- 7" INSEAM YOUTH
- 5" INSEAM LADIES

### SIZES

ADULT: S - 2XL + OVERSIZE  
YOUTH: S - XL  
LADIES: XS - 2XL  
+ OVERSIZE



• SIDE INSERTS



# CUSTOM SUBLIMATION VOLLEYBALL PATTERNS

## ZV10 SERIES

### STANDARD FEATURES

- SELF FABRIC V-NECK
- HEMMED SLEEVES

### SIZES

- ADULT: S - 2XL  
+ OVERSIZE  
YOUTH: S - XL  
LADIES: XS - 2XL  
+ OVERSIZE

\* LADIES ONLY



## ZV20 SERIES

### STANDARD FEATURES

- SELF FABRIC CREW NECK
- HEMMED SLEEVES

### SIZES

- ADULT: S - 2XL  
+ OVERSIZE  
YOUTH: S - XL  
LADIES: XS - 2XL  
+ OVERSIZE

\* LADIES ONLY



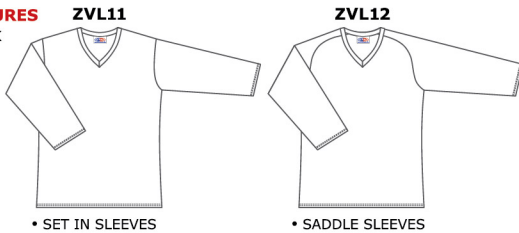
## ZVL10 SERIES

### STANDARD FEATURES

- SELF FABRIC V-NECK
- HEMMED SLEEVES

### SIZES

- ADULT: S - 2XL  
+ OVERSIZE  
YOUTH: S - XL  
LADIES: XS - 2XL  
+ OVERSIZE



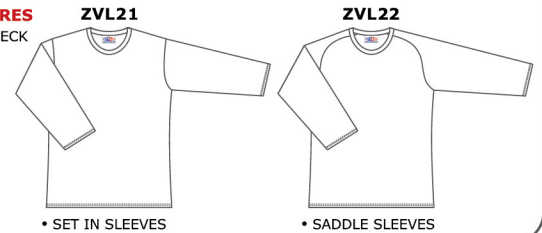
## ZVL20 SERIES

### STANDARD FEATURES

- SELF FABRIC CREW NECK
- HEMMED SLEEVES

### SIZES

- ADULT: S - 2XL  
+ OVERSIZE  
YOUTH: S - XL  
LADIES: XS - 2XL  
+ OVERSIZE



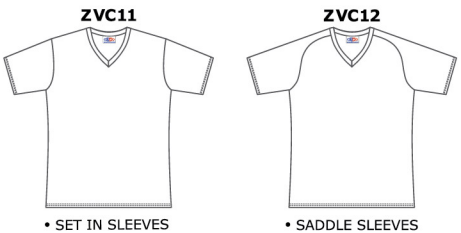
## ZVC10 SERIES COMPRESSION FIT

### STANDARD FEATURES

- SELF FABRIC V-NECK
- HEMMED SLEEVES

### SIZES

- ADULT: S - 2XL  
+ OVERSIZE  
YOUTH: S - XL  
LADIES: XS - 2XL  
+ OVERSIZE



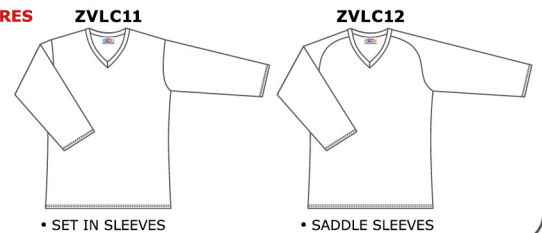
## ZVLC10 SERIES COMPRESSION FIT

### STANDARD FEATURES

- SELF FABRIC V-NECK
- HEMMED SLEEVES

### SIZES

- ADULT: S - 2XL  
+ OVERSIZE  
YOUTH: S - XL  
LADIES: XS - 2XL  
+ OVERSIZE



## ZVC20 SERIES COMPRESSION FIT

### STANDARD FEATURES

- SELF FABRIC CREW NECK
- HEMMED SLEEVES

### SIZES

- ADULT: S - 2XL  
+ OVERSIZE  
YOUTH: S - XL  
LADIES: XS - 2XL  
+ OVERSIZE



## ZVLC20 SERIES COMPRESSION FIT

### STANDARD FEATURES

- SELF FABRIC CREW NECK
- HEMMED SLEEVES

### SIZES

- ADULT: S - 2XL  
+ OVERSIZE  
YOUTH: S - XL  
LADIES: XS - 2XL  
+ OVERSIZE



## ZVS90 SERIES

### STANDARD FEATURES

- ELASTIC WAISTBAND WITH DRAWSTRING
- 9" INSEAM ADULT
- 7" INSEAM YOUTH
- 5" INSEAM LADIES

### OPTIONS AVAILABLE

- SIDE POCKETS (ZVS91P)

### SIZES

- ADULT: S - 2XL  
+ OVERSIZE  
YOUTH: S - XL  
LADIES: XS - 2XL  
+ OVERSIZE



## ZVS100C SERIES

### STANDARD FEATURES

- COMPRESSION SHORTS
- ELASTIC WAIST
- 3" INSEAM

### SIZES

- LADIES: XS - 2XL  
+ OVERSIZE





# CUSTOM SUBLIMATION SOCCER PATTERNS

## ZS10 SERIES

### STANDARD FEATURES

- SELF FABRIC V-NECK
- HEMMED SLEEVES

### SIZES

- ADULT: S - 2XL  
+ OVERSIZE
- YOUTH: S - XL
- LADIES: XS - 2XL  
+ OVERSIZE



• SET IN SLEEVES



• SADDLE SLEEVES



• RAGLAN SLEEVES

## ZS20 SERIES

### STANDARD FEATURES

- SELF FABRIC CREW NECK
- HEMMED SLEEVES

### SIZES

- ADULT: S - 2XL  
+ OVERSIZE
- YOUTH: S - XL
- LADIES: XS - 2XL  
+ OVERSIZE



• SET IN SLEEVES



• SADDLE SLEEVES



• RAGLAN SLEEVES

## ZSS90 SERIES

### STANDARD FEATURES

- ELASTIC WAISTBAND WITH DRAWSTRING
- 9" INSEAM ADULT
- 7" INSEAM YOUTH
- 5" INSEAM LADIES

### OPTIONS AVAILABLE

- SIDE POCKETS (**ZSS91P**)

### SIZES

- ADULT: S - 2XL  
+ OVERSIZE
- YOUTH: S - XL
- LADIES: XS - 2XL  
+ OVERSIZE



# CUSTOM SUBLIMATION TRACK & FIELD PATTERNS

## ZT20 SERIES

### STANDARD FEATURES

- HEMMED CREW NECK
- HEMMED ARMHOLES

### SIZES

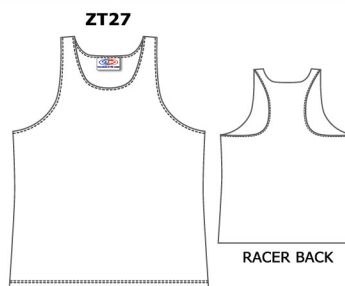
ADULT: S - 2XL  
+ OVERSIZE  
YOUTH: S - XL  
LADIES: XS - 2XL  
+ OVERSIZE



MUSCLE CUT



TRADITIONAL CUT



TRADITIONAL CUT

RACER BACK

## ZTC20 SERIES COMPRESSION FIT

### STANDARD FEATURES

- SELF FABRIC CREW NECK
- HEMMED SLEEVES

### SIZES

ADULT: S - 2XL  
+ OVERSIZE  
YOUTH: S - XL  
LADIES: XS - 2XL  
+ OVERSIZE



• SET IN SLEEVES



• SADDLE SLEEVES

## ZTS900 SERIES

### STANDARD FEATURES

- ELASTIC WAISTBAND WITH DRAWSTRING
- 5" INSEAM ADULT
- 5" INSEAM YOUTH
- 5" INSEAM LADIES

### SIZES

ADULT: S - 2XL  
+ OVERSIZE  
YOUTH: S - XL  
LADIES: XS - 2XL  
+ OVERSIZE



ZTS901

## ZTS100C SERIES

### STANDARD FEATURES

- COMPRESSION SHORTS
- ELASTIC WAIST
- 3" INSEAM

### SIZES

LADIES: XS - 2XL  
+ OVERSIZE



ZTS101C

# CUSTOM SUBLIMATION RUGBY PATTERNS

## ZR20 SERIES

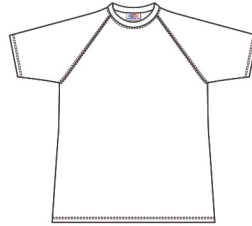
### STANDARD FEATURES

- SELF FABRIC CREW NECK
- COVERSEAM
- HEMMED SLEEVES

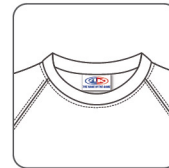
### SIZES

ADULT: S - 2XL  
+ OVERSIZE  
YOUTH: S - XL  
LADIES: XS - 2XL  
+ OVERSIZE

ZR23



• RAGLAN SLEEVES



• CREW NECK

## ZR40 SERIES

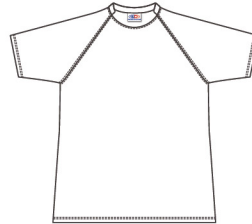
### STANDARD FEATURES

- SELF FABRIC STAND UP COLLAR
- COVERSEAM
- HEMMED SLEEVES

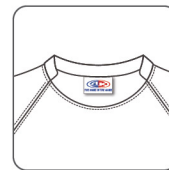
### SIZES

ADULT: S - 2XL  
+ OVERSIZE  
YOUTH: S - XL  
LADIES: XS - 2XL  
+ OVERSIZE

ZR43



• RAGLAN SLEEVES



• STAND UP COLLAR

## ZR60 SERIES

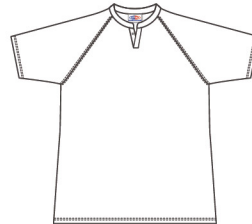
### STANDARD FEATURES

- ONE BUTTON MANDARIN COLLAR
- COVERSEAM
- HEMMED SLEEVES

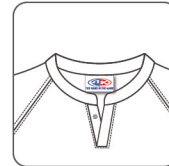
### SIZES

ADULT: S - 2XL  
+ OVERSIZE  
YOUTH: S - XL  
LADIES: XS - 2XL  
+ OVERSIZE

ZR63



• RAGLAN SLEEVES



• ONE BUTTON  
MANDARIN COLLAR

## ZRS900 SERIES

### STANDARD FEATURES

- ELASTIC WAISTBAND  
WITH DRAWSTRING
- COVERSEAM
- 5" INSEAM MENS
- 5" INSEAM YOUTH
- 5" INSEAM LADIES

### SIZES

ADULT: S - 2XL  
+ OVERSIZE  
YOUTH: S - XL  
LADIES: XS - 2XL  
+ OVERSIZE

ZRS901



# CUSTOM SUBLIMATION CYCLING PATTERNS

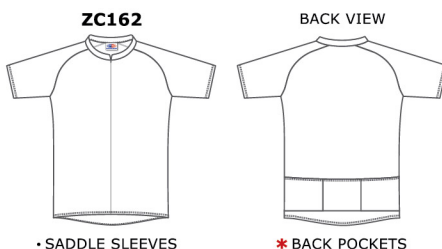
## ZC100 SERIES CLUB FIT

### STANDARD FEATURES

- SEMI-RELAXED FIT
- DRYFLEX - LIGHTWEIGHT MOISTURE WICKING FABRIC
- SELF FABRIC MANDARIN COLLAR
- 1/2 ZIPPER
- HEMMED SLEEVES

### SIZES

ADULT: S - 2 XL  
+ OVERSIZE  
LADIES: XS - 2 XL  
+ OVERSIZE



• SADDLE SLEEVES

\* BACK POCKETS

### OPTIONS AVAILABLE

- \* 3 BACK POCKETS (ZC162P) - SHOWN
- FULL ZIPPER (ZC172)
- SILICONE SLEEVE POWERBAND
- SILICONE WAIST GRIPPER

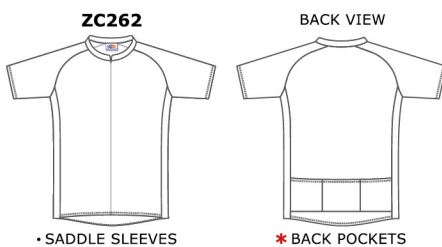
## ZC200 SERIES CLUB FIT

### STANDARD FEATURES

- SEMI-RELAXED FIT
- DRYFLEX - LIGHTWEIGHT MOISTURE WICKING FABRIC
- SELF FABRIC MANDARIN COLLAR
- 1/2 ZIPPER
- 1 PIECE SIDE INSERTS
- HEMMED SLEEVES

### SIZES

ADULT: S - 2 XL  
+ OVERSIZE  
LADIES: XS - 2 XL  
+ OVERSIZE



• SADDLE SLEEVES

\* BACK POCKETS

### OPTIONS AVAILABLE

- \* 3 BACK POCKETS (ZC262P) - SHOWN
- FULL ZIPPER (ZC272)
- SILICONE SLEEVE POWERBAND
- SILICONE WAIST GRIPPER

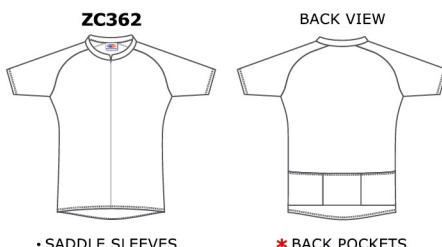
## ZC300 SERIES RACE FIT

### STANDARD FEATURES

- ANATOMICALLY PRE-SHAPED - FORM FITTED
- POLYSPAN 92 - LIGHTWEIGHT MOISTURE WICKING FABRIC
- FLAT SEAM TECHNOLOGY
- SELF FABRIC MANDARIN COLLAR
- 1/2 ZIPPER
- HEMMED SLEEVES

### SIZES

ADULT: S - 2 XL  
+ OVERSIZE  
LADIES: XS - 2 XL  
+ OVERSIZE



• SADDLE SLEEVES

\* BACK POCKETS

### OPTIONS AVAILABLE

- \* 3 BACK POCKETS (ZC362P) - SHOWN
- FULL ZIPPER (ZC372)
- SILICONE SLEEVE POWERBAND
- SILICONE WAIST GRIPPER

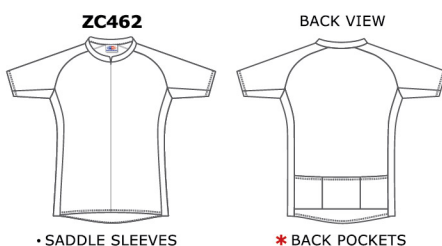
## ZC400 SERIES RACE FIT

### STANDARD FEATURES

- ANATOMICALLY PRE-SHAPED - FORM FITTED
- POLYSPAN 92 - LIGHTWEIGHT MOISTURE WICKING FABRIC
- FLAT SEAM TECHNOLOGY
- SELF FABRIC MANDARIN COLLAR
- 1/2 ZIPPER
- 1 PIECE SIDE/SLEEVE INSERTS
- HEMMED SLEEVES

### SIZES

ADULT: S - 2 XL  
+ OVERSIZE  
LADIES: XS - 2 XL  
+ OVERSIZE



• SADDLE SLEEVES

\* BACK POCKETS

### OPTIONS AVAILABLE

- \* 3 BACK POCKETS (ZC462P) - SHOWN
- FULL ZIPPER (ZC472)
- SILICONE SLEEVE POWERBAND
- SILICONE WAIST GRIPPER

## ZCS550 SHORTS RACE FIT

### STANDARD FEATURES

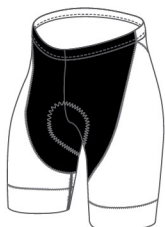
- ANATOMICALLY PRE-SHAPED - FORM FITTED
- SHIELD ENDURANCE FABRIC OFFERS HIGH OPACITY AND ULTIMATE COMFORT
- 2012W FABRIC
- FLAT SEAM TECHNOLOGY
- ELASTIC INTERFACE COMP HP 4 DENSITY CHAMOIS
- HIGH WAIST DESIGN TO PREVENT WAISTBAND CURL
- POWERBAND LEG TRIM

### OPTIONS AVAILABLE

- SILICONE LEG POWERBAND

### SIZES

ADULT: S - 2 XL  
+ OVERSIZE  
LADIES: XS - 2 XL  
+ OVERSIZE



## ZCB750 BIB SHORTS RACE FIT

### STANDARD FEATURES

- ANATOMICALLY PRE-SHAPED - FORM FITTED
- SHIELD ENDURANCE FABRIC OFFERS HIGH OPACITY AND ULTIMATE COMFORT
- 2012W FABRIC
- FULL MOON LIGHTWEIGHT MESH BIB FABRIC OFFERS STRETCH AND BREATHABILITY
- FLAT SEAM TECHNOLOGY
- ELASTIC INTERFACE COMP HP 4 DENSITY CHAMOIS
- POWERBAND LEG TRIM

### OPTIONS AVAILABLE

- SILICONE LEG POWERBAND

### SIZES

ADULT: S - 2 XL  
+ OVERSIZE  
LADIES: XS - 2 XL  
+ OVERSIZE

