



WASHINGTON, BY AND BY

A COMMUNITY PLANNING
GRAPHIC NOVEL

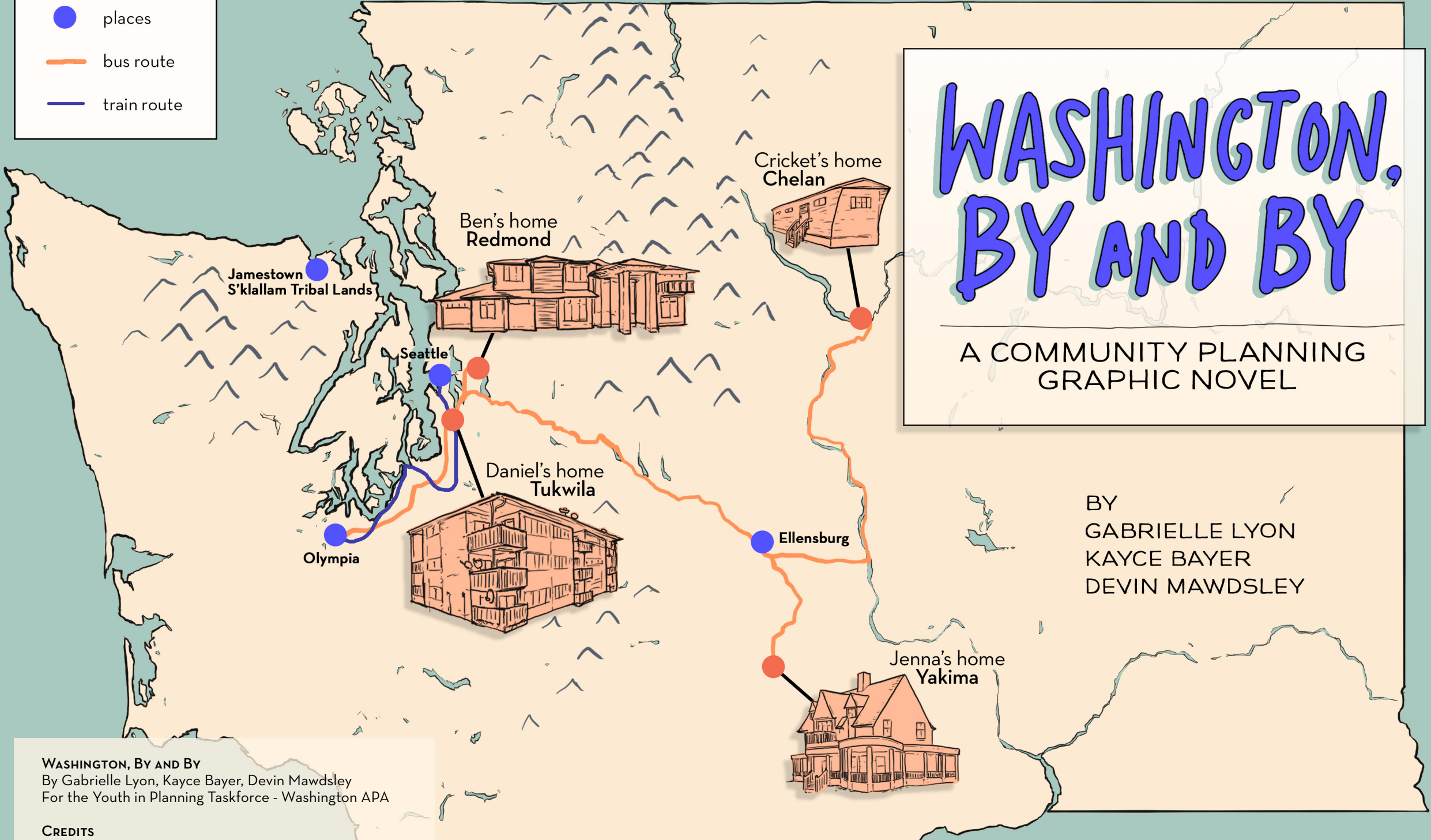
BY
GABRIELLE LYON
KAYCE BAYER
DEVIN MAWDSLEY

- homes
- places
- bus route
- train route

WASHINGTON, BY AND BY

A COMMUNITY PLANNING
GRAPHIC NOVEL

BY
GABRIELLE LYON
KAYCE BAYER
DEVIN MAWDSLEY



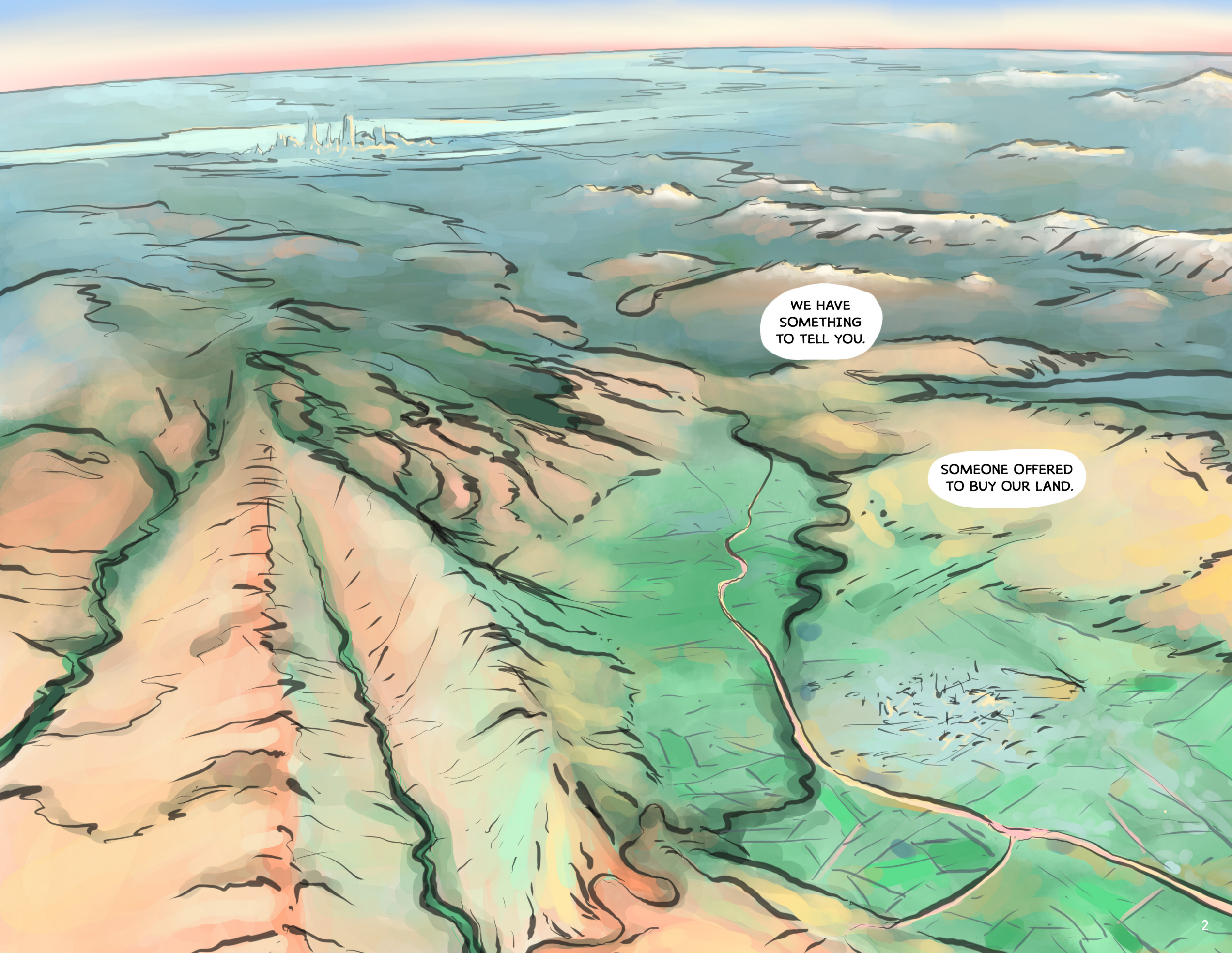
WASHINGTON, BY AND BY
By Gabrielle Lyon, Kayce Bayer, Devin Mawdsley
For the Youth in Planning Taskforce - Washington APA

CREDITS
Gabrielle Lyon: Creative Director, Writer, Editor
Kayce Bayer: Writing, Research, Color, Lettering, Design
Devin Mawdsley: Pencil and Ink

© 2019 Lyon, Bayer, Mawdsley
ISBN: 978-0-578-55462-4
Publication date: September 1, 2019

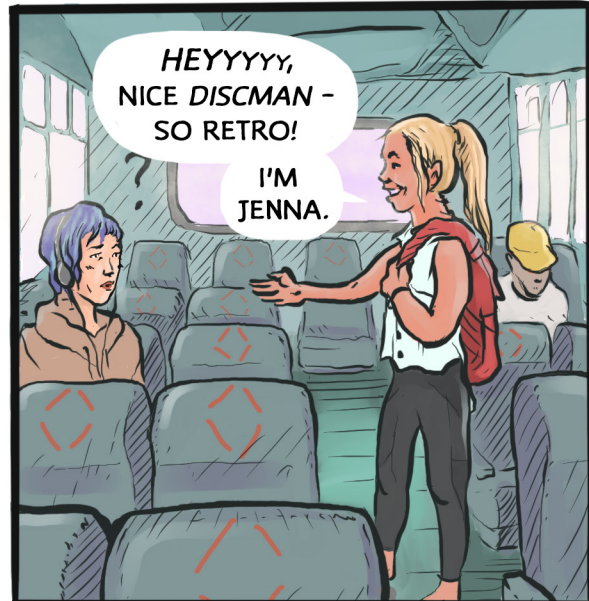
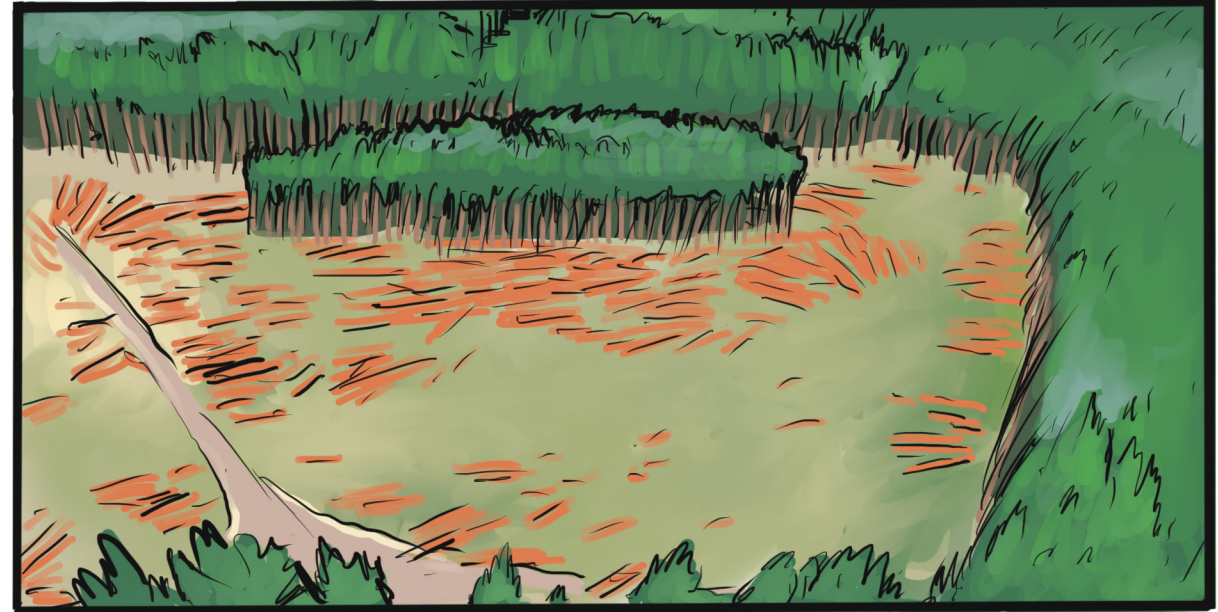
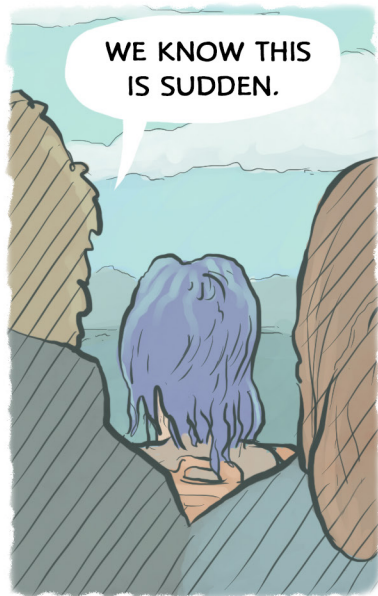
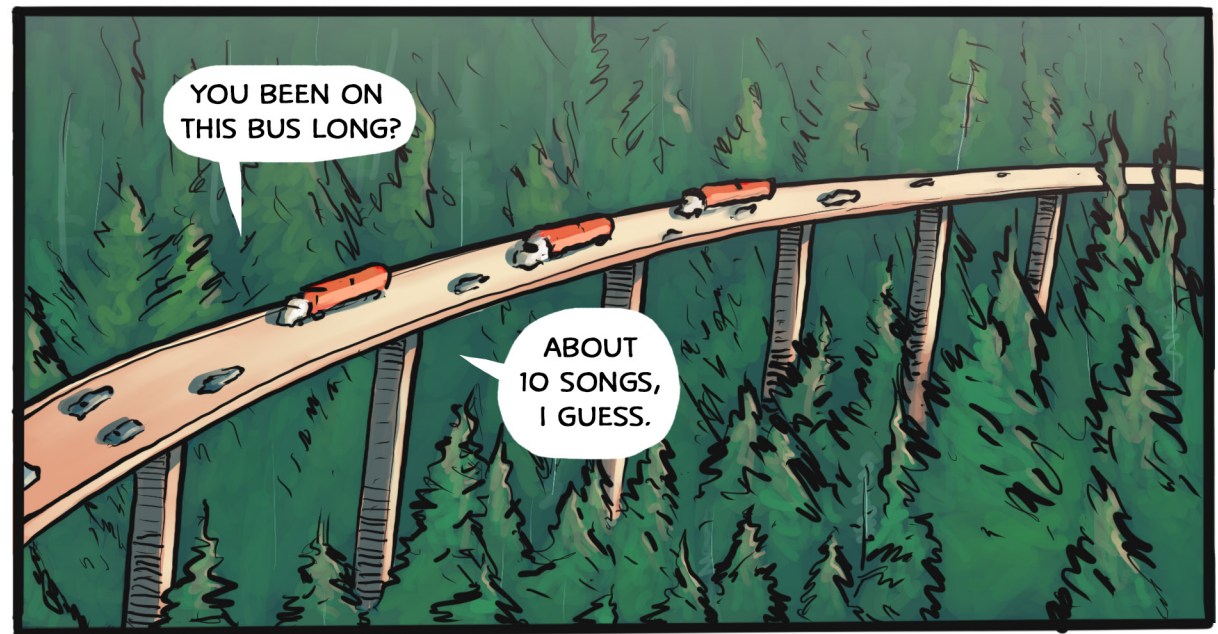
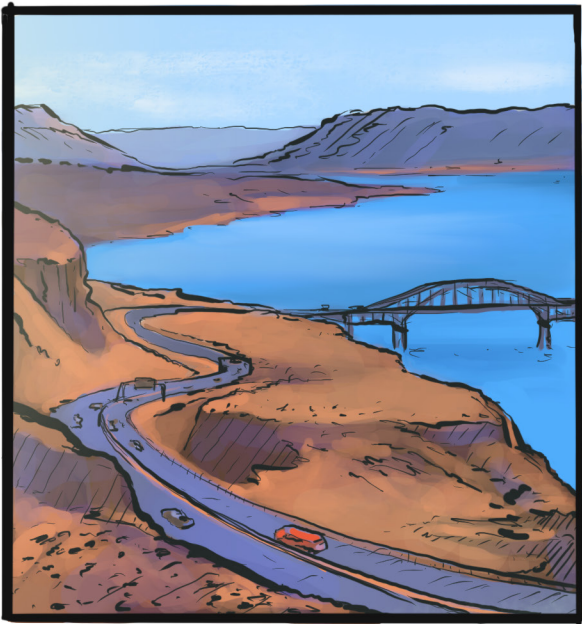
For more information:
www.washington-apa.org/youth-in-planning

IT IS SUMMER. TEENS FROM AROUND THE STATE ARE HEADING TO OLYMPIA, WASHINGTON, FOR A SUMMER PROGRAM ABOUT COMMUNITY PLANNING AND HOUSING. AS THE PROGRAM UNFOLDS, CRICKET, JENNA, DANIEL AND BEN ARE FORCED TO CONFRONT THE INTERSECTIONS OF POWER, DEVELOPMENT AND DISPLACEMENT IN THEIR LIVES AND IN THE LIVES OF THE PEOPLE AROUND THEM.

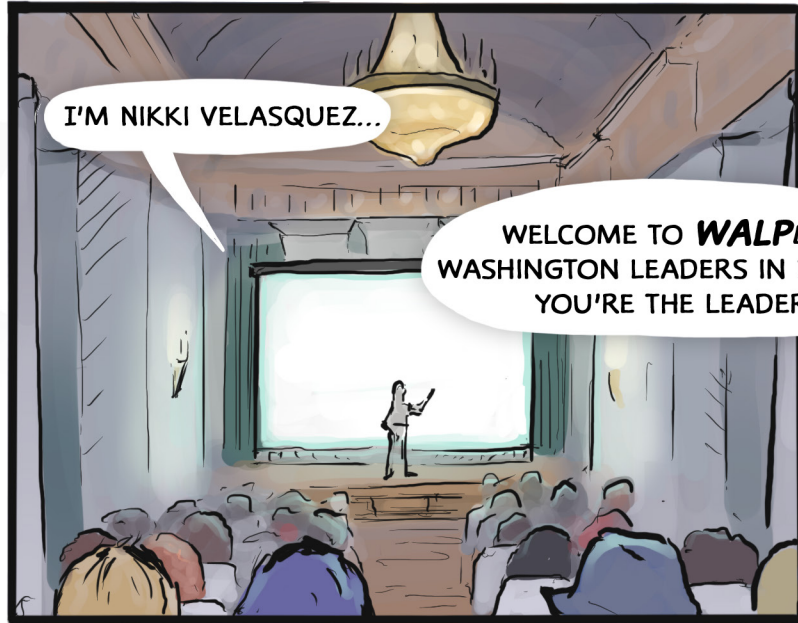
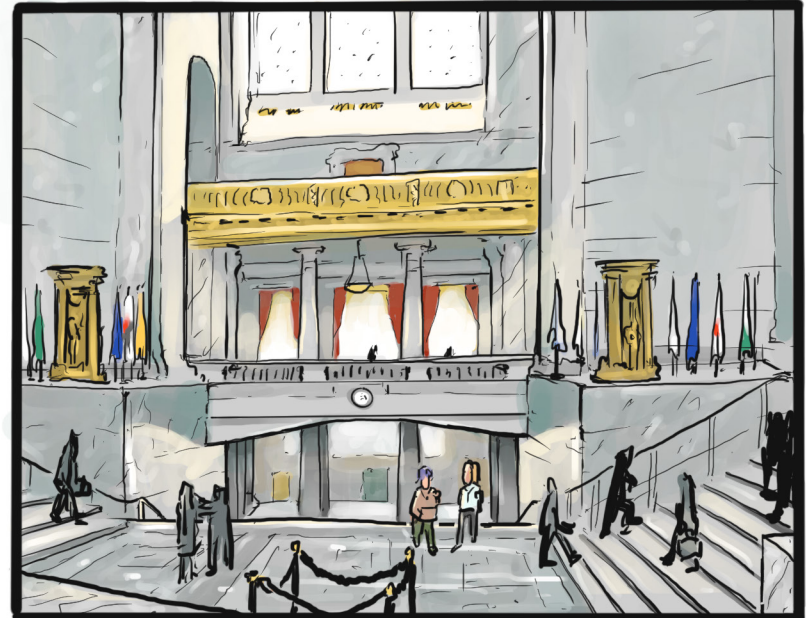


WE HAVE
SOMETHING
TO TELL YOU.

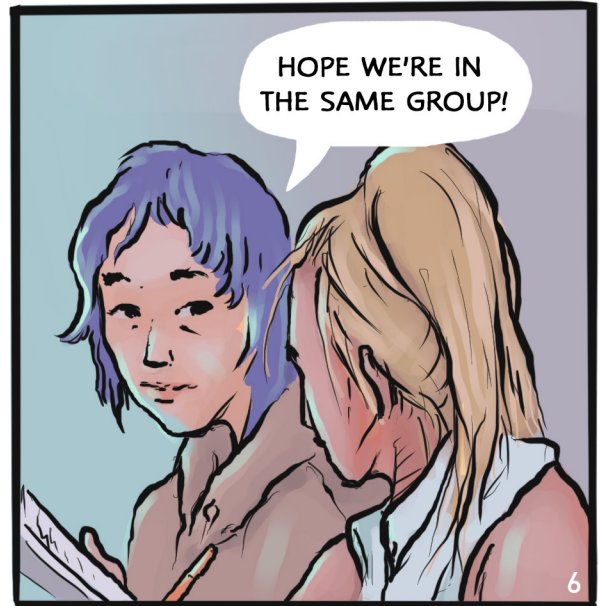
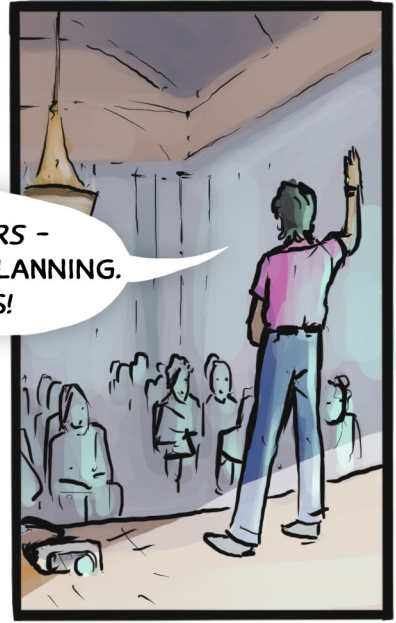
SOMEONE OFFERED
TO BUY OUR LAND.

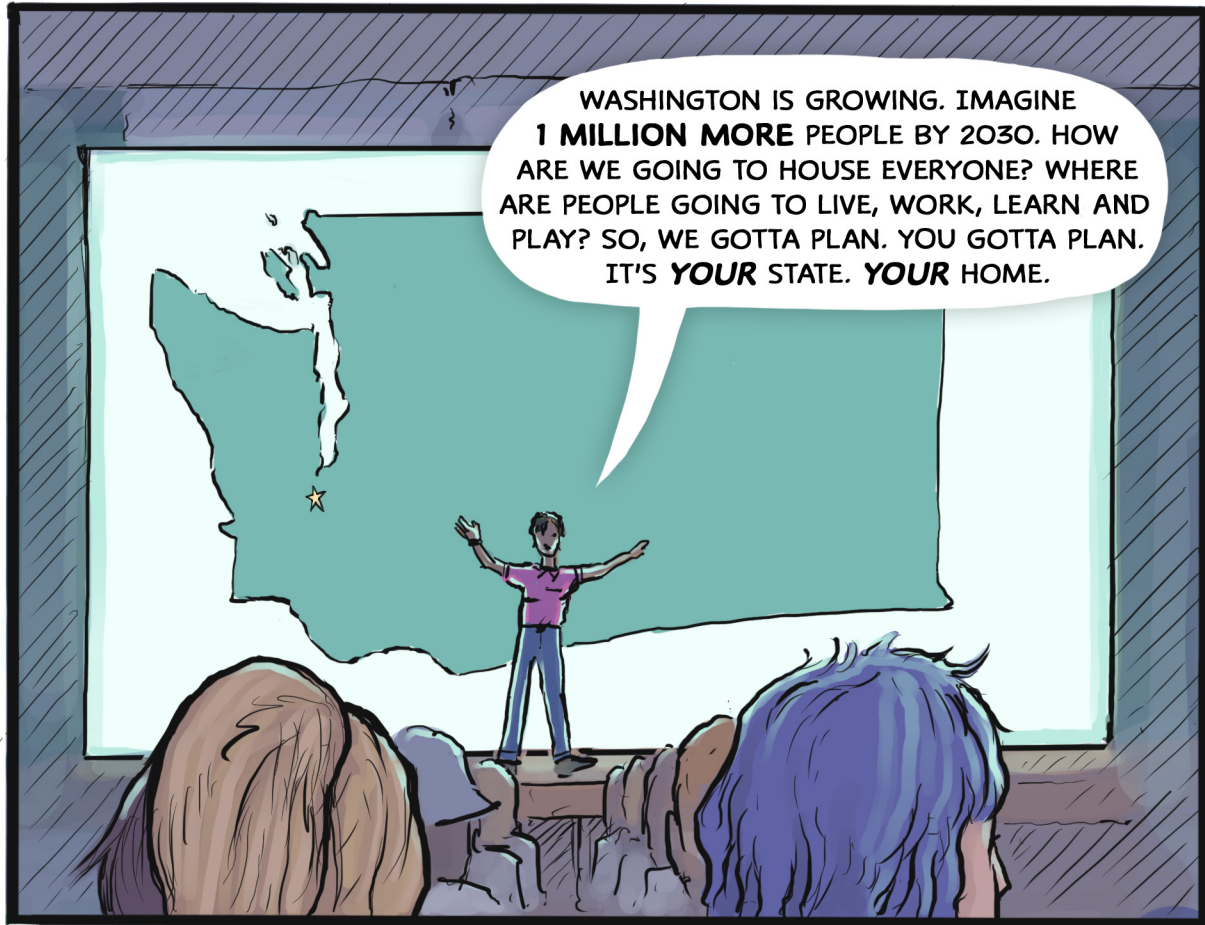


OLYMPIA, WA

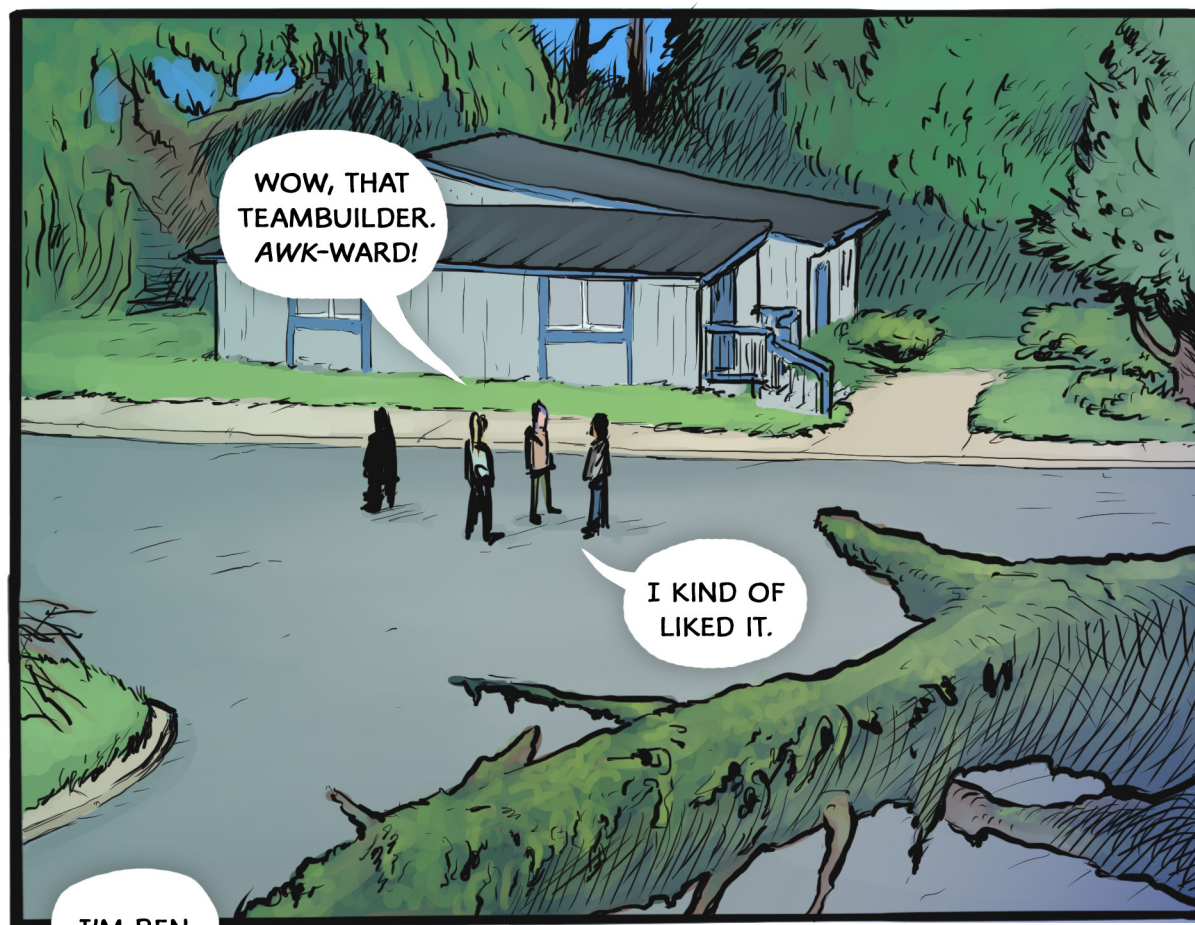


WELCOME TO **WALPERS** - WASHINGTON LEADERS IN PLANNING. YOU'RE THE LEADERS!





WASHINGTON IS GROWING. IMAGINE 1 MILLION MORE PEOPLE BY 2030. HOW ARE WE GOING TO HOUSE EVERYONE? WHERE ARE PEOPLE GOING TO LIVE, WORK, LEARN AND PLAY? SO, WE GOTTA PLAN. YOU GOTTA PLAN. IT'S **YOUR STATE. YOUR HOME.**



WOW, THAT TEAMBUILDER. AWK-WARD!

I KIND OF LIKED IT.

I'M BEN.



THE CHALLENGE...

BALANCE GROWTH, NATURE, AGRICULTURE...

HOW TO GET YOUTH INVOLVED...

YOU'LL WORK IN TEAMS...

Day 3 - WALP Intro:

39 counties +

1 million more?

281 cities

traffic - sprawl - pollution

DANGER 2 wildlife,

nature, water,

PEOPLE!!

Yakima!

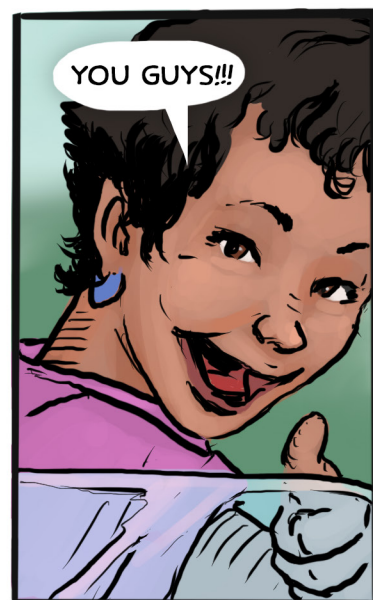
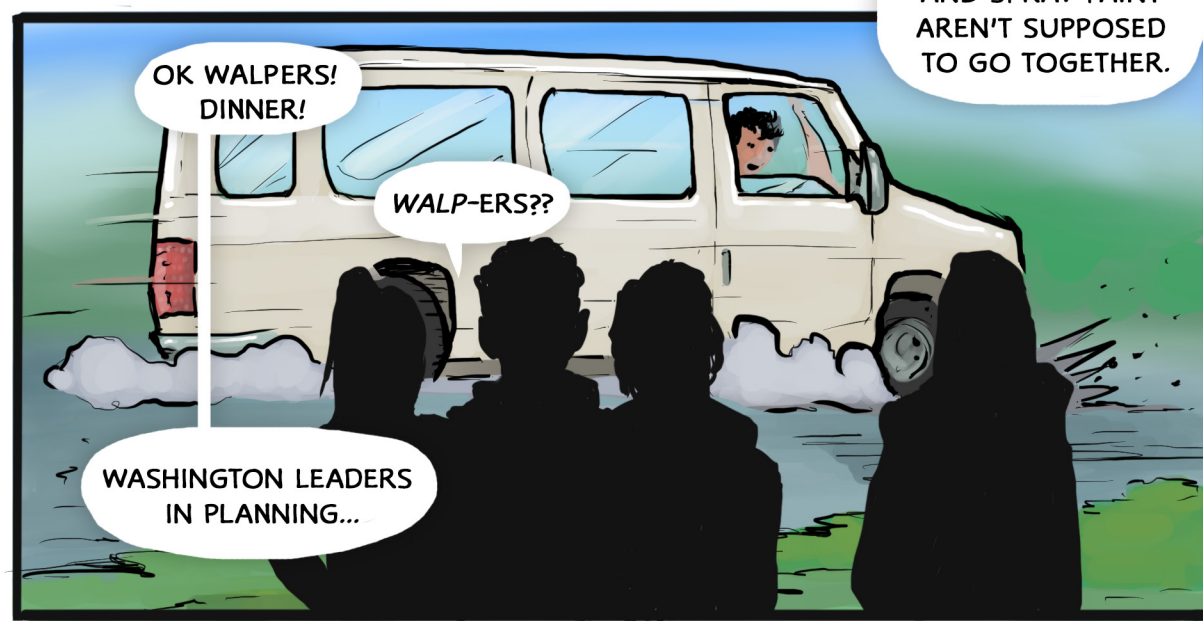
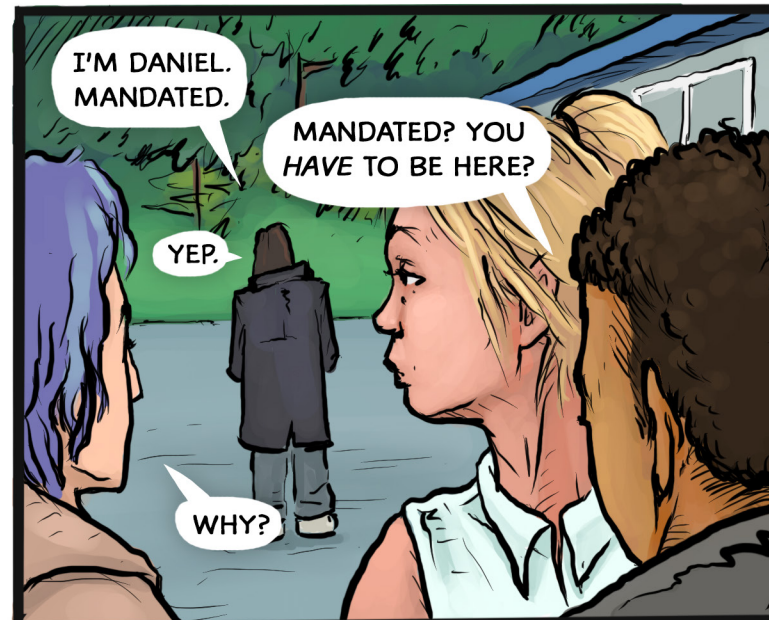
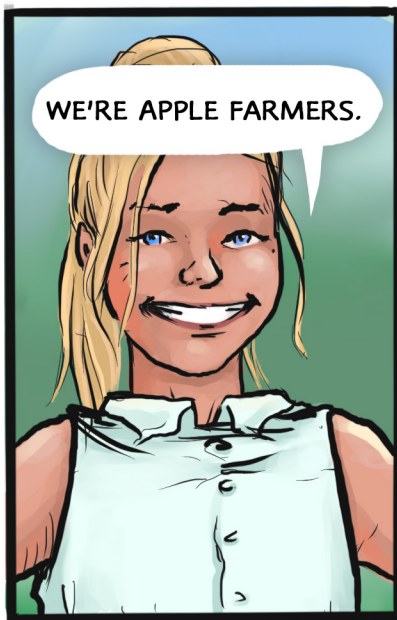
out of control vs. control
PLAN FOR THE LONG HAIL



YOU GUYS KNOW EACH OTHER?



WE MET ON THE BUS.





GMA = Growth management
 14 goals to manage
 - reduce sprawl
 - regional transport
 - housing + transportation = regional development
 - affordable housing
 - economic development
 - property rights
 - open space
 PLANNED at COMMUNITY LEVEL



TAAS
 GREEN BUILDING TECH & ENERGY
 CARS & SUBURBS!
 DADUS = DETACHED ACCESSORY DWELLING UNITS
 For: YOUNG PEOPLE SINGLES OLDER ADULTS



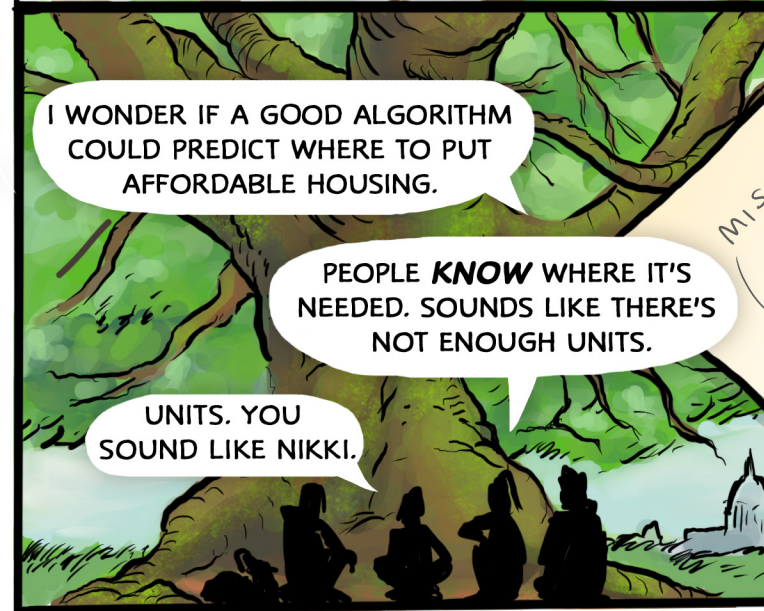
I NEVER REALIZED EVERYTHING IS PLANNED. EVEN WHERE MY FARM IS ALLOWED TO BE.

IS THERE A PUBLIC PROCESS? THEY SAY SO, BUT HOW DOES ANYONE EVER HEAR ABOUT IT?



IT MAKES IT IMPOSSIBLE FOR ANYONE TO BUILD ANYTHING NEW!

BE REALISTIC. PEOPLE HAVE TO HAVE SOMEPLACE TO LIVE.



I WONDER IF A GOOD ALGORITHM COULD PREDICT WHERE TO PUT AFFORDABLE HOUSING.

PEOPLE **KNOW** WHERE IT'S NEEDED. SOUNDS LIKE THERE'S NOT ENOUGH UNITS.

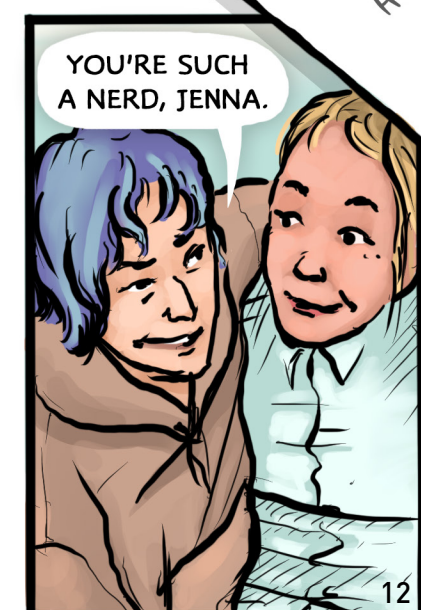
UNITS. YOU SOUND LIKE NIKKI.



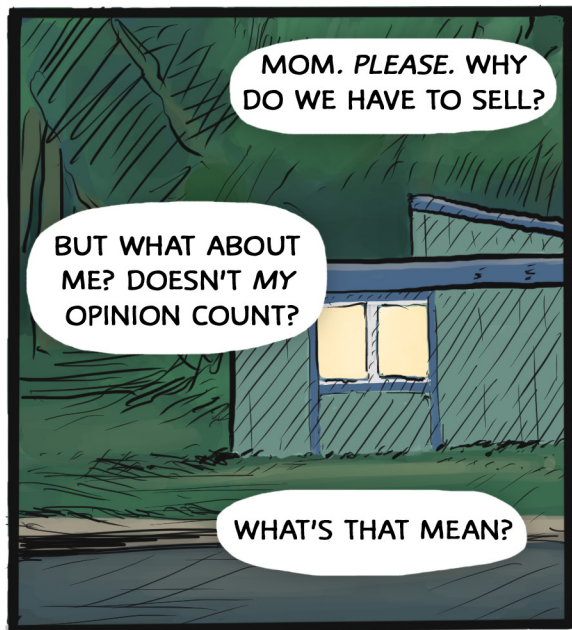
Housing is a **HUMAN RIGHT!**
 - Housing is affordable IF $\leq 30\%$ of household budget
 Tenants have rights!



REALLY??



YOU'RE SUCH A NERD, JENNA.



MOM. PLEASE. WHY DO WE HAVE TO SELL?

BUT WHAT ABOUT ME? DOESN'T MY OPINION COUNT?

WHAT'S THAT MEAN?



WE'VE BEEN WAITING FOR THIS CHANCE.

IF WE SELL NOW, WE'LL BE ABLE TO AFFORD A PLACE IN TOWN.

IT'S A GOOD INVESTMENT. WE'RE DOING IT FOR YOU.



WHAT HAPPENED?

THEY'RE DEFINITELY SELLING. WE'RE MOVING.



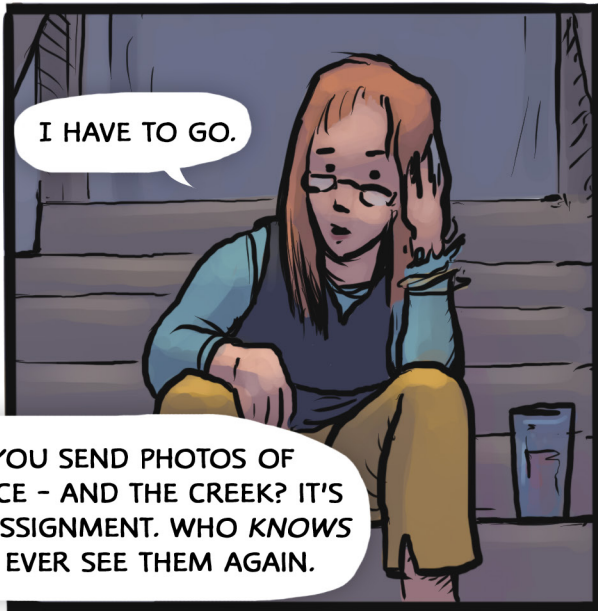
MAN, THAT SUCKS.



I HATE TOWN.

WAIT!

CAN YOU SEND PHOTOS OF OUR PLACE - AND THE CREEK? IT'S FOR AN ASSIGNMENT. WHO KNOWS IF I'LL EVER SEE THEM AGAIN.



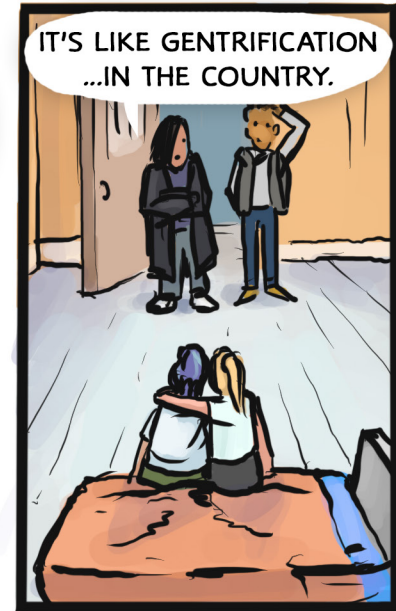
I HAVE TO GO.



WAIT. ARE YOU TALKING ABOUT LAKE CHELAN?



MY MOM SAYS THEY CAN GET GOOD MONEY FOR IT. **SOMEBODY** WANTS TO DEVELOP.



IT'S LIKE GENTRIFICATION ...IN THE COUNTRY.



YOU'LL SEE THEM AGAIN. WE WON'T MOVE UNTIL SEPTEMBER.



I CAN'T BELIEVE YOU GUYS! YOU'RE RUINING MY LIFE.

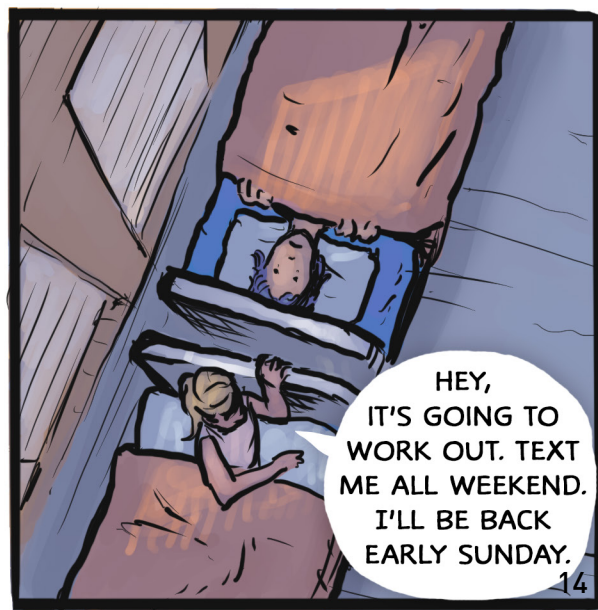


I'M SORRY YOU'RE ANGRY.

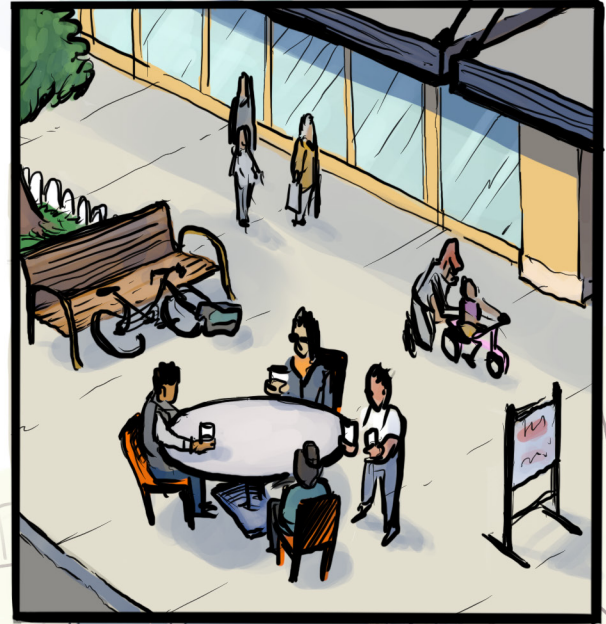
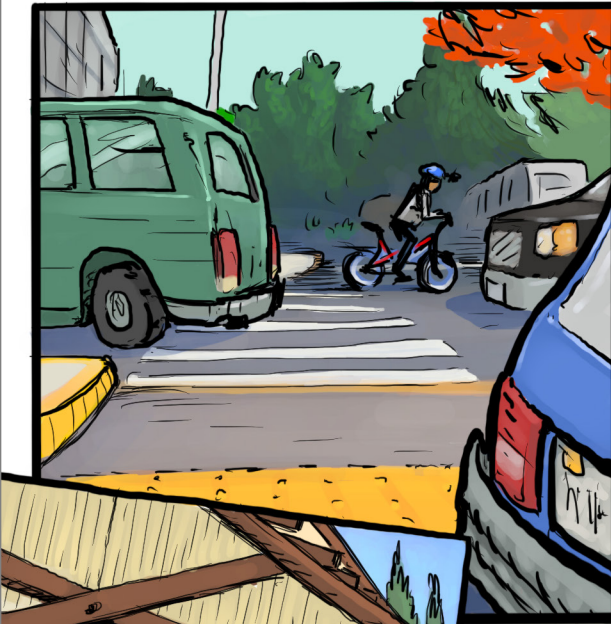
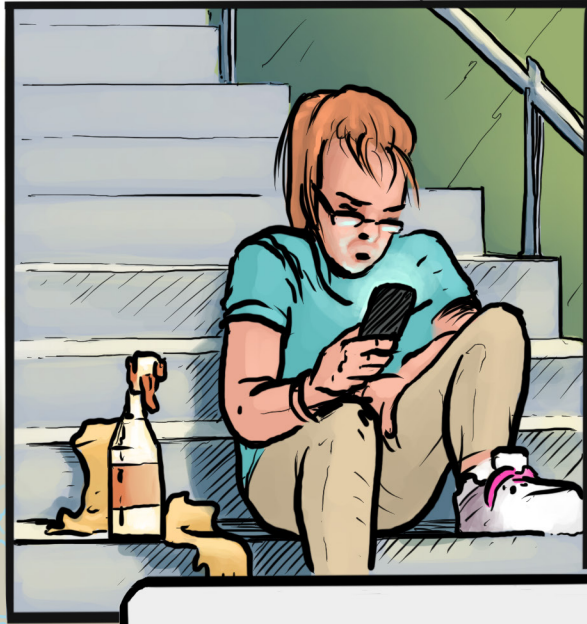
CLICK



OK WALPERS! DON'T FORGET YOUR COMMUNITY PLANNING HOMEWORK THIS WEEKEND.



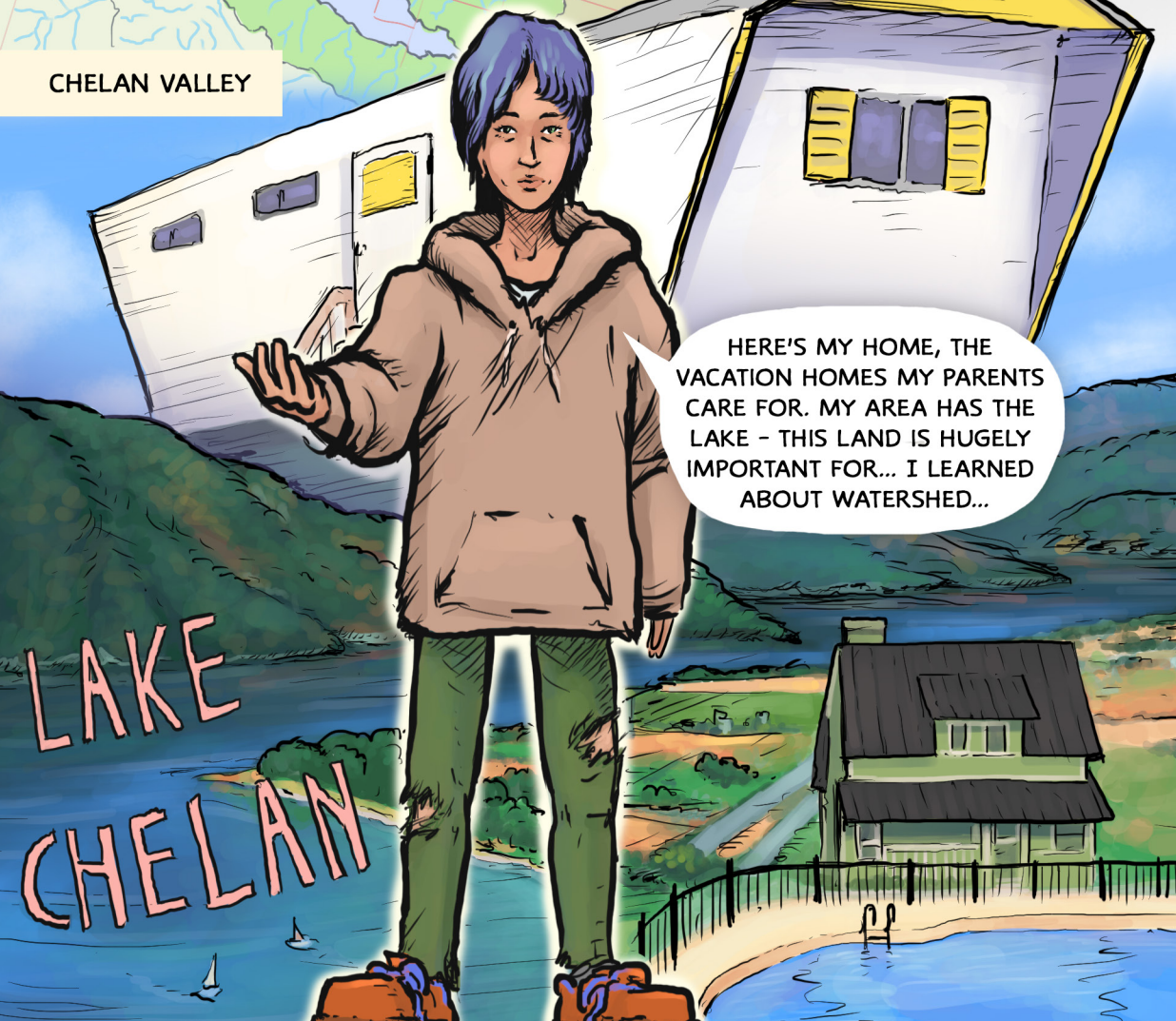
HEY, IT'S GOING TO WORK OUT. TEXT ME ALL WEEKEND. I'LL BE BACK EARLY SUNDAY.



Here are the pics Bug. I know change is hard. Call me

CHELAN VALLEY

REDMOND



HERE'S MY HOME, THE VACATION HOMES MY PARENTS CARE FOR. MY AREA HAS THE LAKE - THIS LAND IS HUGE IMPORTANT FOR... I LEARNED ABOUT WATERSHED...

MOST PEOPLE DRIVE, BUT WE'VE GOT MAD BIKE LANES, GREEN BUILDINGS, STRIP MALLS, RECREATIONAL SPACES...



PLANNING DOES MATTER. IT ALWAYS HAS.

TUKWILA



WE HAD LEISURE TIME BECAUSE WE KNEW HOW TO LIVE WITH WHAT THE LAND PROVIDED.

QUINALT COAST



YAKIMA VALLEY



MY 3 POINTS ON COMMUNITY PLANNING:
1. PLAN FOR 7 GENERATIONS
2. CONFRONT CLIMATE CRISIS
3. LIVE WITH NATURE

Earth Island Journal - Spring 2017
Losing Home
As rising waters eat away the land beneath their feet, many Native communities are turning into climate refugees.
ZOE LOFTUS-FARREN
Fawn Sharp grew up in Taholah village, a small Quinault Reservation nestled between the mouth of the Quinault River and the Pacific Ocean. She remembers summers surrounded by water, splashing in Lake Quinalt, and hiking along the eastern edge of the reservation, and hiking along the shore near the village, scouring the rocks for starfish and other treasures. In the mornings, she was often up before dawn, fishing with her grandparents on the river. When she left home for college, Sharp is back on the reservation in Taholah. Now she goes by President Sharp, the Quinault Indian Nation and the Northwest Indians. Sharp has faced the toughest of tough issues the reservation has ever seen, during the decline of the reservation. She's



COMMUNITY PLANNING IN MY AREA IS ALL ABOUT AGRICULTURE - RESOURCE LANDS, WORKER HOUSING, OPPORTUNITIES FOR ECONOMIC DEVELOPMENT...

EN ROUTE TO SEATTLE

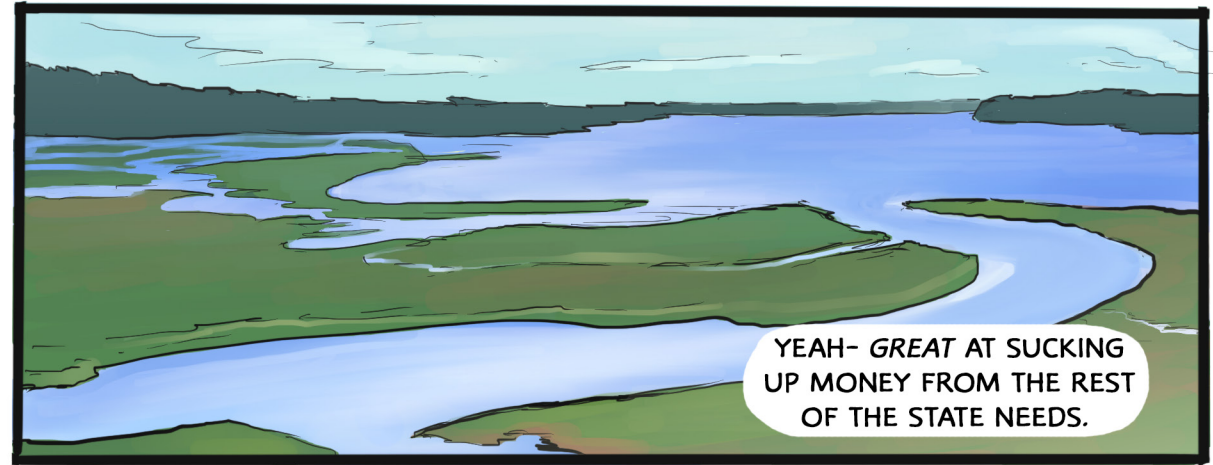
OK WALPERS!
LET'S TALK FIELD TRIP!

DOES SHE HAVE
TO CALL US THAT?

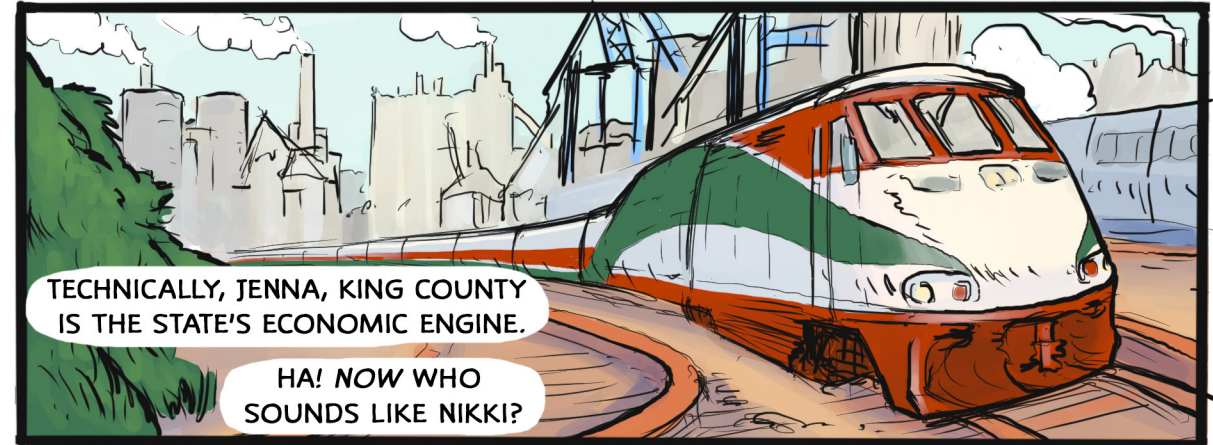
WE ARRIVE AT KING
STATION, WALK TO THE
WING LUKE MUSEUM.

WE'LL GO TO THE SEATTLE
PUBLIC LIBRARY TO SIT IN ON
A COMMUNITY MEETING.
THEN, FREE TIME.

COFFEE!!! SOOO
MUCH GOOD COFFEE!

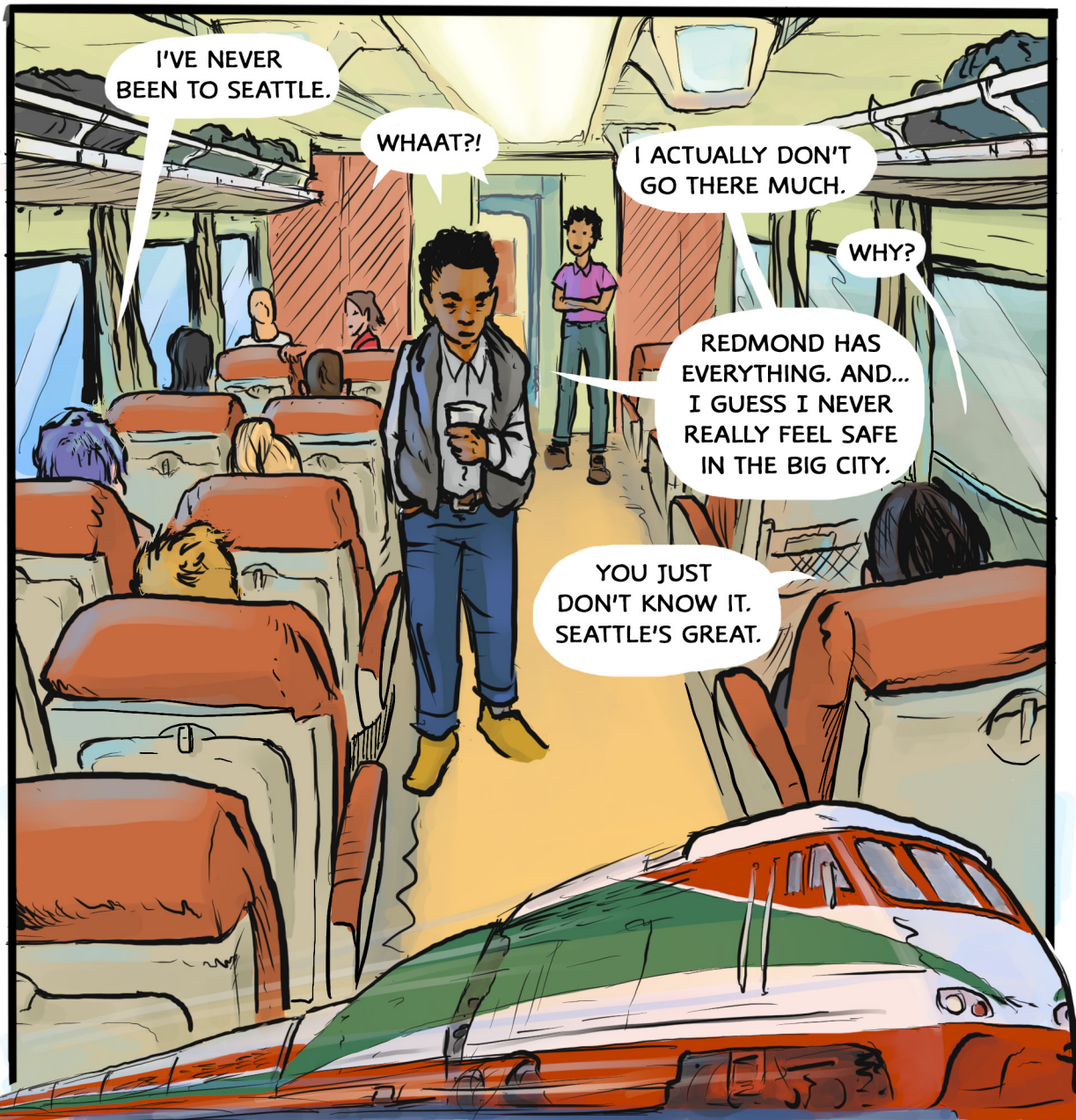


YEAH- GREAT AT SUCKING
UP MONEY FROM THE REST
OF THE STATE NEEDS.



TECHNICALLY, JENNA, KING COUNTY
IS THE STATE'S ECONOMIC ENGINE.

HA! NOW WHO
SOUNDS LIKE NIKKI?



I'VE NEVER
BEEN TO SEATTLE.

WHAAT?!

I ACTUALLY DON'T
GO THERE MUCH.

WHY?

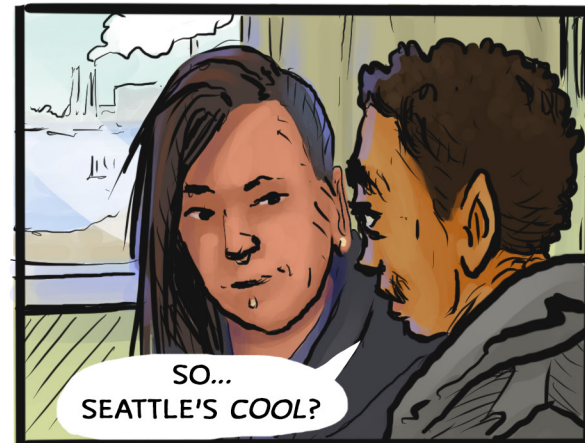
REDMOND HAS
EVERYTHING. AND...
I GUESS I NEVER
REALLY FEEL SAFE
IN THE BIG CITY.

YOU JUST
DON'T KNOW IT.
SEATTLE'S GREAT.

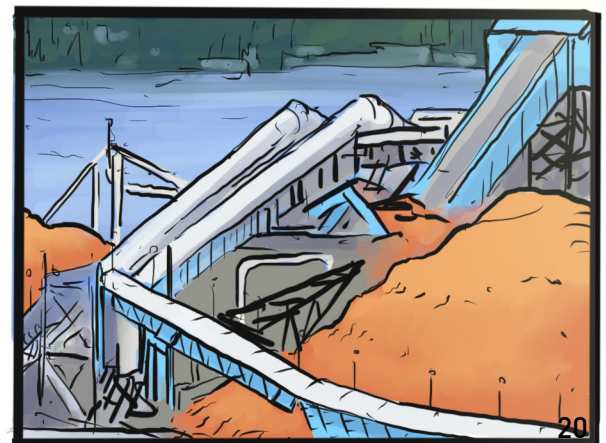


IT'S SO
INDUSTRIAL
HERE.

HARD TO IMAGINE THIS ALL
USED TO BE NATURE, HUH?



SO...
SEATTLE'S COOL?





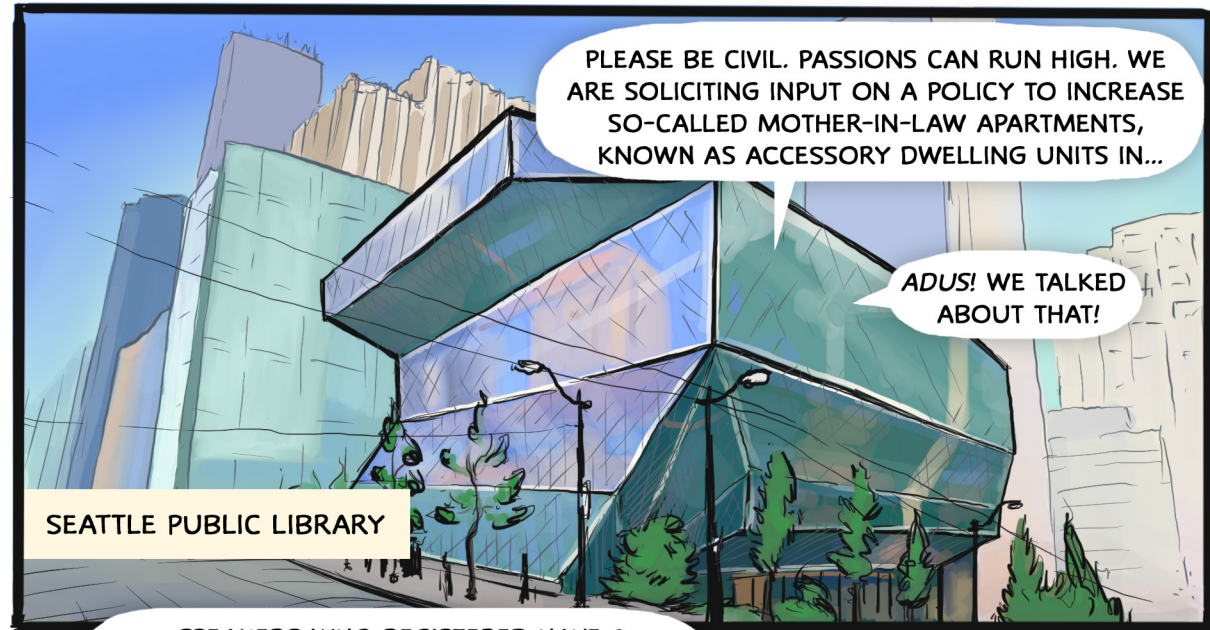
KING STREET STATION



WHY DO THEY CALL IT INTERNATIONAL DISTRICT? IT SEEMS LIKE CHINATOWN.



WING LUKE MUSEUM



SEATTLE PUBLIC LIBRARY

PLEASE BE CIVIL. PASSIONS CAN RUN HIGH. WE ARE SOLICITING INPUT ON A POLICY TO INCREASE SO-CALLED MOTHER-IN-LAW APARTMENTS, KNOWN AS ACCESSORY DWELLING UNITS IN...

ADUS! WE TALKED ABOUT THAT!

redlining

Tools of segregation

citizenship

discrimination

ability to

wire me

stga

ans

C.13

whatory

covenant

made

illega

to

w

in

Africa

mer

no Asians) ← booi

I THINK.

YEAH. BUT THEY'RE BETTER THAN THIS.

DON'T YOU HAVE WORKERS? EVER BEEN TO THEIR HOUSES?

THESE ROOMS ARE REALLY SMALL. HOW COULD PEOPLE LIVE SO CRAMPED?

LOOK AT THIS MAP. THE PEOPLE BEING PUSHED OUT NOW...

- ARE THE SAME PEOPLE WHO WERE DISCRIMINATED AGAINST BY REDLINING!

YOU WILL NOT SANITIZE OUR QUESTIONS!

WE'RE TAKING QUESTIONS.

I NEED MORE THAN 2 MINUTES!

THAT DOESN'T SEEM FAIR.

WHY DON'T PEOPLE JUST TEXT THE QUESTIONS AND EVERYONE COULD SEE THEM?

WHY CAN'T EVERYONE HAVE A CHANCE TO SPEAK?

SPEAKERS WHO REGISTERED HAVE 2 MINUTES. IF YOU DID NOT REGISTER WRITE YOUR QUESTIONS AND WE'LL TRY TO GET TO IT.

THAT DOESN'T SEEM FAIR.

WE'RE TAKING QUESTIONS.

I NEED MORE THAN 2 MINUTES!

YOU WILL NOT SANITIZE OUR QUESTIONS!

WHY DON'T PEOPLE JUST TEXT THE QUESTIONS AND EVERYONE COULD SEE THEM?

WHY CAN'T EVERYONE HAVE A CHANCE TO SPEAK?

NOW INSTEAD OF ONE FAMILY LIVING NEXT DOOR THERE COULD BE THREE?! FOR WHAT? AN IMAGINED, NOT-YET-HERE POPULATION.

PEOPLE ARE BIASED AGAINST RENTERS. WHAT ABOUT PEOPLE LIKE ME AND MY GIRLFRIEND? WE'RE JUST TRYING TO GET A START.

WHERE ARE PEOPLE SUPPOSED TO PARK?

THE PEOPLE AGAINST THIS ARE PRIMARILY WHITE, SENIORS AND HOMEOWNERS.

OUR STUDIES SHOW THAT CAR OWNERSHIP DECREASES AS HOUSE SIZE GETS SMALLER.

NO ONE IS LISTENING TO EACH OTHER.

THIS IS GOING TO CAUSE LAND SPECULATION, RAISE PROPERTY TAXES!

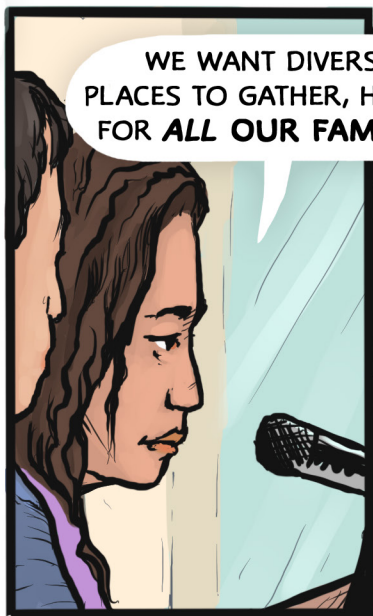
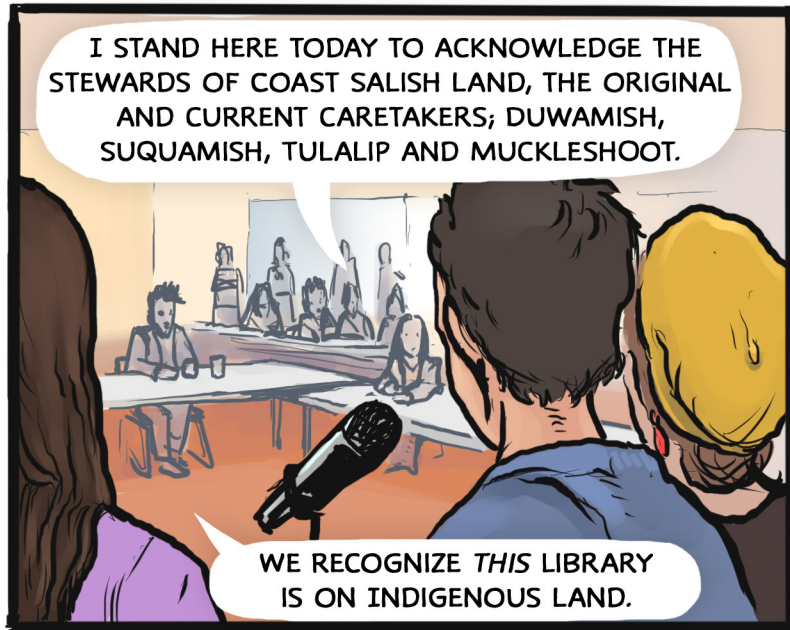
SPECULATORS ARE TEARING DOWN SINGLE FAMILY HOUSES....

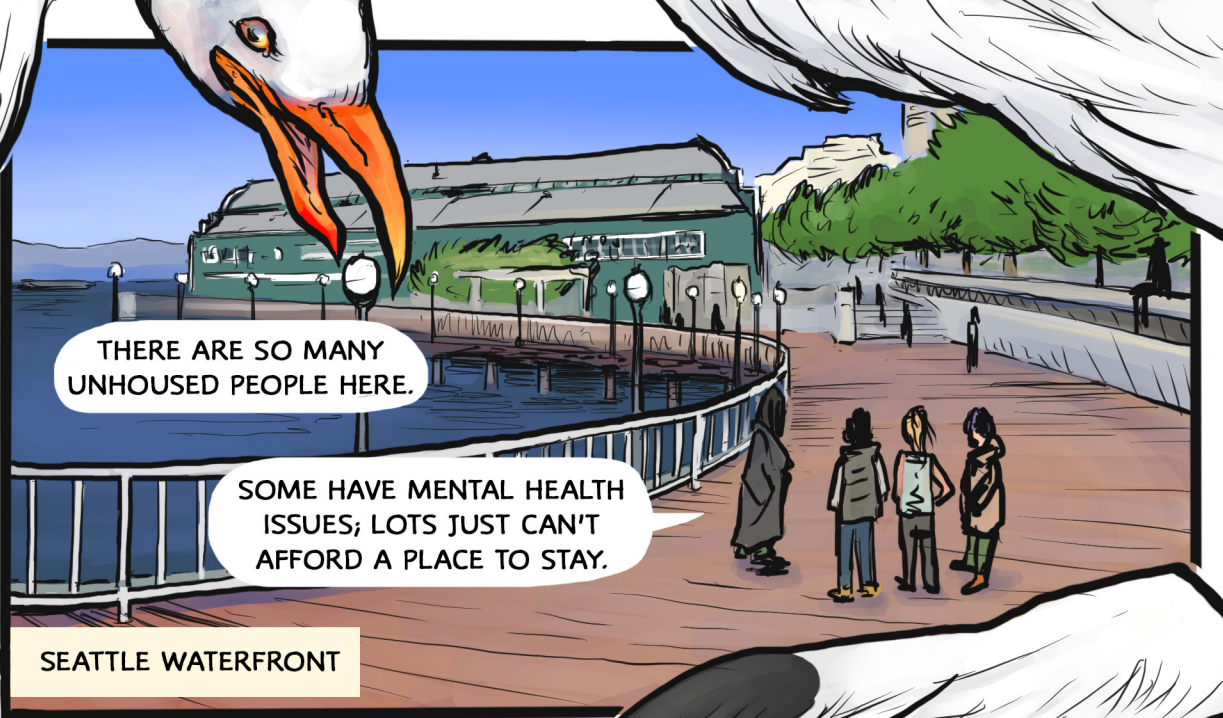
ADUS HELP ENSURE WE CAN HAVE MORE HOUSING FOR...



YOU'RE RECOGNIZED.

MIMI AND I WILL SPEAK ON BEHALF OF OUR GROUP.

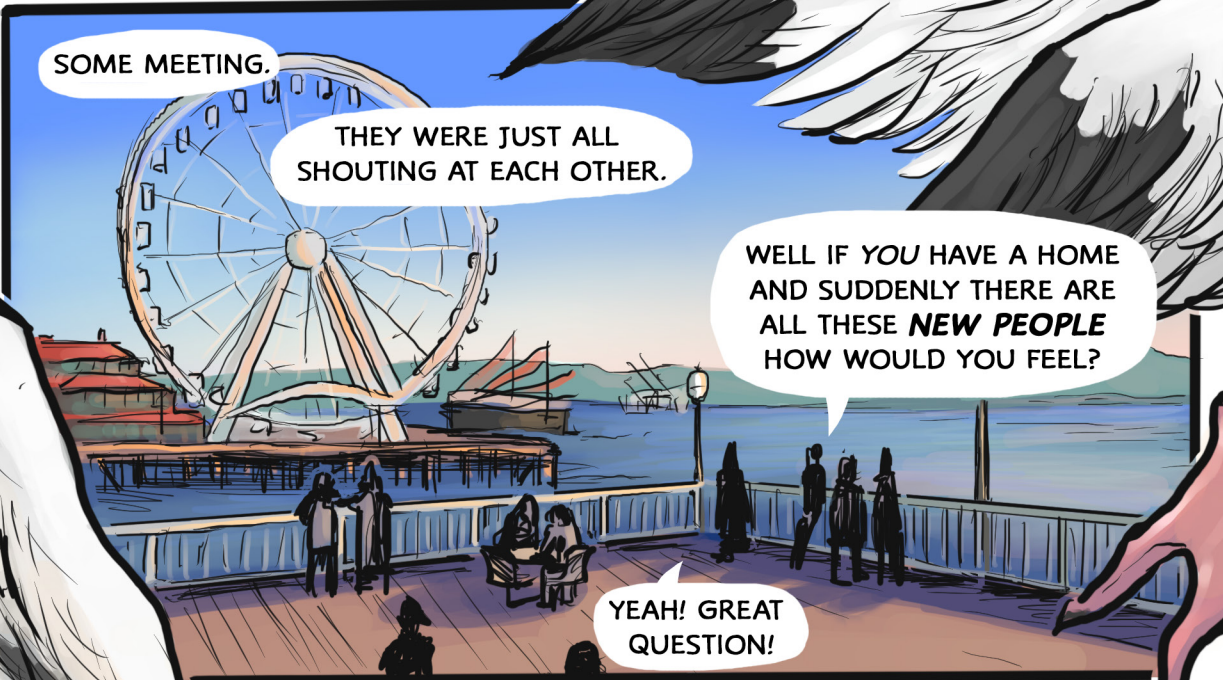




THERE ARE SO MANY UNHOUSED PEOPLE HERE.

SOME HAVE MENTAL HEALTH ISSUES; LOTS JUST CAN'T AFFORD A PLACE TO STAY.

SEATTLE WATERFRONT

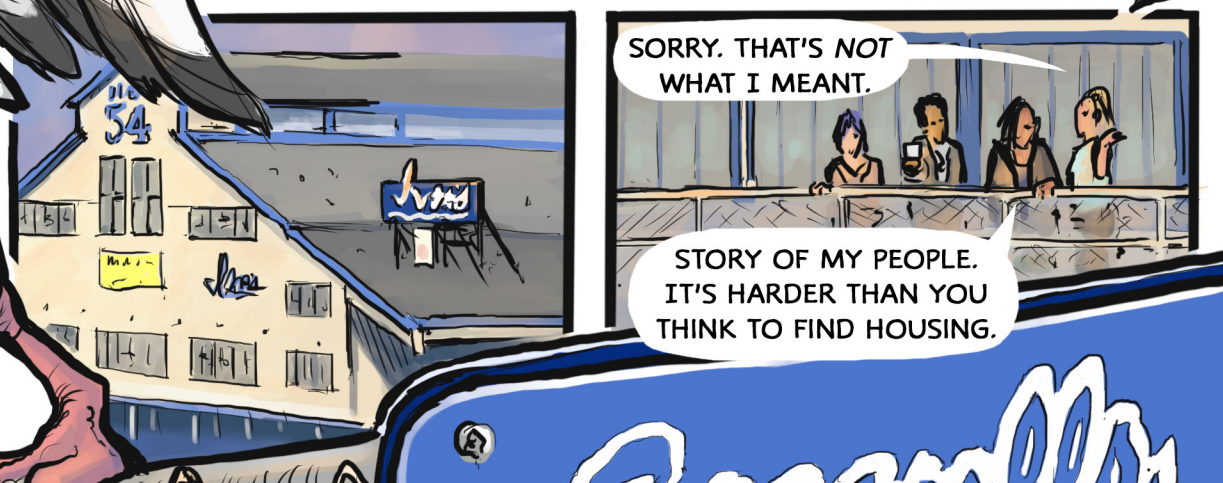


SOME MEETING.

THEY WERE JUST ALL SHOUTING AT EACH OTHER.

WELL IF YOU HAVE A HOME AND SUDDENLY THERE ARE ALL THESE **NEW PEOPLE** HOW WOULD YOU FEEL?

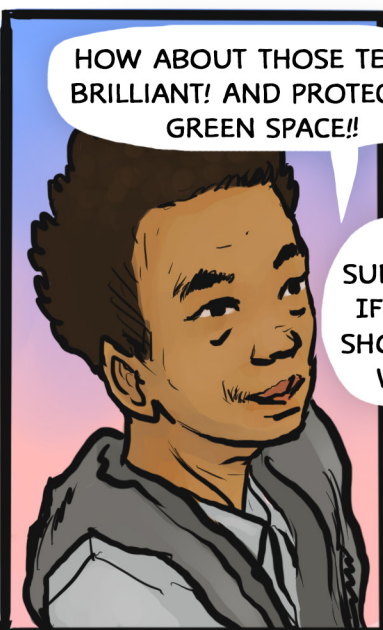
YEAH! GREAT QUESTION!



SORRY. THAT'S NOT WHAT I MEANT.

STORY OF MY PEOPLE. IT'S HARDER THAN YOU THINK TO FIND HOUSING.

Evans



HOW ABOUT THOSE TEENS? BRILLIANT! AND PROTECTING GREEN SPACE!!

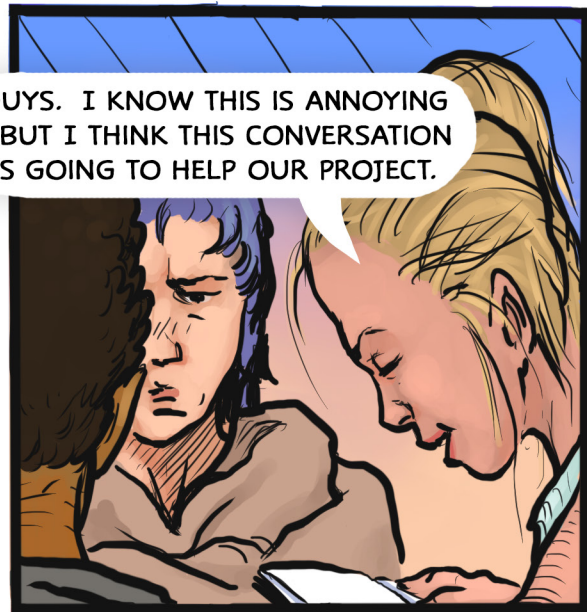


WHERE IS STUFF SUPPOSED TO BE BUILT? IF I OWN PROPERTY I SHOULD BE ABLE TO DO WHATEVER I WANT.

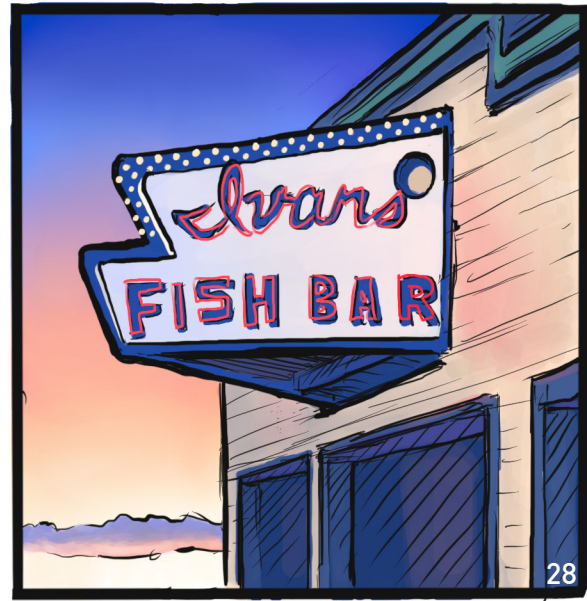
I DON'T UNDERSTAND WHY YOU'RE SO VEHEMENT ABOUT GREEN SPACE **HERE?!** YOU'RE BUILDING A SECOND HOME ON GREEN SPACE IN CHELAN.

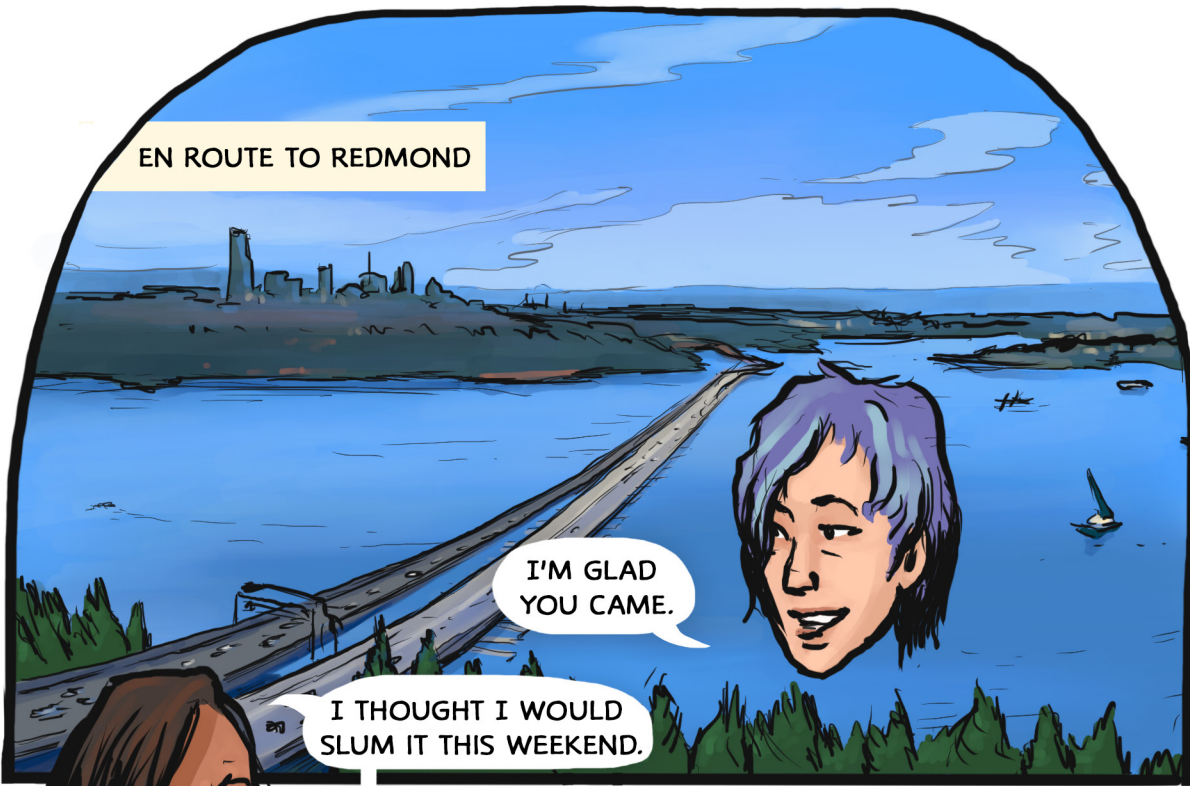


WE'RE STARTING TO SOUND LIKE THAT COMMUNITY MEETING.



GUYS. I KNOW THIS IS ANNOYING - BUT I THINK THIS CONVERSATION IS GOING TO HELP OUR PROJECT.

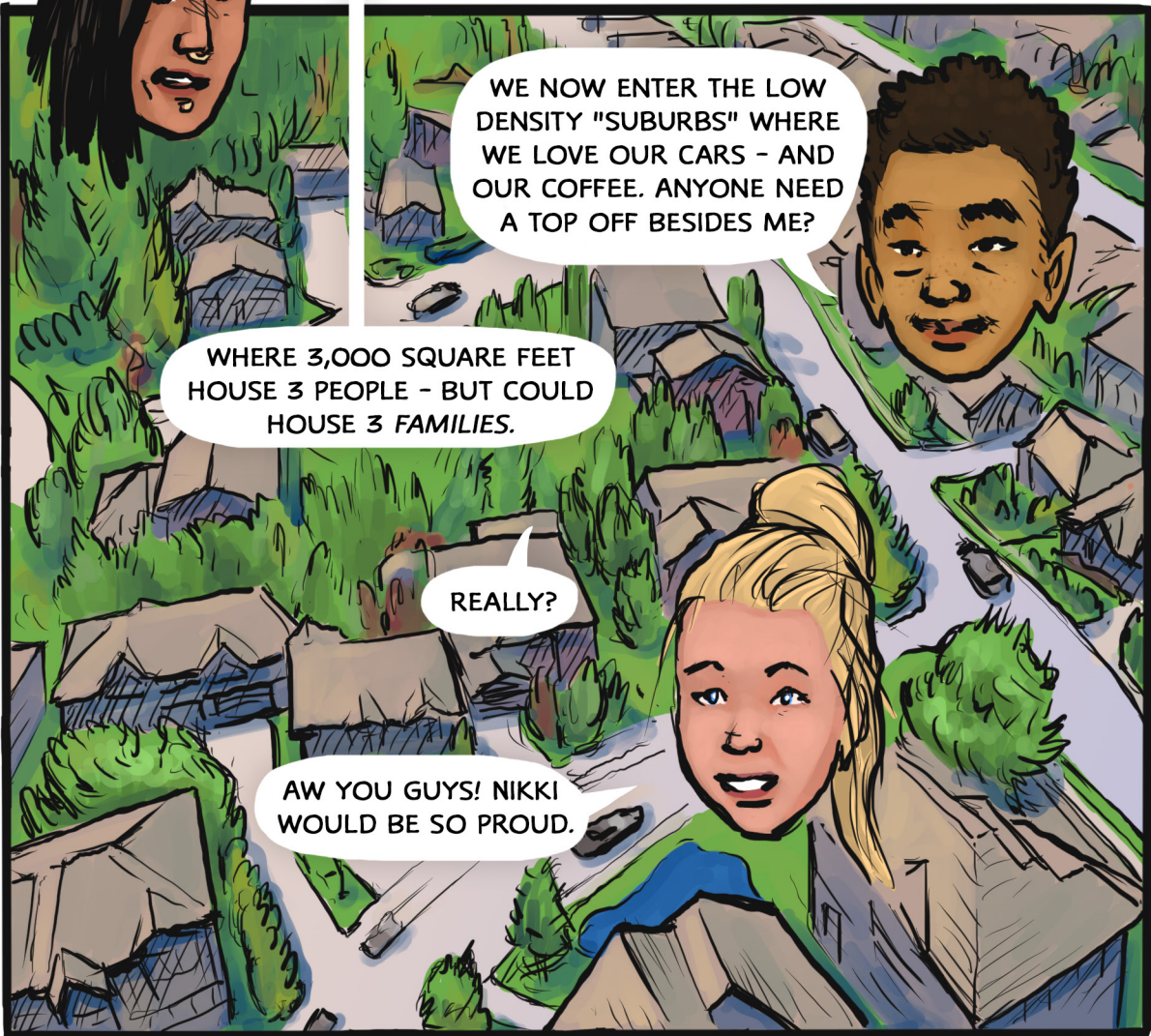




EN ROUTE TO REDMOND

I'M GLAD YOU CAME.

I THOUGHT I WOULD SLUM IT THIS WEEKEND.



WE NOW ENTER THE LOW DENSITY "SUBURBS" WHERE WE LOVE OUR CARS - AND OUR COFFEE. ANYONE NEED A TOP OFF BESIDES ME?

WHERE 3,000 SQUARE FEET HOUSE 3 PEOPLE - BUT COULD HOUSE 3 FAMILIES.

REALLY?

AW YOU GUYS! NIKKI WOULD BE SO PROUD.



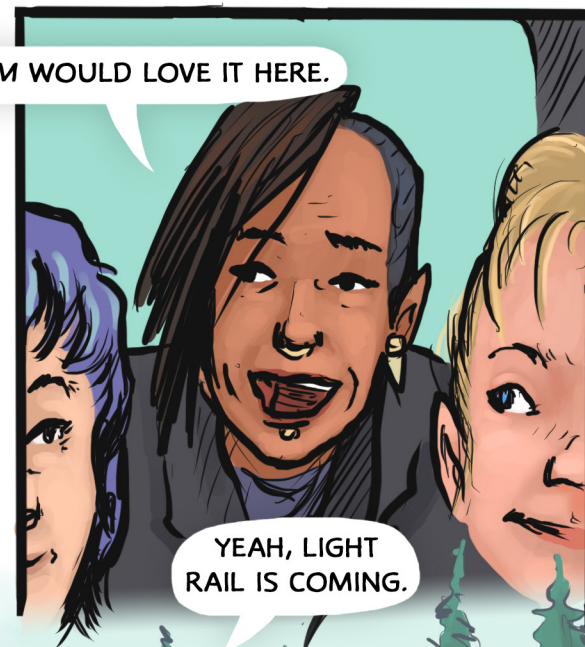
I CAN'T BELIEVE THE PROGRAM'S ALMOST OVER!



WE REALLY GOTTA WORK ON OUR PROJECT.



MY MOM WOULD LOVE IT HERE.

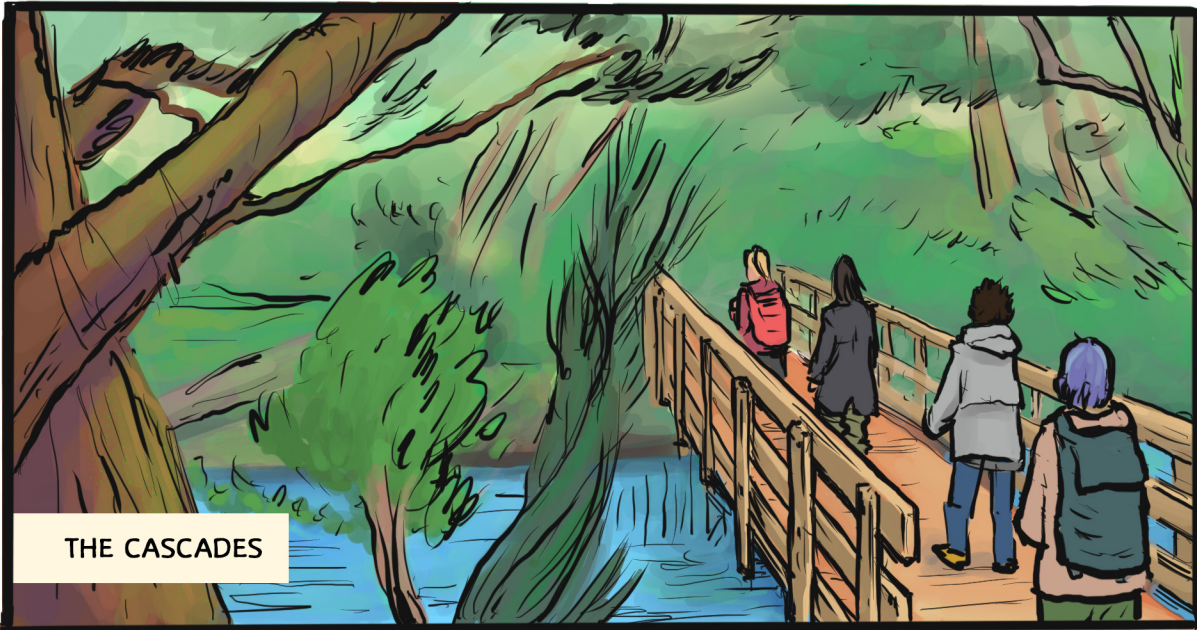


YEAH, LIGHT RAIL IS COMING.

CAMPING IS GOING TO BE FUN?

OH YEAH! PLUS BEN HAS GREAT GEAR.





THE CASCADES



I'VE BEEN INSENSITIVE ABOUT CITY LIFE.

AT THE COMMUNITY MEETING, I SAW THE DEVELOPER'S OPPORTUNITY TO SCORE BIG. I DIDN'T THINK ABOUT ALL THE OTHER PARTS.



SORRY I BLEW UP AT YOU AT IVAR'S. THAT WASN'T FAIR.

IT'S OK. YOU'RE KINDA RIGHT. I NEVER THOUGHT ABOUT THE ROLE MY FAMILY'S PLAYING IN HOW THE CHELAN VALLEY IS CHANGING.

AT LEAST YOU THINK IT'S A GREAT PLACE. I DO TOO!



THAT'S JUST IT. EVERYONE JUST THINKS ABOUT THEMSELVES.

PROBABLY THINGS WILL CHANGE WHERE I LIVE TOO. I JUST NEVER THOUGHT ABOUT IT BEFORE.



WE NEED A LONGER VIEW. WE NEED BALANCE FOR HOUSING, JOBS, NATURE... WHOEVER MAKES DECISIONS NEEDS TO REMEMBER THAT.



SOUNDS LIKE YOU OUGHT TO BE ONE OF THE PEOPLE MAKING THE DECISIONS.



I USED TO THINK TECH COULD SOLVE CITY DESIGN. THERE ARE SO MANY INTERCONNECTIONS.

DON'T FORGET TO INCLUDE LOW-INCOME HOUSING IN YOUR SMART CITY SO WE CAN STILL BE FRIENDS!

GOOD POINT! MOST ALGORITHMS WOULDN'T ACCOUNT FOR US MEETING.

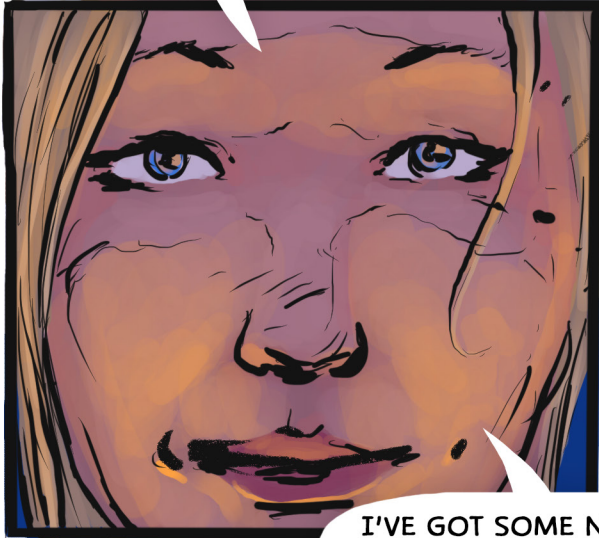
BE SURE WHAT'S PROTECTED NOW STAYS PROTECTED. EVEN IF I CAN'T LIVE ON THE CREEK I STILL WANT TO BE ABLE TO GO THERE.



THIS ISN'T JUST A PROJECT. THIS IS US.

THE WHOLE STATE IS GOING TO HAVE TO WORK TOGETHER.

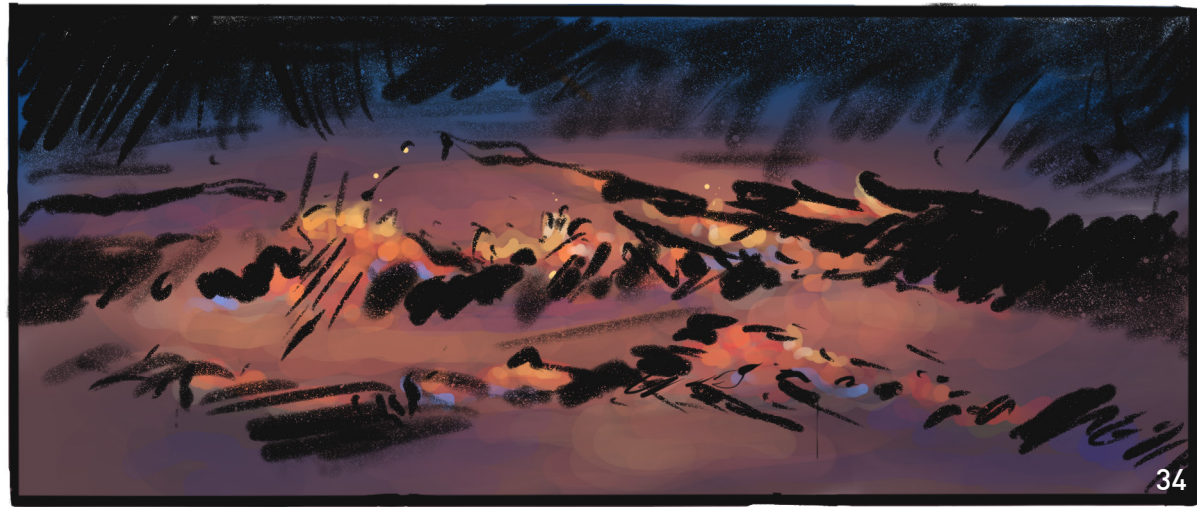
YEAH. AND WE'D DO IT BETTER THAN IT IS NOW.



I'VE GOT SOME NOTES FOR OUR PRESENTATION. I THINK DANIEL SHOULD PRESENT.

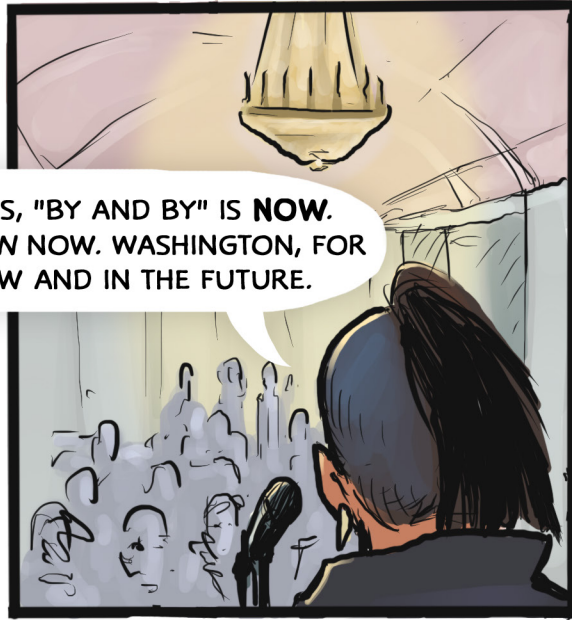


AGREED!!





FOR TEENS, "BY AND BY" IS NOW. WASHINGTON NOW. WASHINGTON, FOR ALL, NOW AND IN THE FUTURE.



DANIEL, THAT WAS AWESOME!!



HEY, I'M CONNECTING WITH TEENS FROM THE COMMUNITY MEETING. WANT TO COME?

FIRST THING - GOING TO THE NEXT COUNTY PLANNING COMMISSION MEETING!



WHAT ARE YOU GOING TO DO WHEN YOU GET BACK?



WE'RE DOING THIS AGAIN NEXT YEAR, RIGHT?



YOU BET WE ARE!

COMMUNITY PLANNING 101

1 PAY ATTENTION

GET & STAY INFORMED:

- OBSERVE YOUR SURROUNDINGS
- NOTICE CHANGES
- KNOW YOUR OFFICIALS
- DIG DEEPER FOR THE HISTORIES
- SIGN UP FOR NEWS UPDATES
- FOLLOW ISSUES YOU CARE ABOUT



2 GET INVOLVED

CONNECT WITH THE COMMUNITY:

- JOIN A YOUTH COUNCIL
- FIND COMMUNITY GROUPS
- VOLUNTEER!
- BE A HELPER
- FOLLOW ON SOCIAL MEDIA
- SHOW UP FOR EVENTS / MEETINGS



3 SPEAK OUT

PRO TIPS FOR SPEAKING YOUR MIND:

- PREPARE YOUR THOUGHTS
- WRITE IT DOWN!
- PRACTICE IN THE MIRROR OR WITH FRIENDS
- JUST GO! SHOWING UP IS 95% OF IT
- SPEAK YOUR TRUTH TO EVERYONE
- SHARE YOUR VOICE IN CREATIVE WAYS (WRITING, VIDEO, MUSIC, ART)



4 PURSUE PASSION

PATH TO BECOMING A PROFESSIONAL PLANNER:

- LEARN MORE ABOUT PLANNING
- RESEARCH CLASSES, CAMPS, PROGRAMS
- GET AN INTERNSHIP IN PLANNING
- CHECK OUT THE APA WEBSITE: WWW.PLANNING.ORG



by: Jenna
DANIEL
Cricket / Ben

WASHINGTON BY AND BY
A Community Planning Graphic Novel
By Gabrielle Lyon, Devin Mawdsley, Kayce Bayer
For the Youth in Planning Taskforce of the WA APA
www.washington-apa.org/youth-in-planning
#WashingtonByandBy

♥ WALPers
2019

STORY BACKGROUND

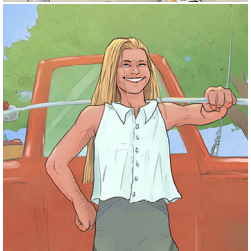
Washington, By and By, follows the adventures of four teens from around Washington brought together by “WALPers” (Washington Leaders in Planning), a two-week summer program in Olympia about planning and youth involvement.



Cricket, the daughter of property caretakers near Chelan, is an avid nature lover. The morning she departs for camp, Cricket learns devastating news: her family is selling their home. The mobile home they live in isn't worth much, but the property, set on land near a beautiful lake, has taken on new value as the area becomes ripe for development.



Daniel, a city-loving Tukwila resident with strong ties to his Quinault tribal community, is a keen observer, artist, and skeptic. He believes acknowledging the state's past is critical but it's not until he argues with his new friends does he realize his voice could help shape the future.



Jenna is a 5th generation apple farmer from the Yakima Valley. She has an economist's eye on housing and development issues and is an avid note-taker. When she realizes some of the issues the team is debating might also be happening on her own family's farm she is forced to reconsider what “home” means.



Technophile **Ben** opens his heart and home in Redmond to his new friends. When he realizes Cricket's dilemma might have been created, in part, by his own family's activities, he's forced to ask himself what his values might mean for other people's lives - and how he can put his skills to use.

Over the course of the story we learn about the places the characters are from through their eyes. The teens get to know Olympia, take the train to Seattle, visit the Wing Luke Museum, sit in on a community meeting, encounter teen activists, and hike and camp in the mountains. As the team works to help Cricket reconcile with the changes happening in her life, they also come to realize that “Washington, by and by,” really means “Washington, now. The Washington WE want.”

QUESTIONS TO CONSIDER

1. On page 12 Jenna says, “I never realized everything is planned. Even where my farm is allowed to be.” Daniel comments, “Is there a public process? They say so, but how does anyone ever hear about it?”
Why does planning matter?
2. Cricket is upset about having to move away from her childhood home in Chelan (pages 13-14). Development in the area has put increasing pressure on landowners to sell their property. Chelan is changing, and Cricket feels like she is losing a part of herself. Daniel says on page 14, “It's like gentrification...in the country.”
What does Daniel mean? Have you or your family experienced displacement? Or do you know someone who had to move because of new development in their area? What happened?
3. Over the weekend the team is given a homework assignment to gather pictures of where they live and explain how planning is a factor (pages 15-18). Professional planners work to make neighborhoods, cities, regions and states livable by developing regulations for how land is used and creating long range plans for transportation, water use, housing, environment, preservation and sustainability.
Look carefully at each of the pictures on pages 15-18. How are they similar? What things are different? How might planning have shaped what you see?
4. When the team goes to the Wing Luke Museum in Seattle they visit exhibits on redlining and historic hotel rooms used by early Chinese immigrants (page 22). Jenna remarks, “These rooms are really small.” When Daniel responds, “Don't YOU have workers? Ever been to their houses?” he is suggesting that the housing conditions for immigrant Chinese workers in the early 20th century are connected to housing for workers on Jenna's apple farm.
Do you think this is a fair question? Housing comes up throughout the story. Why is housing such a big issue?
5. Community planning is an approach intended to ensure all members of a community are involved and represented in decision-making processes. At the community planning meeting at the public library (page 24), Cricket comments, “No one is listening to each other.”
Why are people upset in this meeting? What are some of the different viewpoints? What do the teen presenters want planners to consider? Do you think community planning is important? How could this meeting have been run differently to ensure all voices were heard?
6. After the community meeting the team discusses what they heard while walking along the Seattle waterfront (page 27-28). When Ben expresses support for the call to protect green space Cricket responds, “I don't understand why you're so vehement about green space HERE?! You're building a second home on green space in Chelan.”
Why is Ben's comment so upsetting to Cricket? How would you feel if you were Ben? How would you feel if you were Cricket?
7. On page 35, Daniel closes the team's final presentation with the statement, “For teens, ‘By and By’ is NOW. Washington NOW. Washington, for all, now and in the future.”
How should people balance issues now with issues that will come up in the future? What is the role and responsibility of youth in shaping where they live - and where they might live in the future?
8. At the end of the story (page 35) Ben asks, “We're doing this again next year, right?”
Do you think the group will stay in touch? How do you think Jenna, Ben, Daniel and Cricket were changed by their experiences in WALP'ers?

ABOUT THE AUTHORS



GABRIELLE LYON is an educator, activist and writer with a focus on developing programs and spaces that enable participation by populations underserved by traditional design approaches. Gabrielle led the *Washington, By and By* project including managing the community-design process to develop a stakeholder-informed design brief; serving as the artistic director, writing collaborator and editor. This is her 2nd graphic novel project. Lyon earned her BA and MA in History from the University of Chicago and her PhD in Curriculum Studies from the University of Illinois at Chicago. She lives in Chicago where she is a mom to Arlo and Ava. She serves as the Executive Director of Illinois Humanities and is a proud member of City Open, an organization that unites planners and community members. Follow her online at [@LyonGabrielle](#).



KAYCE BAYER is an artist educator and designer in Chicago. She earned her MFA in Studio Art from Memphis College of Art in Tennessee. Kayce led the visual and historical research for *Washington, By and By*, kept us organized (no small feat) and was a writer and editor. She was also responsible for color and final design work for publication. Her creative practice is varied - working across media and collaborating with artists, writers, musicians, and community members - exploring personal narrative, histories, and art experience outside of institutional spaces. Kayce has over 15 years experience as an arts and design educator, currently grounded by her work with teens at ChiArts. www.kaycebayer.com



DEVIN MAWDSLEY is a Chicago-based creative designer working at the crossroads of UI/UX and illustration. He earned his MFA in Studio Painting at Indiana University, Bloomington, Indiana. Devin was responsible for the pencil and ink work for *Washington, By and By* along with character and story development. Devin established **Eyes of the Cat Illustration Studio** to harness the power of narrative and help raise collective consciousness in troubled times, telling stories by and for the people. He is an avid student of language, with a BA in Chinese, and work experience in interpretation and translation. Devin teaches at ChiArts, Chicago's public arts high school. www.devinmawdsley.com | www.eyesofthecatillustration.com

The Lyon, Bayer and Mawdsley team worked with Gwen Rousseau, Shane Hope and Steve Butler, co-chairs of the **Youth in Planning Taskforce of the Washington Chapter of the American Planning Association**, a volunteer-led committee of professional urban planners who commissioned *Washington, By and By*.

ABOUT THE YOUTH IN PLANNING TASKFORCE

“We believe youth provide unique and fresh ideas to the dialogue on creating great places.”

The Youth in Planning Taskforce aims to raise youth awareness of the importance of their voice in forming our future. We work to provide resources for teachers, planners, and public officials to engage youth in planning processes that generate lasting value and provide meaningful opportunities for youth to engage in making their local communities better places for all. The Taskforce is one of the standing committees of the Washington Chapter of the American Planning Association serving planners across Washington state.

Learn more about the Youth in Planning Taskforce of the APA-WA: www.washington-apa.org/youth-in-planning

READER'S TOOLKIT

About the *Washington, By and By* Toolkit:

Washington, By and By is accompanied by a free online toolkit available at <https://www.washington-apa.org/youth-in-planning>.

The toolkit includes a set of resources to help planners, teachers and librarians use *Washington, By and By* as a jumping off point for fostering youth involvement in planning.

HOW TO GET INVOLVED

Contact your city or county Planning Department

www.wacities.org/about-us/our-281-cities-and-towns/member-cities (for cities)

Join or start a Youth Council

www.bit.ly/317pAau

RESOURCES

American Planning Association

In Your Community:

www.planning.org/communityoutreach/

Teaching Young People about Planning:

www.planning.org/educators/

Video: "The Future Belongs to Those Who Prepare For It":

www.bit.ly/2GC2Wzb

American Planning Association-Washington Chapter

www.washington-apa.org/ (general website)

www.washington-apa.org/youth-in-planning (youth in planning webpage)

WA State Department of Commerce - Growth Management

www.commerce.wa.gov/serving-communities/growth-management/

Municipal Research and Services Center (MRSC) - Explore Topics

www.mrsc.org/Home/Explore-Topics.aspx

Association of Washington Cities - Data and Resources

www.wacities.org/data-resources

Puget Sound Regional Council

www.psrc.org/

Center for Architecture and Design, Seattle

www.cfadseattle.org/

Stewart, Jill, et al. *Planning the Pacific Northwest*. Routledge, 2015.

ACKNOWLEDGEMENTS

From the Authors

We would like to thank a few people who have made this work possible through their inspiration, support, and labor. Thank you especially to Youth in Planning Taskforce for picking us for this project and believing we could pull it off. Special thanks goes to **Owen Oliver** and **Stephanie Velasco** for gifting us with your stories and affirming our narrative as it unfolded. Thank you to the young people in our lives who remind us to reimagine the future and shape the world as we want it to be!

From Gabrielle ~ Thanks **Ava, Arlo** and **Josh** for being as excited as I was to have the chance to work on another graphic novel. **From Kayce** ~ Thank you, **Chris**, for holding down the fort and caring for **Otis** (with a healthy dose of comic book reading!) while I fervently colored. **From Devin** ~ Thank you, **Nina**, for your continual patience, love and understanding.

From the WA-APA

Young people! They are the foundation of our future.

How can we attract and empower them to understand the civic process and become engaged in shaping their communities in ways that will make our world better? How can we reach out to a diverse generation that is coming of age and show them that planning is interesting and tangible? As a planner, I've wondered about these questions for a long time. I'm grateful to have been part of this project that provides an innovative approach to engaging teens (along with the "young at heart").

Washington, By and By will help readers make sense of community planning — not as a set of statistics and maps, but as a well-illustrated story to which people can relate and see where they fit in. This graphic novel encourages readers to examine some critical questions about growth management: How does planning happen? Why does it matter? What is the role and responsibility of youth in shaping where they live — now and in the future?

While some of the novel's themes relate specifically to Washington's growth management framework, most parts of the process would apply to community planning that happens in every state. Understanding the public planning process — along with the issues at hand — is fundamental for anyone to be engaged effectively. I also think the graphic novel approach to exploring planning issues will be useful for people of all ages, including those for whom English is not their first language.

This initiative has been made possible by the energy and vision of key American Planning Association-Washington Chapter (APA-WA) members and support from the chapter's leadership and its Youth in Planning Task Force. Their efforts led the chapter to commission *Washington, By and By* for development by Gabrielle Lyon, Devin Mawdsely, and Kayce Bayer. The creative team's exceptional talent, creativity and passion for putting youth at the center are what make this book an engaging tool for educating youth about their ability to influence real decisions affecting their community. We greatly appreciate their devotion of time and talents to this project.

A special thanks to the many Washington planners who participated in our design brief workshop and survey enabling the creative team to capture the essence of planning in Washington state. Also, a big thank you to all our backers in our Kickstarter campaign. Your support provided the foundation for finalizing the novel and building a strong community for moving this novel forward.

The APA-WA Youth in Planning Taskforce's goal is to have the graphic novel used by teachers in civic courses that will be taught in our state at the high school level and to encourage other youth-oriented organizations to use it as well.

I'm excited to see how this project unfolds. I hope it helps to inspire many other communities and planning organizations to achieve meaningful public engagement and successful planning outcomes.

Shane Hope, AICP

Development services director for Edmonds, Washington,
and the former vice-president of APA's Washington Chapter.

ALKI

THANK YOU TO OUR SUPPORTERS!

Washington, By and By was made possible thanks to the generosity of many people who supported our Kickstarter campaign. The campaign includes a great video featuring Washington Planners Gwen Rousseau, Owen Oliver and Stephanie Velasco and highlighting places featured in the novel. Check it out at bit.ly/WashingtonByandBy. Thank you backers!

REGION

Steve Butler

COUNTY

Andrea Garfinkel-Castro
 Bob Hirsch
 Brian Bauman
 Chaz
 Donald Miller
 Guest 1742338967
 Gwen Rousseau
 Heather McCartney FAICP
 Jacqueline A. Reid, AICP
 Jerry Sudee
 Jill Sterrett
 Jose and Alma Velasco
 Josh Fox

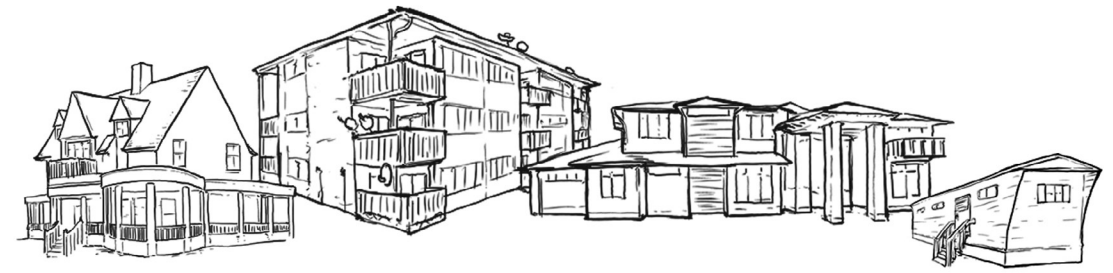
Kamuron Dennis Guro
 Karen Wolf
 Kris Torkelson
 Matt Knoepke
 Nancy Lyon
 Oscar Newman
 Paul Inghram
 Rebeccah Maskin
 Rick Sepler, AICP
 Ryan and Stacey Richey
 Shane Hope
 Therese Calgary
 Valerie Mawdsley

CITY

Adam Hecktman
 Adam Rosa
 Andy Meyer
 Ava & Arlo Lyon-Sereno
 Ben Bakkenta
 Ben Shumaker
 Bernard Loyd
 BJ Shea
 Cynthia Cheski
 Debbie Lacy
 Donna deBit

Dr. Anthony Paulson
 Elle Ramel
 Ellen A.
 Gigi The Planner
 Jen Cannon
 Jenn Yoo and Patrick Miner
 Jenna, Nelson & Tilda Trautman
 Joe Germuska
 Joe Tovar
 Major Taylor Project
 Michael A. Welch

Mike Davis
 Patricia Conner
 Ryan Kennedy
 Ryan Noakes
 Seth Schromen-Wawrin
 Shelley Bolser
 Sylvia B. Mendoza
 T. Fehr
 Tim and Liz Conner



NEIGHBORHOOD

Abril Vela
 Amanda Yamaguchi
 Aurélie Segura
 Brian J. Lawrence
 Depth and Light
 Elizabeth Iaukea
 Erin Ollig
 Esther Lee
 Frank Muraca
 Steven M Cohn
 Heather Hedlund
 Jeff Solin

Jennifer Sutton
 Jon Mastrude
 Karen Sherwood
 Kate Calabra
 Katie Bunge
 L. Nieman
 Lauren Moore
 Lucinda Rogers
 Meg Sudler/Situations Studio
 Melissa Shumake
 Michael J Hintze
 N. Faghin

Nancy Eklund
 Nick Welch
 Paula Wiech
 Peter Westhagen
 Raphael Lyon
 Sana Jafri
 Sara Lovett
 Sendhil Revuluri
 Taylor Jones
 Veronica Guenther

COMMUNITY

Aaron Griffin
 Alex Comeau
 Alice Okumura
 Andrew Huff
 Anne Griffin
 Benjamin Stokes
 Brennon Staley
 Brianna Blatchley
 Brooklyn Holton
 Bryan Clark
 Building Matters Ann Arbor
 Chris Steckler
 Daniel Rende

David Henning
 Donnell Allan
 Eiko Tubridy
 Erika Bartlett
 Galen Herz
 Gardner R. Smith
 Gia Biaggi
 Guest 1060065944
 Jaynie Schultz
 Jen Masengarb
 John Shaw
 Katy Haima
 Kirsten Tilleman

Lindsey Conklin
 Linnea Graffunder-Bartels
 Martha Pidcock
 Melissa Johnston
 Michael de Lange
 Miguel
 Mychal Ludwig
 Omar Rodriguez
 Paul Ryan
 Robin Long
 Scarlet Ponder
 Shawn Smith



