

PARTS LIST
AE-830
Electronic Typewriter

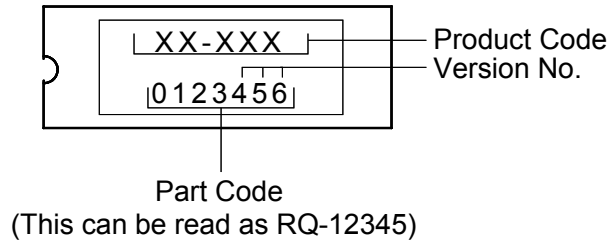
EDITION 3
NOV. 2004
001-03165-03

PREFACE

1. This parts list is used to order parts required for the electronic typewriter.
2. The part code for the ROM including version number is printed on the protection label as illustrated below.

Be sure to use same part code for compatibility when ordering parts.

Example:



3. The Classified mark is printed on the control PCB as illustrated below.
- Be sure to use the same classified mark for compatibility when ordering parts.

Example:

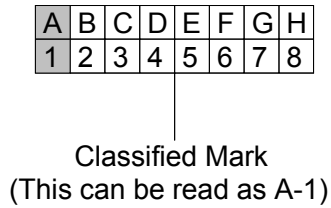
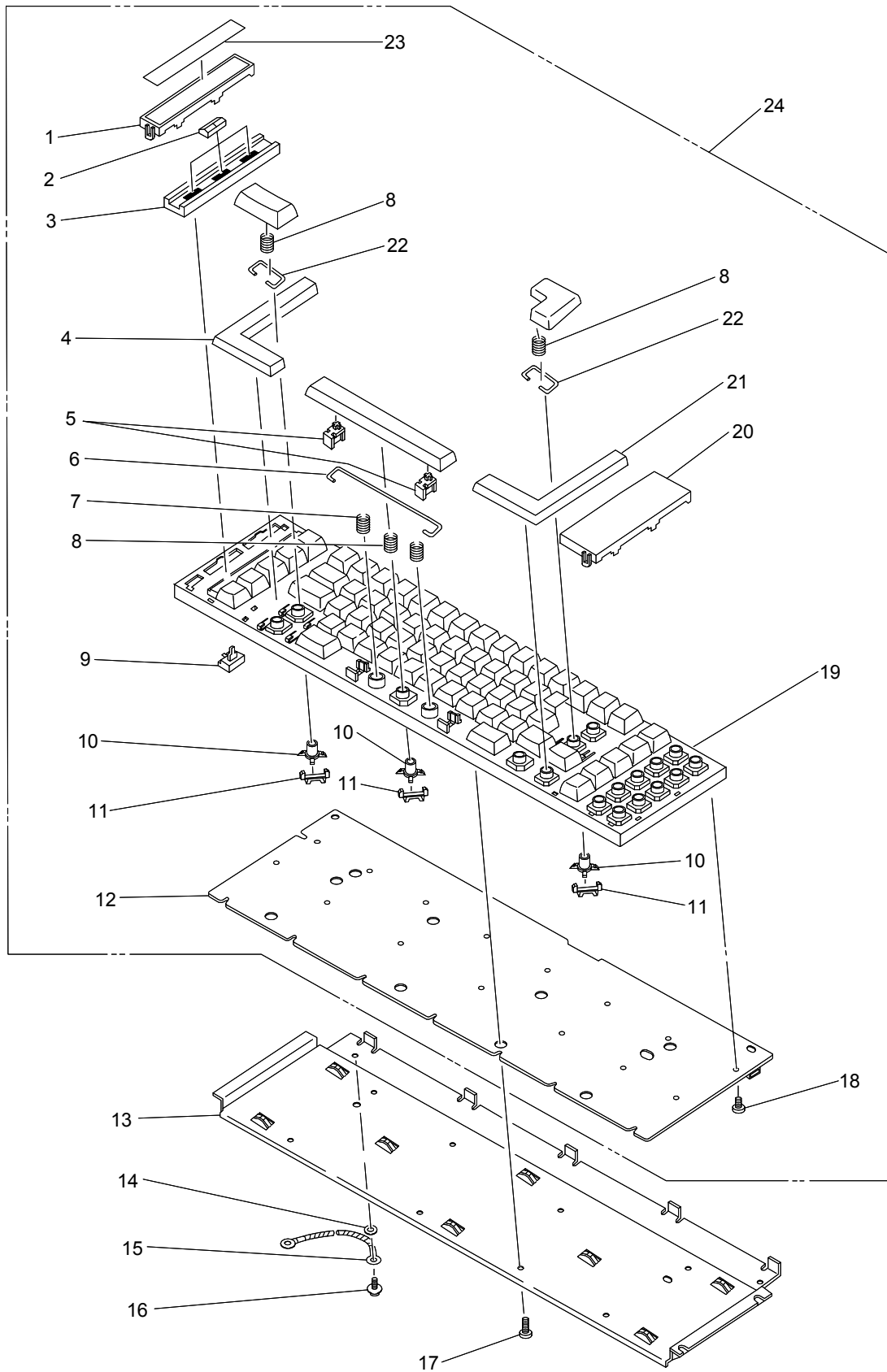


TABLE OF CONTENTS

KEYBOARD ASSEMBLY	1
PAPER FEED MECHANISM	3
CARRIER DRIVE MECHANISM	5
CARRIER DRIVE FRAME	7
RIBBON BASE MECHANISM	9
RIBBON DRIVE	11
PRINT HEAD & FRONT PLATE MECHANISM	13
HOUSING	15
POWER SUPPLY	17
ACCESSORIES	19
NOISE FILTER PCB & CARRIER PCB	21
DRIVER PCB ASSEMBLY	23
CONTROL PCB FOR INITIAL MODELS	27
CONTROL PCB FOR SECOND MODELS	31
CONTROL PCB FOR THIRD MODELS	35
PACKING	39

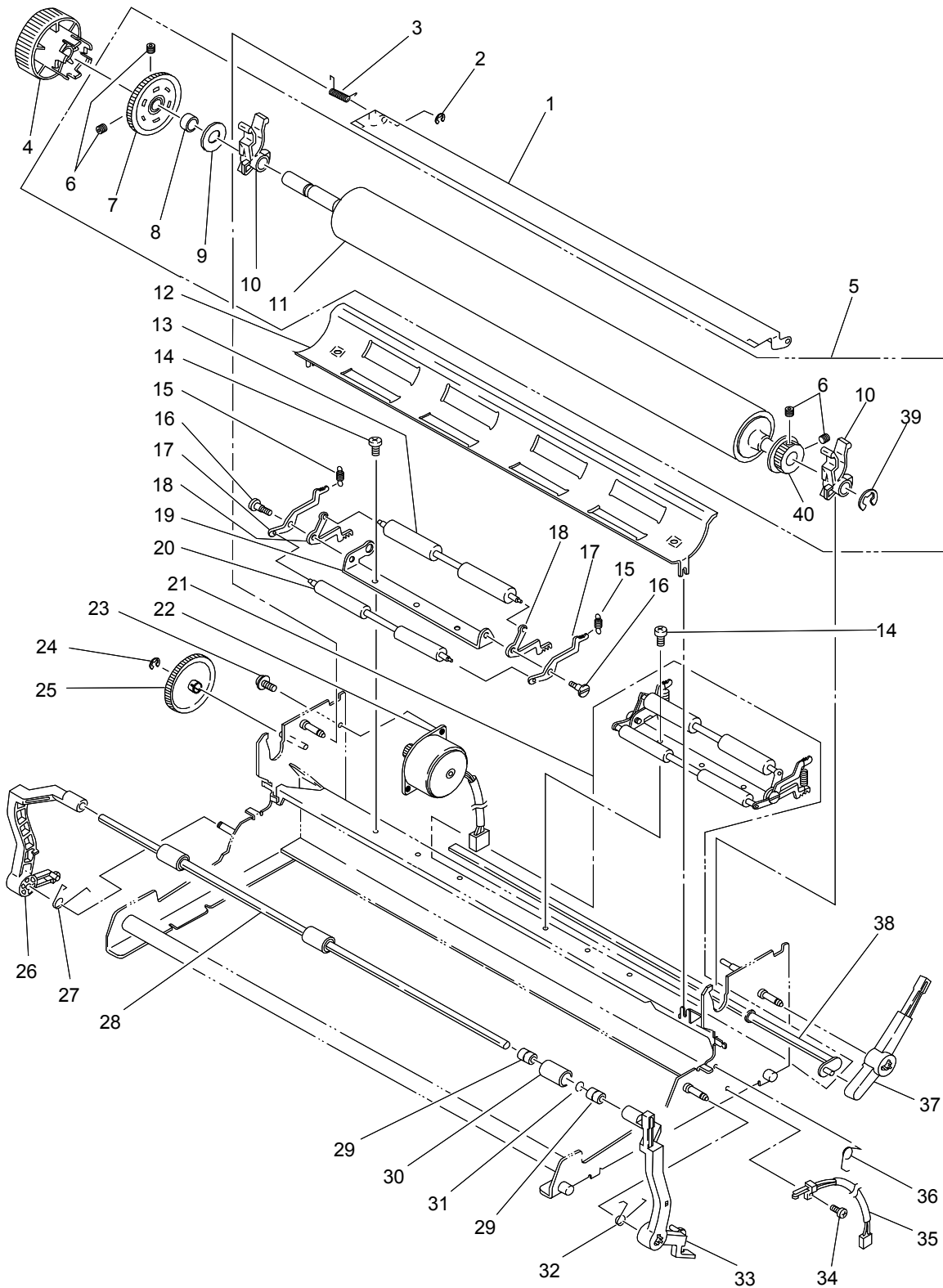


**FUNCTIONAL
GROUP NAME**

KEYBOARD ASSEMBLY

MODEL AE-830

REF. NO.	PART CODE	Q'TY	DESCRIPTION
1	H00-40020-45	1	KEYBOARD SPACER A
2	H00-40060-45	1	SLIDE KEY CAP
3	H03-40070-45	1	SLIDE KEY HOUSING
4	H00-40040-45	1	KEYBOARD SPACER C
5	H00-40190	2	KEY CAP HOOK
6	H00-40170	1	CRANK SHAFT (LARGE)
7	H00-40140	2	SPRING
8	H00-40130	68	SPRING
9	H00-40160	3	SLIDE SWITCH
10	H00-40100	68	KEY STEM
11	H00-40120	68	CONTACT RUBBER
12	H00-42000	1	KEYBOARD PCB ASSEMBLY
13	H00-40090	1	PANEL GUIDE
14	001-05510	2	SPRING WASHER
15	355-32237	2	WIRE EARTH LEAD ASSEMBLY
16	551-10040	2	SCREW M3.0 X 5
17	680-00170	8	SCREW M3.0 X 6
18	400-44110	22	SCREW M2.0 X 5
19	H00-40250	1	KEYBOARD PANEL
20	H00-40030-45	1	KEYBOARD SPACER B
21	H00-40050-45	1	KEYBOARD SPACER D
22	H00-40180	2	CRANK SHAFT (SMALL)
23	H00-40230	1	FUNCTION SHEET
			KEYBOARD UNIT WITH ON LINE
24	KTB-22013-45	1	USA
	KTB-22082-45	1	HISPANO 3
	KTB-22074-45	1	NEW CANADIAN-FRENCH
			KEYBOARD UNIT WITHOUT ON LINE
24	KAC-62016-45	1	USA
	KAC-62014-45	1	HISPANO 3
	KAC-62021-45	1	NEW CANADIAN-FRENCH
	KAC-62021-45		

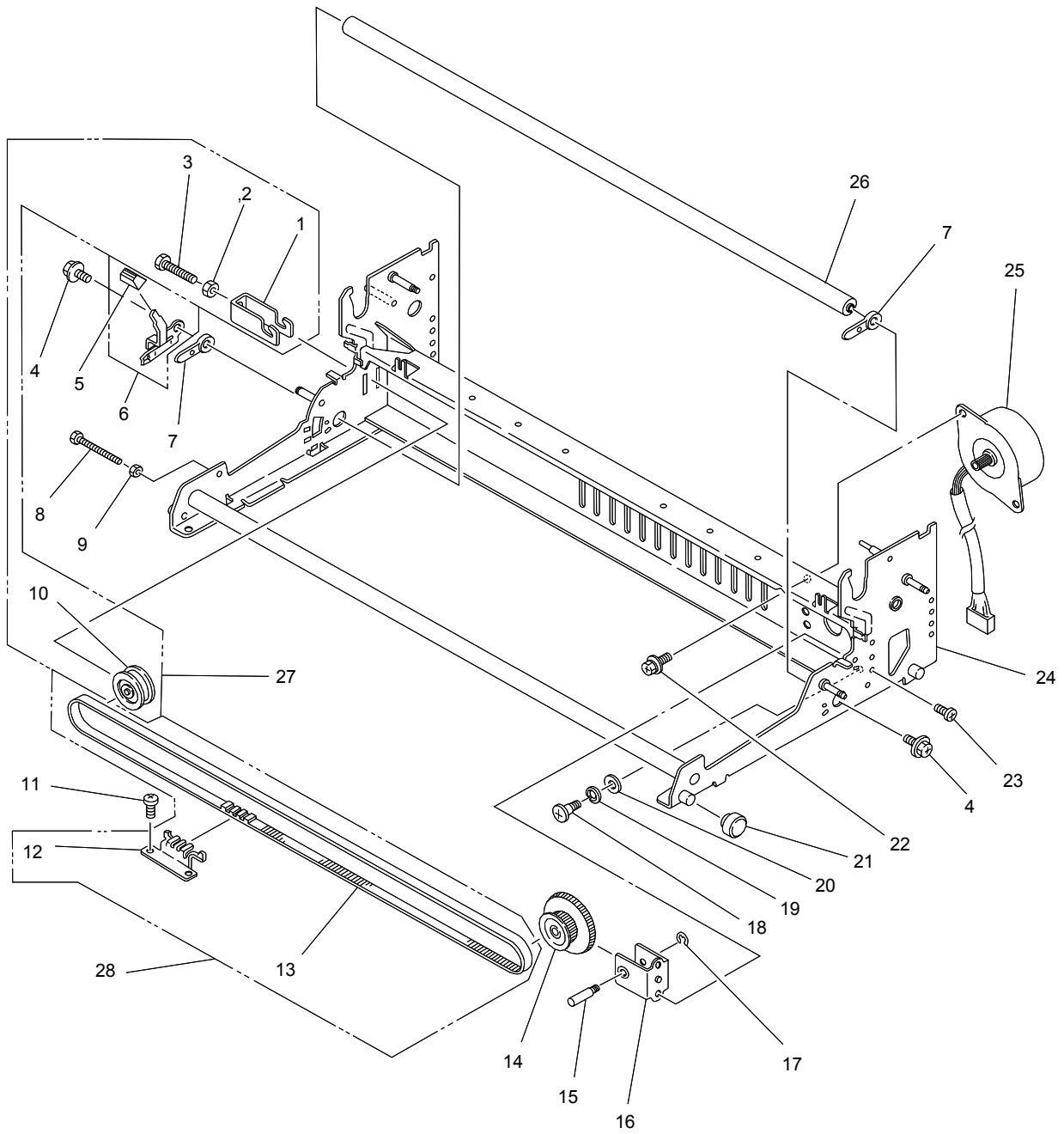


**FUNCTIONAL
GROUP NAME**

PAPER FEED MECHANISM

MODEL AE-830

REF. NO.	PART CODE	Q'TY	DESCRIPTION
1	H00-66115-01	1	ERASURE ASSEMBLY
2	011-02020	1	RETAINING RING D=2
3	330-61101	1	SPRING ERASE TABLE
4	H00-65050-01	1	PLATEN KNOB
5	H03-65000	1	PLATEN ASSEMBLY
6	011-00150	4	SCREW M4.0 X 4
7	H00-65030	1	PLATEN GEAR
8	H00-65060	1	PLATEN GEAR SPACER
9	330-61290	1	WASHER
10	H00-65020	2	PLATEN GUIDE
11	H00-65010	1	PLATEN
12	H00-63016	1	PAPER PAN ASSEMBLY
13	H00-63030	2	FEED ROLLER B
14	501-70200	4	SCREW M3.0 X 5
15	H00-63150	4	SPRING
16	011-30120	4	HORIZONTAL CRANK SET SCREW
17	H00-63070	4	FEED ROLLER ARM A
18	H00-63080	4	FEED ROLLER ARM B
19	H00-63060	2	FEED ROLLER BRACKET
20	H00-63020	2	FEED ROLLER A
21	H00-63000	2	FEED ROLLER ASSEMBLY
22	H00-64017-00-SA	1	INDEX MOTOR ASSEMBLY
23	551-10040	2	SCREW M3.0 X 5
24	501-70500	1	RETAINING RING D=4
25	H00-64031	1	INDEX IDLER GEAR
26	H00-66030-35	1	PAPER BAIL ARM (L)
27	H00-66110	1	PAPER BAIL SPRING (L)
28	005-42381	1	PAPER BAIL SHAFT
29	H00-66060	6	PAPER BAIL ROLLER
30	H00-66050	3	PAPER BAIL RUBBER
31	H00-66040	3	BAIL SPRING
32	H00-66100	1	PAPER BAIL SPRING (R)
33	H00-66021-35	1	PAPER BAIL ARM (R)
34	620-54010	1	SCREW M2.0 X 8
35	H00-67025	1	PAPER INJECTOR ASSEMBLY
36	H00-66120	1	BAIL ARM SPRING
37	H00-63090-35	1	PAPER RELEASE LEVER
38	H00-63105	1	RELEASE SHAFT ASSEMBLY
39	820-90010	1	RETAINING RING D=8
40	652-63256	1	ASF DRIVE GEAR

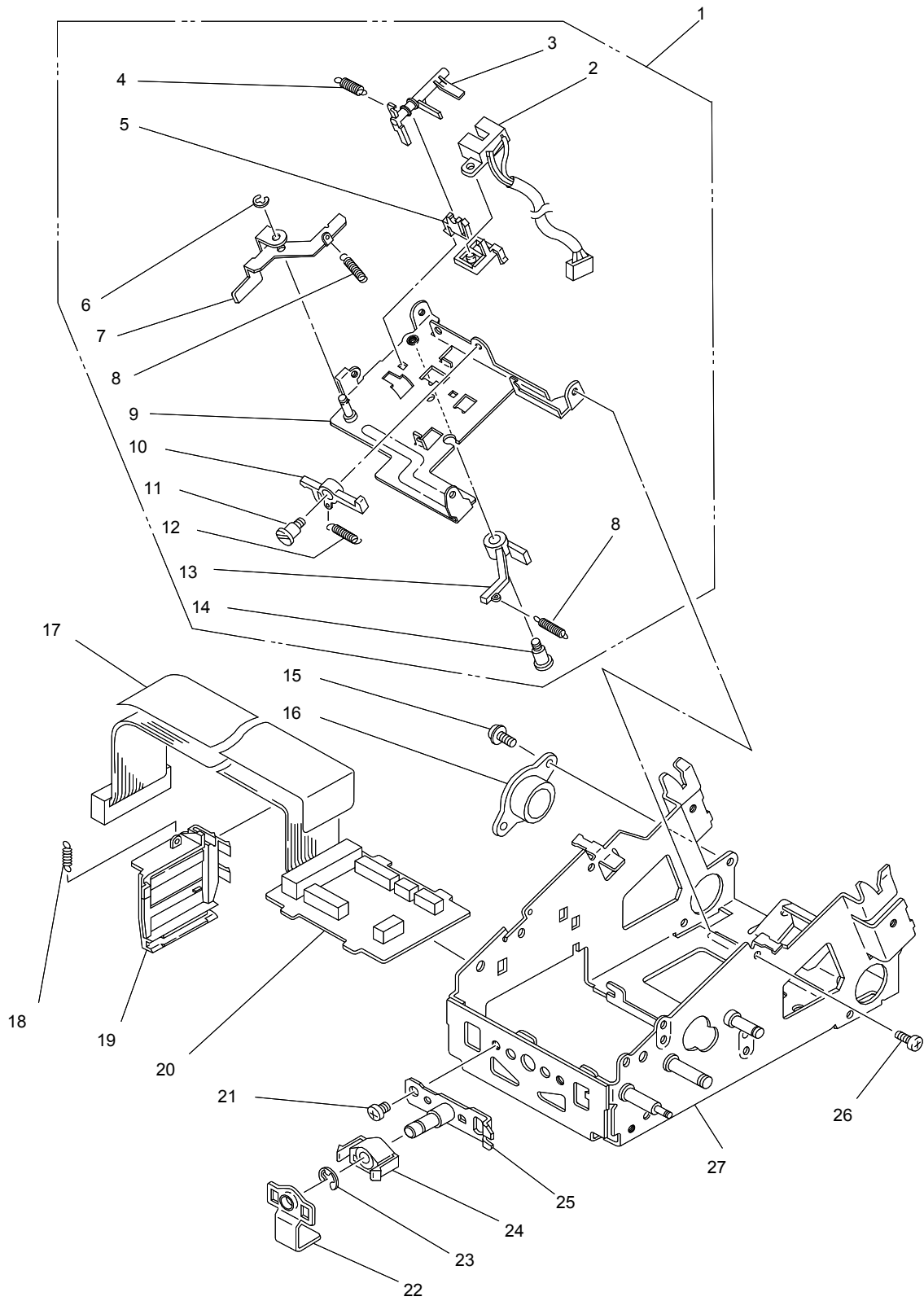


**FUNCTIONAL
GROUP NAME**

CARRIER DRIVE MECHANISM

MODEL AE-830

REF. NO.	PART CODE	Q'TY	DESCRIPTION
1	H00-62100	1	IDLER PULLEY BRACKET
2	501-70030	1	NUT M4
3	H00-62130	1	SCREW M4.0 X 16
4	H00-61190	2	SCREW M4.0 X 6
5	H00-61150-36	1	LEVER CAP
6	H00-61135-36	1	COPY DETENT LEVER
7	H00-61141	2	COPY CONTROL ARM
8	H00-61080	1	SCREW M3.0 X 25
9	011-03510	1	NUT M3
10	H00-62070	1	IDLER PULLEY
11	011-00010	2	SCREW M3.0 X 4
12	H00-62121	1	BELT CRANK
13	H00-62110	1	CARRIER DRIVE BELT
14	H00-62030	1	CARRIER DRIVE PULLEY ASSEMBLY
15	H00-62090	1	DRIVE PULLEY PIN
16	H00-62080	1	PULLEY PLATE
17	011-02030	1	RETAINING RING D=2.5
18	H00-62060	1	SCREW
19	680-00040	1	SPRING WASHER
20	100-81130	1	WASHER 5 X 10 X 1
21	H00-61090	4	RUBBER
22	330-60170	1	SCREW M4.0 X 8
23	501-70200	2	SCREW M3.0 X 5
24	H00-61000	1	CHASSIS FRAME ASSEMBLY
25	H00-62017	1	CARRIER DRIVE MOTOR
26	H00-61120	1	CENTER SHAFT
27	H00-62075	1 SET	IDLE PULLEY ASSEMBLY
28	H00-62115	1 SET	CARRIER DRIVE BELT ASSEMBLY

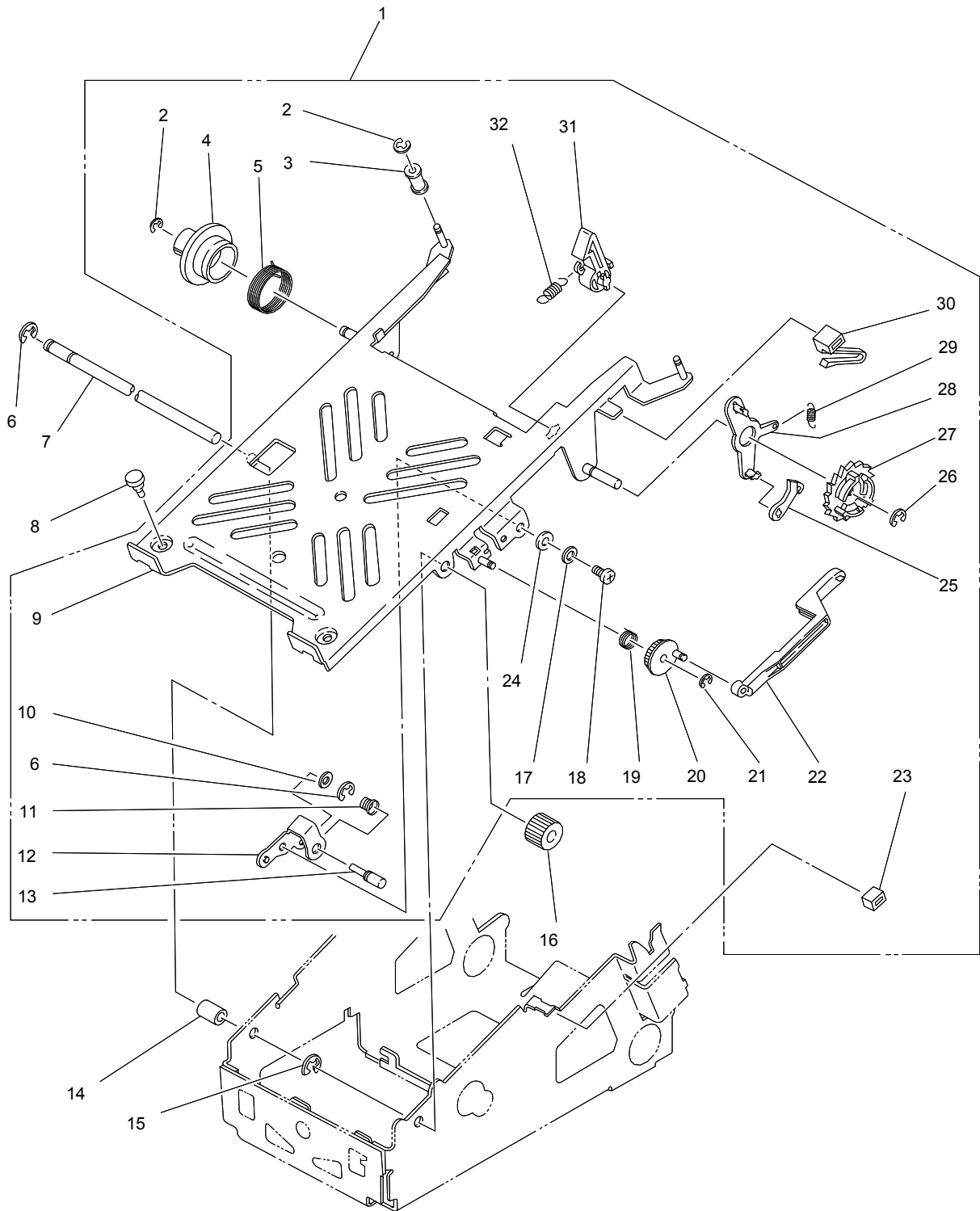


**FUNCTIONAL
GROUP NAME**

CARRIER DRIVE FRAME

MODEL AE-830

REF. NO.	PART CODE	Q'TY	DESCRIPTION
1	H00-56000	1 SET	SENSOR PLATE ASSEMBLY
2	H00-57585	1	RIBBON SENSOR ASSEMBLY
3	H00-56030	1	SENSOR ARM
4	820-70720	1	SUB HOOK SPRING
5	H00-56020	1	INTERRUPTER HOLDER
6	011-02020	1	RETAINING RING D=2
7	H00-56060	1	CARRIER SET CRANK
8	551-02050	2	SPRING
9	H00-56005	1	SENSOR PLATE ASSEMBLY
10	H00-56050	1	RIBBON SENSOR CRANK
11	H00-56080	1	SENSOR CRANK SCREW
12	011-16050	1	BACK SPRING
13	H00-56040	1	RELEASE SENSOR ARM
14	330-51850	1	SCREW A
15	H00-51220	4	SCREW M3.0 X 5
16	H00-51020	2	CARRIER METAL
17	H00-51050	1	EARTH BLADE
18	A01-55290	1	SPRING
19	H00-51040	1	CABLE HOLDER
20	H00-57005	1	CARRIER PCB ASSEMBLY
21	820-90210	2	SCREW M3.5 X 4
22	H00-51030	1	CARRIER GUIDE BRACKET
23	501-70500	1	RETAINING RING D=4
24	200-51040	1	CARRIER GUIDE
25	200-51026	1	CARRIER GUIDE BASE ASSEMBLY
26	011-00160	4	SCREW M3.0 X 4
27	H00-51015	1	CARRIER FRAME
*	H00-50000	1	CARRIER ASSEMBLY *CARRIER ASSEMBLY IS COMPOSED OF CARRIER DRIVE FRAME, RIBBON BASE MECHANISM, RIBBON DRIVE, PRINTER HEAD & FRONT PLATE MECHANISM, CARRIER PCB ASSEMBLY

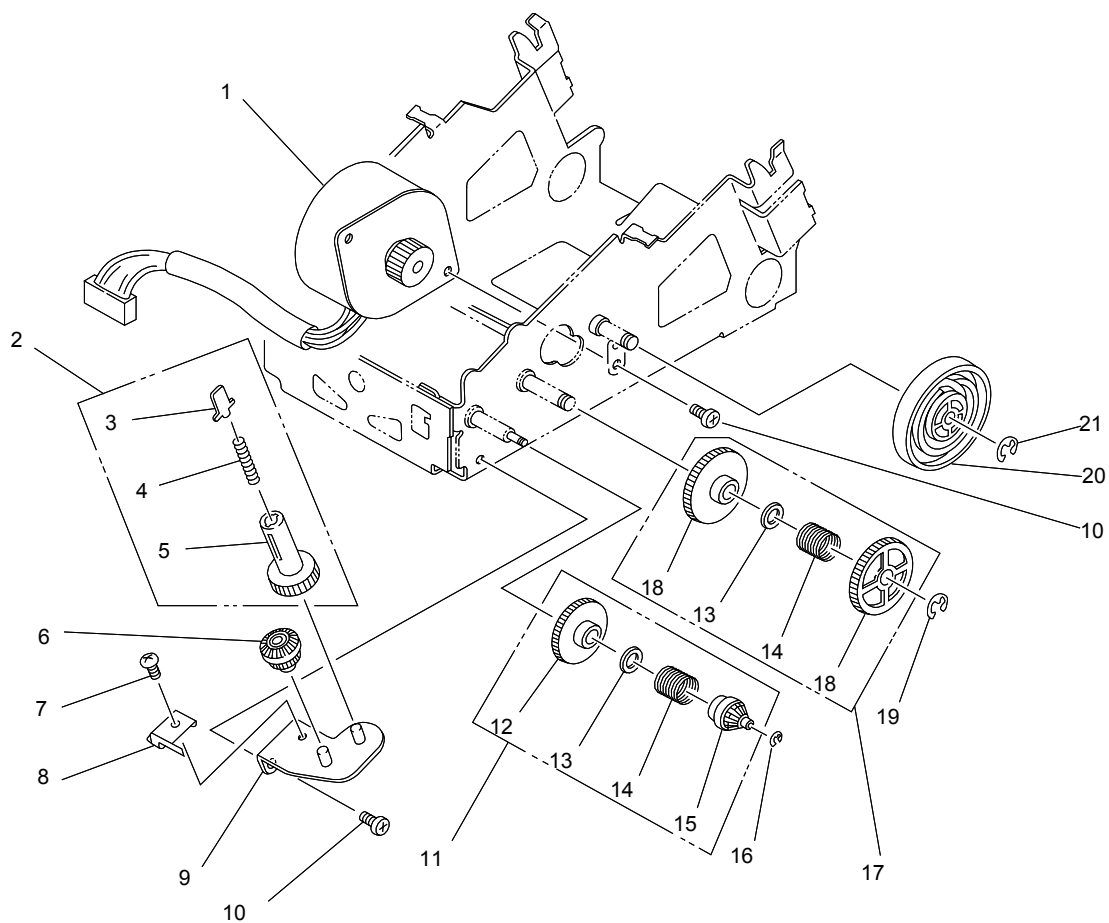


**FUNCTIONAL
GROUP NAME**

RIBBON BASE MECHANISM

MODEL AE-830

REF. NO.	PART CODE	Q'TY	DESCRIPTION
1	H00-55000-00-10	1 SET	RIBBON BASE ASSEMBLY
2	011-02020	2	RETAINING RING D=2
3	200-55030	2	CORRECT ROLLER
4	330-52041	1	CORRECT TAPE SPOOL
5	200-55160	1	BRAKE SPRING
6	011-02040	2	RETAINING RING D=3
7	H00-55090	1	BASE CENTER SHAFT
8	270-55220	2	CASSETTE BASE RUBBER
9	H00-55016-00-10	1	RIBBON BASE ASSEMBLY
10	270-55210	1	CAM FOLLOWER SPACER
11	011-19670	1	SPRING
12	200-55010	1	CAM FOLLOWER BRACKET
13	200-55020	1	CAM FOLLOWER PIN
14	H00-55110	1	RIBBON BASE COLLAR
15	H00-55190	1	BEN RETAINING RING
16	H00-55020	1	CORRECTION CENTER GEAR
17	011-05510	1	SPRING WASHER SW3
18	011-00010	1	SCREW M3.0 X 4
19	H00-55120	1	RETAINER CLUTCH
20	H00-55030	1	CORRECTION FEED GEAR
21	011-02010	1	RETAINING RING D=1.5
22	H00-55060	1	CORRECT FEED RINK
23	H00-55100	2	RIBBON BASE RUBBER
24	011-07530	1	WASHER 3 X 6 X 0.3
25	200-55060	1	CORRECT FEED PAWL
26	011-02030	1	RETAINING RING D=2.5
27	330-52030	1	CORRECT FEED RATCHET
28	H00-55040	1	FEED ARM
29	200-55070	1	SPRING
30	H00-55050	1	CORRECT RETAINER
31	H00-55070	1	RIBBON CASSETTE HOLDER
32	011-26121	1	SPRING
*	H00-50000	1 SET	CARRIER ASSEMBLY *CARRIER ASSEMBLY IS COMPOSED OF CARRIER DRIVE FRAME, RIBBON BASE MECHANISM, RIBBON DRIVE, PRINTER HEAD & FRONT PLATE MECHANISM, CARRIER PCB ASSEMBLY

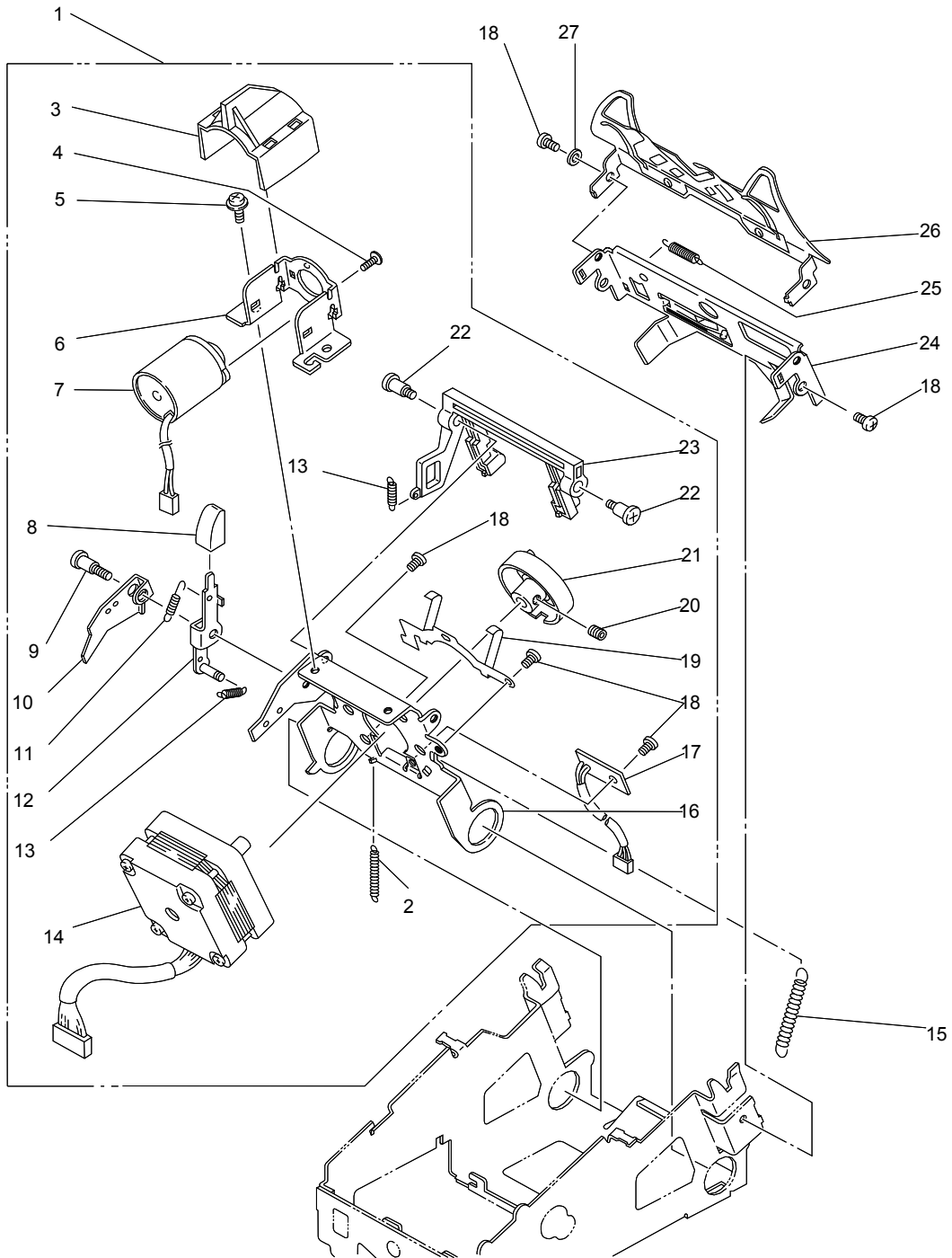


**FUNCTIONAL
GROUP NAME**

RIBBON DRIVE

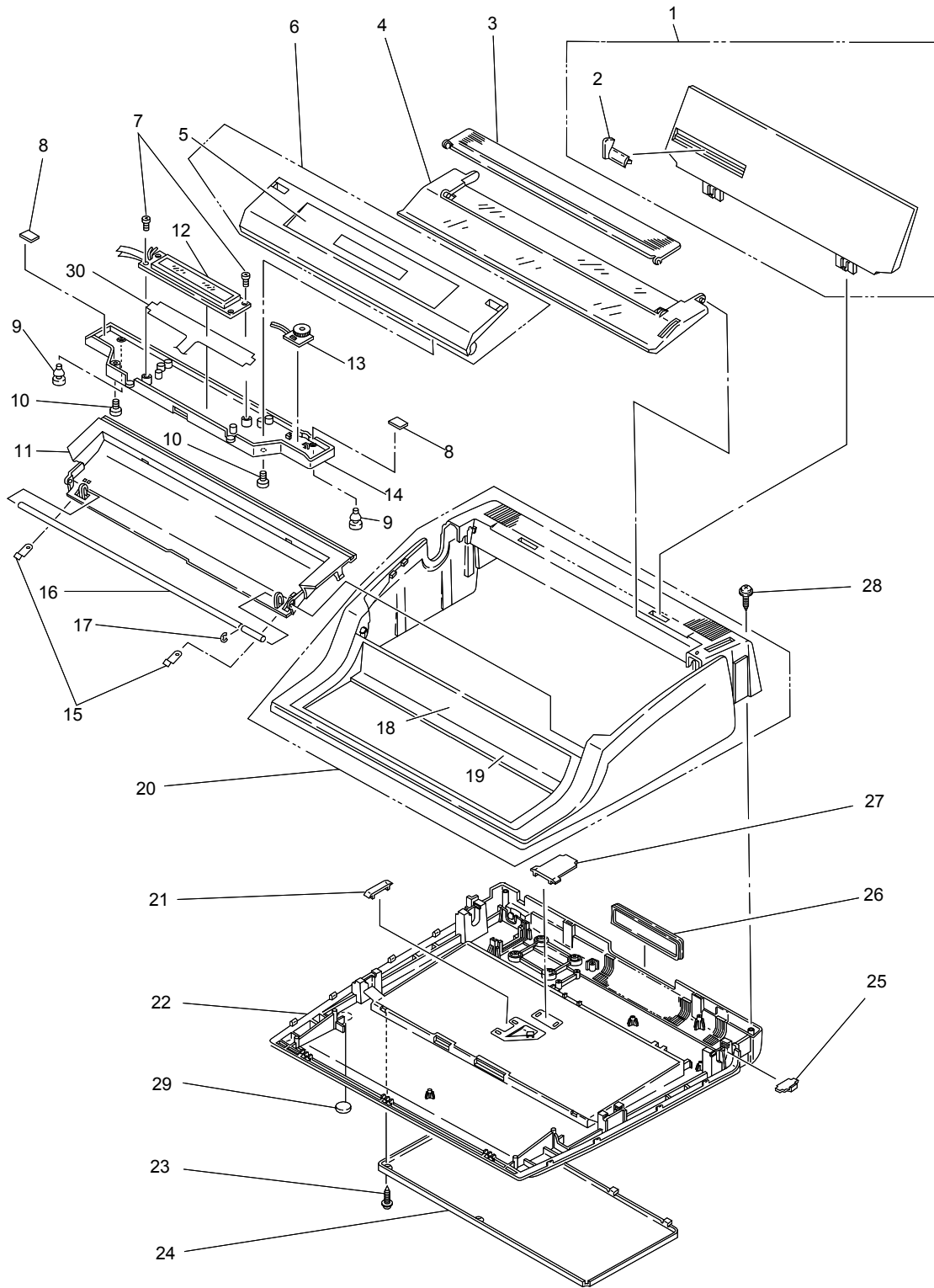
MODEL AE-830

REF. NO.	PART CODE	Q'TY	DESCRIPTION
1	H00-51066-00-79	1	RIBBON MOTOR
2	H00-51145	1	RIBBON FEED STEM ASSEMBLY
3	H00-51150	1	RIBBON FEED PLATE
4	H00-51170	1	SPRING
5	H00-51140	1	RIBBON FEED STEM
6	H00-51110	1	RIBBON IDLER GEAR
7	301-00760	1	SCREW M2.6 X 4
8	H00-51200	1	RIBBON RETAINER
9	H00-51165	1	FEED GEAR PLATE ASSEMBLY
10	011-00010	3	SCREW M3.0 X 4
11	H00-51105	1	RIBBON CLUTCH GEAR ASSEMBLY
12	H00-51100	1	RIBBON CLUTCH GEAR
13	H00-51250	2	WASHER 4.5 X 8 X 0.5
14	H00-51130	2	SPRING
15	H00-51120	1	RIBBON CLUTCH IDLER GEAR
16	011-02010	1	RETAINING RING D=1.5
17	H00-51095	1	CORRECT CLUTCH GEAR ASSEMBLY
18	H00-51090	2	CORRECT CLUTCH GEAR
19	011-02040	1	RETAINING RING D=3
20	H00-51080	1	RIBBON LIFT CAM
21	011-02030	1	RETAINING RING D=2.5
*	H00-50000	1 SET	CARRIER ASSEMBLY *CARRIER ASSEMBLY IS COMPOSED OF CARRIER DRIVE FRAME, RIBBON BASE, MECHANISM, RIBBON DRIVE, PRINTER HEAD & FRONT PLATE MECHANISM, CARRIER PCB ASSEMBLY



FUNCTIONAL PRINTER HEAD & FRONT PLATE MODEL AE-830
GROUP NAME MECHANISM

REF. NO.	PART CODE	Q'TY	DESCRIPTION
1	H00-53000-00-10	1 SET	SELECTION MOTOR BRACKET
2	H00-51271	1	SPRING
3	H00-54026	1	SOLENOID COVER ASSEMBLY
4	200-81020	2	SCREW M2.6 X 6
5	200-81060	2	SCREW M3.0 X 6
6	H00-54010	1	SOLENOID BRACKET
7	H00-54035-00-10	1	HAMMER SOLENOID
8	H00-53140	1	LEVER CAP
9	H00-53150	1	RELEASE LEVER SCREW
10	H00-53030	1	SET FINGER
11	H00-53090	1	SPRING
12	H00-53026	1	WHEEL RELEASE LEVER
13	011-16050	2	BACK SPRING
14	H03-53081	1	SELECTION MOTOR (SHINANOKENSHI)
15	011-18220	1	SPRING
16	H00-53011	1	SELECTION MOTOR BRACKET
17	H00-57545	1	SENSOR PCB ASSEMBLY
18	011-00010	9	SCREW M3.0 X 4
19	H00-53050	1	CASSETTE SET SPRING
20	011-00150	1	SCREW M4.0 X 4
21	H00-53065	1	WHEEL HOLDER ASSEMBLY
22	330-51850	2	SCREW A
23	H00-53041	1	EJECTOR
24	H00-52015	1	FRONT PLATE COMPLETE
25	011-11030	1	SPRING
26	H00-52035	1	LOCATOR ASSEMBLY
28	011-07520	2	WASHER 3 X 6 X 0.5
*	H00-50000	1 SET	CARRIER ASSEMBLY *CARRIER ASSEMBLY IS COMPOSED OF CARRIER DRIVE FRAME, RIBBON BASE MECHANISM, RIBBON DRIVE, PRINTER HEAD & FRONT PLATE MECHANISM, CARRIER PCB ASSEMBLY

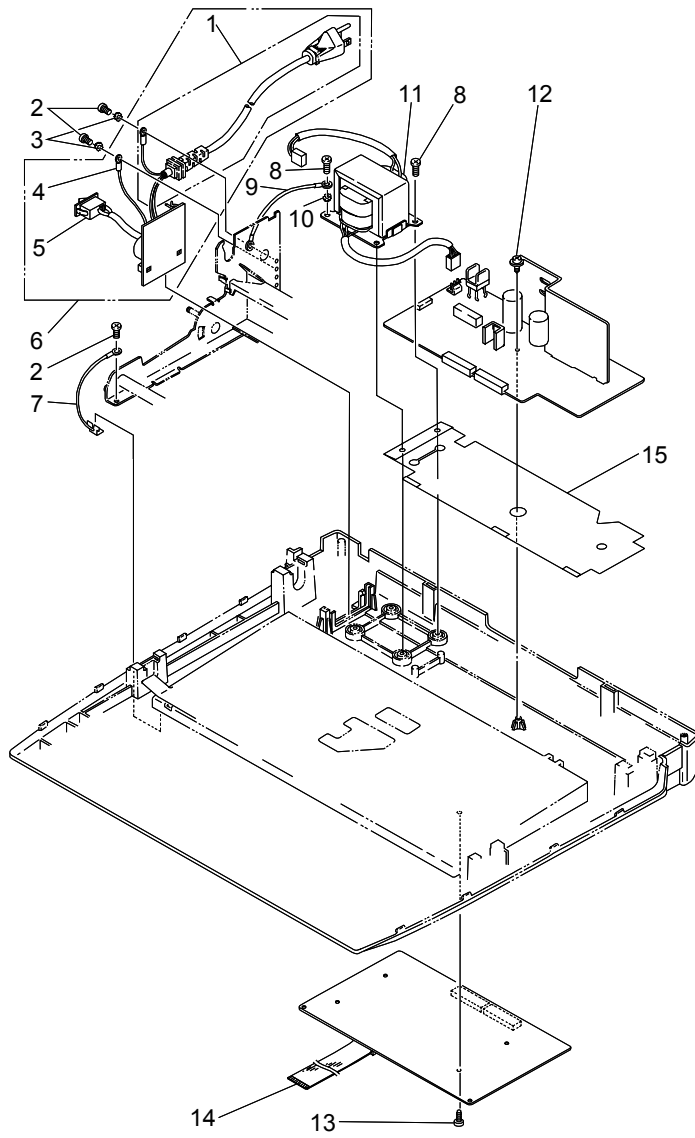


**FUNCTIONAL
GROUP NAME**

HOUSING

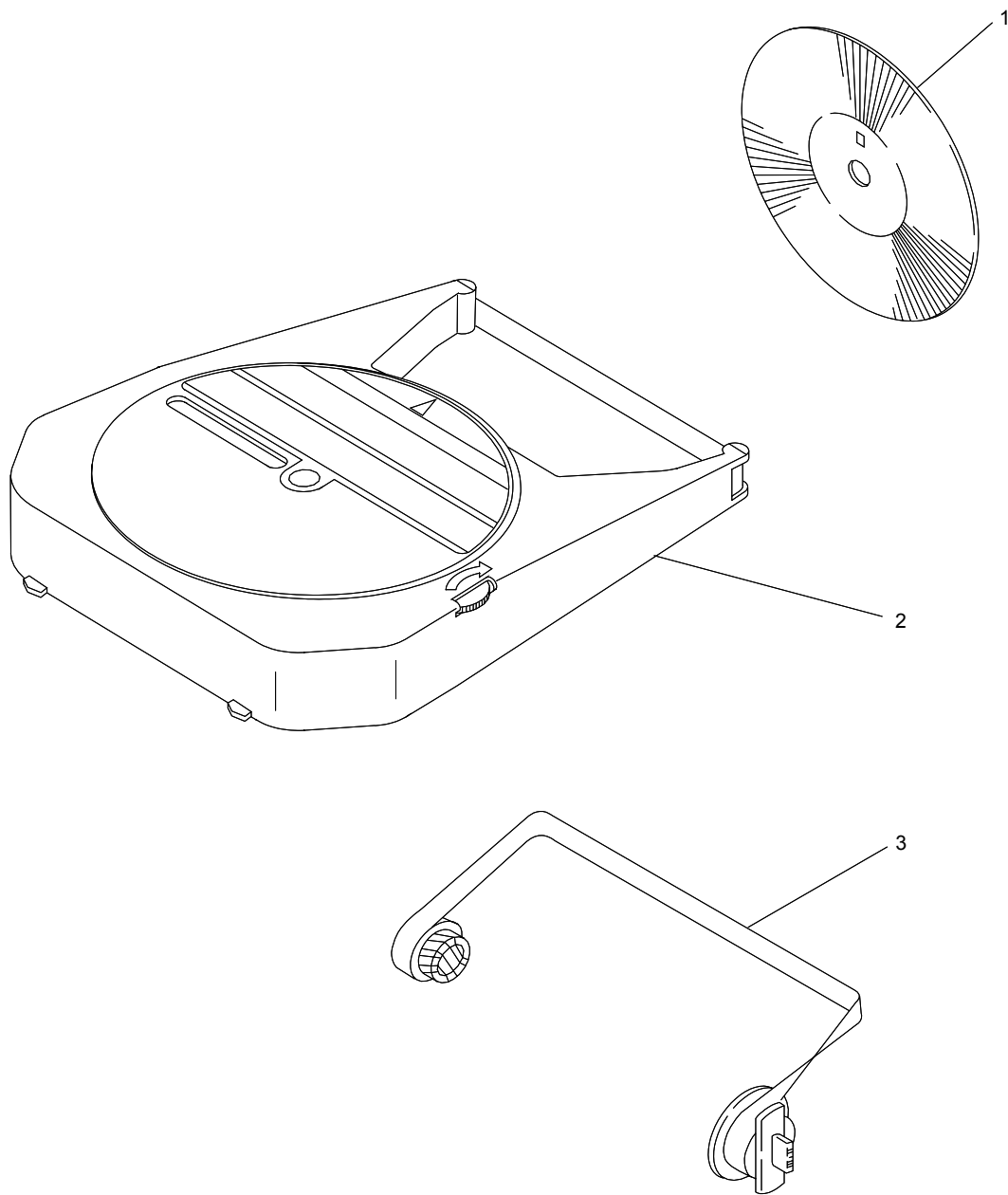
MODEL AE-830

REF. NO.	PART CODE	Q'TY	DESCRIPTION
1	400-70086-35	1	PAPER STAND
2	400-70411-35	1	PAPER GUIDE
3	400-70381-22	1	GLARE SHIELD
4	005-11500	1	NOISE COVER
5	H03-73340	1	LCD SHEET (ENGLISH)
	H03-73360	1	LCD SHEET (FRENCH)
6	H03-73020-19	1	LCD CASE LID
7	330-00140	2	SCREW M3.0 X 8
8	H03-73050	2	GUARD SPONGE
9	270-55220	2	RUBBER
10	200-71050	2	SCREW M3.0 X 12
11	005-54005	1	TOP COVER ASSEMBLY
12	H03-73076	1	LCD MODULE ASSEMBLY
13	H03-73097	1	LCD VOLUME ASSEMBLY
14	H03-73010-19	1	LCD CASE BOTTOM
15	H03-73030	2	DETENT SPRING
16	H00-70090	1	TOP COVER SHAFT
17	011-02040	1	RETAINING RING D=3
18	H03-70380	1	LOGO SHEET
19	H03-70390	1	CODE FUNCTION SHEET (ENGLISH)
	H03-70450	1	CODE FUNCTION SHEET (FRENCH)
20	005-62642	1	MAIN COVER ASSEMBLY 120V (USA/HISPANO 3)
	005-62654	1	MAIN COVER ASSEMBLY 120V (NEW CANADIAN-FRENCH)
FOR 20	001-21650	1	LABEL:120V
	001-20009	1	CAUTION LABEL
	001-20242	1	FCC LABEL
21	330-70050	1	WIRE CLAMP
22	005-75002	1	BOTTOM PAN ASSEMBLY 120V
23	330-00040	3	SCREW M3.0 X 12
24	H00-71020	1	PCB COVER
25	H00-61100	4	SIDE RUBBER BRACKET
26	H00-72020-22	1	CONNECTOR HOLDER
27	H00-71040	1	CABLE CLIP
28	880-90051	2	SCREW M3.0 X 16
29	H00-71030	4	RUBBER LEG
30	H03-74200	1	LCD SHIELD PLATE



**FUNCTIONAL
GROUP NAME****POWER SUPPLY****MODEL AE-830**

REF. NO.	PART CODE	Q'TY	DESCRIPTION
1	H00-21016-00-10	1	POWER SUPPLY 120V
2	H00-61050	4	POWER SUPPLY CORD FOR UL/CSA
3	531-00850	2	TAPPING SCREW M3.5 X 6
4	H00-22016	1	TOOTH WASHER M3.5
5	H00-21036	1	FG LEAD ASSEMBLY
6	H00-22006	1	SWITCH ASSEMBLY
7	H00-71066	1	FILTER PCB ASSEMBLY FOR 120V
8	330-00320	2	EARTH LEAD ASSEMBLY
9	H00-23055	4	SCREW M4.0 X 10
10	011-07700	1	TRANS FG LEAD
11	H00-23010	1	TOOTH WASHER M4.5
12	H00-23010	1	TRANSFORMER ASSEMBLY 120V
13	500-85010	3	SCREW M3.0 X 8
14	330-00140	4	SCREW M3.0 X 8
15	H00-41010-00-97	1	KEYBOARD CABLE
	H00-71100	1	BOTTOM SHIELD PLATE



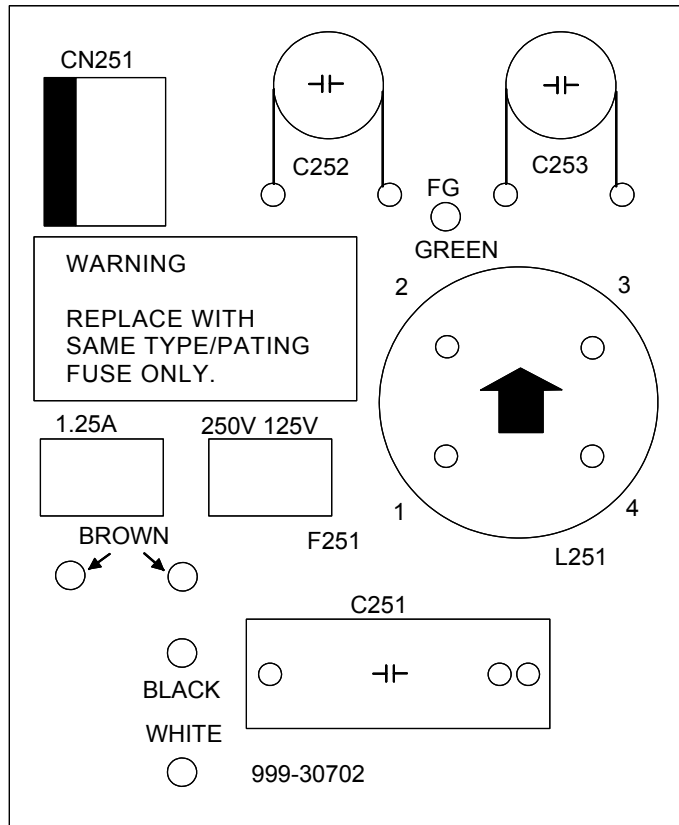
**FUNCTIONAL
GROUP NAME**

ACCESSORIES

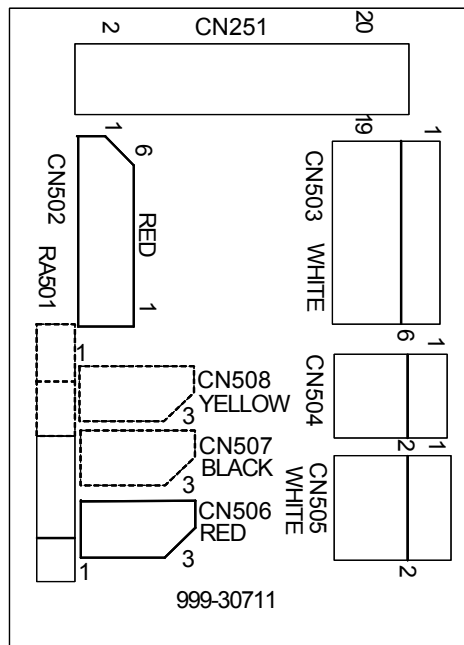
MODEL AE-830

REF. NO.	PART CODE	Q'TY	DESCRIPTION
1	*	1	WHEEL SET ASSEMBLY
2	H00-78100	1	CORRECTABLE RIBBON CASSETTE
3	330-75105-00-FL	1	LIFT-OFF CORRECTION TAPE

*PARTS WHICH HAVE THE PART
CODE PRINTED ON THE PART, OR
SEPARATELY INFORMED.



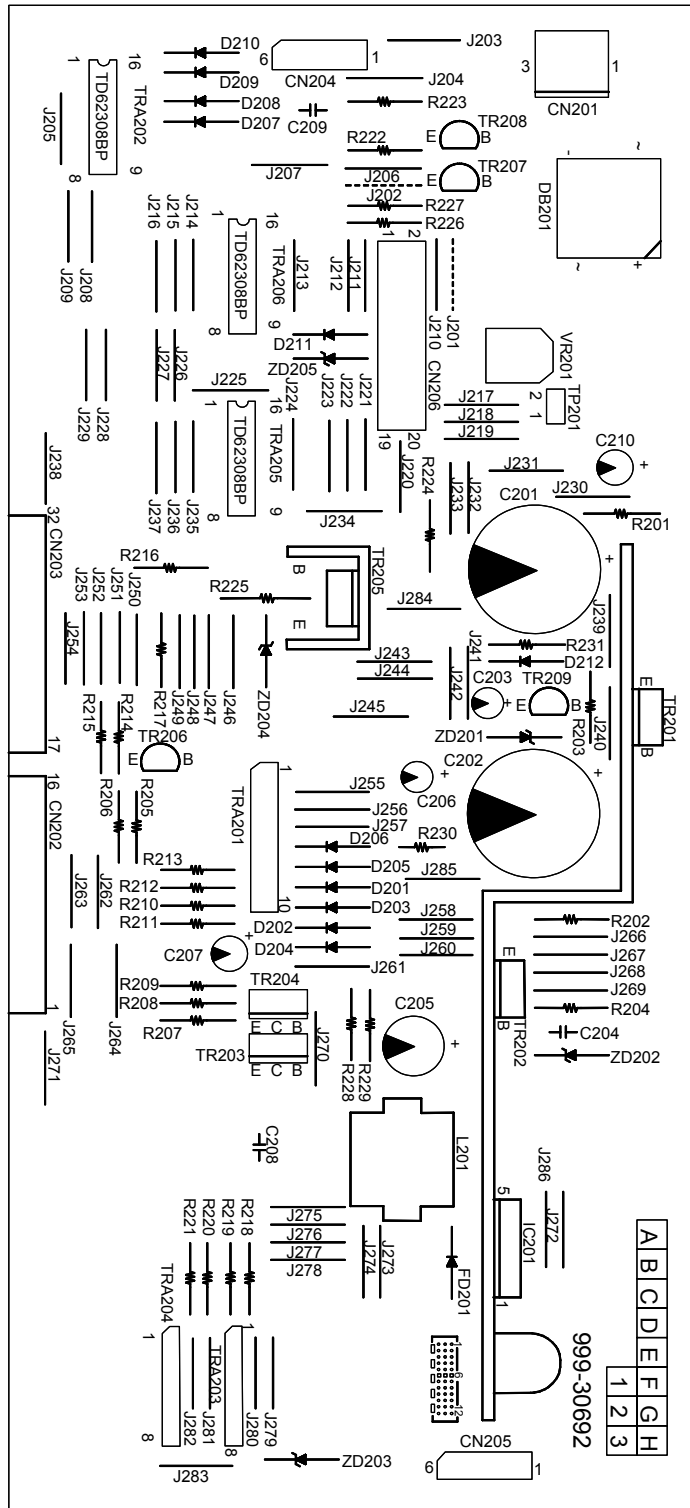
NOISE FILTER PCB



CARRIER PCB

FUNCTIONAL GROUP NAME		NOISE FILTER PCB & CARRIER PCB		MODEL AE-830
REF. NO.	PART CODE	Q'TY	DESCRIPTION	
ASS'Y	H00-22006	1	NOISE FILTER PCB ASSEMBLY FILTER PCB ASSEMBLY FOR 120V	
PCB	999-30702	1	NOISE FILTER PCB	
L251	999-05548	1	CHOCKING COIL (SC-20-10F)	
C251	999-02778	1	CAPACITOR 0.1UF 250V	
C252,253	999-02531-00-MU	2	CAPACITOR 4700PF 400V	
F251	998-05480	1	FUSE 1.25A 250V	
FOR F251	220-32280	2	FUSE CLIP	
CN251	999-04539	1	CONNECTOR 2 PINS	
	H00-21036	1	SWITCH ASSEMBLY	
ASS'Y	H00-57005	1	CARRIER PCB ASSEMBLY CARRIER PCB ASSEMBLY	
PCB	999-30711	1	CARRIER PCB	
CN501	H00-57015	1	CARRIER PCB CABLE ASSEMBLY	
CN502	220-32340	1	CONNECTOR 6 PINS RED	
CN503	999-04542	1	CONNECTOR 6 PINS WHITE	
CN504	999-04546	1	CONNECTOR 2 PINS	
CN505	999-04544	1	CONNECTOR 3 PINS WHITE	
CN506	999-04638	1	CONNECTOR 3 PINS RED	
RA501	999-02426-00-MU	1	RESISTOR ARRAY 330OHM X 4	
*	H00-50000	1	CARRIER ASSEMBLY *CARRIER ASSEMBLY IS COMPOSED OF CARRIER DRIVE FRAME, RIBBON BASE MECHANISM, RIBBON DRIVE, PRINTER HEAD & FRONT PLATE MECHANISM, AND CARRIER PCB ASSEMBLY.	

FUNCTIONAL GROUP NAME		DRIVER PCB ASSEMBLY		MODEL AE-830
REF. NO.	PART CODE	Q'TY	DESCRIPTION	
ASS'Y	H00-20000	1 SET	DRIVER PCB ASSEMBLY	
PCB	999-30692-00-89	1	DRIVER PCB	
IC201	999-04013	1	REGULATOR STR20005 (SANKEN)	
FOR IC201	330-00240	1	SCREW M3.0 X 10	
	H00-20011	1	POWER COOLING PLATE	
	880-90170	1	SCREW M3.0 X 8	
DB201	330-21160	1	DIODE BRIDGE SAVB20 (SHINDENGEN)	
FOR DB201	220-32410	1	COOLING PLATE	
	H00-20020	1	SCREW M3.0 X 12	
TRA201	999-03408-00-10	1	TRANSISTOR ARRAY UPA1437H (NEC)	
TRA202,205	999-03412-00-20	3	TRANSISTOR ARRAY M5248P (MITSUBISHI)	
206				
TRA203,204	999-03420	2	TRANSISTOR ARRAY M5269L (MITSUBISHI)	
TR201,202,205	999-03235	3	TRANSISTOR 2SD1785 (SANKEN)	
TR203,204	999-03200	2	TRANSISTOR 2SB938A (MATSUSHITA)	
TR206	330-30220	1	TRANSISTOR 2SA562 (TOSHIBA)	
TR207	330-30210	1	TRANSISTOR 2SC1815 (TOSHIBA)	
TR208,209	999-03233-00-12	2	TRANSISTOR 2SC3656AA (NEC)	
FOR201,202	330-00240	2	SCREW M3.0 X 10	
FOR TR205	501-70080	1	SCREW M3.0 X 10	
	338-30070	1	COOLING PLATE	
	011-03510	1	NUT M3	
	011-05510	1	WASHER 3	
ZD201	220-32100	1	ZENER DIODE HZ27-1 (HITACHI)	
ZD202	220-32110	1	ZENER DIODE HZ12B-2TD(HITACHI)	
ZD203-205	999-12917	3	ZENER DIODE 1AZ33 (TOSHIBA)	
D201-211	220-32090-00-30	11	DIODE S5566G (TOSHIBA)	
D212	998-05450	1	DIODE 1S2076A (HITACHI)	
FD201	999-02956	1	FAST RECOVERY DIODE ERB-32-02 (FUJI ELECTRONICS)	
L201	999-05545	1	CHOKING COIL CC400 (TDK)	

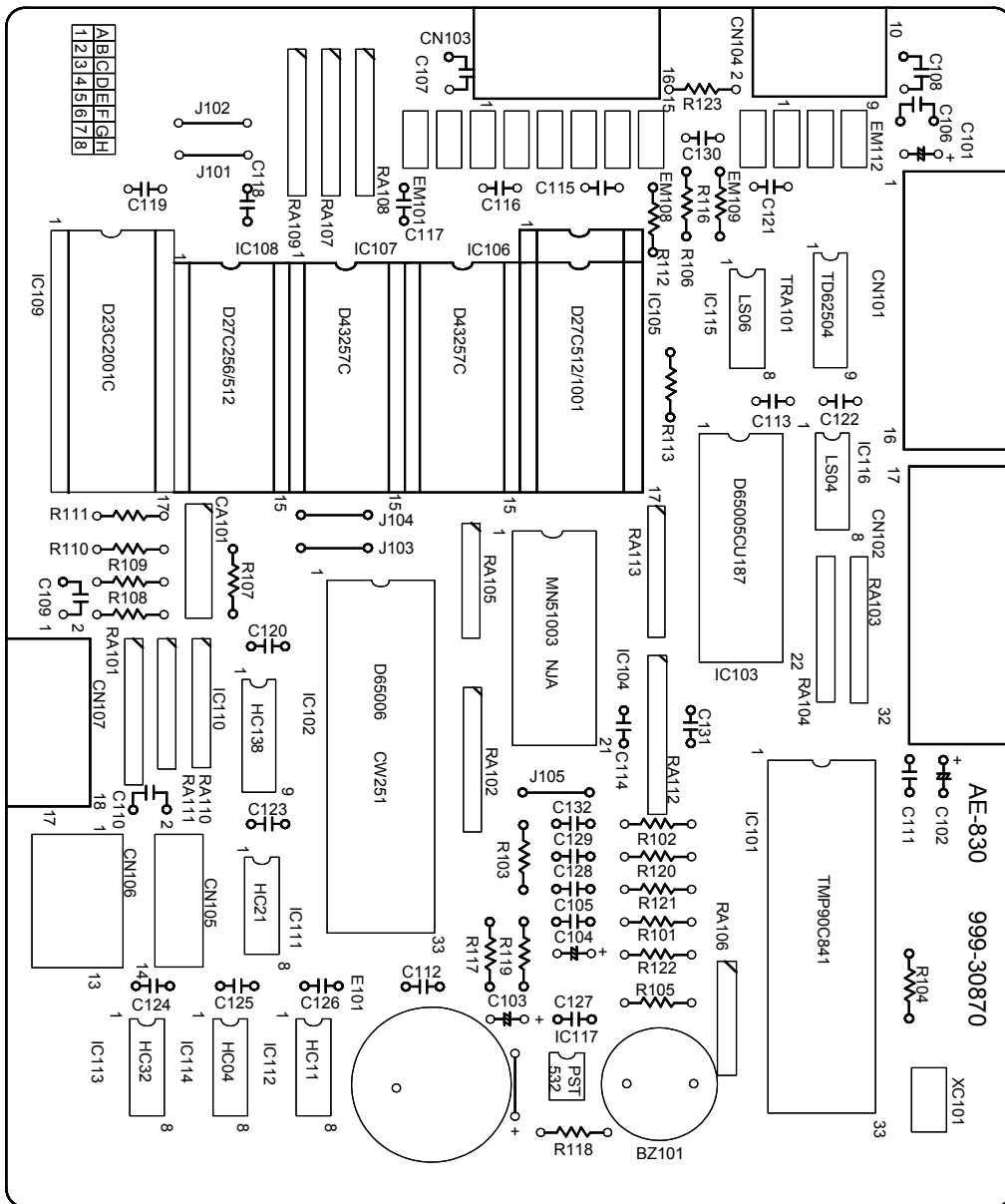


**FUNCTIONAL
GROUP NAME**

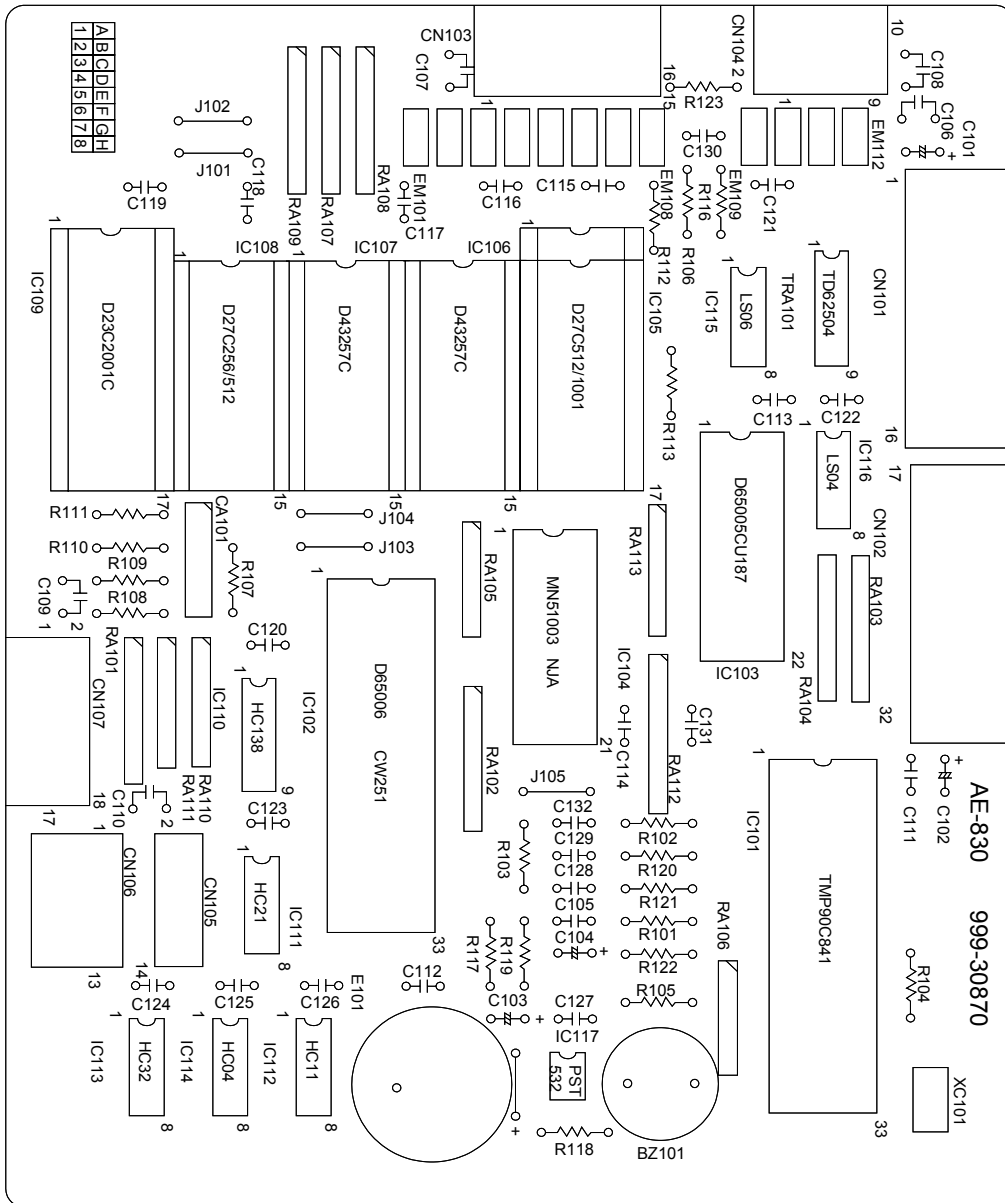
DRIVER PCB ASSEMBLY

MODEL AE-830

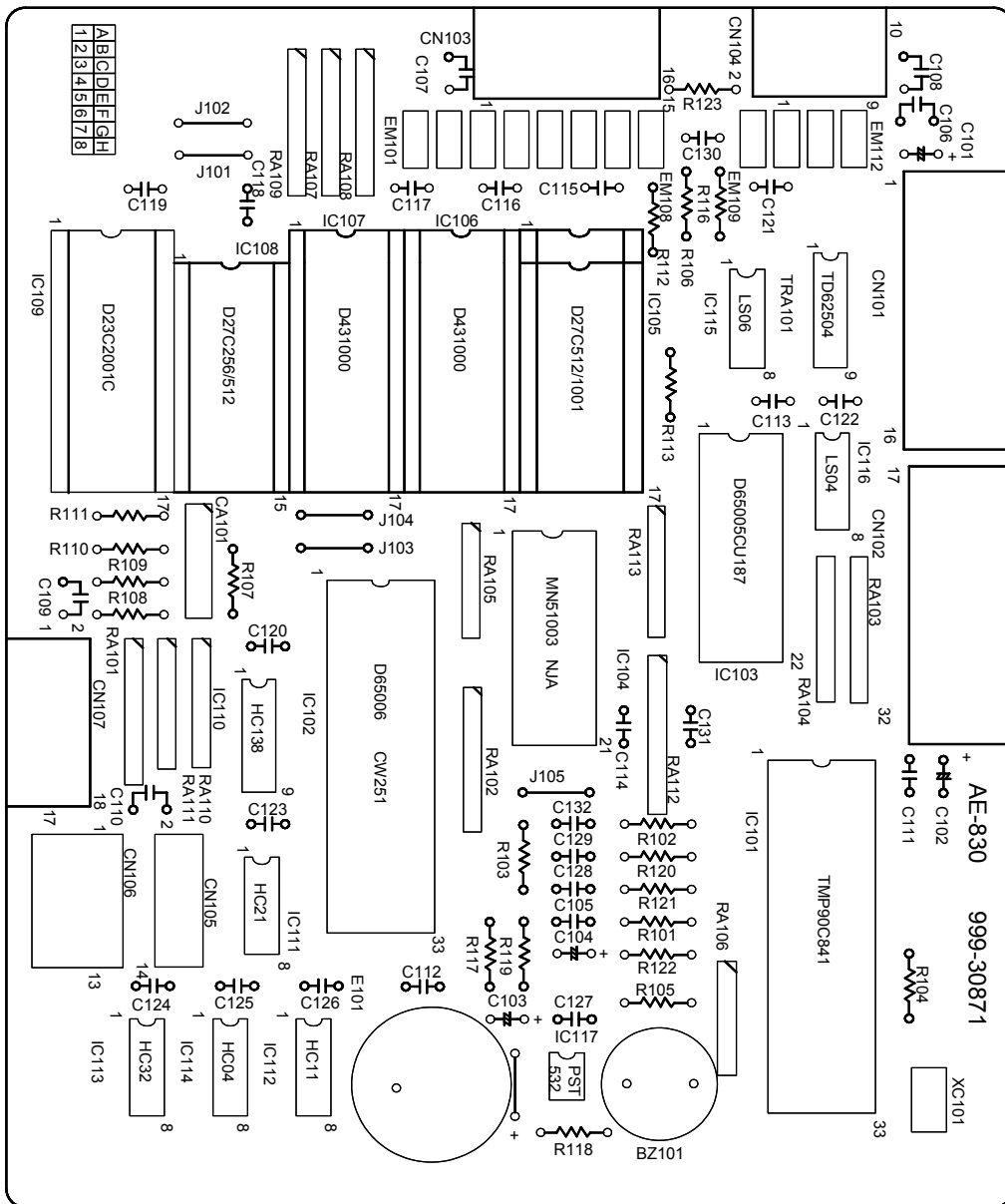
REF. NO.	PART CODE	Q'TY	DESCRIPTION
R201	999-00153-00-TA	1	RESISTOR 15KOHM 1/4W
R202	999-00562-00-TA	1	RESISTOR 5.6KOHM 1/4W
R203	999-02193	1	RESISTOR 3.3KOHM 0.5W
R204	330-22300-00-TA	1	RESISTOR 2.2KOHM 1/4W
R205,223 231	330-30440-00-TA	3	RESISTOR 10KOHM 1/4W
R206-213	330-30470-00-TA	8	RESISTOR 3KOHM 1/4W
R214-217	340-30481-00-TA	4	RESISTOR 5.1KOHM 1/4W
R222	999-00122-00-TA	1	RESISTOR 1.2KOHM 1/4W
R224	330-30550-00-TA	1	RESISTOR 2KOHM 1/4W
R228,229	650-31170-00-TA	2	RESISTOR 100OHM 1/4W
R226,227	650-31180-00-TA	2	RESISTOR 39KOHM 1/4W
R218,219, 220,221	330-31010-00-TA	4	RESISTOR 120OHM 1/4W
R225	999-02051	1	METAL FILM RESISTOR 0.47OHM 1W
R230	999-12009	1	RESISTOR 20OHM 2W
VR101	999-02013-00-20	1	VARIABLE RESISTOR 5KOHM
C201	999-02731	1	CAPACITOR 3300UF 50V
C202	998-30260	1	CAPACITOR 4700UF 35V
C203	220-31150	1	CAPACITOR 10UF 35V
C205	999-02713	1	CAPACITOR 1000UF 10V
C206	340-30630-00-RU	1	CAPACITOR 47UF 16V
C207,210	998-30270	2	CAPACITOR 47UF 50V
C204	999-12728	1	CAPACITOR 0.01UF 50V
C208	999-12738-00-10	1	CAPACITOR 0.1UF 50V
C209	999-12513-00-MU	1	CAPACITOR 1000UF 50V
CN201	999-04535	1	CONNECTOR 3 PINS
CN202,203	999-04657	2	CONNECTOR 16 PINS
CN204	220-32340	1	CONNECTOR 6 PINS RED
CN205	220-32330	1	CONNECTOR 6 PINS WHITE
CN206	330-30750	1	CONNECTOR 20 PINS
TP201	999-04658	1	CONNECTOR 2 PINS



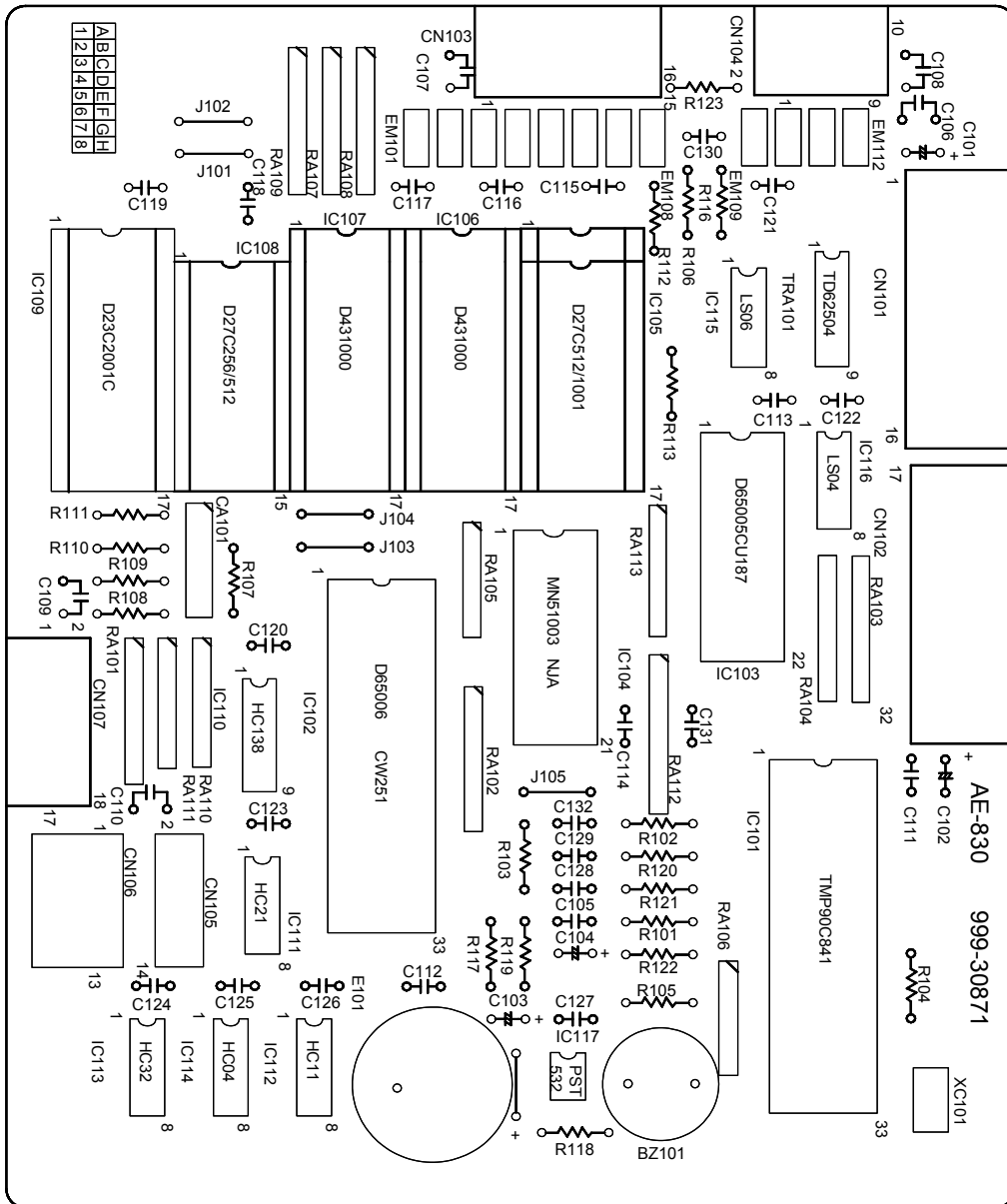
	FUNCTIONAL GROUP NAME	CONTROL PCB FOR INITIAL MODELS	MODEL AE-830
REF. NO.	PART CODE	Q'TY	DESCRIPTION
ASS'Y	H03-30100	1 SET	CONTROL PCB ASSEMBLY A-1
PCB	999-30870	1	CONTROL PCB
IC101	998-04420	1	CPU TMP90C841AN (TOSHIBA)
IC102	999-03706	1	GATE ARRAY UPD65006CW-251 (NEC)
IC103	999-03698	1	GATE ARRAY UPD65005CU-187 (NEC)
IC104	998-05270	1	GATE ARRAY MN51003NJC
IC105	*	1	EP ROM LIST
IC106	998-05760	1	S RAM CXK58267AP-12L (SONY)
IC110	999-03772-00-30	1	CMOS GATE TC74HC138AP (TOSHIBA)
IC111	999-03773-00-30	1	CMOS GATE TC74HC21AP (TOSHIBA)
IC112	999-03774	1	CMOS GATE HD74HC11P (HITACHI)
IC113	999-03775	1	CMOS GATE HD74HC32 (HITACHI)
IC114	999-03776-00-30	1	CMOS GATE HD74HC04P (HITACHI)
IC115	999-03812-00-70	1	TTL GATE SN74LS06N (TI)
IC116	650-31070-00-70	1	TTL INVERTOR SN74LS04N (TI)
IC117	999-04022	1	RESET IC PST532A (MITSUMI)
FOR IC105, 109	999-04033	2	IC SOCKET 32 PINS
FOR IC107, 108	220-31240-00-50	2	IC SOCKET 28 PINS
TRA101	650-31110	1	TRANSISTOR ARRAY TD62504 (TOSHIBA)
RA101	999-02427-00-20	1	RESISTOR ARRAY 15KOHM X 8 1/8W
RA102	355-32110	1	RESISTOR ARRAY 5.1KOHM X 8 1/8W
RA103,104	650-31240	2	RESISTOR ARRAY 3.3KOHM X 8 1/8W
RA105,106	999-02414	2	RESISTOR ARRAY 5.1KOHM X 6 1/8W
RA107-109	650-31260	3	RESISTOR ARRAY 10KOHM X 8 1/8W
RA110,111, 113	353-30020	3	RESISTOR ARRAY 100OHM X 4 1/8W
RA112	999-02419	1	RESISTOR ARRAY 100OHM X 5 1/8W
R101	330-30420-00-TA	1	RESISTOR 51KOHM 1/4W
R103-107	330-30440-00-TA	5	RESISTOR 10KOHM 1/4W
R108-112	340-30481-00-TA	5	RESISTOR 5.1KOHM 1/4W
R113,116	650-31160-00-TA	2	RESISTOR 3.3KOHM 1/4W
R117	340-30570-00-TA	1	RESISTOR 1KOHM 1/4W
R118	330-30490-00-TA	1	RESISTOR 470OHM 1/4W
R119-123	650-31170-00-TA	5	RESISTOR 100OHM 1/4W



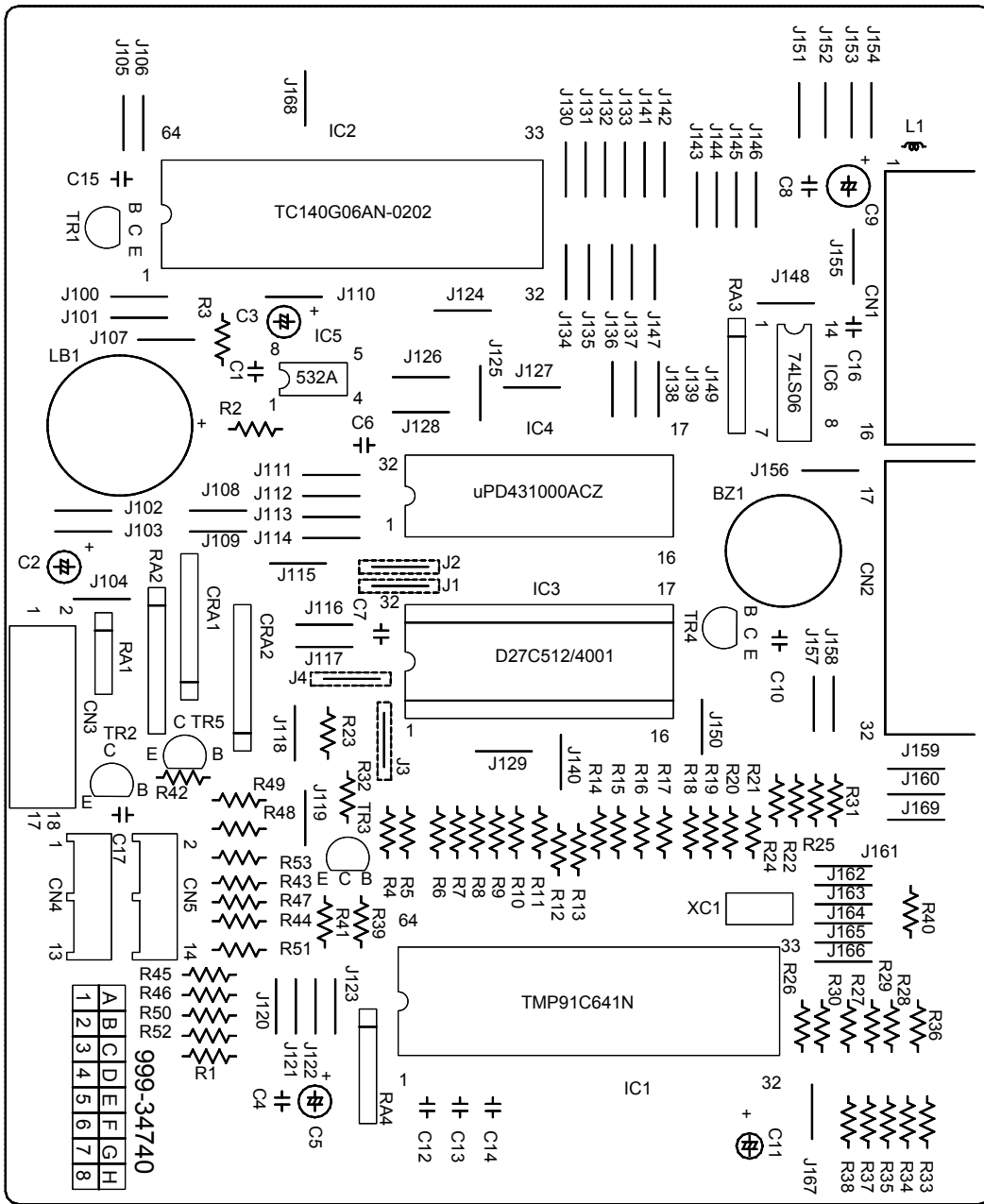
FUNCTIONAL GROUP NAME		CONTROL PCB FOR INITIAL MODELS		MODEL AE-830
REF. NO.	PART CODE	Q'TY	DESCRIPTION	
BZ101	999-05632	1	BUZZER PKM17PP-4004 (MURATA)	
E101	999-05718-00-18	1	BATTERY CR2450-F2MX1H (SONY)	
EM101-112	999-05720-00-MU	12	EMI FILTER 100PF 50V	
CA101	999-02814	1	CAPACITOR ARRAY 100PF X 8	
C101	999-02790	1	CAPACITOR 47UF 10V	
C102,103	999-02791-00-30	2	CAPACITOR 10UF 16V	
C104	330-30610-00-10	1	CAPACITOR 1UF 16V	
C105	999-12738-00-10	1	CAPACITOR 0.1UF 50V	
C106-110	999-02815-00-MU	5	CAPACITOR 10000PF 50V	
C111-127	999-12535-00-MU	17	CAPACITOR 0.1UF 25V	
C128-131	650-31280-00-MU	4	CAPACITOR 100PF 50V	
CN101,102	999-04660	2	CONNECTOR 16 PINS	
CN103	999-04706	1	CONNECTOR 16 PINS	
CN104	999-04711	1	CONNECTOR 10 PINS	
CN105,106	998-05150	1	CONNECTOR 7 PINS	
CN107	999-04659	1	CONNECTOR 18 PINS	
FOR CN107	H00-41010	1	KEYBOARD CABLE	
XC101	998-46190	1	CERAMIC RESONATOR 10MHZ	
IC105	RQ-04693	1	EP ROM LIST USA	
	RQ-04773	1	HISPANO 3	
	RQ-04823	1	NEW CANADIAN-FRENCH	



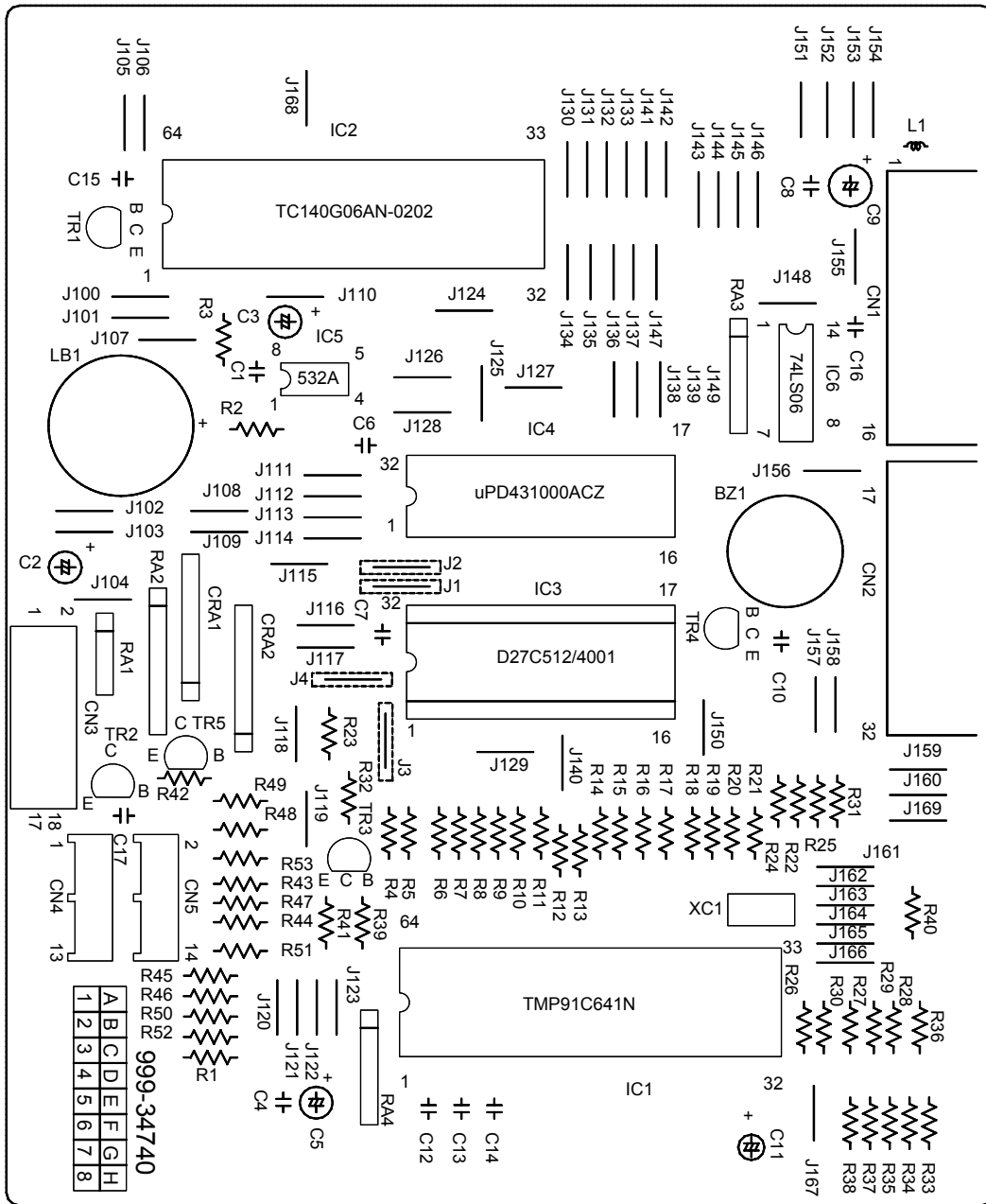
	FUNCTIONAL GROUP NAME	CONTROL PCB FOR SECOND MODELS	MODEL AE-830
REF. NO.	PART CODE	Q'TY	DESCRIPTION
ASS'Y	H03-30110	1	CONTROL PCB ASSEMBLY B-1
PCB	999-30871	1	CONTROL PCB
IC101	998-11030	1	CPU TMP91C641N (TOSHIBA)
IC102	999-03706	1	GATE ARRAY UPD65006CW-251 (NEC)
IC103	999-03698	1	GATE ARRAY UPD65005CU-187 (NEC)
IC104	998-05270	1	GATE ARRAY MN51003NJC
IC105	*	1	EP ROM LIST
IC106	998-43290	1	S RAM UPD431000ACZ-70LL (NEC)
IC110	999-03772-00-30	1	CMOS GATE TC74HC138AP (TOSHIBA)
IC111	999-03773-00-30	1	CMOS GATE TC74HC21AP (TOSHIBA)
IC112	999-03774-00-30	1	CMOS GATE HD74HC11P (HITACHI)
IC113	999-03775	1	CMOS GATE HD74HC32 (HITACHI)
IC114	999-03776-00-30	1	CMOS GATE TC74HC04AP (TOSHIBA)
IC115	999-03812-00-70	1	TTL GATE SN74LS06N (TI)
IC116	650-31070-00-70	1	TTL INVERTOR SN74LS04N (TI)
IC117	999-04022	1	RESET IC PST532A (MITSUMI)
FOR IC105, 109,107	999-04033	3	IC SOCKET 32 PINS
FOR IC108,	220-31240-00-50	1	IC SOCKET 28 PINS
TRA101	650-31110	1	TRANSISTOR ARRAY TD62504 (TOSHIBA)
RA101	999-02427	1	RESISTOR ARRAY 15KOHM X 8 1/8W
RA102	355-32110-00-20	1	RESISTOR ARRAY 5.1KOHM X 8 1/8W
RA103,104	650-31240-00-20	2	RESISTOR ARRAY 3.3KOHM X 8 1/8W
RA105,106	999-02414	2	RESISTOR ARRAY 5.1KOHM X 6 1/8W
RA107-109	650-31260-00-20	3	RESISTOR ARRAY 10KOHM X 8 1/8W
RA110,111, 113	353-30020-00-20	3	RESISTOR ARRAY 100OHM X 4 1/8W
RA112	999-02419	1	RESISTOR ARRAY 100OHM X 5 1/8W
R101	330-30420-00-TA	1	RESISTOR 51KOHM 1/4W
R103-107	330-30440-00-TA	5	RESISTOR 10KOHM 1/4W
R108-112	340-30481-00-TA	5	RESISTOR 5.1KOHM 1/4W
R113,116	650-31160-00-TA	2	RESISTOR 3.3KOHM 1/4W
R117	340-30570-00-TA	1	RESISTOR 1KOHM 1/4W
R118	330-30490-00-TA	1	RESISTOR 470OHM 1/4W
R119-123	650-31170-00-TA	5	RESISTOR 100OHM 1/4W



FUNCTIONAL GROUP NAME		CONTROL PCB FOR SECOND MODELS		MODEL AE-830
REF. NO.	PART CODE	Q'TY	DESCRIPTION	
BZ101	999-05632	1	BUZZER PKM17PP-4004 (MURATA)	
E101	999-05718-00-30	1	BATTERY CR2450 THE2 (TOSHIBA)	
EM101-112	999-05720-00-MU	12	EMI FILTER 100PF 50V	
CA101	999-02814	1	CAPACITOR ARRAY 100PF X 8	
C101	999-02790-00-30	1	CAPACITOR 47UF 10V	
C102,103	999-02791-00-30	2	CAPACITOR 10UF 16V	
C104	330-30610-00-15	1	CAPACITOR 1UF 16V	
C105	999-12738	1	CAPACITOR 0.1UF 50V	
C106-110	999-02815-00-MU	5	CAPACITOR 10000PF 50V	
C111-127	999-12535-00-MU	17	CAPACITOR 0.1UF 25V	
C128-131	650-31280-00-MU	4	CAPACITOR 100PF 50V	
CN101,102	999-04660	2	CONNECTOR 16 PINS	
CN103	999-04706	1	CONNECTOR 16 PINS	
CN104	999-04711	1	CONNECTOR 10 PINS	
CN105,106	998-05150	1	CONNECTOR 7 PINS	
CN107	999-04659	1	CONNECTOR 18 PINS	
FOR CN107	H00-41010	1	KEYBOARD CABLE	
XC101	998-46190	1	CERAMIC RESONATOR 10MHZ	
IC105	RQ-04693	1	EP ROM LIST USA	
	RQ-04773	1	HISPANO 3	
	RQ-04823	1	NEW CANADIAN-FRENCH	



	FUNCTIONAL GROUP NAME	CONTROL PCB FOR THIRD MODELS	MODEL AE-830
REF. NO.	PART CODE	Q'TY	DESCRIPTION
ASS'Y	H03-32200-00-10	1	CONTROL PCB ASSEMBLY WITH SPELLING CHECK B-1
PCB	999-34740	1	CONTROL PCB
IC1	998-11030	1	CPU TMP91C641N (TOSHIBA)
IC2	998-16820	1	GATE ARRAY TC140G06AN-0202 (TOSHIBA)
IC3	*	1	EP ROM LIST
FOR IC3	999-04033	1	IC SOCKET 32 PINS
IC4	998-43290	1	S RAM UPD431000ACZ-70LL (NEC)
IC5	999-04022	1	RESET IC PST532A (MITSUMI)
IC6	999-03812-00-70	1	TTL GATE SN74LS06N (TI)
TR1 - 5	999-03233-00-12	5	TRANSISTOR 2SC3656 (SANYO)
L1	998-09290	1	INDUCTOR BL03RN2-R62 (MURATA)
C9	999-02790-00-30	1	CAPACITOR 47UF 10V
C2,3,5	999-02791-00-30	3	CAPACITOR 10UF 10V
C11	330-30610-00-15	1	CAPACITOR 1UF 16V
C10	999-12738	1	CAPACITOR 0.1UF 50V
C1,4,6-8, C15-17	999-12535-00-MU	8	CAPACITOR 0.1UF 25V
C12-14	650-31280-00-MU	3	CAPACITOR 100PF 50V
CRA1,2	998-16830	2	CR ARRAY ARCL9L102J102K (MURATA)
RA1	999-02404-00-20	1	RESISTOR ARRAY 5.1KOHM X 4 1/8W
RA2	999-02427	1	RESISTOR ARRAY 15KOHM X 8 1/8W
RA3	650-31250	1	RESISTOR ARRAY 3.3KOHM X 6 1/8
RA4	999-02414	1	RESISTOR ARRAY 5.1KOHM X 6 1/8
R35	330-30420-00-TA	1	RESISTOR 51KOHM 1/4W
R32,36,40, R41	330-30440-00-TA	4	RESISTOR 10KOHM 1/4W
R1,23	340-30481-00-TA	2	RESISTOR 5.1KOHM 1/4W
R39,42	650-31160-00-TA	2	RESISTOR 3.3KOHM 1/4W
R2	340-30570-00-TA	1	RESISTOR 1KOHM 1/4W
R38	330-30490-00-TA	1	RESISTOR 470OHM 1/4W
R3-22, R24-31,33, R34,37, R43-53	650-31170-00-TA	42	RESISTOR 100OHM 1/4W

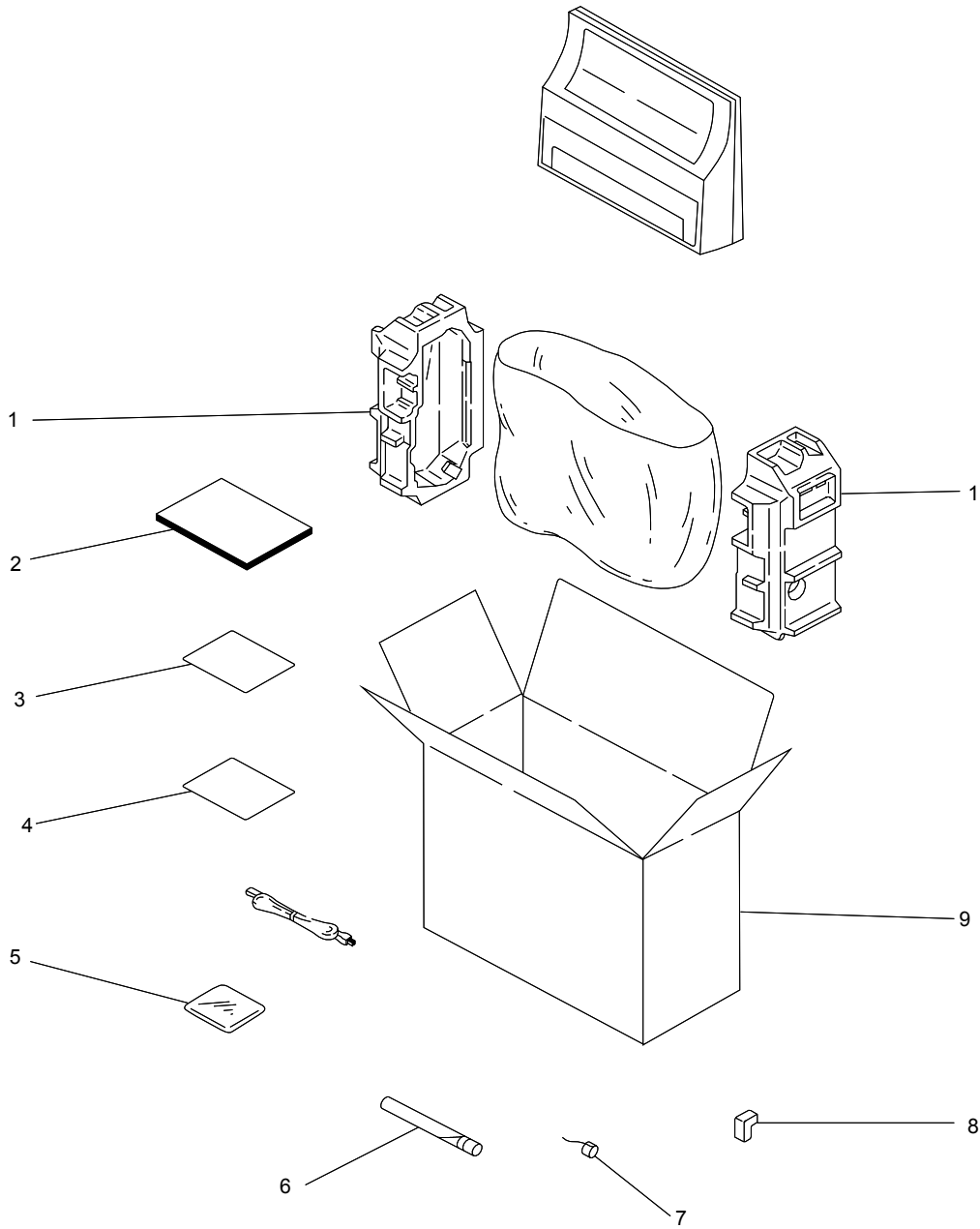


**FUNCTIONAL
GROUP NAME**

**CONTROL PCB FOR
THIRD MODELS**

MODEL AE-830

REF. NO.	PART CODE	Q'TY	DESCRIPTION
LB1	999-05649-00-30	1	BATTERY CR2032 THD (TOSHIBA)
BZ1	999-05632	1	BUZZER PKM17EPP-4004(MURATA)
XC1	998-46190	1	CERAMIC RESONATOR CSTLS10M0G53-B0
CN1,2	999-04660	2	CONNECTOR 16 PINS
CN3	999-04659	1	CONNECTOR 18 PINS
FOR CN3	H00-41010	1	KEYBOARD CABLE
CN4,5	999-05150	2	CONNECTOR 7 PINS
J100-169, J1,3	999-05629	72	JUMPER WIRE
IC3	RQ-05941	1	EP ROM LIST USA WITH SPELLING CHECK
	RQ-06061	1	HISPANO 3 WITH SPELLING CHECK
	RQ-05951	1	NEW CANADIAN-FRENCH WITH SPELLING CHECK



**FUNCTIONAL
GROUP NAME**

PACKING

MODEL AE-830

REF. NO.	PART CODE	Q'TY	DESCRIPTION
1	001-93700	1 SET	SIDE PACKING SET (RIGHT & LEFT)
2	001-01654	1	INSTRUCTION MANUAL ENGLISH (1ST/2ND MODELS)
	001-01654	1	INSTRUCTION MANUAL FRENCH (1ST/2ND MODELS)
	001-02056 OR 001-02421	1	INSTRUCTION MANUAL SPANISH OR HISPANO 3 (1ST/2ND MODELS)
	001-02575	1	INSTRUCTION MANUAL ENGLISH (3RD MODELS)
	001-02578	1	INSTRUCTION MANUAL FRENCH (3RD MODELS)
*	001-02070		SPELLING CHECK FOR ENGLISH/SPANISH (3RD MODELS)
	001-02071		SPELLING CHECK FOR ENGLISH/FRENCH (3RD MODELS)
3	001-01657	1	UNPACKING INSTRUCTION
	001-01652	1	UNPACKING INSTRUCTION (NEW CANADA FRENCH)
4	001-02573	1	WARRANTY
5	H00-72110	1	DUST COVER
6	H00-80020	1	CARRIER PROTECTOR (LARGE)
7	H00-80035	1	CARRIER PROTECTOR (SHORT)
8	H00-80010	1	HEAD PACKING
9	001-61970	1	CARTON BOX

Printed in Japan
001-03165-03
041130
AE-830NU