

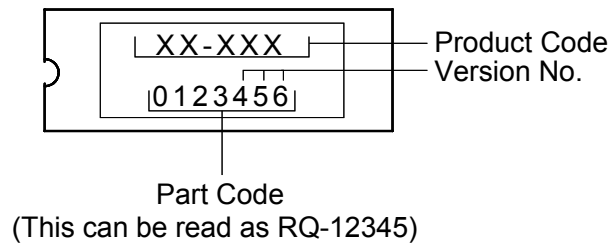
PARTS LIST
WPT160
Electronic Typewriter

EDITION 2
NOV. 2004
001-03155-02

PREFACE

1. This parts list is used to order parts required for the electronic typewriter.
2. The part code for the ROM including version number is printed on the protection label as illustrated below.
Be sure to use same part code for compatibility when ordering parts.

Example:



3. The Classified mark is printed on the control PCB as illustrated below.
Be sure to use the same classified mark for compatibility when ordering parts.

Example:

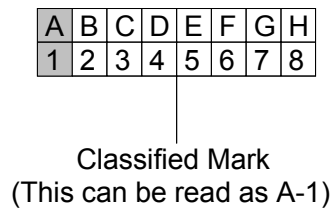
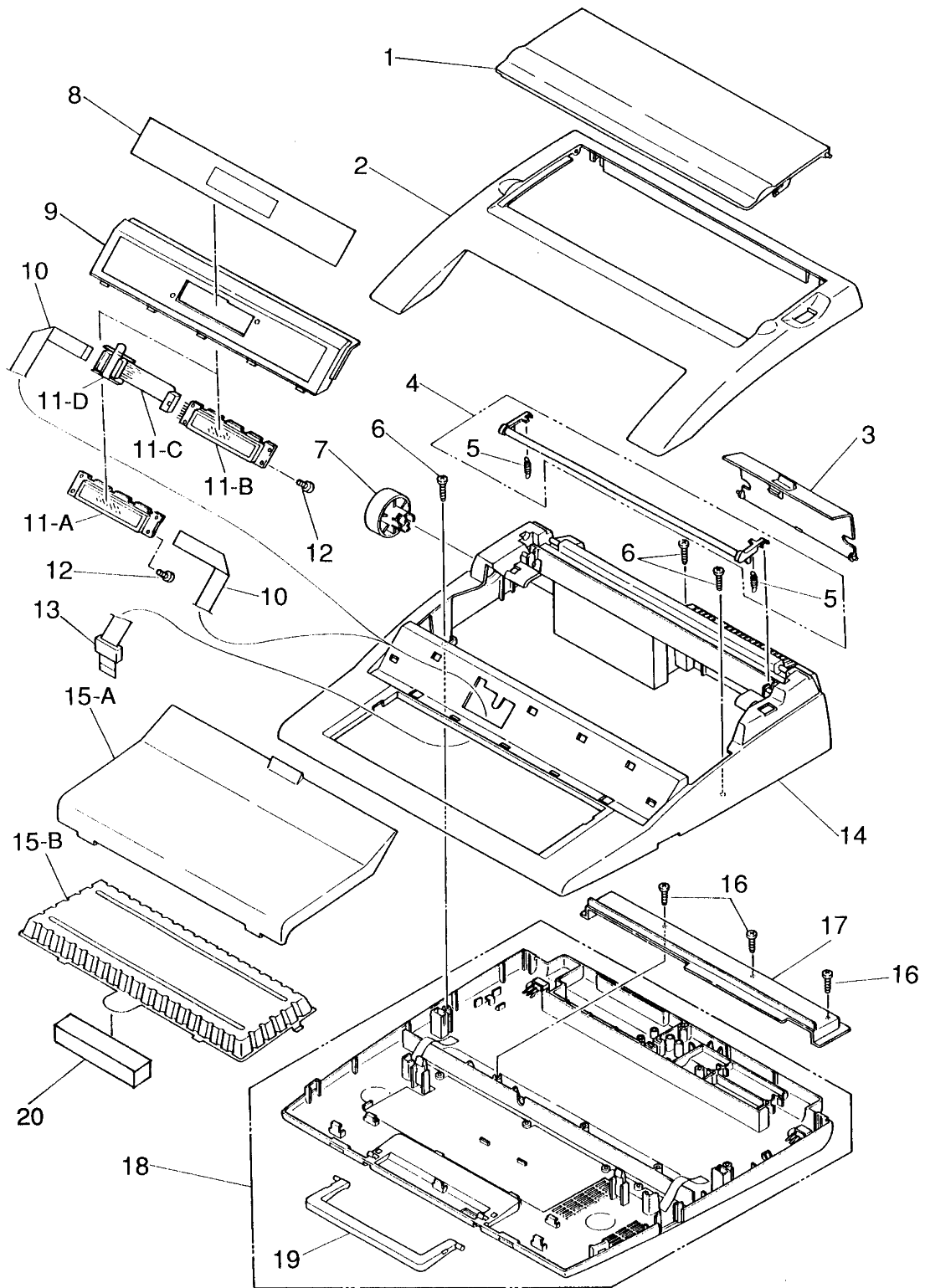
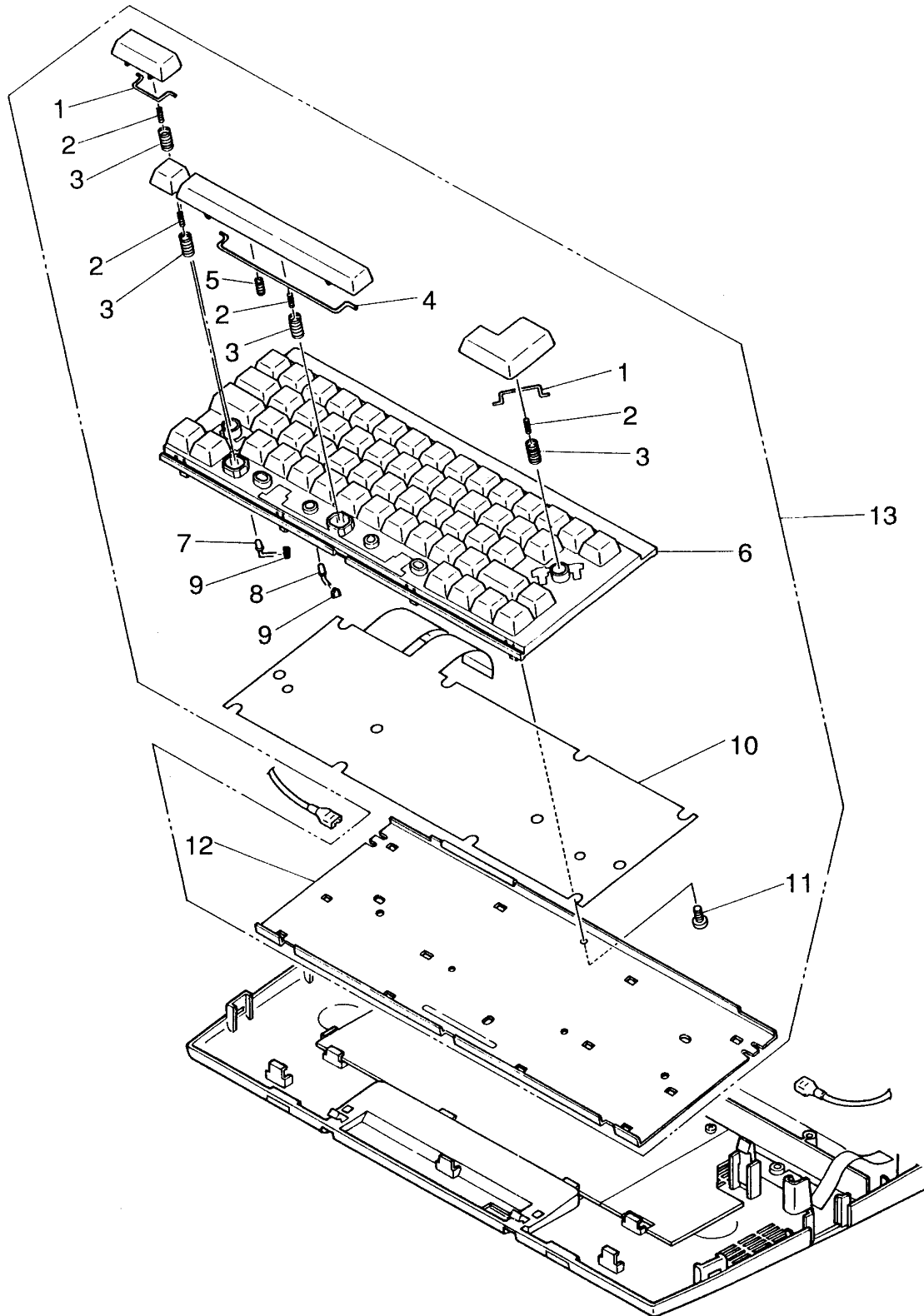


TABLE OF CONTENTS

HOUSING	1
KEYBOARD	3
PLATEN	5
LF AND CARRIER DRIVE	7
CASSETTE BASE AND RIBBON DRIVE	9
SELECTION AND HAMMER	11
ACCESSORIES	13
POWER SUPPLY	15
CONTROL PCB	17
PACKING	27

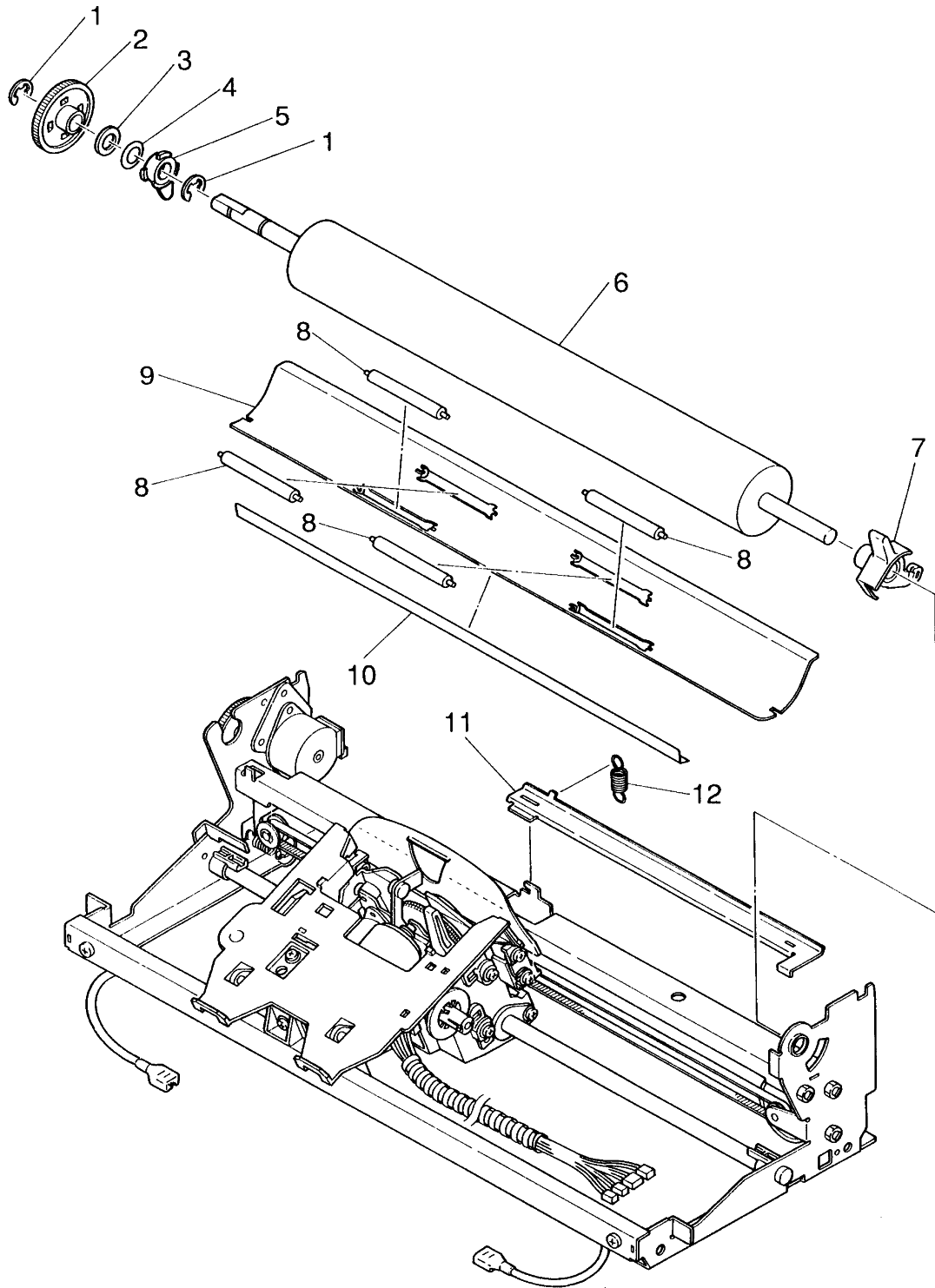


	FUNCTIONAL GROUP NAME	HOUSING	MODEL	WPT160
REF. NO.	PART CODE	Q'TY	DESCRIPTION	
1	150-71520-44	1	PAPER STAND	
2	150-95070-44	1	TOP COVER	
3	150-71580-44	1	CORD COVER	
4	150-70120	1	PAPER BAIL ASSEMBLY	
5	100-72110	2	PAPER BAIL SPRING	
6	200-71060	3	SCREW M3.0 X 16	
7	150-71540-45	1	PLATEN KNOB	
8	150-93270	1	LCD SHEET (ENGLISH WITH SPELLING CHECK)	
	150-93210	1	LCD SHEET (ENGLISH)	
	150-93290	1	LCD SHEET (FRENCH WITH SPELLING CHECK)	
9	150-71560-44	1	LCD COVER	
10	150-27030	1	LCD FFC CABLE	
11-A	150-27020	1	LCD ASSEMBLY (AMERICAN ETC.) (EPSON)	
11-B	060-01270	1	LCD ASSEMBLY (AMERICAN ETC.) (ALPS)	
11-C	150-28100	1	LCD TERMINAL PCB ASSEMBLY (USED TO "ALPS" LCD)	
11-D	150-28200	1	SHIELD COVER (USED TO "ALPS" LCD)	
12	060-27010	2	SCREW M2.0 X 5	
13	998-00300	1	FERRITE CORE	
14	150-71110-44	1	MAIN CABINET	
15-A	150-71530-44	1	KEYBOARD COVER	
15-B	150-81030	1	FRONT PACKING	
16	200-71040	3	SCREW M3.0 X 10	
17	150-70591-44	1	PCB COVER (ORIGINAL PCB)	
	150-70591-33	1	PCB COVER (TEMPORARY PART)	
18	150-71400	1	BOTTOM CABINET ASSEMBLY	
FOR 18	001-21668	1	LABEL (120V)	
	001-21014	1	LABEL (120V:FCC)	
	001-20912	1	LABEL (120V:WARNING)	
19	150-71320-44	1	HANDLE	
20	150-81050	1	KEYBOARD HOLDER	



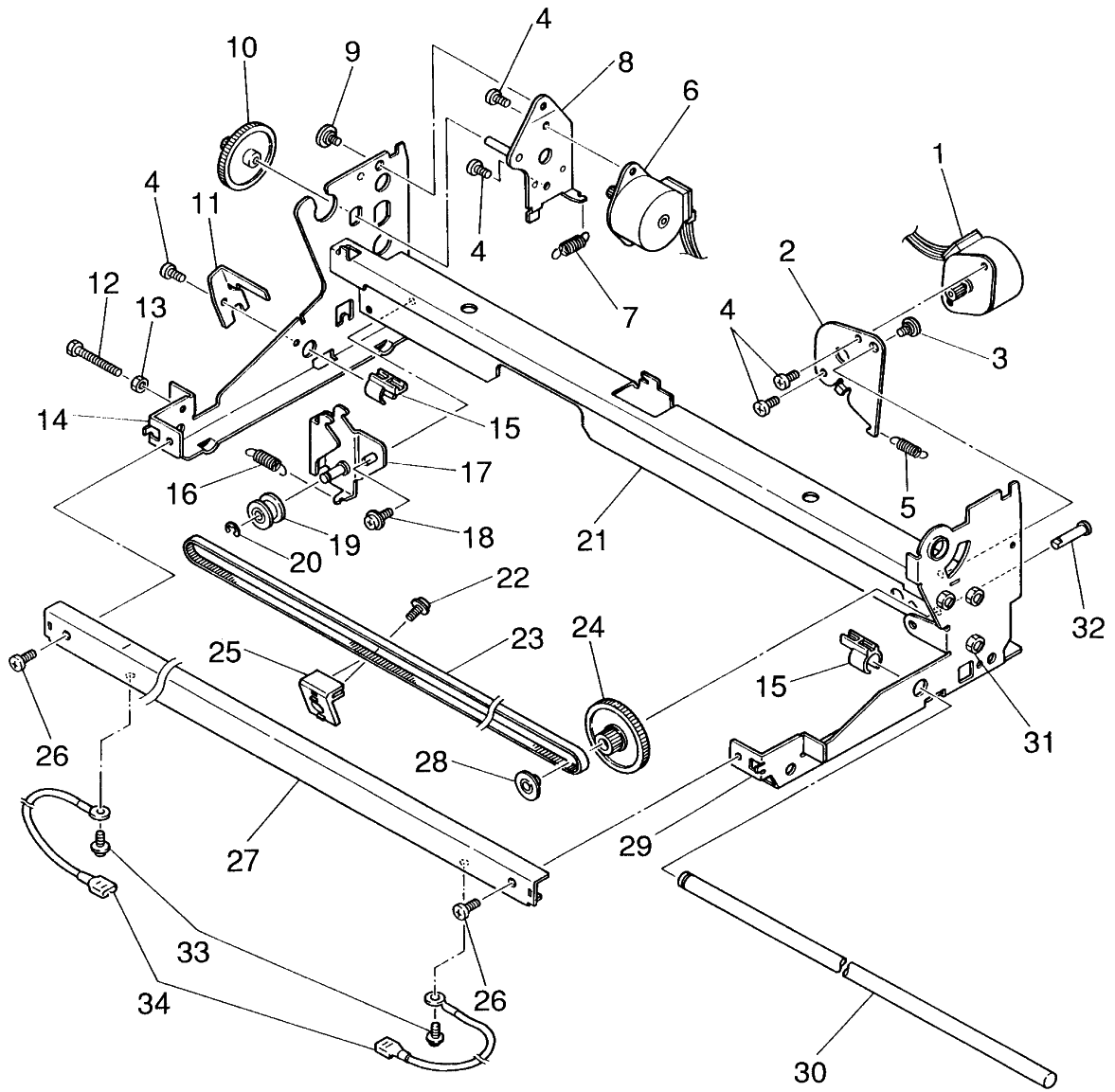
**FUNCTIONAL
GROUP NAME****KEYBOARD****MODEL****WPT160**

REF. NO.	PART CODE	Q'TY	DESCRIPTION
1	150-41040	2	CRANK B
2	060-41060	62	CONTACT SPRING
3	060-41050	62	KEYTOP SPRING
4	150-41050	1	CRANK A
5	060-41070	1	SUB SPRING FOR SPACE BAR
6	150-41010	1	KEYBOARD PANEL
7	999-05707	1	LED (GREEN) SLR34MC (ROHM)
8	999-05640	1	LED (RED) SLR34VC3F (ROHM)
9	060-41040	2	LED CONTACT RUBBER
10	150-41030	1	MEMBRANE SHEET
11	680-00170	1	SCREW M3.0 X 6
12	150-41020	1	KEYBOARD SUPPORT PANEL
			KEYBOARD NO. LIST
13	KTC-21013-22	1 SET	USA
	KTC-21068-22	1 SET	HISPANO
	KTC-21074-22	1 SET	NEW CANADIAN-FRENCH



**FUNCTIONAL
GROUP NAME****PLATEN****MODEL****WPT160**

REF. NO.	PART CODE	Q'TY	DESCRIPTION
1	220-89110	2	RETAINING RING D=6
2	150-61230	1	PLATEN GEAR
3	C50-62310	1	PLATEN WASHER
4	C50-62050	1	PLATEN ARC WASHER
5	060-61220	1	PLATEN JOURNAL
6	150-61210	1	PLATEN
7	150-66010-45	1	PAPER RELEASE LEVER
8	060-61080	4	FEED ROLLER
9	150-61310	1	PAPER PAN
10	150-61320	1	DEFLECTOR SHEET
11	150-61050	1	PAPER RELEASE ARM
12	060-61070	1	PAPER RELEASE SPRING



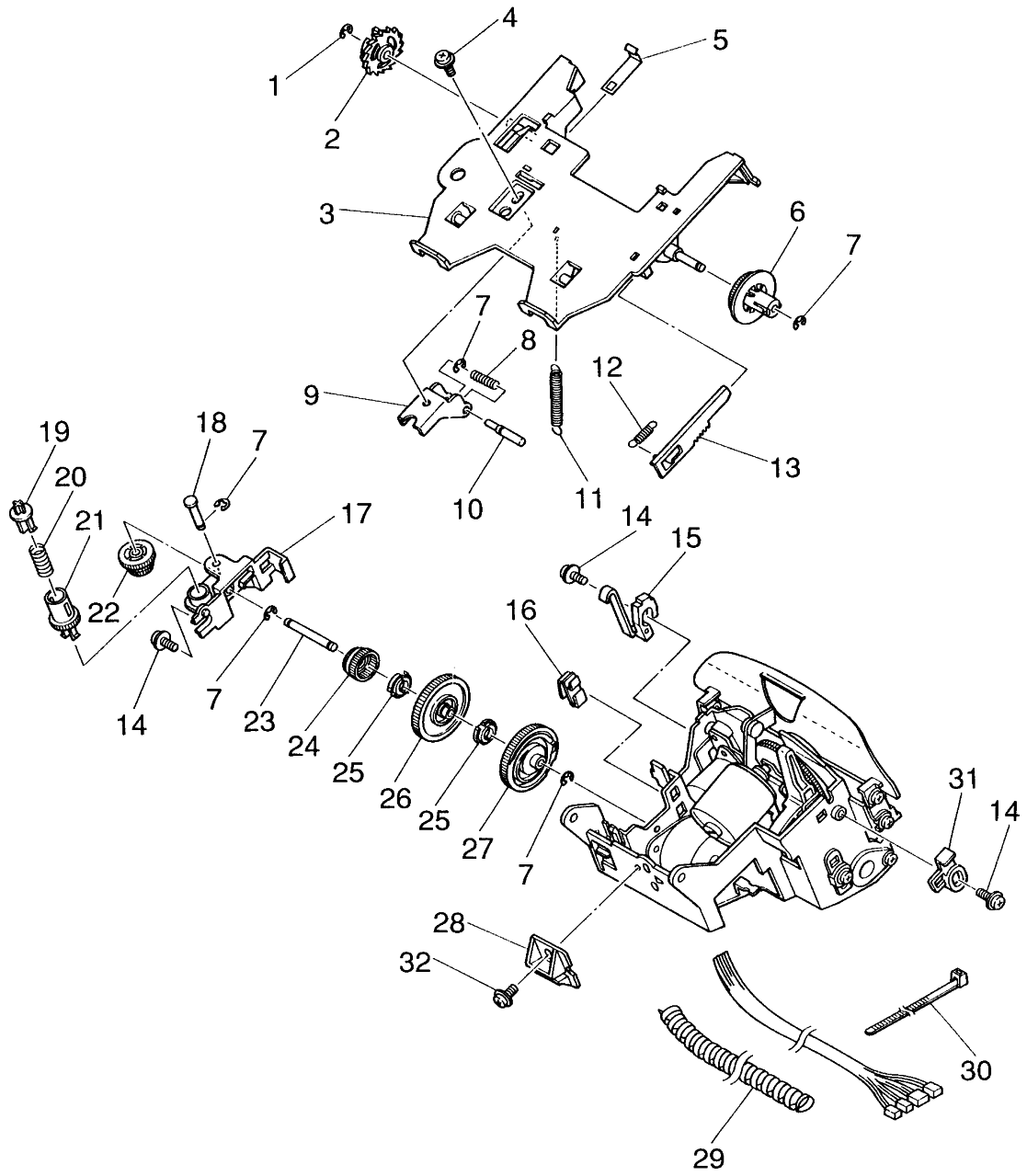
**FUNCTIONAL
GROUP NAME**

LF AND CARRIER DRIVE

MODEL

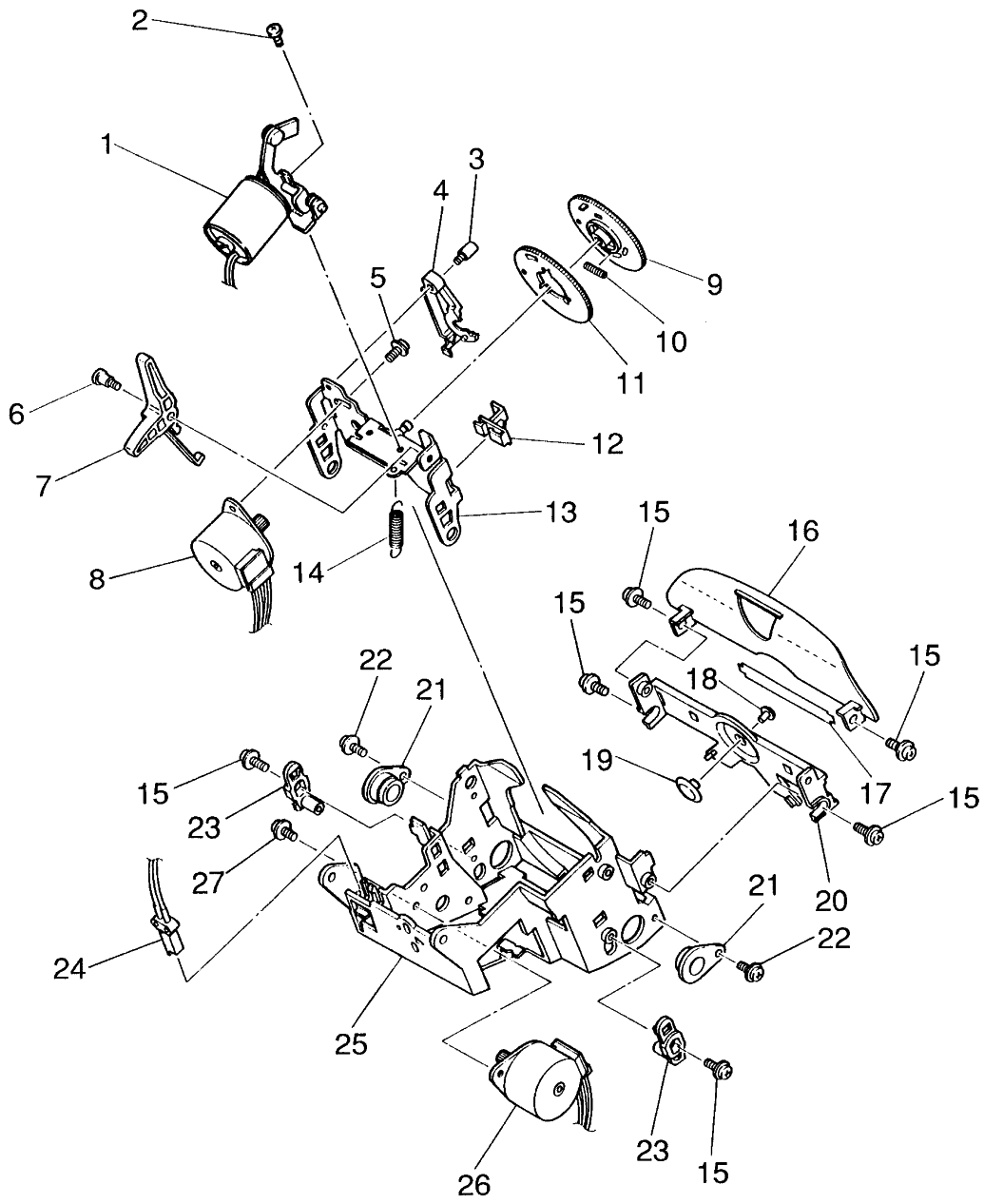
WPT160

REF. NO.	PART CODE	Q'TY	DESCRIPTION
1	150-61010	1	CARRIER MOTOR
2	150-61020	1	CARRIER MOTOR BRACKET
3	070-65071	1	CARRIER MOTOR BRACKET SCREW
4	011-00010	5	SCREW M3.0 X 4
5	150-61030	1	CARRIER MOTOR SPRING
6	150-63010	1	LF MOTOR
7	150-63020	1	LF MOTOR SPRING
8	150-63100	1	LF MOTOR PLATE
9	060-61090	1	LF MOTOR PLATE SCREW
10	060-61040	1	LF GEAR
11	150-60020	1	MAIN SHAFT BRACKET
12	150-62050	1	SCREW M3.0 X 30
13	011-03510	1	NUT M3.0
14	150-62020	1	SIDE FRAME (L)
15	150-60030	2	CARRIER STOPPER
16	150-61070	1	BELT TENSION SPRING
17	060-64100	1	IDLE PULLEY BRACKET
18	551-10040	1	SCREW M3.0 X 5
19	060-64010	1	IDLE PULLEY
20	011-02030	1	RETAINING RING D=2.5
21	150-62010	1	CENTER PLATE
22	581-86100	1	SCREW M3.0 X 6
23	150-61410	1	DRIVE BELT
24	150-61080	1	DRIVE PULLEY
25	150-61420	1	BELT CLAMP
26	011-00121	2	SCREW M4.0 X 6
27	150-62040	1	CARRIER GUIDE RAIL
28	060-61120	1	DRIVE PULLEY CAP
29	150-62030	1	SIDE FRAME (R)
30	150-60010	1	MAIN SHAFT
31	820-90420	6	NUT 4.0 X 7.0 X 3.2
32	060-61130	1	DRIVE PULLEY SHAFT
33	820-90320	2	SCREW M3.0 X 6
34	150-62060	2	FG WIRE



REF. NO.	FUNCTIONAL GROUP NAME	CASSETTE BASE AND RIBBON DRIVE	MODEL	WPT160
REF. NO.	PART CODE	Q'TY	DESCRIPTION	
1	011-02030	1	RETAINING RING D=2.5	
2	330-52030	1	CORRECT FEED RATCHET	
3	150-56100	1	RIBBON CASSETTE BASE	
4	G00-81090	1	SCREW M3.0 X 5	
5	060-56610	1	CASSETTE HOLD SPRING	
6	060-56410	1	CORRECT TAPE HOLDER	
7	011-02020	5	RETAINING RING D=2	
8	150-56230	1	LIFT PIN SPRING	
9	150-56210	1	LIFT SLIDE PLATE	
10	150-56220	1	LIFT PIN	
11	060-50040	1	CASSETTE BASE SPRING	
12	150-56180	1	CORRECT BRAKE SPRING	
13	060-56420	1	CORRECT BRAKE RACK	
14	581-86100	3	SCREW M3.0 X 6	
15	150-51030	1	RATCHET HOOK	
16	150-51050	1	CAM STOPPER	
17	150-55210	1	GEAR HOLD BASE	
18	150-55230	1	RIBBON BEVEL GEAR PIN	
19	150-55260	1	RIBBON FEED PAWL	
20	150-55250	1	RIBBON FEED PAWL SPRING	
21	150-55240	1	RIBBON GEAR	
22	150-55220	1	RIBBON BEVEL GEAR	
23	150-55150	1	RIBBON DRIVE SHAFT	
24	150-55130	1	DRIVE BEVEL GEAR	
25	150-55140	2	DRIVE RATCHET	
26	150-55110	1	RIBBON DRIVE GEAR	
27	150-55120	1	CORRECT CAM	
28	150-51020	1	RAIL SLIDE	
29	060-50020	1	CARRIER CABLE GUIDE	
30	330-70550	1	UNIT BAND	
31	150-51040	1	RIBBON BASE STOPPER	
32	E08-10640	1	SCREW M3.0 X 8	
*	150-50000	1 SET	CARRIER	

*:CARRIER IS COMPOSED OF
CASSETTE BASE & RIBBON DRIVE
AND SELECTION & HAMMER.



**FUNCTIONAL
GROUP NAME**

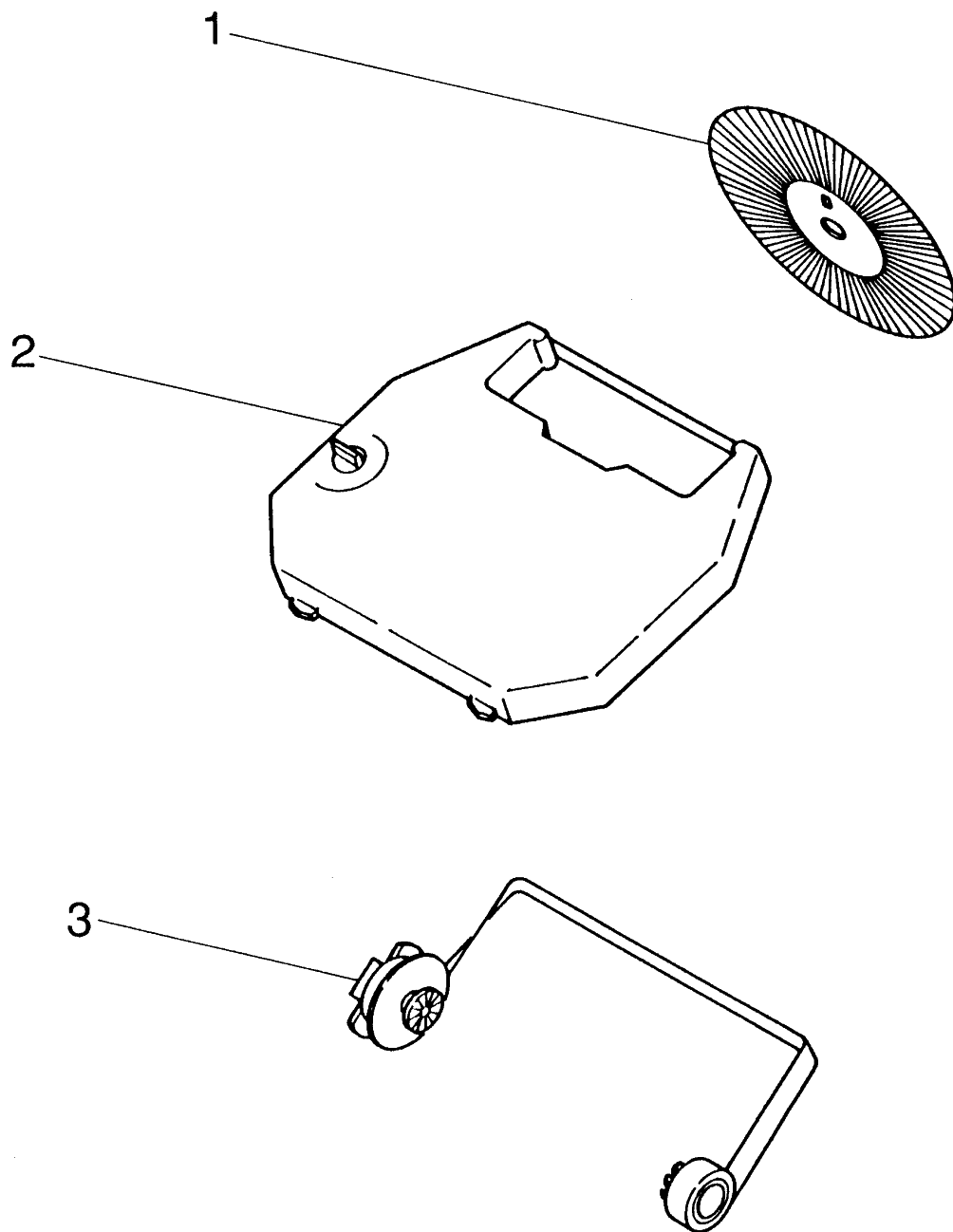
SELECTION AND HAMMER

MODEL

WPT160

REF. NO.	PART CODE	Q'TY	DESCRIPTION
1	150-54000	1	HAMMER SOLENOID
2	100-81010	2	SCREW M2.5 X 4
3	150-53451	1	WHEEL HOOK PIN (USED TO 150-53431)
4	150-53431	1	WHEEL SET HOOK (USED TO 150-53451)
5	551-10040	2	SCREW M3.0 X 5
6	150-53420	1	RELEASE PIN
7	150-53410	1	WHEEL RELEASE LEVER
8	150-53310	1	SELECTION MOTOR
9	150-53210	1	SELECTION GEAR A
10	150-53230	1	BACKLASH SPRING
11	150-53220	1	SELECTION GEAR B
12	150-53320	1	SELECTION GEAR STOPPER
13	150-53100	1	SELECTION PLATE
14	060-50030	1	WHEEL EJECT SPRING
15	581-86100	6	SCREW M3.0 X 6
16	150-52050	1	LINE LOCATOR
17	150-52020	1	FRONT PLATE SPRING
18	150-52040	1	PUSH DISK B
19	150-52030	1	PUSH DISK A
20	150-52010	1	FRONT PLATE
21	060-50010	2	CARRIER BRACKET
22	E08-10640	2	SCREW M3.0 X 8
23	150-51060	2	ADJUSTMENT PLATE
24	060-51401	1	LEAF SWITCH
25	150-51010	1	CARRIER BOX
26	150-51110	1	RIBBON MOTOR
27	G00-81090	2	SCREW M3.0 X 5
*	150-50000	1 SET	CARRIER

*:CARRIER IS COMPOSED OF
CASSETTE & RIBBON DRIVE
AND SELECTION & HAMMER.



**FUNCTIONAL
GROUP NAME**

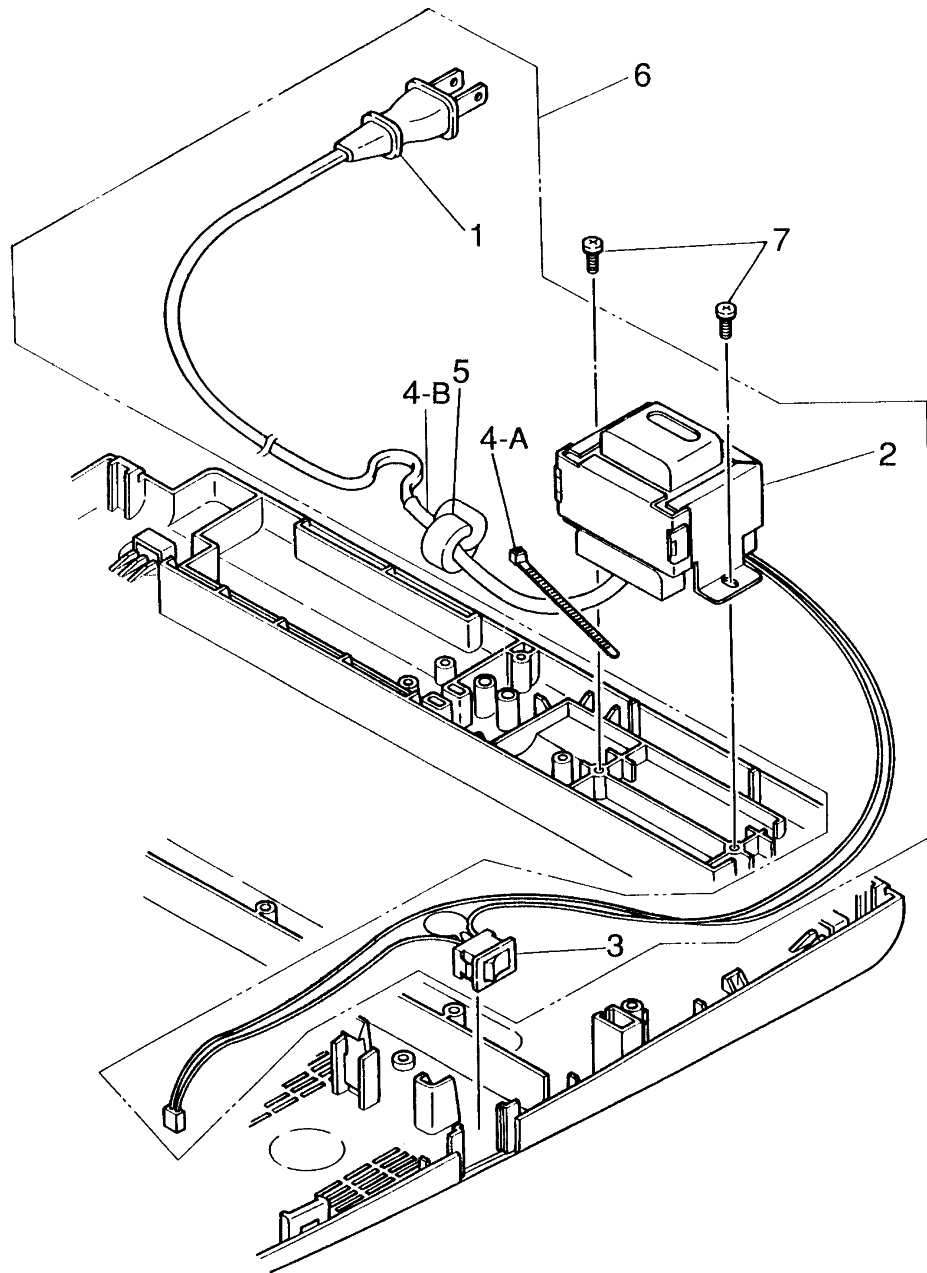
ACCESSORIES

MODEL

WPT160

REF. NO.	PART CODE	Q'TY	DESCRIPTION
1	*	1	PRINTWHEEL
2	100-75206	1	CORRECTABLE RIBBON CASSETTE
3	330-75105-00-FL	1 SET	LIFT-OFF CORRECTION TAPE

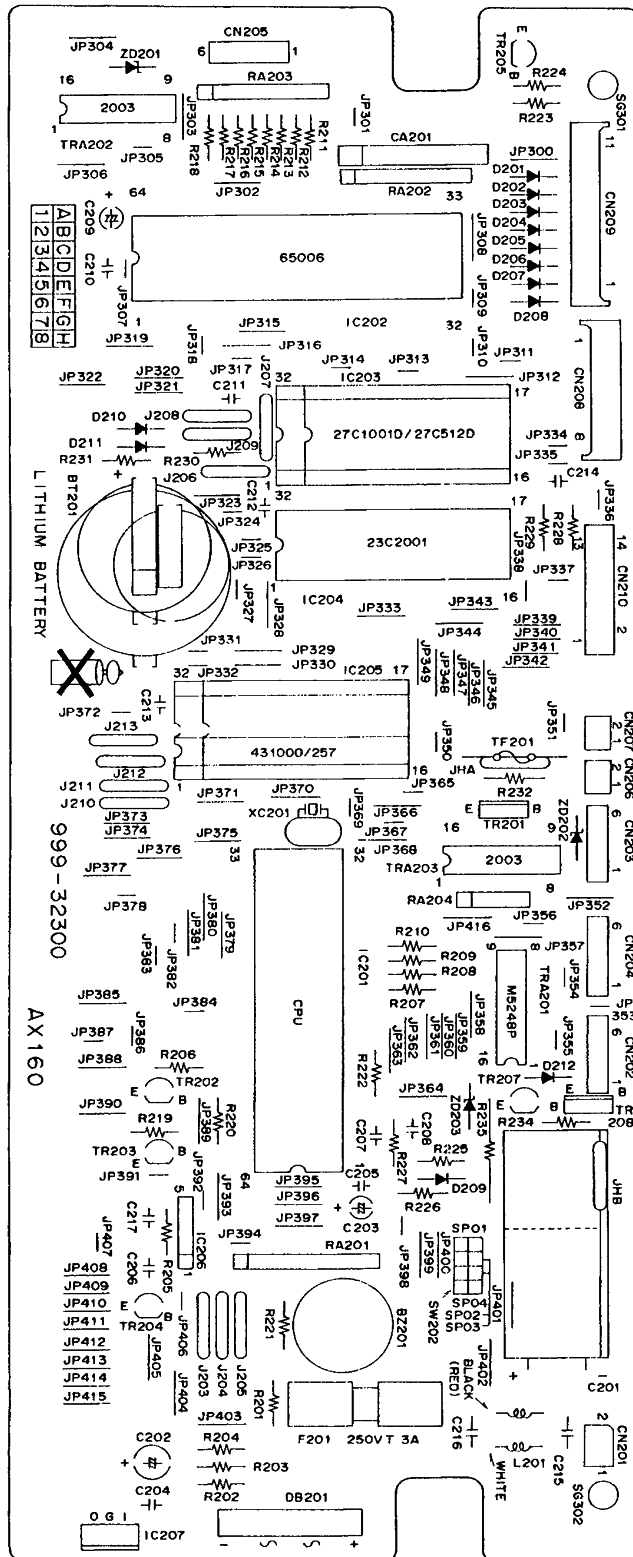
*:PARTS WHICH HAVE THE PART
CODE PRINTED ON THE PART, OR
SEPARATELY INFORMED.



**FUNCTIONAL
GROUP NAME****POWER SUPPLY****MODEL****WPT160**

REF. NO.	PART CODE	Q'TY	DESCRIPTION
1	060-15610	1	POWER SUPPLY CORD FOR UL/CSA
2	150-11020	1	TRANSFORMER (120V)
3	150-11120	1	POWER SWITCH
4	150-18010	1	CORD TUBE (120V)
5	998-05970	1	FERRITE CORE
6	150-12100	1	POWER SUPPLY FOR UL/CSA
7	150-71010	2	SCREW M4.0 X 10

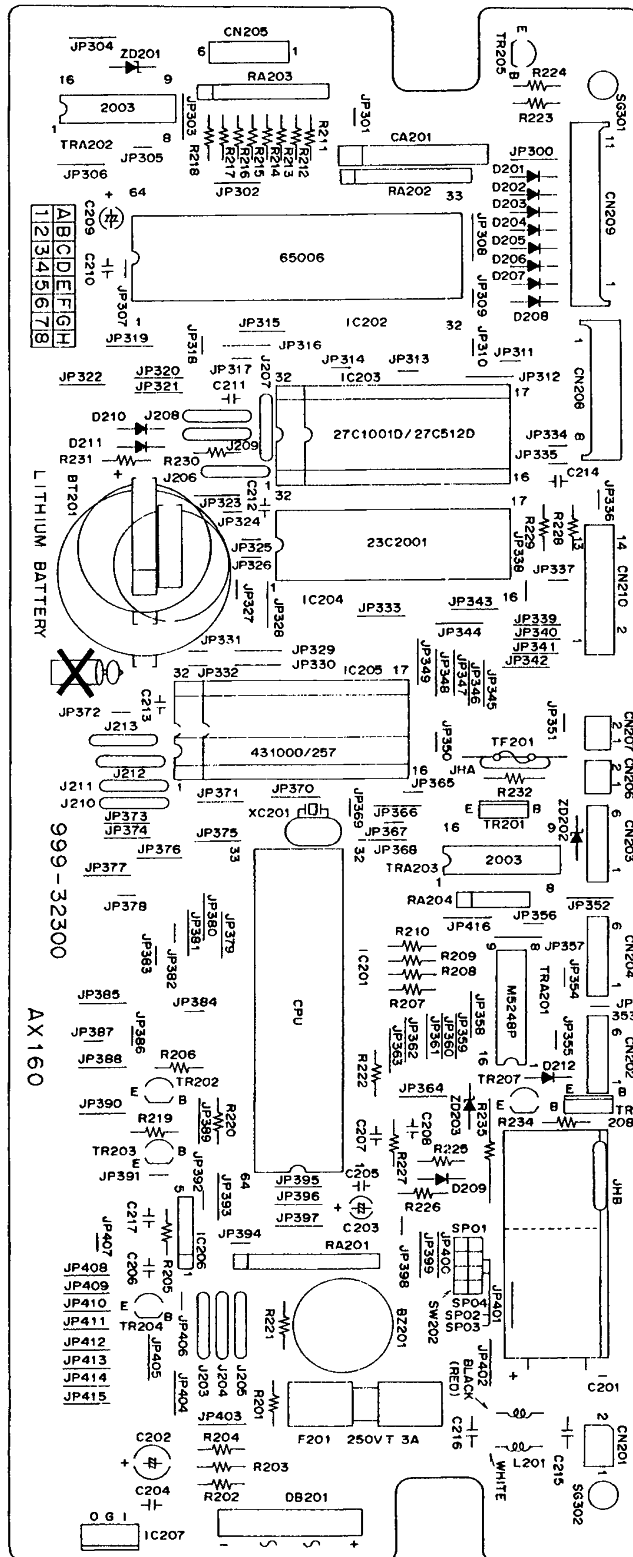
	FUNCTIONAL GROUP NAME	CONTROL PCB	MODEL	WPT160
REF. NO.	PART CODE	Q'TY	DESCRIPTION	
ASS'Y	150-25101	1 SET	CONTROL PCB ASSEMBLY (A-2) FOR 2ND MODELS (EP ROM:512K BIT, S RAM:256K BIT)	
	150-25200	1 SET	CONTROL PCB ASSEMBLY (B-1) (EP ROM:1M BIT, S RAM:256K BIT)	
	150-25900	1 SET	CONTROL PCB ASSEMBLY (H-1) WITH SPELLING CHECK (EP ROM:1M BIT, S RAM:256K BIT, MASK ROM:999-03708)	
	150-25910	1 SET	CONTROL PCB ASSEMBLY (H-2) WITH SPELLING CHECK (EP ROM:1M BIT, S RAM:256K BIT, MASK ROM:999-03690)	
	150-25930	1 SET	CONTROL PCB ASSEMBLY (G-1) WITH SPELLING CHECK (MASK ROM:999-14050, S RAM:256K BIT)	
	150-26000	1 SET	CONTROL PCB ASSEMBLY (C-1) (EP ROM:512K BIT, S RAM:1M BIT)	
	150-26010	1 SET	CONTROL PCB ASSEMBLY (C-2) (EP ROM:1M BIT, S RAM:1M BIT)	
	150-26020	1 SET	CONTROL PCB ASSEMBLY (C-3) WITH SPELLING CHECK (EP ROM:1M BIT, S RAM:1M BIT, MASK ROM:999-03708)	
	150-26030	1 SET	CONTROL PCB ASSEMBLY (C-4) WITH SPELLING CHECK (EP ROM:1M BIT, S RAM:1M BIT, MASK ROM:999-03609)	
	150-26040	1 SET	CONTROL PCB ASSEMBLY (C-5) WITH SPELLING CHECK (MASK ROM:999-14050, S RAM:1M BIT)	
	150-26050	1 SET	CONTROL PCB ASSEMBLY (C-6) WITH SPELLING CHECK (EP ROM:1M BIT, S RAM:1M BIT, EP ROM:999-03690)	
	150-26060	1 SET	CONTROL PCB ASSEMBLY (C-7) WITH SPELLING CHECK (EP ROM:1M BIT, S RAM:1M BIT, EP ROM:999-03708)	



	FUNCTIONAL GROUP NAME	CONTROL PCB	MODEL	WPT160
REF. NO.	PART CODE	Q'TY	DESCRIPTION	
PCB	999-32300	1	CONTROL PCB	
IC201	998-11040	1	CMOS CPU TMP90C141N (TOSHIBA)	
IC202	998-14000	1	GATE ARRAY UPD65006CW-A22 (NEC) (USED TO SPELLING CHECK)	
IC203	999-14050 *	1	MASK ROM FOR G-1 & C-5 ASS'Y EP ROM	
FOR IC203	999-04033	1	IC SOCKET 32 PINS	
IC204	999-03708	1	MASK ROM FOR H-1, C-3 & C-7 ASS'Y UPD23C2001C-060 (NEC): AMERICAN/SPANISH DICTIONARY	
	999-03690	1	MASK ROM FOR H-2, C-4 & C-6 ASS'Y UPD23C2001-051 (NEC): AMERICAN/FRENCH DICTIONARY	
FOR IC204	999-04033	1	IC SOCKET 32 PINS (ONLY H-1, H-2, G-1, C-1, C-2, C-3, C-4, C-5, C-6 & C-7 ASS'Y)	
IC205	998-05760	1	S RAM CXK58267AP-10L (SANYO) (ONLY A-2, B-1, H-1, H-2 & G-1 ASS'Y)	
	998-43290	1	S RAM UPD431000ACZ-70LL (NEC) (ONLY C-1, C-2, C-3, C-4, C-5, C-6 & C-7 ASS'Y)	
IC206	999-04015	1	RESET IC M51953BL (MITSUBISHI)	
IC207	999-04009-00-30	1	REGULATOR IC TA7805S (TOSHIBA)	
	999-04009	1	REGULATOR IC L7805CP (SGS-THOMSOM)	
DB201	999-02955	1	DIODE BRIDGE D3SBA20 (SHINDENGEN)	
D201-211	998-05450	11	DIODE 1S2076A TD (HITACHI)	
D212	330-30310-00-37	1	DIODE 1SR139-200 (ROHM)	
ZD201-203	220-32100	3	ZENER DIODE HZ27-1 (HITACHI)	
TR201	998-11110	1	TRANSISTOR 2SC3786 (SANYO)	
TR202	998-05320	1	TRANSISTOR 2SA1318 (SANYO)	
TR203-205, 207	999-03233-00-12	4	TRANSISTOR 2SC3656 (SANYO)	
TR208	999-03240	1	TRANSISTOR 2SB1272 (ROHM)	
	999-03258	1	TRANSISTOR 2SB1149 (NEC)	
TRA201	999-03412-00-20	1	TRANSISTOR ARRAY M5248P (MITSUBISHI)	
TRA202,203	998-11120	2	TRANSISTOR ARRAY ULN2003A (SANKEN)	

*:REFER TO EP ROM NO. LIST.

	FUNCTIONAL GROUP NAME	CONTROL PCB	MODEL	WPT160
REF. NO.	PART CODE	Q'TY	DESCRIPTION	
XC201	998-46190	1	CERAMIC RESONATOR CSTLS10M0G53-B0 (MURATA)	
BZ201	999-05632	1	BUZZER PKM17EPP-4004 (MURATA)	
C201	998-11840	1	CAPACITOR 6800UF 35V	
C202	999-02790-00-30	1	CAPACITOR 47UF 10V	
C203,209	999-02791-00-30	2	CAPACITOR 10UF 10V	
C204-206, 210-214	999-12502-00-MU	8	CAPACITOR 47000PF 25V	
C207,208	999-02533-00-MU	2	CAPACITOR 220PF 25V	
C217	999-12540-00-MU	1	CAPACITOR 0.22UF 50V	
CA201	999-02794-00-MU	1	CAPACITOR ARRAY 560PF X 8 50V	
R201	330-22300-00-TA	1	RESISTOR 2.2KOHM 1/4W	
R202-204	998-11850	3	RESISTOR 43OHM 1/2W	
R205,220, 230,234	340-30481-00-TA	4	RESISTOR 5.1KOHM 1/4W	
R206,221	650-31160-00-TA	2	RESISTOR 3.3KOHM 1/4W	
R207-218	330-22370-00-TA	12	RESISTOR 220OHM 1/4W	
R219,231	999-00122-00-TA	2	RESISTOR 1.2KOHM 1/4W	
R222,227	650-31170-00-TA	2	RESISTOR 100OHM 1/4W	
R223,224	330-30530-00-TA	2	RESISTOR 330OHM 1/4W	
R225	999-02199	1	RESISTOR 11KOHM 1/4W	
R226	999-12024	1	RESISTOR 2.7KOHM 1/4W	
R228	999-00912-00-TA	1	RESISTOR 9.1KOHM 1/4W	
R229	340-30570	1	RESISTOR 1KOHM 1/4W	
RA201	999-02053	1	RESISTOR ARRAY 10KOHM X 9 1/8W	
RA202	650-31260	1	RESISTOR ARRAY 10KOHM X 8 1/8W	
RA203	998-01430	1	RESISTOR ARRAY 4.7KOHM X8 1/8W	
RA204	998-01420	1	RESISTOR ARRAY 4.7KOHM X4 1/8W	
CN201	220-31290	1	CONNECTOR 2 PINS	
CN202,205	998-11150	2	CONNECTOR 6 PINS	
CN203	998-11160	1	CONNECTOR 6 PINS (RED)	
CN204	998-11170	1	CONNECTOR 6 PINS (YELLOW)	
CN206	999-04719	1	CONNECTOR 2 PINS (RED)	
CN207	999-04728	1	CONNECTOR 2 PINS	
CN208	999-04780	1	CONNECTOR 8 PINS	
CN209	999-04779	1	CONNECTOR 11 PINS	
CN210	998-11240	1	CONNECTOR 14 PINS	



	FUNCTIONAL GROUP NAME	CONTROL PCB	MODEL	WPT160
REF. NO.	PART CODE	Q'TY	DESCRIPTION	
SW202	998-11220	1	JUMPER TERMINAL	
FOR SW202	998-05090	1	SHORT PIN	
F201	998-09330	1	FUSE 3.0A 250V	
FOR F201	220-32280	2	FUSE CLIP	
BT201	999-05649-00-12	1	BATTERY CR2032-T14-1 (SANYO)	
L201	998-11750	1	CHOCK COIL 2943-002402 (OZEKI)	
FOR IC207, DB201	150-21051	1	COOLING PLATE	
	150-21090	2	SCREW M3.0 X 8	
	011-00100	2	SCREW M3.0 X 6	
J207,209, 211,212	999-05629	4	CONTROL PCB ASSEMBLIES FOR A-2, B-1, H-1 & H-2 JUMPER WIRE	
J206,208, 211,212	999-05629	4	CONTROL PCB ASSEMBLY FOR G-1 JUMPER WIRE	
J207,209, 210,213	999-05629	4	CONTROL PCB ASSEMBLIES FOR C-1, C-2, C-3, C-4, C-5, C-6 & C-7 JUMPER WIRE	

**FUNCTIONAL
GROUP NAME**

CONTROL PCB

MODEL

WPT160

REF. NO.	PART CODE	Q'TY	DESCRIPTION
IC203	RQ-03521	1	EP ROM NO. LIST USA
	RQ-04011	1	HISPANO
	RQ-03921	1	NEW CANADIAN-FRENCH
IC203	RQ-04002	1	EP ROM (USED WITH SPELLING CHECK) NO. LIST AMERICAN/HISPANO 3/NEW SPANISH 3
	RQ-04022	1	AMERICAN/FRENCH/NEW CANADIAN- FRENCH
IC203	999-14050	1	MASK ROM (USED WITH SPELLING CHECK) NO. LIST AMERICAN/HISPANO 3/NEW SPANISH 3
	RQ-04053	1	AMERICAN/HISPANO 3/NEW SPANISH 3

**EP ROM (IC203) NO.:RQ-04002,
MASK ROM (IC204) NO.:999-03708 (UPD23C2001C-060)
CONTROL PCB ASSEMBLY:H-1, C-3, C-7**

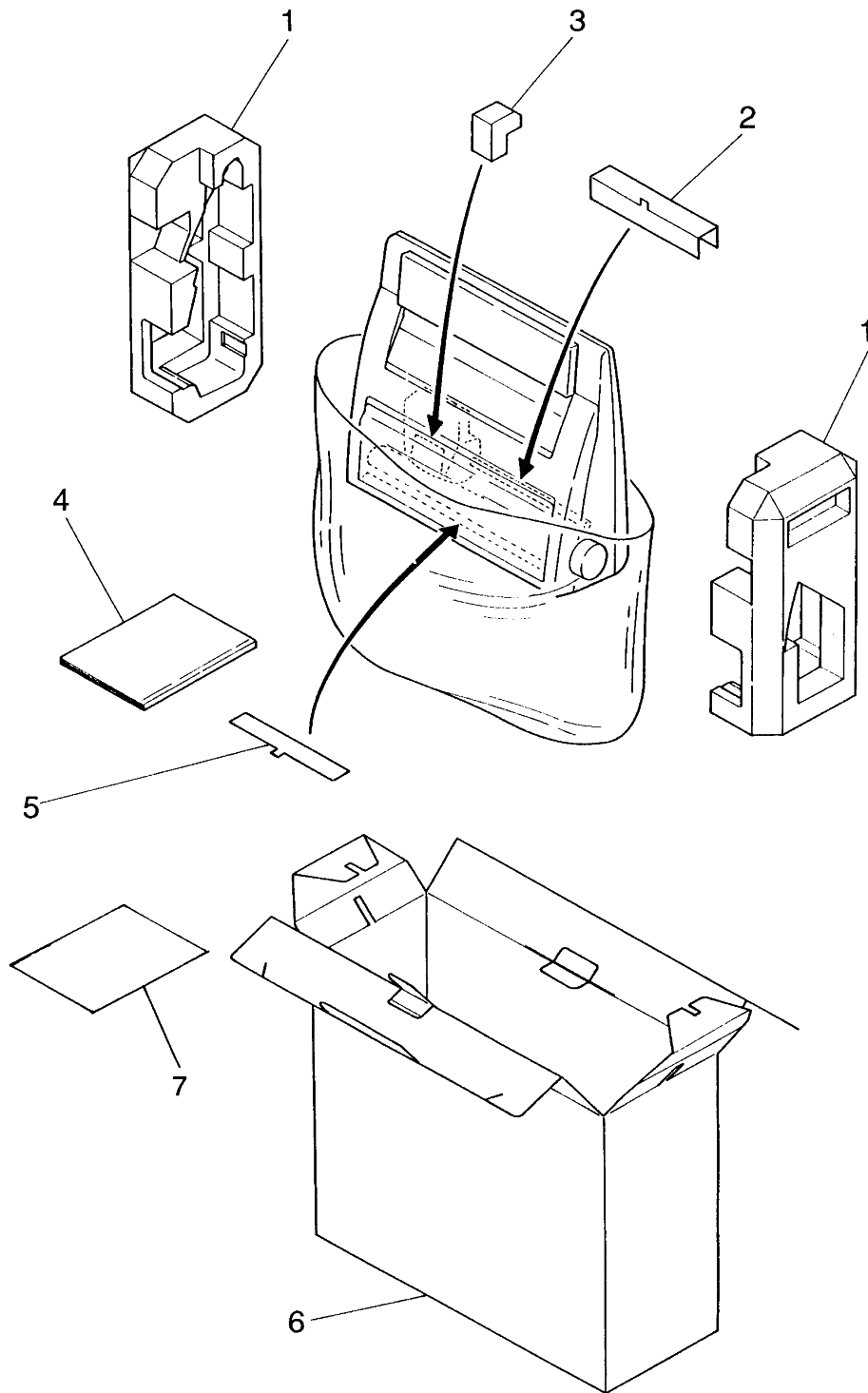
COUNTRY	J203	J204	J205
AMERICAN	YES	YES	YES
HISPANO 3	NO	YES	YES
NEW SPANISH 3	YES	NO	YES

**EP ROM (IC203) NO.:RQ-04022,
MASK ROM (IC204) NO.:999-03690 (UPD23C2001-051)
CONTROL PCB ASSEMBLY:H-2, C-4, C-6**

COUNTRY	J203	J204	J205
AMERICAN	YES	YES	YES
FRENCH	NO	YES	YES
NEW CANADIAN-FRENCH	YES	NO	YES

**MASK ROM (PROGRAM & DICTIONARY) (IC203)
NO.:999-14050 (RQ-04053)
CONTROL PCB ASSEMBLY:G-1, C-5**

COUNTRY	J203	J204	J205
AMERICAN	YES	YES	YES
HISPANO 3	NO	YES	YES
NEW SPANISH 3	YES	NO	YES



	FUNCTIONAL GROUP NAME	PACKING	MODEL	WPT160
REF. NO.	PART CODE	Q'TY	DESCRIPTION	
1	001-93402	1	SIDE PACKING SET	
2	150-80040	1	CARRIER PROTECTOR	
3	150-80030	1	RIBBON CASSETTE PACKING	
4	001-02498	1	INSTRUCTION MANUAL (ENGLISH)	
	001-02499	1	INSTRUCTION MANUAL (FRENCH/SPANISH/GERMAN)	
	001-02500	1	MANUAL FOR SPELLING CHECK	
5	150-81040	1	PLATEN PACKING	
6	001-62294	1	CARTON BOX (ENGLISH)	
7	001-02573	1	WARRANTY SHEET	

Printed in Japan
001-03155-02
041130
AX-160NU