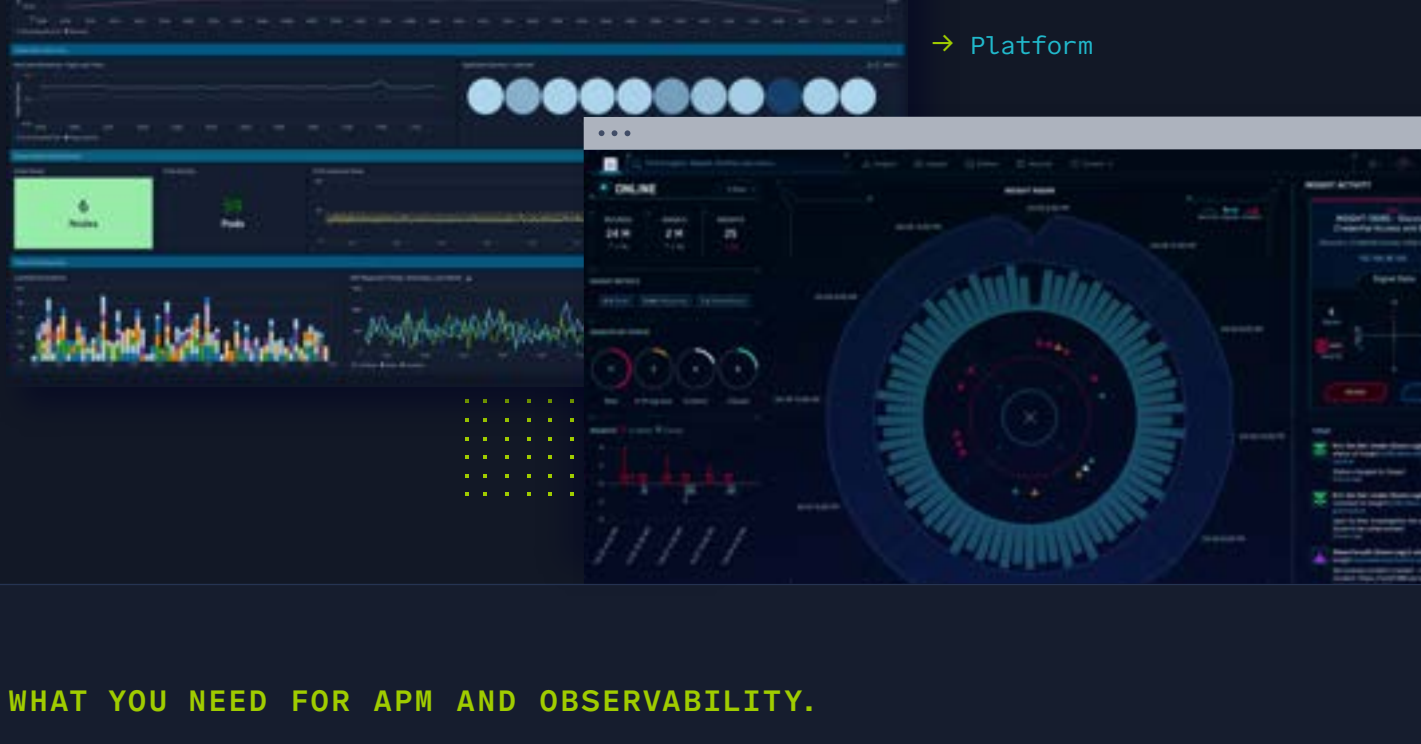


YOU DON'T GET PAID TO SEARCH. YOU GET PAID TO FIND.

## Sumo Logic's unified SaaS analytics platform delivers greater visibility than Datadog.



### WHAT YOU NEED FOR APM AND OBSERVABILITY.

#### Advanced troubleshooting across all telemetry



✓ Sumo Logic built its business by solving the hardest problem from a scale and cardinality perspective: log management. Logs indicate what's happening and are critical to anomaly detection and uncovering the root cause of a problem.



✗ Datadog's heritage is in metrics, which are simple indicators of something wrong. They are insufficient to pinpoint performance issues deep in applications and infrastructure.

#### Log search (query language)



✓ Sumo Logic's query language and patented Log Reduce, Log Compare allow searches across structured and unstructured data, from metrics and traces to logs, without sampling for full fidelity.



✗ Datadog lacks a query language making exploratory analysis difficult. Instead, it correlates sampled data sets using breadcrumbs, which limits data accuracy and end-to-end visibility of digital services.

#### APM: tracing and span analytics



✓ Using a standard analytics engine, Sumo Logic analyzes every trace and span so you can understand your applications' end-to-end performance and behavior.



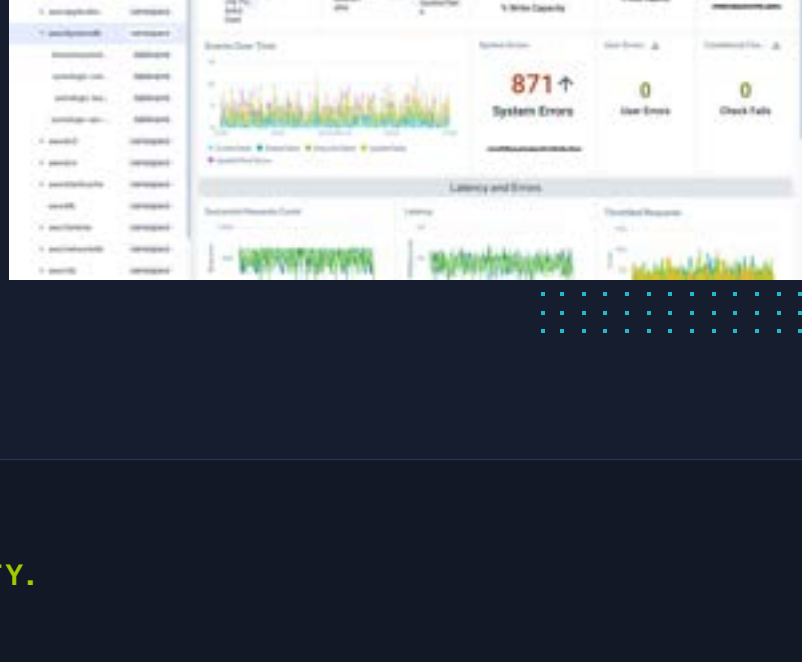
✗ Datadog does not support aggregated analysis of tracing and span data. And since Datadog has no query language, it can't run advanced analysis on top of trace span data.

### Sumo Logic's APM and observability

→ Advanced analytics

→ Powerful query language and user-friendly UX

→ Open source collection



### WHAT YOU NEED FOR SECURITY.

#### Advanced security use cases: SECURITY ANALYTICS, SIEM\*, SOAR\*



✓ Sumo Logic consolidates full-stack observability, security analytics, SIEM and SOAR onto one powerful platform.



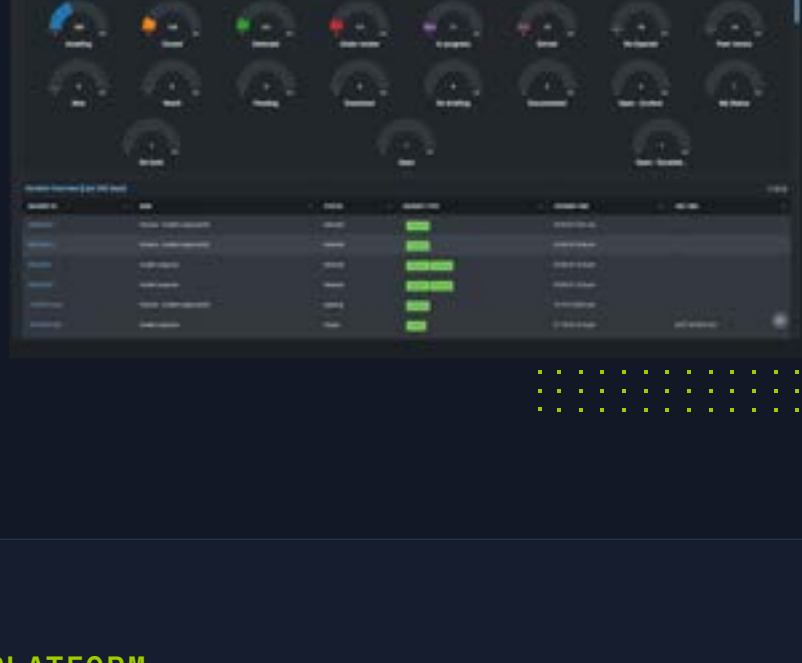
✗ You won't find sophisticated SIEM or SOAR functionality in Datadog.

### Sumo Logic's comprehensive security portfolio

→ Cloud security monitoring & analytics offers deep insights and alerts

→ Cloud SIEM correlates threats to speed investigation

→ Cloud SOAR orchestrates and automates response



### WHAT YOU NEED FROM YOUR PLATFORM.

#### Comprehensive certifications and attestations



✓ Sumo Logic's compliance-ready solutions help customers deliver services that decrease the risk of a security breach.



✗ Datadog is only PCI compliant in one region (US). Sumo Logic is compliant across global regions.

##### Sumo Logic provides:

- SOC 2 Type 2
- PCI
- Privacy Shield
- CSA Star
- HIPAA
- FedRAMP-Moderate

##### Datadog provides:

- SOC 2 Type 2
- CSA Star
- HIPAA
- FedRAMP-Moderate
- PCI

#### Flexible licensing NO COST OVERAGES. NO HIDDEN FEES.

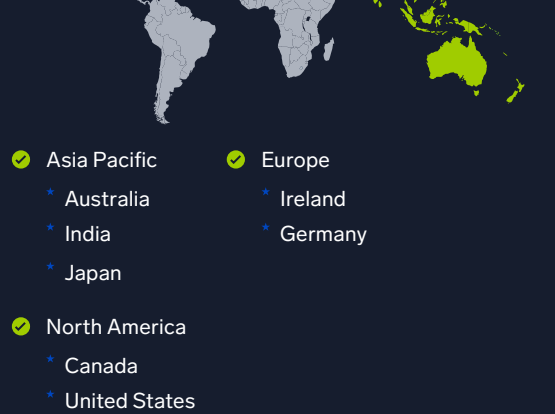


✓ Sumo Logic's flexible and predictable pricing model features data tiering to cost-effectively capture all relevant application telemetry.



✗ Each Datadog product is licensed separately, so while initial prices may be low, they mushroom with Datadog add-ons and hidden fees for retention and custom metrics.

#### Global presence and data residency



- Asia Pacific
  - Australia
  - India
  - Japan
- Europe
  - Ireland
  - Germany
- North America
  - Canada
  - United States



- North America
  - United States
- Europe
  - Germany

#### Free training and support



✓ Sumo Logic offers free training and certifications for beginners to advanced users.



✗ With Datadog you pay more for all training and support modules.

\* SIEM (security information and event management) \* SOAR (security orchestration, automation and response)

Try the only cloud-native solution for all your observability and security needs.

Sumo Logic. [ Championing your digital experience. ]

[Learn more](#)