

SunPower® Helix® T-Type Carport



Superior performance, value and design

SunPower® Helix® Carports are designed by an experienced team of in-house architects and engineers to reduce energy costs, enhance the value of your real estate and strengthen your commitment to sustainability.

Optimized for financial returns

SunPower's single-incline canopy uses industry-leading design techniques to increase production yield, lower material and installation costs and maximize your return on investment.

A track record of success

With more than 100 MW of carport installations nationwide, SunPower knows what it takes to meet milestones, keep your project on schedule and minimize any disruption to your organization.

SunPower® Helix® T-Type Carport System

The only fully integrated single-tilt carport structure on the market

Elegant, durable design is uniquely engineered to maximize the benefits of SunPower® solar panels and the Helix electrical and mechanical system architecture.

Industry-leading solar panels

Reliability and unmatched efficiency rates combine to deliver up to 60% more energy in the same space over 25 years.¹

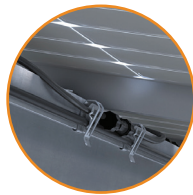


- High efficiency
- High energy production
- 40-year projected useful life²
- Unparalleled for durability³



Powerful EnergyLink® Monitoring Software

Gather real-time insights for intuitive energy management.



Simplified Electrical System

Streamlined architecture minimizes system complexity.



Integrated Cable Management

Keeps cables secure and protected from abrasion and wear.



Pre-Configured Inverter Power Station

Preconfigured inverter improves installation efficiency.

Innovative Options



Water Management

Manages water runoff on the underside of the canopy, providing the potential for re-use in onsite irrigation.



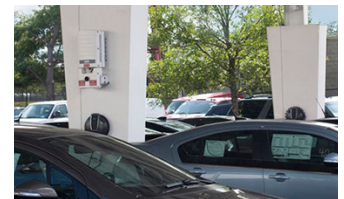
Battery Storage

Couples with canopies to achieve demand charge savings and better utilization of energy produced.



Lighting

Integrates energy-efficient LED lighting within canopies to ensure parking areas stay well lit at night.



EV Charging Compatible

Enhances functional use of carports for customers and employees, while promoting EV adoption.

Warranties

- | | | | |
|------------------------|----------|-----------------------------------|----------|
| • SunPower panels | 25 years | • Inverter ⁴ | 10 years |
| • Helix mechanical BOS | 25 years | • SunPower carport structure | 25 years |
| • Helix electrical BOS | 10 years | • EnergyLink® monitoring hardware | 10 years |

¹ SunPower 450 W, 22.2% efficient, compared to a Conventional Panel on same-sized arrays (330 W multi, 17% efficient, approx. 2 m²), 5% more energy per watt (based on PVSIM runs for avg US climate), 0.5%/yr slower degradation rate (Jordan, et. al. Robust PV Degradation Methodology and Application. PVSC 2018).

² SunPower Module 40-year Useful Life. SunPower whitepaper. 2013.

³ Jordan, et. al. Robust PV Degradation Methodology and Application. PVSC 2018.

⁴ Manufacturer pass-through warranty. Warranties of 15 or 20 total years are available directly through manufacturer.