

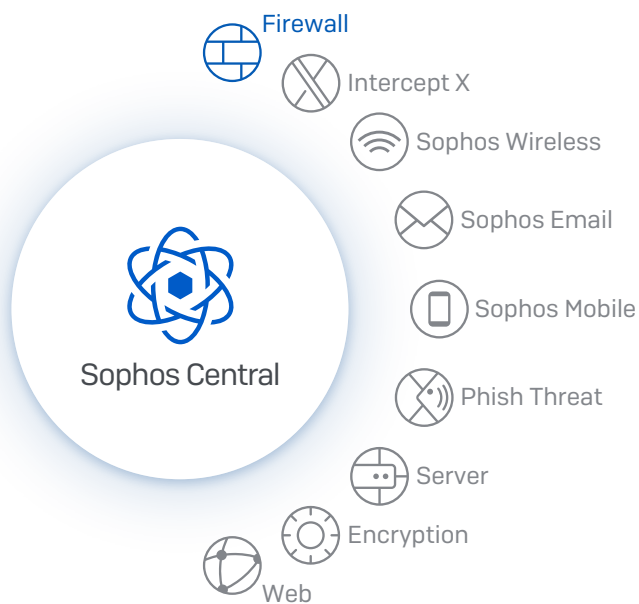
## Sophos Central Firewall

### Sophos Central Firewall Management and Reporting

Sophos Central is the ultimate cloud management and reporting ecosystem for your Sophos Firewall estate. Whether you are managing a single firewall or hundreds, Sophos Central makes it easy – and free. Take advantage of zero-touch deployment, group firewall management, and flexible reporting tools - all at no extra charge.

#### The ultimate security ecosystem

Sophos Central is your gateway to all your Sophos products, enabling you to have the best protection at every point. You also get integrated and synchronized information sharing and threat response, all managed from a single easy-to-use cloud console that delivers unmatched visibility and insight.

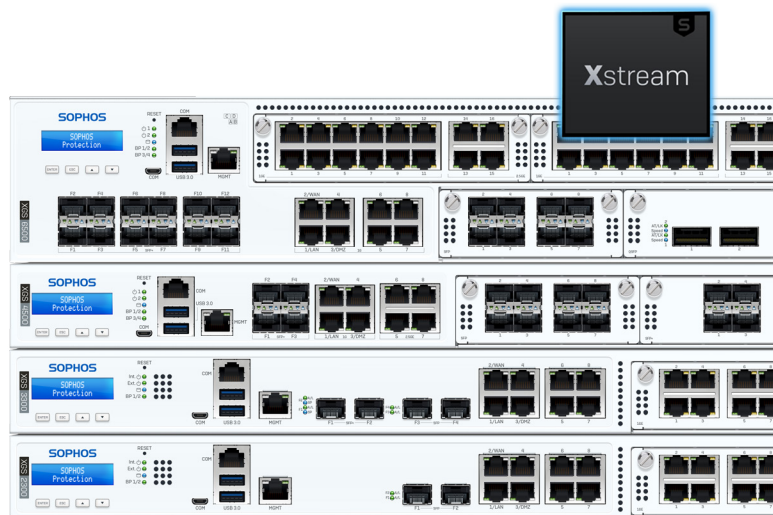


#### Synchronized Security

Sophos Central is your one and only console for managing Sophos Synchronized Security. You can manage and deploy Sophos Intercept X to your endpoints, servers, and mobile devices, while also deploying Sophos Firewalls or SD-WAN devices to your various branch office or remote locations. Then, put your cybersecurity on autopilot and use Sophos Central to monitor and manage everything from a single pane of glass.

#### Group firewall management

If you're managing multiple firewalls, keeping them consistent, synchronized, and up to date can be a big challenge. Sophos Central makes it simple. Powerful group management options enable you to easily group firewalls together to keep their group policy synchronized. Simply make a change to the group policy once, and it will be automatically synchronized across all firewalls in the group, helping ensure your network is consistent and compliant.



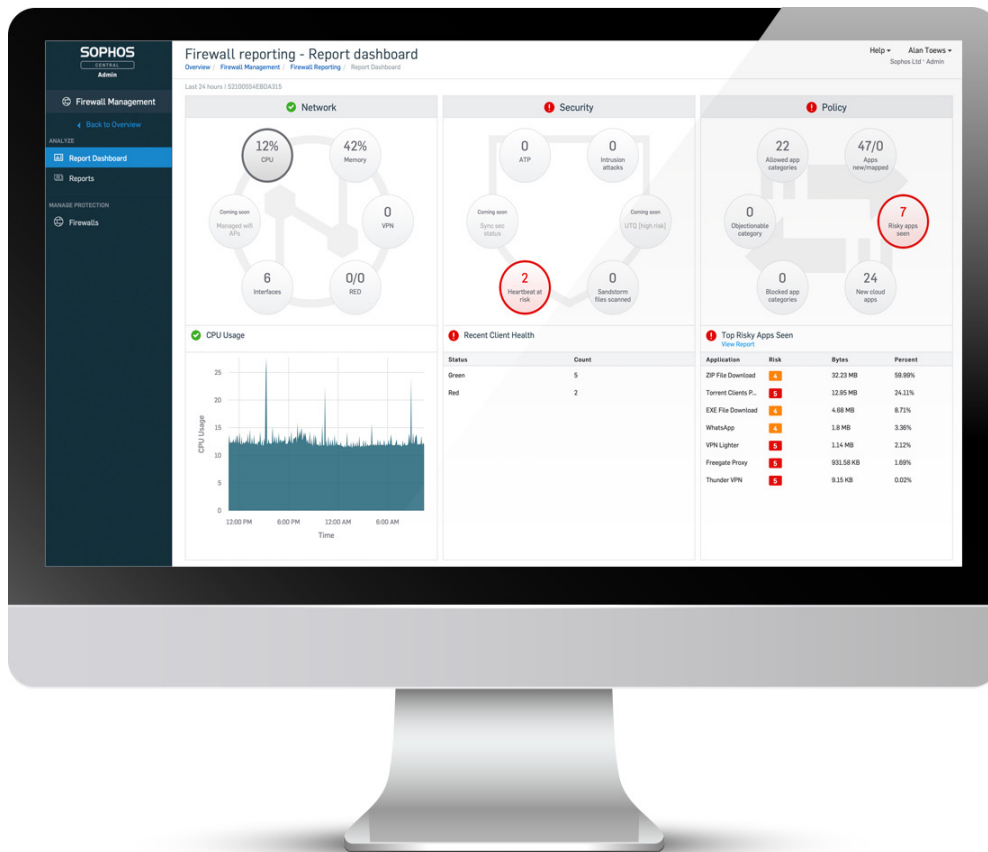
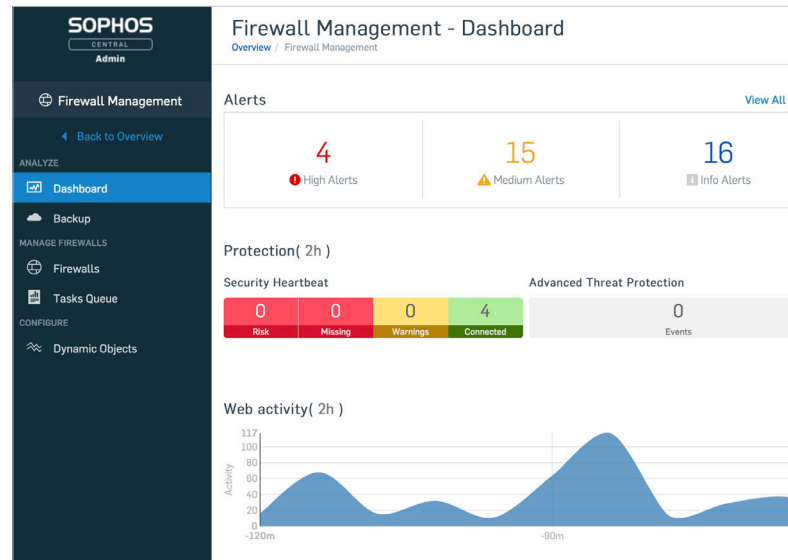
## Sophos Central Firewall

### Network monitoring

Sophos Central enables you to stay completely informed with convenient at-a-glance dashboard insights into all your firewalls, their status, and their utilization. You will also know instantly about any active threats and security alerts and you can monitor your VPN and SD-WAN device status, as well as any compliance risks.

### Zero-touch deployment

Sophos Central enables you to deploy new firewall devices without having to touch them. You can perform the initial setup and configuration in Sophos Central and then export the configuration. Someone on-site starts the new Sophos Firewall device with the configuration loaded on a flash drive connecting the firewall to Sophos Central, where you can then finish the configuration remotely.





### How to buy

Sophos Central Management and Central Firewall Reporting are included with Sophos Firewall running v18 and newer firmware at no additional charge. Licenses to add additional reporting features and storage capacity for Central Firewall Reporting to extend the data retention period can be purchased with a CFR Advanced license. The Xstream Protection bundle for Sophos Firewall includes CFR Advanced with 30-days storage at no extra charge. Log data is stored on a first in, first out (FIFO) basis. See the table below for more information.

FEATURES	CFR	CFR ADVANCED
Data retention	Limited storage capacity – up to seven days of retention	Scalable storage capacity - up to 365 days of retention
Syslog search and view	Yes	Yes
Syslog data storage in Sophos Central	Yes	Yes
On-demand reporting in Sophos Central	Yes	Yes
Report across multiple firewalls	No	Yes
Save, export, and schedule reports	No	Yes
XDR/MTR connector	No	Yes

FEATURES	CFR	CFR ADVANCED
Pricing and Licensing	No additional cost – perpetual use	Purchase added data storage per firewall

### Features list and technical specifications

#### Supported Firewalls

- › Sophos Firewalls running v18 or later firmware, including hardware, software, virtual, and cloud
- › Scheduled firmware updates requires SFOS v18 MR3 or later

#### Firewall Management

- › Group firewalls to keep group policy and setting synchronized
- › High-Availability (HA) support
- › Backup file management
- › Firmware updates from Sophos Central
- › Schedule Firmware updates for any date/time
- › Zero-touch deployment using a USB flash drive
- › Task queue tracks all firewall group synchronization activity for monitoring and auditing changes

#### Log View and Search

- › Search and retrieve logs against archived logs administration
- › Web-based management console
- › Report dashboard for quick at-a-glance view of health
- › Reports accessible from any location using a standard web browser

#### Firewall Reporting

- › Extensive built-in report modules with customization tools
- › Report across individual firewalls, multiple firewalls, groups, or all firewalls (CFR Advanced only)
- › Save, export or schedule reports (CFR Advanced only)
- › Standard reports: bandwidth usage, application usage, web usage, firewall, ATP, geo-activity, IPS, Sandstorm events, and more
- › Multi-format reports: tabular, graphical
- › Custom and special reports with granular search options
- › XDR/MTR Connector to integrate Sophos Firewall with Sophos XDR and Managed Threat Response Service (CFR Advanced only)

Try it now for free

Register for a free 30-day evaluation at [sophos.com/firewall](https://sophos.com/firewall)

United Kingdom and Worldwide Sales  
Tel: +44 (0)8447 671131  
Email: [sales@sophos.com](mailto:sales@sophos.com)

North American Sales  
Toll Free: 1-866-866-2802  
Email: [nasales@sophos.com](mailto:nasales@sophos.com)

Australia and New Zealand Sales  
Tel: +61 2 9409 9100  
Email: [sales@sophos.com.au](mailto:sales@sophos.com.au)

Asia Sales  
Tel: +65 62244168  
Email: [salesasia@sophos.com](mailto:salesasia@sophos.com)