

In this edition

- Updates on our recent actions supporting emergency response organizations affected by the floods in Kenya and Brazil.
- How [mondayERT.org](https://monday.com/ert.org) supported Chilean NGOs during the wildfires at scale.

If you're looking to enhance your impact during emergencies, we invite you to join our emergency response revolution by partnering with us!

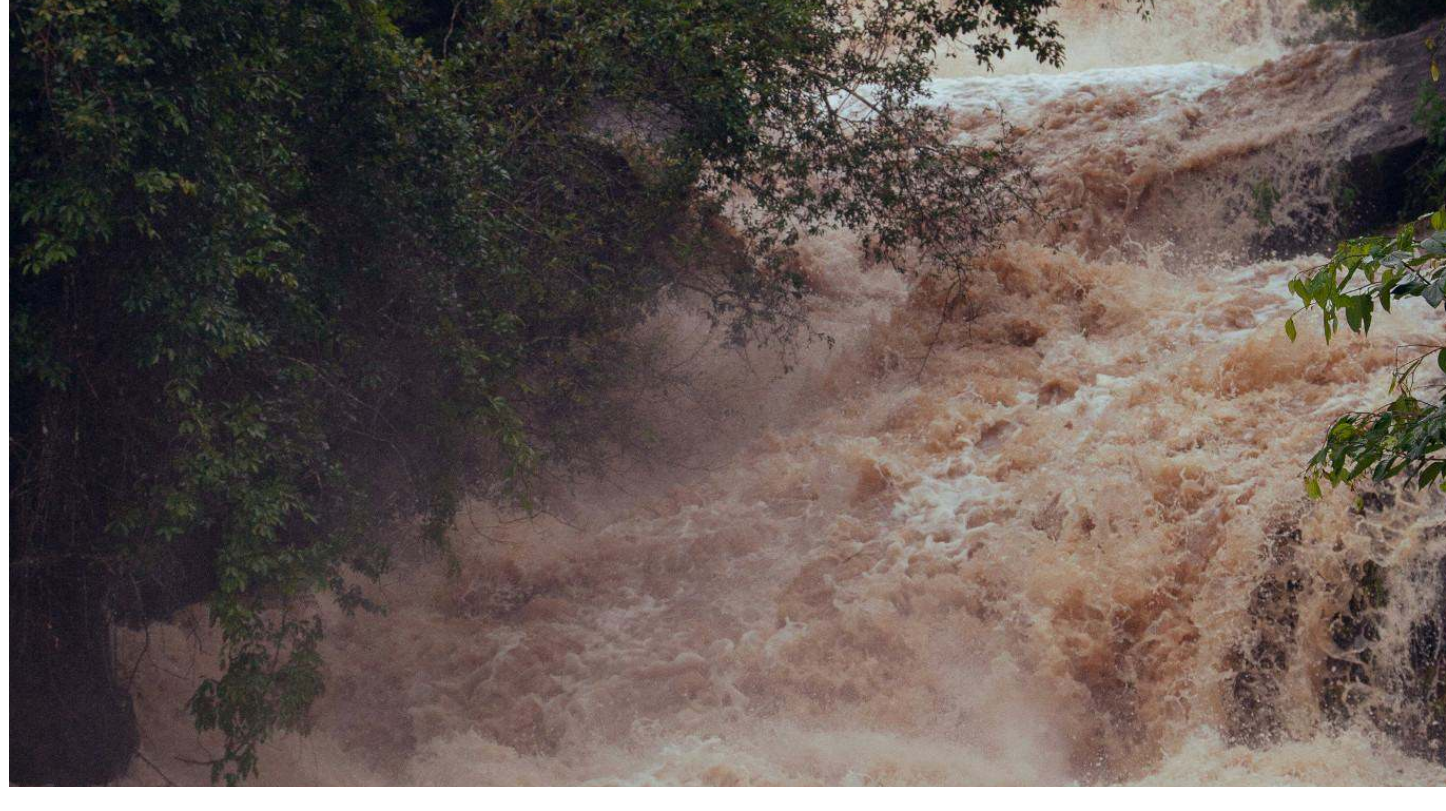
[FREE HERO PLAN](#)

[CHECK ELIGIBILITY](#)

DISASTER DISPATCH

Highlighting the ERT's most recent actions and the impact it had on aid organizations.

Brazil floods



The event: Since April 2024, heavy rainfall and flooding in the southern state of Rio Grande do Sul have become the state's worst weather-related emergency, with more than two million people affected

The response: The ERT is supporting aid organizations with emergency management digital tools.

We are ready to support any response initiative that needs us with pro bono monday.com licenses and rapid implementation.

If you know of any disaster response initiatives that are in the field and need digital aid, please send them the form below.

[Form](#)

Kenya floods



The event: After several years of extreme drought the country experienced heavy rains due to the El Niño phenomenon, resulting in extraordinary floods.

The response: The ERT deployed to Kenya at the flood onset, supporting a local NGO with tools to collect, analyze, and visualize real-time information efficiently and effectively.

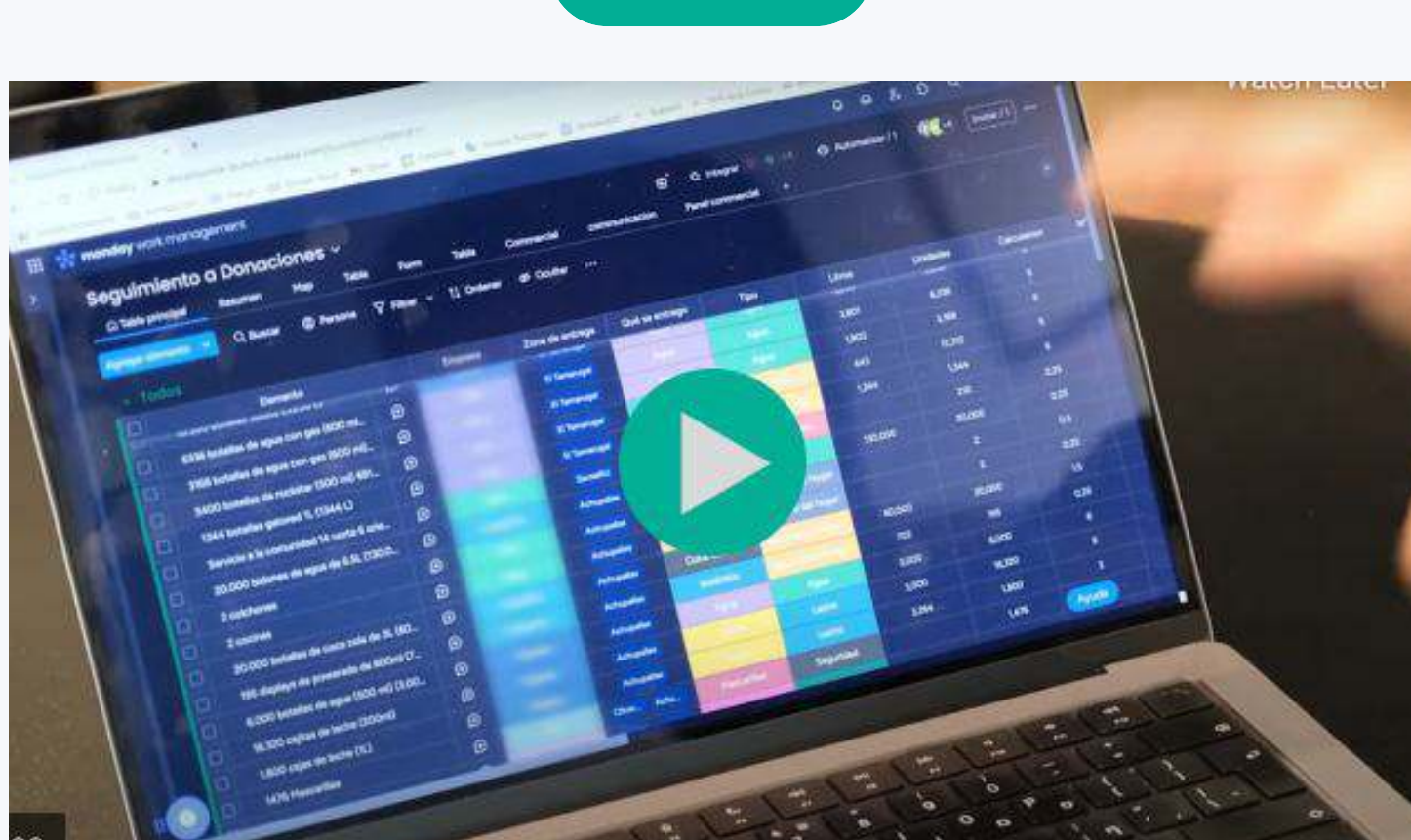
The impact: With ERT's digital aid, the organization conducted over 350 assessments, capturing data on over 95,000 affected community members within a few days.

How mondayERT.org supported Chilean NGOs at scale during the wildfires

In February, the [mondayERT.org](https://monday.com/ert.org) supported various Chilean emergency response NGOs with digital solutions and tools following the wildfires in Viña Del Mar, Chile.

The organisations used monday.com to quickly and efficiently manage their response, coordinating volunteer registrations, food and aid distributions, food bank management, support to small businesses in vulnerable communities, laundry services for displaced persons, and much more.

[READ MORE](#)



The integration of monday volunteers, local Channel Partners, and a strong local presence, along with a flexible and scalable product, enabled aid organizations to save resources, enhance efficiency, secure more donations, and ultimately make a greater positive impact on more lives.

JOIN THE TRANSFORMATION

Are you a disaster response organization looking to enhance your impact during emergencies? The ERT at monday.com is here to partner with you and provide you with the digital products and technical expertise and services you need to be fully prepared.

Don't miss out on the opportunity to be part of the emergency response revolution! Get in touch with us and find out how we can work together to be fully prepared and respond to emergencies in the most efficient way.

[Contact us](#)

[Subscribe to our newsletter](#)

[Visit our website](#)