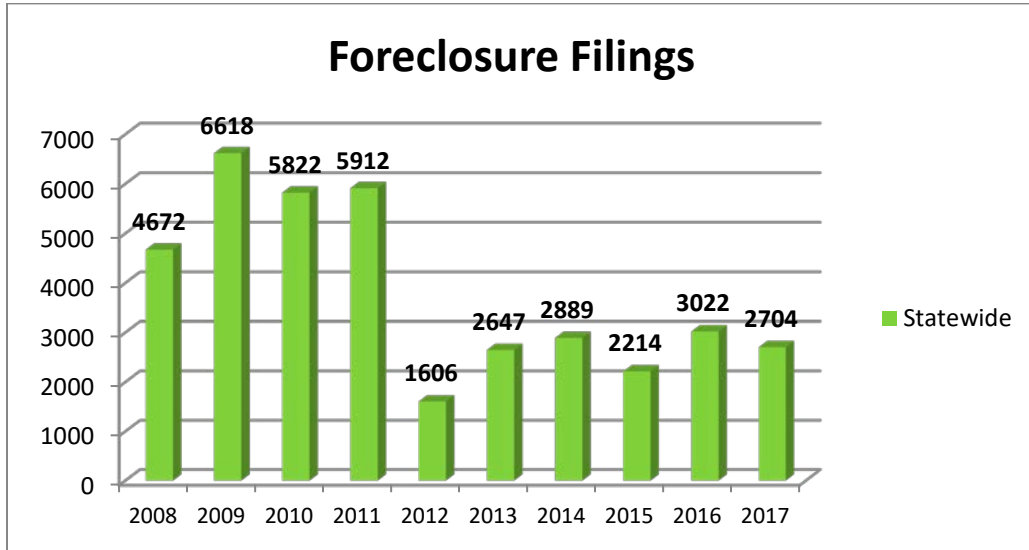
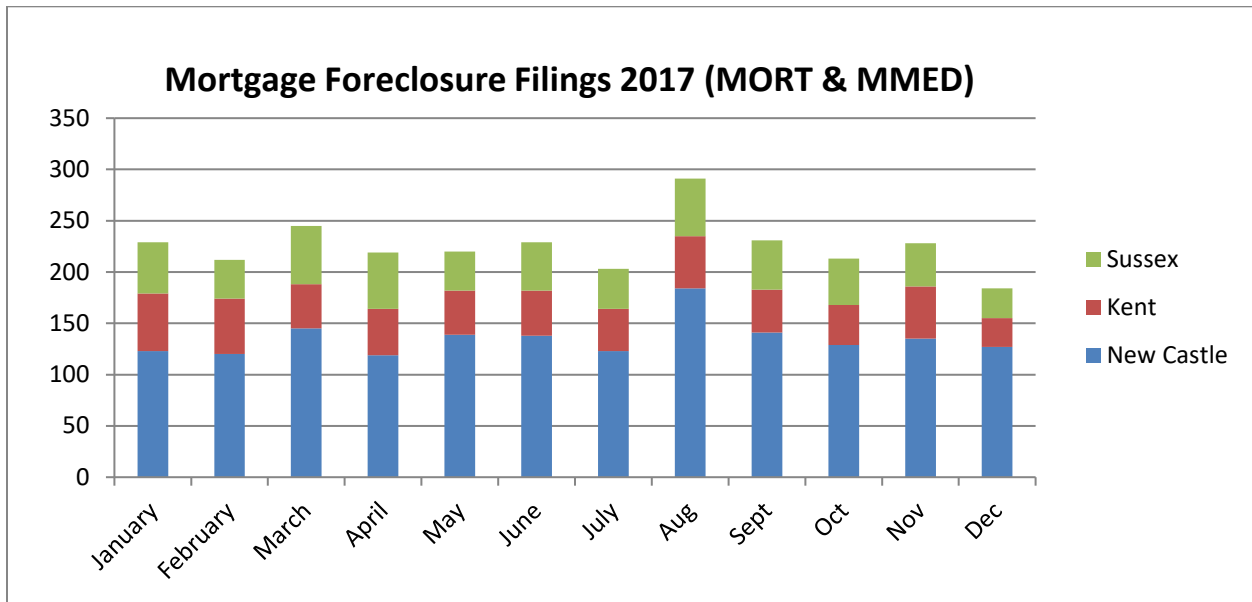


# Delaware Foreclosure Data: Third & Fourth Quarter 2017

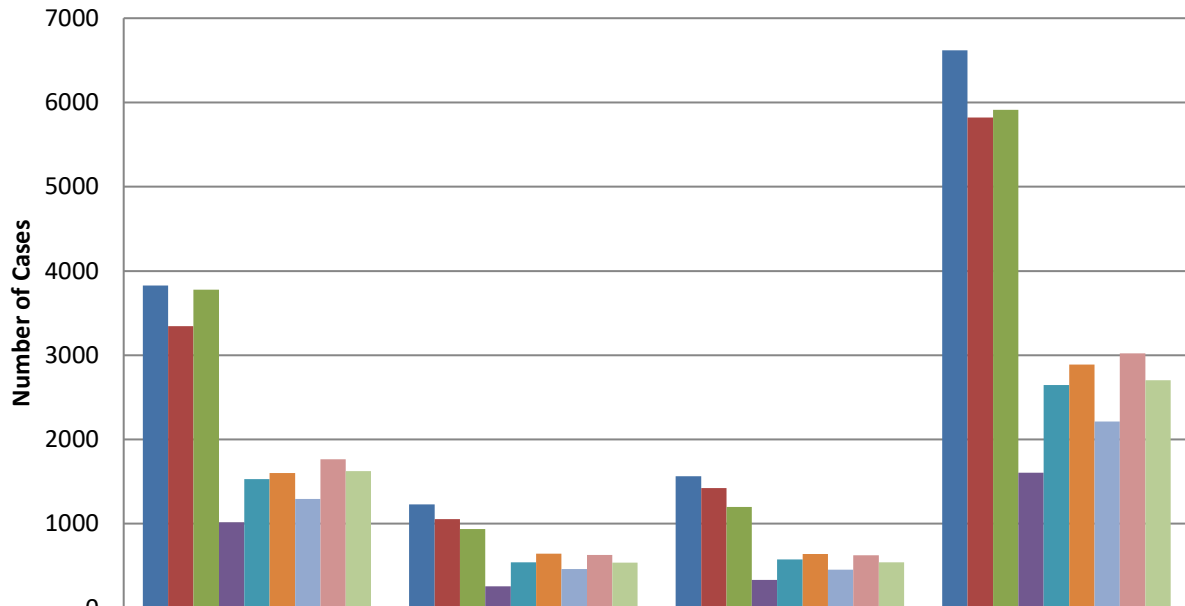


\* MMED – Foreclosure actions eligible for the Automatic Residential Mortgage Foreclosure Mediation Program; MORT – Foreclosure actions ineligible for the Mediation Program.

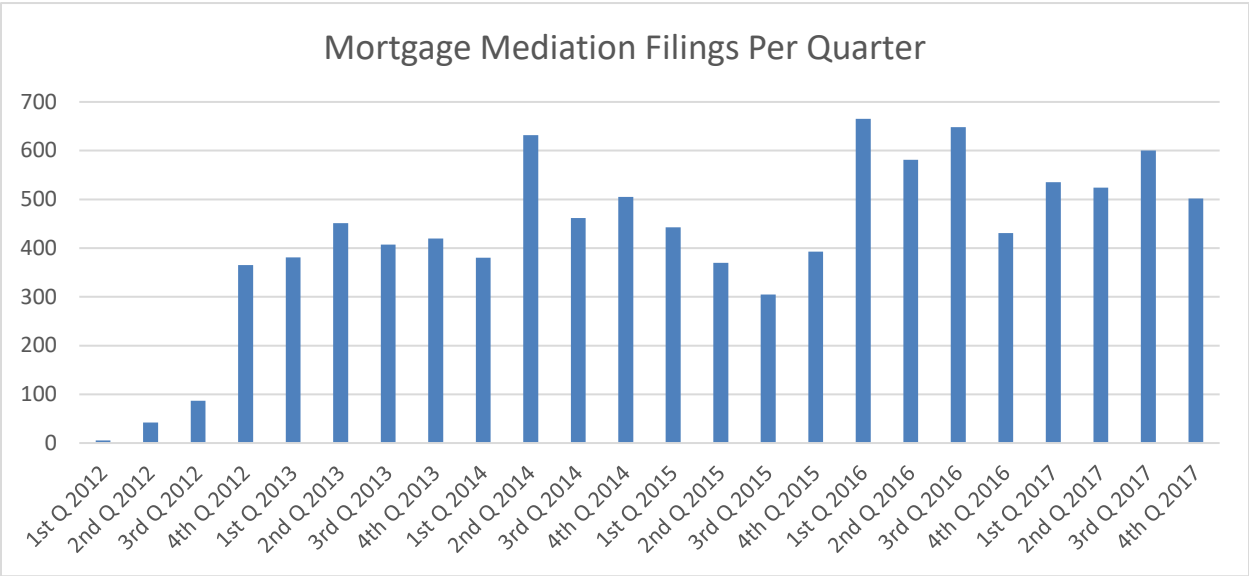
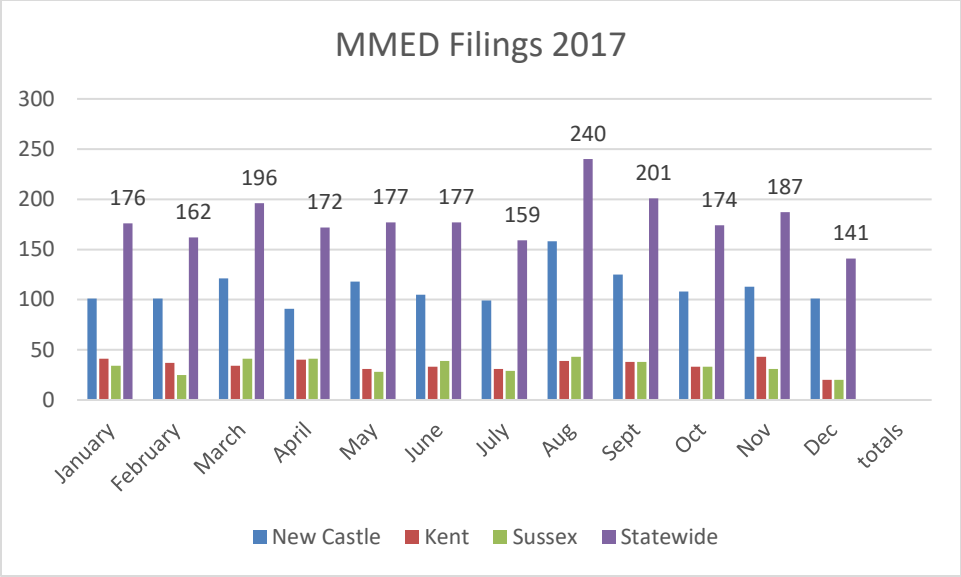


All data is compiled as of December 31, 2017

## Historical Foreclosure Filings by County



|        | New Castle | Kent | Sussex | Statewide |
|--------|------------|------|--------|-----------|
| ■ 2009 | 3828       | 1228 | 1562   | 6618      |
| ■ 2010 | 3344       | 1055 | 1424   | 5823      |
| ■ 2011 | 3778       | 936  | 1198   | 5912      |
| ■ 2012 | 1016       | 256  | 334    | 1606      |
| ■ 2013 | 1528       | 544  | 575    | 2647      |
| ■ 2014 | 1602       | 646  | 641    | 2889      |
| ■ 2015 | 1296       | 463  | 455    | 2214      |
| ■ 2016 | 1766       | 631  | 625    | 3022      |
| ■ 2017 | 1623       | 537  | 544    | 2704      |



All data is compiled as of December 31, 2017