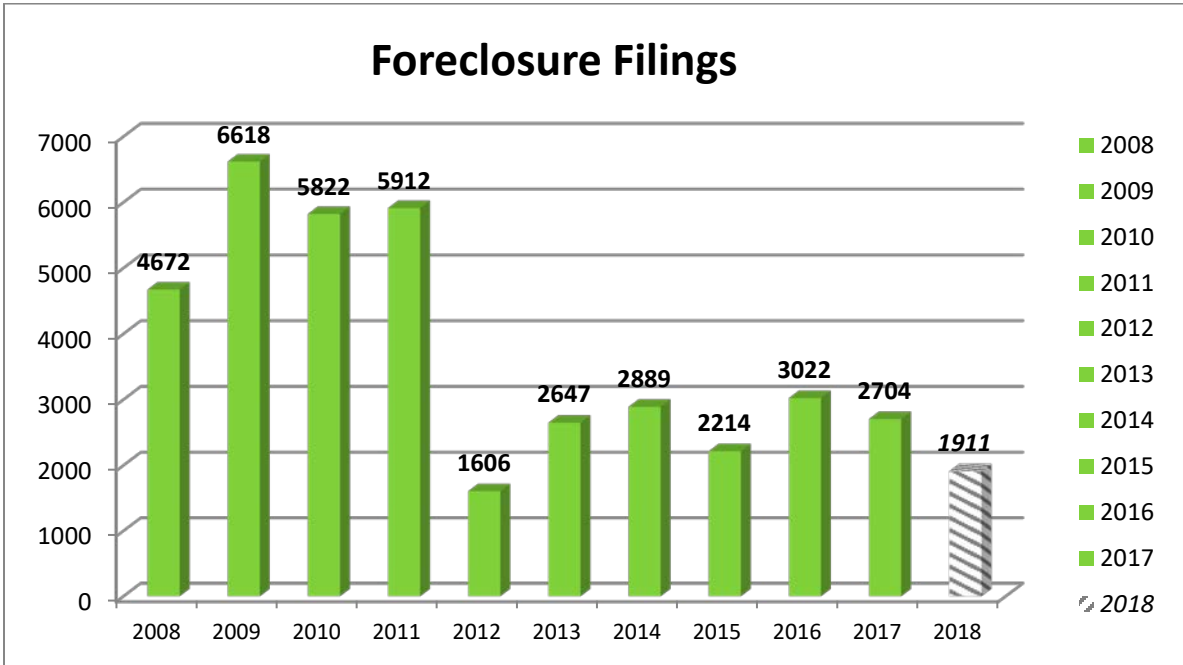
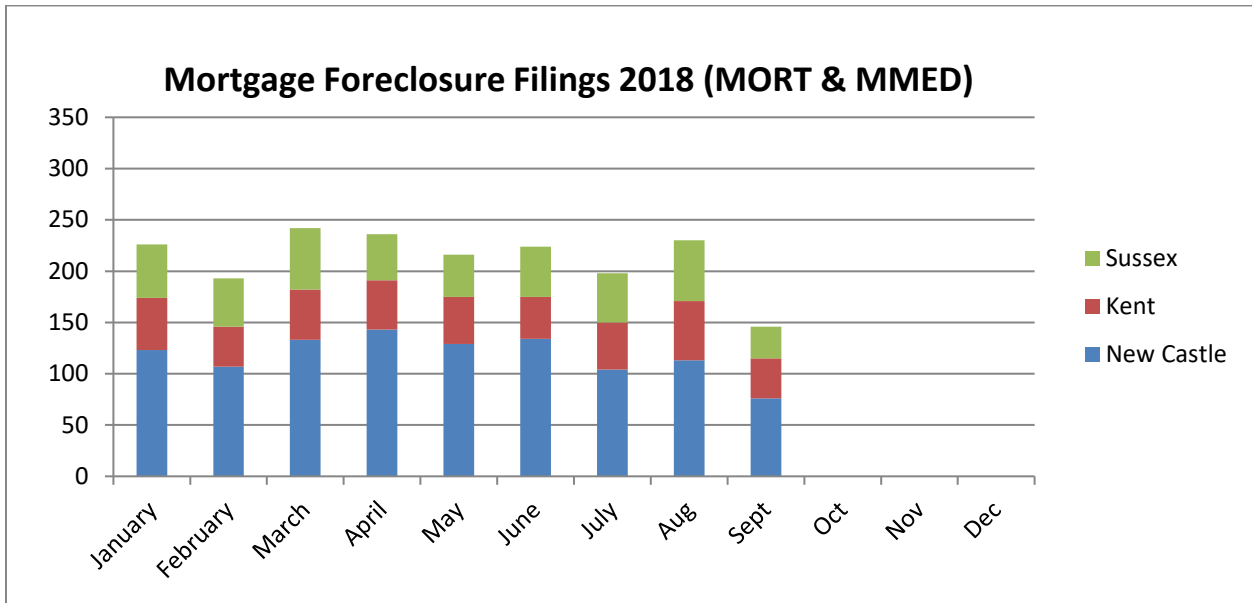


Delaware Foreclosure Data: 3rd Quarter 2018

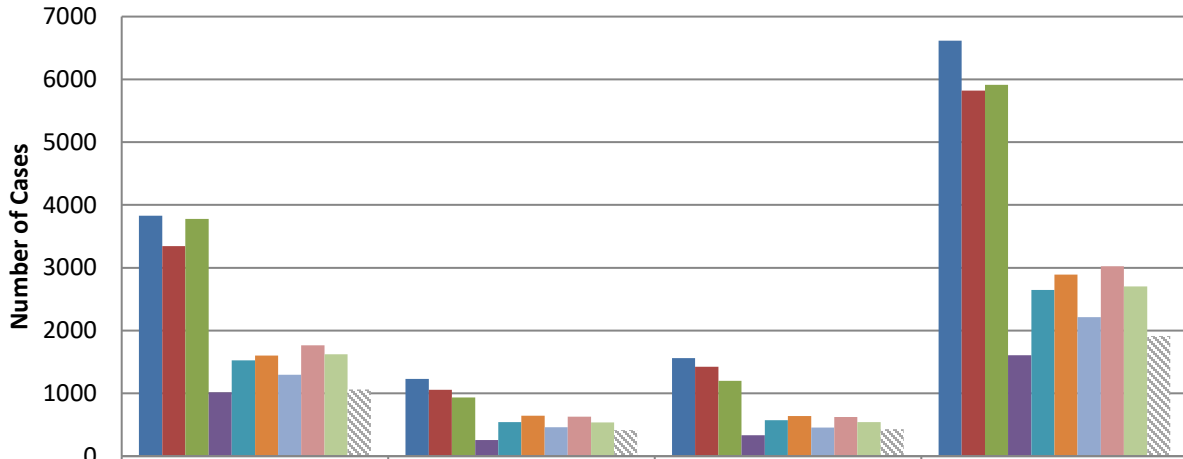


* MMED – Foreclosure actions eligible for the Automatic Residential Mortgage Foreclosure Mediation Program; MORT – Foreclosure actions ineligible for the Mediation Program.

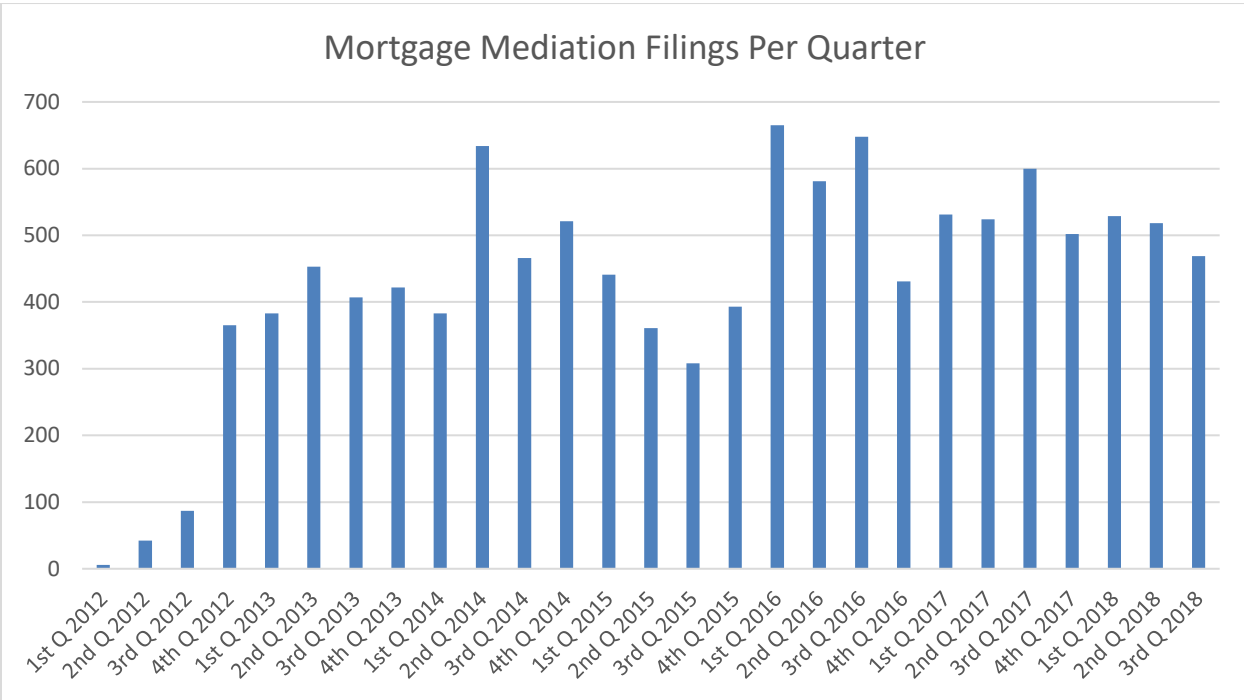
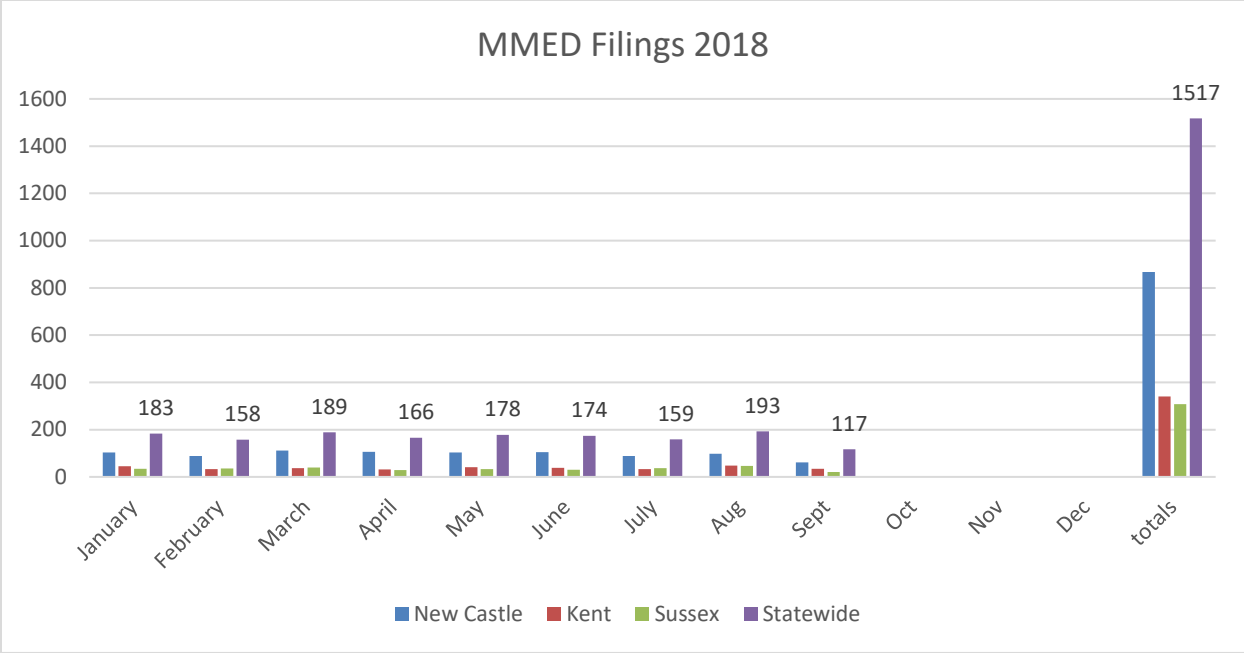


All data is compiled as of September 30, 2018

Historical Foreclosure Filings by County



	New Castle	Kent	Sussex	Statewide
■ 2009	3828	1228	1562	6618
■ 2010	3344	1055	1424	5823
■ 2011	3778	936	1198	5912
■ 2012	1016	256	334	1606
■ 2013	1528	544	575	2647
■ 2014	1602	646	641	2889
■ 2015	1296	463	455	2214
■ 2016	1766	631	625	3022
■ 2017	1623	537	544	2704
■ 2018	1062	417	432	1911



All data is compiled as of September 30, 2018