



cutter & squidge

AFTERNOON TEA MENU
32.5 PP



*Add a glass of Prosecco - 6.5
Add a bottle of Prosecco - 26*

SOHO SIGNATURE AFTERNOON TEA

SELECTION OF 3 CLASSIC SANDWICHES
2 WARM SCONES SERVED WITH JAM & CLOTTED CREAM
SLICE OF DREAM CAKE, SIGNATURE BISKIE & MACARON

Served with a pot of our specially blended tea

VEGAN SIGNATURE AFTERNOON TEA

SELECTION OF 3 CLASSIC VEGAN SANDWICHES
2 WARM VEGAN WHEAT FREE SCONES SERVED WITH JAM & CLOTTED CREAM
VEGAN WHEAT FREE BOWNIE, SLICE OF VEGAN DREAM CAKE &
VEGAN MINI CUPCAKES

Served with a pot of our specially blended tea

WHEAT FREE SIGNATURE AFTERNOON TEA

SELECTION OF 3 CLASSIC WHEAT FREE SANDWICHES
2 WARM VEGAN WHEAT FREE WARM SCONES SERVED WITH JAM
A WHEAT FREE BROWNIE, SLICE OF WHEAT FREE CAKE & MACARON

Served with a pot of our specially blended tea

AFTERNOON TEA MENU

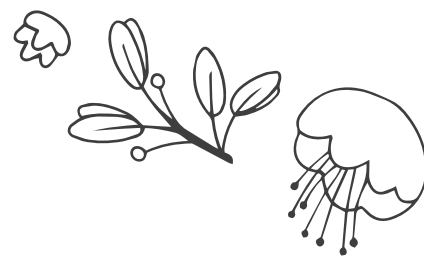
*Flavour of the day will be served for dream cakes, biskies, brownies, cupcakes and macarons.
Afternoon Tea includes one pot of tea with a hot water refill.*

*Unfortunately we are unable to cater for a combined nut and wheat allergy. All our food is
made in the same kitchen and trace allergens will be present.*



@cutterandsquidge
www.cutterandsquidge.com





cutter & squidge

MENU

TEA

FINE LOOSE LEAF TEA - 3.7

Choose from fine english breakfast, earl grey, green, lychee & peach, passionfruit, mint medley, orange & hibiscus, very berry

SPECIALITY HOT DRINKS

CLASSIC HOT CHOCOLATE - 4.2 vg

Add marshmallows for 50p

LAVENDER WHITE HOT CHOCOLATE - 4.2

MOCHA - 4.2

BLACK SESAME OAT MILK LATTE - 4.4 vg

Caffiene free

PINK LYCHEE ROSE LATTE - 4.4

MATCHA LATTE - 4.8

COFFEE

ESPRESSO - 2.5

MACCHIATO - 2.7

AMERICANO - 3

FLAT WHITE - 3.5

LATTE - 3.8

CAPPUCINO - 3.8

FIZZ

PROSECCO

Glass - 6.5

Bottle - 26

ICED DRINKS

CREAMY CLOUD LEMONADE - 7 vg

A zingy blend of fresh lemons, vegan condensed milk, soda, topped with our signature foam

FRUIT MACHINE - 7 vg

mixed fruit purees, blue tea and hibiscus tea with boba

ROYAL LYCHEE TEA - 7 vg

Lychee puree, blue tea and hibiscus tea with boba

BISCUIT LATTE - 7.5

Biscoff spread, shot of espresso, milk of choice, signature foam

PURPLE MIST - 7.5 vg

Coffee, lavender syrup, milk of choice & signature foam

CHOCO LATTE - 7.5

Coffee, chocolate, milk of choice, signature foam vg available

COCKTAILS

SALTED CARAMEL ESPRESSO MARTINI - 13

Vodka, coffee, liqueur, espresso, salted caramel

LYCHEE MOJITO - 9.5

White rum, lychee puree, lemon juice, soda & a slice of lemon.

STRAWBERRY MOJITO - 9.5

White rum, strawberry puree, lemon juice, soda & a slice of lemon.

PASSIONATE COLLINS - 9.5

Gin, passionfruit puree, vanilla syrup, soda

BELLINI - 7

Strawberry, Passionfruit or Lychee

NON ALCOHOLIC COCKTAILS

VIRGIN MOJITO - 7

Lychee or Strawberry puree, lemon & soda

VIRGIN BELLINI - 6

Strawberry, Passionfruit or Lychee puree, London Essence

Pomelo & Pink Pepper Tonic Water



All of our food is made in a kitchen which handles the following allergens: Gluten, milk, eggs, nuts, peanuts, sesame, mustard, and soy. We separate allergen specific ingredients as much as possible, however, please note that traces may be present and our products are not suitable for those with severe allergies. Please notify your server of any allergies you may have.

