

Full speed ahead.

Welcome to your new Mac Pro.
You're about to begin a very happy
and productive relationship. Let's get started.

Pick it up.
The curved edge on top is meant to be
used as a handle.



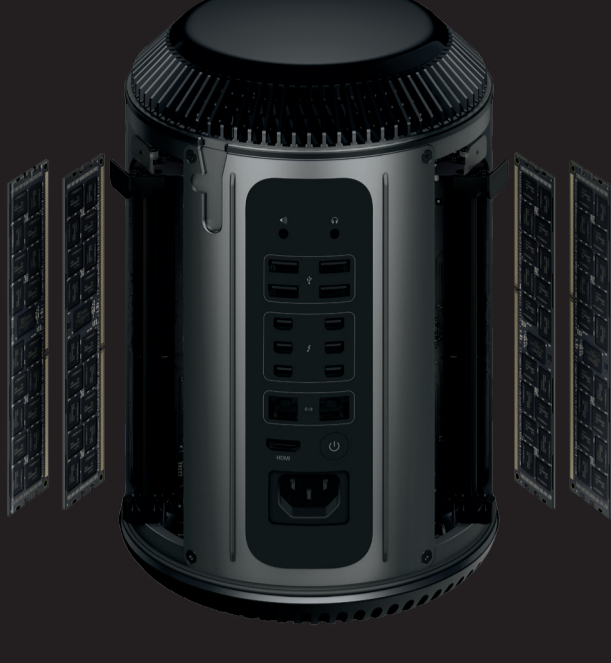
Set it up.
This is no floor model.
Go ahead and keep it right on your desk.



Open it up.
Just slide the enclosure release to
the right and lift.



Amp it up.
You've got four channels of blazing-fast
memory. And upgrading it is just as fast.



Hook it up.
Connect up to 36 Thunderbolt devices.
And just about anything else.



Power it up.
We can't wait to see what you'll do next.



An important note

Please read this document and the safety information in the Important Product Information Guide carefully before you first use your computer.

Learn more

You can find more information about Mac Pro features at www.apple.com/au/mac-pro.

Mac Help

You can often find answers to your questions, as well as instructions and troubleshooting information, in Mac Help. Click the Finder icon, click Help in the menu bar, and choose Mac Help. You can also use Safari to get online help.

OS X Utilities

If you have a problem with your Mac, OS X Utilities can help you restore your software and data from a Time Machine backup or reinstall OS X and Apple apps. If your Mac detects a problem, it opens OS X Utilities automatically. Or you can open it manually by restarting your computer while holding down the Command and R keys.

Support

Your Mac Pro comes with 90 days of technical support and one year of hardware repair warranty coverage at an Apple Retail Store or an Apple Authorised Service Provider. Visit www.apple.com/au/support/macpro for Mac Pro technical support. Or call Australia: (61) 1-300-321-456; New Zealand: 00800-7666-7666; Singapore: 800-186-1087 or (65) 6835-1812; Hong Kong: (852) 2112-0099; Malaysia: 1-800 803-638. www.apple.com/support/country

TM and © 2014 Apple Inc. All rights reserved. Printed in XXXX. X034-00339-A

Mac Pro

Designed by Apple in California
Assembled in the USA