

2024 CLEMSON GYMNASTICS

MEET-BY-MEET BREAKDOWN

DATE	MEET	TEAM	VAULT	BAR	BEAM	FLOOR	TOTAL
1.12	vs. William & Mary	CLEMSON William & Mary	48.875 47.800	49.225 47.600	48.950 48.225	49.275 46.425	196.325 190.050
1.21	vs. Pitt*	CLEMSON Pitt	49.150 48.750	48.925 48.625	48.750 48.300	49.375 49.100	196.200 194.775
1.26	at North Carolina*	CLEMSON North Carolina	48.950 48.750	49.150 47.675	49.200 48.675	49.250 49.150	196.550 194.250
2.2	vs. NC State*	CLEMSON NC State	49.050 49.050	49.150 49.050	47.875 48.850	49.525 49.350	195.600 196.300
2.9	at Pitt*	CLEMSON Pitt	49.050 49.000	48.925 48.875	49.125 48.850	49.275 49.175	196.375 195.900
2.17	at NC State*	CLEMSON NC State	48.800 49.250	49.375 49.450	48.625 49.375	49.200 49.500	196.000 197.575
2.23	vs. North Carolina*	CLEMSON North Carolina	49.200 49.150	49.250 49.150	49.300 48.750	49.600 48.450	197.350 195.500
3.3	TWU Quad Meet	CLEMSON Oklahoma Texas Women's University Penn	49.225 49.525 49.150 48.875	49.200 49.625 49.125 48.600	48.575 49.675 49.100 48.525	49.350 49.475 48.900 48.825	196.350 198.300 196.275 194.825
3.8	vs. Air Force	CLEMSON Air Force	49.175 48.500	49.400 49.025	49.450 48.200	49.575 48.925	197.600 194.650
3.16	at UCLA	CLEMSON UCLA	49.450 49.475	48.700 49.625	49.300 49.675	49.375 49.775	196.825 198.550
3.23	ACC Championship	CLEMSON Pitt North Carolina NC State	49.200 48.650 48.875 49.150	49.225 49.250 49.225 49.400	48.475 49.050 48.975 49.450	49.525 49.350 49.225 49.550	196.425 196.300 196.300 197.550
4.5	NCAA Round One	CLEMSON Iowa State	49.200 49.025	48.375 48.600	48.975 49.225	49.075 49.025	195.625 195.875
SEASON HIGHS		CLEMSON	49.450	49.400	49.450	49.600	197.600
		OPPONENT	49.525	49.625	49.675	49.775	198.550
SEASON AVERAGES		CLEMSON	49.110	49.075	48.883	49.367	196.435
		OPPONENT	48.936	48.931	48.931	49.013	195.811

2024 CLEMSON GYMNASTICS



MOLLY ARNOLD

R-Sophomore • Bloomington, Minn.

CAREER HIGHS *at Utah State

Vault	Bars	Beam	Floor	All-Around
9.975	9.825*	---	9.950	---

SEASON HIGHS

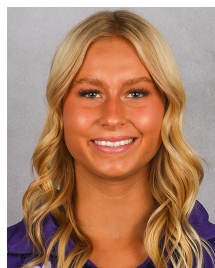
Vault	Bars	Beam	Floor	All-Around
9.975	---	---	9.950	---

DATE	MEET	VAULT	BAR	BEAM	FLOOR	AA
1.12	William & Mary	9.775	---	---	9.875	---
1.21	Pitt*	9.800	---	---	9.875	---
1.26	at UNC*	9.775	---	---	9.875	---
2.2	NC State*	9.850	---	---	9.950^	---
2.9	at Pitt*	9.775	---	---	9.825	---
2.17	at NC State*	9.925^	---	---	9.875	---
2.23	UNC*	9.800	---	---	9.925	---
3.3	at TWU/Oklahoma/Penn	9.850	---	---	9.875	---
3.8	Air Force	9.875	---	---	9.925	---
3.16	at UCLA	9.975	---	---	9.875	---
3.24	ACC Championship	9.850	---	---	9.950	---
4.4	NCAAs (team)	9.850	---	---	9.650	---
4.5	NCAAs (individual)	9.900	---	---	9.850	---

^event winner

PLAYER NOTES

- All-ACC Selection on vault and floor
- ACC All-Championship Team selection on vault and floor
- NCAA Individual Competitor Selection on vault and floor
- ACC Specialist of the Week (9.18)
- Tied a career-high with a 9.95 on floor at ACCs
- Recorded a career-high 9.975 on vault at UCLT
- Earned her first event win (tie with Lauren Rutherford) on vault vs NC State
- Tallied a career-high 9.925 on vault at NC State for her second event win of the year
- Transfer from Utah State



TAKODA BERRY

Freshman • Newport Beach, Calif.

CAREER HIGHS

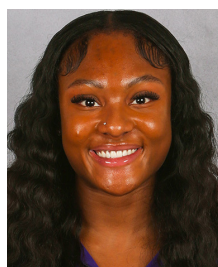
Vault	Bars	Beam	Floor	All-Around
---	---	---	---	---

SEASON HIGHS

Vault	Bars	Beam	Floor	All-Around
---	---	---	---	---

DATE	MEET	VAULT	BAR	BEAM	FLOOR	AA
1.12	William & Mary	---	---	---	---	---
1.21	Pitt*	---	---	---	---	---
1.26	at UNC*	---	---	---	---	---
2.2	NC State*	---	---	---	---	---
2.9	at Pitt*	---	---	---	---	---
2.17	at NC State*	---	---	---	---	---
2.23	UNC*	---	---	---	---	---
3.3	at TWU/Oklahoma/Penn	---	---	---	---	---
3.8	Air Force	---	---	---	---	---
3.16	at UCLA	---	---	---	---	---
3.24	ACC Championship	---	---	---	---	---

PLAYER NOTES



TRINITY BROWN

R-Sophomore • Upper Marlboro, Md.

CAREER HIGHS *at Utah State

Vault	Bars	Beam	Floor	All-Around
9.900	9.875	---	9.925*	---

SEASON HIGHS

Vault	Bars	Beam	Floor	All-Around
9.900	9.875	---	9.825	---

DATE	MEET	VAULT	BAR	BEAM	FLOOR	AA
1.12	William & Mary	9.800	9.800	---	---	---
1.21	Pitt*	9.900^	9.650	---	9.800	---
1.26	at UNC*	9.750	9.650	---	---	---
2.2	NC State*	9.775	---	---	9.800	---
2.9	at Pitt*	9.875	9.775	---	9.825	---
2.17	at NC State*	9.800	9.875	---	9.050	---
2.23	UNC*	9.875	9.850	---	---	---
3.3	at TWU/Oklahoma/Penn	9.800	---	---	---	---
3.8	Air Force	---	---	---	---	---
3.16	at UCLA	---	---	---	---	---
3.24	ACC Championship	---	---	---	---	---
4.4	NCAAs	9.875	---	---	---	---

^event winner

PLAYER NOTES

- Transfer from Utah State
- 2022 Academic All-Mountain Rim Gymnastics Conference
- Recorded a then-career-high 9.800 on bars in Clemson's inaugural meet vs. William & Mary
- Set a career-high on vault (9.900) in Clemson's win over Pitt; won event
- Recorded a career-high 9.875 on bars at NC State on Feb. 17



KATE BRYANT

Freshman • Littleton, Colo.

CAREER HIGHS

Vault	Bars	Beam	Floor	All-Around
9.775	---	---	---	---

SEASON HIGHS

Vault	Bars	Beam	Floor	All-Around
9.775	---	---	---	---

DATE	MEET	VAULT	BAR	BEAM	FLOOR	AA
1.12	William & Mary	---	---	---	---	---
1.21	Pitt*	---	---	---	---	---
1.26	at UNC*	---	---	---	---	---
2.2	NC State*	---	---	---	---	---
2.9	at Pitt*	9.700	---	---	---	---
2.17	at NC State*	---	---	---	---	---
2.23	UNC*	9.750	---	---	---	---
3.3	at TWU/Oklahoma/Penn	---	---	---	---	---
3.8	Air Force	9.775	---	---	---	---
3.16	at UCLA	---	---	---	---	---
3.24	ACC Championship	---	---	---	---	---
4.4	NCAAs	---	---	---	---	---

PLAYER NOTES

- Recorded a season-high 9.775 on vault vs Air Force

2024 CLEMSON GYMNASTICS



SIERRA CHURCH

Freshman • Lincolnton, N.C.

CAREER HIGHS

Vault	Bars	Beam	Floor	All-Around
---	---	9.925	---	---

SEASON HIGHS

Vault	Bars	Beam	Floor	All-Around
---	---	9.925	---	---

DATE	MEET	VAULT	BAR	BEAM	FLOOR	AA
1.12	William & Mary	---	---	---	---	---
1.21	Pitt*	---	---	---	---	---
1.26	at UNC*	---	---	---	---	---
2.2	NC State*	---	---	9.650	---	---
2.9	at Pitt*	---	---	9.800	---	---
2.17	at NC State*	---	---	9.825	---	---
2.23	UNC*	---	---	9.925^	---	---
3.3	at TWU/Oklahoma/Penn	---	---	9.675	---	---
3.8	Air Force	---	---	9.875	---	---
3.16	at UCLA	---	---	9.875	---	---
3.24	ACC Championship	---	---	9.200	---	---
4.4	NCAAs	---	---	9.750	---	---

^event winner

PLAYER NOTES

- Set a then-career-high with 9.825 on beam at NC State
- Earned her first event win against North Carolina on February 23 with a career-high 9.925.



BRIE CLARK

R-Sophomore • Daphne, Ala.

CAREER HIGHS

Vault	Bars	Beam	Floor	All-Around
9.825*	---	9.925	9.950	---

SEASON HIGHS

Vault	Bars	Beam	Floor	All-Around
---	---	9.925	9.950	---

DATE	MEET	VAULT	BAR	BEAM	FLOOR	AA
1.12	William & Mary	---	---	9.850	9.900^	---
1.21	Pitt*	---	---	9.200	9.925^	---
1.26	at UNC*	---	---	9.900^	9.925^	---
2.2	NC State*	---	---	---	---	---
2.9	at Pitt*	---	---	9.300	9.900^	---
2.17	at NC State*	---	---	9.875	9.875	---
2.23	UNC*	---	---	9.775	9.925	---
3.3	at TWU/Oklahoma/Penn	---	---	9.700	9.900	---
3.8	Air Force	---	---	9.925	9.950^	---
3.16	at UCLA	---	---	9.700	9.750	---
3.24	ACC Championship	---	---	9.225	9.800	---
4.4	NCAAs (team)	---	---	9.775	9.800	---
4.5	NCAAs (individual)	---	---	---	9.100	---

^event winner

PLAYER NOTES

- All-ACC Selection (floor)
- NCAA Individual Competitor Selection on floor
- 2x ACC Specialist of the week
- Missed NC State meet due to illness
- Has won 5 floor events and one beam event for Clemson
- Tied a career-high on beam and floor vs Air Force
- Transfer from Utah State
- Women's Collegiate Gymnastics Association Regular Season Second Team All-American (2022)
- Mountain Rim Gymnastics Conference Floor Specialist of the Year (2022)



KAITLIN DEGUZMAN

Graduate • Dallas, Texas

CAREER HIGHS

Vault	Bars	Beam	Floor	All-Around
---	9.925	9.800*	9.800*	---

SEASON HIGHS

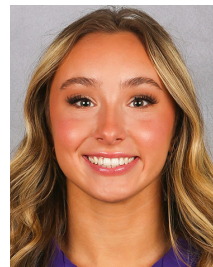
Vault	Bars	Beam	Floor	All-Around
---	9.925	---	---	---

DATE	MEET	VAULT	BAR	BEAM	FLOOR	AA
1.12	William & Mary	---	9.875	---	---	---
1.21	Pitt*	---	9.800	---	---	---
1.26	at UNC*	---	9.875	---	---	---
2.2	NC State*	---	9.850^	---	---	---
2.9	at Pitt*	---	9.800	---	---	---
2.17	at NC State*	---	9.850	---	---	---
2.23	UNC*	---	9.725	---	---	---
3.3	at TWU/Oklahoma/Penn	---	9.900	---	---	---
3.8	Air Force	---	9.925^	---	---	---
3.16	at UCLA	---	9.800	---	---	---
3.24	ACC Championship	---	9.825	---	---	---
4.4	NCAAs	---	9.900	---	---	---

^event winner

PLAYER NOTES

- All-ACC Selection (bars)
- Tied a career-high with a 9.925 and an event win on bars on Senior Night vs Air Force
- Won first event as a Tiger vs NC State (three-way tie for bars)
- Set a season high on bars at the TWU Quad meet (9.900)
- Transfer from Kentucky
- Dual citizen of the United States and Philippines
- Two-time WGCA Scholastic All-American



MAGGIE HOLMAN

Freshman • Raleigh, N.C.

CAREER HIGHS

Vault	Bars	Beam	Floor	All-Around
9.850	---	9.100	9.900	---

SEASON HIGHS

Vault	Bars	Beam	Floor	All-Around
9.850	---	9.100	9.900	---

DATE	MEET	VAULT	BAR	BEAM	FLOOR	AA
1.12	William & Mary	---	---	---	9.825	---
1.21	Pitt*	---	---	---	---	---
1.26	at UNC*	---	---	9.100	9.825	---
2.2	NC State*	9.850	---	---	9.900	---
2.9	at Pitt*	9.750	---	---	9.750	---
2.17	at NC State*	9.250	---	---	9.675	---
2.23	UNC*	---	---	---	---	---
3.3	at TWU/Oklahoma/Penn	9.775	---	---	9.650	---
3.8	Air Force	9.850	---	---	---	---
3.16	at UCLA	9.850	---	---	---	---
3.24	ACC Championship	9.825	---	---	---	---
4.4	NCAAs	---	---	---	---	---

PLAYER NOTES

- All ACC-Tournament (vault)
- Tied a season-high with a 9.850 on vault at UCLA
- Tied a season high with a 9.850 on vault vs Air Force
- Stepped into the lineup for the Tigers due to holes left by injury and sickness vs. NC State and came in second on vault by 0.025
- Named ACC Newcomer of the Week on Feb. 5
- Led off the floor exercise for Clemson vs NC State and earned a season-high 9.900

2024 CLEMSON GYMNASTICS



EVE JACKSON

R-Junior • Los Angeles, Calif.

CAREER HIGHS

Vault	Bars	Beam	Floor	All-Around
9.900	9.900	9.775	9.925	39.200

SEASON HIGHS

Vault	Bars	Beam	Floor	All-Around
9.900	9.900	9.775	9.925	39.200

DATE	MEET	VAULT	BAR	BEAM	FLOOR	AA
1.12	William & Mary	9.750	9.825	9.775	---	---
1.21	Pitt*	9.800	9.825^	9.675	---	---
1.26	at UNC*	9.725	9.775	9.725	8.500	37.725
2.2	NC State*	9.700	9.850^	9.700	9.850	39.100
2.9	at Pitt*	---	9.800	---	---	---
2.17	at NC State*	9.825	9.875	---	9.875	---
2.23	UNC*	9.800	9.900	9.200	9.900	38.800
3.3	at TWU/Oklahoma/Penn	9.825	9.800	9.675	9.900	39.200
3.8	Air Force	9.775	9.900	9.675	9.850	39.200
3.16	at UCLA	9.900	9.800	8.975	9.925	38.600
3.24	ACC Championship	9.325	9.850	---	9.875	---
4.4	NCAAs	9.300	9.675	---	9.825	---

^event winner

PLAYER NOTES

- Transfer from Utah State
- Recorded a career-high on vault and floor at UCLA (9.900; 9.925)
- Tied then-season/career highs on vault and floor at the TWU Quad, while setting a career-high all-around score (39.200)
- Tied a career-high with a 9.900 on bars vs UNC (2.23); set a career-high (9.900) on floor vs UNC (2.23)
- Won bars event vs Pitt (9.825); won bars event vs NC State (9.850; three-way tie)
- Tied a career-high with a 9.825 on vault at NC State
- Father, Byron, played in the NFL, CFL and World League
- Niece of DeSean Jackson



QUINN KUHL

Freshman • Holly Springs, N.C.

CAREER HIGHS

Vault	Bars	Beam	Floor	All-Around
---	---	9.800	---	---

SEASON HIGHS

Vault	Bars	Beam	Floor	All-Around
---	---	9.800	---	---

DATE	MEET	VAULT	BAR	BEAM	FLOOR	AA
1.12	William & Mary	---	---	9.700	---	---
1.21	Pitt*	---	---	9.475	---	---
1.26	at UNC*	---	---	9.800	---	---
2.2	NC State*	---	---	8.875	---	---
2.9	at Pitt*	---	---	9.750	---	---
2.17	at NC State*	---	---	9.075	---	---
2.23	UNC*	---	---	---	---	---
3.3	at TWU/Oklahoma/Penn	---	---	---	---	---
3.8	Air Force	---	---	---	---	---
3.16	at UCLA	---	---	---	---	---
3.24	ACC Championship	---	---	9.800	---	---
4.4	NCAAs	---	---	9.800	---	---

PLAYER NOTES



LILY KURRACK

Freshman • Tampa, Fla.

CAREER HIGHS

Vault	Bars	Beam	Floor	All-Around
---	---	---	---	---

SEASON HIGHS

Vault	Bars	Beam	Floor	All-Around
---	---	---	---	---

DATE	MEET	VAULT	BAR	BEAM	FLOOR	AA
1.12	William & Mary	---	---	---	---	---
1.21	Pitt*	---	---	---	---	---
1.26	at UNC*	---	---	---	---	---
2.2	NC State*	---	---	---	---	---
2.9	at Pitt*	---	---	---	---	---
2.17	at NC State*	---	---	---	---	---
2.23	UNC*	---	---	---	---	---
3.3	at TWU/Oklahoma/Penn	---	---	---	---	---
3.8	Air Force	---	---	---	---	---
3.16	at UCLA	---	---	---	---	---
3.24	ACC Championship	---	---	---	---	---
4.4	NCAAs	---	---	---	---	---

PLAYER NOTES



GRACE LACROSSE

Freshman • Lake Zurich, Ill.

CAREER HIGHS

Vault	Bars	Beam	Floor	All-Around
---	---	---	---	---

SEASON HIGHS

Vault	Bars	Beam	Floor	All-Around
---	---	---	---	---

DATE	MEET	VAULT	BAR	BEAM	FLOOR	AA
1.12	William & Mary	---	---	---	---	---
1.21	Pitt*	---	---	---	---	---
1.26	at UNC*	---	---	---	---	---
2.2	NC State*	---	---	---	---	---
2.9	at Pitt*	---	---	---	---	---
2.17	at NC State*	---	---	---	---	---
2.23	UNC*	---	---	---	---	---
3.3	at TWU/Oklahoma/Penn	---	---	---	---	---
3.8	Air Force	---	---	---	---	---
3.16	at UCLA	---	---	---	---	---
3.24	ACC Championship	---	---	---	---	---
4.4	NCAAs	---	---	---	---	---

PLAYER NOTES

2024 CLEMSON GYMNASTICS



LILLY LIPPEATT

R-Freshman • Mason, Ohio

CAREER HIGHS

Vault	Bars	Beam	Floor	All-Around
---	9.900	9.900	9.925	---

SEASON HIGHS

Vault	Bars	Beam	Floor	All-Around
---	9.900	9.900	9.925	---

DATE	MEET	VAULT	BAR	BEAM	FLOOR	AA
1.12	William & Mary	---	9.900 [^]	9.750	9.825	---
1.21	Pitt*	---	9.800	9.850	9.875	---
1.26	at UNC*	---	9.825	---	---	---
2.2	NC State*	---	9.825	9.775	---	---
2.9	at Pitt*	---	9.125	9.825	---	---
2.17	at NC State*	---	9.900	9.900	---	---
2.23	UNC*	---	9.825	9.850	---	---
3.3	at TWU/Oklahoma/Penn	---	9.825	9.725	---	---
3.8	Air Force	---	9.850	9.850	9.925	---
3.16	at UCLA	---	9.875	9.875	9.900	---
3.24	ACC Championship	---	9.900	9.875	9.875	---
4.4	NCAAs	---	9.750	9.725	9.825	---

[^]event winner

PLAYER NOTES

- ACC Newcomer of the Year
- All-ACC Selection (bars)
- ACC All-Championship Team (bars, beam)
- Recorded the first 9.900 in school history vs William & Mary (bars)
- Tied a season-high with a 9.900 on bars at NC State and set a season-high with a 9.900 on beam.
- ACC Newcomer of the Week (Jan. 15; Jan. 22; Mar. 18)
- Set a career-high on floor with a 9.925 vs Air Force
- First high school signee in program history (enrolled in fall 2022)



KIELYN McCRIGHT

R-Sophomore • Parkland, Fla.

CAREER HIGHS ^{*at Utah State}

Vault	Bars	Beam	Floor	All-Around
---	---	9.925	---	---

SEASON HIGHS

Vault	Bars	Beam	Floor	All-Around
---	---	9.925	---	---

DATE	MEET	VAULT	BAR	BEAM	FLOOR	AA
1.12	William & Mary	---	---	9.675	---	---
1.21	Pitt*	---	---	9.900 [^]	---	---
1.26	at UNC*	---	---	9.900 [^]	---	---
2.2	NC State*	---	---	8.900	---	---
2.9	at Pitt*	---	---	9.825	---	---
2.17	at NC State*	---	---	8.975	---	---
2.23	UNC*	---	---	9.900	---	---
3.3	at TWU/Oklahoma/Penn	---	---	9.500	---	---
3.8	Air Force	---	---	9.850	---	---
3.16	at UCLA	---	---	9.925	---	---
3.24	ACC Championship	---	---	9.875	---	---
4.4	NCAAs (team)	---	---	9.750	---	---
4.5	NCAAs (individual)	---	---	9.850	---	---

[^]event winner

PLAYER NOTES

- All-ACC Selection (beam)
- ACC All-Championship Team (beam)
- NCAA Individual Competitor Selection on beam
- Tied a career-high with a 9.925 on beam at UCLA
- Earned her first event win as a Tiger vs Pitt with a 9.900 on beam
- Earned second-consecutive beam win vs UNC (9.900)
- Transfer from Utah State



MADISON MINNER

R-Sophomore • Anderson, S.C.

CAREER HIGHS

Vault	Bars	Beam	Floor	All-Around
9.900	---	---	9.900	---

SEASON HIGHS

Vault	Bars	Beam	Floor	All-Around
9.900	---	---	9.900	---

DATE	MEET	VAULT	BAR	BEAM	FLOOR	AA
1.12	William & Mary	9.600	---	---	---	---
1.21	Pitt*	9.800	---	---	---	---
1.26	at UNC*	9.775	---	---	---	---
2.2	NC State*	9.750	---	---	9.875	---
2.9	at Pitt*	9.800	---	---	9.825	---
2.17	at NC State*	9.350	---	---	---	---
2.23	UNC*	---	---	---	---	---
3.3	at TWU/Oklahoma/Penn	9.900	---	---	9.800	---
3.8	Air Force	9.750	---	---	9.900	---
3.16	at UCLA	9.850	---	---	---	---
3.24	ACC Championship	9.875	---	---	---	---
4.4	NCAAs	9.775	---	---	---	---

PLAYER NOTES

- ACC All-Championship Team (vault)
- Walk-on from nearby Anderson, S.C.
- Set a career-high on vault, 9.900, at the TWU Quad meet
- Set a career-high on floor, 9.900, vs Air Force



LAUREN RUTHERFORD

Junior • Roswell, Ga.

CAREER HIGHS ^{*at NC State}

Vault	Bars	Beam	Floor	All-Around
9.925	9.925*	---	9.950	---

SEASON HIGHS

Vault	Bars	Beam	Floor	All-Around
9.925	9.875	---	9.950	---

DATE	MEET	VAULT	BAR	BEAM	FLOOR	AA
1.12	William & Mary	9.825 [^]	9.825	---	9.850	---
1.21	Pitt*	9.850	9.750	---	9.900	---
1.26	at UNC*	9.925 [^]	9.825	---	9.850	---
2.2	NC State*	9.825	9.800	---	9.950 [^]	---
2.9	at Pitt*	---	9.875	---	---	---
2.17	at NC State*	---	---	---	---	---
2.23	UNC*	9.925 [^]	9.825	---	9.900	---
3.3	at TWU/Oklahoma/Penn	---	9.800	---	---	---
3.8	Air Force	---	9.825	---	---	---
3.16	at UCLA	9.825	9.150	---	9.850	---
3.24	ACC Championship	9.800	9.000	---	9.925	---
4.4	NCAAs	9.875	9.000	---	9.825	---

[^]event winner

PLAYER NOTES

- ACC All-Championship Team (floor)
- Set a season-high with 9.875 on bars at NC State
- Missed Pitt meet due to illness
- Set a career-high on vault with a 9.925 at North Carolina, tied it at home vs UNC
- Earned her first event win as a Tiger vs William & Mary with a 9.825 on vault; Clemson's first-ever event winner (vault, vs William & Mary)
- Recorded the first 9.90 of her Clemson career on floor vs Pitt
- Set a career-high on vault with a 9.925 at North Carolina
- Tied a career-high with a 9.950 (Clemson's highest floor score of the season) to win floor vs. NC State (tie with Molly Arnold)
- Transfer from NC State

2024 CLEMSON GYMNASTICS



TRINITY WEBB

Freshman • Smithville, Mo.

CAREER HIGHS

Vault	Bars	Beam	Floor	All-Around
---	9.900	---	---	---

SEASON HIGHS

Vault	Bars	Beam	Floor	All-Around
---	9.900	---	---	---

DATE	MEET	VAULT	BAR	BEAM	FLOOR	AA
1.12	William & Mary	---	---	---	---	---
1.21	Pitt*	---	---	---	---	---
1.26	at UNC*	---	---	---	---	---
2.2	NC State*	---	9.825	---	---	---
2.9	at Pitt*	---	9.775	---	---	---
2.17	at NC State*	---	---	---	---	---
2.23	UNC*	---	---	---	---	---
3.3	at TWU/Oklahoma/Penn	---	9.800	---	---	---
3.8	Air Force	---	9.900	---	---	---
3.16	at UCLA	---	9.825	---	---	---
3.24	ACC Championship	---	9.775	---	---	---
4.4	NCAAs	---	9.275	---	---	---

PLAYER NOTES

- January 2024 enrollee
- Set a season-high with a 9.900 on bars vs Air Force



REBECCA WELLS

R-Senior • Smyrna, Tenn.

CAREER HIGHS ^{*at Utah State}

Vault	Bars	Beam	Floor	All-Around
9.900	9.875	9.950	9.950	39.550

SEASON HIGHS

Vault	Bars	Beam	Floor	All-Around
9.900	9.875	9.950	9.950	39.550

DATE	MEET	VAULT	BAR	BEAM	FLOOR	AA
1.12	William & Mary	9.725	9.800^	9.875	9.150	38.550^
1.21	Pitt*	9.725	9.750	9.850	9.800	39.125^
1.26	at UNC*	9.725	9.850	9.875	9.775	39.225^
2.2	NC State*	---	9.775	9.850^	---	---
2.9	at Pitt*	9.850	9.775	9.925^	9.900^	39.450^
2.17	at NC State*	9.900	9.800	9.950^	9.900	39.550
2.23	UNC*	9.800	9.850	9.850	9.950^	39.450^
3.3	at TWU/Oklahoma/Penn	9.850	9.875	9.800	9.875	39.400
3.8	Air Force	9.900^	9.775	9.950^	9.875	39.500^
3.16	at UCLA	9.875	9.400	9.925	9.825	39.025
3.24	ACC Championship	9.850	9.875	9.700	9.900	39.325
4.4	NCAAs (team)	9.825	9.775	9.900	9.800	39.300
4.5	NCAAs (individual)	9.825	9.825	9.900	9.850	39.400

^event winner

PLAYER NOTES

- All-ACC Selection (all-around, vault, beam)
- ACC All-Championship Team (all-around, floor, vault)
- NCAA Individual Selection (All-Around)
- 2024 AAI Award Nominee
- Clemson's first-ever all-around winner (vs William & Mary) and currently the only all-around winner in program history (6)
- Tied her season/career-high with a 9.900 on vault and 9.950 on beam vs Air Force
- Tied a career-high with a 9.875 on bars at the TWU Quad meet (3.3)
- Set a career-high with a 9.950 on floor vs North Carolina (event win)
- Set a career-high with a 9.950 on beam at NC State, tied a career-high with a 9.900 on vault during the same meet and tied a season-high with a 9.900 on floor.
- Set a career-high with a 39.550 all-around score at NC State (2.17)
- Tied a career-high on floor and beam at Pitt (2.9); won both events