

IMPACTS

SUMMER INSTITUTE

- **Teacher Teams attend a one-week hybrid institute to deeply explore mathematics & design professional development plans to share strategies and content with colleagues in their schools.**

**JUNE
10-14**
GRADES K-9

FOR TEACHER TEAMS WITH PRODUCTIVE MATHEMATICS DISPOSITIONS & COMMITMENT TO THEIR SCHOOLS.



The content and pedagogy focus will be a deep understanding of foundational mathematics for Elementary and proportional reasoning and algebraic thinking for Middle School.

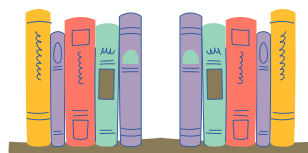
SIGN UP NOW!



THE IMPACTS PROGRAM CATERS TO TEACHERS SEEKING TO BRING ABOUT THE GREATEST CHANGE IN STUDENTS' FOUNDATIONAL MATHEMATICS EXPERIENCES & IMPROVE STUDENT OUTCOMES IN MATHEMATICS!



FOLLOW US:
@UARIZONACRR



SIGN UP AT:
CRR.MATH.ARIZONA.EDU/IMPACTS