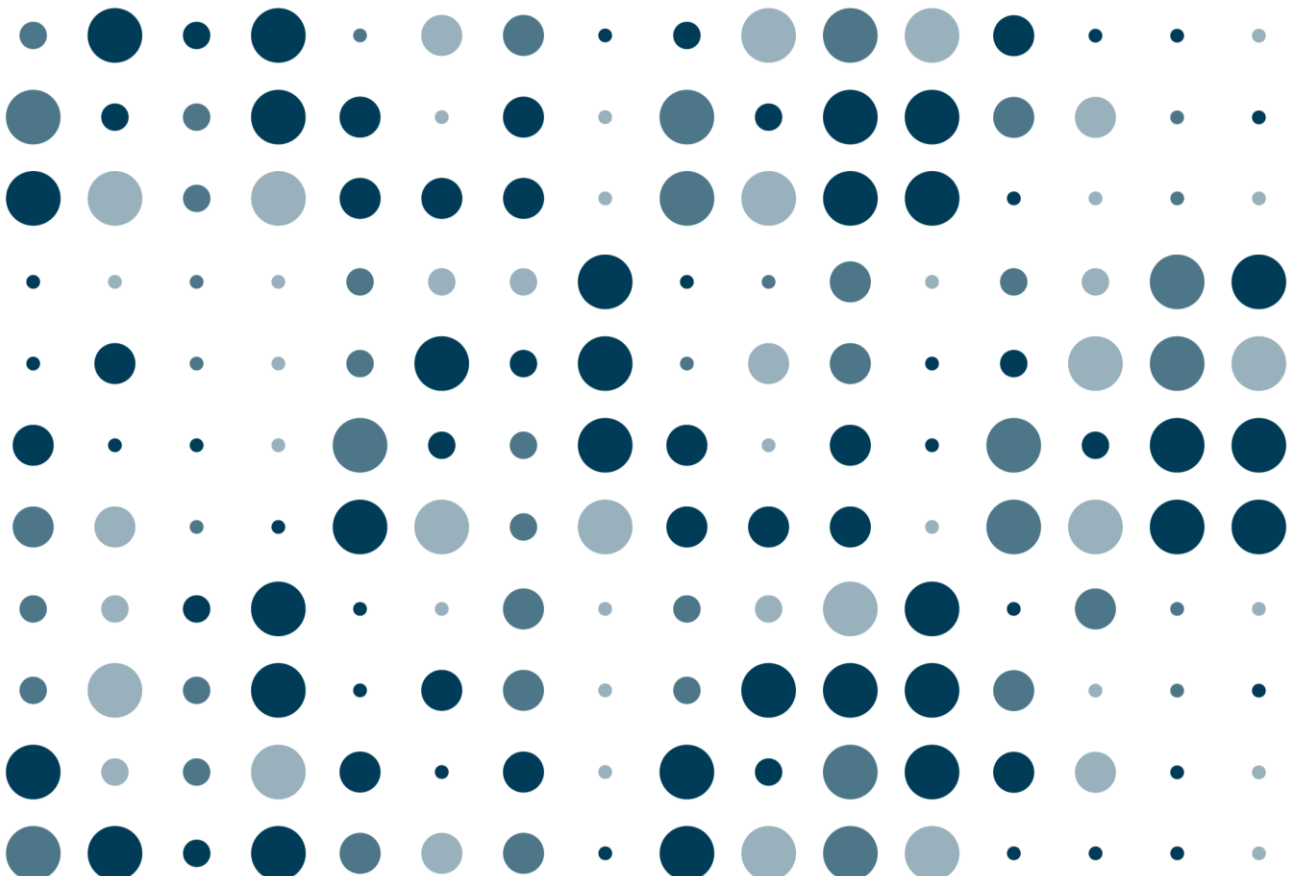


Response to the ‘Census 2021 outputs: content design and release phase proposals’ consultation – Part one

A summary of responses and recommendations related to
questions focused on phase one of the release schedule

16 December 2021



Contents

| | |
|--|----|
| Contact information | 2 |
| Introduction | 3 |
| Thank you to respondents | 3 |
| Consultation aims | 3 |
| Contents of this report | 3 |
| Summary of changes to phase one proposals | 5 |
| Engagement and response | 10 |
| Success criteria | 10 |
| User engagement | 10 |
| Summary of responses | 11 |
| Evaluating responses | 13 |
| Finalising our release schedule and product specifications | 13 |
| Geography: phase one conclusions | 15 |
| Geographies that statistics will be published by | 15 |
| Collating data from across the four nations of the UK | 18 |
| Products: phase one conclusions | 20 |
| Topic summaries | 20 |
| Area profiles | 23 |
| New questions in Census 2021: phase one conclusions | 27 |
| Gender identity | 27 |
| Sexual orientation | 29 |
| UK armed forces veterans | 31 |
| Proxy response variables | 33 |
| New or amended classifications: phase one conclusions | 35 |
| Ethnic group | 35 |
| Age | 38 |
| Country of birth | 40 |
| Other classifications | 42 |
| Next steps | 48 |
| Annex A: How we're responding to the different consultation sections | 50 |
| Response to the consultation: part one | 50 |
| Response to the consultation: part two | 51 |
| Annex B: Consultation respondents | 53 |
| Professional and organisational responses | 53 |
| Summary of total respondents' topic interest | 61 |

Contact information

Enquiries

Email: census.outputs@ons.gov.uk

Phone: +44 1329 444972

Fax: +44 1633 652981

Post: Census 2021 Outputs Consultation, Office for National Statistics, Segensworth Road, Titchfield, Hampshire, PO15 5RR

Consultation announcements

We, at the Office for National Statistics (ONS), will announce the publication of future updates to this consultation through our email bulletins, which are hosted by GovDelivery.

To receive the latest updates on Census 2021 outputs, products, release plans, consultations and events, please register to receive the free GovDelivery bulletins. You can do this by:

- visiting the [GovDelivery](#) website
- entering your email address in the field provided
- selecting the option to subscribe to '2021 Census outputs'
- selecting submit at the bottom of the page

Quality assurance

The ONS carried out this consultation in accordance with the [government's consultation principles](#).

Please email ons.consultations@ons.gov.uk, if you have any complaints about the way we've conducted this consultation.

Introduction

Thank you to respondents

We'd like to thank everybody who gave us their views by responding to the consultation on [Census 2021 outputs: content design and release phase proposals](#) for England and Wales. This will help us develop a comprehensive suite of outputs and analysis products that will help users answer the most important questions facing society.

Consultation aims

Throughout the development of the census, we've engaged with users to help us to understand their changing needs. As a result of this continual engagement, we're confident that we've collected high-quality data to meet users' needs.

This consultation focussed on our proposals for content design and release phases. We aimed to:

- obtain feedback on the consultation proposals
- gain an updated view of users' changing needs, for example, as a result of the coronavirus (COVID-19) pandemic or Brexit
- identify the extent to which census data and analysis can meet users' needs

This consultation was open from 13 July to 5 October 2021. To support the consultation, we published a [consultation document \(PDF, 929KB\)](#) outlining our proposals. This covered all aspects of the Census 2021 outputs and analysis release schedule and a range of different outputs products. When responding to the consultation, we asked users to provide both their requirements and the justification for those requirements.

We will use the information given in the consultation responses to identify any new or changed data needs and to prioritise the development of proposed outputs products. Based on this information, we will finalise our release schedule for Census 2021 outputs.

Census 2021 will provide the best, and most detailed, snapshot possible of our society. As circumstances and characteristics change over time, we will continue in our core mission to provide insight on the economy, population and society at national, regional and local levels. Alongside the census results, we will include our plans to provide ongoing updates to the relevant statistics over time using other data sources.

Contents of this report

This report is part one of the consultation response.

In this response, we focus on user feedback about the design and ordering of Census 2021 products in phase one of our release plans. We provide:

- planned changes to our proposals for phase one of our releases based on users' feedback
- descriptions of the user needs that led to the changes to our proposals
- a summary of how we encouraged users to respond and who responded
- information about how we're evaluating the responses for all phases

Users should not draw conclusions about our decisions for Census 2021 outputs based on this report alone. A justified user need for information does not necessarily mean that it's appropriate or feasible to publish the requested information as part of the Census 2021 outputs. Conversely, many needs were well known before the consultation, so we did not need further evidence to include them in our plans.

In early 2022, we will publish part two of our response addressing feedback about the remaining phases of the Census 2021 outputs release schedule.

In "Annex A: How we're responding to the different consultation sections", we describe the structure of the consultation document and questionnaire. We outline which sections of the questionnaire relate to phase one of the release schedule and we discuss them in this response. We also state which sections relate to later phases of the release schedule and will discuss them in part two of our response.

We're currently moderating all responses to this consultation. For transparency, we will publish the moderated responses on the [consultation webpage](#) when we publish part two of the consultation response.

Summary of changes to phase one proposals

In this section, we summarise the consultation proposals about phase one of the Census 2021 outputs release schedule that we're changing or considering changing. These changes are based on conclusions we've drawn from the respondent feedback provided in the consultation. The evidence behind each proposal is within sections of this document on phase one conclusions.

Geography

Geographies that statistics will be published by

We will publish further detail about the full range of Census 2021 outputs geographies on the ONS website before we publish the first results in late spring 2022.

We will produce all main Census 2021 statistics to geographical boundaries as of May 2022. We will further consider the need to produce data to revised parliamentary or ward boundaries. We will do this after the Boundary Commission for England and the Boundary Commission for Wales conclude their reviews of electoral boundaries in summer 2023.

We will provide users with geography guidance. This will include how to use Output Area look-up files to aggregate data on a best-fit basis to boundaries at different time periods, including the 2011 Census. We will also conduct a survey on the usability of this geography guidance around one year after we publish Census 2021 first results.

Collating data from across the four nations of the UK

We will consider feedback from the consultation alongside information previously gathered from the members of the UK census data user group. This will inform our development of UK census outputs products. It will include a decision on whether to create a combined output for England, Northern Ireland and Wales data whilst we await Scottish results.

Products

Topic summaries

We aim to publish Census 2021 first results in late spring 2022. These are likely to include unrounded population and household estimates for England and for Wales, at local authority level and cross-tabulated by sex and age.

Next, we will publish the univariate topic summary tables in staggered releases. The first topic summary will be on "Demography and migration". In this, we also aim to produce the population estimates, by sex and five-year age group, at lower geographical levels.

We will reorder the publication of the topic summaries from what we originally proposed in the consultation. We will now publish “Sexual orientation and gender identity” after “Health, disability and unpaid care”, “Housing” and “Labour market and travel to work”.

Within the relevant topic summaries, we aim to:

- use more detailed classifications for the tables on passports held, disability, unpaid care and industry
- ensure that information on the total number of Welsh speakers is available in Welsh areas
- add four additional tables on the household population base, to include household language, number of disabled people in the household, veteran status of the household reference person, and number of veterans in the household
- include tables on the number and type of communal establishments and the number of dwellings in an area

Within the Census 2021 data user guide, we will provide guidance on how to produce totals and subtotals, and aggregate the data.

We will also improve the messaging on the [Census 2021 outputs webpages](#) to include the breadth of our product catalogue.

Area profiles

In some cases, the classification proposed for the area profiles was similar to, but slightly less detailed than, the most detailed classification for a variable. In cases where the difference is only one or two categories, we will aim to include the more detailed classification of variables in the area profiles. We will do this where it's viable to do so, without negatively impacting on the usability of the product. If it's unviable, we will ensure the information can be produced using the topic summary tables.

We will also add information on main language and ability to speak Welsh to the area profile specification.

We will produce basic information on the number of residents and households for all parishes and communities smaller than Output Areas (OAs). For those small parishes and communities with a population of at least 50 people, we will assess the feasibility of producing profiles containing a reduced set of variables. These include:

- age
- sex
- economic activity
- ability to speak Welsh
- number of available cars and vans

New questions in Census 2021

Gender identity

We intend to produce a univariate table using the response options in the questionnaire to at least local authority level.

We also intend to investigate the feasibility of producing a detailed univariate table that includes additional categories as submitted. These include, for example:

- genderfluid
- non-binary
- trans man
- trans woman

To protect confidentiality, these may need to be published to higher levels of geography.

Sexual orientation

We intend to produce a univariate table using the response options in the questionnaire to at least local authority level.

We also intend to produce a detailed univariate table that includes additional categories as submitted. These include, for example:

- asexual
- pansexual
- queer

To protect confidentiality, these may need to be published to higher levels of geography.

We're considering how best to produce data for smaller geographies. This may include the production of a reduced classification. For example:

- straight or heterosexual
- gay or lesbian, bisexual or other sexual orientation
- not stated

UK armed forces veterans

We will include all three proposed variables for UK armed forces veterans within the UK armed forces veterans topic summary. We will finalise the specification for the count of UK armed forces veterans in the household based on findings from Census 2021 data.

Proxy responses

To start addressing the need for data on digital exclusion, we will consider the feasibility of producing a household-level variable on proxy response. This would aim to identify

households where someone from outside of the household completed the whole form on their behalf.

We will produce a report that describes the patterns in response to the question asking whether respondents were completing on behalf of themselves or someone else. This report will also discuss how users can draw on information from these variables.

New or amended classifications

Ethnic group

We will consider the feasibility of producing statistics on the Eritrean, Romanian and Showman populations. We may do this by including them within the detailed ethnic group classification or by producing bespoke small population tables for these groups.

We will also engage with representatives from the Showman community to further understand how we should reference this population.

We will consider feedback on how to reflect the difference between the question in England and in Wales when finalising the classification labels. Otherwise, we will continue with our proposed order and labelling of the ethnic group classification.

However, we will ensure that we consider feedback on response option wording when reviewing the [Ethnicity Harmonised Standard](#).

Age

We will publish single-year-of-age data for ages 0 to 99 as a univariate table in phase one of the release schedule. We will consider the feasibility of extending this classification and releasing some information by single year of age for those aged over 99 years. We will consider the feasibility of the other needs raised in relation to later phases of the release schedule.

Country of birth

We will retain the labelling in detailed country of birth classifications that groups countries by when they joined the EU. This labelling will be updated to reflect the categories used in the [Migration Statistics Quarterly Report](#).

We will also assess the feasibility of splitting the “Europe: Other Europe: Other Europe” category into two groups. This would be in all levels of the country of birth classification and in the passports held classification. These two groups will differentiate between those countries that are EU members and those that are not, in some of the country of birth classifications.

Other classifications

We will provide information on marital status by the same groups that were available in the 2011 Census data, except for two categories. We will split the groups “Married” and “In a registered civil partnership”. This is to separate those where the partner is of the same sex from those where the partner is of the opposite sex.

We will consider if we should use a less detailed classification of “type of second address” in more of our outputs. In this assessment, we will consider the feedback on the proposal to create a “Living apart together” indicator variable.

Within the main language detailed classification, we will consider the feasibility of splitting one or more languages out of the category “Other Chinese language”.

Finally, we will consider the feasibility of producing a student household variable.

Engagement and response

Success criteria

It was important that we gathered consultation responses from a broad range of users and organisations, including those who have not previously used census data. This was to ensure that we received a balanced view of the wide-ranging and varied needs of different user types.

Broadening our stakeholder reach is in line with the recommendations made by the Inclusive Data Task Force and the [UK Statistics Authority's response](#) to their report. In this, we commit to creating an environment of trust and trustworthiness. We aim to allow and encourage everyone to count and be counted in UK data and evidence. A key action within this is to build on the Census 2021 community outreach to improve our communications with under-represented groups.

We aimed to receive at least 150 consultation responses, with 100 of these to be from people responding in their professional capacity. We also aimed for the responses to represent a range of sectors. These include, for example:

- central government
- local government
- academic and research organisations
- charity and voluntary organisations

To effectively analyse responses, we aimed to secure at least 10 detailed responses for each of the 25 subsections of the consultation questionnaire. These subsections are listed in “Annex A: How we’re responding to the different consultation sections”.

User engagement

To encourage participation, we promoted the consultation through a multi-faceted campaign that aimed to engage both existing and new census users.

In the months preceding its launch, we signposted the consultation in external meetings and newsletters, and on the ONS website and social media channels.

We hosted three public consultation launch webinars over June and August 2021. In each webinar we introduced to users:

- why we were consulting
- what we were consulting on in each section of the consultation
- how they could take part
- how we’d evaluate their feedback

We emphasised that users only needed to respond to the sections that were of interest, not the entire consultation questionnaire. We also provided time in each webinar to answer questions. As a helpful follow-up, we sent a fact sheet to attendees with a summary of answers to questions most frequently asked across the three webinars.

We promoted the webinars:

- to over 8,000 subscribers of Census 2021 email updates
- in person at stakeholder meetings
- publicly on the ONS social media platforms

The webinars proved popular, with over 490 attendees.

In many cases, multiple people from the same organisation subscribed to email updates or attended meetings. Often, these people then worked together to produce a collaborative response to the consultation.

When requested, we repeated these webinars with content tailored to specific user groups. For example, we ran a session for members of community groups who were newer users of census data and for the House of Commons Library.

We invited users to take part in the consultation within blogs written for the [National Statistical](#) in July 2021, and for the [Social Research Association](#) and [UK Data Service](#) in September 2021. We also presented on aspects of the consultation and encouraged participation as part of ONS-led sessions at two conferences in September. They were the Royal Statistical Society (RSS) and British Society for Population Studies (BSPS) conferences. These events were focussed on data users in academia.

We ran a series of topic-specific consultation meetings with different user groups interested in data and analysis for that topic. We will consider the feedback that we received in these meetings alongside the evaluation of formal consultation responses.

We strongly encouraged all users attending these meetings, or reading these blogs, to take part in the formal consultation. They were asked to provide their user needs, and the justification for these requirements.

Summary of responses

We received a total of 312 responses to the consultation, more than double our target. Of these, 240 were submitted by people in their professional capacity. These included 211 responses submitted by people on behalf of their organisations. Of these organisations, 15 indicated that they have not previously used census data but intend to use Census 2021 data. Individuals submitted 72 responses in a personal capacity.

We received at least 8 professional responses for all sectors, including 126 from local government. All regions of England and Wales were represented in the local government responses. The charity and voluntary sector was the second most represented, with 46 responses.

The organisations represented a wide range of population groups, for example Latin Americans, Romanians, and Showmen. There was also a good representation of organisations from different religions. These included:

- Christians
- Hindus
- Jews
- Muslims
- Ravidassias
- Sikhs

Organisations with a focus on specific issues were also represented, for example, ageing, homelessness and mental health.

We asked respondents which topics they would access data or analysis on once it's made available. Respondents expressed a good level of interest in all topics listed. The topics selected the most were "ethnic group, national identity, language and religion" and "demography, including ageing". Approximately five-sixths of respondents indicated they would access data or analysis on each of these. While "Communal establishments" and "Armed forces" were selected the least, a third of respondents indicated they would access data or analysis on each of these topics.

In "Annex B: Consultation respondents", we have included a:

- table of the 240 professional responses by sector
- list of organisations that responded by sector
- table of the number of respondents who stated an interest in each topic

The subsections of the consultation that received the highest number of responses included:

- "geography"
- "ethnic group"
- "topic summaries and area profiles"

Each of these subsections received around 250 responses. The subsections with the lowest level of completion included:

- "any other comments"
- "impacts on other outputs"

- “emerging data needs”

Each received between 125 and 140 responses. We believe that fewer responses for these three subsections indicates that respondents were able to share their needs with us across other sections of the consultation.

Evaluating responses

Throughout the consultation questionnaire, we emphasised that users must tell us what information they need from Census 2021 data and, more importantly, why they need it.

For example, would the information help steer resource allocation, service planning, policy evaluation, or diversity monitoring? What would the implications be if we did not produce the requested data? Examples could include increased financial costs, reduced quality of data used in decision-making, or not meeting legislative requirements.

It's the information that respondents have told us about how they will use the data that we evaluate. We prioritise different needs by considering the relative benefit to society of each one.

We're evaluating each request and ensuring that the feedback shows a minimum strength of need to progress a proposal. Our decisions fall into three categories.

1. If there's sufficient user need and we're sure the request is feasible, we will action it.
2. If there's sufficient user need, but we're not yet sure if the request is feasible for operational reasons, we will consider the request further.
3. Finally, if there's insufficient information on how the data would be used, the request will be rejected.

When considering a request further, we'd investigate factors such as statistical disclosure, quality and cost. For example, we may need to investigate further:

- how we'd be able to minimise the risk of disclosure
- if a requested change to a product would impact other products
- if the resources required to undertake the request would outweigh the benefits

We're considering only those proposals that impact phase one of the release schedule in this initial consultation response. We will consider all other proposals in the second report. We will publish this prior to the first release of census data in late spring 2022.

Finalising our release schedule and product specifications

We will take into account the proposals made in response to this consultation when considering the user needs for Census 2021 data. We will also consider other stakeholder engagement and findings from the [Inclusive Data Taskforce](#).

We will evaluate the strength of those needs against operational factors, such as data quality, statistical disclosure and cost. From this, we will decide which requests to incorporate into the final design of Census 2021 outputs for England and Wales. We will publish this final design in phases throughout 2022 on our [Census 2021 outputs web pages](#).

Geography: phase one conclusions

Geographies that statistics will be published by

Types of geographies

In the consultation, we asked for what level of geography users wanted data for specific topics. We wanted to gain insight into the extent to which local level data is needed. As we had previously undertaken the [Census 2021 output geography policy, products and services consultation](#), we did not ask questions on the full range of geographies that users needed.

While evaluating responses, it emerged that we have not given users a clear overview of the full range of geographies we plan to use for Census 2021 outputs.

We plan to continue using Output Areas (OAs) as the main geographical base for Census 2021 outputs. In addition, we will make the following administrative geographies available by aggregating OAs, on a best-fit basis. The geographies are:

- clinical commissioning groups, soon to be replaced by NHS England Regions
- counties
- local authority districts
- local education authorities
- local enterprise partnerships
- local health boards in Wales
- National Assembly for Wales constituencies
- parishes or Welsh communities
- postcode districts or sectors
- UK Parliament constituencies
- wards

We acknowledge that some parishes, and communities in Wales, are smaller than OAs. We discuss our proposals for producing a summary set of information for these smaller areas in “Parish profiles for small parishes” within the “Area profiles” section.

Data for National Parks will use an exact geography in line with 2011. We also intend to produce simple population counts for postcodes, as we did following the 2011 Census.

We’re continuing work on exploring census outputs for grid squares.

We’re continuing to investigate how we can best provide other geographies. These are those with boundaries based on census data, such as workplace zones, travel-to-work areas and built-up areas. One option we’re investigating is providing users with tools that allow them to create and upload their own geographies.

In response, we will publish further detail about the full range of geographies we plan to use for Census 2021 outputs on the ONS website. We will publish this information prior to the publication of the first results in late spring 2022.

Definition date

We asked for views on the proposal to provide outputs based on geographical boundaries as defined in May 2022.

Of the 254 respondents that told us whether they agreed with the proposal, 84% agreed.

Some respondents disagreed with the proposal because they were unsure if the geography they required would be included, rather than disagreeing with the definition date.

Others did so because they wanted geographies defined by additional dates as well as the proposed date of May 2022.

We will continue with our proposal to produce all main Census 2021 statistics to geographical boundaries as of May 2022.

Additional definition dates under consideration

Respondents provided three additional specific data needs.

Firstly, respondents identified a need for data aligned with 2011 Census statistics to enable comparison of local areas over time. They also identified wards as especially important in this area. For example, a respondent in a personal capacity, stated:

“To carry out 2021 Census based projections of ethnic group populations needs examination of time trends in the components of change 2011-2021. The trend statistics will need to be harmonized to the planned 2021 geography.”

Secondly, respondents identified a need for data aligned with boundaries following the conclusion and implementation of the Boundary Commission for England’s 2023 review of electoral boundaries. For example, in relation to Parliamentary constituencies, the House of Commons Library said:

“Within the Library, we do have staff capacity to create approximations for new constituencies using existing output-area level data. However, it would be onerous for us to do so every time an MP requests constituency data, and would result in us providing a less timely and effective service.”

In Wales, the Boundary Commission for Wales is undertaking a similar review. The Welsh Government stated:

“We’d support the availability of census data based on new geographies resulting from significant boundary changes, for example from the 2023 Parliamentary Review from the Boundary Commission for Wales.”

The two organisations are due to publish their final reports on electoral boundaries by summer 2023.

Thirdly, multiple respondents from local authorities referenced the Local Government Boundary Commissions ongoing review of ward boundaries. Respondents, whose local authority’s boundary changes will be in place by May 2022, used this fact to evidence agreement with our proposal. Respondents, whose local authority boundaries will change after May 2022, used this fact to evidence need for additional boundaries.

Medway Council explained this need, by stating:

“It would be preferable for the census outputs for Medway to be based upon these new ward boundaries for the following reasons:

1. They’re a defined legally binding set of boundaries for Medway wards
2. Using the new boundaries would allow the council to better plan services for Medway residents
3. Producing data for the new wards will ensure greater accuracy when delivering services i.e. avoid using look-ups to estimate ward profiles
4. The new wards will be in place for the greater proportion of the period between the 2021 census and the next census (administrative or otherwise)
5. Creating data based on the new wards reduces the risk of loss of confidentiality through later revisions to data splits or look-ups between wards
6. Producing data for these boundaries would support democratic processes with existing councillors and potential councillors better able to understand the make-up of new wards within Medway in the run up to the 2023 election”

In response, in late 2023 we will further consider the need to produce data to these revised parliamentary or ward boundaries. In doing this, we will consider the impact of any changes to boundaries on the Census 2021 data against the resources required to produce data to alternative geographies.

We will continue to produce Output Area (OA) look-up files on an annual basis. This will enable users to aggregate OA data on a best-fit basis to boundaries at different time periods, including the 2011 Census. Guidance on how to use these look-up files is available.

Guidance provision for creating other geographical areas

We asked users about our proposal to provide guidance on how to create best approximations of data for new geographical areas where the ONS does not produce statistics.

Of the 245 respondents that told us whether they agreed with the proposal, 90% agreed. Some respondents that disagreed stated that they were unable to accurately assess if the guidance would be sufficient without seeing and using that guidance.

In response, we will conduct a user survey approximately one year after we publish the Census 2021 first results. Within this, we will ask users for their views on the usability of the guidance.

Collating data from across the four nations of the UK

The Office for National Statistics (ONS) carries out the census and produces outputs for England and Wales. Separate censuses are conducted by the Northern Ireland Statistics and Research Agency (NISRA) for Northern Ireland and the National Records of Scotland (NRS) for Scotland.

The ONS are responsible for collating data from across the four nations of the UK to produce UK outputs. As part of this, we've created a UK census data user working group. The group is our primary method of ensuring that UK census data user needs are met where possible.

UK data

We asked respondents if they planned to use UK-level data or comparable data for small areas across the UK. Of the 227 respondents that provided an answer, 51% stated that they would use UK-level data or comparable data for small areas across the UK.

Most responses, especially those from local authorities, discussed using UK data as a comparator. For example, Cardiff Council stated:

“I receive a large number of data requests covering a wide range of topics/variables and usually include Wales and the UK as comparators.”

Some responses also discussed comparison across the UK. For example, Irish Community Care stated:

“I work locally, regionally & nationally with a nomadic population. [...] I need to know that the data is comparable across from Northern Ireland to Scotland to England or Wales. [...] I also need to be able to compare accommodation numbers or population characteristics between countries.”

England, Wales and Northern Ireland data

We will produce England and Wales data, and NISRA will produce Northern Ireland data, as soon as it's feasible to do so. We asked if there was a need to create a combined output with England, Northern Ireland and Wales data in it, whilst we await Scottish results.

Respondents referenced needs for data for England, for Wales, or for England and Wales together. They indicated that data for Great Britain or the UK would be used when available. For example, Brent Council stated:

“When analysing data for the borough, we usually benchmark our position against local, regional and national comparators. At a national level, we'd usually use the following comparators: England, England and Wales or Great Britain – depending on the task at hand, and data available. So, if Census UK data was delayed (due to the later Scottish Census), we'd be most likely to make use of national data for England, or England and Wales.”

In response, we will consider feedback from the consultation alongside information we previously gathered from the members of the UK census data user group. This will inform our development of UK census outputs products, including a decision on whether to create a combined output with England, Northern Ireland and Wales data.

We will continue to update our [UK census data webpage](#) to inform users of progress.

Products: phase one conclusions

We aim to publish Census 2021 first results in late spring 2022. These are likely to include unrounded population and household estimates for England and for Wales, at local authority level and cross-tabulated by sex and age.

Following the release of Census 2021 first results, the remainder of phase one releases include topic summaries and area profiles.

Topic summaries are sets of univariate tables. This means that they only include data from a single variable, for example, religion or general health. The only exception to this, is within the demography and migration topic summary. This will include population estimates, by sex and five-year age bands, at lower geographical levels than included in the first results.

The topic summaries are similar in concept to the Quick Statistics from 2011.

Area profiles allow users to compare local and national statistics. They're similar in concept to those available in [Nomis area reports](#) and include information on a range of topics. The area profiles will be made available for all geographies where the data have already been published. We aim to provide the area profiles down to Output Area level.

Topic summaries

Order of releases

We plan to publish a series of staggered topic summary releases from summer to autumn 2022. We asked users if they agreed with our proposed ordering for the release of these topic summaries. The order proposed was:

- 1) demography and migration
- 2) ethnic group, national identity, language and religion
- 3) sexual orientation and gender identity
- 4) health, disability and unpaid care
- 5) housing
- 6) labour market and travel to work
- 7) education
- 8) armed forces veterans

Of the 255 respondents that told us whether they agreed with this proposed ordering, 77% agreed.

Respondents who disagreed provided a wide range of alternative orderings that reflected their personal or organisation's needs. Within this feedback, there was substantial support for moving several topics nearer the start of the release schedule.

These topics included:

- “Health, disability and unpaid care”: for uses including forecasting future health and care needs, and providing an evidence base for social care reforms
- “Housing”: for use in local planning and understanding the need for affordable housing
- “Labour market and travel to work”: for use in understanding the local economy during the coronavirus pandemic and to inform evidence-based decision-making related to recovering from the pandemic

To support moving these topics forward in the release schedule, respondents provided a consistent view that the ‘Sexual orientation and gender identity’ topic summary should be deprioritised. They reasoned that the ‘Sexual orientation and gender identity’ topic summary would primarily be used for diversity monitoring, rather than planning services, such as health or housing. For example, Essex County Council stated:

“Data to inform ongoing work should be released more quickly than wholly new topics (e.g. sexual orientation and gender identity) which we will need to consider how best to use in future planning and policy development.”

Some respondents also requested to prioritise “education” data, for use in planning education provision, and to prioritise “armed forces veterans” data for use in planning services.

In response, we recommend that we continue with the planned ordering but make one change. We will release the “Sexual orientation and gender identity” topic summary after the “Labour market and travel to work” topic summary. This allows “Health, disability and unpaid care”, “Housing” and “Labour market and travel to work” to be released sooner than previously planned.

Table specifications

We provided the proposed table specifications for the phase one releases in the “Topic summaries” tab of the “Draft proposals for outputs data content” spreadsheet. This spreadsheet is available from the “Related” section of the [Census 2021 outputs consultation webpage](#).

We asked users if the proposed table specifications met their needs.

Of the 250 respondents that stated if the proposed tables would meet their needs, 64% stated that they would fully meet their needs. A further 33% stated that they would partially meet their needs. Only 2% stated that they would not meet their needs.

The area profiles product will meet some of the needs discussed. These are discussed in the “Area profiles” section.

A clear user need was raised to produce further information on Welsh language skills, specifically allowing identification of the population that speaks Welsh. For example, in relation to the proposed Welsh Language Skills table, the Welsh Government stated:

“For the topic summary, it’s important that this table includes the skills separately (understand spoken Welsh, speak Welsh, read Welsh, write Welsh, and no skills in Welsh), in addition to the skills in combination. The ‘headline’ indicator is the number/percentage of people able to speak Welsh.”

Respondents also asked for more detailed classifications for the tables on:

- passports held
- disability
- unpaid care
- industry

We outline respondents’ needs for data on disability and unpaid care in the “Other classifications” section.

Respondents also raised specific needs for additional household population base tables. These include:

- household language
- number of disabled people in the household
- veteran status of the household reference person
- number of veterans in the household

We outline respondents’ needs for veterans’ data in the “UK armed forces veterans” section.

Lastly, respondents outlined a need for information about the number and type of communal establishments, and the number of dwellings.

In response, we aim to include tables that meet these requirements within the relevant topic summaries.

Guidance for producing totals

Some respondents noted that we do not propose to include totals and subtotals in the data tables. For example, Basingstoke and Deane Borough Council stated:

“The lack of a total column for each table will make them difficult to interpret. Users will have to understand how categories nest within each other to ensure that they do not calculate percentages and totals incorrectly. This is not always

obvious, especially to non-expert users or to users that are not sure what the total population is likely to be (and therefore where they have made a mistake).”

To help ensure this does not happen, we’ve designed the category labels to show how the groups can be aggregated up into higher-level categories.

In response, within the Census 2021 data user guide, we will provide guidance on how to produce totals and subtotals and aggregate the data.

Area profiles

We provided the proposed variables to be included in the area profiles in the “Area profiles” tab of the “Draft proposals for outputs data content” spreadsheet. This spreadsheet is available from the “Related” section of the [Census 2021 outputs consultation webpage](#). This did not include information on the calculated variables that we plan to include in this product. All data included within the area profiles will be available to download.

We asked users if the proposed variables for the area profiles met their needs.

Of the 242 respondents that stated if the proposed tables would meet their needs, 70% stated that they would fully meet their needs. A further 28% stated they would partially meet their needs. Only 2% stated that they would not meet their needs.

We asked respondents what additional data they needed for the area profiles if they only partially met or did not meet their needs. Many responses were largely about data that will not be available during the phase one of the release schedule. These included requests for:

- alternative geographies
- cross-tabulations
- data not collected in Census 2021
- population pyramids of sex by five-year age band

User needs already met

Variables can often have different classifications. These classifications split the information within the variables in different ways and allow different analyses. Some respondents requested more detailed classifications for some variables, for example, age, ethnic group and approximate social grade. We will meet these needs by publishing the tables in the topic summaries.

Respondents expressed a need for calculated variables in relation to topic summaries. These included:

- population density

- mean age of usually resident population
- mean household size
- mean number of cars and vans available per household

We will investigate the feasibility of including these variables within the area profiles for a chosen area.

We will meet other respondents' requests through the data visualisation products we're developing. These products will allow the:

- comparison of Census 2021 data with 2011 Census data
- creation of bespoke geographical areas
- data to be shown on interactive maps

In response, we will improve the messaging on the [Census 2021 outputs webpages](#) to include the breadth of our product catalogue.

Specification of area profiles

Respondents requested several other measures be added to the area profiles. Of these, sufficient justification was given to add the variables:

- main language
- ability to speak Welsh

Some respondents also requested that we use a more detailed variable classification, which would only increase the number of displayed categories by one or two.

Respondents requested that the area profiles include sexual orientation and gender identity information. We cannot meet this need as we're not planning to publish this information at Output Area (OA) level, which is a requirement of this product. We expect that the data will be too disclosive to allow publication at small geographies. We will publish sexual orientation and gender identity data in the topic summaries.

In response, we will aim to include the more detailed classification of variables in the area profiles in cases where the difference is only one or two categories. We will do this where it's viable to do so without negatively impacting on the usability of the area profile. If it's unviable, we will ensure that users can produce the information using the topic summary tables.

We will also add information on main language and ability to speak Welsh to the area profile specification.

Parish profiles for small parishes

In the consultation, we proposed to base the main outputs for parishes, or communities in Wales, on Output Areas (OAs) on a best-fit basis. However, we acknowledged that in

some cases parishes are smaller than OAs. As a result, these parishes would be merged with other parishes in outputs.

We stated that we're considering producing an additional set of parish and community profiles alongside the main outputs for these small parishes. These would consist of a summary set of information for all parishes and communities with a population of at least 50 people. These would be similar to those produced from the 2001 Census. We're also considering providing additional very basic information on the number of residents and households for any parishes below that threshold.

We asked if this proposal would be beneficial to users. Of the 243 respondents that stated if they needed additional less detailed profiles for small parishes, 75% said no.

Respondents that required information for parishes smaller than OAs asked for total population and household counts as a minimum. They also defined additional needs for specific individual-level variables and classifications.

For example, the Research and Information team at Gwynedd Council provided the below statement in Welsh, which we've translated into English:

“Hanfodol cael gwybodaeth sylfaenol (o leiaf poblogaeth, oedrannau, iaith Gymraeg) ar gyfer ardaloedd cymuned bychain. Mae nifer o gynlluniau a phrosiectau yn seiliedig ar ardaloedd daearyddol cymunedau (neu gyfuniad ohonynt), sy'n creu'r angen am y data yma ar gyfer pob cymuned yn y sir waeth beth yw eu maint.”

“It is essential to have basic information (at least population, ages, Welsh language) for small community areas. There are a number of schemes and projects based on the geographical areas of communities (or a combination of them), which create the need for this data for all communities in the county regardless of size.”

Also, North Yorkshire County Council stated:

“Total usual residents, broad age breakdown, household numbers and car ownership as a minimum for all parishes. North Yorkshire has a large number of very small parishes. Without this information we'd have no meaningful data to support funding bids, such as for a rural bus service, village hall or play area within a specific parish.”

These requests can be summarised as:

- Age: grouped by ages 0 to 15, ages 16 to 65, and ages 65 and over
- Sex: female and male
- Economic activity: grouped by economically active, economically inactive, and ages 0 to 15

- Speaks Welsh: Yes or no (in Wales only)
- Number of available cars and vans: 0 or 1 or more

In response, we will produce basic information on the number of residents and households for all parishes and communities smaller than OAs. Furthermore, for those small parishes and communities with a population of at least 50 people, we will assess the feasibility of producing profiles containing a reduced set of variables. These include:

- age
- sex
- economic activity
- ability to speak Welsh
- number of available cars and vans

New questions in Census 2021: phase one conclusions

In this section, we focus on the proposals for variable classifications and univariate tables.

We will discuss cross-tabulation with other variables and data analysis plans in part two of our consultation response.

Gender identity

We asked users about their need for gender identity data. Users were able to rank their needs against three factors. Of the 206 respondents that answered this question:

- 50% prioritised cross-tabulating with other variables
- 25% prioritised provision of data for smaller geographical areas
- 18% prioritised data that provides a more detailed breakdown of gender identity
- 11% prioritised data comparable with Scotland and Northern Ireland

In some cases, respondents prioritised more than one factor equally, so the percentages do not sum to 100.

Variable classification proposed

We asked if our proposal to produce gender identity tables aligned with the tick-box response options from the census questionnaire would meet users' needs. This classification includes:

- gender identity is the same as sex registered at birth
- gender identity is different to sex registered at birth
- not stated

Of the 204 respondents that answered this question, 78% stated that this classification would meet their needs.

In response, we intend to produce a univariate table using this classification to local authority level. We will also assess the feasibility of producing tables to this classification at lower geographies, including wards.

Additional detail classification

Where respondents' needs were not met, their concerns were with the "Gender identity is different to sex registered at birth" category. They provided needs for data on a range of specific population groups. For example, in relation to needs for data on trans men and trans women, London Councils stated:

"Experience from the London Grant Programme suggests that trans women do face different issues to trans men (in relation to domestic and sexual abuse,

access to refuge and housing options) so more detailed information would be vital. This will be highly useful for estimating demand for support services for transgender victims of domestic abuse. Trans men and trans women are likely to have very different needs and will be eligible to access different provision (For example, a trans man who is early in his transition or not yet out, or a non-binary person assigned female at birth may be able to access female only refuge space; a transgender woman early in transition very likely wouldn't). In terms of access to health services, trans men and women may need access to different kinds of health care (e.g. gynaecological care for men) which needs to be trans inclusive and appropriate. This information is useful to support boroughs with planning their services."

In a second example related specifically to the non-binary population, The Cabinet Office - Equality Hub stated:

"A more granular breakdown of Census data by gender identity would help us to better refine and fine-tune relevant government policy. For example, data on the size and nature of the population, and changes in the population over time, could help us to anticipate and manage demand for Gender Recognition Certificates, the legal process by which people get their acquired gender to be legally recognised in the UK).

We also had a large number of respondents to the National LGBT Survey 2017 who identified as non-binary. While not a nationally representative sample, they comprised 7% of all respondents (and 52% of all transgender respondents) to the survey which was specifically targeted at sexual and gender minorities. The findings indicated that their experiences were different to other groups. There is currently considerable policy (and other) interest in separating out data on the non-binary population (comprising part of the group "No: Gender identity is different to sex registered at birth") and their related outcomes and experiences. Specifically, recent interest relates to the legal case on X-markers on passports, which is a particularly salient issue for many people in the non-binary population. This is an emerging and complex area of social policy, and one in which we're still developing the evidence base."

The requests submitted across the consultation responses can be summarised as:

- genderfluid
- non-binary
- trans man
- trans woman

In response, we intend to investigate the feasibility of producing a detailed univariate table that includes these additional categories. We'd publish these to a higher or the same level of geography than the less detailed classification.

We will continue to assess the Census 2021 data to understand if we can publish a more detailed classification. This assessment includes consideration of what level of geography we could release.

Sexual orientation

We asked users about their need for sexual orientation data. Users were able to rank their needs against four factors. Of the 206 respondents that answered this question:

- 50% prioritised data cross-tabulated with other variables
- 25% prioritised data for smaller geographical areas
- 17% prioritised data that provides a more detailed breakdown of sexual orientation
- 11% prioritised data comparable with Scotland and Northern Ireland censuses

In some cases, respondents prioritised more than one factor equally, so the percentages do not sum to 100.

Variable classification proposed

We asked if our proposal to produce sexual orientation tables aligned with the tick-box response options on the census questionnaire, would meet users' needs. The classification proposed was:

- straight or heterosexual
- gay or lesbian
- bisexual
- other sexual orientation
- not stated

Of the 204 respondents that answered this question, 81% stated that this classification would meet their needs.

In response, we intend to produce a univariate table using this classification down to local authority level. We will also assess the feasibility of producing tables to this classification at lower geographies, including wards.

Additional detail classification

Where respondents' needs were not met, their concerns were with the "Other sexual orientation" category. For example, the Cabinet Office – Equality Hub stated:

“The use of ‘other’ as a catch all category for a diverse group of people with a range of minority sexual orientations that are not lesbian, gay or bisexual, is of limited value in helping to understand this group or developing targeted policy interventions.”

Respondents provided needs for data on a range of specific population groups. For example, in relation to needs for data on the population that are asexual and pansexual London Councils stated:

“Asexual people experience particular challenges due to their sexuality, which can occur in the context of domestic and interpersonal violence [...]. Asexual victims of abuse may need support for their experiences that are sensitive to their particular experiences. Understanding the number of individuals who self identify as asexual in London will be helpful to supporting boroughs to understand needs of residents and plan and prioritise services.

Bisexual and Pansexual are categories with significant overlap in experiences, due to both being identities characterised by attraction to more than one gender and experience prejudice and discrimination due to being attracted to more than one gender. It is recognised that bisexual women are a particularly high risk of experience domestic abuse and sexual violence [...]. Pansexual and bisexual people are likely to have similar support needs. [...]. Having this information will therefore be useful for understand the needs of Londoners experiencing domestic abuse or sexual violence.”

These requests can be summarised as:

- asexual
- pansexual
- queer

In response, we intend to produce a more detailed univariate table that includes these additional categories. We’d publish these to a higher or the same level of geography than the less detailed classification.

We will continue to assess the Census 2021 data to understand if we can publish a more detailed classification. In this assessment, we will consider what level of geography could be released.

Reduced detail classification

To enable the production of statistics for smaller geographical areas, some respondents specifically discussed creating a less detailed classification. For example, Hampshire County Council stated:

“It is important to have robust data at lower levels of geography to help with planning and targeting resources into the correct areas. If we had data at higher levels it would be difficult to ensure resources were directed to the right places. [...] To increase the amount of data that is able to be published, perhaps some of the classifications could be grouped so that the data meets disclosure control.”

This is in line with our existing plans to consider the feasibility of producing data to lower geographies. Grouping categories can allow us to publish data for smaller geographical areas, or with more complex cross-tabulations, whilst still protecting personal information. For example, the simplest country of birth classification groups all respondents into “Born in the UK” and “Born outside of the UK”.

We’re considering if this is feasible for sexual orientation data. For example, we could produce a classification with the following categories:

- straight or heterosexual
- gay or lesbian, bisexual or other sexual orientation
- not stated

We will continue to progress this work and we will aim to publish data by more detailed classifications where possible.

UK armed forces veterans

We asked users about their need for UK armed forces veterans data. Users were able to rank their need for veteran data against three different factors. Of the 176 respondents that answered this question:

- 55% prioritised data cross-tabulated with other variables
- 32% prioritised data for smaller geographical areas
- 7% prioritised data comparable with Scotland and Northern Ireland data

In some cases, respondents prioritised more than one factor equally, so the percentages do not sum to 100.

Variable proposals

We asked if the three proposed UK armed forces veterans variables would meet user needs. These included:

- armed forces veterans
- armed forces veteran status of household reference person
- number of armed forces veterans in household

Of the 170 respondents that stated if these variables would meet their needs, 91% stated that a combination of one or more of them would meet their needs.

Respondents who stated that these variables would not meet their needs provided three reasons. These include:

- having no plans to use veteran data
- needing veteran data cross-tabulated with other variables
- needing additional information not collected in Census 2021, for example, length of service, time since leaving service or if a veteran is from another country's armed forces

The “veteran status” variable is an individual-level variable. It groups veterans into those who have previously served in the UK armed forces as a regular, as a reserve or as both a regular and a reserve. This variable fully met the needs of 84% of respondents that provided information on whether it'd meet their needs. Veteran status is used to derive two further variables.

“Veteran status of household reference person (HRP)” is a household-level variable that uses the same categories as veteran status. This variable fully met the needs of 62% of respondents that provided information on whether it'd meet their needs.

“Veterans in household” is a household-level variable. It counts the number of veterans in a household who have previously served in the UK armed forces as either a regular or a reserve. This variable fully met the needs of 67% of respondents that provided information on whether it'd meet their needs.

Evidence of the utility of these variables largely relates to cross-tabulations. For example, Shropshire Council stated:

“The proposed variables are very welcome, however more information is required on the composition / type of household they're living in, their gender / age, dwelling type, tenure, bedrooms and occupancy. This is very important to help understand their housing needs (NPPG Local Plan / housing strategy / housing allocation policy), their health and social care needs (Joint Strategic Needs Assessment) and to inform the implementation of the Armed Forces Covenant (and the supporting needs assessment).

Also, there is a new 'due regard' duty coming in this year, for veterans and for serving members of the armed forces and their families. They're considered vulnerable and cited as such in our Social inclusion category in our Equality and Social Inclusion Impact Assessments.”

The Welsh Government also stated:

“The derived variable based on the armed forces veteran status of the household reference person would be useful to be able to look at household characteristics by veteran status, for example, type of accommodation, tenure and overcrowding.

It is thought that some of the issues faced by veterans are often faced by the whole household, not just the veteran.

The second derived variable based on the number of armed forces veterans in the household would also enable us to understand the needs of such households, and whether or not their characteristics vary by the number of veterans present.”

We will continue with plans to produce these three variables. We will finalise the specification for the count of UK armed forces veterans in the household, based on findings from Census 2021 data. We do not propose to include information on UK armed forces veterans in the area profiles.

In response, we will amend the topic summary specification to include the three variables about UK armed forces veterans.

Proxy response variables

We asked users if information on whether a person filled in the Census 2021 questionnaire themselves or on behalf of someone else would be of use. We proposed to make this data available in the secure microdata files, which we will hold within our secure research environment.

Of the 163 respondents that answered this question, only 38% stated that they'd use this information if available.

Some respondents said they'd use it to look at the quality of information available from a census questionnaire form completed on behalf of someone else. We noted feedback around the potential impact on more sensitive questions, such as sexual orientation.

Other respondents discussed using this data to help understand digital exclusion and feed this into service planning. For example, Cambridgeshire County Council stated:

“This data will be used to provide a new insight into potential excluded households where there may be a need for additional service provision / support which has not been previously identified (for example if Council services have not been previously accessed).”

Manchester City Council stated:

“The discovery of the depth of digital exclusion became apparent as a result of the pandemic lockdown and emergency response, this would help to quantify the extent, and any crosstabs that can add more detail would be invaluable.”

However, the currently proposed variable would not allow analysis of digital exclusion. This is because in many households a single individual would have completed the form for the whole household. For example, in a household formed of a couple and a teenage child, one parent may have completed the form for themselves and on behalf of the

other parent and child. This would not tell us whether the other parent and teenage child are digitally literate or not.

In response, to start addressing the need for data that would allow analysis of digital exclusion, we will consider the feasibility of producing an alternative household-level variable. This variable would aim to identify households where someone from outside of the household completed the whole form on behalf of every member of the household. For example, this may have been a member of our Contact Centre staff, or a friend or family member of the household.

This variable could then be combined with other variables, such as whether the form was completed online or on paper, or the usual resident's main language. This may provide a better indicator of digital exclusion.

We will produce a report that looks at this proxy variable. This report will compare the characteristics of those who completed the form themselves, with those whose form was completed by someone else on their behalf. This report will also discuss how users can employ information from these variables.

We will maintain our proposal to make the individual-level variable available in the secure microdata files, which we hold in the secure research environment.

New or amended classifications: phase one conclusions

In this section, we focus on the proposals for variable classifications and univariate tables.

We will discuss cross-tabulation with other variables and data analysis plans in part two of our consultation response.

Ethnic group

We asked users about their requirements for ethnic group data. Users could rank their needs against five factors. Of the 230 respondents that answered this question:

- 50% prioritised data cross-tabulated with other variables
- 43% prioritised data for smaller geographical areas
- 33% prioritised data that provides a more detailed breakdown of ethnic group
- 27% prioritised data comparable with previous England and Wales censuses
- 13% prioritised data comparable with the Scotland and Northern Ireland censuses

In some cases, respondents prioritised more than one factor equally, so the percentages do not sum to 100.

We asked about the geographies users would use the most, in relation to ethnic group data. Of the 237 respondents that answered this question:

- 62% would use national level
- 53% would use regional level
- 80% would use local authority level
- 35% would use Middle Layer Super Output Area (MSOA) level
- 56% would use Lower Layer Super Output Area (LSOA) level
- 39% would use Output Area (OA) level

We asked which ethnic group classification users would find the most useful. Of the 236 respondents that answered this question:

- 49% would use the five-category classification, reflecting the high-level groups on the questionnaire
- 67% would use the classification reflecting the 19 response options on the questionnaire
- 36% would use the full detail of write-in responses if available

We asked users if the additional detail collected through the “Roma” response option and the write-in option for the “African” response option would be useful.

Of the 201 respondents that answered this question, 81% stated they’d use the additional ethnic group detail.

Detailed classification

In developing the detailed ethnic group classification, our overall methodology is to determine the user need. We've assumed that there's a need for all categories included in the 2011 Census.

We've also added proposed classification entries for all population groups where we've identified a user need during the development of the Census 2021 questionnaire. New classifications we've previously committed to and included in the draft detailed ethnic group classification include Jewish, Sikh and Cornish.

Once Census 2021 data are available, we will assess the proposed classification entries to ensure that they meet our disclosure control requirements. We will also investigate whether there are any new categories that received high volumes of census responses. If there are, we will assess if there's a user need for data on the identified population.

We did not provide a proposal for the detailed ethnic group classification within the consultation documentation. This allowed us to more clearly see where there was a strength of need. Respondents shared their requirements when discussing their needs for classifications and analysis.

Most of the information that respondents requested referred to groups that were included in the 2011 ethnic group classification. We intend to include these again in 2021.

There were three further ethnic groups that respondents requested data or analysis on, which we had not included in the proposed classification. These three groups are:

1. Eritrean: requested to understand the needs of asylum seekers from Eritrea
2. Romanian: to understand if this fast-growing group has needs different to those of other populations
3. "Showman / Showwoman" or "Showman": requested to enable equality monitoring and the development of policies that impact populations with a nomadic lifestyle, for example around education and housing

In response, we will consider the feasibility of producing statistics on the Eritrean, Romanian, and Showman populations. We will consider doing this by including them within the detailed ethnic group classification or by producing bespoke small population tables for these groups.

Ordering of the categories within the classifications

We proposed to order the five-category classification alphabetically, with the exception of listing "Other" at the end. For the 19-category classification, each category is assigned to one of the five-category classifications then given a subcategory label. An example of this is "White: Irish". We proposed to order the categories first alphabetically by the five-

category label, listing “Other” at the end. Then within that, we will list the subcategory labels alphabetically with each of the respective “Other” categories listed at the end. The detailed classification would follow the same structure.

Of the 230 respondents that provided their views on the proposed ordering of the classification, 70% said it would meet their needs. Respondents noted that ordering the classification alphabetically would make it easier to scan for particular groups. The Cabinet Office - Equality Hub reinforced their answer by stating:

“We present the data alphabetically by 5 broad groups, (with the exception of 'Any other ethnic group' which comes last) then alphabetically within those groups if that detail is available (Other White, Other Black etc are last within those groups). Our user research found that this was the most acceptable.”

Some respondents provided reasons why the proposal did not meet their needs. These reasons related to a familiarity with the 2011 Census ethnic group classification ordering and the need to compare data over time. Three alternative orders were suggested, which were:

- as per the 2011 Census
- as per the Census 2021 questionnaire
- by size of population

We will continue with our proposed alphabetical ordering for ethnic group variables. We will provide data in a format that allows users to reorder the information in line with their analysis needs.

Language of classification tables

A total of 212 respondents provided their views on whether the current wording used within the ethnic group classifications is appropriate. Of these, 81% stated that it was fully appropriate and 19% stated that some wording was inappropriate.

In several cases, respondents asked for categories, which are grouped together within a single tick-box on the census questionnaire, to be separated. In the case of “Gypsy or Irish Traveller” the acceptability of the wording of the response option was also queried. This feedback will be considered when reviewing the [Ethnicity Harmonised Standard](#).

A small number of users suggested to simplify the classifications, for example reformatting the category “Asian, Asian Welsh, or Asian British: Bangladeshi” to be “Asian: Bangladeshi”. We intend to include the full range of terms, as these indicate the range of identities found within the grouping.

As the high-level categories only included the phrases “Asian Welsh” and “Black Welsh” in Wales, several respondents questioned their inclusion within the classification names. The Cabinet Office - Equality Hub suggested that the phrases be included, but after

“Asian British” and “Black British” respectively. Another respondent suggested including the terms in brackets to indicate that this phrasing was not universally used in the question.

We will consider this feedback when deciding how best to display these labels, to reflect the difference between the question in England and in Wales.

Finally, several respondents raised a need for information on the group “Showman”. In their feedback, they noted the importance of using the term “Showman” rather than “Showman / Showwoman” or “Showpeople”. For example, Future4Fairgrounds stated:

“the term Show People is inappropriate and misleading our community are not show people (we’re not in theatre) they’re SHOWMEN this term is not gender or age specific it is the plural of SHOWMAN. Our community identify with this terminology whether they’re man woman and child. We’ve finally been recognised for our cultural heritage and can now identify using our background but by using the word Showpeople it adds to the confusion”

In response, we will engage with representatives from this community to further understand how we should refer to this population.

Age

We asked users about their need for age data. Users were able to rank their need for age data against five different factors. Of the 208 respondents that answered this question:

- 52% prioritised data cross-tabulated with other variables
- 49% prioritised data for smaller geographical areas
- 37% prioritised data that provides a more detailed breakdown of age
- 29% prioritised data comparable with previous England and Wales censuses
- 13% prioritised data comparable with the Scotland and Northern Ireland censuses

In some cases, respondents prioritised more than one factor equally, so the percentages do not sum to 100.

Written quotes partially support these rankings. For example, Bolton Council stated:

“Small area data is useful in order for us to plan with areas are showing growth in younger/older populations and plan services accordingly. Looking at cross-tabulation via age is a helpful way to consider how different factors interact in vulnerable populations.”

However, respondents discussed the need for data for smaller geographical areas, more than data cross-tabulated with other variables.

Variable classification proposed

We provided the proposed classifications for age in the “Resident age” tab of the “Draft proposals for outputs data content” spreadsheet. This spreadsheet is available from the “Related” section of [Census 2021 outputs consultation webpage](#). We proposed over 50 separate classifications.

We asked if the classifications met user needs. Of the 204 respondents that told us whether the proposal met their needs, 63% stated that it fully met their needs. Another 24% stated that it partially met their needs, and 14% stated that it did not meet their needs.

Only one request was made that impacts the tables proposed for age during phase one of the release schedule. This was a request data by single year of age on those aged over 99 years. Under our current proposal, we’re providing data by single year of age on those aged 99 years and under. Then, we group data into the category of those aged 100 years and over. For example, the Department for Work and Pensions stated:

“For microsimulation modelling, our most important variables are sex and age. For age, showing single year of age up the maximum that this is feasible within small sample considerations is really important to us, especially with the aging population and growing number of those age 100+. Please give consideration to publishing results using single year of age where possible, and to the maximum age that you can.”

Respondents also made several other requests for amendments to the classifications and gave evidence of user need. For example, these requests include classifications that:

- reflect the dates children move between educational levels, for example, primary school and secondary school
- include a break at 17 years and under, instead of 18 years and over, to reflect the services only available to adults and requirements to be in education until age 18
- provide information by single year of age for those aged 18 to 24 years, to better understand student populations
- reflect the change in state pension age to 66, as all labour market tables currently break at age 65 or above

We do not expect to use any of these proposed new classifications in phase one of the release schedule, as data on single year of age is already proposed.

In response, we will consider the feasibility of releasing some information by single year of age for those aged over 99 years in phase one of the release schedule. We will

consider the feasibility of the other needs that respondents have raised when we look at later phases of the release schedule.

Country of birth

Detailed country of birth classification labels

We asked for views on our proposal to simplify the classification labels about country of birth, by removing detail of when a country joined the EU. The labelling in the 2011 Census indicated three groups. These were:

- EU15: citizens of countries that were EU members prior to 2004, for example France, Germany and Spain
- EU8: citizens of Central and Eastern European countries that joined the EU in 2004, for example Poland
- EU2: citizens of Bulgaria and Romania which became EU members in 2007. Between 2007 and 2013, these countries were subject to transitional controls restricting their access to the UK labour market. These restrictions were lifted on 1 January 2014

Since then, the UK has left the EU and Croatia has joined. With the proposed simplified labelling, users could still aggregate the data to produce data by when a country joined the EU for the more detailed classifications. However, it would not be as easy to do so.

Of the 212 respondents that told us whether the proposal met their needs, 80% stated that it fully met their needs. A further 9% stated that it partially met their needs.

Respondents discussed needing to analyse data using this breakdown. For example, Migration Yorkshire stated:

“The change experienced in many neighbourhoods during the past 20 years has been hugely influenced by the accession group countries of the EU (since 2004) [..]. Even though the UK is no longer part of the EU, the communities that have formed as a consequence of free movement still exist and have permanently shaped communities in the UK - and will continue to do so through family reunion and future chain migration for example, in the languages spoken in the UK and the identity of children with migrant parents. The Census would give us an understanding of how communities have changed post-Brexit and who (from the accession group) has stayed and intends to make their permanent home in the UK. Their needs and characteristics remain an important part of service planning and community cohesion initiatives.”

Similarly, Manchester City Council stated:

“The need to monitor impact of BREXIT continues, particularly for reasons such as we currently face with a lack of drivers and health workers. This means we need to separate out EU from the rest of Europe in the census outputs and to distinguish between pre/post2004. This is to inform decisions about economic strategies, e.g. marrying data against loss of EU workers in certain industries, being able to separate out and match against changes to migration flows to make assessments of whether migration being affected by BREXIT, COVID19 or different work opportunities/challenges”

Of the respondents who fully agreed with our proposal, some suggested they did not need the data split in this way. Others stated that if they did require the split data, they could undertake the aggregation themselves.

For example, the Cabinet Office – Equality Hub stated:

“Removing detail on when a country joined the EU is fine, if future analysis requires this we can manually group the countries into cohort based on when they joined.”

In this feedback, respondents have expressed a clear need for this information.

In response, we will retain the labelling in detailed classifications about country of birth that groups countries by when they joined the EU. This labelling will be updated to reflect the categories used in the [Migration Statistics Quarterly Report: August 2020](#).

EU membership in other country of birth classifications

Respondents spontaneously raised the concern that in the less detailed classifications it would not be possible to separately identify EU member countries from other European countries. For example, Bristol City Council stated:

"We don't need to know when countries joined the EU but would like to be able to clearly identify those countries currently within the EU. As such, we'd like 'Europe: Other Europe' split into 'Europe: EU' and 'Europe: non-EU' in all Country of birth classifications at all levels. [...]"

The effects of Brexit on our population demographics are currently unknown. Census 2021 results are eagerly awaited in order that we can analyse change since 2011 and understand how our population has changed, particularly the change in the population who were born in the EU."

In response, we will assess the feasibility of splitting the “Europe: Other Europe: Other Europe” category into two groups in all levels of the country of birth classification. This split would allow users to differentiate between the countries that are EU members and those that are not.

We will also assess the feasibility of ensuring that users can separately identify EU member states in the passports held classifications.

Other classifications

We can provide more detail on other topics from Census 2021 that now have categories that were not available from the 2011 Census. These include:

- type of accommodation
- central heating
- marital status
- second address
- disability
- unpaid care

To reconfirm the need for more on these topics, we asked users if it would be useful, and if so, what impact it would have on their work.

A total of 201 respondents told us they would use the extra detail from one or more of the expanded variables.

Type of accommodation

We added a new category of “a flat, maisonette or apartment: part of another converted building (for example, former school, church or warehouse)” to the Census 2021 questionnaire.

Out of 201 respondents, 73% stated they’d use the extra type of accommodation detail.

Respondents told us that this information would impact analysis of housing, used in Local Plans, and Housing Needs Assessments. The impact would be an increase in the depth of understanding of the current housing stock. For example, Gloucestershire County Council stated:

“with a changing city centre as a result of COVID this would be useful in helping us to understand where buildings have already been transformed to serve a different purpose and give us a benchmark as this is likely to become more common in the future”

This could directly impact planning policies. For example, Birmingham City Council stated:

“We could then respond to this by drafting planning polices which would directly address the issues identified by the data, for example by broadening the range of accommodation types to be delivered within new development proposals.”

Respondents also mentioned the potential of the information for use in assessing the accessibility of housing stock.

Where feasible, we will use variable classifications that include this extra data.

Central heating

We made several changes to the central heating question in the Census 2021 questionnaire. We split the categories:

- “Gas” into “Mains gas” and “Tank or bottled gas”.
- “Solid fuel” into “Wood (for example, logs, waste wood or pellets)” and “Solid fuel (for example, coal)”
- “Other central heating” into “Renewable energy (for example, solar thermal or heat pumps)”, “District or communal heat network” and “Other”

Out of 201 respondents, 55% stated they’d use the extra central heating detail.

As with type of accommodation information, respondents indicated they would use this information in Local Plans, and Housing Needs Assessments.

Respondents told us how they would use the new categories when developing housing policy. They also told us how the new categories would feed into analysis of progress towards climate change commitments. For example, Cheshire West and Chester Council stated:

“Information on households using renewable energy would provide us with insight and help inform our plans to make local homes more energy efficient and promote renewable energy.”

Similarly, South Tyneside Borough Council stated:

“Central heating indicator will give us a good idea of how many households have renewable-energy based heating (given that households make up a high proportion of our carbon emissions) so will help inform policy around climate change.”

Respondents also told us that the information would be useful in analysis related to fuel poverty and could directly inform ‘Winter warmth’ campaigns.

Where feasible, we will use variable classifications that include this extra data.

Legal marital or civil partnership status

On the Census 2021 questionnaire, there was a new question after the marital status question. This new question asked about whether a marriage or civil partnership was with “Someone of the opposite sex” or “Someone of the same sex”.

Out of 201 respondents, 57% stated they'd use the extra marital status detail.

Respondents told us that they'd use information on marital status to monitor diversity and support you in meeting the obligations of the Equality Act 2010. For example, Welsh Government stated:

"The additional information about marriage/civil partnership with the opposite/same sex will improve our understanding of the population in Wales and will complement the information available on sexual orientation etc."

However, no respondents provided evidence of specific policies or services that the additional detail would help steer.

In response, when considered against the small number of people in several of the groups, we've reduced the detail to be included in our classifications. In our most detailed classification, we will include:

- never married and never registered a civil partnership
- married - opposite sex
- married - same sex
- in a registered civil partnership - opposite sex
- in a registered civil partnership - same sex
- separated, but still married
- separated but in civil partnership
- divorced
- formerly in a civil partnership now legally dissolved
- widowed
- surviving partner from civil partnership

We believe this classification will meet the user need for data, whilst minimising the risk of statistical disclosure for the smaller groups. We will apply this reduced classification when we derive related variables, such as living arrangements.

Second address

We split the category "Other" into "Partner's address" and "Other".

Out of 201 respondents, 44% stated they'd use the extra second address detail.

Respondents told us that they largely use this information in assessments of housing market needs. It can help identify how the housing stock is being used and to understand the available housing in the area.

Only one respondent mentioned using the new category. Basingstoke and Deane Borough Council stated:

“useful to help understand the level of couples living apart together.”

In response, we will consider if we should use a less detailed classification in more of our outputs. This assessment will include consideration of the feedback on the proposal to create a ‘Living apart together’ indicator variable.

Disability

In Census 2021, we re-worded questions relating to physical or mental health conditions or illness. This was to collect data that more closely aligns with the definition of disability in the Equality Act 2010. We also split the question into two parts, resulting in separate information on:

- those without a condition or illness
- those with a condition or illness that did not impact their day-to-day life

Out of 201 respondents, 76% stated they’d use the extra disability detail.

Respondents told us that the changes to the question wording, to allow a better definition of the population defined as disabled, was an important and valuable change. They said that this will, for example:

- inform health and social care services
- support the production of Joint Strategic Needs Assessments and Local Plans
- support analysis relating to targeting specific services

One respondent, in a professional capacity, stated:

“we had a recent question about those needing disabled toilets in a local town -- this would have helped us identify the need better”

Several respondents also noted the value of understanding the difference between the two newly separated categories. This is to understand the population more fully and to identify groups who may not have further needs now but may in the future. For example, Age UK stated:

“The additional detail on disability will enable us to quantify the population who have a longstanding illness, and to determine what proportion of those people would be defined as having a disability, may need support, and could be understood to have a need for social care.”

Where feasible, we will use variable classifications that include this extra data.

Unpaid care

We increased the range of response options for hours of unpaid care. We split the options:

- “Yes, 1 to 19 hours a week” into “Yes, 9 hours a week or less” and “Yes, 10 to 19 hours a week”
- “Yes, 20 to 49 hours a week” into “Yes, 20 to 34 hours a week” and “Yes, 35 to 49 hours a week”

Out of 201 respondents, 64% stated they’d use the extra unpaid care detail.

Respondents told us that the unpaid care data would inform health and social care services. They said it’d support the production of Joint Strategic Needs Assessments, Local Plans and Carers Strategies. Age UK clearly defined the utility of the new categories by stating:

“The additional detail on the number of hours of unpaid care provided is enormously important. There is evidence that people are more likely to exit the labour market if they’re providing 10+ hours of unpaid care a week, and this detail will enable this question to be addressed using detailed national data.

Similarly, only those who provide 35+ hours of unpaid care in a week are eligible for Carers Allowance, so the breakdown of the 20+ hours category into 20-34 and 35-49 will enable a better understanding of take-up of Carers Allowance to be investigated.”

Respondents also told us they would use the additional detail to better understand health and wellbeing. For example, the Health Foundation stated:

“Any additional detail around the number of unpaid carers will allow us to better understand how it impacts people’s wellbeing and health. More detail [...], would give us greater insight into how much unpaid care impacts an individual’s ability to work.

Respondents also noted that the extra detail would allow them to calculate more accurate approximations of the total amount of unpaid care provided in a community. This in turn, will allow users to produce better forecasts of the resources needed to support this population.

Where feasible, we will use variable classifications that include this extra data.

Other classifications

Across the consultation response there have been further requests for more detailed information. These requests generally related to questions with write-in options, such as main language, religion and national identity. In most cases, these requirements are met through the existing classification proposals.

For main language, there was a request to separate the category “Other Chinese language”. This was requested to provide further information on the size of the

populations speaking each of the 10 languages contained within this category. The respondent indicated that this would aid the planning of translation services.

In response, we will consider the feasibility of splitting one or more languages out of the category “Other Chinese language”.

There was also a request to create a variable that identified households where all usual residents are students. Welsh Government stated:

“There is a need to understand the prevalence of houses in multiple occupation within local areas, and the characteristics of those who live in them (age, sex, ethnicity, marital status). It will be important to be able to distinguish ‘all student’ properties from those who are not solely occupied by students. This will give insight into the extent to which people who are not students are choosing this form of housing, for instance, if they’re not in a position to afford to buy property. This information will be important for local authorities when preparing local housing market assessments and for considering policy options in relation to affordable housing.”

In response, we will consider the feasibility of producing a student household variable.

Next steps

Once again, we'd like to thank everyone who gave us their views by responding to the consultation. The evidence and comments respondents have provided are invaluable in helping us to identify and develop Census 2021 outputs and analysis products that users need.

We're currently continuing our evaluation of the 312 consultation responses and preparing a formal reply to the feedback we received. Please [email the Census 2021 Outputs and Dissemination team](#) or [visit our outputs webpages](#), if you'd like to give us more feedback.

Consultation response - part two

In 2022, prior to the release of Census 2021 first results in late spring, we plan to publish part two of our response to the consultation feedback.

In part two of our response, we will focus on respondents' feedback about Census 2021 products to be released across the second and third phases of our release schedule. These phases cover the release of Census 2021:

- multivariate data
- non-standard outputs
- more detailed analytical reports

We will also discuss any univariate data that we plan to produce from potential new derived variables. While these products contain univariate data, we will release them in the second phase of the release schedule.

We aim to be as open and transparent as possible. Alongside the publication of our more detailed consultation response report in 2022, we also plan to publish all responses submitted to this consultation.

We will moderate responses before publishing them to identify and remove any offensive, inappropriate, commercially sensitive or market sensitive content. We will only publish the names of individuals or organisations where we've been given consent to do so.

Finalising and publishing our plans

We will action the recommendations in this document prior to the release of the first results from Census 2021 in late spring 2022. We've summarised these recommendations in the section "Summary of changes to phase one proposals

Following that, we will action the recommendations from the second consultation responses ahead of each subsequent phase of the release schedule.

In this, we will conduct a feasibility assessment of recommendations we've committed to investigating. This feasibility assessment may lead to the conclusion that we should not make the change being investigated.

We will update our [Census 2021 outputs](#) webpages to address the information gaps identified in this consultation response.

Once our plans for each phase of the release schedule are finalised, we will publish the detail of those plans.

Harmonisation

We will also continue to work closely with our colleagues at the National Records of Scotland and the Northern Ireland Statistics and Research Agency. Our aim is to maximise the harmonisation and comparability of census results and products.

Annex A: How we're responding to the different consultation sections

The consultation document and questionnaire were structured into eight sections to help users find the topics they wished to consult on. These sections were:

1. Why we're consulting
2. Shape of the outputs and analysis release schedule
3. Main changes to variables compared to the 2011 Census
4. Proposals for potential new derived variables
5. Population-base specifications
6. Taking a census during a period of change
7. Paradata
8. Any other comments

The consultation questionnaire was further divided into 25 subsections, to help respondents find the topics they wished to consult on. The only mandatory section was section 1, which asked for information on who was responding. All the questions within other sections of the consultation were optional. When responding to questions in sections 2 to 8, we asked users to provide both their requirements and the justification for those requirements.

In this annex, we list which subsections of the consultation questionnaire we discuss in this consultation response and which we will discuss in part two. We plan to publish part two of our response in 2022, before we publish Census 2021 first results in late spring.

We've allocated any responses submitted in the subsection "Any other comments (8a)" for evaluation across the relevant sections of each report. We've applied the same treatment to any comments provided in a particular section, that are relevant to another.

We will not be sharing information collected in subsections "Contact details for you or your organisation (1a)" and "Publishing consultation responses (1c)". We're only using this information for operational reasons relating to the publication of the responses to the consultation.

Response to the consultation: part one

In this report, we focus on the feedback we've received about the Census 2021 products we're releasing in phase one of our release plans. We asked these questions in the following subsections of the consultation questionnaire.

Summary of responses

- Data user type (1b)

Shape of the outputs and analysis release schedule – phase one: conclusions

- Geography (2a)
- Topic-based summaries and area profiles (2b)
- UK data (2d)

Main changes to variables compared to the 2011 Census: conclusions

- Sexual orientation and gender identity (3a)
- Armed forces veterans and the proxy answer question (3b)
- Ethnic group classifications (3c)
- Age, country of birth and other classifications (3d)

Response to the consultation: part two

In early 2022, we will publish part two of our consultation response. In this second report, we will discuss the feedback we received about the later phases of the Census 2021 outputs release schedule. This includes plans for producing:

- new variables
- multivariate tables
- detailed analysis
- paradata

We asked questions on these topics in the following subsections of the consultation questionnaire.

Shape of the outputs and analysis release schedule – phase two: conclusions

- Multivariate data (2c)

Proposals for feasibility work to derive new variables: conclusions

- Education and employment (4a)
- Health and living arrangements (4b)
- Accommodation type and vacant addresses (4c)
- Additional data needs (4d)

Population base specifications: conclusions

- Alternative population bases (5a)
- Small populations (5b)

Taking a census during a period of change: conclusions

- Place of residence (6a)
- Economic activity and employment (6b)
- Travel to work and workplace zones (6c)
- Impacts on other outputs (6d)
- Emerging data needs (6e)

Paradata: conclusions

- Household and individual response rates (7a)
- Mode and language of completion (7b)

Annex B: Consultation respondents

Professional and organisational responses

Professional responses by sector

We received 312 responses to the consultation. People in their professional capacity submitted 240 of these. Table 1 shows the breakdown of these professional responses by sector.

In a small number of cases, it was unclear if the respondent was answering the consultation in a personal or professional capacity. In these cases, we contacted the respondent to confirm how they would like their response recorded. As such, a small number responses are recorded differently to how they were answered in the consultation response we received.

Table 1: Number of responses received in a professional capacity by sector

| Sector | Number of professional responses | Percentage of professional responses |
|---|----------------------------------|--------------------------------------|
| Central government | 9 | 4 |
| Local government | 126 | 53 |
| Other public body | 11 | 5 |
| Academic or research | 17 | 7 |
| Religion or faith | 8 | 3 |
| Charity and voluntary | 46 | 19 |
| Commercial | 8 | 3 |
| Other or sector not provided ¹ | 15 | 6 |
| TOTAL | 240 | 100 |

¹ Other includes responses where the respondent answered "Other", "Journalist" or did not provide their sector.

List of organisational responses by sector

Of the 240 responses to the consultation, which were given in a professional capacity, 211 of these were submitted on behalf of a named organisation. These organisations are listed in this section.

Central government

- Cabinet Office - Equality Hub
- Department for the Economy NI - Further Education Division, Transformation Team
- Department for Work and Pensions
- Department for Work and Pensions - Housing Analysis
- Department of Health and Social Care
- Home Office - Demand Modelling
- Welsh Government

Local government

- Armed Forces policy – 5 local authorities of Gwent
- Basingstoke and Deane Borough Council
- BCP Council
- Birmingham City Council
- Blackburn with Darwen Borough Council
- Bolsover District Council
- Bolton Council
- Braintree District Council
- Brent Council
- Bristol City Council
- Buckinghamshire Council
- Caerphilly County Borough Council
- Calderdale Council
- Cambridge City Council
- Cambridgeshire County Council
- Cardiff Council
- Cheshire East Council
- Cheshire West and Chester Council
- City of Lincoln Council
- Copeland Borough Council
- Croydon Council

- Cyngor Gwynedd – Ymchwil a Gwybodaeth
Gwynedd Council – Research and Information
- Dartford Borough Council – Planning Services
- Department for the Economy – Skills Strategy branch
- Derby City Council
- Derby City Council – Policy and Insight Team
- Derbyshire County Council
- Derbyshire County Council – Place Department
- Doncaster Council (DMBC)
- Dorset Council
- Durham County Council
- East Suffolk Council
- East Suffolk Council (second response)
- East Sussex County Council
- Enfield Council
- Epping Forest District Council
- Erewash Borough Council
- East Riding of Yorkshire Council (ERYC)
- Essex County Council
- Flintshire County Council
- Folkestone and Hythe District Council
- Gateshead Council
- Gloucestershire County Council
- Greater London Authority
- Greater Manchester Combined Authority (GMCA)
- Hampshire County Council
- Hertford Heath Parish Council
- Hertfordshire County Council
- Herefordshire Council - Intelligence Unit
- Hull City Council - Public Health Intelligence Team
- Huntingdonshire District Council
- Isle of Wight Council
- Kent County Council
- Kirklees Council
- Kirklees Council - Community Languages Service
- Knowsley Metropolitan Borough Council
- Lancashire County Council
- Lewisham Council

- Local Government Association and Local Areas Research and Intelligence Association (LARIA)
- London Borough of Barking & Dagenham
- London Borough of Barnet
- London Borough of Bromley (Bromley Council)
- London Borough of Camden
- London Borough of Harrow
- London Borough of Havering
- London Borough of Hillingdon
- London Borough of Redbridge - Business Intelligence Team
- London Borough of Richmond upon Thames
- London Borough of Tower Hamlets
- London Councils
- Manchester City Council
- Medway Council
- Middlesbrough Council
- Migration Yorkshire
- New Forest National Park Authority
- Newcastle City Council
- Norfolk County Council (NCC) and Norfolk Office of Data & Analytics (NODA)
- North Devon Council
- North East Derbyshire District Council
- North East Local Enterprise Partnership (North East LEP)
- North Lincolnshire Council
- North West Leicestershire District Council
- North Yorkshire County Council
- Northumberland County Council
- Norwich City Council
- Norwich City Council (second response)
- Nottingham City Council
- Oldham Council
- Oxford City Council
- Portsmouth City Council
- Publica Group - providing services for West Oxfordshire District Council, Cotswold District Council and Forest of Dean District Council
- Redcar and Cleveland Borough Council
- Rochdale Borough Council
- Rochdale Council

- Royal Borough of Kensington and Chelsea
- Salford City Council
- Sefton Metropolitan Borough Council
- Sheffield City Council
- Shropshire Council
- Solihull Metropolitan Borough Council
- South Oxfordshire and Vale of White Horse District Councils
- South Tyneside Borough Council
- Southampton City Council
- Southend-on-Sea Borough Council
- Stratford-on-Avon District Council
- Swansea Council
- Taff's Well & Nantgarw Community Council
- Tameside Metropolitan Borough Council
- Test Valley Borough Council
- Tewkesbury Borough Council
- Trafford Council
- Walsall Council
- Wandsworth Borough Council
- Warrington Borough Council – Public Health Team
- Warwickshire County Council – Business Intelligence
- West Northamptonshire Council
- West Sussex County Council
- Worcestershire County Council
- Yate Town Council

Other public body

- Comisiynydd y Gymraeg
Welsh Language Commissioner
- Equality and Human Rights Commission
- Her Majesty's Lieutenancy of South Yorkshire
- House of Commons Library
- Public Health Wales NHS Trust
- Social Care Wales
- South Downs National Park Authority
- South Yorkshire Fire & Rescue
- Wales Safer Communities Network

Academic or research

- Forward Partnership
- International Communities Organisation
- Queen's University Belfast – Geography
- The Diaspora Initiative – a migration focused Research Network
- UK Data Service
- University of Edinburgh – EDINA
- University of Oxford – Migration Observatory

Religion or faith

- British Ravidassia Council
- Church of England – Research & Statistics Unit
- Hindu Forum Europe & Hindu Matters Britain
- Institute for Jewish Policy Research (JPR)
- Muslim Census
- Muslim Council of Britain (MCB)
- Newham Muslim Forum
- Sikh Assembly

Charity and voluntary

- Age UK
- Alliance of Kashmiri Arts
- British Kashmiri Identity Campaign (BKIC)
- British Sikh Report Team
- Caring Together
- Central Mosque of Brent
- Centre for Cities
- Centre for Homelessness Impact
- Charity for Civil Servants
- Chinese In Wales Association
- Church of England Soldiers', Sailors' and Airmen's Housing Association Ltd (CESSA HA)
- Citizens Advice Fareham
- CLAUK - a coalition of Latin American organisations from the voluntary sector
- Council of Turkish Cypriot Associations (UK)
- Crisis
- Difference CIO
- DOR - Romanian Diaspora CIC

- Friends, Families and Travellers
- Gendered Intelligence
- Irish Community Care
- Kashmir Development Foundation
- Kinship
- Lancashire LGBT
- Latin American House
- Letchworth Garden City Heritage Foundation
- LGBT Foundation
- LGBT+ Network for Change
- Nettlestone & Seaview (Men's) Shed
- Pak Pashtoon Association UK
- People Matter IW
- RAF Benevolent Fund
- Romanian Women in the UK
- Royal Association for Deaf people (RAD)
- Sense
- Showmen's Mental Health Awareness Charity
- Stonewall
- Supreme Sikh Council UK
- The Fatherhood Institute
- The Health Foundation
- The Isle of Wight Society for the Blind – known as Sight for Wight
- The UK Nepal Friendship Society
- Thurrock BME Group
- West Beckenham Residents' Association

Commercial

- CACI Ltd. – Marketing Solutions Division
- IMobile connect ltd
- JICPOPS – Joint Industry Committee for Population Standards
- More Metrics Limited
- Porism Ltd
- Sail4Kashmir

Other or sector not provided

- Association of Independent Showmen
- Country Land and Business Association (CLA Cymru)

- Figura Planning Ltd
- Future4Fairgrounds
- Honorary Consul of Romania in Wales
- Kashmir Freedom Movement
- Liftshare & Mobilityways
- Migration Advisory Committee
- National Bargee Travellers Association (NBTA)
- National Secular Society
- The Market Research Society (MRS)
- The Showmen's Guild of Great Britain

Summary of total respondents' topic interest

We asked respondents which topics they'd access data or analysis on once available. Across the 312 submissions we received, respondents stated that they would access data or analysis a broad range of census topics. Over a third of respondents selected each topic. Table 2 shows the number and percentage of respondents that would access data or analysis on each topic.

Table 2: Number of consultation respondents that would access data or analysis for each topic area

| Topic | Number of respondents | Percentage of respondents |
|---|-----------------------|---------------------------|
| Ethnic group, national identity, language, and religion | 247 | 79 |
| Demography, including ageing | 239 | 77 |
| Health, disability and unpaid care | 227 | 73 |
| Housing | 218 | 70 |
| Education | 211 | 68 |
| Labour market | 202 | 65 |
| Migration | 188 | 60 |
| Travel to work | 169 | 54 |
| Sexual orientation and gender identity | 168 | 54 |
| Communal establishments | 157 | 50 |
| Armed forces veterans | 127 | 41 |
| None or not stated | 23 | 7 |