

Responding to the FY 2019 Solicitation Community-based Adult Reentry Program

This presentation was prepared by The Council of State Governments (CSG) Justice Center, in partnership with the U.S. Department of Justice's Bureau of Justice Assistance. Presentations are not externally reviewed for form or content. The statements reflect the views of the authors and should not be considered the official position of the CSG Justice Center, the members of The Council of State Governments, or the Bureau of Justice Assistance.

Speakers

Andre Bethea, Policy Advisor, Bureau of Justice Assistance, U.S. Department of Justice

Jan De la Cruz, Policy Analyst, The Council of State Governments Justice Center

Janet Lane, Senior Policy Analyst, The Council of State Governments Justice Center

Agenda

- ❖ **Introductions**
- ❖ Overview of the SCA Community Reentry Grant
- ❖ Keys to a Successful Application
- ❖ Additional Information
- ❖ Q&A

The U.S. Department of Justice Bureau of Justice Assistance

Mission: To provide leadership and services in grant administration and criminal justice policy development to support local, state, and tribal justice strategies to achieve safer communities.



www.bja.gov

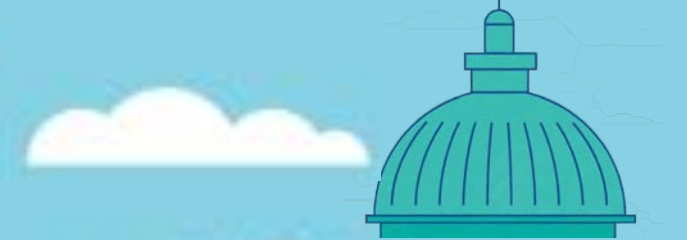
The CSG Justice Center

- ❖ National nonprofit, nonpartisan organization
- ❖ Membership association representing state officials in all three branches of government
- ❖ Develops research-driven strategies and tools to increase public safety and strengthen communities



**Justice
Center**

The Second Chance Act



- ❖ The Second Chance Act supports state, local, and tribal governments and nonprofit organizations in their work to reduce recidivism and improve outcomes for people leaving incarceration.
- ❖ The Second Chance Act has supported over \$400 million in reentry investments across the country.
- ❖ The Second Chance Act was reauthorized in December 2018 as part of the landmark First Step Act.

- ❖ **Delivers** technical assistance (TA) and training for Second Chance Act grantees
- ❖ **Advances** the knowledge base of the reentry field
- ❖ **Promotes** what works in reentry and successes of grantees
- ❖ **Facilitates** peer networks and information exchange
- ❖ **Provides** information for people returning to communities and their families

Latest News and Resources in Reentry



National Criminal Justice Initiatives Map



Directories for State and Local Reentry Services



www.NationalReentryResourceCenter.org

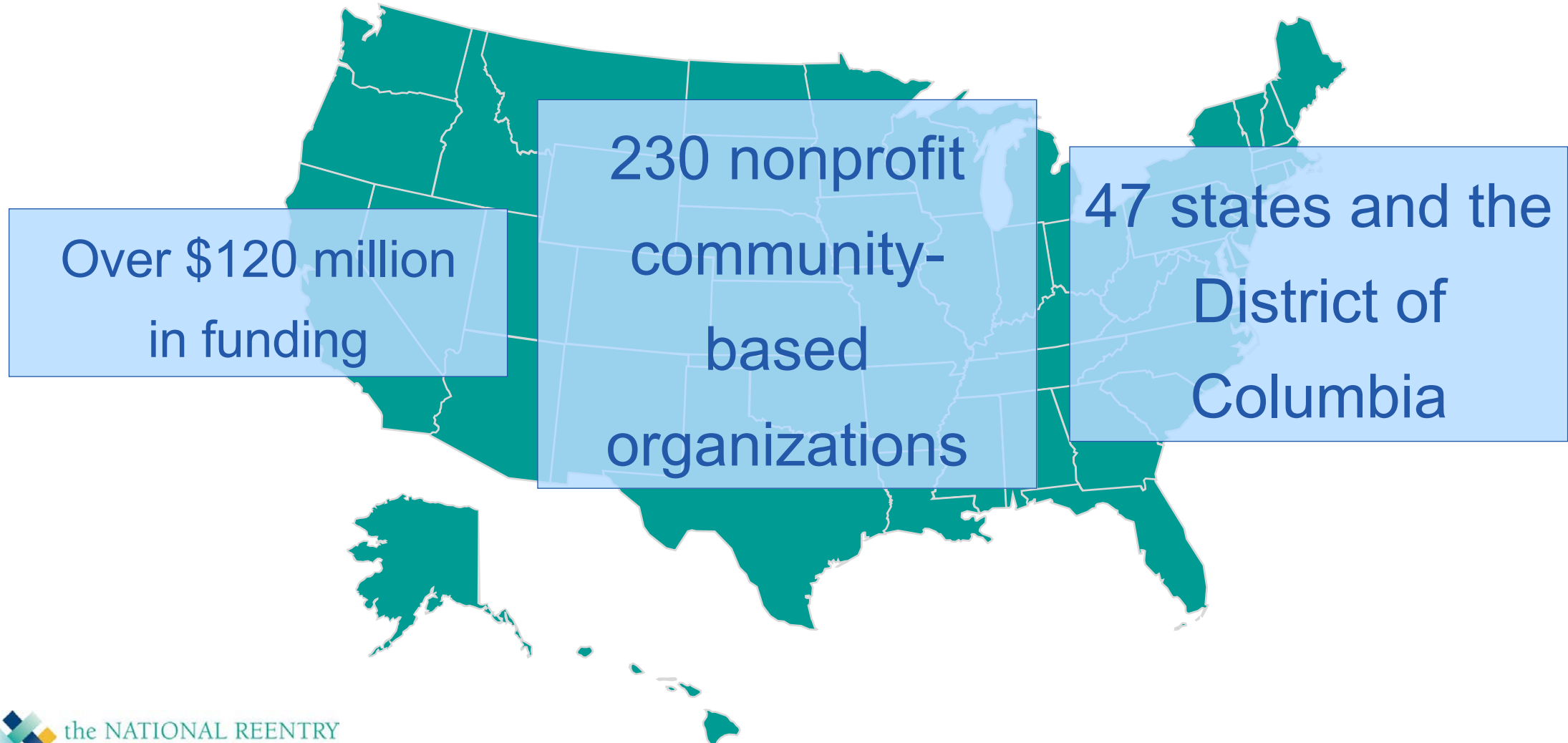


April 30, 2019

Agenda

- ❖ Introductions
- ❖ **Overview of the SCA Community Reentry Grant**
- ❖ Keys to a Successful Application
- ❖ Additional Information
- ❖ Q&A

SCA Community Reentry Grants: By the Numbers



Award Information

- ❖ Category 1 – Community-Based Adult Reentry
 - (Competition ID: BJA-2019-15329)
- ❖ Category 2 – Community-Based Adult Reentry with Small or Rural Organizations
 - (Competition ID: BJA-2019-15330)
 - Must demonstrate annual operating budget of less than \$1,000,000

48-month performance period starting October 1, 2019

❖ Solicitation is available at:

<https://www.bja.gov/funding/SCAComRe19.pdf>

Applications are due on **June 11, 2019.**

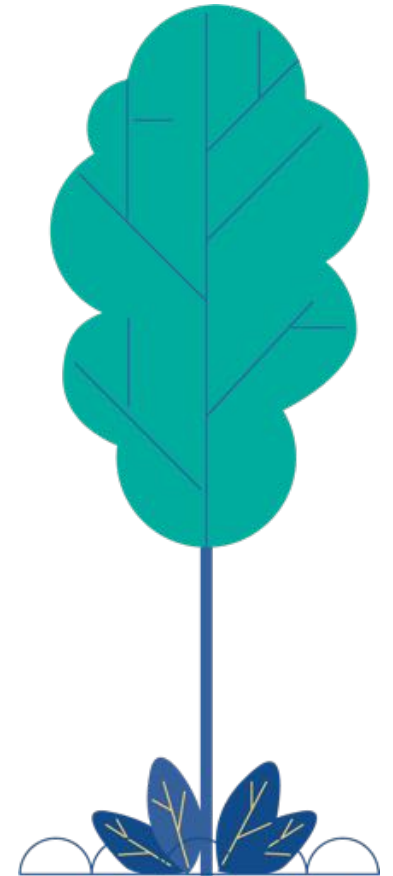
Award Information (cont.)

Category 1

- ❖ Up to \$1,000,000 per grant
 - \$200,000 for planning period
 - \$800,000 for implementation
- ❖ Must serve at least 150 people

Category 2

- ❖ Up to \$500,000 per grant
 - \$100,000 for planning period
 - \$400,000 for implementation
- ❖ Must serve at least 75 people



Program Goals & Objectives

Implement or expand on reentry programs that demonstrate strong partnerships with corrections, parole, probation, law enforcement, and other reentry service providers.

Case Management Plans

- Address criminogenic risks and needs
- Include delivery or facilitation of services

Partnerships

- Increased partnerships between community- and faith-based organizations and other local reentry stakeholders
- corrections, law enforcement, probation/parole, prosecutors, etc.

Eligible Applicants



- ❖ Community-based nonprofit organizations
- ❖ Faith-based nonprofit organizations
- ❖ Tribal nonprofit organizations
- ❖ Federally recognized Indian tribal governments (*as determined by the Secretary of the Interior*)

Planning Phase

- ❖ Applicants must include a timeline and plan for a planning phase that lasts up to 12 months
- ❖ Planning and Implementation Guide (P&I Guide) must be completed in consultation with NRRC TA provider during this phase
- ❖ Awarded applicants will have access to a portion of total grant funds during this phase
 - Category 1 = \$200,000
 - Category 2 = \$100,000

Grant Review Criteria

Selection Criteria	Weight
Description of the Issue	10%
Project design & implementation	40%
Capabilities & competencies	25%
Plan for collecting data for the solicitation's performance measures and sustainability plans	15%
Budget	10%

See pages 15-31 of the solicitation for the full list of requirements.

Agenda

- ❖ Introductions
- ❖ Overview of the SCA Community Reentry Grant
- ❖ **Keys to a Successful Application**
- ❖ Additional Information
- ❖ Q&A

Mandatory Requirements

- ❖ The applicant should:
 - Have an MOU/MOA with correctional partner
 - Serve medium- to high-risk adults (as determined by a criminogenic needs assessment)
 - Have an established relationship with independent evaluator
 - Develop a plan for measuring and reporting outcomes

See page 7 of the solicitation for other requirements.

Priority Considerations

- ❖ Utilization of a Randomized Control Trial (RCT)
 - Studies employing RCT methods to assess the effectiveness of programs and practices.

Priority Considerations (cont.)

- ❖ Serving moderate-high or high risk offenders
 - Applicants that propose strategies to reduce violent recidivism, among high risk offenders under supervision who have a history of serious violence and are identified in concert with local and/or state law enforcement.

Priority Considerations (cont.)

- ❖ Proposed work within Qualified Opportunity Zones (QOZs)
 - OJP will, as appropriate, give priority consideration in award decisions to applications that propose projects that directly benefit federally designated QOZs.

See page 9 of the solicitation for more priority considerations.

Examples of Program Components



- ❖ Gender-responsive, trauma-informed, and culturally based programming
- ❖ Pre- and/or post-release mentoring
- ❖ Veteran-specific programming
- ❖ Cognitive Behavioral Interventions
- ❖ Job readiness and employability services
- ❖ Substance addiction treatment
- ❖ Housing support and homelessness prevention
- ❖ Medical and mental health care services
- ❖ Family-supportive programming

Helpful Webinars

BJA Grant Education Series:

<https://www.bja.gov/funding/webinars.html>

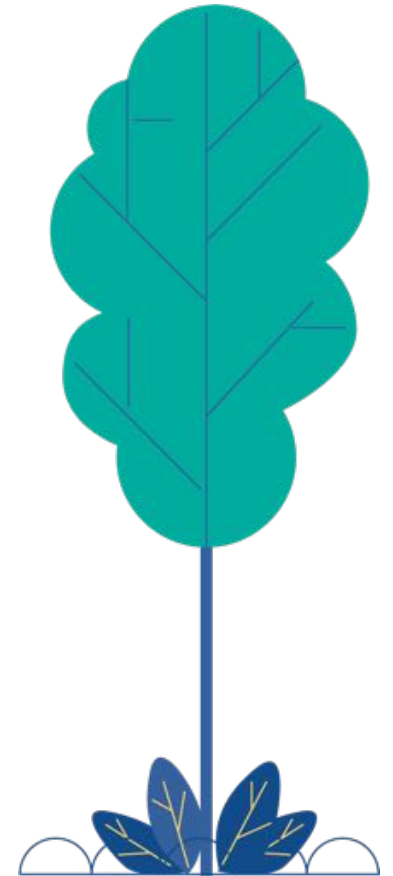
- ❖ The importance of using the Application Checklist
- ❖ How applications are successfully submitted
- ❖ How subawards can be incorporated into an application
- ❖ How to attach documents



<https://www.bja.gov/funding/submitting-your-application-avoid-these-common-mistakes-webinar.pdf>

Helpful Webinars (cont.)

- ❖ Winning Grants—Writing Your Way to Success
 - <https://csgjusticecenter.org/nrrc/webinars/winning-grants-writing-your-way-to-success/>
- ❖ Winning Grants—Implementation and Organizational Capacity
 - <https://csgjusticecenter.org/nrrc/webinars/winning-grants-implementation-and-organizational-capacity/>



Additional Resources

Mentoring as A Component of Reentry: Practical Considerations from the Field

- ❖ Informed by grantees, the field, and evaluators
- ❖ Five sections including mentoring models, training, and evaluation
- ❖ Program examples and call outs on relating information specifically to peer mentoring



Additional Resources (cont.)

- ❖ Community-based Organizations and Corrections Agencies: Relationship Building Questionnaire:
 - https://csgjusticecenter.org/wp-content/uploads/2017/06/6.27.17_Corrections-Questionnaire_Mentoring-as-a-Component-of-Reentry.pdf
- ❖ Research Partner Q&A:
 - <http://www.psnmsu.com/documents/ResearchPartnerQ&A.pdf>
- ❖ BJA Grant Education Series & Solicitation webinars:
 - <https://www.bja.gov/funding/webinars.html>

Agenda

- ❖ Introductions
- ❖ Overview of the SCA Community Reentry Grant
- ❖ Keys to a Successful Application
- ❖ **Additional Information**
- ❖ Q&A

Financial Information

- ❖ Applicants are strongly encouraged to review the DOJ Grants Financial Guide, found at:
<https://ojp.gov/financialguide/DOJ/index.htm>
- ❖ DOJ Grants Financial Management Training is available at:
<https://ojp.gov/financialguide/DOJ/index.htm>



Applying

- ❖ Applicants must register at <https://www.grants.gov/web/grants/register.html> prior to submitting an application.
- ❖ For complete instructions on how to register and submit an application, visit: <https://www.grants.gov/web/grants/support.html>
- ❖ Applications are due **June 11, 2019 11:59 p.m. ET**

Important Contact Information

❖ For questions about the process of submitting an application:

- Contact the Grants.gov Customer Support Hotline at 800-518-4726, 606-545-5035, at <https://www.grants.gov/web/grants/support.html>, or at support@grants.gov.
- The Grants.gov Support Hotline operates 24 hours a day, 7 days a week, except on federal holidays.

❖ For assistance with unforeseen Grants.gov technical issues beyond an applicant's control:

- Contact the National Criminal Justice Reference Service (NCJRS) Response Center at 800-851-3420, via TTY at 301-240-6310 (hearing impaired only);
- Email grants@ncjrs.gov or web chat at <https://webcontact.ncjrs.gov/ncjchat.jsp>
- NCJRS Response Center hours are 10 a.m. to 6 p.m. ET, Monday-Friday, and 10 a.m. to 8 p.m. ET on the solicitation close date.

For Full Details...

Solicitation is available at

<https://www.bja.gov/funding/SCAComRe19.pdf>

Applications are due on

June 11, 2019.

Questions

Andre Bethea

Policy Advisor

Bureau of Justice Assistance

Office of Justice Programs, U.S. Dept. of Justice

Andre.Bethea@usdoj.gov

Jan De la Cruz

Policy Analyst

The Council of State Governments Justice Center

jdelacruz@csg.org

Janet Lane

Senior Policy Analyst

The Council of State Governments Justice Center

jlane@csg.org



Thank you!

Join our distribution list to receive National Reentry Resource Center updates!

csgjusticecenter.org/subscribe

For more information, contact info@nationalreentryresourcecenter.org