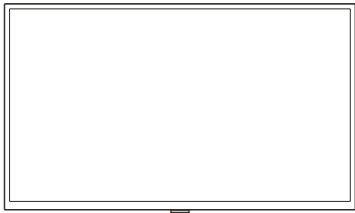
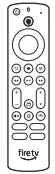


What's in the box



Fire TV 2-Series
(32"/40") High Definition



Fire TV Alexa
Voice Remote



TV stand
(2 legs)



2 AAA batteries
(remote)



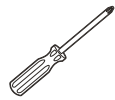
4 screws

STOP: Before using your new product, please read these instructions and keep them for reference. Do not plug your power cord into the wall until all other devices have been connected.

Setting up your Fire TV

⚠ WARNING: Do not install while the TV set is turned on. This may result in personal injury from electric shock.

Tools you'll need

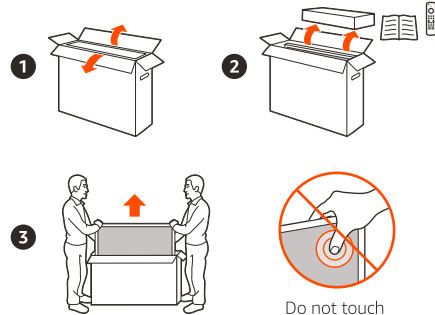


Phillips screwdriver



Scissors

Getting your TV out of the box



Do not touch
the screen

Remove legs, remote, documents, and any other accessories from the upper styrofoam tray before removing the TV from the box. Remove the TV, keeping it in its plastic bag, from the carton and place it face down on a large, flat surface like a table or countertop.

Before disposing of the packaging, make sure you've removed all parts and accessories.

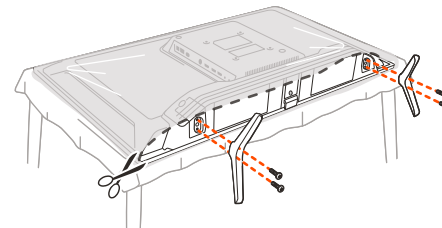
Base installation

⚠ WARNING: Never place a TV in an unstable location. The TV may slide or fall and cause serious injury to a child or adult and serious damage to the TV.

With the TV resting on a flat surface, attach the double-legged support base to the TV using the included screws.

The legs are interchangeable and can be installed on either side.

Note: Illustrations below are provided for reference only and may differ from the actual product appearance.



Wall mounting

⚠ WARNING: If you mount this TV on a wall, follow the instructions exactly as set out in the instructions provided with the wall mount (sold separately). If it is not correctly mounted, the TV may slide or fall and cause serious injury to a child or adult and serious damage to the TV.

This requires 2 people.

(32") TVs: VESA mounting pattern: 100 mm x 100 mm

Compatible screws: Type M4, 8 mm length

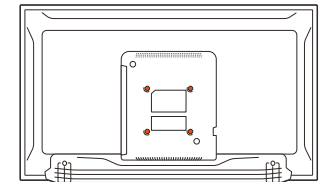
(40") TVs: VESA mounting pattern: 200 mm x 100 mm

Compatible screws: Type M6, 12 mm length

To ensure safe installation, follow these safety precautions:

- Check that the wall can support the weight of the TV set and wall mount assembly.
- Follow the mounting instructions provided with the wall mount.
- The TV set must be installed on a vertical wall.
- Only use screws that are suitable for the wall's material.
- Ensure no one can trip over the TV cables.

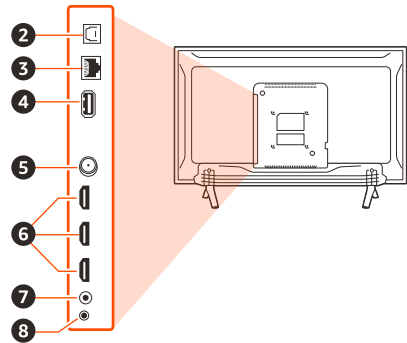
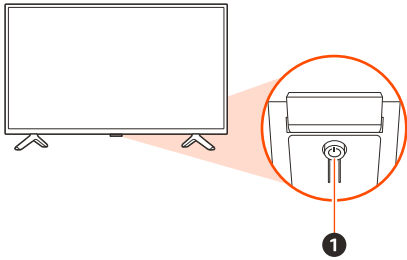
Note: Illustrations below are provided for reference only and may differ from actual product appearance.



Where to place your TV

- Don't place the TV on an unstable surface.
- Place the TV somewhere that allows good ventilation.
- Don't use the TV near damp or cold areas.
- To protect the TV from overheating, keep it away from direct sunlight.
- Don't expose the TV to dripping or splashing liquids. Don't place objects filled with liquid, like a vase, on or near the TV.

Getting to know your Fire TV



1. Power button

Press once to turn the TV on while in standby mode.

2. Optical audio output (S/PDIF)

Connect an optical cable (sold separately) from the TV to the optical input on your receiver or soundbar.

3. Ethernet/LAN

Ethernet (10/100 Mbps) to connect to your internet modem or home network.

4. USB

Can be used to connect a USB cable.

5. Antenna/Cable

Can be used to connect a coaxial cable or antenna.

6. HDMI ports

The 3 HDMI (High-Definition Multimedia Interface) ports can be used to connect devices like gaming consoles or cable and satellite boxes.

7. IR emitter port

Connect an IR emitter cable to control other devices by IR commands from your TV.

8. Audio out/Headphone

Connect headphones or an analog soundbar (sold separately) to the TV's headphone jack.

General operation

Power on your TV

Follow the instructions on this page for switching on your TV and the remote control before going on to the following pages and the channel setup procedure.

1. Plug the power cord into an outlet.

Note: If the power cord is damaged, do not connect it to an outlet under any circumstances, as there is a risk of electric shock.

2. (Optional) Connect an outside aerial to the antenna-in port on the back of the TV. This is required to receive broadcast television.

3. Press the power button, located at the bottom center of the screen.

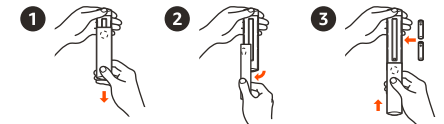
4. You can also use the included remote to power on your TV.

Turn off the TV

Pressing the power button on the remote or on the TV puts the TV into standby mode. To completely power off the TV, unplug the cord from the electrical outlet.

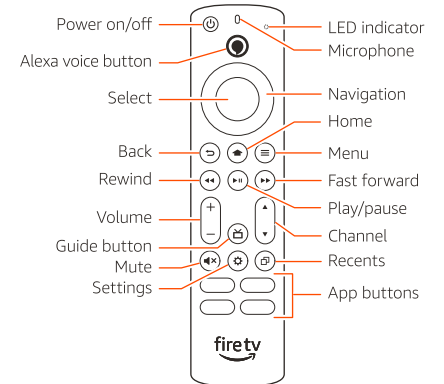
Remote pairing

Insert two AAA batteries into the remote control.



Your Fire TV Alexa Voice Remote should automatically be paired with your new Fire TV. If there are issues, you will be prompted to pair your remote by pressing down the Home button. If you continue to have issues, please try reinserting or replacing the batteries and repeating this step.

For more troubleshooting and information, go to amazon.com/devicesupport.



Complete the on-screen setup

Using your Fire TV Alexa Voice Remote, follow the on-screen instructions to choose your language, select your wifi network, and register your device.

Network connection

Your TV is internet-ready. It can be connected to your home network in two ways:

- Wired, using the Ethernet connector on the back of the TV.
- Wireless, using your wireless network.

Connecting to a wireless network

1. Ensure you have:
 - A router broadcasting a high-speed wireless signal.
 - Your wifi password if your network is password protected.
2. Select your wifi network from the networks displayed on the screen.
3. If prompted, add your wifi password through your remote during the on-screen setup.

Connecting to a wired network

1. Ensure you have:
 - An Ethernet cable (not included) long enough to reach your TV.
 - A router or modem with an available Ethernet port.
2. Connect one end of the Ethernet cable to the Ethernet port on your Fire TV and the other end to any available Ethernet port on your modem or router.
3. Your Fire TV will automatically configure your Ethernet settings. Follow the on-screen instructions to complete your setup.

Tips and troubleshooting

Wireless network

- Using the included remote control, go to Settings > Network from the Main Menu, then select your network from the list displayed. If your network is hidden, enter your network name.
- If you see a lock icon, your wifi network requires a password. This password is not your Amazon account password.
- For best performance, use the 5 GHz band on your wireless router if available. Do not place your router in a cabinet as it may impact wifi signal strength.

Wired network

If you're having trouble with your Ethernet connection, verify that the Ethernet cable is properly connected and then restart your TV.

General tips and troubleshooting

No picture, no sound

1. Check to see that your power cord is securely connected to the electrical outlet.
2. Make sure you have selected the correct input source.
3. Plug another electrical device into the power outlet to make sure the outlet is working.

Normal picture, no sound

1. Make sure the TV is not muted. Press the Vol+ button to increase volume.
2. Check to see if your TV speaker is turned off. Go to Settings and select Display & Sound.
3. If you have connected external sound equipment, ensure it is powered on and that you have selected the correct input source.

For more troubleshooting and information, go to amazon.com/devicesupport.

Something's always on

You'll never run out of things to watch on Fire TV. Easily download your favorite apps like Netflix, Prime Video, YouTube, Hulu, and Disney+. Access thousands of hours of free movies and TV episodes from popular ad-supported streaming apps like Amazon Freevee, Tubi, and Pluto TV. Watch or browse live TV, sports, news, and channels from Live on the Main Menu. With Profiles, everyone in your household can quickly get recommendations tailored to what they like. To learn more about your Fire TV, visit amazon.com/firetv.

Press and ask Alexa

Press the Alexa voice button on your included Fire TV Alexa Voice Remote to easily find, launch, and control content. Alexa can also play music, answer questions, read the news, check the weather, and set alarms.

Things to try with your Fire TV

"Alexa, find movies."

"Alexa, play top music hits."

"Alexa, rewind 30 seconds."

"Alexa, what's the weather?"

"Alexa, set a timer for 5 minutes."

To learn more about what Alexa can do, just ask, "Alexa, what can you do?"

Certain services are subject to change or withdrawal at any time, may not be available in all languages, areas, or HD, and may require separate subscriptions.