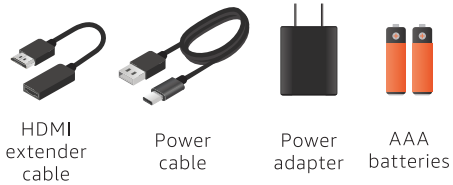


## MEET YOUR FIRE TV STICK 4K MAX



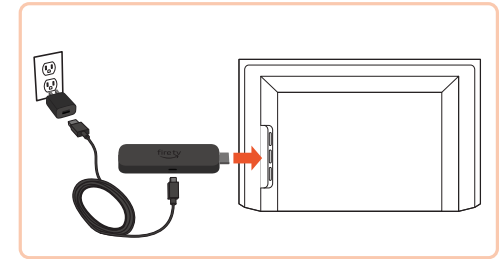
### Also included:



## MEET YOUR ALEXA VOICE REMOTE ENHANCED



## CONNECT YOUR FIRE TV STICK 4K MAX



- 1 Plug your Fire TV Stick 4K Max into your TV's HDMI port and connect one end of the power cable to your stick.
- 2 Connect the other end of the power cable to the power adapter, then plug the adapter into a power outlet.

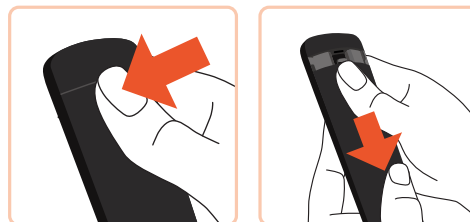
## SET UP YOUR REMOTE



**Optional:** use the included HDMI extender if it's difficult to plug your Fire TV Stick 4K Max into your TV's HDMI port.

- 3 Turn on your TV and switch to the appropriate HDMI input.

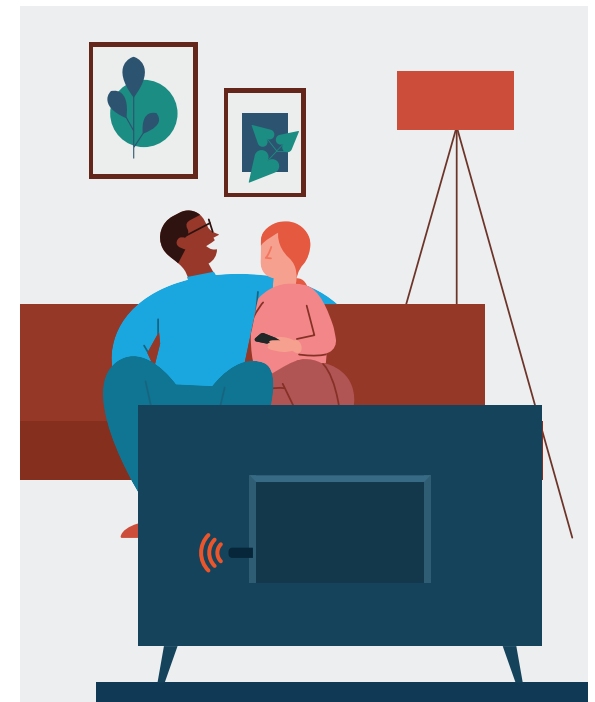
**Tip:** use the remote that came with your TV to select the HDMI source or input.



- 1 Press and hold your thumb on the arrow to release the latch.
- 2 While pressing firmly, slide open the cover.

- 3 Insert included batteries. Your remote should automatically pair with your new Fire TV Stick 4K Max.

**Tip:** if the remote isn't pairing, press and hold Home until the LED flashes, or try reinserting the batteries.



**SCAN FOR MORE HELP  
AND  
ACCESSIBLE INSTRUCTIONS**



Scan the QR code or visit:  
[amazon.com/setup/firetvstick4kmax](https://amazon.com/setup/firetvstick4kmax)