



Elektrobit

EB Assist solution

Test and validate ADAS & automated driving functions

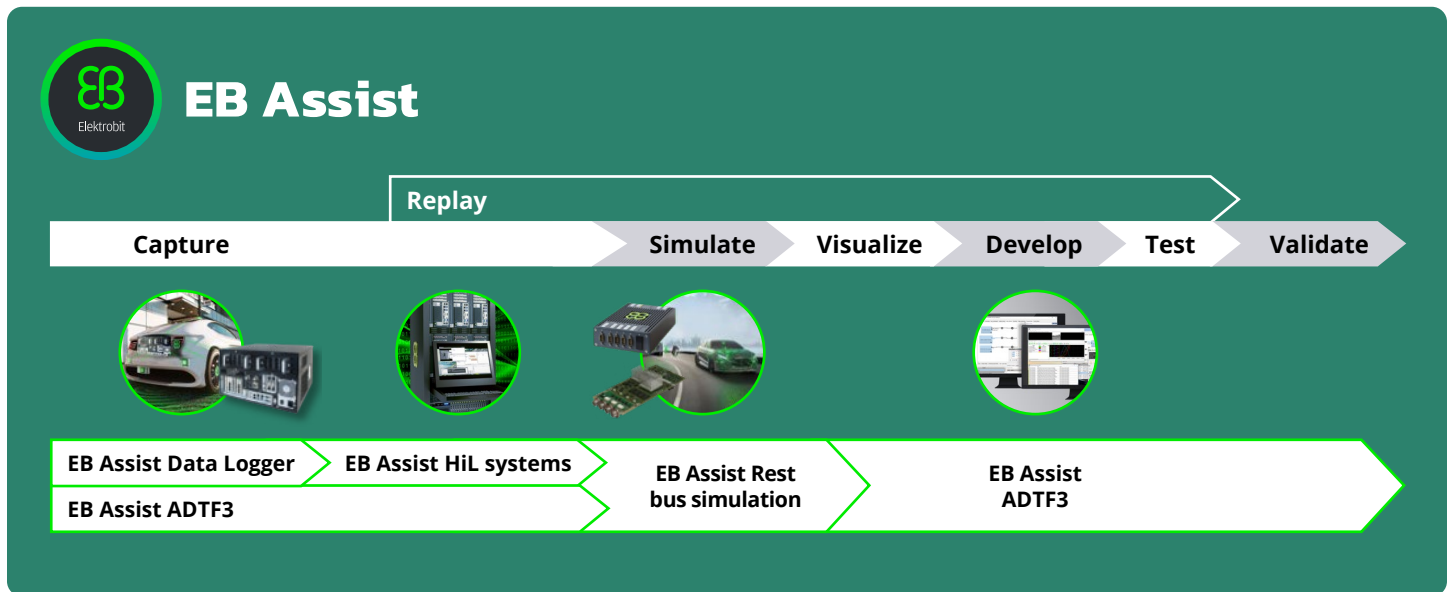


www.elektrobit.com



Capture and Replay with EB Assist solutions

Develop, visualize, and validate driving functions



Benefits

- Save costs** with reusable components
- Seamlessly integrate** and customize in highly precise test process environment
- Single source solution** to solve your complex issues working with our dedicated experts
- Fulfill requirements** when building flawless driving functions
- Ready to use** throughout the entire automated driving toolchain

EB Assist Logger Solution

Capture massive amounts of data

Featuring Elektrobit's own **cutting-edge technology**

→ **Capture video with speeds up to 12 GB per second for up to 1.5 hrs of driving** ←

- FPD3 and GMSL2/3 frame video grabber cards
- CAN, FlexRay, LIN, Automotive Ethernet with EB 5200 bus measurement card
- 100/1000 Base-T1 Automotive Ethernet with EB 7200 modular I/O interface card
- GPUs, network cards
- **Time-synchronized** interfaces
- **Low power consumption** 9-48VDC, 12VDC, 24VDC, 48VDC
- **Detachable storage** with up to **256 TB**

Capture up to 32 cameras!



2x detachable storage



It's not just a box, it's a full solution

The validation of automated driving functions requires customized and efficient solutions adapted and configured according to each use case. EB Assist provides the logger hardware and software and will help you to integrate- giving you a full solution!

It's scalable. The wide range of interfaces for different sensors and ECU connections make it a highly modular and flexible. High processing power allows capturing of multiple sensor streams in parallel. You can easily combine multiple logger systems to scale your system for video or bus data capturing.

It has high-performance. Benefit from a customized system for low, mid, and high variant use cases (up to 768GB RAM).

Link to our HiL. EB Assist Logger Solution is a high-performing, reliable logging device for your test vehicle. Combined with Elektrobit's HiL solution, it's the foundation of a strong and powerful replay and simulation tool for ADAS/AD ECU testing.

Features

- **Customizable turnkey solution** enables a fast and flexible realization of your requirements (e.g. capturing large amounts of synchronized video and bus data, extension of storage or PCI-e interfaces)
- **Modular system** supports all common automotive interfaces (video signals FPDIII /GMSL2/3, CAN-FD,HS/LS, FR, ETH/BroadR-Reach, LIN, GPS)
- **Flexible and customizable** I/O configuration based on individual requirements
- **High-computing performance** for data processing and data visualization storage or PCI-e interfaces

Benefits

- **Save money**
Capture massive data in one test drive (instead of multiple trips)
- **Improve the quality of data logging**
Highly precise time stamping on hardware 25ns resolution
- **Save time during development and validation**
Visualize and test with our Automotive Data and Time-Triggered Framework (ADTF3)
- **Delivery and support from one single source**
Get complete and professional support with short response times during your configuration decision and beyond

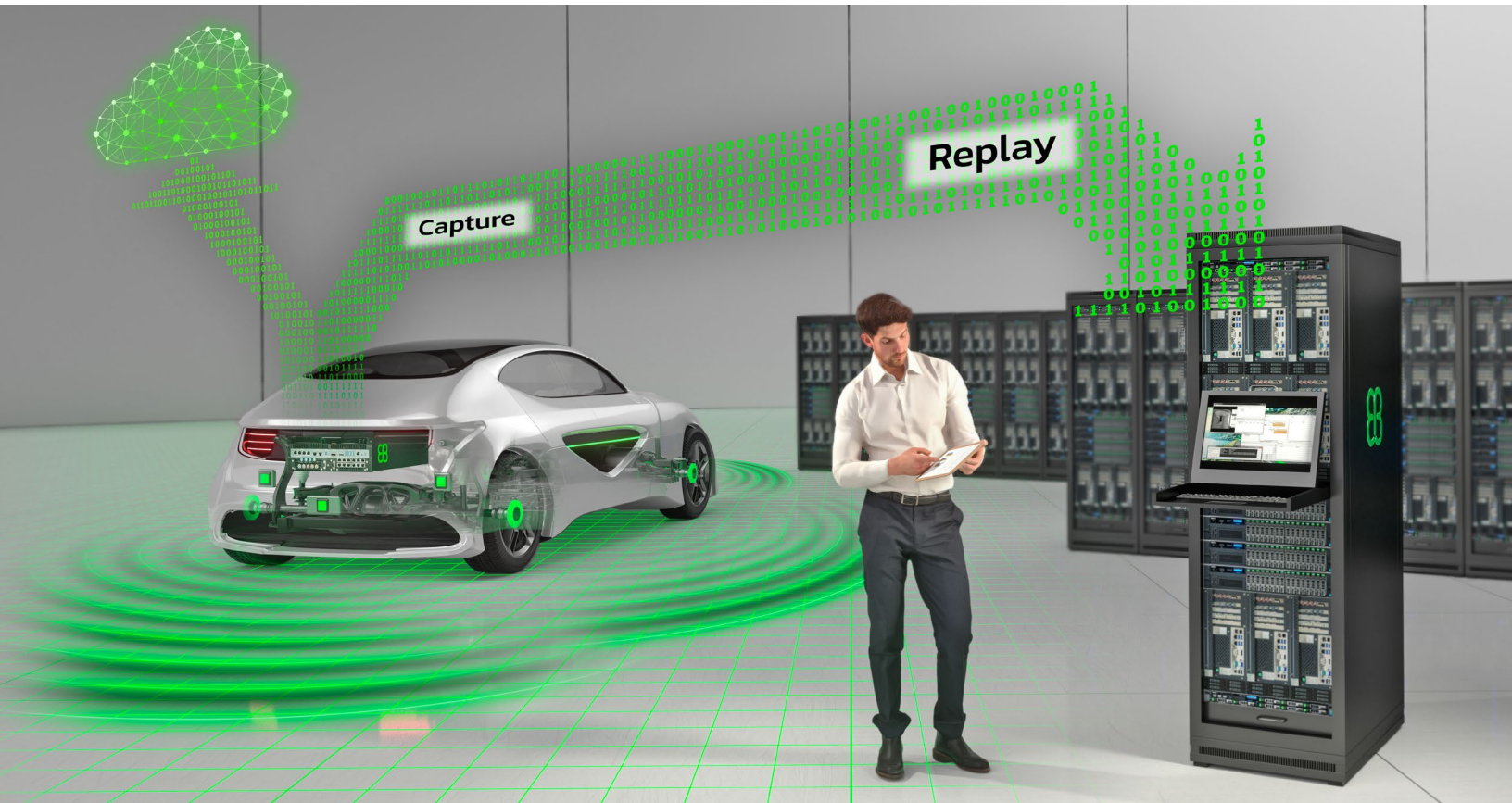
www.elektrobit.com

EB Assist HiL solution

Custom validation solutions: HiL test solutions by Elektrobit

Preparing for volume production of automated vehicles includes millions of miles of real driving scene processing. Suitable server farms are needed to meet the required test coverage.

Elektrobit offers expertise to customize HiL test solutions through hardware or the cloud to meet your needs in ADASIS (Advanced Driver Assistance Systems Interface Specifications). Test the functions, system integration, and communication of ECUs in a simulated environment, processing real driving scene data-in-the-loop to validate your ECUs and their functionality.



Features

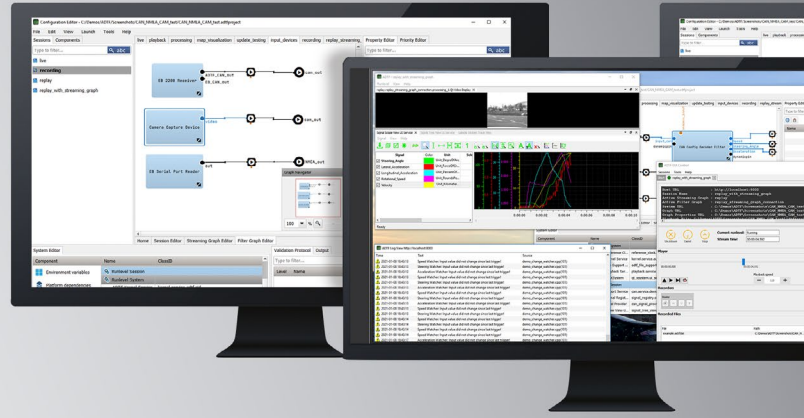
- Includes end-to-end validation tools such as the EB Assist ADF software suite for driving scene recording, replaying data and managing workflow of HiL stations
- High-precision and time synced data logging using high-performance CPUs
- RAM configurable and compatible with CAN, FlexRay, Ethernet, Video, GPS or Audio using proven-in-use hardware and software products

Benefits

- Save costs and time with efficient seamless test integration and validate ECU behavior in a customized simulated environment **under realistic conditions**
- Shorten time to market despite more complex vehicle network architectures
- Smoothly scale from one high-capacity solution to HiL server farms of 200+ test stations
- Reinject sensor data into ECUs to simulate functions and measure KPIs

EB Assist ADF3

Flexible and extendable set of modules for various needs and use cases



In EB Assist, ADF3 and its toolboxes are designed for distributed systems and multiple parallel recordings. This helps you set up complex test scenarios in relieving heavily loaded systems.

Features:

Capture and Replay

- Capture and synchronize data from multiple sensor sources

Develop

- Write your own code, test, debug and visualize outcome with SDK
- C++ API allows unlimited extensions

Test and Validate

- Set up specific triggers and schedules using high-precision timestamping

Benefits:

- Capture, visualize, validate and test in one framework, avoiding use of multiple platforms
- Experience intuitive and improved data handling that supports a wide range of applications and use cases
- Cooperate with external project teams across the globe
- Distribute workload to multiple computers and optimize performance of each
- Distribute records to capture high amount of sensor and bus data at once
- Save time by simplifying complexity
- Receive extensive support and training

EB Assist ADF3 is supported by a consortium of premium OEMs and used by more than 50 automotive companies.

EB Assist Device Toolbox

- Supports automotive buses (CAN, CANFD, Flexray, Ethernet)
- Device support for Vector® Driver Library
- Webcam support
- Signal processing and visualization support

EB Assist Standard Toolbox

Enhanced with partner solutions

- Includes Kvaser® CAN Device connection

EB Assist Display Toolbox

Offers various visualization modules:

- 3D scene graph display
- 2D display
- Signal view plugins
- Additional demo plugins (object lists, point cloud, etc.)

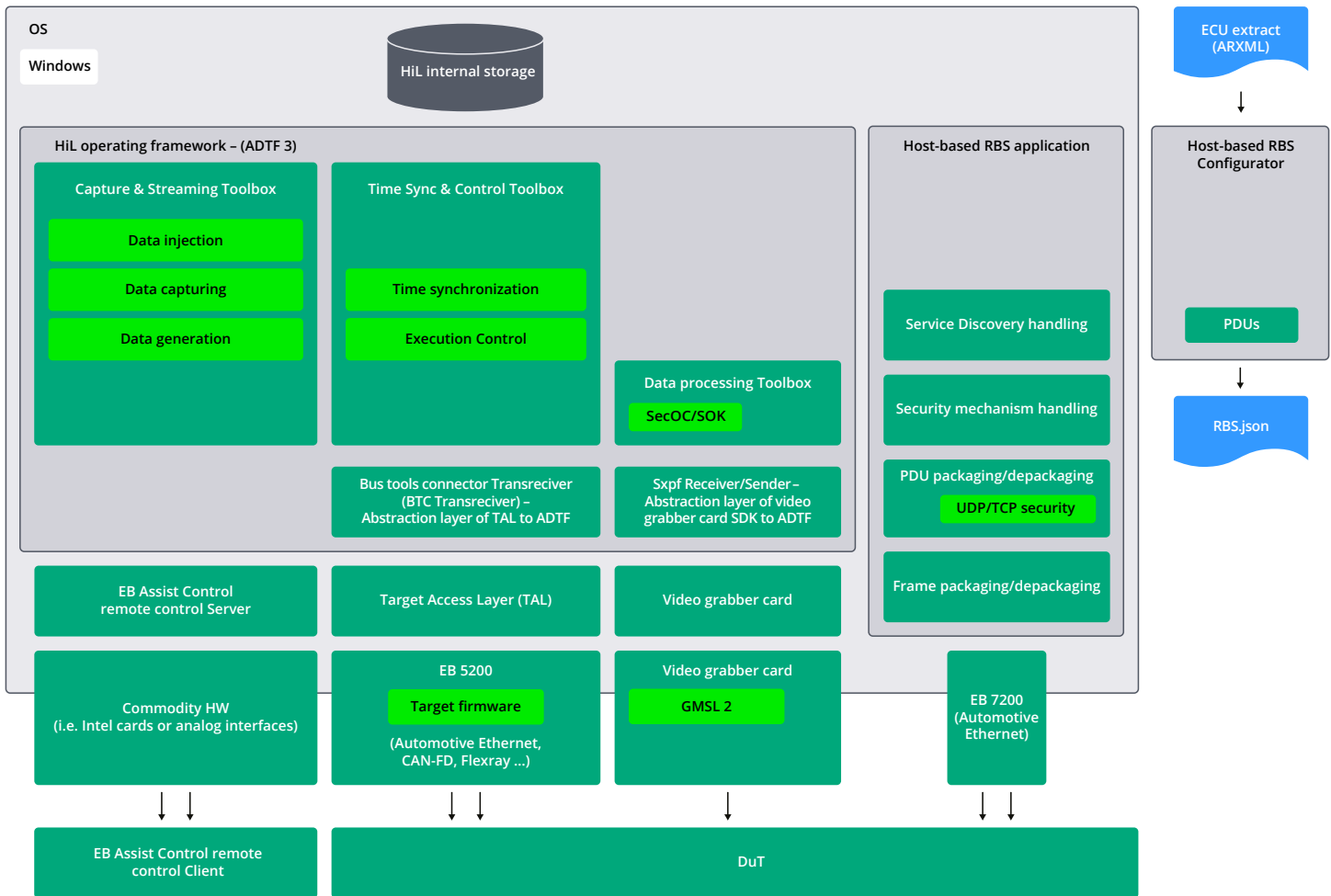
EB Assist Calibration Toolbox

Supports XCP communication with an ECU via multiple filters for communication via CAN, FlexRay or Ethernet

- XCP Master Filter
- XCP Decode Filter
- XCP Encode Filter
- XCP Emulator Filter
- XCP On CAN Filter
- XCP On CAN FD Filter
- XCP On FlexRay Filter
- XCP On Ethernet Transmitter
- XCP On Ethernet Receiver

EB Assist solutions

HiL solution architecture



Out of the box solution with reusable components

Reuse your already existing logger or HiL system while embedding a customized solution from Elektrobit.

Validate small to complex server ECUs (such as HPCs of newest ADAS vehicle architecture) with high precision time-triggered replay approach combined with a flexible software framework.



Toolboxes are all included and free of additional charge

sales@elektrobit.com