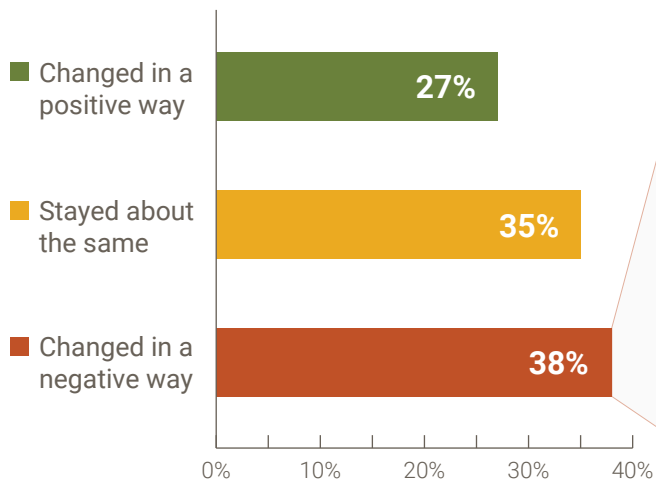


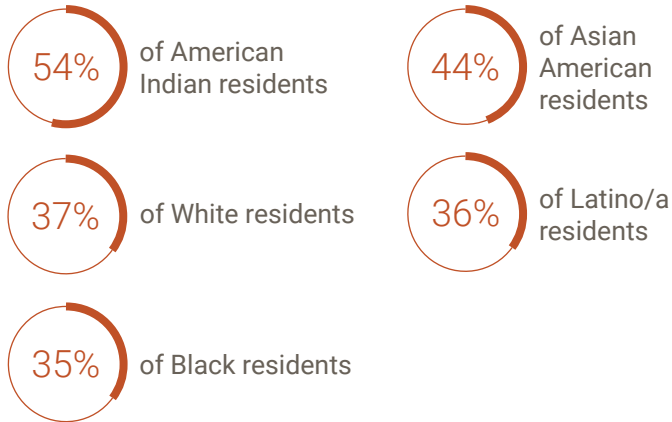


## East Metro Residents Feel the Impact of COVID-19 in Different Ways

As a result of the COVID-19 pandemic, has your life...



Percentages of residents who reported their lives had changed **negatively** due to the COVID-19 pandemic:



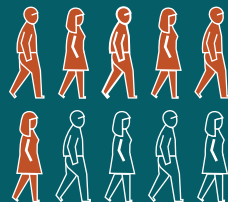
Residents reported the most significant impacts in:

- Education,
- Health, and
- the Economy



## The Impact of Community in the East Metro

Year after year, the East Metro Pulse shows that community connection is important to a majority of residents.



# East Metro Residents Do Not Experience Impacts Equally

46% of parents were worried that the COVID-19 pandemic would affect their children and their **learning**

COMPARED TO:

83% of residents who speak only a non-English language at home

70% of residents with a high school diploma or GED

71% of residents believe the **health** impacts of the COVID-19 pandemic to be significant

COMPARED TO:

92% of residents who speak English and another language at home

91% of American Indian residents

29% of residents worried about the impacts of the COVID-19 pandemic on their **economic** wellbeing

COMPARED TO:

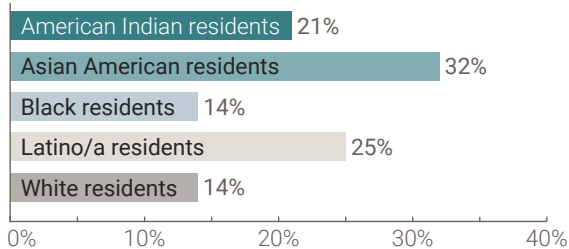
66% of residents who exclusively speak a language other than English

61% of residents with less than a high school diploma

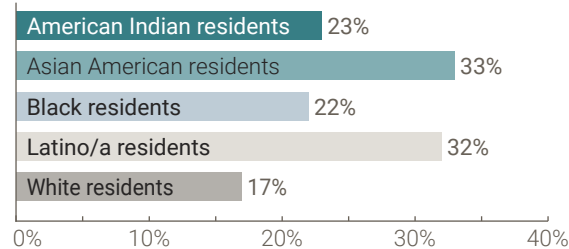


What are the main areas of your life where the COVID-19 pandemic has had the greatest impact?

## Education



## Health



## Economy

