



# DELAWARE INDIAN NEWS

THE OFFICIAL PUBLICATION OF THE DELAWARE TRIBE OF INDIANS

Lēnapé Pampil

January 2014 • Volume 37, Issue No. 1

## Message from the Chief

Chief Paula Pechonick

In a look back at 2013, the list of accomplishments and completed projects is extensive with focus in many areas. My first draft of my article was 10 times longer than any previous article. If now I seem brief in places, it didn't start that way.

I thank the Tribal Council for their diligent work. Without everyone's efforts, we would not be as far as we are. I thank our staff for they provide services and service to our people on a daily basis.

Here are some of the highlights.

**Enrollment Growth 2013!** New enrollees up by 23% over 2012. Increase by 26% of 18 and under enrollees but out of 10,698 members, only 949 are 18 and under. You can make a difference in the Tribe by making sure your younger relatives get enrolled by contacting the Enrollment Office today.

A personal goal is to reduce the list of the missing Delawareans. In 2013 we have reduced

the list by 10% but there are still over 2000 missing. Please check the lost list on our tribal web site at [www.delawaretribe.org](http://www.delawaretribe.org). You may know some of the people on the list who need to update their contact information. We want to make sure that we can communicate with all of our people during these exciting times for the tribe.

**Job Creation!** Both in Tribal Operations and business entities such as DFMS. We anticipate job creation to continue to rise as we expand our programs to provide the kinds of services we envision, grow Tribal businesses, and continue progress.

**Jobs Growth!** Employee Statistics: 72% of employees hired between November 2012 and November 2013 are Delaware. Of the 11 employees hired prior to Nov 2010, three are Delaware, so that means that 58% of all employees are tribal members. Nearly 75% of our employees have benefits.

**Infrastructure and Staff Development!** The Social Services and Infrastructure ICDBG (Indian Community Development Building Grant) projects finished in early 2013, increasing space for programs, expansion of the Community Center in the Elder Nutrition Kitchen, lengthening the road, increasing the retention pond's capacity, providing tornado shelters, increasing data infrastructure, and more. Personalized bricks were offered to Tribal members and many families are represented in the front of the new building.

In early 2013, DEA, the economic arm of the Tribe, had a significant reduction in overhead. The scope of the holding company was refocused to follow through with projects in process. A lawsuit filed in 2012 against DEA and the Tribe (but not served) was negotiated and settled. The settlement agreement kept costs down and out of court.

Interested in DEA? We're looking for you! See page 19.

**DFMS!** Delaware Facilities Management Solutions is a wholly-owned Tribal entity. Currently, the Tribe (including the Housing Program) is the largest contract for DFMS. However, pre-DFMS, the Tribe contracted out the same services or maintained associated overhead costs. Now, the Tribe is able to keep dollars within the Tribal economy and provide jobs. I am confident in the skills of the management of DFMS as well as the workers and look forward to a bright future with this business.

The Tribe worked on a strategic partnership with the Confeder-



The new Delaware Tribe Memorial Garden in Bartlesville, OK.

ated Salish and Kootenai Tribes (S&K) to form an informal mentor/protégé relationship with regard to economic development.

The 8a application for DFMS (Delaware Facilities Management Solutions) is pending final reviews and considerations, which will allow us to bid on federal government set-aside contracts.

In May, the Tribe proposed to open a Memorial Garden by the pond. The area is intended to be a beautiful place to reflect on our loved ones and ancestors. Several employees took up the charge of launching the garden. We hope to have more volunteers this coming spring to join in the fun. If you have an addition to the garden to celebrate your Tribal loved one, you are welcome to come to the Tribe or let the office know how they can help you. I hope there will be traditional gardens as well as community gardens.

**The Lodges!** After studying the Tribe's waiting list for tribal housing, more single-bedroom dwellings were in greatest demand. The Tribe purchased a

12-unit garden-style complex in Bartlesville, OK, formerly known as the Irene Apartments. After a nearly complete renovation, the complex has been remodeled, repaired, is now up to code and renamed the Lodges.

Our gift shop is finally (once again) a reality, and it will soon be online as well. We hoped that there would be a space opening up on the Bartlesville campus for a museum, but this has not happened yet. But a museum is on our wish list for 2014! Our Archives program continues to gather more and more material, thanks to the generosity of our tribal members.

I wish I had room here to highlight each program of the Tribe. Please check out our web site for more information.

A highlight for me in 2013 was the pleasure to host the female Chiefs/Governor/Presidents of Oklahoma for a gathering in Bartlesville. The visiting tribal leaders attended a presentation

*continued on page 2*

Message from the Chief.....1	Delaware Days, 2013.....10
Delaware Tribe Reaching for the Stars.....3	Thank You!, by Bruce Martin.....10
2014: A Year of Tribal Sovereignty.....3	2013 in Pictures.....11
As I See It.....4	Obituaries.....14
Migration to Kansas.....4	Minutes of the Tribal Council.....16
2014 Trust Board Budget.....5	Report from the Education Committee.....17
Trust Board Election Results.....5	Minutes of the Trust Board.....18
Voting in November 2014 Election.....5	Interested in Joining the New DEA?.....19
LIHEAP Applications.....6	Oklahoma Artists Honored.....20
Housing Program.....6	Mike Pace (Xinkwilēnu) Returns to Germany.....21
Environmental Program.....6	Happy New Year 2014, by Chet Brooks.....21
Enrollment Program.....7	Wellness Committee Project.....21
Wellness Center.....7	Lenape Language Preservation Project.....22
Child Support Services.....8	Historic Preservation Office.....23
Updating the Veterans Wall of Honor.....8	Tribal Archives.....23
A New Normal Way of Life.....9	The Frank G. Speck Collection.....24

*continued from page 1*

held in conjunction with childcare and returned to tour the Tribal complex, share ideas and discussion.

**Expansion Progress!** A major announcement of 2013 was the purchase of nearly 100 acres near Lawrence, KS. At this time, the Tribe continues to prepare paperwork to submit a non-gaming Fee-to-Trust application for the property located within the Tribe's last reservation. The property originally belonged to Captain Sarcoxie. The second owners were the Pine Family who has had the property since the 1860s. Thus the Tribe is first and third owners of the land. The acreage includes a home which will be used as the Tribe's first offices in the Lawrence area. We spent much due diligence in considering the property, which is high quality farmland, close to the river with abundant topsoil. The area is some of the best farmland in the nation as well as being a large contiguous piece of property which has a large house, an irrigation unit, and several outbuildings. The Tribe is currently earning income from the property by leasing the property to a sod farmer for 18 months. Property value for current use (agricultural) is estimated at a little over 2 million dollars.

We met with now-former Assistant Secretary of the Department of Interior Larry Echohawk in 2012. This year, we met with Assistant Kevin Washburn as well as Mike Black, Director, BIA and Mike Smith Deputy Director,

BIA, to further discuss the Tribe's plans in Kansas. Additional federal meetings include meeting with the Regional Directors of the BIA and IHS. Requests for Kansas Service areas are being prepared to present to both agencies. With each meeting of federal officials, the conclusions are that the Tribe has a "unique" situation, is charting unprecedented territory, has a justified reason for seeking to exercise sovereignty outside of the Cherokee Nation, and should be encouraged to keep moving forward.

Another highlight of 2013 was meeting with Governor Sam Brownback of Kansas. We had been meeting with Governor's Liaison Chris Howell since October 2012. In August 2013, at the meeting with the Governor, he welcomed the Tribe's efforts in Kansas and told us that he wishes all the Tribes displaced from Kansas would move back to Kansas.

Since August, the Tribe has met with Governor's cabinet members from Kansas and community and county officials to discuss concepts of the Tribe in the state of Kansas and Kansas communities.

While taking care of business at home, at the federal level, and at the state level, we also gained support of many other tribes. We have focused on intertribal relations in Oklahoma and across the nation. The former intertribal organization of Oklahoma, Texas and Kansas restructured into the United Indian Nations of Oklahoma, Kansas and Texas (UINOKT) and representatives from the Tribe attended nearly all of the meetings which were hosted by various tribes in Oklahoma. UINOKT passed a resolution supporting the Tribe's expansion into Kansas.

The National Congress of American Indians held their 70th annual conference in Tulsa, OK this year. We were active in the NCAI planning sessions held monthly to prepare for the event. With the conference in Tulsa, we

were able to have a good representation and take several vans to the "Cultural Night," an NCAI tradition. Many tribes including the Cherokees stood with us as we told our story.

We have gained ground in our government-to-government relationship with the Cherokees. The administration has been working with us through the year to resolve some of the issues. They have released the hold on our ATG (Aid to Tribal Governments) money (with the urging of the BIA) and are in the process of releasing our housing money! We are eagerly continuing discussions for further modification of the MOA (Memorandum of Agreement) that we have with the Cherokee Nation,

The Cherokee Administration has been most supportive of our efforts in Kansas. We applied to continue our elder nutrition program, a three-year grant. We proposed a second site in Caney, Kansas. The Cherokee Nation joined us in sending out a needs survey to area elders.

Our Kansas expansion has been the topic of general public discussions recently, even though the resolution to expand our service area into Kansas was passed nearly 18 months ago. Since the passage of that resolution we have all been hard at work to make that vision a reality. However, it is a concern of some tribal members as to whether the Tribe was ready to embark on the Kansas journey.

Our organizational infrastructure is the foundation for growth, progress, and expansion. In addition to physical infrastructure renovations and upgrades, the Council undertook major efforts to work with the staff as individual employees as well as within the departments and programs. The Child Support Services program has completed its first year as the first federal agency to recognize the Tribe's Kansas jurisdiction.

In 36 counties in southeastern Kansas, there are 50,000 unserved Native Americans without

access to IHS, Section 638 programs, and other Native American-based federal programs. We spent a great amount of effort on the Tribe's infrastructure and staff development in the last year. With the capacity being demonstrated by our departments, the federal agencies are talking to the program directors about possibilities in Kansas. Requests for service area for IHS and Section 638 are being studied and written.

EPA director Jimmie Johnson organized and facilitated a strategic planning session with the Department of Energy and the DOE has indicated they are excited to work with us. This is just one example. The Tribe has an opportunity to administer programs to all Natives, help our people, take land into trust, and be sovereign. We carefully chose the 36 counties so that they would not overlap another tribe's jurisdiction.

We are in uncharted territory, but we continue to move forward.

**Staff Development!** We have been hard at work streamlining our current procedures and preparing for the inevitable growth that we hope to undertake in the next few years.

Our areas of focus included internal communications. Our directors had specialized training in team building, problem solving, and using software on our work computers to improve our internal communications. Another tool for internal communications is the newly-created and implemented employee intranet. The intranet allows our staff to have all forms and information for each department available to them with only a keystroke. (Personal and confidential information will still be safeguarded in password protected files and with limited access.) We are hopeful that the intranet availability to staff will result in increased efficiency and assistance to tribal members.

Reporting – In order to aid in transparency, as a result of the reporting project each department

uses a consistently formatted template for monthly reports to the Tribal Council. This consistent collection of information will allow us to produce an annual report for our people.

Writing Legislation – Directors were trained in researching and writing basic (and in a few cases not so basic) legislation related to Tribal programs. By training our staff, we can reduce costs paid to consultants or attorneys every time we need this kind of work because we now have staff that not only can do this work but do it well.

Tribal Codes – Over the years, many resolutions have been passed by the various administrations. We are working to update old resolutions that refer to antiquated systems and processes when we need to be moving into the future. One example of this is the work that our judges are doing on updating the judicial code. This law, found in our code book, has not been updated since 1986. Indian Country and Indian Law have changed tremendously since that time. I would like to thank our judiciary for their hard work in updating the code.

The Code Commission that we put together last year has also been doing some work in reviewing all past resolutions to make sure if they should be included in the code book that they are putting there so that our laws will be available to not only the judges but also to the Delaware people.

We are working to make all of our forms electronic as well as to improve the format and content of those forms for public use. Each form will now have a check list for the tribal member to ensure that applications are complete, while also able to prompt other departments/programs to contact the tribal member for additional services for which they qualify. Finally we have worked to restructure our weekly director meetings and monthly all-employee meetings to reduce the

## To Contact Tribal Leaders and Staff

There is a tribal council, trust board, tribal court, and staff directory on the tribal web site at:

[www.delawaretribe.org](http://www.delawaretribe.org)

You may also email the tribe at [tribe@delawaretribe.org](mailto:tribe@delawaretribe.org).

Please understand that your input is important and is valued.

*continued on page 3*

*continued from page 2*

time that workers are away from their work stations as well as to increase the participation of our employees in the problem solving process for each department.

**Enrollment Department** – In addition to reducing the number of Delaware on the lost list I am happy to announce that we have added another position in the enrollment department, added another license to our Progeny software, and provided proper training in the use of the software. This has eliminated the huge backlog we have been experiencing in that department for years. We have also secured all of your enrollment files to a limited access area so all personal information kept in those files is accessible to Enrollment staff ONLY.

**Job Descriptions** – I am happy to announce that all job descriptions for our current positions have now been updated (with the exception of three positions in Caney). We have also identified a list of positions that we will need to fill over the next 18 months. We no longer have one job description to cover one person do-

ing three jobs. They have all been separated so that as we have funds through these new programs and we can hire staff to perform one job we will be ready with approved job descriptions.

**Policies and Procedures** – We are in the process of making sure that each department has its own policies and procedures as well as what we are calling “Administrative Services” which contains the Tribal Operations Manager, the Assistant Tribal Operations Manager, the Administrative Assistant to the Chief, and the Receptionist.

**H.R. Policies and Procedures** – We are beginning a project now to update the overall Human Resources Policies and Procedures as well as to establish a new hire orientation process.

I ask for your support in 2014 as we move forward in not only Kansas but as we continue to grow and support our programs in Oklahoma. Let us hear your voice!

Lapich Knewel  
Chief Pechonick ■

## Delaware Tribe Reaching for the Stars

Verna Crawford  
Tribal Council and Trust Board Secretary

I wish everyone Happy Holidays and a great New Year.

What is in the future for the Delaware Tribe? The stars and everything in between! The goals I see include, but are not limited to: health care; education programs that include bigger scholarships, schools where the Delaware language is taught, career training, assistance for students from pre-school to elders, social programs, economic development, employment, a fully functioning Court system, and much, much more.

2013 is now behind us and we are eagerly looking ahead at the New Year. Last year we moved ahead with the expansion back into Kansas.

The Tribal Council passed a resolution to request from the BIA, and other federal agencies, a jurisdictional service area covering 36 counties in Kansas. Some think that is too large an area, that no agency will grant us that area. If we don't take the bold step and ask, we will never

KNOW. The Tribe already has a Child Support Services planning grant covering these counties.

We have developed a communication plan so that the staff and elected officials have the same information to answer questions involving our plans. We have been developing better policies and procedures for all existing departments and others we know will be needed. Our judges have been working to improve the Tribe's judicial system. A video was produced telling the story of our people and why we must return to Kansas. This has all been done with the assistance of Gray and Gray Consultants. The Grays are as dedicated as we are to help return the Delaware Tribe to the place equal to all other federally-recognized tribes.

Land was purchased in Lawrence, Kansas that was previously owned by Delaware people. It was purchased from the same family that bought it at the time of our move to Oklahoma. It is

excellent farmland; in fact it has been a sod farm. The house located on the land may have many uses. It could be used as offices, a school, and a health facility or in any number of other ways, and that is exciting. The land was found and the purchase facilitated with the assistance of former Chief Dee Ketchum.

The revised Trust Document was passed with a wide majority. The Document eliminated the Economic Development and Land Management Committees and replaced them with the Elders and Veterans Committees. These committees already existed, but without any funding.

All of these activities have been to move from under the cloak of the Cherokee. The Council must work in unison to accomplish our goals.

The future I see for the Delaware Tribe is glorious. We will take our place as the “Grandfathers” among the Tribes. Again, we will be known as the peacekeepers and givers of good advice as our ancestors were.

Wanishi. ■

## 2014: A Year of Tribal Sovereignty

*A Message from Tribal Manager Curtis Zunigha*

This issue of the DIN brings news of great accomplishment in 2013. We have added to our Bartlesville community with the construction of a Social Services building and the purchase and remodel of a 12-unit apartment complex we've named The Lodges. We also remodeled our kitchen and dining hall for the Elder Nutrition Program to better serve a growing group of active seniors. We've given a record number of higher education scholarships, added energy efficient improvements to homes, provided assistance in paying for utilities, medical expenses, and funerals. New laws have declared environmental protection of our

lands, sovereignty over our culture, and protection of the welfare of our Indian children and families.

Looking ahead at 2014 we continue to pursue unpaid claims settlements, develop business projects, and expand our visibility in the community of tribal nations. Our tribe's acquisition of prime real estate in Lawrence, Kansas has been a major step in the move away from Cherokee Nation control of the tribe's federal funds. The political posture of the Cherokee Nation has become much more cooperative and positive toward our tribe. The development of our government infrastructure is positioning our tribe to directly

contract with the Bureau of Indian Affairs, Indian Health Service, HUD Office of Native American Housing Programs, and Department of Health & Human Services. Federal programs are the centerpiece of tribal revenues and our potential growth with government contracts is significant.

As we start 2014 I want to recognize our administrative staff whose dedicated service helped achieve last year's successes. This year our Child Support Services program will become operational and based in our Caney, Kansas headquarters building. Our tribal court and election polling site are also housed in Caney. These essential government services are



but the beginning of a robust tribal expansion into Kansas. 2014 is going to be a great year for Dela-

ware Tribal sovereignty and we welcome your participation and support in this endeavor. ■

## As I See It

*Dee Ketchum*

In July 2013 the Delaware Tribe closed a land purchase contract for 92 acres located in North Lawrence across the road from the airport on Highway 24-40 and adjacent to I-70 turnpike. It is a spectacular location.

The property purchased by the tribal council has historical significance to the Delaware Tribe. It is in our former reservation where we once owned over two million acres. The specific property was the allotments given to Chief Sarcoxie and Captain Fall-Leaf and is close to the location of the Kansas Big House Church, the traditional and spiritual center. The soil is Class 1 and 2, the richest in the world.

The tribal council has made an investment in the Tribe's future. Funding for the Kansas land came from Proceeds of Sales funds and the purchase is paid in full. In addition to the 92 acres, we now have a 4,300 square foot house for offices, a commercial irrigation system, and the property is making a monthly income for the tribe until we complete the establishment of a land base via the Bureau of Indian Affairs.

Properties that were considered in other areas of the former reservation that were comparable to North Lawrence were all priced similarly or much higher. But none had the sentimental history that the North Lawrence property has, being the last portion of the Delaware Reservation.

First and foremost, remember, the Tribal Council purchased the land in our former reservation because some 150 years ago the federal government moved the Delaware to Indian Territory onto lands belonging to another Indian nation. In the last 50 years our tribe has been plagued with the loss of federal recognition twice and has ended up without jurisdiction. The only recourse to exercise our tribal rights is to migrate back to our former reservation and establish the much needed jurisdiction. One has to keep in mind that the Tribe has no jurisdiction in Oklahoma and cannot put land in trust in Oklahoma in the 14 counties in the Cherokee Nation, which includes Washington County.

For some of the naysayers who are making comments, but do not have the facts:

- Did the tribal council have the authority to purchase the land in Kansas? Yes. Article

5, The Powers of the Tribal Council, of the Delaware Constitution gives the Tribal Council this authority.

- Where did the funding come from that paid for the Kansas property and did the Tribe act within its authority? Yes. Under Federal regulations, 63 FR 476, Section 20, it is stated that the proceeds of housing sales can be used for housing activities, community facilities, or economic development.
- Did the Tribal Council have the property appraised prior to the purchase? No. It was not necessary. However, since then we have done an appraisal. The reason the Tribe did not get the appraisal before closing was to prevent the property price from escalating when the word got out a tribe was making the purchase. The Tribe formed LTI, LLC as the purchaser.
- Does the property have environmental issues? No. It transferred from the Delaware to the Pine family in approximately 1868, and has always been farm land—no oil wells, no industry, and no pollution of this kind. An en-

vironmental study was done with no "red flags." It is in the 500-year flood plain. (By comparison, much of Dewey and Bartlesville is in the 100-year flood plain.)

When I served as tribal treasurer and facilitated the purchase of our 80-acre tribal headquarter and campus in Bartlesville in 1997-98, it was never appraised. The former headquarters building on Virginia Avenue, which I arranged to purchase in 1998-99 for \$1 from the City of Bartlesville, was not appraised. (It was sold for \$600,000.) Ask the naysayers how those two purchases turned out.

Hopefully, you will not listen to half-truths and innuendos of some individuals who do not know the facts. Does all the "talk" ring with political overtones?

As I see it, the Tribe is at a critical crossroads because of the Memorandum of Understanding with the Cherokee Nation. We do not have a jurisdictional land base, but hope to establish it in the state of Kansas. What also concerns me is: if we do not do something, will the Great Delaware Tribe even be recognizable in 25, 50 or 150 years from now? ■

in 2013 that the Tribe should "claim" a service area of one-third of the counties in Kansas. As time has passed, it is my opinion that is getting the cart before the horse. Before we try to establish a vast service area, we need to establish, with the aid of the BIA, a land base, jurisdictional area, and service area in our former reservation in Douglas, Wyandotte, and Leavenworth Counties, north of the Kaw River.

Since we own land in the former reservation, the BIA has a basis (if they need to see the seriousness of our desires) to make a determination that we are the

only Tribe who has a natural claim in that area, just as tribes in Oklahoma who reclaimed their former Indian Territory reservations 30-40 years after Oklahoma statehood. Prior to Kansas statehood, the tribes were relocated to Indian Territory and assigned land. Unfortunately for the Delaware, the U. S. Government placed us on Cherokee land. Of course, we believed we purchased it, but that's another story.

The tribes in Oklahoma were restored to their former reservations, creating in place of reservations, their land base, jurisdictional area, and service area. As

### Delaware Indian News

The *Delaware Indian News* is the official publication of the Delaware Tribe of Indians. It is published quarterly by the Delaware Tribe of Indians and is mailed free to members.

Subscriptions to non-tribal members are available at \$20 per year. To order a subscription, contact 918-337-6590 or [din@delawaretribe.org](mailto:din@delawaretribe.org).

We invite contributions, but reserve the right to limit printing based upon available space.

The deadline for articles, letters, ads and calendar of events is March 15, 2014 for the April 2014 issue. Submissions may be mailed, faxed or hand delivered to the tribal office or emailed to [din@delawaretribe.org](mailto:din@delawaretribe.org).

Paid advertisements are available; for rates, please contact the editor at the address below.

Published January 2014. Reprint permission is granted with credit to the *Delaware Indian News*, unless otherwise noted.

The mission of the *DIN* is to serve, empower and inform the Lenape people, while adhering to the policy of unbiased reporting in an ethical and professional manner.

Editor: Gregory Brown  
[gbrown@delawaretribe.org](mailto:gbrown@delawaretribe.org)  
918-337-6529 ■

## Migration to Kansas

*Annette Ketchum, Councilwoman*

During 2013 the Tribe purchased land in our former reservation in Kansas. It is a start toward migrating back to the land that our ancestors believed would be our final home. It was not to be, and after 147 years in Indian Territory/Oklahoma on top of another tribe's 14-county land base, we have no choice except to go back to Kansas while continuing services to our members in the Bartlesville area.

The BIA has many laws, codes, precepts, and handbooks

it uses to determine what a tribe may and may not do. We are allowed to be located in more than one state and many tribes overlap state boundaries. We want to determine our destiny, but within the Cherokee Nation, we have limits. The Cherokee Nation is not hindering the Tribe from migrating back to Kansas, actually it has said on several occasions that it supports us and will help us.

Now we must proceed with a plan. There was a plan early

time went by, the BIA supported self-determination, self-governance, autonomy, and rights for each tribe to put land in trust that it purchased in its jurisdiction area (their former reservations).

That's all I ask for the Delaware Tribe in its former reservation in Kansas.

How important is this? It is the most important first step to return to Kansas. ■

## 2014 Delaware Trust Board Budget

Verna Crawford, Trust Board Secretary

The Delaware Trust Board approved the 2014 budget in a special meeting held on Monday, December 16, 2013 in the Community Center. The budget is estimated based on investment income through June. After the December 2013 statements are received that interest through December will be added to the budget and dispersed to each Committee based on the percentages in the Revised Trust Document voted on and approved in the November election.

Committee	New Percentage	Amount
Reinvestment	10%	\$ 9,236.24
Cultural Preservation	10%	\$ 9,236.24
Community Services	30%	\$ 27,708.72
Education	25%	\$ 23,090.60
Tribal Operations	15%	\$ 13,854.36
Elders Committee	5%	\$ 4,618.12
Veterans Committee	5%	\$ 4,618.12
<b>Total</b>	<b>100%</b>	<b>\$ 92,362.40</b>

## Trust Board Election Results 2013

	In- Person	By Mail	Hand Tally	Total	Pct.
<b>TRUST BOARD CANDIDATES</b>					
<b>Larry Joe Brooks</b>	<b>15</b>	<b>493</b>	<b>25</b>	<b>533</b>	<b>20.2%</b>
Janifer K. Brown	7	280	16	303	11.5%
Patricia K. Donnell	21	268	14	303	11.5%
Bonnie J. Griffith	20	342	20	382	14.4%
Shelli S. Harris	2	142	7	151	5.7%
<b>Homer E. Scott, Jr.</b>	<b>16</b>	<b>373</b>	<b>16</b>	<b>405</b>	<b>15.3%</b>
Karla M. Vernon	5	128	5	138	5.2%
<b>Mary L. Watters</b>	<b>28</b>	<b>383</b>	<b>19</b>	<b>430</b>	<b>16.3%</b>

### 2014 TRUST BOARD BUDGET

<b>Yes</b>	<b>33</b>	<b>784</b>	<b>40</b>	<b>857</b>	<b>92.2%</b>
No	7	62	3	72	7.8%

### NEW TRUST PLAN

<b>Yes</b>	<b>25</b>	<b>708</b>	<b>40</b>	<b>773</b>	<b>83.3%</b>
No	14	134	7	155	16.7%

## Donations Gratefully Accepted

The Delaware Tribe of Indians has many departments and committees that provide services and assistance to Delaware Tribal members. Departments such as the Archives, Library, and Museum are always in need of financial assistance.

Any Delaware Tribal member or friend of the Delaware Tribe who would like to donate to support these worthwhile endeavors may send donations to the **Lenape Charitable Fund**. The Lenape Charitable Fund is a 501 C3 and all donations are tax deductible.

Please indicate where you would like your donation to go:

- Delaware Tribal Archives
- Delaware Tribal Library
- Delaware Tribal Museum
- Delaware Language Preservation Project
- Elders Committee
- Tribal Cemeteries Upkeep/Improvements
- Trust Community Services Committee
- Trust Cultural Preservation Committee
- Trust Education Committee:
  - all services
  - scholarships
  - other
- Veterans Committee
- Wellness Center
- Use funds where most needed.

Send donations to

**Lenape Charitable Fund**  
**170 NE Barbara**  
**Bartlesville, OK 74006-2746**

## Instructions for Voting in November 2014 Election!

On November 1, 2014 the election for Chief and three Tribal Council seats will be conducted. You may vote in person at the official polling sites or obtain an absentee ballot.

If you cannot vote in person, be sure to apply to get an absentee ballot for tribal elections. It's easy to do so; just fill out the form below and mail it in.

If you voted in the November 2013 election, you are already on the list and do not need to re-register. Likewise, once you have registered for an absentee ballot you will remain on the list until you fail to vote in three consecutive elections, after which you will need to re-register.

PLEASE NOTE: We need one form per voter. You may copy this form if you need multiple copies, or look for a downloadable form on the Enrollment page of the tribal web site.

### Absentee Ballot Request

#### Delaware Tribe of Indians

Date: \_\_\_\_\_ Delaware Registration #: \_\_\_\_\_

Full Name: \_\_\_\_\_  
 First Middle Last Maiden  
 (& previously married name(s) if any)

Address: \_\_\_\_\_

City State Zip

Telephone #: \_\_\_\_\_ Email: \_\_\_\_\_

Signature: \_\_\_\_\_

Birth Date: \_\_\_\_\_

Send form to:

**Delaware Tribe Election Board**  
**P.O. Box 1198**  
**Bartlesville, OK 74005**

Congratulations to Larry Joe Brooks, Mary Watters, and Homer Scott on their election to the Trust Board. The new Trust Board Master Plan and the proposed 2014 budget were also adopted.

Thanks to all Delaware tribal members who voted in the election!

A certified copy of the results of the election is on file at the Tribal Offices at 170 NE Barbara, Bartlesville, OK.

## Delaware Tribe Accepting LIHEAP Applications



This winter, the Delaware Tribe of Indians is providing funding through the Low Income Home Energy Assistance Program for eligible Delaware Tribal members.

LIHEAP is a federally funded program that is coordinated through the Delaware Tribe's Social Services Program and serves low-income households that need assistance paying their home energy bills. The program gives priority to those with the highest home energy needs, meaning low-income households with the highest energy burden or the presence of a vulnerable individual in the household, such as a young child, a disabled person, or a frail elder.

Income eligibility levels are based on income plus the number of persons residing in the home. For example, a household of two people cannot have a combined income totaling more than \$23,265 per year, and a household of four cannot

have a combined income of more than \$35,325 per year. For income guidelines, please contact the Delaware Tribe Social Services Program.

LIHEAP payments could possibly be provided by other area agencies; however, a household can only legally receive services through one agency.

To be eligible for assistance through the Delaware Tribe, a person must reside in the Tribal Service area of the Delaware Tribe, have a tribal enrollment card, show proof of income for the previous six months, and provide a copy of the utility bill with the tribal member's name listed on the bill. Payments will be made to the vendor in the recipient's name.

Applications will be accepted starting December 1, 2013 and go through March 30, 2014.

For more information, contact Lacey Harris, Delaware Tribe LIHEAP Coordinator, at 918-337-6521. ■

## Happy New Year from the Delaware Tribe Housing Program!

*DTHP Staff*

The Chelsea office has several low-rent one-bedroom units available at Delaware Acres. These units are now available to both elderly and non-elderly tenants. The Bartlesville office is accepting applications for our newly-remodeled one- and two-bedroom apartments at The Lodges. Low-rent family units are becoming available in Bartlesville, Chelsea and surrounding areas.

**We encourage low income elderly, disabled and small family Delaware tribal members to apply!**

Bartlesville office: 166 NE Barbara, Bartlesville, OK 74006 (918) 337-6572

Chelsea office: #6 North View Road, Chelsea, OK 74016 (918) 789-2525

Emergency Contacts:

Mike Marshall (918) 214-5560

Walter Dye (918) 214-5561

### Simple Winterization Tips

1. Dodge the drafts. Place a rolled bath towel under a drafty door.
2. Run ceiling fans in reverse. Circulate warm air pooled near the ceiling.
3. Mind that thermostat. Turn down your thermostat when you are not home.
4. Put on a sweater. Remember each degree on the thermostat costs money. ■



*The Delaware Tribe's Social Services Department sends new clothes to four Delaware children in foster care.*



*Cleaning up the Delaware Cemetery.*

## Delaware Tribe Environmental Program

*Jimmie Johnson, Environmental Program Director*

The Delaware Tribe Environmental Program would like to wish everyone a happy and prosperous New Year! I enjoyed participating and presenting my yearly report to the General Council in November, I would like to thank everyone that took the time to view my report and energy plan that was provided to the people present at the meeting.

In the week prior to Thanksgiving, it was brought to my attention that there had been a large quantity of trash and debris that was illegally dumped in front of the gate to the Delaware Cemetery on 1300 Road north of Dewey Oklahoma. During the week of Thanksgiving, tribal employees CeCe Biggoose, Lacey Harris, Michael Marshall, Bruce Martin, and myself went to the cemetery and loaded up the debris and trash and disposed of it properly at the Osage Landfill in Bartlesville. EPA

GAP funds were used to pay for the disposal of this waste. I encourage anyone who sees illegal dumping on ANY tribal lands to notify my office immediately so appropriate action can be taken.

In December, as part of the Delaware Tribe Solid Waste Management/Recycling project, new fencing was installed around the Recycling Dumpsters that were moved to the front of the Social Services Building. New fencing was also installed around the trash dumpsters located on the north side of the parking lot by the Community Center Building to replace old and rotting fencing that was there. This project also utilized EPA GAP funds.

As we go into the long winter months, I am going to utilize this time to attend much needed training in the area of Air Quality Monitoring, and Air Quality Grant Management. EPA GAP funds will be used to attend

these training sessions. Attending these classes will help to further develop the programs capacity to administer the additional grant that will be applied for this winter.

Also upcoming this winter and spring, DTEP is planning another E-Recycling drive to collect old, outdated, non-working electronic equipment to be recycled. Items that will be collected will include: televisions, computers, computer monitors, calculators, computer peripherals (keyboards, mouse, and cables). Watch the tribal web site ([www.delawaretribe.org](http://www.delawaretribe.org)) for an announcement from DTEP.

As always, if you have questions or comments please feel free to contact me at [jimmie-johnson@delawaretribe.org](mailto:jimmie-johnson@delawaretribe.org) or (918) 337-6590. ■



## News from the Enrollment Department

Leslie Fall-Leaf

**H**è! Kulamàsihèmo hàch? 2013 was a great year for the enrollment department. We moved our office to a new bigger location allowing us better access and more secure storage of our records. We have added another person and some new equipment as well which has sped up the processing time of your applications. We hope everyone is happy with what we hope is an improved level of service. Our current total enrollment is 10,717 Delawares, and as you can imagine that's a lot for the two of us to keep up with. But please keep sending us your address updates and enrollment and new photo id applications. Please know that we are doing our very best to get all those verified and processed in a timely manner.

All applications and forms may be obtained by either downloading them from the tribal web site or calling and requesting them from our office. Remember that the most effective way to ensure prompt and timely service is to make sure all requested documentation is included with your applications.

Please note that, due to the high cost of postage and the volume of applications, there is now a \$10 fee if you wish to have your documents returned to you through the mail. (For security reasons we only send those documents via certified mail with a return receipt.) Otherwise we will keep your documents in your permanent folder. There is no charge if you pick your documents up in person.

Also, please note that in order to assess the need for additional services, we are now gathering information on our tribal veterans and there is a reporting form for them as well. Mèli kēlēsh-mēsh!

Remember to send in your Change of Address forms, and to let us know if we may not have your current address. For those of you living in northeastern Oklahoma or eastern Kansas, it is especially important so that we can receive accurate funding for the services that we provide. ■

## Check Out the Tribal Web Site

Have you visited our Tribe's web site recently?

We have a brand-new look (right) that hopefully is much more modern and attractive. Major stories are shown in a slideshow at the top of the page; wait a few second for the next slide in the sequence. Click on the picture to get the full story. Below this are several "sections" (News and Events, Culture and Language, Our Community, and Tribal Newspaper) with an ever-growing variety of stories and announcements. We'll be adding a lot more to the Culture and Language section very soon.

Videos of major tribal events including Council and Trust Board meetings are linked through the Videos button, while "Latest News" and the News Ticker at the bottom provide the very latest links. Keep watching for the long-awaited online gift shop as well.

Don't forget to use the menu at the top of the page for contact info, services and programs (including downloadable application forms), an event calendar, job postings, and other information.

The site is updated regularly with the latest information. We hope you like it. If you have anything to post on the site, please contact us at [tribe@delawaretribe.org](mailto:tribe@delawaretribe.org).

To get to the web site, go to

[www.delawaretribe.org](http://www.delawaretribe.org)

## Wellness Center

Mickey Morrison

**T**he key to a successful workout is getting in a routine. We have Nautilus weight machines, three treadmills, stair-steppers, free weights and a new bike.

The therapy pool is now open and is now being used. But we need to get more members to use the pool. We had a large number of requests to reopen it; please take advantage of it.

Don't forget that massage therapy is now available. Tribal member and trained massage technician Cassandra Brown offers massages Monday through Wednesday, 8:00 am to 8:00 pm (by appointment only). Ms. Brown has over 10 years experience. Rates are \$45 per hour or \$25 for a half-hour. To arrange an appointment, call Cassandra Brown at 918-214-7853.

The Wellness Center is open Monday through Friday 8:00 am to 8:00 pm and Saturday 8:00 am until 1:00 pm. It is located at the Tribal Complex at 170 NE Barbara, Bartlesville, OK.



The is no fee for Delaware and Cherokee members. Bring in your tribal membership card or your CDIB card. Members of other tribes with their membership card pay just \$10 per month.

Non-Indians can work out for just \$20 per month. You can also use the Center as a walk-in for just \$2 per visit. Members can bring in a guest for free.

We are always open to suggestions on how to improve the Center. For more information call 918-337-6590.

*Please note: there is no medical staff on duty; so use the equipment at your own risk. ■*



## Thank You! Wanishi!

We the Staff of the Delaware Tribe would like to say Wanishita to Grayson's Donut Hole for all of the donuts they have provided over the past few months.



Grayson's Donut Hole  
809 S Madison Blvd  
Bartlesville, OK 74006  
(918) 331-9995

[www.facebook.com/Graysons-Donut-Hole](http://www.facebook.com/Graysons-Donut-Hole)

## Child Support Services “Strengthening The Circle”

Gina Roth

Happy New Year from the Child Support Services Team! We hope you and yours had a wonderful holiday season!

The Child Support Enforcement Department is starting the New Year off with a new name and newly renovated offices! We are changing our name to **Child Support Services**. We feel Child Support Services better represents the type of services we will be offering and is more in line with Chief Paula Pechonick’s philosophy and vision for the Tribe.

Our department recently moved into a newly renovated office. We are getting settled in and organized, as we prepare to go operational in October of 2014. DFMS was contracted to complete the renovations, and did a wonderful job. Our staff will be hosting an open house in the near future for tribal employees and members.

Under the leadership of Chief Pechonick, the Child Support Services Team is committed to “Strengthen the Circle” of native families and the tribe by providing additional social services to tribal members in our Oklahoma and Kansas service

areas. The Chief has made it a priority to provide social services to all tribal members who are currently not being served.

The Delaware Tribe is fortunate to have Tribal leaders who are committed to providing social services to all our citizens. Chief Pechonick, the Tribal Council, and Tribal Manager Curtis Zunigha have been very supportive in implementing the CSS program and have urged all departments to work together to broaden the umbrella of Social Services that are available to tribal members. We are currently working together by researching federal and state grants that will benefit our tribal members and their families.

Judge Marsha Harlan, of Indian Collaborative Consultants, is currently preparing the final draft of the Child Support Services Code. The codes will be presented to the Tribal Council for approval at the January 2014 Tribal Council meeting. Upon approval, Judge Harlan will begin drafting the civil code portion of the Child Support Code, as well as the policy and procedures for the CSS Program. With the support of our tribal

leaders and the hard work of CSS staff members, we remain on target in meeting the monthly objectives set out by the grant timeline and are on schedule to be operational October 2014.

The Delaware Tribe’s Child Support Services Department will differ from traditional state Title IV-D Child Support Enforcement programs, in that we are working to create and implement programs that are based on traditional Native American values to build strong healthy families.

Our CSS Program will provide assistance to our clients that better reflect our Native beliefs and traditions, by doing so, we will create stronger, healthier families in our Native American communities. The Child Support Services team members are currently researching alternative methods for non-custodial parents to pay child support, by using methods

for that will better strengthen the family unit.

Taking non-custodial parents into custody prevents the parent from working, paying support payments and parenting his or her child. Parents who are delinquent may be referred to court ordered incentive programs that include: job search assistance, education programs, financial counseling, parenting classes and fatherhood initiative programs, all based on Native American traditions and beliefs.

Chief Pechonick and the Tribal Council have worked diligently

to establish the Delaware Tribe of Indians as a sovereign nation by expanding and establishing a presence in the state of Kansas. The CSS department is honored to be the first program headquartered in the Caney, Kansas office. Providing essential services to all tribal members in both Oklahoma and Kansas is imperative for the Tribe to exercise sovereignty.

We are excited about the challenges 2014 presents to the Child Support Services Program and look forward to working with our tribal members. ■



Tribal offices in Caney, Kansas.

## Updating the Veterans Wall of Honor

Bonnie Jo Griffith

Vice-Chair, Elders Committee

At recent Elders Committee meetings, a decision was made to update the Veteran’s Honor Walls in the Community Center Dining Hall. I attended a General Council meeting and presented them with the desire of the Elders Committee to work on this project. The Council was supportive and asked what the plans are.

Here are our plans:

**Veterans Pictures:** Work to get more Delaware veterans pictures as there are many Delawares who have served our country that we do not have pictures of. Find what pictures we have that are not presently displayed.

**Framing:** Judge Charles Randall has offered his labor to rework the frames that are presently hanging on the walls. The Elders Committee will pay for all material needed. The names, branch, rank, and length of service will be displayed on each

photo in a new format. Plans are to ask for some financial support from the Veterans Committee.

**Placement on walls:** Curtis Zunigha stated that he would make sure to have Community Hall repainted prior to the replacement of the pictures on the walls.

**Deadline:** We are working to have all of the pictures in place in the new format by March 31, 2014.

**Project Management:** I have volunteered to oversee this project. Photos of the new displays will be put in the DIN upon completion.

**Contact Information:** Bonnie Jo Griffith, 918-331-3805, [bjgriffith@aol.com](mailto:bjgriffith@aol.com).

### How Can You Help?

Should you have pictures of yourself or any relative, please bring or send an 8 x 10-inch



photo of the veteran with name, branch of military, dates of service, and rank.

The photos can be brought to the office of Sandi Jamison, Executive Assistant to the Chief, at the Community Center in Bartlesville. You can also mail a photo with the information to **Sandi Jamison, 170 NE Barbara, Bartlesville, OK 74006** or email a scanned version to [sjamison@delawaretribe.org](mailto:sjamison@delawaretribe.org).

We do not need original photos; if you bring a photo to the Tribal Offices, Sandi will scan it and give you back the original.

If possible please try to bring your photos by March 1, 2014 so that we can meet the March 31 deadline. Wanishi. ■



Child Support Services staff: left to right, Administrative Assistant Kinzie Gomez, Director Gina Roth, Coordinator Rachel Overmyer.



## A New Normal Way of Life: A Cancer Survivor's Story

*Sadie Haff*

Born and raised in Washington State, I wasn't very knowledgeable about my Delaware heritage. My parents, John William Haff and Olive Vanscoy Haff, told me what they knew of it, but I always wanted to know more. It wasn't until the 1990's and the internet and a couple of family reunions in Oklahoma (the Haff reunion in 2001 and the Haff/Marker reunion in 2003) that I started to learn about my Delaware heritage and met many of my relatives, most descended from Israel and Mary Haff. Two relatives in particular, Gloria Marker Fortney and Helen Woodall Vire, taught me much about Delaware history and, in particular, our family history.

In October of 2005 I was able to travel to Oklahoma and visit with my Aunt Mary and Uncle Matt Haff in Ketchum and many other relatives. I also got to spend several days in Vinita with Gloria and Helen, getting better acquainted and researching family genealogy at the library in Bartlesville. One evening we had an opportunity to attend a potluck dinner at the Delaware Community Center. We had a wonderful meal and had a great time visiting with the tribal members there that night. Everyone was so friendly and welcoming.

One woman I met was Paula Pechonick, who measured my

feet for a pair of Delaware moccasins. I would later order a Delaware Tulip purse from her. I cherish both of these items still. A few years later Paula would become the Chief of the Delaware Tribe.

My life drastically changed in 2012, when I found myself at Lourdes Medical Center in Pasco, WA, recovering from surgery. When lab tests showed that I had cancer and would need chemotherapy, I started to think about what I would do when chemo caused my hair to fall out. I decided that I would wear kerchiefs. My doctor had told me that women often chose a theme for their kerchiefs or made some kind of statement with them. I decided that I would like them made from Native American prints to honor my Delaware Indian heritage. My great-grandmother Mary Haff and my grandfather William Haff were part of the removal of the Delaware tribe from the reservation in Kansas to land in Oklahoma following the Civil War.

When I had a difficult time getting mentally prepared for the journey ahead, my brother Stan would tell me that I was a tougher Delaware than that. A cousin in Oklahoma told me that our ancestors weren't moved from the East Coast to Ohio and then to Missouri, Kansas, and Oklahoma for me to "wimp out" now. She reminded me of the

difficult journey that my great-grandmother and five-year-old grandfather had made from the reservation in Kansas to north-eastern Oklahoma.

Friends and relatives had supplied me with material for kerchiefs and bandanas. I had also purchased Native American print material from a shop in Toppenish, WA that stocked material for the Yakama Indians for ribbon shirts and women's blouses. One of my friends stayed up late at night to sew kerchiefs for me, while during the day she was packing up her household for a move to Texas. I wore these kerchiefs through the spring and summer of 2012, and they somehow made it easier to deal with the hair situation. They also reminded me of the love and wonderful care I had received from my family, South Hills Church family, and friends. In August the temperature turned to over 100 degrees in the Tri-Cities, and I made the decision to stop wearing them. Because I loved the beautiful material they were made from, I told a friend that I was keeping them and using the material for some craft project in the future. Patti Rogers, a friend from my school days, told me that instead of using the material for crafts, she would make a quilt out of it. With the addition of border material and backing, a beautiful quilt took shape.



*Sadie Haff and Cindy Miller, a Tri-Cities Cancer Center staff member, showing the entire quilt.*



*Sadie Haff proudly holding her quilt which has a tag listing her DTI registration number, the date she finished chemo, and the date the quilt was made.*



*Tri-Cities Cancer Center  
7350 W. Deschutes Avenue  
Kennewick, WA  
509-783-9894  
www.tccancer.org*

The quilt is finished and my hair is back. The quilt will always remind me of the many wonderful health care providers, friends, family, and many other people who helped and supported me and gave me encouragement during my recovery. The quilt also

serves as a reminder of my Delaware heritage, and I am proud to be a member of the Delaware tribe. ■

## Delaware War Mothers Honor Veterans on November 8



*Delaware War Mothers fill Christmas "goodie bags" for our veterans. L-R, Barbara Wallace, Laura Maynor, Tonya Anna, Mary Watters, Pat Donnell, Cy Hughes, Chief Paula Pechonick.*



## Delaware Days, 2013

Annette Ketchum

The two-day annual fall celebration, Delaware Days, sponsored by the Cultural Preservation Committee, took place successfully on September 27 and 28. Many Delaware families were in attendance, along with friends of Delawares. Several Kansas Delawares attended at the invitation of Chief Paula Pechonick.

The well-attended dinners were held both Friday and Saturday evenings with more than enough food for everyone. John Sumpter and Joe Brooks cooked the meat provided by Cultural Preservation Committee funds.

On Friday evening, the songs were led by Dee Ketchum, with Ray Tompkins and Jack Tatum helping. We had several stomp dance leaders and shell shakers. Bruce Martin was MC and John Moore helped with the fire.

Saturday activities were hindered by morning and afternoon showers, which fortunately stopped.

The honorees this year were Kurt Anderson, Elder of the Year; and Homer Scott, Veteran of the Year. Blankets were placed on the honorees before the evening meal. The evening dances followed with Curtis Zunigha helping with the stomp dances and songs.

We hope to see you at next year's Delaware Days in late September!

Special thanks to Jimmy and Ruthie Hammon, who were in charge of the logistics that helped make this a success; to Jack and Elaine Fall Leaf Clinton for use of the grounds; and to Ford Griggs for use of his camp. The Cultural Preservation Committee is chaired by Chet Brooks, and members are Kurt Anderson, Joe Brooks, Jan Brown, Kenny Brown, Jimmy Hammon, Annette Ketchum, Bruce Martin, Anita Mathis, Paula Pechonick, Jim Rementer, Homer Scott, John Sumpter, Jack Tatum, and Bonnie Thaxton. ■



## Thank You!

Bruce Martin, Assistant Tribal Operations Manager

I would like to thank Bonnie Jo Griffith for organizing a Benefit for me after spending 11 days in the hospital and 4 weeks of recovery. The infection I had took me by surprise, but I wasn't surprised by the support of my friends and colleagues.

I would like to thank the staff at the Delaware Tribe of Indians for their concern, help and support during this time. I appreciate the vacation and sick leave time they donated to me.

It gave me a great sense of pride to be associated with and work with a great group of Lenapes and others on staff.

I would like to thank David Tyner and Jimmie Johnson and his family for helping out with the auction and entertainment. Also everyone who showed up for the Chili feed and auction.

It made me feel really good to see the support that was shown from not only my extended family but the community as well. It was good to see everyone there, it was good to be out of the house and see anyone for that matter. I do know a lot prayers were said for me and just wanted to let you know that they worked. Wanishi. ■



Bruce Martin, wife Lee Ann Martin, and grand-kids Katlee, Redstone, Maizee, and Seth Wopsock, all from Lawrence, KS.

## Exciting Year for the Delaware War Mothers

The Delaware War Mothers would like to extend their gratitude for all the support received from the tribal council, veterans, and tribal members. 2013 has been a rough year for membership but with the determination of its members 2014 should be even more exciting! Currently six different tribes are represented among the 25 members both locally and afar.

Hayden Griffith was elected princess for 2013 and 2014, and has represented the club well this year. She has participated in grand entries at powwows, NCAI in Tulsa, parades, veteran programs, and read to the Dewey first grade in recognition of the Oklahoma birthday celebration dressed in her regalia! This young lady is sure to do wonderful things in her lifetime and the members can't wait to see her represent the club again in 2014. Thank you Hayden for a job well done!

This year the War Mothers participated in the grand entry at the Operation Eagle Powwow, Delaware Powwow, and Oklahoma Indian Summer. On July 5 the club held a Veterans Recognition program after lunch at the Delaware Community Center. Each veteran was recognized and presented with a keychain. In September the club sponsored a Turtle Toss during Delaware Days for the children and plan on making this a yearly event. A table was provided by the tribe during General Council for a bake sale, silent auction and raffle which brought in some much-needed funds to help the



club support our veterans. On November 8 a Veterans Day program was held prior to lunch being served. Each veteran was recognized and presented with a veterans pin. Bucky Buck, veteran, and Bonnie Thaxton, mother of veteran, were the speakers for this year's program. The Disabled American Veterans (DAV) also participated in the program with a small ceremony for the POW's and MIA's.

Our mission is to represent and honor our military relatives, so if you are a grandmother, mother, daughter, granddaughter, sister or aunt of a veteran Native American OR non-native but want to represent an Indian veteran and would be interested in joining, please attend one of our monthly meetings the third Monday of each month at 5:00 pm in the Dining Hall at the Delaware Community Center. You may also contact Bess Marler at 918-440-1955, Tonya Anna at 918-533-8035 or email the club at [delawarewarmothers@yahoo.com](mailto:delawarewarmothers@yahoo.com).

Again, thank you to all who contributed to and supported the Delaware War Mothers over this past year and most of all, thank you to each and every veteran for your service. ■

## Want to Know About "Return to Kansas"?

See our video on YouTube!!

<https://www.youtube.com/watch?v=bY0nznd3pgA>

or search YouTube for "Return to Kansas Delaware"



# 2013 in Pictures

## Powwow and Stomp Dances



In addition to the 50th Annual Delaware Powwow in May, the Tribe sponsored or was involved in a number of stomp dances and other social gatherings in 2013. These included: "Battle of the Plains," January 26, 2013; Cheevers Coffey Memorial Gourd Dance, February 16, 2013; Coffeyville Community College "Rally in the Valley" Powwow, March 9, 2013; Chelsea Boys & Girls Club Stomp Dance, March 23, 2013; Oklahoma Indian Summer; Delaware Days; Powwow Hog Fry and Benefit, October 19, 2013; and Cheevers Coffey Memorial Gourd Dance, November 30, 2013.

## Elders Council



It's been a wonderful year for the Tribe's Elders Council. It is led by new officers (photo on lower right, left to right, Secretary Mary Randall, Vice-Chair Bonnie Jo Griffith, Chair Mary Watters, and Treasurer Janifer Brown). Monthly birthday and anniversary celebrations are held in the Forsyth Hall dining room, along with the annual Thanksgiving, Christmas, and other holiday meals. Outings include a recent trip to Woolaroc to see the Christmas lights, and more are planned for the coming year. Children from the Child Care Center came to visit on Halloween. The Elders Council also sponsors bingo, chair exercise, and other activities weekly. Big thanks are offered to the Elder Nutrition staff, under the supervision of Judy Dull, for all their support.

## Social Services Building Now Open



At long last the Tribe has a brand-new addition to its Bartlesville campus. The Social Services building at 166 Barbara Avenue (next to the Wellness Center and Tribal Offices) provides about 5,000 square feet of offices and storage space, along with a multi-media equipped conference room and space for displays. The building was opened on February 15, 2013 and houses: the Social Services Program, the Housing Program, the Environmental Program, and the Tribal Archives and Library/Museum.

## The Lodges



The Tribe's 12-unit apartment complex at 1026 S. Johnstone in Bartlesville was purchased in early 2013. Renovations included restored concrete walkways, electric circuit boxes, outdoor lighting, new paint, and a new sign.

## Our New Tribal Seal



After over 40 years, the Delaware Tribe has adopted a new version of the official tribal seal. The changes to the artwork and lettering were developed in collaboration with tribal community members. It was approved by a resolution of the Tribal Council on January 7, 2013.

## The New Indian Dollar Coin



\$1 coin produced earlier this year by the U. S. Mint. It's the first Indian dollar coin since the Sacajawea in 2000. The Delaware Tribe signed the first Indian treaty with the U.S. at Fort Pitt and approved by Congress on September 17, 1778.

## Visit with Confederated Salish and Kootenai Tribes



Members of the Delaware tribe of Indians traveled from Oklahoma to gain insight on the Confederated Salish and Kootenai tribal operations. (Photo by Alyssa Nenemay).

## Sculptor Chris Booth Visits Tribal Headquarters



Renowned New Zealand sculptor Chris Booth visited Tribal Headquarters in early July to discuss an upcoming commissioned sculpture for the Storm King Art Center in southern New York (<http://www.stormking.org/>).

## National Congress of American Indians



The Tribe was well represented at the 70th annual National Congress of American Indians in Tulsa, OK. We were active in the NCAI planning sessions and participated in "Cultural Night," an NCAI tradition.

## Meeting Kansas Leaders



Meeting with Kansas Governor Sam Brownback. L-R, Councilwoman Verna Crawford, Councilwoman Jenifer Pechonick, Chief Paula Pechonick, Governor Brownback, Assistant Chief Chet Brooks, Councilwoman Annette Ketchum.

### The “Century Chest”



The Tribe was an honored guest at the opening of the 100-year “Century Chest” time capsule at the First Lutheran Church in Oklahoma City on April 21. One of the items in the chest was this beaded garter.

### Strategic Energy Planning



A three-day planning seminar was sponsored by the Environmental Program September 4-6 in Bartlesville. Leaders were Lesley Kabotie (Kabotie Consulting, third from left), and Sandra Begay-Campbell (Sandia National Laboratory, third from right).

### Andersontown Powwow



Tribal members Jim Hammon and Michael Pace at the Andersontown Pow Wow and Art Market, Anderson, Indiana, September 7 and 8. Photos by Don Knight and James W. Brown.

### Learning About Delaware Culture



Tribal Archivist Anita Mathis teaches Lifelong Learning Class in Bartlesville. The six-week class was for the Osher Lifelong Learning Institute (OLLI), sponsored by the Oklahoma State University College of Education, and was entitled “History of the Delaware Tribe.” Approximately ten students, including Delaware tribal members, were introduced to various aspects of Delaware history by Anita and several guest speakers.

### Documentary Filming



Ball State students Andrew Bultemeier, Aaron Webster, Kayla Eiler, and Kathie Green set up video production gear for interviews last September. Students from Ball State University are working with the Delaware Tribe of Indians for a documentary about the Delaware’s time in Indiana. Photo by Chris Flook.

### Renovation of Elders Kitchen



The renovation of the Elders Kitchen, completed in May 2013, allows our wonderful staff to serve more and better meals to our tribal community.

### Female Heads of Government



Chief Pechonick hosted a gathering of Oklahoma female tribal chiefs and other heads of government, including Governor Fallon.

### Meetings in Washington DC



Tribal officials met with Assistant Secretary of the Department of Interior Kevin Washburn (above with Chief Pechonick) as well as Director Mike Black and Deputy Director Mike Smith.

## Obituaries

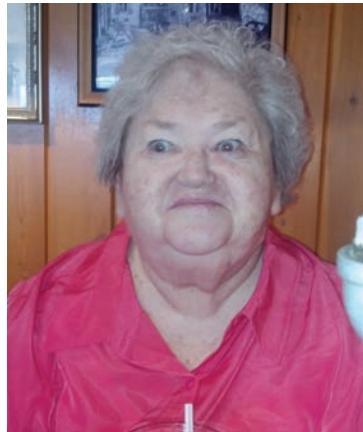


### Dana Renee' Arnold

September 27, 1962-  
November 7, 2013

Dana Renee' Arnold passed away Thursday, November 7, 2013 at Saint Francis Hospital in Tulsa. She was born September 27, 1962 in Fort Smith Arkansas to Earlene M. (Chandler) and Dan C. Arnold. She has lived in Nowata for the past nine years after moving from Gurnee, Illinois in 2004. She enjoyed swimming and boating and outdoor activities.

Memorial services were at 2:00 P.M., Tuesday, November 12, 2013 at Benjamin Funeral Service Chapel with Ben Killion officiating. Interment followed at Nowata Memorial Park Cemetery. Online condolences may be left at [www.honoringmemories.com](http://www.honoringmemories.com). Memorial's in Dana's name may be sent to McCracken Arnold Foundation for Nowata High School Senior's Scholarships in care of Mike Dye at Arvest Bank in Nowata. ■



### Sharon Kay Brooke

February 28, 1942-  
September 16, 2013

Sharon Kay Brooke passed away on September 16th, 2013 at age 71. She was born February 28, 1942 in Bartlesville, Oklahoma.

Sharon was born to Evelyn I. (McClure) Stratton (died 04-04-2012) and Emmitt L. Longbone (died 08-02-2011).

She is survived by one half-brother, Thomas O. Derozier; three children, Kirk, age 50, Rick, age 48, and Scott Brooke, age 46; five grandchildren, Richard Bigham, Shantel Wray, Nicklas Brooke, Austin Brooke, and Nash Brooke; and ten great grandchildren, Serenity Wray, Andrew Wray, Lillian Boerner, Benjamin Boerner, Addison Brooke, Cooper Brooke, Elijah Sims, Thomas Bigham, Emily Bigham, and Lilly Bigham.

Her service was held Saturday October 12, 2013 at The Healing Place, 3599 Bridge Brighton Colorado. ■



### Christopher Lee Brown

January 7, 1977-  
March 2, 2013

Christopher Lee Brown, 36, died Saturday, March 2, 2013 in Tulsa, Oklahoma. Chris was born January 7, 1977 in Claremore, Oklahoma. He was the son of Richard Dale and Patricia Lea (Mattingly) Brown. As a young man Chris grew up in Tulsa and attended East Central School.

After completing his education Chris began working for BD & J Inc. He worked for them for nearly 10 years as a metal fabricator. Chris then gained employment with Champion Concrete Sawing where he worked for several years. Following an accident which left him a paraplegic, Chris found himself unable to do the things he once was able to do. He strived to gain his mobility back and worked hard every day to overcome his disability.

Chris loved to go fishing, camping, swimming as well as going to the drag races. He enjoyed spending his summers at Walnut Creek, Oologah Lake as well as Flynt Creek.

Chris is described as a very funny, awesome and very energetic person. He also had a tender heart and would do many things to help people without them knowing it.

Survivors are his two children, Jeffrey Brown of Tulsa, Oklahoma and Wiley Brown of Tulsa, Oklahoma; mother Pat Hungerford of Cleveland, Oklahoma; sister Sherry Brown of Collinsville, Oklahoma; brother Jerry Brown of Tulsa, Oklahoma; niece Stormie Brown of Collinsville, Oklahoma; nephew Blaine Strong of Jennings, Oklahoma; great nephew Clayton Kitchens of Collinsville, Oklahoma; and many other relatives and friends. He was preceded in death by father Richard Brown.

Memorial Services were held 2:00 pm Friday, March 8, 2013 at First Assembly of God Church with Pastor Dan Edens officiating. Friends may share a memory with the family at the funeral home or online at [www.chapmanblack.com](http://www.chapmanblack.com). ■



### Linda Darlene Chandler

December 13, 1951-  
October 28, 2013

Linda Darlene Chandler, passed away Monday, October 28, 2013. She was born in Claremore on December 13, 1951 to William Dick Sr. and Ruby (Secondine) Dick. Her hobbies included crocheting, working crossword puzzles, watching soap

operas, doing traditional dance, and spending time with her grandchildren and great grandchildren. She was a member of Calvary Baptist Church.

Survivors include her daughters Darla Chandler of Vinita and Angela Chandler of Kansas City, MO; grandchildren Jerrad Ramsey, Courtney Cowan, Corey Cowan, Harley Campbell, Lainee Campbell, Lori Fifield, Adriane Fifield, and Tycilla Smith; great grandchildren Jaelon Ramsey and J'Leeanna Ramsey; and brothers Bill Dick of Indiana and Tony Dick of Quapaw. She is preceded in death by her parents and siblings Lambert Hayworth, Monta Lee McCoy, and Jaqueline Dick. ■



### Karen L. Cummings

August 7, 1947-  
December 10, 2013

Cummings, Karen Lee—age 66, Westerville, Ohio.

After a 12-year fight with breast cancer, Karen left this earthly life to be with her Holy Father on Tuesday, December 10, 2013. She peacefully passed in her home surrounded by her family and loved ones. Her father, Henry L. Buck, precedes her in death. She is survived by her husband, Dennis, her daughters, Denise McGaha and Dana Shipley, and her son, Kelly; her mother, Bonnie Thaxton, her brother, Douglas

*continued on page 15*

If one of your relatives or close friends has passed, please send us an obituary. We will run it in the next *Delaware Indian News*. Obituaries can be sent to [din@delawaretribe.org](mailto:din@delawaretribe.org) or to the Tribal Offices.

Please also pass along any birth or death announcements to the Enrollment Office at [lfall-leaf@delawaretribe.org](mailto:lfall-leaf@delawaretribe.org). Remember that the Community Services Committee has a burial assistance program if you need help. ■

continued from page 14

Buck; her nine grandchildren, Jared, Dustin, Allyson, Bailey, Camryn, Greyson, Blake, Korena, and Maddox. Karen was born in Nowata, Oklahoma, where she attended Northeastern Oklahoma A&M College. As a wife, a mother, and a grandmother, Karen built her home and raised her family in Knoxville, Tennessee. She later moved to Columbus, Ohio where she has resided for the last 15 years. Karen's passion for life and love of family is how she will be remembered. Whether she was playing tennis, keeping her grandchildren, or traveling to see her children and grandchildren play sports, Karen thrived off the energy of experiences. As a dear wife, mother, grandmother, and friend, she truly will be missed.

A "Celebration of Life" service was held on Saturday, December 14 at 3 pm at Genoa Baptist Church in Westerville, Ohio. A fellowship and dinner followed the service. In lieu of flowers, donations may be made in her honor to the Susan G. Komen for the Cure ([www5.komen.org](http://www5.komen.org)). ■



## Rev. Maudie May Brown Long

February 24, 1925-  
October 30, 2013

Rev. Maudie May Long, 88, resident of Bartlesville, died Wednesday, October 30, 2013 at her residence. Memorial services were held at 10 AM Saturday, No-

vember 9, 2013 at the Fountain of Life Tabernacle, 1412 N. Choc-taw, Dewey, Oklahoma. Cremation arrangements were directed by the Stumpff Funeral Home & Crematory.

Maudie May Long was born February 24, 1925 in Vera, Oklahoma to Thomas W. and May Elizabeth (Elkhair) Brown. She was raised and received her education in the Copan, Oklahoma area. Mrs. Long was married to Jack Long in Bartlesville, Oklahoma. Rev. Long has ministered at various churches in the Bartlesville area including the Fountain of Life Tabernacle in Dewey, Oklahoma. She has worked as a seamstress at the Plaza Cleaners and in her home.

Survivors include; one son James W. Snook and wife Delora of Copan, Oklahoma; one daughter June M. Edmison and husband Rusty of Bartlesville; four brothers Donald Brown of Collinsville, Oklahoma, Bud Brown of Skiatook, David Brown of Pryor and Charlie Brown of Copan, Oklahoma; three sisters Katherine Conklin of Coffeyville, Kansas, Mary May Ragan of Alvin, Texas and Reta Lankford of Ochelata, Oklahoma; five grandchildren and several great-grandchildren, great-great-grandchildren, nieces, nephews and cousins. Mrs. Long was preceded in death by her parents, her husband, three sisters Rose Conklin, Bonnie Strickland and Ruby Matthews and two brothers Richard Brown and Jerry Brown. Friends who wish may sign the online guest book and leave condolences at [www.stumpff.org](http://www.stumpff.org). ■

### Contribute!

The *Delaware Indian News* welcomes contributions—announcements, stories of general interest, photographs, etc. Send contributions to the editor at [gbrown@delaware-tribe.org](mailto:gbrown@delaware-tribe.org) or to the Tribal Offices.

Publication of course depends on available space.



## Verna Madge Parret

December 10, 1919-  
May 6, 2013

Verna Madge Parret, 93, of Camas Valley, OR, passed away at her home on Monday, May 6, 2013.

Madge was born December 10, 1919, in Coody's Bluff, near Nowata, OK. She was the daughter of John L. and Alta M. (Allen) Armstrong. She attended school at Armstrong school and Nowata High. She was a member of the Delaware Tribe and of the Turtle Clan. Her grandfather, Albert F. Armstrong, donated land for the Armstrong school. She was a descendant of Lucy Jane Journeycake and Charles Journeycake, the last principal Chief of the Delaware Tribe.

Madge was married to Charles L. Parret in Independence, KS on October 4, 1939. They were married for 53 years until Charles passed away in 1992.

Madge is survived by her daughter Linda Pfaender of North Bend, OR and son John W. Parret of Ten Mile, OR; two sisters, Alberta L. Van Noy and Sandra L. Boswell, both of Lakewood, CO; nine grandchildren; seven great grandchildren; and numerous nieces and nephews.

She was preceded in death by Charles; two infant sons; her mother and father; sister Nondis; and two brothers, Preston and John.

She was cremated and buried next to her husband at Noah cemetery in Camas Valley, OR on June 3, 2013. ■



## Shirley A. Prestin

September 14, 1944-  
May 8, 2013

Shirley passed away Thursday, May 8, 2013 in Temple. She was born September 14, 1944 in Lindsborg, Kansas the daughter of George Seely and Eva (Parker) Seely. She married her husband, Clarence Prestin February 20, 1964 in Junction City, Kansas.

They moved to Killeen in 1972 from Fort Riley, Kansas. She was the Librarian Aide for West Ward Elementary School where she cared for books and the students dearly, and worked for KISD for over 20 years until retiring. Shirley was a member of the Delaware (Cherokee) Tribe and loved reading, gardening, cooking, sewing and quilting. Most of all she loved her family, her husband, kids, and grandchildren.

She is preceded in death by her parents; three brothers, George, Walter, and Bill Seely.

Survivors include her husband, Clarence Prestin; one son, Robert Prestin and wife Rosie; two daughters, Angela Kosiek and husband Charles, Eva Scott and husband Phillip Scott III; five grandchildren, Justin Hyde, Kristin Hyde, Robert Prestin Jr., Zoe Prestin, and Koko Scott. ■



## Bob Stephens

March 23, 1925-  
July 22, 2013

Bob was born March 23, 1925 to Homer and Gladys Stephens in Chelsea, OK. He had been a resident of Dumas for 65 years. Bob married the love of his life, Helen, on May 6, 1947 in Independence, KS. She preceded him in death on November 15, 2001.

Bob honorably served his country in the United States Army during WWII. He had also worked as a welder at Conoco Phillips and retired in 1985 after 39 years of service. Bob enjoyed working with his hands, especially metal work and woodworking. He was a man of Christian faith.

He is preceded in death by his wife, Helen and one sister.

Bob is survived by two daughters: Joyce Cearley and husband Mike of Dumas and Brenda Barton and husband Coy of Amarillo; one son: Ronnie Stephens of Dumas; six grandchildren: Christy Admire and husband Damon, Penny Fahnert and husband Roger, April and Soly Stephens, Ron Stephens, Jacob Davis, and Jennifer Barton; great grandchildren: Macie and Brant Fuller, Cole League, Ali Fahnert, and Preston Fahnert; one great-great grandchild: Braylen Fuller; four brothers and four sisters.

The family suggests memorials be to Memorial Hospice, 209 S. Bliss Ave., Dumas, TX 79029 and Great Plains Nursing and Rehab 315 East 19th St., Dumas, TX 79029. ■

# Minutes of the Tribal Council, September 2013-November 2013

## Monday, Sept 9, 2013 Community Center

*Respectfully submitted by Councilwoman Jenifer Pechonick*

Chief called the meeting to order at 5:55 pm. Councilwoman Annette Ketchum prayed. Present: Chief Pechonick, Assistant Chief Chet Brooks, Jenifer Pechonick, Annette Ketchum, Janifer Brown, Nathan Young and Verna Crawford.

Guests: Bonnie Thaxton, Cy Hughes, Charles and Mary Randall, Mary and Gilbert Watters, Jimmie Johnson, Nancy Sumpter, CeCe Biggoose, Leslie Fall-Leaf, Jo Griffith, Bruce Martin, John Chapman Young, Priscilla and Don Mason, Kay Anderson, Curtis Zunigha, and Greg Brown.

Nathan Young made a motion to approve the amended agenda. 2nd Janifer Brown. Motion passed all in favor. Jimmie Johnson, EPA Director, presented the Integrated Solid Waste Management Plan and resolutions.

Nathan Young made a motion to approve Resolution 2013-48 To approve the Integrated Solid Waste Management Plan, 2nd Nathan Young. Motion passed all in favor.

Jenifer Pechonick made a motion to approve Resolution 2013-49, To authorize and approve the Delaware Tribal Environmental Protection Act. 2nd Annette Ketchum. Discussion: Curtis Zunigha stated he reviewed the legislation to officially establish the program. Prior to this resolution, there were no environmental laws on the tribal books. Motion passed all in favor.

Annette Ketchum made a motion to approve the minutes August 5, 2013 with corrections. 2nd Jenifer Pechonick. Motion passed all in favor.

Nathan Young made a motion to approve the Treasurer's report pending audit. 2nd Janifer Brown. Motion passed all in favor. Jenifer Pechonick made a motion to ap-

prove the reports in the packet, 2nd Nate Young. Motion passed all in favor. Chief Judge Don Mason gave a judges' report. He said the judges have made a priority of revising the codes. He said other priorities are 1) The Child Support Enforcement, 2) statute for ICWA and 3) Election Code. He said the holes in the Tribal codes will be addressed. He praised Libbi Gray's work with the judges. Jenifer Pechonick asked about a budget. He shared the judges' discussion of the subject.

### Unfinished Business

DFMS 8(a) – We are pretty close to submitting the application. Jenifer Pechonick made a motion to approve a "sue or be sued" clause in an amendment of the DFMS Articles of Organization, pending attorney review. 2nd Janifer Brown. Motion passed all in favor. Discussion was held regarding 70th Anniversary of NCAI in Tulsa which is to be held in Tulsa this year.

Annette Ketchum made a motion to prepare and approve Resolution 2013-50 to approve Chief Pechonick as the Tribe's delegate and the rest of the attending Council as alternates. 2nd Jenifer Pechonick. Motion approved all in favor.

Verna Crawford made a motion to approve Resolution 2013-47 Approval of Tribal Membership. 2nd Annette Ketchum. Discussion: 37 members were enrolled this month. Motion passed all in favor. Nathan Young made a motion to enter into Executive Session, 2nd Annette Ketchum.

Nathan Young made a motion to return to regular session, 2nd Jan Brown. Motion passed all in favor.

Jenifer Pechonick made a motion to extend the Gray & Gray contract for six months 2nd Nathan Young. Motion passed with six in favor and one no, Annette Ketchum.

Meeting adjourned at 7:31 pm.

## Monday, October 7, 2013 Community Center

*Respectfully submitted by Councilwoman Jenifer Pechonick*

The Chief called the meeting to order at 5:48 pm. Councilwoman Annette Ketchum prayed. Present: Chief Pechonick, Assistant Chief Chet Brooks, Jenifer Pechonick, Annette Ketchum, Janifer Brown, Nathan Young and Verna Crawford.

Guests: Cy Hughes, Charles and Mary Randall, Mary Watters, Bonnie Jo Griffith, Priscilla and Don Mason, Curtis Zunigha, Chris Ketchum, Pat Donnell, Brandon Howell, Sandi Jamison, and Greg Brown.

Jenifer Pechonick made a motion to approve the agenda. 2nd Verna Crawford. Motion passed all in favor. Jenifer Pechonick made a motion to approve the minutes September 9, 2013 with corrections. 2nd Chet Brooks. Discussion: Add Gray and Gray. Motion passed all in favor.

Nathan Young made a motion to approve the Treasurer's report pending audit. 2nd Janifer Brown. Motion passed all in favor. Jenifer Pechonick made a motion to approve the reports in the packet, 2nd Chet Brooks. Motion passed all in favor.

Annette Ketchum made a motion for department directors to submit their redacted monthly report electronically to Greg Brown for posting on the website. 2nd Jenifer Pechonick. Motion passed 6 yes, 1 abstain (J. Brown).

### Unfinished Business

Chief Judge Don Mason gave a judges' report. He said the judges have made a priority of revising the judiciary codes. He continues to work on Child Support Enforcement. Judge Mason discussed the need for the Oklahoma Tribes to host their own sovereignty sym-

posium and boycott the State Supreme Court's. Councilman Nate Young praised Judge Mason's work on the recent ICWA case. Councilwoman Jenifer Pechonick suggested UINOKT as a vehicle for a united Sovereignty Symposium. Judge Mason said a topic at NCAI will likely be a new organization to champion ICWA.

### New Business

Jenifer Pechonick made a motion to approve Resolution 2013-52 Approve Tribal Membership, 2nd Annette Ketchum. Discussion: 28 members newly enrolled. Motion passed all in favor.

Verna Crawford made a motion to approve Resolution 2013-53 To authorize release of Tribal membership dataset to election company for ballot. 2nd Nate Young. Motion passed all in favor. Verna Crawford read a poll vote September 16 taken to support the Trust Board's election rules to release a voter's list to candidates at \$25 per disk (one disk per candidate). 4 yes, 3 no response (Chief Pechonick, J. Brown, A. Ketchum).

Jenifer Pechonick made a motion to approve resolution 2013-54 authorizing an Indian self-determination act contract for health programs...in Kansas, 2nd Janifer Brown. Motion passed all in favor.

Jenifer Pechonick made a motion to table the Delaware Tribe Indian Child Welfare Code, 2nd Janifer Brown. Discussion: the Tribal Council wishes to study the proposed code. Motion passed all in favor. Verna Crawford made a motion to approve \$500 for bingo and gas cards. 2nd Jenifer Pechonick. Discussion: Bingo will start at 11:30 with sandwiches and chips, gas cards will be drawn for those present on the hour from noon to six, the General Council meeting will begin at 1:00 pm. After the meeting there will be elder programs until supper around 4:30 pm. Soup and

frybread will be served for supper with a stomp dance will follow. The Trust Board has money in the budget for General Council for the supper and stomp. Motion passed all in favor.

Jenifer Pechonick made a motion to co-chair a wellness committee with Bonnie Jo Griffith for a healthier community, 2nd Janifer Brown. Motion passed all in favor.

Nate Young made a motion for a short recess and an executive session. 2nd Janifer Brown. Motion passed all in favor.

No action was taken following executive session.

Meeting adjourned at 8:30 pm.

## Monday, Nov 5, 2013 Community Center

*Respectfully submitted by Councilwoman Jenifer Pechonick*

The Chief called the meeting to order at 5:50 pm. Councilwoman Annette Ketchum prayed. Present: Chief Pechonick, Assistant Chief Chet Brooks, Jenifer Pechonick, Annette Ketchum, Janifer Brown, and Verna Crawford. Nate Young was absent due to illness.

Guests: Charles and Mary Randall, Gilbert & Mary Watters, Jo Griffith, Jack Tatum, Mike Taylor, Jean Lewis, Kyle Coffman, Curtis Zunigha, Lacey Harris and Greg Brown. The benefit for Bruce Martin is scheduled for November 23, 2013. Chet Brooks thanked Bonnie Jo Griffith for her service to the Trust Board.

Jenifer Pechonick made a motion to approve the agenda. 2nd Janifer Brown. Discussion: Jenifer explained the resolutions absent from the packet. Motion passed all in favor. Verna Crawford made a motion to approve the minutes October 7, 2013, 2nd Chet Brooks. Discussion: Annette did not see the minutes ahead of time. 5 yes, 1 abstain (Annette Ketchum). Motion passed.

*continued on page 17*



*continued from page 16*

Janifer Brown made a motion to approve the Treasurer's report pending audit. 2nd Verna Crawford. Motion passed all in favor. Jenifer Pechonick made a motion to accept the reports in the packet, 2nd Chet Brooks. 5 yes, 1 abstain (Annette Ketchum). Motion passed.

Curtis Zunigha presented his report verbally as he did not have a written one for the packet. He discussed the General Council and praised logistics of the meeting and presentation of accomplishments of the administration. ATG fund release is pending. Fee-to-Trust Application is pending submission of resolution to support amended legal description. He thanked the staff for helping with operational activities during Bruce Martin's absence. He praised DFMS for an amenable relationship and their responsiveness with Tribal needs, work orders and priorities. Housing – he requested a workshop on housing details. Cherokee are considering release of the 2014 Housing monies for Tribe to draw down directly, pending implementation plan. Self-monitoring audit was completed by Cherokee Nation. Curtis is reviewing the concerns with Jean Lewis. Response is due back to Cherokee Nation by Nov 23. Staff Development projects, job descriptions and policies and procedures are moving forward and an important piece of direct funding from and service area/jurisdiction. Curtis will be conducting annual performance reviews Nov 18-27 (some overdue) and is working with Mike Taylor to complete. Curtis met with Jim Baker and approved use of Tribal Center first and third Monday of every month from 9a-12p beginning in December to assist Disabled American Veterans. Friday, Nov 8 at 10:30 is the War Mother's recognition event. Janifer Brown and the Council agreed that the logistics of General Council were worry-free, Chet Brooks stated the employees' displays were the

best yet. Mary Randall observed the room was in order for Monday.

### Unfinished Business

#### CHILD WELFARE CODE

Verna Crawford made a motion to approve Resolution 2013-61 Enact ICW Codes, 2nd Annette Ketchum. Discussion: Jenifer Pechonick thanked Lacey for her work on the codes and her work on the programs, the Council agreed. Motion passed all in favor.

#### New Business

Janifer Brown made a motion to approve Resolution 2013-55 Approve Tribal Membership, 2nd Verna Crawford. Discussion: 19 members newly enrolled, Jenifer Pechonick read the names. Motion passed all in favor.

Jenifer Pechonick made a motion to approve Resolution 2013-56 Insurance Code Amendment. 2nd Janifer Brown. Discussion: a grandfather clause for companies if codes change. Motion passed all in favor.

Note: the number Resolution 2013-57 was voided due to duplication.

Jenifer Pechonick made a motion to approve Resolution 2013-58 & 2013-59 authorizing submission of Title VI Nutrition Grant.& Needs Assessment for the purpose of Title VI Nutrition Grant, 2nd Verna Crawford made a motion to approve

Verna Crawford made a motion to approve Resolution 2013-60 authorizing Resubmission of Amended Legal Description on Caney Fee-To-Trust Application, 2nd Chet Brooks, motion passed all in favor. Verna Crawford made a motion to approve Resolution 2013-62 to approve Budget to Support Kansas Expansion, 2nd Janifer Brown. Discussion: Bonnie Jo Griffith discussed the need for housing here. Motion passed all in favor.

Janifer Brown made a motion to approve Resolution 2013-63 to move BIA supervision to the

Miami Agency, 2nd Annette Ketchum. Motion passed all in favor.

Bonnie Jo Griffith reported in the elder's meeting it was asked

for any veteran's picture taken down during renovations to be put back on display. Bonnie Jo Griffith will follow up on display.

Charles volunteered to make the frames for the cost of materials. DFMS will paint the walls and hang the pictures.

Meeting adjourned 6:56 pm. ■

## Education Committee Assistance and Programs

### Take advantage of these programs; they are here for you!

**Higher Education Scholarship:** Up to \$2,400 in scholarship funding. Full time students may apply for \$300 per semester for up to eight semesters. Part time students will receive \$200 per semester up to 16 semesters. Fall scholarship applications will be accepted from June 1 through July 31. Students must maintain a 2.7 GPA (grade point average) in the last semester attended.

**School Supply Vouchers:** Help with the cost of purchasing the needed school supplies for their child and/or children ages Pre-K to 5th Grade. Available from July 15th to August 31st or until vouchers are exhausted. Deadline is September

30 of every year. Up to \$40 per child with receipt of purchase.

**Education Assistance:** Help for registered Delaware students who need some type of assistance for students ages 6th thru 12th grade while enrolled in school, such as graduation expenses, ACT exams, summer school, band, choir, etc. This program has a maximum payment of \$50 per applicant per fiscal year.

**Athletic Assistance:** Help for registered Delaware students involved in school sponsored athletic programs. Students may be reimbursed up to \$50 per application per fiscal year.

**Academic Achievement Award:** Available on a one-time basis

to registered tribal members that have graduated in the current fiscal year/academic school year from high school, college, or Vo-Tech with a current 3.5 GPA.

**Driver's Education Assistance:** Help to defray costs of driver's education classes through an accredited training facility. This program has a maximum of \$75 per applicant per fiscal year.

**Adult Vocational Training Assistance:** Help with costs of short-term vocational training classes. Limited to out of school students who wish to learn new or upgrade current skills. Maximum of \$200 per applicant per fiscal year. ■

## Report from the Education Committee

*Dr. Nicky Kay Michael, Chair*

We want to extend our appreciation for your vote to pass the new Trust Document, which effectively increases the scholarships to 25% of the interest gained from our former Trust Monies. More importantly, our students thank you!

These last few months have been very active. A few of those highlights include:

On October 22, we held a Scholarship Workshop attended by Operation Eagle and several other local Indian and education programs. Cara Cowan Watts, Councilmember from the Cherokee Nation, presented strategies for applying and obtaining award winning scholarships. We are very grateful for her time and energy.

Scholarship applications soon can be submitted via the Internet! For all you tech savvy college students, we felt that updating our application to meet today's cyber society, we should at the very least, provide an online application process. We will still, however, accept hard copies of your scholarship application. Check our web site ([www.delawaretribe.org](http://www.delawaretribe.org)) for updates about when this goes live.

At our monthly Education Committee meeting on December 16, we had to make some tough decisions. Although we increased the percentage from the interest of the Trust Monies, given the amount of applications we received this year, we are unable to sustain providing \$400 per semester scholarships

through the entire year of 2014. The Education Committee had to decrease the amount to \$300 per semester. We apologize to our students who depend and need our scholarships. In January, we will be holding a workshop to address how to increase the Education monies through other possibilities, such as developing a fundraising system.

If you have an outstanding Delaware college student you would like to recognize, please email me at [nickykaymichael@gmail.com](mailto:nickykaymichael@gmail.com). Let me know their course of study, GPA, and why you think they should be recognized. We appreciate all your support and hope all our students and families have a wonderful holiday season. ■

# Minutes of the Trust Board, September 2013-October 2013\*

## Monday, Sept 9, 2013 Community Center

*Respectfully submitted by Verna Crawford, Trust Board Secretary*

Chairman Chet Brooks called the September 9, 2013 Trust Board meeting to order at 4:15 p.m. Joe Brooks gave the invocation.

Secretary called the roll; those present were Chairman Chet Brooks, Vice Chair and Secretary Verna Crawford, John Sumpter, Joe Brooks, Bonnie Jo Griffith, Homer Scott and Nicky Michael

Chairman Chet Brooks welcomed guests. He invited anyone who would like to address the Board to do so.

Guests present: Chief Paula Pechonick, Councilman Nathan Young, Councilwomen Janifer Brown and Annette Ketchum, Cy Hughes, Darrell Glenn, Mary Watters, GR. Watters, Charles Randall, Mary Randall, Bonnie L. Thaxton, Bruce Martin, Nancy Sumpter, Darrell Glenn, John Chapman Young, Greg Brown, Priscilla Mason, Curtis Zunigha, Don Mason, Cecilia Biggoose, and Leslie Fall-Leaf.

Joe Brooks moved to approve the agenda. Bonnie Jo Griffith seconded the motion. Motion carried with six yes.

## Minutes of Previous Meeting

Verna Crawford moved to approve the minutes of August 5, 2013 with corrections if needed. Bonnie Jo Griffith seconded the motion.

Motion carried with five yes and one abstention (Bonnie Jo Griffith).

**\* Note: Minutes of the Trust Board meeting of November 7, 2013 have not been approved at the time of DIN publication. They will be in the April 2014 issue.**

## Treasurer's Report

Verna Crawford moved to accept the Treasurer's report pending audit seconded by Joe Brooks. Discussion: Chair Brooks commented that the account had recovered \$60,000 that was lost due to the market going down last month.

Motion carried with six yes.

## Committee Reports

### ECONOMIC DEVELOPMENT:

#### CHAIR JOE BROOKS

No report—no meeting.

### COMMUNITY SERVICES:

#### CHAIR VERNA CRAWFORD

The Community Services Committee met on Monday, August 12, 2013. The Committee met August 12, 2013 and had to reschedule till August 19. The Committee reviewed and approved 29 requests for assistance. There were 4-Burial, 1-Emergency, 2-Student Optical, 2-Elder Optical, 5-Dental, & Utility, 2-Medical, 1-Elder Prescription, 1-Emergency Travel, and 3-Rental Assistance requests for a total of \$6,981.14. The next meeting will be Wednesday, September 11, 2013 following the Education meeting.

### LAND MANAGEMENT:

#### CHAIR JOE BROOKS

No report—no meeting

Discussion: Chairman Brooks pointed out that if and when the proposed revised Trust Document the budget would change. Economic Development and Land Management will be replaced with an Elders and a Veterans committee, both of which will receive 5% each.

Community Service, Education, Cultural Preservation and Tribal Operations will be increased by 5% each.

Motion carried with six yes.

Bonnie Jo Griffith moved for John Sumpter and Homer Scott to represent the Trust Board at NCAI in Tulsa in October. The Trust Board will pay per diem rate

for food, mileage and the registration fee. Joe Brooks seconded the motion.

Motion carried with four yes and two abstentions (John Sumpter and Homer Scott).

## New Business

Nancy Sumpter filed petition number 2013-1 on July 30, 2013.

The Petition stated the following:

"We, the Delaware Tribal members whose signatures appear below, Demand the Delaware Trust Board hold a referendum election for the purpose of approving the "New" Trust Document with the Master Plan incorporated. This document has been presented to the people at three town Hall meetings, in the Delaware Indian News and on the official Delaware website. The document has been drafted according to the input of Delaware Tribal members at the town hall meetings and responses received from Delaware Tribal members by mail, in person or email."

Petition pages 1-6, with 34 signatures, were officially verified on August 27, 2013.

Petition pages 7-20, with 44 signatures, were officially verified on August 28, 2013.

Petition pages 21-23, with 10 signatures, were officially verified on August 29, 2013.

Petition pages 24, with 2 signatures, were officially verified on August 30, 2013.

Petition pages 25-35, with 34 signatures, were officially verified on September 6, 2013.

Total of 124 signatures submitted as of Monday, September 9, 2013.

There were 123 signatures officially verified by Verna Crawford, Trust Board Secretary.

One was denied because individual is part Cheyenne and is enrolled with that tribe.

Report submitted by Verna Crawford, Trust Board Secretary.

The proposed revised Delaware Trust Document will be on the

ballot for the November 2, 2013 election.

## Other Business

Joe Brooks asked everyone say Happy Birthday to his brother, Chairman Chet Brooks.

Everyone sang Happy Birthday to him.

Bonnie Jo Griffith moved to hold the next meeting on October 7, 2013 at 4 p.m. at the Delaware Community Center. Joe Brooks seconded the motion.

Motion carried with six yes.

John Sumpter moved to adjourn the meeting. Joe Brooks seconded the motion.

Motion carried with six yes.

Chairman Brooks declared the meeting adjourned at 5:25 pm.

## Monday, October 7, 2013 Community Center

*Respectfully submitted by Verna Crawford, Trust Board Secretary*

Chairman Chet Brooks called the October 7, 2013 Trust Board meeting to order at 4:10 pm.

Nicky Michael gave the invocation.

Secretary called the roll. Those present were Chairman Chet Brooks, Vice Chair/Secretary Verna Crawford, Treasurer Bonnie Jo Griffith, John Sumpter, Joe Brooks, and Nicky Michael. Homer Scott's absence was due to illness.

Chairman Chet Brooks welcomed guests. He invited anyone who would like to address the Board to do so.

Guests, Tribal officials, and employees present included Chief Paula Pechonick, Judge Charles Randall, Mary Randall, Judge Rick Barnes, Kristopher Ketchum, Cy Hughes, Mary Watters, Gil Watters, Pat Donnell, Greg Brown, Janifer Brown, Judge John Chapman Young, and Business Manager Curtis Zunigha.

Bonnie Jo Griffith moved to approve the agenda as presented.

Joe Brooks seconded the motion. Motion carried with all in favor.

## Minutes of Previous Meeting

Verna Crawford moved to approve the minutes of September 9, 2013 with corrections. John Sumpter seconded the motion. Motion carried with five yes.

## Treasurer's Report

Verna Crawford moved to accept the Treasurer's report pending audit, seconded by Joe Brooks. Motion carried with five yes.

## Committee Reports

### ECONOMIC DEVELOPMENT:

#### CHAIR JOE BROOKS

No meeting.

### COMMUNITY SERVICES: CHAIR VERNA CRAWFORD

The Community Services Committee met on Monday, September 10, 2013. There were 27 applications for assistance approved, three Burial, two Emergency, three Elder Optical, five Dental, four Utility, three Medical, three Hospital Equipment, one Elder Prescription and three Rental assistance for his a total of \$5,975.37. Due to National Congress of American Indians (NCAI) to be held in Tulsa October 13 to 17, the Committee will meet on Tuesday, October 8 at 11 am instead of Monday, October 14.

### LAND MANAGEMENT:

#### CHAIR JOE BROOKS

No meeting.

### CULTURAL PRESERVATION:

#### CHAIR CHET BROOKS

Meets the third Tuesday of each month starting at 6 p.m. in the Community Center. Brooks reported there was a good attendance at Delaware Days. Curt Anderson was honored as Elder of the year and Homer Scott was named Veteran of the year.

*continued on page 19*

continued from page 18

#### EDUCATION:

##### CHAIR NICKY MICHAEL

The Committee regularly meets on the second Monday of each month. The Committee met September 10, 2013. Nineteen applications were approved, nine School Supplies, four Education assistance, three Athletic assistance, two Driver's Education, and one Scholarship for a total of \$1,218.55.

#### REINVESTMENT:

##### CHAIR JOHN SUMPTER

Meets quarterly. No report was given due to no meeting being held.

#### TRIBAL OPERATIONS:

##### CHAIR JOE BROOKS

Meets quarterly. No report was given due to no meeting being held.

**Joe Brooks** moved for Community Services and Education Committees meet on the same day each month. Nicky Michael seconded the motion. Discussion:

there are times when meeting on the same day each month may be impossible, such as on holidays. **Motion** carried with three yes and two no (Verna Crawford, Bonnie Jo Griffith).

#### New Business

None.

#### Other Business

Verna Crawford read two poll votes taken on September 16, 2013 to release the electronic list of voters to Automated Election Services for the 2013 Trust Board Election. Chairman Brooks, Verna Crawford, Homer Scott, John Sumpter, Joe Brooks and Bonnie Jo Griffith voted yes. There was no response from Nicky Michael. 2) To sell candidates a voters list on disk at the price of \$25 per disk (one disk per candidate). Chairman Brooks, Verna Crawford, Homer Scott, John Sumpter and Joe Brooks voted yes. Bonnie Jo Griffith voted no. There was no response from Nicky Michael. **Verna Crawford** moved to accept the poll votes taken on September 16, 2013. Joe Brooks seconded the motion.

**Bonnie Jo Griffith** moved to hold the next meeting on November 4, 2013 at 4 p.m. in the Conference Center. **Joe Brooks** seconded the motion. Motion carried with five yes.

**Joe Brooks** moved to adjourn. Bonnie Jo Griffith seconded the motion. Motion carried with five yes.

**Chairman Brooks** declared the meeting adjourned at 5:15 pm. ■

## Community Services Programs

### Take advantage of these programs; they are here for you!

**Student Optical Assistance:** Assistance to students enrolled in grades K-12, colleges, universities or vocational technology schools. Funds can be designated to pay for glasses, contacts, physician visits or related costs. Each request may not exceed \$200.

**Burial Program:** Burial assistance for Delaware tribal members. The family may apply for up to \$500. The funds may be applied to expenses as is most beneficial.

**Utility Assistance:** Emergency utility assistance for tribal members up to \$200. Payment will be made directly to the vendor or utility company and may include gas, propane, water, electricity, wood or related utility services.

**Housing Assistance:** Assistance in emergency situations on a one-month, one-time, once-a-year basis. Amount of assistance that can be approved is limited up to \$200.

**Dental Assistance:** Assistance for dental services up to \$350. Services may include tooth repair, dental fillings, dentures or emergency services. Routine dental exams or cleaning are not covered.

**Medical Assistance:** Assistance to pay medical bills, including but not limited to medical equipment (purchase or rental), home health care, pharmacy, etc. not to exceed \$200.

**Emergency Travel:** Medical transportation services for Delaware tribal members to include, but not limited to, health transportation costs, assistance and/or other related costs. One-time assistance not to exceed \$200.

**Hospital Equipment Assistance:** Assistance with hospital equipment for Delaware tribal members who are hospitalized during the year

and some costs of hospital equipment is not paid by third parties. Funds will be used to pay for hospital equipment, which may include rentals, small equipment purchases or related costs up to \$250.

**Emergency Assistance:** Emergency assistance to Delaware tribal members. Funds are to be used for emergency situations. Assistance includes, but is not limited to, groceries or related assistance. Applicants must utilize all other community resources prior to application. Funds are allocated up to \$200 and will be disbursed as determined by the Community Service Committee on a case-by-case basis.

**Elder Programs, Optical Assistance:** Assistance for optical services to elders age 55 and over. Funds may be used for services, including glasses, physician's visits or related costs up to \$200 annually.

**Elder Programs, Prescription Medication Assistance:** Prescription medication assistance to Delaware elders age 60 and over for pharmacy and related cost. Elders may receive assistance not to exceed \$900 per calendar year. Elders may apply more than once per calendar year until \$900 is reached. Funds may be disbursed to vendors on a monthly basis not to exceed \$75 per month for long term recurring medication.

*PLEASE NOTE: The Community Services Committee has adopted income guidelines for all assistance programs with the exception of Burial Assistance. The income guidelines will go into effect on January 1, 2014. The Guidelines are based on the guidelines used by the Delaware Tribe Housing Program, and are intended to insure that these services remain available to those in need. ■*

### Delaware Tribe of Indians



#### Bartlesville Tribal Offices:

170 NE Barbara  
Bartlesville, OK 74006  
918-337-6590

#### Chelsea Housing Office:

6 Northview Dr.  
Chelsea, OK  
918-789-2525

#### Caney Office:

601 High Street  
Caney, KS 67333  
620-879-2189

#### Office Hours:

8:00 a.m.–5:00 p.m. M-F

#### Tribal Web Site:

www.delawaretribe.org

#### General Email:

tribe@delawaretribe.org

### Elder Exercise Program

Delaware Tribal Community Center  
Bartlesville, OK  
Mon, Wed and Fri 10:30 am

Elder friendly exercise group meets three times a week. Exercises are designed to do in a chair or standing.

## Interested in Joining the New DEA?

The Delaware Enterprise Authority (DEA) was formed as an independent body from the Tribal Council and Trust Board to research, evaluate, and maintain business ventures and/or economic development projects for the economic benefit of the Delaware Tribe and its members.

As constituted now, the DEA has a seven member Board of Directors. Currently there are

three vacancies that we would like to fill immediately.

The Board of Directors has regular monthly meetings, or as frequently as deemed necessary to manage the affairs of the Authority. Meetings may be conducted through the use of any means of communication by which all participants may simultaneously hear and communicate with each other.

Per the DEA's charter, the

Board is appointed by the Chief. Appointments will be made as soon as possible, so please send a letter of interest to her office at:

Office of the Chief  
Delaware Tribe of Indians  
170 NE Barbara Ave  
Bartlesville, OK 74006

or by email at

[ppechonick@delawaretribe.org](mailto:ppechonick@delawaretribe.org)

Please include in the subject "DEA Board." ■



## Wills Clinic Announced

Beginning December 15, Don Mason, Jr., will be starting a no cost wills clinic. Any Delaware, needing a simple will, may apply for acceptance to the clinic. Those wishing to apply must meet certain criteria. Applicants must have a Delaware Tribal roll number. Also, wills clinic is open only to those seeking a simple will. Those Delaware with more complex estates likely will not qualify for the clinic. The clinic is intended as a public service for those Delaware with small or minimal estates. Feel free to contact Don Mason at 918.344.7828 ■

## Veterans Assistance Twice Monthly

The Disabled American Veterans (DAV), Washington County Chapter 65 will be at the Community Center reception area on the first and third Monday of every month to assist veterans and their spouses with filing for their VA benefits. There will be someone available from 9:00 am to 12:00 noon, and drop-ins are welcome.

Contact information for Disabled American Veterans:

P.O. Box 491, Dewey, OK 74029  
Phone (918) 534-3988  
Fax: (918) 534-3909



## Mystery Photos



### Know who this is?

If you do, please contact Tribal Archivist Anita Davis Mathis at (918) 337-6595 or by email [amathis@delawaretribe.org](mailto:amathis@delawaretribe.org)

## Oklahoma Artists Honored with Native Arts and Cultures Foundation Fellowships

VANCOUVER, Wash., (Nov. 7, 2013) – From a national call for entries to American Indian, Alaska Native and Native Hawaiian artists, the Native Arts and Cultures Foundation (NACF) has awarded 2014 NACF Artist Fellowships to three Oklahoma artists.

Writer Eddie Chuculate (Muscogee Creek/Cherokee) of Muskogee, Okla. received a 2014 NACF Literature Fellowship. Renowned basket-weaver Shan Goshorn (Eastern Band Cherokee) of Tulsa, Okla. is a 2014 NACF Traditional Arts Fellow and poet Santee Frazier (Cherokee Nation of Oklahoma) of Syracuse, N.Y. received a fellowship in literature.

The three talented artists are among 16 American Indian, Alaska Native and Native Hawaiian artists selected by the foundation to carry this honor in 2014. Each year, the Native-led arts foundation awards fellowships to recognize exceptional Native artists who have made a significant impact in the fields of dance, film, literature, music, traditional and visual arts. Chuculate, Goshorn and Frazier are the first Oklahoma artists to be awarded NACF Artist Fellowships.

For 2014, the foundation awarded \$220,000 to support individual artists through NACF Artist Fellowships ranging from \$10,000 to \$20,000 per artist. "It is our honor to present a dynamic new cohort of NACF Artist Fellows for 2014," said NACF Program Director Reuben Roqueñi (Yaqui/Mexican). "Native artists are taking leadership in addressing critical issues across the country and act as catalysts for change in our communities. The fellowships support these artists as they delve deeper into their practices and cultivate their artistic voices to transport and inspire us. Join us in celebrating their adventurous and creative spirits."



Top left, Santee Frazier; top right, Eddie Chuculate.  
Bottom, Shan Goshorn.

### 2014 NACF Artist Fellows

- Keola Beamer (Native Hawaiian), Lahaina, Hawaii, Music Fellowship
- Raven Chacon (Navajo), Albuquerque, N.M., Music Fellowship
- Eddie Chuculate (Muscogee Creek/Cherokee), Muskogee, Okla., Literature Fellowship
- Kaili Chun (Native Hawaiian), Honolulu, Visual Arts Fellowship
- Santee Frazier (Cherokee Nation of Oklahoma), Syracuse, N.Y., Literature Fellowship
- Jeremy Frey (Passamaquoddy), Indian Island, Maine, Traditional Arts Fellowship
- Shan Goshorn (Eastern Band of Cherokee), Tulsa, Okla., Traditional Arts Fellowship
- Melissa Henry (Navajo), Rehoboth, N.M., Film Fellowship
- Micah Kamohoali'i (Native Hawaiian), Kamuela, Hawaii, Dance Fellowship
- Billy Luther (Navajo/Hopi/Laguna), Los Angeles, Film Fellowship
- Patrick Makuakāne (Native Hawaiian), San Francisco, Dance Fellowship
- Nora Naranjo-Morse (Tewa-Santa Clara Pueblo), Espanola, N.M., Visual Arts Fellowship
- Da-ka-xeen Mehner (Tlingit/N'ishga), Fairbanks, Alaska, Visual Arts Fellowship
- Israel Shotridge (Tlingit), Vashon, Wash., Traditional Arts Fellowship
- Brooke Swaney (Blackfoot/Salish), Polson, Mont., Film Fellowship
- David Treuer (Ojibwe), Claremont, Calif., Literature Fellowship

Since 2010, the foundation has supported 85 Native artists and organizations in 22 states, awarding \$1,602,000 in assistance, including an award to the Association of Tribal Archives, Libraries and Museums of Oklahoma City. The generosity of arts patrons, the Ford Foundation and Native Nations allows the Native Arts and Cultures Foundation to support the vibrant arts and cultures of American Indian, Alaska Native and Native Hawaiian peoples. To read more about these three Oklahoma artists and all the talented 2014 NACF Artist Fellows, visit: [www.nativeartsandcultures.org](http://www.nativeartsandcultures.org) ■



## Mike Pace (Xinkwilēnu) Returns to Germany

Jim Rementer

Two years ago former assistant chief Mike Pace was invited to Germany to tell Lenape stories at the Karl May Festival. At the time he had another commitment that caused him to return to the United States not long after the festival. But he said that sometime he would like to return to Germany for a vacation.

In June of this year Mike and his wife Ella were able to return for that vacation, accompanied by Jim Rementer. He found that once again he became a spokesman for his Delaware Tribe. Fortunately this is what Mike does on an almost daily basis in his job at the Conner Prairie Mu-

seum near Indianapolis.

One of the first events he was taken to on this trip was a medieval conference in Wallhalben, Germany, where he participated in a number of events. He was asked to talk a bit about his Delaware Tribe. He did so and also presented some Delaware dollars to the conference leaders. He was joined at the conference by a Cheyenne named Michael Running Wolf, Jr., and his fiancée Caroline Old Coyote, a Crow Indian who is one half German and fluent in the German language. They also gave talks about their tribes.

Toward the end of his vacation

Mike was once again called upon to contribute to a documentary being made about Indian people. So, on the day he was leaving in the morning, we were taken to a small rustic area by a stream not too far from Munich where the interview was conducted.

The tribe should be proud of Mike and Ella, whose efforts to spread goodwill and cultural knowledge greatly expand the Tribe's reputation. Wanishi to both of them, and to a good friend of the tribe, Robert Goetzenberger, for his help in making the trip arrangements!■



Mike and Robert Goetzenberger have a gift exchange. Mike demonstrates the Delaware Bean Dance.

## Local man to mark 100th birthday

The children of Lewis A. Ketchum are hosting a 100th birthday party for him from 2 to 4 p.m. Jan. 4, 2014, at the Delaware Community Center, 5100 Tuxedo Blvd., in Bartlesville.

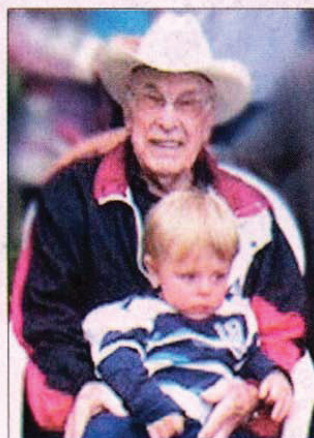
All of his friends and relatives are welcome to attend this come-and-go reception and wish him a happy birthday.

Refreshments will be served.

Ketchum was born on Jan. 3, 1914, in Woodward. His mother, Bertha Scoval Ketchum was visiting family in Woodward at his birth.

The Ketchum home was north of Dewey on the Delaware Indian allotment owned by his father, Charles C. Ketchum. Lewis Ketchum was the only son, with one sister, Mildred Ketchum Morrison, deceased, and two sisters, Imogene Kay Ketchum Walling of Edmond, and Fannie Jane Ketchum Ethridge, of Tulsa.

His father died in 1968 and his mother died at age 102 in 1996.



Lewis A. Ketchum and Eli Thomas

Lewis Ketchum attended Wayside School northeast of Dewey in grade school and then went through high school at Chilocco Indian School north of Ponca City.

He was employed for 42 years at Reda Pump Company in the drafting department.

He was married to Lillian Berry, Alta Couch and Edith Harvey, all of who are deceased.

Lewis Ketchum has a son, Dee Ketchum and wife Annette of Bartlesville; a daughter, Pat Donnell and husband Walter of Copan, and one son, Lewis B. Ketchum, deceased, and his wife Betty of Tulsa. Grandchildren include Craig Ketchum, Kent Ketchum, Kevin Ketchum, Brian Ketchum, Steven Donnell, Sandy Donnell Tompkins, Doug Donnell, DeAnn Ketchum and Kala Ketchum. He has 22 great-grandchildren and 13 great-great-grandchildren.

Lewis Ketchum has lived a long life and when asked to what he attributes his long life, he only answers, "I don't know."

Family members believe it may be attributed to being active, orderly and not worrying. He has longevity in his DNA!

Published in Bartlesville Examiner-Enterprise, Sunday, December 15, 2013.

## HAPPY NEW YEAR 2014

Chet Brooks, Assistant Chief & Trust Board Chairman

**K**uli Malsi Hach Lenapeok Nitis – How are you, Lenape and friends?

My Holiday greetings are extended to all Delaware relatives and friends. May the Creator provide all of us and our Great Tribe peace, prosperity, good health and happiness in 2014 and all future years our Creator gives. Others have reported the many accomplishments of 2013 and I acknowledge these and praise every individual's work. Yes, we have also had some failures in 2013 but I will not dwell on these except to say that I personally resolve to change any failures into future successes.

Congratulations to Mary L. Watters, Larry Joe Brooks and Homer E. Scott, Jr. for their election to Trust Board. Special thanks are extended to all Board Members for many hours spent

in revision of the Trust Document. A referendum vote of the adult voting membership approved the revisions by 83.3%. The new plan provided a budget 5% each for two new committees, Elders and Veterans. The new plan also provided 5% more each for Education, Community Services, and Cultural Preservation, all of which approached shortfalls in 2013. We regret that these increases will not cover projected scholarship cost and therefore have reduced scholarships to \$300 per semester with a required grade point of no less than 2.7. We have also had to place maximum income guidelines on all Community Service Assistance Applications excepting burial assistance.

God bless the Delaware Tribe of Indians!■

## Wellness Committee Project

Bonnie Jo Griffith

Co-Chair, Wellness Committee

**A**t the October 7 Delaware Tribal Council meeting, a Wellness Committee was formed. Jenifer Pechonick and I will co-chair this new offering from our tribe. We will be looking at programs to inform, educate and motivate our tribal members and their families to live a healthier life.

Presently we are looking at having nutritionists come in periodically and help us with more diabetic-friendly, heart-healthy, and weight-conscious diets.

We also hope to start a walking group that will get participants acclimated gradually to being able to walk at least one mile a day. Hopefully some will take this program even farther, and walk several miles a day!

Another program in the works is a "Choose to Lose" weight

loss competition. The program will be a voluntary effort and participants will pay a nominal enrollment fee. At the end of the program the person with the largest percentage of weight loss will be declared the winner and will receive 75% of the money paid for participation. The 25% remaining money will be invested in a new wellness program.

The details for these programs should be finalized by mid-February. All information will be on the tribal we site as soon as it is complete. All Delawares are encouraged to join in, as well as their families.

Should anyone have suggestions are questions, please contact Jenifer at 918-214-6872 or me at 918-331-3805.■

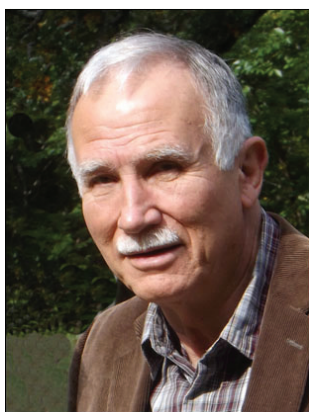
## Report on the Lenape Language Preservation Project

Jim Rementer

### What's New

We are happy to announce that once again we have been funded for the Lenape Language Dictionary Project. We have again received a DEL (Documenting Endangered Languages) grant from the National Science Foundation, effective September 15, 2013. This grant will enable us to continue making improvements to the Lenape Talking Dictionary.

A new person on our team is Dr. Grant Leneaux who is a Delaware tribal member from the Lenno family and a retired professor of German at the University of Nevada. He will assist the project by helping with translations for early Lenape dictionaries and wordlists which were written in German by Moravian missionaries in the 1700's. Raymond Whritenour who has studied Moravian writings about the Delaware language for over thirty years will also act as a consultant to the project.



Dr. Grant Leneaux

### Project History

In 2002 the Lenape Language Preservation Project received a grant from the National Science Foundation to produce a dictionary database of Lenape. Much of the funding went to digitizing and preserving our existing audiotapes made in past years

with native speakers of Lenape. The Dictionary first went online, in October 2005, and was officially online in February 2006. Added under our last grant were Stories in Lenape which can be played line-by-line. At the present time there are 24 stories, 3 hymns, 1 Christmas carol, and 2 "fun songs" to listen to and learn from.

On the top line click on the word "Stories" and you will be taken to a list of them. You can click on the red speaker icons to hear the titles of the stories. To hear the entire story click on the word "View" next to the name of the story. You will see the story written in short phrases or sentences in Lenape with a free English translation under it. To go directly to the stories go here: [www.talk-lenape.org/stories.php](http://www.talk-lenape.org/stories.php). We will be adding more stories as time permits.

### Additional Information

The Talking Dictionary is a work in progress, and at present we have 15,500 Lenape words with many more to add. Of these

over 6,500 have sound files, and 1,700 have sample sentences. We continue to convert audiotapes of Lenape speakers to digital format, from which we extract the Lenape words. These are then entered into the Dictionary and become immediately available on the Internet.

We hope before too long to find funding to have the entire database rewritten in a more up-to-date computer programming language.

We would appreciate your comments on the Lenape Talking Dictionary. We will continue adding to the Grammar and Lessons sections so you can start learning how to construct sentences in Lenape. We hope you will find this useful as a learning tool. Go to [www.talk-lenape.org](http://www.talk-lenape.org). It is now up to you, the Lenape people who want to learn the language of your ancestors, to make good use of this material the Lenape elders left for your benefit. ■

The screenshot shows the 'Lenape Talking Dictionary' website. At the top, there is a navigation bar with links: Home | Introduction | Spelling | Grammar | Lessons | Sentences | Stories | Contact Us. Below this is a section titled 'Lenape Stories'. It lists several stories with their Lenape titles, English titles, and authors. For example, the first story is 'Wáni Lënape Elixsit' (The Language of the Delawares) told by James C. Webber (1877 - 1950). Other stories include 'Moni Ta Nēni' (That Is Money) and 'Na Lēnu Ók Nēl Mwekaneyēma' (The Man and His Dog).

The Stories page of the Lenape Talking Dictionary

**Check the tribal web site for your free downloadable 2014 Delaware calendar!**

## Learn Your Lenape!

Jim Rementer

### Lenape Tahkokën (Fall) Poem

Mèchi tahkokëñemihëna,  
We are already experiencing Autumn,  
Ok yukwe thapànemihëna,  
And now we are having cool weather,  
Alëmi xu pënipahikëleyok,  
The leaves will begin to fall from the trees,  
Xuniti nànkahchuwàk Lënapeyok.  
Soon the Delawares will shiver from the cold.

### Winter Poem

Yukwe mèchi luwànemihëna,  
Now we are experiencing winter,  
Ok yukwe nkàski athiluhëhëna.  
And now we can tell the wintertime stories.  
Wàni Lënape xu tupànuxweyok,  
The Delawares will walk in the frost,  
Ok xuniti nèki Chëlilisàk ktëkiyok.  
And soon the Snowbirds (Juncos) will return.

## Needed! Foster and Adoptive Parents

### DELAWARE TRIBAL SOCIAL SERVICES DEPARTMENT

All children need a loving touch, kind words, safety, security, and a family. These aren't optional in a child's life. These are things that are needed for healthy development of children. These things make the difference between a life of success and a life of struggle.

That's what you can do as a Foster/Adoptive Parent for Delaware Children who, by no fault of their own, are in out-of-home placements. Did you ever wonder why somebody didn't do something about that? Then you realized that you are that somebody! You can make the difference in the lives of Delaware Children. The Delaware Tribal Social Services Department is recruiting foster parents for placement of Delaware children who have been removed from their parents, family member or caregiver for any number of reasons. Examples of these are substance abuse, abuse and neglect, domestic violence and a parent's inability to handle the stressors of being a parent.

Contact our Social Services Manager, Lacey Harris, for more information on how you can make a positive difference in the lives of Delaware children (918-337-6590, or [lharris@delawaretribe.org](mailto:lharris@delawaretribe.org)).

The mission at Delaware Tribal Social Services is to protect children from abuse and neglect while strengthening and preserving families. However, without the help of people like you, Delaware Tribal members, and other Native Americans, these children often end up in the homes of complete strangers, leaving behind relatives, culture, and heritage. ■

## Safeguarding Old Delaware Settlements in the Delaware Water Gap

Delaware Tribe Historic Preservation Office

Gregory Brown

The staff of the Historic Preservation Office have recently returned from two trips to the East Coast to address cultural resources in the Delaware Water Gap National Recreation Area, on the border between New Jersey and Pennsylvania.

The DTHPO has been working with the National Park Service since January 2012 to help manage potential damage from the construction of a 500kV power transmission line. Part of that work has involved “monitoring” of construction activities in areas where Lenape/Munsee archaeological sites may be disturbed.

In September 2013 Language Director Jim Rementer spent a week on this task, and in November Tribal Archaeologist Greg Brown continued this work (the other federally-recognized Delaware tribes, Delaware Nation and the Stockbridge Munsee Community, are also participating in the monitoring).

Long-term benefits of this work will be collaborations with historians and archaeologists studying Delaware sites, enhanced we hope by new electronic video conferencing, and possibly a series of educational programs that will benefit not only people in New Jersey and Penn-

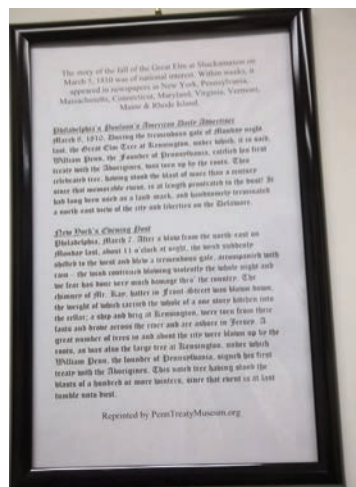


Jim Rementer with National Park Service's Jennifer Palmer and old friend of the tribe David Oestreicher.

sylvia but also the Delaware people living in Oklahoma and Kansas.

While on the East Coast, DTHPO staff also continued our ongoing NAGPRA work aimed at repatriating and reburying over 150 Delaware ancestors from Pennsylvania and New Jersey. These projects will be reported upon as work progresses. ■

## From the Tribal Archives



## Tribal Archives

Anita Mathis

Hè, Tribal Members, Friends & Family

It looks like fall has fallen and winter is upon us. The Archives are growing, as is the Gift Shop. Since the last newsletter we have received the many wonderful artifacts back from the Ah-Tah-Thi-Ki Museum in Florida (see page 24). This is apparently the largest collection of artifacts created by the last “Big House” generation known to be in existence.

Hopefully before long we will have many of the artifacts on display throughout our Tribal headquarters in both Bartlesville and Kansas.

Stop by and check out all that is new and offered in the Library, Archives & Gift shop. The Library received a Libri Grant and we will be adding some wonderful children's books to our library. And remember we have computer workstations so that you can view the full richness of the Archives.

As always please bring in your pictures and documents to be copied and added to our Archives to preserve and share with our future generations. Wanishi ■

## Contact Information Change Form

Name: \_\_\_\_\_

Address: \_\_\_\_\_

City: \_\_\_\_\_

State: \_\_\_\_\_ Zip: \_\_\_\_\_

Others Affected: \_\_\_\_\_

To have a name changed on the tribal roll, send proper documentation, such as a legal document, stating the change (examples: marriage license, adoption papers, divorce papers, etc.). Be sure to include your previous name or names since that will be the way it is listed on the roll. Including Tribal Registration number is helpful, but not required.

Please include others in your household who are affected by this contact info change, including children, so that their records can be updated. Thank you!

Send completed form to:

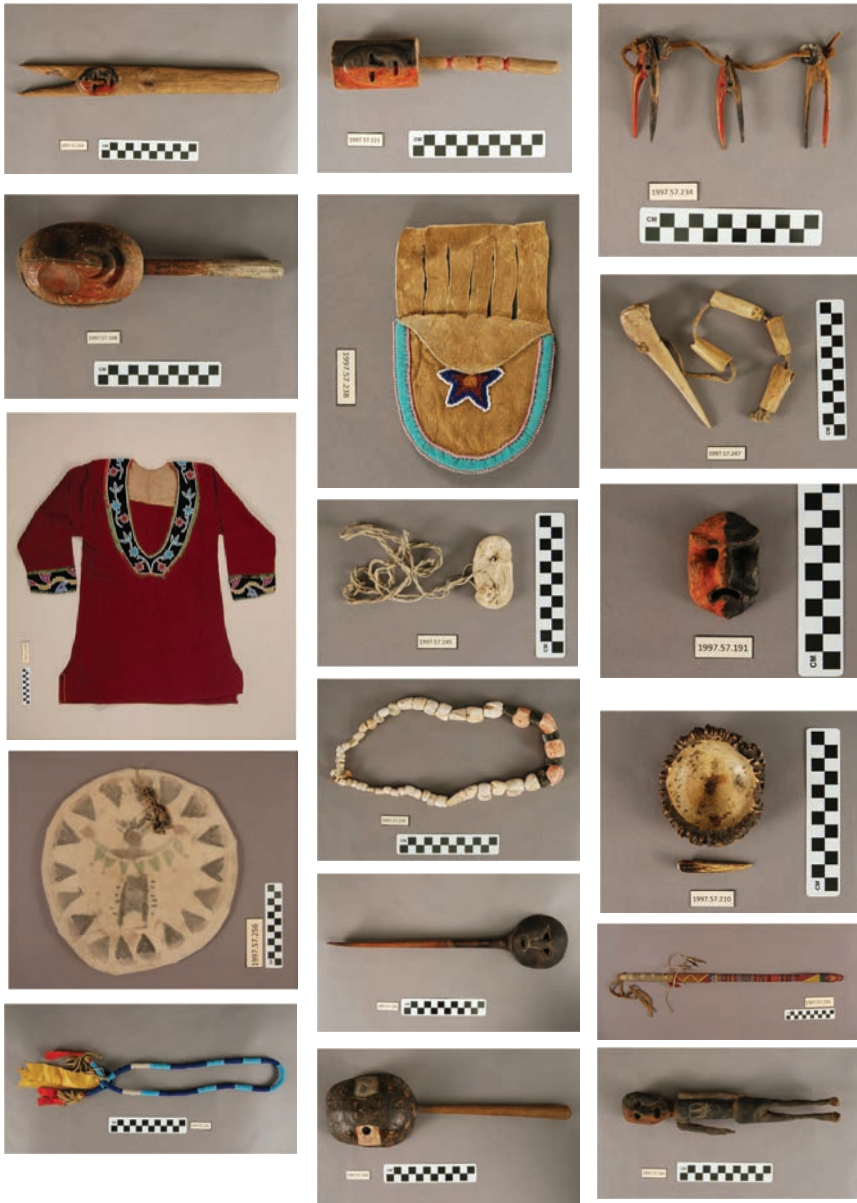
**Delaware Tribe of Indians**  
170 N.E. Barbara  
Bartlesville, OK 74006

## The Frank G. Speck Collection Delaware Tribe of Indians Tribal Museum

The Delaware Tribe of Indians has recently received a donation of over 100 items from the Frank G. Speck Collection, formerly housed at the **Ah-Tah-Thi-Ki Museum** at Big Cypress Seminole Indian Reservation, Clewiston, FL.

Frank Gouldsmith Speck (1881–1950) was an American anthropologist and professor at the University of Pennsylvania. He worked with the Delaware on several important ethnographic projects, and during his studies he worked collaboratively with several Delaware craftsman, which included Fred Washington and later Reuben Wilson, on the production of traditional Delaware crafts as well as replicas of objects associated with the Delaware Big House and other ceremonies. Through this collaboration, Speck acquired many Delaware items from different artisans for his own collection and these items were later donated to many museums in the Delaware Valley region such as the Penn Museum and the State Museums of Pennsylvania and New Jersey.

According to the Ah-Tah-Thi-Ki Museum, this collection was purchased from a collector who said that he bought it from Frank Speck's grandson.



*"Your Total Solution for Medical  
Equipment and Supplies"*

American Indian Woman Owned & Operated

We carry a wide range of products  
and equipment for:

- Home Medical Equipment
  - Mobility
  - Oxygen Therapy
  - Bariatric Needs
  - Support Surfaces/  
Wound Care
- Other Services Include:**
- Non Emergency Transportation
  - MRI Imaging (Financing Available)
  - MRI Design Build
  - MRI Mobile Unit

1400 SW Expressway  
Broken Arrow, OK 74012  
(918) 250-7051  
[www.TotalCareSolutions.biz](http://www.TotalCareSolutions.biz)

