

DELAWARE INDIAN NEWS

THE OFFICIAL PUBLICATION OF THE DELAWARE TRIBE OF INDIANS

Lēnapeí Pampil

October 2021 ▪ Volume 44, Issue No. IV

From the Desk of Chief Brad KillsCrow

Brad KillsCrow, Chief

Greetings, I write this article with continued sadness over the loss of our late Chief Chester “Chet” Brooks. My condolences to the Brooks family and I ask for your continued prayers as the family and the Delaware people mourn our loss. When I was elected to the Council, Chief Brooks became my mentor. He was a wealth of knowledge concerning not only our tribal government but the history of our people. The best advice he ever gave me was to have big ears and a thick skin. Although he never explained exactly what he meant, I soon learned that to be a successful tribal leader first you have to listen to ALL the people and consider their views even if you don’t agree with them. And second, you must be able to take criticism and sometimes blame even when you have no control over the situation.

When I ran for Tribal Council, I never thought I would be in the position of assuming the role of Chief, especially under these circumstances. Last November, the Tribal Council elected me Assistant Chief and I began taking an even more active role in the day-to-day operations of the tribal government. As the Chief’s health declined, I stepped in to represent him when needed as the Tribe moved forward with economic development, cul-

tural preservation, and fighting Covid. Every day I draw upon my experience from my days in the United States Navy, my service as a police officer in Ponca City, my work with the Tonkawa and Kaw Tribes, and most importantly, my dedication to the Delaware Tribe. Together with the support of my wife and our three sons, my extended family, friends, and the Delaware people, I feel I am ready to take on the challenge of being Chief. So, as we move forward together through this time of transition, I ask for your patience encouragement, and prayers. My goal is to continue the legacy left by Chief Brooks and past generations of our Delaware ancestors who persevered and kept our Tribe and its culture strong. ■



SPECIAL NOTICE TO TRIBAL MEMBERS



**General Council set for
Saturday, November 13th, 2021
5100 Tuxedo Blvd
Bartlesville OK 74006**



From the Desk of Tribal Operations Manager Jimmie Johnson

Jimmie Johnson, Tribal Operations Manager

I hope this finds everyone well. This is my first DIN article since assuming the role of Tribal Operations Manager in January of 2021. For those that do not know me I have been employed with the Delaware Tribe of Indians since 2011. I have served as the Environmental Program Director, and I was also involved in the formation of our Tribal 8(a) Company Tahkox e2 LLC. I have 20 years of experience working in City, County, and Tribal Governments.

But enough about me. We've been very busy here since I started this new position. Since January we have hired 29 new employees including our Controller, Environmental Program Director, Childcare Director, Childcare Staff, additional maintenance staff, enrollment staff, and additions to Family and Children Services. Although we still have a few positions open and are looking to create

a few more we are as close to being fully staffed as we have been in years. We are building a great team here and are looking forward to making good things happen for our people.

In recent months we have been super busy with the Covid-19 and Childcare Disbursements that the Tribal Council made to the tribal members. Our Enrollment department has seen a massive increase in the number of new tribal member applications, replacement card requests and questions in general. Our Enrollment Department is currently only staffed with 2 employees so please bear with them as they try to serve every tribal member equally. In addition to the large increase in numbers our card printers completely went out. While we tried to order new card printers immediately, a product shortage has caused this to be delayed and the new printers be on "back-order" for several months. Our Enrollment department can still provide proof of membership for the ap-

plications for funds, so an actual membership card is not needed.

We have all been deeply saddened by the recent loss of Chief Chet Brooks. Chief Brooks always led our tribe with a fair and honest hand. We will greatly miss his leadership and most of all the wealth of knowledge that he had of our government, and our history. Although we mourn his loss we celebrate his life and his years of service to our people.

Over the past 10 years I have seen quite a bit of growth in our tribe and have seen our standing as a tribe become increasingly elevated due to the hard work of all of our leaders. I believe we have a bright future as a people and I appreciate being able to be a part of it.

Wanishi
Jimmie Johnson
Tribal Operations Manager ■

I Am Bearsun Visits the Delaware Tribe

I Am Bearsun came to the tribe Friday the 17th of September on his way to New York. Cece Biggoose our Housing Director picked up Bearsun and his sidekick Kia on Friday to visit the Delaware Tribe of Indians campus in Bartlesville OK.

He came and took photos with the kiddos at the Lenape Early Learning Center and everyone had a great time. We extended our hospitality and put them up for the night and fed them breakfast.

Chief KillsCrow donated to his cause which you can see on his instagram page. You can follow him on Facebook or Instagram on his journey to New York.

The Delaware Tribe of Indians wishes to thank Bearsun for coming and blessing us with his presence and making the kiddos smile.

Safe travels Bearsun and Kia. We love you. ■



Lenape Language Report

Jim Rementer, Lenape Language Project Director

What's New: The Lenape Talking Dictionary was funded by the National Science Foundation starting on June 1, 2020 for a year and a half.

Working on Language Preservation: The photo is of a visit to the Delaware Nation to discuss language work. From here were Nora and Louise Dean, Lucy Blalock, and Jim Rementer in 1975.

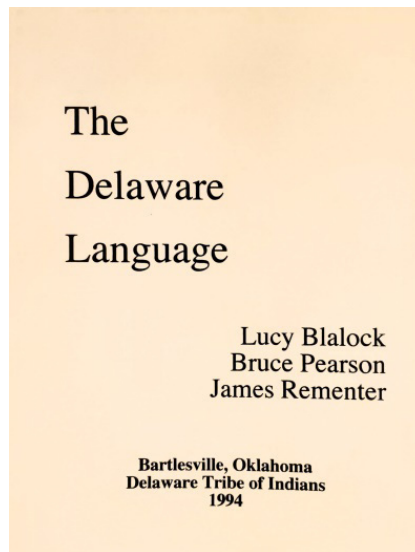


Bruce's focus was on the Delaware Indian language and he worked throughout his academic career on Delaware and Shawnee, both members of the Algonquian language family. His obituary is found elsewhere in this issue of Delaware Indian News.



Passing: As shown elsewhere in the Delaware Indian News we have lost Chief Chet Brooks. It was always good to hear Chet when he was called upon to say a prayer before an event he would do so partly in Lenape. One source he used to work on the prayers was Lesson 12 in the Lessons section of the Talking Dictionary to be found here: <https://www.talk-lenape.org/lessons?id=15>.

Passing: Bruce Pearson, the linguist who worked extensively on the Lenape language, left this life on July 14, 2021. Here is Bruce (in yellow shirt) and Nora Dean visiting with Bessie and Willie Snake speakers from Delaware Nation. Photo by Jim Rementer.



What's Newest: We continue to add to the Lenape Names lists. The lists contain the Lenape words, images, the English translations, and links back to the sound files in the Lenape Talking Dictionary. These are found on the tribal website:

<http://delawaretribe.org/blog/2013/06/26/language/>.

Several new lists were just posted and this one is Lenape Names for Flowing Water.

<http://delawaretribe.org/wp-content/uploads/Lenape-Names-for-Flowing-Water.pdf>

This list is names for water that is not flowing:

<http://delawaretribe.org/wp-content/uploads/Lenape-Names-for-other-terms-for-water.pdf>

We have also added names for parts of the head:

<http://delawaretribe.org/wp-content/uploads/Lenape-Names-for-the-Head.pdf>

Another new list is about parts of hands:

<http://delawaretribe.org/wp-content/uploads/Lenape-Names-for-the-Hand.pdf>

Revived: We have again started doing the Lenape Word-a-Day calendars. The downloadable calendar is posted on the Tribal website with a calendar for that month, and will continue to be posted at the beginning of each month. There are sound files for each of these words which can be found in the Lenape Talking Dictionary: <https://www.talk-lenape.org/>.



LENAPE SEPTEMBER 2021 WORDS						
SUNDAY	MONDAY	TUESDAY	WEDNESDAY	THURSDAY	FRIDAY	SATURDAY
Kichi Tahkokën Real Falltime			kishux sun/moon	piskewëni kishux moon	alënkw star	alënkok stars
ilaonëtu comet	kishahtëk northern lights	kùmhökw cloud	mushhàkw sky	mushhakòt clear sky	tùkwsì kishux full moon	wëski kishux new moon
wikhe kishux ring around the moon	wipëkw sunbeam	wipëko sunbeams	wsika sunset	opitëmakàn milky way	mënëkòn rainbow	kwtai kishux eclipse of sun/moon
òk and	nishinxke 20	nishinxke òk kwëti 21	nishinxke òk nisha 22	nishinxke òk naxa 23	nishinxke òk newa 24	nishinxke òk palenàxk 25
nishinxke òk kwëtash 26	nishinxke òk nishash 27	nishinxke òk xash 28	nishinxke òk pëshkunk 29	xintxke 30	Listen to the Lenape words at www.talk-lenape.org	

LENAPE OCTOBER 2021 WORDS						
SUNDAY	MONDAY	TUESDAY	WEDNESDAY	THURSDAY	FRIDAY	SATURDAY
Pukwsit Kishux Broken Moon					òpe it is white	òpeyo they are white
òpsu he is white	òpsuwàk they are white	òpinakòt it looks white	òpinakwsu he looks white	màxke it is red	màxkeyo they are red	màxksu he is red
màxksuwàk they are red	màxkinakòt it looks red	màxkinakwsu he looks red	sëke it is black	sëkeyo they are black	sëksu he is black	sëksuwàk they are black
sëkinakòt it looks black	sëkinakwsu he looks black	aone it is blue	aoneyo they are blue	aonsu he is blue	aonsuwàk they are blue	aoninakòt it looks blue
aoninakwsu he looks blue	wisae it is yellow	wisaeyo they are yellow	wisawsu he is yellow	wisawsuwàk they are yellow	wisainakòt it looks yellow	wipunkwe it is gray
wipunkwsu he is gray	Listen to the Lenape words at www.talk-lenape.org				compiled by Jim Rementer	

Stories of Our Past—The Remarkable History of the Delaware Tribe

Anita Mathis, Librarian & Archives Manager

Here in the Archives we have many wonderful pictures, documents, and objects of our Ancestors—from the past to the present.

In this article we are going to tell the story of. JAMES HENRY THOMPSON



A full blooded Delaware Indian, Thompson was born near Lawrence, Kan., on Oct. 20, 1867 and came to the Indian Territory when he was one-year-old,

His parents died while he was young and he went to live with an aunt and uncle, Kwetendet and Charlie Barnett on the (forks) “Folks” of the Caney River.

Thompson attended school at the “Quapaw Mission”, a government school located near Miami, where he learned the “3-R’s” and the English language.

The first English words he learned were “Make Fire.”

During his teens he was a jockey, and rode at famous tracks in neighboring states.

Thompson knew many famous outlaws during the early days of Oklahoma, such as the Dalton Boys, Belle Starr, Cherokee Bill and Kate Bender. They often stopped by his home for a visit

and shelter. He also had the dubious honor of dancing with Belle Starr.

Several years later he was, deputized by a U. S. marshal and rode in the posses to apprehend these same people. As a deputy marshal, he had to go to Fort Smith to attend the trials of many lawbreakers and he personally witnessed many hangings. His Delaware name is “Ohellemmitakwsi” which means “The One Who Can Hear From Afar” in translation.

Thompson married Miss Sarah Wilson, daughter of Billy and Louise Wilson, both full-blood Delaware Indians, on June 10, 1901. His wife’s uncle was John Wilson who established the Peyote Church among the Delaware Indians

After their marriage, they established their home near Glen oak on the banks of the Hogshooter Creek where Thompson, (engaged in hunting and farming.

Three children were born to this family and they include Lenora (Nora) Thompson, now residing in Dewey; Edward Thompson, Denver, Colo., and Jesse Thompson who died at the age of sixteen.

Thompson had one grandchild Miss Louise Dean, daughter of Charley and Lenora Dean of Dewey, and one adopted grandson, James Rementer who studied the Delaware language under the tutorship of the Dewey pioneer.

Mr. and Mrs. Thompson lived on their homestead until her death, and then he made his home with his daughter, Nora at

Dewey. ;

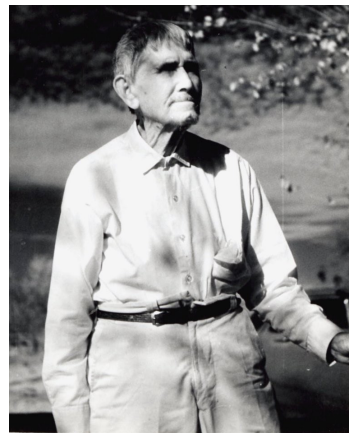
Thompson claims he has never used alcohol or tobacco except in a peace pipe with neighboring tribe of Indian when they were at odds with the Delawares.

Thompson attended the Ghirigwikaun, a Delaware tribal church, but was later baptize into the Catholic Church. His advice and thoughts on his birthday are:

His advice and thoughts on his birthday are.

“Ndite kettemmaksitshik au wennik kiluna elli mata kninelatemuwennen lenellegheokaiy enna ak hokkaiyenna. Kishel: emmukong knihellalkuna, shukw wemmi auwen kwutshi a wul langunsu ghsannariike.”

Which means when translated, I believe that we are all pitiful beings, for we own neither our lives nor our bodies. These are the Creator’s. Even so we should try to do good among our fellow men. ■



Delaware Tribe Cultural Presentations In The Homeland

Tribal members Curtis Zunigha (Cultural Center Director), Erica Magee, Riley Magee, and Cayla Magee traveled to Paterson Falls National Historic Park in New Jersey to present three public programs on July 31 and August 1. The presentation included a summary of our tribal history, culture, language, songs, and dances while wearing traditional Lenape clothing. The park staff has requested another visit by the Delaware Tribe in the summer of 2022. ■





LENAPE/DELAWARE HERITAGE DAYS

The Delaware Tribe of Indians is a federally-recognized tribe based in Bartlesville, Oklahoma. They are the modern day descendants of the Lenape, the original Indigenous people of the Passaic River Valley. Join members of the tribe for a weekend of exploring the history and traditional practices of the Lenape. Welcome them as they perform Lenape music, dances, and cultural practices of the tribe.

Free Family Friendly Event!

PATTERSON GREAT FALLS NATIONAL HISTORICAL PARK <small>72 MICHIGAN AVENUE, LYNDEN, PATTERSON, NJ 07651</small>	 SATURDAY JULY 31 <small>10:00AM - 2:00PM</small> SUNDAY AUGUST 1 <small>12:00PM</small> <small>Event will take place rain or shine.</small>
--	--

Consent to one unreserved program/photograph will require a signed consent form from the Delaware Tribe of Indians to see their language. Contact: www.delawaretribe.org for more information. Program subject to change without notice.



Updates from the Delaware Tribe Historic Preservation Office

Introduction

The mission of the Delaware Tribe Historic Preservation Office (DTHPO) is to protect and preserve the cultural heritage of the DELAWARE TRIBE OF INDIANS, i.e., to preserve all historic evidence of the culture, migration, settlement, and occupation in North America of the Lenape people, including the diaspora of the Delaware tribal nation, from prehistoric times to the present. This includes the protection and repatriation of our Ancestors.

The principal duties of the DTHPO are the review of undertakings by federal and state agencies and institutions and engaging in government-to-government consultation with such agencies and institutions, pursuant to the National Environmental Policy Act (NEPA), the National Historic Preservation Act (NHPA), the Archaeological Resources Protection Act (ARPA), the Native American Graves Protection and Repatriation Act (NAGPRA), and the protection of our sacred sites and landscapes pursuant to the American Indian Religious Freedom Act (AIRFA) and Executive Order 13007. The DTHPO reviews all federal undertakings that occur within the tribe's current jurisdiction and acknowledged aboriginal lands, and any other locations that may have religious, cultural, or historic significance to the DELAWARE TRIBE OF INDIANS.

This report is intended to provide CHIEF and COUNCIL with a brief overview of the activities and accomplishments of the DTHPO over the last month.

DTHPO Organization and Personnel Changes

As of August 16, 2021, LARRY HEADY was appointed the new Tribal Historic Preservation Officer for the Delaware Tribe of Indians. Larry is a tribal member who previously served the DTHPO in a part-time capacity since 2017, specializing in federal Indian Law and policy, aboriginal rights and trust doctrine.

SUSAN BACHOR now serves as Deputy THPO and Tribal Archaeologist from our office at East Stroudsburg University of Pennsylvania

(ESU). Additionally, on September 8 per our agreement with ESU, EMILY SERPICO began her internship with the DTHPO. Emily will be handling the majority of our Section 106 FCC Tower Construction Notification System (TCNS) workload.

On August 31, 2021, THPO LARRY HEADY submitted a comprehensive draft organizational plan for the DTHPO to CHIEF KILLSCROW and Tribal Operations Manager JIMMIE JOHNSON for review. Brad and Jimmie will be meeting with Larry and Susan later this month to review the organizational plan.

Postponement of Abbot Farm Reburial

On August 24, tribal leadership of the five Lenape descendant tribes (DELAWARE NATION, DELAWARE TRIBE OF INDIANS, STOCKBRIDGE MUNSEE COMMUNITY, DELAWARE NATION at MORAVIANTOWN, and MUNSEE-DELAWARE NATION of Ontario) elected to temporarily postpone our "Abbott Farm" Ancestor reburial at Pennsbury Manor in the Delaware River Valley due to the COVID-19 Delta variant resurgence across the country. The DTHPO, in partnership with the other sister tribes, have secured the Ancestors in their current storage institutions until tribal leadership declares it safe to proceed with the reburial. This Ancestor reburial was originally scheduled for early October 2021 and would have been the largest Ancestor reburial to date, reinterring over 200 individuals.

Additionally, the Princeton University Reburial also scheduled for October 2021, has been temporarily postponed.

Borough of Milford PA Exhibit Opening Still On!

The Borough of Milford Pennsylvania is still planning the opening of its Lenape museum exhibit on Wednesday, October 6, 2021. This event will begin with a symposium panel of representatives of all three Lenape descendant tribes (DELAWARE NATION, DELAWARE TRIBE OF INDIANS, STOCKBRIDGE MUNSEE COMMUNITY), the exhibit opening

at the Columns Museum, followed by a reception.

The Lenape Exhibit is composed of interpretive panels designed by THPO LARRY HEADY and his nephew MICHAEL FRANDY and tells the story of the Indigenous peoples of Eastern Pennsylvania and the Delaware Water Gap from ancient times to now.

Ethnographic Study at Delaware Water Gap National Recreation Area

On September 8, 2021, the DELAWARE TRIBE OF INDIANS executed a sole source contract with the National Park Service, Delaware Water Gap NRA (NPS-DEWA) in the amount of \$119,922.44 to support an ethnographic study at Delaware Water Gap National Recreation Area. This will involve all three U.S. Lenape descendant tribes ((DELAWARE NATION, DELAWARE TRIBE OF INDIANS, STOCKBRIDGE MUNSEE COMMUNITY). The three tribes met and decided that the Delaware Tribe will serve as the contractor for the study and the other two tribes will serve as principal consultants. A scope of work was drafted and reviewed by our Office, accepted by the NPS and the contract is now signed.

Reburial MOU with the U.S. Fish & Wildlife Service

On August 11, representatives of the DTHPO met with the US Fish & Wildlife Service (USFWS) to complete negotiations on a bilateral Memorandum of Understanding which will secure to the DELAWARE TRIBE OF INDIANS several secure reburial sites within the Lenape National Wildlife Refuge Complex. A National Wildlife Refuge Complex is an administrative grouping of two or more refuges, wildlife management areas or other refuge conservation areas that are primarily managed from a central office location. Refuges are grouped into a complex structure because they occur in a similar ecological region, such as a watershed or specific habitat type, and have a related purpose and management needs. Typically, a project leader or complex manager oversees the gen-

eral management of all refuges within the complex and refuge managers are responsible for operations at specific refuges. Supporting staff, composed of administrative, law enforcement, refuge manager, biological, fire, visitor services, and maintenance professionals, are centrally located and support all refuges within the complex.

The Lenape National Wildlife Refuge Complex is located entirely within the Lënapehòkink homelands and is comprised of the CHERRY VALLEY NATIONAL WILDLIFE REFUGE (PA), the GREAT SWAMP NATIONAL WILDLIFE REFUGE (NJ), the SHAWANGUNK GRASSLANDS NATIONAL WILDLIFE REFUGE (NY), and the WALLKILL RIVER NATIONAL WILDLIFE REFUGE (NY).

New Nagpra Consultations

Representatives of the DTHPO began consulting with TYLER SWINNEY of the CINCINNATI MUSEUM CENTER (CMC) regarding the inventory, identification and repatriation of approximately 100 Delaware cultural items or "objects of cultural patrimony," including textiles. Objects of cultural patrimony are items having ongoing historical, traditional, or cultural importance central to the Indian tribe rather than property owned by an individual tribal or organization member. These objects are of such central importance that they may not be alienated, appropriated, or conveyed by any individual tribal or organization member. Such objects must have been considered inalienable by the culturally affiliated Indian tribe at the time the object was separated from the group. Objects of cultural patrimony include items such as Zuni War Gods, the Confederacy Wampum Belts of the Iroquois, and other objects of similar character and significance to the Indian tribe as a whole.

Ohio Consultation Protocols

Representatives of the DTHPO are participating in the development of standard consultation protocols for the State of Ohio. After reviewing the work products of the tribal delegates to this effort, the Delaware Tribe

recommends for consideration the policy and protocols developed by the DTHPO and adopted by TRIBAL COUNCIL RESOLUTION 2019-24.

Metroparks Fore Site Repatriation

Representatives of the DTHPO are participating in the METROPARKS repatriation consultation of the FORE SITE Ancestors, an inadvertent discovery in Central Ohio. The MANNIK & SMITH GROUP, INC. is representing the Metroparks and is involving all of the Greenville Treaty tribes in this consultation, which includes the development of an Inadvertent Discovery Protocol for the participants and a permanently established secure reburial location. The Miami Nation of Oklahoma is taking the lead on this repatriation and reburial of the Ancestors. The DTHPO is participating in a supportive role.

DTHPO Grants

Our 2018 NAGPRA grant is being extended for any year because of COVID and the change in personnel. This postponement will give the Historic Preservation Office time to ensure all obligations have been completed and to prepare the final report. This repatriation grant was for travel for the three U.S. Lenape descendant tribes ((DELAWARE NATION, DELAWARE TRIBE OF INDIANS, STOCKBRIDGE MUNSEE COMMUNITY) to visit 8 museums.

Historic Preservation was awarded the 2021 NAGPRA Grant - Repatriation of the Field Museum's and R.S. Peabody's Abbott Farm Collection (\$15,000). These funds are to be used for travel associated with the Abbott Farm reburial.

Our 2018 HPF THG - DELAWARE TRIBE OF INDIANS, COLLABORATIVE ARCHAEOLOGICAL SURVEY OF DELAWARE SACRED SITES IN NORTHEASTERN OKLAHOMA grant has been extended for another year because of COVID. Our last step for this grant is to provide cemetery use maps and collecting histories from elders and community. ■

Community Services Programs

If you have questions, please contact the Tribal Office at 918-337-6590.

The Community Services committee has reinstated programs previously suspended and revised or kept the same, dollar amount of benefits that were previously reduced. Based on the anticipated availability of funding, applications for the following programs are being accepted.

Burial Program: \$750.00 Burial assistance for Delaware

Tribal members. The family may apply for the funds to be used for expenses that are most beneficial to the family (i.e., funeral services, family meals, wake, grave markers, etc.) Documentation required to establish membership and proof of death.

Elder Prescriptions: Prescription medication assistance to Delaware Elders age 60 and over for Pharmacy and related costs. Elders may receive assistance up to \$75.00 per month not to exceed \$900.00 per calendar year. Funds may be disbursed to

vendors or reimburse applicants with proper documents and receipts.

Medical Assistance: Assistance to pay medical bills, including but not limited to out of pocket medical expenses, medical equipment (purchase or rental), Home health care, pharmacy, etc. not to exceed \$240.00 Payment for services will be made to provider or Tribal member if paid receipts are included with other required documentation.

Emergency Assistance & Emergency Travel Assistance: Emergency assistance to Delaware Tribal members.

Funds are to be used for emergency situations as requested by Tribal member. Applicants must utilize other community resources if available. Emergency Assistance up to \$240.00 and Emergency Transportation up to \$200.00 Funds will be determined and disbursed by the Community Service committee on a case-by-case basis.

Rental Assistance: Available up to \$240 based on same criteria as emergency application and determined on a case-by-case basis.

Dental Assistance: Reinstated to \$300. Provides assistance for

dental services including tooth repair, fillings, dentures or emergency services. Income verification required.

Elder Optical: Provides assistance for optical services to Delaware Elders age 60 and over. Funds may be used for services, including glasses, exams or related costs.

Student Optical: Provides assistance to students enrolled in grades K-12, colleges or universities or vocational technical schools. Based on age of applicant, proof of enrollment may be required. ■

Recycling Update

With Tulsa Recycling still down due to a fire they suffered earlier this year, our recycling is still shut down for the time being. We reached out to several other facilities. With no luck unfortunately.

We are able to recycle E-waste (Electrical Waste). E-Waste is defined as televisions, computers, laptops, printers, cables, VCRs, cell phones, copiers, fax machines, stereos, and electronic games. If this goes into a landfill, its toxic components go into our water table.

You can recycle E-waste at the Enrollment/Wellness Building while we are shut down to the public due to Covid-19. Please leave E-waste in the marked area by the front door. Once we're back open. There is a designated area in the building for E-Waste. Please do your part to protect our environment.

For more information regarding recycling. Please contact our EPA Director, Denny Fisher. He can be reached at efisher@delawaretribe.org. ■



To Contact Us

Bartlesville Tribal Offices:
5100 Tuxedo Blvd
Bartlesville, OK 74006
918-337-6590

Office Hours:
8:00 a.m.–5:00 p.m. M-F

Chelsea Housing Office:
6 Northview Dr.
Chelsea, OK
918-789-2525

Caney Office:
601 High Street
Caney, KS 67333
620-879-2189

Tribal Web Site:
www.delawaretribe.org

General Email:
tribe@delawaretribe.org

Education Committee Assistance/Programs

Take advantage of these programs; they are here for you! If you have any questions, please contact the Tribal Office at 918-337-6590.

Trust Fund Higher Education School Scholarship: Delaware Tribal members attending college are eligible to apply. Currently, full-time students may apply for \$600 per semester for up to eight semesters, and part-time students may apply for \$300 per semester up to 16 semesters. Semesters do not have to be consecutive. Applicants must submit all required documentation, including official transcripts and enrollment verification from the college or university. Students must maintain a 2.7 GPA (grade point average) in the last semester attended (high school, college, etc.) Students must reapply at the end of each semester. Award is made directly to student to insure that it does not interfere with their financial aid package from the institution. Scholarships will not be awarded for the summer semester. Scholarships are subject to funding availability.

Fall scholarship applications will be accepted from June 1 through July 31, spring from December 1 through February 15.

You can download the applications directly from our web site www.delawaretribe.org. Just go the Services/Programs tab, and then scroll down to

Educational Assistance.

This edition of the DIN includes applications for a new Education Assistance Program for tribal members. Please note that there is one application for children Pre-K through 5th grade (found on page 10) and another for children in 6th through 12th grade (found on page 11). These applications may also be found online at <http://delawaretribe.org/services-and-programs/educational-assistance>. On Thursday and Friday, October 7th and 8th Education Committee Chair Sherri Choteau will be in person at the tribal campus handing out gift cards for completed applications only. Applications can also be turned in by mailing to the tribal offices at 5100 Tuxedo Blvd., Bartlesville, OK 74006. ■



Obituaries

Janice Elizabeth Leneaux Alexander



**January 29, 1938 –
June 20, 2021**

Janice Elizabeth Leneaux Alexander died in Tulsa, OK on 6/20/21, surrounded, as she was through life, by family and friends. Janice was born in Tulsa on Jan. 29, 1938 and she is the granddaughter of Grant Leno (Delaware Roll #600). She was honored to have come to know the revered Lenape elder and name giver Nora Thompson Dean, Touching Leaves Lady. Through this friendship, she was able to receive her Lenape name at a ceremony conducted by the former Chief, Dee Ketchum in 2014. Her name is Wichipahkinao, which translates as "She who appears with the Leaves." Thus, when the leaves show forth each spring, we will feel her presence.

Janice went to Will Rogers High in Tulsa and later attended art classes at Tulsa University. Whatever Janice put her hand to was touched by the mark of an artistic imagination. Her Lenape name, Wichipahkinao, expresses her deep-rooted ties to the creative forces of nature and imbued her artistic sensibility, whether it be in the serving of a meal, the arrangement of her home and garden, or on one of her lovely canvases. Her sense of shape and color opened the eyes and hearts of many to the

beauties of the world around us.

Janice was married to Jack Lee Alexander for 67 years and theirs was a remarkable union. Jack was the perfect partner for her creative side. His own sensibility and talent were the perfect complement to her own. If she put on the colors, he provided the canvas; if she was the architect, he was the engineer.

Janice was predeceased by her son Jack Robert Alexander and is survived by her husband, Jack Lee Alexander. Delaware family survivors are her brother, Grant Francis Leneaux, her niece Juliette Michelle Leneaux, and her nephew Grant Marc Leneaux. She is furthermore survived by numerous nephews and nieces, cousins, and countless friends. Janice will be remembered at a private ceremony to be announced later. ■



Betty Louise Israel



**February 11, 1937 –
June 21, 2021**

Betty Louise Wood Israel passed away with her family by her side on June 21, 2021. She was preceded in death by her parents Jack & Mildred Wood, one brother, Jimmy G. Wood, and her spouse Stansell Israel.

Betty was born in Coffeyville, Kansas and passed away in Oklahoma City, Okla.

She is survived by her daughters Mitzi McAllister and husband Gary, Darla Rissler and husband Paul, sons Kimmett Israel, Stanley Israel, and daughter Jacklyn Israel. She was also survived by her sister Delores Reid and brother Buddy Wood and wife Karen. She left behind 8 grandchildren, 7 great grandchildren, and numerous nieces and nephews.

Those wishing to make memorial gifts may do so to the American Cancer Society. ■



Bruce Leonard Pearson



**April 30, 1932 –
July 14, 2021**

Bruce Pearson, the linguist who worked extensively on the Lenape language, died at St. Mary's Hospital in Rochester, Minnesota on July 14, 2021. He was born on April 30, 1932, in Indianapolis, Indiana. Bruce graduated from Earlham College with a B.A. in 1953 and the college was developing the Conner Prairie Pioneer Settlement.

Bruce focused on his interest in the Delaware Indians. With his study of languages Bruce decided

to pursue a doctoral degree at the University of California at Berkeley. While there he began research on the Delaware language. On completing his degree in 1972, he accepted a faculty position at the University of South Carolina to teach linguistics and other anthropology courses, retiring in 1997 as professor emeritus. He worked throughout his academic career on Delaware and Shawnee, both members of the Algonquian language family. He also did some work on the Wyandot language.

Bruce worked primarily with Nora Dean and Lucy Blalock as the main resource people, and he also worked with Fred Falleaf, Annie Parks, Ollie Anderson, and Fred Washington, as well as some Delaware elders at Delaware Nation. Bruce first came to Oklahoma in 1968 and worked for a month and a half, and the following year he returned for the same length of time. He returned a number of times after that and he had Nora come to his linguistics class at the University of South Carolina in 1975 to work with him and his students.

In 1994 Bruce produced a basic grammar and dictionary of Lenape which was available at the tribal gift shop. He also served as the linguistics advisor for the Lenape Talking Dictionary.

Throughout his life, Bruce was a member of the Religious Society of Friends (Quakers). Bruce is survived by his wife of 32 years, Julia, and several children. ■

Christian A. Zunigha



**December 11, 1956 –
September 8, 2021**

Christian Andrew Zunigha of Allyn, WA, loving husband and father, passed away on September 8, 2021 at the age of 64 after a courageous battle with pancreatic cancer. Christian will be remembered by his love and commitment to family, his global influence as an educator, and the deep human connections he made with all those he encountered.

Christian was born in St. Louis, MO and moved to Izmir, Turkey at a young age. This experience fostered a passion for learning new cultures and languages and a desire to explore the world. He was an enrolled member of the Delaware Tribe of Indians from his father's side and a proud Sicilian from his mother's side. Christian was a natural linguist and studied Anthropology at Northern Arizona University, where he met his future wife Cathi. It was love at first sight and he and Cathi soon started a life of world travel in 1984 when they joined the Peace Corps in the Central African Republic. They spent over 30 years overseas, raising their girls Katie and Connie while teaching in international schools in Saudi Arabia, Bahrain, and the United Arab Emirates.

Christian was a modern renaissance man with a deep appreciation for art, history, philosophy, religion, and the exploration of the human condition. He shared his love of Dalí, Impressionism, the



Obituaries (cont.)

Dutch masters, and Hemingway with his family by taking them all over the world to experience their works and inspirations. He played the Beatles on his guitar, singing love songs to Cathi and his daughters. At one point or another he spoke German, Navajo, Turkish, French, Sango, Greek, and Arabic... though he would be quick to deny his fluency right after having a conversation in said language. He also had a suspiciously strong grasp of Italian, Spanish, Norwe-

gian, and any other language he spent time around.

Christian retired from Saudi Aramco to Allyn, WA in 2016. He had seen the world and knew the Pacific Northwest was a special place. He enjoyed his retirement by continuing to visit new places, enjoying his golf game, watching Mariners baseball, tending his garden, and bird watching with his miniature schnauzer Lucy.

Christian will be deeply missed by his wife of 37 years, Catherine

Cornell Zunigha; two daughters, Catherine JoAnn and Constance Grace Zunigha; brother, Curtis A. Zunigha (Cultural Director for the Delaware Tribe); and sisters Toni Smith and Cynthia Zunigha Carr. He was preceded in death by his parents, Curtis P. and Catherine L. Zunigha.

A private Memorial Service was held on September 25, 2021 at Christ Lutheran Church in Belfair, WA. His family encourages everyone to recognize the subtle signs

of pancreatic cancer and support the Pancreatic Cancer Action Network in his honor to continue efforts for early detection and better treatment. ■



If one of your relatives or close friends has passed, please send us an obituary. We will run it in the next *Delaware Indian News*. Obituaries can be sent to din@delawaretribe.org or to the Tribal Offices.

Please also pass along any birth or death announcements to the Enrollment Office at enrollment@delawaretribe.org. The Community Services Committee has a burial assistance program if you need help. ■

DELAWARE TRIBAL COURT
601 HIGH STREET
CANEY, KS 67333
918-337-6571

DELAWARE TRIBE OF INDIANS
TRIBAL COURT
JUL - 8 2021

FILED

Case No. AMC-2021-001

Judge: Shelli Harris-Ketchum

WILLIAM RAYLEY
Petitioner,
IN THE MATTER OF SES,
A MINOR CHILD

vs.

UNKNOWN
Respondent.

PUBLICATION NOTICE

IN THE MATTER OF:

The Adoption of SES, a minor child, dob 10/15/2013
Born to Kara Cheyenne Scott

TO ALL INTERESTED PERSONS, including but not limited to William Robert Railey and Kara Cheyenne Railey of Skiatook, Oklahoma.

PLEASE TAKE NOTICE that on November 18, 2021 at 1:30 p.m., in the Delaware Tribal Court, located at 601 High Street in Caney, Kansas 67333, a hearing will be conducted to establish the facts herewith to determine if such adoption should be granted.

Witness my hand on this 8th day of July, 2021.


JUDGE OF THE TRIBAL COURT

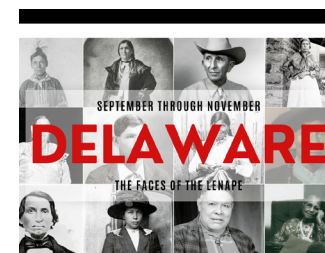
Delaware: The Faces of the Lenape

The new exhibit DELAWARE: THE FACES OF THE LENAPE is on view at the Bartlesville Area History Museum.



Attending the opening on September 16 is (l-r): Chief Brad Killscrow, Language Director Jim Rementer, Betty Keim (BAHM), Housing Director Cece Biggoose, Tribal Archivist Anita Mathis, Tribal Intern Morgan Messimore, and Delaney Williams (BAHM).

On exhibit through the last week of November. The BAHM is on 5th floor of City Hall, 401 S. Johnstone. Hours are Monday – Friday, 8:30 – 4:00. For more information go to www.bartlesvillehistory.com



ON EXHIBIT THROUGH THE LAST WEEK OF
NOVEMBER AT THE BARTLESVILLE AREA
HISTORY MUSEUM
401 S. JOHNSTONE AVE.
5TH FLOOR
MONDAY-FRIDAY 8:30-4:00
WWW.BARTLESVILLEHISTORY.COM

Child Support Services

Noncustodial
Parent Search
Establish Paternity
Establish, Enforce
& Modify Orders
Collection
Disbursement

918.337.6510



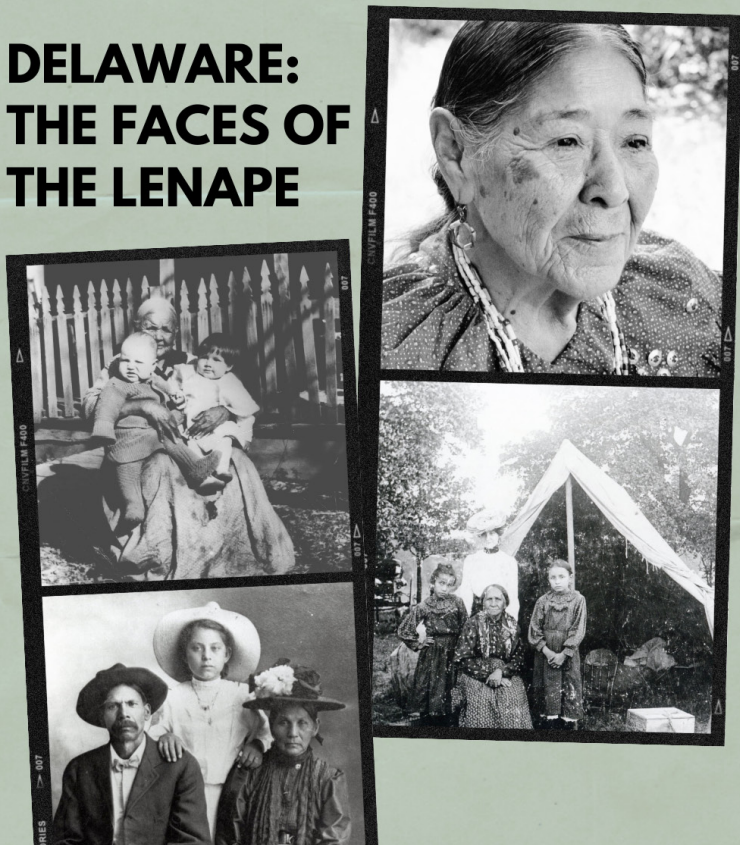
**DELAWARE TRIBE
FAMILY &
CHILDREN
SERVICES**

24 Hour Crisis Helpline

Domestic Violence
Sexual Assault
Stalking
Harassment
Dating Violence
Victim Advocacy

918.331.7349

DELAWARE: THE FACES OF THE LENAPE



**NOW THROUGH THE LAST WEEK OF NOVEMBER AT
THE BARTLESVILLE AREA HISTORY MUSEUM**

**401 S. JOHNSTONE AVE. 5TH FLOOR
MONDAY-FRIDAY 8:30-3:30
WWW.BARTLESVILLEHISTORY.COM**

Delaware Tribe Gift Shop Update

Our Gift Shop now has satin jackets with the tribal seal and a quilted liner. They come in red or black and are available in sizes Large, X-Large and 2-XL. Other sizes are available by special order. All gift shop items can be purchased online at www.delawaretribe.org/shop/. Major credit cards accepted and your purchase can be picked up or mailed. You may shop in person however you must first make an appointment to enter the building due to COVID-19 protocols set by the Tribal Council. Just call Anita Mathis at 918-337-6595 or 918-338-9919. Wanishi ■

DELAWARE TRIBE GIFT SHOP



**CULTURAL RESOURCES DEPARTMENT
166 N. BARBARA ST., BARTLESVILLE, OK
HOURS: M-F 9AM-5PM
918-337-6590 WWW.DELAWARETRIBE.ORG**





DELAWARE TRIBE OF INDIANS
Education Service Committee
5100 Tuxedo Blvd
Bartlesville, OK 74006
918-337-6590

DELAWARE TRIBE EDUCATION ASSISTANCE APPLICATION
For students aged Pre-K thru 5th grade

Application Guidelines:

The purpose of the school supply assistance program is to help registered members of the Delaware Tribe of Indians with the cost of purchasing required school supplies for their children. Assistance is based on a first come first serve basis and funding availability. Each applicant will receive a \$20 gift card. (A separate application must be submitted for each eligible child in the family)

Applications will be accepted until funds are depleted.

Eligibility:

1. A registered tribal member of the Delaware Tribe of Indians
2. Enrolled in grades Pre-K thru Fifth

Application Procedure:

1. Complete Application
2. Return application to the Education Department with the following documents:
**** Copy of child's Delaware registration card (no exceptions). Cannot use parents' registration card.**
Cards may be obtained from the Delaware Tribe Registration Department.

Name: _____
Last First MI. (Maiden)
Address: _____
Street City State Zip
Telephone: _____ *Email Address (please print legibly):* _____
2nd Phone: _____
Delaware Tribal Registration Number: _____
Date of Birth: _____ Age: _____ Male: _____ Female: _____
School: _____ Grade: _____

I hereby certify that the above information is true and correct to the best of my knowledge. Any funds received under false pretenses will be repaid to the education account within 30 days.

Signature of Applicant (parent or guardian)

Date

- ***ANY*** applicant purposely attempting to defraud the Education Committee will not be eligible for any Education Programs for a period of one (1) year.
- Registered Delaware Tribal member as defined in the Trust Document, Article 1-membership. Trust Board Education ordinances, Purpose 100, Requirements. Trust Funds Master Plan III)

Community Service Committee Use Only:

Approved By: _____ Date: _____
Total Amount: \$ _____
Denied by: _____ Date: _____
Reason for Denial: _____



DELAWARE TRIBE OF INDIANS
Education Service Committee
 5100 Tuxedo Blvd
 Bartlesville, OK 74006
 918-337-6590

DELAWARE TRIBE EDUCATION ASSISTANCE APPLICATION
For students in 6TH thru 12th grade

Eligibility Requirements:

- **Must be a registered member** of the Delaware Tribe of Indians. *A copy of the applicants Tribal Registration Card and number **MUST BE SUBMITTED WITH APPLICATION**. (If card is not available, a replacement may be obtained from the Delaware Tribe Registration Department).
- This Assistance is to assist students with items required for classes, but not provided by the school (such as school supplies, graduation expenses, ACT exams, summer school if required, band, choir, etc.).
- One application per student per fiscal year may be funded. Each applicant will receive a \$50 gift card.
- Awards are based on the availability of funds.

Directions:

1. Complete application and return with a copy of your Delaware Registration Card, to the attention of the Education Department to the address listed above.
2. A separate application must be submitted for each eligible child in the family.
3. Mail in applicants will be notified by email or phone call if assistance is approved.

Name: _____
 Last First MI. (Maiden)

Address: _____
 Street City State Zip

Telephone: (_____) _____ *Email Address (please print legibly)* _____

2nd Phone: (_____) _____

Delaware Tribal Registration Number: _____

Date of Birth: _____ Age: _____ Male: _____ Female: _____

School: _____ Grade: _____

I hereby certify that the above information is true and correct to the best of my knowledge. Any funds received under false pretenses will be repaid to the education account within 30 days.

Signature of Applicant (parent or guardian) _____

Date _____

- *ANY* applicant purposely attempting to defraud the Education Committee will not be eligible for any Education Programs for a period of one (1) year.
- Registered Delaware Tribal member as defined in the Trust Document, Article 1-membership. Trust Board Education ordinances, Purpose 100, Requirements. Trust Funds Master Plan III)

Community Service Committee Use Only:

Approved By: _____ Date: _____

Total Amount: \$ _____

Denied by: _____ Date: _____

Reason for Denial: _____



Brad KillsCrow
Chief

DELAWARE TRIBE OF INDIANS
Enrollment Department
5100 Tuxedo Blvd.
Bartlesville, OK 74006

www.delawaretribe.org
918-337-6570 or 918-337-6583
Email: enrollment@delawaretribe.org
Fax: 918-337-6540



Jeremy Johnson
Assistant Chief

MEMBER REQUEST TO UPDATE INFORMATION

Please complete with information currently on file in the Enrollment Office.

Last Name	First Name	Middle Initial
Other Name(s) – indicate maiden		Date of Birth
Address		Phone #
City	State	Zip
Email	Roll #	

Only complete boxes for which
you are requesting a change.

Name		
Phone #		
Address		
City	State	Zip
Email		

Other Member(s) Affected by Change(s):

Name	Date of Birth

Requests for name changes, must include Marriage License, Divorce Decree, or Adoption Order.

Member Signature _____

Date _____

Dec 2020

Delaware Indian News

The *Delaware Indian News* is the official publication of the Delaware Tribe of Indians. It is published quarterly by the Delaware Tribe of Indians and is mailed free to members. Subscriptions to non-tribal members are available at \$20 per year. To order a subscription, contact (918) 337-6590 or din@delawaretribe.org.

We invite contributions, but reserve the right to limit printing based upon available space. The deadline for articles, letters, ads and calendar of events is December 15, 2021 for the January 2022 issue. Submissions may be mailed, faxed or hand delivered to the tribal office or emailed to din@delawaretribe.org. Paid advertisements are available; for rates, please contact the editor.

Editorials, guest columns, and reader's letters reflect the opinion of the author and do not necessarily reflect the opinion of the *DIN*, its staff, or the tribal government. Editorials that are intended to be published in the *DIN* must concern tribal issues and should not be statements of general political beliefs. They must be signed by the author and include the author's address. The *DIN* does not guarantee publication upon submission of comments.

Published October 2021. Reprint permission is granted with credit to the *Delaware Indian News*, unless otherwise noted.

The mission of the *DIN* is to serve, empower and inform the Lenape people, while adhering to the policy of unbiased reporting in an ethical and professional manner.

Editorial Board:

Joe Brown, Gregory Brown, Dana Murrell

Technical Editor: Joe Brown

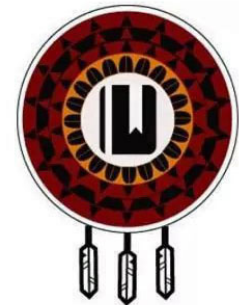
(din@delawaretribe.org) ■

Donations for Education Scholarships Gratefully Accepted

We invite tribal members and others to contribute to a special fund for educational scholarships. Donors are recognized in five levels: Send donations to

Brass Level	up to \$ 100
Silver Level	\$ 100-500
Gold Level	\$ 500-1,000
Wampum Level	\$ 1,000-5,000
Wampum Belt Level	above \$ 5,000

Delaware Tribe of Indians
Trust Board, Education Committee
5100 Tuxedo Blvd
Bartlesville, OK 74006-2746



Check Out the Tribal Web Site

Have you visited our Tribe's web site recently? Additional material that we were unable to include in the *DIN* can often be found there.

Go to: www.delawaretribe.org ■



Chet Brooks Memorial Scholarship Announced—Application Deadline February 15, 2022

The family of Chief Brooks wishes to make a one-time scholarship for two students in his honor. Amount will be unknown until the deadline date. The mission of the scholarship is to provide financial assistance to individuals enrolled for undergraduate or postgraduate study in community colleges, junior colleges, and universities. The Scholarship principally targets two- and four-year academic programs. The application may be found below this announcement, as well as online at <http://delawaretribe.org/blog/2021/09/24/chet-brooks-memorial-scholarship-announced/>. If you have any questions about the application, please contact us at (918)-337-6590. ■



Scholarship Application

Application date: February 15, 2022

Delaware Tribe of Indians
Bartlesville, Oklahoma, USA
Chet Brooks Memorial Scholarship

1. DEADLINE for scholarship applications is *February 15, 2022* (**NO EXCEPTIONS**)
2. Refer to application process below for a list of the supporting documents needed (i.e., reference forms, evidence of GPA, etc.) Incomplete applications will not be considered.
3. If any question does not apply to you in this application please put N/A in the space.
4. Type or print legibly. Illegible applications will be returned to you.
5. If you have any questions about the application contact us at 918-337-6590

PURPOSE The family of Chief Brooks wishes to make a one time scholarship for two students in his honor. Amount will be unknown until the deadline date. The mission of the scholarship is to provide financial assistance to individuals enrolled for undergraduate or postgraduate study in community colleges, junior colleges and universities. The Scholarship principally targets two and four year academic programs.

FINANCIAL ASSISTANCE is based on academic performance, leadership potential, and participation in community volunteer hours.

SCHOLARSHIP AWARDS

The Delaware Tribe of Indians will award two students on the basis of a comprehensive process. Areas that are reviewed by the committee include, but are not limited to the following: *Academic Accomplishments, Community Service, References, and Personal Essay. Scholarship funds are paid directly to the college.*

CRITERIA

- Applicants must be enrolled members of the Delaware Tribe of Indians.
- Applicants must be completing or have completed high school successfully with a minimum unweighted GPA of 3.0 on a 4.0 scale.
- Applicants must be accepted as a full time student at a *college or university* for the upcoming academic semester.
- Applicants must complete and submit a Scholarship Application by February 15, 2022
- Applicants must complete a 250 word essay on "What I Plan to Accomplish in Life".

TIMELINE

- Applications are due **February 15, 2022**
- Applicants will notified if awarded a scholarship

Application Process

SCHOLARSHIP APPLICANTS MUST PROVIDE:

- Completed application form.
- Official high school transcript or latest college transcript in a sealed envelope from the institution.
- Two letters of recommendation.
- Copy of Delaware Tribe of Indians Enrollment Card
- Proof of acceptance at an academic, vocational or technical school for post-secondary studies.
- A minimum 250 word essay.
- A letter of acceptance from the college or university or proof of enrollment.

SCHOLARSHIP AWARDS

- Applicants will notified if awarded a scholarship

Deadline for the application is Tuesday, **February 15, 2022** Applications received after this date will not be considered.

Please mail OR submit application to:

Delaware Tribe of Indians
Chet Brooks Memorial Scholarship
5100 Tuxedo Blvd.
Bartlesville, OK 74006



Chet Brooks Memorial Scholarship application -must be filled out by applicant.

Please **type or print** your answers below. A separate sheet may be used if needed. If application is illegible it will be returned to you.

1	Last Name: _____	First Name: _____
2	Mailing Address: Street: _____ City: _____ State: _____ ZIP: _____	
3	Daytime Telephone Number: () _____ Email address: _____	
4	Delaware Tribal Number (copy must be attached)	
5	Current High School or Higher Education Institute _____	High School Graduation date: _____
6	I will be attending the following school in <u>2022</u> : _____ Address/ Phone _____	
7	What year will you enter school? Freshman Sophomore Junior Senior	
8	Will you be a full time student? _____ (Minimum 12 hrs.)	
9	Will you be a commuting student? Will you live on campus? _____ If you are not living on campus, where will you be living? _____	
10	Grade Point Average (GPA): _____ (On a 4.0 scale) Attach proof of GPA; your most recent official school transcript required.	

11	ACT Score: _____ Or SAT Score: _____ If a graduating HS Senior copy of your ACT or SAT score sheet on official high school transcript is required.				
12	Name & address of parent(s) or legal guardian(s): Use reverse side of application if you need more space. Name (s) _____ Street: _____ City: _____ State: _____ ZIP: _____ Home phone of parents or legal guardians: _____				
13	List the name of any college you have attended.	Year Began	Year Ended	Year Graduated	Type of Degree or grade received /Hours
	A.				
	B.				
	C.				
14	What specialty/major do you plan to major in as you continue your education?				

15	List other financial assistance you will receive per semester or quarter:	
	A. Personal: (currently working or work /study during school)	Amount: \$ _____
	B. Other Scholarship(s):	Amount: \$ _____
	C. Grants:	Amount: \$ _____
	C. Student Loan(s):	Amount: \$ _____
	D. Other Financial Resources: (to include parent contribution)	Amount: \$ _____

Please list the following information on a separate sheet if needed.

16	SCHOOL EXTRA-CURRICULAR ACTIVITIES: Please list school extra-curricular activities in which you have participated. Note leadership roles and dates.
17	ORGANIZATIONS: Please list community organizations such as service, volunteer and religious organizations in which you are now active or have previously been active. Note leadership roles and dates.
18	RECOGNITIONS: Please list important awards and recognitions received. Note organizations presenting honor and date.
19	GOALS: What are the short and long term goals for your life?
20	NEED: Please explain your need for the Delaware Tribe of Indian Scholarship
21	A. The following criteria must be met in order for the application to qualify to be reviewed by the scholarship committee. B. Your application will be returned to you if these items are not attached to this application. (No exceptions.) C. Circle "YES" or "NO" to be sure you have completed and attached each item as required.
	YES NO Application complete
	YES NO Two reference forms. Your references should be in separate sealed envelopes
	YES NO Proof of college acceptance or current student enrollment. A letter of college enrollment or program enrollment is required for receipt of funds.
	YES NO Most recent official high school or official college transcript. Photocopies of your transcript are not acceptable .
	YES NO Copy of Delaware Tribal Enrollment Card
	YES NO 250 word essay on __What I Plan to Accomplish in Life __

STATEMENT OF ACCURACY

I hereby affirm that all the above stated information provided by me to the Delaware Tribe of Indians Scholarship Committee is true, correct and without forgery. I also consent that my picture may be taken and used for any purpose deemed necessary to promote the Delaware Tribe of Indians Scholarship Program.

I hereby understand that if chosen as a scholarship winner, I must provide evidence of enrollment/registration at the post-secondary institution of my choice before scholarship funds can be awarded.

Signature of scholarship applicant: _____ Date: _____

The deadline for this application must be received by February 15, 2022
No Exceptions!

U.S. Treasury Emergency Rental Assistance Program (ERAP)

The U.S. Treasury Emergency Rental Assistance (ERA) Program is designed to assist low-income Native American households/families with emergency rental and housing related assistance. Assistance may include deposit and/or monthly rent, rent arrearage, rent for manufactured housing, utilities and utility arrearage. **Current residents of DTI housing may be eligible for this assistance. The ERA program is available nationwide to Delaware Tribal members.** This program **DOES NOT** include mortgage assistance, repairs or installation of items for the unit.

This program is limited to three months of assistance and is only to be provided during the COVID-19 pandemic emergency. This is only provided on

an urgent basis to eligible applicants. **This assistance can only be provided to those families who have not yet received any similar assistance from the Delaware Tribe or other source.**

After the period of three months from the date of award, the applicant may re-apply for additional assistance subject to funding availability and time constraints. The Delaware Tribe reserves the right to recapture or award a lesser amount in such cases.

The household/applicant must be obligated to pay rent on a residential dwelling unit. The DTI must determine that: one (1) or more household members has qualified for unemployment benefits or experienced a reduced income, incurred significant costs

or experienced other financial hardship, directly or indirectly due to COVID-19; one (1) or more household members can demonstrate a risk of experiencing homelessness or housing instability; and the household has an **annual income at or below 80% of the area median income.** The Delaware Tribe reserves the right to make a determination of an applicant's eligibility based upon the application and documentation provided.

COVID-19 EMERGENCY RENTAL ASSISTANCE PROGRAM

The DTIs' COVID-19 Emergency Rental Housing Assistance Program is designed to assist low income Native American families with emergency rental housing related assistance. Assis-

tance may include deposit and/or monthly rent, temporary lodging, lot/site rental for manufactured housing, and may also include utility charges, but **DOES NOT** include repairs or installation of items for the unit. **Current resident of DTI affordable housing are not eligible for this assistance.**

This program is limited to one-time assistance and is only to be provided during the COVID-19 pandemic emergency and is provided on an urgent basis and is temporary in nature and must be used in prevention, preparation and/or response to the COVID-19 pandemic. This assistance can only be provided to those families who have not yet received any similar assistance from the Delaware Tribe or other source. Special exclusions or restrictions on units built prior to 1978 apply, due to lead-based

paint requirements. In no such case shall the term of the assistance or lodging provided exceed 100 days regardless of whether or not the entire \$1,000 award has been exhausted. The Delaware Tribe reserves the right to recapture or award a lesser amount in such cases.

Incomplete applications will not be processed.

Applications with the complete instructions are available in the lobby or can be printed/downloaded from the Delaware Tribe of Indians website.

There are two types of applications available. Applicants are not eligible for both. ■

Lenape Early Learning Center News

The Lenape Early Learning Center is now open in Bartlesville, Oklahoma. This LELC is a 3 star rated childcare center located in the Delaware Tribal complex. The LELC cares for children 0-5 years old and is open Monday through Friday from 7:00 A.M. to 5:30 P.M. The LELC opened its doors officially in June 2021 and is currently looking to enroll more Delaware families into the program. If you or someone you know is looking for high quality child care, please reach out! We have spots open.

You can reach the LELC by phone 918-337-6580

Email: mfisher@delawaretribe.org

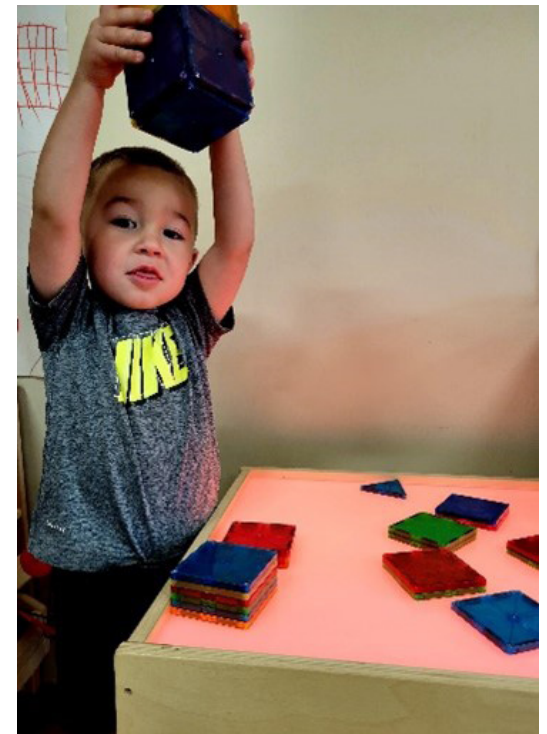
or you can fill out a waitlist application on line using the following link: <https://www.childplus.net/apply/en-us/68D5221F89928051AAA1CF67A074AF5F/382FC D1CE2A558635660D101E44A8CA1>



Here is Delaware tribal member and infant teacher Shelby Kessler with one of our Delaware babies, Elise Reith (12 months) enjoying cuddles and looking out of the window.



Here is one of our Delaware pre-schoolers, Axel Schueler (3 years old) showcasing his magnetic block tower for us! ■



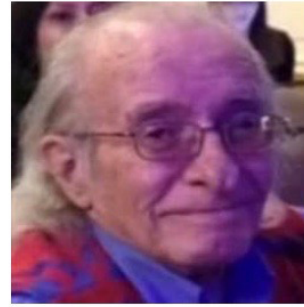


Chester Lee "Chet" Brooks

Chief of the Delaware Tribe

September 9, 1942 - August 22, 2021

Memorial Service: Saturday, September 11
Delaware Tribal Center • Bartlesville, OK



Chester Lee Brooks Jr.,

age 78, passed away on August 22, 2021. Chet was born on September 9, 1942 to Chester Lee Brooks and Helen Camp Brooks in Bartlesville Oklahoma. Chester graduated from College High School in Bartlesville in 1961. He attended Oklahoma State University and earned a degree in Forestry. Chet had many accomplishments during his life. He served The Delaware Tribe of Indians

for more than 35 years in many different capacities. He was the serving as Chief of The Delaware Tribe at the time of his death. The relationships that he gained while working with the tribe were very special to him. He was a strong leader and mentor. He had a wealth of knowledge about The Delaware Tribe. His heritage was something he was very proud of. The Delaware Tribe and the people were a very important part of his life.

Chet was survived by his five children, Robert "Reb" Brooks of Bartlesville, Travis Brooks of Tulsa, Ian Brooks of Tulsa, Chester "Lee" Brooks III of Bartlesville and Chimalus Brooks of Tulsa. Several grandchildren. He was also survived by his brother Larry "Joe" Brooks of Bartlesville, two nephews, Johnny Brooks of Oklahoma City, Shane Brooks of Shawnee Oklahoma and his niece Shaunda Stanley of Bartlesville. Chet loved his family very much.

Chet was preceded in death by his parents Chester Lee Brooks and Helen Camp Brooks, his grandmother Mary Sarcoxie and many other family members that he loved dearly.

Chet was one of a kind. He was a very kind and giving man. He will be missed by so many.

