



# 2020 Annual Report

Governor's Organ Donation Advisory Committee

**This page  
was  
intentionally  
left blank.**





### **Vision**

**Protect Health and Keep People Safe**

### **Mission**

**Increase available organs and tissues through education and an effective, confidential registry of potential donors**

## **Table of Contents**

### **4 FROM THE CHAIRPERSON/ DIRECTOR**

Joan Keiser; Randall W. Williams, MD, FACOG

### **5 GOVERNOR'S ORGAN DONATION ADVISORY COMMITTEE**

### **6 REMEMBER/HONOR**

Donor Family Recognition Program

### **8 EDUCATE, INSPIRE, SHARE**

Increasing awareness about the importance of organ, eye and tissue donation. Includes Financial Summary and SB 551

### **15 MISSOURI SNAPSHOT**

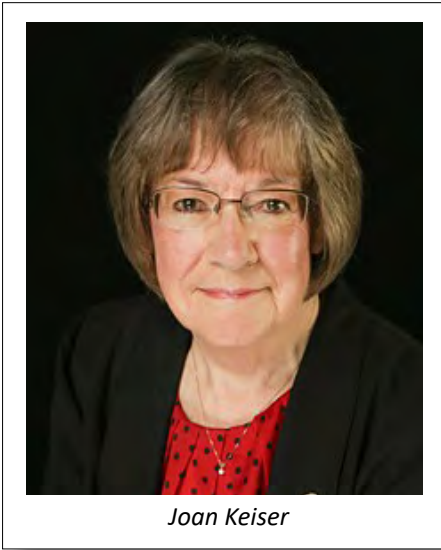
Data reports

### **22 LICENSE OFFICES**

Achievement of Local license offices'

### **24 REGISTRY PARTICIPATION**

Organ donor registration percentages and percent of change from Missouri's local license offices' registrations



Joan Keiser



Randall W. Williams

## From the CHAIRPERSON

---

**A**s we reflect on this last year and the journey for the [Governor's Organ Donation Advisory Committee](#) (GODAC), the words that continue to echo in my mind are: "Things don't always go as planned."

The Committee found itself along with our country, and the world in the midst of a Coronavirus pandemic. It was obvious we would need to adapt our event that takes place at the state Capitol in April to honor those family members that donated an organ, eye or tissue during this last year to save or enhance the life of another. Our culture has experienced a lot of virtual activity and GODAC with its flexibility and creativity came together with a plan to remotely honor those family members during Donate Life Month proclaimed by Governor Parson.

The year has been one of much reflection, setting priorities and reaffirming our values. Many education programs initiated by our partners have been impacted including the new effort authorized by the General Assembly and the Governor to educate school boards about organ donation.

GODAC desires to be a strong voice for donation as we strive to be that "good neighbor" - to offer a "second chance" at life by donation. I am pleased to have served on GODAC and applaud the entire Committee for their passion, tireless work and a job well done! For this journey with GODAC, I feel thankful and blessed.

Shalom, Chaplain Joan M. Keiser

## From the DIRECTOR

---

**C**hallenging! This word best describes the latter part of fiscal year 2020 as we all focused on, and continue to address, the SARS-CoV-2 (coronavirus, COVID-19) pandemic affecting our state. Many within the [Department](#), including the Organ and Tissue Donor Program staff, have dedicated their time and efforts assisting with the COVID-19 response. Like you, the Department has made changes to increase efficiency and adapt; most staff are working from home or in a hybrid structure, processes were modified and meeting virtually keeps public health moving forward.

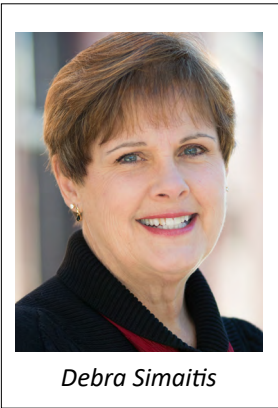
I am thankful for many things; the Committee's steady, and long-term service beyond their appointed time. The strong relationships with the Departments of Revenue, Conservation, Elementary and Secondary Education, the Missouri Kidney Program, Gift of Life, and the organ and tissue procurement agencies. The commitment of these groups continues to move programs like [Learn Life Savers](#) forward. I'm also thankful for the passing of SB551 that provides anatomical gift and living donor protections (page 9). And, Missourian's generosity and willingness to assist each other; evident by the increasing rate of life saving and healing gifts given by organ and tissue donors.

I ask that you remain vigilant through this pandemic; continue wearing your masks, wash your hands frequently, and social distance as we work together to keep and protect the health of our fellow Missourians.

Randall W. Williams, MD, FACOG



# Committee Members



*Debra Simaitis*

**Vice-Chairperson**  
Term: 2011-Present  
Donor Family  
Representative



*Jan Finn*

**Member**  
Term: 1999-Present  
Organ Procurement  
Organization  
Representative



*Phil Duncan*

**Member**  
Term: 2011-Present  
Organ Recipient  
Representative



*Peter Nicastro*

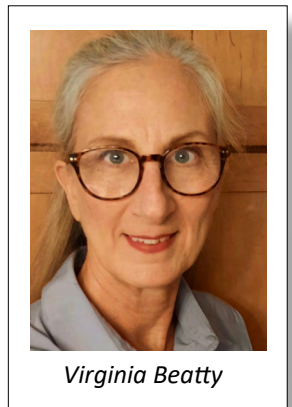
**Member**  
Term: 2006-Present  
Organ Recipient  
Representative



After a decade of service to the Governor’s Organ Donation Advisory Committee, including the last two as chairwoman, Rev. Joan Keiser is retiring from committee service. Keiser is also retiring as a chaplain for 28 years at St John’s/Mercy Hospital Springfield, in the neuro-trauma ICU and general neurology units. In that capacity, she has accompanied patients and families; provided donation and pastoral education for nurses, interns, and resident chaplains; and received an award on behalf of Mercy Hospital Springfield for organ donation from the Missouri Hospital Association. She has participated in the Candlelight Memorial Service/Donor Sabbath in Springfield and volunteered as Chaplain Champion for organ donation for Mid-America Transplant. Rev. Keiser is also a retired Methodist pastor. She is married to her husband Fritz of 60 years and has two children and five grandchildren.

As an active Committee member and leader, she represented Missouri hospitals. Joan chaired and served as a key leader in the growth of our donor family recognition project, where she brought her empathy and understanding to the experience of donor families. We thank Joan for her leadership and engagement and wish her the best retirement.

Peter Nicastro



*Virginia Beatty*

**Secretary**  
Term: 2006-Present  
DHSS Representative

The Governor's Organ Donation Advisory Committee recommends expenditure priorities from the Organ Donor Program Fund; assists in the development of organ donor awareness programs; and submits an annual report of activities and recommendations to the Governor, the General Assembly and the Director of The Department of Health and Senior Services ([RSMo 194.297](#), [194.299](#), and [194.302](#)). The Committee is committed to this service through collaboration with partners across the state.





# Remember/Honor

## Missouri Department of Health & Senior Services

### Fifth Annual Donor Family Recognition Program

Plans for the 2020 Donor Family Recognition Program started in November 2019. The theme for the 2020 event was "Garden of Life."

In preparation, the planning committee designed the day's activities to reflect the theme by incorporating live flowers and clay pots for the attendees to decorate in memory of their loved one and to take home. Plans also included refreshments for the attendees to enjoy, recognition of their loved ones gift on the Missouri House floor, photo display wall of their loved ones, and a special program to include live speakers and presentation of appreciation items and certificates.

Many across the state want to help recognize the generous gift of life and healing that organ and tissue donors provide. Expressions of appreciation included seed packets donated by Baker Creek Heirloom Seed Company (Mansfield, Mo.) and Walmart (Sedalia, Mo.); Redbud tree seedlings donated by the Missouri Department of Conservation; Donor Family pins, provided by a donor family; and dedicated parking provided by the City of Jefferson City. Event attendees would experience and receive these expressions of appreciation throughout the day, some during the special program.

January 2020 saw the mailing of invitations to donor families across the state with plans for the attendees to gather at the Missouri State Capitol on Tuesday, April 14, 2020.

Event plans quickly shifted in March when the COVID-19 pandemic reached Missouri and was rapidly impacting people across the United States. For the donor families', volunteers, and committee members' safety, it was necessary to cancel the in-person event and shift to a less formal recognition program. Families that sent in their RSVP received notification about the change and informed to expect a package in the mail later in the year.

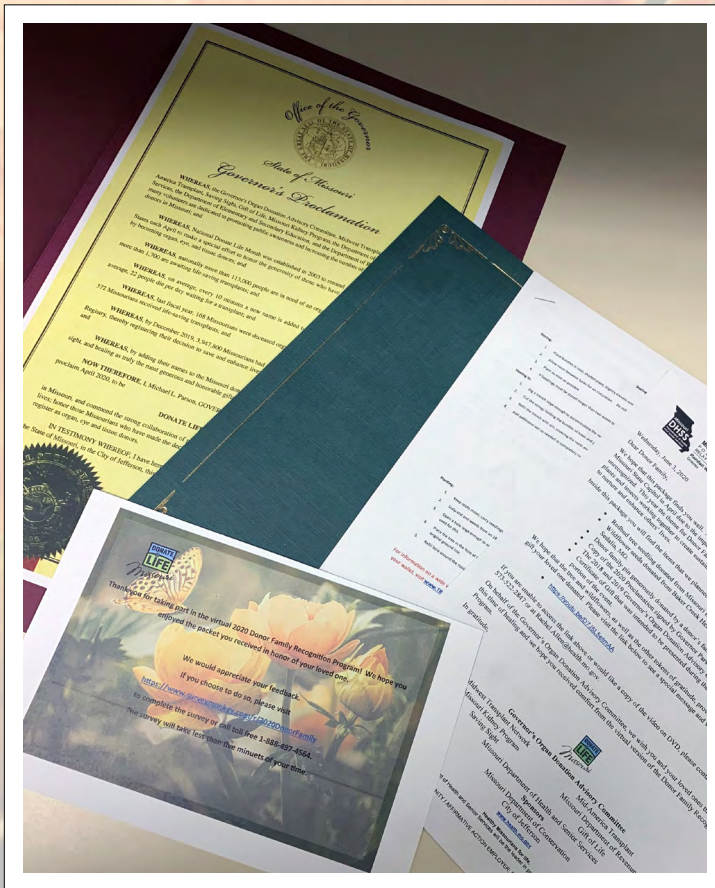
*Continued on page 9.*



*The Department of Health and Senior Services' Organ and Tissue Donor Program staff worked to prepare materials to mail to donor families. Above: Benjamin "Ben" Pringer; Below: Ben Pringer and Virginia Beatty.; Opposite Page: Sampling of materials included in the donor family packets. A special thank you to Rachel Allen who lead the planning team and provided these photographs.*



## Missouri Department of Health & Senior Services



### Organizations Involved

- Governor's Office
- Mid-America Transplant
- Saving Sight
- Midwest Transplant Network
- Missouri Kidney Program
- Governor's Organ Donation Advisory Committee
- Department of Conservation
- City of Jefferson City
- Baker Creek Heirloom Seed Company
- Walmart (Sedalia)
- Lincoln University (volunteers)
- Williams Woods University (volunteers)
- The Trolley Company
- Department of Health and Senior Services

*Continued from page 8.*

Not wanting the donor's act of kindness to go unrecognized, the planning committee compiled a video that included messages of gratitude from the Governor Michael L. Parson; GODAC Chair, Joan Keiser; Donor Recipient and GODAC member, Peter Nicastro; and the Department of Health and Senior Services Division of Community and Public Health Director, Adam Crumbliss.

Along with these messages, the committee developed a video that included photographs from previous Donor Family Recognition Program's that were held at the Missouri State Capitol, and most important, a special memorial recognizing the name of each donor whose families were planning to attend the 2020 in-person event.

Mailing seed packet and Redbud tree seedling donations, along with a letter, honor certificate, state proclamation, a Donor Family pin and a private web address to the video for families to watch virtually happened in June.

We take this opportunity to thank all who planned, re-planned, and remained committed to implementing a recognition program for donor families in 2020, even in the midst of a pandemic.



# Educate, Inspire, Share

## Missouri Department of Health & Senior Services

### Resilient and Adaptive

The Department's Organ and Tissue Donor Program saw many changes during fiscal year 2020. Over the past twelve to 18 months, we said goodbye to, and welcomed, two staff members. The professionalism, strengths and qualities of the new staff, Rachel Allen and Benjamin Pringer, assures the Organ and Tissue Donor Program continues to reach and provide services to Missourians.

During fiscal year 2020, the Department launched the new registry system, [Donate Life Missouri](#), assisted with the development and release of the [My Transplant Workbook](#), developed an [action](#) and [communication](#) plan, assisted with the development of the [Learn](#)

*Continued on page 9.*

### New System Launch

The Department launched the Donate Life Missouri Registry in January 2020.

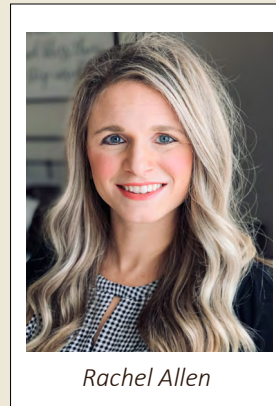
The new system has several improvements that include:

- Integrated registry and web site,
- More frequent data import from the Department of Revenue,
- Ability to submit organ and tissue stories,
- Online procurement agency access request process,
- Online removal process,
- Data reporting which includes a county map of registrants, and
- Many administrative functions.

[DonateLifeMissouri.org](http://DonateLifeMissouri.org)

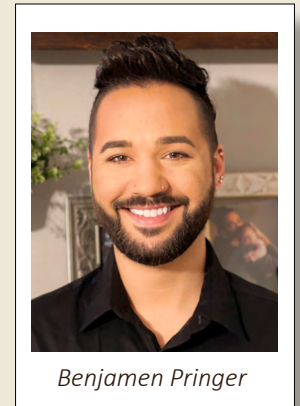
Ms. Valerie Volkart said farewell as the Health Program Representative August 30, 2019 as she changed positions to continue her public health career. We are grateful for all of the contributions she made to the program. Her joyful personality, can do attitude, attention to detail, professionalism, and customer service skills built relationships with the public, partners and team members alike. We wish Ms. Volkart the very best in her career.

Ms. Deb Gholson said goodbye to the program as the administrative assistant in May 2019 as she moved out-of-state to care for family. We are thankful for all of the contributions she made to the program. Her compassionate, and witty personality, professionalism, and attention to detail lent to her ability to provide exceptional customer service and in assisting with program efforts. We wish Ms. Gholson and her family the very best.



Rachel Allen

Rachel Allen is a Public Health Program Associate. She graduated from the University of Missouri with a Bachelor's of Science in Health Sciences, and has previous public health experience. Her responsibilities include the Donate Life Missouri donor registry system (DRS). Ms. Allen provides registry technical assistance, communicates with the public, documents program processes and security protocols, and will be instrumental in enhancing public education efforts, including leading the Annual Donor Family Recognition Program. We welcomed Ms. Allen to the program November 1, 2019.



Benjamin Pringer

Ben Pringer, Administrative Support Assistant, graduated from University of Central Missouri in Fashion Textiles Clothing Business. He brings years of customer service experience, staff training, and small event planning to his new career in public health. Mr Pringer assists with the Registry, communicating with the public, assisting with the Donor Family Recognition Program and planning and implementation of future program efforts. Mr. Pringer also assists the Department's Asthma, Arthritis, and MAP programs. We welcomed Mr. Pringer to the program March 2, 2020.





Continued from page 8.

[Life Savers Program](#), altered the Donor Family Recognition Program to keep people safe, processed registry records, and continued to host planning and committee meetings, though virtually after February 2020.

Beginning in March 2020, staff began assisting with the corona virus pandemic response; test result data entry, clinical and public hot-line, and vaccine preparedness.

While a challenging year, it was one of successful adaptation showing the resilient nature of the staff and the Department as a whole.

Staff remain optimistic and look forward to continued partnerships and program education growth in fiscal year 2021. We are grateful for all of our collaborative partners; we truly are stronger together.

<b>FY 2020 Budget Report</b>		
7/1/2019-6/30/2020		
	FY 20 Budgeted	FY 20 Actual
<b>Available Beginning Cash Balance (7/1/2019)</b>	<b>\$584,824.00</b>	<b>\$584,916.88</b>
<b>Revenues</b>		
<b>Total Revenues</b>	<b>\$261,298.00</b>	<b>\$300,830.72</b>
<b>Expenses</b>		
<b>Payroll Related Expenses</b>		
Salary, Fringe, Indirect, Network	\$238,219.00	\$207,340.98
<b>Expense &amp; Equipment</b>		
Annual Report	\$3,250.00	\$2,689.17
<b>Education &amp; Program Initiatives</b>		
Education & Program Initiatives	\$88,245.00	\$6,469.06
<b>Program Operation Expenses</b>		
Supplies, Toll Free Line & Voice Mail, Training, Postage, Travel, Planning	\$20,349.00	\$9,685.59
<b>Registry Expenses</b>		
Lookup Service, Domains, SDC, Registry Modernization, Licenses	\$250,740.00	\$242,040.24
<b>Refunds</b>	\$25.00	\$0.00
<b>Total Expenses</b>	<b>\$600,828.00</b>	<b>\$468,225.04</b>
<b>Projected Available Ending Cash Balance (6/30/2020)</b>	<b>\$245,294.00</b>	<b>\$417,522.56</b>
Dept. Operations & Network Costs		\$40,046.37
<b>Fund Cash Balance</b>		<b>\$457,568.93</b>



Order your **Be An Organ Donor** specialty plate at [dor.mo.gov](http://dor.mo.gov)

[Click to learn how.](#)

## SB 551: Anatomical Gift and Living Donor Protections

Missouri state legislature passed SB 551 on May 15, 2020 which Governor Michael L. Parson is expected to sign. The legislation prohibits potential recipient discrimination of an anatomical gift, during the transplant process, based on potential recipient's physical, mental abilities or congenital condition unless medically significant to the provision of the anatomical gift. Proposed language also prohibits discrimination in life, accident, sickness and long-term care insurance against a person based on the person's status as a living organ donor. [Click here to read the full bill.](#)



# Educate, Inspire, Share

## Missouri Kidney Program *by Lauri Hines, Director*

### Serving Missourians

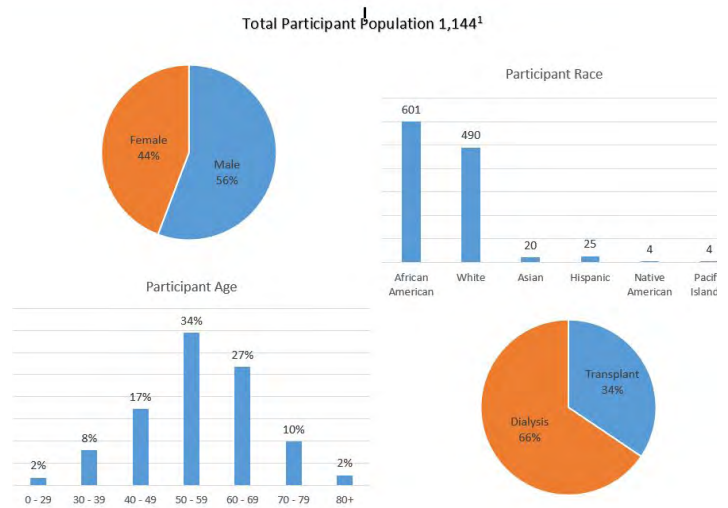
As you can see from our Dashboard, we continue to effectively serve Missourians with kidney disease, including those preparing for, recovering and living with a kidney transplant.

One of our most exciting developments this year is My Transplant Workbook. This product was designed and produced in collaboration with the Department of Health and Senior Services Organ and Tissue Donor Program, the QSource Regional Kidney Network, and with Health Literacy Missouri. We distributed printed workbooks to every dialysis facility and transplant center in Missouri for their patients who are ready to pursue transplant. Gift of Life's mentoring program is using the resource too. The Workbook is available as a fillable pdf on the MoKP website ([mokp.org/transplant](http://mokp.org/transplant)).

Recognizing the challenges of the Covid pandemic and its unique impact on dialysis patients, the program has been offering financial assistance to patients who are Covid positive, or presumed positive, to help cover the costs of transportation to and from isolation dialysis facilities.

In partnership with University of Missouri Show-Me-ECHO, the first year of the nation's only Kidney Disease ECHO concluded. Project ECHO, Extension for Community Healthcare Outcomes is an innovative tele-mentoring program designed to create virtual communities of learners by bringing together healthcare providers and subject matter experts using videoconference technology, brief lecture presentations, and case-based learning, fostering an "all learn, all teach" approach. Participants are engaged in the bi-directional virtual knowledge network by sharing clinical challenges and learning from experts and peers.

We are grateful to have the DHSS Organ and Tissue Donor Program manager serving as a partner on our [Missouri Kidney Program Advisory Council](#).



**Did you know ...**

- MoKP served 1,356 participants during FY20<sup>1</sup>
- Participants enrolled in MSPs<sup>2</sup>  
QMB 331  
SLMB 230
- MoKP dispensed \$4,697,170 in medications while only spending \$200,372<sup>3</sup>
- MoKP has four CLAIM Certified counselors
- MoKP has its own in-house FSD caseworker

Assistance Provided to Participants		
	# of participants	Amount Spent
Transportation <sup>3</sup>	254	\$246,235.66
Private Premiums <sup>4</sup>	64	\$197,290.90
Transplant Assistance <sup>5</sup>	6	\$5,986.00
Medication Co-Pays <sup>6</sup>	3	\$603.82
Centralized Drug Program <sup>7</sup>	1,026	\$261,825.34

"MoKP has saved my life!"  
- Deborah

Other Assistance Provided by MoKP		
	# of participants	Amount Spent
Spenddown Pay-In <sup>9</sup>	735	\$523,398.02
Ticket to Work <sup>10</sup>	82	\$59,040.00

"MoKP is a wonderful program and the staff is fantastic."  
- Frank

97% of participants say transportation assistance makes it more likely they will get to dialysis regularly and maintain a weekly schedule

99% of participants say medication assistance makes it more likely they will take their medicines regularly and as prescribed

**MoKP DASHBOARD LEGEND**

- Participant Population** - 1,144 participants as of June 30, 2020, end of FY. Total number of participants served during the year was 1,356. Regular churn of population due to death, loss of eligibility, and mostly due to patients who needed dual status but did not need/want to use MoKP Centralized Drug Program, Kilgore's for their medications.
- Medicare Savings Programs** - MoKP helps eligible participants enroll and maintain QMB (Qualified Medicare Beneficiary) and SLMB (Specified Low-Income Medicare Beneficiary) which covers Medicare Part B premiums each month for the participants.
- Transportation Assistance** - covers transportation costs to and from dialysis treatments, using various modalities. Reimbursement to facilities only.
- Private Premium Assistance** - reimbursement for insurance premiums for transplant recipients. Reimbursement to facilities only.
- Transplant Assistance** - up to \$1,000 to help defray non-medical costs associated with transplant (lodging during transplant, childcare, lost wages, travel costs, and living expenses). For transplant recipient or living donor, amount can also be shared between donor and recipient. No asset or income requirements. Reimbursement to facilities only.
- Medication Co-Pay Assistance** - cover medication co-pays for participants who have insurance that requires them to use a specialty pharmacy. Reimbursement to facilities only.
- Centralized Drug Program** - MoKP contractor Kilgore's Medical Pharmacy provides medications including immunosuppressive drugs that are on the MoKP formulary, via mail or pick up. This includes the cost of mailing medications out to participants. Payments for covered medications are made directly to Kilgore's Medical Pharmacy.
- Cost Savings** - MoKP ensures participants are enrolled in all available assistance programs to alleviate the cost of medications. The cost of mailing medications out to participants is not included in this total.
- MO HealthNet Spenddown Pay-In** - MoKP pays in a participant's spenddown when it saves the program money. Ensuring a participant has MHN coverage means the cost of medications and transportation for is paid for by MHN. MoKP also pays in spenddown once a year for all dialysis and transplant patients to make them dual eligible. Dual eligible status means lower cost co-pays for medications and zero dollar deductibles and premiums for their Medicare Part D plan. These spenddown payments are made directly to the MO Dept. of Social Services, MHN Division.
- Ticket to Work Health Assurance Program** - cover premiums for TFWA, which is a state/federal program allowing disabled persons to work without the risk of losing their health insurance coverage through MHN. Persons are able to purchase MHN coverage for a small monthly premium, which is then paid for by MoKP. These payments are made directly to the MO Dept. of Social Services, MHN Division.

Missouri Kidney Program  
University of Missouri

Advisory Council Dashboard  
Data from 06/30/2020



## Gift of Life *by Janet Burton, Interim Executive Director*

### Responding Creatively to Adversity

As this is written, we are eight months into the COVID-19 pandemic, which has disrupted and transformed [Gift of Life](#). In mid-March, schools closed, hospitals no longer allowed outside visitors, and state and local ordinances closed Gift of Life's office building and led to the cancellation of GoSeeDo, the organization's largest annual fundraising event.

School presentations scheduled in Kansas City and in St. Louis, where the Life Savers program had recently expanded, were canceled just as momentum and new high school relationships were being formed. We were forced to find new ways to educate students about organ, eye and tissue donation and provide mentoring support and encouragement to transplant patients.

Gift of Life's staff reacted quickly, pivoting to working from home, embracing technology and working creatively and resiliently. We are grateful for the support this year that enabled us to achieve the following:

- The GIVE TO LIVE fundraising campaign was created to replace GoSeeDo and raised more than \$138,000.
- The Transplant Mentors program launched an outreach campaign to transplant hospitals across the country, resulting in 30 additional hospitals agreeing to refer transplant patients to the program, increasing the number of participating hospitals to 34. A virtual Transplant Mentors training including new volunteers from many of these hospital programs took place in November.
- Life Savers program staff worked through the summer to develop a menu of program delivery options across technology platforms as high schools brought students back to school in a variety of virtual, hybrid, in-classroom and independent on-line learning scenarios. Life Savers classroom educators now provide in person, virtual, recorded, and on-line presentations.
- A 206 square foot office was added to Gift of Life's office suite to provide appropriate social distancing for each in-office employee, and professional space

from which to provide virtual on-line classroom presentations, mentoring, education and volunteer training.

- The organization's contact database was upgraded and Life Savers program tracking was migrated, creating a single, cloud-based resource for Gift of Life's donor, teacher, and volunteer records and Life Savers program results.
- A Strategic Business Plan was completed and includes goals to maintain and sustain programs and operations through the duration of the pandemic; to focus on creating success for the St. Louis Life Savers program expansion, the Learn Life Savers on-line curriculum, and roll-out of the newly expanded Transplant Mentors program; and to increase funding to support these growth initiatives. With this plan, we have set the stage for the search to begin for Gift of Life's next permanent Executive Director.

The pandemic will continue to impact and shape Gift of Life's program, fundraising and office operations for the foreseeable future. With a successful track record of responding creatively to adversity over the past eight months, the organization has transformed its program delivery into new formats and technologies, responded to lessons learned, and reacted successfully and nimbly to unforeseen challenges.

While we miss being with our contributors, volunteers, teachers, students, patients, donor families, transplant teams, and board members - in person, we are available by phone, email, Zoom, and even socially distanced and masked when needed. For it is each of you that sustains us and for that we are truly grateful.





# Educate, Inspire, Share

## Saving Sight *by Nicole Leathers*

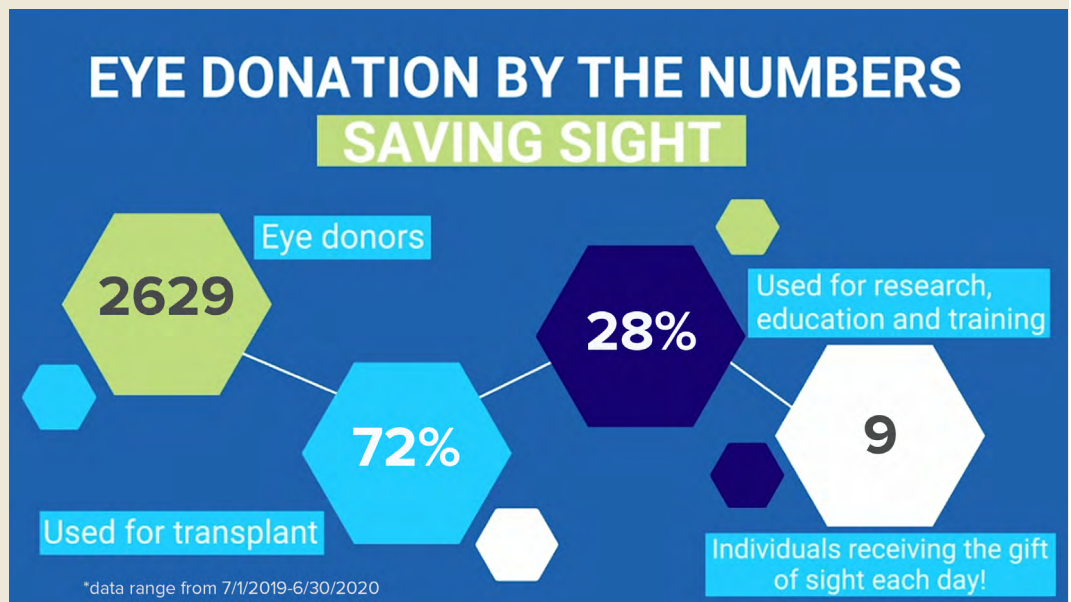
### Restored Vision Takes Carol to New Heights



Carol received two corneal transplants, both during COVID-19, after a long battle of deteriorating eyesight due to Fuchs Dystrophy. “It was life-changing! I was like a kid who just woke up from a black and white dream. Brighter, clearer and truer,” says Carol. “It began with the donor and it was so nice to be able to close that loop for me and let them know how much I appreciated their loved one being open to donation, to tell them this is what happened. It saved my sight. And I’m just very deeply appreciative of the work that Saving Sight does as well. This was a 100 percent uplifting experience for me during the worst pandemic of our lifetime.”

Saving Sight is a 501(c)(3) nonprofit organization with a mission to change lives by saving sight. Founded in 1960, Saving Sight has grown to become one of the nation’s leading eye banks and is focused on providing innovative solutions to its clinical partners. Headquartered in Kansas City, Mo., Saving Sight facilitates eye donation in Missouri, Kansas, and Illinois, impacting the lives of those both near and far through transplantation.

Saving Sight celebrated its 60th year of changing lives by saving sight this year with a record impact for the recipients of our programs. To learn more, please visit [www.saving-sight.org](http://www.saving-sight.org).





## Midwest Transplant Network *by Becky Storm*

### MTN Reaches Milestones, Adapts Offerings During Pandemic

During the state FY2020 reporting period, [Midwest Transplant Network](#) (MTN) recorded donation milestones and provided numerous educational opportunities — all despite the many challenges associated with the coronavirus, which became a pandemic in March 2020.

In September 2019, MTN hosted approximately 250 hospital staff members at its fifth Critical Care Donation Symposium. That month, the organization recovered approximately 13,000 tissues from a record-setting 185 donors, reflecting the strong work of MTN's recovery services departments. Tissue Services staff also recovered their first spine for research on September 30. MTN partners with the University of Missouri Orthopedic Institute to aid in cutting-edge research of degenerative spine disorders.

That October, KCPT/The Bridge, a Kansas City's public radio station, named MTN its Corporate Partner of the Year in recognition of "Songs from the Heart," a day of radio programming celebrating stories of organ, eye and tissue donation held on or around National Donor Day. The following month, MTN offered more continuing education through its fifth annual Transplant Symposium, hosting about 75 hospital staff members.

Rounding out 2019, members of MTN's Organ Services department cared for an 84-year-old liver donor, the organization's oldest donor ever. MTN set records in 2019 for number of organ donors, organs transplanted, tissue and eye donors and laboratory tests.

In March 2020, as COVID-19 hit, MTN reached a major milestone, recovering organs from 35 donors — the most the organization has ever recovered in a single month. MTN launched a blog in April, creating space for new content, such as employee spotlights, department highlights, event recaps and more. Leadership and staff adapted to a virtual environment for their Skills Day, continuing education and special training for all staff members. MTN plans to incorporate more virtual trainings in the future.



*2019 Critical Care Donation Symposium | L to R: Hospital Services-In House and Family Services Coordinator Julieanne Hagedorn and Director, Columbia Operations Lori Clark*

The organization also transitioned its largest annual event, the Donate Life Legacy Walk, entirely to social media. Leading up to the June 6 event, Community Education staff members held weekly Facebook Live events to generate excitement, then produced 13 hours' worth of programming the day of the walk, reaching 15,000 people on Facebook alone.

Although MTN, like other organizations, has faced many difficulties associated with the ongoing coronavirus pandemic, its staff members have already broken records during the first six months of 2020 in terms of organ donors recovered and laboratory tests performed. MTN staff members look forward to continuing to provide high-quality care for organ, eye, and tissue donors and their families in 2021 and beyond.



# Educate, Inspire, Share

## Missouri Department of Revenue *by Gina Wisch*

The Department of Revenue (DOR) Motor Vehicle and Driver Licensing Division and its contract license offices continue to be active partners in enrolling registry participants and in collecting donations for the organ donor program. Each driver license, non-driver license and permit applicant is presented the opportunity for registry participation, optional symbol placement and one dollar donation. Data collected is then submitted electronically through a secure, encrypted process the Donor Registry System.

Individuals may also request a “Be An Organ Donor” specialty motor vehicle license plate to show their support of organ donation. As of November 2020 there were 589 active donor plates on Missouri vehicles. Interested individuals may go to [www.dor.mo.gov](http://www.dor.mo.gov) for more information on how to obtain the specialty license plate.

Beginning October 1, 2021, residents of every U.S. state and territory will be required to present a REAL ID compliant driver license or ID card, or another form of ID accepted by the Transportation Security Administration, to board federally regulated domestic flights, to access certain federal facilities and to enter nuclear power plants. The DOR implemented a REAL ID-compliant driver license or non-driver identification card program in March 2019 to ensure Missouri residents have time to obtain required the REAL ID-compliant card if needed.

In June of 2020, the DOR implemented a new card format which provided a new background design and security features, which also includes special indicators such as the donor symbol. Information about the REAL ID or the new card design can be found at [www.dor.mo.gov](http://www.dor.mo.gov). Examples are on page 19.



## Missouri Department of Conservation *by Jake Buxton*

The Missouri Department of Conservation (MDC) continues to be an active partners in enrolling participants into the Donate Life Missouri Registry through our online hunting and fishing permit purchasing portal. Once a hunter or fisher completes their MDC online permit application, they have the opportunity to click on and enroll into the Donate Life Missouri registry.

The MDC has also included the donor symbol noted on Missouri driver license and identification cards on their main site footer, as well as on [nature.mdc.mo.gov](http://nature.mdc.mo.gov) and [huntfish.mdc.mo.gov](http://huntfish.mdc.mo.gov). The symbol links to the Donate Life Missouri Registry.

In 2020, MDC helped sponsor the Donor Family Recognition program by providing redbud tree saplings

for donor families to plant in memory of their loved one. We are looking forward to future sponsorship in this annual event. In addition, we participate in the Governor’s Organ Donation Advisory Committee meetings to gain insight on how the partnership can continue to grow.

We take this opportunity to thank all who register as organ, eye and tissue donors and look forward to continued collaboration between MDC and the Departments of Health and Senior Services, Revenue, Secondary & Elementary Education, and the Governor's Organ Donation Advisory Committee.







## Registered by Age

<b>65+</b>	<b>720,713</b>
<b>55-64</b>	<b>619,038</b>
<b>45-54</b>	<b>628,608</b>
<b>35-44</b>	<b>785,633</b>
<b>25-34</b>	<b>770,968</b>
<b>18-24</b>	<b>386,552</b>
<b>15-17</b>	<b>71,759</b>
<b>≤14</b>	<b>4,172</b>

Source: Missouri Donor Registry System, does not include out-of-state registrants. (6.26.2020)

## Missouri Registrants

# 3,987,273

Source: Missouri Donor Registry System, does not include out-of-state registrants. (6.26.2020)







## Registered by Sex

<b>Female</b>	<b>Male</b>
<b>2,111,662</b>	<b>1,875,611</b>
<b>52.99%</b>	<b>47.01%</b>

Source: Missouri Donor Registry System, does not include out-of-state registrants. (6.26.2020)

## Total Registrants By Fiscal Year

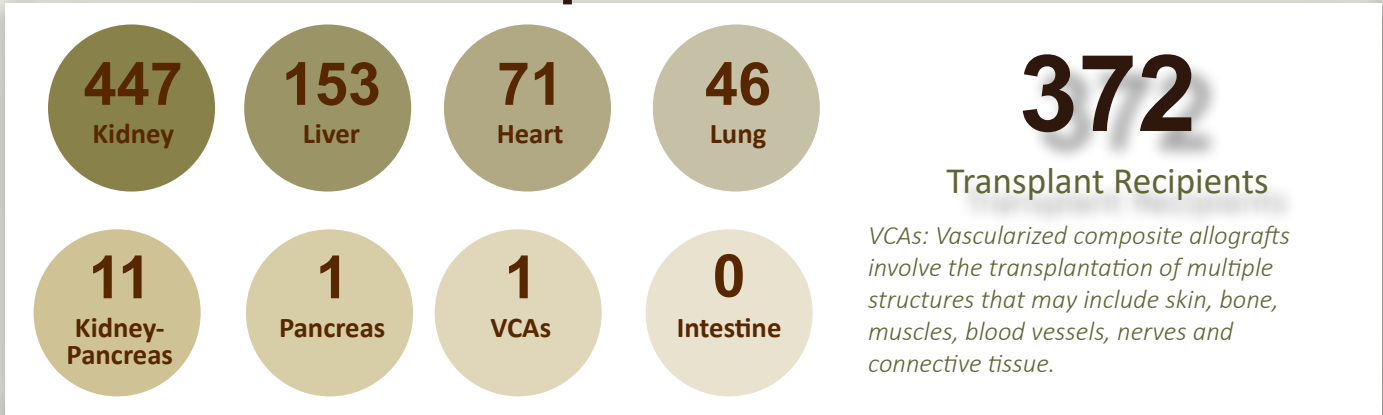
Source: Missouri Donor Registry System

FY20	3,987,012	↑ 2.92%	
FY19	3,874,005	↑ 2.72%	
FY18	3,772,433	↑ 3.57%	
FY17	3,642,509	↑ 3.11%	
FY16	3,532,646	↑ 3.73%	
FY15	3,340,602		



# Missouri Snapshot

## Transplant Statistics



Source: United Network for Organ Sharing (UNOS) Organ Procurement and Transplantation Network; July 1, 2019-June 30, 2020

## Organ Donors

FY 18	FY 19	FY 20
Living <b>88</b>	Living <b>99</b>	Living <b>95</b>
Deceased <b>294</b>	Deceased <b>316</b>	Deceased <b>349</b>

Source: United Network for Organ Sharing (UNOS), Organ Procurement and Transplantation Network; Missouri Reported as Home State/Permanent Residence; July 1, 2019-June 30, 2020

## Organ Donors | Recipients

FY 18	FY 19	FY 20
Donors <b>382</b>	Donors <b>415</b>	Donors <b>349</b>
Transplants <b>648</b>	Transplants <b>701</b>	Transplants <b>730</b>

Source: United Network for Organ Sharing (UNOS), Organ Procurement and Transplantation Network; Missouri Reported as Home State/Permanent Residence; July 1, 2019-June 30, 2020

## Heroes

**95** Living Donors

**349** Deceased Donors

Source: United Network for Organ Sharing (UNOS), Organ Procurement and Transplantation Network; July 1, 2019-June 30, 2020



# Missouri Snapshot

## Missouri Waitlist

Organ	Individuals Waiting
Heart-Lung	2
Heart	45
Intestine	4
Kidney	1,073
Kidney-Pancreas	19
Liver	126
Lung	6
Pancreas	4
<b>Total*</b>	<b>1,261</b>

Source: United Network for Organ Sharing (UNOS) as of July 3, 2020. Note: \*Total number of patients in all organ types is less than the sum of the organs due to patients listed for multiple organs.



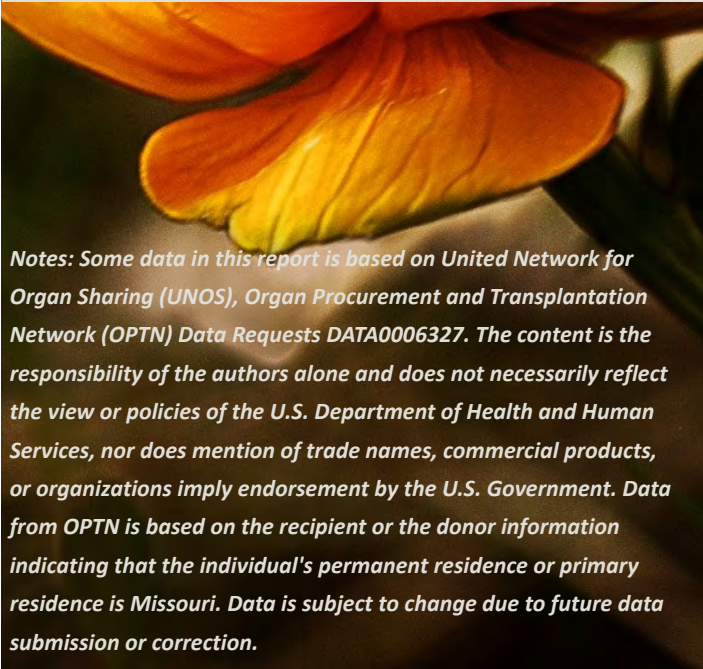
**1:8**

One organ donor can save eight lives and enhance the lives of 75 or more.

## Removed from Waiting List

FY 18	FY 19	FY 20
Passed Away	Passed Away	Passed Away
<b>60</b>	<b>66</b>	<b>59</b>
Too Sick	Too Sick	Too sick
<b>83</b>	<b>328</b>	<b>372</b>

Source: United Network for Organ Sharing (UNOS), Organ Procurement and Transplantation Network; Missouri Reported as Permanent Residence at Time of Listing; July 1, 2019-June 30, 2020



Notes: Some data in this report is based on United Network for Organ Sharing (UNOS), Organ Procurement and Transplantation Network (OPTN) Data Requests DATA0006327. The content is the responsibility of the authors alone and does not necessarily reflect the view or policies of the U.S. Department of Health and Human Services, nor does mention of trade names, commercial products, or organizations imply endorsement by the U.S. Government. Data from OPTN is based on the recipient or the donor information indicating that the individual's permanent residence or primary residence is Missouri. Data is subject to change due to future data submission or correction.



## Highest Percent of Change-License Offices

The two tables at the bottom of this page show the highest percent of increase from the previous fiscal year for registrations and contributions. The calculation is by location and is independent of contractor. The offices listed below received certificates, delivered by partner agencies, in recognition of their efforts.

Three additional offices met or exceeded the goal of 47 percent registration; 153 offices compared to 150 offices in FY19. Many offices maintained or exceeded their previous years enrollment percentages despite the closing of many offices during the last quarter of FY20 due to the pandemic. A full report showing the percent of change for registrations by office begins on page 20.

Registrations		
Office	County	Percent of Change
Stockton	Cedar	29.2
Caruthersville	Pemiscot	17.1
Aurora	Lawrence	5.8
Springfield	Greene	5.6
Owensville	Gasconade	5.5
Paris	Monroe	5.3
Crane	Stone	4.8
Maplewood	St. Louis	4.6
Hannibal	Marion	4.6
Sikeston	Scott	4.5

*Note: Contractor change or office closure during FY 19 or FY 20 may alter the percentage. Data is subject to change based on future data submission or correction.*

Contributions		
Office	County	Percent of Change
Malden	Dunklin	20.5
Liberty	Clay	20.4
Waynesville	Pulaski	19.5
Parkville	Platte	18.6
Maplewood	St. Louis	18.5
Kirkville	Adair	17.0
Oakville	St. Louis	16.9
Washington	Franklin	16.7
Hannibal	Marion	15.1
Chillicothe	Livingston	13.5

*Note: Contractor change or office closure during FY 19 or FY 20 may alter the percentage. Data is subject to change based on future data submission or correction.*



# License Offices

## FY 20 Awards

The local license offices with the highest percentage of registrations and contribution collections per transaction receive recognition. Recognition is in the form of a certificate and this report.

Awards are calculated on a quarterly and yearly basis. The following offices were recognized in FY 20. Each list begins with the license office with the highest ranking.

First Quarter	Second Quarter	Third Quarter	Fourth Quarter	Yearly
<b>Registrations</b> <ul style="list-style-type: none"> <li>Liberty</li> <li>Columbia South</li> <li>Parkville</li> <li>Pacific</li> <li>Des Peres</li> </ul>	<b>Registrations</b> <ul style="list-style-type: none"> <li>Liberty</li> <li>Des Peres</li> <li>Washington</li> <li>Maplewood</li> <li>Parkville</li> </ul>	<b>Registrations</b> <ul style="list-style-type: none"> <li>Cameron</li> <li>Liberty</li> <li>Pacific</li> <li>Des Peres</li> <li>Maplewood</li> </ul>	<b>Registrations</b> <ul style="list-style-type: none"> <li>Liberty</li> <li>Des Peres</li> <li>Nixa</li> <li>Washington</li> <li>Excelsior Springs</li> </ul>	<b>Registrations</b> <ul style="list-style-type: none"> <li>Liberty</li> <li>Des Peres</li> <li>Washington</li> <li>Columbia South</li> <li>Maplewood</li> </ul>
<b>Contributions</b> <ul style="list-style-type: none"> <li>Waynesville</li> <li>Lamar</li> <li>Montgomery</li> <li>Affton</li> <li>Plattsburg</li> </ul>	<b>Contributions</b> <ul style="list-style-type: none"> <li>Waynesville</li> <li>Pacific</li> <li>Washington</li> <li>O'Fallon</li> <li>Montgomery City</li> </ul>	<b>Contributions</b> <ul style="list-style-type: none"> <li>Waynesville</li> <li>O'Fallon</li> <li>Princeton</li> <li>Rock Port</li> <li>Montgomery City</li> </ul>	<b>Contributions</b> <ul style="list-style-type: none"> <li>Malden</li> <li>Montgomery City</li> <li>Stockton</li> <li>Washington</li> <li>Princeton</li> </ul>	<b>Contributions</b> <ul style="list-style-type: none"> <li>Waynesville</li> <li>Montgomery City</li> <li>Washington</li> <li>Princeton</li> <li>O'Fallon</li> </ul>

# 153

of 172 local license offices met or exceeded the registration goal of 47%, even in the midst of a pandemic! Thank you for always asking the question.

# It's here!

The NEW Missouri driver license!



The new license still has the symbol on the front. If you decided to be a donor after getting your license or identification card, there is a place on the back to add a sticker. Call 888.487.5465 to learn how.



# Missouri Registry Participation

Offices were challenged during this past fiscal year as many closed for a period of time due to the pandemic. Thanks to clerks asking every individual if they want to be a registered donor, many still reached the goal of 47 percent of transaction registering. Offices in bold text met or exceeded the average registration goal of 47 percent for FY 20.

County/Office Name	FY 20	% of Change	County/Office Name	FY 20	% of Change
ADAIR			CAPE GIRARDEAU		
<b>Kirkville.....</b>	<b>48.3%</b>	<b>+0.0</b>	<b>Cape Girardeau .....</b>	<b>57.1%</b>	<b>+1.2</b>
			<b>Jackson .....</b>	<b>53.0%</b>	<b>+3.1</b>
ANDREW			CARROLL		
<b>Savannah .....</b>	<b>58.5%</b>	<b>-2.3</b>	<b>Carrollton.....</b>	<b>51.5%</b>	<b>+1.6</b>
ATCHISON			CARTER		
<b>Rock Port.....</b>	<b>62.3%</b>	<b>+1.9</b>	Van Buren .....	39.5%	+4.3
AUDRAIN			CASS		
<b>Mexico .....</b>	<b>55.4%</b>	<b>+3.7</b>	<b>Belton .....</b>	<b>61.3%</b>	<b>-2.2</b>
BARRY			<b>Harrisonville.....</b>	<b>63.6%</b>	<b>+0.1</b>
<b>Cassville .....</b>	<b>47.4%</b>	<b>-0.8</b>	CEDAR		
<b>Monett.....</b>	<b>51.7%</b>	<b>-1.0</b>	<b>Stockton.....</b>	<b>56.5%</b>	<b>+29.2</b>
BARTON			CHARITON		
<b>Lamar.....</b>	<b>56.9%</b>	<b>+1.5</b>	Keytesville.....	42.6%	-0.4
BATES			CHRISTIAN		
<b>Butler .....</b>	<b>60.4%</b>	<b>+2.3</b>	<b>Nixa.....</b>	<b>64.5%</b>	<b>+3.2</b>
BENTON			<b>Ozark .....</b>	<b>63.3%</b>	<b>+0.8</b>
<b>Warsaw .....</b>	<b>51.7%</b>	<b>+2.0</b>	CLARK		
BOLLINGER			<b>Kahoka .....</b>	<b>58.3%</b>	<b>+2.3</b>
<b>Marble Hill .....</b>	<b>48.3%</b>	<b>+1.9</b>	CLAY		
BOONE			<b>Excelsior Springs.....</b>	<b>65.4%</b>	<b>+1.6</b>
<b>Columbia.....</b>	<b>52.7%</b>	<b>+1.5</b>	<b>Gladstone.....</b>	<b>57.5%</b>	<b>+0.6</b>
<b>Columbia South.....</b>	<b>66.3%</b>	<b>-0.5</b>	<b>Liberty.....</b>	<b>70.0%</b>	<b>+2.7</b>
BUCHANAN			<b>North Kansas City .....</b>	<b>50.1%</b>	<b>-1.8</b>
St. Joseph.....	45.3%	-0.7	CLINTON		
BUTLER			<b>Cameron .....</b>	<b>57.9%</b>	<b>+1.8</b>
Poplar Bluff .....	45.8%	+0.2	<b>Plattsburg.....</b>	<b>62.2%</b>	<b>+1.1</b>
CALDWELL			COLE		
<b>Kingston .....</b>	<b>60.4%</b>	<b>+3.1</b>	<b>Jefferson City.....</b>	<b>55.1%</b>	<b>+2.5</b>
CALLAWAY			COOPER		
<b>Fulton .....</b>	<b>53.6%</b>	<b>+0.9</b>	<b>Boonville .....</b>	<b>53.8%</b>	<b>+0.0</b>
CAMDEN			CRAWFORD		
<b>Camdenton .....</b>	<b>62.6%</b>	<b>+2.1</b>	<b>Cuba.....</b>	<b>54.8%</b>	<b>+1.8</b>
			<b>Steelville .....</b>	<b>51.2%</b>	<b>+1.3</b>
			DADE		
			<b>Greenfield .....</b>	<b>55.4%</b>	<b>+0.2</b>
			DALLAS		
			<b>Buffalo .....</b>	<b>48.4%</b>	<b>+0.8</b>
			Malden.....	38.0%	+2.1



# Missouri Registry Participation



County/Office Name	FY 20	% of Change	County/Office Name	FY 20	% of Change
<b>DAVIES</b>			<b>JACKSON</b>		
Gallatin .....	23.9%	+4.3	<b>Blue Springs</b> .....	<b>63.9%</b>	<b>+3.2</b>
<b>DENT</b>			Grandview.....	44.2%	-1.8
Salem .....	46.3%	+1.6	<b>Independence</b> .....	<b>51.0%</b>	<b>+1.9</b>
<b>DOUGLAS</b>			Kansas City.....	43.5%	+9.6
Ava .....	45.0%	+1.1	<b>Lee's Summit</b> .....	<b>59.8%</b>	<b>-2.3</b>
<b>DUNKLIN</b>			Raytown.....	39.0%	-1.6
Kennett.....	44.8%	+2.1	<b>Sugar Creek</b> .....	<b>48.1%</b>	<b>+1.0</b>
<b>FRANKLIN</b>			<b>JASPER</b>		
<b>Pacific</b> .....	<b>65.7%</b>	<b>+1.1</b>	<b>Carthage</b> .....	<b>55.2%</b>	<b>+2.7</b>
<b>St. Clair</b> .....	<b>54.4%</b>	<b>+1.6</b>	<b>Joplin</b> .....	<b>60.3%</b>	<b>+1.5</b>
<b>Union</b> .....	<b>59.8%</b>	<b>+0.5</b>	<b>Sarcoixie</b> .....	<b>53.6%</b>	<b>+2.2</b>
<b>Washington</b> .....	<b>66.4%</b>	<b>+4.2</b>	<b>JEFFERSON</b>		
<b>GASCONADE</b>			<b>Arnold</b> .....	<b>57.5%</b>	<b>+0.9</b>
<b>Hermann</b> .....	<b>55.5%</b>	<b>+1.9</b>	<b>DeSoto</b> .....	<b>55.2%</b>	<b>+1.6</b>
<b>Owensville</b> .....	<b>52.7%</b>	<b>+5.5</b>	<b>High Ridge</b> .....	<b>57.1%</b>	<b>+3.2</b>
<b>GENTRY</b>			<b>Imperial</b> .....	<b>58.8%</b>	<b>-0.1</b>
<b>Stanberry</b> .....	<b>61.1%</b>	<b>+1.7</b>	<b>Twin City</b> .....	<b>58.6%</b>	<b>-2.8</b>
<b>GREENE</b>			<b>JOHNSON</b>		
<b>Glenstone</b> .....	<b>55.7%</b>	<b>+0.7</b>	<b>Warrensburg</b> .....	<b>60.4%</b>	<b>+2.4</b>
<b>Republic</b> .....	<b>63.2%</b>	<b>+0.7</b>	<b>KNOX</b>		
<b>South Springfield</b> .....	<b>61.2%</b>	<b>+0.6</b>	<b>Edina</b> .....	<b>48.4%</b>	<b>+5.2</b>
Springfield.....	41.8%	+5.6	<b>LACLEDE</b>		
<b>GRUNDY</b>			<b>Lebanon</b> .....	<b>55.3%</b>	<b>+5.8</b>
Trenton .....	43.3%	-3.4	<b>LAFAYETTE</b>		
<b>HARRISON</b>			<b>Lexington</b> .....	<b>56.7%</b>	<b>+2.7</b>
<b>Bethany</b> .....	<b>53.9%</b>	<b>+2.1</b>	<b>LAWRENCE</b>		
<b>HENRY</b>			<b>Aurora</b> .....	<b>57.8%</b>	<b>+3.6</b>
<b>Clinton</b> .....	<b>54.1%</b>	<b>+3.1</b>	<b>Mount Vernon</b> .....	<b>57.3%</b>	<b>+6.3</b>
<b>HICKORY</b>			<b>LEWIS</b>		
<b>Hermitage</b> .....	<b>51.7%</b>	<b>-1.7</b>	<b>Monticello</b> .....	<b>60.4%</b>	<b>+6.8</b>
<b>HOWARD</b>			<b>LINCOLN</b>		
<b>Fayette</b> .....	<b>50.7%</b>	<b>-4.1</b>	<b>Troy</b> .....	<b>58.5%</b>	<b>+4.1</b>
<b>HOWELL</b>			<b>LINN</b>		
<b>Mountain View</b> .....	<b>47.2%</b>	<b>+0.7</b>	<b>Brookfield</b> .....	<b>57.2%</b>	<b>+6.6</b>
<b>West Plains</b> .....	<b>50.1%</b>	<b>+0.3</b>	<b>LIVINGSTON</b>		
<b>IRON Arcadia</b>			<b>Chillicothe</b> .....	<b>57.2%</b>	<b>+0.9</b>
<b>Valley (aka Ironton)</b> .....	<b>47.0%</b>	<b>+3.8</b>			
Viburnum.....	39.0%	+1.9			



# Missouri Registry Participation

County/Office Name	FY 20	% of Change	County/Office Name	FY 20	% of Change
MACON			OZARK		
<b>Macon</b> .....	<b>54.1%</b>	<b>+1.5</b>	<b>Gainesville</b> .....	<b>50.1%</b>	<b>-0.5</b>
MADISON			PEMISCOT		
<b>Fredericktown</b> .....	<b>48.0%</b>	<b>+1.9</b>	Caruthersville .....	36.9%	17.1
MARIES			PERRY		
<b>Vienna</b> .....	<b>50.9%</b>	<b>+2.4</b>	<b>Perryville</b> .....	<b>47.2%</b>	<b>+2.3</b>
MARION			PETTIS		
<b>Hannibal</b> .....	<b>58.0%</b>	<b>+4.6</b>	<b>Sedalia</b> .....	<b>50.1%</b>	<b>-0.5</b>
<b>Palmyra</b> .....	<b>57.4%</b>	<b>+2.5</b>	PHELPS		
MCDONALD			<b>Rolla</b> .....	<b>54.2%</b>	<b>-0.1</b>
<b>Pineville</b> .....	<b>47.4%</b>	<b>-1.9</b>	PIKE		
MERCER			<b>Bowling Green</b> .....	<b>52.4%</b>	<b>+3.6</b>
<b>Princeton</b> .....	<b>54.7%</b>	<b>+3.2</b>	<b>Louisiana</b> .....	<b>54.2%</b>	<b>-1.6</b>
MILLER			PLATTE		
<b>Eldon</b> .....	<b>55.8%</b>	<b>+2.2</b>	<b>Parkville</b> .....	<b>65.6%</b>	<b>-1.6</b>
MISSISSIPPI			<b>Platte City</b> .....	<b>65.3%</b>	<b>+0.0</b>
Charleston .....	40.1%	+0.0	POLK		
MONITEAU			<b>Bolivar</b> .....	<b>53.4%</b>	<b>+1.7</b>
<b>California</b> .....	<b>47.7%</b>	<b>+0.0</b>	PULASKI		
MONROE			<b>Waynesville</b> .....	<b>54.5%</b>	<b>+0.3</b>
<b>Monroe City</b> .....	<b>56.2%</b>	<b>+1.5</b>	PUTNAM		
<b>Paris</b> .....	<b>52.8%</b>	<b>+5.3</b>	<b>Unionville</b> .....	<b>49.4%</b>	<b>+1.5</b>
MONTGOMERY			RALLS		
<b>Montgomery City</b> .....	<b>59.9%</b>	<b>+0.0</b>	<b>New London</b> .....	<b>49.4%</b>	<b>+0.6</b>
MORGAN			RANDOLPH		
<b>Versailles</b> .....	<b>52.1%</b>	<b>+1.0</b>	<b>Moberly</b> .....	<b>51.9%</b>	<b>-1.0</b>
NEW MADRID			RAY		
New Madrid .....	41.3%	+4.5	<b>Richmond</b> .....	<b>56.1%</b>	<b>+4.2</b>
NEWTON			REYNOLDS		
<b>Neosho</b> .....	<b>51.6%</b>	<b>+2.1</b>	Ellington .....	40.1%	+3.4
NODAWAY			RIPLEY		
<b>Maryville</b> .....	<b>61.4%</b>	<b>-0.1</b>	Doniphan.....	45.1%	+2.8
OREGON			SALINE		
Alton.....	37.3%	-0.5	Marshall .....	42.8%	-5.3
OSAGE			SCOTLAND		
<b>Linn</b> .....	<b>55.5%</b>	<b>-0.3</b>	Memphis .....	45.0%	+1.1



# Missouri Registry Participation



County/Office Name	FY 20	% of Change	County/Office Name	FY 20	% of Change
<b>SCOTT</b>			<b>STONE</b>		
Chaffee .....	49.6%	+0.5	Branson		
Sikeston .....	46.3%	+4.5	West (fka Lakeview) .....	61.4%	+1.6
<b>SHANNON</b>			Crane .....	56.5%	+4.8
Eminence .....	45.5%	+1.1	<b>SULLIVAN</b>		
<b>SHELBY</b>			Milan .....	40.3%	+0.3
Shelbina.....	45.8%	+0.5	<b>TANEY</b>		
<b>ST CHARLES</b>			Branson .....	56.1%	-0.7
Harvester .....	62.3%	+1.0	Forsyth.....	58.5%	+1.0
O'Fallon .....	58.4%	+0.8	<b>TEXAS</b>		
St. Charles.....	54.8%	+1.4	Houston .....	49.0%	+1.6
Wentzville.....	63.0%	+0.9	<b>VERNON</b>		
<b>ST CLAIR</b>			Nevada .....	56.5%	+0.1
Osceola .....	51.5%	-0.6	<b>WARREN</b>		
<b>ST FRANCOIS</b>			Warrenton .....	56.5%	+2.3
Bonne Terre .....	51.8%	+0.4	<b>WASHINGTON</b>		
Farmington.....	44.4%	+4.0	Potosi .....	42.9%	+3.8
<b>ST LOUIS</b>			<b>WAYNE</b>		
Affton .....	55.1%	+2.4	Piedmont .....	47.0%	+0.0
Bridgeton.....	38.3%	-3.4	<b>WEBSTER</b>		
Chesterfield .....	64.5%	+2.6	Marshfield .....	54.1%	-0.5
Clayton .....	59.5%	-0.7	<b>WORTH</b>		
Creve Coeur .....	54.7%	-1.5	Grant City .....	55.0%	+3.8
Des Peres .....	67.0%	+2.9	<b>WRIGHT</b>		
Ferguson.....	22.2%	+0.3	Hartville.....	47.1%	+1.0
Florissant.....	34.1%	+1.7	Mountain Grove .....	44.3%	+2.8
Maplewood .....	65.8%	+4.6			
North County.....	18.3%	+0.2			
Oakville .....	50.7%	+1.6			
Olivette.....	42.1%	+0.0			
Overland.....	36.2%	-1.3			
South County .....	59.3%	+1.9			
West County .....	65.1%	+3.6			
<b>ST LOUIS CITY</b>					
Central West End.....	32.8%	+2.3			
Downtown.....	30.5%	-2.8			
South Kingshighway .....	38.4%	-0.6			
<b>STE GENEVIEVE</b>					
Ste. Genevieve .....	61.0%	+2.2			
<b>STODDARD</b>					
Dexter.....	46.9%	+3.4			

## DATA LIMITATIONS

Registry participation is for July 2019 through June 2020 and is based on the total transactions and number responding "yes" to being placed on the DRS. The percentages were calculated by location independent of contractor; a contractor change or office closure during FY 19 or FY 20 may alter the percentage. Percent of change refers to change from the previous fiscal year. Data is subject to change based on future data submission or correction.



**This page  
was  
intentionally  
left blank.**



# Give Life



## Missouri Organ and Tissue Donor Program

Missouri Department of Health and Senior Services  
P.O. Box 570  
Jefferson City, MO 65102-0570  
573-522-2847 or toll-free 888-497-4564

**[DonateLifeMissouri.org](http://DonateLifeMissouri.org)**  
**[Health.mo.gov/OrganDonor](http://Health.mo.gov/OrganDonor)**

### **AN EQUAL OPPORTUNITY/AFFIRMATIVE ACTION EMPLOYER**

Services provided on a nondiscriminatory basis.  
Alternate forms of this publication for persons with disabilities may be obtained by contacting the Missouri Department of Health and Senior Services at 573-522-2847.  
Individuals who are deaf, hard-of-hearing, or have a speech disability can dial 711 or 1-800-735-2966.