

Children and COVID-19: State Data Report

A joint report from the American Academy of Pediatrics and the Children's Hospital Association

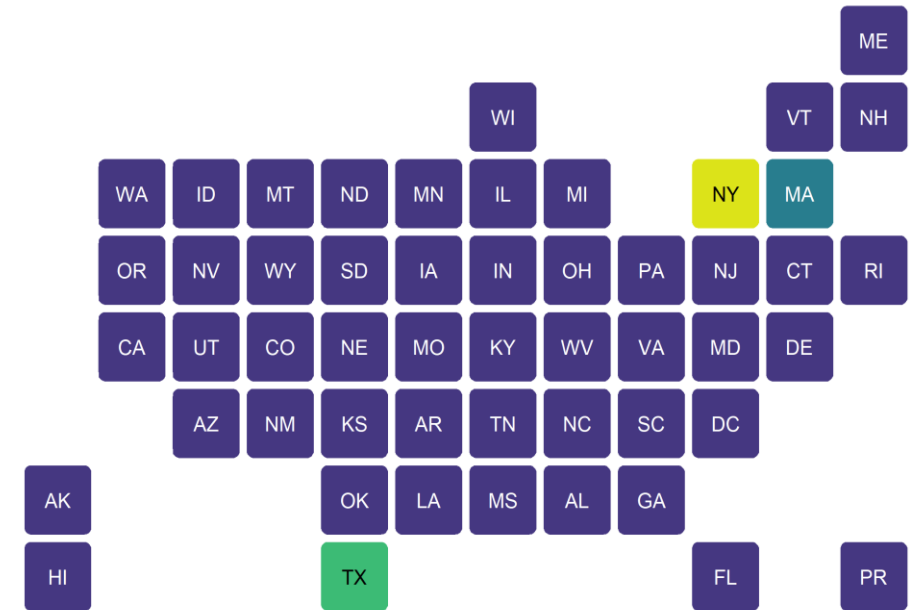
Summary of publicly reported data from 49 states, NYC, DC, PR, and GU

Version: 4/22/21

COVID-19: Available Data for Children

- State-level reports are the best publicly available data on COVID-19 cases in children
- This report summarizes what was available on 4/22/21
- **49 states, NYC, DC, Puerto Rico and Guam** provided age distributions of reported COVID-19 cases
 - 11 states provided age distribution of testing
 - 24 states and NYC provided age distribution of hospitalizations
 - 43 states, NYC, PR and Guam provided age distribution of deaths

Fig 1A: States Reporting Age Distribution of COVID-19 Cases as of 4/22/21



Reporting age distribution of COVID-19 cases:

- Yes: Reported age distribution of cases
- TX: Reported age distribution for only 3% of cases
- NY: Only NYC reported age distribution of cases
- MA: Only reported age distribution of cases added in past 2 weeks

See detail in Appendix: Data from 49 states, NYC, DC, PR, and GU
Analysis by American Academy of Pediatrics and Children's Hospital Association
All data reported by state/local health departments are preliminary and subject to change

Children and COVID-19: Data Limitations

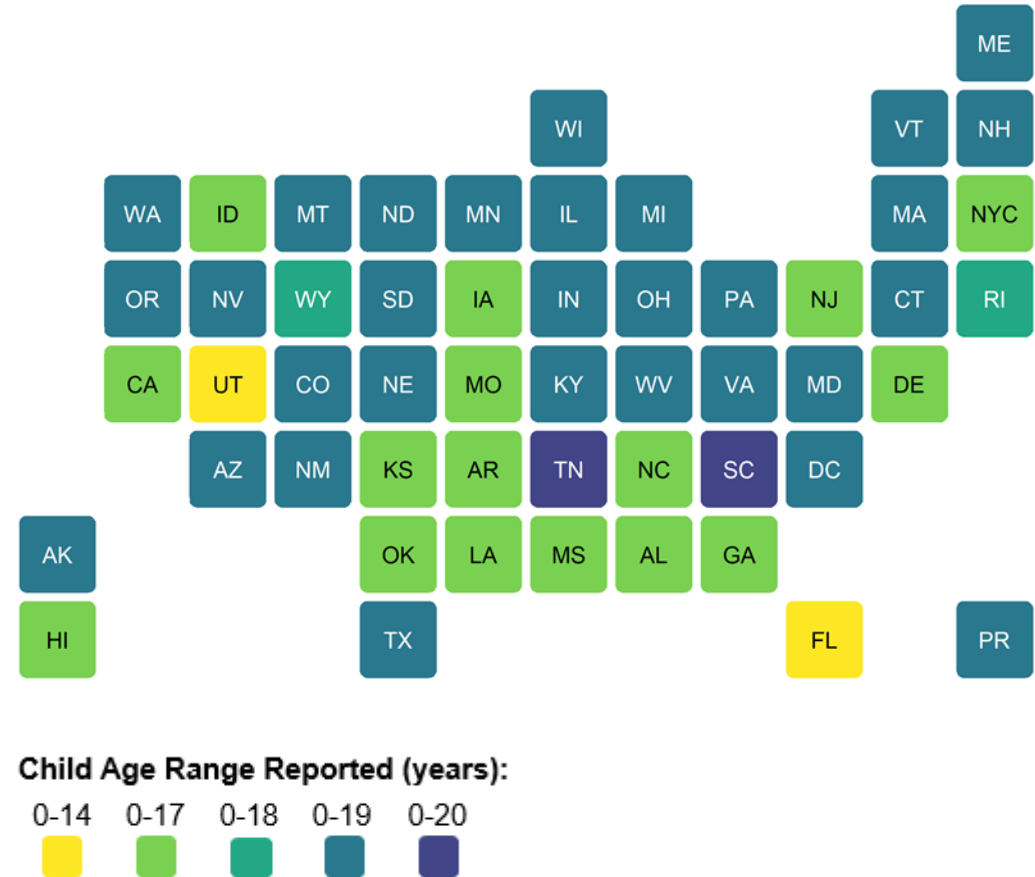
General Limitations

- Format, content, and metrics of reported COVID-19 data differed substantially by state
- Definition of “child”: Age ranges reported for children varied by state (0-14, 0-17, 0-18, 0-19, and 0-20 years; see Fig 1B)
- Unknown: Number of children infected but not tested and confirmed

State-Level Limitations

- TX: Age distribution reported for only 3% of confirmed cases (77,819/2,448,662), resulting in an undercount of child cases; TX is excluded from some figures
- NY: Did not provide age distribution for state-wide cases (NYC only)
- AL: As of 8/13/20, changed definition of child case from 0-24 to 0-17 years; as of 9/17/20, provided age distribution for confirmed cases only
- HI: As of 8/27/20, changed definition of child case from 0-19 to 0-17 years
- MA: As of 9/3/20, revised definition of probable case, leading to a reduction in total case count; reported age distribution of cases added in last two weeks but not for total cases to date
- RI: As of 9/10/20, changed definition of child case from 0-19 to 0-18 years
- MO: As of 10/1/20, changed definition of child cases from 0-19 to 0-17 years
- PR: As of 3/11/21, due to a change in data available, a calculation was required to obtain confirmed and probable child case totals, leading to a reduction in total child case count

Fig 1B: Child Age Ranges of COVID-19 Cases Reported by States as of 4/22/21



See detail in Appendix: Data from 49 states, NYC, DC, PR, and GU; Analysis by American Academy of Pediatrics and Children’s Hospital Association; All data reported by state/local health departments are preliminary and subject to change

Children and COVID-19: 4/22/21

Summary of State-Level Data Provided in this Report

Detail and links to state/local data sources provided in Appendix

Cumulative Number of Child COVID-19 Cases*

- 3,711,075 total child COVID-19 cases reported, and children represented 13.7% (3,711,075/27,001,107) of all cases
- Overall rate: 4,931 cases per 100,000 children in the population

Change in Child COVID-19 Cases*

- 79,886 new child COVID-19 cases were reported the past week from 4/15/21-4/22/21 (3,631,189 to 3,711,075) and children represented 20.9% (79,886/383,194) of the new weekly cases
- Over two weeks, 4/8/21-4/22/21, there was a 5% increase in the cumulated number of child COVID-19 cases (168,383 new cases (3,542,692 to 3,711,075))

Testing (11 states reported)*

- Children made up between 6.0%-19.1% of total state tests, and between 5.3%-33.1% of children tested were tested positive

Hospitalizations (24 states and NYC reported)*

- Children were 1.2%-3.1% of total reported hospitalizations, and between 0.1%-1.9% of all child COVID-19 cases resulted in hospitalization

Mortality (43 states, NYC, PR and GU reported)*

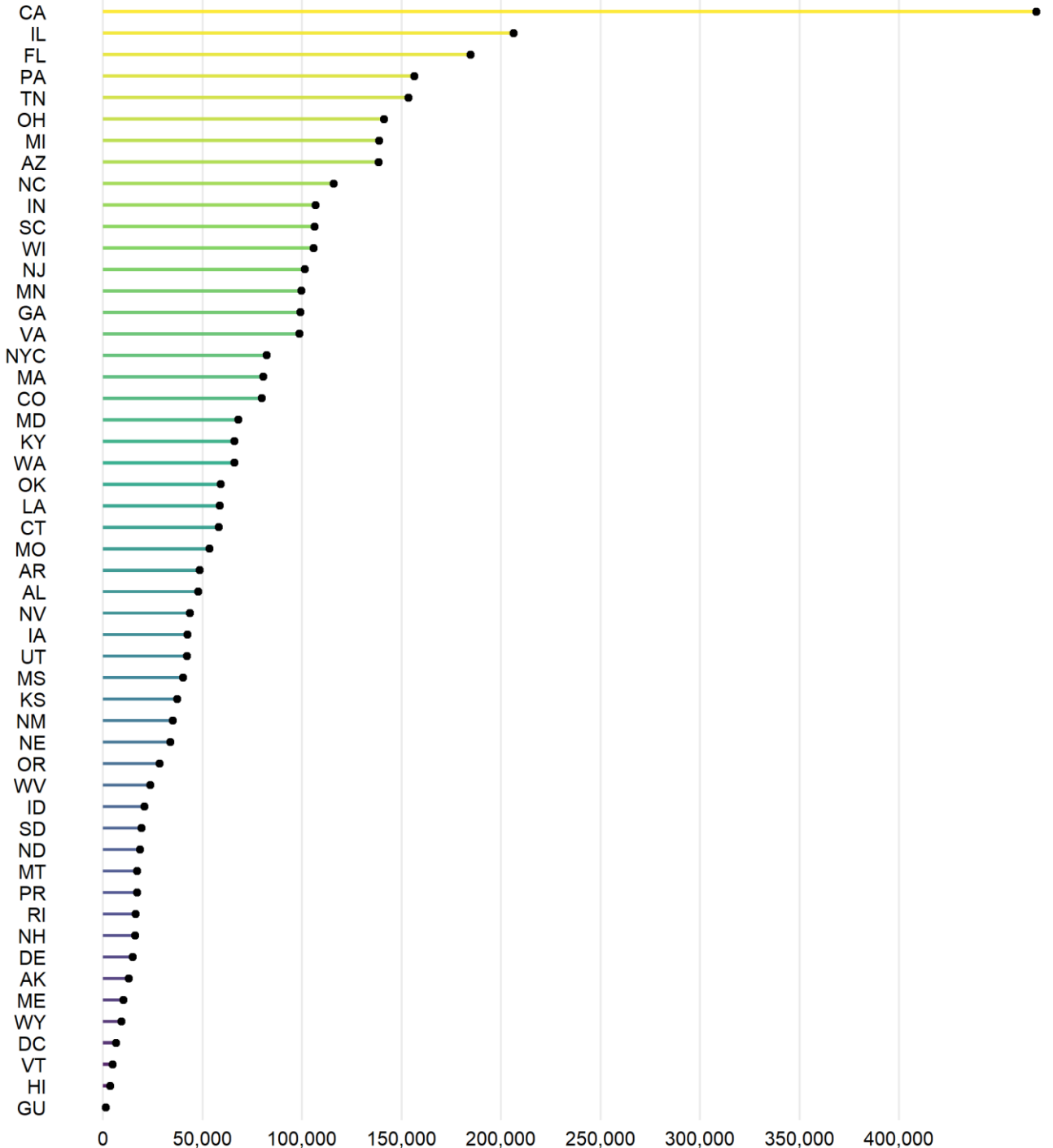
- Children were 0.00%-0.19% of all COVID-19 deaths, and 10 states reported zero child deaths
- In states reporting, 0.00%-0.03% of all child COVID-19 cases resulted in death

See detail in Appendix: Data from 49 states, NYC, DC, PR, and GU; Analysis by American Academy of Pediatrics and Children's Hospital Association

* Note: Data represent cumulative counts since states began reporting; All data reported by state/local health departments are preliminary and subject to change

Fig 2. Cumulative Number of Child COVID-19 Cases: 4/22/21

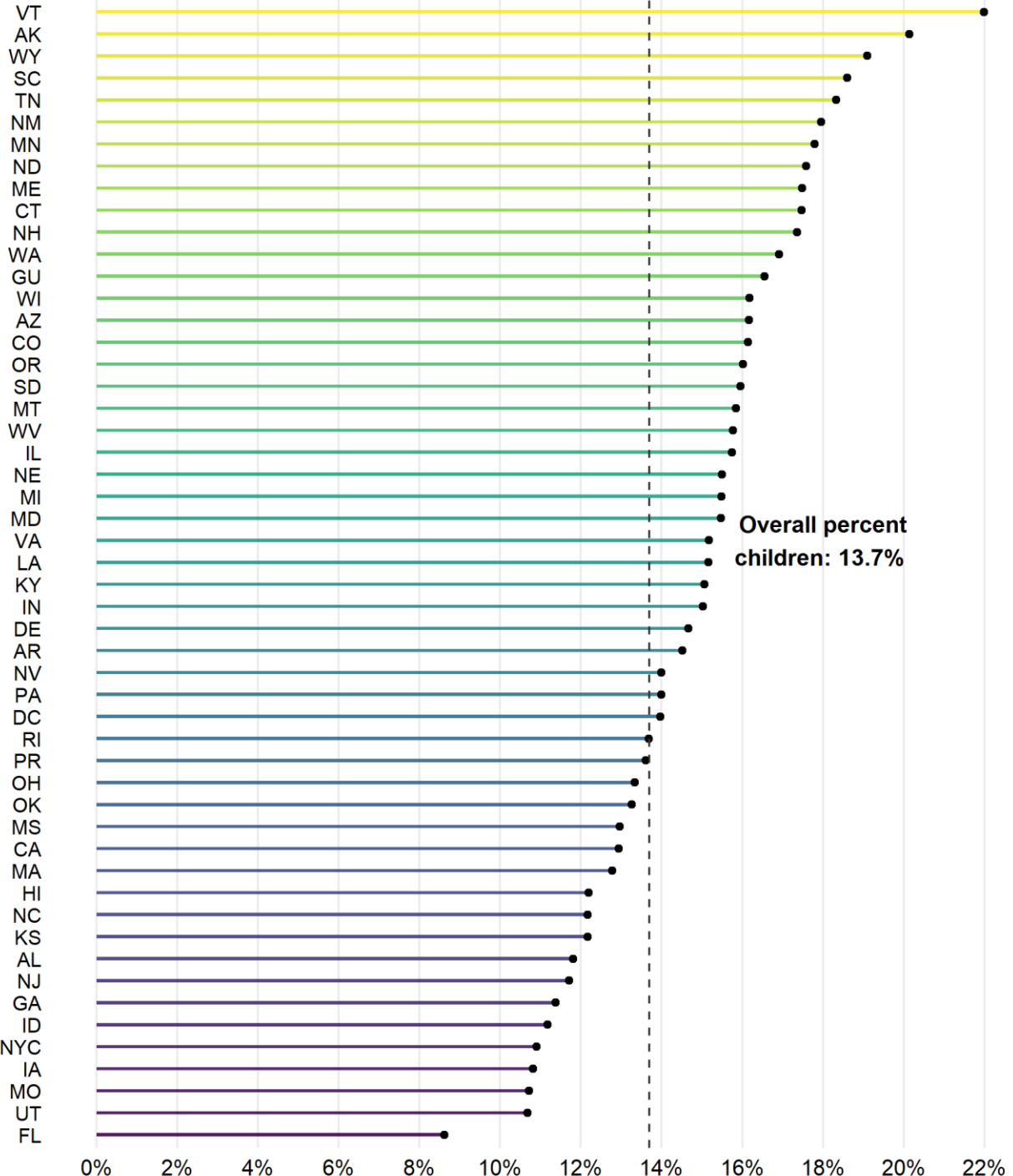
- 3,711,075 total child COVID-19 cases (cumulative)
- Thirteen states reported 100,000+ child cases
- Four states reported fewer than 10,000 child cases



See detail in Appendix: Data from 48 states, NYC, DC, PR, and GU (TX excluded from figure)
 All data reported by state/local health departments are preliminary and subject to change
 Analysis by American Academy of Pediatrics and Children's Hospital Association

Fig 3. Percent of Cumulative COVID-19 Cases that were Children: 4/22/21

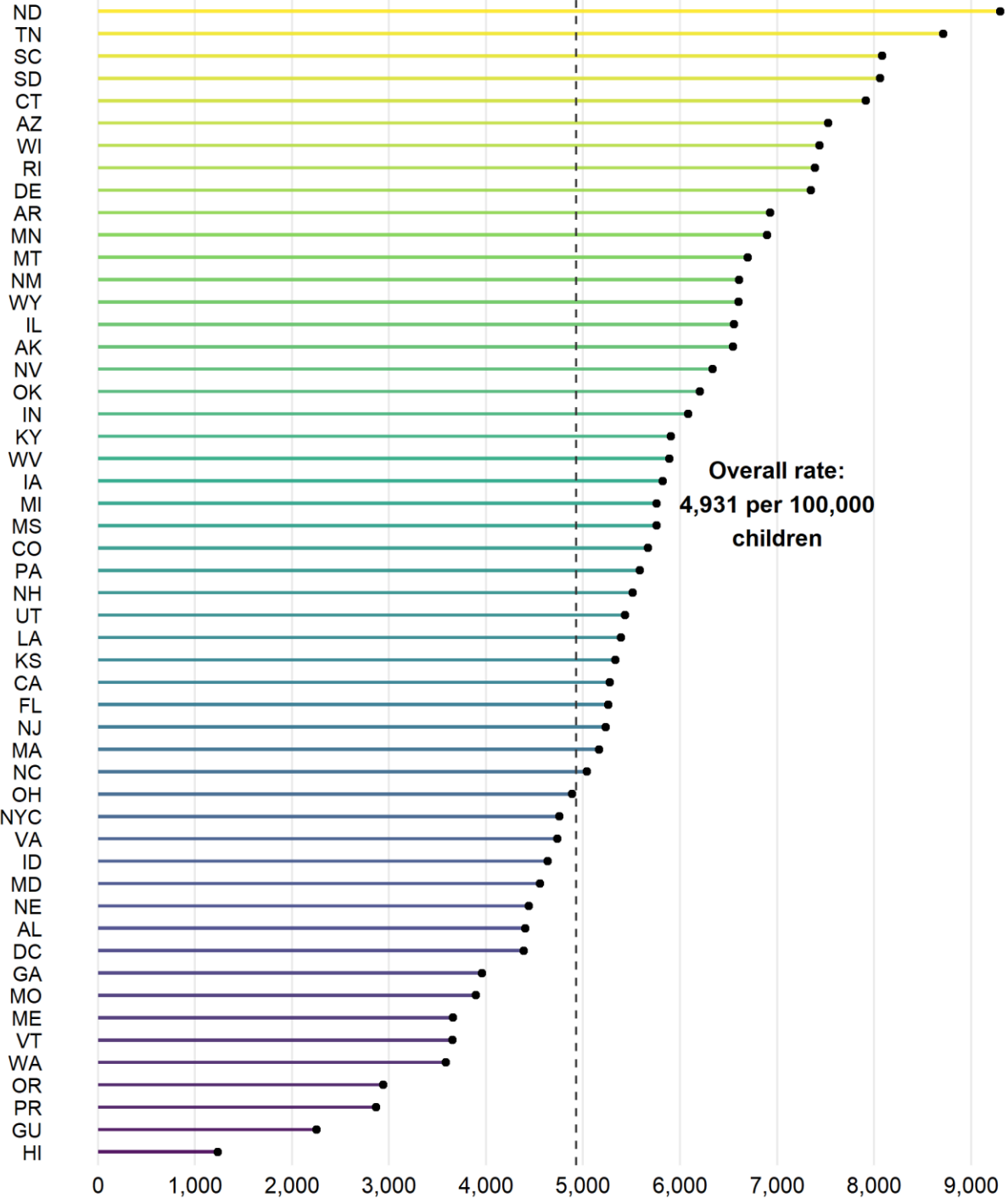
- Children represented 13.7% (3,711,075/27,001,107) of all available cases
- Six states reported 18% or more of cases were children



See detail in Appendix: Data from 48 states, NYC, DC, PR, and GU (TX excluded from figure)
 All data reported by state/local health departments are preliminary and subject to change
 Analysis by American Academy of Pediatrics and Children's Hospital Association

Fig 4. Cumulative COVID-19 Cases per 100,000 Children: 4/22/21

- Calculated using state-level population estimates from US Census Bureau (2019)*
- Overall rate: 4,931 child COVID-19 cases per 100,000 children in the population
- Nine states reported more than 7,000 cases per 100,000

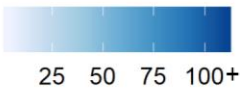
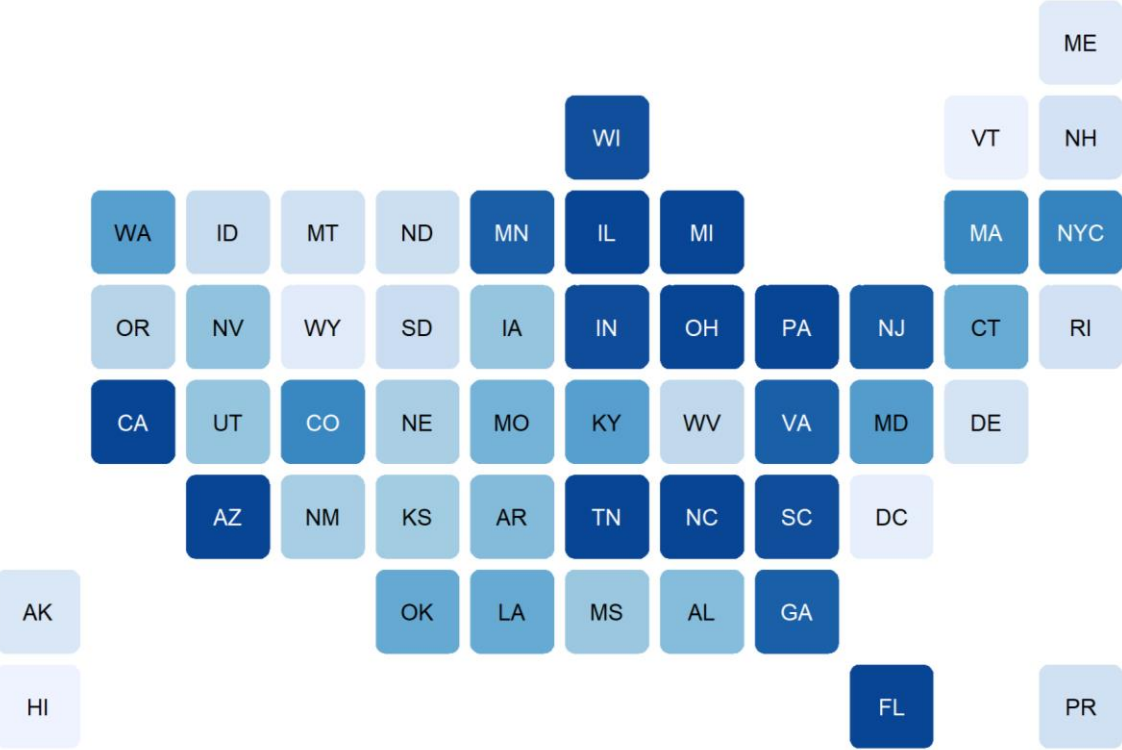


See detail in Appendix: Data from 48 states, NYC, DC, PR, and GU (TX excluded from figure)
 All data reported by state/local health departments are preliminary and subject to change
 Analysis by American Academy of Pediatrics and Children's Hospital Association
 * Source: US Census Bureau, State Population by Characteristics: 2010-2019,
<https://www.census.gov/data/tables/time-series/demo/popest/2010s-state-detail.html>

Fig 5. Cumulative Child COVID-19 Cases and Percent Increase in Child Cases

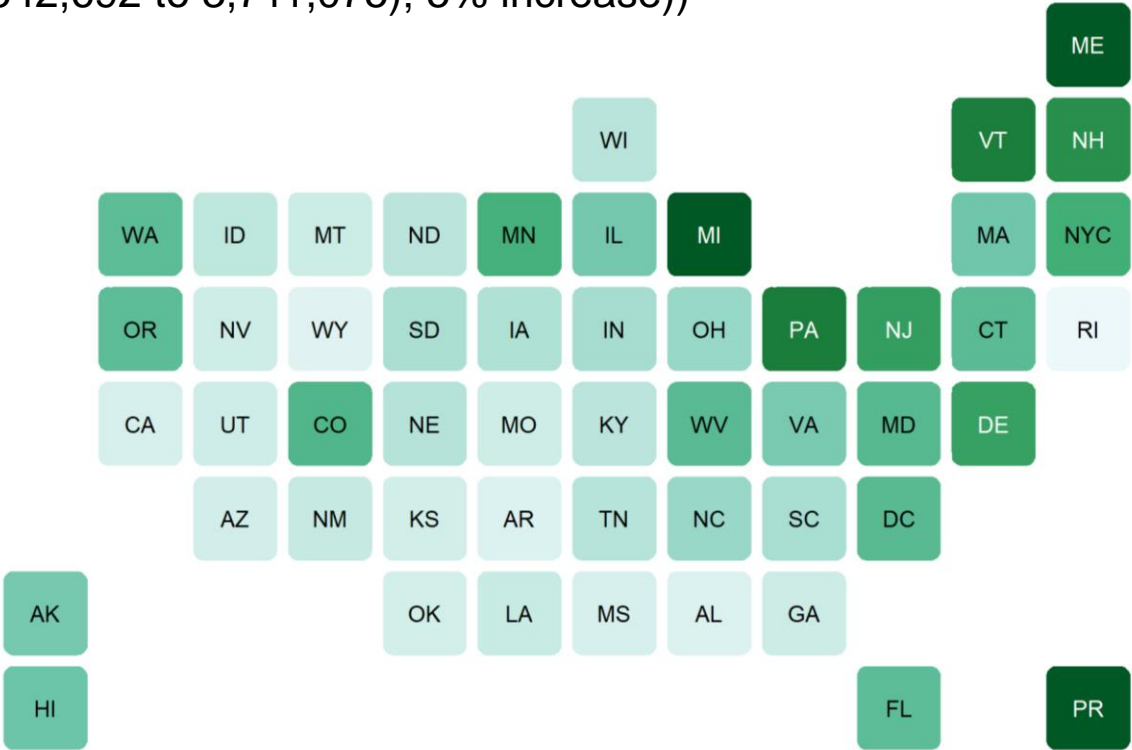
A. Cumulative Child COVID-19 Cases, 4/22/21

13 states with 100,000+ cumulative child cases



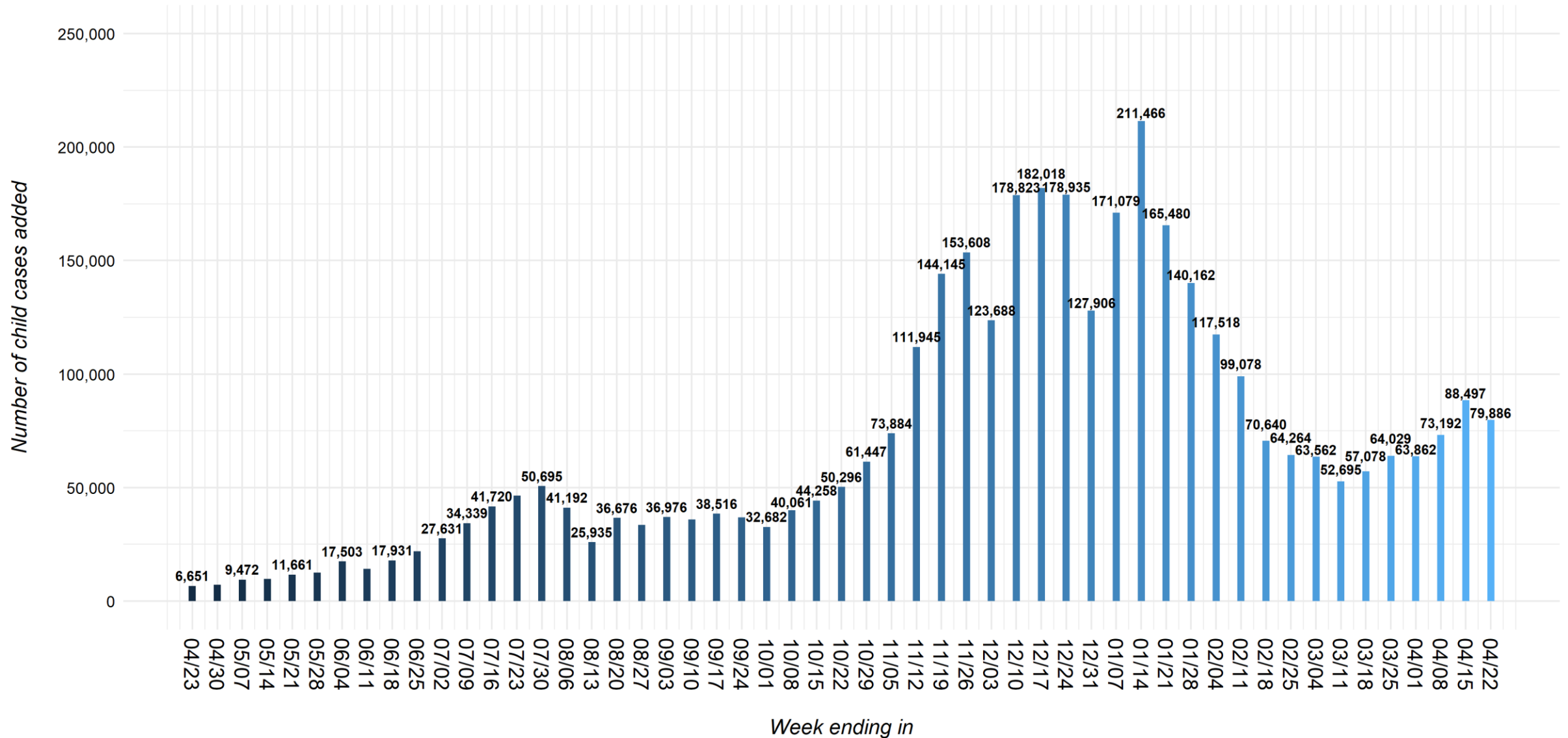
B. Percent Increase in Child Cases, 4/8/21-4/22/21

From 4/8-4/22, there were 168,383 new child cases reported (3,542,692 to 3,711,075); 5% increase)



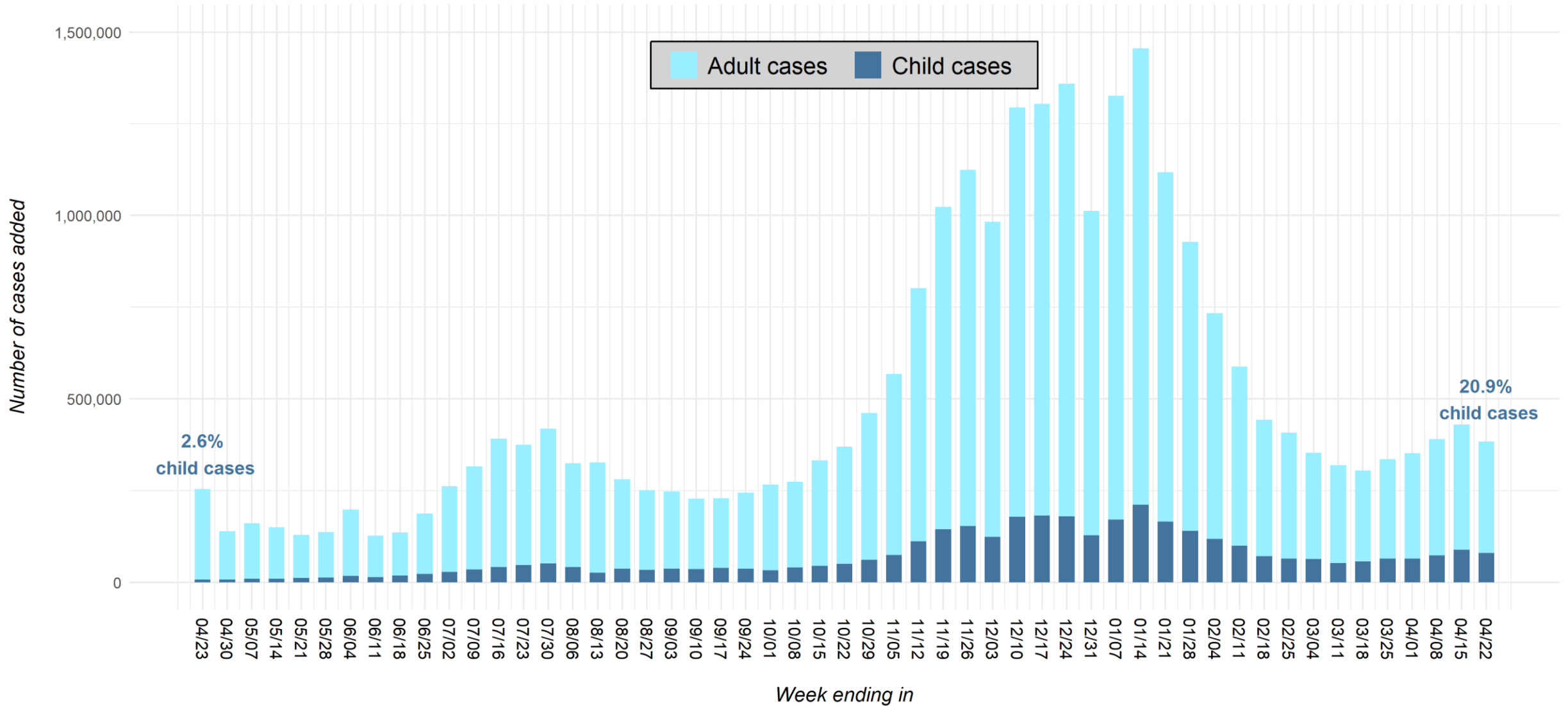
See detail in Appendix: Data from 48 states, NYC, DC, and PR (TX excluded from figures); All data reported by state/local health departments are preliminary and subject to change; Analysis by American Academy of Pediatrics and Children's Hospital Association

Fig 6. United States: Number of Child COVID-19 Cases Added in Past Week*



* Note: 4 states changed their definition of child cases: AL as of 8/13/20, HI as of 8/27/20, RI as of 9/10/20, MO as of 10/1/20; TX reported age for only a small proportion of total cases each week (eg, 3-20%)
 See detail in Appendix: Data from 49 states, NYC, DC, PR and GU
 All data reported by state/local health departments are preliminary and subject to change; Analysis by American Academy of Pediatrics and Children's Hospital Association

Fig 7. United States: Number of COVID-19 Cases Added in Past Week for Children and Adults*



* Note: 4 states changed their definition of child cases: AL as of 8/13/20, HI as of 8/27/20, RI as of 9/10/20, MO as of 10/1/20; TX reported age for only a small proportion of total cases each week (eg, 3-20%)
 See detail in Appendix: Data from 49 states, NYC, DC, PR and GU
 All data reported by state/local health departments are preliminary and subject to change; Analysis by American Academy of Pediatrics and Children's Hospital Association

Appendix Table 1: Case Data Available on 4/22/21

Summary data across the 49 states, NYC, DC, PR, and GU that provided age distribution of reported COVID-19 cases*

Child population, 2019	Cumulative total cases (all ages)	Cumulative child cases	Cumulative percent children of total cases	Cases per 100,000 children
75,266,842	27,001,107	3,711,075	13.7%	4930.6

* Note: Data represent cumulative counts since states began reporting; All data reported by state/local health departments are preliminary and subject to change

Appendix Table 2A: Summary of Child Case Data from 4/16/20 – 4/22/21*

Date	Number of locations reporting age	Cumulative total cases (all ages)	Cumulative child cases [^]	Percent children of total cases	Cases per 100,000 children
4/22/21	49 states, NYC, DC, PR and GU	27,001,107	3,711,075	13.7%	4930.6
4/15/21	49 states, NYC, DC, PR, and GU	26,617,913	3,631,189	13.6%	4824.4
4/8/21	49 states, NYC, DC, PR, and GU	26,188,186	3,542,692	13.5%	4706.8
4/1/21	49 states, NYC, DC, PR, and GU ^o	25,798,537	3,469,500	13.4%	4609.6
3/25/21	49 states, NYC, DC, PR, and GU	25,446,361	3,405,638	13.4%	4524.8
3/18/21	49 states, NYC, DC, PR, and GU	25,111,012	3,341,608	13.3%	4439.7
3/11/21	49 states, NYC, DC, PR, and GU ^{# □}	24,806,402	3,284,531	13.2%	4363.8
3/4/21	49 states, NYC, DC, PR, and GU	24,487,634	3,231,836	13.2%	4293.8
2/25/21	49 states, NYC, DC, PR, and GU	24,134,958	3,168,274	13.1%	4209.4
2/18/21	49 states, NYC, DC, PR, and GU ^{# ~}	23,726,925	3,104,010	13.1%	4124.0
2/11/21	49 states, NYC, DC, PR, and GU	23,284,471	3,033,370	13.0%	4030.2
2/4/21	49 states, NYC, DC, PR, and GU	22,697,315	2,934,292	12.9%	3898.5
1/28/21	49 states, NYC, DC, PR, and GU	21,963,445	2,816,775	12.8%	3742.4
1/21/21	49 states, NYC, DC, PR, and GU	21,036,194	2,676,612	12.7%	3556.2
1/14/21	49 states, NYC, DC, PR, and GU	19,918,714	2,511,132	12.6%	3336.3

* Note: Data represent cumulative counts since states began reporting; All data reported by state/local health departments are preliminary and subject to change

[^] Unknown: number of children infected but not tested and confirmed

^o As of 4/1/21, RI revised case data, resulting in a downward revision of cumulative cases

[#] As of 2/18/21 and 3/11/21, due to only MA data available and calculation required to obtain child total, there is a downward revision of cumulative child cases

[□] As of 3/11/21, due to only PR data available and calculation required to obtain child total, there is a downward revision of cumulative child cases

[~] As of 2/18/21, WY revised case data, resulting in a downward revision of cumulative child cases

Appendix Table 2A, cont.: Summary of Child Case Data from 4/16/20 – 4/22/21*

Date	Number of locations reporting age	Cumulative total cases (all ages)	Cumulative child cases [^]	Percent children of total cases	Cases per 100,000 children
1/7/21	49 states, NYC, DC, PR, and GU	18,463,319	2,299,666	12.5%	3055.4
12/31/20	49 states, NYC, DC, PR, and GU	17,137,295	2,128,587	12.4%	2828.1
12/24/20	49 states, NYC, DC, PR, and GU	16,125,324	2,000,681	12.4%	2658.1
12/17/20	49 states, NYC, DC, PR, and GU	14,766,831	1,821,746	12.3%	2420.4
12/10/20	49 states, NYC, DC, PR, and GU	13,462,337	1,639,728	12.2%	2178.6
12/3/20	49 states, NYC, DC, PR, and GU	12,167,620	1,460,905	12.0%	1941.0
11/26/20	49 states, NYC, DC, PR, and GU	11,184,900	1,337,217	12.0%	1776.6
11/19/20	49 states, NYC, DC, PR, and GU	10,060,749	1,183,609	11.8%	1572.6
11/12/20	49 states, NYC, DC, PR, and GU	9,037,991	1,039,464	11.5%	1381.0
11/5/20	49 states, NYC, DC, PR, and GU	8,236,710	927,518	11.3%	1232.3
10/29/20	49 states, NYC, DC, PR, and GU	7,669,038	853,635	11.1%	1134.1
10/22/20	49 states, NYC, DC, PR, and GU	7,207,186	792,188	11.0%	1052.5
10/15/20	49 states, NYC, DC, PR, and GU	6,837,527	741,891	10.9%	985.7

* Note: Data represent cumulative counts since states began reporting; All data reported by state/local health departments are preliminary and subject to change
[^] Unknown: number of children infected but not tested and confirmed

Appendix Table 2A, cont.: Summary of Child Case Data from 4/16/20 – 4/22/21*

Date	Number of locations reporting age	Cumulative total cases (all ages)	Cumulative child cases [^]	Percent children of total cases	Cases per 100,000 children
10/8/20	49 states, NYC, DC, PR, and GU	6,505,390	697,633	10.7%	926.9
10/1/20	49 states, NYC, DC, PR, and GU [#]	6,231,564	657,572	10.6%	873.7
9/24/20	49 states, NYC, DC, PR, and GU	5,965,268	624,890	10.5%	828.5
9/17/20	49 states, NYC, DC, PR, and GU	5,721,402	587,948	10.3%	779.5
9/10/20	49 states, NYC, DC, PR, and GU	5,493,006	549,432	10.0%	728.5
9/3/20	49 states, NYC, DC, PR, and GU	5,265,157	513,415	9.8%	680.3
8/27/20	49 states, NYC, DC, PR, and GU	5,018,113	476,439	9.5%	631.3
8/20/20	49 states, NYC, DC, PR, and GU	4,766,825	442,785	9.3%	583.2
8/13/20	49 states, NYC, DC, PR, and GU ⁻	4,486,830	406,109	9.1%	538.1
8/6/20	49 states, NYC, DC, PR, and GU	4,159,947	380,174	9.1%	500.7
7/30/20	49 states, NYC, DC, PR, and GU	3,835,573	338,982	8.8%	446.5
7/23/20	49 states, NYC, DC, PR, and GU	3,416,630	288,287	8.4%	379.7
7/16/20	49 states, NYC, DC, PR, and GU	3,042,413	241,904	8.0%	318.6

* Note: Data represent cumulative counts since states began reporting; All data reported by state/local health departments are preliminary and subject to change

[^] Unknown: number of children infected but not tested and confirmed

[#] As of 10/1/20, MO changed definition of child case from 0-19 to 0-17 years, resulting in a downward revision of cumulative child cases

⁻ As of 8/13/20, AL changed definition of child case from 0-24 to 0-17 years, resulting in a downward revision of cumulative child cases

Appendix Table 2A, cont.: Summary of Child Case Data from 4/16/20 – 4/22/21*

Date	Number of locations reporting age	Cumulative total cases (all ages)	Cumulative child cases [^]	Percent children of total cases	Cases per 100,000 children
7/9/20	49 states, NYC, DC, PR, and GU	2,651,066	200,184	7.6%	263.7
7/2/20	49 states, NYC, DC, PR, and GU	2,335,060	165,845	7.1%	218.4
6/25/20	49 states, NYC, DC, PR, and GU	2,073,387	138,213	6.7%	182.0
6/18/20	49 states, NYC, DC, PR, and GU	1,885,905	116,176	6.2%	153.0
6/11/20	49 states, NYC, DC, PR, and GU	1,750,240	98,246	5.6%	129.4
6/4/20	49 states, NYC, DC, PR, and GU	1,623,334	84,016	5.2%	110.7
5/28/20	47 states, NYC, DC, PR, and GU	1,425,154	66,513	4.7%	91.5
5/21/20	47 states, NYC, DC, PR, and GU	1,288,305	54,031	4.2%	74.4
5/14/20	47 states, NYC, DC, PR, and GU	1,159,407	42,370	3.7%	58.3
5/7/20	46 states, NYC, DC, PR, and GU	1,010,112	32,568	3.2%	45.0
4/30/20	47 states, NYC, DC, and PR	849,615	23,096	2.7%	31.8
4/23/20	48 states, NYC, DC, PR, and GU	710,953	15,911	2.2%	21.2
4/16/20	46 states, NYC, and DC	456,923	9,259	2.0%	13.3

* Note: Data represent cumulative counts since states began reporting; All data reported by state/local health departments are preliminary and subject to change
[^] Unknown: number of children infected but not tested and confirmed

Appendix Table 2B: Summary of Child Hospitalization Data from 5/21/20 – 4/22/21*

Date	Number of locations reporting age distribution of hospitalizations	Cumulative total hospitalizations (all ages)	Cumulative child hospitalizations	Percent children of total hospitalizations	Hospitalization rate [^]
4/22/21	24 states and NYC	759,280	15,187	2.0%	0.8%
4/15/21	24 states and NYC~	749,202	14,849	2.0%	0.8%
4/8/21	24 states and NYC	738,793	14,489	2.0%	0.8%
4/1/21	24 states and NYC	722,365	14,179	2.0%	0.8%
3/25/21	24 states and NYC	713,236	13,953	2.0%	0.8%
3/18/21	24 states and NYC	699,071	13,540	1.9%	0.8%
3/11/21	24 states and NYC	690,206	13,283	1.9%	0.8%
3/4/21	23 states and NYC [#]	656,757	12,531	1.9%	0.8%
2/25/21	24 states and NYC	665,821	12,630	1.9%	0.8%
2/18/21	24 states and NYC	652,528	12,329	1.9%	0.8%
2/11/21	24 states and NYC	639,318	11,960	1.9%	0.8%
2/4/21	24 states and NYC	623,006	11,585	1.9%	0.8%
1/28/21	24 states and NYC	605,509	11,192	1.8%	0.8%
1/21/21	24 states and NYC	581,897	10,660	1.8%	0.8%
1/14/21	24 states and NYC	560,125	10,182	1.8%	0.8%
1/7/21	24 states and NYC	533,910	9,661	1.8%	0.9%
12/31/20	24 states and NYC	510,384	9,259	1.8%	0.9%

* Note: Data represent cumulative counts since states began reporting; All data reported by state/local health departments are preliminary and subject to change

[^] Hospitalization rate = number of child hospitalizations / number of child cases

~ As of 4/15/21, NE revised hospitalization data, resulting in a downward revision of cumulative hospitalizations

On 3/4/21 SC not included due to incomplete data, resulting in a downward revision of cumulative hospitalizations for all ages

Appendix Table 2B, cont.: Summary of Child Hospitalization Data from 5/21/20 – 4/22/21*

Date~	Number of locations reporting age distribution of hospitalizations	Cumulative total hospitalizations (all ages)	Cumulative child hospitalizations	Percent children of total hospitalizations	Hospitalization rate^
12/17/20	24 states and NYC	468,643	8,411	1.8%	0.9%
12/10/20	24 states and NYC	445,394	7,913	1.8%	0.9%
12/3/20	24 states and NYC	421,766	7,515	1.8%	1.0%
11/19/20	24 states and NYC	381,141	6,716	1.8%	1.1%
11/12/20	23 states and NYC	362,453	6,337	1.7%	1.2%
11/5/20	24 states and NYC	360,724	6,172	1.7%	1.3%
10/29/20	24 states and NYC	348,296	5,899	1.7%	1.3%
10/22/20	24 states and NYC	324,720	5,585	1.7%	1.3%
10/15/20	24 states and NYC	314,715	5,353	1.7%	1.4%
10/8/20	25 states and NYC#	307,135	5,211	1.7%	1.4%
10/1/20	25 states and NYC	302,896	5,340	1.8%	1.6%
9/24/20	25 states and NYC	294,901	5,164	1.8%	1.7%
9/17/20	25 states and NYC	288,345	5,016	1.7%	1.6%
9/10/20	24 states and NYC	270,034	4,677	1.7%	1.8%
9/3/20	23 states and NYC	257,300	4,321	1.7%	1.9%

* Note: Data represent cumulative counts since states began reporting; All data reported by state/local health departments are preliminary and subject to change
 ~ Data from weeks ending 11/26/20 and 12/24/20 are not included

^ Hospitalization rate = number of child hospitalizations / number of child cases

As of 10/8/20, AZ revised hospitalization data, resulting in a downward revision of cumulative child hospitalizations

Appendix Table 2B, cont.: Summary of Child Hospitalization Data from 5/21/20 – 4/22/21*

Date	Number of locations reporting age distribution of hospitalizations	Cumulative total hospitalizations (all ages)	Cumulative child hospitalizations	Percent children of total hospitalizations	Hospitalization rate [^]
8/27/20	22 states and NYC	243,056	4,163	1.7%	2.1%
8/20/20	21 states and NYC	234,810	4,062	1.7%	2.2%
8/13/20	21 states and NYC	225,893	3,849	1.7%	2.2%
8/6/20	20 states and NYC	206,189	3,276	1.6%	2.2%
7/30/20	20 states and NYC	195,106	2,669	1.4%	2.0%
7/23/20	20 states and NYC	181,345	2,304	1.3%	2.0%
7/16/20	20 states and NYC	172,787	2,074	1.2%	2.1%
7/9/20	20 states and NYC	164,158	1,948	1.2%	2.4%
7/2/20	20 states and NYC	156,640	1,780	1.1%	2.6%
6/25/20	20 states and NYC	151,583	1,663	1.1%	2.9%
6/18/20	19 states and NYC	140,215	1,433	1.0%	3.2%
6/11/20	19 states and NYC	134,600	1,322	1.0%	3.4%
6/4/20	19 states and NYC	128,779	1,231	1.0%	3.4%
5/28/20	16 states and NYC	114,678	1,054	0.9%	3.8%
5/21/20	17 states and NYC	105,665	891	0.8%	3.8%

* Note: Data represent cumulative counts since states began reporting; All data reported by state/local health departments are preliminary and subject to change

[^] Hospitalization rate = number of child hospitalizations / number of child cases

Appendix Table 2C: Summary of Child Mortality Data from 5/21/20 – 4/22/21*

Date	Number of locations reporting age distribution of deaths	Cumulative total deaths (all ages)	Cumulative child deaths	Percent children of total deaths	Percent of child cases resulting in death [^]
4/22/21	43 states, NYC, PR and GU	492,057	296	0.06%	0.01%
4/15/21	43 states, NYC, PR and GU	487,881	297	0.06%	0.01%
4/8/21	43 states, NYC, PR and GU	481,112	292	0.06%	0.01%
4/1/21	43 states, NYC, PR and GU	476,994	284	0.06%	0.01%
3/25/21	43 states, NYC, PR and GU ^o	471,104	279	0.06%	0.01%
3/18/21	43 states, NYC, PR and GU [□]	464,201	268	0.06%	0.01%
3/11/21	43 states, NYC, PR and GU	457,061	266	0.06%	0.01%
3/4/21	43 states, NYC, and GU [#]	444,878	253	0.06%	0.01%
2/25/21	43 states, NYC, and GU	438,657	256	0.06%	0.01%
2/18/21	43 states, NYC, and GU	425,350	247	0.06%	0.01%
2/11/21	43 states, NYC, and GU	407,222	241	0.06%	0.01%
2/4/21	43 states, NYC, and GU	388,204	227	0.06%	0.01%
1/28/21	43 states, NYC, and GU	369,149	215	0.06%	0.01%
1/21/21	43 states, NYC, and GU	348,860	205	0.06%	0.01%
1/14/21	43 states and NYC	330,261	191	0.06%	0.01%
1/7/21	42 states and NYC	297,914	188	0.06%	0.01%

* Note: Data represent cumulative counts since states began reporting; All data reported by state/local health departments are preliminary and subject to change

[^] Number of child deaths / number of child cases

^o As of 3/25/21, VA revised mortality data, resulting in downward revision of cumulative deaths for all ages

[□] As of 3/18/21, KS revised mortality data, resulting in a downward revision of cumulative deaths for all ages

[#] As of 3/4/21, OH revised mortality data, resulting in a downward revision of cumulative deaths for all age groups

Appendix Table 2C, cont.: Summary of Child Mortality Data from 5/21/20 – 4/22/21*

Date~	Number of locations reporting age distribution of deaths	Cumulative total deaths (all ages)	Cumulative child deaths	Percent children of total deaths	Percent of child cases resulting in death^
12/31/20	43 states and NYC	294,443	179	0.06%	0.01%
12/17/20	42 states and NYC	263,833	172	0.07%	0.01%
12/10/20	42 states and NYC	249,442	162	0.06%	0.01%
12/3/20	43 states and NYC	236,996	154	0.06%	0.01%
11/19/20	43 states and NYC	218,007	138	0.06%	0.01%
11/12/20	42 states and NYC	210,441	133	0.06%	0.01%
11/5/20	42 states and NYC	199,564	123	0.06%	0.01%
10/29/20	42 states and NYC	194,175	121	0.06%	0.02%
10/22/20	42 states and NYC	189,250	120	0.06%	0.02%
10/15/20	42 states and NYC	184,294	120	0.07%	0.02%
10/8/20	42 states and NYC	180,014	115	0.06%	0.02%
10/1/20	42 states and NYC	175,423	112	0.06%	0.02%
9/24/20	42 states and NYC	170,971	109	0.06%	0.02%
9/17/20	42 states and NYC	167,019	109	0.07%	0.02%
9/10/20	42 states and NYC	160,856	105	0.07%	0.02%
9/3/20	42 states and NYC	156,053	103	0.07%	0.02%

* Note: Data represent cumulative counts since states began reporting; All data reported by state/local health departments are preliminary and subject to change
 ~ Data from weeks ending 11/26/20 and 12/24/20 are not included
 ^ Number of child deaths / number of child cases

Appendix Table 2C, cont.: Summary of Child Mortality Data from 5/21/20 – 4/22/21*

Date	Number of locations reporting age distribution of deaths	Cumulative total deaths (all ages)	Cumulative child deaths	Percent children of total deaths	Percent of child cases resulting in death [^]
8/27/20	43 states and NYC [#]	152,884	101	0.07%	0.02%
8/20/20	45 states and NYC	154,279	92	0.06%	0.02%
8/13/20	45 states and NYC	147,356	90	0.06%	0.02%
8/6/20	44 states and NYC	139,685	90	0.06%	0.02%
7/30/20	44 states and NYC	133,267	86	0.06%	0.03%
7/23/20	44 states and NYC	121,539	76	0.06%	0.03%
7/16/20	43 states and NYC	119,265	66	0.06%	0.03%
7/9/20	42 states and NYC	112,289	62	0.06%	0.03%
7/2/20	42 states and NYC	108,513	58	0.05%	0.04%
6/25/20	42 states and NYC	104,683	57	0.05%	0.04%
6/18/20	42 states and NYC	101,056	54	0.05%	0.05%
6/11/20	40 states and NYC	89,866	48	0.05%	0.05%
6/4/20	40 states and NYC	91,241	46	0.05%	0.06%
5/28/20	39 states and NYC	82,298	30	0.04%	0.05%
5/21/20	38 states and NYC	71,689	28	0.04%	0.06%

* Note: Data represent cumulative counts since states began reporting; All data reported by state/local health departments are preliminary and subject to change

[^] Number of child deaths / number of child cases

[#] As of 8/27/20, RI, MI, and SC not reporting age distributions of COVID-19 deaths (exact numbers not provided for <5 deaths); mortality data from those states excluded

Appendix Table 3A: Child COVID-19 Case Data Available on 4/22/21*



Click location name to view original data source

Location	Age range	Child population, 2019	Cumulative child cases	Percent children of total cases	Cumulative total cases (all ages)	Cases per 100,000 children
Alabama[^]	0-17	1,088,668	47,951	11.8%	406,020	4404.6
Alaska	0-19	196,852	12,881	20.1%	63,977	6543.5
Arizona	0-19	1,838,598	138,396	16.2%	855,804	7527.3
Arkansas	0-17	700,155	48,497	14.5%	334,061	6926.6
California	0-17	8,894,641	469,047	12.9%	3,624,838	5273.4
Colorado	0-19	1,407,971	79,816	16.1%	494,521	5668.8
Connecticut	0-19	735,193	58,188	17.5%	332,995	7914.7
Delaware	0-17	203,572	14,960	14.7%	101,993	7348.8
District of Columbia	0-19	149,337	6,555	14.0%	46,941	4389.4
Florida	0-14	3,512,139	184,715	8.6%	2,143,358	5259.3
Georgia	0-17	2,503,881	99,112	11.4%	871,460	3958.3
Guam	0-19	57,727	1,301	16.6%	7,859	2253.7
Hawaii	0-17	299,868	3,705	12.2%	30,388	1235.5
Idaho	0-17	448,201	20,766	11.2%	185,759	4633.2
Illinois	0-19	3,145,309	206,203	15.7%	1,309,552	6555.9
Indiana	0-19	1,755,070	106,733	15.0%	710,607	6081.4
Iowa	0-17	726,841	42,320	10.8%	391,125	5822.5
Kansas	0-17	700,250	37,340	12.2%	306,883	5332.4
Kentucky	0-19	1,118,934	66,088	15.1%	438,927	5906.3
Louisiana	0-17	1,087,630	58,608	15.2%	386,574	5388.6
Maine	0-19	281,158	10,288	17.5%	58,868	3659.2
Maryland	0-19	1,489,721	67,896	15.5%	438,789	4557.6
Massachusetts[#]	0-19	1,558,231	80,506	12.8%	630,206	5166.5
Michigan	0-19	2,407,690	138,670	15.5%	895,445	5759.5
Minnesota	0-19	1,445,346	99,701	17.8%	560,450	6898.1
Mississippi	0-17	698,583	40,222	13.0%	310,137	5757.7
Missouri[†]	0-17	1,370,585	53,399	10.7%	498,230	3896.1

* Note: Data represent cumulative counts since states began reporting; All data reported by state/local health departments are preliminary and subject to change;

[^] As of 8/13/20, AL changed definition of child case from 0-24 to 0-17 years
[#] As of 9/3/20, MA only reported age distribution of cases added in last two weeks but not for total cases to date; 4/22/21 totals calculated using MA Dept. of Public Health COVID-19 Dashboard published 4/22/21 (data from 4/4/21-4/17/21) and 4/1/21 version of this report; As of 2/18/21 and 3/11/21, due to only MA data available and calculation required to obtain child total, there is a downward revision of cumulative child cases
[†] As of 10/1/20, MO changed definition of child case from 0-19 to 0-17 years

Appendix Table 3B: Child COVID-19 Case Data Available on 4/22/21*



Click location name to view original data source

Location	Age range	Child population, 2019	Cumulative child cases	Percent children of total cases	Cumulative total cases (all ages)	Cases per 100,000 children
Montana	0-19	254,416	17,042	15.8%	107,537	6698.5
Nebraska	0-19	760,272	33,775	15.5%	217,905	4442.5
Nevada	0-19	688,997	43,645	14.0%	311,750	6334.6
New Hampshire	0-19	291,038	16,040	17.4%	92,395	5511.3
New Jersey	0-17	1,938,578	101,412	11.7%	865,733	5231.3
New Mexico	0-19	531,712	35,144	18.0%	195,783	6609.6
North Carolina	0-17	2,300,715	115,916	12.2%	952,529	5038.3
North Dakota	0-19	200,777	18,672	17.6%	106,218	9299.9
NYC	0-17	1,726,900	82,137	10.9%	753,057	4756.3
Ohio	0-19	2,886,873	141,158	13.3%	1,058,395	4889.7
Oklahoma	0-17	952,238	59,080	13.3%	445,649	6204.3
Oregon	0-19	965,480	28,373	16.0%	177,134	2938.7
Pennsylvania	0-19	2,801,187	156,519	14.0%	1,118,470	5587.6
Puerto Rico[□]	0-19	594,011	17,037	13.6%	125,212	2868.1
Rhode Island[○]	0-18	220,525	16,295	13.7%	119,064	7389.2
South Carolina	0-20	1,314,988	106,275	18.6%	571,369	8081.8
South Dakota	0-19	240,567	19,388	16.0%	121,517	8059.3
Tennessee	0-20	1,762,659	153,539	18.3%	837,833	8710.6
Texas[^]	0-19	8,210,585	5,237	6.7%	77,819	--
Utah	0-14	774,764	42,078	10.7%	393,862	5431.1
Vermont	0-19	134,415	4,909	22.0%	22,325	3652.1
Virginia	0-19	2,087,426	98,805	15.2%	650,981	4733.3
Washington	0-19	1,840,306	65,985	16.9%	390,214	3585.6
West Virginia	0-19	402,473	23,700	15.8%	150,288	5888.7
Wisconsin	0-19	1,422,095	105,761	16.2%	653,670	7437.0
Wyoming[#]	0-18	140,694	9,289	19.1%	48,631	6601.9

* Note: Data represent cumulative counts since states began reporting; All data reported by state/local health departments are preliminary and subject to change
 □ As of 3/11/21, due to only PR data available and calculation required to obtain child total, there is a downward revision of cumulative child cases

○ As of 4/1/21, RI revised case data, resulting in downward revision of cumulative cases

^ Texas reported age for only 3% of total confirmed cases; Cases per 100,000 children omitted for Texas; Data for Texas in this report is limited to the case count for which age is provided

As of 2/18/21, WY revised case data, resulting in a downward revision of cumulative child cases

Appendix Table 4: Child Testing Data Available on 4/22/21*

COVID-19 Testing and Children

Location	Age range	Cumulative total tests (all ages)	Cumulative child tests	Percent children of total tests	Positive rate [^]
Arizona	0-19	4,184,723	745,368	17.8%	18.6%
Illinois	0-19	21,920,359	2,832,523	12.9%	7.3%
Indiana	0-19	9,516,161	1,812,829	19.1%	5.9%
Iowa	0-17	2,132,398	127,944	6.0%	33.1%
Minnesota	0-19	8,810,422	1,269,520	14.4%	7.9%
Nevada	0-19	3,120,860	427,558	13.7%	10.2%
New Hampshire	0-19	1,796,720	301,677	16.8%	5.3%
Rhode Island	0-18	816,397	143,979	17.6%	11.3%
Tennessee	0-20	7,525,551	1,330,128	17.7%	11.5%
West Virginia	0-19	2,643,797	298,485	11.3%	7.9%
Wyoming[#]	0-18	712,622	79,101	11.1%	11.7%

* Note: Data represent cumulative counts since states began reporting; All data reported by state/local health departments are preliminary and subject to change

[^] Positive rate = number of child cases / number of child tests

[#] As of 2/11/21 and 3/18/21, WY revised testing data, resulting in a downward revision of cumulative tests for all age groups

Appendix Table 5: Child Hospitalization Data Available on 4/22/21*

COVID-19-Associated Hospitalizations and Children

Location	Age range	Cumulative child hospitalizations	Cumulative total hospitalizations (all ages)	Percent children of total hospitalizations	Hospitalization rate^
Alaska	0-19	31	1,437	2.2%	0.2%
Arizona[#]	0-19	1,691	59,750	2.8%	1.2%
Colorado	0-19	829	27,103	3.1%	1.0%
Florida	0-14	1,200	88,752	1.4%	0.6%
Georgia	0-17	1,241	60,788	2.0%	1.3%
Hawaii	0-17	28	1,755	1.6%	0.8%
Idaho	0-17	145	8,007	1.8%	0.7%
Indiana	0-19	909	54,557	1.7%	0.9%
Kansas	0-17	162	9,997	1.6%	0.4%
Minnesota	0-19	903	29,477	3.1%	0.9%
Mississippi	0-17	162	9,597	1.7%	0.4%
Nebraska[~]	0-19	121	6,460	1.9%	0.4%
New Hampshire	0-19	16	1,288	1.2%	0.1%
New Jersey	0-17	1,053	76,175	1.4%	1.0%
NYC	0-17	1,549	104,342	1.5%	1.9%
Ohio	0-19	1,362	55,323	2.5%	1.0%
Oregon	0-19	268	9,794	2.7%	0.9%
Rhode Island	0-18	217	9,916	2.2%	1.3%
South Carolina	0-20	447	22,350	2.0%	0.4%
South Dakota	0-19	210	7,261	2.9%	1.1%
Tennessee	0-20	476	20,857	2.3%	0.3%
Utah	0-14	331	15,981	2.1%	0.8%
Virginia	0-19	528	27,917	1.9%	0.5%
Washington	0-19	441	21,632	2.0%	0.7%
Wisconsin	0-19	866	28,764	3.0%	0.8%

* Note: Data represent cumulative counts since states began reporting; All data reported by state/local health departments are preliminary and subject to change

^ Hospitalization rate = number of child hospitalizations / number of child cases

As of 10/8/20, AZ revised hospitalization data, resulting in a downward revision of cumulative child hospitalizations

~ As of 4/15/21, NE revised hospitalization data, resulting in a downward revision of cumulative hospitalizations

Appendix Table 6A: Child Mortality Data Available on 4/22/21*

COVID-19-Associated Deaths and Children

Location	Age range	Cumulative child deaths	Cumulative total deaths (all ages)	Percent children of total deaths	Percent of child cases resulting in death [^]
Alabama[#]	0-17	9	10,807	0.08%	0.02%
Alaska	0-19	0	329	0.00%	0.00%
Arizona	0-19	29	17,199	0.17%	0.02%
Arkansas	0-17	0	5,708	0.00%	0.00%
California	0-17	19	59,992	0.03%	0.00%
Colorado	0-19	12	6,215	0.19%	0.01%
Connecticut	0-19	5	8,027	0.06%	0.01%
Delaware	0-17	2	1,603	0.12%	0.01%
District of Columbia	0-19	0	1,097	0.00%	0.00%
Florida	0-14	6	34,616	0.02%	0.00%
Georgia	0-17	10	17,272	0.06%	0.01%
Guam	0-19	2	136	1.47%	0.15%
Hawaii	0-17	0	470	0.00%	0.00%
Idaho	0-17	0	2,028	0.00%	0.00%
Illinois	0-19	17	21,722	0.08%	0.01%
Indiana	0-19	6	12,840	0.05%	0.01%
Iowa	0-17	2	5,899	0.03%	0.00%
Kansas[□]	0-17	1	4,961	0.02%	0.00%
Kentucky	0-19	2	6,373	0.03%	0.00%
Louisiana	0-17	7	9,418	0.07%	0.01%
Maine	0-19	0	769	0.00%	0.00%
Maryland	0-19	10	8,605	0.12%	0.01%
Massachusetts[~]	0-19	5	17,110	0.03%	0.01%
Minnesota	0-19	2	7,044	0.03%	0.00%

* Note: Data represent cumulative counts since states began reporting; All data reported by state/local health departments are preliminary and subject to change;

[^] Number of child deaths / number of child cases;

[#] As of 8/13/20, AL changed definition of child case, resulting in a downward revision of cumulative child deaths

[□] As of 3/18/21, KS revised mortality data, resulting in a downward revision of cumulative deaths for all ages

[~] As of 9/3/20, MA only reported age distribution of deaths added in last two weeks but not for total deaths to date; 4/22/21 totals calculated using MA Dept. of Public Health COVID-19 Dashboard published 4/22/21 (data from 4/4/21-4/17/21) and 4/1/21 version of this report

Appendix Table 6B: Child Mortality Data Available on 4/22/21*

COVID-19-Associated Deaths and Children

Location	Age range	Cumulative child deaths	Cumulative total deaths (all ages)	Percent children of total deaths	Percent of child cases resulting in death [^]
Mississippi	0-17	3	7,173	0.04%	0.01%
Missouri	0-17	4	8,691	0.05%	0.01%
Nebraska	0-19	4	2,232	0.18%	0.01%
Nevada	0-19	5	5,388	0.10%	0.01%
New Hampshire	0-19	0	1,273	0.00%	0.00%
New Jersey	0-17	7	22,660	0.03%	0.01%
North Carolina	0-17	3	12,480	0.02%	0.00%
North Dakota	0-19	1	1,484	0.07%	0.01%
NYC	0-17	23	27,130	0.08%	0.03%
Ohio[~]	0-19	7	19,033	0.04%	0.00%
Oklahoma	0-17	2	6,716	0.03%	0.00%
Oregon	0-19	2	2,466	0.08%	0.01%
Pennsylvania	0-19	9	25,827	0.03%	0.01%
Puerto Rico	0-19	3	2,238	0.13%	0.02%
South Dakota	0-19	0	1,954	0.00%	0.00%
Tennessee	0-20	12	12,111	0.10%	0.01%
Texas[#]	0-19	51	48,508	0.11%	--
Vermont	0-19	0	243	0.00%	0.00%
Virginia[□]	0-19	4	10,653	0.04%	0.00%
Washington	0-19	7	5,422	0.13%	0.01%
Wisconsin	0-19	3	7,430	0.04%	0.00%
Wyoming	0-18	0	705	0.00%	0.00%

* Note: Data represent cumulative counts since states began reporting; All data reported by state/local health departments are preliminary and subject to change; [^] Number of child deaths / number of child cases;

~ As of 3/4/21, OH revised mortality data, resulting in a downward revision of cumulative deaths for all ages

[#] As of 7/30/20, Texas provided age distribution for all COVID-19-associated deaths; Texas reported age for only 3% of total confirmed cases; Percent of child cases resulting in death omitted for Texas; Data for Texas in this report is limited to the case count for which age is provided

[□] As of 3/25/21, VA revised mortality data, resulting in a downward revision of cumulative deaths for all ages

Frequently Asked Questions

Q: Why are the AAP and CHA collecting this data?

A: Our goal is to provide a weekly snapshot of how COVID-19 is affecting children in the United States. CDC provides a national number of cases by age on its [COVID-19 data tracker](#), but there are no geographic indicators provided and the age data are not released on a regular schedule. Our data collection method allows for tracking the number of child cases weekly, as well as providing publicly reported case numbers for children at the state level.

Q: The age ranges for children in the report are broad – why were these age ranges chosen and are data available for more specific age ranges of children?

A: Each state makes different decisions about how to report the age distribution of COVID-19 cases, and as a result the age range for reported cases varies by state. For the purposes of this report it is not possible to standardize more detailed age ranges for children based on what is publicly available from the states at this time. Please refer to specific state health department websites of interest to see if the state provides more granular detail of cases by age (see report Appendix for links to all state data sources).

Q: What is the definition of a COVID-19 case?

A: COVID-19 cases are defined as persons who have been identified as a confirmed (via a diagnostic molecular test) or probable (via a clinical diagnosis) case. COVID-19 cases are reported by the states, [following reporting standards established by the CDC](#). For more information on the definitions of confirmed and probable cases, see the following resources: [COVID Tracking Project: Definitions](#); [CDC, COVID-19 Data and Surveillance](#).

Q: Why are only a small portion (<5%) of child COVID-19 cases included for Texas?

A: Texas Department of State Health Services reports overall confirmed cases but only a small fraction are included in the age distribution. Other sources for child COVID-19 cases are not included in the report but outline much higher numbers (eg, [Texas Public Schools COVID-19 Data](#)).

Q: Why does the report not provide the percent of child cases that were symptomatic vs. asymptomatic or that had underlying conditions?

A: For the report, we are limited to the data that states are making publicly available. At this time, states are not providing data related to symptoms or underlying conditions and age. CDC provides some information on COVID-19 hospitalizations by age on the [CDC COVID-NET dashboard](#).

Q: For the child population for each state, does that match the listed age range for the state's child COVID-19 data?

A: Yes, the report uses child population numbers that match on directly with the listed age range for children provided by each state. State population numbers were obtained from the [US Census Bureau](#).

Q: The report provides “cumulative totals” for cases, tests, hospitalizations, and deaths for available states. Are those the total numbers since the states began reporting, or since the AAP and CHA started collecting this data?

A: All “cumulative total” data represent cumulative counts since states began reporting COVID-19 data.

Q: How can I learn more about COVID-19 cases in my state?

A: Links to all state data sources are provided in the Appendix.

Q: Are these data final?

A: No. All data reported by state/local health departments included in this report are preliminary and subject to change and revision as health departments gather more information.

Q: Is this the most recent report available? When will a new report be released?

A: The most recent version of the report is available for [download on the AAP website](#). New reports are made available on a weekly basis at [aap.org/CovidStateData](#).

Additional Resources

- For more information about COVID-19 data in your area, we encourage you to reach out to your state and local health department officials
- Visit the [AAP Critical Updates](#) site for daily updates, resources, and guidance on COVID-19 and pediatrics
- For COVID-19 articles for parents in English and Spanish, visit [HealthyChildren.org](#), the parenting website of the AAP

Contact Information

This a joint report from the **American Academy of Pediatrics** and the **Children's Hospital Association**

- For technical questions, please contact the authors at:

Bill Cull, PhD

Director, Health Services Research

American Academy of Pediatrics

wcull@aap.org

Mitch Harris, PhD

Director of Research

Children's Hospital Association

Mitch.Harris@childrenshospitals.org

- For media inquiries, please contact:

Lisa Black

Media Relations

American Academy of Pediatrics

lblack@aap.org

Gillian Ray

External Relations

Children's Hospital Association

Gillian.Ray@childrenshospitals.org

Acknowledgements

Special thanks to the following individuals for their contributions to this report: Alex Rothenburger, MPA (Children's Hospital Association), Vinson Do (Children's Hospital Association), Lynn Olson, PhD (American Academy of Pediatrics), Blake Sisk, PhD (American Academy of Pediatrics), Mary Pat Frintner, MSPH (American Academy of Pediatrics), Liz Gottschlich, MA (American Academy of Pediatrics), Kate Kornfeind, MPH (American Academy of Pediatrics), and Chloe Somberg (American Academy of Pediatrics)