



Chickens and Eggs

ISSN: 1948-9064

Released June 22, 2020, by the National Agricultural Statistics Service (NASS), Agricultural Statistics Board, United States Department of Agriculture (USDA).

May Egg Production Down 5 Percent

United States egg production totaled 9.10 billion during May 2020, down 5 percent from last year. Production included 7.86 billion table eggs, and 1.24 billion hatching eggs, of which 1.15 billion were broiler-type and 85.6 million were egg-type. The average number of layers during May 2020 totaled 386 million, down 4 percent from last year. May egg production per 100 layers was 2,357 eggs, down 2 percent from May 2019.

Total layers in the United States on June 1, 2020 totaled 384 million, down 3 percent from last year. The 384 million layers consisted of 320 million layers producing table or market type eggs, 60.9 million layers producing broiler-type hatching eggs, and 3.16 million layers producing egg-type hatching eggs. Rate of lay per day on June 1, 2020, averaged 75.6 eggs per 100 layers, down 3 percent from June 1, 2019.

Egg-Type Chicks Hatched Down 13 Percent

Egg-type chicks hatched during May 2020 totaled 52.8 million, down 13 percent from May 2019. Eggs in incubators totaled 49.7 million on June 1, 2020, down 4 percent from a year ago.

Domestic placements of egg-type pullet chicks for future hatchery supply flocks by leading breeders totaled 233 thousand during May 2020, up 8 percent from May 2019.

Broiler-Type Chicks Hatched Down 6 Percent

Broiler-type chicks hatched during May 2020 totaled 807 million, down 6 percent from May 2019. Eggs in incubators totaled 699 million on June 1, 2020, down 1 percent from a year ago.

Leading breeders placed 8.19 million broiler-type pullet chicks for future domestic hatchery supply flocks during May 2020, down 7 percent from May 2019.

This page intentionally left blank.

Contents

Average Layers During the Month – United States: 2019-2020.....	4
Egg Production During the Month by Type – United States: 2019-2020.....	4
Egg Production During the Month in Dozens by Type – United States: 2019-2020.....	4
Average Layers During the Month – United States.....	5
Total Egg Production During the Month – United States.....	5
Layers on Hand and Eggs Produced by Type and Molt – United States: April-May 2019 and 2020.....	6
Layers on Hand and Eggs Produced by Type and Molt – United States: May-June 2019 and 2020.....	7
Layers on Hand and Eggs Produced – States and United States: During April 2019 and 2020.....	8
Layers on Hand and Eggs Produced – States and United States: During May 2019 and 2020.....	9
Egg Production by Type – States and United States: April 2019 and 2020.....	10
Egg Production by Type – States and United States: May 2019 and 2020.....	11
Egg Production in Dozens by Type – States and United States: April 2019 and 2020.....	12
Egg Production in Dozens by Type – States and United States: May 2019 and 2020.....	13
Total Layers Molted by Month – United States: 2019-2020.....	14
Total Layers Molted First Day of the Month – States and United States: May 1 and June 1, 2019-2020.....	14
Hatchery Production – United States: 2019 and 2020.....	15
Egg-Type Eggs in Incubators on the First of the Month – United States: 2019 and 2020.....	16
Egg-Type Chicks Hatched by Month – United States: 2019-2020.....	16
Intended Placements of Egg-Type Pullet Chicks for Hatchery Supply Flocks by Month and Total – United States: 2019-2020.....	17
Broiler-Type Eggs in Incubators on the First of the Month – United States: 2019 and 2020.....	17
Broiler-Type Chicks Hatched – States and United States: May 2019 and 2020.....	18
Broiler-Type Chicks Hatched by Month – United States: 2019-2020.....	18
Intended Placements of Broiler-Type Pullet Chicks for Hatchery Supply Flocks by Month and Total: 2019-2020.....	19
Statistical Methodology.....	20
Terms and Definitions of Chickens and Eggs Estimates.....	21
Information Contacts.....	22

Average Layers During the Month – United States: 2019-2020

[Blank data cells indicate estimation period has not yet begun]

Month	2019		2020	
	(1,000 layers)		(1,000 layers)	
December ¹		402,924		404,190
January		402,763		402,081
February		403,552		396,817
March		405,672		395,443
April		404,691		392,308
May		400,109		386,052
June		394,862		
July		392,313		
August		393,317		
September		395,509		
October		398,404		
November		401,764		

¹ December previous year.

Egg Production During the Month by Type – United States: 2019-2020

[Blank data cells indicate estimation period has not yet begun]

Month	Total eggs		Table eggs		Hatching eggs	
	2019	2020	2019	2020	2019	2020
	(million eggs)	(million eggs)	(million eggs)	(million eggs)	(million eggs)	(million eggs)
December ¹	9,692.5	9,809.0	8,515.1	8,601.0	1,177.4	1,208.0
January	9,658.0	9,708.0	8,475.6	8,486.6	1,182.4	1,221.4
February	8,688.7	8,945.0	7,603.8	7,790.9	1,084.9	1,154.1
March	9,674.8	9,534.2	8,469.9	8,294.3	1,204.9	1,239.9
April	9,378.2	9,085.3	8,209.7	7,881.8	1,168.5	1,203.5
May	9,618.0	9,098.3	8,401.2	7,859.4	1,216.8	1,238.9
June	9,215.3		8,037.9		1,177.4	
July	9,453.5		8,240.8		1,212.7	
August	9,490.9		8,286.6		1,204.3	
September	9,222.8		8,061.5		1,161.3	
October	9,663.9		8,458.0		1,205.9	
November	9,496.8		8,329.3		1,167.5	

¹ December previous year.

Egg Production During the Month in Dozens by Type – United States: 2019-2020

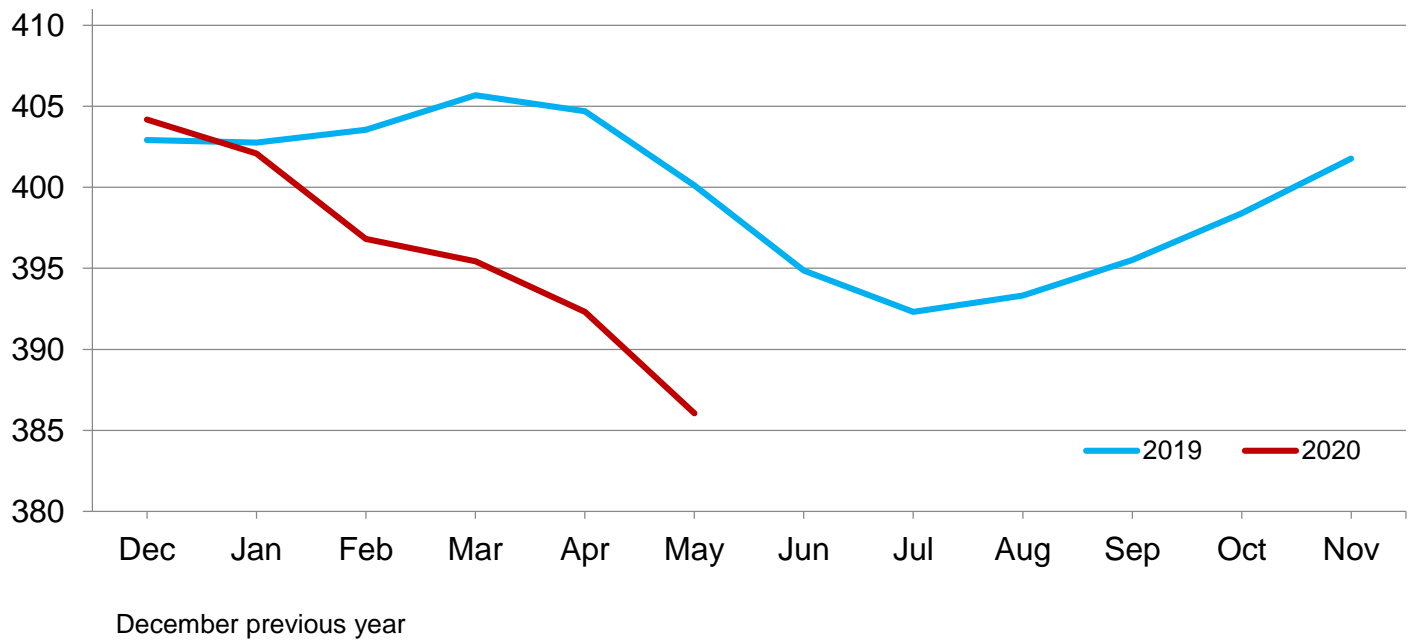
[Blank data cells indicate estimation period has not yet begun]

Month	Total eggs		Table eggs		Hatching eggs	
	2019	2020	2019	2020	2019	2020
	(1,000 dozen eggs)	(1,000 dozen eggs)	(1,000 dozen eggs)	(1,000 dozen eggs)	(1,000 dozen eggs)	(1,000 dozen eggs)
December ¹	807,707.9	817,416.3	709,591.3	716,749.8	98,116.6	100,666.5
January	804,833.1	808,999.8	706,299.8	707,216.7	98,533.3	101,783.1
February	724,058.2	745,416.1	633,650.0	649,241.5	90,408.2	96,174.6
March	806,233.1	794,516.7	705,824.9	691,191.6	100,408.2	103,325.1
April	781,516.3	757,107.8	684,141.5	656,816.3	97,374.8	100,291.5
May	801,499.8	758,191.3	700,099.8	654,949.8	101,400.0	103,241.5
June	767,941.8		669,825.2		98,116.6	
July	787,791.3		686,733.3		101,058.0	
August	790,908.3		690,550.2		100,358.1	
September	768,566.2		671,791.1		96,775.1	
October	805,325.0		704,833.4		100,491.6	
November	791,399.9		694,108.5		97,291.4	

¹ December previous year.

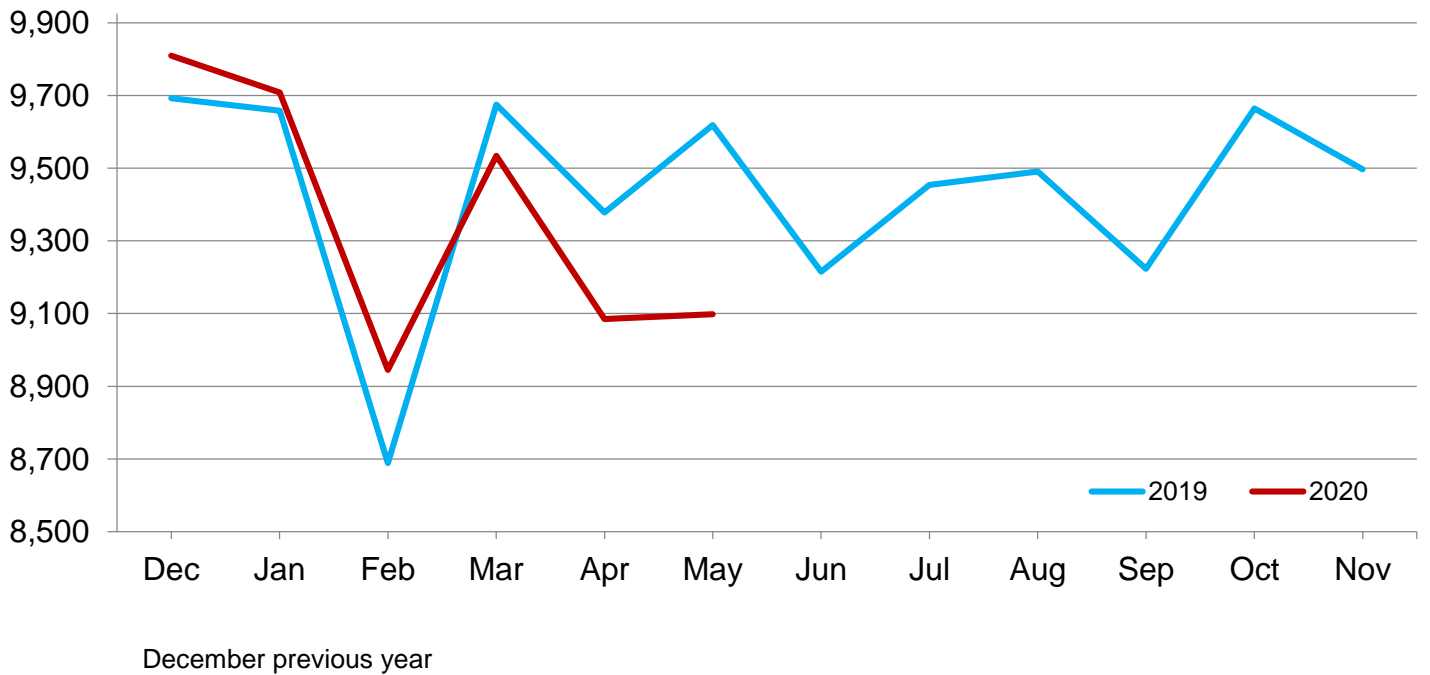
Average Layers During the Month – United States

Million layers



Total Egg Production During the Month – United States

Million eggs



Layers on Hand and Eggs Produced by Type and Molt – United States: April-May 2019 and 2020

Item	2019	2020	2020 as percent of 2019
Layers during April			
Total layers 1,000	404,691	392,308	97
Table egg type 1,000	341,635	327,264	96
Hatching egg type 1,000	63,056	65,044	103
Broiler-type hatching 1,000	59,565	61,677	104
Egg-type hatching 1,000	3,491	3,367	96
Eggs per 100 layers during April			
Total layers number	2,317	2,316	100
Table egg type number	2,403	2,408	100
Hatching egg type number	1,853	1,850	100
Broiler-type hatching number	1,815	1,811	100
Egg-type hatching number	2,495	2,575	103
Eggs produced during April			
Total layers million	9,378.2	9,085.3	97
Table egg type million	8,209.7	7,881.8	96
Hatching egg type million	1,168.5	1,203.5	103
Broiler-type hatching million	1,081.4	1,116.8	103
Egg-type hatching million	87.1	86.7	100
Eggs produced during April			
Total layers 1,000 dozen	781,516.3	757,107.8	97
Table egg type 1,000 dozen	684,141.5	656,816.3	96
Hatching egg type 1,000 dozen	97,374.8	100,291.5	103
Broiler-type hatching 1,000 dozen	90,116.7	93,066.5	103
Egg-type hatching 1,000 dozen	7,258.1	7,225.0	100
Layers on May 1			
Total layers 1,000	402,890	388,282	96
Table egg type 1,000	339,676	323,394	95
Hatching egg type 1,000	63,214	64,888	103
Broiler-type hatching 1,000	59,625	61,546	103
Egg-type hatching 1,000	3,589	3,342	93
Eggs per 100 layers on May 1			
Total layers number	77.1	76.4	99
Table egg type number	80.0	79.3	99
Hatching egg type number	61.8	61.7	100
Broiler-type hatching number	60.6	60.5	100
Egg-type hatching number	81.5	84.5	104
Molted layers on May 1			
Being molted percent	2.5	3.5	140
Molt completed percent	13.1	11.0	84
Layers sold for slaughter during April 1,000	15,216.4	14,552.1	96
Layers rendered, died, destroyed, composted or disappeared for any reason during April 1,000	13,161.0	18,340.5	139
Pullets on May 1 1,000	126,160	125,338	99
Pullets added during April ¹ 1,000	28,860.8	27,462.2	95

¹ Pullet chicks less than 3 days old added to pullet flocks.

Layers on Hand and Eggs Produced by Type and Molt – United States: May-June 2019 and 2020

Item	2019	2020	2020 as percent of 2019
Layers during May			
Total layers 1,000	400,109	386,052	96
Table egg type 1,000	336,668	321,581	96
Hatching egg type 1,000	63,441	64,471	102
Broiler-type hatching 1,000	59,860	61,220	102
Egg-type hatching 1,000	3,581	3,251	91
Eggs per 100 layers during May			
Total layers number	2,404	2,357	98
Table egg type number	2,495	2,444	98
Hatching egg type number	1,918	1,922	100
Broiler-type hatching number	1,880	1,884	100
Egg-type hatching number	2,547	2,633	103
Eggs produced during May			
Total layers million	9,618.0	9,098.3	95
Table egg type million	8,401.2	7,859.4	94
Hatching egg type million	1,216.8	1,238.9	102
Broiler-type hatching million	1,125.6	1,153.3	102
Egg-type hatching million	91.2	85.6	94
Eggs produced during May			
Total layers 1,000 dozen	801,499.8	758,191.3	95
Table egg type 1,000 dozen	700,099.8	654,949.8	94
Hatching egg type 1,000 dozen	101,400.0	103,241.5	102
Broiler-type hatching 1,000 dozen	93,800.0	96,108.3	102
Egg-type hatching 1,000 dozen	7,600.0	7,133.2	94
Layers on June 1			
Total layers 1,000	397,289	383,787	97
Table egg type 1,000	333,642	319,753	96
Hatching egg type 1,000	63,647	64,034	101
Broiler-type hatching 1,000	60,084	60,879	101
Egg-type hatching 1,000	3,563	3,155	89
Eggs per 100 layers on June 1			
Total layers number	77.9	75.6	97
Table egg type number	80.9	78.3	97
Hatching egg type number	61.9	62.2	100
Broiler-type hatching number	60.7	61.0	100
Egg-type hatching number	82.2	85.7	104
Molted layers on June 1			
Being molted percent	2.0	4.4	220
Molt completed percent	13.3	11.6	87
Layers sold for slaughter during May 1,000	18,585.5	17,519.7	94
Layers rendered, died, destroyed, composted or disappeared for any reason during May 1,000	12,698.2	12,605.9	99
Pullets on June 1 1,000	129,832	122,676	94
Pullets added during May ¹ 1,000	30,880.6	25,128.9	81

¹ Pullet chicks less than 3 days old added to pullet flocks.

Layers on Hand and Eggs Produced – States and United States: During April 2019 and 2020

State	Table egg layers in flocks 30,000 and above		Total layers		Eggs per 100 for total layers	
	2019	2020	2019	2020	2019	2020
	(1,000 layers)	(1,000 layers)	(1,000 layers)	(1,000 layers)	(eggs)	(eggs)
Alabama	1,459	1,355	10,321	10,591	1,835	1,879
Arkansas	(D)	(D)	14,899	15,390	2,008	1,975
California	12,876	12,829	13,554	13,545	2,296	2,427
Colorado	4,516	4,955	5,029	5,463	2,442	2,478
Georgia	10,067	9,567	20,581	20,231	2,074	2,106
Illinois	5,921	5,339	6,456	5,907	2,314	2,428
Indiana	33,718	33,194	34,941	34,427	2,415	2,452
Iowa	57,558	50,497	59,315	52,410	2,366	2,344
Kentucky	(D)	(D)	5,598	5,918	2,176	2,220
Maryland	2,417	2,455	2,614	2,659	2,433	2,448
Michigan	15,868	14,135	16,172	14,430	2,376	2,450
Minnesota	10,582	7,973	11,159	8,534	2,457	2,516
Mississippi	(D)	(D)	5,736	5,700	2,035	2,077
Missouri	7,968	7,761	13,020	12,934	2,359	2,411
Nebraska	8,341	7,858	8,622	8,462	2,405	2,200
New York	4,829	4,981	5,369	5,529	2,481	2,523
North Carolina	6,477	7,030	15,037	15,623	2,047	2,107
Ohio	35,853	34,112	37,041	35,323	2,489	2,290
Oklahoma	(D)	(D)	3,073	2,887	1,907	1,915
Oregon	2,146	2,156	2,339	2,327	2,510	2,437
Pennsylvania	27,020	27,988	29,591	30,625	2,401	2,439
South Carolina	2,771	2,638	4,075	3,961	2,226	2,148
South Dakota	2,799	2,620	2,854	2,675	2,512	2,531
Texas	(D)	(D)	22,776	23,294	2,253	2,247
Utah	4,901	4,603	4,953	4,655	2,461	2,496
Virginia	849	866	2,690	2,692	2,286	2,043
Washington	6,697	6,471	6,862	6,635	2,477	2,609
Wisconsin	6,186	6,454	7,295	7,571	2,398	2,521
Other States ¹	26,628	25,798	32,719	31,910	2,332	2,341
United States	326,165	311,579	404,691	392,308	2,317	2,316

(D) Withheld to avoid disclosing data for individual operations.

¹ Includes data for States not published in this table.

Layers on Hand and Eggs Produced – States and United States: During May 2019 and 2020

State	Table egg layers in flocks 30,000 and above		Total layers		Eggs per 100 for total layers	
	2019	2020	2019	2020	2019	2020
	(1,000 layers)	(1,000 layers)	(1,000 layers)	(1,000 layers)	(eggs)	(eggs)
Alabama	1,436	1,328	10,303	10,523	1,903	1,936
Arkansas	(D)	(D)	14,951	15,403	2,057	2,033
California	12,784	12,707	13,460	13,434	2,385	2,428
Colorado	4,499	5,053	5,012	5,561	2,540	2,597
Georgia	9,810	9,596	20,220	20,112	2,099	2,045
Illinois	5,869	5,280	6,406	5,829	2,582	2,445
Indiana	33,304	32,160	34,537	33,357	2,432	2,534
Iowa	56,857	48,103	58,610	50,049	2,509	2,373
Kentucky	(D)	(D)	5,611	5,967	2,196	2,256
Maryland	2,417	2,449	2,614	2,653	2,529	2,544
Michigan	15,473	13,864	15,767	14,159	2,491	2,538
Minnesota	10,485	7,967	11,057	8,513	2,590	2,440
Mississippi	(D)	(D)	5,739	5,606	2,100	2,108
Missouri	7,491	7,946	12,554	13,120	2,523	2,482
Nebraska	8,494	7,848	8,866	8,433	2,516	1,970
New York	4,977	5,019	5,520	5,576	2,511	2,631
North Carolina	6,478	7,006	15,095	15,529	2,145	2,182
Ohio	34,814	32,858	35,996	34,070	2,534	2,265
Oklahoma	(D)	(D)	3,066	2,734	1,983	1,993
Oregon	2,080	2,152	2,273	2,323	2,640	2,514
Pennsylvania	27,288	27,354	29,931	29,968	2,507	2,543
South Carolina	2,541	2,596	3,847	3,895	2,249	2,226
South Dakota	2,710	2,630	2,765	2,685	2,716	2,536
Texas	(D)	(D)	22,078	22,920	2,316	2,342
Utah	4,819	4,737	4,871	4,789	2,542	2,610
Virginia	828	865	2,693	2,690	2,406	2,271
Washington	6,750	6,537	6,915	6,701	2,528	2,634
Wisconsin	6,206	6,471	7,311	7,578	2,608	2,556
Other States ¹	25,938	25,778	32,041	31,875	2,384	2,401
United States	321,198	305,896	400,109	386,052	2,404	2,357

(D) Withheld to avoid disclosing data for individual operations.

¹ Includes data for States not published in this table.

Egg Production by Type – States and United States: April 2019 and 2020

[Data by type of flock not shown for some States to avoid disclosing individual operations, data included in United States totals]

State	Total production		Table eggs		Hatching eggs	
	2019	2020	2019	2020	2019	2020
	(million eggs)	(million eggs)	(million eggs)	(million eggs)	(million eggs)	(million eggs)
Alabama	189.4	199.0	34.3	34.3	155.1	164.7
Arkansas	299.1	303.9	(D)	(D)	(D)	(D)
California	311.2	328.8	(D)	(D)	(D)	(D)
Colorado	122.8	135.4	(D)	(D)	(D)	(D)
Georgia	426.8	426.1	236.4	231.5	190.4	194.6
Illinois	149.4	143.4	147.0	139.4	2.4	4.0
Indiana	843.9	844.1	828.5	829.2	15.4	14.9
Iowa	1,403.1	1,228.7	1,381.6	1,203.9	21.5	24.8
Kentucky	121.8	131.4	(D)	(D)	(D)	(D)
Maryland	63.6	65.1	62.3	63.6	1.3	1.5
Michigan	384.2	353.5	(D)	(D)	(D)	(D)
Minnesota	274.2	214.7	266.1	207.1	8.1	7.6
Mississippi	116.7	118.4	(D)	(D)	(D)	(D)
Missouri	307.2	311.9	272.5	275.9	34.7	36.0
Nebraska	207.4	186.2	202.3	174.5	5.1	11.7
New York	133.2	139.5	(D)	(D)	(D)	(D)
North Carolina	307.8	329.2	154.4	174.7	153.4	154.5
Ohio	921.8	808.8	(D)	(D)	(D)	(D)
Oklahoma	58.6	55.3	(D)	(D)	(D)	(D)
Oregon	58.7	56.7	58.7	56.7	-	-
Pennsylvania	710.5	747.0	681.7	716.5	28.8	30.5
South Carolina	90.7	85.1	68.5	62.6	22.2	22.5
South Dakota	71.7	67.7	71.7	67.7	-	-
Texas	513.1	523.3	(D)	(D)	(D)	(D)
Utah	121.9	116.2	121.9	116.2	-	-
Virginia	61.5	55.0	32.0	24.8	29.5	30.2
Washington	170.0	173.1	(D)	(D)	(D)	(D)
Wisconsin	174.9	190.9	169.3	184.7	5.6	6.2
Other States ¹	763.0	746.9	688.3	671.5	74.7	75.4
United States	9,378.2	9,085.3	8,209.7	7,881.8	1,168.5	1,203.5

- Represents zero.

(D) Withheld to avoid disclosing data for individual operations.

¹ Not published separately to avoid disclosing individual operations.

Egg Production by Type – States and United States: May 2019 and 2020

[Data by type of flock not shown for some States to avoid disclosing individual operations, data included in United States totals]

State	Total production		Table eggs		Hatching eggs	
	2019	2020	2019	2020	2019	2020
	(million eggs)	(million eggs)	(million eggs)	(million eggs)	(million eggs)	(million eggs)
Alabama	196.1	203.7	36.6	33.7	159.5	170.0
Arkansas	307.5	313.1	(D)	(D)	(D)	(D)
California	321.0	326.2	(D)	(D)	(D)	(D)
Colorado	127.3	144.4	(D)	(D)	(D)	(D)
Georgia	424.4	411.2	227.9	211.5	196.5	199.7
Illinois	165.4	142.5	162.8	138.9	2.6	3.6
Indiana	840.0	845.2	824.8	830.6	15.2	14.6
Iowa	1,470.7	1,187.6	1,448.1	1,161.8	22.6	25.8
Kentucky	123.2	134.6	(D)	(D)	(D)	(D)
Maryland	66.1	67.5	64.7	65.8	1.4	1.7
Michigan	392.8	359.4	(D)	(D)	(D)	(D)
Minnesota	286.4	207.7	278.4	200.2	8.0	7.5
Mississippi	120.5	118.2	(D)	(D)	(D)	(D)
Missouri	316.8	325.6	280.4	287.5	36.4	38.1
Nebraska	223.1	166.1	217.1	154.4	6.0	11.7
New York	138.6	146.7	(D)	(D)	(D)	(D)
North Carolina	323.8	338.8	164.7	178.5	159.1	160.3
Ohio	912.3	771.8	(D)	(D)	(D)	(D)
Oklahoma	60.8	54.5	(D)	(D)	(D)	(D)
Oregon	60.0	58.4	60.0	58.4	-	-
Pennsylvania	750.4	762.0	719.1	731.4	31.3	30.6
South Carolina	86.5	86.7	63.4	63.4	23.1	23.3
South Dakota	75.1	68.1	75.1	68.1	-	-
Texas	511.3	536.7	(D)	(D)	(D)	(D)
Utah	123.8	125.0	123.8	125.0	-	-
Virginia	64.8	61.1	33.7	29.2	31.1	31.9
Washington	174.8	176.5	(D)	(D)	(D)	(D)
Wisconsin	190.7	193.7	184.8	187.3	5.9	6.4
Other States ¹	763.8	765.3	686.4	688.9	77.4	76.4
United States	9,618.0	9,098.3	8,401.2	7,859.4	1,216.8	1,238.9

- Represents zero.

(D) Withheld to avoid disclosing data for individual operations.

¹ Not published separately to avoid disclosing individual operations.

Egg Production in Dozens by Type – States and United States: April 2019 and 2020

[Data by type of flock not shown for some States to avoid disclosing individual operations, data included in United States totals]

State	Total production		Table eggs		Hatching eggs	
	2019	2020	2019	2020	2019	2020
	(1,000 dozen eggs)	(1,000 dozen eggs)	(1,000 dozen eggs)	(1,000 dozen eggs)	(1,000 dozen eggs)	(1,000 dozen eggs)
Alabama	15,783.3	16,583.3	2,858.3	2,858.3	12,925.0	13,725.0
Arkansas	24,925.0	25,324.9	(D)	(D)	(D)	(D)
California	25,933.4	27,400.0	(D)	(D)	(D)	(D)
Colorado	10,233.4	11,283.3	(D)	(D)	(D)	(D)
Georgia	35,566.6	35,508.3	19,700.0	19,291.7	15,866.6	16,216.6
Illinois	12,450.0	11,950.0	12,250.0	11,616.7	200.0	333.3
Indiana	70,324.9	70,341.6	69,041.6	69,100.0	1,283.3	1,241.6
Iowa	116,925.0	102,391.7	115,133.4	100,325.0	1,791.6	2,066.7
Kentucky	10,150.0	10,950.1	(D)	(D)	(D)	(D)
Maryland	5,300.1	5,425.0	5,191.7	5,300.0	108.4	125.0
Michigan	32,016.7	29,458.3	(D)	(D)	(D)	(D)
Minnesota	22,850.0	17,891.7	22,175.0	17,258.3	675.0	633.4
Mississippi	9,725.0	9,866.7	(D)	(D)	(D)	(D)
Missouri	25,599.9	25,991.7	22,708.3	22,991.7	2,891.6	3,000.0
Nebraska	17,283.3	15,516.6	16,858.3	14,541.6	425.0	975.0
New York	11,100.0	11,625.0	(D)	(D)	(D)	(D)
North Carolina	25,650.0	27,433.3	12,866.7	14,558.3	12,783.3	12,875.0
Ohio	76,816.7	67,400.0	(D)	(D)	(D)	(D)
Oklahoma	4,883.3	4,608.3	(D)	(D)	(D)	(D)
Oregon	4,891.7	4,725.0	4,891.7	4,725.0	-	-
Pennsylvania	59,208.3	62,249.9	56,808.3	59,708.3	2,400.0	2,541.6
South Carolina	7,558.3	7,091.7	5,708.3	5,216.7	1,850.0	1,875.0
South Dakota	5,975.0	5,641.7	5,975.0	5,641.7	-	-
Texas	42,758.4	43,608.3	(D)	(D)	(D)	(D)
Utah	10,158.3	9,683.3	10,158.3	9,683.3	-	-
Virginia	5,125.0	4,583.3	2,666.6	2,066.7	2,458.4	2,516.6
Washington	14,166.6	14,425.0	(D)	(D)	(D)	(D)
Wisconsin	14,574.9	15,908.2	14,108.3	15,391.6	466.6	516.6
Other States ¹	63,583.2	62,241.6	57,358.3	55,958.1	6,224.9	6,283.5
United States	781,516.3	757,107.8	684,141.5	656,816.3	97,374.8	100,291.5

- Represents zero.

(D) Withheld to avoid disclosing data for individual operations.

¹ Not published separately to avoid disclosing individual operations.

Egg Production in Dozens by Type – States and United States: May 2019 and 2020

[Data by type of flock not shown for some States to avoid disclosing individual operations, data included in United States totals]

State	Total production		Table eggs		Hatching eggs	
	2019	2020	2019	2020	2019	2020
	(1,000 dozen eggs)	(1,000 dozen eggs)	(1,000 dozen eggs)	(1,000 dozen eggs)	(1,000 dozen eggs)	(1,000 dozen eggs)
Alabama	16,341.7	16,975.0	3,050.0	2,808.3	13,291.7	14,166.7
Arkansas	25,624.9	26,091.7	(D)	(D)	(D)	(D)
California	26,750.0	27,183.4	(D)	(D)	(D)	(D)
Colorado	10,608.3	12,033.3	(D)	(D)	(D)	(D)
Georgia	35,366.7	34,266.6	18,991.7	17,625.0	16,375.0	16,641.6
Illinois	13,783.3	11,875.0	13,566.6	11,575.0	216.7	300.0
Indiana	70,000.0	70,433.3	68,733.4	69,216.6	1,266.6	1,216.7
Iowa	122,558.3	98,966.7	120,675.0	96,816.7	1,883.3	2,150.0
Kentucky	10,266.6	11,216.6	(D)	(D)	(D)	(D)
Maryland	5,508.4	5,625.1	5,391.7	5,483.4	116.7	141.7
Michigan	32,733.3	29,949.9	(D)	(D)	(D)	(D)
Minnesota	23,866.7	17,308.4	23,200.0	16,683.4	666.7	625.0
Mississippi	10,041.7	9,850.0	(D)	(D)	(D)	(D)
Missouri	26,399.9	27,133.3	23,366.6	23,958.3	3,033.3	3,175.0
Nebraska	18,591.6	13,841.6	18,091.6	12,866.6	500.0	975.0
New York	11,550.0	12,225.1	(D)	(D)	(D)	(D)
North Carolina	26,983.3	28,233.3	13,725.0	14,875.0	13,258.3	13,358.3
Ohio	76,025.0	64,316.6	(D)	(D)	(D)	(D)
Oklahoma	5,066.7	4,541.6	(D)	(D)	(D)	(D)
Oregon	5,000.0	4,866.6	5,000.0	4,866.6	-	-
Pennsylvania	62,533.4	63,500.0	59,925.0	60,950.0	2,608.4	2,550.0
South Carolina	7,208.3	7,225.0	5,283.3	5,283.3	1,925.0	1,941.7
South Dakota	6,258.3	5,675.0	6,258.3	5,675.0	-	-
Texas	42,608.4	44,724.9	(D)	(D)	(D)	(D)
Utah	10,316.6	10,416.7	10,316.6	10,416.7	-	-
Virginia	5,400.0	5,091.6	2,808.3	2,433.3	2,591.7	2,658.3
Washington	14,566.7	14,708.3	(D)	(D)	(D)	(D)
Wisconsin	15,891.6	16,141.7	15,400.0	15,608.3	491.6	533.4
Other States ¹	63,650.1	63,775.0	57,200.1	57,408.4	6,450.0	6,366.6
United States	801,499.8	758,191.3	700,099.8	654,949.8	101,400.0	103,241.5

- Represents zero.

(D) Withheld to avoid disclosing data for individual operations.

¹ Not published separately to avoid disclosing individual operations.

Total Layers Molted by Month – United States: 2019-2020

[As of the first of the month. Blank data cells indicate estimation period has not yet begun]

Month	Being molted		Molt completed	
	2019	2020	2019	2020
	(percent)	(percent)	(percent)	(percent)
January	1.5	1.7	13.5	11.8
February	2.5	2.2	13.2	12.0
March	1.5	1.7	13.8	12.3
April	1.3	1.3	13.7	12.2
May	2.5	3.5	13.1	11.0
June	2.0	4.4	13.3	11.6
July	2.0		13.3	
August	2.0		13.3	
September	2.0		13.0	
October	1.9		13.0	
November	1.5		13.2	
December	0.9		12.9	

Total Layers Molted First Day of the Month – States and United States: May 1 and June 1, 2019-2020

State	Being molted				Molt completed			
	May 1		June 1		May 1		June 1	
	2019	2020	2019	2020	2019	2020	2019	2020
	(percent)	(percent)	(percent)	(percent)	(percent)	(percent)	(percent)	(percent)
Alabama	1.5	1.0	1.0	1.5	3.5	4.5	5.0	4.0
Arkansas	0.5	-	2.0	3.5	9.0	10.5	8.5	9.0
California	4.0	2.0	2.0	-	10.0	6.0	12.0	7.5
Colorado	1.5	1.0	0.5	1.0	6.0	5.5	6.0	4.5
Georgia	2.0	1.0	3.0	3.0	9.5	9.5	8.0	9.0
Illinois	-	-	-	-	13.5	-	13.0	-
Indiana	2.5	2.5	2.0	3.5	17.0	12.5	18.0	13.5
Iowa	3.5	5.5	1.5	5.0	17.0	8.5	18.0	12.5
Kentucky	1.5	-	5.5	5.0	-	2.5	1.5	2.5
Maryland	-	-	-	-	-	-	-	-
Michigan	1.5	1.0	1.0	1.0	4.5	1.0	5.5	1.5
Minnesota	1.0	11.5	-	0.5	5.5	5.5	5.0	11.5
Mississippi	2.0	-	3.0	4.5	17.5	25.0	17.5	23.5
Missouri	-	-	3.0	2.0	9.0	0.5	7.0	-
Nebraska	3.0	30.0	-	28.5	10.0	10.5	10.5	9.0
New York	5.0	-	-	-	1.5	6.0	6.0	5.5
North Carolina	0.5	0.5	1.0	2.0	5.5	4.0	5.0	3.5
Ohio	2.0	10.5	3.0	8.0	15.5	13.5	14.0	15.0
Oklahoma	0.5	3.5	0.5	3.5	22.0	-	22.0	3.5
Oregon	-	-	-	-	-	1.5	-	1.0
Pennsylvania	0.5	1.0	1.5	5.5	2.5	4.0	1.5	5.0
South Carolina	5.0	-	2.5	3.0	19.0	22.5	25.0	21.0
South Dakota	3.5	-	-	3.5	0.5	-	3.5	-
Texas	6.0	1.5	5.5	7.5	34.5	42.5	36.0	40.5
Utah	9.5	5.0	5.0	1.0	24.0	13.5	28.5	16.0
Virginia	-	-	-	-	-	-	-	-
Washington	4.5	-	1.0	3.0	14.0	16.0	15.0	13.0
Wisconsin	2.0	8.5	-	8.5	16.5	8.0	16.0	16.0
Other States ¹	3.6	1.0	2.9	3.1	19.9	18.8	19.5	16.7
United States	2.5	3.5	2.0	4.4	13.1	11.0	13.3	11.6

- Represents zero.

¹ Includes data for States not published in this table.

Hatchery Production – United States: 2019 and 2020

Item	2019	2020	2020 as percent of 2019
	(1,000)	(1,000)	(percent)
Egg-type			
Eggs in incubators on June 1	51,648	49,722	96
Chicks hatched during May	60,816	52,820	87
Chicks hatched January through May	285,174	270,810	95
Pullets hatched during May for intended placements:			
Hatchery supply flocks	215	233	108
Cumulative potential placements 7-18 months earlier ¹	2,468	2,882	117
Broiler-type			
Eggs in incubators on June 1	705,839	699,290	99
Chicks hatched during May	857,507	807,382	94
Chicks hatched January through May	4,093,741	4,108,413	100
Pullets hatched during May for intended placements:			
Hatchery supply flocks	8,767	8,188	93
Cumulative potential placements 7-15 months earlier ²	71,318	73,677	103

¹ 2020 includes pullet chicks hatched November 2018 through October 2019.

² 2020 includes pullet chicks hatched February 2019 through October 2019.

Egg-Type Eggs in Incubators on the First of the Month – United States: 2019 and 2020

[Blank data cells indicate estimation period has not yet begun]

Item	2019	2020	2020 as percent of 2019
	(1,000)	(1,000)	(percent)
January	51,443	47,756	93
February	55,001	50,243	91
March	53,586	49,225	92
April	58,422	57,631	99
May	55,489	49,575	89
June	51,648	49,722	96
July	47,615		
August	47,490		
September	47,878		
October	48,512		
November	48,069		
December	47,798		

Egg-Type Chicks Hatched by Month – United States: 2019-2020

[Blank data cells indicate estimation period has not yet begun]

Month	Monthly			Cumulative		
	2019	2020	2020 as percent of 2019	2019	2020	2020 as percent of 2019
	(1,000 chicks)	(1,000 chicks)	(percent)	(1,000 chicks)	(1,000 chicks)	(percent)
January	55,850	52,825	95	55,850	52,825	95
February	52,182	48,169	92	108,032	100,994	93
March	55,658	56,065	101	163,690	157,059	96
April	60,668	60,931	100	224,358	217,990	97
May	60,816	52,820	87	285,174	270,810	95
June	51,858			337,032		
July	50,919			387,951		
August	46,246			434,197		
September	50,386			484,583		
October	52,066			536,649		
November	48,113			584,762		
December	46,114			630,876		

Intended Placements of Egg-Type Pullet Chicks for Hatchery Supply Flocks by Month and Total – United States: 2019-2020

[Blank data cells indicate estimation period has not yet begun]

Month	Pullet chicks hatched		2020 as percent of 2019	Cumulative potential placements relative to current supply flocks 7-18 months earlier ¹	
	2019	2020		2019	2020
	(1,000 chicks)	(1,000 chicks)	(percent)	(1,000 chicks)	(1,000 chicks)
January	268	265	99	2,446	2,791
February	201	482	240	2,402	2,887
March	189	322	170	2,468	2,818
April	295	243	82	2,446	2,954
May	215	233	108	2,468	2,882
June	270			2,509	2,838
July	255			2,515	2,872
August	194			2,532	2,869
September	286			2,585	3,150
October	199			2,579	3,283
November	198			2,669	3,231
December	302			2,699	3,249
Annual total	2,872				

¹ For May 2020, includes breeder pullet chicks hatched November 2018 through October 2019. The 7-18 months represent the first laying cycle. Molting and additional laying cycles will increase the cumulative potential placements.

Broiler-Type Eggs in Incubators on the First of the Month – United States: 2019 and 2020

[Blank data cells indicate estimation period has not yet begun]

Item	2019	2020	2020 as percent of 2019
	(1,000)	(1,000)	(percent)
January	683,775	715,246	105
February	687,702	716,997	104
March	694,560	718,593	103
April	696,510	711,218	102
May	703,505	660,894	94
June	705,839	699,290	99
July	694,935		
August	700,675		
September	694,562		
October	674,657		
November	677,193		
December	711,590		

Broiler-Type Chicks Hatched – States and United States: May 2019 and 2020

State	During May			January-May		
	2019	2020	2020 as percent of 2019	2019	2020	2020 as percent of 2019
	(1,000 chicks)	(1,000 chicks)	(percent)	(1,000 chicks)	(1,000 chicks)	(percent)
Alabama	112,671	115,082	102	545,605	584,180	107
Arkansas	91,887	80,698	88	439,284	412,998	94
Delaware	19,629	14,118	72	93,235	85,052	91
Florida	4,342	4,258	98	21,280	21,154	99
Georgia	127,918	121,433	95	613,422	603,245	98
Kentucky	28,198	26,179	93	134,943	133,127	99
Louisiana	13,908	11,239	81	65,606	61,249	93
Maryland	30,089	27,186	90	144,247	141,924	98
Mississippi	71,916	61,453	85	337,101	319,597	95
Missouri	31,168	32,010	103	148,176	157,143	106
North Carolina	86,873	77,857	90	418,963	423,396	101
Oklahoma	28,104	24,809	88	134,830	128,914	96
Pennsylvania	20,646	21,910	106	95,373	108,865	114
South Carolina	20,806	19,541	94	100,619	96,278	96
Texas	64,844	63,224	98	303,045	305,897	101
Virginia	23,672	20,738	88	113,855	107,423	94
California, Tennessee, and West Virginia	45,046	44,226	98	212,665	220,727	104
Other States ¹	35,790	41,421	116	171,492	197,244	115
United States	857,507	807,382	94	4,093,741	4,108,413	100

¹ Not published separately to avoid disclosing data for individual operations.

Broiler-Type Chicks Hatched by Month – United States: 2019-2020

[Blank data cells indicate estimation period has not yet begun]

Month	Monthly			Cumulative		
	2019	2020	2020 as percent of 2019	2019	2020	2020 as percent of 2019
	(1,000 chicks)	(1,000 chicks)	(percent)	(1,000 chicks)	(1,000 chicks)	(percent)
January	828,918	861,200	104	828,918	861,200	104
February	750,551	806,862	108	1,579,469	1,668,062	106
March	837,361	859,346	103	2,416,830	2,527,408	105
April	819,404	773,623	94	3,236,234	3,301,031	102
May	857,507	807,382	94	4,093,741	4,108,413	100
June	833,708			4,927,449		
July	850,393			5,777,842		
August	855,076			6,632,918		
September	815,567			7,448,485		
October	816,263			8,264,748		
November	796,660			9,061,408		
December	857,789			9,919,197		

Intended Placements of Broiler-Type Pullet Chicks for Hatchery Supply Flocks by Month and Total: 2019-2020

[Blank data cells indicate estimation period has not yet begun]

Month	Pullet chicks hatched		2020 as percent of 2019	Cumulative potential placements relative to current supply flocks 7-15 months earlier ¹	
	2019 (1,000 chicks)	2020 (1,000 chicks)		2019 (1,000 chicks)	2020 (1,000 chicks)
United States placements					
January	7,478	7,482	100	70,216	72,170
February	7,882	8,135	103	70,100	73,411
March	8,222	8,547	104	70,500	73,604
April	7,339	8,161	111	71,182	73,624
May	8,767	8,188	93	71,318	73,677
June	8,717			71,640	73,936
July	8,510			72,147	74,341
August	8,094			71,937	74,484
September	8,615			71,537	73,852
October	7,531			71,440	73,682
November	8,141			71,306	73,333
December	8,627			71,730	73,427
Annual total	97,923				
Total placements ²					
January	8,957	9,022	101		
February	9,525	9,581	101		
March	10,161	10,183	100		
April	9,146	9,700	106		
May	10,797	9,860	91		
June	10,606				
July	10,444				
August	9,763				
September	10,468				
October	9,063				
November	9,653				
December	10,365				
Annual total	118,948				

¹ For May 2020, includes breeder pullet chicks hatched February 2019 through October 2019.

² United States production of intended placements worldwide.

Statistical Methodology

Survey Procedures: Primary data for the *Chickens and Eggs* report are from weekly and/or monthly questionnaires sent to producers. An attempt is made to collect information for layer and egg estimates from each known contractor and independent producer who has at least 30,000 table egg layers, flocks of hatchery supply layers, or pullet only operations with at least 500 pullets. Coverage for operations with less than 30,000 table egg layers are estimated each month based on data reported in December. Approximately 500 contractors, independent egg producers, and pullet only operations are contacted each month. Data for broiler hatchery estimates are collected weekly from all broiler-type hatcheries that hatch at least one million chicks a year. Data for egg-type hatchery estimates are collected monthly from all egg-type hatcheries that hatch at least 50,000 chicks a year.

Estimating Procedures: Sound statistical methodology is employed to derive estimates from the reported data. All data are analyzed for unusual values. Data from each operation are compared to their own past operating profile and to trends from similar operations. Data for missing operations are estimated based on similar operations or historical data. NASS regional field offices prepare these estimates by using a combination of survey indications and historic trends. Individual State estimates are reviewed by the Agricultural Statistics Board for reasonableness.

For chicken hatcheries, chicks hatched consist of all chicks of domesticated breeds including males and chicks destined for hatchery supply flocks and research purposes. Eggs set are eggs in incubators for the purpose of hatching. The relationship of egg-type chicks hatched to chicken inventory and poultry marketings are carefully monitored. The disposition of egg-type chicks hatched prior to placement into the laying flock can vary significantly, which can make comparisons to changes in layer inventory inconsistent over time. Broiler chicks placed are specifically for meat production. Intended placement data reported by leading breeders include pullet chicks expected from eggs sold the preceding month. The breeders in this report account for a large percentage of replacement pullets for hatchery supply flocks. Production of replacement pullets by these breeders indicates the number of pullets available to hatchery supply layer flocks several months before the pullets will actually move into the laying flocks. "Hatchery Supply Flocks" include all generations of layers which could lay eggs to supply a hatchery. This includes the generations of parents, grandparents, great-grandparents, pedigree, etc. Also included are research flocks, vaccine flocks, and specific pathogen-free flocks. The broiler cumulative potential placements are a moving total of the intended placements 7-15 months earlier. The egg-type cumulative potential placements of 7-18 months earlier represent the first laying cycle. Molting and additional laying cycles will increase the cumulative potential placements of egg-type hatching flocks.

Revision Policy: The previous month's estimates are subject to revision if late reports or corrected data indicates a different level. Additionally, revisions after the monthly report will be made at the end of the marketing year and published in the annual reports of *Chickens and Eggs Summary* and *Hatchery Production Summary*. Estimates will also be reviewed for chickens and eggs after data from the 5-year Census of Agriculture are available. No revisions will be made after that date.

Reliability: Estimates are based on a census of all known contractors and independent producers who have at least 30,000 table egg layers, flocks of hatchery supply layers, pullet only operations with at least 500 pullets, or operating hatcheries and therefore, have no sampling error. However, estimates are subject to errors such as omission, duplication, and mistakes in reporting, recording, and processing the data. While these errors cannot be measured directly, they are minimized through strict quality controls in the data collection process and a careful review of all reported data for consistency and reasonableness.

To assist in evaluating the reliability of the estimates in this report, the "Root Mean Square Error" is shown for selected items in the following table. The "Root Mean Square Error" is a statistical measure based on past performance and is computed using the differences between first and final estimates. The "Root Mean Square Error" for total layers over the past 24 months is 1.5 percent. This means that chances are 2 out of 3 that the final estimate will not be above or below the current estimate of 386 million layers by more than 1.5 percent. Chances are 9 out of 10 that the difference will not exceed 2.6 percent.

Reliability of Layer and Egg Estimates

[Based on data for the past 24 months]

Item	Root mean square error	90 percent confidence level	Difference between first and latest estimate				
			Average	Smallest	Largest	Months	
						Below latest	Above latest
Total layers	(percent) 1.5	(percent) 2.6	(1,000) 4,528	(1,000) 107	(1,000) 10,395	(number) 22	(number) 2
Eggs	1.6	2.7	(million) 110	(million) 1	(million) 257	22	2

Terms and Definitions of Chickens and Eggs Estimates

Total Layers includes both table egg and hatching egg flocks regardless of size.

Intended Placements are reported by leading breeders. Coverage may not be 100 percent. Includes expected pullet chicks from eggs sold during the preceding month at the rate of 125 pullet chicks per case of 30 dozen eggs.

Molted Layers is the same data series as the previously published Forced Molt Layers. Nomenclature changed as of January 2015.

Information Contacts

Listed below are the commodity specialists in the Livestock Branch of the National Agricultural Statistics Service to contact for additional information. E-mail inquiries may be sent to nass@usda.gov

Travis Averill, Chief, Livestock Branch	(202) 692-0069
Tony Dorn, Head, Poultry and Specialty Commodities Section	(202) 690-3223
Holly Brenize – Poultry Slaughter	(202) 720-0585
Alissa Cowell-Mytar – Cold Storage, Capacity of Refrigerated Warehouses	(202) 720-4751
Liana Cuffman – Catfish and Trout, Mink, Census of Aquaculture	(202) 720-8784
Fatema Haque – Turkey Hatchery, Turkeys Raised	(202) 690-3244
Vacant – Layers, Eggs, Egg Products	(202) 690-3676
Adam Peters – Honey, Honey Bee Colonies	(202) 690-4870
Takiyah Walker – Broiler Hatchery, Chicken Hatchery	(202) 720-6147

Access to NASS Reports

For your convenience, you may access NASS reports and products the following ways:

- All reports are available electronically, at no cost, on the NASS web site: www.nass.usda.gov
- Both national and state specific reports are available via a free e-mail subscription. To set-up this free subscription, visit www.nass.usda.gov and click on “National” or “State” in upper right corner above “search” box to create an account and select the reports you would like to receive.
- Cornell’s Mann Library has launched a new website housing NASS’s and other agency’s archived reports. The new website, <https://usda.library.cornell.edu>. All email subscriptions containing reports will be sent from the new website, <https://usda.library.cornell.edu>. To continue receiving the reports via e-mail, you will have to go to the new website, create a new account and re-subscribe to the reports. If you need instructions to set up an account or subscribe, they are located at: <https://usda.library.cornell.edu/help>. You should whitelist notifications@usda-esmis.library.cornell.edu in your email client to avoid the emails going into spam/junk folders.

For more information on NASS surveys and reports, call the NASS Agricultural Statistics Hotline at (800) 727-9540, 7:30 a.m. to 4:00 p.m. ET, or e-mail: nass@usda.gov.

The U.S. Department of Agriculture (USDA) prohibits discrimination against its customers, employees, and applicants for employment on the basis of race, color, national origin, age, disability, sex, gender identity, religion, reprisal, and where applicable, political beliefs, marital status, familial or parental status, sexual orientation, or all or part of an individual's income is derived from any public assistance program, or protected genetic information in employment or in any program or activity conducted or funded by the Department. (Not all prohibited bases will apply to all programs and/or employment activities.)

If you wish to file a Civil Rights program complaint of discrimination, complete the [USDA Program Discrimination Complaint Form](#) (PDF), found online at www.ascr.usda.gov/filing-program-discrimination-complaint-usda-customer, or at any USDA office, or call (866) 632-9992 to request the form. You may also write a letter containing all of the information requested in the form. Send your completed complaint form or letter to us by mail at U.S. Department of Agriculture, Director, Office of Adjudication, 1400 Independence Avenue, S.W., Washington, D.C. 20250-9410, by fax (202) 690-7442 or email at program.intake@usda.gov.