



# **ECHO - Enforcement and Compliance History Online**

<https://echo.epa.gov>



# AUDIO INSTRUCTIONS

*You are in listen-only mode (muted).*



Chat



Raise Hand



Q&A

Leave



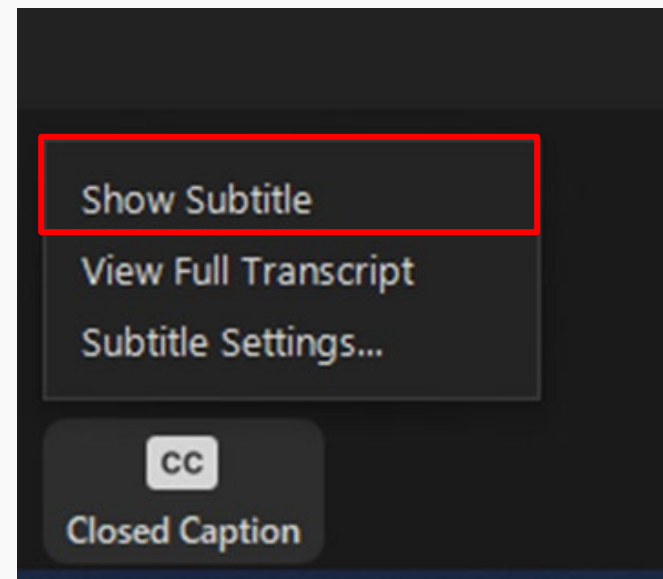
# Questions During the Webinar

- Please use the Questions box to type in your questions throughout the webinar.
- Please make the context of your question clear, as we will be answering questions covering a range of topics (feel free to reference live examples or slide numbers).
- In order to make this webinar useful for all attendees, we will not address site specific or individual problems during this session - please use ECHO's [Contact Us](#) page for help with those questions.



# Closed Captioning and Webinar Materials

- Closed Captioning for today's Webinar is available by clicking the "Closed Caption" button on your toolbar.
- A recording of the webinar, the presentation slides, and the transcript will be uploaded to the [ECHO Training Page](#) within the next week.





## Introduction

- The U.S. Environmental Protection Agency provides public access to its regulatory compliance and enforcement data via the Internet.
- The Enforcement and Compliance History Online (ECHO) website at <https://echo.epa.gov> integrates data from major EPA information systems for public use.



# What is ECHO?

- ECHO is EPA's public website that provides compliance information about regulated facilities.
  - How they are regulated
  - When they were inspected
  - Whether violations of environmental regulations were found
  - Whether an enforcement action was taken
- The website also provides dashboards with views of enforcement and compliance status trends and some bulk datasets for download.



# ECHO Content

## **Compliance history for more than 1,000,000 EPA-regulated facilities**

- Three-year compliance status and five-year inspection and enforcement history
- EPA and state, local, and tribal environmental agency data for:
  - Clean Air Act stationary sources
  - Clean Water Act permitted dischargers
  - Safe Drinking Water Act public water systems
  - Resource Conservation and Recovery Act hazardous waste handlers



## ECHO Content (continued)

- EPA data for other statutes like Emergency Planning and Community Right-to-Know Act (EPCRA), Federal Insecticide, Fungicide, and Rodenticide Act (FIFRA), and Toxic Substances Control Act (TSCA):
  - Inspections
  - Enforcement Action Details





## Sources of ECHO Data

ECHO extracts data from other EPA data systems, typically on a weekly basis:

- Integrated Compliance Information System (ICIS)
- Resource Conservation and Recovery Act Information System (RCRAInfo)
- Safe Drinking Water Information System (extracted quarterly)
- Facility Registry Service (links EPA-regulated facilities and permits under one ID number)
- Envirofacts: Toxics Release Inventory (TRI) and Greenhouse Gas (GHG) pollutant release data for context; EJSCREEN data
- Full list with refresh dates on “About the Data” page (<https://echo.epa.gov/resources/echo-data/about-the-data>)



# ECHO Features

- Facility Searches → *under home page “Search Options”*
  - All Media Programs (cross-program)
  - Air (stationary source)
  - Wastewater/Stormwater/Biosolids (dischargers)
  - Hazardous Waste (RCRA Subtitle C)
  - Drinking Water (public water systems)
  - Data downloads and web services
- Water Pollutant Loading Tool → *under home page “Search Options”*
- EPA Enforcement Case Search → *under home page “Find EPA Cases”*
- State Dashboards → *under home page “Analyze Trends”*



# EJSCREEN data and tools in ECHO

- How to use the ECHO facility searches to learn about environmental and demographic data from EPA's Environmental Justice Screening and Mapping Tool (EJSCREEN)
- For each location, EJSCREEN calculates values for:
  - Environmental Indicators
  - Demographic Indicators
  - EJ Indexes



# Environmental Justice Indicators

Environmental Indicators	Demographic Indicators
<ul style="list-style-type: none"><li>• National Scale Air Toxics Assessment (NATA) air toxics cancer risk</li><li>• NATA respiratory hazard index</li><li>• NATA diesel PM</li><li>• Particulate matter</li><li>• Ozone</li><li>• Traffic proximity and volume</li><li>• Lead paint indicator</li><li>• Proximity to Risk Management Plan sites</li><li>• Proximity to Hazardous Waste Facilities</li><li>• Proximity to National Priorities List sites</li><li>• Wastewater Discharge Indicator</li></ul>	<ul style="list-style-type: none"><li>• Percent Low-Income</li><li>• Percent People of Color</li><li>• Less than high school education</li><li>• Linguistic isolation</li><li>• Individuals under age 5</li><li>• Individuals over age 65</li></ul>



# Environmental Justice Indexes

**EJ Index =**

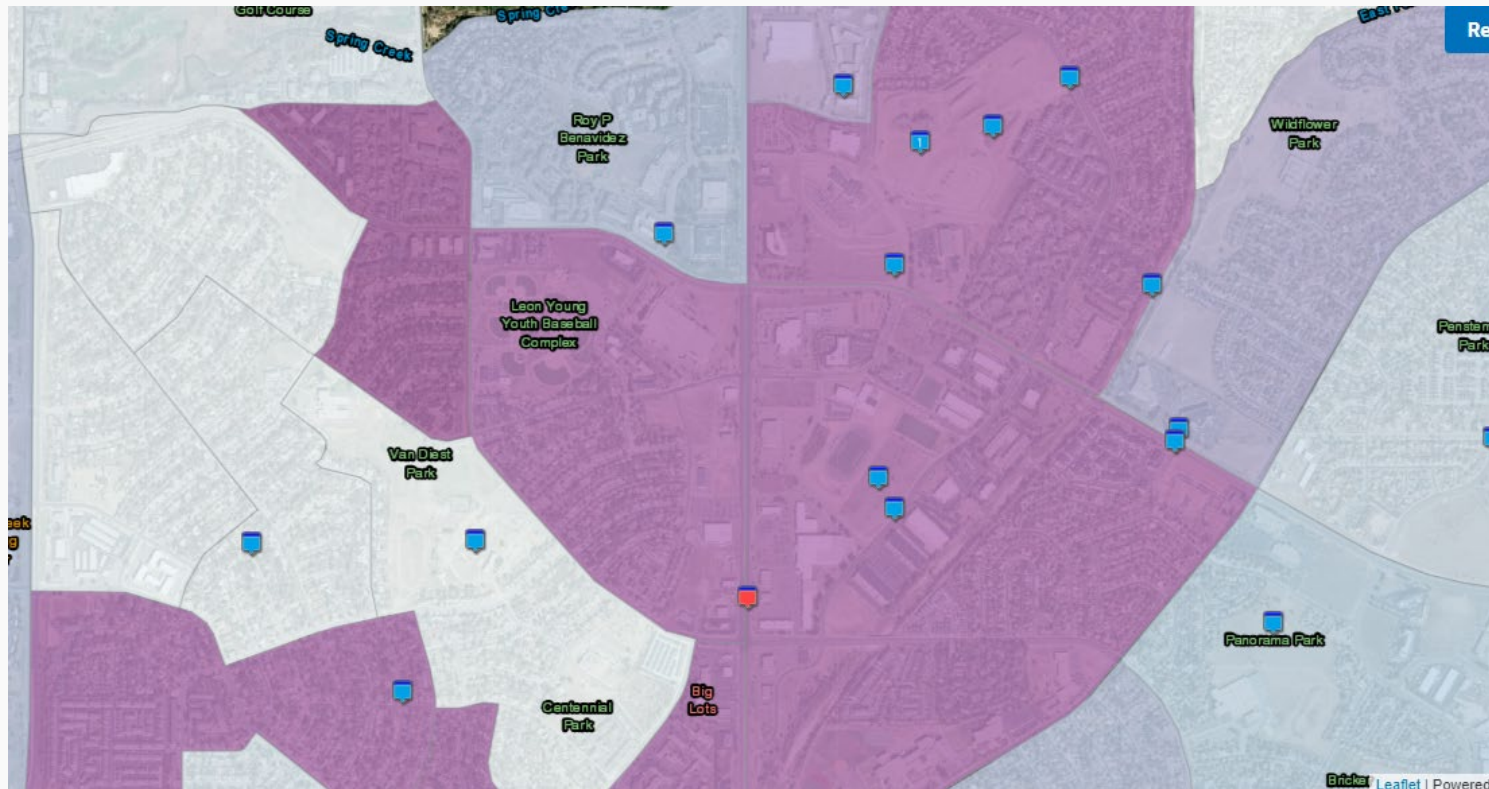
Environmental Index

$$\times (\text{Demographic Index}_{\text{Census Block Group}} - \text{Demographic Index}_{\text{US}})$$

x Population of Census Block Group

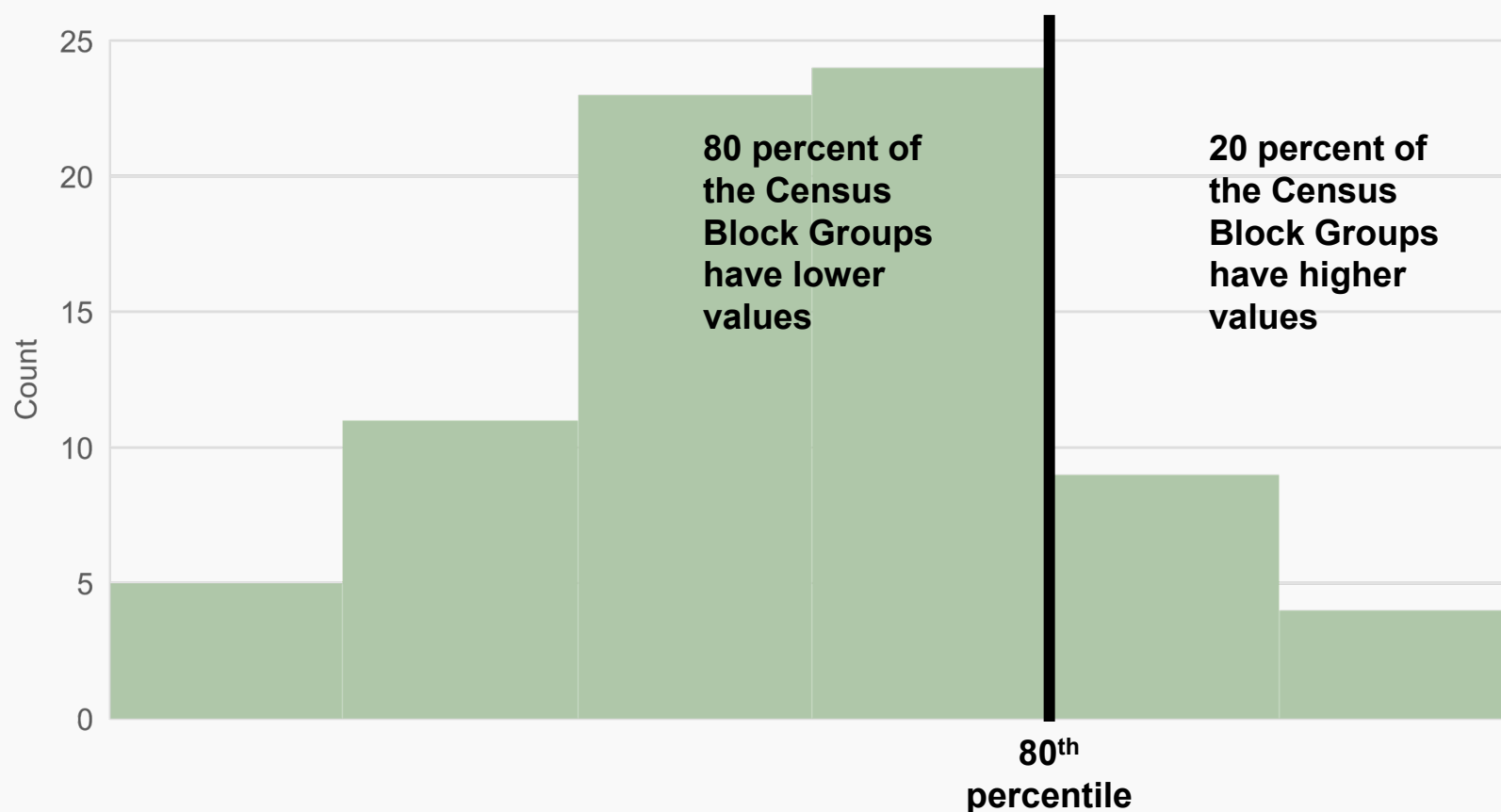
$$\text{Demographic Index} = \frac{\text{percent minority} + \text{percent low income}}{2}$$

# Census Block Groups





# EJSCREEN Percentiles



# Purposes and Uses of EJSCREEN

EJSCREEN allows users to access high-resolution environmental and demographic information for locations in the United States, and compare their selected locations to the rest of the state, EPA region, or the nation.

The tool may help users identify areas with:

- Minority and/or low-income populations
- Potential environmental quality issues
- A combination of environmental and demographic indicators that is greater than usual
- Other factors that may be of interest



Source: <https://www.epa.gov/ejscreen/purposes-and-uses-ejscreen>



# **THE IMPORTANCE OF EJ TODAY**

---

EJSCREEN in ECHO

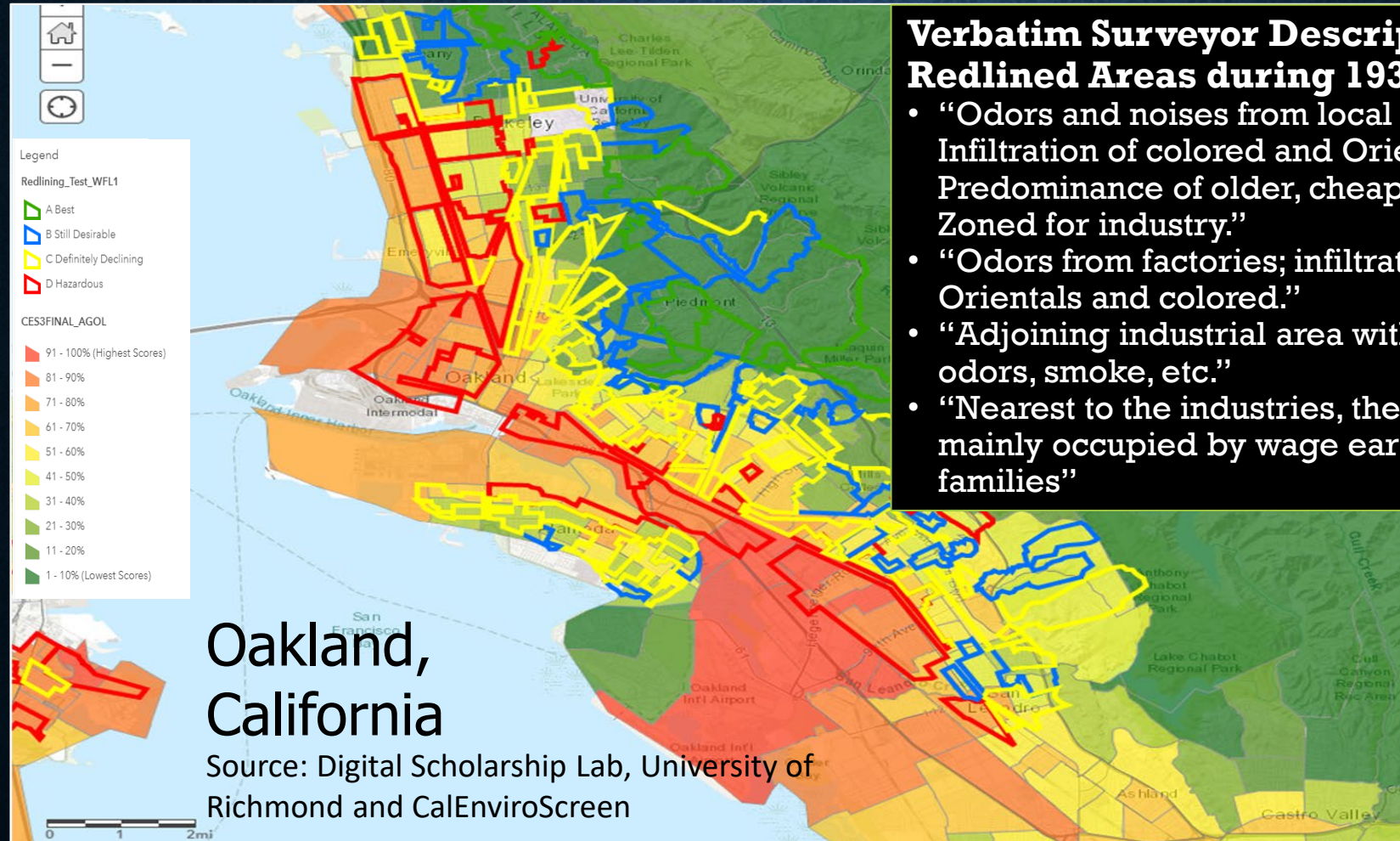
# HISTORICAL LEGACY OF EJ: REDLINING AND SYSTEMIC RACISM

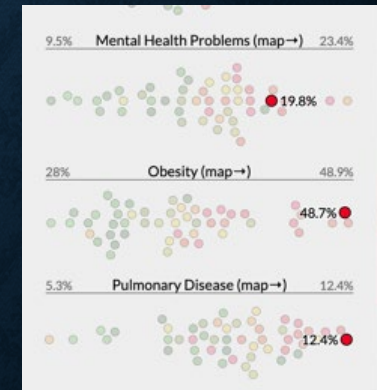
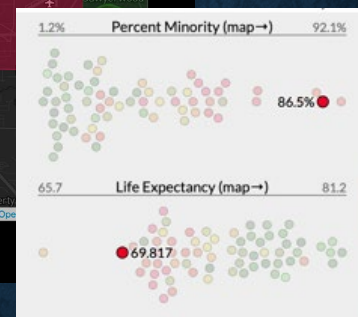
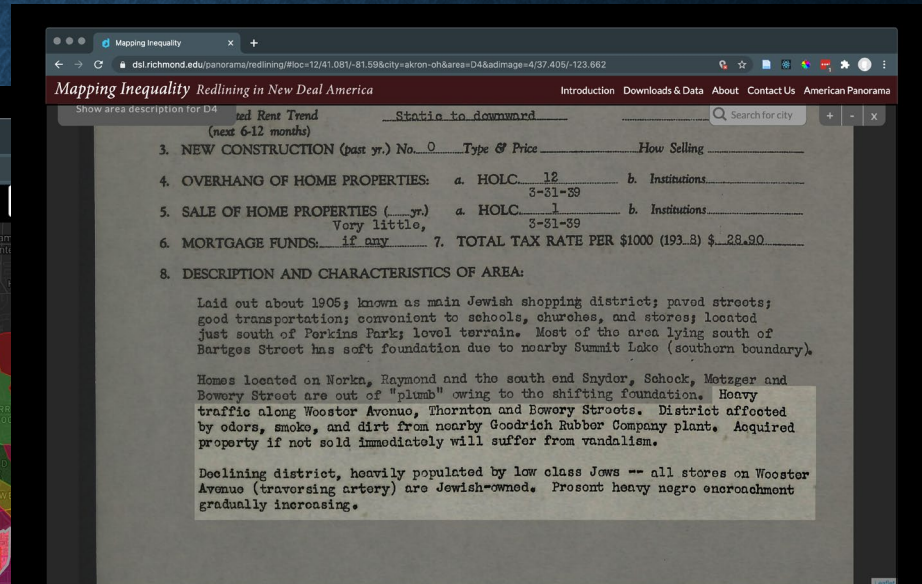
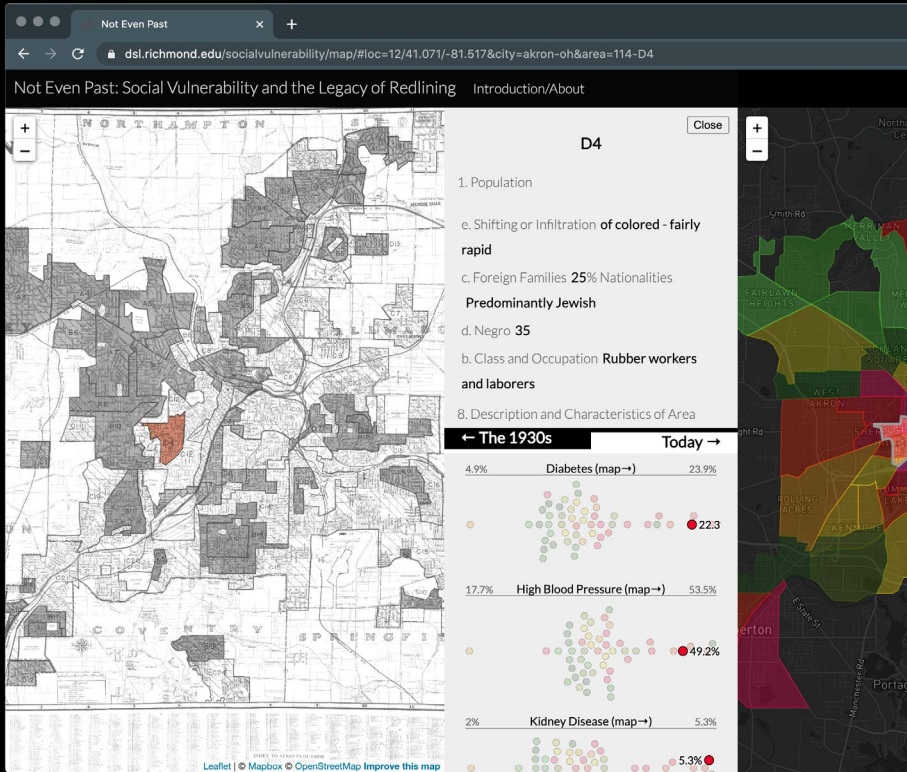
## Verbatim Surveyor Descriptions of Redlined Areas during 1930s:

- “Odors and noises from local industries. Infiltration of colored and Orientals. Predominance of older, cheap cottages. Zoned for industry.”
- “Odors from factories; infiltration of Orientals and colored.”
- “Adjoining industrial area with attendant odors, smoke, etc.”
- “Nearest to the industries, thereby being mainly occupied by wage earning families”

## Oakland, California

Source: Digital Scholarship Lab, University of Richmond and CalEnviroScreen







Please enter questions you have as the presentation goes on and we will answer them soon.



Example 1: What are the EJSCREEN index values for the location of a facility?



Example 2: How do the national and state EJSCREEN index values differ for a particular location?



Example 3: How can we look at hazardous waste facility proximity for an urban area?



## Example 4: How do I learn about EJ indexes related to one facility?





## Example 5: How do I search for EJSCREEN information about facilities in tribal country?

# Facility Search and EJSCREEN Resources



- EJSCREEN Environmental Justice Screening and Mapping Tool: <https://www.epa.gov/ejscreen>
- Technical Documentation for EJSCREEN: <https://www.epa.gov/ejscreen/technical-documentation-ejscreen>
- ECHO Facility Search Criteria Help: <https://echo.epa.gov/help/facility-search/search-criteria-help>
- ECHO Detailed Facility Report Data Dictionary: <https://echo.epa.gov/help/reports/dfr-data-dictionary>
- Short video tutorials: <https://echo.epa.gov/help/tutorials>

# General Resources



- ECHO Tool Guide: <https://echo.epa.gov/resources/general-info/tool-guide>
- Video tutorials: <https://echo.epa.gov/help/tutorials>
- Webinars: <https://echo.epa.gov/help/training>
- FAQ: <https://echo.epa.gov/resources/general-info/echo-faq>
- ECHO Mailing list: <https://echo.epa.gov/resources/general-info/listserv>
- How to Report an Error: <https://echo.epa.gov/help/how-to-report-error>
- State Agency Websites: <https://echo.epa.gov/resources/echo-data/state-websites>



# Question and Answer Session



# Thank you for attending today's training!

A short survey will appear on your screen momentarily,  
we would really appreciate your feedback.

**OMB Control Number: 2030-0051 Expiration Date: 5/31/24**

*(Pursuant to 5 CFR § 1320.12(b)(2); approval for the current collection is automatically extended on a monthly basis during OMB's review of its renewal.)*

**EPA Burden Statement:**

*"This collection of information is approved by OMB under the Paperwork Reduction Act, 44 U.S.C. 3501 et seq. (OMB Control No. 2010-0042). Responses to this collection of information are voluntary. An agency may not conduct or sponsor, and a person is not required to respond to, a collection of information unless it displays a currently valid OMB control number. The public reporting and recordkeeping burden for this collection of information is estimated to be 4 minutes per response. Send comments on the Agency's need for this information, the accuracy of the provided burden estimates and any suggested methods for minimizing respondent burden to the Regulatory Support Division Director, U.S. Environmental Protection Agency (2821T), 1200 Pennsylvania Ave., NW, Washington, D.C. 20460. Include the OMB control number in any correspondence. Do not send the completed form to this address."*