



STRATEGIC ENERGY MANAGEMENT PRODUCES BIG ENERGY SAVINGS

What is Strategic Energy Management (SEM)?

SEM is an offering from Energy Trust of Oregon which connects industrial facilities with a proven framework, tools, support, and cash incentives to build their own successful energy management program allowing them to evaluate their energy use and continually improve their energy performance over time.

SEM IS THE FIRST STEP TO LONG TERM, SUSTAINED OPERATIONAL SAVINGS

Energy Trust of Oregon can help your plant achieve energy savings of 3-5% from low and no-cost energy saving projects. To accomplish this, SEM coaches and technical experts develop and tap into the skills of your staff to evaluate and manage energy use for long-term savings.

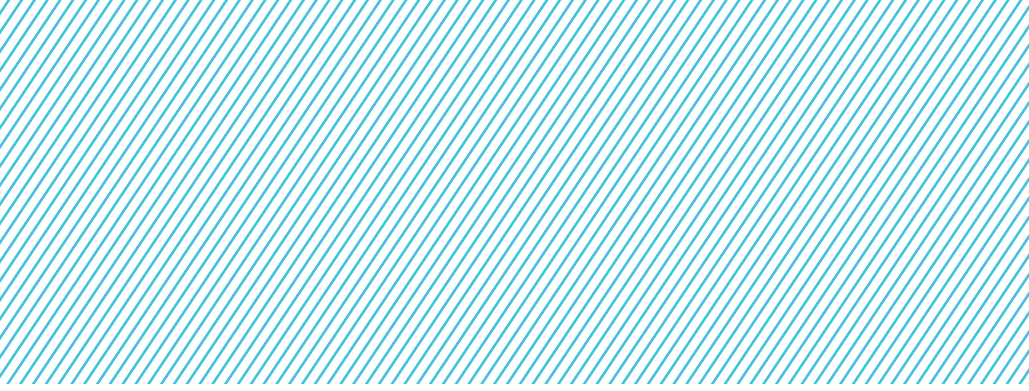
Our SEM team guide you and your staff to:

- Cultivate and train an energy champion and energy team.
- Engage and empower employees to reduce energy waste.
- Clarify organizational energy goals and priorities.
- Use diagnostic business tools and templates to identify waste in systems.
- Measure, track and report on energy intensity, savings and performance.

To date, more than 220 Oregon manufacturing sites, representing more than 180 companies, have reaped the benefits of SEM! You are not alone, you will be starting the program with a diverse group of industrial facilities in Oregon which provides a network of teams starting SEM at the same time in Oregon.

ENERGY TRUST IS RECRUITING ORGANIZATIONS TO JOIN THE NEXT COHORT OF SEM. TO QUALIFY YOU MUST BE:

- ✓ Served by Portland General Electric, Pacific Power, NW Natural, Cascade Natural Gas or Avista.
- ✓ Committed to saving energy through continuous improvement practices.
- ✓ Willing to implement no-and low-cost projects during the year-long engagement.



To gain optimal results and qualify for the full range of training, assistance and cash incentives available through SEM, your team must:

- Participate fully in the year-long program by attending workshops, completing activities, and implementing energy saving projects. Note: support is offered for additional years after year one.
- Obtain management support for an energy champion, data lead, and energy team to commit work time to SEM activities.
- Provide Energy Trust with energy and production data, or other data, to develop energy intensity models for your facility and to measure energy savings achieved on a energy in/unit of production basis.

What will this cost?

Energy Trust provides training, technical support and assessments at no cost to you. The only cost is the time commitment for staff to participate.

Upon completion of the year-long SEM program, Energy Trust will provide cash incentives for verified energy savings. Connect with Energy Trust to learn more about the available cash incentives.



For more information, contact us at production@energytrust.org or call **1.866.202.0576**.

