

How to use the Ontario Highways Program interactive map

The Ontario Highways Program interactive map consists of project filter options, legend, layer options, base map options and a search function. Most users use the project filter options, the zoom function and the search functions. The filter options panel is to the left of the map, the zoom function is in the bottom right corner and the balance of the tools are in the upper right corner of the map.

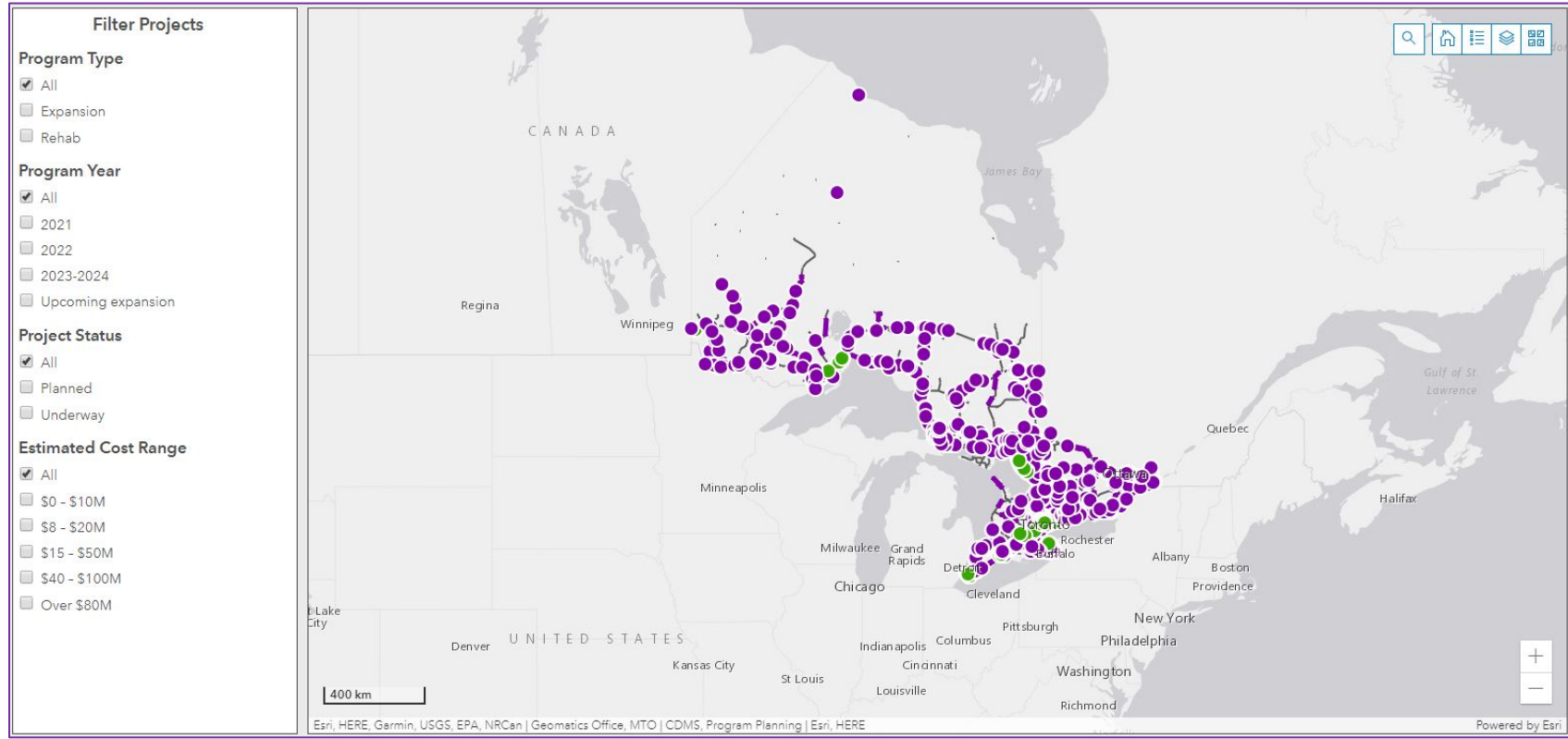
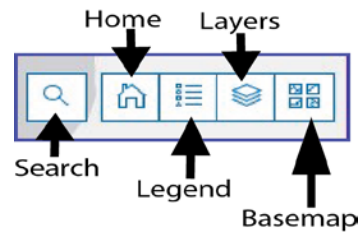


Figure 1- image of the Ontario's Highway Program map



Search:

The search tool helps to find an area or project of interest. Enter a project number or location, highway number, electoral district, or First Nations community.

Clicking on the search icon will expand the tool. The small arrow on the left will display a list of available search options.

Example: Select “Highway” as the search criteria, type the highway number ‘6’ hit enter. All projects plotted on highway 6 will be displayed.

Home:

Selecting this button returns the original default view of the map.

Legend:

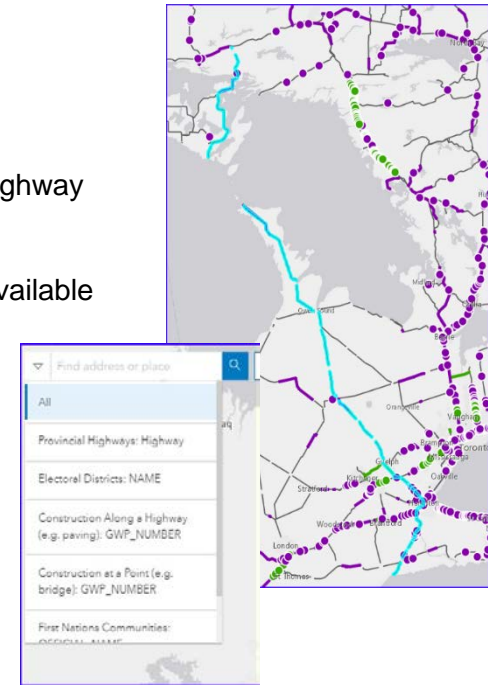
Selecting the legend button identifies what the points and lines represent on the map.

Layers:

Open the map layers panel to turn-on or off different reference layers. For example, turning on the Electoral Districts layer will add boundary lines to the map for each Electoral District.

Basemap:

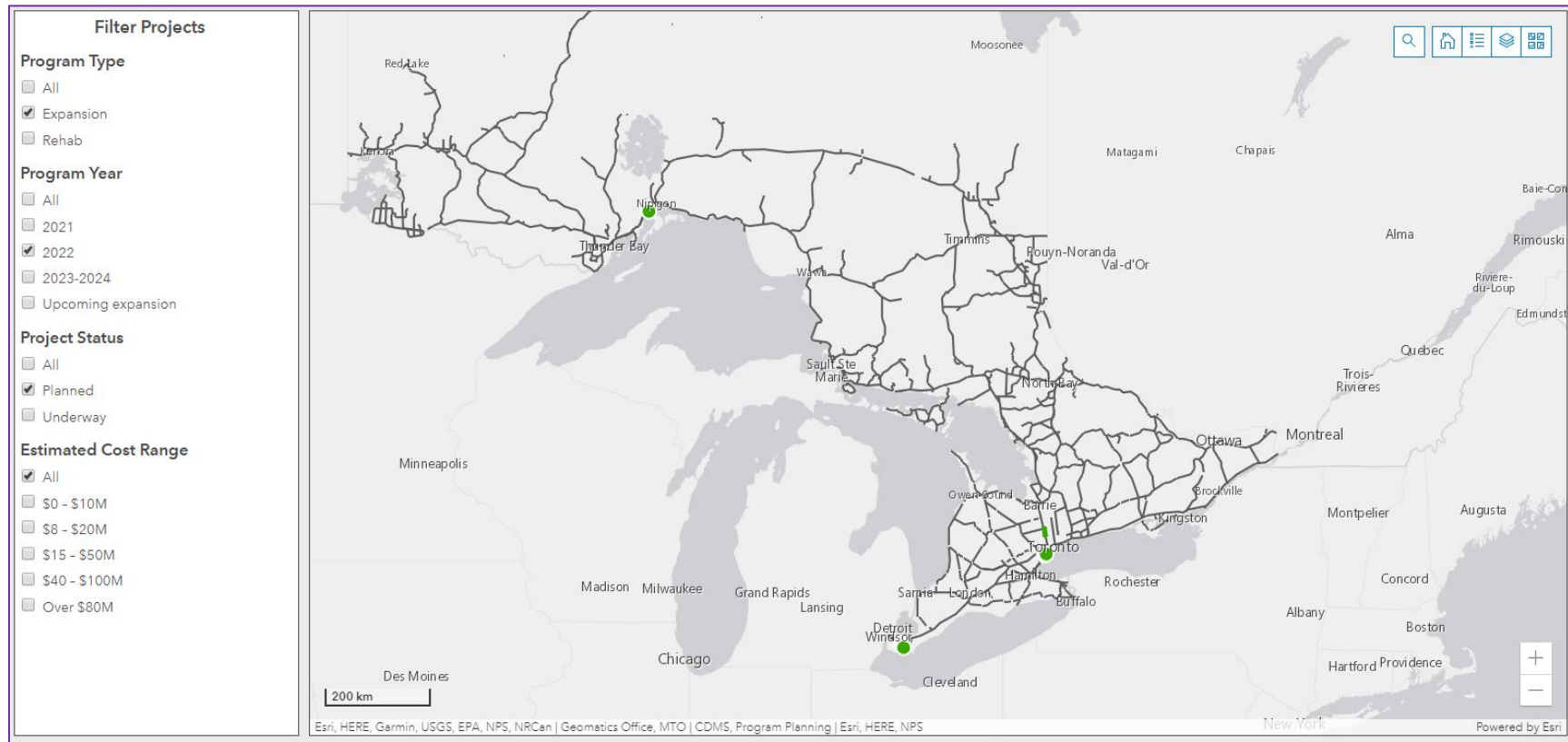
Opens the options to change the view such as, Topical or Street View.



Filtering Projects:

Use the **Filter Projects** panel to specify the program type, program year, project status and estimated cost range by clicking on the box to the left of the filter options. For example, selecting the “Expansion” box will only display expansion projects on the map.

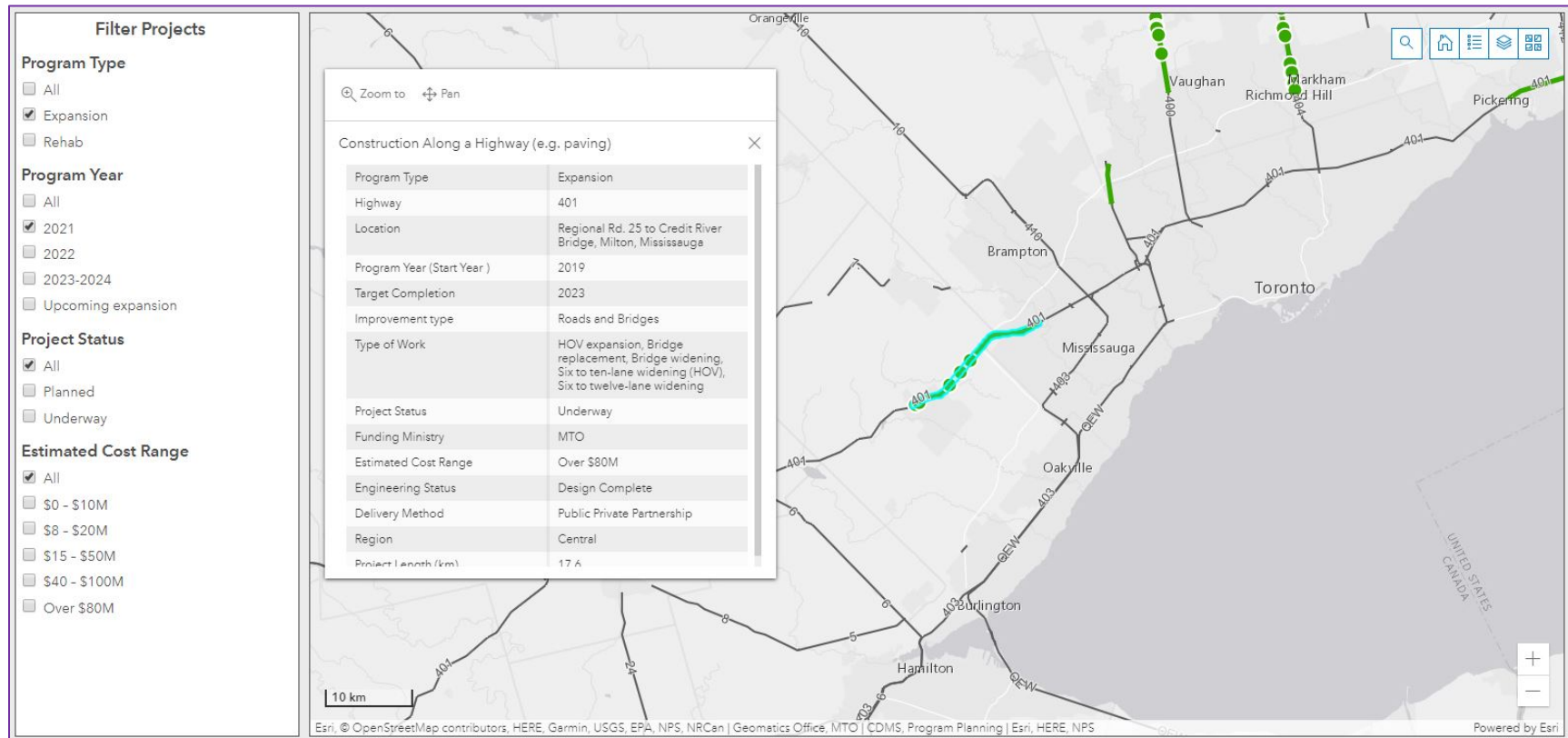
Figure 2 - the image below shows the map result when using some of the filters options in the Filter Projects panel



Accessing project information:

To access the project information, zoom into the area of interest. Clicking on the line or point on the map will return project information in a pop-up window. The scroll bar on the right-hand side of the pop-up window can be used to see additional information. To close the pop-up, select the X in the upper right corner of the pop-up.

Figure 3 - Select feature to view project information



Accessing multiple project information:

Sometimes, there are multiple projects in the same location. The pop-up will identify additional information by showing 1 of 2 in the upper right corner. In most cases, the features are part of the same project, but one may be a linear feature (such as the paving portion of the project) and others are point features (such as bridge or culvert portion of the project). To see the other project record, click the arrows on either side.

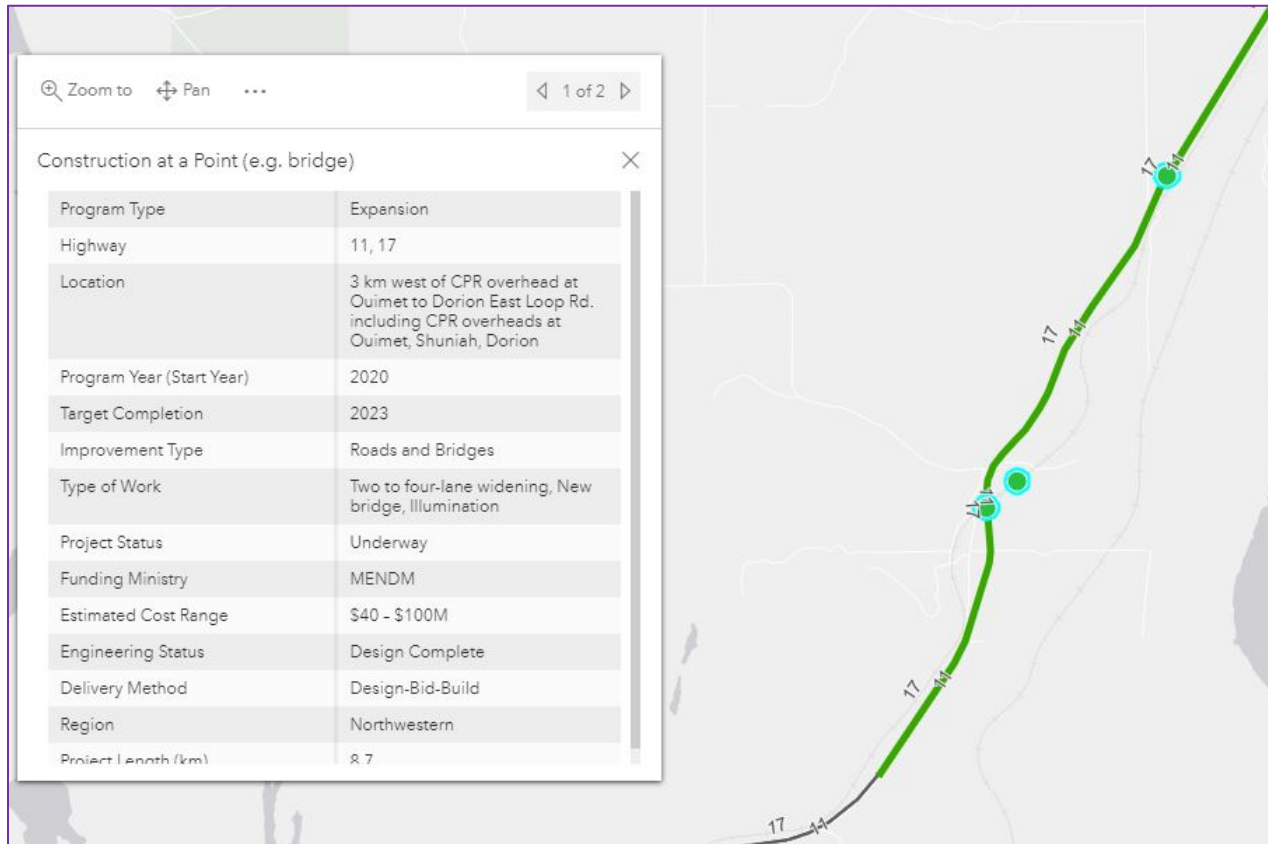


Figure 4 - Image shows example of multiple features selected.