

Schlumberger

Company: **Battelle Pacific Northwest Lab**

Well: **Wallula Basalt Pilot #1**

Field: **Wildcat**

County: **Walla Walla**

State: **Washington**

RESERVOIR SATURATION TOOL SIGMA PASS

County: Walla Walla
 Field: Wildcat
 Location: SOUTHWEST 1/4 OF SECTION
 Well: Wallula Basalt Pilot #1
 Company: Battelle Pacific Northwest Lab

LOCATION		SOUTHWEST 1/4 OF SECTION 10		Elev.: K.B. 5.50 ft G.L. D.F.	
Permanent Datum:	GROUND LEVEL	Elev.:	above Perm. Datum		
Log Measured From:	FLANGE TOP				
Drilling Measured From:	KELLY BUSHING				
API Serial No.	Section 10	Township 7	Range 31E		

Logging Date	Run 1	Run 2	Run
Run Number			
Depth Driller			
Schlumberger Depth			
Bottom Log Interval			
Top Log Interval			
Casing Driller Size @ Depth			
Casing Schlumberger			
Bit Size			
Type Fluid In Hole			
Density			
Fluid Loss			
Source Of Sample			
RM @ Measured Temperature	@		
RMF @ Measured Temperature	@		
RMC @ Measured Temperature	@		
Source RMF	RMC		
RM @ MRT	RMF @ MRT	@	@
Maximum Recorded Temperatures			
Circulation Stopped	Time		
Logger On Bottom	Time		
Unit Number	Location		
Recorded By			
Witnessed By			

Logging Date	19-Apr-2009		
Run Number	TWO		
Depth Driller	4105 ft		
Schlumberger Depth	4105 ft		
Bottom Log Interval	4103 ft		
Top Log Interval	1108 ft		
Casing Driller Size @ Depth	14,000 in @ 1108 ft		
Casing Schlumberger	1108 ft		
Bit Size	12.250 in		
Type Fluid In Hole	FRESH WATER		
Density	8.4 lbm/gal		
Fluid Loss	PH		
Source Of Sample	MUD TANK		
RM @ Measured Temperature	23,100 ohm.m @ 64 degF		
RMF @ Measured Temperature	@ @		
RMC @ Measured Temperature	@ @		
Source RMF	RMC		
RM @ MRT	RMF @ MRT	@ @	@ @
Maximum Recorded Temperatures			
Circulation Stopped	Time		
Logger On Bottom	Time		
Unit Number	3152	SACRAMENTO	4:51
Recorded By	BEN GRAU		
Witnessed By	CHARLOTTE SULLIVAN		

DEPTH SUMMARY LISTING

Date Created: 19-APR-2009 2:22:51

Depth System Equipment

Depth Measuring Device	Tension Device	Logging Cable
Type: IDW-B Serial Number: 6347 Calibration Date: Calibrator Serial Number: 1 Calibration Cable Type: 7-39Z LXS Wheel Correction 1: -4 Wheel Correction 2: -3	Type: CMTD-B/A Serial Number: 2205 Calibration Date: Calibrator Serial Number: 185 Number of Calibration Points: 0	Type: 7-39Z LXS Serial Number: 3152 Length: 17700 FT <hr/> Conveyance Method: Wireline Rig Type: LAND

Depth Control Parameters

Log Sequence:	Subsequent Log In the Well
Reference Log Name:	
Reference Log Run Number:	
Reference Log Date:	

Depth Control Remarks

1.	ALL SCHLUMBERGER DEPTH CONTROL PROCEDURES FOLLOWED
2.	
3.	
4.	
5.	
6.	

DISCLAIMER

THE USE OF AND RELIANCE UPON THIS RECORDED-DATA BY THE HEREIN NAMED COMPANY (AND ANY OF ITS AFFILIATES, PARTNERS, REPRESENTATIVES, AGENTS, CONSULTANTS AND EMPLOYEES) IS SUBJECT TO THE TERMS AND CONDITIONS AGREED UPON BETWEEN SCHLUMBERGER AND THE COMPANY, INCLUDING: (a) RESTRICTIONS ON USE OF THE RECORDED-DATA; (b) DISCLAIMERS AND WAIVERS OF WARRANTIES AND REPRESENTATIONS REGARDING COMPANY'S USE OF AND RELIANCE UPON THE RECORDED-DATA; AND (c) CUSTOMER'S FULL AND SOLE RESPONSIBILITY FOR ANY INFERENCE DRAWN OR DECISION MADE IN CONNECTION WITH THE USE OF THIS RECORDED-DATA.

OTHER SERVICES1	OTHER SERVICES2
OS1:	OS1:
OS2:	OS2:
OS3:	OS3:
OS4:	OS4:
OS5:	OS5:
REMARKS: RUN NUMBER 1	REMARKS: RUN NUMBER 2
TOOL STRING RAN AS PER TOOL SKETCH	
MATRIX: LIMESTONE	
DENSITY: 2.71 G/CC	
SIGMA PASS RUN AT 3600 FT/HR	

THANK YOU FOR USING SCHLUMBERGER!!

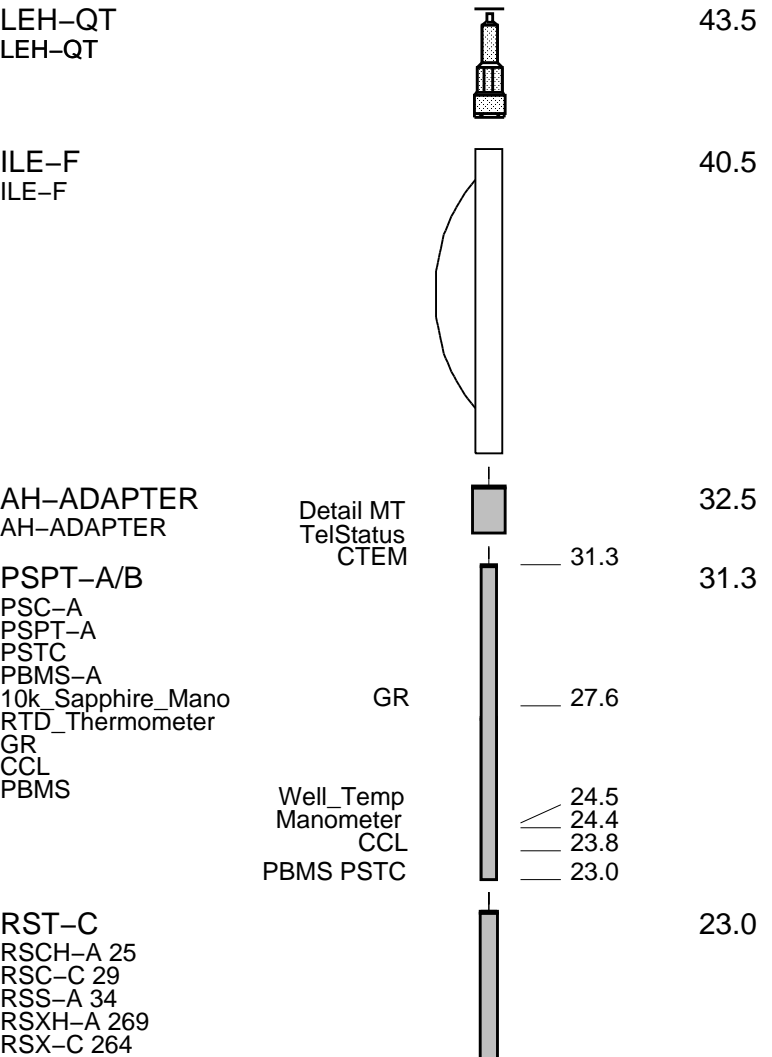
RUN 1			RUN 2		
SERVICE ORDER #:		AZJT00051	SERVICE ORDER #:		
PROGRAM VERSION:		17C0-154	PROGRAM VERSION:		
FLUID LEVEL:			FLUID LEVEL:		
LOGGED INTERVAL	START	STOP	LOGGED INTERVAL	START	STOP

EQUIPMENT DESCRIPTION

RUN 1 RUN 2

SURFACE EQUIPMENT
 WITM-A
 PSC_16MHZ

DOWNHOLE EQUIPMENT



EQUIPMENT DESCRIPTION

RUN 2

RSC-A Far
 RSC-A PNG
 RSC-A Nea
 RSX-A PNG

13.9

13.4

Tension HV 0.0
 TOOL ZERO

MAXIMUM STRING DIAMETER 3.63 IN
 MEASUREMENTS RELATIVE TO TOOL ZERO
 ALL LENGTHS IN FEET

Production String

(in) (ft)
 OD ID MD

Well Schematic

(ft) (in)
 MD OD ID

Casing String

0.0 13.325

Casing String

1108.0 13.325
 1108.0 12.250

Casing Shoe
 Borehole Segment

4110.0 12.250

Borehole Segment Bottom

ALL DEPTHS ARE DRILLERS DEPTHS

Company: Battelle Pacific Northwest Lab

Well: Wallula Basalt Pilot #1

Input DLIS Files

DEFAULT	RST_PSP_064PUP	FN:82	PRODUCER	19-Apr-2009 12:52	4104.0 FT	5.0 FT
---------	----------------	-------	----------	-------------------	-----------	--------

Output DLIS Files

DEFAULT	RST_PSP_087PUP	FN:105	PRODUCER	19-Apr-2009 14:01	4104.0 FT	5.0 FT
---------	----------------	--------	----------	-------------------	-----------	--------

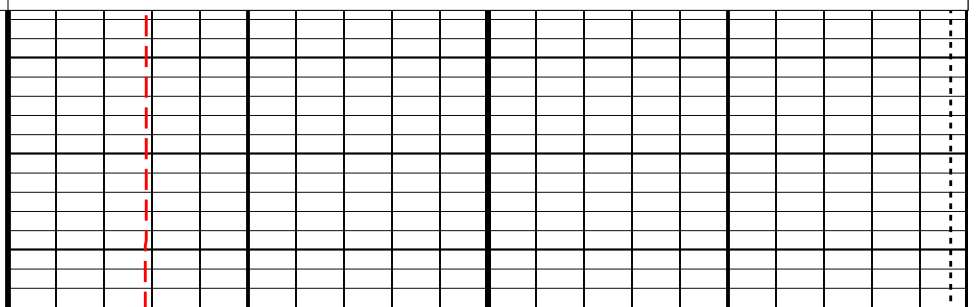
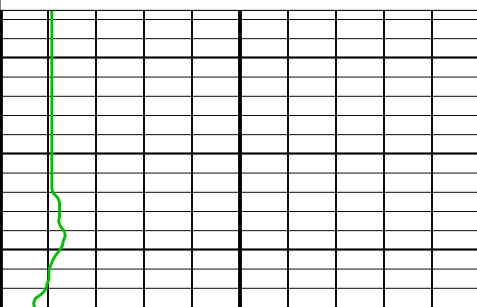
OP System Version: 17C0-154

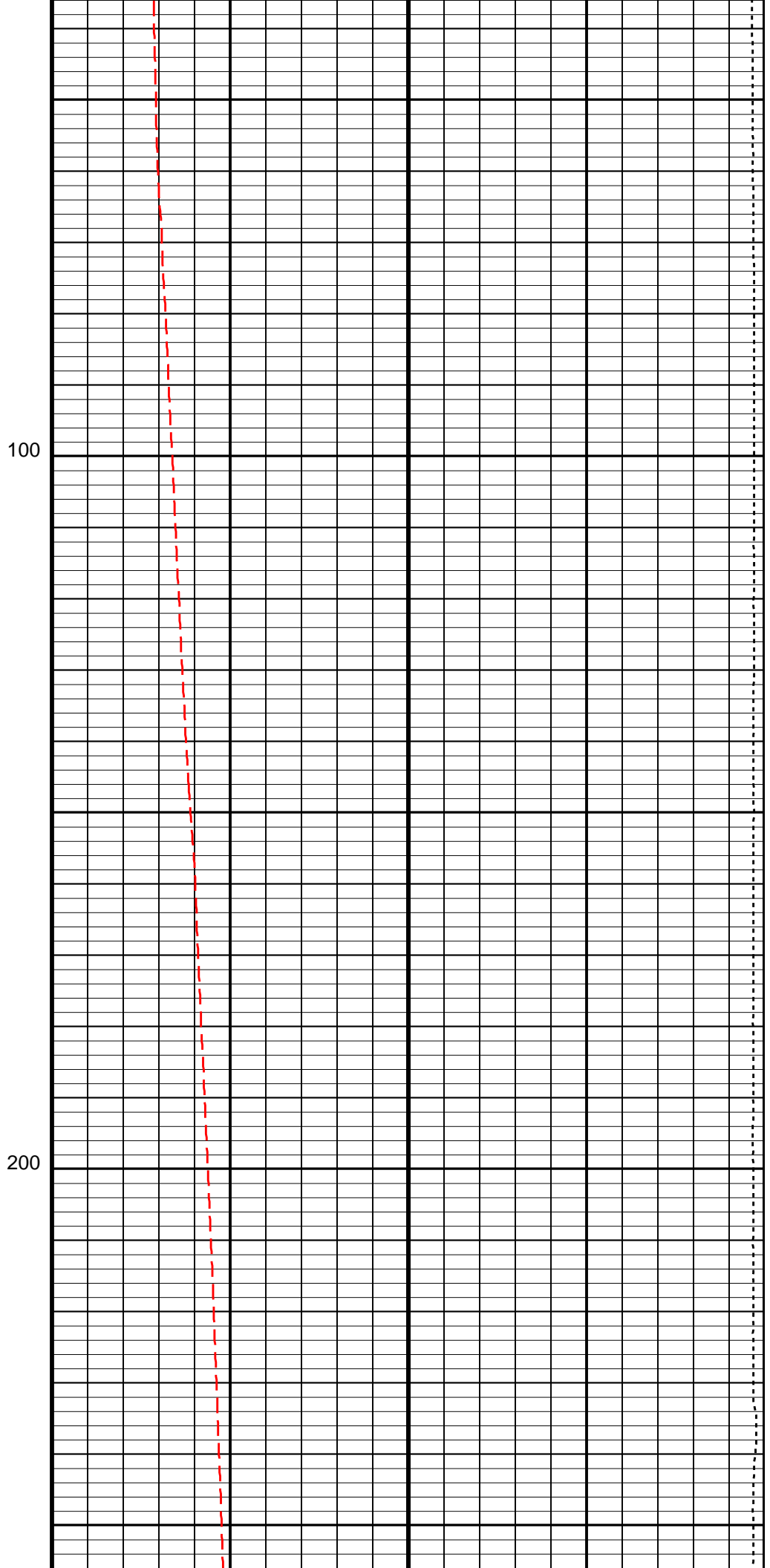
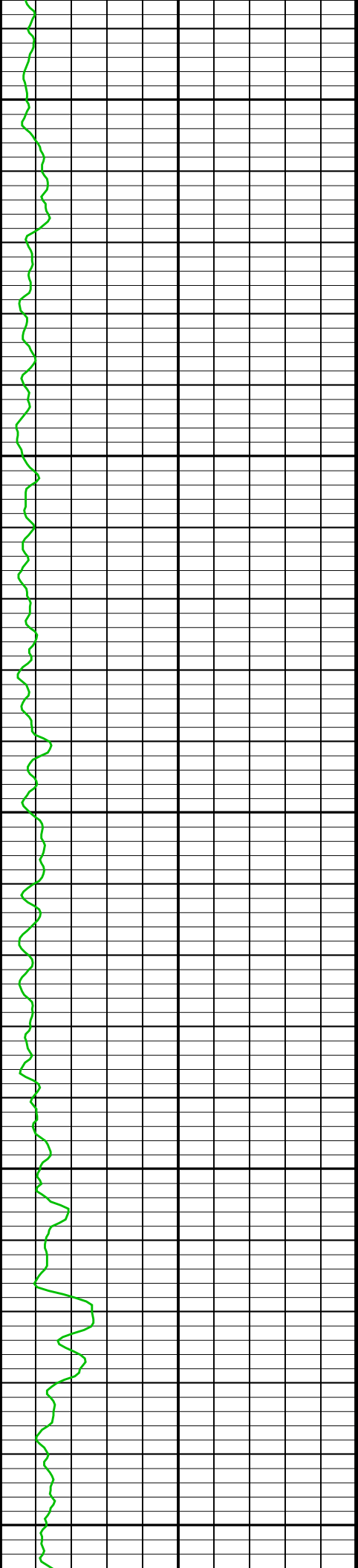
RST-C	17C0-154	PSPT-A/B	17C0-154
-------	----------	----------	----------

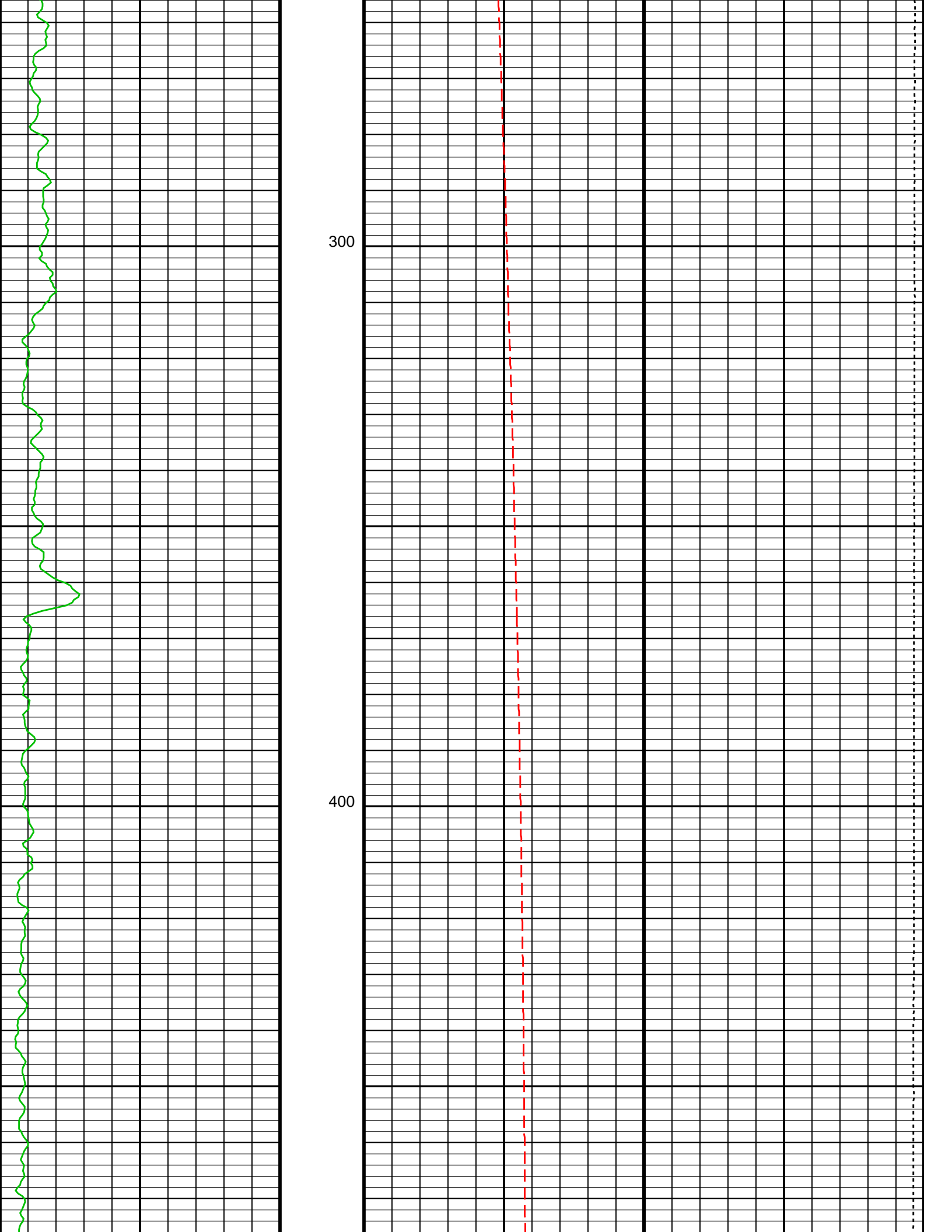
Tension (TENS)	
10000	0
(LBF)	

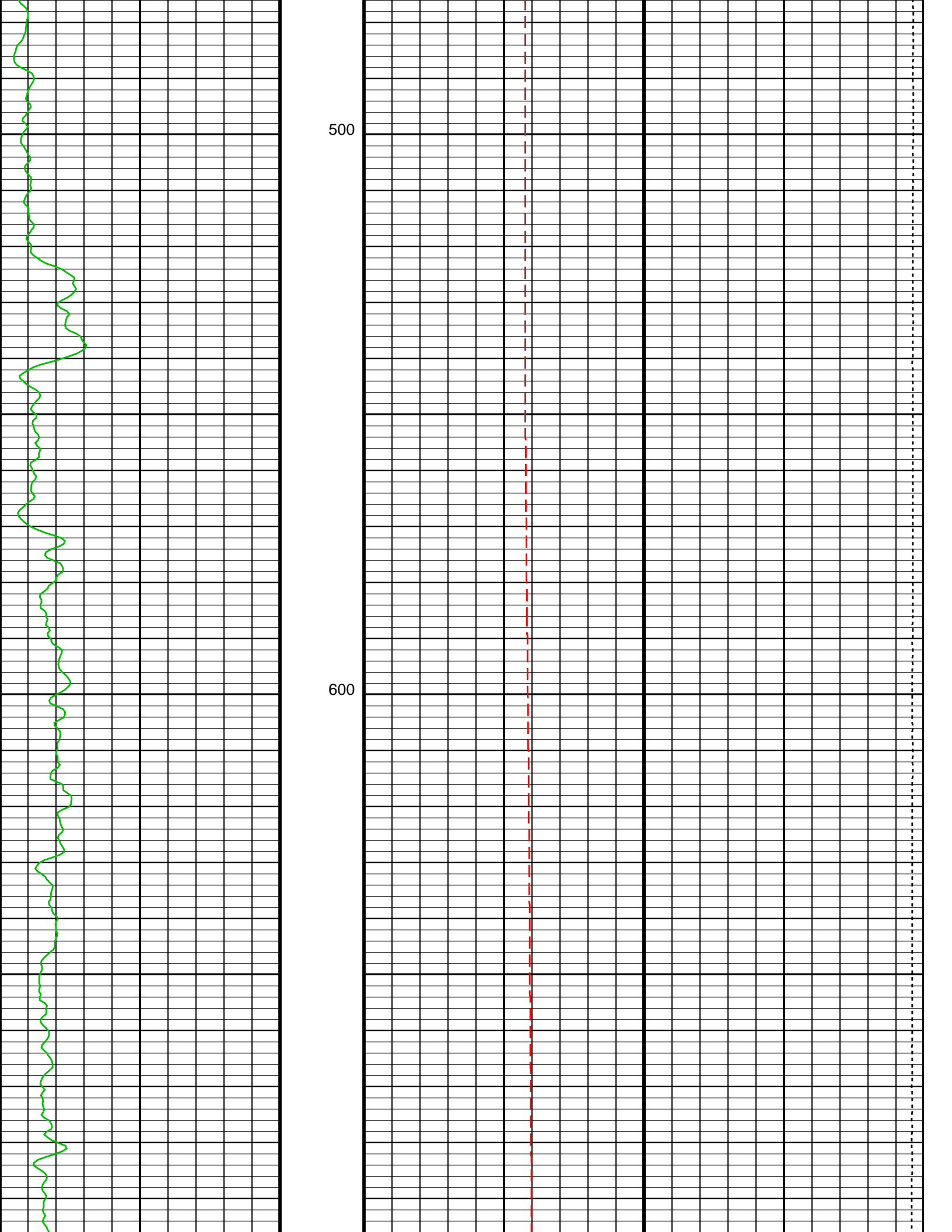
Gamma Ray (GR)	
0	150
(GAPI)	

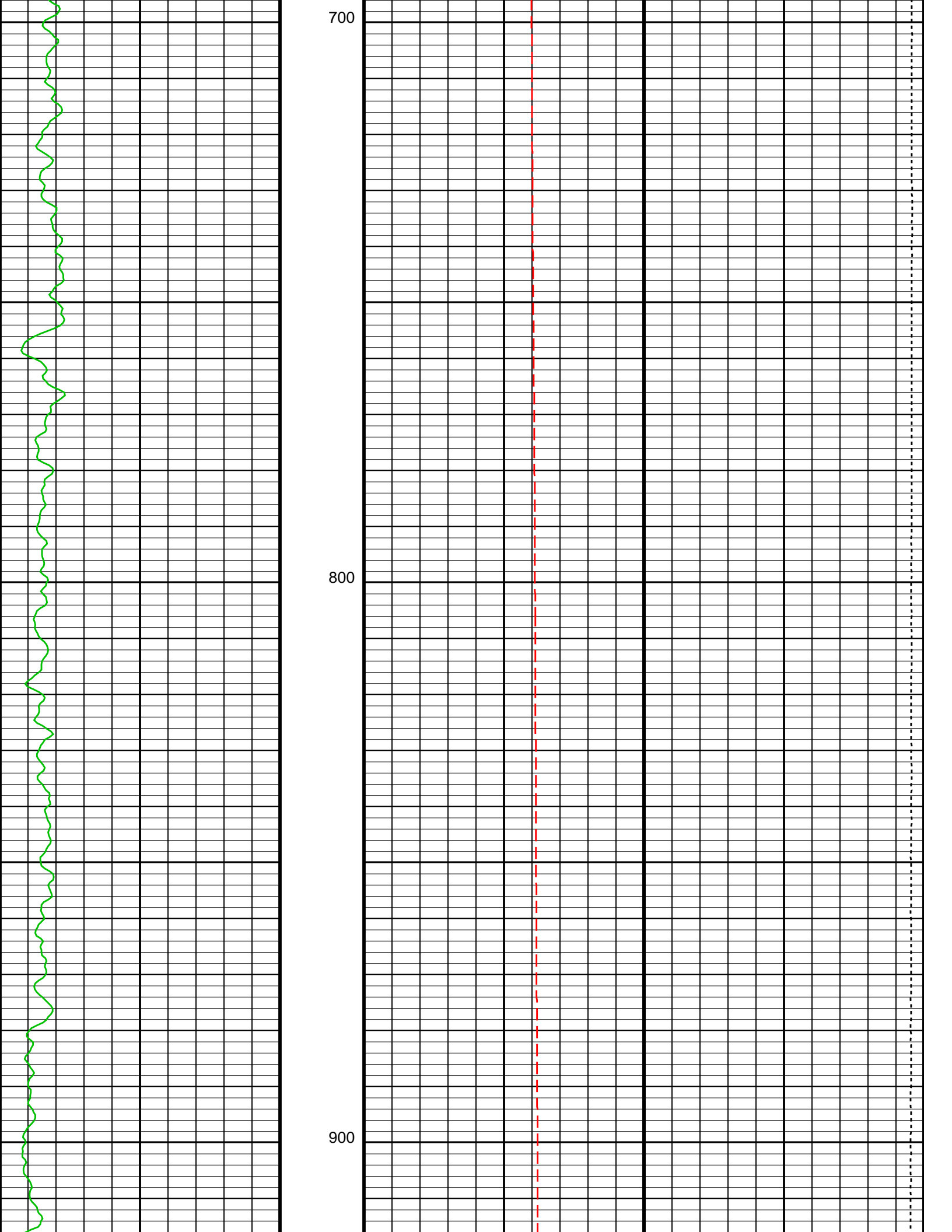
Well Temperature (WTEP)	
50	150
(DEGF)	

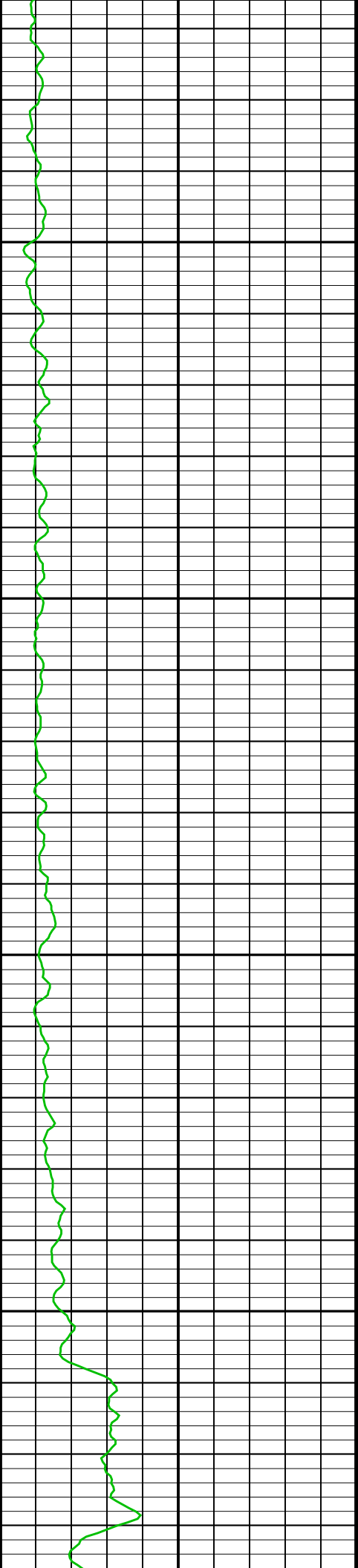






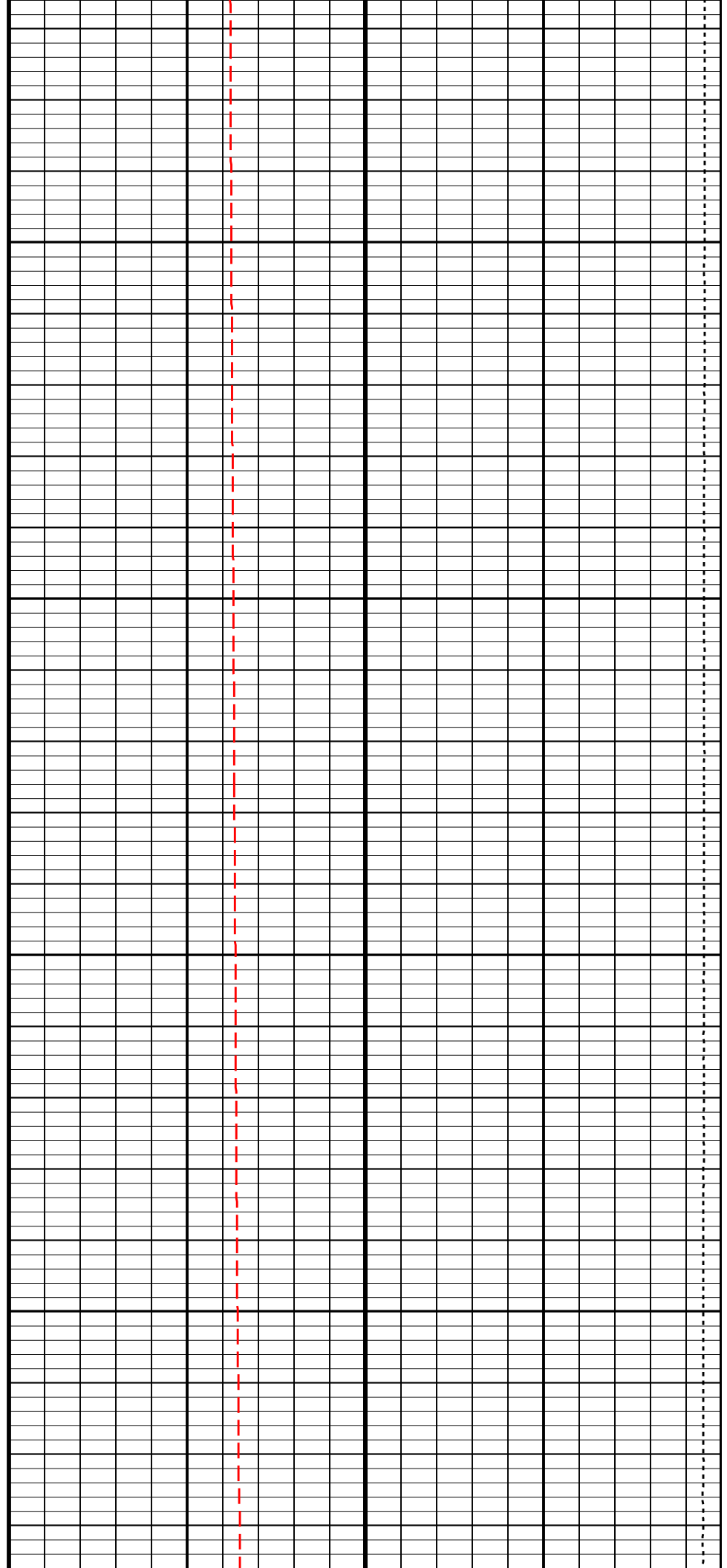


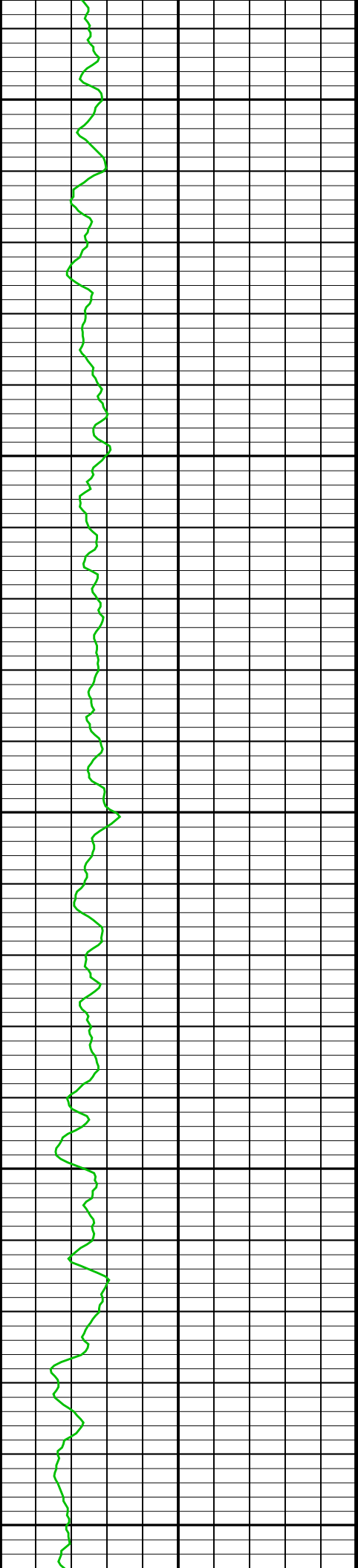




1000

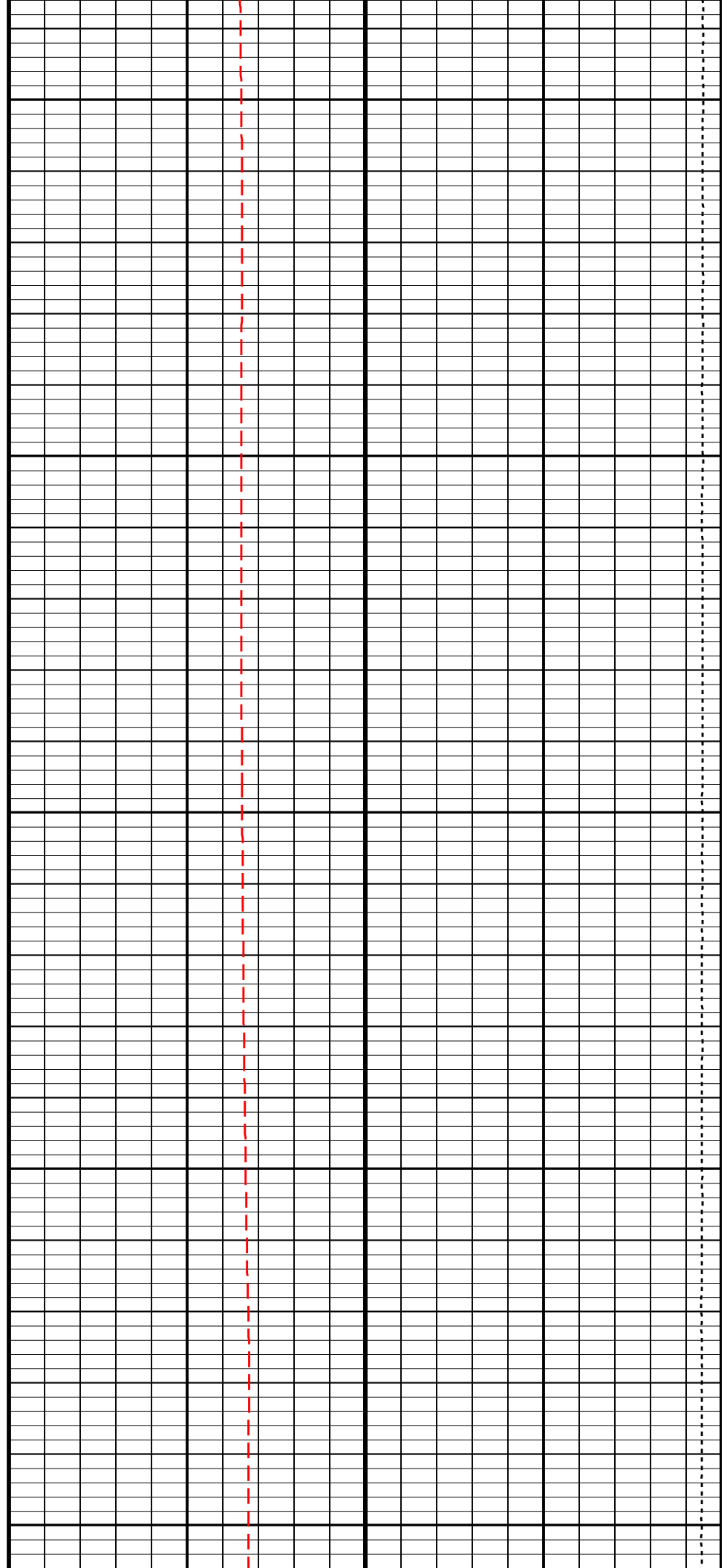
1100

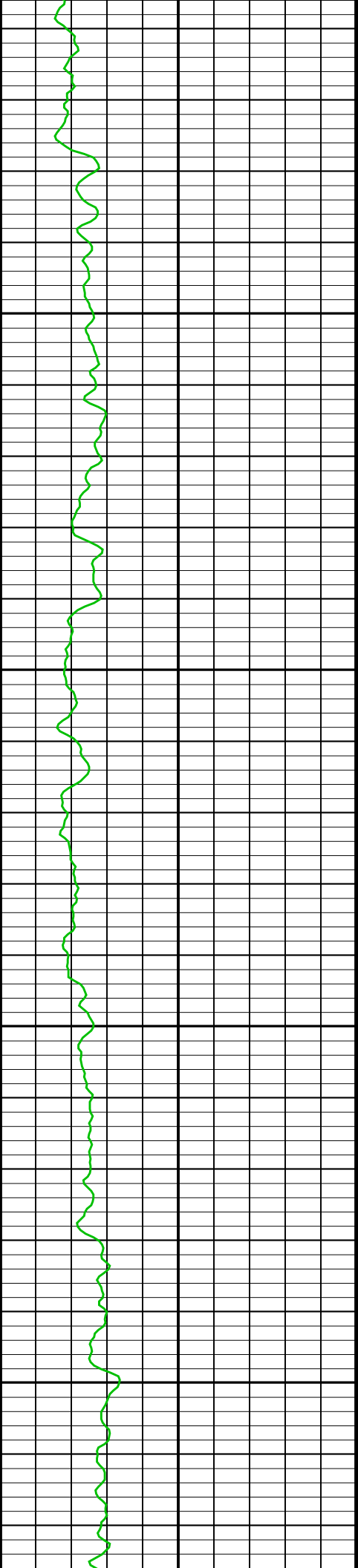




1200

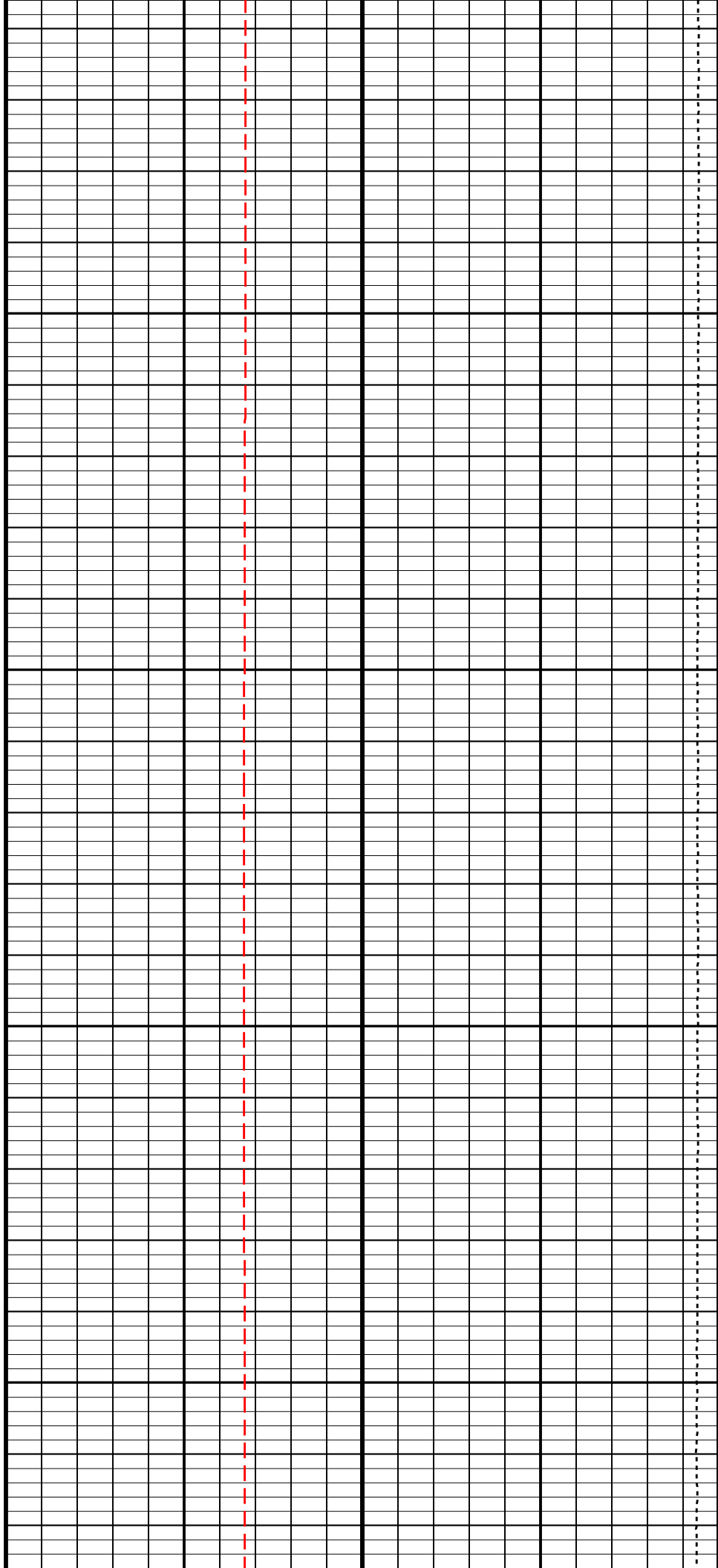
1300

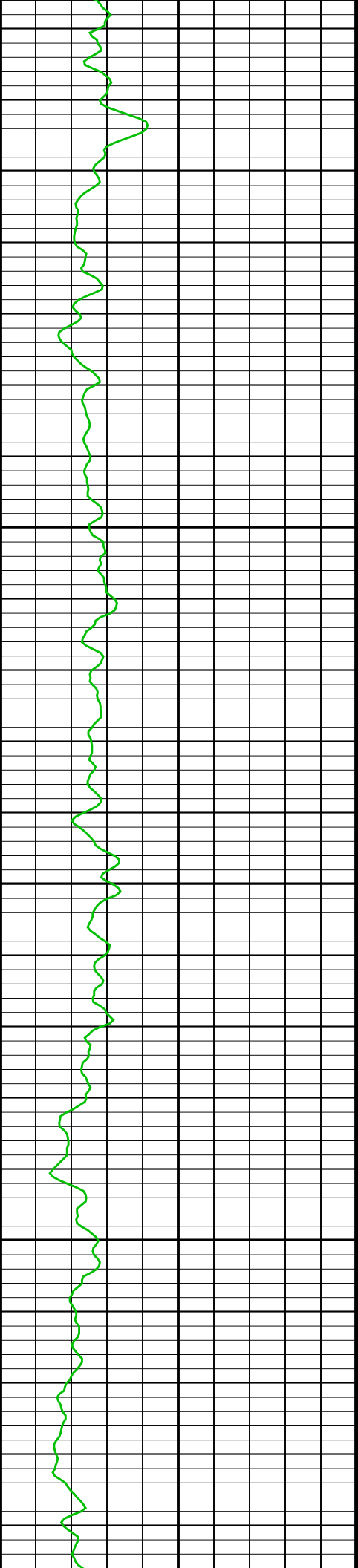




1400

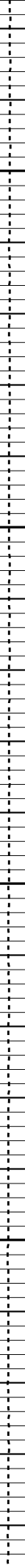
1500

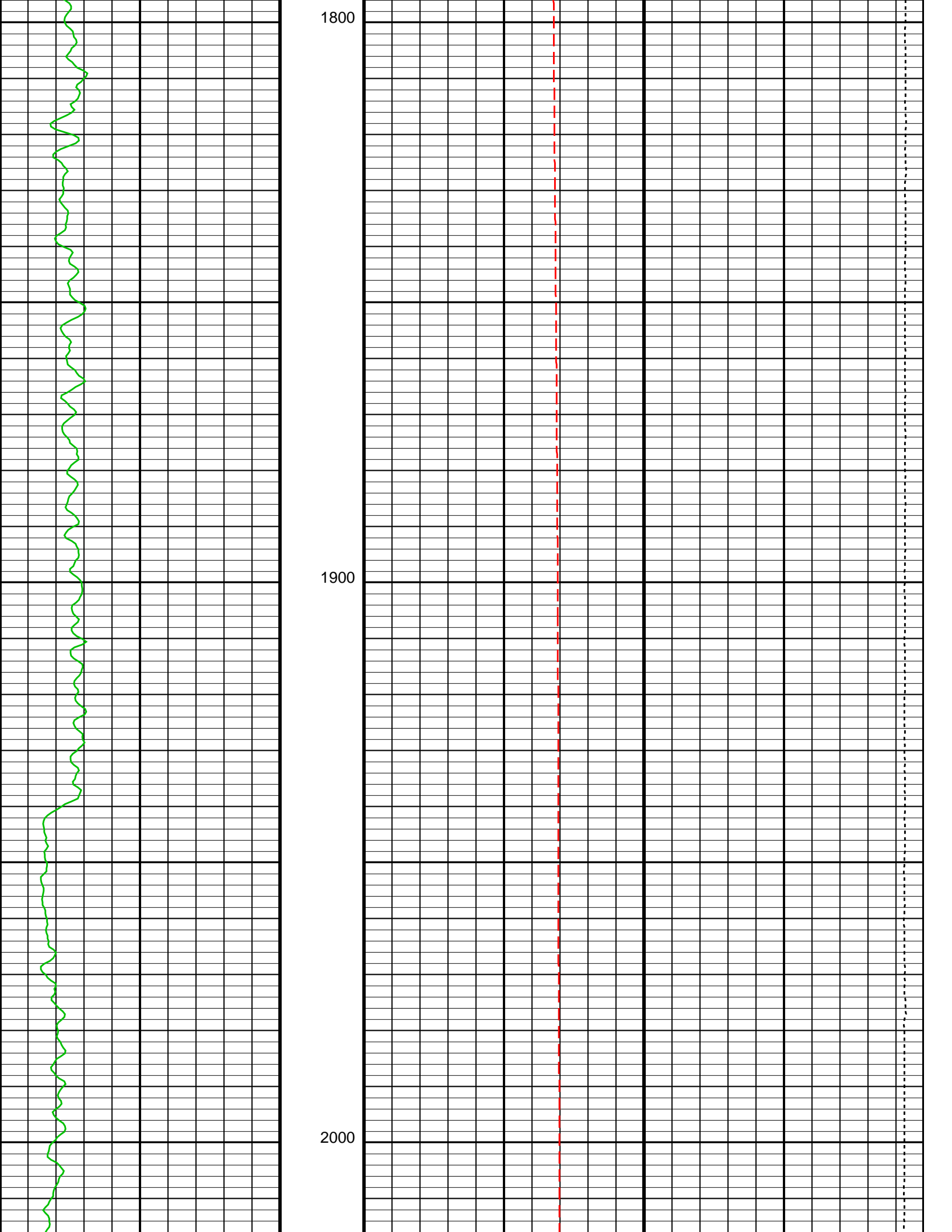


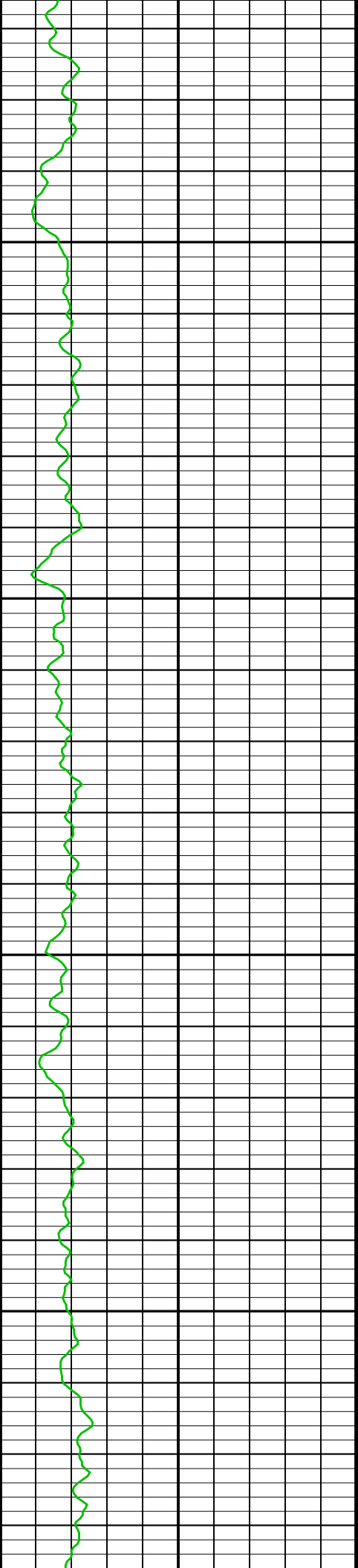


1600

1700

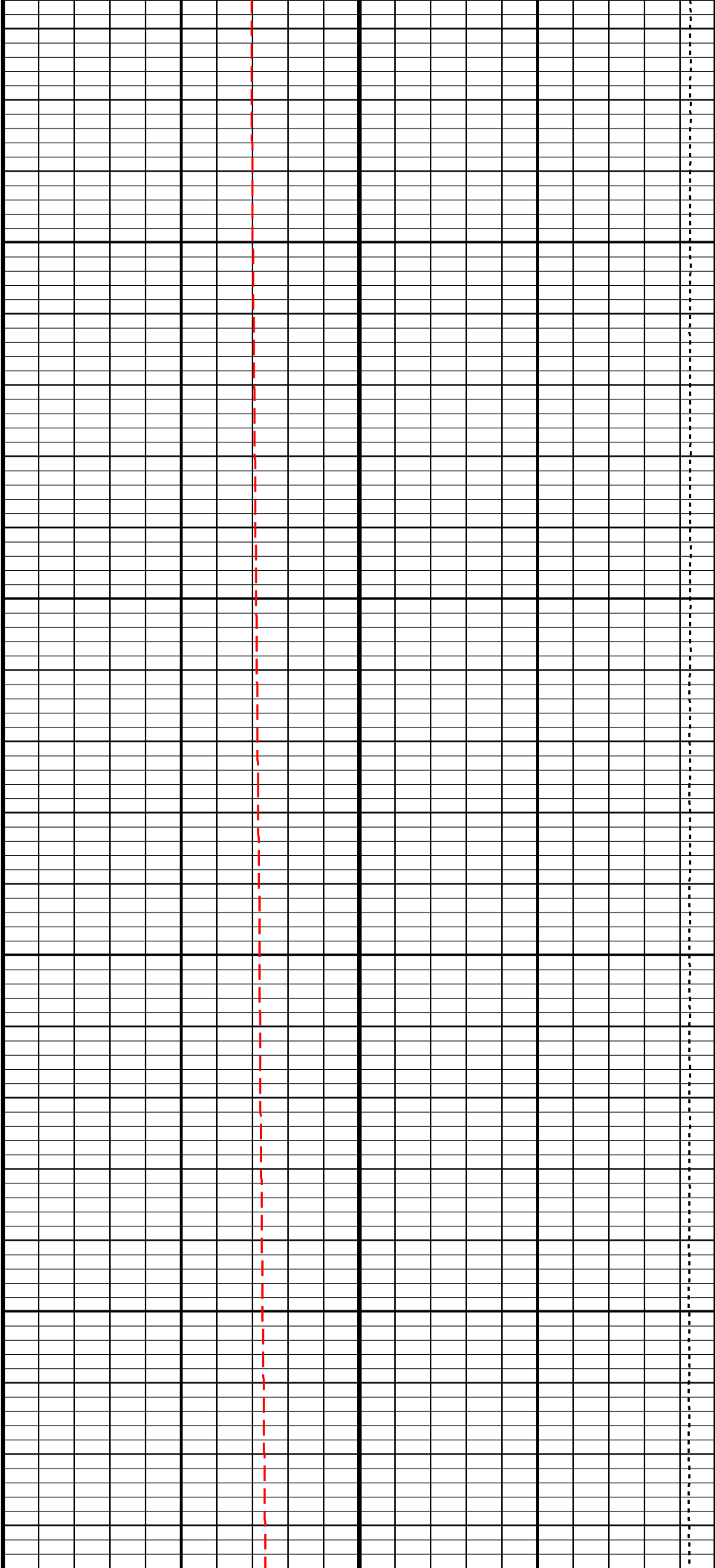


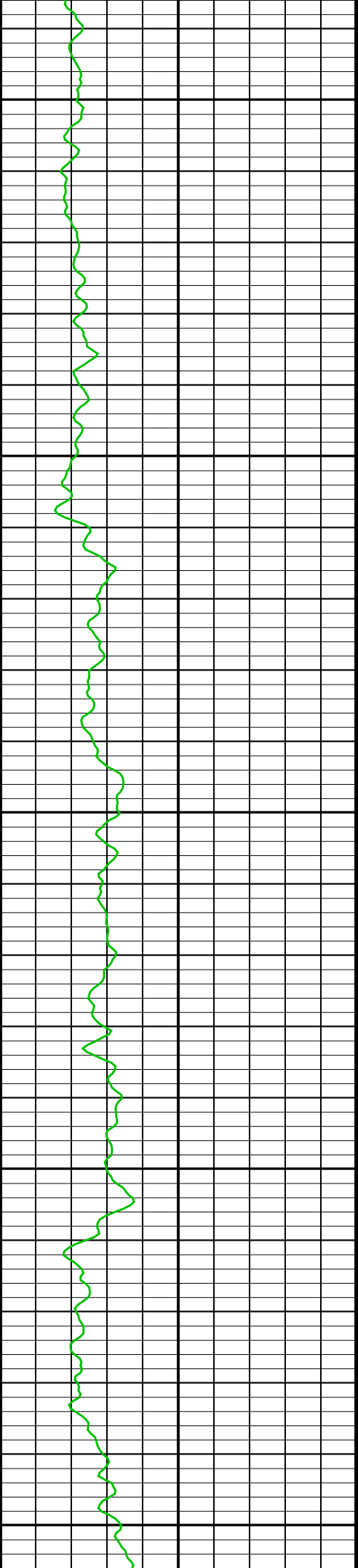




2100

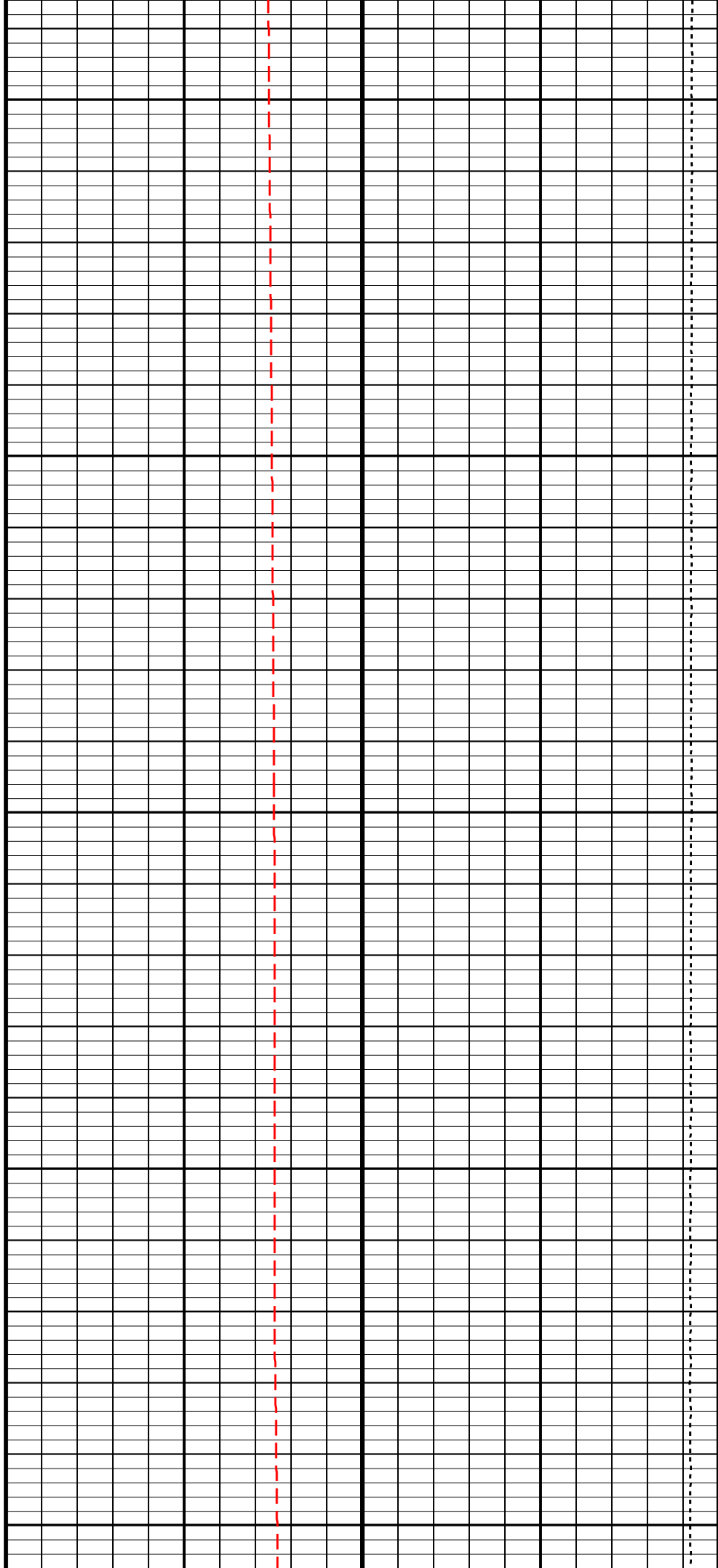
2200

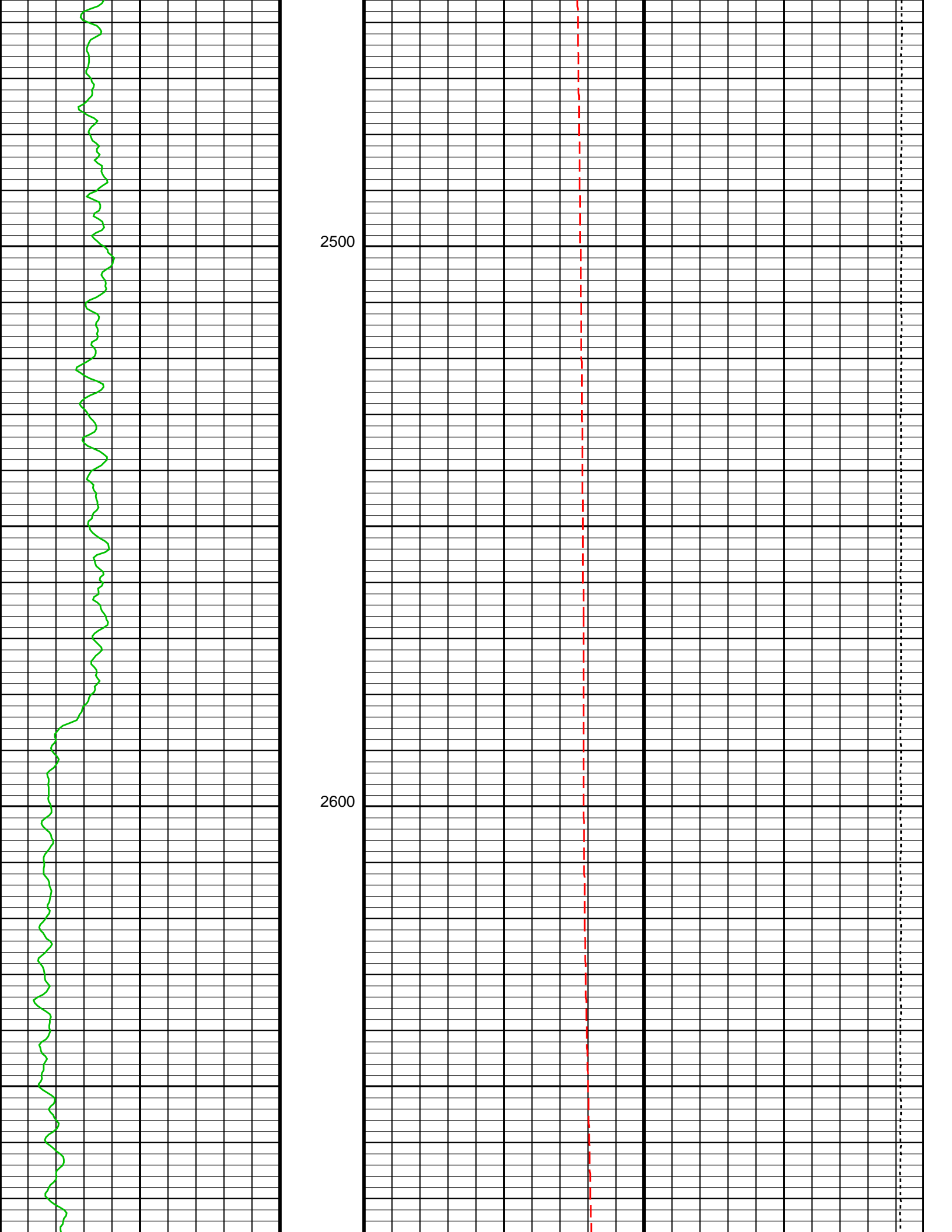


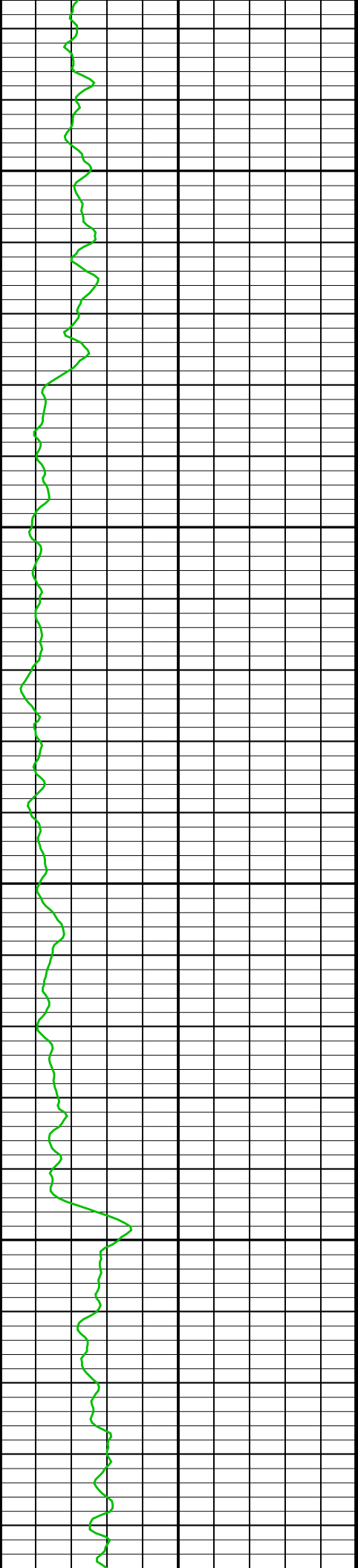


2300

2400

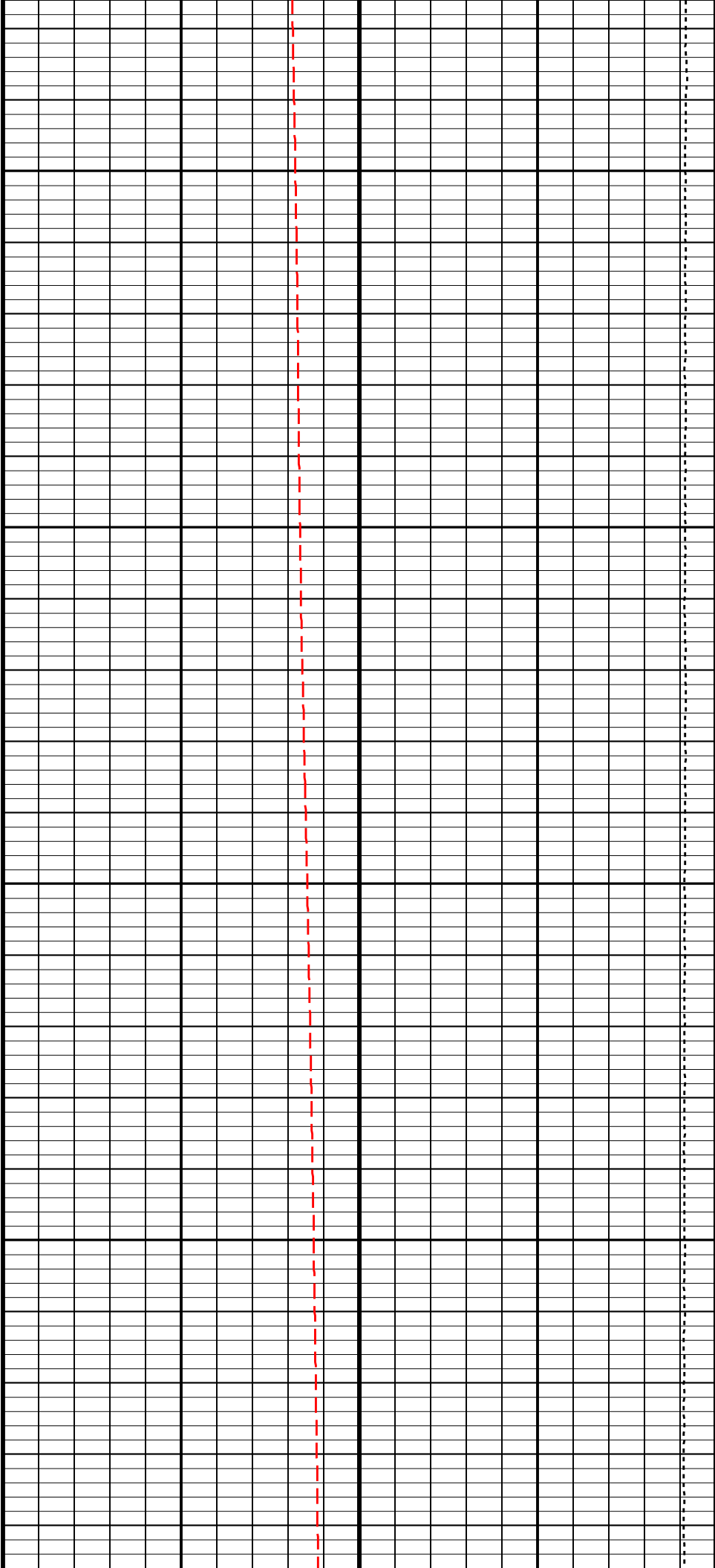


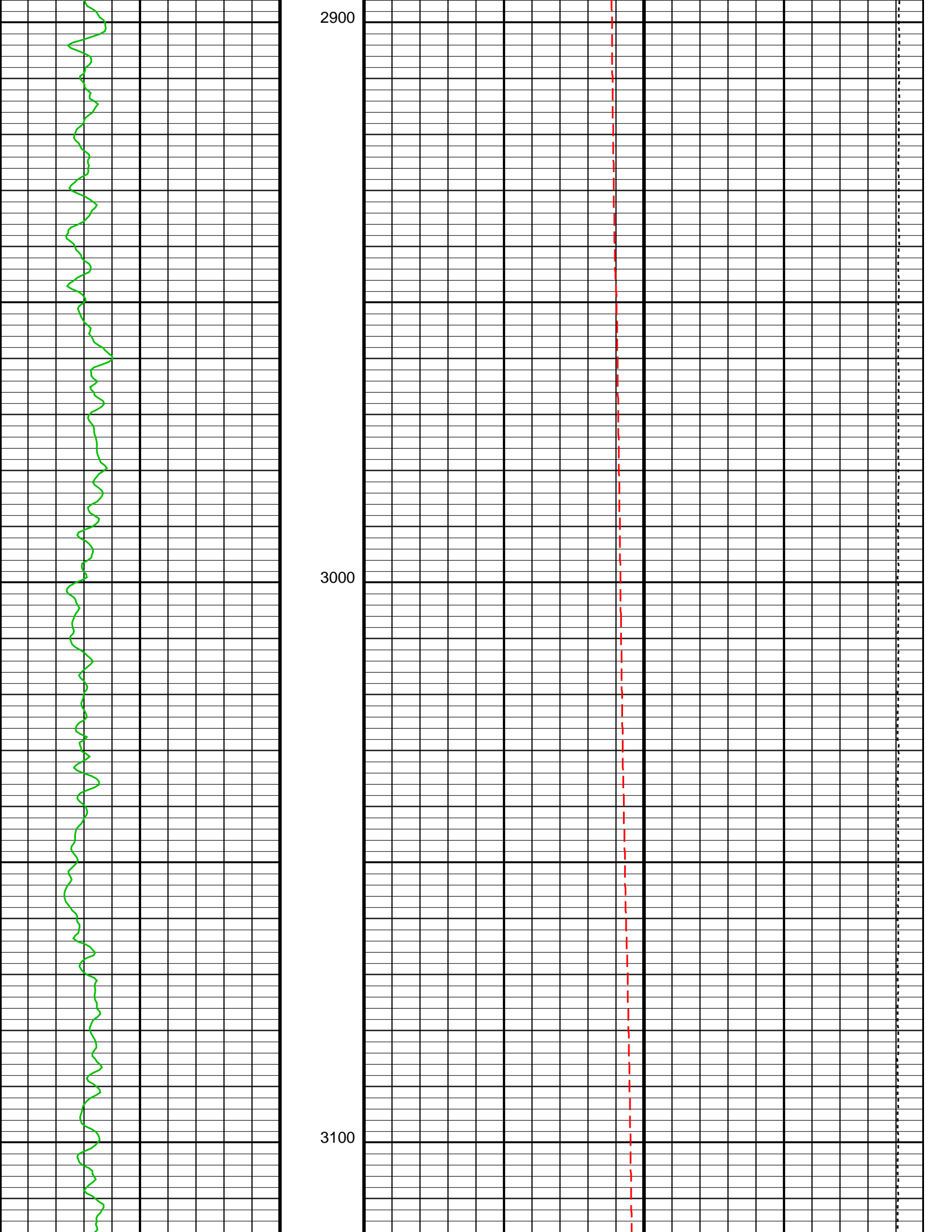


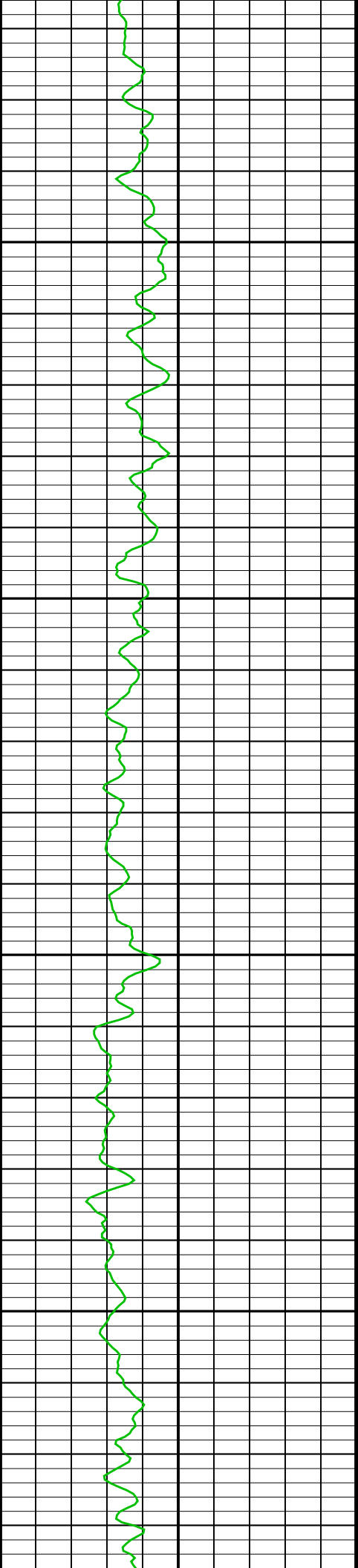


2700

2800

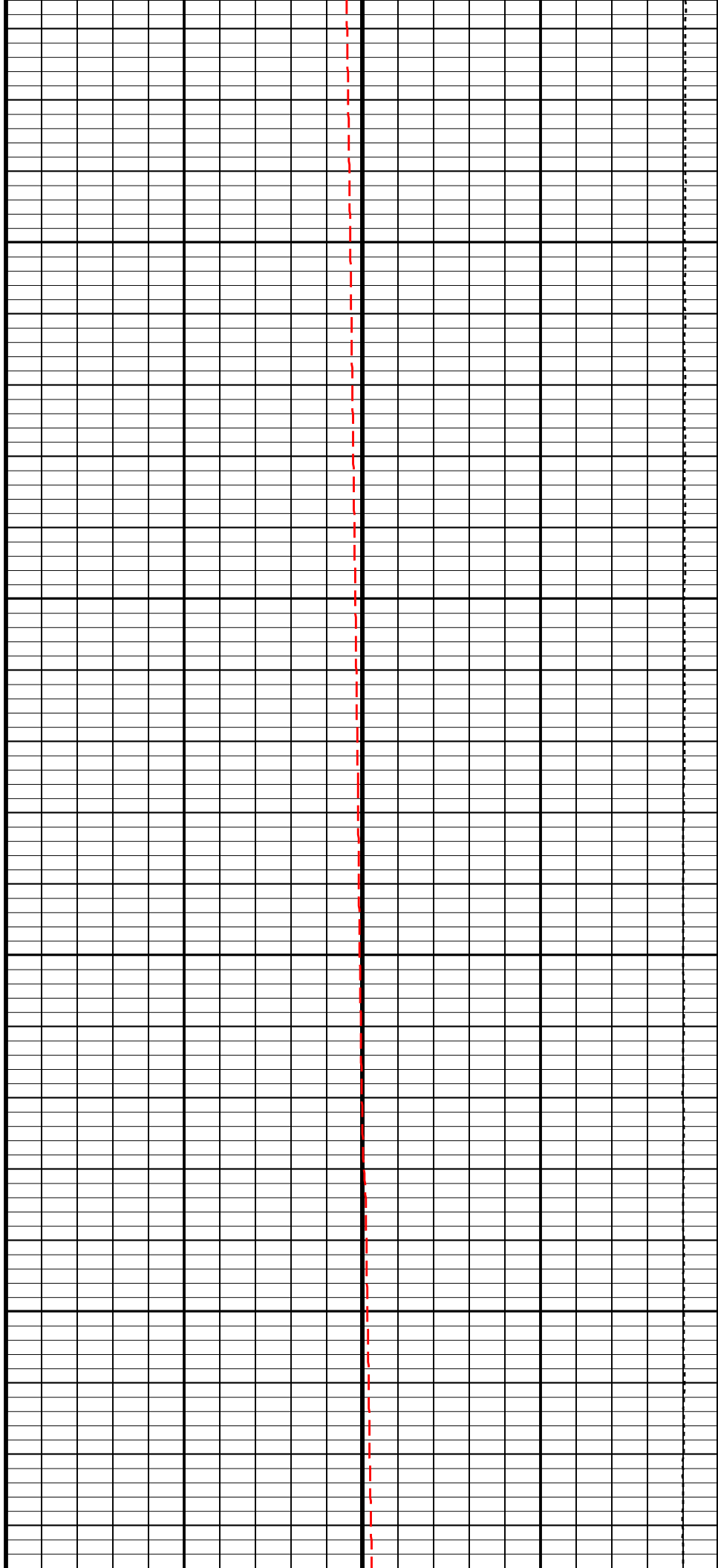


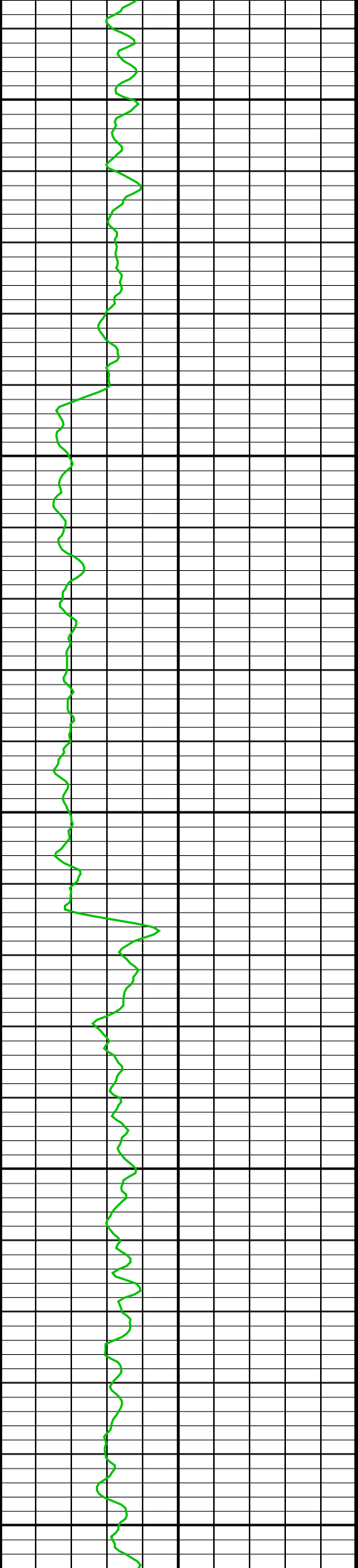




3200

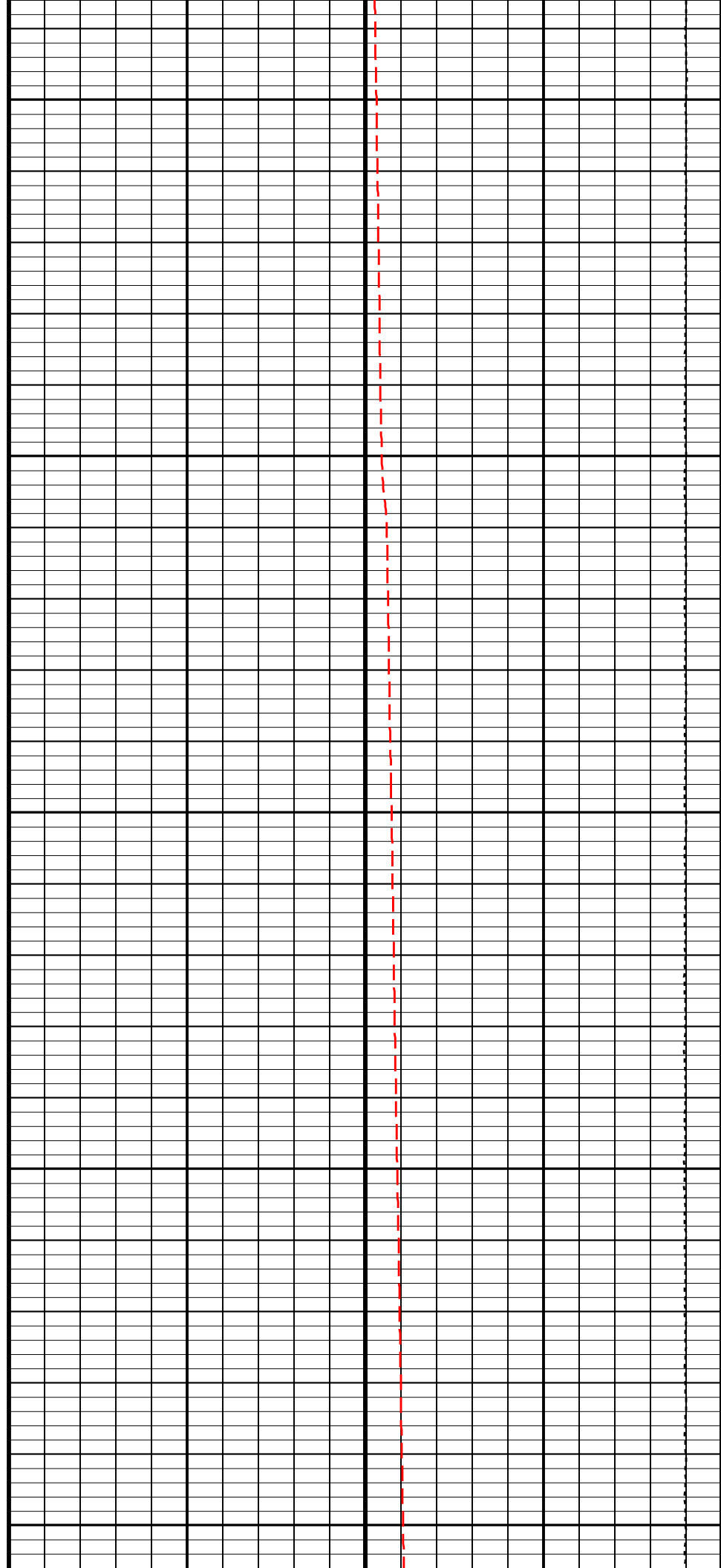
3300

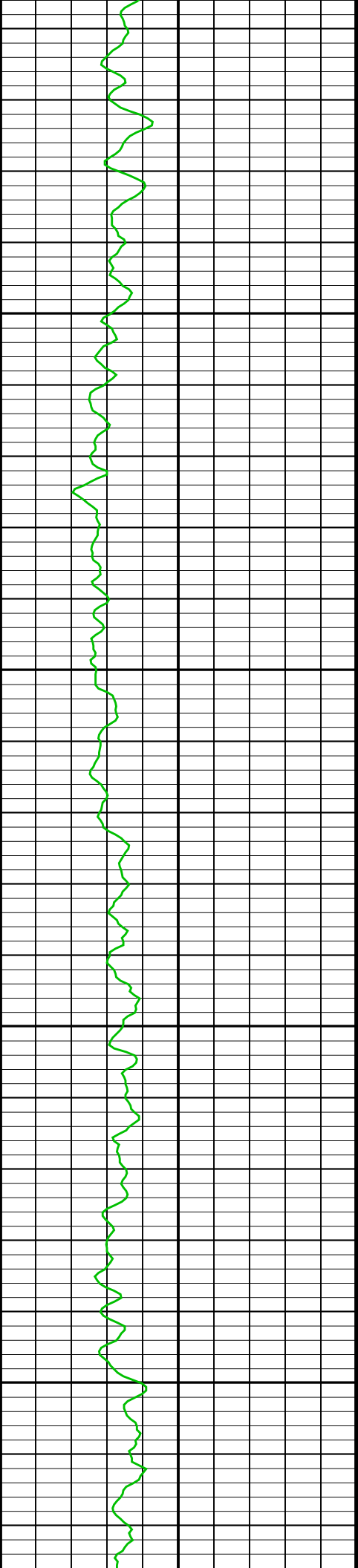




3400

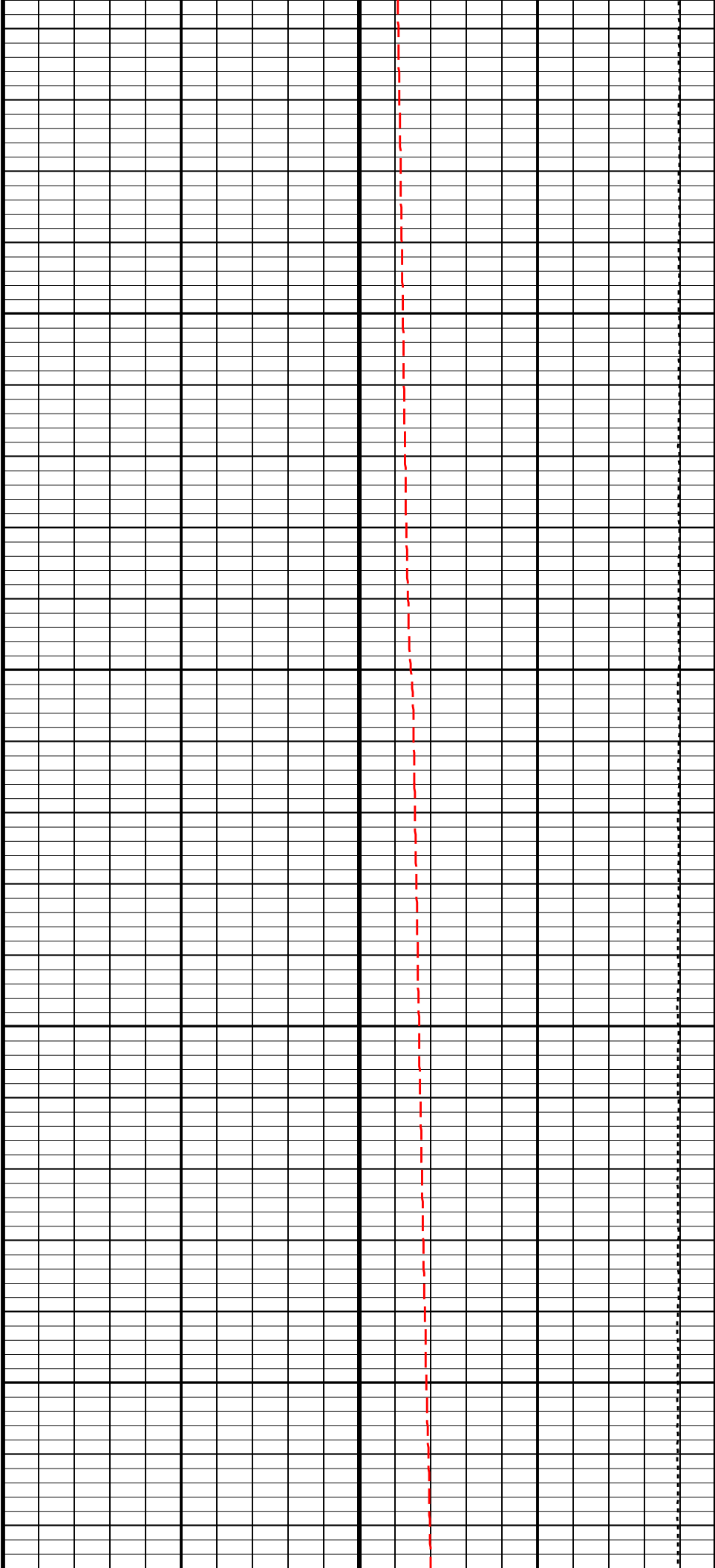
3500

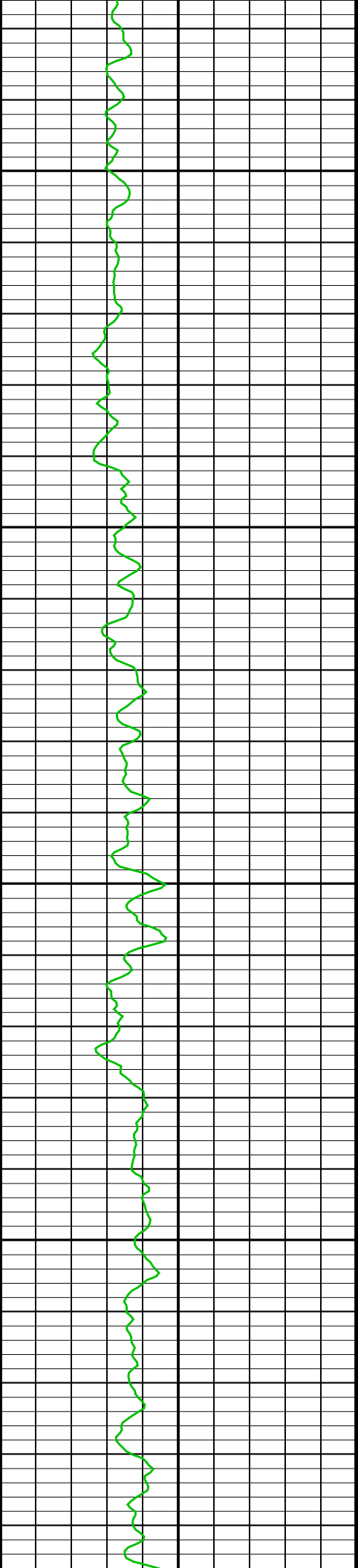




3600

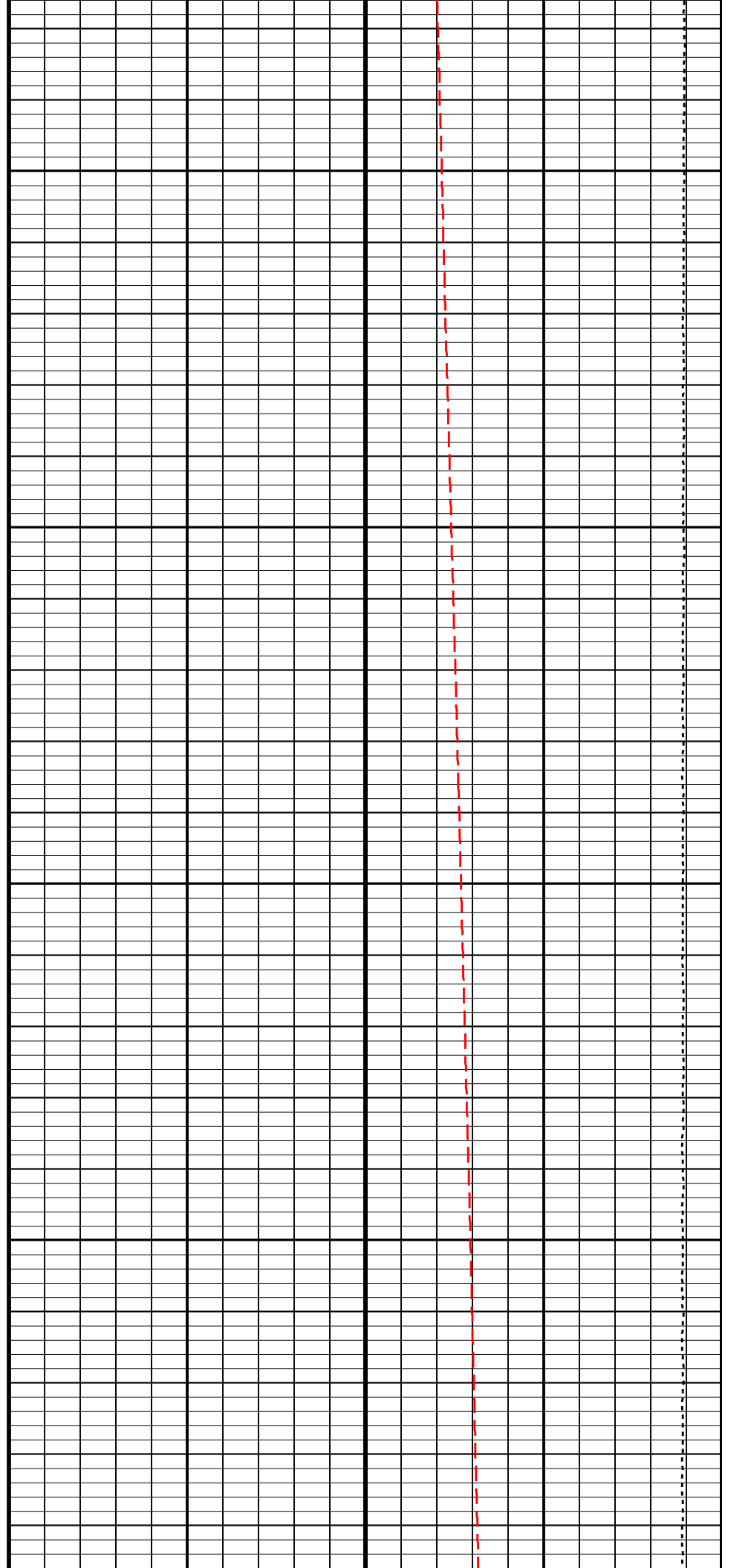
3700

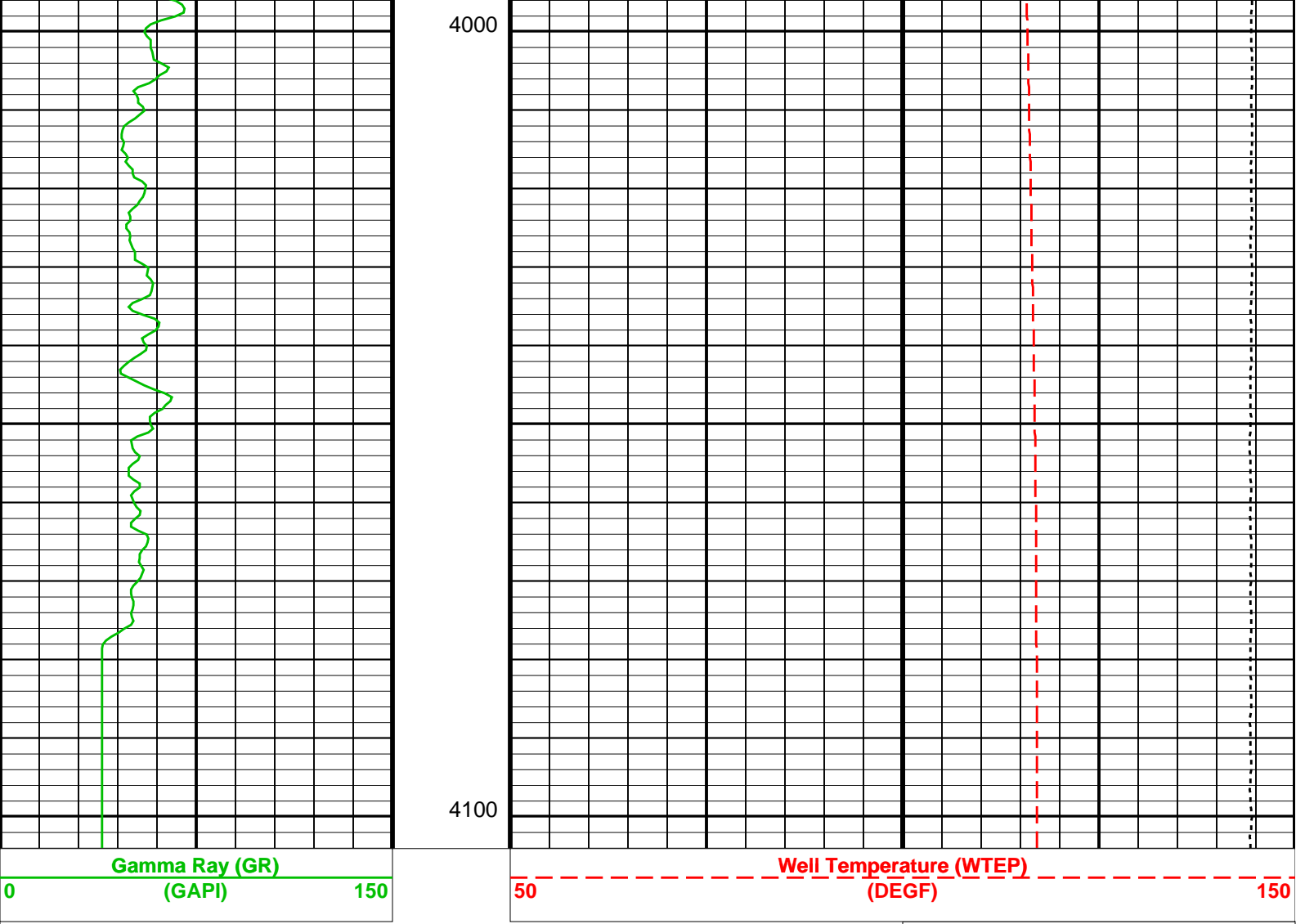




3800

3900





Parameters

DLIS Name	Description	Value
DO	System and Miscellaneous	
PP	Depth Offset for Playback	0.0 FT
	Playback Processing	NORMAL

Format: TEMPERATURE Vertical Scale: 5" per 100' Graphics File Created: 19-Apr-2009 14:01

OP System Version: 17C0-154

RST-C	17C0-154	PSPT-A/B	17C0-154
-------	----------	----------	----------

Input DLIS Files

DEFAULT	RST_PSP_064PUP	FN:82	PRODUCER	19-Apr-2009 12:52	4104.0 FT	5.0 FT
---------	----------------	-------	----------	-------------------	-----------	--------

Output DLIS Files

DEFAULT	RST_PSP_087PUP	FN:105	PRODUCER	19-Apr-2009 14:01
---------	----------------	--------	----------	-------------------

County: **Walla Walla**
State: **Washington**

RESERVOIR SATURATION TOOL
SIGMA PASS