

COMPACT AUTHORITY/ACTIVATION

The mobilization plan is authorized under Article VI of the Southeastern States Forest Fire Compact Commission Bylaws and Article VI of the South Central States Fire Compact Commission Bylaws.

Officers of the Southeastern States Forest Fire Compact Commission are filled annually on a rotation basis. Current officers are as follows:

Chair:	Brandon Howard (Kentucky)
Vice-Chair	Russell Bozeman (Mississippi)
Secretary-Treasurer:	Greg Hicks (North Carolina)

Officers of the South Central States Forest Fire Protection Compact are filled on an annual rotation basis. Current officers are as follows:

Chair:	Al Davis (Texas)
Vice Chair:	Kyle Cunningham (Arkansas)
Secretary-Treasurer:	Wade Dubea (Louisiana)

The Compact Coordinator for both Compacts is ordinarily the Southern Group of State Foresters Fire Director, and the Deputy Compact Coordinator is the Southern Area Coordinator. Current incumbents are:

Compact Coordinator:	Jim Prevette
Deputy Coordinator:	Nancy Ellsworth (SACC)

Either Compact is activated when the Compact Coordinator or Deputy is notified by a member state, or when a member state places a compact resource order requesting resources (see "Mobilization" below). When one Compact is activated, the Compact Coordinator or Deputy will notify the Chair of the Southeast and the South Central Compacts. Dispatching assistance is usually provided by the Southern Area Coordination Center (SACC).

OBJECTIVES AND CONTENT

- Provide an orderly, timely, cost-efficient method of providing aid to requesting Compact states.
- Ensure that aid can be obtained rapidly.
- Provide a system to collect and distribute timely fire information between Compact states.
- Provide a means of dispatching resources both within and outside the Compact.
- Provide for Compact Incident Reviews.
- Establish a listing of Compact resources.

**MUTUAL AID PROCEDURES
PREMOBILIZATION**

Each Compact state will furnish the Coordinator with a listing of resources available as outlined in the appendix by January 1 each year. (APPENDIX F)

MOBILIZATION**Compact Activation**

Coordinator will advise Compact Chairpersons that a Compact has been activated and keep the Compact Chairpersons advised.

Aid Request

Resource orders for compact resources will be generated by the requesting state dispatch center utilizing the Interagency Resource Ordering Capability (IROC) system indicating "Compact Request". The requesting state dispatch center will place the IROC Compact Request with SACC. The Compact Coordinator will work with the states to locate the resource using closest resource concept and place the order to the appropriate state dispatch center.

Compact State Aid Available

The Coordinator will contact the compact states best able to meet the request.

No Compact Aid Available

The Coordinator will continue to contact other States, U.S. Forest Service, cooperators, other fire protection compacts, and other sources until the requested resources are located. Requesting state will be contacted for decision before a firm order is made.

Dispatch Procedure

The Coordinator will work with both the receiving and sending agency to coordinate times, places, equipment transportation, and lengths of service.

Liaison Officer

A Liaison Officer from the aiding State shall be provided when multiple resources are requested, i.e., two tractor units - one liaison officer; six tractor units- two liaison officers.

Radio Frequencies

Prior to dispatch it is recommended that the responding resources program their radios with the receiving state's frequencies. The information can be found in the members only section of the SGSF's website.

Interstate Equipment Travel Restrictions

The Coordinator will work with individual states to provide appropriate clearances.

Information

Information regarding Compact resources within a receiving state will be passed through the Coordinator to the sending State. Information regarding the news media will be handled by each state. The Compact Coordinator shall be prepared to provide information on general Compact activities.

Food and Sleeping Facilities

These will be provided by the receiving state; unless other arrangements are made in advance. The sending state will be reimbursed for per diem while resources are traveling to and from the incident.

Supervision

Incident supervision will usually be provided by the receiving state. However, if the receiving state does not have sufficient qualified overhead, appropriate overhead should be requested through the Compact.

Pay Rates

Personnel and equipment reimbursements will be at the rates currently published by respective states. The rates provided in Appendix F should be regarded as examples only and are subject to change.

The sending state will supply sufficient communications equipment for its crews to interface with the receiving state. Additional communication support should be ordered through Coordinator.

DEMOBILIZATION**Release priority**

Out of State personnel and equipment shall be released as soon as fire conditions warrant. The Coordinator shall be notified when release is imminent and when accomplished. It shall be the Coordinator's responsibility to notify the states when their resources are released, and to relay their ETA at headquarters.

Equipment Return

The receiving state is responsible for repair or reimbursement for damaged or lost tools and equipment. Records of hours and/or miles used must be returned with equipment so that servicing or overhaul can be arranged. The sending state should send mechanically sound equipment. The receiving state should make notations of any equipment deficiency upon arrival.

Reimbursement Vouchers

The sending state will send the receiving state reimbursement vouchers within 30 days after return of personnel and/or equipment.

Narrative Report

Both the sending and receiving states will send a written critique on all phases of their part of the mutual aid operation to the Compact Coordinator. This report will serve as supporting material for incident reviews.

FIRE EMERGENCIES**Outside compact area**

Each state will maintain internal Cooperative Agreements dealing with agency fire assistance.

Between compacts

The Southeastern States Compact Coordinator will coordinate with his or her counterpart in other compacts if assistance is being requested or if resources are being sent to a Southern Area Compact. Normal dispatch procedures will be followed in handling resources.

COMPACT INCIDENT REVIEW**Purpose**

When significant mutual aid is requested and used, an Incident Review shall be made to determine efficiency and effectiveness of the Compact action.

Time and place

The Compact Coordinator shall identify a suitable meeting location and schedule the Incident Review at a convenient time in the aided State.

REVIEW TEAM MAKE-UP

- State Forester and Fire Chief of receiving state.
- Fire Chief of sending state or states.
- Representative of U.S. Forest Service, Fire and Aviation in the receiving State.
- Fire Chief and Staff from other Compact states, as desired.
- Compact Coordinator.

SUPPORTING INFORMATION

Suppression personnel involved in the incident may be asked to participate in the Review. Any supporting material such as maps, time records, weather records, and critiques should be available for the Review.

INCIDENT REPORT

The Compact Coordinator shall prepare a written report of all findings including recommendations for future operations. This report will be sent to all member states and U.S. Forest Service, Fire and Aviation.

STANDARD DISPATCHES

Personnel assigned on compact orders will receive a minimum of eight (8) hours of work time per day, with the receiving state reimbursing for the base 8 plus any overtime. These procedures apply to any vehicle or equipment responding to a compact or federal assignment across state lines. This includes, but is not limited to, wildland fire engines, dozers, tractor-plows, ATVs, transports and hand tools. In order to prevent the spread of noxious weeds, the follow procedures will be used:

The procedures are:

- Clean emergency response rolling stock before departure from, or return to, home unit.
- High pressure spray exteriors, undercarriage, tires, rims, tracks, etc. to remove dirt and debris.
- Air blow or water spray radiators and pickup beds.
- Ensure that cleaning is completed at a non-sensitive location to avoid creating a new problem.
- Inspect units upon arrival at assignment and before departure.
- High pressure spray all fire line hand tools.

SHARED RESOURCES**Examples of resources available through the compacts****Aviation**

- Helicopter Buckets
- Airtankers
- Helicopters
- Air Transport
- Retardant Mixing Facilities - portable Long and Short Term
- Aerial Ignition Systems

Personnel

- Hand Crews (20 person)
- Fire Behavior Analyst
- Air Attack Group Supervisors
- Dispatchers
- Communications Unit Leaders
- Air Operations Branch Director
- Air Support Group Supervisor

Specialized Water Handling Equipment

- Portable Pumps
- Irrigation Pumps/Systems
- Large Volume Pumps

Tractor-Plow Units

- High Flotation by size class

All-Terrain Vehicles

- Water Handling
- Non-water Handling

Kitchens**Mobile Command Posts****Portable Bridges****INITIAL BRIEFING FOR STATE CREWS**

The sending state will:

- Ensure that all personnel are qualified to fill their assigned position. Ensure that crews come equipped with standard PPE, including hard hats, gloves, fire shirts and pants, goggles, gloves, fire shelters and any other safety equipment needed for the job.

The Compact Coordinator will:

- Ensure that receiving state brief out-of-State crews upon entering the state and that Compact policy is followed.

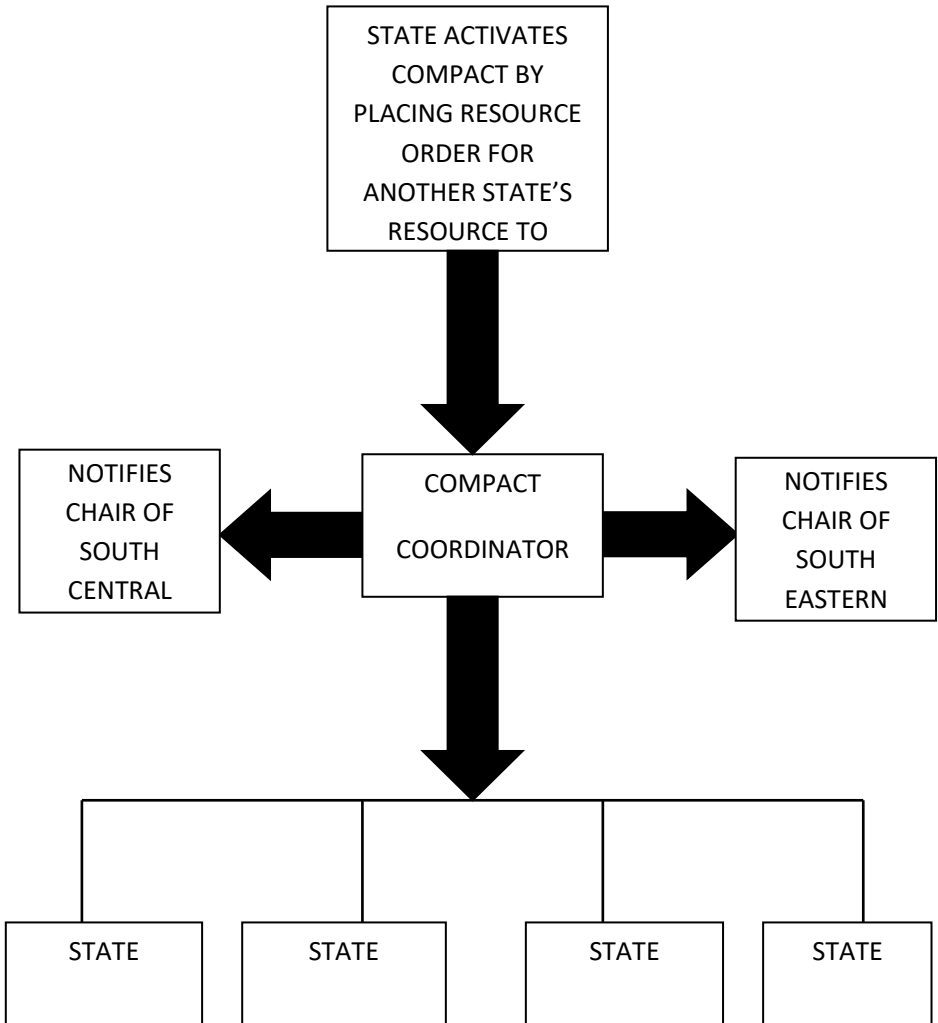
The receiving state will conduct a briefing covering:

- Fire situation and expected behavior.
- Assignment area
- Terrain
- Fuels
- Supervision
- Location of housing, feeding
- Logistical support - fuel, grease, repair, etc.
- Fire headquarters
- Social customs
- Local maps
- Resource values at risk
- Safety items
- State laws, traffic, regulations, and restrictions
- State policy
- Other pertinent information

APPENDIX B**COMPACT ACTIVATION CHECKLIST**

- Determine need for resources.
- Verbal and written notification of compact activation (to the compact by the requesting State) is preferred for record keeping.
- Compact Coordinator will notify the appropriate Compact Chair. The chair will send a notification of Compact activation.
- Compact Coordinator will notify the adjoining Compact Chair.
- The requesting state dispatch office will enter the Resource Order into IROC indicating it is a compact request.
- Compact Coordinator will work with the states to locate the resource. (Normally following the closest resource concept).
- Demob will follow the normal demob process; release information, ETD's and ETA's will be entered into IROC.
- The Compact Coordinator will update the Compact Chair, as needed, of the situation and actions taken.
- Once the fire emergency has subsided and all compact resources have returned to their home State, the requesting State shall notify the compact coordinator that the compact has been de-activated. Both verbal and written notification is preferred.

APPENDIX C



The State Dispatch Office, when placing the resource order, will indicate “Compact Request”.

Upon activation of a compact, a courtesy call will be given to the adjoining compact chair.

The Compact Coordinator will keep the compact chair advised to the situation and actions taken.

**APPENDIX D
2024
SOUTHERN FIRE CHIEFS DIRECTORY**

**ALABAMA FORESTRY
COMMISSION
JOHN GOFF**

513 MADISON AVE
MONTGOMERY, AL 36104
PHONE 334/240-9335
FAX 334/353-0124
CELL 256/626-2218
E-MAIL
John.Goff@forestry.alabama.gov

**NORTH CAROLINA FOREST
SERVICE**

GAIL BLEDSOE
1616 MAIL SERVICE CENTER
RALEIGH, NC 27699-1600
CELL 919/219-7917
FAX 919/857-4806
E-MAIL gail.bledsoe@ncagr.gov

**ARKANSAS DEPARTMENT OF
AGRICULTURE FORESTRY
DIVISION**

ROBERT MURPHY
#1 NATURAL RESOURCE DR.
LITTLE ROCK, AR 72205
CELL 870/723-8110
E-MAIL
Robert.d.murphy@agriculture.arkansas.gov

**OKLAHOMA DEPT. OF
AGRICULTURE
FORESTRY DIVISION**

ANDY JAMES
2800 NORTH LINCOLN BLVD
OKLAHOMA CITY, OK 73105
PHONE 405/823-6742
FAX 405/422-4583
E-MAIL andy.james@ag.ok.gov

**FLORIDA FOREST SERVICE
JOHN RAULERSON**

3125 CONNER BLVD
TALLAHASSEE, FL 32399-1650
PHONE 850/681-5919
CELL 850/228-7754
E-MAIL John.raulerson@fdacs.gov

**SOUTH CAROLINA FORESTRY
COMMISSION**

DARRYL JONES
P O BOX 21707
COLUMBIA, SC 29221-1707
PHONE 803/896-8817
CELL 803/667-1039
E-MAIL djones@forestry.state.sc.us

**GEORGIA FORESTRY
COMMISSION
FRANK SORRELLS**

5645 RIGGINS MILL RD.
MACON, GA 31202-0819
PHONE 478/751-3490
CELL 912/381-7503
FAX 478/751-3465
E-MAIL fsorrells@gfc.state.ga.us

**TENNESSEE DIVISION OF
FORESTRY
WADE WATERS**

P O BOX 40627, MELROSE STATION
NASHVILLE, TN 37204
PHONE 615/837-5425
CELL 615/761-7819
FAX 615/837-5129
E-MAIL wade.waters@tn.gov

**KENTUCKY DIVISION OF
FORESTRY**

MICHAEL FROELICH

300 SOWER BLVD.

FRANKFORT, KY 40601

PHONE 502/782-7159

CELL 502/682.4449

FAX 502/564-4245

E-MAIL michael.froelich@ky.gov

**LOUISIANA DEPT. OF
AGRICULTURE & FORESTRY
MATTHEW POLK**

5825 FLORIDA BLVD., SUITE
6000

BATON ROUGE, LA 70806

PHONE 225/925-4500

CELL 985/515-6845

FAX 225/922-1356

E-MAIL mpolk@ldaf.state.la.us

OR

ForestProtection@ldaf.state.la.us

**MISSISSIPPI FORESTRY
COMMISSION**

RANDY GIACHELLI

3139 HWY. 468 WEST

PEARL, MS 39208

CELL 601/850-8912

E-MAIL rgiachelli@mfc.ms.gov

**TEXAS A&M FOREST SERVICE
WES MOOREHEAD**

200 TECHNOLOGY WAY, SUITE 1162

COLLEGE STATION, TX 77845

PHONE 979/458-7344

CELL 936/546-1642

E-MAIL wmoorehead@tfs.tamu.edu

**VIRGINIA DEPARTMENT OF
FORESTRY
JOHN MILLER**

900 NATURAL RESOURCES DRIVE,
SUITE 800

CHARLOTTESVILLE, VA 22903

PHONE 434/220-9023

CELL 434/962-3484

FAX 434/977-9839

E-MAIL john.miller@dof.virginia.gov

**WEST VIRGINIA DIVISION OF
FORESTRY**

JEREMY JONES

7 PLAYERS CUB DRIVE

CHARLESTON, WV 25311

PHONE 304/352-4877

FAX 304/558-0143

CELL 304/552-4221

E-MAIL jeremy.c.jones@wv.gov

**APPENDIX E
2024
INCIDENT BUSINESS CONTACTS DIRECTORY**

**ALABAMA FORESTRY
COMMISSION
BALSIE BUTLER**

513 MADISON AVE
MONTGOMERY, AL 36104
PHONE 334/322-0849
FAX 334/240-9346
E-MAIL
balsie.butler@forestry.alabama.gov

**NORTH CAROLINA FOREST
SERVICE
CRAIG CLARKE**

1616 MAIL SERVICE CENTER
RALEIGH, NC 27699-1600
PHONE 919/857-4820
FAX 919/857-4802
E-MAIL CRAIG.CLARKE@NCAGR.GOV

**ARKANSAS DEPARTMENT OF
AGRICULTURE FORESTRY
DIVISION**

ELZA ALBERT
#1 NATURAL RESOURCE DR.
LITTLE ROCK, AR 72205
PHONE 501/219-6347
E-MAIL
elza.albert@agriculture.arkansas.gov

**OKLAHOMA DEPT. OF
AGRICULTURE
FORESTRY DIVISION**

ASHLEY JOHNSON
2800 NORTH LINCOLN BLVD.
OKLAHOMA CITY, OK 73105
PHONE 405/522-6157
FAX 405/522-4583
E-MAIL Ashley.johnson@ag.ok.gov

**FLORIDA FOREST SERVICE
LINDA PETERS**

3125 CONNER BLVD
TALLAHASSEE, FL 32399-1650
PHONE 850/681-5829
FAX 850/681-5802
E-MAIL linda.peters@fdacs.gov

**SOUTH CAROLINA FORESTRY
COMMISSION**

CATHY NORDEEN
P O BOX 21707
COLUMBIA, SC 29221-1707
PHONE 803/896-8865
E-MAIL cnordeen@scfc.gov

**GEORGIA FORESTRY
COMMISSION
MICHELE GRAY**

5645 RIGGINS MILL RD.
MACON, GA 31202-0819
PHONE 478/751-3466
FAX 478/751-3465
E-MAIL mgray@gfc.state.ga.us

**TENNESSEE DIVISION OF
FORESTRY
WADE WATERS**

P O BOX 40627, MELROSE STATION
NASHVILLE, TN 37204
PHONE 615/837-5425
CELL 615/761-7819
FAX 615/837-5129
E-MAIL wade.waters@tn.gov

**KENTUCKY DIVISION OF
FORESTRY**
MICHAEL FROELICH
300 SOWER BLVD.
FRANKFORT, KY 40601
PHONE 502/782-7159
FAX 502/564-4245
E-MAIL Michael.Froelich@ky.gov

**LOUISIANA DEPT. OF
AGRICULTURE & FORESTRY**
5825 FLORIDA BLVD., SUITE
6000
BATON ROUGE, LA 70806
PHONE 225/925-4500
CELL 985/515-6845
FAX 225/922-1356
E-MAIL mpolk@ldaf.state.la.us

**MISSISSIPPI FORESTRY
COMMISSION**
ROBIN LACKEY
3139 HWY. 468 WEST
PEARL, MS 39208
PHONE 601/359-2834
E-MAIL rlackey@mfc.ms.gov

TEXAS A&M FOREST SERVICE
VERONICA DAVENPORT
200 TECHNOLOGY WAY
COLLEGE STATION, TX 77845
PHONE 979/458-7356
CELL 979/209-4293
E-MAIL vdavenport@tfs.tamu.edu

**VIRGINIA DEPARTMENT OF
FORESTRY**
LAUREN SUMNER
900 NATURAL RESOURCES DRIVE
SUITE 800
CHARLOTTESVILLE, VA 22903
PHONE 434/220-9058
FAX 434/220-9155
E-MAIL lauren.sumner@dof.virginia.gov

**WEST VIRGINIA DIVISION OF
FORESTRY**
JEREMY JONES
7 PLAYERS CUB DRIVE
CHARLESTON, WV 25311
PHONE 304/352-4877
FAX 304/558-0143
CELL 304/552-4221
E-MAIL jeremy.c.jones@wv.gov

**APPENDIX F
SHARED RESOURCES**

To be sent to Compact Coordinator annually by January 1 (see page 100-179)

Note: These rates are for South Central and Southeastern Interstate Forest Fire Protection Compact resources for compact and national interagency incidents.

EQUIPMENT

NOTE: Receiving Units are responsible for repairing damaged equipment and, sending States are responsible for routine maintenance

Type:	
Make:	
Special Equipment: (LGP, Plow Type, Blade Type, With Foam, etc.)	
Special Moving Requirements: (Oversized Load, etc.)	
Rates: Per Hour of Use w/Receiving State Supplying Fuel: Per Hour of Use w/Sending State Supplying Fuel: Per Mile w/Receiving State Supplying Fuel: Per Mile w/Sending State Supplying Fuel: Minimum Daily Charge Equipment: Transport Cost per Mile w/Receiving State supplying fuel: Transport Cost per Mile w/Sending State Supplying Fuel: Minimum Daily Charge for Transport: NOTE: List Operator Cost in Personnel Section.	

AIRCRAFT

Type:	
Make:	
Model:	
Special Equipment:	
Passenger Capacity (exclude pilot):	
Load Capacity or Retardant Gallons:	
Rate:: Per Hour of Use w/Receiving State Supplying Fuel: Per Hour of Use w/Sending State Supplying Fuel: Minimum Daily Charge:	
NOTE: List Operator Cost in Personnel Section:	

PERSONNEL

**NOTE: All Compact Personnel are guaranteed a Minimum of Eight Hours
per Day**

Qualifications:	
Standard Rate of Pay:	
Overtime Rate:	
Per Diem Rate, if Food and Lodging are not Provided:	

**ALABAMA FORESTRY COMMISSION
EQUIPMENT
2024 Rates**

NOTE: Receiving Units are responsible for repairing damaged equipment and, sending States are responsible for routine maintenance

Type:	Tractor Plow Unit/Dozier
Make:	John Deere 750 LGP (environmental cab)
Special Equipment: (LGP, Plow Type, Blade Type, With Foam, etc.)	Straight blade with six-way movement and rear mounted winch
Special Moving Requirements: (Oversized Load, etc.)	Semi-Truck/Tractor and Trailer "Oversized Load" (Permit Required)
Rates: Per Hour of Use w/Receiving State Supplying Fuel:	\$160/hour minus fuel used
Per Hour of Use w/Sending State Supplying Fuel:	\$200/hour
Minimum Daily Charge Equipment:	Minimum 5 hours per day (\$1,000/day)
Transport Cost per Mile w/Sending State Supplying Fuel:	\$2.75/mile
Minimum Daily Charge for Transport: NOTE: List Operator Cost in Personnel Section.	50 miles/day (\$137.50/day)

**Alabama Forestry Commission
EQUIPMENT
2024 Rates**

Type:	Tractor Plow Unit/Dozier
Make:	Caterpillar D7
Special Equipment: (LGP, Plow Type, Blade Type, With Foam, etc.)	Straight blade with four-way movement
Special Moving Requirements: (Oversized Load, etc.)	Semi-Truck/Tractor and Trailer "Oversized Load" (Permit Required)
Rates: Per Hour of Use w/Receiving State Supplying Fuel:	\$160/hour minus fuel used
Per Hour of Use w/Sending State Supplying Fuel:	\$200/hour
Minimum Daily Charge Equipment:	Minimum 5 hours per day \$1,000
Transport Cost per Mile w/Sending State Supplying Fuel:	\$2.75/mile
Minimum Daily Charge for Transport: NOTE: List Operator Cost in Personnel Section.	50 miles/day (\$137.50/day)

**ALABAMA FORESTRY COMMISSION
EQUIPMENT
2024 Rates**

Type:	Type 4 Tractor Plow Unit
Make:	John Deere 650
Special Equipment:	Rear FESCO plow, 6-point front blade
Special Moving Requirements:	Low Boy trailer
Rates:	
Per Hour of Use w/Receiving State Supplying Fuel:	\$125/hour, minus fuel used
Per Hour of Use w/Sending State Supplying Fuel:	\$125/hour
Minimum Daily Charge Equipment:	Minimum 5 hours per day (\$625/day)
Transport Cost per Mile w/Sending State Supplying Fuel:	\$2.75/mile
Minimum Daily Charge for Transport: NOTE: Operator Cost in Personnel Section.	50 miles/day (\$137.00/day)

**ALABAMA FORESTRY COMMISSION
EQUIPMENT
2024Rates**

Type:	Type 3 Tractor Plow Unit	Type 4 Tractor Plow Unit
Make:	Caterpillar D2/D4	John Deere 550
Special Equipment:	Rear FESCO plow, 6-point front blade	Rear FESCO plow, 6-point front blade
Special Moving Requirements: (Oversized Load, etc.)	Type 2 Transport	Type 2 Transport
Rates: Per Hour of Use w/Receiving State Supplying Fuel:	\$150/hour, minus fuel used	\$90/hour, minus fuel used
Per Hour of Use w/Sending State Supplying Fuel:	\$150/hour	\$90/hour
Minimum Daily Charge Equipment:	Minimum 5 hours per day (\$750/day)	Minimum 5 hours per day (\$450/day)
Transport Cost per Mile w/Sending State Supplying Fuel:	\$2.75/mile	\$2.75/mile
Minimum Daily Charge for Transport: NOTE: Operator Cost in Personnel Section.	50 miles/day (137.50/day)	50 miles/day (137.00/day)

**ALABAMA FORESTRY COMMISSION
EQUIPMENT
2024 Rates**

Type:	Type 3 Tractor Plow Unit	Type 5 Tractor Plow Unit
Make:	Caterpillar D3/D5	John Deere 450
Special Equipment:	Rear FESCO plow, 6-point front blade	Rear FESCO plow, 6-point front blade
Special Moving Requirements: (Oversized Load, etc.)	Type 2 Transport	Type 2 Transport
Rates: Per Hour of Use w/Receiving State Supplying Fuel:	\$160/hour, minus fuel used	\$80/hour, minus fuel used
Per Hour of Use w/Sending State Supplying Fuel:	\$200/hour	\$80/ hour
Minimum Daily Charge Equipment:	Minimum 5 hours per day (\$1,000/day)	Minimum 5 hours per day (\$400/day)
Transport Cost per Mile w/Sending State Supplying Fuel:	\$2.75/mile	\$2.75/mile
Minimum Daily Charge for Transport: NOTE: Operator Cost in Personnel Section.	50 miles/day (137.50/day)	50 miles/day (\$137.00/day)

**ALABAMA FORESTRY COMMISSION
EQUIPMENT
2024 Rates**

Type:	Type 4 Tractor Plow Unit
Make:	John Deere 550
Special Equipment:	Rear FESCO plow, 6-point front blade
Special Moving Requirements: (Oversized Load, etc.)	Type 2 Transport
Rates:	
Per Hour of Use w/Receiving State Supplying Fuel:	\$125/hour, minus fuel used
Per Hour of Use w/Sending State Supplying Fuel:	\$125/hour
Minimum Daily Charge Equipment:	Minimum 5 hours per day (\$625/day)
Transport Cost per Mile w/Sending State Supplying Fuel:	\$2.75/mile
Minimum Daily Charge for Transport: NOTE: Operator Cost in Personnel Section.	50 miles/day (137.50/day)

**ALABAMA FORESTRY COMMISSION
EQUIPMENT
2024 Rates**

Type:	Type 4 Tractor Plow Unit
Make:	John Deere 450
Special Equipment:	Rear FESCO plow, 6-point front blade
Special Moving Requirements: (Oversized Load, etc.)	Type 2 Transport
Rates: Per Hour of Use w/Receiving State Supplying Fuel:	\$100/hour, minus fuel used
Per Hour of Use w/Sending State Supplying Fuel:	\$100/ hour
Minimum Daily Charge Equipment:	Minimum 5 hours per day (\$500/day)
Transport Cost per Mile w/Sending State Supplying Fuel:	\$2.75/mile
Minimum Daily Charge for Transport: NOTE: Operator Cost in Personnel Section.	50 miles/day (\$137.50/day)

**ALABAMA FORESTRY COMMISSION
EQUIPMENT
2024 Rates**

Type:	Transports
Make:	Type 2 and Low-Boys
Special Equipment:	
Special Moving Requirements:	
Rates:	
Per Mile w/Receiving State Supplying Fuel:	\$2.75/mile, minus fuel used
Per Mile w/Sending State Supplying Fuel:	\$2.75/mile
Minimum Daily Charge Equipment: NOTE: Operator Cost in Personnel Section.	50 miles/day (\$137.00/day)

**ALABAMA FORESTRY COMMISSION
EQUIPMENT
2024 Rates**

Type:	ENGINE TYPE 6
Make:	FORD F-350
Special Equipment: (LGP, Plow Type, Blade Type, With Foam, etc.)	150 GALLON SLIP-ON UNIT, 2- or three-man crew
Special Moving Requirements: (Oversized Load, etc.)	
Rates: Per Mile w/Sending State Supplying Fuel:	\$1.00/per mile
Per Hour w/Sending State Supplying Fuel:	\$75.00/hour
Minimum Daily Charge Equipment:	\$450.00 per day
NOTE: List Operator Cost in Personnel Section.	Operator(s), foam, and their per diem are not included in equipment rate. See Personnel for operator rate. Charge per mile is used when traveling to and returning from the incident. Once on the incident the hourly rate applies with a minimum daily charge.

**ALABAMA FORESTRY COMMISSION
SUPPLIES
2024 Rates**

2024 Rates Type:	Foam, Suppressants, and Retardant
Make:	N/A
Special Equipment: (LGP, Plow Type, Blade Type, With Foam, etc.)	N/A
Special Moving Requirements: (Oversized Load, etc.)	N/A
Rates:	Foam, Suppressants, and Retardant:
Rate per Gallon:	Cost to be Determined at the Time of Dispatch.

**ALABAMA FORESTRY COMMISSION
EQUIPMENT
2024 Rates**

Type:	Pick-ups
Make:	¾ ton and ½ ton
Special Equipment:	Tank and pump (100 gal)
Special Moving Requirements:	
Rates:	
Per Mile w/Receiving State Supplying Fuel:	\$1.00/mile, minus fuel used
Per Mile w/Sending State Supplying Fuel:	\$1.00/mile
Minimum Daily Charge Equipment: NOTE: Operator Cost in Personnel Section.	80 miles/day (\$80.00/day)

**ALABAMA FORESTRY COMMISSION
EQUIPMENT
2024 Rates**

Type:	Sedans and SUVs
Make:	
Special Equipment:	
Special Moving Requirements:	
Rates:	
Per Mile w/Receiving State Supplying Fuel:	\$1.00/mile, minus fuel used
Per Mile w/Sending State Supplying Fuel:	\$1.00/mile
Minimum Daily Charge Equipment: NOTE: Operator Cost in Personnel Section.	80 miles/day (\$80.00/day)

**ALABAMA FORESTRY COMMISSION
EQUIPMENT
2024 Rates**

Type:	Logistics Support Trailer
Make:	Various
Special Equipment: (LGP, Plow Type, Blade Type, With Foam, etc.)	
Special Moving Requirements: (Oversized Load, etc.)	None
Rates:	
Per Hour of Use w/Receiving State Supplying Fuel:	N/A
Per Hour of Use w/Sending State Supplying Fuel:	N/A
Per Mile w/Receiving State Supplying Fuel:	N/A
Per Mile w/Sending State Supplying Fuel:	N/A
Minimum Daily Charge Equipment:	22 ft. – 39 ft. Travel Trailer - \$300 per day Trailer 40 ft. plus - \$800.00/day Cost of transport is dependent on the type of vehicle used. See Vehicle rates.
Transport Cost per Mile w/Receiving State supplying fuel:	See Pickups
Transport Cost per Mile w/Sending State Supplying Fuel:	See Pickups
Minimum Daily Charge for Transport: NOTE: List Operator Cost in Personnel Section.	N/A

**ALABAMA FORESTRY COMMISSION
EQUIPMENT
2024 Rates**

Type:	All-Terrain Vehicles (4-Wheeler, UTV, etc.)
Make:	Various
Special Equipment: (LGP, Plow Type, Blade Type, With Foam, etc.)	4WD
Special Moving Requirements: (Oversized Load, etc.)	Trailer Provided
Rates:	
Per Hour of Use w/Receiving State Supplying Fuel:	\$42.00/hour
Per Hour of Use w/Sending State Supplying Fuel:	\$42.00/hour
Per Mile w/Receiving State Supplying Fuel:	N/A
Per Mile w/Sending State Supplying Fuel:	N/A
Minimum Daily Charge Equipment:	\$336/Day 8 hours/day
Transport Cost per Mile w/Receiving State supplying fuel:	N/A
Transport Cost per Mile w/Sending State Supplying Fuel:	N/A
Minimum Daily Charge for Transport: NOTE: List Operator Cost in Personnel Section.	N/A

**ALABAMA FORESTRY COMMISSION
PERSONNEL****2024 Rates**

NOTE: All Compact Personnel are guaranteed a minimum of eight hours per day

Qualifications:	Twenty-person crew. Firefighter Type 2 and Type 1 with Crew Bosses to NWCG standards and Arduous Level Pack Test.
Standard Rate of Pay:	Base pay (40 hours per week) plus benefits
Overtime Rate:	Time and a half, plus benefits
Per Diem Rate, if Food and Lodging are not Provided:	Federal per diem rate for locality

**ALABAMA FORESTRY COMMISSION
PERSONNEL****2024 Rates**

Qualifications:	Equipment Operator and swamper, both Firefighter Type 2 to NWCG standards
Standard Rate of Pay:	Base pay (40 hours per week) plus benefits
Overtime Rate:	Time and a half, plus benefits
Per Diem Rate, if Food and Lodging are not Provided:	Federal per diem rate for locality

**ALABAMA FORESTRY COMMISSION
PERSONNEL****2024 Rates**

Qualifications:	Single Resource Overhead positions, certified to NWCG standards.
Standard Rate of Pay:	Base pay (40 hours per week) plus benefits
Overtime Rate:	Time and a half, plus benefits
Per Diem Rate, if Food and Lodging are not Provided:	Federal per diem rate for locality

**ALABAMA FORESTRY COMMISSION
PERSONNEL
2024 Rates**

Qualifications:	NWCG Qualified ICS position
Standard Rate of Pay:	Base pay (40 hours per week) plus benefits
Overtime Rate:	Time and a half, plus benefits
Per Diem Rate, if Food and Lodging are not Provided:	Federal per diem rate for locality

**ALABAMA FORESTRY COMMISSION
PERSONNEL
2024 Rates**

NOTE: All Compact Personnel are guaranteed a minimum of eight hours per day

Qualifications:	Type 2 and Type 3 Incident Management Teams (Wildfire and All Hazard)
Standard Rate of Pay:	Base pay (40 hours per week) plus benefits
Overtime Rate:	Time and a half, plus benefits
Per Diem Rate, if Food and Lodging are not Provided:	Federal per diem rate for locality

**ARKANSAS DEPARTMENT OF AGRICULTURE FORESTRY
DIVISION
EQUIPMENT
2024 Rates**

**NOTE: Receiving Units are responsible for repairing damaged equipment
and, sending States are responsible for routine maintenance**

Type:	Tractor w/plow or winch
Make:	JD450//CAT/D-4
Special Equipment: (LGP, Plow Type, Blade Type, With Foam, etc.)	LGP or LT and/or some with articulating v-blade
Special Moving Requirements: (Oversized Load, etc.)	Transports, Tandem axel
Rates: Per Hour of Use w/Receiving State Supplying Fuel:	\$85.00/Hr. Minimum 4 hrs./day (\$340.00)
Transport Cost per Mile w/Receiving State supplying fuel: NOTE: List Operator Cost in Personnel Section.	\$1.50/Mile Minimum \$75.00/day

**ARKANSAS DEPARTMENT OF AGRICULTURE FORESTRY
DIVISION
EQUIPMENT**

**NOTE: Receiving Units are responsible for repairing damaged equipment
and, sending States are responsible for routine maintenance**

2024 Rates

Type:	Tractor w/plow or winch
Make:	JD 550/650/Cat D5
Special Equipment: (LGP, Plow Type, Blade Type, With Foam, etc.)	LGP/XLT
Special Moving Requirements: (Oversized Load, etc.)	Transport tandem axle
Rates: Per Hour of Use w/Receiving State Supplying Fuel:	\$90.00/Hr. Minimum 4 hrs./day Minimum 4 hrs./day (\$360.00)
Per Hour of Use w/Sending State Supplying Fuel:	
Per Mile w/Receiving State Supplying Fuel:	\$1.50/mile tandem axle transport or \$2.50/mile truck tractor with lowboy
Per Mile w/Sending State Supplying Fuel:	
Minimum Daily Charge Equipment:	Minimum \$75.00/day
Transport Cost per Mile w/Receiving State supplying fuel:	
Transport Cost per Mile w/Sending State Supplying Fuel:	
Minimum Daily Charge for Transport:	
NOTE: List Operator Cost in Personnel Section.	

**ARKANSAS DEPARTMENT OF AGRICULTURE FORESTRY
DIVISION
EQUIPMENT
2024 Rates**

Type: Pick-up trucks, ½ -3/4 ton. SUV	Pickups, SUVs, and Vans
Make: various	Various
Special Equipment: (LGP, Plow Type, Blade Type, With Foam, etc.)	Can add on Pump and 100-gallon Water tank
Special Moving Requirements: (Oversized Load, etc.)	none
Rates: Per Mile w/Receiving State Supplying Fuel: NOTE: List Operator Cost in Personnel Section.	Without Pump and Tank \$.60/mile \$50.00/ day minimum With Pump and Tank \$.75/mile \$65.00/ day minimum

**ARKANSAS DEPARTMENT OF AGRICULTURE FORESTRY
DIVISION
EQUIPMENT**

2024 Rates

NOTE: Receiving Units are responsible for repairing damaged equipment and, sending States are responsible for routine maintenance

Type:	UTV with Skid Unit
Make:	Various
Special Equipment: (LGP, Plow Type, Blade Type, With Foam, etc.)	50-Gallon minimum tank size with
Special Moving Requirements: (Oversized Load, etc.)	Tandem axel trailer
Rates: Per Hour of Use w/Receiving State Supplying Fuel:	\$15.00/Hr. Minimum 2 hrs./day (\$30.00)
Transport Cost per Mile w/Receiving State supplying fuel: NOTE: List Operator Cost in Personnel Section.	

**ARKANSAS DEPARTMENT OF AGRICULTURE FORESTRY
DIVISION
AIRCRAFT
2024 Rates**

Type:	Fixed wing
Make:	Aero Commander
Model:	AC-500-B
Special Equipment:	GPS/Programmable Technisonic
Passenger Capacity (exclude pilot):	5
Load Capacity or Retardant Gallons:	N/A
Rate: Per Hour of Use w/Receiving State Supplying Fuel:	\$300/hr. \$300/hr.
Per Hour of Use w/Sending State Supplying Fuel:	
Minimum Daily Charge: NOTE: List Operator Cost in Personnel Section:	2.00 Hrs./day (\$600)

**ARKANSAS DEPARTMENT OF AGRICULTURE FORESTRY
DIVISION
AIRCRAFT
2024 Rates**

Type:	Fixed Wing
Make:	Cessna
Model:	P206
Special Equipment:	GPS/Programmable Technisonic
Passenger Capacity (exclude pilot):	5
Load Capacity or Retardant Gallons:	N/A
Rate: Per Hour of Use w/Receiving State Supplying Fuel:	\$200.00/hr.
Per Hour of Use w/Sending State Supplying Fuel:	
Minimum Daily Charge:	2.00 Hrs./day (\$400.00)
NOTE: List Operator Cost in Personnel Section:	

**ARKANSAS DEPARTMENT OF AGRICULTURE FORESTRY
DIVISION
AIRCRAFT
2024 Rates**

Type:	Fixed Wing
Make:	Cessna
Model:	182
Special Equipment:	GPS/Programmable Technisonic
Passenger Capacity (exclude pilot):	3
Load Capacity or Retardant Gallons:	N/A
Rate: Per Hour of Use w/Receiving State Supplying Fuel:	\$120.00/hr.
Per Hour of Use w/Sending State Supplying Fuel:	
Minimum Daily Charge:	2.00 Hrs./day (\$240.00)
NOTE: List Operator Cost in Personnel Section:	

**ARKANSAS DEPARTMENT OF AGRICULTURE FORESTRY
DIVISION
PERSONNEL**

**NOTE: All Compact Personnel are guaranteed a minimum of eight hours
per day**

2024 Rates

Qualifications:	Variable
Standard Rate of Pay:	Actual costs
Overtime Rate:	1.5 hrs. over 40 hrs.
Per Diem Rate, if Food and Lodging are not Provided:	Actual expenses

**FLORIDA FOREST SERVICE
EQUIPMENT**

**NOTE: Receiving Units are responsible for repairing damaged equipment
and, sending States are responsible for routine maintenance
2024 Rates**

Type:	Dozer/tractor plow units							
Make:	Various							
Special Equipment: (LGP, Plow Type, Blade Type, With Foam, etc.)	LGP, 2-disc, straight or v-blade							
Special Moving Requirements: (Oversized Load, etc.)	Requires hauling unit for road transport. Type 1 requires oversize load permit.							
Rates:	N/A							
Per Hour of Use w/Receiving State Supplying Fuel:	<table border="1"> <tr> <td>Type 1</td> <td>Type 2</td> </tr> <tr> <td>.</td> <td>\$124.00/hr</td> </tr> </table>		Type 1	Type 2	.	\$124.00/hr		
Type 1	Type 2							
.	\$124.00/hr							
Per Hour of Use w/Sending State Supplying Fuel:	<table border="1"> <tr> <td>Type 3</td> <td>Type 4</td> </tr> <tr> <td>\$108.00/hr</td> <td>\$96.00/hr.</td> </tr> <tr> <td>.</td> <td>.</td> </tr> </table>		Type 3	Type 4	\$108.00/hr	\$96.00/hr.	.	.
Type 3	Type 4							
\$108.00/hr	\$96.00/hr.							
.	.							
Per Mile w/Receiving State Supplying Fuel:	<table border="1"> <tr> <td>Type 3</td> <td>Type 4</td> </tr> <tr> <td>\$108.00/hr</td> <td>\$96.00/hr.</td> </tr> <tr> <td>.</td> <td>.</td> </tr> </table>		Type 3	Type 4	\$108.00/hr	\$96.00/hr.	.	.
Type 3	Type 4							
\$108.00/hr	\$96.00/hr.							
.	.							
Per Mile w/Sending State Supplying Fuel:	N/A							
Minimum Daily Charge Equipment:	N/A							
Transport Cost per Mile w/Receiving State supplying fuel:	Equipment is charged for the operational period except when in travel status to and from the receiving state, and then it is based on the hours of actual travel time while being transported.							
Transport Cost per Mile w/Sending State Supplying Fuel:	N/A							
Minimum Daily Charge for Transport: NOTE: List Operator Cost in Personnel Section.	See transport rates.							

FLORIDA FOREST SERVICE

EQUIPMENT

2024 Rates

Type:	Transports
Make:	Various
Special Equipment: (LGP, Plow Type, Blade Type, With Foam, etc.)	N/A
Special Moving Requirements: (Oversized Load, etc.)	N/A
Rates: Per Hour of Use w/Receiving State Supplying Fuel:	N/A
Per Hour of Use w/Sending State Supplying Fuel:	\$57.00/hr.
Per Mile w/Receiving State Supplying Fuel:	N/A
Per Mile w/Sending State Supplying Fuel:	N/A
Minimum Daily Charge Equipment:	Equipment is charged for the operational period except when in travel status to and from the receiving state, and then is based on the hours of actual travel time.
Transport Cost per Mile w/Receiving State supplying fuel:	N/A
Transport Cost per Mile w/Sending State Supplying Fuel:	N/A
Minimum Daily Charge for Transport: NOTE: List Operator Cost in Personnel Section.	N/A

**FLORIDA FOREST SERVICE
EQUIPMENT
2024 Rates**

Type:	Trailers (1 operator)		
Make:	Various		
Special Equipment: (LGP, Plow Type, Blade Type, With Foam, etc.)	N/A		
Special Moving Requirements: (Oversized Load, etc.)	Requires hauling unit for road transport.		
Rates: Per Hour of Use w/Receiving State Supplying Fuel:	N/A		
Per Hour of Use w/Sending State Supplying Fuel:	Logistics	Refrigerated	Ground Support w/ office
	\$200.00/ daily	\$303.00/dail y	\$330.00 /daily
Per Mile w/Receiving State Supplying Fuel:	N/A		
Per Mile w/Sending State Supplying Fuel:	N/A		
Minimum Daily Charge Equipment:	N/A		
Transport Cost per Mile w/Receiving State supplying fuel:	N/A		
Transport Cost per Mile w/Sending State Supplying Fuel:	N/A		
Minimum Daily Charge for Transport: NOTE: List Operator Cost in Personnel Section.	The cost of the transport is included with the daily rate.		

**FLORIDA FOREST SERVICE
EQUIPMENT
2024 Rates**

Type:	Engines (2 operators)	
Make:	Various	
Special Equipment: (LGP, Plow Type, Blade Type, With Foam, etc.)	Foam proportioned/aux. motor/pump	
Special Moving Requirements: (Oversized Load, etc.)	N/A	
Rates:	N/A	
Per Hour of Use w/Receiving State Supplying Fuel:	N/A	
Per Hour of Use w/Sending State Supplying Fuel:	Type 3	Type 6
	\$55.00/hr.	\$48.00/hr.
Per Mile w/Receiving State Supplying Fuel:	N/A	
Per Mile w/Sending State Supplying Fuel:	N/A	
Minimum Daily Charge Equipment:	Equipment is charged for the operational period except when in travel status to and from the receiving state, and then it is based on the hours of actual travel time.	
Transport Cost per Mile w/Receiving State supplying fuel:	N/A	
Transport Cost per Mile w/Sending State Supplying Fuel:	N/A	
Minimum Daily Charge for Transport: NOTE: List Operator Cost in Personnel Section.	N/A	

**FLORIDA FOREST SERVICE
EQUIPMENT
2024 Rates**

Type:	Passenger Vehicles
Make:	Various (vans, mechanic truck, sedan, pickups)
Special Equipment: (LGP, Plow Type, Blade Type, With Foam, etc.)	N/A
Special Moving Requirements: (Oversized Load, etc.)	N/A
Rates: Per Hour of Use w/Receiving State Supplying Fuel:	N/A
Per Hour of Use w/Sending State Supplying Fuel:	\$17.00/hr.
Per Mile w/Receiving State Supplying Fuel:	N/A
Per Mile w/Sending State Supplying Fuel:	N/A
Minimum Daily Charge Equipment:	Equipment is charged for the operational period except when in travel status to and from the receiving state, and then is based on the hours of actual travel time.
Transport Cost per Mile w/Receiving State supplying fuel:	N/A
Transport Cost per Mile w/Sending State Supplying Fuel:	N/A
Minimum Daily Charge for Transport: NOTE: List Operator Cost in Personnel Section.	N/A

**FLORIDA FOREST SERVICE
EQUIPMENT
2024 Rates**

Type:	Command Trailers								
Make:	Various								
Special Equipment: (LGP, Plow Type, Blade Type, With Foam, etc.)	Auxiliary Power – Generator Set Type 1 – 53` - Type 2- varies 30`-35`, Type 3 - <30`								
Special Moving Requirements: (Oversized Load, etc.)	Heavy Duty Vehicle required for towing.								
Rates:	N/A								
Per Hour of Use w/Receiving State Supplying Fuel:	N/A								
Per Hour of Use w/Sending State Supplying Fuel:	<table border="1"> <tr> <th>Type 1</th> <th>Type 2</th> <th>Type 3</th> </tr> <tr> <td>\$800 daily</td> <td>\$550 daily</td> <td>\$330.00 daily</td> </tr> </table>	Type 1	Type 2	Type 3	\$800 daily	\$550 daily	\$330.00 daily		
Type 1	Type 2	Type 3							
\$800 daily	\$550 daily	\$330.00 daily							
Per Mile w/Receiving State Supplying Fuel:	N/A								
Per Mile w/Sending State Supplying Fuel:	N/A								
Minimum Daily Charge Equipment:	See above rates.								
Transport Cost per Mile w/Receiving State supplying fuel:	N/A								
Transport Cost per Mile w/Sending State Supplying Fuel:	N/A								
Minimum Daily Charge for Transport: NOTE: List Operator Cost in Personnel Section.	The cost of the transport is included with the daily rate.								

**FLORIDA FOREST SERVICE
EQUIPMENT
2024 Rates**

Type:	Mowers (2 operators)		
Make:	Various		
Special Equipment: (LGP, Plow Type, Blade Type, With Foam, etc.)	N/A		
Special Moving Requirements: (Oversized Load, etc.)	Requires hauling unit for road transport.		
Rates: Per Hour of Use w/Receiving State Supplying Fuel:	N/A		
Per Hour of Use w/Sending State Supplying Fuel:	Gryo-Track	Cutting	Posi-Track/ J
	width > 72"		Cutting width
	\$143.00/hr.		\$88.00/hr.
Per Mile w/Receiving State Supplying Fuel:	N/A		
Per Mile w/Sending State Supplying Fuel:	N/A		
Minimum Daily Charge Equipment:	Equipment is charged for the operational period except when in travel status to and from the receiving state, and then it is based on the hours of actual travel time.		
Transport Cost per Mile w/Receiving State supplying fuel:	N/A		
Transport Cost per Mile w/Sending State Supplying Fuel:	N/A		
Minimum Daily Charge for Transport: NOTE: List Operator Cost in Personnel Section.	See transport rate.		

**FLORIDA FOREST SERVICE
EQUIPMENT
2024 Rates**

Type:		Portable Pumps
Make:		Various
Special Equipment: (LGP, Plow Type, Blade Type, With Foam, etc.)		Hose and appliances included.
Special Moving Requirements: (Oversized Load, etc.)		Requires vehicle to transport unit to site.
Rates: Per Hour of Use w/Receiving State Supplying Fuel:		N/A
Per Hour of Use w/Sending State Supplying Fuel:		\$20.00/hr.
Per Mile w/Receiving State Supplying Fuel:		N/A
Per Mile w/Sending State Supplying Fuel:		\$143.00
Minimum Daily Charge Equipment:		N/A
Transport Cost per Mile w/Receiving State supplying fuel:		
Transport Cost per Mile w/Sending State Supplying Fuel:		N/A
Minimum Daily Charge for Transport: NOTE: List Operator Cost in Personnel Section.		N/A

**FLORIDA FOREST SERVICE
EQUIPMENT
2024 Rates**

Type:	Tents
Make:	Various
Special Equipment: (LGP, Plow Type, Blade Type, With Foam, etc.)	Incident Tents includes generator.
Special Moving Requirements: (Oversized Load, etc.)	Requires vehicle to transport unit to site.
Rate: Daily	\$200 Daily

**FLORIDA FOREST SERVICE
AIRCRAFT
2024 Rates**

Type:	Patrol Aircraft (1 pilot)
Make:	Piper, Cessna
Model:	Archer II, 182
Special Equipment:	GPS/Air Attack Communication
Passenger Capacity (exclude pilot):	3
Load Capacity or Retardant Gallons:	N/A
ate: Per Hour of Use w/Receiving State Supplying Fuel:	
Per Hour of Use w/Sending State Supplying Fuel:	\$110.00/hr.
Minimum Daily Charge: NOTE: List Operator Cost in Personnel Section.	Four hours of flight time

**FLORIDA FOREST SERVICE
AIRCRAFT
2024 Rates**

Type:	Light Twin (2 pilots)
Make:	Piper
Model:	Navajo
Special Equipment:	GPS/Air Attack Communication
Passenger Capacity (exclude pilot):	5
Load Capacity or Retardant Gallons:	N/A
Rate: Per Hour of Use w/Receiving State Supplying Fuel:	
Per Hour of Use w/Sending State Supplying Fuel:	\$605/hr.
Minimum Daily Charge: NOTE: List Operator Cost in Personnel Section.	Three hours of flight time.

**FLORIDA FOREST SERVICE
AIRCRAFT
2024 Rates**

Type:	Helicopter Type 2 (1 Pilot)
Make:	Bell
Model:	UHI (Super Huey), 209
Special Equipment:	Bambi Bucket
Passenger Capacity (exclude pilot):	None
Load Capacity or Retardant Gallons:	300 gallons
Rate: Per Hour of Use w/Receiving State Supplying Fuel:	
Per Hour of Use w/Sending State Supplying Fuel:	\$900.00/hr. (plus actual fuel cost)*
Helicopter Tender (Helicopter support vehicle, mechanic & fuel trailer)	\$57.00/hr.
Helicopter tender is required when helicopter is dispatched.	
Minimum Daily Charge: NOTE: List Operator Cost in Personnel Section.	Helicopter – three hours of flight time Tender – three hours

**FLORIDA FOREST SERVICE
AIRCRAFT
2024 Rates**

Type:	Helicopter Type 3 (1 Pilot)
Make:	Leonardo
Model:	AW119Kx
Special Equipment:	Bambi Bucket
Passenger Capacity (exclude pilot):	None
Load Capacity or Retardant Gallons:	180 gallons
Rate: Per Hour of Use w/Receiving State Supplying Fuel:	
Per Hour of Use w/Sending State Supplying Fuel:	\$875.00/hr. (plus actual fuel cost)
Helicopter Tender (Helicopter support vehicle & fuel trailer)	\$57.00/hr.
Helicopter tender is required when helicopter is dispatched.	
Minimum Daily Charge: NOTE: List Operator Cost in Personnel Section.	Helicopter – three hours of flight time Tender – three hours

**FLORIDA FOREST SERVICE
AIRCRAFT
2024 Rates**

Type:	Helicopter Type 3 (1 Pilot)
Make:	Bell
Model:	OH-58
Special Equipment:	Bambi Bucket
Passenger Capacity (exclude pilot):	None
Load Capacity or Retardant Gallons:	100 gallons
Rate: Per Hour of Use w/Receiving State Supplying Fuel:	<p>\$350.00/hr. (plus actual fuel cost)*</p> <p>\$57.00/hr.</p> <p>Helicopter tender is required when helicopter is dispatched.</p> <p>Helicopter – three hours of flight time Tender – three hours</p>
Per Hour of Use w/Sending State Supplying Fuel:	
Helicopter Tender (Helicopter support vehicle, mechanic & fuel trailer)	
Minimum Daily Charge: NOTE: List Operator Cost in Personnel Section.	

**FLORIDA FOREST SERVICE
PERSONNEL
2024 Rates**

NOTE: All Compact Personnel are guaranteed a minimum of eight hours per day

Qualifications:	(4) ICS Team Type 1, various qualified ICS positions
Standard Rate of Pay:	* Salary and Benefits – Varies by individual
Overtime Rate:	Varies by Individual
Per Diem Rate, if Food and Lodging are not Provided:	State of Florida per/diem and meals rate per statute.

**GEORGIA FORESTRY COMMISSION
EQUIPMENT
2024 Rates**

NOTE: Receiving Units are responsible for repairing damaged equipment and, sending States are responsible for routine maintenance

Type:	Type I Tractor Plow
Make:	JD1050J
Special Equipment: (LGP, Plow Type, Blade Type, With Foam, etc.)	Winch, KG blade, wheeled fire plow, straight blade
Special Moving Requirements: (Oversized Load, etc.)	Oversize Load – Requires escort and permitting for out of state travel
Rates:	
Per Hour of Use w/Receiving State Supplying Fuel:	\$260 per hr. – less actual fuel cost
Per Hour of Use w/Sending State Supplying Fuel:	\$260 per hr.
Per Mile w/Receiving State Supplying Fuel:	N/A
Per Mile w/Sending State Supplying Fuel:	N/A
Minimum Daily Charge Equipment:	4 Hr. daily
Transport Cost per Mile w/Receiving State supplying fuel:	See Transport
Transport Cost per Mile w/Sending State Supplying Fuel:	See Transport
Minimum Daily Charge for Transport: NOTE: List Operator Cost in Personnel Section.	N/A

**GEORGIA FORESTRY COMMISSION
EQUIPMENT
2024 Rates**

Type:	Type II Tractor Plow
Make:	JD850; CAT D6N; CAT D7; Dresser TD-15
Special Equipment: (LGP, Plow Type, Blade Type, With Foam, etc.)	Fire Plow (wheeled type), Winch – V-blade and straight blade
Special Moving Requirements: (Oversized Load, etc.)	None
Rates: Per Hour of Use w/Receiving State Supplying Fuel:	\$205 per hr. – less actual fuel cost
Per Hour of Use w/Sending State Supplying Fuel:	\$205 per hr.
Per Mile w/Receiving State Supplying Fuel:	N/A
Per Mile w/Sending State Supplying Fuel:	N/A
Minimum Daily Charge Equipment:	4 Hr. daily
Transport Cost per Mile w/Receiving State supplying fuel:	See Transport
Transport Cost per Mile w/Sending State Supplying Fuel:	See Transport
Minimum Daily Charge for Transport: NOTE: List Operator Cost in Personnel Section.	N/A

**GEORGIA FORESTRY COMMISSION
EQUIPMENT
2024 Rates**

Type:	Type III Tractor Plow
Make:	JD700; JD750; CAT D4E; CAT D4H; CAT D5K; CAT D5N, CAT D6K; CASE 1150
Special Equipment: (LGP, Plow Type, Blade Type, With Foam, etc.)	Fire Plow (wheeled type), Winch Straight or V-blade
Special Moving Requirements: (Oversized Load, etc.)	None
Rates:	
Per Hour of Use w/Receiving State Supplying Fuel:	\$180 per hr. – less actual fuel cost
Per Hour of Use w/Sending State Supplying Fuel:	\$180 per hr.
Per Mile w/Receiving State Supplying Fuel:	N/A
Per Mile w/Sending State Supplying Fuel:	N/A
Minimum Daily Charge Equipment:	4 Hr. daily
Transport Cost per Mile w/Receiving State supplying fuel:	See Transport
Transport Cost per Mile w/Sending State Supplying Fuel:	See Transport
Minimum Daily Charge for Transport: NOTE: List Operator Cost in Personnel Section.	N/A

**GEORGIA FORESTRY COMMISSION
EQUIPMENT
2024 Rates**

Type:	Type IV Tractor Plow
Make:	JD400; JD450; JD650; CAT D3C; CAT D4C; Case 750; Case 850; Dresser TD8
Special Equipment: (LGP, Plow Type, Blade Type, With Foam, etc.)	Fire Plow (lift or wheeled type), Winch, straight blade, or V-blade
Special Moving Requirements: (Oversized Load, etc.)	None
Rates:	
Per Hour of Use w/Receiving State Supplying Fuel:	\$150 per hr. – less actual fuel cost
Per Hour of Use w/Sending State Supplying Fuel:	\$150 per hr.
Per Mile w/Receiving State Supplying Fuel:	N/A
Per Mile w/Sending State Supplying Fuel:	N/A
Minimum Daily Charge Equipment:	4 Hr. daily
Transport Cost per Mile w/Receiving State supplying fuel:	See Transport
Transport Cost per Mile w/Sending State Supplying Fuel:	See Transport
Minimum Daily Charge for Transport: NOTE: List Operator Cost in Personnel Section.	

**GEORGIA FORESTRY COMMISSION
EQUIPMENT
2024 Rates**

Type:	Transport (double-axle drive on bed)
Make:	Any
Special Equipment: (LGP, Plow Type, Blade Type, With Foam, etc.)	None
Special Moving Requirements: (Oversized Load, etc.)	None
Rates:	
Per Hour of Use w/Receiving State Supplying Fuel:	N/A
Per Hour of Use w/Sending State Supplying Fuel:	N/A
Per Mile w/Receiving State Supplying Fuel:	\$2.00 per Mile – less actual fuel cost
Per Mile w/Sending State Supplying Fuel:	\$2.25 per Mile
Minimum Daily Charge Equipment:	N/A
Transport Cost per Mile w/Receiving State supplying fuel:	N/A
Transport Cost per Mile w/Sending State Supplying Fuel:	N/A N/A
Minimum Daily Charge for Transport: NOTE: List Operator Cost in Personnel Section.	

**GEORGIA FORESTRY COMMISSION
EQUIPMENT
2024 Rates**

Type:	Truck Tractor
Make:	Any
Special Equipment: (LGP, Plow Type, Blade Type, With Foam, etc.)	None
Special Moving Requirements: (Oversized Load, etc.)	May require Permit
Rates:	
Per Hour of Use w/Receiving State Supplying Fuel:	N/A
Per Hour of Use w/Sending State Supplying Fuel:	N/A
Per Mile w/Receiving State Supplying Fuel:	\$2.50 per Mile – less actual fuel cost
Per Mile w/Sending State Supplying Fuel:	\$2.75 per Mile
Minimum Daily Charge Equipment:	N/A
Transport Cost per Mile w/Receiving State supplying fuel:	N/A
Transport Cost per Mile w/Sending State Supplying Fuel:	N/A
Minimum Daily Charge for Transport: NOTE: List Operator Cost in Personnel Section.	N/A

**GEORGIA FOESTRY COMMISSION
EQUIPMENT
2024 Rates**

Type:	Engine Type VI or VII (4x4)
Make:	Any
Special Equipment: (LGP, Plow Type, Blade Type, With Foam, etc.)	Pump-tank 150-300 gallons, Foam, Winch, 2-man crew (ENGB + ENOP)
Special Moving Requirements: (Oversized Load, etc.)	None
Rates:	
Per Hour of Use w/Receiving State Supplying Fuel:	\$75 per Hour of pump use – less actual fuel cost
Per Hour of Use w/Sending State Supplying Fuel:	\$75 per Hour of pump use
Per Mile w/Receiving State Supplying Fuel:	\$.80 per Mile – less actual fuel cost
Per Mile w/Sending State Supplying Fuel:	\$.90 per Mile
Minimum Daily Charge Equipment:	4 Hr. daily
Transport Cost per Mile w/Receiving State supplying fuel:	N/A
Transport Cost per Mile w/Sending State Supplying Fuel:	N/A
Minimum Daily Charge for Transport: NOTE: List Operator Cost in Personnel Section.	

**GEORGIA FORESTRY COMMISSION
EQUIPMENT
2024 Rates**

Type:	Pickup (4800-5900 GVWR)
Make:	Any
Special Equipment: (LGP, Plow Type, Blade Type, With Foam, etc.)	None (Pump & Water available but not used) Transportation only
Special Moving Requirements: (Oversized Load, etc.)	None
Rates:	
Per Hour of Use w/Receiving State Supplying Fuel:	N/A
Per Hour of Use w/Sending State Supplying Fuel:	N/A
Per Mile w/Receiving State Supplying Fuel:	\$.75 per Mile – less actual fuel cost
Per Mile w/Sending State Supplying Fuel:	\$.85 per Mile N/A
Minimum Daily Charge Equipment:	N/A
Transport Cost per Mile w/Receiving State supplying fuel:	N/A
Transport Cost per Mile w/Sending State Supplying Fuel:	N/A
Minimum Daily Charge for Transport: NOTE: List Operator Cost in Personnel Section.	N/A

**GEORGIA FORESTRY COMMISSION
EQUIPMENT
2024 Rates**

Type:	Sedan (full, compact), Station Wagon, Pickup (compact/mid-size), Van (5-9 pass)
Make:	Any
Special Equipment: (LGP, Plow Type, Blade Type, With Foam, etc.)	None
Special Moving Requirements: (Oversized Load, etc.)	None
Rates:	
Per Hour of Use w/Receiving State Supplying Fuel:	N/A
Per Hour of Use w/Sending State Supplying Fuel:	N/A
Per Mile w/Receiving State Supplying Fuel:	\$.60 per Mile – less actual fuel cost.
Per Mile w/Sending State Supplying Fuel:	\$.70 per Mile
Minimum Daily Charge Equipment:	N/A
Transport Cost per Mile w/Receiving State supplying fuel:	N/A
Transport Cost per Mile w/Sending State Supplying Fuel:	N/A
Minimum Daily Charge for Transport: NOTE: List Operator Cost in Personnel Section.	N/A

**GEORGIA FORESTRY COMMISSION
EQUIPMENT
2024 Rates**

Type:	Van (15 pass)
Make:	Any
Special Equipment: (LGP, Plow Type, Blade Type, With Foam, etc.)	None
Special Moving Requirements: (Oversized Load, etc.)	None
Rates:	
Per Hour of Use w/Receiving State Supplying Fuel:	N/A
Per Hour of Use w/Sending State Supplying Fuel:	N/A
Per Mile w/Receiving State Supplying Fuel:	\$.75 per Mile – less actual fuel cost
Per Mile w/Sending State Supplying Fuel:	\$.85 per Mile
Minimum Daily Charge Equipment:	\$100 per day
Transport Cost per Mile w/Receiving State supplying fuel:	N/A
Transport Cost per Mile w/Sending State Supplying Fuel:	N/A
Minimum Daily Charge for Transport: NOTE: List Operator Cost in Personnel Section.	N/A

**GEORGIA FORESTRY COMMISSION
EQUIPMENT
2024 Rates**

Type:	Maintenance Truck (aircraft)
Make:	Ford F-350
Special Equipment: (LGP, Plow Type, Blade Type, With Foam, etc.)	600 Gallon Fuel trailer, maintenance person
Special Moving Requirements: (Oversized Load, etc.)	None
Rates:	
Per Hour of Use w/Receiving State Supplying Fuel:	\$150 per hour
Per Hour of Use w/Sending State Supplying Fuel:	\$150 per hour
Per Mile w/Receiving State Supplying Fuel:	
Per Mile w/Sending State Supplying Fuel:	\$600 per Day
Minimum Daily Charge Equipment:	N/A
Transport Cost per Mile w/Receiving State supplying fuel:	
Transport Cost per Mile w/Sending State Supplying Fuel:	N/A
Minimum Daily Charge for Transport: NOTE: List Operator Cost in Personnel Section.	

**GEORGIA FORESTRY COMMISSION
EQUIPMENT
2024 Rates**

Type:	Forklift
Make:	18,000 to 50,000 lbs.
Special Equipment: (LGP, Plow Type, Blade Type, With Foam, etc.)	Operator
Special Moving Requirements: (Oversized Load, etc.)	None
Rates:	
Per Hour of Use w/Receiving State Supplying Fuel:	\$40 per Hr. – less actual fuel cost
Per Hour of Use w/Sending State Supplying Fuel:	\$50 per Hr.
Per Mile w/Receiving State Supplying Fuel:	N/A
Per Mile w/Sending State Supplying Fuel:	N/A
Minimum Daily Charge Equipment:	N/A
Transport Cost per Mile w/Receiving State supplying fuel:	See Truck Tractor
Transport Cost per Mile w/Sending State Supplying Fuel:	See Truck Tractor
Minimum Daily Charge for Transport: NOTE: List Operator Cost in Personnel Section.	N/A

**GEORGIA FORESTRY COMMISSION
EQUIPMENT
2024Rates**

Type:	Forklift
Make:	18,000 Max
Special Equipment: (LGP, Plow Type, Blade Type, With Foam, etc.)	Operator
Special Moving Requirements: (Oversized Load, etc.)	None
Rates:	
Per Hour of Use w/Receiving State Supplying Fuel:	\$25 per Hr. – less actual fuel cost
Per Hour of Use w/Sending State Supplying Fuel:	\$35 per Hr.
Per Mile w/Receiving State Supplying Fuel:	N/A
Per Mile w/Sending State Supplying Fuel:	N/A
Minimum Daily Charge Equipment:	N/A
Transport Cost per Mile w/Receiving State supplying fuel:	See Transport
Transport Cost per Mile w/Sending State Supplying Fuel:	See Transport
Minimum Daily Charge for Transport: NOTE: List Operator Cost in Personnel Section.	N/A

**GEORGIA FORESTRY COMMISSION
EQUIPMENT
2024 Rates**

Type:	Logistics Support Trailer
Make:	
Special Equipment: (LGP, Plow Type, Blade Type, With Foam, etc.)	22 ft. – 30 ft. Travel Trailer
Special Moving Requirements: (Oversized Load, etc.)	None
Rates:	
Per Hour of Use w/Receiving State Supplying Fuel:	N/A
Per Hour of Use w/Sending State Supplying Fuel:	N/A
Per Mile w/Receiving State Supplying Fuel:	N/A
Per Mile w/Sending State Supplying Fuel:	N/A
Minimum Daily Charge Equipment:	\$250 per Day
Transport Cost per Mile w/Receiving State supplying fuel:	See Maintenance Truck
Transport Cost per Mile w/Sending State Supplying Fuel:	See Maintenance Truck
Minimum Daily Charge for Transport: NOTE: List Operator Cost in Personnel Section.	N/A

**GEORGIA FORESTRY COMMISSION
EQUIPMENT
2024 Rates**

Type:	Mobile Command Trailer
Make:	IDS
Special Equipment: (LGP, Plow Type, Blade Type, With Foam, etc.)	Breakaway Generator
Special Moving Requirements: (Oversized Load, etc.)	Truck Tractor
Rates:	
Per Hour of Use w/Receiving State Supplying Fuel:	N/A
Per Hour of Use w/Sending State Supplying Fuel:	N/A
Per Mile w/Receiving State Supplying Fuel:	N/A
Per Mile w/Sending State Supplying Fuel:	N/A
Minimum Daily Charge Equipment:	\$800 per day
Transport Cost per Mile w/Receiving State supplying fuel:	See Truck Tractor
Transport Cost per Mile w/Sending State Supplying Fuel:	See Truck Tractor
Minimum Daily Charge for Transport: NOTE: List Operator Cost in Personnel Section.	N/A

**GEORGIA FORESTRY COMMISSION
EQUIPMENT
2024 Rates**

Type:	Portable Pump
Make:	Mark III
Special Equipment: (LGP, Plow Type, Blade Type, With Foam, etc.)	
Special Moving Requirements: (Oversized Load, etc.)	None
Rates:	
Per Hour of Use w/Receiving State Supplying Fuel:	\$10 per Hour of pump use – less actual fuel cost
Per Hour of Use w/Sending State Supplying Fuel:	\$10 per Hour of pump use
Per Mile w/Receiving State Supplying Fuel:	N/A
Per Mile w/Sending State Supplying Fuel:	N/A
Minimum Daily Charge Equipment:	\$35 per Day
Transport Cost per Mile w/Receiving State supplying fuel:	N/A
Transport Cost per Mile w/Sending State Supplying Fuel:	N/A
Minimum Daily Charge for Transport: NOTE: List Operator Cost in Personnel Section.	N/A

**GEORGIA FORESTRY COMMISSION
EQUIPMENT
2024 Rates**

Type:	Portable Pump
Make:	6" irrigation
Special Equipment: (LGP, Plow Type, Blade Type, With Foam, etc.)	
Special Moving Requirements: (Oversized Load, etc.)	None
Rates:	
Per Hour of Use w/Receiving State Supplying Fuel:	\$40 per Hour of pump use – less actual fuel cost
Per Hour of Use w/Sending State Supplying Fuel:	\$50 per Hour of pump use
Per Mile w/Receiving State Supplying Fuel:	N/A
Per Mile w/Sending State Supplying Fuel:	N/A
Minimum Daily Charge Equipment:	\$350 per Day
Transport Cost per Mile w/Receiving State supplying fuel:	See Pickup (4800-5900 GVWR)
Transport Cost per Mile w/Sending State Supplying Fuel:	N/A
Minimum Daily Charge for Transport: NOTE: List Operator Cost in Personnel Section.	

**GEORGIA FORESTRY COMMISSION
EQUIPMENT
2024 Rates**

Type:	Portable Retardant Mixing Tank (500gals)
Make:	Various Makes and Models
Special Equipment: (LGP, Plow Type, Blade Type, With Foam, etc.)	Requires approved retardant and water supply. All fill hoses provided by sending state.
Special Moving Requirements: (Oversized Load, etc.)	Requires minimum of ¾ ton pick to transport.
Rates: Per Hour of Use w/Receiving State Supplying Fuel: Per Hour of Use w/Sending State Supplying Fuel: Per Mile w/Receiving State Supplying Fuel: Per Mile w/Sending State Supplying Fuel: Minimum Daily Charge Equipment: Transport Cost per Mile w/Receiving State supplying fuel: Transport Cost per Mile w/Sending State Supplying Fuel: Minimum Daily Charge for Transport:	\$250 per day or partial day Receiving state responsible to provide approved retardant and on-site water supply. \$250 per day minimum Rates above do not include personnel/operator cost nor tow vehicle. See personnel section for operator cost and vehicle section for transportation cost.

**GEORGIA FORESTRY COMMISSION
EQUIPMENT**

2024 Rates

NOTE: Receiving Units are responsible for repairing damaged equipment and, sending States are responsible for routine maintenance

Type:	ATV/UTV
Make:	Various Make and Models
Special Equipment: (LGP, Plow Type, Blade Type, With Foam, etc.)	Burn fuel tank and water tank with supporting apparatus available.
Special Moving Requirements: (Oversized Load, etc.)	Requires utility trailer for transport
Rates: Per Hour of Use w/Receiving State Supplying Fuel: Per Hour of Use w/Sending State Supplying Fuel: Per Mile w/Receiving State Supplying Fuel: Per Mile w/Sending State Supplying Fuel: Minimum Daily Charge Equipment: Transport Cost per Mile w/Receiving State supplying fuel: Transport Cost per Mile w/Sending State Supplying Fuel: Minimum Daily Charge for Transport: NOTE: List Operator Cost in Personnel Section.	\$25 per hour of actual operating time based on make and model. 4 hours per day minimum. ATV/UTV charged the greater of the following: 1. Actual hours used. OR 2. Minimum rate per day. Rates above do not include personnel/operator cost. See personnel section for operator cost.

**GEORGIA FORESTRY COMMISSION
EQUIPMENT
2024Rates**

NOTE: Receiving Units are responsible for repairing damaged equipment and, sending States are responsible for routine maintenance

Type:	Chainsaw
Make:	Various Makes and Models
Special Equipment: (LGP, Plow Type, Blade Type, With Foam, etc.)	
Special Moving Requirements: (Oversized Load, etc.)	
Rates: Per Hour of Use w/Receiving State Supplying Fuel:	<p>\$1.50 to \$3.45 per hour of actual operating time based on chainsaw bar length.</p> <p>4 hours per day minimum. Chainsaw use will be charged the greater of the following:</p> <ol style="list-style-type: none"> 2. Actual hours used. OR 2. Minimum rate per day. <p>Rates above do not include personnel/operator cost. See personnel section for operator cost.</p>
Per Hour of Use w/Sending State Supplying Fuel:	
Per Mile w/Receiving State Supplying Fuel:	
Per Mile w/Sending State Supplying Fuel:	
Minimum Daily Charge Equipment:	
Transport Cost per Mile w/Receiving State supplying fuel:	
Transport Cost per Mile w/Sending State Supplying Fuel:	
Minimum Daily Charge for Transport:	
NOTE: List Operator Cost in Personnel Section.	

**GEORGIA FORESTRY COMMISSION
EQUIPMENT
2024 Rates**

Type:	General Purpose Tents
Make:	
Special Equipment: (LGP, Plow Type, Blade Type, With Foam, etc.)	12 x 12 Canopy 19 X 35 ICS Command Shelter – Requires set up crew (3 person)
Special Moving Requirements: (Oversized Load, etc.)	None
Rates:	
Per Hour of Use w/Receiving State Supplying Fuel:	N/A
Per Hour of Use w/Sending State Supplying Fuel:	N/A
Per Mile w/Receiving State Supplying Fuel:	N/A
Per Mile w/Sending State Supplying Fuel:	N/A
Minimum Daily Charge Equipment:	\$50 per Day (Canopy)/ \$150 per Day (Command Shelter)
Transport Cost per Mile w/Receiving State supplying fuel:	See Pickup (4800-5900 GVWR)
Transport Cost per Mile w/Sending State Supplying Fuel:	See Pickup (4800-5900 GVWR)
Minimum Daily Charge for Transport: NOTE: List Operator Cost in Personnel Section.	N/A

**GEORGIA FORESTRY COMMISSION
AIRCRAFT
2024 Rates**

Type:	Helicopter
Make:	Bell 407
Model:	
Special Equipment:	W/ Water Bucket
Passenger Capacity (exclude pilot):	5
Load Capacity or Retardant Gallons:	210 Gallons
Rate: Per Hour of Use w/Receiving State Supplying Fuel:	\$1,250 per hr.
Per Hour of Use w/Sending State Supplying Fuel:	\$600 per hr. + Actual Fuel Cost
Minimum Daily Charge: NOTE: List Operator Cost in Personnel Section:	4 Hr. Minimum

**GEORGIA FORESTRY COMMISSION
AIRCRAFT
2024 Rates**

Type:	Airplane
Make:	Cessna 182
Model:	
Special Equipment:	
Passenger Capacity (exclude pilot):	3
Load Capacity or Retardant Gallons:	
Rate: Per Hour of Use w/Receiving State Supplying Fuel:	\$250 per hr.
Per Hour of Use w/Sending State Supplying Fuel:	\$250 per hr. + Actual Fuel Cost
Minimum Daily Charge: NOTE: List Operator Cost in Personnel Section:	4 Hr. Minimum

**GEORGIA FORESTRY COMMISSION
AIRCRAFT
2024 Rates**

Type:	Single Engine Air Tanker (SEAT)
Make:	Thrush
Model:	510G Switchback
Special Equipment:	
Passenger Capacity (exclude pilot):	0
Load Capacity or Retardant Gallons:	500 gallons
Rate:	
Per Hour of Use w/Receiving State Supplying Fuel:	\$650 per hr. actual flight time
Per Hour of Use w/Sending State Supplying Fuel:	\$650 per hr. plus actual fuel cost
Minimum Daily Charge:	4 hours per day minimum. Aircraft will be charged the greater of the following:
NOTE: List Operator Cost in Personnel Section:	1. Actual hours used. OR 2. Minimum rate per day.

**GEORGIA FORESTRY COMMISSION
PERSONNEL
2024 Rates**

**NOTE: All Compact Personnel are guaranteed a Minimum of Eight Hours
per Day**

Qualifications:	NWCG Qualified ICS position
Standard Rate of Pay:	Employee salary Rate
Overtime Rate:	1.5 times pay over 40 hrs. a week
Per Diem Rate, if Food and Lodging are not Provided:	Federal per diem rate for locality

**GEORGIA FORESTRY COMMISSION
PERSONNEL**

2024 Rates

NOTE: All Compact Personnel are guaranteed a Minimum of Eight Hours per Day

Qualifications:	Transportation Drivers, Mechanics, non-ICS positions, Fixed-wing and Rotor-wing Pilots
Standard Rate of Pay:	Employee salary Rate
Overtime Rate:	1.5 times pay over 40 hrs. a week
Per Diem Rate, if Food and Lodging are not Provided:	Federal per diem rate for locality

**GEORGIA FORESTRY COMMISSION
PERSONNEL**

2024 Rates

NOTE: All Compact Personnel are guaranteed a Minimum of Eight Hours per Day

Qualifications:	Georgia State Qualified: Equipment Operator, Engine Crew, Hand Crew, and Pilots
Standard Rate of Pay:	Employee salary Rate
Overtime Rate:	1.5 times pay over 40 hrs. a week
Per Diem Rate, if Food and Lodging are not Provided:	Federal per diem rate for locality

**KENTUCKY DIVISION OF FORESTRY
EQUIPMENT
2024 Rates**

NOTE: Receiving Units are responsible for repairing damaged equipment and, sending States are responsible for routine maintenance

Heavy Equipment	Per Hour Use	Mileage Rate	Guarantee Day Rate
Type 3 Dozer (JD650)	\$105	*See Transport Rate	\$525
Type 4 Dozer (JD550)	\$90	*See Transport Rate	\$450
Type 4 Tractor Plow (JD650/JD550)	\$105	*See Transport Rate	\$525
Straight Transport Truck	N/A	\$2.50	\$110
Engine Type 6	\$50	\$1.00	\$400

Heavy Equipment will be billed accordingly:

Whichever is greater:

Heavy Equipment will be charged per hour the assigned operator works.

Or Heavy Equipment will be charged the operational period.

Or Heavy Equipment will be charged the Guarantee Daily Rate.

The exception is when in travel status to and from the receiving state, and then is based on the hours of actual travel time.

Support Equipment	Per Hour Use	Mileage Rate	Guarantee Day Rate
Sedan or SUV	N/A	\$1	\$85
Pickup, ½ - ¾ ton	N/A	\$1	\$85
Pickup, 1 ton	N/A	\$1	\$85
Passenger Van	N/A	\$1	\$85
UTV	\$10	N/A	\$85
Utility Trailer	N/A	\$.50	\$65
Box Truck	\$42	\$2.50	\$336

Support Equipment will be billed accordingly:

- Daily mileage use will be charged according to the Mileage Rates above.
- Guarantee Daily Rate will be charged according to the rates above.

ALL KDF Equipment will be provided and billed accordingly:

- All Equipment will come wet, with KDF providing fuel.
- If the incident provides fuel, the fuel tickets will be collected, attached, and deducted from the final bill.
- Any Class A foam used will be provided by the receiving unit (Incident)
- Travel Status is based upon actual travel time at a Per Hour Use and Mileage Rates listed above.
- Claims for damages and loss, which occur at the incident, will be documented with the incident at the time they occur or prior to demobilization. All Equipment damaged in the firefighting effort is the responsibility of the receiving unit.
- The sending state will be responsible for routine maintenance on all KDF equipment.
- All Equipment will meet NWCG minimum standards and typing.
- The receiving unit is responsible for any shipping costs involving Equipment and supplies.
- Equipment time and mileage will be recorded on Equipment Shift Tickets according to the NWCG Standards for Interagency Incident Business Management and submitted to finance to generate the OF-286, Emergency Equipment – Use Invoice.

**KENTUCKY DIVISION OF FORESTRY
PERSONNEL**

2024 Rates

NOTE: All Compact Personnel are guaranteed a Minimum of Eight Hours per Day

- Personnel time will be recorded on Crew Time Reports according to the NWCG Standards for Interagency Incident Business Management and submitted to finance to generate the OF-288 Incident Time Report.
- Overtime and Per Diem Rates are the actual cost of each person’s salary & benefits as well as \$36/day (unless a high area) + Actual Lodging costs.

**LOUISIANA DEPARTMENT OF FORESTRY
EQUIPMENT
2024 Rates**

NOTE: Receiving Units are responsible for repairing damaged equipment and, sending States are responsible for routine maintenance

Type:	Tractor Plow Unit / Dozer
Make:	John Deere 750 LGP (environmental cab)
Special Equipment: (LGP, Plow Type, Blade Type, With Foam, etc.)	Lift Type Fesco Plow, straight blade with six-way movement and rear mounted winch. Two-way programmable radio
Special Moving Requirements: (Oversized Load, etc.)	Semi-Tractor Truck and Trailer "Oversized Load"
Rates: Per Hour of Use w/Receiving State Supplying Fuel:	\$100/hour
Per Hour of Use w/Sending State Supplying Fuel:	\$100/hour + fuel costs
Per Mile w/Receiving State Supplying Fuel:	N/A
Per Mile w/Sending State Supplying Fuel:	
Minimum Daily Charge Equipment:	Five Hours Per Day (Dozer only)
Transport Cost per Mile w/Receiving State supplying fuel:	Semi-Tractor Truck and Trailer Required @ \$3.00/mile.
Transport Cost per Mile w/Sending State Supplying Fuel:	\$3.00/mile + fuel
Minimum Daily Charge for Transport: NOTE: List Operator Cost in Personnel Section.	N/A with Dozer attached

**LOUISIANA DEPARTMENT OF FORESTRY
EQUIPMENT
2024 Rates**

Type:	Tractor Plow Unit / Dozer
Make:	JohnDeere650J-LGP/650H-LGP (environmental cab)
Special Equipment: (LGP, Plow Type, Blade Type, With Foam, etc.)	Lift Type Plow with V-blade or straight blade with six-way movement (winch available upon request) Two-way programmable radio
Special Moving Requirements: (Oversized Load, etc.)	Mack GU813 transport required, “Oversized Load”
Rates:	
Per Hour of Use w/Receiving State Supplying Fuel:	\$90/hour
Per Hour of Use w/Sending State Supplying Fuel:	\$90/hr. + fuel
Per Mile w/Receiving State Supplying Fuel:	N/A
Per Mile w/Sending State Supplying Fuel:	N/A
Minimum Daily Charge Equipment:	Five Hours Per Day (Dozer only)
Transport Cost per Mile w/Receiving State supplying fuel:	Truck (Mack GU813) Required @ \$2.50/mile.
Transport Cost per Mile w/Sending State Supplying Fuel:	\$2.50/mile + fuel
Minimum Daily Charge for Transport:	N/A with Dozer attached.
NOTE: List Operator Cost in Personnel Section.	

**LOUISIANA DEPARTMENT OF FORESTRY
EQUIPMENT
2024 Rates**

Type:	Semi-Tractor Truck with Trailer
Make:	Various
Special Equipment: (LGP, Plow Type, Blade Type, With Foam, etc.)	Two-way programmable radio, hand tools
Special Moving Requirements: (Oversized Load, etc.)	
Rates:	
Per Hour of Use w/Receiving State Supplying Fuel:	N/A
Per Hour of Use w/Sending State Supplying Fuel:	N/A
Per Mile w/Receiving State Supplying Fuel:	\$3.00 per mile
Per Mile w/Sending State Supplying Fuel:	\$3.00/mile + fuel
Minimum Daily Charge Equipment:	Greater of \$300/day or total mileage cost
Transport Cost per Mile w/Receiving State supplying fuel:	\$3.00 per mile
Transport Cost per Mile w/Sending State Supplying Fuel:	Greater of \$300/day or total mileage cost
Minimum Daily Charge for Transport: NOTE: List Operator Cost in Personnel Section.	

**LOUISIANA DEPARTMENT OF FORESTRY
EQUIPMENT
2024 Rates**

Type:	Transport Diesel (Tandem Axle)
Make:	Mack GU813 (Transport Only)
Special Equipment: (LGP, Plow Type, Blade Type, With Foam, etc.)	Two-way programmable radio, hand tools
Special Moving Requirements: (Oversized Load, etc.)	
Rates:	
Per Hour of Use w/Receiving State Supplying Fuel:	N/A
Per Hour of Use w/Sending State Supplying Fuel:	N/A
Per Mile w/Receiving State Supplying Fuel:	\$2.50 per mile
Per Mile w/Sending State Supplying Fuel:	\$2.50/mile + fuel
Minimum Daily Charge Equipment:	
Transport Cost per Mile w/Receiving State supplying fuel:	Greater of \$250/day or total mileage cost
Transport Cost per Mile w/Sending State Supplying Fuel:	N/A
Minimum Daily Charge for Transport:	
NOTE: List Operator Cost in Personnel Section.	Greater of \$250/day or total mileage cost

**LOUISIANA DEPARTMENT OF FORESTRY
EQUIPMENT
2024 Rates**

Type:	Type V or VI Engines
Make:	GMC 5500 or Ford F-350
Special Equipment: (LGP, Plow Type, Blade Type, With Foam, etc.)	400 gal. tank or 200 gal. tank Two-way programmable radio
Special Moving Requirements: (Oversized Load, etc.)	
Rates: Per Hour of Use w/Receiving State Supplying Fuel:	\$40.00/hr. \$40.00/hr. + fuel
Per Hour of Use w/Sending State Supplying Fuel:	
Per Mile w/Receiving State Supplying Fuel:	
Per Mile w/Sending State Supplying Fuel:	Equipment is charged for the operational period.
Minimum Daily Charge Equipment:	
Transport Cost per Mile w/Receiving State supplying fuel:	
Transport Cost per Mile w/Sending State Supplying Fuel:	Equipment is charged for the operational period.
Minimum Daily Charge for Transport: NOTE: List Operator Cost in Personnel Section.	

**LOUISIANA DEPARTMENT OF FORESTRY
EQUIPMENT
2024 Rates**

Type:	Passenger Vehicles
Make:	Sedan; Pickup Truck; Sport Utility Vehicle; Van
Special Equipment: (LGP, Plow Type, Blade Type, With Foam, etc.)	
Special Moving Requirements: (Oversized Load, etc.)	
Rates:	
Per Hour of Use w/Receiving State Supplying Fuel:	N/A
Per Hour of Use w/Sending State Supplying Fuel:	N/A
Per Mile w/Receiving State Supplying Fuel:	\$.75 per mile
Per Mile w/Sending State Supplying Fuel:	.75/mile + fuel
Minimum Daily Charge Equipment:	Greater of \$75 per day or total mileage cost
Transport Cost per Mile w/Receiving State supplying fuel:	
Transport Cost per Mile w/Sending State Supplying Fuel:	N/A
Minimum Daily Charge for Transport: NOTE: List Operator Cost in Personnel Section.	N/A

**LOUISIANA DEPARTMENT OF FORESTRY
EQUIPMENT
2024 Rates**

Type:	Refrigerated Trailer
Make:	Various
Special Equipment: (LGP, Plow Type, Blade Type, With Foam, etc.)	
Special Moving Requirements: (Oversized Load, etc.)	Semi-Tractor Truck
Rates:	
Per Hour of Use w/Receiving State Supplying Fuel:	N/A
Per Hour of Use w/Sending State Supplying Fuel:	N/A
Per Mile w/Receiving State Supplying Fuel:	N/A
Per Mile w/Sending State Supplying Fuel:	N/A
Minimum Daily Charge Equipment:	\$275 per day with receiving state supplying fuel.
Transport Cost per Mile w/Receiving State supplying fuel:	Semi-Tractor Truck required @ \$3.00 per mile.
Transport Cost per Mile w/Sending State Supplying Fuel:	N/A
Minimum Daily Charge for Transport: NOTE: List Operator Cost in Personnel Section.	N/A

**LOUISIANA DEPARTMENT OF FORESTRY
EQUIPMENT
2024 Rates**

Type:	Miscellaneous Equipment
Make:	Various
Special Equipment: (LGP, Plow Type, Blade Type, With Foam, etc.)	N/A
Special Moving Requirements: (Oversized Load, etc.)	Requires vehicle or hauling unit for transportation to site.
Rates:	
Per Hour of Use w/Receiving State Supplying Fuel:	N/A
Per Hour of Use w/Sending State Supplying Fuel:	N/A
Per Mile w/Receiving State Supplying Fuel:	N/A
Per Mile w/Sending State Supplying Fuel:	N/A
Minimum Daily Charge Equipment w/Receiving State supplying fuel:	ATV \$100.00/day UTV \$200.00/day
Transport Cost per Mile w/Receiving State supplying fuel:	N/A
Transport Cost per Mile w/Sending State Supplying Fuel:	N/A
Minimum Daily Charge for Transport:	N/A
NOTE: List Operator Cost in Personnel Section.	

**LOUISIANA DEPARTMENT OF FORESTRY
AIRCRAFT
2024 Rates**

Type:	Detection Aircraft
Make:	Cessna 182T
Model:	2003
Special Equipment:	Two-way programmable radio, dual GPS
Passenger Capacity (exclude pilot):	3
Load Capacity or Retardant Gallons:	N/A
Rate: Per Hour of Use w/Receiving State Supplying Fuel:	\$190/hr.
Per Hour of Use w/Sending State Supplying Fuel:	190/hr. + fuel
Minimum Daily Charge: NOTE: List Operator Cost in Personnel Section:	Five hours per day

**LOUISIANA DEPARTMENT OF FORESTRY
PERSONNEL
2024 Rates**

NOTE: All Compact Personnel are guaranteed a Minimum of Eight Hours per Day

Qualifications:	Two Person Tractor Plow/Dozer Unit
Standard Rate of Pay:	Actual Cost of each person's salary & benefits plus 25% x hourly pay when hazardous.
Overtime Rate:	1.5 x employee salary over 40 hours/week
Per Diem Rate, if Food and Lodging are not Provided:	Actual Expense of lodging and GSA per diem rate for meals

**LOUISIANA DEPARTMENT OF FORESTRY
PERSONNEL**

2024 Rates

NOTE: All Compact Personnel are guaranteed a Minimum of Eight Hours per Day

Qualifications:	Two or Three Person Engine Unit
Standard Rate of Pay:	Actual Cost of each person's salary & benefits plus 25% x hourly pay when hazardous.
Overtime Rate:	1.5 x employee salary over 40 hours/week
Per Diem Rate, if Food and Lodging are not Provided:	Actual Expense of lodging and GSA per diem rate for meals

**LOUISIANA DEPARTMENT OF FORESTRY
PERSONNEL**

2024 Rates

NOTE: All Compact Personnel are guaranteed a Minimum of Eight Hours per Day

Qualifications:	Truck / Vehicle Operator
Standard Rate of Pay:	Actual Cost of each person's salary & benefits plus 25% x hourly pay when hazardous.
Overtime Rate:	1.5 x employee salary over 40 hours/week
Per Diem Rate, if Food and Lodging are not Provided:	Actual Expense of lodging and GSA per diem rate for meals

**LOUISIANA DEPARTMENT OF FORESTRY
PERSONNEL**

2024 Rates

NOTE: All Compact Personnel are guaranteed a Minimum of Eight Hours per Day

Qualifications:	20 Person Crew (NWCG qualified and pack tested).
Standard Rate of Pay:	Actual cost of employee's salary & benefits plus 25% x hourly pay when hazardous.
Overtime Rate:	1.5 x employee salary over 40 hours/week
Per Diem Rate, if Food and Lodging are not Provided:	Actual Expense of lodging and GSA per diem rate for meals

**LOUISIANA DEPARTMENT OF FORESTRY
PERSONNEL**

2024 Rates

**NOTE: All Compact Personnel are guaranteed a Minimum of Eight Hours
per Day**

Qualifications:	Pilot
Standard Rate of Pay:	Actual Cost of each person's salary & benefits
Overtime Rate:	1.5 x employee salary over 40 hours/week
Per Diem Rate, if Food and Lodging are not Provided:	Actual Expense of lodging and GSA per diem rate for meals

**MISSISSIPPI FORESTRY COMMISSION
EQUIPMENT
2024 Rates**

NOTE: Receiving Units are responsible for repairing damaged equipment and, sending States are responsible for routine maintenance

Type:	Dozer
Make:	CAT D5G, D5N, D5K, JD650
Special Equipment: (LGP, Plow Type, Blade Type, With Foam, etc.)	Stinger plow with blade winch or rear winch
Special Moving Requirements: (Oversized Load, etc.)	Tandem axle or truck with lowboy depending on dozer type (see transport rates)
Rates: Per Hour of Use w/Receiving State Supplying Fuel:	\$150.00 / Hour
Per Hour of Use w/Sending State Supplying Fuel:	Receiving state refunds fuel cost if not supplied
Minimum Daily Rate:	\$600.00 / day or hourly rate, whichever is greater. Minimum still applies for travel status.
NOTE: List Operator Cost in Personnel Section.	

Type:	Transports
Make:	Varies
Special Equipment:	D5N dozer requires lowboy
Special Moving Requirements: (Oversized Load, etc.)	Transports stay with dozers
Rates: Per Mile w/Sending State Supplying Fuel:	\$3.75 / Mile
Per Mile w/Sending State Supplying Fuel:	Receiving state refunds fuel cost if not supplied
Guarantee Rate per day:	\$400.00 / Day or mileage, whichever is greater. Minimum still applies for travel status.
NOTE: List Operator Cost in Personnel Section.	

**MISSISSIPPI FORESTRY COMMISSION
EQUIPMENT
2024 Rates**

Type:	Passenger Vehicle
Make:	Varies
Special Equipment: (LGP, Plow Type, Blade Type, With Foam, etc.)	Pickup truck, SUV, Van,
Special Moving Requirements: (Oversized Load, etc.)	
Rates: Per Hour of Use w/Receiving State Supplying Fuel: Per Hour of Use w/Sending State Supplying Fuel: Per Mile w/Receiving State Supplying Fuel: Per Mile w/Sending State Supplying Fuel: Minimum Daily Charge Equipment: Transport Cost per Mile w/Receiving State supplying fuel: Transport Cost per Mile w/Sending State Supplying Fuel: Minimum Daily Charge for Transport: NOTE: List Operator Cost in Personnel Section.	\$.85/mile Receiving state refunds fuel cost if not supplied \$250 / day or mileage, whichever is greater. Minimum still applies for travel status.

Type:	ATV / UTV
Make:	Varies
Special Equipment:	Water or backfire tanks available on request
Rates: Per Hour w/Receiving State Supplying Fuel:	\$25.00 / Hour

Per Hour w/Sending State Supplying Fuel:	Receiving state refunds fuel cost if not supplied
Minimum Daily Charge Equipment:	\$100 / Day or hourly rate, whichever is greater. Minimum still applies for travel status.
NOTE: List Operator Cost in Personnel Section.	

**MISSISSIPPI FORESTRY COMMISSION
PERSONNEL
2024 Rates**

NOTE: All Compact Personnel are guaranteed a Minimum of Eight Hours per Day

Qualifications:	Varies per position
Standard Rate of Pay:	Actual Hourly Rate Plus Fringe
Overtime Rate:	1.5 Hourly Over 40
Per Diem Rate, if Food and Lodging are not Provided:	State Per Diem Rates for Meal Plus Actual Lodging Cost

**NORTH CAROLINA FOREST SERVICE
EQUIPMENT
2024 Rates**

NOTE: Receiving Units are responsible for repairing damaged equipment and, sending States are responsible for routine maintenance

Type:	Tractor Plow Units										
Make:	Various										
Special Equipment: (LGP, Plow Type, Blade Type, With Foam, etc.)	N/A										
Special Moving Requirements: (Oversized Load, etc.)	Requires Truck Tractor w/ Trailer for road transport.										
Rates: Per Hour of Use w/Sending State Supplying Fuel:	<table> <tr><td>Type 1</td><td>\$135.00/hr.</td></tr> <tr><td>Type 2</td><td>\$113.00/hr.</td></tr> <tr><td>Type 3</td><td>\$97.00/hr.</td></tr> <tr><td>Type 4</td><td>\$85.00/hr.</td></tr> <tr><td>Nodwell/Flex Track/Marsh Master</td><td>\$113.00/hr.</td></tr> </table>	Type 1	\$135.00/hr.	Type 2	\$113.00/hr.	Type 3	\$97.00/hr.	Type 4	\$85.00/hr.	Nodwell/Flex Track/Marsh Master	\$113.00/hr.
Type 1	\$135.00/hr.										
Type 2	\$113.00/hr.										
Type 3	\$97.00/hr.										
Type 4	\$85.00/hr.										
Nodwell/Flex Track/Marsh Master	\$113.00/hr.										
Guarantee Rate per day:	<table> <tr><td>Type 1</td><td>\$1620.00/day</td></tr> <tr><td>Type 2</td><td>\$1356.00/day</td></tr> <tr><td>Type 3</td><td>\$1164.00/day</td></tr> <tr><td>Type 4</td><td>\$1020.00/day</td></tr> <tr><td>Nodwell/ FlexTrack/Marsh Master</td><td>\$1356.00/day</td></tr> </table> <p>Operator(s), their per diem, and equipment transportation, are not included in equipment rate. See Truck Tractor w/ Trailer for rate. See Personnel for operator rate.</p> <ol style="list-style-type: none"> Tractor Plow Units on the incident are charged for the actual hours of use or the guarantee, whichever is greater, except when in travel status to and from the receiving incident, and then it is based on the actual hours of use, no guarantee. 	Type 1	\$1620.00/day	Type 2	\$1356.00/day	Type 3	\$1164.00/day	Type 4	\$1020.00/day	Nodwell/ FlexTrack/Marsh Master	\$1356.00/day
Type 1	\$1620.00/day										
Type 2	\$1356.00/day										
Type 3	\$1164.00/day										
Type 4	\$1020.00/day										
Nodwell/ FlexTrack/Marsh Master	\$1356.00/day										

**NORTH CAROLINA FOREST SERVICE
EQUIPMENT
2024 Rates**

Type:	Equipment Transportation
Make:	Various
Special Equipment: (LGP, Plow Type, Blade Type, With Foam, etc.)	N/A
Special Moving Requirements: (Oversized Load, etc.)	N/A
Rates:	Truck Tractor and Trailer
Per Hour w/Sending State Supplying Fuel:	\$83.00/hour
Guarantee Rate per day:	\$996.00/day
	Truck Tractor Only
Per Hour w/Sending State Supplying Fuel:	\$73.00/hour
Guarantee Rate per day:	\$876.00/day
	Operator(s) and their per diem are not included in equipment rate. See Personnel for operator rate.
	Equipment on the incident is charged for the actual hours of use or the guarantee, whichever is greater, except when in travel status to and from the receiving incident, and then it is based on the actual hours of use, no guarantee.

**NORTH CAROLINA FOREST SERVICE
EQUIPMENT
2024 Rates**

Type:	Trucks
Make:	Various
Special Equipment: (LGP, Plow Type, Blade Type, With Foam, etc.)	N/A
Special Moving Requirements: (Oversized Load, etc.)	
Rates: Per Hour w/Sending State Supplying Fuel:	Stake Body Truck: \$107.00/hour Dump Truck: \$107.00/hour Box Truck -Medium Duty: \$26.00/hour Box Truck – Heavy Duty: \$33.00/hour Fuel Truck (Aviation or Ground): \$73.00/hour
Guarantee Rate per day:	Stake Body Truck: \$1284.00/day Dump Truck: \$1284.00/day Box Truck -Medium Duty: \$312.00/day Box Truck – Heavy Duty: \$396.00/day Fuel Truck (Aviation or Ground): \$876.00/day
.	Operator(s) and their per diem are not included in equipment rate. See Personnel for operator rate. Equipment on the incident is charged for the actual hours of use or the guarantee, whichever is greater, except when in travel status to and from the receiving incident, and then it is based on the actual hours of use, no guarantee.

**NORTH CAROLINA FOREST SERVICE
EQUIPMENT
2024 Rates**

Type:	Passenger Vehicles																				
Make:	Various																				
Special Equipment: (LGP, Plow Type, Blade Type, With Foam, etc.)	N/A																				
Special Moving Requirements: (Oversized Load, etc.)	N/A																				
Rates: Per Hour w/Sending State Supplying Fuel:	<table> <tr><td>Sedan:</td><td>\$18.00/hour</td></tr> <tr><td>Suburban, Large (6+ pass):</td><td>\$27.00/hour</td></tr> <tr><td>Suburban, Small (5 pass):</td><td>\$24.00/hour</td></tr> <tr><td>Pick Up Truck (Light Duty):</td><td>\$21.00/hour</td></tr> <tr><td>Pick Up Truck (1/2T):</td><td>\$34.00/hour</td></tr> <tr><td>Pick Up Truck (3/4- 1T):</td><td>\$37.00/hour</td></tr> <tr><td>Passenger Van:</td><td>\$42.00/hour</td></tr> <tr><td>Radio Engineers Vehicles (All):</td><td>\$33.00/hour</td></tr> <tr><td>Mechanic Vhcle (1T):</td><td>\$36.00/hour</td></tr> <tr><td>Mechanic Vhcle (1&1/2T):</td><td>\$54.00/hour</td></tr> </table>	Sedan:	\$18.00/hour	Suburban, Large (6+ pass):	\$27.00/hour	Suburban, Small (5 pass):	\$24.00/hour	Pick Up Truck (Light Duty):	\$21.00/hour	Pick Up Truck (1/2T):	\$34.00/hour	Pick Up Truck (3/4- 1T):	\$37.00/hour	Passenger Van:	\$42.00/hour	Radio Engineers Vehicles (All):	\$33.00/hour	Mechanic Vhcle (1T):	\$36.00/hour	Mechanic Vhcle (1&1/2T):	\$54.00/hour
Sedan:	\$18.00/hour																				
Suburban, Large (6+ pass):	\$27.00/hour																				
Suburban, Small (5 pass):	\$24.00/hour																				
Pick Up Truck (Light Duty):	\$21.00/hour																				
Pick Up Truck (1/2T):	\$34.00/hour																				
Pick Up Truck (3/4- 1T):	\$37.00/hour																				
Passenger Van:	\$42.00/hour																				
Radio Engineers Vehicles (All):	\$33.00/hour																				
Mechanic Vhcle (1T):	\$36.00/hour																				
Mechanic Vhcle (1&1/2T):	\$54.00/hour																				
Guarantee Rate per day:	<table> <tr><td>Sedan:</td><td>\$216.00/day</td></tr> <tr><td>Suburban, Large (6+ pass):</td><td>\$324.00/day</td></tr> <tr><td>Suburban, Small (5 pass):</td><td>\$288.00/day</td></tr> <tr><td>Pick Up Truck (Light Duty):</td><td>\$256.00/day</td></tr> <tr><td>Pick Up Truck (1/2T):</td><td>\$408.00/day</td></tr> <tr><td>Pick Up Truck (3/4-1T):</td><td>\$444.00/day</td></tr> <tr><td>Passenger Van:</td><td>\$504.00/day</td></tr> <tr><td>Radio Engineers Vehicles (All):</td><td>\$396.00/day</td></tr> <tr><td>Mechanic Vhcle (1T):</td><td>\$444.00/day</td></tr> <tr><td>Mechanic Vhcle (1&1/2T):</td><td>\$648.00/day</td></tr> </table>	Sedan:	\$216.00/day	Suburban, Large (6+ pass):	\$324.00/day	Suburban, Small (5 pass):	\$288.00/day	Pick Up Truck (Light Duty):	\$256.00/day	Pick Up Truck (1/2T):	\$408.00/day	Pick Up Truck (3/4-1T):	\$444.00/day	Passenger Van:	\$504.00/day	Radio Engineers Vehicles (All):	\$396.00/day	Mechanic Vhcle (1T):	\$444.00/day	Mechanic Vhcle (1&1/2T):	\$648.00/day
Sedan:	\$216.00/day																				
Suburban, Large (6+ pass):	\$324.00/day																				
Suburban, Small (5 pass):	\$288.00/day																				
Pick Up Truck (Light Duty):	\$256.00/day																				
Pick Up Truck (1/2T):	\$408.00/day																				
Pick Up Truck (3/4-1T):	\$444.00/day																				
Passenger Van:	\$504.00/day																				
Radio Engineers Vehicles (All):	\$396.00/day																				
Mechanic Vhcle (1T):	\$444.00/day																				
Mechanic Vhcle (1&1/2T):	\$648.00/day																				
NOTE: List Operator Cost in Personnel Section.																					

	<p>Operator(s) and their per diem are not included in equipment rate. See Personnel for operator rate.</p> <p>Equipment on the incident is charged for the actual hours of use or the guarantee, whichever is greater, except when in travel status to and from the receiving incident, and then it is based on the actual hours of use, no guarantee.</p>
--	--

**NORTH CAROLINA FOREST SERVICE
EQUIPMENT
2024 Rates**

Type:	Engines						
Make:	Type 4 or Type 5 or Full Track/Skidgine						
Special Equipment: (LGP, Plow Type, Blade Type, With Foam, etc.)	N/A						
Special Moving Requirements: (Oversized Load, etc.)	N/A						
Rates:							
Per Hour w/Sending State Supplying Fuel	<table style="width: 100%; border: none;"> <tr> <td style="width: 50%;">Type 4</td> <td style="text-align: right;">\$97.00/hour</td> </tr> <tr> <td>Type 5</td> <td style="text-align: right;">\$85.00/hour</td> </tr> <tr> <td>Full Track/ Skidgine</td> <td style="text-align: right;">\$97.00/hour</td> </tr> </table>	Type 4	\$97.00/hour	Type 5	\$85.00/hour	Full Track/ Skidgine	\$97.00/hour
Type 4	\$97.00/hour						
Type 5	\$85.00/hour						
Full Track/ Skidgine	\$97.00/hour						
Guarantee Rate per day:	<table style="width: 100%; border: none;"> <tr> <td style="width: 50%;">Type 4</td> <td style="text-align: right;">\$1164.00 per day</td> </tr> <tr> <td>Type 5</td> <td style="text-align: right;">\$1020.00 per day</td> </tr> <tr> <td>Full Track/ Skidgine</td> <td style="text-align: right;">\$1164.00 per day</td> </tr> </table> <p>Operator(s), their per diem, and foam are not included in equipment rate. See Personnel for operator rate. See Supply for foam rate.</p> <p>Equipment on the incident is charged for the actual hours of use or the guarantee, whichever is greater, except when in travel status to and</p>	Type 4	\$1164.00 per day	Type 5	\$1020.00 per day	Full Track/ Skidgine	\$1164.00 per day
Type 4	\$1164.00 per day						
Type 5	\$1020.00 per day						
Full Track/ Skidgine	\$1164.00 per day						

	from the receiving incident, and then it is based on the actual hours of use, no guarantee.
--	---

**NORTH CAROLINA FOREST SERVICE
EQUIPMENT
2024 Rates**

Type:	Engines
Make:	Type 6 or Type 7
Special Equipment: (LGP, Plow Type, Blade Type, With Foam, etc.)	N/A
Special Moving Requirements: (Oversized Load, etc.)	N/A
Rates:	
Per Hour w/Sending State Supplying Fuel:	\$70.00/hour
Guarantee Rate per day:	\$840.00 per day
	Operator(s), their per diem, and foam are not included in equipment rate. See Personnel for operator rate. See Supply for foam rate.
	Equipment on the incident is charged for the actual hours of use or the guarantee, whichever is greater, except when in travel status to and from the receiving incident, and then it is based on the actual hours of use, no guarantee.

**NORTH CAROLINA FOREST SERVICE
EQUIPMENT
2024 Rates**

Type:	Water Tenders
Make:	Type 1, 2 or 3
Special Equipment: (LGP, Plow Type, Blade Type, With Foam, etc.)	N/A
Special Moving Requirements: (Oversized Load, etc.)	N/A
Rates:	
Per Hour w/Sending State Supplying Fuel:	\$81.00
Guarantee Rate per day:	\$972.00/day
	Operator(s) and their per diem are not included in equipment rate. See Personnel for operator rate.
	Equipment on the incident is charged for the actual hours of use or the guarantee, whichever is greater, except when in travel status to and from the receiving incident, and then it is based on the actual hours of use, no guarantee.

**NORTH CAROLINA FOREST SERVICE
EQUIPMENT
2024 Rates**

Type:	Portable Pumps
Make:	Various
Special Equipment: (LGP, Plow Type, Blade Type, With Foam, etc.)	Hose and appliances included.
Special Moving Requirements: (Oversized Load, etc.)	Requires Vehicle to transport unit to site.
Rates: Per Hour of Use w/Sending State Supplying Fuel: Guarantee Rate per day: Transport Cost:	<p>1” to 4” Diameter Discharge \$23.00/hr.</p> <p>\$276.00/day</p> <p>Cost of transport is dependent on the type of vehicle used.</p> <p>Operator(s) and their per diem are not included in equipment rate. See Personnel for operator rate.</p> <p>1. Portable Pumps on the incident are charged for the actual hours of use or the guarantee, whichever is greater, except when in travel status to and from the receiving incident, and then it is based on the actual hours of use, no guarantee.</p>

**NORTH CAROLINA FOREST SERVICE
EQUIPMENT
2024 Rates**

Type:	Self-Contained Pumps
Make:	Various
Special Equipment: (LGP, Plow Type, Blade Type, With Foam, etc.)	Includes irrigation system.
Special Moving Requirements: (Oversized Load, etc.)	Requires Vehicle to transport unit to site.
Rates: Per Hour of Use w/Sending State Supplying Fuel:	<p>4" to 6" Discharge \$46.00/hr.</p> <p>Volume Lift (self-contained) \$68.00/hr.</p> <p>Rainbird Irrigation Gun Trailer \$7.00/hr.</p>
Guarantee Rate per day:	<p>4" to 6" Discharge \$552.00/day</p> <p>Volume Lift self-contained \$816.00/day</p> <p>Rainbird Irrigation Gun Trailer \$84.00/day</p>
Transport Cost	<p>Cost of transport is dependent on the type of vehicle used.</p> <p>Operator(s) and their per diem are not included in equipment rate. See Personnel for operator rate.</p> <p>1. Self-Contained Pumps on the incident are charged for the actual hours of use or the guarantee, whichever is greater, except when in travel status to and from the receiving incident, and then it is based on the actual hours of use, no guarantee.</p>

**NORTH CAROLINA FOREST SERVICE
EQUIPMENT
2024 Rates**

Type:	Volume Lift Pumps plus Farm Tractor
Make:	Various
Special Equipment: (LGP, Plow Type, Blade Type, With Foam, etc.)	N/A
Special Moving Requirements: (Oversized Load, etc.)	Requires Vehicle to transport unit(s) to site.
Rates: Per Hour of Use w/Sending State Supplying Fuel:	All Discharge Sizes \$128.00/hr.
Guarantee Rate per day:	All Discharge Sizes \$1536.00/day
Transport Cost per Mile w/Sending State Supplying Fuel:	Cost of transport is dependent on the type of vehicle used. See Vehicles for Rates. Operator(s) and their per diem are not included in equipment rate. See Personnel for operator rate. 1. Volume Lift Pumps on the incident are charged for the actual hours of use or the guarantee, whichever is greater, except when in travel status to and from the receiving incident, and then it is based on the actual hours of use, no guarantee.

**NORTH CAROLINA FOREST SERVICE
EQUIPMENT
2024 Rates**

Type:	Wheeled Tractors	
Make:	Various	
Special Equipment: (LGP, Plow Type, Blade Type, With Foam, etc.)	N/A	
Special Moving Requirements: (Oversized Load, etc.)	Requires Truck Tractor w/ Trailer for Road Transportation	
Rates:		
Per Hour of Use w/Sending State Supplying Fuel:	40 to 60 hp	\$49.00/hr.
	70 hp +	\$64.00/hr.
Guarantee Rate per day:	40 to 60 hp	\$588.00/day
	70 hp +	\$768.00/day
	See Truck Tractor w/ Trailer for Rates	
Transport Cost	Operator(s) and their per diem are not included in equipment rate. See Personnel for operator rate.	
	<ol style="list-style-type: none"> 1. Wheeled Tractors on the incident are charged for the actual hours of use or the guarantee, whichever is greater, except when in travel status to and from the receiving incident, and then it is based on the actual hours of use, no guarantee. 	

**NORTH CAROLINA FOREST SERVICE
EQUIPMENT
2024 Rates**

Type:	Motor Graders
Make:	Various
Special Equipment: (LGP, Plow Type, Blade Type, With Foam, etc.)	N/A
Special Moving Requirements: (Oversized Load, etc.)	Requires Truck Tractor w/ Trailer for road transport.
Rates: Per Hour of Use w/Sending State Supplying Fuel:	\$62.00/ hour
Guarantee Rate per day:	\$744.00/day
Transport Cost	See Truck Tractor w/ Trailer for Rates Operator(s), and their per diem are not included in equipment rate. See Personnel for operator rate. 1. Motor Graders on the incident are charged for the actual hours of use or the guarantee, whichever is greater, except when in travel status to and from the receiving incident, and then it is based on the actual hours of use, no guarantee.

**NORTH CAROLINA FOREST SERVICE
EQUIPMENT
2024 Rates**

Type:	Incident Support Trailers
Make:	Various
Special Equipment: (LGP, Plow Type, Blade Type, With Foam, etc.)	N/A
Special Moving Requirements: (Oversized Load, etc.)	Requires Vehicle to transport unit(s) to site.
Rates: Daily Charge Equipment: Transport Cost:	Trailer 22' to 32' \$312.00/day Trailer 40" plus \$572.00/day Cost of transport is dependent on the type of vehicle used. See Vehicle rates.
NOTE: Generator Cost Separate	See Miscellaneous Equipment for Generator Cost

**NORTH CAROLINA FOREST SERVICE
EQUIPMENT
2024 Rates**

Type:	Forklifts
Make:	Various
Special Equipment: (LGP, Plow Type, Blade Type, With Foam, etc.)	N/A
Special Moving Requirements: (Oversized Load, etc.)	Requires Truck Tractor w/ Trailer for road transport.
Rates: Per Hour of Use w/Sending State Supplying Fuel:	Forklift 6,000 lb 34.00/hour Forklift 10,000 lb \$52.00/hour
Guarantee Rate per day:	Forklift 6,000 lb 408.00/day Forklift 10,000 lb \$624.00/day
Transport Cost	See Truck Tractor w/ Trailer for Rates Operator(s) and their per diem are not included in equipment rate. See Personnel for operator rate. 1. All Terrain Forklifts on the incident are charged for the actual hours of use or the guarantee, whichever is greater, except when in travel status to and from the receiving incident, and then it is based on the actual hours of use, no guarantee.

**NORTH CAROLINA FOREST SERVICE
EQUIPMENT
2024 Rates**

Type:	Front End Loader/Skid-Steer, Backhoe, Excavator						
Make:	Various						
Special Equipment: (LGP, Plow Type, Blade Type, With Foam, etc.)	N/A						
Special Moving Requirements: (Oversized Load, etc.)	Requires Truck Tractor w/ Trailer or other vehicle for road transport.						
Rates: Per Hour of Use w/Sending State Supplying Fuel:	<table> <tr> <td>Front End Loader/Skid-Steer</td> <td>\$40.00/hour</td> </tr> <tr> <td>Backhoe (up to 1cy)</td> <td>\$75.00/hour</td> </tr> <tr> <td>Excavator, Hydrlic (up to 2 cy)</td> <td>\$135.00/hour</td> </tr> </table>	Front End Loader/Skid-Steer	\$40.00/hour	Backhoe (up to 1cy)	\$75.00/hour	Excavator, Hydrlic (up to 2 cy)	\$135.00/hour
Front End Loader/Skid-Steer	\$40.00/hour						
Backhoe (up to 1cy)	\$75.00/hour						
Excavator, Hydrlic (up to 2 cy)	\$135.00/hour						
Guarantee Rate per day:	<table> <tr> <td>Front End Loader/Skid-Steer</td> <td>\$480.00/day</td> </tr> <tr> <td>Backhoe (up to 1cy)</td> <td>\$900.00/day</td> </tr> <tr> <td>Excavator, Hydrlic (up to 2 cy)</td> <td>\$1620.00/day</td> </tr> </table>	Front End Loader/Skid-Steer	\$480.00/day	Backhoe (up to 1cy)	\$900.00/day	Excavator, Hydrlic (up to 2 cy)	\$1620.00/day
Front End Loader/Skid-Steer	\$480.00/day						
Backhoe (up to 1cy)	\$900.00/day						
Excavator, Hydrlic (up to 2 cy)	\$1620.00/day						
Transport Cost	<p>See Truck Tractor w/ Trailer or other vehicle Rates.</p> <p>Operator(s) and their per diem are not included in equipment rate. See Personnel for operator rate.</p> <p>Equipment on the incident are charged for the actual hours of use or the guarantee, whichever is greater, except when in travel status to and from the receiving incident, and then it is based on the actual hours of use, no guarantee.</p>						

**NORTH CAROLINA FOREST SERVICE
EQUIPMENT
2024 Rates**

Type:	Miscellaneous Equipment																		
Make:	Various																		
Special Equipment: (LGP, Plow Type, Blade Type, With Foam, etc.)	N/A																		
Special Moving Requirements: (Oversized Load, etc.)	Requires Vehicle or Truck Tractor w/ Trailer to transport to site.																		
Rates: Per Hour of Use w/Sending State Supplying Fuel:	<table> <tr> <td>Generators <25KW</td> <td>\$29.00/hr.</td> </tr> <tr> <td>26 to 60KW</td> <td>\$52.00/hr.</td> </tr> <tr> <td>60 KW +</td> <td>\$75.00/hr.</td> </tr> <tr> <td>Boats (All Sizes)</td> <td>\$57.00/hr.</td> </tr> <tr> <td>ATV w/trailer (All)</td> <td>\$37.00/hr.</td> </tr> <tr> <td>UTV w/trailer (All)</td> <td>\$47.00/hr.</td> </tr> </table>	Generators <25KW	\$29.00/hr.	26 to 60KW	\$52.00/hr.	60 KW +	\$75.00/hr.	Boats (All Sizes)	\$57.00/hr.	ATV w/trailer (All)	\$37.00/hr.	UTV w/trailer (All)	\$47.00/hr.						
Generators <25KW	\$29.00/hr.																		
26 to 60KW	\$52.00/hr.																		
60 KW +	\$75.00/hr.																		
Boats (All Sizes)	\$57.00/hr.																		
ATV w/trailer (All)	\$37.00/hr.																		
UTV w/trailer (All)	\$47.00/hr.																		
Other Misc. Equipment not listed use standard FEMA rates.																			
Guarantee Rate per day:	<table> <tr> <td>Generators <25KW</td> <td>\$348.00/day</td> </tr> <tr> <td>26 to 60KW</td> <td>\$624.00/day</td> </tr> <tr> <td>60KW+</td> <td>\$900.00/day</td> </tr> <tr> <td>Boats (All Sizes)</td> <td>\$684.00/day</td> </tr> <tr> <td>ATV w/trailer (All)</td> <td>\$444.00/day</td> </tr> <tr> <td>UTV w/trailer (All)</td> <td>\$564.00/day</td> </tr> <tr> <td>Mobile RAWS</td> <td>\$104.00/day</td> </tr> <tr> <td>E-BAM Unit</td> <td>\$104.00/day</td> </tr> <tr> <td>Portable Bridge (See Truck Tractor for Transportation)</td> <td>\$624.00/day</td> </tr> </table>	Generators <25KW	\$348.00/day	26 to 60KW	\$624.00/day	60KW+	\$900.00/day	Boats (All Sizes)	\$684.00/day	ATV w/trailer (All)	\$444.00/day	UTV w/trailer (All)	\$564.00/day	Mobile RAWS	\$104.00/day	E-BAM Unit	\$104.00/day	Portable Bridge (See Truck Tractor for Transportation)	\$624.00/day
Generators <25KW	\$348.00/day																		
26 to 60KW	\$624.00/day																		
60KW+	\$900.00/day																		
Boats (All Sizes)	\$684.00/day																		
ATV w/trailer (All)	\$444.00/day																		
UTV w/trailer (All)	\$564.00/day																		
Mobile RAWS	\$104.00/day																		
E-BAM Unit	\$104.00/day																		
Portable Bridge (See Truck Tractor for Transportation)	\$624.00/day																		
Transport Cost:	<p>Cost of transport is dependent on the type of Vehicle used</p> <p>Miscellaneous Equipment on the incident is charged for the actual hours of use or a per day rate.</p>																		
NOTE: <u>Other Misc. Equipment not listed use standard FEMA rates.</u>	<ol style="list-style-type: none"> Miscellaneous Equipment that has a per hour rate option may be charged for the actual hours of use or the guarantee, whichever is greater, except when in travel status to and from the 																		

--

receiving incident, and then it is based on the actual hours of use, no guarantee.

**NORTH CAROLINA FOREST SERVICE
SUPPLIES
2024 Rates**

Type:	Foam, Suppressants, and Retardant
Make:	N/A
Special Equipment: (LGP, Plow Type, Blade Type, With Foam, etc.)	N/A
Special Moving Requirements: (Oversized Load, etc.)	N/A
Rates:	
Rate per Gallon:	Foam \$35.00 Suppressants \$1.00 Retardant \$10.00

**NORTH CAROLINA FOREST SERVICE
AIRCRAFT
2024 Rates**

Type:	Fixed Wing Aircraft
Make:	Cessna
Model:	185 Patrol/Utility
Special Equipment:	N/A
Passenger Capacity (exclude pilot):	3
Load Capacity or Retardant Gallons:	N/A
Rate: Per Hour of Use w/Sending State Supplying Fuel:	\$215.00/hr.
Guarantee Rate per day:	\$860.00/day
	Pilot(s), crewmember(s), mechanic(s), or support equipment (if applicable), and their per diem are not included in equipment rate. See Personnel for pilot, mechanic, and crewmember rate.
	1. Aircraft on the incident are charged for the actual hours of use or the guarantee, whichever is greater.

**NORTH CAROLINA FOREST SERVICE
AIRCRAFT
2024 Rates**

Type:	Fixed Wing Aircraft
Make:	Cessna
Model:	182 Patrol/Utility
Special Equipment:	N/A
Passenger Capacity (exclude pilot):	3
Load Capacity or Retardant Gallons:	N/A
Rate: Per Hour of Use w/Sending State Supplying Fuel:	\$215.00/hr.
Guarantee Rate per day:	\$860.00/day
	<p>Pilot(s), crewmember(s), mechanic(s), or support equipment (if applicable), and their per diem are not included in equipment rate. See Personnel for pilot, mechanic, and crewmember rate.</p> <p>1. Aircraft on the incident are charged for the actual hours of use or the guarantee, whichever is greater.</p>

**NORTH CAROLINA FOREST SERVICE
AIRCRAFT
2024 Rates**

Type:	Fixed Wing Aircraft
Make:	Cessna
Model:	206 Patrol/Utility
Special Equipment:	N/A
Passenger Capacity (exclude pilot):	3
Load Capacity or Retardant Gallons:	N/A
Rate: Per Hour of Use w/Sending State Supplying Fuel:	\$225.00/hr.
Guarantee Rate per day:	\$900.00/day
	Pilot(s), crewmember(s), mechanic(s), or support equipment (if applicable), and their per diem are not included in equipment rate. See Personnel for pilot, mechanic, and crewmember rate.
	Aircraft on the incident are charged for the actual hours of use or the guarantee, whichever is greater.

**NORTH CAROLINA FOREST SERVICE
AIRCRAFT
2024 Rates**

Type:	Fixed Wing Aircraft
Make:	Beechcraft
Model:	T-34C
Special Equipment:	N/A
Passenger Capacity (exclude pilot):	1
Load Capacity or Retardant Gallons:	N/A
Rate: Per Hour of Use w/Sending State Supplying Fuel: Guarantee Rate per day:	<p>\$240.00/hr.</p> <p>\$960.00/day</p> <p>Pilot(s), crewmember(s), mechanic(s), or support equipment (if applicable), and their per diem are not included in equipment rate. See Personnel for pilot, mechanic, and crewmember rate.</p> <p>Aircraft on the incident are charged for the actual hours of use or the guarantee, whichever is greater.</p>

**NORTH CAROLINA FOREST SERVICE
AIRCRAFT
2024 Rates**

Type:	Fixed Wing Aircraft
Make:	Daher Kodiak
Model:	100 Load/Utility
Special Equipment:	N/A
Passenger Capacity (exclude pilot):	
Load Capacity or Retardant Gallons:	N/A
Rate: Per Hour of Use w/Sending State Supplying Fuel:	\$700.00/hr.
Guarantee Rate per day:	\$2800.00/day
	<p>Pilot(s), crewmember(s), mechanic(s), or support equipment (if applicable), and their per diem are not included in equipment rate. See Personnel for pilot, mechanic, and crewmember rate.</p> <ol style="list-style-type: none"> Aircraft on the incident are charged for the actual hours of use or the guarantee, whichever is greater.

**NORTH CAROLINA FOREST SERVICE
AIRCRAFT
2024 Rates**

Type:	Single Engine Air Tankers (SEATs)
Make:	AirTractor
Model:	AT-802F
Special Equipment:	N/A
Passenger Capacity (exclude pilot):	None
Load Capacity or Retardant Gallons:	800 Gallons
Rate: Per Hour of Use w/Receiving State Supplying Fuel:	\$900.00/hr.
Guarantee Rate per day:	\$3,600.00/day
	<p>Pilot(s), crewmember(s), mechanic(s), or support equipment (if applicable), foam, suppressant, or retardant (if applicable) and their per diem are not included in equipment rate. See Personnel for pilot, mechanic, and crewmember rate. See Supply for foam and retardant rate.</p> <p>2. Aircraft on the incident are charged for the actual hours of use or the guarantee, whichever is greater.</p>

**NORTH CAROLINA FOREST SERVICE
AIRCRAFT
2024 Rates**

Type:	Rotor Wing Aircraft
Make:	Bell
Model:	UH-1H
Special Equipment:	Bambi Bucket, Aerial Ignition Device Machine
Passenger Capacity (exclude pilot):	8
Load Capacity or Retardant Gallons:	240 Gallons
Rate: Per Hour of Use w/Sending State Supplying Fuel:	\$1450.00/hr.
Guarantee Rate per day:	\$5800.00/day
	<p>Pilot(s), crewmember(s), mechanic(s), support equipment (if applicable), foam (if applicable), and their per diem are not included in equipment rate. See Personnel for pilot, mechanic, and crewmember rate.</p> <p>1. Aircraft on the incident are charged for the actual hours of use or the guarantee, whichever is greater.</p>

**NORTH CAROLINA FOREST SERVICE
AIRCRAFT
2024 Rates**

Type:	Rotor Wing Aircraft
Make:	Bell
Model:	UH-1H+ (Super Huey)
Special Equipment:	Bambi Bucket, Aerial Ignition Device Machine
Passenger Capacity (exclude pilot):	8
Load Capacity or Retardant Gallons:	240 Gallons
Rate: Per Hour of Use w/Sending State Supplying Fuel:	\$1350.00/hr.
Guarantee Rate per day:	\$5400.00/day
	<p>Pilot(s), crewmember(s), mechanic(s), support equipment (if applicable), foam (if applicable), and their per diem are not included in equipment rate. See Personnel for pilot, mechanic, and crewmember rate.</p> <ol style="list-style-type: none"> Aircraft on the incident are charged for the actual hours of use or the guarantee, whichever is greater.

**NORTH CAROLINA FOREST SERVICE
AIRCRAFT
2024 Rates**

Type:	Rotor Wing Aircraft
Make:	American Eurocopter
Model:	AS350-B3
Special Equipment:	Bambi Bucket, Aerial Ignition Device Machine
Passenger Capacity (exclude pilot):	4
Load Capacity or Retardant Gallons:	240 Gallons
Rate: Per Hour of Use w/Sending State Supplying Fuel: Guarantee Rate per day:	<p>\$850.00/hr.</p> <p>\$3400.00/day</p> <p>Pilot(s), crewmember(s), mechanic(s), support equipment (if applicable), foam (if applicable), and their per diem are not included in equipment rate. See Personnel for pilot, mechanic, and crewmember rate.</p> <p>1. Aircraft on the incident are charged for the actual hours of use or the guarantee, whichever is greater.</p>

**NORTH CAROLINA FOREST SERVICE
AIRCRAFT
2024 Rates**

Type:	UAS
Make:	Various
Model:	Various
Special Equipment:	Dragon Balls included for units with IGNIS
Passenger Capacity (exclude pilot):	N/A
Load Capacity or Retardant Gallons:	N/A
Rate: Per Hour of Use w/Sending State Supplying Fuel:	Type 4 Small \$25.00/hr. Type 4 Medium \$35.00/hr. Type 4 Large \$60.00/hr.
Guarantee Rate per day:	Type 4 Small \$300.00/day Type 4 Medium \$420.00/day Type 4 Large \$720.00/day
Examples: *Type 4 Small- DJI Mavic 3T w/ infrared camera *Type 4 Medium- DJI Matrice 200 w/ infrared camera *Type 4 Large- DJI Matrice 600 Pro or Alta X. Both w/ IGNIS ignition	Pilot(s) salary and their per diem are not included in equipment rate. See Personnel for pilot rate. Aircraft on the incident are charged for the actual hours of use or the guarantee, whichever is greater.

**NORTH CAROLINA FOREST SERVICE
AIRCRAFT
2024 Rates**

Type:	Modules and Misc.
Make:	
Model:	
Special Equipment:	
Passenger Capacity (exclude pilot):	
Load Capacity or Retardant Gallons:	
Air Ops Command Trailer (Truck & Trailer)	\$832.00/day-Guarantee Rate per day
Helicopter Operations Support Unit (Truck & Trailer)	\$78.00/hour \$312/day-Guarantee Rate per day
Mobile Retardant Base: MRB required support equipment – Truck Tractor, Mechanic’s Vehicle, Portable Pump, Forklift, Box Truck and Air Ops Command Trailer (Truck & Trailer). Rates for required equipment is not included in the MRB rate. See equipment for applicable rates.	\$364.00/hour \$4368.00/day-Guarantee Rate per day Includes staffing of 1 SEMG, 1 RAMP, and 2 FWPTs. Salaries, fringe, and per diem not included in the MRB rate.
Air Mobile SEAT Module – includes 2-AT802F Airtankers, 1-T-34C Lead Plane, and 1-Kodiak 100 Load Plane	See Established rates per piece of equipment.
Ground SEAT Module – includes 2-AT802F Airtankers, 1-T-34C Lead Plane, and Mobile Retardant Base (see MRB for required equipment and staffing).	See established rates per piece of equipment.

**NORTH CAROLINA FOREST SERVICE
PERSONNEL
2024 Rates**

NOTE: All Compact Personnel are guaranteed a Minimum of Eight Hours per Day

Qualifications:	Two (2) CIM Incident Management Teams (Wildfire & All-Hazard). Type 2 IA hand crews upon request. Additional Type 3 Incident Management Teams, hand crews and specialist/overhead personnel available.
Standard Rate of Pay:	Salary and Benefits – Varies by individual.
Overtime Rate:	Varies by individual
Per Diem Rate, if Food and Lodging are not Provided:	Current North Carolina out-of-state per diem rate will apply for meals. Lodging will be actual cost.

OKLAHOMA FORESTRY SERVICES - 2024 EQUIPMENT RATES

Equipment	Mileage Rate	Guarantee Daily Rate
Type 3 Dozer 750 / 650		\$1680
Type 4 Dozer 550 / 450		\$1440
Truck Trailer / Bed – 5 Ton	\$3.45	\$660
Truck Trailer / Bed – 3 Ton	\$2.88	\$540
Engine Type 6	\$0.86	\$900
Bambi Bucket, 660 gal		\$750
Bambi Bucket, 1320 gal		\$1500
Wheeled Tractor – 40-60 HP		\$360
Wheeled Tractor – 70 HP		\$480
Motor Grader		\$480
Mechanic Truck w/ crane, welder, compressor, and tools	\$1.72	\$300
Dump Truck	\$1.72	\$300
Trailer Mounted Chipper, 15”		\$400
Forklift – 18,000- 50,000 lbs.		\$400
UTV w/ trailer		\$190
Sedan or SUV	\$0.86	\$200
Pickup, ½ - ¾ ton	\$0.86	\$200
Pickup, 1 ton	\$0.86	\$240
Passenger Van	\$0.86	\$240
Mobile Communications Vehicle	\$0.86	\$2200

Equipment will be billed accordingly:

- Daily mileage will be charged according to the mileage rates above.
- Equipment will be charged the guarantee daily rate when resourced from OFS.

All OFS Equipment will be provided and billed accordingly:

- All equipment will come wet with OFS providing fuel.
- If fuel is provided by the incident, the fuel tickets will be collected, attached, and deducted from the final bill.
- Any Class A foam used will be provided by the receiving unit (Incident).
- Claims for damages and loss, which occur at the incident, will be documented with the incident at the time they occur, or prior to demobilization. All

equipment damaged in the firefighting effort is the responsibility of the receiving unit.

- The sending state will be responsible for routine maintenance on all OFS equipment.
- All equipment will meet NWCG minimum standards and typing.
- Receiving unit is responsible for any shipping costs involving equipment and supplies.
- Equipment mileage will be recorded on Equipment Shift Tickets according to the NWCG Standards for Interagency Incident Business Management.
- Personnel time will be recorded on the OF-288, Incident Time Report.
- All resourced equipment will be solely operated by OFS personnel unless previously approved by OFS Fire Management Chief or due to emergency circumstances.
- All established rates apply between OFS and outside entities no matter the hiring agency or type of agreement.

**SOUTH CAROLINA FORESTRY COMMISSION
EQUIPMENT
2024 Rates**

NOTE: Receiving Units are responsible for repairing damaged equipment and, sending States are responsible for routine maintenance

Type:	Tractor Plow
Make:	JD 700, Cat D6N
Special Equipment: (LGP, Plow Type, Blade Type, With Foam, etc.)	Standard or LGP with either pull type or lift plow with winch and blade
Special Moving Requirements: (Oversized Load, etc.)	None
Rates: Per Hour of Use w/Receiving State Supplying Fuel:	N/A (If receiving state supplies fuel, cost will be deducted from invoice)
Per Hour of Use w/Sending State Supplying Fuel:	\$150/hour
Per Mile w/Receiving State Supplying Fuel:	
Per Mile w/Sending State Supplying Fuel:	
Minimum Daily Charge Equipment:	2 hours/day
Transport Cost per Mile w/Receiving State supplying fuel:	
Transport Cost per Mile w/Sending State Supplying Fuel:	
Minimum Daily Charge for Transport: NOTE: List Operator Cost in Personnel Section.	

**SOUTH CAROLINA FORESTRY COMMISSION
EQUIPMENT
2024 Rates**

Type:	Tractor Plow
Make:	JD 650, Dresta T D 9, Cat D 5, Cat D 4
Special Equipment: (LGP, Plow Type, Blade Type, With Foam, etc.)	Standard or LGP with either pull type or lift plow with winch and blade
Special Moving Requirements: (Oversized Load, etc.)	None
Rates: Per Hour of Use w/Receiving State Supplying Fuel:	N/A (If receiving state supplies fuel, cost will be deducted from invoice)
Per Hour of Use w/Sending State Supplying Fuel:	\$90/hour
Per Mile w/Receiving State Supplying Fuel:	
Per Mile w/Sending State Supplying Fuel:	
Minimum Daily Charge Equipment:	2 hours/day
Transport Cost per Mile w/Receiving State supplying fuel:	
Transport Cost per Mile w/Sending State Supplying Fuel:	
Minimum Daily Charge for Transport: NOTE: List Operator Cost in Personnel Section.	

**SOUTH CAROLINA FORESTRY COMMISSION
EQUIPMENT
2024 Rates**

Type:	Tractor Plow Unit
Make:	JD 450, JD 550, Dresta TD 8
Special Equipment: (LGP, Plow Type, Blade Type, With Foam, etc.)	Standard or LGP with either pull type or lift plow with winch and blade
Special Moving Requirements: (Oversized Load, etc.)	None
Rates: Per Hour of Use w/Receiving State Supplying Fuel:	N/A (If receiving state supplies fuel, cost will be deducted from invoice)
Per Hour of Use w/Sending State Supplying Fuel:	\$80/hour
Per Mile w/Receiving State Supplying Fuel:	
Per Mile w/Sending State Supplying Fuel:	
Minimum Daily Charge Equipment:	2 hours/day
Transport Cost per Mile w/Receiving State supplying fuel:	
Transport Cost per Mile w/Sending State Supplying Fuel:	
Minimum Daily Charge for Transport: NOTE: List Operator Cost in Personnel Section.	

**SOUTH CAROLINA FORESTRY COMMISSION
EQUIPMENT
2024 Rates**

Type:	Type 3 Engine
Make:	Various
Special Equipment: (LGP, Plow Type, Blade Type, With Foam, etc.)	None
Special Moving Requirements: (Oversized Load, etc.)	None
Rates:	
Per Hour of Use w/Receiving State Supplying Fuel:	\$75.00
Per Hour of Use w/Sending State Supplying Fuel:	
Per Mile w/Receiving State Supplying Fuel:	\$3.00
Per Mile w/Sending State Supplying Fuel:	
Minimum Daily Charge Equipment:	8 Hours/day (\$500.00) Actual hours per day charged during travel to and from incident
Transport Cost per Mile w/Receiving State supplying fuel:	
Transport Cost per Mile w/Sending State Supplying Fuel:	
Minimum Daily Charge for Transport:	
NOTE: List Operator Cost in Personnel Section.	

**SOUTH CAROLINA FORESTRY COMMISSION
EQUIPMENT
2024 Rates**

Type:	Type 6 engine
Make:	Various
Special Equipment: (LGP, Plow Type, Blade Type, With Foam, etc.)	1-ton 4X4
Special Moving Requirements: (Oversized Load, etc.)	None
Rates: Per Hour of Use w/Receiving State Supplying Fuel:	
Per Hour of Use w/Sending State Supplying Fuel:	\$45.00
Per Mile w/Receiving State Supplying Fuel:	\$1.50/mile
Per Mile w/Sending State Supplying Fuel:	\$1.50/mile
Minimum Daily Charge Equipment:	8 hours/day (\$360.00); Actual hours per day charged during travel to and from incident.
Transport Cost per Mile w/Receiving State supplying fuel:	
Transport Cost per Mile w/Sending State Supplying Fuel:	
Minimum Daily Charge for Transport: NOTE: List Operator Cost in Personnel Section.	

**SOUTH CAROLINA FORESTRY COMMISSION
EQUIPMENT
2024 Rates**

Type:	SUV
Make:	Various
Special Equipment: (LGP, Plow Type, Blade Type, With Foam, etc.)	None
Special Moving Requirements: (Oversized Load, etc.)	None
Rates: Per Hour of Use w/Receiving State Supplying Fuel:	
Per Hour of Use w/Sending State Supplying Fuel:	
Per Mile w/Receiving State Supplying Fuel:	\$.56/mile
Per Mile w/Sending State Supplying Fuel:	\$.56/mile
Minimum Daily Charge Equipment:	\$20/day
Transport Cost per Mile w/Receiving State supplying fuel:	
Transport Cost per Mile w/Sending State Supplying Fuel:	
Minimum Daily Charge for Transport: NOTE: List Operator Cost in Personnel Section.	

**SOUTH CAROLINA FORESTRY COMMISSION
EQUIPMENT
2024 Rates**

Type:	Water Handling Equipment Trailer
Make:	N/A
Special Equipment: (LGP, Plow Type, Blade Type, With Foam, etc.)	2500 feet hose, 3000 gallon drop tank, mark 3 pump, float pump, mini mark pump, mop up kit, assorted nozzles, and fittings
Special Moving Requirements: (Oversized Load, etc.)	Pintle hitch
Rates: Per Hour of Use w/Receiving State Supplying Fuel: Per Hour of Use w/Sending State Supplying Fuel: Per Mile w/Receiving State Supplying Fuel: Per Mile w/Sending State Supplying Fuel: Minimum Daily Charge Equipment: Transport Cost per Mile w/Receiving State supplying fuel: Transport Cost per Mile w/Sending State Supplying Fuel: Minimum Daily Charge for Transport: NOTE: List Operator Cost in Personnel Section.	\$100 day and replacement of lost or damaged equipment

**SOUTH CAROLINA FORESTRY COMMISSION
EQUIPMENT
2024 Rates**

Type:	Mechanic Truck
Make:	various
Special Equipment: (LGP, Plow Type, Blade Type, With Foam, etc.)	1 ½ ton truck with tools, crane, welder, air compressor
Special Moving Requirements: (Oversized Load, etc.)	None
Rates: Per Hour of Use w/Receiving State Supplying Fuel: Per Hour of Use w/Sending State Supplying Fuel: Per Mile w/Receiving State Supplying Fuel: Per Mile w/Sending State Supplying Fuel: Minimum Daily Charge Equipment: Transport Cost per Mile w/Receiving State supplying fuel: Transport Cost per Mile w/Sending State Supplying Fuel: Minimum Daily Charge for Transport: NOTE: List Operator Cost in Personnel Section.	 \$1.50/mile \$1.50/mile \$50/day

**SOUTH CAROLINA FORESTRY COMMISSION
EQUIPMENT
2024 Rates**

Type:	ATV 4-wheeler
Make:	Various
Special Equipment: (LGP, Plow Type, Blade Type, With Foam, etc.)	None
Special Moving Requirements: (Oversized Load, etc.)	None
Rates:	
Per Hour of Use w/Receiving State Supplying Fuel:	\$10.00/hour
Per Hour of Use w/Sending State Supplying Fuel:	\$10.00/hour
Per Mile w/Receiving State Supplying Fuel:	
Per Mile w/Sending State Supplying Fuel:	
Minimum Daily Charge Equipment:	2 hours/day
Transport Cost per Mile w/Receiving State supplying fuel:	
Transport Cost per Mile w/Sending State Supplying Fuel:	
Minimum Daily Charge for Transport: NOTE: List Operator Cost in Personnel Section.	

**SOUTH CAROLINA FORESTRY COMMISSION
EQUIPMENT
2024 Rates**

Type:	Helicopter bucket
Make:	Bambi
Special Equipment: (LGP, Plow Type, Blade Type, With Foam, etc.)	780 gallons foam injected. 2,000-gallon BambiMax 320-gallon
Special Moving Requirements: (Oversized Load, etc.)	None
Rates: Per Hour of Use w/Receiving State Supplying Fuel: Per Hour of Use w/Sending State Supplying Fuel: Per Mile w/Receiving State Supplying Fuel: Per Mile w/Sending State Supplying Fuel: Minimum Daily Charge Equipment: Transport Cost per Mile w/Receiving State supplying fuel: Transport Cost per Mile w/Sending State Supplying Fuel: Minimum Daily Charge for Transport: NOTE: List Operator Cost in Personnel Section.	No charge: receiving state is responsible for reimbursement of transportation cost and repair/replacement of any damage.

**SOUTH CAROLINA FORESTRY COMMISSION
EQUIPMENT
2024 Rates**

Type:	Firetrack	
Make:	Prinoth	
Special Equipment: (LGP, Plow Type, Blade Type, With Foam, etc.)	Tracked, Environmental cab unit with 700-gallon capacity slip on	
Special Moving Requirements: (Oversized Load, etc.)	None	
Rates: Per Hour of Use w/Receiving State Supplying Fuel:	\$75/hour	
Per Hour of Use w/Sending State Supplying Fuel:		
Per Mile w/Receiving State Supplying Fuel:		
Per Mile w/Sending State Supplying Fuel:		
Minimum Daily Charge Equipment:		2 hour/day
Transport Cost per Mile w/Receiving State supplying fuel:		
Transport Cost per Mile w/Sending State Supplying Fuel:		
Minimum Daily Charge for Transport:		
NOTE: List Operator Cost in Personnel Section.		

**SOUTH CAROLINA FORESTRY COMMISSION
AIRCRAFT
2024 Rates**

Type:	Fixed Wing
Make:	Cessna
Model:	185
Special Equipment:	None
Passenger Capacity (exclude pilot):	3
Load Capacity or Retardant Gallons:	N/A
Rate:	
Per Hour of Use w/Receiving State Supplying Fuel:	\$130 per hour
Per Hour of Use w/Sending State Supplying Fuel:	\$130 per hour
Minimum Daily Charge: NOTE: List Operator Cost in Personnel	2 hours per day
Section:	

**SOUTH CAROLINA FORESTRY COMMISSION
AIRCRAFT
2024 Rates**

Type:	Fixed Wing
Make:	Cessna
Model:	172 & T-41B
Special Equipment:	None
Passenger Capacity (exclude pilot):	3
Load Capacity or Retardant Gallons:	N/A
Rate:	
Per Hour of Use w/Receiving State Supplying Fuel:	\$115 per hour
Per Hour of Use w/Sending State Supplying Fuel:	\$115 per hour
Minimum Daily Charge: NOTE: List Operator Cost in Personnel Section:	2 hours per day

**SOUTH CAROLINA FORESTRY COMMISSION
PERSONNEL
2024 Rates**

NOTE: All Compact Personnel are guaranteed a Minimum of Eight Hours per Day

Qualifications:	
Standard Rate of Pay:	Salary plus benefits
Overtime Rate:	1 ½ times hourly rate for every hour over 40 in a work week
Per Diem Rate, if Food and Lodging are not Provided:	Food-\$50/day Lodging-actual cost not to exceed Federal Lodging rate

**SOUTH CAROLINA FORESTRY COMMISSION
EQUIPMENT
2024 Rates**

Type:	Command Post/Logistics Trailer
Make:	Various
Special Equipment: (LGP, Plow Type, Blade Type, With Foam, etc.)	20ft-42 ft Travel Trailer
Special Moving Requirements: (Oversized Load, etc.)	¾ ton or 1 ton Pickup
Rates: Per Day: Minimum Daily Charge Equipment: Transport Cost per Mile w/Receiving State supplying fuel: Transport Cost per Mile w/Sending State Supplying Fuel: Minimum Daily Charge for Transport: NOTE: List Operator Cost in Personnel Section.	\$250 \$500 See ¾ ton or 1-Ton pickup for transport costs

**SOUTH CAROLINA FORESTRY COMMISSION
EQUIPMENT
2024 Rates**

Type:	Mobile Command Trailer
Make:	Various
Special Equipment: (LGP, Plow Type, Blade Type, With Foam, etc.)	Generator
Special Moving Requirements: (Oversized Load, etc.)	Truck Tractor
Rates: Per Day:	\$500
Minimum Daily Charge Equipment:	\$500
Transport: NOTE: List Operator Cost in Personnel Section.	See Truck Tractor Rates

**SOUTH CAROLINA FORESTRY COMMISSION
EQUIPMENT
2024 Rates**

Type:	Mobile Command Post (Motor Home)
Make:	Various
Special Equipment: (LGP, Plow Type, Blade Type, With Foam, etc.)	Generator
Special Moving Requirements: (Oversized Load, etc.)	None
Rates: Per Day:	\$250
Minimum Daily Charge Equipment:	\$250
Transport Cost per Mile w/Receiving State supplying fuel:	\$3.00
Transport Cost per Mile w/Sending State Supplying Fuel:	\$3.00
Minimum Daily Charge for Transport: NOTE: List Operator Cost in Personnel Section.	

**TENNESSEE DIVISION OF FORESTRY
EQUIPMENT
2024 Rates**

NOTE: Receiving Units are responsible for repairing damaged equipment and sending States are responsible for routine maintenance

Type:	Dozer Type 3 and 4					
Make:	Various					
Special Equipment: (LGP, Plow Type, Blade Type, With Foam, etc.)	Standard or LGP, 6-way blade, rear lift plow, enclosed cab, blade/rear mounted winch depending on plow attachment					
Special Moving Requirements: (Oversized Load, etc.)	Requires Transport					
Rates:						
Per Hour of Use w/Receiving State Supplying Fuel:	<table border="1"> <tr> <td>Type 3</td> <td>Type 4</td> </tr> <tr> <td>\$125.00/hr.</td> <td>\$105.00/hr.</td> </tr> </table>	Type 3	Type 4	\$125.00/hr.	\$105.00/hr.	
Type 3	Type 4					
\$125.00/hr.	\$105.00/hr.					
Per Hour of Use w/Sending State Supplying Fuel:	<table border="1"> <tr> <td>Type 3</td> <td>Type 4</td> </tr> <tr> <td>\$125.00/hr.</td> <td>\$105.00/hr.</td> </tr> </table>	Type 3	Type 4	\$125.00/hr.	\$105.00/hr.	
Type 3	Type 4					
\$125.00/hr.	\$105.00/hr.					
Per Mile w/Receiving State Supplying Fuel:	N/A					
Per Mile w/Sending State Supplying Fuel:	N/A					
Minimum Daily Charge Equipment:	Equipment is charged based on the hours the assigned operator works or the operational period, whichever is greater. The exception being when in travel status to and from the receiving state, and then is based on the hours of actual travel time.					
Transport Cost per Mile w/Receiving State supplying fuel:	See Transport Rates					
Transport Cost per Mile w/Sending State Supplying Fuel:						
Minimum Daily Charge for Transport:						
NOTE: List Operator Cost in Personnel Section.	See Personnel Section					

**TENNESSEE DIVISION OF FORESTRY
EQUIPMENT
2024 Rates**

NOTE: Receiving Units are responsible for repairing damaged equipment and sending States are responsible for routine maintenance

Type:	Tractor Plow Type 3 and 4					
Make:	Various					
Special Equipment: (LGP, Plow Type, Blade Type, With Foam, etc.)	Standard or LGP, 6-way blade, rear lift plow, enclosed cab, blade/rear mounted winch depending on plow attachment					
Special Moving Requirements: (Oversized Load, etc.)	Requires Transport					
Rates:						
Per Hour of Use w/Receiving State Supplying Fuel:	<table border="1"> <tr> <td>Type 3</td> <td>Type 4</td> </tr> <tr> <td>\$125.00/hr.</td> <td>\$105.00/hr.</td> </tr> </table>	Type 3	Type 4	\$125.00/hr.	\$105.00/hr.	
Type 3	Type 4					
\$125.00/hr.	\$105.00/hr.					
Per Hour of Use w/Sending State Supplying Fuel:	<table border="1"> <tr> <td>Type 3</td> <td>Type 4</td> </tr> <tr> <td>\$125.00/hr.</td> <td>\$105.00/hr.</td> </tr> </table>	Type 3	Type 4	\$125.00/hr.	\$105.00/hr.	
Type 3	Type 4					
\$125.00/hr.	\$105.00/hr.					
Per Mile w/Receiving State Supplying Fuel:	N/A					
Per Mile w/Sending State Supplying Fuel:	N/A					
Minimum Daily Charge Equipment:	Equipment is charged based on the hours the assigned operator works or the operational period, whichever is greater. The exception being when in travel status to and from the receiving state, and then is based on the hours of actual travel time.					
Transport Cost per Mile w/Receiving State supplying fuel:	See Transport Rates					
Transport Cost per Mile w/Sending State Supplying Fuel:						
Minimum Daily Charge for Transport:						
NOTE: List Operator Cost in Personnel Section.	See Personnel Section					

**TENNESSEE DIVISION OF FORESTRY
EQUIPMENT
2024 Rates**

Type:	Transport
Make:	Various
Special Equipment: (LGP, Plow Type, Blade Type, With Foam, etc.)	N/A
Special Moving Requirements: (Oversized Load, etc.)	None
Rates:	
Per Hour of Use w/Receiving State Supplying Fuel:	N/A
Per Hour of Use w/Sending State Supplying Fuel:	N/A
Per Mile w/Receiving State Supplying Fuel:	\$3.00/mile
Per Mile w/Sending State Supplying Fuel:	\$3.00/mile
Minimum Daily Charge Equipment:	\$150/day
Transport Cost per Mile w/Receiving State supplying fuel:	N/A
Transport Cost per Mile w/Sending State Supplying Fuel:	N/A
NOTE: List Operator Cost in Personnel Section.	See Personnel Section

**TENNESSEE DIVISION OF FORESTRY
EQUIPMENT
2024 Rates**

Type:	Type 6 Engine
Make:	Various
Special Equipment: (LGP, Plow Type, Blade Type, With Foam, etc.)	Foam, winch, 4x4
Special Moving Requirements: (Oversized Load, etc.)	N/A
Rates:	
Per Hour of Use w/Receiving State Supplying Fuel:	\$65.00/hr.
Per Hour of Use w/Sending State Supplying Fuel:	\$65.00/hr.
Per Mile w/Receiving State Supplying Fuel:	\$N/A
Per Mile w/Sending State Supplying Fuel:	\$N/A
Minimum Daily Charge Equipment:	Equipment is charged based on the hours the assigned operators work or the operational period, whichever is greater. The exception being when in travel status to and from the receiving state, and then is based on the hours of actual travel time.
Transport Cost per Mile w/Receiving State supplying fuel:	
Transport Cost per Mile w/Sending State Supplying Fuel:	N/A
Minimum Daily Charge for Transport:	N/A
NOTE: List Operator Cost in Personnel Section.	N/A
	See Personnel Section

**TENNESSEE DIVISION OF FORESTRY
EQUIPMENT
2024 Rates**

Type:	Passenger vehicles: SUV, pickup truck, passenger van
Make:	Various
Special Equipment: (LGP, Plow Type, Blade Type, With Foam, etc.)	4x4, winch
Special Moving Requirements: (Oversized Load, etc.)	N/A
Rates: Per Hour of Use w/Receiving State Supplying Fuel:	N/A
Per Hour of Use w/Sending State Supplying Fuel:	N/A
Per Mile w/Receiving State Supplying Fuel:	\$1.00/mile
Per Mile w/Sending State Supplying Fuel:	\$1.00/mile
Minimum Daily Charge Equipment:	\$60.00
Transport Cost per Mile w/Receiving State supplying fuel:	N/A
Transport Cost per Mile w/Sending State Supplying Fuel:	N/A
Minimum Daily Charge for Transport:	N/A
NOTE: List Operator Cost in Personnel Section.	See Personnel Section

**TENNESSEE DIVISION OF FORESTRY
EQUIPMENT
2024 Rates**

Type:	All-Terrain Vehicles (ATV & UTV)
Make:	Various
Special Equipment: (LGP, Plow Type, Blade Type, With Foam, etc.)	4x4, winch
Special Moving Requirements: (Oversized Load, etc.)	N/A
Rates:	
Per Hour of Use w/Receiving State Supplying Fuel:	\$20.00/hr.
Per Hour of Use w/Sending State Supplying Fuel:	\$20.00/hr.
Per Mile w/Receiving State Supplying Fuel:	N/A
Per Mile w/Sending State Supplying Fuel:	N/A
Minimum Daily Charge Equipment:	\$40.00/day
Transport Cost per Mile w/Receiving State supplying fuel:	N/A
Transport Cost per Mile w/Sending State Supplying Fuel:	Cost of transport is dependent on the type of Vehicle or Hauling Unit used. See Vehicle or Hauling Unit for rate.
Minimum Daily Charge for Transport:	N/A
NOTE: List Operator Cost in Personnel Section.	See Personnel Section

**TENNESSEE DIVISION OF FORESTRY
PERSONNEL**

2024 Rates

NOTE: All Compact Personnel are guaranteed a Minimum of Eight Hours per Day

Qualifications:	All personnel
Standard Rate of Pay:	Salary plus benefits
Overtime Rate:	1 ½ times hourly rate for over 40 hrs./week.
Per Diem Rate, if food and lodging are not provided:	Current GSA rate schedule

**TEXAS A&M FOREST SERVICE
PERSONNEL RATES**

2024 Rates

1. Salary and wage costs shall be at the actual cost to the State of Texas.
 - a. Employees are required to bring back original Final OF-288. Will bill off signed CTRs if no Team is tracking.
2. State employees on federal assignments will be compensated as follows:
 - a. Overtime will be paid at one- and one-half times base pay for all state non-exempt (hourly) employees.
 - b. Overtime will be paid at one- and one-half times base pay for all state exempt (salaried) employees. when working on an incident out of state, and at the straight base pay rate when working within the state of Texas.
3. Transportation, meals, and lodging may be provided by the requesting agency. Per Diem will be reimbursed at the applicable state rate using the General Services Administration schedule. ***NOTE: All Compact Personnel are guaranteed a Minimum of Eight Hours per Day. Employees are required to bring back original Final OF-288 or signed CTRs.***

Qualifications:	Various NWCG and State qualified positions.
Standard Rate of Pay:	Actual hourly rates plus fringe benefits.
Overtime Rate:	1 ½ hourly rate over 40 hours per week.
Per Diem Rate, if food and Lodging are not Provided:	Federal per diem rate for the locality.

**TEXAS A&M FOREST SERICE
EQUIPMENT
2023 Rates**

NOTE: Equipment rates are wet and without personnel. Replacement parts and supplies will be at actual cost. Employees are required to bring back the Original OF-286 or signed Shift Tickets

	Per hour of Use w/Sending State Supplying Fuel:	Per Mile w/Sending State Supplying Fuel:	Minimum Guarantee:	Transport Cost per Mile w/Sending State Supplying Fuel:	Minimum Guarantee for Transport:
Dozer, Type 1 D6T/post 2021 D6 CAT	\$320.00		\$1280.00	\$4.75	\$200.00
Dozer, Type 2 D6N/post 2021 D5 CAT	\$185.00		\$740.00	\$4.75	\$200.00
Dozer, Type 3 D5K/post 2021 D3 CAT	\$165.00		\$660.00	\$4.00	\$150.00
Type 3Tractor Plow D5K/post 2021 D3 CAT	\$165.00		\$660.00	\$4.00	\$150.00
Motor Grader, Type 1	\$190.00		\$760.00	\$4.75	\$200.00
Engine, Type 3	\$90.00A	\$2.75	\$360.00		
Engine, Type 6	\$75.00A	\$1.50	\$300.00		
Pickup, 1/2 - 3/4 ton, SUV		\$0.75	\$50.00		

Pickup, 1 ton, Passenger Van		\$0.85	\$75.00		
Pickup, 1-1/4 ton to 1-3/4 ton		\$1.25	\$100.00		
Box Truck		\$2.75	\$125.00		
Truck Tractor, 5 ton		\$4.00	\$150.00		
Crew Buggy		\$2.75	\$340.00		
Truck, Mechanic	\$50.00	\$1.50	\$280.00		
Trailer, Technical Support			** , ***	*	*
Trailer, Command Post/Office			\$650.00, ***	\$2.50, *	\$150.00, *
ATV/UTV	\$15.00		\$45.00	*	*
Generator, 45 Kw	\$38.00		\$152.00	*	*
Generator, 80 Kw	\$42.00		\$168.00	*	*
Chipper, Trailer Mounted 15”	\$50.00		\$200.00	*	*
Mulcher, Type 3	\$125.00		\$500.00	*	*

* Rates depend on transport used.

**Logistical support trailer (\$100/daily), Small office with refrigeration (\$200/daily), Small office with refrigeration and satellite capabilities (\$300/daily).

***Actual costs of communication & internet services, and replacement of consumables.

A - Per hour of actual use. Daily guarantee during travel status. Mileage every day.

**VIRGINIA DEPARTMENT OF FORESTRY
EQUIPMENT
2024 Rates**

NOTE: Equipment rates are wet and without personnel. Receiving Units are responsible for repairing damaged equipment and, sending State is responsible for routine maintenance.

Type:	Tractor-plow units
Make:	John Deere 450/550 (G, H, J Models)
Special Equipment: (LGP, Plow Type, Blade Type, With Foam, etc.)	Angle Blades
Special Moving Requirements: (Oversized Load, etc.)	Truck Transport (10-wheeler)
Rates:	
Per Hour of Use w/Receiving State Supplying Fuel:	N/A
Per Hour of Use w/Sending State Supplying Fuel:	\$80/hr.
Per Mile w/Receiving State Supplying Fuel:	N/A
Per Mile w/Sending State Supplying Fuel:	N/A
Minimum Daily Charge Equipment:	2 hour minimum/day (\$160/day)
Transport Cost per Mile w/Receiving State supplying fuel:	N/A
Transport Cost per Mile w/Sending State Supplying Fuel:	\$1.50/mile
Minimum Daily Charge for Transport: NOTE: List Operator Cost in Personnel Section.	N/A

**VIRGINIA DEPARTMENT OF FORESTRY
EQUIPMENT**

2024 Rates – Mileage plus pumping time.

Type:	Type 6 Engine
Make:	Ford 450 4X4
Special Equipment: (LGP, Plow Type, Blade Type, With Foam, etc.)	Foam Unit
Special Moving Requirements: (Oversized Load, etc.)	N/A
Rates:	
Per Hour of Use w/Receiving State Supplying Fuel:	N/A
Per Hour of Use w/Sending State Supplying Fuel:	\$70/hr.
Per Mile w/Receiving State Supplying Fuel:	N/A
Per Mile w/Sending State Supplying Fuel:	\$.75/mile
Minimum Daily Charge Equipment:	2 hour minimum/day (\$140/day) pumping time, plus mileage
Transport Cost per Mile w/Receiving State supplying fuel:	N/A
Transport Cost per Mile w/Sending State Supplying Fuel:	N/A
Minimum Daily Charge for Transport:	N/A
NOTE: List Operator Cost in Personnel Section.	

**VIRGINIA DEPARTMENT OF FORESTRY
EQUIPMENT
2024 Rates**

Type:	¾ Ton 4X4 Pick-Ups
Make:	Various
Special Equipment: (LGP, Plow Type, Blade Type, With Foam, etc.)	50-gallon water tank w/aqua-duct pump & small foam unit
Special Moving Requirements: (Oversized Load, etc.)	N/A
Rates:	
Per Hour of Use w/Receiving State Supplying Fuel:	N/A
Per Hour of Use w/Sending State Supplying Fuel:	N/A
Per Mile w/Receiving State Supplying Fuel:	N/A
Per Mile w/Sending State Supplying Fuel:	\$.75/mile
Minimum Daily Charge Equipment:	N/A
Transport Cost per Mile w/Receiving State supplying fuel:	N/A
Transport Cost per Mile w/Sending State Supplying Fuel:	N/A
Minimum Daily Charge for Transport: NOTE: List Operator Cost in Personnel Section.	N/A

**VIRGINIA DEPARTMENT OF FORESTRY
EQUIPMENT
2024 Rates**

Type:	Mobile Command Van
Make:	Chevrolet C5500 Chassis
Special Equipment: (LGP, Plow Type, Blade Type, With Foam, etc.)	Generator, Satellite Internet Capable
Special Moving Requirements: (Oversized Load, etc.)	N/A
Rates:	
Per Hour of Use w/Receiving State Supplying Fuel:	N/A
Per Hour of Use w/Sending State Supplying Fuel:	N/A
Per Mile w/Receiving State Supplying Fuel:	N/A
Per Mile w/Sending State Supplying Fuel:	\$1.50/mile
Minimum Daily Charge Equipment:	\$250/day + Actual costs of telecommunications & internet services
Transport Cost per Mile w/Receiving State supplying fuel:	N/A
Transport Cost per Mile w/Sending State Supplying Fuel:	N/A
Minimum Daily Charge for Transport:	N/A
NOTE: List Operator Cost in Personnel Section.	

**VIRGINIA DEPARTMENT OF FORESTRY
EQUIPMENT
2024 Rates**

Type:	Miscellaneous Small Equipment
Make:	Various
Special Equipment: (LGP, Plow Type, Blade Type, With Foam, etc.)	Chainsaws; Fireline blowers; UTVs
Special Moving Requirements: (Oversized Load, etc.)	N/A
Rates:	
Per Hour of Use w/Receiving State Supplying Fuel:	N/A
Per Hour of Use w/Sending State Supplying Fuel:	\$5/hour; \$15/hour for UTV
Per Mile w/Receiving State Supplying Fuel:	N/A
Per Mile w/Sending State Supplying Fuel:	N/A
Minimum Daily Charge Equipment:	\$5/day; \$30/day for UTV
Transport Cost per Mile w/Receiving State supplying fuel:	N/A
Transport Cost per Mile w/Sending State Supplying Fuel:	N/A
Minimum Daily Charge for Transport: NOTE: List Operator Cost in Personnel Section.	N/A

**VIRGINIA DEPARTMENT OF FORESTRY
PERSONNEL
2024 Rates**

NOTE: All Compact Personnel are guaranteed a minimum of eight hours per day

Qualifications:	Various Qualified ICS positions
Standard Rate of Pay:	Virginia DOF personnel salary rates
Overtime Rate:	1 ½ time over 40 hours per week
Per Diem Rate, if Food and Lodging are not Provided:	Federal per diem rate for locality

**WEST VIRGINIA DIVISION OF FORESTRY
EQUIPMENT
2024 Rates**

NOTE: Receiving Units are responsible for repairing damaged equipment and, sending States are responsible for routine maintenance

Type:	¾ Ton 4X4 Pick-Ups
Make:	Various
Special Equipment: (LGP, Plow Type, Blade Type, With Foam, etc.)	100-to-280-gallon skid units, some with foam, hose reels with 100 to 200 feet hose
Special Moving Requirements: (Oversized Load, etc.)	N/A
Rates:	
Per Hour of Use w/Receiving State Supplying Fuel:	N/A
Per Hour of Use w/Sending State Supplying Fuel:	\$25 per hr. <200 gal, \$35 per hr. 200+ gallon
Per Mile w/Receiving State Supplying Fuel:	N/A
Per Mile w/Sending State Supplying Fuel:	GSA mileage rate
Minimum Daily Charge Equipment:	N/A
Transport Cost per Mile w/Receiving State supplying fuel:	N/A
Transport Cost per Mile w/Sending State Supplying Fuel:	N/A
Minimum Daily Charge for Transport: NOTE: List Operator Cost in Personnel Section.	N/A

**WEST VIRGINIA DIVISION OF FORESTRY
EQUIPMENT
2024 Rates**

Type:	Miscellaneous Small Equipment
Make:	Various
Special Equipment: (LGP, Plow Type, Blade Type, With Foam, etc.)	Chainsaws, leaf blowers, pole saws, Mark 3 pumps
Special Moving Requirements: (Oversized Load, etc.)	N/A
Rates:	
Per Hour of Use w/Receiving State Supplying Fuel:	N/A
Per Hour of Use w/Sending State Supplying Fuel:	\$2/hour, Mark 3 \$5/hour
Per Mile w/Receiving State Supplying Fuel:	N/A
Per Mile w/Sending State Supplying Fuel:	N/A
Minimum Daily Charge Equipment:	N/A
Transport Cost per Mile w/Receiving State supplying fuel:	N/A
Transport Cost per Mile w/Sending State Supplying Fuel:	N/A
Minimum Daily Charge for Transport: NOTE: List Operator Cost in Personnel Section.	

**WEST VIRGINIA DIVISION OF FORESTRY
EQUIPMENT
2024 Rates**

Type:	ATV, UTV
Make:	Various
Special Equipment: (LGP, Plow Type, Blade Type, With Foam, etc.)	UTV - 50-gal tank with pump
Special Moving Requirements: (Oversized Load, etc.)	N/A
Rates:	
Per Hour of Use w/Receiving State Supplying Fuel:	N/A
Per Hour of Use w/Sending State Supplying Fuel:	\$3/hour
Per Mile w/Receiving State Supplying Fuel:	N/A
Per Mile w/Sending State Supplying Fuel:	N/A
Minimum Daily Charge Equipment:	N/A
Transport Cost per Mile w/Receiving State supplying fuel:	N/A
Transport Cost per Mile w/Sending State Supplying Fuel:	N/A
Minimum Daily Charge for Transport: NOTE: List Operator Cost in Personnel Section.	N/A

**WEST VIRGINIA DIVISION OF FORESTRY
PERSONNEL
2024 Rates**

NOTE: All Compact Personnel are guaranteed a minimum of eight hours per day

Qualifications:	Various NWCG and state qualified positions
Standard Rate of Pay:	Actual hourly rates plus fringe (approx. \$30/hr. average)
Qualifications:	INVF with bloodhound
Standard Rate of Pay:	Actual hourly rate plus fringe, 75/day for bloodhound, actual cost investigative supplies
Overtime Rate:	1 ½ hourly rate over 40 hours per week
Per Diem Rate, if Food and Lodging are not Provided:	Federal per diem rate for locality

APPENDIX G**SOUTHERN AREA WILDFIRE INVESTIGATION TASK FORCE
OPERATIONAL PLAN**

PURPOSE: The purpose of the Southern Area Wildfire Investigation Task Force is to permit states to share their law enforcement and investigative resources so that they can continue to perform in a professional and efficient manner during periods of high fire occurrence which may overwhelm their existing capabilities.

Complex arson cases, major incidents, or periods of extreme fire conditions may cause state forestry investigative resources to become exhausted or overwhelmed to the point that they can no longer manage investigations effectively.

In order to maintain effective and efficient investigations, the Southern Area fire and law enforcement managers need the opportunity to utilize additional resources to supplement their existing state investigators.

This memorandum is intended to describe how these resources are to be ordered, qualified, and how reimbursements costs will be handled.

AUTHORITY: The mobilization plan is authorized under the Southeastern Interstate Forest Fire Protection Compact and the South Central Interstate Forest Fire Protection Compact.

OBJECTIVES:

- Provide for an orderly, cost-efficient method of providing aid to requesting Compact states.
- Ensure aid can be obtained rapidly.
- Establish a listing of fire investigation resources.
- Establish qualification standards for fire investigation resources.
- Establish a system to enable resources which are ordered to assist a Compact state to have law enforcement powers within the ordering state.

WILDFIRE INVESTIGATION TASK FORCE COORDINATOR: A Wildfire Investigation Task Force (WITF) Coordinator will be named and shall be one of the Southern Area Law Enforcement Chiefs. This position will rotate on a two-year basis. A Deputy Coordinator may be chosen from among the Compact states.

MUTUAL AID PROCEDURES

PREMOBILIZATION: Each Compact state will furnish the WITF Coordinator with a list of qualified resources as outlined in this agreement by January 1 of each year, including any reimbursement costs not already specified in the Compact.

Qualifications: Each receiving state agrees to accept the qualifications of each sending state as to qualifications of resources. Addendum A attached to this document will specify suggested training and qualifications of investigative resources, as well as the Task Force Teams.

MOBILIZATION

Activation: Upon notification, the WITF Coordinator will advise the Compact Law Enforcement Chiefs that a request has been made and provide the LE Chiefs with any applicable updates.

Aid Request: Requesting State will contact the WITF Coordinator outlining its needs as to personnel, equipment, and other support. A compact resource(s) order will be created in IROC by the requesting state for the needed resources.

Dispatch: The WITF Coordinator will contact the Compact states best able to meet the request. The WITF Coordinator will work with the receiving state and the sending agency to coordinate, times, places, and length of service.

Pay Rates: Personnel and equipment reimbursements will be at the current rates established in the Compact by the respective states.

Food and Lodging: These will be provided by the receiving state unless otherwise specified. The sending state will be reimbursed for per diem while resources are traveling to and from the incident.

Court: The requesting state shall pay all personnel, equipment, food, and lodging costs for any investigators required to return for court appearances arising out of investigations performed under this agreement.

Law Enforcement and Arrest Powers: The receiving state will clearly spell out in the Investigative Action Plan how law enforcement arrests, search warrants, and police powers are to be handled.

Firearms: If the receiving state restricts carrying of firearms by the sending states resources, that information will be provided to the sending state **before** the resource order is filled.

DEMOBILIZATION

Release Priority: Out of State personnel should be released as soon as reasonable after the investigative functions have been completed, while still complying with their agency travel and R&R policies. The WITF Coordinator will be notified when the release is imminent and when accomplished.

Reimbursement Vouchers: The sending state will send the receiving state reimbursement vouchers within 30 days after the return of personnel.

Narrative Report: Both the sending and receiving states will send a written critique on all phases of their part of the mutual aid operation to the WITF Coordinator. This report will serve as supporting material for incident reviews. The WITF Coordinator will prepare a written report of all findings including recommendations for future operations. This report will be distributed to all participating Law Enforcement Chiefs and State Foresters.

Addendum A

The Southern Area Wildfire Investigation Task Force will consist of Individual Qualified Investigators and Task Force Teams. The Teams will consist of the positions described below and may be ordered as a Team. Single resources may be ordered on an as-needed basis, with or without a Team callout. Trainees will be encouraged in an effort to maintain a qualified field of resources.

Applications for resources will be received and approved by the Wildfire Investigation Task Force Coordinator, with input from the Law Enforcement Chiefs and other Team Members. Teams will be organized so as not to place an undue burden on the resources of any one agency. Teams may coordinate, train, and meet as needed to maintain a cohesive and effective state of readiness.

WILDFIRE INVESTIGATION TASK FORCE TEAM

Task Force Commander – NWCG FI-210/FI-310, Qualification as an INVF and INVL, Law Enforcement Experience, Previous Task Force Assignment.

Operations (Lead Investigator) - NWCG FI-210/FI-310, Qualification as an INVF and INVL, Law Enforcement Experience.

Planning – NWCG FI-210/FI-310, Qualification as an INVF and INVL.

Origin and Cause Team (A two investigator team) – NWCG FI-210, Qualification as an INVF.

Interview Team (A two investigator team) – Law Enforcement Experience, Extensive Interview Skills and Training.

ADDITIONAL SINGLE RESOURCES

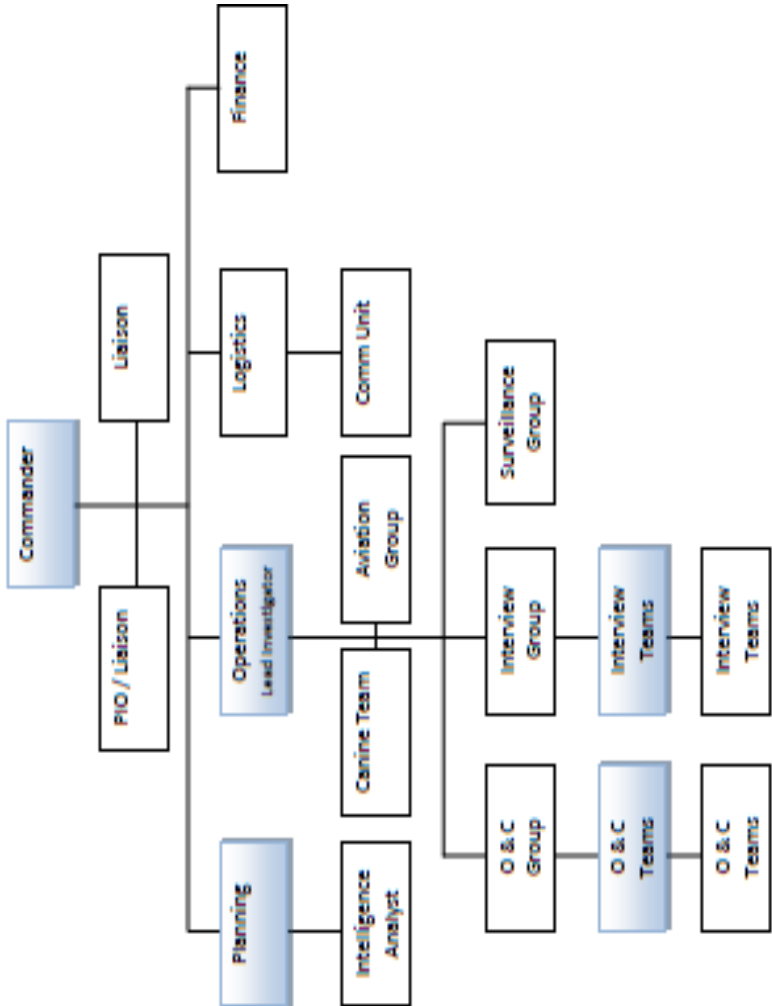
Wildland Fire Investigation Canine (Canine and Handler) - NWCG FI-210, Qualification as an INVF/CINV, Canine Tracking Certification.

Technical/Surveillance Specialist – Law Enforcement Experience, Extensive Training/Skills in Technology and Surveillance Methods.

Intelligence Analyst – Extensive Training and Experience in Behavior Analysis, Geospatial Application and Analysis.

Other Resources - Additional Resources such as PIO, Logistics, Finance, Aviation, Communications, Legal, Evidence Technician, Administrative Support, etc. may be provided internally or through requests depending on the complexity of the investigation. Those resources will be requested in accordance with the Southern Compact.

Addendum B



Addendum C

The Southern Area Wildfire Investigation Task Force Teams will provide the following for each assignment.

Delegation of Authority – The requesting agency shall provide any requested resources with a delegation of authority as soon as possible upon arrival. The delegation should include the legal authority and restrictions, financial authority and restrictions, reporting requirements, priorities, plans for evaluation, etc., and be attached to the Investigative Action Plan. The delegation shall be updated and extended as deemed necessary.

Investigative Action Plan – An investigative action plan should be developed at the time that a Team or any fire investigation resource is requested. The plan should outline the goals, objectives, and tactics of the assignment. It should follow the basic layout of Addendum D.

Daily Updates – Daily updates will be provided to the Law Enforcement Chief of the requesting agency. Due to the sensitivity of the mission, the Team will operate independent of the traditional ICS of an ongoing incident. The task force commander or designee shall try to attend any ongoing incident briefings.

Complete Case Files – All investigative actions will be properly documented prior to the demobilization of a resource. The Team IC will ensure that all resources have completed necessary paperwork prior to their release from the assignment.

After Action Report – The Team IC will provide an after-action report to the Law Enforcement Chief of the requesting agency and the Wildfire Investigation Task Force Coordinator, which identifies the accomplishments of the Team during the assignment, as well as any needs for improvement.

Individual Performance Evaluations – The Team supervisors will provide performance evaluations for all of their assigned staff using approved ICS forms.

Addendum D Investigative Action Plan

The investigative action plan is a fluid document that should be produced before or as soon as the Southern Area Wildfire Investigation Task force is mobilized. Portions may change during deployment, but it will provide all parties of the investigation a framework for reference, for briefings, and will begin the documentation process. It should include the following items at minimum.

A. Background

A brief description of the current situation including the fire history, geography, fuel types, threats/values, etc. It should include the events that led up to the need to request additional resources through the Southern Area Wildfire Investigation Task Force. Maps of the operational area will be provided to all members of the task force.

B. Objectives

A brief description of the goals of the investigation. Generalized information about tactics that will be deployed but should not compromise the integrity of the overall goals. Milestones for the deployment need to be stated, such as what factors will affect the direction, tactics, demobilization, etc. of the task force.

C. Jurisdiction and Authority

This section will identify the primary agency responsible for the investigation, all participating agencies, and the agency that will prosecute any criminal cases. The authority of each of the resources provided by the participating agencies will be described. Arrest/Booking procedures and jail locations/contact information will be included. Applicable laws shall be provided to all members of the task force and access to all other's laws provided if needed.

D. Organization

This section shall describe the command structure of the task force, which will be independent of any ongoing incident ICS due to the sensitivity of the objectives.

E. Case Management

The documentation and reporting requirements of all aspects of the task force, including format, approvals, security, evidence collection and storage, daily activity logs, etc. will be explained and provided as applicable.

F. Communications

A brief communications plan will be attached and may include the ICS 205 form. Mobile and traditional telephone numbers shall be attached and updated as needed. Secure communications and frequencies may be left out of the incident IAP.

G. Medical

A medical plan shall be included or attached and should contain all information required in ICS 206 form.