



TRUST BUILT BY THE MILE.

GENERAL HS 2

LONG HAUL, HIGHWAY STEER POSITION



- › LONG DISTANCE HAULS
- › MANY MILES TO REMOVAL
- › FUEL-EFFICIENT
- › COMFORTABLE RIDE



GENERAL TIRE

GENERAL TIRE. SINCE 1915

GENERALTIRETRUCK.COM



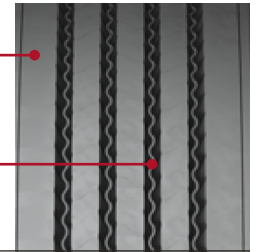
SMARTWAY® VERIFIED

LONG HAUL,
HIGHWAY STEER POSITION

GENERAL HS 2

NEW TREAD FOOTPRINT DELIVERS
SIGNIFICANT WEAR IMPROVEMENT.
50% BETTER MILEAGE *

ADVANCED TREAD COMPOUND PROVIDES
LOW ROLLING RESISTANCE FOR
OPTIMAL FUEL EFFICIENCY



FEATURES & BENEFITS

Technologically advanced tread compound contributes to low rolling resistance for **OPTIMUM FUEL EFFICIENCY.**

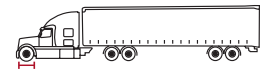
Improved footprint delivers significant wear improvements for increased removal miles. **MORE THAN 50% MILEAGE IMPROVEMENT.***

Shoulder and decoupler groove modifications add **ENHANCED DURABILITY FOR RESISTANCE TO CUTS & TEARS.**

Casing platform delivers **OPTIMAL PERFORMANCE & MAXIMUM RETREADABILITY.**

Enhanced bead to belt package increases casing durability for **MAXIMUM RETREADABILITY.**

**IMPROVEMENT VERSUS PREDECESSOR GENERAL HS.*



TECHNICAL DATA

TIRE SIZE	LOAD RANGE	ARTICLE NUMBER	TREAD DEPTH (32NDS)	MAX. SPEED (MPH)	STATIC LOADED RADIUS		OVERALL INFLATED DIAMETER		OVERALL INFLATED WIDTH		LOADED SECTION WIDTH		APPROVED RIM(S)	MIN. DUAL SPACING		REVS PER UNIT		TIRE WEIGHT		MAX. LOAD @ INFLATION	
					IN	MM	IN	MM	IN	MM	IN	MM		IN	MM	IN	MM	MI	KM	LBS	KG
11R22.5	H	05112020000 *05653890000*	19	75	19.5	495	41.5	1054	11.2	283	12.2	309	8.25, 7.50	12.5	318	499	310	118	53	6610 / 120 (3000 / 830)	6005 / 120 (2725 / 830)
295/75R22.5	H	05112030000 *05653900000*	19	75	18.8	477	40.3	1024	11.2	284	12.2	310	8.25, 9.00	12.5	318	514	319	115	52	7160 / 120 (3250 / 830)	6610 / 120 (3000 / 830)
11R24.5	H	05112040000 *05653910000*	19	75	20.4	518	43.5	1105	11.2	285	12.3	320	8.25, 7.50	12.5	318	476	296	126	57	7160 / 120 (3250 / 830)	6610 / 120 (3000 / 830)
285/75R24.5	H	05112050000 *05653920000*	19	75	19.5	495	41.5	1055	10.9	276	12.0	305	8.25, 7.50 9.00	12.5	318	498	310	119	54	6780 / 120 (3075 / 830)	6175 / 120 (2800 / 830)

TUBELESS TIRES ON 15 DEGREE DROP CENTER RIMS

Note - Rim listed first is the measuring rim. ** = Intelligent Tire Article #. Minimum Dual Spacing calculated without chains. # - Exceeding the lawful speed limit is neither recommended nor endorsed. Overall widths will change 0.1 inch (2.5 mm) for each 1/4 inch change in rim width. Minimum dual spacing should be adjusted accordingly. Continental Tire the Americas, LLC. reserves the right to change product specifications at any time without notice or obligations. Please consult rim manufacturers load and inflation limits. Never exceed rim manufacturers limits without permission of component manufacturer.

Whether your operation is highway, regional, urban or on/off-road, **you can trust General Tire to deliver commercial truck tires that work as hard as you do.**

GENERALTIRETRUCK.COM