

The Texas Governor's Committee on People with Disabilities
April 28, 2021

Art Works!: Careers in the Visual Arts and People with Disabilities

a panel session with

John Bramblitt, Sam Eiler,
Grant Manier, and Nancy Wood





SAGE
studio

A STUDIO & GALLERY
FOR ARTISTS
WITH DISABILITIES



SAGE studio

916 Springdale Road FT-2

Austin, TX 78702

Email: info@sagestudioatx.com





www.artsparktx.org

Artist of the Year Award
Nominations Deadline
April 30, 2021
info@artsparktx.org



**OCTOBER | NATIONAL DISABILITY
EMPLOYMENT AWARENESS MONTH
2014**

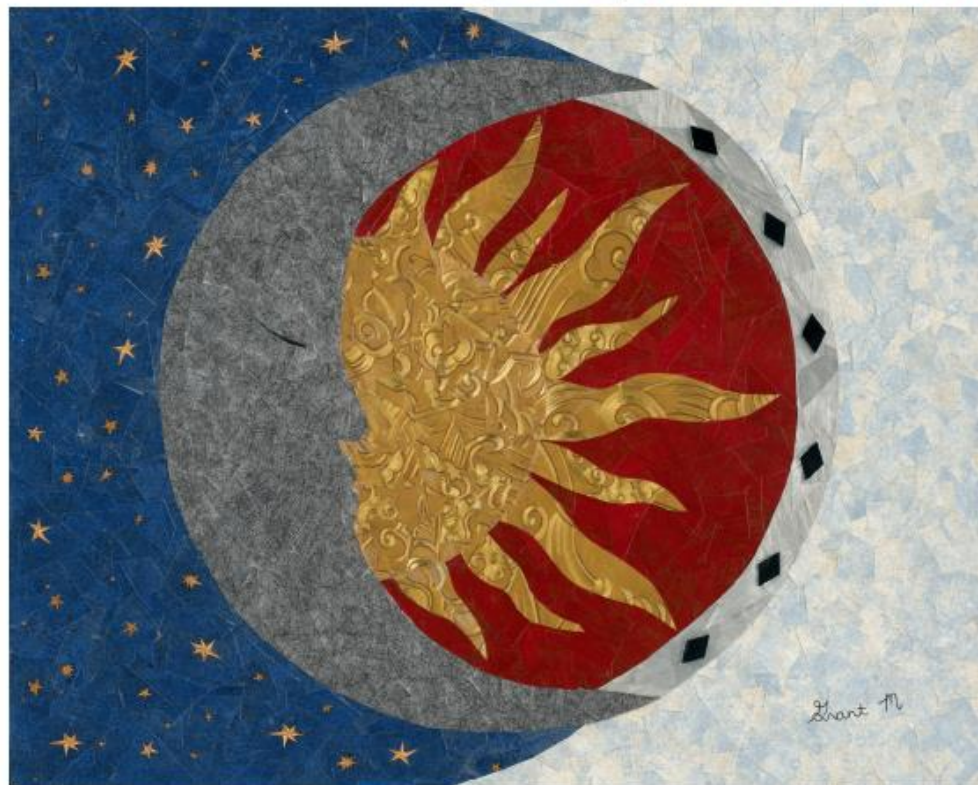
**EXPECT.
EMPLOY.
EMPOWER.**



State of Texas
Department of
Public Safety
Disability Unit
http://www.dps.texas.gov/disability



TEXAS
Department of Assistive
& Rehabilitative Services
www.dars.state.tx.us # 800-638-5113



GRANT MANIER
SPRING, TEXAS
WWW.GRANTS.COART.COM

MY NAME IS GRANT MANIER. I'M AN ECO-ARTIST, AND I HAVE AUTISM. AT AN EARLY AGE I DEVELOPED A PASSION FOR PAPER. BY MY EARLY TEENS, I BEGAN RECYCLING AND COLLECTING PAPER AS AN AFFORDABLE WAY TO CREATE ECO-ART. I RECYCLE THOUSANDS OF TORN OR CUT PIECES OF PAPER; I'M A PAINT-BY-PAPER ARTIST. I USE PAPER TO HELP SOOTHE MY ANXIETIES AND FEARS. I WISH TO TEACH THE WORLD ABOUT THE AMAZING GIFTS THAT PEOPLE WITH DISABILITIES HAVE INSIDE OF THEM. HAVING AUTISM HAS NOT STOPPED ME; IT HAS GIVEN ME THE OPPORTUNITY TO INSPIRE OTHERS TO BELIEVE IN THEMSELVES, EVEN IF THEIR BEHAVIOR SEEMS 'OUT-OF-SYNC OR QUIRKY' TO OTHERS. BEING AN ECO-ARTIST ALLOWS ME TO TEACH THE IMPORTANCE AND CREATIVITY BEHIND ENVIRONMENTAL RESPONSIBILITY. I PRESENT AT SCHOOLS, CONFERENCES AND EVENTS. HAVING A JOB IS AN OVERALL SENSE OF SATISFACTION AND PRIDE.

"IT'S NOT WHAT WE CAN'T DO... IT'S WHAT WE CAN DO THAT MAKES THE DIFFERENCE."

NATIONAL DISABILITY EMPLOYMENT AWARENESS MONTH 2013



JOHN BRAMBLETT IS AN ARTIST LIVING IN DENTON, TEXAS, AND IS THE AUTHOR OF SHOUTING IN THE DARK, HIS STORY OF LOSING HIS SIGHT AND HIS PURSUIT OF ART, WHICH RECEIVED THE 2013 BARBARA JORDAN MEDIA AWARD. JOHN LOST HIS EYESIGHT DUE TO COMPLICATIONS FROM EPILEPSY AND HAS BEEN COMPLETELY BLIND SINCE 2001. HIS PAINTING TECHNIQUE CENTERS AROUND TOUCH TO REPLACE WHAT THE EYES ACCOMPLISH FOR SIGHTED ARTISTS. JOHN DRAWS USING RAISED LINES THAT CAN BE FELT AND MIXES COLOR USING TEXTURES TO DIFFERENTIATE EACH COLOR. IN ADDITION TO HIS STUDIO WORK, JOHN HAS TAUGHT WORKSHOPS TO THOUSANDS OF CHILDREN AND ADULTS ALL OVER THE COUNTRY. HIS WORKSHOPS ARE ALWAYS FREE AND ALL-INCLUSIVE. HE CURRENTLY WORKS AS A CONSULTANT FOR MUSEUMS IN DEVELOPING WORKSHOPS THAT ARE DESIGNED TO INCLUDE EVERYONE, NO MATTER THEIR ABILITY OR DISABILITY. JOHN FEELS THAT ART IS WHAT HELPED HIM GET HIS LIFE BACK AFTER HE LOST HIS SIGHT AND THAT EVERYONE, WITH A DISABILITY OR NOT, SHOULD HAVE ACCESS TO ART AND ALL OF THE BENEFITS THAT IT BRINGS TO A PERSON'S LIFE.

BECAUSE WE ARE EQUAL TO THE TASK



Texas Governor's
Commission
on People with
Disabilities
<http://www.tncc.com>



Developed by
Apple Specially Advertising
www.apple.com/specialty



NATIONAL DISABILITY EMPLOYMENT AWARENESS MONTH *October 2017*



Nancy June Wood dedicates "Arise, Shine!" to awareness of mental illness. Dr. Wood has a severe hearing loss and experienced mental illness during a difficult period in her life. Her art embodies the theme "Inclusion Drives Innovation" for 2017's National Disability Employment Awareness Month.

At the age of 36, Dr. Wood found herself alone, destitute, unemployed, and on the verge of homelessness with no family or friends to turn to. "After treatment I started over and built a new life full of joy and positive relationships. Making art is a constant inspiration in my life. As I reflected on what the future might bring, I thought of Andrew Wyeth's famous painting Christine's World. I redrew the figure in Photoshop ... added some digital photos of skies ... and made edits in color and texture. After viewing the completed image, I began to feel more optimistic (and) from that point on, every time I viewed the image I felt confident and empowered. I hope it will have the same effect on other viewers."

#TXHireAbility

www.TXHireAbility.texasworkforce.org

Artist:
Nancy J. Wood, M.Ed., Ph.D.
<http://nancyjwood.com>



Governor's Committee on People with Disabilities
www.gov.texas.gov/organization/disabilities

Design: donated by
Apple Specialty Advertising
www.appleadvertising.com

Thank You!

- John Bramblitt
<https://bramblitt.com/>
- Sam Eiler
<https://www.sagestudioatx.com/sam-eiler>
- Grant Manier
<https://jigsawgrant.com/grant-the-artist>
- Nancy Wood
www.nancyjwoodartist.com

