

A Seat At the Table

School nurses are the health experts within their school communities, bridging health and education. School nurses can bring their understanding of the impact of social determinants of health, mental and social well-being, behavioral health, quality improvement, community and public health etc. to school policy and programs, if they are invited to the table.

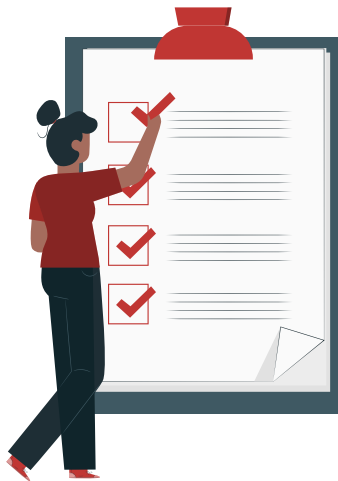
Here are the current school-level committees where school nurses (RN/LPN/LVN) are having an impact:



87.5%

IEP/504-School Representation

- School nurses must have the opportunity to attend any IEP or 504 meeting for students with known or potential health concerns. School nurses inform accommodations that affect or are affected by student health.



52.0%

Safety Committee

- School nurses play a critical role in school connectedness, which is a key factor in safe and supportive schools. As school nurses often provide care for injuries and accidents after they occur at school, school nurses can also provide insight into preventing future events.

51.0%

Attendance Committee

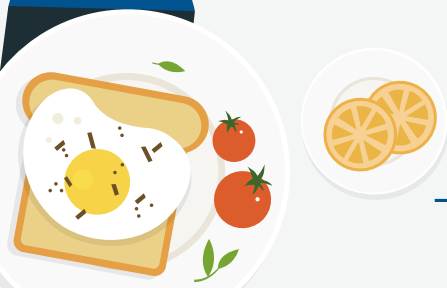
- School nurses play a critical role in identifying those factors that may contribute to chronic absenteeism and provide case management related to a student's health.



57.9%

School Health/Wellness Advisory-School Representation

- Each local education agency participating in the National School Lunch Program and/or School Breakfast Program must develop a wellness policy. The USDA Local Wellness Policy Final Rule requires schools to permit school health professionals (school nurses) to participate in the development, implementation, review, and updating of local wellness policies.



When at the table: *Who's Listening?*

School nurses bring the voice of health to an education setting. And often, they are the only health professional at the school. That can be lonely and challenging to navigate—as the connection between health and learning is not always well understood by non-nurses in the school. **Only 48.1%** of respondents felt they were understood and respected by their staff colleagues a majority of the time. **Only one out of four** reported satisfaction with parental support.





40.6%

Other Educational Support Committees

- School nurses are system-level thinkers. They have a specific scope of practice that includes collaborating with other student support specialties. Being a part of interdisciplinary committees such as mental health services teams allows school nurses to see school-wide challenges through a unique school health lens.

30.2%

Multi-Tiered System of Supports (MTSS)

- School nurses can use health office visit and condition data to identify students in need of targeted or individualized support. School nursing interventions can be an important support offered in MTSS in conjunction with academic support.

19.3%

Transportation

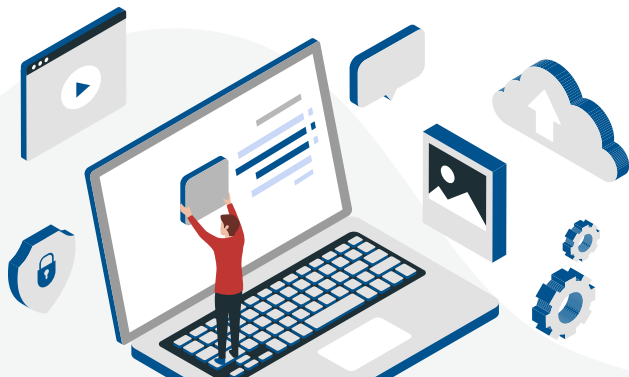
- Schools are required to transport students with health concerns, many with potentially life-threatening conditions with emergencies that could arise during bus rides. School nurses can advise on safe transportation for all children, including those with specific health care needs.



9.3%

Technology Committee

- As a user of school technology, consider the needs of school nurses and their HIPAA/FERPA compliant documentation needs. The data gathered by school nurses using technology can be used for early identification of students with learning and health concerns and early intervention to prevent learning loss. School nurses are also important team members for assessing and addressing student technology use and cyberbullying.



12.9% Other

