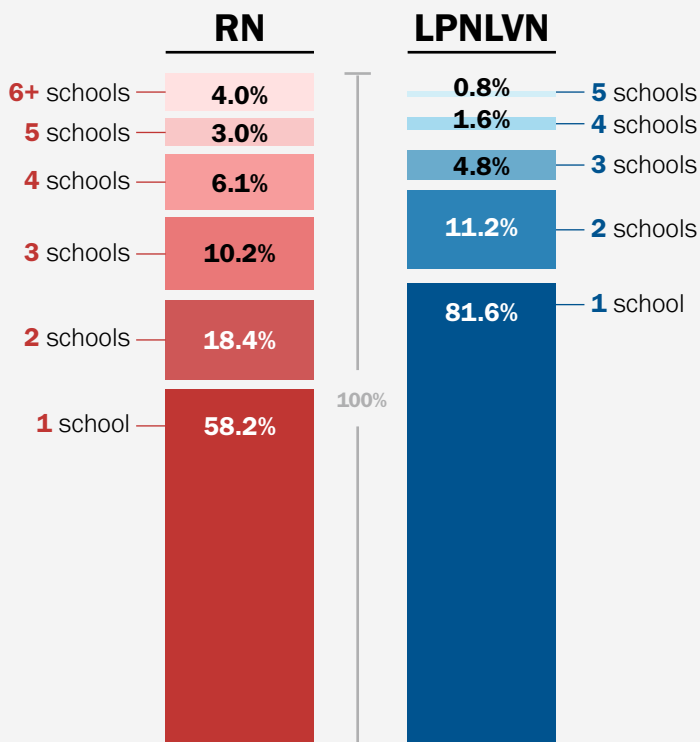


School Nursing Practice

While NASN advocates for **at least one full-time school nurse (RN) in every school** to provide for the health and safety needs of students and staff, the reality is many school nurses are assigned to multiple schools and must rotate among them.

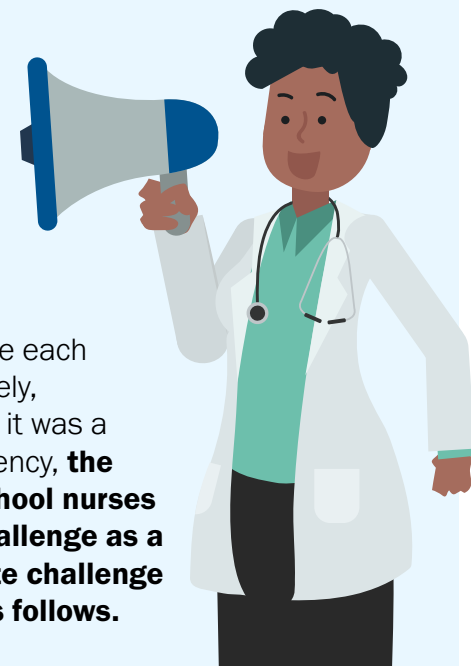


Nursing licensure and credentials vary. The numbers on this infographic reflect all who self-reported as school nurses, including RNs and LPNs/LVNs. Only RNs are able to conduct nursing assessments, use nursing judgment in creation of nursing diagnoses, and develop or modify nursing plans of care. LPN/LVNs must be under the supervision of an RN and may contribute to nursing assessment and planning of care.

Most challenging factors facing school nursing efficiency:

When given a list of common challenges, and asked to select the most challenging to their work, school nurses identified the following top three challenges:

- #1** Number of students with social/emotional/environmental issues (36.4%)
- #2** Number of schools I cover (18.9%)
- #3** Number of students in my school(s) (13.9%)



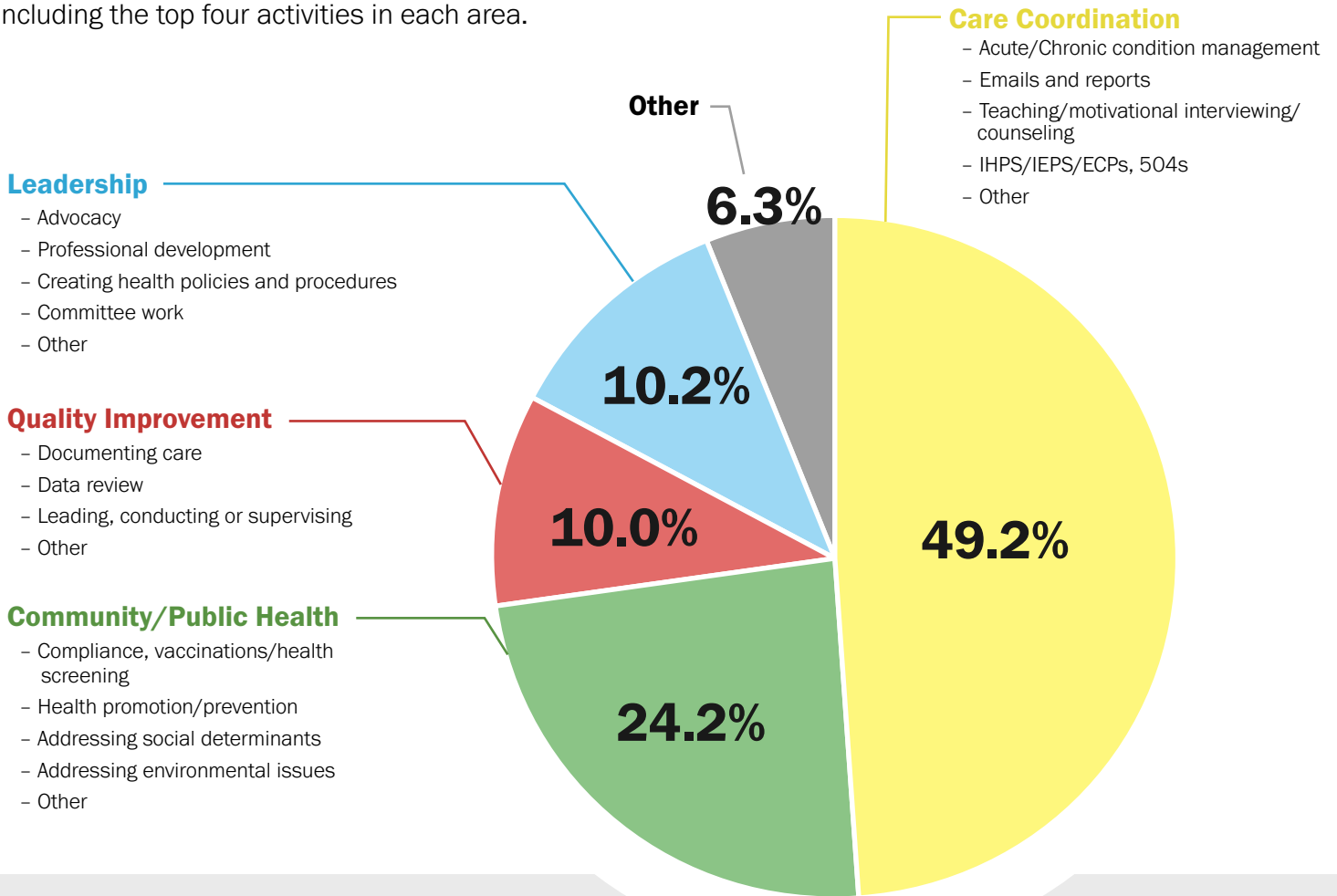
When asked to rate each challenge separately, regarding whether it was a challenge to efficiency, **the percentage of school nurses who rated the challenge as a major or moderate challenge to efficiency is as follows.**

Major/Moderate Challenge to Efficiency	RN	LPN/LVN
Number of schools assigned to	29.1%	10.8%
Number of students	38.7%	26.9%
Students with high medical acuity	33.4%	16.5%
Social/emotional/environmental issues	67.9%	43.7%
Medical acuity among students	32.3%	17.7%
Interactions with family	45.6%	31.3%
English language learners	26.9%	24.6%
Students eligible for free/reduced lunch	23.1%	13.7%



How School Nurses Spend Their Day

Below is a breakdown of how school nurses (RN) spend their time, including the top four activities in each area.



These results were obtained during a 2021 study. With a 36.8% survey response rate and variable response rate per survey question, 2,568 respondents reported to be a public school nurse. Of these respondents, 2,392 provided information regarding licensure, with 2,141 reporting as RN and 251 reporting as LPN/LVN.