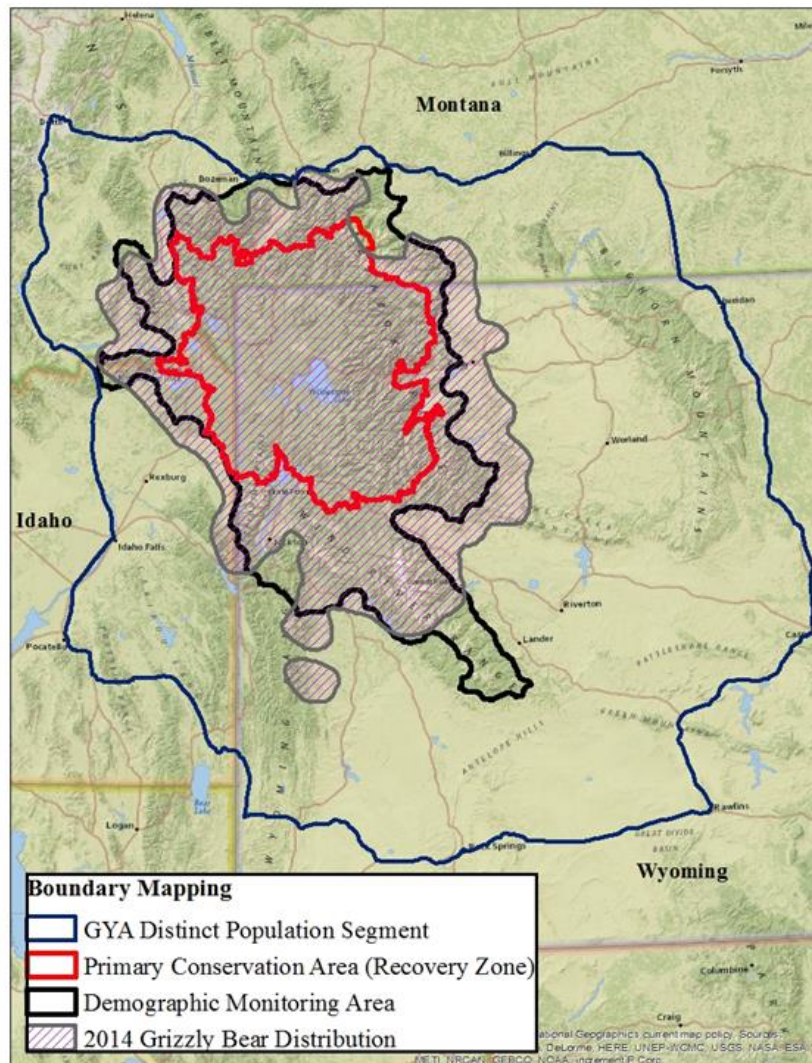


PROCLAMATION OF THE
IDAHO FISH AND GAME COMMISSION
RELATING TO THE LIMIT OF THE TAKE OF GRIZZLY BEAR
IN THE GREATER YELLOWSTONE ECOSYSTEM

This is an official proclamation of the Idaho Fish and Game Commission for the take of wildlife, with the full force and effect of law pursuant to Idaho Code Section 36-105.

This proclamation does not declare any season open for take of grizzly bear in Idaho; the season for take of grizzly bear in Idaho remains closed until and unless the Commission opens a season. This proclamation establishes limits on the take of grizzly bear in the Greater Yellowstone Ecosystem, to apply if the Commission opens a season for take of grizzly bear.

1. The following definitions apply to this proclamation:
 - (a) "Demographic Monitoring Area" (DMA) means the area that includes approximately 19,279 mi² in area, as approximately depicted in the map below. The DMA is based on suitable grizzly bear habitat.



- (b) “Discretionary mortality” means human-caused grizzly bear mortality over which the Commission and the Department have discretionary authority, such as management removals and regulated harvest.
 - (c) “Greater Yellowstone Ecosystem” means that portion of Idaho east of Interstate Highway 15 and north of U.S. Highway 30 and portions of Montana and Wyoming, as depicted in the above map, a portion of which is the DMA.
 - (d) “Non-discretionary mortality” means grizzly bear mortalities over which the Commission and Department have no discretionary authority, such as naturally occurring mortality, or human-caused mortality such as illegal shootings, defense-of-human-life shootings, and vehicle collisions.
 - (e) “Tri-State MOA” means the 2016 Memorandum of Agreement among the agencies of Idaho, Montana, and Wyoming that establishes coordinated management of the grizzly bear population in the Greater Yellowstone Ecosystem, as available at <https://idfg.idaho.gov/conservation/grizzly-bear>.
2. If the grizzly bear population estimate, using the model-averaged Chao2 estimate, for the DMA falls below 600, all discretionary mortality in the DMA shall be suspended, except as required to protect human safety.
 3. If the Commission opens a take season for grizzly bear, such season will immediately close if and when take reaches limits set by the Commission.
 4. If the Commission opens a season for take of grizzly bear, such season will not include adult grizzly bear accompanied by young, or young grizzly bear accompanied by adult grizzly bear.
 5. If a total mortality limit for any age/sex class, determined as set forth in the Tri-State MOA, is met in a calendar year, within twenty-four (24) hours, any open season shall close for grizzly bear in the DMA, and no season shall open for grizzly bear in the DMA, for the remainder of the calendar year.
 6. Any grizzly bear hunting mortality that exceeds total mortality limits within the DMA, determined as set forth in the Tri-State MOA, in any calendar year will be subtracted from the total mortality limit for the respective specific age/sex class within the DMA for the following year.

ADOPTED AUGUST 8, 2016.