



International
Labour
Organization



Regional Initiative
Latin America and the Caribbean
Free of Child Labour

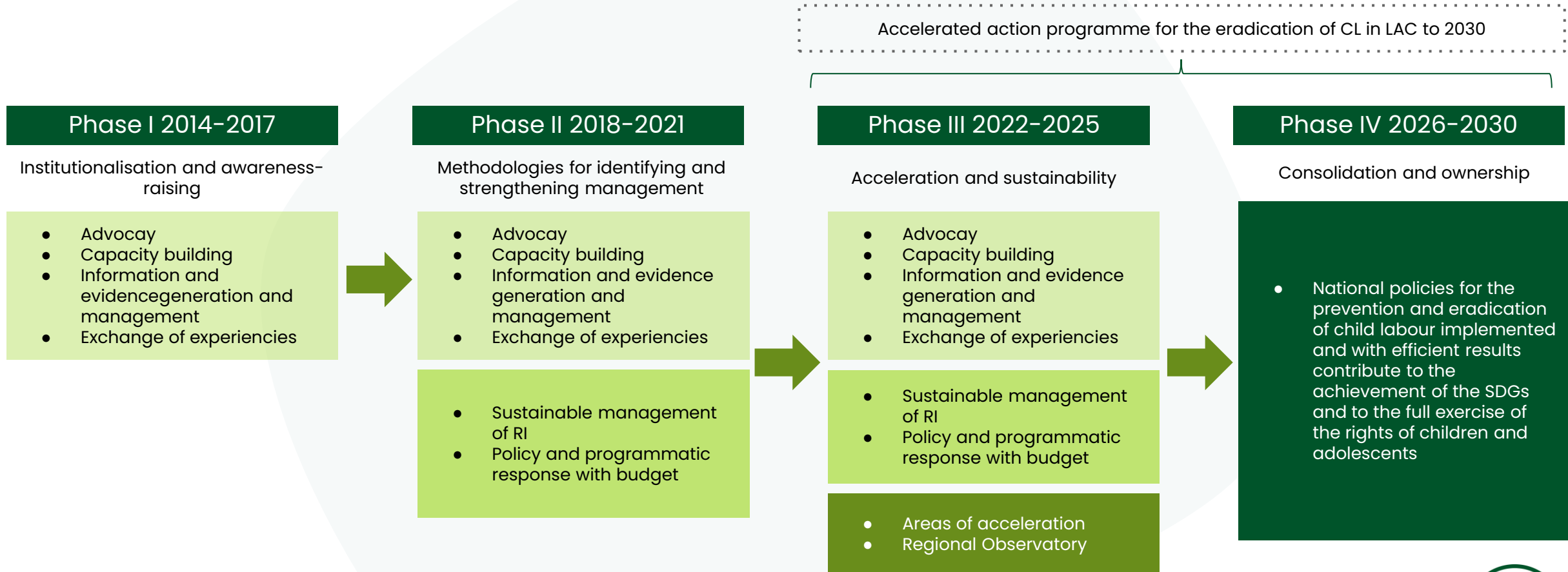
Session 3

Regional Programme to Accelerating the Elimination of Child Labour in Latin America and the Caribbean

PRAETI (acronym in Spanish)

María Lourdes Xirinachs
Technical Secretariat RI
October, 2022

PHASES OF IMPLEMENTATION OF THE REGIONAL INITIATIVE LATIN AMERICA AND THE CARIBBEAN FREE OF CHILD LABOUR



RELATIONSHIP BETWEEN THE REGIONAL INITIATIVE'S STRATEGIC PLAN 2022–2025 AND THE PRAETI (2023–2030)

Results level of action	Axis	Strategic lines
<p>R1. The implementation of national and local evidence-based policies for child labour prevention and elimination, with enough budget and the active participation of employers and workers.</p>	<p>A1. CLRISK as a promoter of CL prevention and eradication local policies</p>	<p>R1L1. Greater dissemination and implementation of methodologies for the identification and prevention of child labour risks.</p>
		<p>R1L2. Strengthening of national, local, and tripartite ownership of methodologies for the identification and prevention of child labour risks.</p>
		<p>R1L3. Successful use of methodologies for the identification and prevention of child labour risks.</p>
<p>R2. The countries taking part in the RI have intersectoral strategies and/or interventions focused on the promotion of decent work, quality education, vocational training, CL-free supply chains, and the protection of the rights of migrant children and adolescents.</p>	<p>A2. Areas of focus for a more comprehensive intervention</p>	<p>R2L1. Strategies and interventions that promote decent work as an instrument for the child labour elimination program (PETI).</p>
		<p>R2L2. Educational and employment training strategies and interventions that have an impact on PETI.</p>
		<p>R2L3. Definition of strategies for the identification, prevention, and/or elimination of CL in various stages of the supply chains.</p>
		<p>R2L4. Quantitative and qualitative evidence generated to guide the decisions of the relevant authorities regarding PETI of migrant children and adolescents.</p>



RELATIONSHIP BETWEEN THE REGIONAL INITIATIVE'S STRATEGIC PLAN 2022-2025 AND THE PRAETI (2023-2030)

Results level of action	Axis	Strategic lines
R3. A regional information, monitoring, and follow-up system has been established based on homogenized indicators that generate evidence on child labour prevention and elimination.	A3. More Efficient and effective actions with greater impact	R3L1. Follow-up mechanisms to monitor the strategy of the Regional Initiative.
		R3L2. Strengthening of child labour measurement and reporting.
		R3L3. Regional Child Labour Observatory.
R4. Strong partnerships established for the economic sustainability of the implementation of actions aimed at the eradication of child labour.	A4. Economic sustainability	R4L1. Economic commitment of member countries.
		R4L2. Design of new strategies with the ILO.
		R4L3. Creation of the Multi-Donor Fund for the Regional Initiative.
		R4L4. Mobilisation of national and regional resources through the Alliance 8.7.



THE PRAETI PROMOTES THREE STRATEGIC PUBLIC POLICY CHANGES

- The first is the **identification and understanding of child labour issues, especially in the new context of health, economic and social crisis.**
- The second is the **use of information and evidence to guide the efforts of the State, employers and workers** to prevent and eradicate child labour. This step is materialised in the constitution of multi-stakeholder dialogue instances, **the construction or strengthening of National Action Plans** – which we have called **Country Acceleration Plans.**
- **The third step is implementation,** which is the concretization of national policies and strategies that are intersectoral, participatory, decentralized and articulated with the Country Acceleration Plans. It requires, at the same time, sufficient and results-oriented budget allocations, as well as trained technical teams. It also implies the implementation of permanent monitoring, follow-up and adjustment processes.



THE PRAETI AIMS TO ACCELERATE ACTIONS TOWARDS THE ERADICATION OF CHILD LABOUR IN THE REGION THROUGH COUNTRY ACCELERATION PLANS

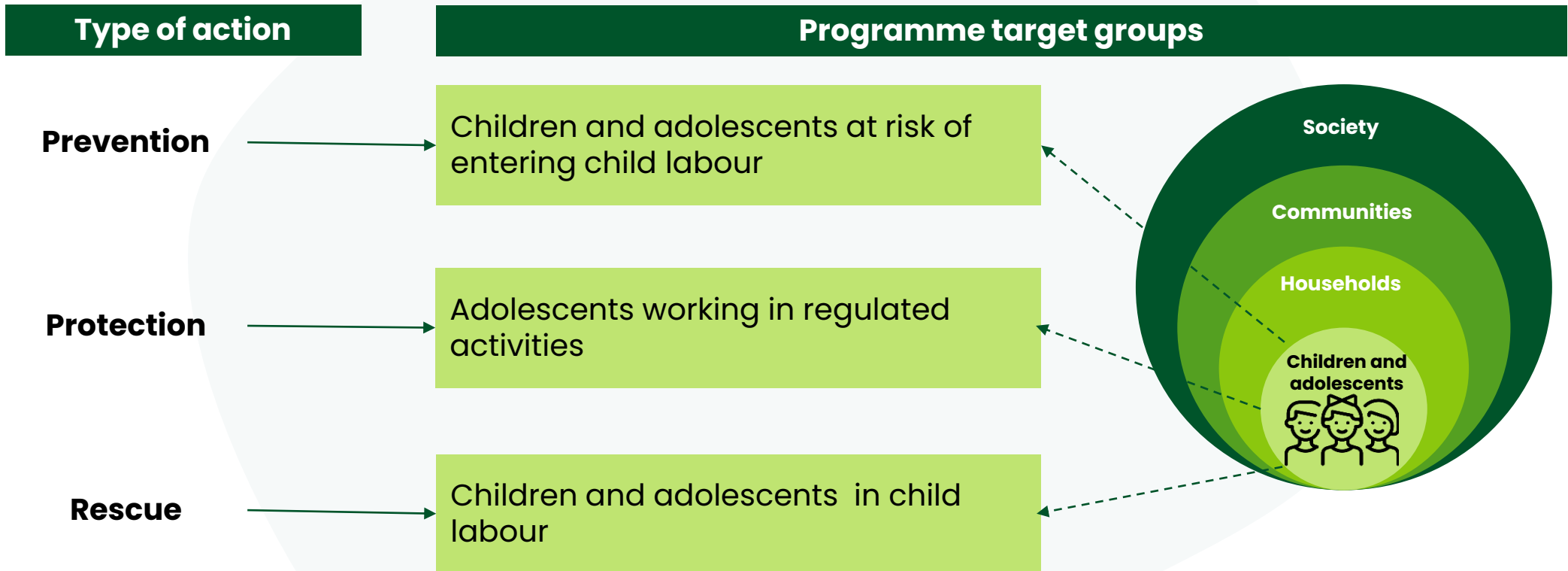
Country Acceleration Plans:

- They aim at joining efforts at local, national and regional levels to influence the structural causes that promote the incorporation of children and adolescents into work.
- This involves intervening in key areas: guaranteeing decent work for adults, education, social protection for workers and families, eradicating child labour in supply chains, protecting migrant children and adolescents, and achieving a gender-equitable society.
- The Acceleration Plans will promote the articulation between programmes, public and private services that have a broad impact, in such a way that, aiming at target 8.7, the processes will be consolidated by 2030 and will have contributed to the full exercise of the rights of children and adolescents.

The result of these acceleration plans will allow **Latin America and the Caribbean to advance towards the first generation free of child labour.**



THE PRAETI SEEKS TO ENSURE THAT CHILDREN AND ADOLESCENTS EXERCISE THEIR RIGHTS AND ENJOY FULL OPPORTUNITIES FOR DEVELOPMENT



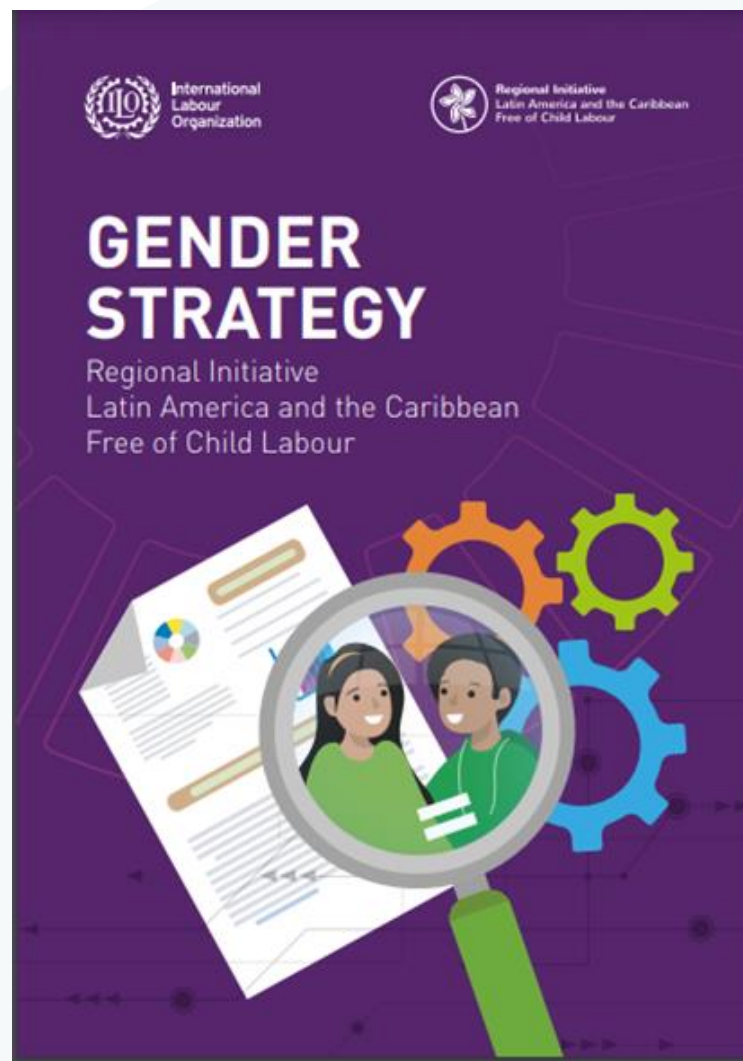
MULTI-DONOR FUND: THE PROPOSED, BUT NOT EXCLUSIVE, FUNDING INSTRUMENT TO GIVE SUSTAINABILITY TO THE SUGGESTED ACTIONS

The Programme contemplates the creation of a Multi-donor Fund for the sustained financing of actions in LAC aimed at the PETI.

The creation of the Fund implies, as we will see on Friday in session #5, an articulated work between government, employers' and workers' organisations, to achieve the joint financing of PETI in the region.



GENDER STRATEGY OF THE REGIONAL INITIATIVE



WORKING IN GROUPS

Divide into 5 groups:

- 1) Central America, Panama, Dominican Republic, Mexico, Cuba
- 2) Caribbean
- 3) South America
- 4) Employers
- 5) Workers



WORKING IN GROUPS

Answer the following questions by geographical area / employers' sector / workers' sector:

- 1) **What are the priorities for action? Express according to governments by geographical area, by regional workers' organisation or regional employers' organisation**
- 1) **What are the major challenges foreseen?**
- 1) **What are the opportunities identified?**





International
Labour
Organization



Regional Initiative
Latin America and the Caribbean
Free of Child Labour

Session 3

Regional Programme to Accelerating the Elimination of Child Labour in Latin America and the Caribbean

PRAETI (acronym in Spanish)

María Lourdes Xirinachs
Technical Secretariat RI
October, 2022