



SECOND STREET & MTIGWAAKIIS

Housing Developments

GOALS

Mtigwaakiis (Murray Housing)

- To shorten the current NAHASDA waiting list
- Design 38 units in 4 apartment complexes; 4 units ADA compliant
 - 1 or 2 Bedroom units & Efficiency
- Funded by Indian Housing Block Grant; 5 Million awarded with 1 Million LTBB contribution
- Build up to 38 units based on construction costs

Historic Indian Town (Second St)

- A place for Elder's to come home to
- Elder's units will be close but separate from Multi-Generational units
- Socialization for Elder's units
- American Rescue Plan Act (ARPA) funded
- Building 6 Elder's units with 2 Multi-Generational Townhouses

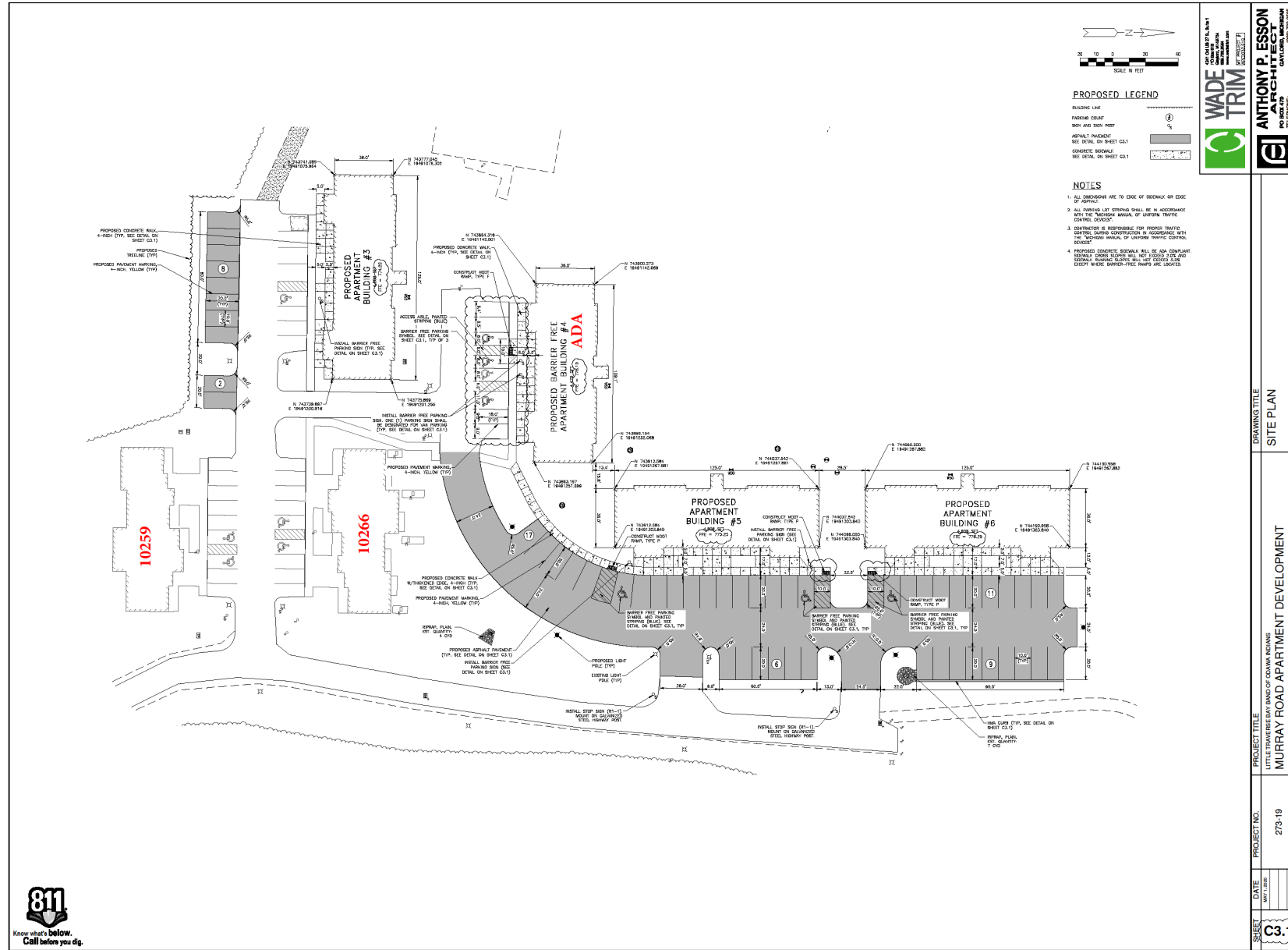
MTIGWAAKIIS HOUSING DEVELOPMENT

“STANDING OF TREES”

Murray Road, Charlevoix, Michigan



MTIGWAAKIIS SITE PLAN



WASTE TRIM
 ANTHONY P. ESSON
 ARCHITECT
 1000 W. WASHINGTON
 ST. CLOUD, MINNESOTA
 56301-7200
 TELEPHONE: 507-725-0000

DRAWING TITLE
 SITE PLAN

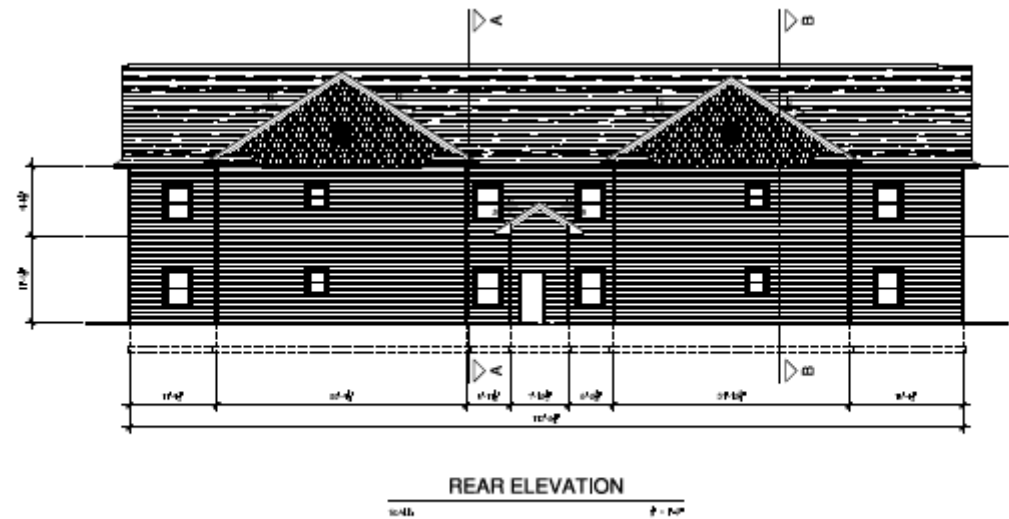
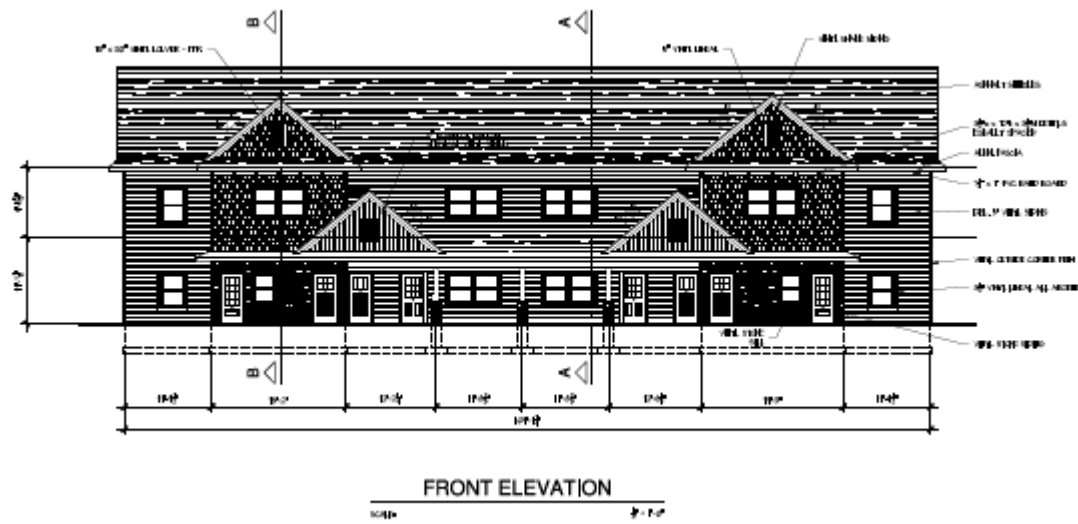
PROJECT TITLE
 MURRAY ROAD APARTMENT DEVELOPMENT

PROJECT NO.
 275-19

DATE
 06/17/2020

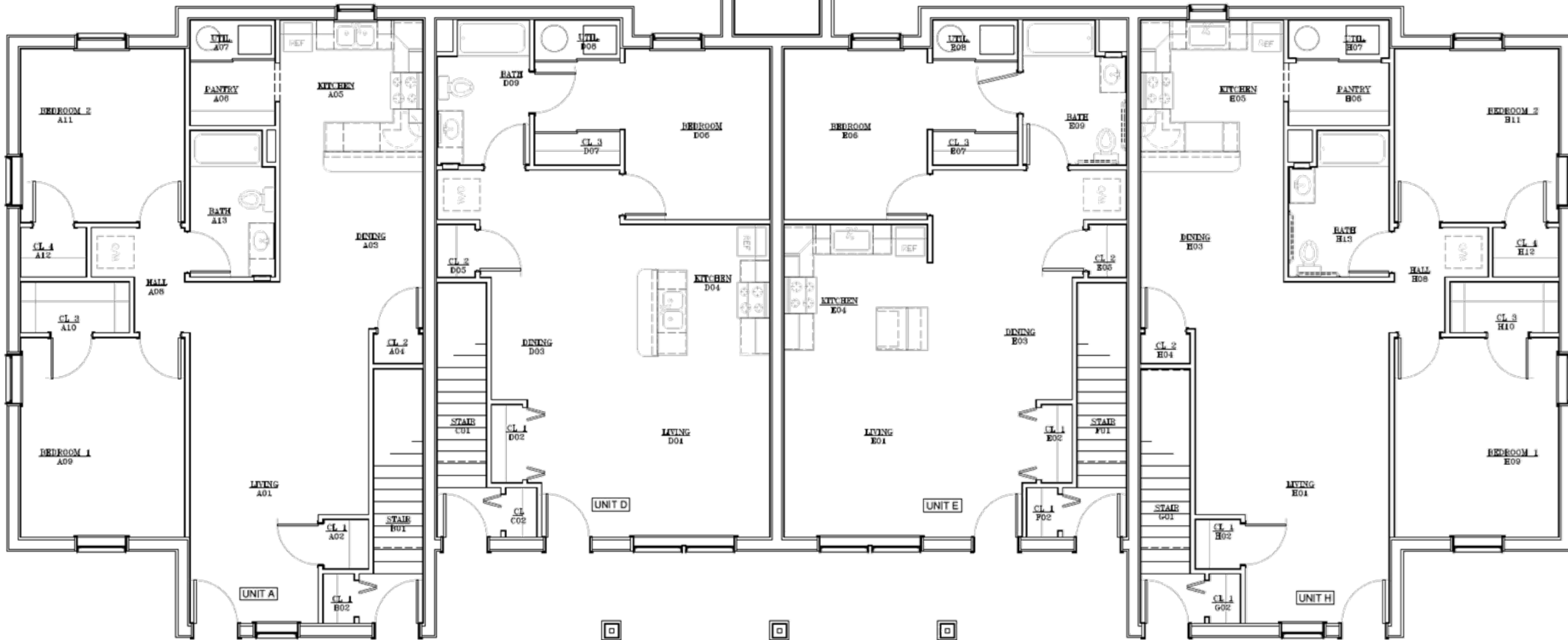
SHEET
 C3.1

BUILDING #4 – ADA COMPLIANT



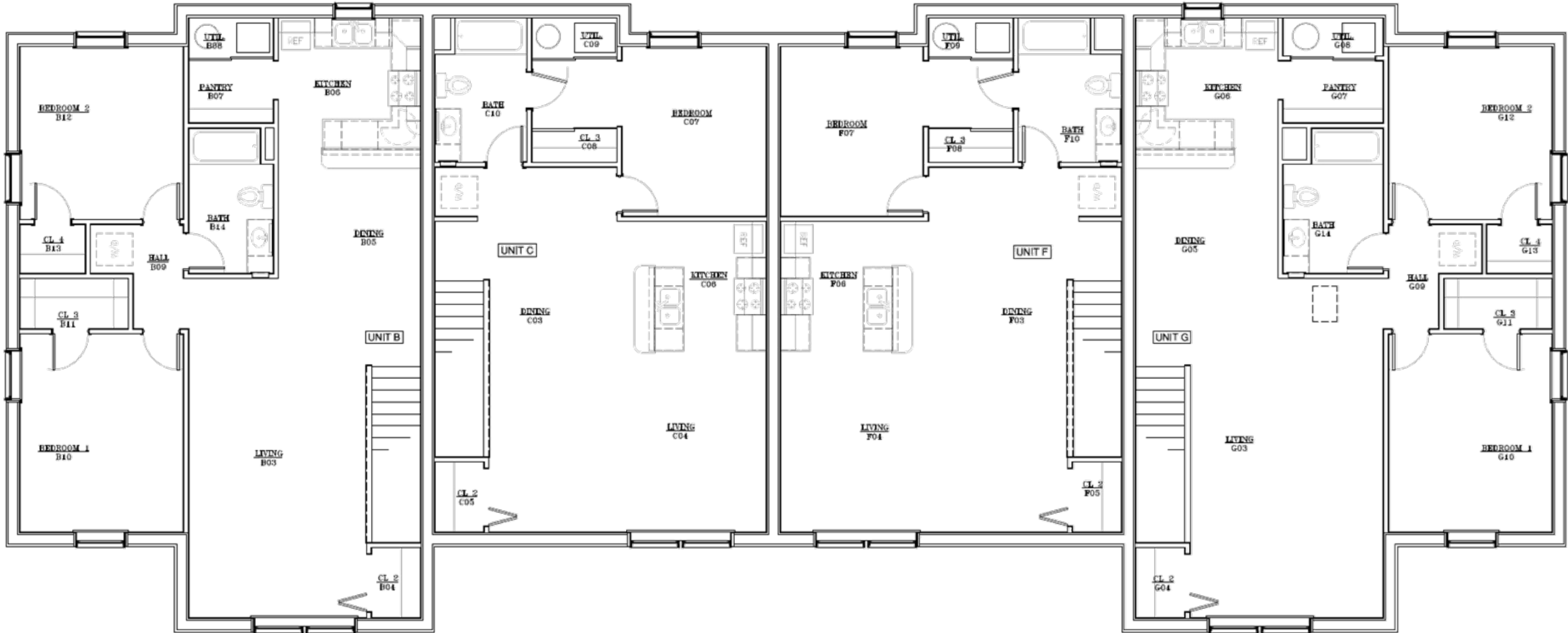
ADA BUILDING LAYOUT

FIRST FLOOR

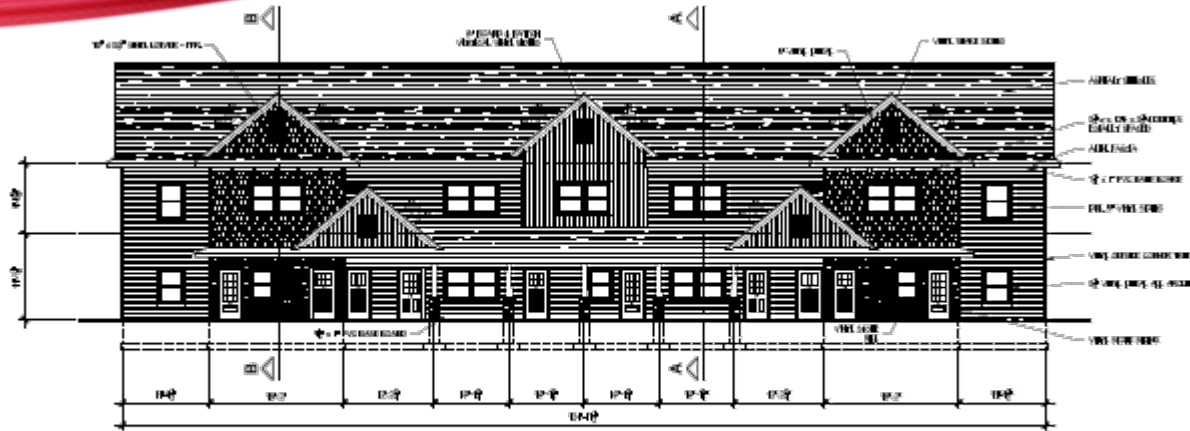


*ADA BUILDING LAYOUT

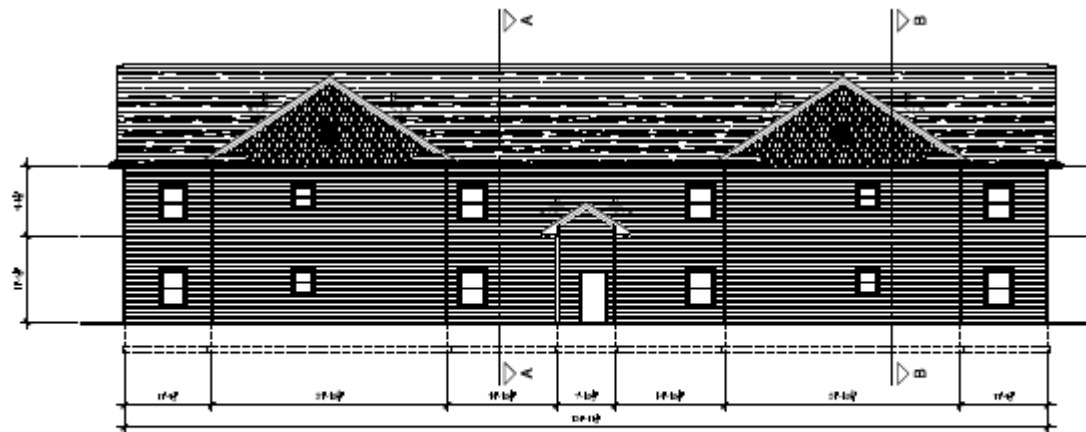
SECOND FLOOR



BUILDINGS 3, 5 & 6



FRONT ELEVATION
SCALE 1/8\"/>



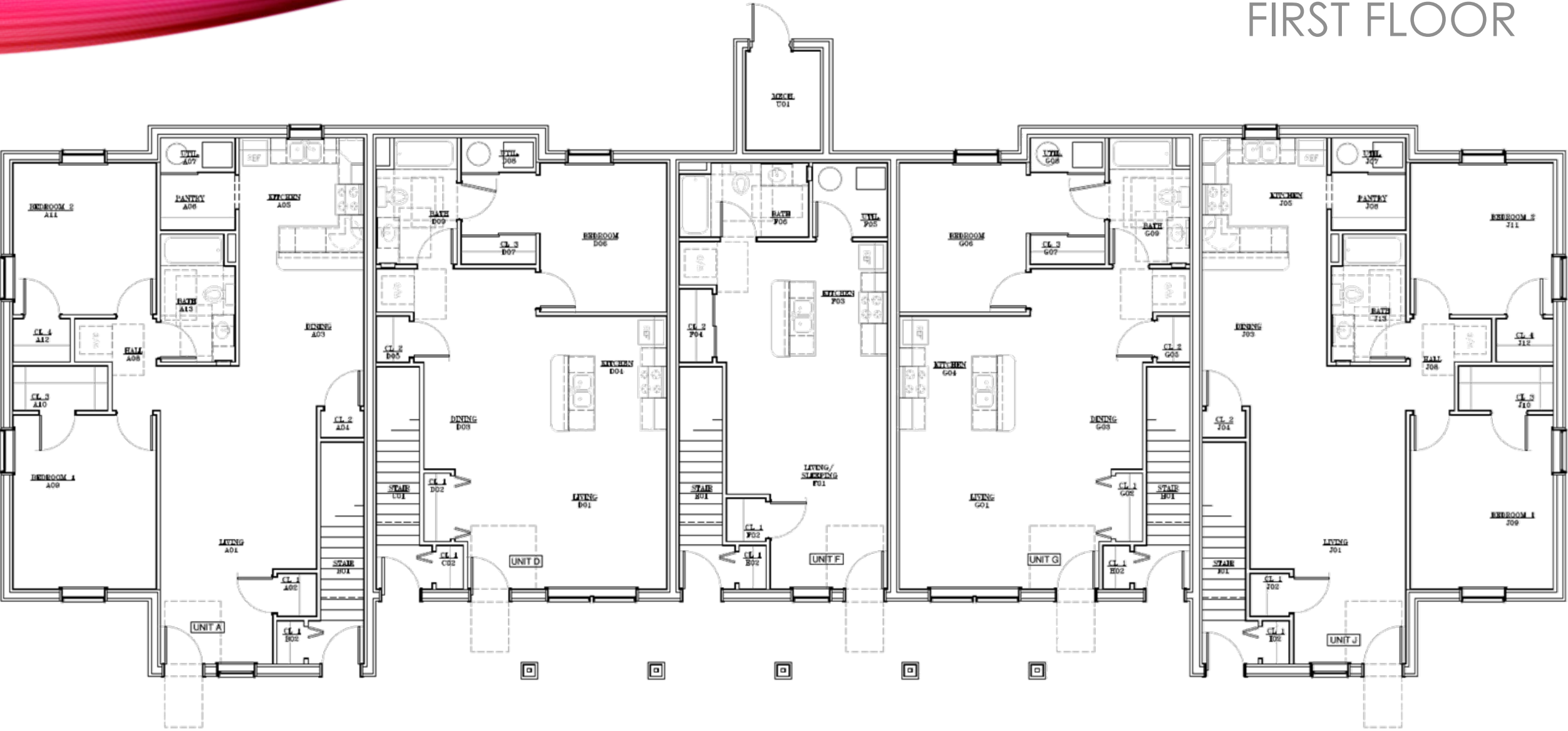
REAR ELEVATION
SCALE 1/8\"/>

- 2 bedroom & 1 bath
 - 4 units
 - 1,110 approx. SqFt
- 1 bedroom & 1 bath
 - 4 units
 - 782 approx. SqFt
- Efficiency & 1 bath
 - 2 units
 - 567 approx. SqFt

- 10 apartments per building

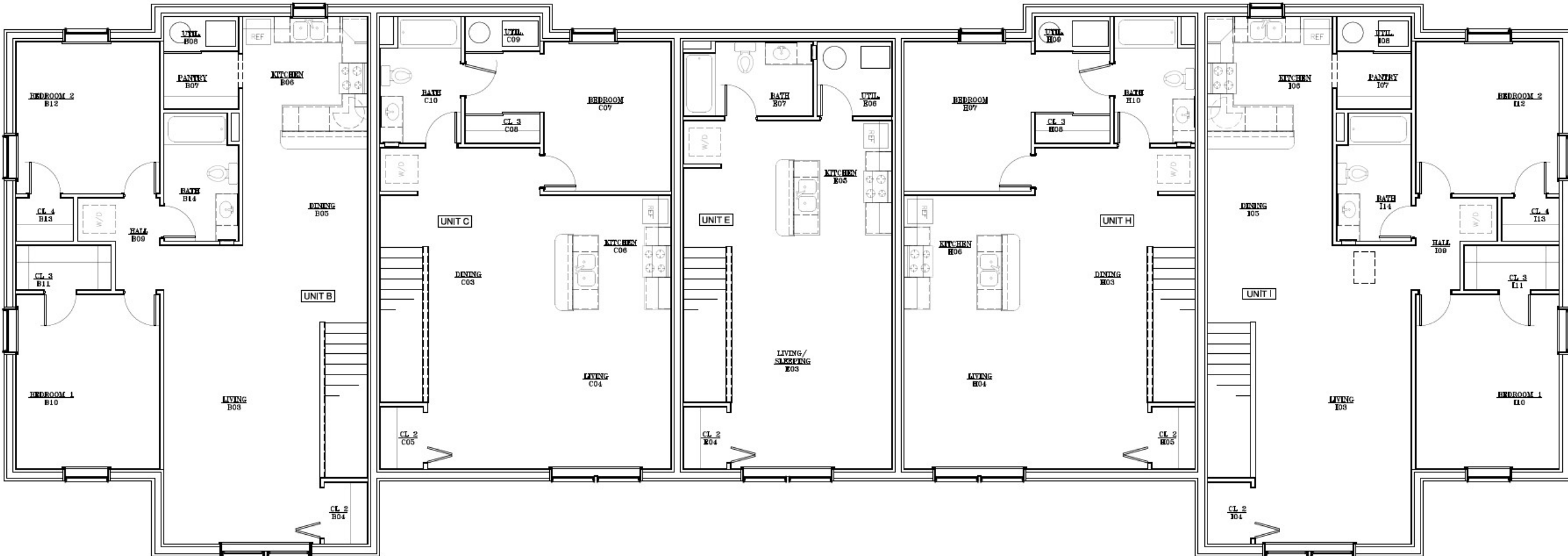
NON-ADA LAYOUT

FIRST FLOOR



NON-ADA LAYOUT

SECOND FLOOR



HISTORIC INDIAN TOWN HOUSING DEVELOPMENT

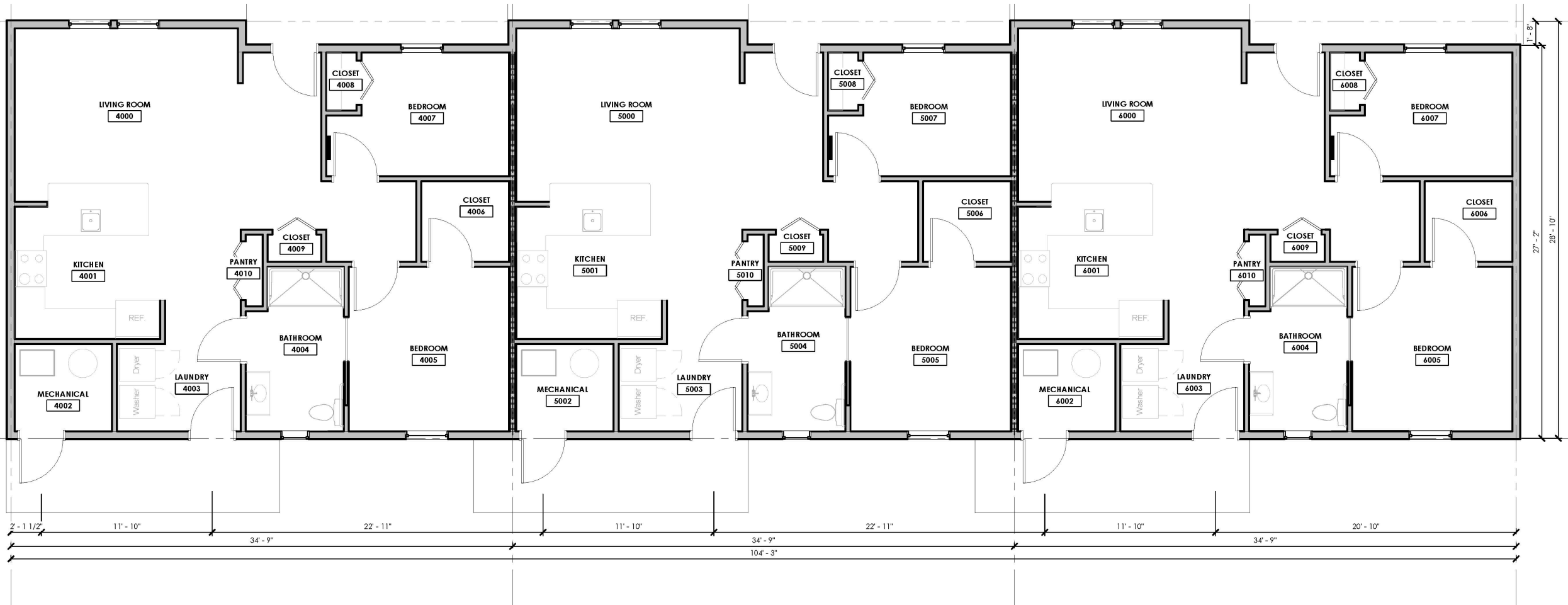
Second Street, Harbor Springs, Michigan



SECOND STREET SITE PLAN



ELDER'S UNITS FLOOR LAYOUT



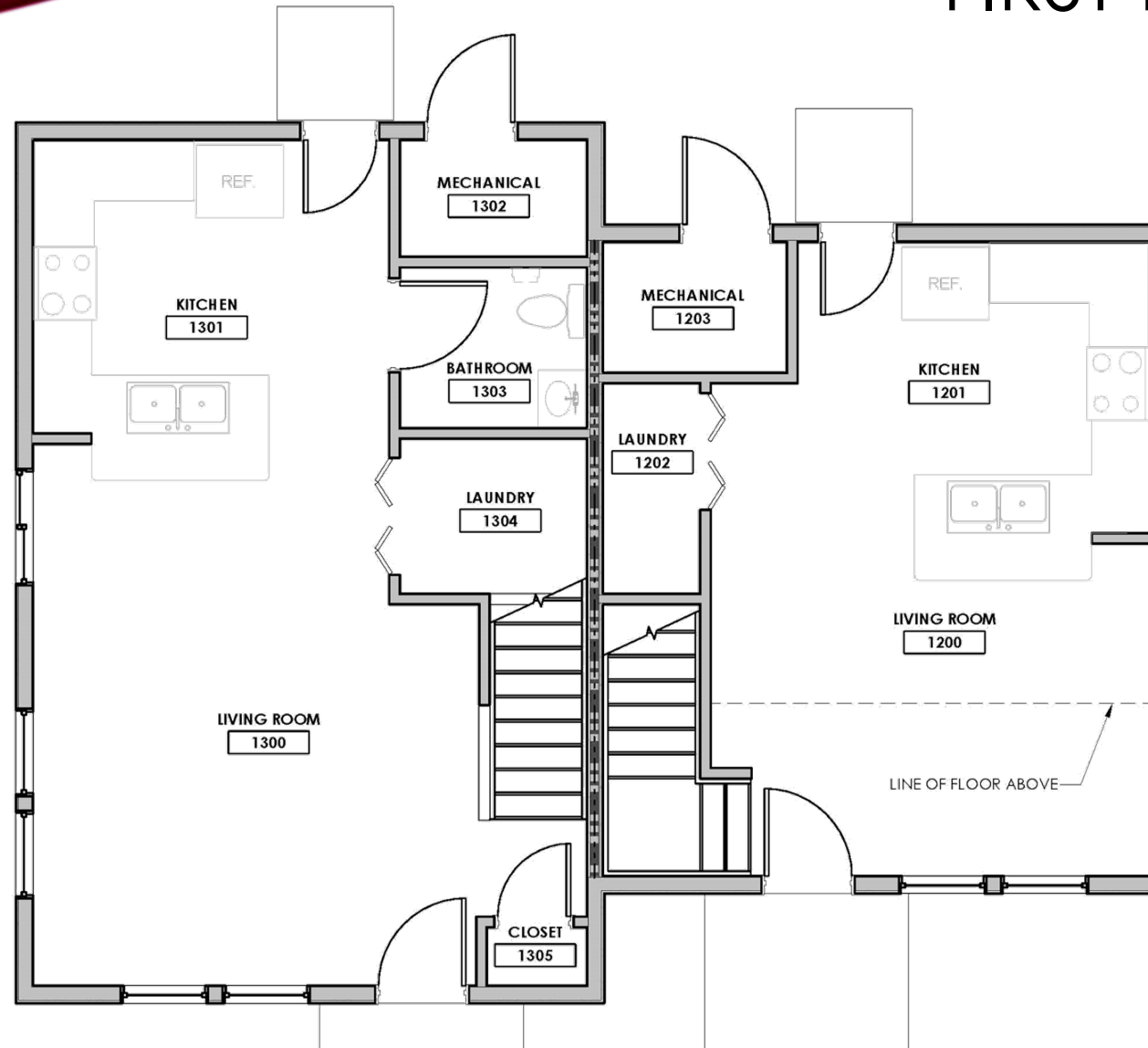
ELDERS UNITS

- Master bedroom with small ancillary room for a caretaker
- Back patios on each unit, facing the mirrored rear-facing units for elder socialization
- Wood-like (LVT- luxury vinyl tile) floors throughout most of unit
- Vinyl tiles (VCT) floors in the bathroom
- Units are fully handicapped accessible and designed for aging in place with wheelchair accessibility
- Mechanical rooms are located outside of each unit with a separate locked door
- Approx. 923 SqFt each unit

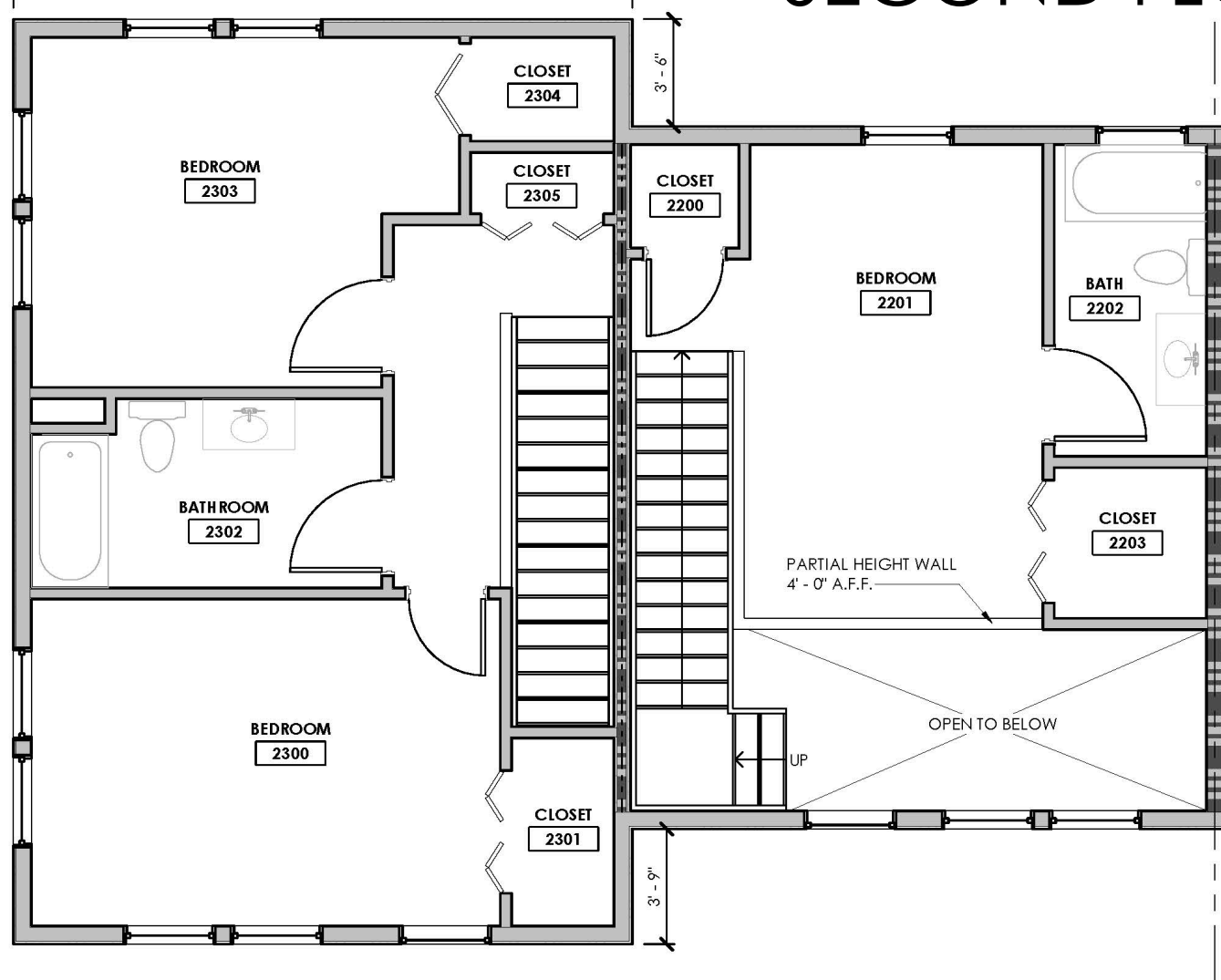
Elders Units - Second Street



MULTIGENERATIONAL UNITS FIRST FLOOR LAYOUT



MULTIGENERATIONAL UNITS SECOND FLOOR LAYOUT



MULTIGENERATIONAL UNITS

- 2 Story units
 - 1 bedroom and 1 bath units
 - 847 approx. SqFt
 - 2 bedrooms and 1 bath units
 - 1,125 approx. SqFt
- Designed for future expansion
- Conveniently located next to park with basketball court
- Within walkable distance of Downtown Harbor Springs, IGA, Harbor Springs Public Schools

Multi-Generational Units – Second Street

