

Encore Boston Harbor

Monitoring of Project Construction and Licensee Requirements 205 CMR 135

Quarterly Report Massachusetts Gaming Commission as of December 31, 2018



Monitoring of Project Construction and Licensee Requirements

Quarterly Report as of December 31, 2018

1.0 Project at a Glance

The Encore Boston Harbor (the “Project”) is an approximately \$2.4 billion luxury resort that will transform a blighted section of the City of Everett, Massachusetts adjacent to the Mystic River, into a world-class destination. The Project will contribute hundreds of millions of dollars, including tens of millions of dollars in infrastructure contributions to the City of Everett, the region, and the Commonwealth of Massachusetts. The Project is under construction on the contaminated site of a former chemical manufacturing plant totaling approximately 33.9 acres (the “Project Site”).



The Project will be comprised of a luxury hotel with 671 rooms, a gaming area, retail space, food and beverage outlets, event and meeting space, a spa and gym, a parking garage, and other complementary amenities. The Project will also include extensive landscape and open space amenities including a public gathering area with an outdoor park-like open space, a pavilion, waterfront features, a public harborwalk, and water transportation docking facilities reconnecting the City of Everett to the Mystic River and Boston Harbor for the first time in generations.

The Project will also include off-site improvements including extensive transportation improvements and a multiuse path from the Project's harborwalk to the existing paths at the Massachusetts Department of Conservation and Recreation ("DCR") Gateway Park. The Project will be developed in a single phase.

Wynn MA, LLC ("Wynn") received a conditional Category 1 gaming license for Region A (the "Gaming License") in November 2014. Since receiving the conditional Gaming License, Wynn has made significant progress on community outreach, project entitlements, permitting, land acquisition, the design, and construction of the Project.

In August 2015, Wynn selected Charter Contracting Company, LLC, a Massachusetts limited liability company, as its remediation contractor. Remediation of the landside portion of the Project Site commenced in October 2015, and final completion documentation was filed on August 4, 2016.

On July 15, 2015, Wynn filed its Second Supplemental Final Environmental Impact Report ("SSFEIR") to address the remaining three principal areas of study that were outlined in the Certificate of the Secretary of Energy and Environmental Affairs on Wynn's Supplemental Final Environmental Impact Report ("SFEIR") dated April 3, 2015. On August 28, 2015, Wynn received a Certificate of the Secretary of Energy and Environmental Affairs on its SSFEIR (the "Secretary's Certificate") concluding that Wynn's SSFEIR "adequately and properly complies" with the Massachusetts Environmental Policy Act ("MEPA").

In accordance with MEPA, following the receipt of its Secretary's Certificate, Wynn worked with various state agencies to obtain "Section 61 findings," a determination made by an agency of the Commonwealth describing the environmental impact, if any, of the Project and a finding that all feasible measures have been taken to avoid or minimize said impact. Wynn received its Section 61 findings from the following agencies on the dates set forth below:

| | |
|--------------------------------------------------------------------------------------------|------------------|
| Massachusetts Water Resources Authority: | January 12, 2016 |
| Massachusetts Port Authority: | January 21, 2016 |
| Massachusetts Department of Transportation & Department of Conservation and Recreation: | April 5, 2016 |
| Massachusetts Gaming Commission: | April 25, 2016 |

On August 24, 2015, Wynn filed its Chapter 91 License Application for the Project with the Massachusetts Department of Environmental Protection (“MassDEP”) to obtain license authorization for the development of a portion of the Project on private filled and flowed tidelands. MassDEP issued the Chapter 91 License on August 3, 2016.

On February 28, 2017, Wynn filed a Notice of Project Change (“NPC”) identifying changes to programming and design refinements for the Project and including a sediment remediation plan for a portion of the Project Site and an adjacent area of the Mystic River.

2.0 Cost of Construction and Capitalization of Gaming Licensee

Pursuant to 205 CMR 135.02(5)(a) and (b), please see Appendix 1 for a sworn certification regarding (a) the total estimated cost of construction of the Project and related infrastructure improvements and (b) the capitalization of the Wynn for the quarter ending December 31, 2018.

3.0 Design and Construction Contracts

Pursuant to 205 CMR 135.02(5)(c), please see Appendix 2 for a list of all design and construction contracts executed for the quarter ending December 31, 2018 to design and construct the gaming establishment and related infrastructure improvements.

4.0 Progress of Construction

Pursuant to 205 CMR 135.02(5) (d), the following is a status report regarding the progress of the construction of the Project.

4.1 Federal Permits.

On May 18, 2017, Wynn filed a Permit Modification Request with the US Army Corps of Engineers to modify the permit previously issued for the Project to include (i) accessibility improvements for the floating dock system, (ii) installation of three piles to protect an outfall, and (iii) remedial activities including the removal of derelict barges, debris removal, and additional dredging and filling in the Mystic River. The permit modification was issued on August 31, 2017 and reissued on September 11, 2017. Another permit modification was received on June 25, 2018 to address erosion of a limited portion of the cap.

4.2 State Permits.

On July 15, 2015, Wynn filed its SSFEIR to address the remaining three principal areas of study that were outlined in the Certificate of the Secretary of Energy and Environmental Affairs on Wynn's SFEIR dated April 3, 2015. On August 28, 2015, Wynn received a Secretary's Certificate concluding that Wynn's SSFEIR "adequately and properly complies" with MEPA.

The Secretary's Certificate confirmed that Wynn's traffic analysis and mitigation plans are effective to mitigate the Project's impacts on existing transportation infrastructure. With respect to broader regional transportation impacts, the Secretary's Certificate required the establishment of a "Regional Working Group" to be led by MassDOT for the purpose of assessing and developing long-term transportation improvements that will support sustainable redevelopment and economic growth in and around Sullivan Square. Wynn committed to participating in this Regional Working Group and providing a proportionate share of funding to support this effort. Wynn has attended all monthly meetings of the Lower Mystic Regional Working Group ("LMRWG").

The Secretary's Certificate also required enhanced public review during permitting and development of Section 61 findings by MassDOT and the Massachusetts Gaming Commission ("MGC"). Following the receipt of the Secretary's Certificate, Wynn had productive meetings with each of the State Agencies with permitting authority over the Project for the purpose of preparing Section 61 findings to be issued by each such State Agency. Wynn received its Section 61 findings from the following agencies on the dates set forth below:

| | |
|--------------------------------------------------------------------------------------------|------------------|
| Massachusetts Water Resources Authority: | January 12, 2016 |
| Massachusetts Port Authority: | January 21, 2016 |
| Massachusetts Department of Transportation & Department of Conservation and Recreation: | April 5, 2016 |
| Massachusetts Gaming Commission: | April 25, 2016 |

On February 28, 2017, Wynn filed an NPC with MEPA. The primary purpose of the NPC was to describe the sediment remediation plans for a portion of the Project Site and an adjacent parcel located in the Mystic River. The NPC also described refinements to the program and interior layout of the building to reflect current market conditions as they have changed since prior MEPA filings. Program changes include a reduction in retail space, a reduction of hotel suites to provide for additional rooms, an increase in food and beverage space, the addition of a larger luxury ballroom space, and an increase in "back of house" support space. The NPC contained updated square footage for each of the Project components as they were further

refined and finalized as part of the design process. Other minor changes that developed over the course of designing and preparing construction documents for the Project were also included in the NPC (e.g., minor adjustments to the elevation of the salt marsh to improve viability, minor changes to the docking and float systems to accommodate Americans with Disabilities Act (“ADA”) and other passenger needs, and a minor reduction in the navigational dredge footprint).

On August 24, 2015, Wynn filed its Chapter 91 License Application for the Project with the MassDEP to obtain license authorization for the development of a portion of the Project on private filled and flowed tidelands. Wynn received its “Written Determination” from MassDEP on January 22, 2016. On February 11, 2016, Mayor Joseph A. Curtatone, in his capacity as Mayor of the City of Somerville (“Somerville”), filed a “Notice of Claim” with the Executive Office of Energy and Environmental Affairs, Department of Environmental Protection, requesting an adjudicatory hearing with respect to the Written Determination. On February 18, 2016, the Office of Appeals and Dispute Resolution of MassDEP issued a Scheduling Order pursuant to which a hearing on Somerville’s appeal was set for June 2, 2016. As a direct result of this appeal, Wynn was unable to commence construction activities within those portions of the Project Site that are subject to Chapter 91.

On June 2, 2016, Wynn, Somerville and the DEP participated in the adjudicatory hearing. On July 15, 2016, MassDEP’s Office of Appeals and Dispute Resolution issued a “Recommended Final Decision” affirming Wynn’s Written Determination, and MassDEP issued the Chapter 91 License on August 3, 2016.

On February 22, 2017, Wynn filed a request with MassDEP for a Minor Project Modification, pursuant to CMR 9.22(3), to modify the below-grade footprint of underground parking facility. The requested modifications included (i) decreasing the below-grade parking structure from three (3) levels to one (1) level under the peninsular portion of the building footprint, (ii) a setback of the below-grade parking structure footprint under the main entrance, and (iii) increasing the below-grade parking structure from three (3) levels to four (4) levels under the remaining portion of the main building footprint. None of the foregoing modifications extended the below-grade building footprint, increased the total number of parking spaces, or changed any previously authorized uses. On February 28, 2017, MassDEP determined that the proposed modifications comply with the minor project modification provisions set forth in 310 CMR 9.22(3)(a) and that the submission of a Chapter 91 Waterways License Application was not required for such modifications.

On March 16, 2017, Wynn filed a request with MassDEP for a second Minor Project Modification, pursuant to CMR 9.22(3), to (1) reduce the living shoreline elevation, (2) increase the total number of hotel rooms from 629 to 671, (3) modify the docking facility of the Project to accommodate an improved accessible ramping system, (4) install three fender piles to protect an outfall structure, and (5) in response to market conditions, change the size and location of some first floor uses. On March 29, 2017, the DEP determined that the proposed modifications (1) through (4) above comply with the minor project modification provisions set forth in 310 CMR 9.22(3)(a) and that the proposed modification (5) complies with 310 CMR 9.22(3)(b). Therefore, DEP determined that the submission of a Chapter 91 Waterways License Application was not required for such modifications.

On May 12, 2017, Wynn filed a Chapter 91 License and Water Quality Certification Application with MassDEP for the removal of deteriorated barges and sediment remediation in a portion of the Mystic River located in the Cities of Boston and Everett. MassDEP issued a Water Quality Certification on August 25, 2017, which came into effect on September 15, 2017 after the three-week appeal period ended. A draft Chapter 91 License was issued on August 29, 2017. The final license was issued on September 25, 2017 following the expiration of the appeal period. On June 18, 2018, the Department approved an amendment to address erosion of a limited area of the sediment remediation cap. On May 24, 2018, Wynn filed a Minor Project Modification for the sediment remediation Chapter 91 License to address the limited cap erosion, the request was presumptively approved following a thirty (30) day review period.

On May 22, 2017, Wynn submitted a request for an amendment to its combined 401 Water Quality Certification with MassDEP to conduct remediation activities at an area of the proposed living shore line where seepage of discolored water was observed. On June 29, 2017, MassDEP approved the amendment.

On June 21, 2017, Wynn filed a combined Phase III Remedial Action Plan and Phase IV Remedy Implementation Plan with MassDEP for the sediment portion of the Project Site. The purpose of the Phase III Remedial Action Plan was to establish remedial objectives, identify and evaluate remedial action technologies, formulate and evaluate remedial action alternatives, and select a remedial action alternative for the sediment portion of the Project Site that will result in a Permanent Solution. The Phase IV Remedy Action Plan addresses the design, construction, and implementation of the "Comprehensive Remedial Action" to be implemented for the sediment portion of the Disposal Site. A public meeting was held on June 29, 2017 and the public comment period ended July 11, 2017 in accordance with the Public Involvement Plan ("PIP") process. On December 6, 2018, Wynn filed the Phase IV As-

Built Construction and Final Inspection Report, Partial Permanent Solution Statement, and two Activity Use Limitations (“AULs”) as part of the sediment remediation closure documents. A public meeting was held on December 17, 2018 and the public comment period will end on January 9, 2019.

A MassDOT/DCR Access Permit for transportation and pedestrian improvements work on Route 16 in Everett, Medford, and Revere, was received on October 31, 2017. MWRA 8(m) permits were also granted for the transportation improvements projects in Sullivan Square on November 8, 2017, and on Route 16 and Broadway/Alford Street on November 28, 2017, respectively.

On March 16, 2018, Wynn filed a request with MassDEP for a third Minor Project Modification, pursuant to CMR 9.22(3), to (1) add additional open space between Alford Street and the Project with landscaping and other improvements and (2) add additional open space west of the Project’s service road for temporary and emergency access purposes. On April 2, 2018, MassDEP sent a Decision on Request for Third Minor Project Modification asking for additional documentation to allow for the additional parcels to be added to the License. Wynn responded to DEP’s Decision on June 15, 2018.

On April 23, 2018, Wynn filed a Chapter 91 License Application for Phase 1 of the DCR Harborwalk Connector project (as described below). DEP issued the Chapter 91 License on September 21, 2018.

On April 30, 2018, an application for Site Plan review and approval was submitted to Boston Water & Sewer Commission (“BWSC”) for pedestrian and landscape improvements on Alford Street. BWSC approved the Site Plan on July 18, 2018.

4.3 Local Permits.

On May 11, 2015, Wynn submitted its Form 19A Site Plan Review Application to the Everett Planning Board. The City of Everett engaged outside consultants, LDD Collaborative, Inc. and TranSystems, to provide Site Plan Review services for the Project. On July 13, 2015, Wynn presented its Site Plan Review Application at the Everett Planning Board public meeting and advised the Everett Planning Board that it would be modifying its application to address comments raised by the City of Everett’s outside consultants. On August 24, 2015, Wynn presented its modified application to the Everett Planning Board and the Everett Planning Board heard public comments. On September 16, 2015, the Everett Planning Board concluded the public hearing and unanimously approved the application.

The Application Site Plan Review and Special Permit for the Project's service road was submitted to the City of Everett Planning Board for review in January 2016. On May 5, 2016, the Everett Planning Board issued the Site Plan Approval for the Project's service road.

On August 11, 2015, Wynn submitted its Notice of Intent for the Project to the City of Everett Conservation Commission in order to obtain approval under the Massachusetts Wetland Protection Act for work within wetlands resource areas and buffer zones. The Everett Conservation Commission held an initial public meeting on August 20, 2015. On September 17, 2015, the Everett Conservation Commission held another public meeting and voted unanimously to approve Wynn's Notice of Intent. The Everett Conservation Commission issued its Order of Conditions with respect to the Project on September 24, 2015.

On May 31, 2017, Wynn filed an application for an amendment to the Everett Conservation Commission Order of Conditions. The purpose of the amendment was to include accessibility improvements for the floating dock system and installation of three piles to protect an outfall. The revised Order of Conditions was issued on July 13, 2017. On June 11, 2018, Wynn filed an application for an amendment to the Everett Order of Conditions for minor landscaping and grading revisions in the southeast portion of the Project Site adjacent to the City of Boston and a request to extend the Order of Conditions. Both the amended Order of Conditions and Extension were issued on June 21, 2018.

On May 3, 2017, Wynn filed a Notice of Intent with the City of Boston for sediment remediation within the portion of the cove located within the City of Boston. The City of Boston issued an Order of Conditions on June 13, 2017 and the Certificate of Compliance was received on July 18, 2018. On May 4, 2017, Wynn filed a Notice of Intent with the City of Everett for sediment remediation within the portion of the cove located within the City of Everett. The City of Everett issued an Order of Conditions on June 15, 2017, an Amended Order of Conditions to address erosion due to a shoreline seep was issued on May 7, 2018, and the Certificate of Compliance was received on November 15, 2018.

On October 19, 2017, Wynn received a Roadway Construction Approval from the City of Everett for the roadway improvements on Broadway and Alford Streets.

On April 18, 2018, a Notice of Intent was filed with the City of Boston for pedestrian and landscape improvements. An Order of Conditions was issued on May 16, 2018.

On May 3, 2018, a Notice of Intent was filed with the City of Everett for Phase 1 of the DCR Harborwalk Connector. An Order of Conditions was issued on May 17, 2018.

On July 27, 2018, a Notice of Intent was filed with the City of Everett for Phase 2 of the DCR Harborwalk Connector. An Order of Conditions was issued on August 16, 2018.

Pursuant to 205 CMR 135.02(6), please see Appendix 3 for an updated permits chart and all documents and information listed in 205 CMR 120.01: *Permitting Requirements*.

4.4 Site Remediation.

Prior to the commencement of the remediation, Wynn completed field investigation including nearly 2,000 samples landside and in the river, and significant laboratory analysis of the samples. On April 8, 2015, Wynn received a petition from residents of the City of Everett requesting that the disposal site be designated as a PIP site in accordance with Massachusetts General Laws (MGL) c. 21E §14(a). This law requires that, upon receiving such a petition, a plan for involving the public in decisions regarding response actions must be prepared and a public meeting held to present the proposed plan. The disposal site was designated as a PIP site on April 28, 2015. The PIP process was used to educate the public on the remediation process and provide a forum for addressing any comments. The PIP process will continue through the completion of the construction related remediation activities.

Wynn and GZA GeoEnvironmental, Inc., the Licensed Site Professional (“LSP”) for the Project Site, presented the draft PIP plan at a public meeting on June 2, 2015 at Everett City Hall. In addition, the draft Release Abatement Measure (“RAM”) plan was also presented at the meeting. The comment period for the PIP plan was scheduled to end on June 22, 2015, but was extended by Wynn at the request of the petitioners for an additional 21 days to July 13, 2015. In addition, the comment period for the draft RAM plan was extended an additional 30 days to July 22, 2015.

On August 19, 2015, the RAM plan for the landside remediation (known as Phase 1) was submitted to the MassDEP and all petitioners were notified accordingly.

Pursuant to the RAM Plan, Wynn held public meetings in Everett and Charlestown on October 15 and 16, 2015, respectively, for the purpose of informing the public regarding the remediation prior to commencement. Remediation of the Project Site began following such meetings. Weekly updates on the remediation were posted on Wynn’s website (www.encorebostonharbor.com). The perimeter air-monitoring system was operational

throughout the remediation and no alarm conditions attributable to the RAM work were recorded.

Phase 1 remediation of the Project Site was completed in the second quarter of 2016. A total of approximately 10,680 tons of contaminated soil was transported off-site for proper disposal during Phase 1. The soil was transported in lined trailers that were cleaned prior to leaving the Project Site. The Draft Phase I RAM Completion Report and Immediate Response Action Report was submitted on August 4, 2016. A public meeting on the Phase I RAM Completion Report was held on September 7, 2016. The public comment period ended September 27, 2016, and no comments were received.

A separate RAM Plan was prepared to address construction-related RAM activities. Response actions to be conducted under this RAM Plan included the excavation of contaminated soil, the dredging of contaminated sediment, and the placement of clean fill materials at the properties identified in the RAM Plan. On February 17, 2016, a public meeting on the construction-related RAM Plan was held at the Everett City Hall. The public comment period for the construction-related RAM Plan ended on March 9, 2016. No comments were received. On May 2, 2016 the construction-related RAM Plan and a Final Revised Public Involvement Plan was filed. On August 30, 2016, constructed-related RAM Status Report No. 1 was filed. On October 28, 2016 and November 16, 2016, RAM Modifications were filed with MassDEP to address the detection of asbestos in soil associated with demolition debris. On February 2, 2017, a RAM Modification was filed with MassDEP to revise perimeter and interior air sampling for airborne fibers. On November 1, 2017, a RAM Modification was filed with DEP to document the engineering controls including clean cover materials, marker layers, and hardscape materials that will be installed as part of the final grading activities and the planned reduction in the number of active perimeter air monitoring stations.

Wynn has undertaken a project to dredge and cap approximately seven acres of the Mystic River within and immediately adjacent to the Project Site. The intent of the dredging is to (1) remove and replace contaminated sediments that reside on the bottom of the river as a result of decades of industrial use of the surrounding land, and (2) to restore the depth of the navigable channel to allow for safe and efficient access to the Project Site by various size passenger craft. Orders of Conditions were issued from the Boston and Everett Conservation Commissions on June 14, 2017 and June 15, 2017, respectively. For the sediment remediation, DEP issued a Water Quality Certification ("WQC") on August 25, 2017 and Chapter 91 license on September 25, 2017 and U.S. Army Corps of Engineers modified the resort permit to allow for the sediment remediation on September 11, 2017. Dredging began in October 2017. Fish migration in the river restricts dredging activities to an annual window

of October to February. Time of Year waivers, issued by the USACE and DEP, allowed for capping operations to continue until March 23, 2018. The Sediment Remediation project is substantially complete as of March 31, 2018.

4.5 Offsite Infrastructure.

As described above, the Secretary's Certificate confirmed that Wynn's traffic analysis and mitigation plans are effective to mitigate the Project's impacts on existing transportation infrastructure. In light of this positive response, an RFP was issued on June 26, 2015 to select a design and permitting team to deliver the offsite roadway and transit station improvements. In November 2015, Wynn entered into an agreement with AECOM USA of America, a Massachusetts corporation ("AECOM"), to provide civil and geotechnical engineering and construction oversight services for off-site infrastructure related to the Project. During first quarter 2016, AECOM completed the applicable Roadway Safety Audits and continued with site surveys and concept design. During the second quarter 2016, site surveys were completed as well as the development of the 25% design plans and functional design reports. On April 26, 2016, Wynn and AECOM staff met with MassDOT, MBTA and DCR transportation officials to discuss the projects and schedule.

On June 14, 2016, the 25% design plans and functional design reports were submitted to the City of Everett and their peer review consultant, Weston & Sampson, at a design briefing meeting. The 25% design plans and functional design reports were submitted for review to MassDOT at a design briefing meeting held on June 24, 2016. MassDOT and the City of Everett both submitted comments in the third quarter 2016. Coordination with the Massachusetts Central Transportation Planning staff continued regarding the progression of the 25% design. Work continued on further developing the design documents to the 75%/100% stage and submittals were made to MassDOT as well as the Cities of Everett, Medford, Boston, and Chelsea for the Route 16 Roadway improvement projects that included Wellington, Sweetser, and Santilli Circles, as well as Broadway and the proposed truck route.

Howard/Stein-Hudson Associates, Inc. is Wynn's designer for the Sullivan Square improvements. During the first quarter of 2017, the MBTA contracted with Urban Idea Lab to conduct a peer review of the current design alternatives and coordination continued with the MBTA on advancing the Sullivan Square station design. Wynn filed 25% design documents for the roadway and station improvements with the City, MBTA, MassDOT, and Massport in April 2017. On March 22, 2017, Wynn filed a Notice of Intent ("NOI") application with the City of Boston Conservation Commission for its proposed improvements to the Sullivan Square Rotary and its approaches.

The offsite transportation improvements have been fully designed with comments from agency reviews incorporated. There are four separate bid packages, known as Construction Packages 1-4, generally organized by Broadway (CP #1), Revere Beach Parkway (CP #2), Wellington and Malden Center Train Stations (CP #3), and Sullivan Square, including the MBTA station (CP #4). Contracts have been awarded for all Construction Packages and all contracts are scheduled for completion in January 2019, with the majority of work being performed in the spring, summer, and fall of 2018. Close coordination is underway with the Cities of Everett, Boston, and Medford, as well as numerous state agencies to reduce the impact of the work on commuters. The communication plan for alerting drivers of upcoming work or real time problems is in place through social media, variable message signs, and press engagement.

Subject to Wynn receiving all permits required to complete the work, all offsite improvements are envisioned to be completed and operable prior to the opening of the Project.

The Off-site roadway improvement work commenced in November, 2017 and the following is a summary of construction activities through September 30, 2018 depicting the percent complete in duration:

Roadway Construction Packages

- CP #1 – Broadway/ Truck Route 75% complete
- CP#2 – Route 16/ Revere Beach Pkwy 75% complete
- CP#3 – MBTA Stations 75% complete
- CP#4 – Sullivan Square 60% complete

For CP #1, 2 and 4 the installation of underground infrastructure is significantly complete including roadway drainage systems, electrical traffic signal conduit, mast arm foundations and street lighting conduit. Sidewalk improvements and paving for CP #1, 2, and 4 continued throughout the fall. Traffic signal fine tuning and testing will continue through the winter, as needed. Significant work for CP#3 is completed and the Encore shuttle bus shelters will be installed over the winter. The remaining sidewalk and paving for CP #1, 2, and 4 will be completed in the Spring.

Median installation, paving, pavement marking installation, sign installation and traffic signal installation have been completed on Broadway. Landscaping work on Broadway remains to be completed in the Spring of 2019. Full depth pavement reconstruction of the truck route on Robin and Dexter Street was substantially completed in November and December. An

additional 500 feet of Robin Street will be completed in the Spring after Eversource utility work is completed. The pavement surface course, pavement markings, and remaining sidewalk along the truck route will be completed in the Spring.

The City of Medford has requested that Wynn undertake a water main replacement project within Wellington Circle under the CP#2 project. This impacted the milling and paving schedule which was on track for completion by November 30, 2018. Due to the MassDOT winter moratorium, the water installation and pavement mill and overlay will be completed in the Spring.

In addition to the foregoing mitigation improvements, in accordance with Wynn's Section 61 findings, Wynn is an active participant in the LMRWG. The LMRWG was convened by MassDOT to assess and develop short and long-range transportation improvements that can support sustainable redevelopment and economic growth for the Lower Mystic River area. MassDOT has engaged the services of staff from the Boston Region Metropolitan Planning Organization – including from the Metropolitan Area Planning Council ("MAPC") and from the Central Transportation Planning Staff – to provide technical assistance and study support.

The Working Group is chaired by the Secretary of Transportation and consists of elected officials and staff of the three Cities of Boston, Everett and Somerville as well as MAPC. Representatives from the Executive Office of Housing and Economic Development, the Attorney General's Office of Massachusetts, the Massachusetts Gaming Commission, former-Congressman Capuano's office, the Massachusetts Port Authority, and Wynn are also participants of the LMRWG.

4.6 Design.

Construction Drawings (dated September 16, 2016) were issued on September 30, 2016. The hotel tower, podium, site, and interiors were reviewed by the City of Everett and a Building Permit was issued on December 15, 2016. Project design is complete, including a redesign of the meeting and event space area and food and beverage modifications as outlined in the NPC. Drawings for these areas were issued in July 2017.

4.7 Construction Services.

On January 8, 2016, Wynn entered into an Agreement for Guaranteed Maximum Price Construction Services with Suffolk Construction Company, Inc. ("Suffolk"). Following the receipt of Wynn's Chapter 91 License, construction activities were commenced on all portions

of the Project Site. Wynn finalized Suffolk's Guaranteed Maximum Price on April 28, 2017. Below is a summary of the construction activities through December 31, 2018:

Hotel Tower – The curtain wall infill from the man hoist removal neared completion in December and tower signage is now lit full-time. MEP rough work is complete and finish work continued on levels 21-26. The punchlist is complete through Level 15 and Levels 5-11 have been turned over to Wynn on schedule.

Central Utility Plant (CUP) - The CUP was turned over to Wynn at the end of November and Wynn received a temporary certificate of occupancy for this area. Wynn's operations team has taken possession of this area.

Podium - Interior framing, rough mechanical and drywall are proceeding on schedule in the gaming, meeting and event space, and all adjacent areas. Raised flooring in the gaming area nears completion and two sectors of the gaming floor have been punchlisted. All of the restaurant areas have been framed and most are entirely dry walled and taped. Finishes are currently being installed in some of the restaurants. Finishes are underway in the meeting and event space and the lobby.

Site Work - Subgrade paving was completed in November and 75% of large trees have been planted. The remaining site work, planting, and paving is being installed in coordination with the exterior façade finishes.

4.8 Service Road.

The service road and utilities drawings were prepared and issued on March 31, 2016. Bids were received in early May to allow early construction of this critical work. On May 25, 2016, J. Derenzo Co. was awarded the Service Road and Utility Relocation contract. The road has been open for public use since Fall 2016.

Minor improvements along the service road have been completed over the last three quarters, including completion of access stairs and rails to a modified MBTA loading dock and removal of de-energized electrical tower and poles. The remaining service road scope of work is deferred until Spring 2019.

4.9 DCR Harborwalk Connector.

The DCR Harborwalk Connector project will connect the existing paths at the Massachusetts Department of Conservation and Recreation (“DCR”) Gateway Park to the Encore Boston Harbor harborwalk. The design of the DCR Harborwalk Connector is complete. Construction commenced in September. Sitework has been completed with finishes, final paving and landscaping to be completed in the Spring.

4.10 Owner Controlled Insurance Program (“OCIP”).

Wynn, in conjunction with Willis Towers Watson, initiated an Owner Controlled Insurance Program for the Project. The Worker’s Compensation and General Liability insurance programs were implemented on July 1, 2016 and Builder’s Risk was implemented on August 15, 2016.

4.11 Project Labor Agreement.

Following the engagement of Suffolk, Wynn and Suffolk re-engaged in discussions with local labor leaders and finalized the draft Project Labor Agreement for the Project. The Project Labor Agreement was executed on May 5, 2016.

4.12 Construction Management Plan.

Howard/Stein-Hudson Associates, Inc. prepared a Construction Management Plan (“CMP”) for the purpose of mitigating any adverse impacts to the host and surrounding communities. The CMP was submitted to the City of Everett on April 21, 2016.

5.0 Project Schedule

5.1 Six Month Look Ahead

The 6-month look ahead schedule is attached hereto as [Appendix 4](#).

5.2 Project Master Schedule

The development of the Master Schedule has evolved from a high-level schedule to a more detailed schedule. This coincides with the contractor’s efforts to increase the detail level of their schedule by working with the subcontractors as they are selected for the Project.

6.0 Project Resources/Diversity

Pursuant to 205 CMR 135.02(5)(f), please see Appendix 5 for a report describing the number of contracts, total dollars amounts contracted with and actually paid to minority business enterprises, women business enterprises and veteran business enterprises for design and construction of the Project and related infrastructure, and the total number and value of all subcontracts awarded to a minority, women and veteran owned business, and a comparison of these reports with the goals established by Wynn as approved by the MGC.



November 7, 2018

Massachusetts Gaming Commission
101 Federal St., 12th
Boston, MA 02110

Dear Commissioners:

In accordance with 205 CMR 135.02(5)(a), please see below for the total estimated cost of construction of the project and related infrastructure improvements and the costs incurred as of September 30, 2018, calculated pursuant to 205 CMR 122.03: *Costs Included in the Calculation of Capital Investment*, and separately identifying detailed costs for design, land acquisition, site preparation and construction and off-site improvements:

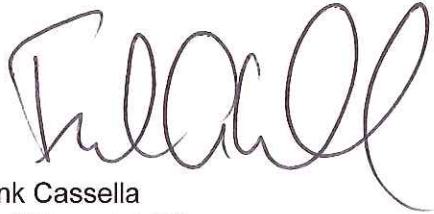
MGC Quarterly Report
Appendix 1
(US\$ thousands)

| Component | Cost Incurred 9/30/2018 | Estimated Remaining Cost | Total Estimated Cost |
|------------------------------------|------------------------------------|-------------------------------------|---------------------------------|
| Construction / on-site Development | \$ 1,311,937 | \$ 410,557 | \$ 1,722,494 |
| Design and engineering | 101,093 | 18,263 | 119,356 |
| Site preparation | 34,688 | 212 | 34,900 |
| Off-site improvements | 21,501 | 28,108 | 49,609 |
| Land acquisition | 64,357 | 1,852 | 66,209 |
| Pre-opening | 60,126 | 64,845 | 124,971 |
| Owner FF&E | 19,739 | 142,855 | 162,594 |
| Total | \$ 1,613,441 | \$ 666,692 | \$ 2,280,133 |

In addition, in accordance with 205 CMR 135.02(5)(b), I direct you to the financial statements of Wynn Resorts, Limited (NASDAQ: WYNN), the parent of Wynn MA, LLC (the "Licensee"), including Wynn Resorts' Quarterly Report on Form 10-Q for the quarter ended September 30, 2018, filed with the Securities and Exchange Commission (the "SEC") on November 7, 2018, which is available at www.sec.gov. As reflected in these financial statements, Licensee has sufficient financial resources in order to meet all expected financial obligations relating to the completion of the Project and related infrastructure improvements associated with the Project.

I, Frank Cassella, hereby certify to my knowledge and in my capacity as Chief Financial Officer of Wynn MA, LLC, as to the material veracity of the foregoing.

Sincerely,

A handwritten signature in black ink, appearing to read 'Frank Cassella', written in a cursive style.

Frank Cassella
Chief Financial Officer

Appendix 2

Design and Construction Contracts

As of September 30, 2018

Reference 205 CMR 135.02(5)(c)

| Vendor/Contractor | Date | Services | MGC Status |
|-------------------------------------------------------------------|-------------|----------------------------------------------------------------------------|-------------------|
| AECOM | 11/4/15 | Civil and Geotechnical Eng. – Offsite Infrastructure | NGV092 |
| | 1/18/16 | Design and Construction Phase Services – MBTA Everett Maintenance Facility | NGV092 |
| | 05/10/17 | Concept Design – Mystic River Pedestrian Bridge | NGV092 |
| | 12/28/17 | Bridge Design – Mystic River Pedestrian Bridge | NGV092 |
| | 04/26/18 | Parking Design – Lower Broadway | NGV092 |
| AMEC Massachusetts Inc. | 08/25/16 | Peer Review – Supplemental Phase II Site Assessment | NGV952 |
| Alliance Detective & Security | 12/31/15 | Site Security | NGV326 |
| Arup USA, Inc. | 12/10/14 | Fire Protection Consulting | NGV102 |
| Bard, Roa + Athanas Consulting Engineers, Inc. | 08/31/16 | Commissioning Services | NGV884 |
| Bohler Engineering MA, LLC | 06/08/16 | Engineering Services – Property Redevelopment - McDonalds | NGV845 |
| Building Enclosure Associates, LLC | 08/30/16 | Building Enclosure – Commissioning Svcs. | NGV989 |
| Bukhari Design Studio, LLC | 7/15/15 | Concept and Documentation Services – High Limit Gaming | NGV434 |
| Cashman Dredging & Marine Contracting and Company, LLC | 9/2/15 | Site Clean-up/Fencing | NGV450 |
| Charter Contracting Company | 11/10/15 | Site Remediation Services | NGV479 |
| Christopher Gordon | | Project Management | NGV226 |
| Cleo Design, LLC | 7/15/15 | Design Consultant – Staff Dining | NGV500 |
| | 7/15/15 | Design Consultant – Executive Offices | NGV500 |
| Code Red Consultants LLC | 10/04/16 | Life & Safety Systems Commissioning | NGV844 |
| Crabtree McGrath Associates | 03/01/18 | Food Service Consulting – Beverage Dispensing System | NGV428 |
| Cross Spectrum Acoustics | 02/06/17 | Acoustical Consultants | NGV1149 |
| DHA Design Services LTD | 9/24/15 | Exterior Lighting Design | NGV522 |
| D.W. White Construction | 10/25/17 | Off-site Roadway Improvements – Sullivan Square | NGV1353 |
| Design Enterprise | 9/17/15 | Design Consultant – High Limit Gaming | NGV460 |
| Eco Systems Pest Control Inc. | 02/16/18 | Pest Control Services – WBH MBTA Warehouse | NGV268 |
| Environmental Health & Engineer | 11/07/17 | Engineering Consultant – Asbestos Removal - Dredging | NGV1367 |
| Eslick Design Associates | 05/22/15 | Design Consultant – Site Signage | NGV383 |
| | 7/15/15 | Design Consultant – Low-Rise and Garage Signage | NGV383 |
| | 7/15/15 | Design Consultant – High-Rise Signage | NGV383 |

| | | | |
|------------------------------------------------------------------|----------|------------------------------------------------------------------------------|---------|
| | | | |
| First Circle Design, Inc. | 10/14/15 | Design Consultant – Interior Lighting – Meeting & Convention/Gaming | NGV518 |
| Fenagh Engineering & Testing, LLC | 09/08/16 | Quality Control and Inspection Services | NGV185 |
| Fennell Engineering Inc. | 12/27/17 | Structural Design – DCR Harbor Walk | NGV1437 |
| Fort Point Associates, Inc. | 12/30/14 | Planning and Environmental Consulting | NGV075 |
| | 06/28/16 | Environmental Consulting – Harbor Walk | NGV075 |
| | 06/18/18 | Permitting Consulting – Redevelopment of the BNAS Material Handling Facility | NGV075 |
| | 06/22/18 | Water Shuttle Study | NGV075 |
| Forte Specialty Contractors, LLC | 09/13/17 | Contractor – Art Feature Installation | NGV789 |
| Foundry Interior Design | 10/21/15 | Design Consultant – Performance Lounge | NGV535 |
| Gilbane Building Company | 01/24/14 | Preconstruction Consulting Services | NGV035 |
| GZA Geo Environmental, Inc. | 04/21/16 | Geotechnical and Environmental Services – Harbor Walk | NGV013 |
| Haks Engineers, P.C. | 09/08/16 | Quality Control and Testing | NGV894 |
| Hirsch Bedner Associates dba HBA/Hirsch Bedner Associates | 02/25/15 | Design Consultant – High-Rise Interiors | NGV133 |
| | 05/22/15 | Design Consultant – Public Areas | NGV133 |
| | 05/22/15 | Design Consultant – F&B | NGV133 |
| | 05/22/15 | Design Consultant – Public Areas | NGV133 |
| | 05/22/15 | Design Consultant – Buffet | NGV133 |
| | 05/22/15 | Design Consultant – Public Restrooms | NGV133 |
| | 05/22/15 | Design Consultant – Meeting and Convention | NGV133 |
| Howard/Stein-Hudson Associates, Inc. | 12/30/14 | Traffic Engineering | NGV079 |
| | 4/28/15 | Traffic Engineering | NGV079 |
| Harry Feldman, Inc., dba Feldman Land Surveyors | 02/06/15 | Surveying | NGV071 |
| | 05/10/17 | Surveying – DC Harbor Walk | NGV071 |
| | 12/28/17 | Surveying – Mystic River Pedestrian Bridge | NGV071 |
| In Order Business Solutions | 07/20/17 | Consultant – Diversity Reporting – Offsite Infrastructure | NGV397 |
| JBA Consulting Engineers | 09/30/15 | A/V Engineering Services | NGV642 |
| J. Derenzo Company | 10/23/17 | Off-site Roadway Improvements – Route 16 Improvements | NGV870 |
| | 09/24/18 | GC - Lower Broadway Community Parking | NGV870 |
| | 09/25/18 | GC - DCR Harbor Walk Connector | NGV870 |
| Jacobs Consultants Inc. | 12/04/14 | Executive Architect | NGV181 |
| John A. Martin & Associates of Nevada, Inc. | 07/29/16 | Structural Expansion Joint Review | NGV919 |
| John Lyons Systems - Moonlighting | 05/09/16 | A/V Engineering Services | NGV805 |
| Koncerted LLC | 11/11/16 | Low Voltage Project Oversight | NGV1070 |
| Lifescapes International, Inc. | 02/03/15 | Landscape Architect | NGV151 |
| Lighting Design Alliance | 10/29/15 | Design Consultant – Interior Lighting – | NGV439 |

| | | | |
|------------------------------------------------------------|------------|----------------------------------------------------------------------|---------|
| | | Food and Beverage/Public Areas | |
| | 05/11/16 | Design Consultant – Interior Lighting – Meeting and Convention Areas | NGV439 |
| Halifax Security Inc. dba M. Malia & Associates | 01/23/15 | Security and Surveillance Consulting | NGV123 |
| M. Arthur Gensler Jr. & Associates | 03/13/18 | Design Consultant – Retail Area | NGV063 |
| Medcor, Incorporated | 08/31/16 | On-site Safety Services Program | NGV851 |
| Michael Hong Architects, Inc. | 12/11/14 | Architectural Design Services | NGV206 |
| Musgrove Engineering P.A. | 07/13/2017 | Engineering Consultant – Snow Melt System Design | Exempt |
| National Grid | 04/11/16 | Relocation of Utilities – Service Road | Exempt |
| | 06/08/16 | Relocation of Gas Main – Main Site | |
| Nobis Engineering Inc. | 01/22/18 | Geotechnical Engineering – DCR Harborwalk Connector | NGV1440 |
| Oguz Cem Yazici | 3/23/16 | Construction Consultant – Scheduling | NGV801 |
| One Call Facility Services, LLC | 12/28/17 | Facility Services – WBH MBTA Warehouse | NGV1416 |
| PMA Consultants, LLC | 03/21/17 | Construction Consultant – Contractor Auditing | NGV1185 |
| | 09/21/18 | Construction Consultant – Offsite Roadway Improvements | NGV1185 |
| Pasek Corporation | 11/29/17 | Security System Design & Install – WBH MBTA Warehouse | NGV257 |
| Quench USA, Inc. | 05/31/17 | Water Service | NGV317 |
| RF Networks | 11/12/15 | Communication Systems Specifications | NGV688 |
| Ryan Biggs Clark Davis Engineers | 10/29/15 | Structural Peer Review of Jacobs Drawings | NGV508 |
| SAAM Architecture LLC | 10/13/17 | Design Consultant – Sundries Store | NGV1347 |
| SJ Lighting Inc. | 11/03/16 | Theatrical Engineering and Special Effects | NGV1111 |
| SPS New England Inc. | 10/06/17 | GC – Dredging and Sediment Remediation | NGV1316 |
| | 10/17/17 | Off-site Roadway Improvements – Lower Broadway | NGV1316 |
| Shadley Associates P.C. | 05/08/17 | Landscape Architect – DCR Harbor Walk | NGV1602 |
| Sound Investment Audio | 11/03/16 | Audio Design | NGV1129 |
| Suffolk Construction Company, Inc. | 01/08/16 | Construction Management | NGV163 |
| The Vertex Companies, Inc. | 06/21/17 | Environmental Consulting – DCR Harbor Walk | NGV609 |
| | 06/30/17 | Environmental Site Assessment – Offsite Infrastructure | NGV609 |
| TRC Environmental Corporation | 09/30/15 | Construction Consultant - Building Demolition | NGV067 |
| Vanasse & Associates, Inc. | 02/06/15 | Supplemental Final Environmental Impact Report - Transportation | NGV066 |
| Vermuelens, Inc. | 02/03/16 | Construction Consultant – Construction Cost Analysis | NGC072 |
| Vicente Wolf Associates | 05/22/15 | Design Consultant – F&B | NGV283 |
| WES Construction Corporation | 11/16/16 | MBTA Maintenance Facility Improvements | NGV948 |
| Yesco | 03/13/18 | Design Consultant – F&B Signage | NGV724 |

Appendix 3

Permits As of September 30, 2017

Reference 205 CMR 135.02(6)

| Agency Governing Legal Authority (Statute/Regulation/Ordinance) | Permit, Review, or Approval | Date Application Submitted or Estimated Anticipated Application Date | Maximum Agency Decision Time Maximum Effective Period (if provided in applicable statute, regulation or ordinance) |
|---------------------------------------------------------------------------------------------------------------------------------------------------------------------------------------------------------------------|-------------------------------------------------|--------------------------------------------------------------------------------------------------------------------------------------------------------------------------------------------------------------------------------------------------------------------------------------------------------------------------------------------------------------------------------------------------------------------|--------------------------------------------------------------------------------------------------------------------------------------------------------------------------------------------------------------------------------------------------------------------------------------------------------------------------------------|
| Federal | | | |
| Federal Aviation Administration (FAA) 49 U.S.C. Subtitle VII, Aviation Programs, Part A and B; 14 CFR 77, Subpart D; Order JO 7400.2J, Procedures for Handling Airspace Matters, Ch. 7 Determinations | Determination Regarding Air Navigation | <u>Building</u> : Received January 9, 2016, Notice of Actual Construction or Alteration filed June 26, 2018. <u>Cranes</u> : Cranes 1 & 2 received August 18, 2016 Cranes 3-8 received August 11, 2016. January 29, 2018 received extension. Notice of Actual Construction or Alteration filed <u>Podium</u> : Received August 10, 2016. Notice of Actual Construction or Alteration filed February 9, 2018. | Determination is effective for 18 months and may apply for one 18-month renewal. |
| U.S. Army Corps of Engineers (ACOE) Section 10 of Federal Rivers and Harbors Act; 33 USC s. 403; 33 CFR Parts 322, 325 | Work in Navigable Waters (Section 10) Permit | <u>Project</u> : Received December 12, 2016 | No fixed maximum decision time. For individual permits, ACOE will be guided by the target schedule of decision within 60 days of receiving completed application, subject to receipt of any additional information needed for decision and processes required by other state and federal laws (such as CZM Act) to precede decision. |
| U.S. Army Corps of Engineers (ACOE) Section 404 of Federal Clean Water Act; 33 USC s. 1344; 33 CFR Parts 323, 325 | Clean Water Act (Section 404) Individual Permit | <u>Project</u> : Received December 12, 2016 | Individual permits for a permanent structure or activity typically do not expire, but may specify when the work must start - usually within 1 year of issuance. |
| U.S. Army Corps of Engineers (ACOE) Section 404 of Federal Clean | Clean Water Act (Section 404) Individual Permit | <u>Sediment Remediation</u> : Permit Modification Received August 31, 2017, Revised September 11, 2017 | ACOE modified the resort permit to allow for sediment remediation activity. |

| | | | |
|---------------------------------------------------------------------------------------------------------------------------------------------------------------------------------------------------------------------------------------------|---------------------------------------------------------------------------------------------------------------------------|--------------------------------------------------------------------------------------------------------------------------------------------------------------------------------------------------------------|-----------------------------------------------------------------------------------------------------------------------------------------------------------------------------------------------------------------------|
| Water Act; 33 USC s. 1344; 33 CFR Parts 323, 325 | | Modification Received June 25, 2018 | |
| U.S. Environmental Protection Agency (EPA) Federal Clean Water Act Section 402(p); 33 USC s. 1342(p); 40 CFR 122.26; NPDES Construction General Permit, Effective February 16, 2012 | National Pollutant Discharge Elimination System (NPDES) Construction General Permit (CGP) NOI (for stormwater management) | On-site: April 6, 2016 On-site under 2017 CGP: May 23, 2017 | Decision time for CGP and RGP: effective 14 days after NOI submittal to and acknowledged by EPA. The CGP expired on February 16, 2017, a new NOI for those activities covered by the CGP was filed under the new CGP. |
| U.S. Environmental Protection Agency (EPA) Federal Clean Water Act Section 402(a), 33 USC s. 1342(a); 40 CFR 122.28; 314 CMR 4.00; NPDES Remediation General Permit, NPDES Permit No. MAG910000, Effective September 10, 2010 | NPDES Remediation General Permit (RGP) (for construction dewatering) | NOI Submitted May 25, 2016, 10 day waiting period ended June 9, 2016 NOI under 2017 RGP: Submitted July 6, 2017, Authorization received August 3, 2017. Notice of Termination submitted March 7, 2018. | When the RGP expired on September 10, 2015, those activities covered by the RGP filed a NOI under the new RGP. |

| State | | | |
|------------------------------------------------------------------------------------------------------------------------------------------------|------------------------------------------------------|------------------------------------------------------------------------------------------------------------------------------------------------------------------------------------------------------------------------------------------------------------------------------------------------------------------------------------------------------------|--------------------------------------------------------------------------------------------------------------------------------------------------------------------------------------------------------------------------------------------------------------------------------------------------------------------------------------------------------------------------------------------------------------------------------------------------------------------------------------------------------------------------------------------------------------------------------|
| Executive Office of Energy and Environmental Affairs Massachusetts Environmental Policy Act; MGL c. 30 ss. 61-62I; 301 CMR 11.00 | Massachusetts Environmental Policy Act (MEPA) Review | <u>Project:</u> Certificate on EENF received 11/26/13 Certificate on DEIR received 2/21/14 Certificate on FEIR received 8/15/14 Certificate on SFEIR Received 4/03/15 Certificate on SSFEIR Received 8/28/15 <u>Sediment Remediation:</u> Notice of Project Change filed 2/28/17, Certificate received 4/7/17 | Secretary determines whether a Draft EIR, or Final EIR, as applicable, is adequate within 37 days of notice of availability of the EIR in the Environmental Monitor. A project that has not commenced either construction, or other project development activities (including final design, property acquisition, or marketing), within five years of notice of availability of Final EIR must file a Notice of Project Change. Secretary determines whether a subsequent filing is required. MEPA review is complete if no further filings are required. |
| Executive Office of Energy and Environmental Affairs MGL c. 21A ss. 2 and 4A; 301 CMR 23.00 | Municipal Harbor Plan | Submitted on 10/16/13 Approved on 2/10/14 | After publication of proposed Plan in <i>Environmental Monitor</i> and 30 day public comment period, Secretary has 60 days to consult with |

| | | | |
|------------------------------------------------------------------------------------------------------------------------------------------------------------------------------------|-----------------------------------------------------|------------------------------------------------------------------------------------------------------------------------------------------------------------------------------------------------------------------------------------------------------------------------------------------------------------------------------------------------------------------------------------------------------------------------------------|----------------------------------------------------------------------------------------------------------------------------------------------------------------------------------------|
| | | | municipality proposing the Plan and other applicable agencies/entities, and 21 days thereafter to issue a written decision on the MHP. |
| Massachusetts Department of Environmental Protection (MassDEP) MGL c. 91 ss. 12-14; 310 CMR 9.00 | Chapter 91 Waterways Determination of Applicability | Determination of Applicability re Chapter 91 jurisdictional boundaries received on July 29, 2013 | |
| Massachusetts Department of Environmental Protection (MassDEP) MGL c. 91 ss. 12-14; 310 CMR 9.00 | Chapter 91 Waterways License | <u>Project:</u> Submitted August 19, 2015 License received August 3, 2016 Minor Project Modification (MPM) #1 received February 28, 2017 MPM #2 received March 29, 2017 MPM #3 filed March 16, 2018 <u>Sediment Remediation:</u> Submitted May 2017, License Received September 25, 2017 <u>DCR Harborwalk Connector:</u> Filed April 23, 2018. License Received September 21, 2018 | Licenses are issued for a fixed term; the standard term is 30 years but a license may be issued for an extended term (maximum of 99 years) if certain additional requirements are met. |
| MassDEP MGL c. 21 s. 43; 310 CMR 7.12 | Compliance Certification for Stationary Engine | TBD | Required for CHP and generator |
| MassDEP MGL c. 111 ss. 142A-142E; 310 CMR 7.09 | Notification of Construction and Demolition | TBD | Effective 10 working days after filing of notification. |
| MassDEP Section 401 of Federal Clean Water Act, 33 USC s. 1341; Massachusetts Clean Waters Act, MGL c. 21 ss. 26 et seq.; 314 CMR 9.00 (which cites to 310 CMR 4.00) | Water Quality Certification (401) | <u>Project:</u> Submitted September 8, 2015 Approval received January 22, 2016 Amendment #1 received February 2017 Amendment #2 received June 2017 <u>Sediment Remediation:</u> | Standard MassDEP technical review period is 120 days (24 days for determination of administrative completeness and 96 days for technical review). No fixed maximum decision time. |

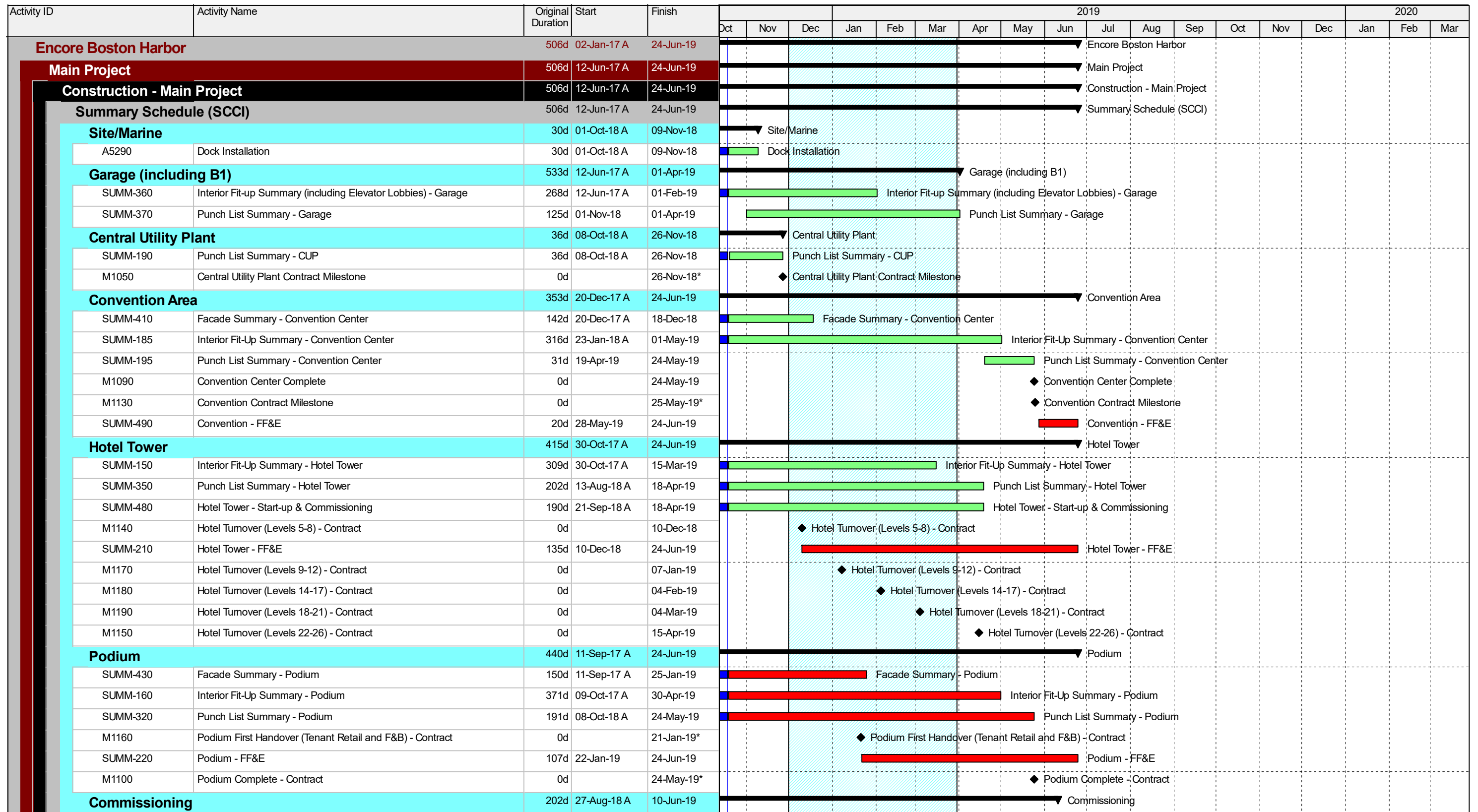
| | | | |
|---------------------------------------------------------------------------------------------------------------------------------------------------------------------------------------------------------------------|-------------------------------------------------------------------------------------------------------|-------------------------------------------------------------------------------------------------------------------------------------------------------------------------------------------------------------------------------------------------------------------------------------------------------------------------------------|-----------------------------------------------------------------------------------------------------------------------------------------------------------------------------------------------------------------------------------------------------------------------------------------------|
| | | Approval Received August 25, 2017 Amendment #1 received June 18, 2018 | |
| MassDEP MGL c. 131 s. 40; 310 CMR 10.00 | Wetlands Superseding Order of Conditions | Only in event of appeal of Order of Conditions issued by Everett Conservation Commission | Per 310 CMR 10.05 (7)(f) Issued within 70 days of request for superseding action (unless MassDEP requests additional information). |
| MassDEP Bureau of Waste Site Cleanup/Massachusetts Contingency Plan (MCP) MGL c. 21E; 310 CMR 40.000 | (Submittals by Licensed Site Professional on behalf of Site Owner - do not need DEP approval) | <u>Landside Remediation:</u> RAM Plan submitted May 2015; PIP process underway RAM Modifications: October 2016, November 2016, February 2017, November 2017 <u>Sediment Remediation:</u> Phase II submitted December 2015 Revised Phase II submitted December 30, 2016 Phase III/IV submitted June 2017 | Agency decision time frame N/A under MCP privatized program. |
| Massachusetts Water Resources Authority (MWRA) Chapter 372 of the Acts of 1984, s. 8(m); 360 CMR 10.000 | Section 8(m) Permit (to cross or construct within an MWRA easement) | <u>Project:</u> 8M permits were submitted to MWRA and received. in November, 2017 | |
| Massachusetts Office of Coastal Zone Coastal Zone Management (CZM) 301 CMR 20.00, M.G.L. c. 21A, §§2 and 4A Coastal Zone Management Act of 1972, 16 U.S.C. 1451 et seq., 15 CFR §§ 923 and 930 | Federal Consistency Certification | <u>Project:</u> Received August 12, 2016 | |
| Massachusetts Historical Commission (MHC) MGL c. 9 ss. 26 et seq.; 950 CMR 71.00 | Review of project relative to potential effects on State Register historic/ archaeological resources. | Review Completed | Within 30 days of receipt of a completed Project Notification Form or ENF, the MHC will determine whether further information is needed and/or consultation is needed because the project may affect State Register properties. Beyond initial period, no other maximum decision times apply. |

| | | | |
|-----------------------------------------------------------------------------------------------------------------|---------------------------------------------------------------------------------------------------|---------------------------------------------------------------------------------------------------------------------------------------------------------------------------------------------------------------------------------------------------------------------------------------------------------------------------------------------------------------------------|-----------------------------------------------------------------------------------------------------------------------------------------------------------------------------------------------------------------------------------------------------------------------------------------------------------------------------------------------------------------------------------------------------------------------------------------------------------------------------------------------------------------------------|
| Board of Underwater Archaeological Resources (BUAR) M.G.L. c. 6, ss. 179 and 180; 312 CMR 2.00 | Review of waterside activities | <u>Project:</u> Review Completed <u>Sediment Remediation:</u> Review Completed under NPC | |
| Massachusetts Department of Transportation (MassDOT) MGL c. 81 s. 21, 720 CMR 13.00 | Non-Vehicular Access Permit - Off-site roadway improvements | MassDOT highway access permit applications have been submitted for all applicable MassDOT roadways that will be improved. Access permits have been received for the Route 16 improvements. The access permit for Sullivan Square 93 off ramp improvements was submitted and comments have been received and are being addressed. The permit was received on May 29, 2018. | MassDOT completes technical reviews of the Access Permit application in 75 business days (35 business days following receipt of the 25% design submission, 20 business days following receipt of the 75%/100% design submission, and 20 business days following receipt of the PS&E submission.) Following technical review and approval, Section 61 Finding, and completion of MHC review and Mass. Wetlands Protection Act permitting, the MassDOT permit is issued 5 to 7 business days following final design approval. |
| Massachusetts Department of Transportation (MassDOT) MGL c. 40 s. 54A | Consent to issuance of building permit for construction on land formerly used by railroad company | <u>Project:</u> Approval issued May 2, 2016 | |
| Massachusetts Department of Transportation (MassDOT) MGL c. 161A s. 5(b) | MBTA Land Disposition and Easement Agreements | Issued November 2016 | |

| Local | | | |
|------------------------------------------------------------------------------------------------------------------------------------------------------------------------------------------------------|------------------|-------------------------------------------------------------------------------------------------------------|---------------------------------------------------------------------------------------------------------------------------------------------------------------------------------------------------------------|
| City of Boston (Off-site Roadway) Public Improvement Commission (PIC) Boston Transportation Department (BTD) Revised Ordinances of City of Boston of 1961, Ch.21, Sect. 36 | Approvals | Filed January 30, 2015. All PIC permits have been received. | |
| Everett Planning Board M.G.L. 40A, as amended, and Everett Zoning Ordinance, Section 28A, Resort Casino Overly District (RCOD) in Lower Broadway Economic Development District (LBEDD) | Site Plan Review | <u>Project:</u> Approval Received October 14, 2015 <u>Access Road:</u> Approval Received May 5, 2016 | Site Plan Review decisions shall be issued within 180 calendar days after filing of a completed application. Everett Zoning Ordinance, Sec. 28A(10)(B)(iii). Everett has accepted expedited permitting |

| | | | |
|----------------------------------------------------------------------------------------------------------------------------------------------------------------|-----------------------------------------------------------------------------------------------------------------------------------------------------------------|----------------------------------------------------------------------------------------------------------------------------------------------------------------------------------------------------------------------------------------------------------------------------------------------------------------------------------------------------------------------------------------------------------------------------------------------------------------------------------------------------------------------------------------------------------------------------------|--------------------------------------------------------------------------------------------------------------------------------------------------------------------------------------------------------------------------------------------------------------------------------------------------------------------------------------------------|
| | | | processes for Priority Development Sites pursuant to MGL c. 43D. All lots located in the LBEDD and RCOD are Priority Development Sites, Everett Zoning Ordinance Section 28A(10)(B). |
| Everett Conservation Commission Everett City Charter, c. 2, Article III, Division 7, Section 2-252 M.G.L. c. 131 §40; 310 CMR 10.00 | Wetlands Order of Conditions | <u>Project:</u> Order of Conditions issued September 24, 2015, Amended Order of Conditions Received July 13, 2017 Amended Order of Conditions Received June 21, 2018 Extension to Order of Conditions Received June 21, 2018 <u>Landside Remediation:</u> Order of Conditions Issued 2015 <u>Sediment Remediation:</u> Received June 2017 Amended Order of Conditions Received May 7, 2018 <u>DCR Harborwalk Connector (Phase 1):</u> Received May 17, 2018 <u>DCR Harborwalk Connector (Phase 2):</u> Received August 16, 2018 | Decision time (about 42 days plus duration of public hearing which may consist of more than one ConComm meeting): - A public hearing must be held within 21 days of receiving NOI. - Orders of Conditions issued within 21 days of the close of the public hearing. Orders of Conditions are valid for 3 years unless extended. |
| Everett Fire Department Rev. Ordinance 1976, Pt.2, Ch.7, §33 Everett City Charter, Chapter 8, Article I, §2-252 M.G.L. c. 148 §10A | Review of Plans Fire Suppression System Installation Fuel Storage Permit LP Gas Storage Permit Underground Storage Tank Removal Permit (Commercial) | <u>Review of Plans:</u> Ongoing <u>Fire Suppression System Installation:</u> In process <u>Fuel Storage Permit:</u> Received June 25, 2018 | |
| Everett Health Department M.G.L. c. 140 | Food Establishment Permit Application | TBD | Permits are annual, and expire May 31st of each year. |
| Everett Licensing Commission Victualler License: M.G.L. c. 140 | Alcohol License Common Victualler License | TBD | |
| Everett Public Works | Sewer Connection Permit Water Connection Permit | TBD TBD | |

| | | | |
|--------------------------------------------------------------------------------------------------------------|--------------------------------------------------------------------------------------------------------------------------------------------------------------------------------------------------------|---------------------------------------------------------------------------------------------------------------------------------------------------------------------------------------------------|-------------------------------------------------------------------------------------------------------------------------------------------------------------------------------------------------------------|
| <p>Sewer: M.G.L., c. 83; Everett City Charter, Chapter 15</p> <p>Water: Everett City Charter, Chapter 20</p> | | | |
| <p>Everett Building Department</p> <p>State Building Code, 780 CMR 105.3.1</p> | <p>Building Permit</p> <ul style="list-style-type: none"> • Plumbing • Gas • Electrical • Wire • Trench • Mechanical • Foundation | <p>Foundation Permit May 2, 2016</p> <p>Building Permit December 15, 2016</p> | <p>30 days from submission of completed application. Specific permits (plumbing, gas, etc.) to be requested and issued at various times during construction period within 30 days following application</p> |
| <p>Boston Conservation Commission</p> <p>M.G.L. c. 131 §40; 310 CMR 10.00</p> | <p>Wetlands Order of Conditions</p> | <p><u>Sediment Remediation:</u> Issued June 2017 Certificate of Compliance July 18, 2018</p> <p><u>Alford Street Pedestrian and Landscape Improvements:</u> Received May 16, 2018</p> | |

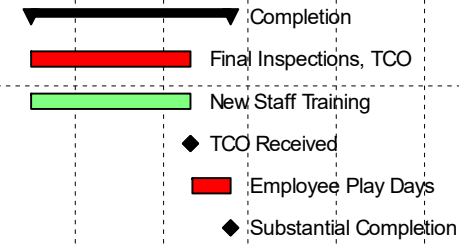


Data Date: 19-Oct-18
 Print Date: 23-Oct-18
 Page 1 of 5

Encore Boston Harbor
 Project Master Schedule
 Schedule Update #44



| Activity ID | Activity Name | Original Duration | Start | Finish | 2019 | | | | | | | | | | | | 2020 | | | | | | | | | | | |
|-------------------|---------------------------------------|-------------------|-------------|-----------|-----------------------------|-----|-----|-----|-----|-----|-----|-----|-----|-----|-----|-----|------|-----|-----|-----|-----|-----|--|--|--|--|--|--|
| | | | | | Oct | Nov | Dec | Jan | Feb | Mar | Apr | May | Jun | Jul | Aug | Sep | Oct | Nov | Dec | Jan | Feb | Mar | | | | | | |
| SUMM-200 | Start-up, Commissioning and Punchlist | 202d | 27-Aug-18 A | 10-Jun-19 | [Red bar from Oct to Jun] | | | | | | | | | | | | | | | | | | | | | | | |
| Completion | | 50d | 15-Apr-19 | 24-Jun-19 | [Cyan bar from Apr to Jun] | | | | | | | | | | | | | | | | | | | | | | | |
| A2810 | Final Inspections, TCO | 40d | 15-Apr-19 | 10-Jun-19 | [Red bar from Apr to Jun] | | | | | | | | | | | | | | | | | | | | | | | |
| A3290 | New Staff Training | 40d | 15-Apr-19 | 10-Jun-19 | [Green bar from Apr to Jun] | | | | | | | | | | | | | | | | | | | | | | | |
| A10110 | TCO Received | 0d | | 10-Jun-19 | | | | | | | | | | | | | | | | | | | | | | | | |
| A10130 | Employee Play Days | 10d | 11-Jun-19 | 24-Jun-19 | | | | | | | | | | | | | | | | | | | | | | | | |
| A12360 | Substantial Completion | 0d | | 24-Jun-19 | | | | | | | | | | | | | | | | | | | | | | | | |



| Activity ID | Activity Name | Original Duration | Start | Finish | 2019 | | | | | | | | | | | | 2020 | | | | | |
|--------------------------------------------|------------------------------------------|-------------------|------------|-----------|------|-----|-----|-----|-----|-----|-----|-----|-----|-----|-----|-----|------|-----|-----|-----|-----|-----|
| | | | | | Oct | Nov | Dec | Jan | Feb | Mar | Apr | May | Jun | Jul | Aug | Sep | Oct | Nov | Dec | Jan | Feb | Mar |
| Service Road and Utilities Projects | | 25d | 01-Apr-19 | 03-May-19 | | | | | | | | | | | | | | | | | | |
| Service Road Construction | | 25d | 01-Apr-19 | 03-May-19 | | | | | | | | | | | | | | | | | | |
| 12120 | Final Roadway Top, Striping, Landscaping | 25d | 01-Apr-19* | 03-May-19 | | | | | | | | | | | | | | | | | | |

| Activity ID | Activity Name | Original Duration | Start | Finish | 2019 | | | | | | | | | | | | 2020 | | |
|--------------------------------------------------------------------------|-----------------------------------------------------------------------------|-------------------|-------------|------------|---------------------------------------------------------------------------------------------|-----|-----|-----|-----|-----|-----|-----|-----|-----|-----|-----|------|-----|-----|
| | | | | | Oct | Nov | Dec | Jan | Feb | Mar | Apr | May | Jun | Jul | Aug | Sep | Oct | Nov | Dec |
| Off-Site Transportation Improvements | | 454d | 02-Jan-17 A | 10-Jun-19 | Off-Site Transportation Improvements | | | | | | | | | | | | | | |
| Milestone | | 276d | 13-Oct-17 A | 31-May-19 | Milestone | | | | | | | | | | | | | | |
| Package #1 (Lower Broadway and Truck Route) | | 260d | 13-Oct-17 A | 31-May-19 | Package #1 (Lower Broadway and Truck Route) | | | | | | | | | | | | | | |
| AMS.800.1140 | CP#1 Construction (Lower Broadway and Truck Route) | 260d | 13-Oct-17 A | 31-May-19 | CP#1 Construction (Lower Broadway and Truck Route) | | | | | | | | | | | | | | |
| Package #2 (Santilli, Sweetser, Wellington, Bell and C/M Signals) | | 251d | 09-Nov-17 A | 23-Jan-19 | Package #2 (Santilli, Sweetser, Wellington, Bell and C/M Signals) | | | | | | | | | | | | | | |
| AMS.800.1160 | CP#2 Construction (Santilli Circle) | 251d | 09-Nov-17 A | 23-Jan-19 | CP#2 Construction (Santilli Circle) | | | | | | | | | | | | | | |
| AMS.800.1220 | CP#2 Construction (Sweetser Circle) | 251d | 09-Nov-17 A | 23-Jan-19 | CP#2 Construction (Sweetser Circle) | | | | | | | | | | | | | | |
| AMS.800.1230 | CP#2 Construction (Wellington Circle) | 251d | 09-Nov-17 A | 23-Jan-19 | CP#2 Construction (Wellington Circle) | | | | | | | | | | | | | | |
| AMS.800.1240 | CP#2 Construction (Bell Circle) | 251d | 09-Nov-17 A | 23-Jan-19 | CP#2 Construction (Bell Circle) | | | | | | | | | | | | | | |
| AMS.800.1250 | CP#2 Construction (Chelsea/Medford Signals) | 251d | 09-Nov-17 A | 23-Jan-19 | CP#2 Construction (Chelsea/Medford Signals) | | | | | | | | | | | | | | |
| Package #3 (Wellington and Malden Stations) | | 37d | 30-Jul-18 A | 15-Jan-19 | Package #3 (Wellington and Malden Stations) | | | | | | | | | | | | | | |
| AMS.800.1180 | CP#3 Construction (Wellington and Malden Stations) | 37d | 30-Jul-18 A | 15-Jan-19 | CP#3 Construction (Wellington and Malden Stations) | | | | | | | | | | | | | | |
| Package #4 (Sullivan Square) | | 255d | 01-Nov-17 A | 15-Feb-19 | Package #4 (Sullivan Square) | | | | | | | | | | | | | | |
| AMS.800.1300 | CP#4 Construction (Sullivan Square) | 255d | 01-Nov-17 A | 15-Feb-19 | CP#4 Construction (Sullivan Square) | | | | | | | | | | | | | | |
| Land Transfers, Easements | | 454d | 02-Jan-17 A | 10-Jun-19 | Land Transfers, Easements | | | | | | | | | | | | | | |
| Proposed Dexter Realignment (CP #1) | | 423d | 02-Jan-17 A | 25-Apr-19 | Proposed Dexter Realignment (CP #1) | | | | | | | | | | | | | | |
| 14950 | Previous Owner/Tenant Legal Agreement Reached (TBD) | 110d | 02-Jan-17 A | 28-Mar-19 | Previous Owner/Tenant Legal Agreement Reached (TBD) | | | | | | | | | | | | | | |
| 14960 | Tenant Vacates (TBD) | 20d | 29-Mar-19 | 25-Apr-19 | Tenant Vacates (TBD) | | | | | | | | | | | | | | |
| Final Planning Board Approval | | 40d | 15-Apr-19 | 10-Jun-19 | Final Planning Board Approval | | | | | | | | | | | | | | |
| 14970 | Final Planning Board Approval | 40d | 15-Apr-19 | 10-Jun-19* | Final Planning Board Approval | | | | | | | | | | | | | | |
| Construction Package #1 - Lower Broadway & Truck Route | | 380d | 13-Oct-17 A | 31-May-19 | Construction Package #1 - Lower Broadway & Truck Route | | | | | | | | | | | | | | |
| Lower Broadway & Truck Route | | 380d | 13-Oct-17 A | 31-May-19 | Lower Broadway & Truck Route | | | | | | | | | | | | | | |
| CP#1 Construction | | 380d | 13-Oct-17 A | 31-May-19 | CP#1 Construction | | | | | | | | | | | | | | |
| ALB.900.1050 | CP#1 - Construction (Lower Broadway and Truck Route) 440 days | 440d | 13-Oct-17 A | 27-Dec-18 | CP#1 - Construction (Lower Broadway and Truck Route) 440 days | | | | | | | | | | | | | | |
| ALB.900.1250 | Dexter and Robin Streets | 140d | 16-Feb-18 A | 31-May-19 | Dexter and Robin Streets | | | | | | | | | | | | | | |
| ALB.900.1080 | Broadway East/West | 97d | 16-Mar-18 A | 14-Jan-19 | Broadway East/West | | | | | | | | | | | | | | |
| ALB.900.1110 | Intersections, Landscaping, Pavements | 93d | 10-Sep-18 A | 31-May-19 | Intersections, Landscaping, Pavements | | | | | | | | | | | | | | |
| ALB.900.1090 | Broadway Center Medians North/South | 50d | 05-Nov-18 | 10-May-19 | Broadway Center Medians North/South | | | | | | | | | | | | | | |
| ALB.900.1070 | CP #1 Completed | 0d | | 31-May-19 | ◆ CP #1 Completed | | | | | | | | | | | | | | |
| Construction Package #2 - Route 16 | | 306d | 09-Nov-17 A | 23-Jan-19 | Construction Package #2 - Route 16 | | | | | | | | | | | | | | |
| CP#2 Construction | | 306d | 09-Nov-17 A | 23-Jan-19 | CP#2 Construction | | | | | | | | | | | | | | |
| ALB.900.1040 | CP#2 - Construction (Santilli, Wellington, Sweetser, Bell Circles, Chelsea) | 440d | 09-Nov-17 A | 23-Jan-19 | CP#2 - Construction (Santilli, Wellington, Sweetser, Bell Circles, Chelsea/Medford Signals) | | | | | | | | | | | | | | |
| ALB.900.1190 | Route 16 Side Streets | 180d | 09-Nov-17 A | 26-Oct-18 | Route 16 Side Streets | | | | | | | | | | | | | | |
| ALB.900.1200 | Wellington | 160d | 17-Apr-18 A | 16-Nov-18 | Wellington | | | | | | | | | | | | | | |
| ALB.900.1210 | Santilli | 160d | 17-Apr-18 A | 16-Nov-18 | Santilli | | | | | | | | | | | | | | |
| ALB.900.1220 | Sweetser | 125d | 17-Apr-18 A | 18-Dec-18 | Sweetser | | | | | | | | | | | | | | |
| ALB.900.1230 | Bell | 135d | 21-May-18 A | 16-Nov-18 | Bell | | | | | | | | | | | | | | |

Data Date: 19-Oct-18
Print Date: 23-Oct-18
Page 4 of 5

Encore Boston Harbor
Project Master Schedule
Schedule Update #44



| Activity ID | Activity Name | Original Duration | Start | Finish | 2019 | | | | | | | | | | | | 2020 | | | | | |
|-----------------------------------------------------------------------|-----------------------------------------------------------|-------------------|-------------|------------|------|-----|-----|-----|--------------------------------------------------------------|-----|-----|-----|-----|-----|-----|-----|------|-----|-----|-----|-----|-----|
| | | | | | Oct | Nov | Dec | Jan | Feb | Mar | Apr | May | Jun | Jul | Aug | Sep | Oct | Nov | Dec | Jan | Feb | Mar |
| ALB.900.1060 | CP #2 Completed | 0d | | 23-Jan-19 | | | | | ◆ CP #2 Completed | | | | | | | | | | | | | |
| Construction Package #3 - MBTA Wellington & Malden Station | | 75d | 30-Jul-18 A | 15-Jan-19 | | | | | ▶ Construction Package #3 - MBTA Wellington & Malden Station | | | | | | | | | | | | | |
| MBTA Wellington & Malden Station | | 75d | 30-Jul-18 A | 15-Jan-19 | | | | | ▶ MBTA Wellington & Malden Station | | | | | | | | | | | | | |
| CP#3 Construction | | 75d | 30-Jul-18 A | 15-Jan-19 | | | | | ▶ CP#3 Construction | | | | | | | | | | | | | |
| AWM.900.1040 | CP#3 - Construction (Wellington and Malden MBTA Stations) | 110d | 30-Jul-18 A | 16-Nov-18 | | | | | ▶ CP#3 - Construction (Wellington and Malden MBTA Stations) | | | | | | | | | | | | | |
| AWM.900.1050 | CP #3 Completed | 0d | | 15-Jan-19* | | | | | ◆ CP #3 Completed | | | | | | | | | | | | | |
| Construction Package #4 - Sullivan Square Charlestown | | 307d | 01-Nov-17 A | 15-Feb-19 | | | | | ▶ Construction Package #4 - Sullivan Square Charlestown | | | | | | | | | | | | | |
| A7420 | Construction - Sullivan Square | 440d | 01-Nov-17 A | 15-Feb-19 | | | | | ▶ Construction - Sullivan Square | | | | | | | | | | | | | |
| ALB.900.1120 | Phase 1 - Alford Street Southbound | 150d | 27-Nov-17 A | 09-Nov-18 | | | | | ▶ Phase 1 - Alford Street Southbound | | | | | | | | | | | | | |
| ALB.900.1140 | Phase 3 - MBTA Station | 165d | 22-Jan-18 A | 14-Jan-19 | | | | | ▶ Phase 3 - MBTA Station | | | | | | | | | | | | | |
| ALB.900.1130 | Phase 2 - Alford Street Northbound | 121d | 17-Apr-18 A | 29-Nov-18 | | | | | ▶ Phase 2 - Alford Street Northbound | | | | | | | | | | | | | |
| ALB.900.1150 | Phase 4 - Maffa Way | 77d | 16-Jul-18 A | 17-Dec-18 | | | | | ▶ Phase 4 - Maffa Way | | | | | | | | | | | | | |
| ALB.900.1160 | Phase 5 - Beacham Street | 83d | 16-Jul-18 A | 17-Dec-18 | | | | | ▶ Phase 5 - Beacham Street | | | | | | | | | | | | | |
| ALB.900.1180 | Phase 8 - D Street and Spice Street | 44d | 16-Jul-18 A | 15-Nov-18 | | | | | ▶ Phase 8 - D Street and Spice Street | | | | | | | | | | | | | |
| ALB.900.1240 | Phase 7 - Main Street | 53d | 16-Jul-18 A | 26-Oct-18 | | | | | ▶ Phase 7 - Main Street | | | | | | | | | | | | | |
| ALB.900.1170 | Phase 6 - Cambridge Street | 54d | 17-Sep-18 A | 18-Dec-18 | | | | | ▶ Phase 6 - Cambridge Street | | | | | | | | | | | | | |
| A7550 | Sullivan Square Completed | 0d | | 15-Feb-19 | | | | | ◆ Sullivan Square Completed | | | | | | | | | | | | | |

Appendix 5

**Project Construction Workforce:
Women, Minority, Veteran Participation
As of September 30, 2018**

Reference 205 CMR 135.02(5)(e)

As of September 30th, 2018, 3,984,216.2 work hours had been completed on the Project Site by 6,020 individuals, with 1,339 minorities, 375 females, and 275 veterans, performing work on site.

| | # of Workers | Participation to Date (% of workforce hours) | Goal (% of workforce hours) |
|-----------------|---------------------|---------------------------------------------------------|----------------------------------------|
| Minority | 1,339 | 25.0% | 15.3% |
| Female | 375 | 6.9% | 6.9% |
| Veteran | 275 | 6.2% | 3.0% |

| LOCAL TRADE UNION | PROJECT TO DATE | | | | | | | | | | |
|--------------------------------------------|--------------------|-----------------|------------------------|------------------|--------------|---------------------|------------------|-------------|----------------------|------------------|-------------|
| | Total Hours | Total # Workers | MINORITY - Goal: 15.3% | | | FEMALE - Goal: 6.9% | | | VETERAN - Goal: 3.0% | | |
| | | | # Workers | Hours | % | # Workers | Hours | % | # Workers | Hours | % |
| Asbestos Workers Local 6 | 52,697.5 | 119 | 27 | 9,042.0 | 17.2% | 9 | 2,834.0 | 5.4% | 8 | 4,761.0 | 9.0% |
| Boilermakers Local 29 | 1,744.0 | 2 | 0 | 0.0 | 0.0% | 0 | 0.0 | 0.0% | 0 | 0.0 | 0.0% |
| Bricklayers Local 3 Eastern Mass. | 102,732.5 | 259 | 48 | 21,314.0 | 20.7% | 11 | 4,893.0 | 4.8% | 9 | 4,435.5 | 4.3% |
| Carpenters, New England | 711,396.8 | 911 | 255 | 213,676.5 | 30.0% | 55 | 42,215.0 | 5.9% | 41 | 39,262.8 | 5.5% |
| Electricians Local 103 I.B.E.W. | 819,901.3 | 914 | 147 | 145,595.3 | 17.8% | 58 | 53,920.3 | 6.6% | 48 | 48,912.0 | 6.0% |
| Electricians Local 104 I.B.E.W (Utilities) | 1,427.0 | 27 | 1 | 116.0 | 8.1% | 1 | 155.0 | 10.9% | 0 | 0.0 | 0.0% |
| Elevator Constructors Local 4 | 51,843.0 | 89 | 9 | 6,053.5 | 11.7% | 6 | 2,386.0 | 4.6% | 10 | 5,536.8 | 10.7% |
| Floorcoverers Local 2168 | 9,955.5 | 52 | 29 | 4,457.5 | 44.8% | 2 | 1,063.5 | 10.7% | 0 | 0.0 | 0.0% |
| Iron Workers Local 7 | 408,543.2 | 692 | 176 | 110,786.5 | 27.1% | 47 | 27,074.0 | 6.6% | 31 | 31,993.0 | 7.8% |
| Massachusetts Laborers | 808,587.7 | 1221 | 379 | 265,150.8 | 32.8% | 103 | 78,887.0 | 9.8% | 37 | 29,127.5 | 3.6% |
| Milw rights Local 1121 | 269.0 | 4 | 1 | 86.0 | 32.0% | 0 | 0.0 | 0.0% | 0 | 0.0 | 0.0% |
| Operating Engineers Local 4 | 273,617.5 | 461 | 59 | 42,528.0 | 15.5% | 16 | 14,268.0 | 5.2% | 27 | 27,098.5 | 9.9% |
| Operating Engineers Local 98 | 240.0 | 2 | 0 | 0.0 | 0.0% | 0 | 0.0 | 0.0% | 0 | 0.0 | 0.0% |
| Painters & Allied Trades D.C. #35 | 130,147.0 | 261 | 100 | 53,520.0 | 41.1% | 21 | 11,800.0 | 9.1% | 5 | 3,579.5 | 2.8% |
| Pledrivers Local 56 | 44,014.0 | 106 | 9 | 5,218.5 | 11.9% | 8 | 1,775.0 | 4.0% | 9 | 5,113.0 | 11.6% |
| Pipe Fitters Local 537 | 107,539.0 | 120 | 16 | 19,746.5 | 18.4% | 7 | 9,104.0 | 8.5% | 10 | 7,690.0 | 7.2% |
| Plasterers & Cement Masons Local | 63,697.5 | 212 | 47 | 11,869.0 | 18.6% | 7 | 1,451.0 | 2.3% | 5 | 245.0 | 0.4% |
| Plumbers & Gasfitters Local 12 | 163,851.5 | 218 | 29 | 26,511.5 | 16.2% | 16 | 10,666.5 | 6.5% | 13 | 14,008.0 | 8.5% |
| Roofers & Slaters Local 33 | 45,679.8 | 107 | 33 | 15,070.0 | 33.0% | 3 | 4,174.5 | 9.1% | 4 | 3,582.0 | 7.8% |
| Sheet Metal Workers Local 17 | 106,744.5 | 167 | 24 | 28,719.0 | 26.9% | 3 | 5,535.0 | 5.2% | 10 | 12,153.5 | 11.4% |
| Sheet Metal Workers Local 63 | 20.0 | 2 | 0 | 0.0 | 0.0% | 0 | 0.0 | 0.0% | 0 | 0.0 | 0.0% |
| Sprinkler Fitters Local 550 | 79,345.0 | 63 | 10 | 15,430.0 | 19.4% | 2 | 3,636.5 | 4.6% | 6 | 7,951.5 | 10.0% |
| Teamsters Local 25 | 215.0 | 10 | 0 | 0.0 | 0.0% | 0 | 0.0 | 0.0% | 2 | 11.0 | 5.1% |
| Woodframe Local 723 | 8.0 | 1 | 0 | 0.0 | 0.0% | 0 | 0.0 | 0.0% | 0 | 0.0 | 0.0% |
| Total | 3,984,216.2 | 6,020 | 1,399 | 994,890.5 | 25.0% | 375 | 275,838.3 | 6.9% | 275 | 245,460.5 | 6.2% |

| CONTRACTOR | PROJECT TO DATE | | | | | | | | | | |
|-------------------------------------------------|-----------------|-----------------|------------------------|-----------|-------|---------------------|----------|-------|----------------------|----------|--------|
| | Total Hours | Total # Workers | MINORITY - Goal: 15.3% | | | FEMALE - Goal: 6.9% | | | VETERAN - Goal: 3.0% | | |
| | | | # Workers | Hours | % | # Workers | Hours | % | # Workers | Hours | % |
| AJ Conveyer and Laundry Systems | 269.0 | 4 | 1 | 86.0 | 32.0% | 0 | 0.0 | 0.0% | 0 | 0.0 | 0.0% |
| Allegheny Contract Flooring, Inc. | 36,433.0 | 76 | 20 | 9,809.5 | 26.9% | 5 | 1,965.0 | 5.4% | 3 | 2,125.5 | 5.8% |
| All-Pro Electric, LLC | 480.0 | 4 | 0 | 0.0 | 0.0% | 0 | 0.0 | 0.0% | 0 | 0.0 | 0.0% |
| Andella Iron Inc. | 565.0 | 4 | 1 | 153.0 | 27.1% | 0 | 0.0 | 0.0% | 0 | 0.0 | 0.0% |
| Angelini Plastering, Inc. (WBE) | 9,718.5 | 20 | 3 | 2,663.0 | 27.4% | 0 | 0.0 | 0.0% | 0 | 0.0 | 0.0% |
| Anvil Steel Engineering, Inc. (M/BE) | 19,136.5 | 40 | 15 | 8,692.0 | 45.4% | 5 | 1,295.5 | 6.8% | 4 | 3,973.0 | 20.8% |
| Archer Corp | 3,436.0 | 10 | 1 | 240.5 | 7.0% | 1 | 240.5 | 7.0% | 0 | 0.0 | 0.0% |
| Atlantic Lining Company Inc | 403.0 | 9 | 6 | 328.0 | 81.4% | 0 | 0.0 | 0.0% | 0 | 0.0 | 0.0% |
| Axion Specialty Contracting | 29,956.0 | 64 | 12 | 3,561.0 | 11.9% | 5 | 880.0 | 2.9% | 5 | 2,223.0 | 7.4% |
| Back Bay Concrete Corp. (WBE) | 3,801.0 | 58 | 15 | 963.0 | 25.3% | 4 | 53.5 | 1.4% | 3 | 96.5 | 2.5% |
| BOSS Steel Inc. (WBE) | 22,036.8 | 71 | 16 | 4,196.0 | 19.0% | 3 | 1,406.0 | 6.4% | 3 | 1,399.5 | 6.4% |
| Brava Electric & Telecom, Inc. (MBE) | 1,883.5 | 4 | 2 | 1,021.8 | 54.2% | 0 | 0.0 | 0.0% | 0 | 0.0 | 0.0% |
| Brightview Landscaping Development Inc. | 15,226.0 | 44 | 17 | 7,450.0 | 48.9% | 4 | 1,640.0 | 10.8% | 0 | 0.0 | 0.0% |
| Bunting Graphics, Inc. | 6,253.7 | 16 | 4 | 2,179.0 | 34.8% | 0 | 0.0 | 0.0% | 0 | 0.0 | 0.0% |
| Capco Steel Erection Company | 11,021.0 | 27 | 3 | 1,202.5 | 10.9% | 1 | 183.0 | 1.7% | 0 | 0.0 | 0.0% |
| Capital Carpet and Flooring Specialists, Inc. - | 9,955.5 | 52 | 29 | 4,457.5 | 44.8% | 2 | 1,063.5 | 10.7% | 0 | 0.0 | 0.0% |
| Cashman Dredging & Marine Contracting | 200.0 | 2 | 0 | 0.0 | 0.0% | 0 | 0.0 | 0.0% | 0 | 0.0 | 0.0% |
| Cavalieri Construction Company, Inc. | 5,247.0 | 28 | 6 | 2,428.5 | 46.3% | 0 | 0.0 | 0.0% | 1 | 531.0 | 10.1% |
| Century Drywall, Inc. | 363,553.8 | 415 | 170 | 140,086.0 | 38.5% | 27 | 22,190.5 | 6.1% | 8 | 12,649.3 | 3.5% |
| Chapman Construction Group, Inc. (WVBE) | 14,028.0 | 21 | 3 | 1,681.5 | 12.0% | 4 | 3,403.5 | 24.3% | 2 | 1,820.0 | 13.0% |
| Coastal Marine Construction | 2,223.5 | 15 | 0 | 0.0 | 0.0% | 1 | 84.0 | 3.8% | 1 | 116.5 | 5.2% |
| Coghlin Electrical Contractors, Inc. (WBE) | 375,892.0 | 244 | 37 | 61,029.5 | 16.2% | 13 | 20,421.5 | 5.4% | 13 | 20,280.0 | 5.4% |
| Collins Overhead Door Inc. | 474.2 | 3 | 0 | 0.0 | 0.0% | 0 | 0.0 | 0.0% | 0 | 0.0 | 0.0% |
| Component Assembly Systems, Inc. | 21,325.0 | 54 | 8 | 3,568.0 | 16.7% | 2 | 960.0 | 4.5% | 3 | 1,751.0 | 8.2% |
| Composite Company, Inc. | 470.0 | 6 | 2 | 278.0 | 59.1% | 0 | 0.0 | 0.0% | 0 | 0.0 | 0.0% |
| Construction Drilling, Inc. | 499.5 | 4 | 0 | 0.0 | 0.0% | 0 | 0.0 | 0.0% | 0 | 0.0 | 0.0% |
| Costa Brothers Masonry, Inc. | 37,735.5 | 77 | 16 | 9,152.5 | 24.3% | 2 | 1,986.0 | 5.3% | 1 | 24.0 | 0.1% |
| Cross Country Food Service Equipment Installers | 1,729.5 | 10 | 0 | 0.0 | 0.0% | 0 | 0.0 | 0.0% | 1 | 456.5 | 26.4% |
| D.W. White Construction | 16,642.5 | 53 | 6 | 2,778.0 | 16.7% | 4 | 1,432.0 | 8.6% | 1 | 924.0 | 5.6% |
| Dagle Electrical Construction Corporation (WBE) | 4,600.0 | 52 | 5 | 510.0 | 11.1% | 1 | 48.0 | 1.0% | 2 | 84.5 | 1.8% |
| Daniel Marr and Son Co. | 148,292.0 | 201 | 28 | 24,886.0 | 16.8% | 14 | 7,342.5 | 5.0% | 9 | 11,192.0 | 7.5% |
| DeLucca Fence Company (WBE) | 1,026.0 | 37 | 8 | 159.0 | 15.5% | 2 | 24.0 | 2.3% | 1 | 24.0 | 2.3% |
| Dependable Masonry Construction Co. | 848.5 | 6 | 2 | 203.0 | 23.9% | 0 | 0.0 | 0.0% | 0 | 0.0 | 0.0% |
| Don Martin Corporation (MBE) | 1,323.5 | 29 | 12 | 459.0 | 34.7% | 0 | 0.0 | 0.0% | 1 | 22.0 | 1.7% |
| Draper Elevator Cab Co, Inc. | 94.5 | 2 | 0 | 0.0 | 0.0% | 0 | 0.0 | 0.0% | 2 | 94.5 | 100.0% |
| D's Welding | 438.0 | 9 | 1 | 69.0 | 15.8% | 0 | 0.0 | 0.0% | 0 | 0.0 | 0.0% |
| Duggan & Marcon, Inc. | 764.0 | 1 | 0 | 0.0 | 0.0% | 0 | 0.0 | 0.0% | 0 | 0.0 | 0.0% |
| E.H. Marchant Co. Inc. | 4,416.0 | 13 | 1 | 801.0 | 18.1% | 1 | 160.0 | 3.6% | 1 | 220.0 | 5.0% |
| E.M. Duggan, Inc. | 137,113.5 | 152 | 23 | 22,708.0 | 16.6% | 13 | 9,330.5 | 6.8% | 12 | 15,327.0 | 11.2% |
| East Coast Fireproofing Co | 6,837.0 | 20 | 4 | 1,094.0 | 16.0% | 2 | 169.0 | 2.5% | 3 | 589.0 | 8.6% |
| East Coast Interiors | 959.0 | 8 | 0 | 0.0 | 0.0% | 1 | 202.0 | 21.1% | 1 | 146.0 | 15.2% |
| Eastern Exterior Wall Systems, Inc. (VBE) | 752.5 | 1 | 0 | 0.0 | 0.0% | 0 | 0.0 | 0.0% | 0 | 0.0 | 0.0% |
| Easton Concrete Cutting & Drilling LLC | 594.0 | 13 | 1 | 27.0 | 4.5% | 0 | 0.0 | 0.0% | 0 | 0.0 | 0.0% |
| Edward G. Sawyer Co., Inc. | 143,644.0 | 145 | 25 | 34,012.0 | 23.7% | 12 | 13,850.0 | 9.6% | 3 | 4,977.5 | 3.5% |
| Evermore Light and Power Inc. (WBE) | 4,952.0 | 5 | 0 | 0.0 | 0.0% | 0 | 0.0 | 0.0% | 1 | 1,515.0 | 30.6% |
| F.C. Construction Corp. | 2,275.5 | 35 | 8 | 414.5 | 18.2% | 0 | 0.0 | 0.0% | 1 | 111.0 | 4.9% |
| Federal Concrete (WBE) | 3,535.5 | 27 | 7 | 886.5 | 25.1% | 3 | 522.5 | 14.8% | 2 | 270.0 | 7.6% |
| Ferguson-Neudorf Glass Inc. | 44.0 | 1 | 0 | 0.0 | 0.0% | 0 | 0.0 | 0.0% | 0 | 0.0 | 0.0% |
| Fischbach & Moore Electric Group, LLC | 996.0 | 7 | 1 | 8.0 | 0.8% | 0 | 0.0 | 0.0% | 0 | 0.0 | 0.0% |
| Fisher Contracting Corporation (M/WBE) | 4,876.0 | 20 | 3 | 604.0 | 12.4% | 3 | 837.0 | 17.2% | 1 | 276.0 | 5.7% |
| Food Equipment Installations, Inc. | 3,611.0 | 12 | 0 | 0.0 | 0.0% | 0 | 0.0 | 0.0% | 0 | 0.0 | 0.0% |
| Geologic Earth Exploration, Inc. | 72.5 | 2 | 0 | 0.0 | 0.0% | 0 | 0.0 | 0.0% | 0 | 0.0 | 0.0% |
| Gleeson Powers, Inc. | 5,306.0 | 14 | 4 | 1,806.5 | 34.0% | 1 | 232.0 | 4.4% | 0 | 0.0 | 0.0% |
| Greenwood Industries, Inc. | 3,302.8 | 16 | 7 | 1,403.0 | 42.5% | 0 | 0.0 | 0.0% | 0 | 0.0 | 0.0% |
| Griffin Door dba Overhead Door Specialities | 112.0 | 2 | 0 | 0.0 | 0.0% | 0 | 0.0 | 0.0% | 0 | 0.0 | 0.0% |

| CONTRACTOR | PROJECT TO DATE | | | | | | | | | | |
|---------------------------------------------------|-----------------|-----------------|------------------------|-----------|-------|---------------------|----------|-------|----------------------|----------|-------|
| | Total Hours | Total # Workers | MINORITY - Goal: 15.3% | | | FEMALE - Goal: 6.9% | | | VETERAN - Goal: 3.0% | | |
| | | | # Workers | Hours | % | # Workers | Hours | % | # Workers | Hours | % |
| Hayward Baker Inc. | 10,688.0 | 55 | 4 | 1,472.0 | 13.8% | 2 | 250.0 | 2.3% | 1 | 365.5 | 3.4% |
| Homeland Mechanical LLC (VBE) | 340.0 | 3 | 0 | 0.0 | 0.0% | 0 | 0.0 | 0.0% | 1 | 168.0 | 49.4% |
| Hub Foundation Co., Inc. | 18,363.5 | 45 | 6 | 2,839.5 | 15.5% | 2 | 1,164.0 | 6.3% | 6 | 4,377.0 | 23.8% |
| J & M Brown Company, Inc. | 40,744.5 | 44 | 11 | 8,233.0 | 20.2% | 2 | 3,612.5 | 8.9% | 2 | 3,253.0 | 8.0% |
| J Rams Inc | 17.0 | 2 | 0 | 0.0 | 0.0% | 0 | 0.0 | 0.0% | 1 | 8.0 | 47.1% |
| J. Derenzo Co. | 162,063.4 | 134 | 19 | 36,923.5 | 22.8% | 11 | 18,676.0 | 11.5% | 11 | 14,100.5 | 8.7% |
| J. Thibert Architectural Woodwork Installation | 4,229.5 | 12 | 1 | 290.5 | 6.9% | 1 | 290.5 | 6.9% | 1 | 476.5 | 11.3% |
| J.C. Cannistraro | 34,927.0 | 61 | 4 | 5,282.0 | 15.1% | 3 | 3,062.5 | 8.8% | 2 | 504.0 | 1.4% |
| J.C. Higgins Corp | 83,960.0 | 83 | 11 | 13,638.0 | 16.2% | 5 | 7,097.5 | 8.5% | 4 | 4,667.0 | 5.6% |
| J.F. White Contracting Company, Inc | 34,032.0 | 58 | 8 | 4,712.0 | 13.8% | 2 | 3,904.5 | 11.5% | 3 | 1,334.5 | 3.9% |
| Jackson Glass, Inc. (WBE) - Payroll is done on | 59,988.0 | 60 | 15 | 13,905.0 | 23.2% | 6 | 7,625.0 | 12.7% | 7 | 6,695.0 | 11.2% |
| Jerez LLC (MWBE) | 8,933.0 | 9 | 7 | 7,575.0 | 84.8% | 1 | 191.5 | 2.1% | 0 | 0.0 | 0.0% |
| John W. Egan Co., Inc. | 40.0 | 1 | 0 | 0.0 | 0.0% | 0 | 0.0 | 0.0% | 0 | 0.0 | 0.0% |
| JP Obelisk, Inc. | 1,245.0 | 13 | 5 | 576.0 | 46.3% | 0 | 0.0 | 0.0% | 0 | 0.0 | 0.0% |
| JR Vinagro Corp. | 2,657.0 | 25 | 5 | 223.0 | 8.4% | 1 | 120.0 | 4.5% | 1 | 122.0 | 4.6% |
| K&H Electrical Systems, Inc. | 12,275.5 | 30 | 8 | 3,050.5 | 24.9% | 1 | 457.5 | 3.7% | 1 | 120.5 | 1.0% |
| K&K Acoustical Ceilings, Inc. | 5,563.0 | 9 | 2 | 945.0 | 17.0% | 2 | 717.0 | 12.9% | 1 | 1,460.0 | 26.2% |
| K&M Fire Protection Services, Inc. - Payroll done | 79,345.0 | 63 | 10 | 15,430.0 | 19.4% | 2 | 3,636.5 | 4.6% | 6 | 7,951.5 | 10.0% |
| K. DaPonte Construction Corp. | 720.0 | 18 | 1 | 72.0 | 10.0% | 1 | 32.0 | 4.4% | 0 | 0.0 | 0.0% |
| K.O. Stone Inc. (MBE) | 632.0 | 11 | 10 | 616.0 | 97.5% | 5 | 328.0 | 51.9% | 0 | 0.0 | 0.0% |
| Kenneth Castellucci & Associates, Inc. | 5,885.5 | 21 | 1 | 152.0 | 2.6% | 0 | 0.0 | 0.0% | 0 | 0.0 | 0.0% |
| Killea Equipment | 501.0 | 3 | 2 | 305.0 | 60.9% | 0 | 0.0 | 0.0% | 0 | 0.0 | 0.0% |
| KM Kelly, Inc. | 24,799.3 | 26 | 6 | 4,684.0 | 18.9% | 4 | 3,350.3 | 13.5% | 2 | 1,817.0 | 7.3% |
| L.J. Mishel Electrical Contractors, Inc. | 96.0 | 2 | 0 | 0.0 | 0.0% | 0 | 0.0 | 0.0% | 1 | 48.0 | 50.0% |
| Lan-Tel Communications, Inc. | 13,671.0 | 16 | 6 | 5,681.0 | 41.6% | 1 | 1,479.0 | 10.8% | 2 | 1,868.0 | 13.7% |
| Leading Way Construction Co., Inc. | 96.0 | 6 | 0 | 0.0 | 0.0% | 0 | 0.0 | 0.0% | 0 | 0.0 | 0.0% |
| Liberty Construction Services | 409,686.0 | 384 | 118 | 118,350.0 | 28.9% | 33 | 36,634.0 | 8.9% | 8 | 7,732.0 | 1.9% |
| Liberty Equipment and Supply | 13,507.0 | 42 | 8 | 2,531.0 | 18.7% | 3 | 679.0 | 5.0% | 1 | 1,217.0 | 9.0% |
| Lockwood Remediation | 32.0 | 1 | 0 | 0.0 | 0.0% | 0 | 0.0 | 0.0% | 0 | 0.0 | 0.0% |
| Longden Company Inc. | 1,035.0 | 7 | 1 | 191.0 | 18.5% | 0 | 0.0 | 0.0% | 2 | 248.0 | 24.0% |
| Lund Rebar Services, Inc. | 108,783.5 | 128 | 59 | 50,249.0 | 46.2% | 11 | 7,536.0 | 6.9% | 6 | 8,375.0 | 7.7% |
| M.L. McDonald Sales Company, LLC | 82,947.0 | 121 | 25 | 12,819.0 | 15.5% | 7 | 4,525.0 | 5.5% | 5 | 5,655.0 | 6.8% |
| Marguerite Concrete, Inc. | 587.0 | 34 | 9 | 166.0 | 28.3% | 1 | 8.0 | 1.4% | 2 | 32.0 | 5.5% |
| Marr Equipment Corp. | 202.0 | 9 | 0 | 0.0 | 0.0% | 0 | 0.0 | 0.0% | 1 | 3.0 | 1.5% |
| Mass Bay Electrical Corp. | 3,916.5 | 46 | 1 | 201.0 | 5.1% | 1 | 155.0 | 4.0% | 0 | 0.0 | 0.0% |
| Massey's Plate Glass Aluminum, Inc. | 2,376.0 | 15 | 4 | 839.0 | 35.3% | 1 | 192.0 | 8.1% | 1 | 303.0 | 12.8% |
| Maxim Crane Works, L.P. | 47,040.5 | 73 | 14 | 11,231.5 | 23.9% | 3 | 3,756.5 | 8.0% | 5 | 6,816.5 | 14.5% |
| McCusker-Gill, Inc. | 73,798.0 | 101 | 19 | 24,125.0 | 32.7% | 2 | 4,080.0 | 5.5% | 8 | 11,240.0 | 15.2% |
| McDonald Electrical Corp. | 42,661.0 | 74 | 12 | 5,263.0 | 12.3% | 7 | 1,982.0 | 4.6% | 8 | 4,227.0 | 9.9% |
| McGregor Industries, Inc. | 19,017.0 | 33 | 7 | 1,922.5 | 10.1% | 2 | 3,072.0 | 16.2% | 3 | 1,864.5 | 9.8% |
| McPhee Electric Ltd. | 19,838.5 | 35 | 5 | 2,068.5 | 10.4% | 3 | 613.0 | 3.1% | 4 | 2,631.0 | 13.3% |
| Melo's Rodbusters, Inc. (WBE) | 13,566.5 | 22 | 11 | 7,113.0 | 52.4% | 0 | 0.0 | 0.0% | 1 | 1,820.0 | 13.4% |
| Midnight Iron Construction Management Inc. | 32.0 | 1 | 0 | 0.0 | 0.0% | 0 | 0.0 | 0.0% | 0 | 0.0 | 0.0% |
| Mitsubishi Electric US, Inc. | 5,886.0 | 7 | 2 | 2,119.0 | 36.0% | 1 | 943.0 | 16.0% | 4 | 3,355.0 | 57.0% |
| MON Landscaping Inc. | 416.0 | 15 | 1 | 16.0 | 3.8% | 0 | 0.0 | 0.0% | 0 | 0.0 | 0.0% |
| Moretrench | 19,856.0 | 38 | 11 | 5,850.0 | 29.5% | 3 | 302.0 | 1.5% | 2 | 1,335.5 | 6.7% |
| MTK Construction Services, Inc. | 514.0 | 12 | 8 | 396.0 | 77.0% | 0 | 0.0 | 0.0% | 0 | 0.0 | 0.0% |
| NER Construction Mgmt | 7,878.5 | 22 | 1 | 48.0 | 0.6% | 0 | 0.0 | 0.0% | 1 | 48.0 | 0.6% |
| New England Finish Systems | 473.5 | 10 | 1 | 44.0 | 9.3% | 2 | 6.0 | 1.3% | 0 | 0.0 | 0.0% |
| New England Installation, Inc. | 818.5 | 8 | 1 | 141.0 | 17.2% | 0 | 0.0 | 0.0% | 1 | 106.5 | 13.0% |
| New Roads Environmental | 7,929.5 | 42 | 40 | 7,874.5 | 99.3% | 4 | 1,412.0 | 17.8% | 1 | 172.0 | 2.2% |
| New tech Installation USA inc | 10,866.3 | 35 | 6 | 1,244.5 | 11.5% | 1 | 44.0 | 0.4% | 2 | 284.0 | 2.6% |
| North East Foam Solutions, Inc. | 5,563.0 | 10 | 4 | 1,217.0 | 21.9% | 1 | 1,524.0 | 27.4% | 3 | 2,240.0 | 40.3% |
| Northeast Interior aka Artisan Millwork | 5,269.5 | 10 | 3 | 1,854.0 | 35.2% | 1 | 568.0 | 10.8% | 1 | 1,067.5 | 20.3% |
| NorthStar Contracting Group, Inc | 37.0 | 2 | 1 | 12.0 | 32.4% | 0 | 0.0 | 0.0% | 0 | 0.0 | 0.0% |

| CONTRACTOR | PROJECT TO DATE | | | | | | | | | | |
|--------------------------------------------|--------------------|-----------------|------------------------|------------------|--------------|---------------------|------------------|-------------|----------------------|------------------|-------------|
| | Total Hours | Total # Workers | MINORITY - Goal: 15.3% | | | FEMALE - Goal: 6.9% | | | VETERAN - Goal: 3.0% | | |
| | | | # Workers | Hours | % | # Workers | Hours | % | # Workers | Hours | % |
| Oasis Shower Doors | 1,755.0 | 8 | 0 | 0.0 | 0.0% | 1 | 222.0 | 12.6% | 0 | 0.0 | 0.0% |
| Otis Elevator Company | 43,658.8 | 69 | 6 | 3,357.3 | 7.7% | 5 | 1,443.0 | 3.3% | 3 | 1,517.8 | 3.5% |
| P.J. Dionne Company, Inc. | 1,266.5 | 6 | 1 | 184.0 | 14.5% | 1 | 120.0 | 9.5% | 0 | 0.0 | 0.0% |
| P.J. Spillane Company, Inc. (WBE) | 12,645.5 | 46 | 10 | 2,542.0 | 20.1% | 2 | 1,150.0 | 9.1% | 1 | 36.0 | 0.3% |
| Peak Mechanical Services | 9,238.0 | 18 | 5 | 3,645.0 | 39.5% | 0 | 0.0 | 0.0% | 3 | 812.0 | 8.8% |
| Pick Crane Service, Inc. | 110.5 | 3 | 0 | 0.0 | 0.0% | 0 | 0.0 | 0.0% | 0 | 0.0 | 0.0% |
| Port Morris Tile & Marble Boston LP | 22,166.5 | 66 | 9 | 4,301.0 | 19.4% | 4 | 1,617.0 | 7.3% | 3 | 2,202.0 | 9.9% |
| PSN Construction Inc. | 1,028.3 | 2 | 2 | 1,028.3 | 100.0% | 0 | 0.0 | 0.0% | 0 | 0.0 | 0.0% |
| Quality Air Metals, Inc. (WBE) | 15,057.0 | 13 | 3 | 3,671.0 | 24.4% | 1 | 1,455.0 | 9.7% | 1 | 457.0 | 3.0% |
| R.J. Cobb LTD | 48.0 | 2 | 0 | 0.0 | 0.0% | 0 | 0.0 | 0.0% | 0 | 0.0 | 0.0% |
| Rapid Flow Inc. | 1,572.0 | 2 | 0 | 0.0 | 0.0% | 0 | 0.0 | 0.0% | 1 | 8.0 | 0.5% |
| Regis Steel Corporation (MBE) | 6,283.5 | 24 | 6 | 1,415.5 | 22.5% | 3 | 613.0 | 9.8% | 0 | 0.0 | 0.0% |
| Richard W. Reid Electric Company Inc. | 34.0 | 3 | 2 | 16.0 | 47.1% | 0 | 0.0 | 0.0% | 0 | 0.0 | 0.0% |
| Roadsafe Traffic Systems, Inc | 45.0 | 4 | 2 | 17.0 | 37.8% | 0 | 0.0 | 0.0% | 0 | 0.0 | 0.0% |
| Roman Iron Works, Inc. | 182.0 | 3 | 1 | 102.0 | 56.0% | 0 | 0.0 | 0.0% | 0 | 0.0 | 0.0% |
| S&A Cranes LLC | 62.5 | 7 | 1 | 10.5 | 16.8% | 0 | 0.0 | 0.0% | 1 | 8.0 | 12.8% |
| S&F Concrete Contractors, Inc. | 420,899.0 | 406 | 102 | 129,266.0 | 30.7% | 17 | 23,739.0 | 5.6% | 13 | 19,878.0 | 4.7% |
| Silverback Construction Inc. | 416.0 | 18 | 1 | 27.0 | 6.5% | 0 | 0.0 | 0.0% | 0 | 0.0 | 0.0% |
| Skylight Consultants of America, Inc. | 1,513.5 | 13 | 1 | 64.0 | 4.2% | 0 | 0.0 | 0.0% | 0 | 0.0 | 0.0% |
| SOEP Painting Corp. | 16,093.5 | 53 | 20 | 6,320.0 | 39.3% | 9 | 2,214.0 | 13.8% | 1 | 434.0 | 2.7% |
| SOS Corporation (WBE) | 1,838.0 | 15 | 7 | 563.0 | 30.6% | 7 | 566.0 | 30.8% | 0 | 0.0 | 0.0% |
| SPS New England, Inc. | 46,796.5 | 79 | 17 | 8,158.5 | 17.4% | 6 | 3,424.0 | 7.3% | 1 | 424.0 | 0.9% |
| Stafford Smith | 0.0 | 0 | 0 | 0.0 | 0.0% | 0 | 0.0 | 0.0% | 0 | 0.0 | 0.0% |
| Stanley & Sons, Inc. | 5,712.5 | 28 | 9 | 958.5 | 16.8% | 2 | 706.0 | 12.4% | 4 | 1,097.0 | 19.2% |
| Structures Derek International SA | 1,520.5 | 8 | 3 | 704.5 | 46.3% | 0 | 0.0 | 0.0% | 0 | 0.0 | 0.0% |
| Sullivan & McLaughlin Co., Inc. | 3,677.0 | 10 | 1 | 873.0 | 23.7% | 2 | 945.0 | 25.7% | 1 | 681.0 | 18.5% |
| Sunrise Erectors, Inc. | 44,492.0 | 79 | 12 | 5,089.5 | 11.4% | 6 | 2,360.5 | 5.3% | 4 | 3,330.5 | 7.5% |
| Sweeney Drywall Finishes Corp | 2,506.0 | 22 | 8 | 881.0 | 35.2% | 0 | 0.0 | 0.0% | 1 | 32.0 | 1.3% |
| T & T Steel Erectors, Inc. (MBE) | 807.0 | 6 | 1 | 275.0 | 34.1% | 1 | 218.0 | 27.0% | 0 | 0.0 | 0.0% |
| T&T Electrical Contractors, Inc. | 110,954.5 | 151 | 20 | 17,189.5 | 15.5% | 8 | 3,758.0 | 3.4% | 6 | 5,589.5 | 5.0% |
| Tavares LLC (MBE) | 24,726.5 | 50 | 21 | 16,813.5 | 68.0% | 1 | 1,717.0 | 6.9% | 1 | 1,820.0 | 7.4% |
| TCI Installations Inc. (WBE) | 2,576.0 | 8 | 1 | 416.0 | 16.1% | 0 | 0.0 | 0.0% | 1 | 666.0 | 25.9% |
| The Railroad Associates Corporation | 68.5 | 3 | 0 | 0.0 | 0.0% | 0 | 0.0 | 0.0% | 0 | 0.0 | 0.0% |
| The Welch Corporation | 11,582.5 | 21 | 2 | 1,308.0 | 11.3% | 3 | 1,057.0 | 9.1% | 2 | 1,225.0 | 10.6% |
| Thermo-Dynamics International, Inc. (VBE) | 13,088.5 | 35 | 10 | 3,151.0 | 24.1% | 2 | 686.5 | 5.2% | 1 | 1,579.0 | 12.1% |
| Titan Roofing, Inc. (MVBE) | 47,464.0 | 100 | 26 | 13,667.0 | 28.8% | 3 | 4,174.5 | 8.8% | 4 | 3,582.0 | 7.5% |
| Total Mechanical Service Corp. (MBE) | 96.0 | 3 | 0 | 0.0 | 0.0% | 0 | 0.0 | 0.0% | 0 | 0.0 | 0.0% |
| TREVICOS CORPORATION | 60,534.5 | 89 | 24 | 16,023.0 | 26.5% | 7 | 4,090.5 | 6.8% | 3 | 2,630.0 | 4.3% |
| Triboro Crane & Rigging Services | 1,128.0 | 9 | 0 | 0.0 | 0.0% | 0 | 0.0 | 0.0% | 0 | 0.0 | 0.0% |
| Union Temporary Services, Inc. | 3,611.5 | 7 | 1 | 214.0 | 5.9% | 1 | 214.0 | 5.9% | 0 | 0.0 | 0.0% |
| Unistrut International Corp. | 14,980.8 | 22 | 5 | 5,468.5 | 36.5% | 2 | 1,077.5 | 7.2% | 1 | 1,574.0 | 10.5% |
| United Elevator Company (WBE) | 124.0 | 2 | 0 | 0.0 | 0.0% | 0 | 0.0 | 0.0% | 0 | 0.0 | 0.0% |
| Universal Automation & Mechanical Services | 1,041.0 | 8 | 1 | 8.0 | 0.8% | 0 | 0.0 | 0.0% | 0 | 0.0 | 0.0% |
| Urban Insulation Inc. (WBE) | 9,653.0 | 20 | 5 | 2,330.0 | 24.1% | 2 | 1,267.5 | 13.1% | 2 | 959.0 | 9.9% |
| UTEC Constructors LLC | 688.0 | 9 | 1 | 116.0 | 16.9% | 0 | 0.0 | 0.0% | 0 | 0.0 | 0.0% |
| Vanguard Plumbing & Mechanical LLC | 312.0 | 2 | 0 | 0.0 | 0.0% | 0 | 0.0 | 0.0% | 0 | 0.0 | 0.0% |
| Vynorius Piledriving Inc. | 13,626.3 | 32 | 3 | 1,810.3 | 13.3% | 3 | 657.5 | 4.8% | 4 | 1,592.0 | 11.7% |
| Walco Installations, LLC | 662.0 | 6 | 0 | 0.0 | 0.0% | 0 | 0.0 | 0.0% | 0 | 0.0 | 0.0% |
| WES Construction Corp | 4,134.0 | 15 | 1 | 356.5 | 8.6% | 1 | 398.0 | 9.6% | 0 | 0.0 | 0.0% |
| Whitehawk Construction Services, Inc. | 6.0 | 1 | 0 | 0.0 | 0.0% | 0 | 0.0 | 0.0% | 0 | 0.0 | 0.0% |
| Wood & Wire Fence Co. Inc. (MBE) | 8.0 | 2 | 1 | 4.0 | 50.0% | 0 | 0.0 | 0.0% | 0 | 0.0 | 0.0% |
| TOTAL | 3,984,216.2 | 6,020 | 1,399 | 994,890.5 | 25.0% | 375 | 275,838.3 | 6.9% | 275 | 245,460.5 | 6.2% |

**Contracts and Payments to Minority, Women and
Veteran Business Enterprises for Construction Phase**
As of September 30, 2018

Reference 205 CMR 135.02(5)(f)

As of September 30th, 2018, Encore had awarded \$229,302,016 or 18.0% of qualified construction contracts, in contracts to M/W/VBEs. As of September 30, 2018, Encore and Encore's contractors and sub-contractors awarded 79 contracts to MBEs, 154 contracts to WBEs, and 49 contracts to VBEs for construction.

| | # Contract Awards* | Contract Award Value (\$) | % of Total Construction Contracts Awarded to Date | % Goal | Paid to Date (\$) |
|----------------|--------------------|---------------------------|---------------------------------------------------|--------------|----------------------|
| MBE | 79 | 77,750,418 | 6.1% | 5.0% | 57,128,020 |
| WBE | 154 | 144,126,409 | 11.3% | 5.4% | 117,725,646 |
| VBE | 49 | 32,709,989 | 2.6% | 1.0% | 29,065,876 |
| TOTAL** | 241 | \$229,302,016 | 18.0% | 11.4% | \$177,472,877 |

*Note that a majority of M/W/VBEs are sub-contracted with Encore's contractors and sub-contractors.

M/W/VBE contract awards and payments report includes awards and payments made to businesses with more than one diverse classification (i.e. M/WBE). **Totals reported deduct any double counting due to awards to businesses with more than one diverse classification.

**Contracts and Payments to Minority, Women and
Veteran Business Enterprises for Design Phase
As of September 30, 2018**

Reference 205 CMR 135.02(5)(f)

As of September 30, 2018, Encore had awarded \$14,490,238 or 23.3% of qualified design contracts, to M/W/VBEs for design work. As of September 30, 2018, Encore and Encore’s consultants awarded 13 contracts to MBEs, 15 contracts to WBEs, and 4 contracts to VBEs for design work.

| | # Contract Awards* | Contract Award Value (\$) | % Total Design Contract* | % Goal | Paid to Date (\$) |
|--------------|-----------------------|---------------------------|-----------------------------|--------------|----------------------|
| MBE | 13 | 5,439,916 | 8.8% | 7.9% | 5,097,899 |
| WBE | 15 | 5,052,022 | 8.1% | 10.0% | 4,778,131 |
| VBE | 4 | 4,038,300 | 6.5% | 1.0% | 3,671,308 |
| TOTAL | 31 | \$14,490,238 | 23.3% | 18.9% | \$13,529,377 |

*Note that 9 MBE contracts, 9 WBE contracts, and 2 VBE contract, are sub-contracted with Encore’s consultants.

M/W/VBE contract awards and payments report includes awards and payments made to businesses with more than one diverse classification (i.e. M/WBE). **Totals reported deduct any double counting due to awards to businesses with more than one diverse classification.