



MGM SPRINGFIELD

QUARTERLY STATUS REPORT #4

Monitoring of Project Construction and
Licensee Requirements
205 CMR 135

For the Period:
October–December 2015



QUARTERLY STATUS REPORT: OCTOBER-DECEMBER 2015

TABLE OF CONTENTS

TABLE OF CONTENTS 1

LIST OF APPENDICES 1

1 PROJECT SCHEDULE..... 2

1a CURRENT SCHEDULE 2

1b PROJECT SCHEDULE CHANGES 2

2 CONSTRUCTION PHASE DIVERSITY PROGRAM FOR EQUAL OPPORTUNITY 3

2a DIVERSITY SUMMARY 3

2b COMMITMENTS 6

2c WORKFORCE STATISTICS 9

3 COST OF CONSTRUCTION / CAPITALIZATION OF GAMING LICENSE 10

4 DESIGN & CONSTRUCTION CONTRACTS..... 11

5 STATUS OF WORK COMPLETED / PROGRESS PHOTOGRAPHS..... 12

5a STATUS OF WORK COMPLETED 12

5b PROGRESS PHOTOGRAPHS 15

6 PERMITS 20

7 ORGANIZED LABOR LETTER 23

8 OPERATIONAL PHASE DIVERSITY PROGRAM FOR EQUAL OPPORTUNITY 24

LIST OF APPENDICES

LEVEL 1, LEVEL 2 and DETAILED PROJECT SCHEDULES..... APPENDIX A

DIVERSITY AND COMMUNITY OUTREACH SUMMARY OCTOBER-DECEMBER 2015..... APPENDIX B

DIVERSITY COMMITMENTS – DESIGN AND CONSTRUCTION AS OF DECEMBER 31, 2015.....APPENDIX C

CONSTRUCTION WORKFORCE STATISTICS AS OF DECEMBER 28, 2015.....APPENDIX D

LETTER REGARDING COST OF CONSTRUCTION AND CAPITALIZATION OF GAMING LICENSE.. APPENDIX E



QUARTERLY STATUS REPORT: OCTOBER-DECEMBER 2015

135.02.2 The commission shall, in accordance with M.G.L. c. 23K, §§ 10 and 11 approve for each gaming licensee, a project schedule for the gaming licensee's capital investment in its gaming establishment and related infrastructure which includes:

(a) all major stages of design and construction; including all permitting and approvals, design deliverables, site preparation, foundation, structure, plumbing, electrical, mechanical, exterior finish and fenestration, long lead items, insulation, interior finish and furnishings and landscaping, building commissioning and commissioning of gaming equipment and information technology systems.

(b) For a Category 1 gaming establishment, a timeline for commencement of the final stage of construction pursuant to M.G.L. c. 23K, § 10(a); and

(c) a timeline for the stage of construction at which the gaming licensee shall be approved to open for business or operate a slot machine pursuant to M.G.L. c. 23K, §§10(c) and 11(a).

135.02.4 If unforeseen and/or changed circumstances necessitate a change to a project schedule approved pursuant to 205 CMR 135.02(2) which will impact the completion date or requires a major change in the method or progress of construction, the gaming licensee may submit to the commission for its approval a revised project schedule, with a detailed statement of the unforeseen changed circumstances which justify the revised project schedule. If the commission approves such revised project schedule, it shall substitute and supersede the previously approved project schedule.

1 PROJECT SCHEDULE

1a CURRENT SCHEDULE

On August 6, 2015, the Massachusetts Gaming Commission approved a revised opening date of thirty (30) days following a construction completion date of either August 6, 2018 or the date on which the I-91 Viaduct Project achieves Full and Beneficial Use (as defined in MassDOT project documents), whichever occurs later. MGM submitted a final project schedule on November 6. Copies of the Level 1, Level 2 and Detailed Schedule are included in this document as Appendix A. We are awaiting the Massachusetts Gaming Commission's feedback on this submission. In accordance with our commitment to providing monthly schedule updates, an update posting was provided on December 10.

1b PROJECT SCHEDULE CHANGES

There are no changes to report that would alter MGM's opening date.

QUARTERLY STATUS REPORT: OCTOBER-DECEMBER 2015

135.02.3 Within the time frame provided in the award of the gaming license, the licensee shall provide to the commission for commission approval an affirmative action program of equal opportunity whereby the licensee establishes specific goals for the utilization of minorities, women and veterans on construction jobs and for contracting with minority, women or veteran owned businesses during either design or construction; provided, however that such goals shall be equal to or greater than the goals contained in Executive Office of Administration and Finance Administrative Bulletin Number 14.

135.02.5c To ensure adherence to the project schedule approved pursuant to 205 CMR 135.02(2) or (4), the gaming licensee shall submit to the commission in a media, format and level of detail acceptable to the commission, quarterly a status report including:

(e) a detailed statistical report pursuant to M.G.L. c. 23K, §21(a)(23) on the number, gender and race, and veteran status of individuals by job classifications hired to perform labor as part of the construction of the gaming establishment and related infrastructure, and a comparison of this report with the goals established by the gaming licensee and commission pursuant to M.G.L. c. 23K, §21(a)(22). In the event the licensee’s hiring of the aforementioned entities does not comply with the goals established the licensee shall submit within 20 days of a request by the commission a response as to why the goals have not been achieved, identify any good faith efforts that have been undertaken to achieve those goals and provide a plan to bring the dollar amount contracted and spent into compliance with the goals.

(f) a report describing the number of contracts, total dollar amounts contracted with and actually paid to minority business enterprises, women business enterprises and veteran business enterprises for design and construction of the gaming establishment and related infrastructure, and the total number and value of all subcontracts awarded to a minority, women and veteran owned business, and a comparison of these reports with the goals established by the gaming licensee and commission pursuant to M.G.L. c. 23K, §21(a)(21). In the event the licensee’s hiring of the aforementioned entities does not comply with the goals established the licensee shall submit within 20 days of a request by the commission a response as to why the goals have not been achieved, identify any good faith efforts that have been undertaken to achieve those goals and provide a plan to bring the dollar amount contracted and spent into compliance with the goals.

2 CONSTRUCTION PHASE DIVERSITY PROGRAM FOR EQUAL OPPORTUNITY

2a DIVERSITY SUMMARY

The following is a snapshot of Construction and Design Diversity Commitments through December 31:

GROUP	PROJECT GOALS	COMMITMENTS	VARIANCE	COMPANY COUNT	VALUE
WBE	10.00%	10.3%	0.3%	22	\$4.13M
MBE	5.00%	12.1%	7.1%	12	\$4.88M
VBE	2.00%	2.2%	0.2%	6	\$0.90M

Notes:

1. Total Commitments through December 31, 2015 are \$40.2M
2. Includes companies that are certified with the following agencies:
 - MBE - Massachusetts Supplier Diversity Office or Greater New England Minority Supplier Development Council.
 - WBE - Massachusetts Supplier Diversity Office or Women’s Business Enterprise National Council.
 - VBE - United States Department of Veteran Affairs or Massachusetts Gaming Commission.



QUARTERLY STATUS REPORT: OCTOBER-DECEMBER 2015

Outreach efforts in the 4th quarter of 2015 included the following:

1. Outreach to MBE, WBE, and VBE Companies
 - Held introductory meetings/contacts with 29 new diverse companies. A list of companies is included in Appendix B.
2. Community Group Meetings
 - Held continued meetings with community organizations – 27 meetings in 4th quarter 2015. A list of organizations is included in Appendix B.
 - Worked with specific groups on outreach and recruitment of minority contracts and workforce referrals, including Community Works, Springfield Department of Veterans Services, Uptown Construction Collaborative.
 - Panelist at Greater New England Minority Supplier Development Council “Get Connected and Certified” seminar for women and minority owned companies 10/7/15 at the Pioneer Valley Planning Commission in Springfield.
3. Launched construction portal on MGM Springfield website (www.mgmspringfield.com)
4. Advertised in targeted publications, including:
 - Afro-American Point of View
 - El Pueblo Latino
 - The Off-Line Newspaper
5. Garage Bid Package
 - Added list of qualified diverse companies in garage bid package
 - Provided Local Unions, General Contractors bidding on parking garage minority, veteran and women workforce referrals for Construction/Union placement
6. Investigated the potential of creating a Construction Workforce Task Force to create a working partnership with local trade/labor unions and community partners to explore ways to create opportunities for Women, Minorities and Veterans to enter the workforce
 - Preliminary meeting with Community Partners set for 1/7/16.
 - Preliminary meeting with Union Partners to follow
 - Task force has conducted an extensive listening tour with community partners and has documented all concerns and ideas around increasing diversity in the construction workforce.
 - Task force to set meeting schedule, agendas, and work plans.
 - Task Force efforts to continue after MGM Springfield is complete.
7. Construction Workforce Referrals to Unions and Community Partners
 - Union Apprenticeship program details are being updated through discussion with individual union contacts. These details will be available on the MGM Springfield website once approved.
 - Individuals who are currently interested in joining the workforce have started filling out online work interest form
 - MGM interviews each applicant and refers them to the appropriate union apprenticeship programs
 - If necessary, referrals are made to appropriate community partners for applicants requiring assistance with obtaining any of the following:
 - i. G.E.D./High School Diploma
 - ii. Drivers License

QUARTERLY STATUS REPORT: OCTOBER-DECEMBER 2015

- iii. Adult Basic Educaiton and Academic Assistance
- iv. English as a Second Language (E.S.O.L.)
- MGM Springfield to follow up with the applicant, union and/or community partner to track referrals and any new acceptance in a partnering union apprenticeship program
- 8. Partnering with Roger L. Putnam Academy Vocational Department
 - Partnering with the Carpenters Union #108, MGM is working with Roger L. Putnam Academy Vocational Department to offer graduating seniors information about working with a union and a career in construction
 - i. Emphasis placed on identifying female and minority students interested in construction
 - Graduating seniors in vocational programs will be offered:
 - i. MGM Springfield site tour
 - ii. Presentation by MGM Springfield Construction Team, Carpenters Union #108, and other Union representatives on how to pursue a career in construction.



MGM Springfield Website (www.mgmspringfield.com)

OPEN CALL!
Minority, Women, and Veteran Owned Businesses

MGM Resorts International is committed to providing access to opportunities for certified minority, women, and veteran owned businesses in the construction of MGM Springfield.

If you are a MBE, WBE or VBE contractor interested in working with MGM Springfield our construction team wants to meet with you.

In addition to learning about your company, we will provide you with information on:

- Pre-Qualification Process and Requirements
- Construction plans and timeline
- Registering as a vendor with the MA Gaming Commission
- Certifying your business as a MBE, WBE or VBE

1-on-1 meetings with our team will be scheduled on an ongoing basis **by appointment only.**

To schedule an appointment, please contact:
Chelan Brown
Diversity Specialist
cbrown@mgmspringfield.com
413-273-5926

MGM Springfield, Building Excitement

Diversity Advertisement

QUARTERLY STATUS REPORT: OCTOBER-DECEMBER 2015

2b COMMITMENTS

Reporting on Design and Construction Commitments is included in this document as Appendix C.

Design Commitments

The following is a snapshot of Design Diversity Commitments through December 31:

GROUP	COMMITMENTS	CONSULTANT COUNT	VALUE
WBE	4.4%	5	\$0.43M
MBE	2.6%	1	\$0.26M
VBE	0.0%	1	\$0.00M

Notes:

- Total Commitments through December 31, 2015 are \$9.7M
- Includes companies that are certified with the following agencies:
 - MBE - Massachusetts Supplier Diversity Office or Greater New England Minority Supplier Development Council.
 - WBE - Massachusetts Supplier Diversity Office or Women's Business Enterprise National Council.
 - VBE - United States Department of Veteran Affairs or Massachusetts Gaming Commission.
- Value for VBE (Stevens & Associates) is included in the Construction Commitments because they are being billed through Tishman.

The following certified diverse design companies are working or have worked on the project as of December 31, 2015:

COMPANY	SCOPE	LOCATION	DIVERSITY STATUS
1. Convergent Technologies Design Group, Inc.	Acoustics/ Audio Visual/IT/Low Voltage	Lockport, NY 14094	WBE
2. Copley Wolff Design Group, Inc.	Full Landscape Architectural Services	Boston, MA 02116	WBE
3. Desman, Inc.	Parking Garage Bridging Documents (LOA)	Boston, MA 02108	MBE
4. Dietz & Company Architects, Inc.	Full Service Architecture and Interior Design	Springfield, MA 01103	WBE
5. MCLA, Inc.	Lighting	Washington, DC 20007	WBE
6. Soden Sustainability Consulting, LLC	LEED	Winchester, MA 01890	WBE
7. Stevens & Associates	Façade Stabilization Design	Brattleboro, VT 05302	VBE

Notes: (1) These companies are certified with the following agencies:

- Massachusetts Supplier Diversity Office
- Women's Business Enterprise National Council.
- Massachusetts Gaming Commission.



QUARTERLY STATUS REPORT: OCTOBER-DECEMBER 2015

Construction Commitments

The following is a snapshot of Construction Diversity Commitments through December 31:

GROUP	COMMITMENTS	CONSULTANT COUNT	VALUE
WBE	12.1%	17	\$3.70M
MBE	15.2%	11	\$4.62M
VBE	2.9%	5	\$0.90M

Notes:

- Total Commitments through December 31, 2015 are \$30.5M
- Includes companies that are certified with the following agencies:
 - MBE - Massachusetts Supplier Diversity Office or Greater New England Minority Supplier Development Council.
 - WBE - Massachusetts Supplier Diversity Office or Women's Business Enterprise National Council.
 - VBE - United States Department of Veteran Affairs or Massachusetts Gaming Commission.

The following certified diverse companies are working or have worked on the project as of December 31, 2015:

COMPANY	SCOPE	LOCATION	DIVERSITY STATUS
1. American Environmental, Inc.	Abatement & Demolition	Holyoke, MA 01040	MBE
2. Ayala Excavating and Trucking, LLC	Trucking	Springfield, MA 01107	MBE
3. BECO Electrical Contractors, Inc.	Electrical	Monson, MA 01057	VBE
4. Berkshire Concrete Cutting	Saw Cutting	Torrington, CT 06790	WBE
5. C&C Contractors, Inc.	Trucking Services	Springfield, MA 01104	MBE
6. CK Flooring Solutions, Inc.	Carpet Installer	Chicopee, MA 01020	WBE
7. CMJ, LLC	Property Mgmt./ Maintenance	Springfield, MA 01101	MBE
8. Connecticut Drywall Finishing, Inc.	Drywall	West Springfield, MA 01089	WBE
9. Connecticut Temperature Controls LLC	Controls	Newington, CT 06131	VBE
10. EDM Construction Inc.	Carpentry & Structural Steel Erection	Merrimac, MA 01860	WBE
11. El Waterman, Inc	Pipe Supplier	Foxboro, MA 02035	WBE
12. Erection & Welding	Steel Supplier	New Milford, CT 06776	MBE



QUARTERLY STATUS REPORT: OCTOBER-DECEMBER 2015

13. Evermore Light & Power, Inc.	Electrical	Somerville, MA 02145	WBE
14. Frisoli Electric, Inc.	Electrical	Holbrook, MA 02343	VBE
15. Granite City Electric Supply Company, Inc.	Electrical Supplier	Quincy, MA 02169	WBE
16. JRL Construction, Inc.	General Contractor – Demolition	Springfield, MA 01103	VBE
17. Kittredge Equipment Company, Inc.	Kitchen Equipment	Agawam, MA 01001	WBE
18. L.K. Sheet Metal, Inc.	Sheet Metal	East Hartford, CT 06108	WBE
19. Larry's Trucking	Trucking	Springfield, MA 01129	MBE
20. Lindon Supply	Piping Materials	East Providence, RI 02914	WBE
21. Medeiros Hydroseeding & Landscaping Construction, Inc.	Trucking and Soil Materials	Monson, MA 01057	MBE
22. New England Foundation Company	Helical Piles	Andover, MA 01810	WBE
23. Northeastern Steel Corp	Steel Distributor	Revere, MA 02151	MBE
24. Optimum Building & Inspection	Carpentry	Springfield, MA 01104	MBE
25. Performance Testing & Balancing LLC	Testing & Balancing	South Hampton, MA 01073	VBE
26. Rebars & Mesh, Inc.	Concrete	Haverhill, MA 01835	WBE
27. S&F Concrete Contractors, Inc	Concrete Formwork, Concrete Flatwork, Specialty Floors & Concrete Pumping	Hudson, MA 01749	MBE
28. Security Construction Services, Inc.	Fencing	Hudson, MA 01749	WBE
29. Steere Engineering, Inc.	Engineering Services	Warwick, RI 02886	WBE
30. Titan Roofing Company	Roofing	Springfield, MA 01104	MBE
31. Triton Leasing and Rental, Inc.	Demolition & Abatement	Feeding Hills, MA 01030	WBE
32. Ultimate Abatement Company, Inc.	Abatement	Plainfield, MA 01070	WBE
33. Willow Tree Outdoor, LLC	Landscape	Springfield MA 01105	WBE

QUARTERLY STATUS REPORT: OCTOBER-DECEMBER 2015

2c WORKFORCE STATISTICS

Subcontractors have been submitting workforce tracking forms after each pay period. The most recent available results have been tallied and are included as Appendix D.

Summary workforce statistics for the total Project as of December 28 are as follows:

GROUP	PROJECT GOALS	PROJECT TO DATE %
Women	6.90%	9.98%
Minority	15.30%	29.23%
Veteran	8.00%	7.15%

Note: Statistics include all workforce reports that were received by MGM as of December 28, 2015.



QUARTERLY STATUS REPORT: OCTOBER-DECEMBER 2015

135.02.5a To ensure adherence to the project schedule approved pursuant to 205 CMR 135.02(2) or (4), the gaming licensee shall submit to the commission in a media, format and level of detail acceptable to the commission, quarterly a status report including:

(a) the total estimated cost of construction of the project and related infrastructure improvements, including a sworn certification regarding costs incurred pursuant to 205 CMR 122.03: Costs Included in the Calculation of Capital Investment, and separately identifying detailed costs for design, land acquisition, site preparation and construction and off-site improvements

(b) a sworn certification regarding the capitalization of the gaming licensee, sufficient for the commission to determine, pursuant to M.G.L. c. 23K §10(e) or 11(c), that the gaming licensee has adequate funds to complete the gaming establishment and related infrastructure improvements.

3 COST OF CONSTRUCTION / CAPITALIZATION OF GAMING LICENSE

Pursuant to 205 CMR 135.02.5(a) and (b), please see Appendix E for a sworn certification regarding (a) the total estimated cost of construction of the project and related infrastructure improvements, and (b) the capitalization of MGM Springfield.

QUARTERLY STATUS REPORT: OCTOBER-DECEMBER 2015

135.02.5c To ensure adherence to the project schedule approved pursuant to 205 CMR 135.02(2) or (4), the gaming licensee shall submit to the commission in a media, format and level of detail acceptable to the commission, quarterly a status report including:

(c) a copy of all design and construction contracts executed within the prior quarter by the gaming licensee to design and construct the gaming establishment and related infrastructure improvements

4 DESIGN & CONSTRUCTION CONTRACTS

The following contracts were executed in the third quarter of 2015:

COMPANY	CONTRACT	MGC STATUS
1. Brad Henry Friedmutter & Associates, LTD, D/B/A Friedmutter Group	Letter of Authorization for Architectural Services	REGISTRANT
2. The Chrusciel Group Consulting, LLC	Design and Construction Coordination and Supervision Services	REGISTRANT

Copies of executed contracts are available to the Massachusetts Gaming Commission’s Representative for review.



QUARTERLY STATUS REPORT: OCTOBER-DECEMBER 2015

135.02.5d To ensure adherence to the project schedule approved pursuant to 205 CMR 135.02(2) or (4), the gaming licensee shall submit to the commission in a media, format and level of detail acceptable to the commission, quarterly a status report including:

(d) a status report reflecting the progress of construction and certifying compliance with the approved project schedule for major stages of construction. In the event that the progress of construction does not comply with the project schedule approved pursuant to 205 CMR 135.02, the licensee shall submit a detailed plan to bring the progress of construction into compliance with the approved project schedule or submit a request for a revised project schedule pursuant to 205 CMR 135.02(4)

5 STATUS OF WORK COMPLETED / PROGRESS PHOTOGRAPHS

5a STATUS OF WORK COMPLETED

Construction Progress

Final punch list activities were completed at the 10 Mill Street Mission. The Mission took occupancy of the completed building on December 31, 2015.

The following construction activities were completed in the 4th Quarter of 2015 or are underway for the Project Site:

- Constructed haul road, mobilized equipment, and excavated for new foundation for the planned relocation of the French Church
- Mobilized equipment for the demolition of the Howard Street/Zanetti School (planned for January 11, 2016), 1090-1104 Main Street, 1120 Main Street and 1126 Main Street
- Performed offsite utility work, including a new poured in place sewer manhole and water main bell clamps on Union Street, as well as water and sewer work on State Street
- Utility disconnections at 16 Bliss Street (VFW), 19 Bliss Street (Springfield Rescue Mission), and 1156-1178 Main Street (Edisonia Theater Block)
- Installation of utility monitoring point and excavation for test pits for electric manhole on Bliss Street
- Salvage at various historical locations, including interior ceiling tiles at the Armory, pedimented stone window lintel and window surrounds at Union House/Chandler Hotel, marble surrounds, stair railings and stair treads at 73 State Street (United Electric Company Building), exterior granite at 79-83 State Street, and decorative tile at 1158-1178 Main Street (Edisonia Theater Block)
- Exterior abatement at 1090-1104 Main Street
- Interior abatement at 22-30 Howard Street (YWCA Building)
- Garage bid packages were opened and reviewed, with plans to select a bidder and issue contract in the first quarter of 2016.
- Submitted Petition to Discontinue portions of Bliss and Howard Streets to the Mayor and City Council of Springfield

QUARTERLY STATUS REPORT: OCTOBER-DECEMBER 2015

Design Progress

Project Update presentations were given on November 18 to the City of Springfield and December 3 to the Massachusetts Gaming Commission. The current plan as presented at those meetings is shown below.

MGM submitted an application for Site Plan Review under provisions of the Casino Overlay District. A letter acknowledging completion of the Site Plan Submission from the City of Springfield was received on 11/23/15.

The Massachusetts Gaming Commission, though their consultant Pinck & Co., provided design related data requests on November 5. MGM Springfield provided responses and additional information over the following weeks and communicated directly with the Commission's traffic, economic and design consultants. The Commission's traffic, economic and design consultants presented their findings regarding the impact of the proposed design changes to the Commission on December 17, 2015. Further responses and clarifications regarding the Site Plan Submission were provided to the City of Springfield on December 21, and a revised Site Improvement Plan set was submitted to the City by our Civil Engineer, Allen & Major Associates, on December 22.



Plan Level 1



QUARTERLY STATUS REPORT: OCTOBER-DECEMBER 2015



Plan Level 2

Archival photographs of historic structures were assembled by the consultant team and submitted on 12/31/15 to the Springfield Historical Commission to fulfill reporting obligations in the Final Memorandum of Agreement with the Massachusetts Historical Commission.

Final Road Safety Audits were prepared and submitted to the MassDOT Highway Division on December 16, 2015. Audits were conducted for:

- State Street East
- State Street West
- Union Street
- Main Street South
- Locust Street
- Mail Street North
- U. S. Route 20
- Dwight Street

QUARTERLY STATUS REPORT: OCTOBER-DECEMBER 2015

5b PROGRESS PHOTOGRAPHS



10-26-15 Monthly Webcam Photos



11-25-15 Monthly Webcam Photos



12-28-15 Monthly Webcam Photos

QUARTERLY STATUS REPORT: OCTOBER-DECEMBER 2015



French Church Ready for Relocation



Rescue Mission Building Vacated on 12/31/15



12/26/15 Site Aerial Showing Church Haul Road Progress.

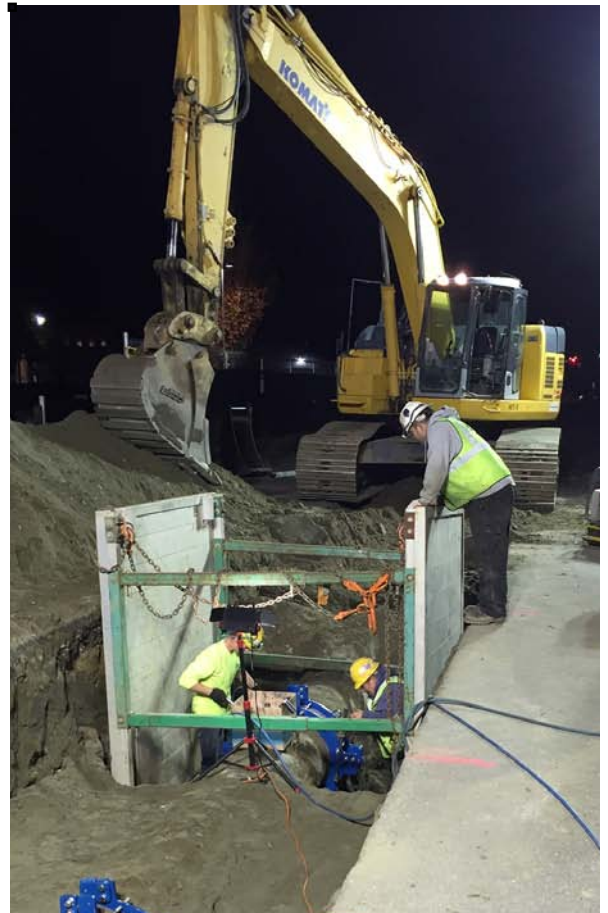
QUARTERLY STATUS REPORT: OCTOBER-DECEMBER 2015



Zanetti School Ready for Demolition Planned for 1/11/16



10/26/15 Utility Work



10/30/15 Overnight Utility Work

QUARTERLY STATUS REPORT: OCTOBER-DECEMBER 2015



11/10/15 Offsite Utilities - Union Street



12/1/15 French Church Haul Road Construction



11/13/15 Offsite Utilities - Patching Union Street

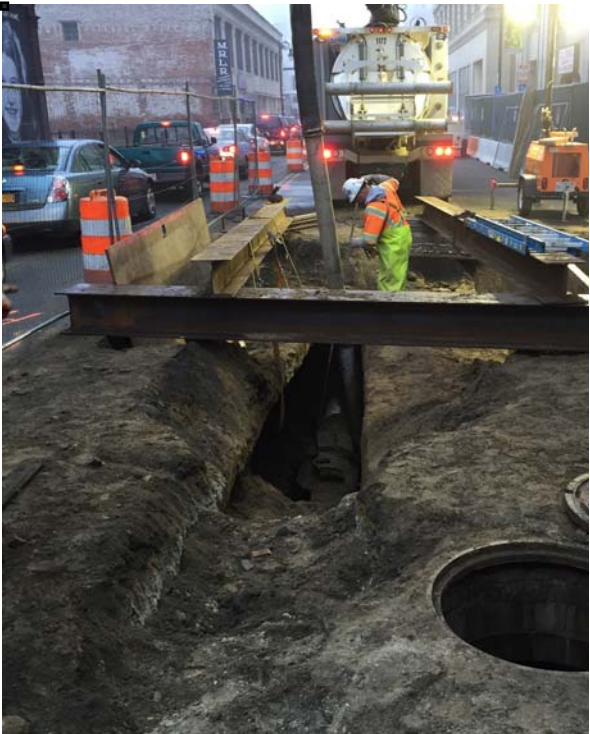
QUARTERLY STATUS REPORT: OCTOBER-DECEMBER 2015



12/7/15 Offsite Utilities



12/7/15 Soil Characterization



12/11/15 Offsite Utilities



QUARTERLY STATUS REPORT: OCTOBER-DECEMBER 2015

135.02.6 The licensee shall have a continuing obligation, pursuant to 205 CMR 120.01(2) to timely provide to the commission an updated permits chart and all documents and information listed in 205 CMR 120.01: Permitting Requirements, as well as any updates to the MEPA process such that the commission is continuously apprised of all material developments with respect to all permits and approvals required for the gaming establishment. Pursuant to 205 CMR 120.01(1)(h) the licensee shall provide to the commission copies of any appeal within 20 days of filing, whether to a municipal or state entity or for judicial review, filed with respect to any permit of approval listed in 205 CMR 120.01(1) along with a copy of the docket sheet and each decision on any appeal.

6 PERMITS

The following is the status of required permits and approvals:

AGENCY OR GOVERNING LEGAL AUTHORITY	PERMIT, REVIEW, OR APPLICATION	DATE APPLICATION SUBMITTED OR ESTIMATED ANTICIPATED APPLICATION DATE
FEDERAL		
1. US Environmental Protection Agency (EPA)	USEPA Construction General Permit	Permit received 2/23/15: USEPA MAR120000
	NPDES General Permit	Permit for Main St. and East Columbus Ave. received 3/9/15: MAR12B410
	NPDES Remediation General Permit (RGP)	Subject to final foundation design
STATE		
1. Massachusetts Gaming Commission	Gaming License	Received 11/7/14
	Findings issued pursuant to M.G.L. ch. 30 sec. 61	Section 61 Findings Approved by MGC on December 17, 2015.
2. Executive Office of Energy and Environmental Affairs	Massachusetts Environmental Policy Act (MEPA) Review	Certificate on Final Environmental Impact Report Received 12/31/14 (EEA 15033); Certificate on Notice of Project Change (NPC) finding no Supplement Environmental Impact Report required issued on November 25, 2016.
3. Massachusetts Department of Environmental Protection (MA DEP)	MA DEP Underground Injection Control (UIC) BRP WS-06	To be filed at project completion
4. Massachusetts Department of Environmental Protection (MA DEP)	Construction Dewatering Permit	Subject to final foundation design

QUARTERLY STATUS REPORT: OCTOBER-DECEMBER 2015

5. Massachusetts Historical Commission (MHC)	Review of project relative to potential effects of State Register historic/ archeological resources	Final Memorandum of Agreement Approved by MGC on December 17, 2015 and Signed by MHC on December 18, 2015 (concurring party signatures pending).
6. Massachusetts Department of Transportation (MassDOT)	Findings pursuant to M.G.L c. 30, sec. 61	Final Road Safety Audits (RSAs) provided to MassDOT in December 2015 consistent with MEPA Certificate. Revised Draft Section 61 Findings Presented to MassDOT on December 23, 2015. MassDOT will issue Section 61 Findings consistent with their review of the FEIR and MGC Section 61 Findings. MassDOT expected to issue section 61 Findings by mid to late January 2015 that will be incorporated by reference into the final MGC Section 61 Findings.
	Category III Application for Permit to Access State Highway	MGM will prepare and submit a 25% design package and Design Exception Report for MassDOT review – assumed to be a Category III Application for Permit to Access State Highway. Upon receipt of the 25% level comments, MGM will prepare a combined 75%/100% design package for MassDOT’s review. Upon receipt of 75/100% level comments, MGM will prepare a PS&E design package for MassDOT’s final review. MassDOT will issue the Highway Access Permit prior to construction of multimodal roadway and traffic control improvements.
7. Massachusetts Department of Housing and Community Development	Chapter 121A Designation as an Urban Redevelopment Project	Approval letter received 12/31/14
8. Massachusetts Department of Public Safety	Elevator Construction Permits	Application to be filed pending final drawings

LOCAL PERMITS AND APPROVALS UPDATE FOR FOURTH QUARTER 2015

1. City of Springfield Department of Public Works	General Roadway Excavation, Trenching	Union Street between East Columbus and Walnut Street, 10/6/15: No. 20152623
		Main Street between Gridiron Street and Union Street, 10/6/15: Nos. 20152609, 20152610
		Union Street between E. Columbus Ave. and Walnut Street, 10/9/15: No. 20152676
		Main Street between Gridiron Street and Union Street, 10/13/15: No. 20152678



QUARTERLY STATUS REPORT: OCTOBER-DECEMBER 2015

		Bliss St. between Main St. and East Columbus Ave., 10/16/15: No. 20152713
		Union St.-S Side-225' W. of Main Street, 10/14/15: No. 923272
		State Street between W. Columbus Ave. and Main Street, 10/23/15: No. 20152762
	Special (Water & Sewer Commission)	East Columbus Ave. between S. end Bridge Ramp and Bruno St., 10/2/15: No. 20152582
		East Columbus Ave. between Bruno St. and State St., 10/19/15: No. 20152725
		East Columbus Ave. between S. end Bridge Ramp and Bruno St., 10/19/15: No. 20152726
		Main Street between Mill and E. Columbus, 10/20/15: No. 20152741
	Construction Management & Temporary Traffic Control Plans	Construction Management & Temporary Traffic Control Plans Revision 1 Approval for Project Site, 11/9/15
2. City of Springfield – Code Enforcement/Building Division	Building Permit Demolition	94 Union Street, 12/22/15: No. 15BDOT-00085ER
3. City of Springfield Historical Commission	MHC Review Concurring Party; Demolition Delay	SHC approved changes to design for purposes of historic resources and revised MOU on October 23, 2015.
4. Springfield City Council	Overlay District Special Permit	Overlay District Special Permit approved by City Council on December 22, 2015.
	Site Plan Review and Amendments to HCA	MGM Site Plan submission deemed completed on November 23, 2015. Hearings before the City Council on the Site Plan review are scheduled for January 19 th and 20 th , 2016 and hearings on the HCA amendments and street closure approvals are schedule for January 25 th and 26 th .
5. City of Springfield Department of Health and Human Services	Food Service Establishment Permit	TBD as venues are finalized
6. City of Springfield – Forestry Division	Municipal Tree Work Permit	Bliss, Howard Streets and Leonardo DaVinci Park, 11/30/15
7. Springfield Water and Sewer Commission	Water and Sewer Connection Permits	Connection permits to be filed mid-2016, pending final drawings.

QUARTERLY STATUS REPORT: OCTOBER-DECEMBER 2015

135.02.7 In furtherance of specific goals for the utilization of minorities, women and veterans on construction jobs, the licensee shall send and provide a copy to the commission, to each labor union or representative of workers with which the licensee has a collective bargaining agreement or other contract of understanding, a notice advising the labor union or workers representative of the licensee's commitments pursuant to M.G.L. c. 23K §(15) and §§21(a)(21) and (22).

7 ORGANIZED LABOR LETTER

The Project Labor Agreement (PLA) was executed on February 26, 2015. Article XVIII on Page 25 of the Agreement states the construction manager and labor unions' commitment to comply with Owner's Diversity and Affirmative Marketing Program as adopted on January 22, 2015.

A copy of the executed PLA is available to the Massachusetts Gaming Commission's Representative for review.

QUARTERLY STATUS REPORT: OCTOBER-DECEMBER 2015

135.02.8 Prior to the gaming establishment opening for business, in furtherance of specific goals for the utilization of minority business enterprises, women business enterprises and veteran business enterprises as vendors in the provision of goods and services to the gaming establishment, the licensee shall provide to the commission an affirmative marketing plan in which the licensee identifies specific goals, expressed as an overall program goal applicable to the total dollar value of contracts entered into, for the utilization of minority business enterprises, women business enterprises and veteran business enterprises to participate as vendors in the provision of goods and services procured by the gaming establishment and any businesses operated as part of the gaming establishment; provided, however, that the specific goals for the utilization of such minority business enterprises, women business enterprises and veteran business enterprises shall be based on the availability of such minority business enterprises, women business enterprises and veteran business enterprises engaged in the type of work to be contracted by the gaming licensee.

8 OPERATIONAL PHASE DIVERSITY PROGRAM FOR EQUAL OPPORTUNITY


MGM's Diversity and Affirmative Marketing Program was approved on January 22, 2015. MGM will comply with this program to meet goals for Diversity participation in the operational phase of the project.

APPENDIX A

LEVEL 1, LEVEL 2 AND DETAILED PROJECT SCHEDULES

Activity ID	Activity Name	Orig Dur	Start	Finish	2016												2017												2018																							
					S	Oct	N	D	Jan	F	M	A	M	J	Jul	A	S	Oct	N	D	Jan	F	M	A	M	J	Jul	A	S	Oct	N	D	Jan	F	M	A	M	J	Jul	A	S											
MGM Springfield Sep 2018 Opening -					[Gantt bar from 3 Jun 14 A to 5 Sep 18]																																															
PROJECT MANAGEMENT					[Gantt bar from 3 Jun 14 A to 5 Sep 18]																																															
PM-100	Referendum Vote / Project Start	0	4.Nov.14 A		[Hatched bar from 4 Nov 14 A to 4 Nov 14 A]																																															
PM-200	Tishman Const Co Released	0	5.Nov.14 A		[Hatched bar from 5 Nov 14 A to 5 Nov 14 A]																																															
PM-999	Construction Completion (TCO): Aug 06, 2018	0		3.Aug.18	[Milestone diamond at 3 Aug 18]																																															
PM-220	I-91 Viaduct (Milestone 03 Beneficial Use): Aug 06, 2018	0		6.Aug.18	[Milestone diamond at 6 Aug 18]																																															
PM-990	Operations Commencement: Sept 5, 2018 (I-91 Milestone 03 +30CD)	0		5.Sep.18*	[Milestone diamond at 5 Sep 18]																																															
Assist MGM with development of Project Criteria					[Gantt bar from 2 Jan 15 A to 31 Dec 15]																																															
PM-918	Parking Garage Concept Design	0		12.Jan.15 A	[Hatched bar from 12 Jan 15 A to 12 Jan 15 A]																																															
PM-926	Begin SD	0	18.Mar.15 A		[Hatched bar from 18 Mar 15 A to 18 Mar 15 A]																																															
PM-920	Kickoff Meeting	0	18.Mar.15 A		[Hatched bar from 18 Mar 15 A to 18 Mar 15 A]																																															
PM-922	Enabling Design – (March)	30	4.Feb.15 A	29.May.15 A	[Hatched bar from 4 Feb 15 A to 29 May 15 A]																																															
PM-910	Budget review	22	2.Jan.15 A	31.Dec.15	[Hatched bar from 2 Jan 15 A to 31 Dec 15]																																															
Negotiate and Finalize Project Labor Agreement					[Gantt bar from 7 Jan 15 A to 26 Feb 15 A]																																															
PM-916	Negotiate and Finalize Project Labor Agreement	39	7.Jan.15 A	26.Feb.15 A	[Hatched bar from 7 Jan 15 A to 26 Feb 15 A]																																															
Mass Gaming Commission					[Gantt bar from 4 Nov 14 A to 5 Sep 18]																																															
1 Statute-Chap 23K					[Gantt bar from 4 Nov 14 A to 6 Nov 15]																																															
MGC-653	Own land within 60 days of license issuance	0		4.Nov.14 A	[Hatched bar from 4 Nov 14 A to 4 Nov 14 A]																																															
MGC-070	Prep & Submit: expected vehicle traffic generated by the site, and plans for mitigatir	10	22.Dec.14 A	31.Dec.14 A	[Hatched bar from 22 Dec 14 A to 31 Dec 14 A]																																															
MGC-063	Prep & Submit: PLA. MGM to show plans for insuring labor harmony during constr &	10	16.Feb.15 A	26.Feb.15 A	[Hatched bar from 16 Feb 15 A to 26 Feb 15 A]																																															
MGC-651	provide a community impact fee to the host community;	0		1.Aug.15 A	[Hatched bar from 1 Aug 15 A to 1 Aug 15 A]																																															
MGC-652	Prep& Submit: Licensees required to (15) provide commission aggr demographic ir	10	1.Aug.15 A	1.Aug.15 A	[Hatched bar from 1 Aug 15 A to 1 Aug 15 A]																																															
MGC-650	Have a certified and binding vote by the host community in favor of the license;	0		1.Aug.15 A	[Hatched bar from 1 Aug 15 A to 1 Aug 15 A]																																															
MGC-067	Prep & Submit: names and addresses of the architects, engineers and designers of	5	2.Nov.15*	6.Nov.15	[Hatched bar from 2 Nov 15* to 6 Nov 15]																																															
2 Licensing Agreement					[Gantt bar from 14 Mar 18 to 9 May 18]																																															
MGC-655	Prep& Submit: create plan to identify potential local vendor in ninety (90) days fr Eff	10	14.Mar.18	27.Mar.18	[Hatched bar from 14 Mar 18 to 27 Mar 18]																																															
MGC-656	Rev& Approv: create plan to identify potential local vendor in ninety (90) days fr Effe	10	26.Apr.18	9.May.18	[Hatched bar from 26 Apr 18 to 9 May 18]																																															
3 205 CMR					[Gantt bar from 17 Feb 15 A to 28 Aug 18]																																															
MGC-136	Prep & Submit: Affirmative Action Plan	1	17.Feb.15 A	27.Feb.15 A	[Hatched bar from 17 Feb 15 A to 27 Feb 15 A]																																															
MGC-149	Submit Schematic Designs	0		2.Nov.15	[Hatched bar from 2 Nov 15 to 2 Nov 15]																																															
MGC-658	Prep& Submit: The commission's representative may request construction package	10	10.Dec.15	23.Dec.15	[Hatched bar from 10 Dec 15 to 23 Dec 15]																																															
MGC-659	Prep& Submit: The commission may request or have access to, at any time, plans s	0		10.Aug.16	[Hatched bar from 10 Aug 16 to 10 Aug 16]																																															
MGC-171	MGC Requested Review - Access; eg doors, locking systems, sally port (front - vers	0		11.Aug.16	[Hatched bar from 11 Aug 16 to 11 Aug 16]																																															
MGC-172	MGC Requested Review - Location of staff entrance	0		11.Aug.16	[Hatched bar from 11 Aug 16 to 11 Aug 16]																																															
MGC-173	MGC Requested Review - Location of security office	0		11.Aug.16	[Hatched bar from 11 Aug 16 to 11 Aug 16]																																															
MGC-174	MGC Requested Review - Number, nature and type of conx pts between gaming an	0		11.Aug.16	[Hatched bar from 11 Aug 16 to 11 Aug 16]																																															
MGC-175	MGC Requested Review - Surveillance coverage (location and types of cameras)	0		11.Aug.16	[Hatched bar from 11 Aug 16 to 11 Aug 16]																																															
MGC-176	MGC Requested Review - Surveillance monitoring (eg location of surv rm, dedicate	0		11.Aug.16	[Hatched bar from 11 Aug 16 to 11 Aug 16]																																															
MGC-177	MGC Requested Review-Count rm layout & design (eg size, reinf walls, washrm, mc	0		11.Aug.16	[Hatched bar from 11 Aug 16 to 11 Aug 16]																																															
MGC-178	MGC Requested Review - Cage layout (eg mantrap, reinforced walls, window design)	0		11.Aug.16	[Hatched bar from 11 Aug 16 to 11 Aug 16]																																															
MGC-179	MGC Requested Review - Slot floor layout (eg placement of machines, services, int	0		11.Aug.16	[Hatched bar from 11 Aug 16 to 11 Aug 16]																																															
MGC-180	MGC Requested Review - Access to gaming floor (eg adequacy of security position	0		11.Aug.16	[Hatched bar from 11 Aug 16 to 11 Aug 16]																																															
MGC-181	MGC Requested Review - Regulator office space (eg size, location, IT Requirements	0		11.Aug.16	[Hatched bar from 11 Aug 16 to 11 Aug 16]																																															
MGC-182	MGC Requested Review - Policing agency space (eg office size, interview areas, hr	0		11.Aug.16	[Hatched bar from 11 Aug 16 to 11 Aug 16]																																															
MGC-183	MGC Requested Review - Responsible gaming space (eg size, access and placem	0		11.Aug.16	[Hatched bar from 11 Aug 16 to 11 Aug 16]																																															
MGC-184	MGC Requested Review - Sensitive areas (eg definition (cage, count room, surveill	0		11.Aug.16	[Hatched bar from 11 Aug 16 to 11 Aug 16]																																															
MGC-185	MGC Requested Review - Building system specs	0		11.Aug.16	[Hatched bar from 11 Aug 16 to 11 Aug 16]																																															
MGC-186	MGC Requested Review - i. back-up generator	0		11.Aug.16	[Hatched bar from 11 Aug 16 to 11 Aug 16]																																															

■ Remaining Level of Effort ■ Critical Re...
■ Actual Work ◆ Milestone
■ Remaining Work ⇨ Summary





Activity ID	Activity Name	Orig Dur	Start	Finish	2016												2017												2018											
					S	Oct	N	D	Jan	F	M	A	M	J	Jul	A	S	Oct	N	D	Jan	F	M	A	M	J	Jul	A	S	Oct	N	D	Jan	F	M	A	M	J	Jul	A
Design Summary					427 2.Jan.15 A 8.Sep.16																																			
DES-154	Develop packaging approach	30	4.Feb.15 A	27.Apr.15 A	[Bar chart showing activity duration]																																			
DES-108	Full Consultant Team On Board (excl Int Designers)	40	2.Jan.15 A	27.Apr.15 A	[Bar chart showing activity duration]																																			
DES-172	Schematic Design 10 weeks	50	18.Mar.15 A	29.May.15 A	[Bar chart showing activity duration]																																			
DES-174	MGM / City of Sprfd Project Scope Reconciliation	15	15.Jul.15 A	16.Nov.15	[Bar chart showing activity duration]																																			
DES-182	Project Budget Reconciliation	14	17.Nov.15	7.Dec.15	[Bar chart showing activity duration]																																			
DES-184	REVISED Schematic Design (Core & Shell)	65	17.Nov.15	18.Feb.16	[Bar chart showing activity duration]																																			
PKG-05a	Pkg 5a - 95 State St Interior Gut	0		3.Mar.16	[Milestone diamond]																																			
DES-178	Design Development 12 weeks (Core & Shell)	60	7.Mar.16	31.May.16	[Bar chart showing activity duration]																																			
DES-180	Construction Docs 14 weeks (Core & Shell)	70	1.Jun.16	8.Sep.16	[Bar chart showing activity duration]																																			
Freidmutter Group Design Packages					317 2.Oct.15 A 5.Jan.17																																			
PKG-01	Pkg 1 - DB Parking Garage / Bridge Docs	0		2.Oct.15 A	[Milestone diamond]																																			
PKG-03	Pkg 3 - Armory Structure & Shell Pkg	0		7.Mar.16	[Milestone diamond]																																			
PKG-02a	Pkg 2a - Hotel Twr Core & Shell	0		16.May.16	[Milestone diamond]																																			
PKG-04	Pkg 4 - Podium Core & Shell	0		16.May.16	[Milestone diamond]																																			
PKG-06	Pkg 6 - Landscape Hardscape Drainage 70%	0		16.May.16	[Milestone diamond]																																			
PKG-02b	Pkg 2b - Hotel Facade Pkg & Mock Up	0		16.May.16	[Milestone diamond]																																			
PKG-05b	Pkg 5b - 95 State St Fit Out	0		7.Jun.16	[Milestone diamond]																																			
PKG-20	Pkg 20 - 101 State St Minor Upgrades	0		7.Jun.16	[Milestone diamond]																																			
PKG-08	Pkg 8 - Adjacent Roadwork - TEC/Allen Major	0		1.Aug.16	[Milestone diamond]																																			
PKG-07	Pkg 7 - Offsite Roadway - TEC	0		1.Aug.16	[Milestone diamond]																																			
PKG-12	Pkg 12 - Daycare	0		4.Aug.16	[Milestone diamond]																																			
PKG-14	Pkg 14 - Starbucks	0		2.Sep.16	[Milestone diamond]																																			
PKG-13b	Pkg 13b - Hotel FF&E	0		2.Sep.16	[Milestone diamond]																																			
PKG-15	Pkg 15 - Landscape Hardscape FINAL Sitework	0		2.Sep.16	[Milestone diamond]																																			
PKG-13a	Pkg 13a - Hotel Interiors	0		2.Sep.16	[Milestone diamond]																																			
PKG-10	Pkg 10 - Podium Fit Out	0		14.Sep.16	[Milestone diamond]																																			
PKG-09	Pkg 9 - Food Court 1,2,3,4 Seating , RR's	0		14.Sep.16	[Milestone diamond]																																			
PKG-11	Pkg 11 - Venue A,B & Tap Bar fit out	0		10.Nov.16	[Milestone diamond]																																			
PKG-16	Pkg 16 - Hotel Public Spaces (Lobby, Lob Bar, Rtl)	0		23.Nov.16	[Milestone diamond]																																			
PKG-18	Pkg 18 - Podium Banquet Rms, Pre-Func, RR's	0		22.Dec.16	[Milestone diamond]																																			
PKG-17	Pkg 17 - Spa, Salon, Fitness	0		22.Dec.16	[Milestone diamond]																																			
PKG-19	Pkg 19 - Armory Fit Out	0		5.Jan.17	[Milestone diamond]																																			
Site Investigations:					226 10.Nov.14 A 23.Nov.15																																			
Geotech					100 10.Nov.14 A 27.Jul.15 A																																			
DES-111	Geotech (Site Work)	50	10.Nov.14 A	8.May.15 A	[Bar chart showing activity duration]																																			
DES-113	Geotech Report & Fdn Recommendations	15	11.May.15 A	27.Jul.15 A	[Bar chart showing activity duration]																																			
Existing Conditions Surveys Environmental:					187 3.Feb.15 A 23.Nov.15																																			
Phase 1					43 3.Feb.15 A 26.Mar.15 A																																			
TR-208	Howard St School	5	3.Feb.15 A	24.Feb.15 A	[Bar chart showing activity duration]																																			
TR-206	Armory	20	3.Feb.15 A	26.Mar.15 A	[Bar chart showing activity duration]																																			
TR-220	Union/ Chandler House	20	26.Feb.15 A	26.Mar.15 A	[Bar chart showing activity duration]																																			
TR-223	68 Union Car Wash	20	3.Feb.15 A	26.Mar.15 A	[Bar chart showing activity duration]																																			
TR-211	33-37 Bliss French Church	20	3.Feb.15 A	26.Mar.15 A	[Bar chart showing activity duration]																																			
TR-209	82 Howard St	20	3.Feb.15 A	26.Mar.15 A	[Bar chart showing activity duration]																																			
Phase 2					126 26.Feb.15 A 7.Aug.15 A																																			
TR-210	United Electric / 73 State	10	3.Mar.15 A	26.Mar.15 A	[Bar chart showing activity duration]																																			
TR-212	Office Bldg. 79 State	10	3.Mar.15 A	26.Mar.15 A	[Bar chart showing activity duration]																																			
TR-229	1345-1357 E Columbus - Robbie's Auto	5	3.Mar.15 A	26.Mar.15 A	[Bar chart showing activity duration]																																			

■ Remaining Level of Effort ■ Critical Re...
■ Actual Work ◆ Milestone
■ Remaining Work ◀ Summary



Activity ID	Activity Name	Orig Dur	Start	Finish	2016												2017												2018																										
					S	Oct	N	D	Jan	F	M	A	M	J	Jul	A	S	Oct	N	D	Jan	F	M	A	M	J	Jul	A	S	Oct	N	D	Jan	F	M	A	M	J	Jul	A	S														
Early Works Packages																																																							
PRO-105	Abate/Demo Pkg 1 Zanetti (Incl Clear & Grub) (Prequal-Procure)	20	16.Feb.15 A	11.Mar.15 A																																																			
PRO-104	Site Fence, Guard Shacks, Construction Trailers	20	25.Feb.15 A	9.Apr.15 A																																																			
PRO-106	Probe program	20	25.Feb.15 A	10.Apr.15 A																																																			
PRO-107	Abate/Demo Pkg 2 68 Union / 53 Howard/ Armory / (Prequal-Procure)	30	1.Apr.15 A	24.Apr.15 A																																																			
PRO-111	Abate/Demo Pkg 5 Robbies/ 82 Howrd/ Parc 1C/ Edisonia/ 1126 Main/ 1120 Main/ 1	20	1.Apr.15 A	8.May.15 A																																																			
PRO-124	Buy: 73 State Stabilization of existing structures	15	27.Apr.15 A	5.Jun.15 A																																																			
PRO-108	Relocation of French Congregational Church	20	27.Apr.15 A	5.Jun.15 A																																																			
PRO-109	Abate/Demo Pkg 3 Union-Ch/ 73ST/ 79 ST/ Fr Church (Prequal-Procure)	20	17.Mar.15 A	5.Jun.15 A																																																			
PRO-115	Abate/Demo Pkg 7 YWCA (Prequal-Procure)	20	3.Jun.15 A	30.Jun.15 A																																																			
PRO-183	Buy: Union/Chandler Stabilization of existing structures	20	7.Jan.16	3.Feb.16																																																			
PRO-113	Abate/Demo Pkg 6 Mission (Prequal-Procure)	20	25.Jan.16	19.Feb.16																																																			
PRO-110	Abate/Demo Pkg 4 95 ST (Prequal-Procure)	20	4.Mar.16	31.Mar.16																																																			
PRO-117	Procure Mass Ex (Pkg Garage / Podium) / Final Award	20	16.May.16	13.Jun.16																																																			
Tenant Relocation																																																							
Relocation of Church																																																							
TR-232	Feasibility Study	20	2.Feb.15 A	14.Apr.15 A																																																			
TR-238	Confirm route	15	20.Mar.15 A	14.Apr.15 A																																																			
PHASE I (Parking Garage):																																																							
65 Howard / Zanetti School																																																							
TR-102	Building Vacated	0	19.Sep.14 A	19.Sep.14 A																																																			
Parking lot: 53- 57 Bliss & 48 Howard																																																							
TR-114	Closed by	0	31.Dec.14 A	31.Dec.14 A																																																			
TR-116	Vacated by	1	31.Dec.14 A	31.Dec.14 A																																																			
Parking lot: 61 Bliss Street																																																							
TR-108	Closed by	0	25.Nov.14 A	25.Nov.14 A																																																			
TR-110	Vacated by	1	25.Nov.14 A	25.Nov.14 A																																																			
Parking lot: NS Howard Street																																																							
TR-234	Closed by	0	5.Dec.14 A	12.Dec.14 A																																																			
TR-236	Vacated by	1	6.Dec.14 A	12.Dec.14 A																																																			
Parking lot: 69-71 Bliss Street																																																							
TR-104	Closed by	0	5.Nov.14 A	21.Nov.14 A																																																			
TR-106	Vacated by	12	6.Nov.14 A	21.Nov.14 A																																																			
1357 E. Columbus / Robbies Auto																																																							
TR-112	Closed by	0	30.Dec.14 A	31.Mar.15 A																																																			
TR-118	Vacated by	5	31.Dec.14 A	31.Mar.15 A																																																			
82-84 Howard / Rectory																																																							
TR-120	Closed by	0	1.Dec.14 A	14.Dec.14 A																																																			
TR-122	Vacated by	10	1.Dec.14 A	14.Dec.14 A																																																			
68 Union (Car Wash) & 53 Howard St (Parking)																																																							
TR-124	Closed by	0	2.Dec.14 A	2.Dec.14 A																																																			
TR-126	Vacated by	1	2.Dec.14 A	2.Dec.14 A																																																			
29 Howard / State Armory Bldg.																																																							
TR-128	Building Vacated	0	2.Dec.14 A	2.Dec.14 A																																																			
PHASE II (Hotel Tower):																																																							
73 State / United Electric Building																																																							
TR-246	Closed by	0	2.Dec.14 A	30.Mar.15 A																																																			
TR-130	Notification period	15	2.Dec.14 A	4.Dec.14 A																																																			
TR-248	Vacated by	42	5.Jan.15 A	30.Mar.15 A																																																			

■ Remaining Level of Effort ■ Critical Re...
■ Actual Work ◆ Milestone
■ Remaining Work ◆ Milestone
→ Summary




Activity ID	Activity Name	Orig Dur	Start	Finish	2016												2017												2018																													
					S	Oct	N	D	Jan	F	M	A	M	J	Jul	A	S	Oct	N	D	Jan	F	M	A	M	J	Jul	A	S	Oct	N	D	Jan	F	M	A	M	J	Jul	A	S																	
Tower Crane																																																										
HT-TC-02	Hotel Twr Crane P.E. Eng Base & Hoist	10	18.May.16	13.Jul.17																																																						
HT-TC-04	Erect Tower Crane	5	12.Sep.16	16.Sep.16																																																						
HT-TC-08	Tower Crane In Operation	201	19.Sep.16	6.Jul.17																																																						
HT-TC-06	Remove Tower Crane	5	7.Jul.17	13.Jul.17																																																						
Hoist																																																										
HT-HST-04	Erect Hoist	5	24.May.17	31.May.17																																																						
HT-HST-08	Hoist In Operation	161	1.Jun.17	19.Jan.18																																																						
HT-HST-06	Remove Hoist	10	22.Jan.18	2.Feb.18																																																						
Foundation																																																										
HT-FDN-10	Soldier Pile & Lagging	10	9.Sep.16	22.Sep.16																																																						
HT-FDN-12	Abandon Existing Side Walk Vaults	15	23.Sep.16	14.Oct.16																																																						
HT-FDN-14	Foundation Elements	50	11.Aug.16	25.Oct.16																																																						
HT-FDN-16	Under Slab Mud Mat	5	19.Oct.16	25.Oct.16																																																						
HT-FDN-18	Pre-Proof Waterproofing & Bottom Layer Reinforcing @ Pits	15	26.Oct.16	17.Nov.16																																																						
HT-FDN-20	MEP Under Slab in Hotel Mat & Test	25	26.Oct.16	5.Dec.16																																																						
HT-FDN-22	FR&P Hotel Twr Structural Slab	25	26.Oct.16	5.Dec.16																																																						
HT-FDN-24	Hotel Ready for Superstructure	0		5.Dec.16																																																						
Hotel Superstructure																																																										
Erect Steel																																																										
HT-ES-02	Erect thru Level 2	10	9.Mar.17	23.Mar.17																																																						
HT-ES-03	Erect thru Level 3	10	27.Mar.17	10.Apr.17																																																						
HT-ES-04	Erect thru Level 4	10	6.Apr.17	20.Apr.17																																																						
HT-ES-05	Erect thru Level 5	10	24.Apr.17	8.May.17																																																						
HT-ES-06	Erect thru Level 6	10	9.May.17	23.May.17																																																						
HT-ES-07	Erect thru Level 7	10	24.May.17	7.Jun.17																																																						
HT-ES-08	Erect thru Level 8	10	8.Jun.17	21.Jun.17																																																						
HT-ES-RF	Erect thru Level Roof	10	22.Jun.17	6.Jul.17																																																						
Working Deck																																																										
HT-WD-02	Working Deck Level 2	10	24.Apr.17	8.May.17																																																						
HT-WD-03	Working Deck Level 3	10	9.May.17	23.May.17																																																						
HT-WD-04	Working Deck Level 4	10	22.May.17	5.Jun.17																																																						
HT-WD-05	Working Deck Level 5	10	6.Jun.17	19.Jun.17																																																						
HT-WD-06	Working Deck Level 6	10	20.Jun.17	3.Jul.17																																																						
HT-WD-07	Working Deck Level 7	10	5.Jul.17	18.Jul.17																																																						
HT-WD-08	Working Deck Level 8	10	19.Jul.17	1.Aug.17																																																						
HT-WD-RF	Working Deck Level Roof	10	2.Aug.17	15.Aug.17																																																						
Bolt Up / Welding																																																										
HT-BU-02	Bolt Up / Weld Level 2	10	24.Apr.17	8.May.17																																																						
HT-BU-03	Bolt Up / Weld Level 3	10	9.May.17	23.May.17																																																						
HT-BU-04	Bolt Up / Weld Level 4	10	22.May.17	5.Jun.17																																																						
HT-BU-05	Bolt Up / Weld Level 5	10	6.Jun.17	19.Jun.17																																																						
HT-BU-06	Bolt Up / Weld Level 6	10	20.Jun.17	3.Jul.17																																																						
HT-BU-07	Bolt Up / Weld Level 7	10	5.Jul.17	18.Jul.17																																																						
HT-BU-08	Bolt Up / Weld Level 8	10	19.Jul.17	1.Aug.17																																																						
HT-BU-RF	Bolt Up / Weld Level Roof	10	2.Aug.17	15.Aug.17																																																						
Metal Deck																																																										
HT-MD-02	Metal Deck Detailing Level 2	10	9.May.17	23.May.17																																																						
HT-MD-03	Metal Deck Detailing Level 3	10	24.May.17	7.Jun.17																																																						

■ Remaining Level of Effort ■ Critical Re...
■ Actual Work ◆ Milestone
■ Remaining Work ⇨ Summary



Activity ID	Activity Name	Orig Dur	Start	Finish	2016												2017												2018											
					S	Oct	N	D	Jan	F	M	A	M	J	Jul	A	S	Oct	N	D	Jan	F	M	A	M	J	Jul	A	S	Oct	N	D	Jan	F	M	A	M	J	Jul	A
Porte Cochere																																								
HT-PC	Porte Cochere Summary	145	21.Feb.17	15.Sep.17																																				
Fit Out																																								
1st Floor Hotel Lobby																																								
HT-01-00	Lobby Fit Out Summary	130	4.Dec.17	7.Jun.18																																				
2nd Floor																																								
HT-02-02	2ndFlr: Start Fit Out	0	5.Oct.17																																					
HT-02-04	2ndFlr: Layout	5	5.Oct.17	12.Oct.17																																				
HT-02-06	2ndFlr: Exhaust Shafts	5	13.Oct.17	19.Oct.17																																				
HT-02-08	2ndFlr: Laundry Chutes	5	13.Oct.17	19.Oct.17																																				
HT-02-12	2ndFlr: Prefab Shower Bases / Tubs	10	20.Oct.17	2.Nov.17																																				
HT-02-14	2ndFlr: Framing / Bucks (incl Soffits)	15	13.Oct.17	2.Nov.17																																				
HT-02-16	2ndFlr: Plumbing Roughing	20	3.Nov.17	1.Dec.17																																				
HT-02-18	2ndFlr: HVAC Roughing / VFC Units	25	3.Nov.17	8.Dec.17																																				
HT-02-20	2ndFlr: Elec Roughing	30	3.Nov.17	15.Dec.17																																				
HT-02-22	2ndFlr: Sprinkler Roughing	20	17.Nov.17	15.Dec.17																																				
HT-02-24	2ndFlr: Firestop (need Temp Roof Above)	5	18.Dec.17	22.Dec.17																																				
HT-02-26	2ndFlr: Insulation	5	18.Dec.17	22.Dec.17																																				
HT-02-27	2ndFlr: MEP Rough Inspections	5	18.Dec.17	22.Dec.17																																				
HT-02-28	2ndFlr: Firestopping / Insulation Insp - City/QC	1	26.Dec.17	26.Dec.17																																				
HT-02-31	2ndFlr: Frame Suspended Drywall Ceilings	10	27.Dec.17	10.Jan.18																																				
HT-02-29	2ndFlr: Sheetrock Walls & Ceilings	25	28.Dec.17	1.Feb.18																																				
HT-02-30	2ndFlr: Tape & Spackle	20	12.Jan.18	8.Feb.18																																				
HT-02-32	2ndFlr: Prep Floor Substrate / Tile	15	19.Jan.18	8.Feb.18																																				
HT-02-40	2ndFlr: Prime Paint Walls / Clgs	10	2.Feb.18	15.Feb.18																																				
HT-02-48	2ndFlr: Vanities	5	16.Feb.18	22.Feb.18																																				
HT-02-36	2ndFlr: Carpet / Flooring	10	9.Feb.18	22.Feb.18																																				
HT-02-38	2ndFlr: Wood Trim & Base / Millwork	15	23.Feb.18	15.Mar.18																																				
HT-02-50	2ndFlr: Entry Doors / Doors & Hardware	10	2.Mar.18	15.Mar.18																																				
HT-02-52	2ndFlr: Final Paint	15	2.Mar.18	22.Mar.18																																				
HT-02-42	2ndFlr: Light Fixtures	10	16.Mar.18	29.Mar.18																																				
HT-02-44	2ndFlr: Elec Devices / Termination	10	16.Mar.18	29.Mar.18																																				
HT-02-46	2ndFlr: Plumbing Finishes & Fixtures	10	16.Mar.18	29.Mar.18																																				
HT-02-54	2ndFlr: Punch & Clean / Final Inspections	5	30.Mar.18	5.Apr.18																																				
HT-02-56	2ndFlr: Complete / Ready for Corridor Carpet	0		5.Apr.18																																				
3rd Floor																																								
HT-03-02	3rdFlr: Start Fit Out	0	3.Nov.17																																					
HT-03-04	2ndFlr: Layout	5	3.Nov.17	9.Nov.17																																				
HT-03-06	2ndFlr: Exhaust Shafts	5	10.Nov.17	16.Nov.17																																				
HT-03-08	2ndFlr: Laundry Chutes	5	10.Nov.17	16.Nov.17																																				
HT-03-12	2ndFlr: Prefab Shower Bases / Tubs	10	17.Nov.17	1.Dec.17																																				
HT-03-14	2ndFlr: Framing / Bucks (incl Soffits)	15	10.Nov.17	1.Dec.17																																				
HT-03-16	2ndFlr: Plumbing Roughing	20	4.Dec.17	2.Jan.18																																				
HT-03-18	2ndFlr: HVAC Roughing / VFC Units	25	4.Dec.17	9.Jan.18																																				
HT-03-20	2ndFlr: Elec Roughing	30	4.Dec.17	16.Jan.18																																				
HT-03-22	2ndFlr: Sprinkler Roughing	20	18.Dec.17	16.Jan.18																																				
HT-03-24	2ndFlr: Firestop (need Temp Roof Above)	5	17.Jan.18	23.Jan.18																																				
HT-03-26	2ndFlr: Insulation	5	17.Jan.18	23.Jan.18																																				
HT-03-27	2ndFlr: MEP Rough Inspections	5	17.Jan.18	23.Jan.18																																				

■ Remaining Level of Effort ■ Critical Re...
■ Actual Work ◆ Milestone
■ Remaining Work ⇨ Summary



Activity ID	Activity Name	Orig Dur	Start	Finish	2016														2017														2018																						
					S	Oct	N	D	Jan	F	M	A	M	J	Jul	A	S	Oct	N	D	Jan	F	M	A	M	J	Jul	A	S	Oct	N	D	Jan	F	M	A	M	J	Jul	A	S														
Procurement																																																							
DAV-300	Procurement	40	24.May.17	20.Jul.17																																																			
Fabrication																																																							
DAV-400	Fab & Deliver	40	28.Dec.17	22.Feb.18																																																			
Construction																																																							
DAV-500	Construction	100	23.Feb.18	17.Jul.18																																																			
DAYCARE																																																							
Design																																																							
DAY-112	Construction Documents (CD)	50	25.May.16	4.Aug.16																																																			
DAY-114	Owner Approval CD	5	5.Aug.16	11.Aug.16																																																			
Permitting																																																							
DAY-118	50% CD Permitting Submission	40	30.Jun.16	25.Aug.16																																																			
Procurement																																																							
DAY-120	Procurement	40	5.Aug.16	30.Sep.16																																																			
Fabrication																																																							
DAY-122	Fab & Deliver	60	20.Jul.17	13.Oct.17																																																			
Construction																																																							
DAY-116	Summary	140	16.Oct.17	3.May.18																																																			
DAY-117	LEED Platinum Commissioning	40	8.Mar.18	3.May.18																																																			
ENTERTAINMENT BLK (F/O)																																																							
Procurement																																																							
EB-TS-12	PROCURE HOODS & WALK-IN COOLERS	110	12.May.17	18.Oct.17																																																			
EB-TS-10	PROCURE FOOD SERVICE EQUIPMENT (DA/DB PACKAGE)	154	15.May.17	21.Dec.17																																																			
Interior Fit Outs																																																							
1st Flr Bowling																																																							
EB-BOW-100	1st Flr Bowling Start	0	6.Sep.17																																																				
EB-BOW-900	1st Flr Bowling Complete	0		19.Feb.18																																																			
EB-BOW-102	1st Flr Bowling	115	6.Sep.17	19.Feb.18																																																			
Tap Sportsbar																																																							
Kitchen																																																							
EB-TS-32	FRAME WALLS/DOOR FRAMES	30	6.Sep.17	18.Oct.17																																																			
EB-TS-30	INSTALL HOODS & WALK-IN COOLERS	10	19.Oct.17	1.Nov.17																																																			
EB-TS-34	HANG & INSTALL GREASE DUCT	10	19.Oct.17	1.Nov.17																																																			
EB-TS-16	MEPS ROUGH-IN WALLS/BACKING	15	19.Oct.17	8.Nov.17																																																			
EB-TS-38	TERMINATE HOOD TO GREASE DUCT/WRAP	5	2.Nov.17	8.Nov.17																																																			
EB-TS-28	DRYWALL & TAPE WALLS	20	9.Nov.17	7.Dec.17																																																			
EB-TS-36	INSTALL CEILING GRID	5	8.Dec.17	14.Dec.17																																																			
EB-TS-24	FRP/STAINLESS WALL COVERING	10	8.Dec.17	21.Dec.17																																																			
EB-TS-26	INSTALL QUARRY TILE FLOOR	10	8.Dec.17	21.Dec.17																																																			
EB-TS-22	MEPS DROPS TO GRID	10	15.Dec.17	29.Dec.17																																																			
EB-TS-20	INSTALL CEILING TILE	10	2.Jan.18	15.Jan.18																																																			
EB-TS-14	INSTALL FOOD SERVICE EQUIPMENT	20	22.Dec.17	22.Jan.18																																																			
EB-TS-56	Install Specialty Equipment	20	22.Dec.17	22.Jan.18																																																			
EB-TS-18	MEPS WALL/CEILING TRIM	10	16.Jan.18	29.Jan.18																																																			
EB-TS-48	3RD PARTY SCENARIO / DEVICE VERIFICATION	10	30.Jan.18	12.Feb.18																																																			
EB-TS-42	FLS PRE-TESTING (CONTRACTORS)	15	30.Jan.18	19.Feb.18																																																			
EB-TS-40	3RD PARTY REPORT	30	20.Feb.18	2.Apr.18																																																			
EB-TS-46	City of Spfld / 3RD PARTY FINAL	10	3.Apr.18	17.Apr.18																																																			

█ Remaining Level of Effort █ Critical Re...
█ Actual Work ◆ Milestone
█ Remaining Work ⇨ Summary



APPENDIX B

DIVERSITY AND COMMUNITY OUTREACH SUMMARY

OCTOBER-DECEMBER 2015

MGM Springfield
WBE/MBE/VBE Companies Met with October-December 2015

Ref	Company	Location	Diversity Status
1	Dirty Girl Disposal	Millbury, MA	WBE
2	C & C Janitorial Supplies	Newington, CT	WBE/MBE
3	Jones Realty, LLC.	Springfield, MA	MBE
4	Moor Metals	Holliston, MA	MBE
5	Soltrix Technology Solutions, Inc.	Westborough, MA	WBE/MBE
6	Baker Steel Detailing, LLC.	Fall River, MA	WBE
7	Palmer Trailer Supply	Palmer, MA	WBE
8	White Glove Cleaning, LLC.	Springfield, MA	MBE
9	Consolidated Brick & Building Supplies, Inc.	Avon, MA	WBE
10	Baystate Alarm Security	Marlborough, MA	VBE
11	Aulson Company, Inc.	Methuen, MA	VBE
12	Alares LLC.	Quincy, MA	VBE
13	Francis Whitty/TMR Development	Middleboro, MA	VBE
14	Hernandez Consulting LLC.	Boston, MA	VBE
15	Steere Engineering, Inc.	Warwick, RI	WBE
16	C & C Contractors, LLC.	Springfield, MA	MBE
17	Federal Concrete Inc.	Hopedale, MA	WBE
18	Andelman and Lelek Engineering, Inc.	Norwood, MA	WBE
19	AAC Investments, LLC. dba Avenue Interior Design	Los Angeles, CA	WBE
20	C4 Cable	Taunton, MA	WBE
21	Capasso Restoration Inc.	North Haven, CT	WBE
22	Communications for Design	Northfield, MN	WBE
23	Dietz & Company Architects	Springfield, MA	WBE
24	Eastern General Contractors, Inc.	Springfield, MA	MBE
25	Fennick McCredie Architecture	Boston, MA	WBE
26	J & J Construction, Inc.	North Billerica, MA	MBE
27	JRL Construction, Inc.	Springfield, MA	VBE
28	Military Construction LLC.	Wayne, PA	VBE
29	Mise Design Group, LLC.	Pottstown, PA	VBE

MGM Springfield**Individual Community Group Meetings Held October-December 2015**

Ref	Name	Location
1	Greater New England Minority Supplier Development Council	Northeast Region
2	Community Works	Springfield, MA
3	Association of Black Businesses and Professionals	Springfield, MA
4	Uptown Construction Collaborative	Springfield, MA
5	National Association of Minority Contractors	Springfield, MA Chapter
6	East Africa Cultural Center	Springfield, MA
7	City of Springfield Dept. of Veteran Services	Springfield, MA
8	NABVETS	Springfield, MA
9	City of Springfield Dept. of Veteran Services	Springfield, MA
10	American Legion	Massachusetts Headquarters
11	Bilingual Veterans Outreach Center	Springfield, MA
12	Community Works	Springfield, MA
13	Association of Black Businesses and Professionals	Springfield, MA
14	Carpenters Union #108	Springfield, MA
15	Partners for Community	Springfield, MA
16	Uptown Construction Collaborative	Springfield, MA
17	A.W.A.K.E. Inc.	Springfield, MA
18	American Legion	Springfield, MA
19	Association of Black Businesses and Professionals	Springfield, MA
20	Carpenters Union #108	Springfield, MA
21	City of Springfield Veteran Services	Springfield, MA
22	Community Works	Springfield, MA
23	East Africa Cultural Center	Springfield, MA
24	Greater Springfield NAACP	Springfield, MA
25	Ironworkers Union #7	Springfield, MA
26	Partners for Community	Springfield, MA
27	Uptown Construction Collaborative	Springfield, MA

APPENDIX C

DIVERSITY COMMITMENTS – DESIGN AND CONSTRUCTION

AS OF DECEMBER 31, 2015

MGM Springfield

Diversity Commitment Summary - Construction And Design

As of: December 31, 2015

Construction And Design

Ref	Group	Project Goals	Commitments	Variance	Company Count	Value (In Millions)
1	WBE	10.0%	10.3%	0.3%	22	\$ 4.13
2	MBE	5.0%	12.1%	7.1%	12	\$ 4.88
3	VBE	2.0%	2.2%	0.2%	6	\$ 0.90

Construction

Ref	Group	Project Goals	Commitments	Variance	Company Count	Value (In Millions)
1	WBE	10.0%	12.1%	2.1%	17	\$ 3.70
2	MBE	5.0%	15.2%	10.2%	11	\$ 4.62
3	VBE	2.0%	2.9%	0.9%	5	\$ 0.90

Design

Ref	Group	Project Goals	Commitments	Variance	Company Count	Value (In Millions)
1	WBE	10.0%	4.4%	(5.6%)	5	\$ 0.43
2	MBE	5.0%	2.6%	(2.4%)	1	\$ 0.26
3	VBE	2.0%	0.0%	(2.0%)	1	\$ -

Notes:

(1) Stevens & Associates is a VBE design company that is being billed through Tishman. They are being counted as a VBE design firm but the contract value is \$0 because it is being carried in the construction commitments.

MGM Springfield

Diversity Commitment Summary - Design And Consulting - WBE

As of: December 31, 2015

Ref	Company	Scope	Location
1	Convergent Technologies Design Group, Inc.	Acoustics/ Audio Visual/ IT/ Low Voltage	Lockport, NY 14094
2	Copley Wolff Design Group, Inc.	Full Landscape Architectural Services	Boston, MA 02116
3	Dietz & Company Architects, Inc.	Full Service Architecture and Interior Design	Springfield, MA 01103
4	MCLA, Inc.	Lighting	Washington, DC 20007
5	Soden Sustainability Consulting, LLC	LEED	Winchester, MA 01890

MGM Springfield

Diversity Commitment Summary - Design And Consulting - MBE

As of: December 31, 2015

Ref	Company	Scope	Location
1	Desman, Inc.	Parking Garage Bridging Documents (LOA)	Boston, MA 02108

MGM Springfield

Diversity Commitment Summary - Design And Consulting - VBE

As of: December 31, 2015

Ref	Company	Scope	Location
1	Stevens & Associates	Façade Stabilization Design	Brattleboro, VT 05302

MGM Springfield

Diversity Commitment Summary - Construction - WBE

As of: December 31, 2015

Ref	Company	Scope	Location
1	Berkshire Concrete Cutting	Saw Cutting	Torrington, CT 06790
2	CK Flooring Solutions, Inc.	Carpet Installer	Chicopee, MA 01020
3	Connecticut Drywall Finishing, Inc.	Drywall	West Springfield, MA 01089
4	EDM Construction Inc.	Rough Carpentry and Structural Steel Erection	Merrimac, MA 01860
5	El Waterman, Inc.	Pipe Supplier	Foxboro, MA 02035
6	Evermore Light & Power, Inc.	Electrical	Somerville, MA 02145
7	Granite City Electric Supply Company, Inc.	Electrical Supplier	Quincy, MA 02169
8	Kittredge Equipment Company, Inc.	Kitchen Equipment	Agawam, MA 01001
9	L.K. Sheet Metal, Inc.	Sheet Metal	East Hartford, CT 06108
10	Lindon Supply	Piping Materials	East Providence, RI 02914
11	New England Foundation Company	Helical Piles	Andover, MA 01810
12	Rebar & Mesh, Inc.	Concrete	Haverhill, MA 01835
13	Security Construction Services, Inc.	Fencing	Hudson, MA 01749
14	Steere Engineering, Inc.	Engineering Services	Warwick, RI 02886
15	Triton Leasing and Rental, Inc.	Demolition & Abatement	Feeding Hills, MA 01030
16	Ultimate Abatement Company, Inc.	Abatement	Plainfield, MA 01070
17	Willow Tree Outdoor, LLC	Landscape	Springfield MA 01105

MGM Springfield

Diversity Commitment Summary - Construction - MBE

As of: December 31, 2015

Ref	Company	Scope	Location
1	American Environmental, Inc.	Abatement & Demolition	Holyoke, MA 01040
2	Ayala Excavating and Trucking, LLC	Trucking	Springfield, MA 01107
3	C&C Contractors, LLC	Trucking Services	Springfield, MA 01104
4	CMJ, LLC	Property Management/Maintenance	Springfield, MA 01101
5	Erection & Welding	Steel Supplier	New Milford, CT 06776
6	Larry's Trucking	Trucking	Springfield, MA 01129
7	Medeiros Hydroseeding & Landscaping Construction, Inc.	Trucking and Soil Materials	Monson, MA 01057
8	Northeastern Steel Corp	Steel Distributor	Revere, MA 02151
9	Optimum Building & Inspection	Carpentry	Springfield, MA 01104
10	S&F Concrete, Inc.	Concrete	Hudson, MA 01749
11	Titan Roofing Company	Roofing	Springfield, MA 01104

MGM Springfield

Diversity Commitment Summary - Construction - VBE

As of: December 31, 2015

Ref	Company	Scope	Location
1	BECO Electrical Contractors, Inc.	Electrical	Monson, MA 01057
2	Connecticut Temperature Controls LLC	Controls	Newington, CT 06131
3	Frisoli Electric, Inc.	Electrical	Holbrook, MA 02343
4	JRL Construction, Inc.	General Contractor - Demolition	Springfield, MA 01103
5	Performance Testing & Balancing LLC	Testing & Balancing	South Hampton, MA 01073

APPENDIX D

CONSTRUCTION WORKFORCE STATISTICS

AS OF DECEMBER 28, 2015

Workforce Company Union Hours Diversity Report - Constructio

As of: December 28, 2015

Reference	Company	This Month's Workforce Diversity Statistics							Project To Date Workforce Diversity Statistics								
		Employee Count	This Month's Total Hours	Women		Minority		Veteran		Employee Count	Project To Date Total Hours	Women		Minority		Veteran	
				Hours	%	Hours	%	Hours	%			Hours	%	Hours	%	Hours	%
1	Allen & Major Associates, Inc.	0	0.00	0.00	0.00%	0.00	0.00%	0.00	0.00%	0	0.00	0.00	0.00%	0.00	0.00%	0.00	0.00%
2	Allied Fire Protection, Inc. - Sub to Harry Grodsky & Co., Inc.	0	0.00	0.00	0.00%	0.00	0.00%	0.00	0.00%	9	1,354.00	0.00	0.00%	256.00	18.91%	0.00	0.00%
3	American Environmental, Inc.	0	0.00	0.00	0.00%	0.00	0.00%	0.00	0.00%	116	16,818.75	1,285.00	7.64%	15,557.75	92.50%	195.50	1.16%
4	Ayotte & King For Tile, Inc. - Sub to Fontaine Bros, Inc.	0	0.00	0.00	0.00%	0.00	0.00%	0.00	0.00%	24	450.50	0.00	0.00%	4.00	0.89%	0.00	0.00%
5	Bay State Elevator Company	0	0.00	0.00	0.00%	0.00	0.00%	0.00	0.00%	8	315.00	0.00	0.00%	0.00	0.00%	0.00	0.00%
6	Champlain Masonry, Inc. - Sub to Fontaine Bros, Inc.	0	0.00	0.00	0.00%	0.00	0.00%	0.00	0.00%	36	5,090.75	100.00	1.96%	2,261.00	44.41%	0.00	0.00%
7	Chandler Architectural Products, Inc.	0	0.00	0.00	0.00%	0.00	0.00%	0.00	0.00%	13	455.50	0.00	0.00%	53.00	11.64%	64.00	14.05%
8	CK Flooring Solutions, Inc. - Sub to Fontaine Bros, Inc.	0	0.00	0.00	0.00%	0.00	0.00%	0.00	0.00%	6	231.00	0.00	0.00%	0.00	0.00%	0.00	0.00%
9	Collins Electric Co.	0	0.00	0.00	0.00%	0.00	0.00%	0.00	0.00%	14	1,551.00	423.50	27.30%	250.00	16.12%	486.00	31.33%
10	Commonwealth Guardrail - Sub to Willow Tree Outdoor	0	0.00	0.00	0.00%	0.00	0.00%	0.00	0.00%	17	690.00	4.00	0.58%	69.00	10.00%	0.00	0.00%
11	Connecticut Drywall Finishing - Professional Drywall - Sub to Fontaine Bros, Inc.	0	0.00	0.00	0.00%	0.00	0.00%	0.00	0.00%	20	1,335.50	0.00	0.00%	158.50	11.87%	0.00	0.00%
12	Evermore Light & Power, Inc. - Sub to Universal Electric Co.	0	0.00	0.00	0.00%	0.00	0.00%	0.00	0.00%	4	613.50	0.00	0.00%	0.00	0.00%	0.00	0.00%
13	Fontaine Bros, Inc.	0	0.00	0.00	0.00%	0.00	0.00%	0.00	0.00%	40	5,476.00	568.00	10.37%	2,016.00	36.82%	0.00	0.00%
14	Food Equipment Installation, Inc. - Sub to Kittredge Equipment Co., Inc.	0	0.00	0.00	0.00%	0.00	0.00%	0.00	0.00%	4	116.00	0.00	0.00%	0.00	0.00%	0.00	0.00%
15	Form + Place Inc.	0	0.00	0.00	0.00%	0.00	0.00%	0.00	0.00%	0	0.00	0.00	0.00%	0.00	0.00%	0.00	0.00%
16	Frisoli Electric Inc. - Sub to Universal Electric Co.	0	0.00	0.00	0.00%	0.00	0.00%	0.00	0.00%	1	299.00	0.00	0.00%	0.00	0.00%	0.00	0.00%
17	Gagliarducci Construction, Inc.	7	59.00	0.00	0.00%	8.00	13.56%	0.00	0.00%	32	3,436.00	635.00	18.48%	483.50	14.07%	796.50	23.18%
18	Harry Grodsky & Co., Inc.	0	0.00	0.00	0.00%	0.00	0.00%	0.00	0.00%	29	5,446.00	322.50	5.92%	26.00	0.48%	0.00	0.00%
19	Howard Stein Hudson	0	0.00	0.00	0.00%	0.00	0.00%	0.00	0.00%	0	0.00	0.00	0.00%	0.00	0.00%	0.00	0.00%
20	JDC Demolition	0	0.00	0.00	0.00%	0.00	0.00%	0.00	0.00%	7	1,102.00	0.00	0.00%	0.00	0.00%	0.00	0.00%
21	JDC-Cyn Environmental Services	0	0.00	0.00	0.00%	0.00	0.00%	0.00	0.00%	0	24.00	0.00	0.00%	24.00	100.00%	0.00	0.00%
22	Kittredge Equipment Co., Inc.	0	0.00	0.00	0.00%	0.00	0.00%	0.00	0.00%	0	0.00	0.00	0.00%	0.00	0.00%	0.00	0.00%
23	L.K. Sheet Metal - Sub to Harry Grodsky & Co., Inc.	0	0.00	0.00	0.00%	0.00	0.00%	0.00	0.00%	9	2,925.50	294.00	10.05%	0.00	0.00%	0.00	0.00%
24	Langan Insulation, LLC - Sub to Harry Grodsky & Co., Inc.	0	0.00	0.00	0.00%	0.00	0.00%	0.00	0.00%	2	568.00	0.00	0.00%	0.00	0.00%	0.00	0.00%
25	Marr Scaffolding, Inc.	0	0.00	0.00	0.00%	0.00	0.00%	0.00	0.00%	4	56.00	0.00	0.00%	0.00	0.00%	0.00	0.00%
26	Northeast Steel Erectors, Inc.	0	0.00	0.00	0.00%	0.00	0.00%	0.00	0.00%	7	1,335.00	34.00	2.55%	183.00	13.71%	393.00	29.44%
27	Northeastern Steel Corp - Sub to Fontaine Bros, Inc.	0	0.00	0.00	0.00%	0.00	0.00%	0.00	0.00%	6	64.00	9.00	14.06%	50.00	78.13%	0.00	0.00%
28	Northern Construction Service, LLC	9	424.00	43.00	10.14%	43.00	10.14%	0.00	0.00%	13	1,622.50	106.00	6.53%	106.00	6.53%	0.00	0.00%
29	P. Gioioso and Sons, Inc.	0	0.00	0.00	0.00%	0.00	0.00%	0.00	0.00%	9	834.50	114.50	13.72%	0.00	0.00%	0.00	0.00%
30	Performance Testing & Balancing, LLC - Sub to Harry Grodsky Co.	0	0.00	0.00	0.00%	0.00	0.00%	0.00	0.00%	3	64.00	0.00	0.00%	0.00	0.00%	38.00	59.38%
31	Professional Drywall Construction Inc. - Sub to Fontaine Bros, Inc.	0	0.00	0.00	0.00%	0.00	0.00%	0.00	0.00%	65	3,793.50	196.50	5.18%	776.50	20.47%	347.00	9.15%
32	RoadSafe Traffic Systems, Inc.	0	0.00	0.00	0.00%	0.00	0.00%	0.00	0.00%	3	25.00	0.00	0.00%	0.00	0.00%	0.00	0.00%
33	Security Construction Services, Inc.	0	0.00	0.00	0.00%	0.00	0.00%	0.00	0.00%	12	3,122.00	300.00	9.61%	973.25	31.17%	0.00	0.00%
34	Soep Painting Corp - Sub to Fontaine Bros, Inc.	0	0.00	0.00	0.00%	0.00	0.00%	0.00	0.00%	9	1,475.50	0.00	0.00%	6.00	0.41%	0.00	0.00%
35	Superior Caulking & Waterproofing Co., Inc. - Sub to Fontaine Bros, Inc.	0	0.00	0.00	0.00%	0.00	0.00%	0.00	0.00%	7	193.00	0.00	0.00%	155.50	80.57%	0.00	0.00%
36	T & M Equipment Corporation - Sub to Fontaine Bros, Inc.	0	0.00	0.00	0.00%	0.00	0.00%	0.00	0.00%	30	2,954.00	79.50	2.69%	600.00	20.31%	0.00	0.00%
37	Tech Valley Contracting, LLC - Sub to Fontaine Bros, Inc.	0	0.00	0.00	0.00%	0.00	0.00%	0.00	0.00%	8	2,018.00	206.00	10.21%	0.00	0.00%	0.00	0.00%
38	Tishman Construction	4	120.00	40.00	33.33%	0.00	0.00%	40.00	33.33%	4	4,152.00	1,000.00	24.08%	0.00	0.00%	1,592.00	38.34%
39	Titan Roofing, Inc.	0	0.00	0.00	0.00%	0.00	0.00%	0.00	0.00%	38	1,720.50	0.00	0.00%	201.00	11.68%	138.00	8.02%
40	TJ Conway Company	0	0.00	0.00	0.00%	0.00	0.00%	0.00	0.00%	7	226.00	0.00	0.00%	17.00	7.52%	0.00	0.00%
41	Triton Leasing & Rental, Inc.	0	0.00	0.00	0.00%	0.00	0.00%	0.00	0.00%	35	3,187.50	0.00	0.00%	1,547.50	48.55%	0.00	0.00%
42	Ultimate Abatement Co, Inc.	0	0.00	0.00	0.00%	0.00	0.00%	0.00	0.00%	36	7,438.00	1,206.00	16.21%	7,438.00	100.00%	0.00	0.00%
43	Universal Electric Co., Inc.	0	0.00	0.00	0.00%	0.00	0.00%	0.00	0.00%	18	5,635.00	556.50	9.88%	1,284.50	22.80%	394.00	6.99%
44	Unwin Overhead Doors - Sub to Fontaine Bros, Inc.	0	0.00	0.00	0.00%	0.00	0.00%	0.00	0.00%	0	0.00	0.00	0.00%	0.00	0.00%	0.00	0.00%
45	Valet Park of America	0	0.00	0.00	0.00%	0.00	0.00%	0.00	0.00%	0	0.00	0.00	0.00%	0.00	0.00%	0.00	0.00%
46	William Roberts Electric Co., Inc. - Sub to Harry Grodsky & Co., Inc.	0	0.00	0.00	0.00%	0.00	0.00%	0.00	0.00%	3	292.50	0.00	0.00%	93.00	31.79%	0.00	0.00%
47	Willow Tree Outdoor	0	0.00	0.00	0.00%	0.00	0.00%	0.00	0.00%	5	261.50	0.00	0.00%	105.50	40.34%	0.00	0.00%
Total - Unions		20	603.00	83.00	13.76%	51.00	8.46%	40.00	6.63%	713	88,768.00	7,440.00	8.38%	34,695.50	39.09%	4,444.00	5.01%
48	On-Site Design / Management	27	991.00	120.00	12.11%	40.00	4.04%	162.00	16.35%	64	33,631.50	4,774.00	14.20%	1,076.50	3.20%	4,308.00	12.81%
Total		47	1,594.00	203.00	12.74%	91.00	5.71%	202.00	12.67%	777	122,399.50	12,214.00	9.98%	35,772.00	29.23%	8,752.00	7.15%

Totals - Overall			
Group	Project Goals	Project To Date	Delta
Women	6.90%	9.98%	3.08%
Minority	15.30%	29.23%	13.93%
Veteran	8.00%	7.15%	(0.85%)

Notes:

(1) Statistics Include all workforce reports that were received by MGM as of December 28, 2015.

MGM Springfield
 Workforce Union Diversity Report - Construction
 As of: December 28, 2015

Reference	Union	This Month's Workforce Diversity Statistics						Project To Date Workforce Diversity Statistics									
		Employee Count	This Month's Total Hours	Women		Minority		Veteran		Employee Count	Project To Date Total Hours	Women		Minority		Veteran	
				Hours	%	Hours	%	Hours	%			Hours	%	Hours	%	Hours	%
1	Asbestos Workers #6	0	0.00	0.00	0.00%	0.00	0.00%	0.00	0.00%	26	2,864.50	0.00	0.00%	1483.50	51.79%	0.00	0.00%
2	Bricklayers Local #3	0	0.00	0.00	0.00%	0.00	0.00%	0.00	0.00%	56	5,661.50	206.00	3.64%	1334.00	23.56%	0.00	0.00%
3	Carpenters - Local #108	2	40.00	0.00	0.00%	0.00	0.00%	40.00	100.00%	85	8,232.00	352.00	4.28%	1491.00	18.11%	1,923.00	23.36%
4	CT Bricklayers #1	0	0.00	0.00	0.00%	0.00	0.00%	0.00	0.00%	1	24.00	0.00	0.00%	24.00	100.00%	0.00	0.00%
5	Floorcoverers Local #2168	0	0.00	0.00	0.00%	0.00	0.00%	0.00	0.00%	14	304.50	0.00	0.00%	4.00	1.31%	0.00	0.00%
6	International Brotherhood of Electrical Workers - IBEW Local #7	0	0.00	0.00	0.00%	0.00	0.00%	0.00	0.00%	42	8,455.00	980.00	11.59%	1659.50	19.63%	880.00	10.41%
7	International Brotherhood of Electrical Workers - IBEW Local #455	0	0.00	0.00	0.00%	0.00	0.00%	0.00	0.00%	3	112.25	50.75	45.21%	112.25	100.00%	0.00	0.00%
8	International Association of Iron Workers Local #7	0	0.00	0.00	0.00%	0.00	0.00%	0.00	0.00%	14	1,431.00	43.00	3.00%	233.00	16.28%	393.00	27.46%
9	International Union of Elevator Constructors Local #41	0	0.00	0.00	0.00%	0.00	0.00%	0.00	0.00%	8	315.00	0.00	0.00%	0.00	0.00%	0.00	0.00%
10	International Union of Operating Engineers - IUOE Local #4	2	92.50	0.00	0.00%	0.00	0.00%	0.00	0.00%	8	752.50	0.00	0.00%	0.00	0.00%	0.00	0.00%
11	International Union of Operating Engineers - IUOE Local #98	5	43.00	0.00	0.00%	0.00	0.00%	0.00	0.00%	37	3,485.00	0.00	0.00%	0.00	0.00%	908.50	26.07%
12	International Union of Painters and Allied Trades - IUPAT District #11	0	0.00	0.00	0.00%	0.00	0.00%	0.00	0.00%	6	125.50	0.00	0.00%	0.00	0.00%	0.00	0.00%
13	International Union of Painters and Allied Trades - IUPAT Local #1333	0	0.00	0.00	0.00%	0.00	0.00%	0.00	0.00%	9	306.50	0.00	0.00%	29.00	9.46%	64.00	20.88%
14	Laborer's International Union of North America - LIUNA Building Wreckers Local #1421	0	0.00	0.00	0.00%	0.00	0.00%	0.00	0.00%	124	20,435.25	1,450.75	7.10%	19216.75	94.04%	0.00	0.00%
15	Laborers Local #230	0	0.00	0.00	0.00%	0.00	0.00%	0.00	0.00%	1	58.75	0.00	0.00%	58.75	100.00%	0.00	0.00%
16	Laborers Local #243	1	64.00	0.00	0.00%	0.00	0.00%	0.00	0.00%	2	383.00	0.00	0.00%	0.00	0.00%	0.00	0.00%
134	Laborers Local #381	0	0.00	0.00	0.00%	0.00	0.00%	0.00	0.00%	0	0.00	0.00	0.00%	0.00	0.00%	0.00	0.00%
135	Laborers Local #385	0	0.00	0.00	0.00%	0.00	0.00%	0.00	0.00%	0	0.00	0.00	0.00%	0.00	0.00%	0.00	0.00%
17	Laborers Local #39	0	0.00	0.00	0.00%	0.00	0.00%	0.00	0.00%	1	124.00	0.00	0.00%	0.00	0.00%	0.00	0.00%
18	Laborers Local #455	0	0.00	0.00	0.00%	0.00	0.00%	0.00	0.00%	1	309.50	0.00	0.00%	309.50	100.00%	0.00	0.00%
19	Laborers Local #473	1	39.50	0.00	0.00%	0.00	0.00%	0.00	0.00%	5	542.50	0.00	0.00%	0.00	0.00%	0.00	0.00%
20	Laborers Local #596	4	140.50	0.00	0.00%	8.00	5.69%	8.00	0.00%	56	6,515.75	1,128.50	17.32%	1890.00	29.01%	16.00	0.25%
21	Laborers Local #611	0	0.00	0.00	0.00%	0.00	0.00%	0.00	0.00%	1	270.50	0.00	0.00%	270.50	100.00%	0.00	0.00%
22	Laborers Local #665	0	0.00	0.00	0.00%	0.00	0.00%	0.00	0.00%	1	348.50	0.00	0.00%	348.50	100.00%	0.00	0.00%
23	Laborers Local #675	0	0.00	0.00	0.00%	0.00	0.00%	0.00	0.00%	1	133.50	0.00	0.00%	133.50	100.00%	0.00	0.00%
24	Laborers Local #999	5	183.50	83.00	45.23%	43.00	23.43%	0.00	0.00%	84	12,817.50	2,498.00	19.49%	5428.25	42.35%	195.50	1.53%
25	NY Bricklayers #2	0	0.00	0.00	0.00%	0.00	0.00%	0.00	0.00%	1	4.00	0.00	0.00%	0.00	0.00%	0.00	0.00%
26	Painters and Allied Trades District Council #35	0	0.00	0.00	0.00%	0.00	0.00%	0.00	0.00%	24	2,717.50	0.00	0.00%	164.50	6.05%	0.00	0.00%
27	Plumbers & Pipefitters #104	0	0.00	0.00	0.00%	0.00	0.00%	0.00	0.00%	36	5,672.00	322.50	5.69%	43.00	0.76%	0.00	0.00%
28	Roofers #248	0	0.00	0.00	0.00%	0.00	0.00%	0.00	0.00%	30	1,516.00	0.00	0.00%	206.00	13.59%	26.00	1.72%
29	Sheet Metal Workers #17	0	0.00	0.00	0.00%	0.00	0.00%	0.00	0.00%	4	116.00	0.00	0.00%	0.00	0.00%	0.00	0.00%
30	Sheet Metal Workers #40	0	0.00	0.00	0.00%	0.00	0.00%	0.00	0.00%	2	436.00	0.00	0.00%	0.00	0.00%	0.00	0.00%
31	Sheet Metal Workers #63	0	0.00	0.00	0.00%	0.00	0.00%	0.00	0.00%	18	2,651.00	294.00	11.09%	0.00	0.00%	38.00	1.43%
32	Sprinkler Fitters #669	0	0.00	0.00	0.00%	0.00	0.00%	0.00	0.00%	9	1,354.00	0.00	0.00%	256.00	18.91%	0.00	0.00%
33	Teamsters' #404	0	0.00	0.00	0.00%	0.00	0.00%	0.00	0.00%	3	293.50	114.50	39.01%	0.00	0.00%	0.00	0.00%
Total - Unions		20	603.00	83.00	13.76%	51.00	8.46%	40.00	6.63%	713	88,768.00	7,440.00	8.38%	34,695.50	39.09%	4,444.00	5.01%
34	On-Site Design / Management	27	991.00	120.00	12.11%	40.00	4.04%	162.00	16.35%	64	33,631.50	4,774.00	14.20%	1076.50	3.20%	4,308.00	12.81%
Total		47	1,594.00	203.00	12.74%	91.00	5.71%	202.00	12.67%	777	122,399.50	12,214.00	9.98%	35,772.00	29.23%	8,752.00	7.15%

Totals - Overall			
Group	Project Goals	Project To Date	Delta
Women	6.90%	9.98%	3.08%
Minority	15.30%	29.23%	13.93%
Veteran	8.00%	7.15%	(0.85%)

Notes:
 (1) Statistics include all workforce reports that were received by MGM as of December 28, 2015.

APPENDIX E

LETTER REGARDING COST OF CONSTRUCTION AND CAPITALIZATION OF GAMING LICENSE



January 18, 2016

Massachusetts Gaming Commission
101 Federal Street, 12th Floor
Boston, MA 02110

Re: Quarterly Report – Fourth Quarter 2015

Dear Commissioners:

In accordance with 205 CMR 135.02(5)(a) of the Massachusetts Gaming Commission Monitoring of Project Construction and Licensee Requirements (the “Monitoring Regulations”), please see on the attached Exhibit A the costs of construction, infrastructure improvements and related costs incurred by Blue Tarp reDevelopment, LLC (“MGM”) through December 31, 2015 in connection with the development of MGM Springfield project in Springfield, Massachusetts (the “Project”) compared to MGM’s cost estimates as of that date, which costs have been calculated in accordance with 205 CMR 122.03: Costs Included in the Calculation of Capital Investment.

In addition, in accordance with 205 CMR 135.02(b) of the Monitoring Regulations, I direct you to the publicly-filed financial statements of MGM Resorts International, the parent company of Blue Tarp reDevelopment, LLC (the “Licensee”), including MGM’s Annual Report on Form 10-K for the year ended December 31, 2014, filed with Securities and Exchange Commission (the “SEC”) on March 2, 2015, and MGM’s Quarterly Report Form 10-Q for the quarter ended September 30, 2015, filed with the SEC on November 6, 2015, each of which are available at www.sec.gov. As reflected in these financial statements, the Licensee has sufficient resources in order to meet all expected financial obligations relating to the completion of the gaming establishment and related infrastructure improvements associated with the Project.

I hereby certify that the foregoing and attached information is truthful and accurate to the best of my knowledge and belief.

Sincerely,

Seth N. Stratton
Vice President & General Counsel

cc: Michael Mathis, President & COO
Edward Pikula, Esq., Springfield City Solicitor

EXHIBIT A

Q4 2015 COST ESTIMATE (\$mm)

Ref	Description	Incurred To Date	Remaining	Total Estimate
1	Construction / Design	\$18.2	\$477.3	\$495.5
2	FF&E	\$0	\$74.9	\$74.9
3	OSE	\$0	\$43.7	\$43.7
	Subtotal of Eligible Cap. Costs	\$18.2	\$595.9	\$614.1
4	Land	\$49.5	\$1.8	\$51.3
5	Off-site Parcel Improvements	\$11.2	\$0.2	\$11.4
6	License/ Application Fees	\$85.0	\$0	\$85.0
7	Pre-opening Exp. / Host Comm. Costs	\$24.8	\$85.3	\$110.1
8	Fin. Costs / Capitalized Int.	\$0.9	\$44.1	\$45.0
9	Project Contingency	\$0	\$35.0 - \$55.1	\$35.0 - \$55.1
	Subtotal of Ineligible Costs	\$171.4	\$166.4 - \$186.5	\$337.8 - \$357.9
	Total	\$189.6	\$762.3 - \$782.4	\$951.9 - \$972.0

Notes:

(1) Contingency, subtotal of Ineligible Costs and total high ranges will change. Majority of Contingency will be spent on Eligible Capital Costs.